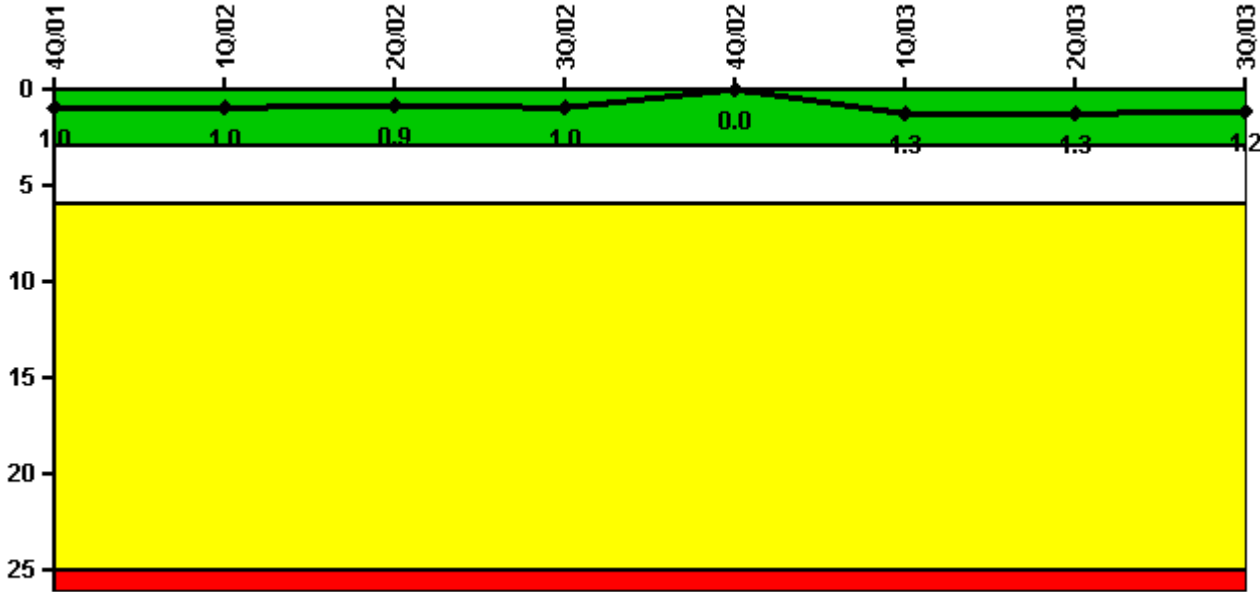


North Anna 2

3Q/2003 Performance Indicators

Licensee's General Comments: none

Unplanned Scrams per 7000 Critical Hrs



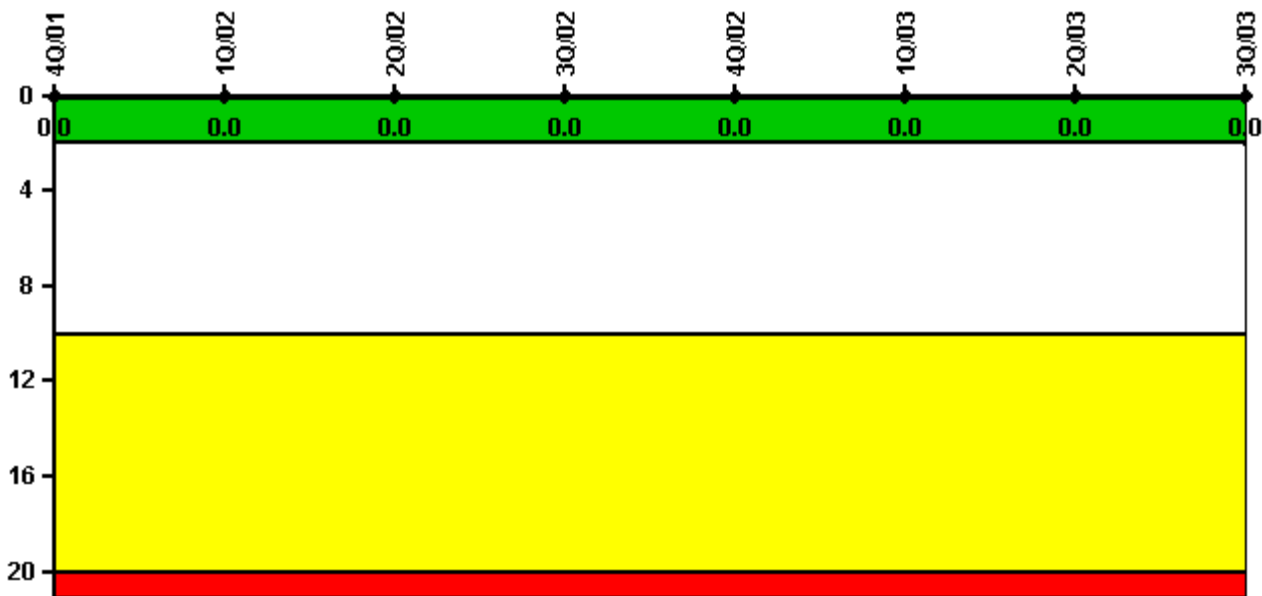
Thresholds: White > 3.0 Yellow > 6.0 Red > 25.0

Notes

Unplanned Scrams per 7000 Critical Hrs	4Q/01	1Q/02	2Q/02	3Q/02	4Q/02	1Q/03	2Q/03	3Q/03
Unplanned scrams	1.0	0	0	0	0	1.0	0	0
Critical hours	1017.0	2160.0	2183.0	1657.7	0	1434.3	2180.8	2208.0
Indicator value	1.0	1.0	0.9	1.0	0	1.3	1.3	1.2

Licensee Comments: none

Scrams with Loss of Normal Heat Removal



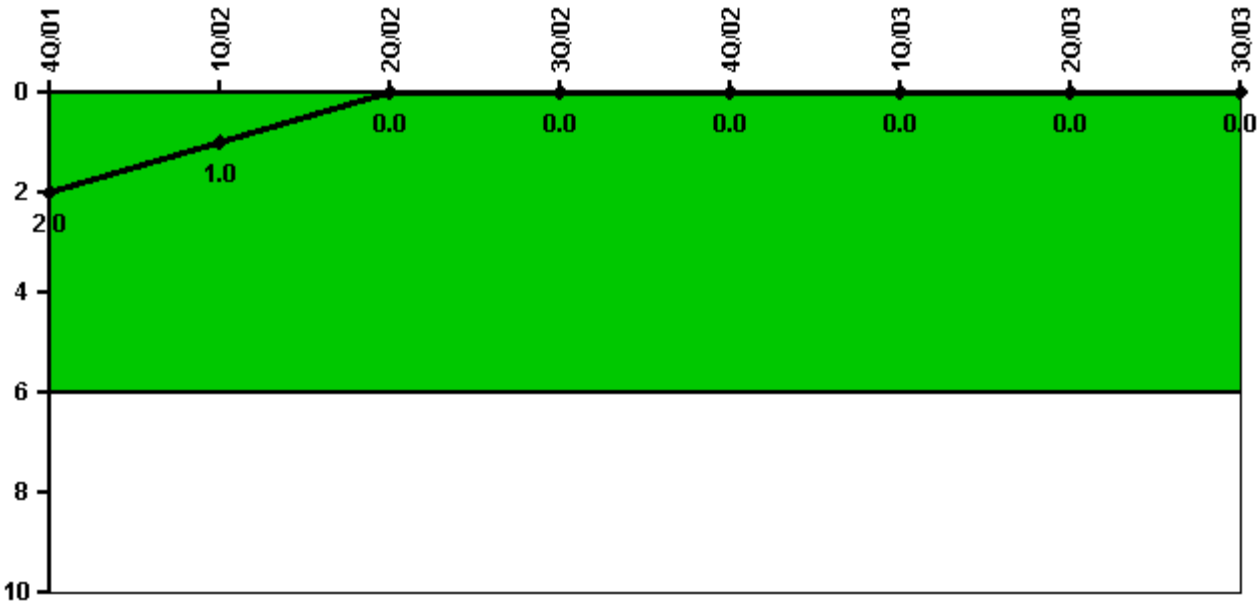
Thresholds: White > 2.0 Yellow > 10.0 Red > 20.0

Notes

Scrams with Loss of Normal Heat Removal	4Q/01	1Q/02	2Q/02	3Q/02	4Q/02	1Q/03	2Q/03	3Q/03
Scrams	0	0	0	0	0	0	0	0
Indicator value	0	0	0	0	0	0	0	0

Licensee Comments: none

Unplanned Power Changes per 7000 Critical Hrs



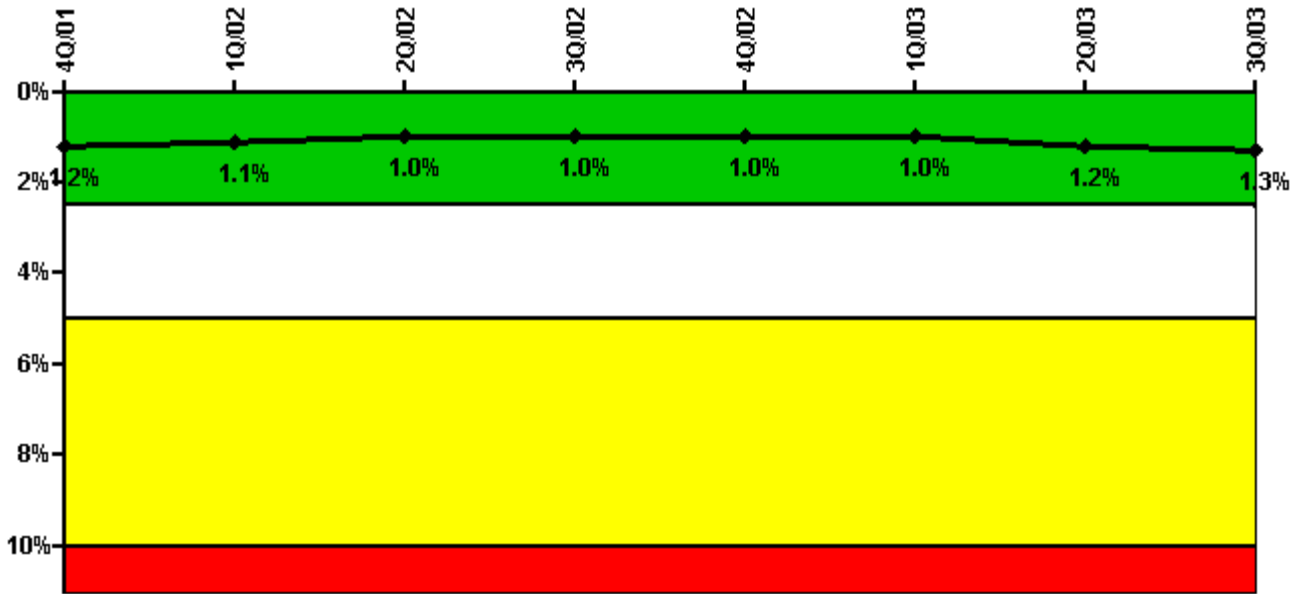
Thresholds: White > 6.0

Notes

Unplanned Power Changes per 7000 Critical Hrs	4Q/01	1Q/02	2Q/02	3Q/02	4Q/02	1Q/03	2Q/03	3Q/03
Unplanned power changes	0	0	0	0	0	0	0	0
Critical hours	1017.0	2160.0	2183.0	1657.7	0	1434.3	2180.8	2208.0
Indicator value	2.0	1.0	0	0	0	0	0	0

Licensee Comments: none

Safety System Unavailability, Emergency AC Power



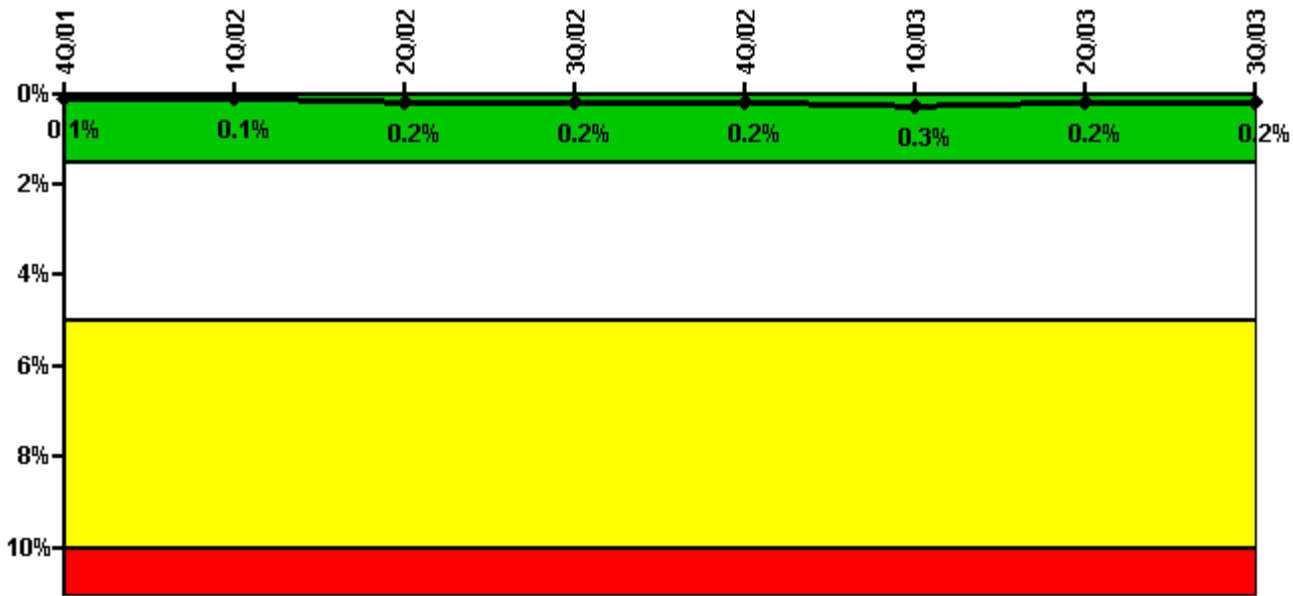
Thresholds: White > 2.5% Yellow > 5.0% Red > 10.0%

Notes

Safety System Unavailability, Emergency AC Power	4Q/01	1Q/02	2Q/02	3Q/02	4Q/02	1Q/03	2Q/03	3Q/03
Train 1								
Planned unavailable hours	33.28	13.03	5.75	9.14	0	9.13	36.01	30.54
Unplanned unavailable hours	0	0.17	0	0	0	0	0	14.10
Fault exposure hours	0	0	0	0	0	0	0	0
Effective Reset hours	0	0	0	0	0	0	0	0
Required hours	1654.37	2160.00	2183.00	1939.19	861.00	1819.64	2183.00	2208.00
Train 2								
Planned unavailable hours	20.13	9.28	5.72	12.30	0	5.74	60.32	34.65
Unplanned unavailable hours	0	0	0	15.35	0	0	0	10.73
Fault exposure hours	0	0	0	0	0	0	0	0
Effective Reset hours	0	0	0	0	0	0	0	0
Required hours	1654.37	2160.00	2183.00	1939.19	1348.00	1819.64	2183.00	2208.00
Indicator value	1.2%	1.1%	1.0%	1.0%	1.0%	1.0%	1.2%	1.3%

Licensee Comments: none

Safety System Unavailability, High Pressure Injection System (HPSI)



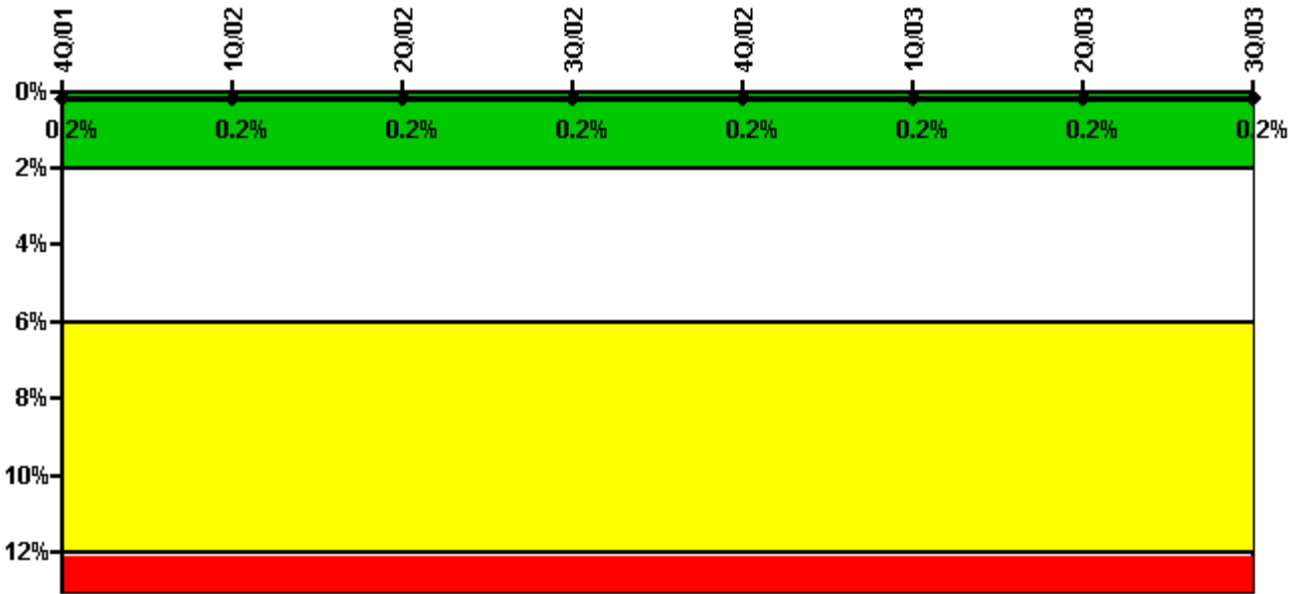
Thresholds: White > 1.5% Yellow > 5.0% Red > 10.0%

Notes

Safety System Unavailability, High Pressure Injection System (HPSI)	4Q/01	1Q/02	2Q/02	3Q/02	4Q/02	1Q/03	2Q/03	3Q/03
Train 1								
Planned unavailable hours	1.95	1.38	0.27	12.08	0	1.77	1.35	2.57
Unplanned unavailable hours	0	0	1.38	0	0	8.92	0	0.55
Fault exposure hours	0	0	0	0	0	0	0	0
Effective Reset hours	0	0	0	0	0	0	0	0
Required hours	1095.73	2160.00	2183.00	1668.50	0	1474.13	2183.00	2208.00
Train 2								
Planned unavailable hours	1.50	1.65	0	0.99	0	1.48	0.97	0.72
Unplanned unavailable hours	0	0.42	7.05	10.90	0	8.92	0	0
Fault exposure hours	0	0	0	0	0	0	0	0
Effective Reset hours	0	0	0	0	0	0	0	0
Required hours	1095.73	2160.00	2183.00	1668.50	0	1474.13	2183.00	2208.00
Indicator value	0.1%	0.1%	0.2%	0.2%	0.2%	0.3%	0.2%	0.2%

Licensee Comments: none

Safety System Unavailability, Heat Removal System (AFW)



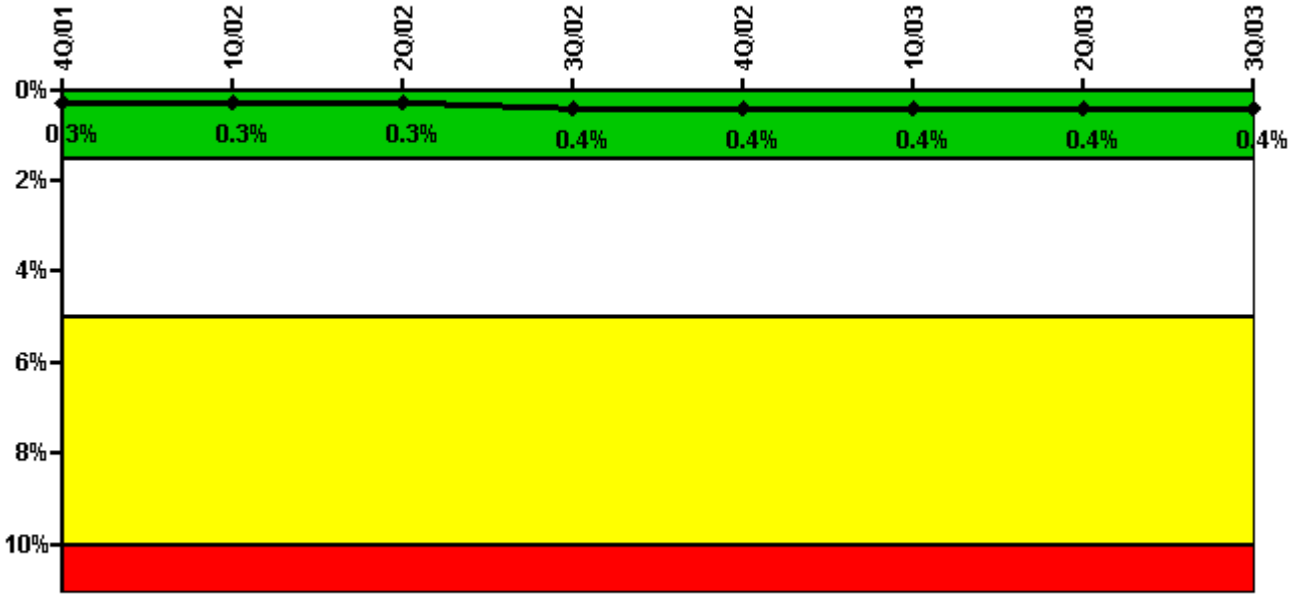
Thresholds: White > 2.0% Yellow > 6.0% Red > 12.0%

Notes

Safety System Unavailability, Heat Removal System (AFW)	4Q/01	1Q/02	2Q/02	3Q/02	4Q/02	1Q/03	2Q/03	3Q/03
Train 1								
Planned unavailable hours	1.23	14.08	1.47	0	0	2.05	1.73	2.40
Unplanned unavailable hours	0	0	0	0	0	0	0	0
Fault exposure hours	0	0	0	0	0	0	0	0
Effective Reset hours	0	0	0	0	0	0	0	0
Required hours	1085.55	2160.00	2183.00	1670.37	0	1468.98	2183.00	2208.00
Train 2								
Planned unavailable hours	0	1.22	6.68	1.53	0	0	4.68	2.08
Unplanned unavailable hours	0	0	0	0	0	0.25	0	0
Fault exposure hours	0	0	0	0	0	0	0	0
Effective Reset hours	0	0	0	0	0	0	0	0
Required hours	1085.55	2160.00	2183.00	1670.37	0	1468.98	2183.00	2208.00
Train 3								
Planned unavailable hours	5.05	5.22	3.90	12.12	0	7.61	1.43	5.12
Unplanned unavailable hours	0	0	0	0	0	0	0	0
Fault exposure hours	0	0	0	0	0	0	0	0
Effective Reset hours	0	0	0	0	0	0	0	0
Required hours	1085.55	2160.00	2183.00	1666.63	0	1468.98	2183.00	2208.00
Indicator value	0.2%	0.2%	0.2%	0.2%	0.2%	0.2%	0.2%	0.2%

Licensee Comments: none

Safety System Unavailability, Residual Heat Removal System



Thresholds: White > 1.5% Yellow > 5.0% Red > 10.0%

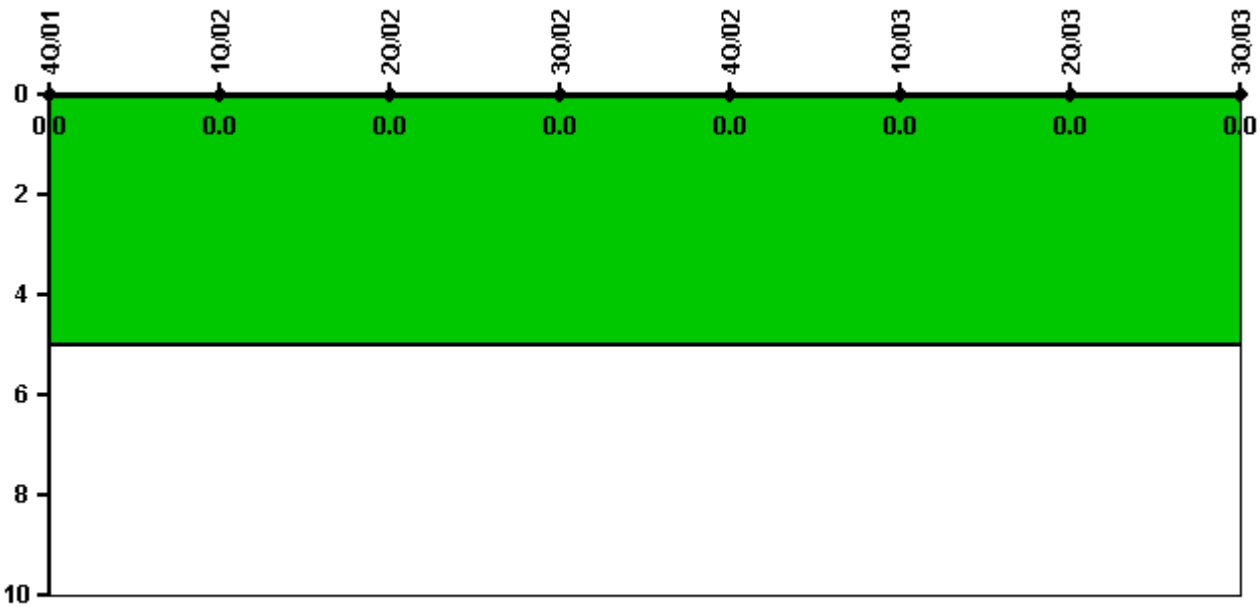
Notes

Safety System Unavailability, Residual Heat Removal System	4Q/01	1Q/02	2Q/02	3Q/02	4Q/02	1Q/03	2Q/03	3Q/03
Train 1								
Planned unavailable hours	1.85	4.16	19.60	31.84	0	1.91	3.97	39.06
Unplanned unavailable hours	0	0	0	0	0	0	28.90	0
Fault exposure hours	0	0	0	0	0	0	0	0
Effective Reset hours	0	0	0	0	0	0	0	0
Required hours	1095.73	2160.00	2183.00	1670.37	0	1479.28	2183.00	2208.00
Train 2								
Planned unavailable hours	0	3.18	10.60	33.44	0	2.70	1.72	5.36
Unplanned unavailable hours	0	0	0	1.98	0	0	0	0
Fault exposure hours	0	0	0	0	0	0	0	0
Effective Reset hours	0	0	0	0	0	0	0	0
Required hours	1095.73	2160.00	2183.00	1670.37	0	1479.28	2183.00	2208.00
Train 3								
Planned unavailable hours	5.36	0	3.17	2.32	0	0	0	6.52
Unplanned unavailable hours	0	0	0	0	0	0	0	0
Fault exposure hours	0	0	0	0	0	0	0	0
Effective Reset hours	0	0	0	0	0	0	0	0
Required hours	1736.49	2160.00	2183.00	1816.60	0	1798.81	2183.00	2208.00
Train 4								
Planned unavailable hours	3.15	0	5.93	1.08	0	0	0	11.33

Unplanned unavailable hours	0	0	0	0	0	0	0	0
Fault exposure hours	0	0	0	0	0	0	0	0
Effective Reset hours	0	0	0	0	0	0	0	0
Required hours	1736.49	2160.00	2183.00	1816.60	0	1798.81	2183.00	2208.00
Indicator value	0.3%	0.3%	0.3%	0.4%	0.4%	0.4%	0.4%	0.4%

Licensee Comments: none

Safety System Functional Failures (PWR)



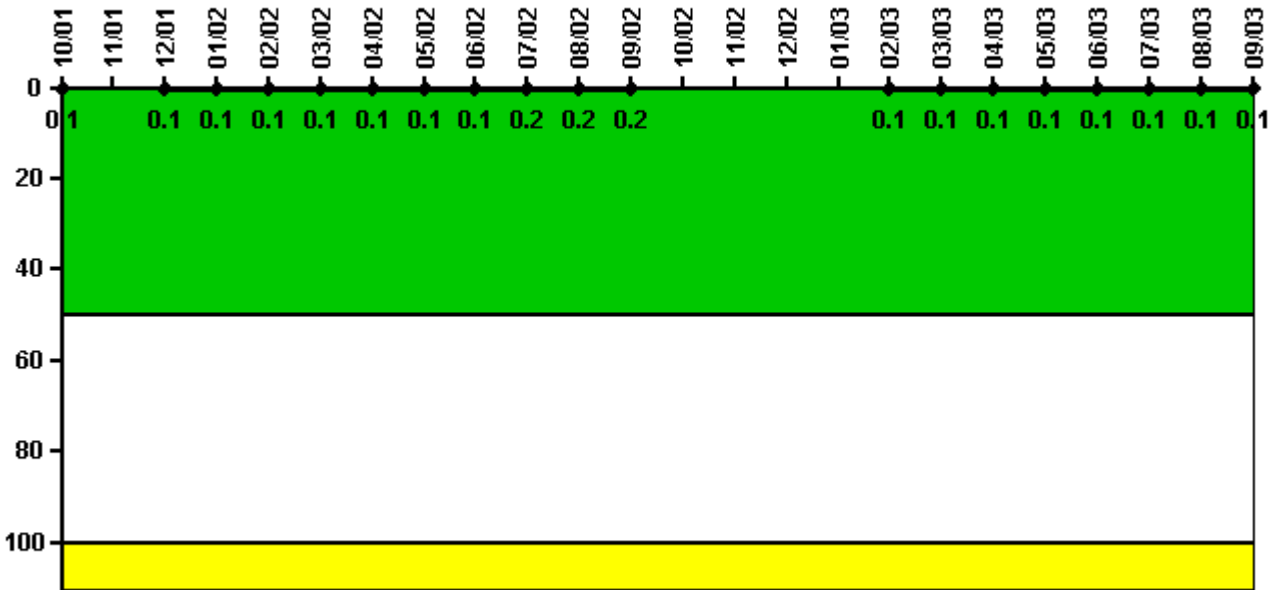
Thresholds: White > 5.0

Notes

Safety System Functional Failures (PWR)	4Q/01	1Q/02	2Q/02	3Q/02	4Q/02	1Q/03	2Q/03	3Q/03
Safety System Functional Failures	0	0	0	0	0	0	0	0
Indicator value	0	0	0	0	0	0	0	0

Licensee Comments: none

Reactor Coolant System Activity



Thresholds: White > 50.0 Yellow > 100.0

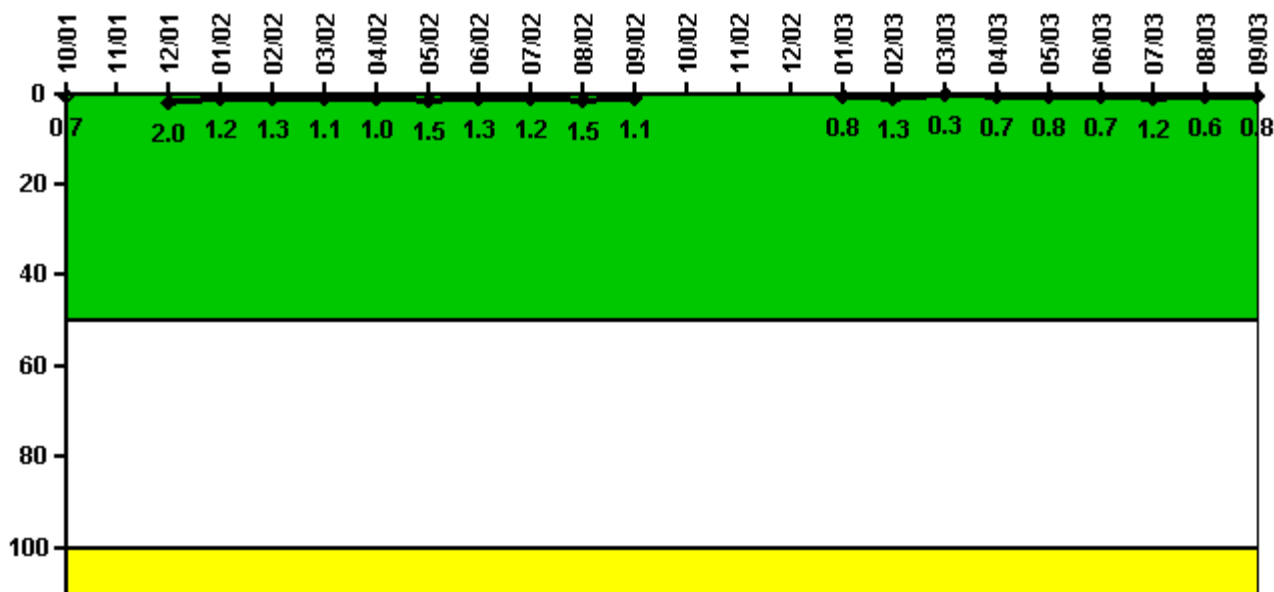
Notes

Reactor Coolant System Activity	10/01	11/01	12/01	1/02	2/02	3/02	4/02	5/02	6/02	7/02	8/02	9/02
Maximum activity	0.001190	N/A	0.001120	0.001140	0.001280	0.001270	0.001470	0.001470	0.001440	0.001510	0.001640	0.001540
Technical specification limit	1.0	1.0	1.0	1.0	1.0	1.0	1.0	1.0	1.0	1.0	1.0	1.0
Indicator value	0.1	N/A	0.1	0.1	0.1	0.1	0.1	0.1	0.1	0.2	0.2	0.2

Reactor Coolant System Activity	10/02	11/02	12/02	1/03	2/03	3/03	4/03	5/03	6/03	7/03	8/03	9/03
Maximum activity	N/A	N/A	N/A	N/A	0.000753	0.000682	0.000765	0.000792	0.000803	0.000868	0.000851	0.000887
Technical specification limit	1.0	1.0	1.0	1.0	1.0	1.0	1.0	1.0	1.0	1.0	1.0	1.0
Indicator value	N/A	N/A	N/A	N/A	0.1	0.1	0.1	0.1	0.1	0.1	0.1	0.1

Licensee Comments: none

Reactor Coolant System Leakage



Thresholds: White > 50.0 Yellow > 100.0

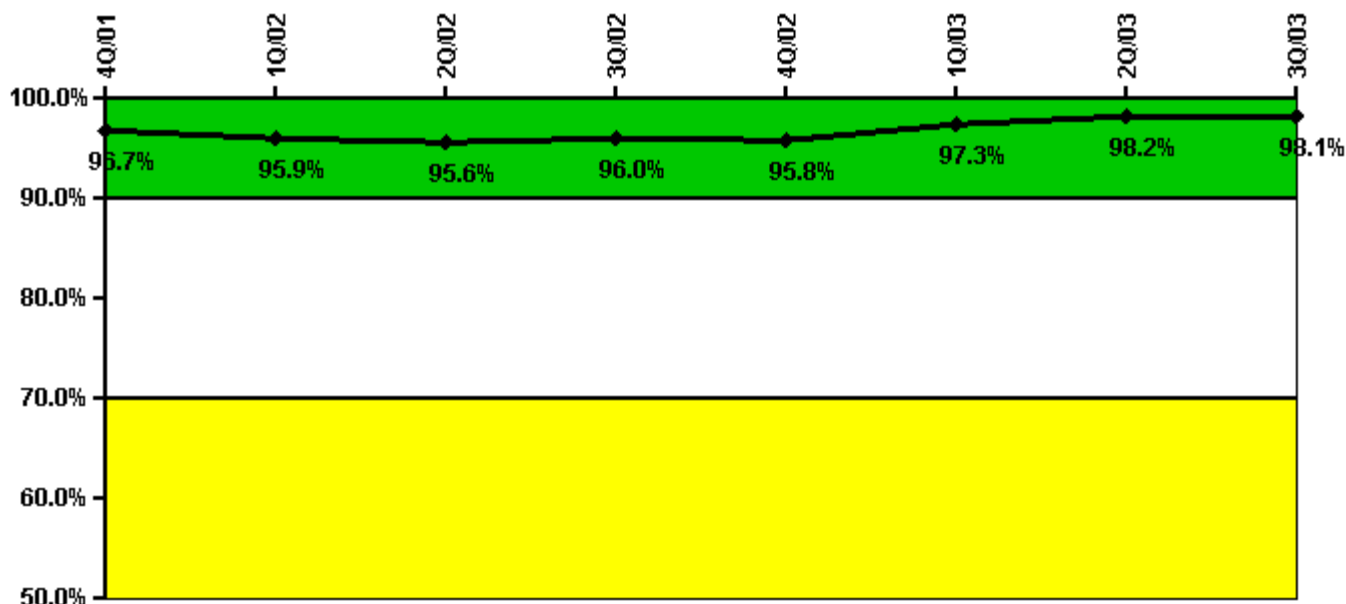
Notes

Reactor Coolant System Leakage	10/01	11/01	12/01	1/02	2/02	3/02	4/02	5/02	6/02	7/02	8/02	9/02
Maximum leakage	0.072	N/A	0.198	0.122	0.128	0.105	0.104	0.153	0.126	0.122	0.146	0.110
Technical specification limit	10.0	10.0	10.0	10.0	10.0	10.0	10.0	10.0	10.0	10.0	10.0	10.0
Indicator value	0.7	N/A	2.0	1.2	1.3	1.1	1.0	1.5	1.3	1.2	1.5	1.1

Reactor Coolant System Leakage	10/02	11/02	12/02	1/03	2/03	3/03	4/03	5/03	6/03	7/03	8/03	9/03
Maximum leakage	N/A	N/A	N/A	0.080	0.134	0.031	0.068	0.079	0.072	0.115	0.064	0.078
Technical specification limit	10.0	10.0	10.0	10.0	10.0	10.0	10.0	10.0	10.0	10.0	10.0	10.0
Indicator value	N/A	N/A	N/A	0.8	1.3	0.3	0.7	0.8	0.7	1.2	0.6	0.8

Licensee Comments: none

Drill/Exercise Performance



Thresholds: White < 90.0% Yellow < 70.0%

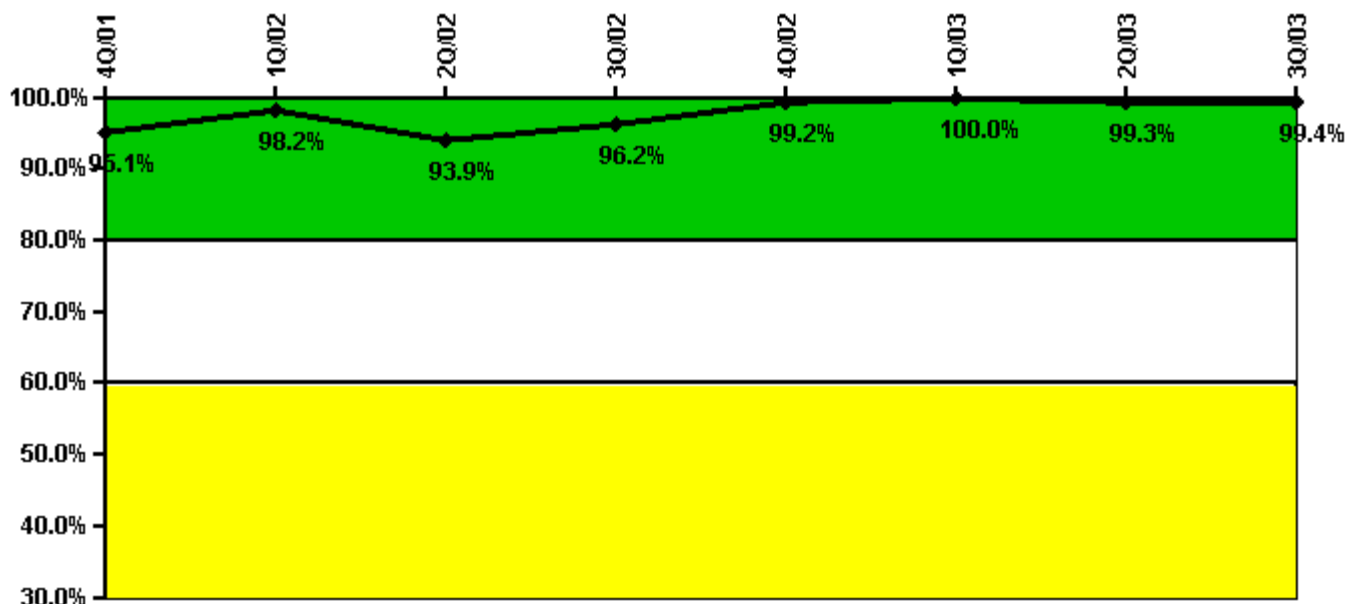
Notes

Drill/Exercise Performance	4Q/01	1Q/02	2Q/02	3Q/02	4Q/02	1Q/03	2Q/03	3Q/03
Successful opportunities	35.0	39.0	14.0	21.0	10.0	30.0	108.0	3.0
Total opportunities	35.0	41.0	15.0	21.0	10.0	32.0	108.0	3.0
Indicator value	96.7%	95.9%	95.6%	96.0%	95.8%	97.3%	98.2%	98.1%

Licensee Comments:

2Q/03: May data revised to reflect 89 successful opportunities and 89 actual opportunities vs 87 previously reported.

ERO Drill Participation



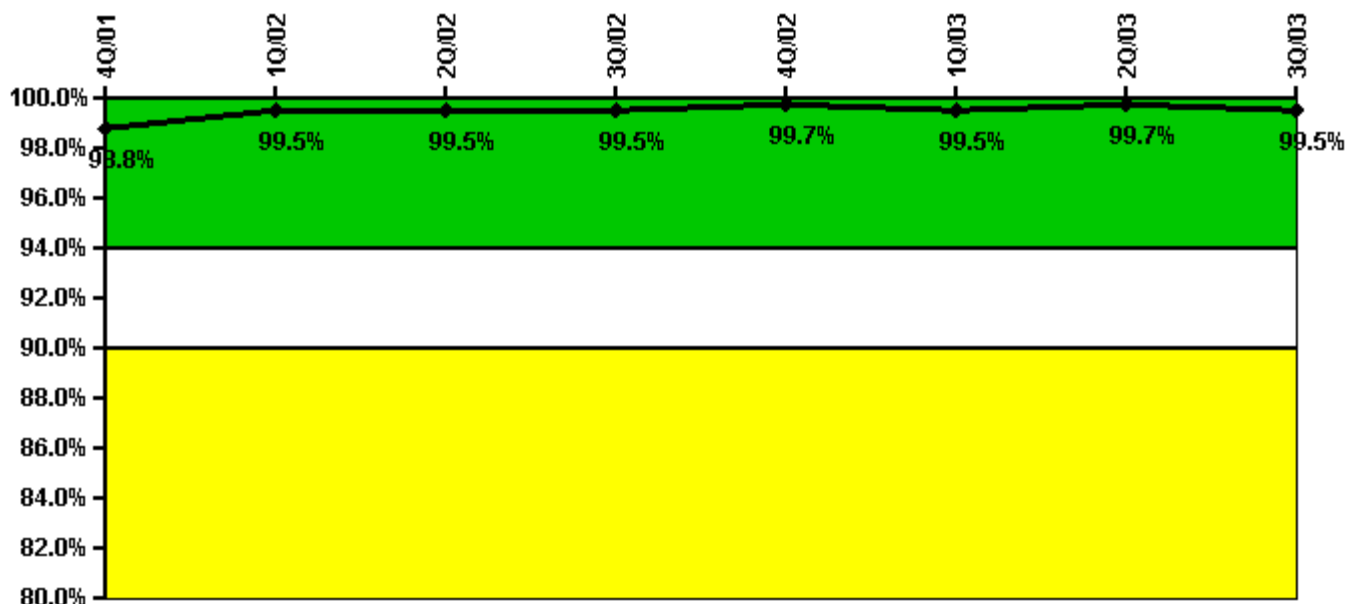
Thresholds: White < 80.0% Yellow < 60.0%

Notes

ERO Drill Participation	4Q/01	1Q/02	2Q/02	3Q/02	4Q/02	1Q/03	2Q/03	3Q/03
Participating Key personnel	98.0	112.0	123.0	127.0	127.0	124.0	152.0	153.0
Total Key personnel	103.0	114.0	131.0	132.0	128.0	124.0	153.0	154.0
Indicator value	95.1%	98.2%	93.9%	96.2%	99.2%	100.0%	99.3%	99.4%

Licensee Comments: none

Alert & Notification System



Thresholds: White < 94.0% Yellow < 90.0%

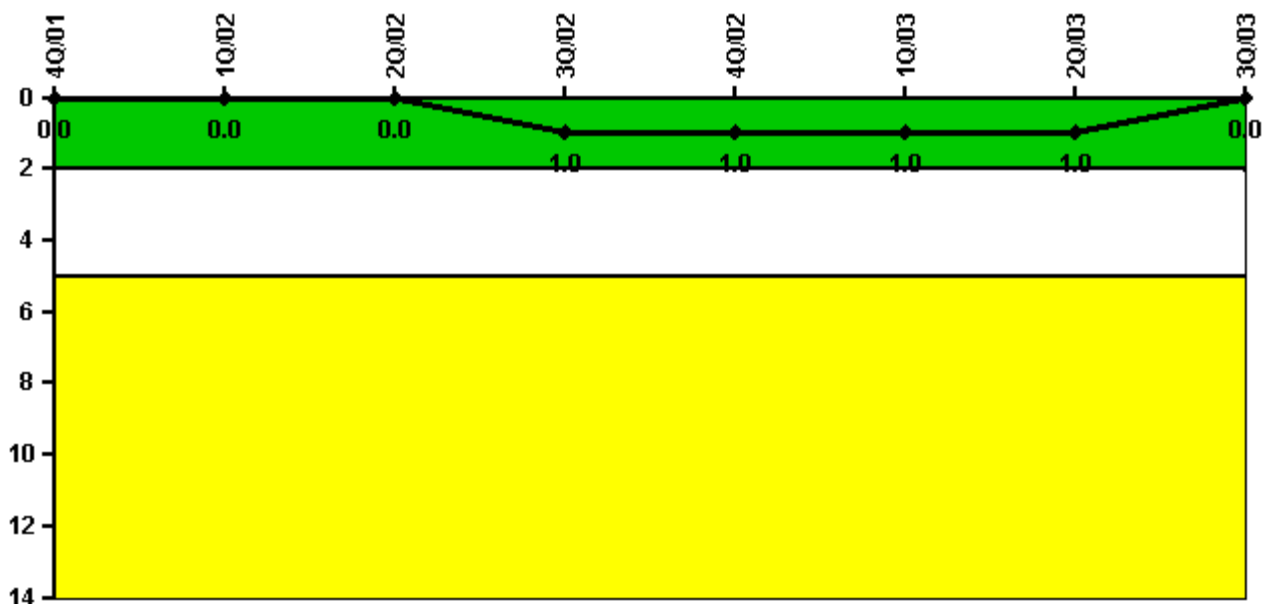
Notes

Alert & Notification System	4Q/01	1Q/02	2Q/02	3Q/02	4Q/02	1Q/03	2Q/03	3Q/03
Successful siren-tests	431	434	432	431	434	431	436	436
Total sirens-tests	434	434	434	434	434	434	436	441
Indicator value	98.8%	99.5%	99.5%	99.5%	99.7%	99.5%	99.7%	99.5%

Licensee Comments:

2Q/03: May and June data revised since it was determined to be "quarter-to-date" vs monthly data.

Occupational Exposure Control Effectiveness



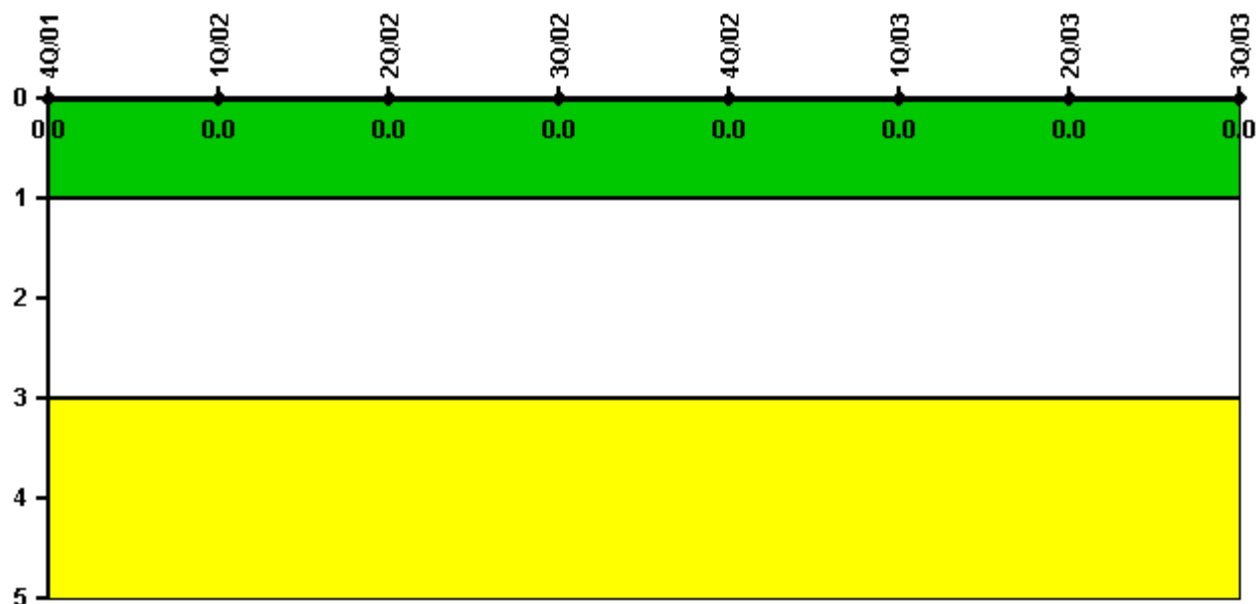
Thresholds: White > 2.0 Yellow > 5.0

Notes

Occupational Exposure Control Effectiveness	4Q/01	1Q/02	2Q/02	3Q/02	4Q/02	1Q/03	2Q/03	3Q/03
High radiation area occurrences	0	0	0	1	0	0	0	0
Very high radiation area occurrences	0	0	0	0	0	0	0	0
Unintended exposure occurrences	0	0	0	0	0	0	0	0
Indicator value	0	0	0	1	1	1	1	0

Licensee Comments: none

RETS/ODCM Radiological Effluent



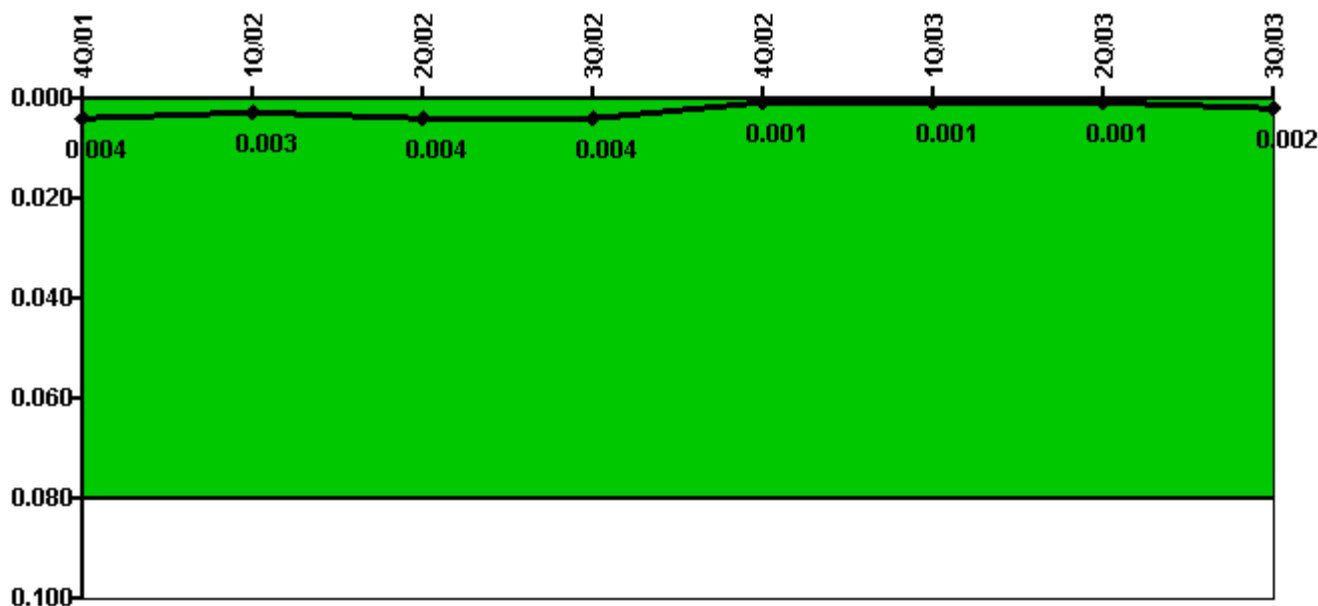
Thresholds: White > 1.0 Yellow > 3.0

Notes

RETS/ODCM Radiological Effluent	4Q/01	1Q/02	2Q/02	3Q/02	4Q/02	1Q/03	2Q/03	3Q/03
RETS/ODCM occurrences	0	0	0	0	0	0	0	0
Indicator value	0	0	0	0	0	0	0	0

Licensee Comments: none

Protected Area Security Performance Index



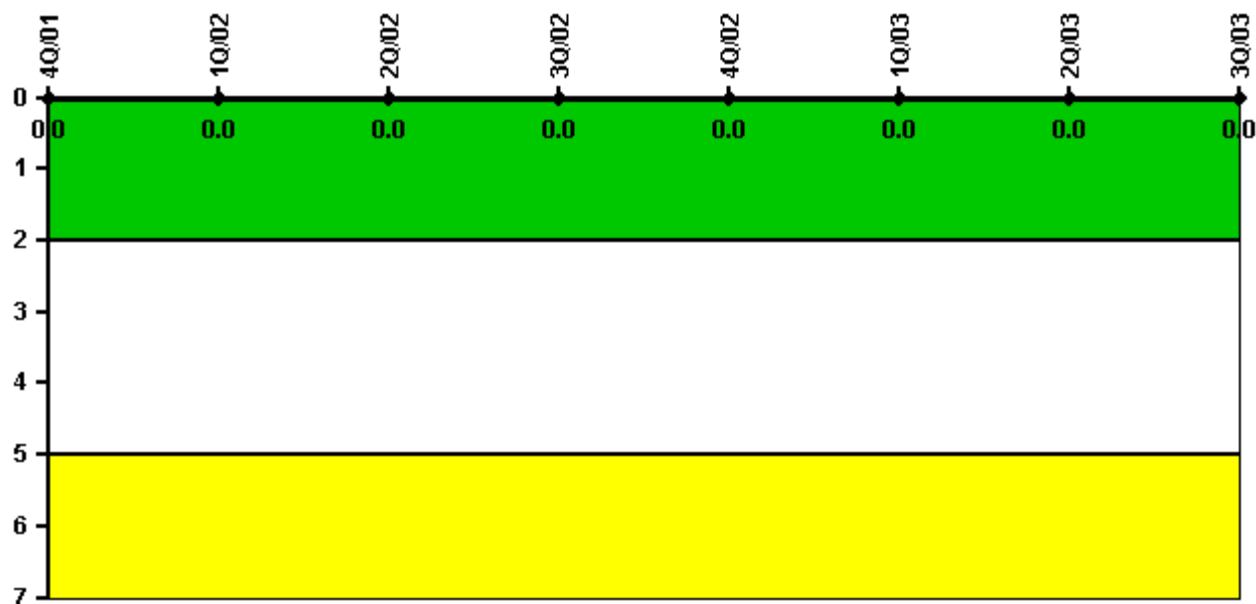
Thresholds: White > 0.080

Notes

Protected Area Security Performance Index	4Q/01	1Q/02	2Q/02	3Q/02	4Q/02	1Q/03	2Q/03	3Q/03
IDS compensatory hours	53.40	0	4.90	1.90	2.50	3.50	0	21.90
CCTV compensatory hours	0	0	0	10.2	0	0	0	0
IDS normalization factor	1.00	1.00	1.00	1.00	1.00	1.00	1.00	1.00
CCTV normalization factor	1.0	1.0	1.0	1.0	1.0	1.0	1.0	1.0
Index Value	0.004	0.003	0.004	0.004	0.001	0.001	0.001	0.002

Licensee Comments: none

Personnel Screening Program



Thresholds: White > 2.0 Yellow > 5.0

Notes

Personnel Screening Program	4Q/01	1Q/02	2Q/02	3Q/02	4Q/02	1Q/03	2Q/03	3Q/03
Program failures	0	0	0	0	0	0	0	0
Indicator value	0	0	0	0	0	0	0	0

Licensee Comments: none

FFD/Personnel Reliability



Thresholds: White > 2.0 Yellow > 5.0

Notes

FFD/Personnel Reliability	4Q/01	1Q/02	2Q/02	3Q/02	4Q/02	1Q/03	2Q/03	3Q/03
Program Failures	0	0	0	0	0	0	0	0
Indicator value	0	0	0	0	0	0	0	0

Licensee Comments: none

▲ [PI Summary](#) | [Inspection Findings Summary](#) | [Reactor Oversight Process](#)

Last Modified: October 22, 2003