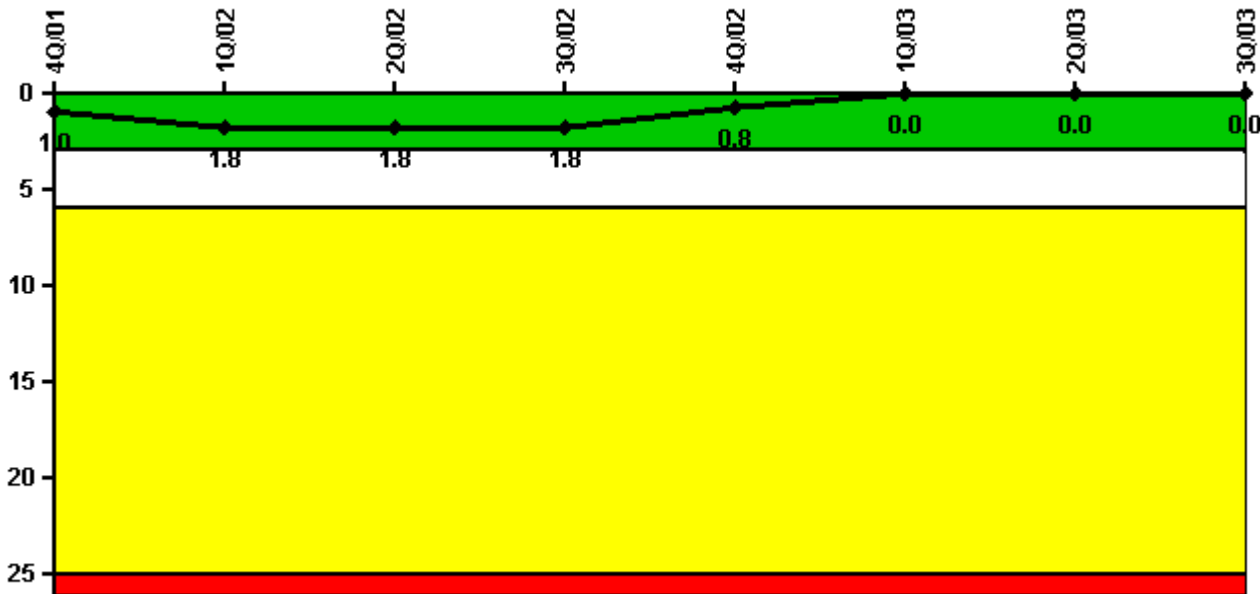


Monticello

3Q/2003 Performance Indicators

Licensee's General Comments: Revised Technical Specification limit for RCS Activity for time period October 2001 to June 2003. Revision did not affect indicator color. Revised number of successful Alert Notification System tests for 1st quarter 2003. Revision did not affect indicator color.

Unplanned Scrams per 7000 Critical Hrs



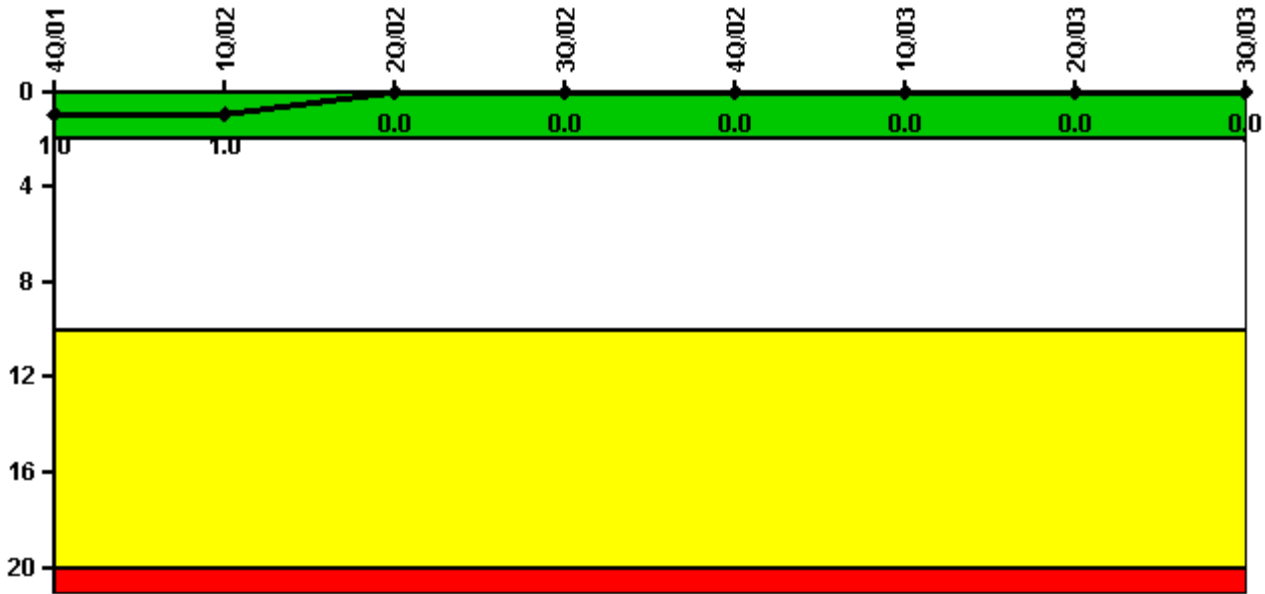
Thresholds: White > 3.0 Yellow > 6.0 Red > 25.0

Notes

Unplanned Scrams per 7000 Critical Hrs	4Q/01	1Q/02	2Q/02	3Q/02	4Q/02	1Q/03	2Q/03	3Q/03
Unplanned scrams	1.0	1.0	0	0	0	0	0	0
Critical hours	1205.0	2072.0	2183.0	2208.0	2209.0	2160.0	1453.7	2208.0
Indicator value	1.0	1.8	1.8	1.8	0.8	0	0	0

Licensee Comments: none

Scrams with Loss of Normal Heat Removal



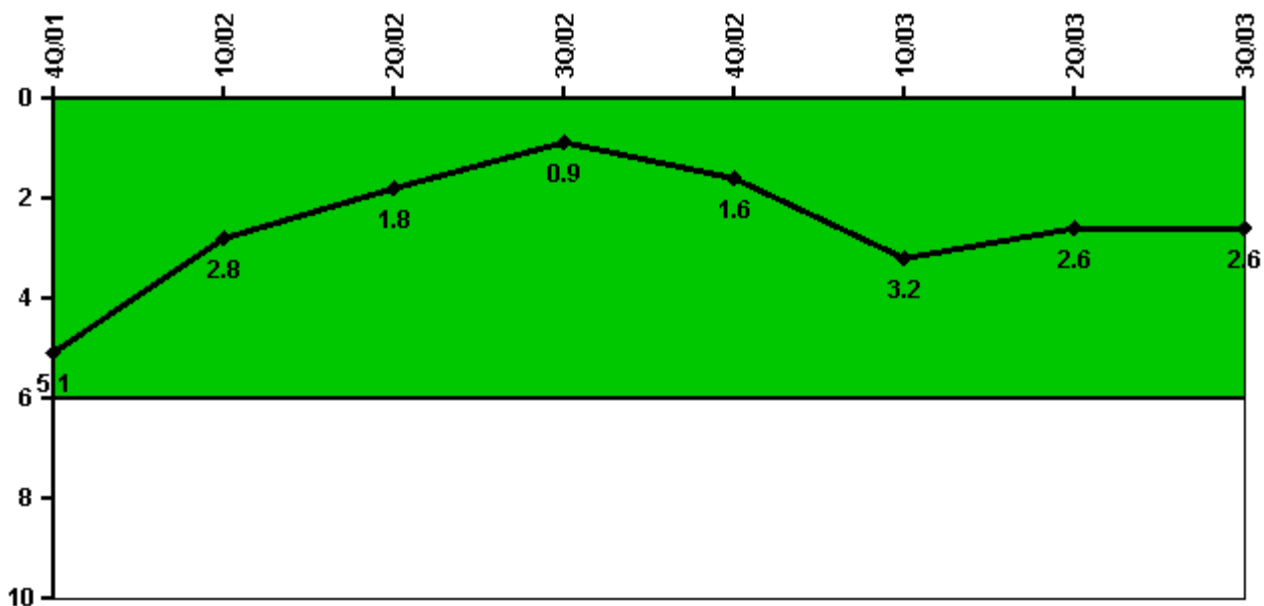
Thresholds: White > 2.0 Yellow > 10.0 Red > 20.0

Notes

Scrams with Loss of Normal Heat Removal	4Q/01	1Q/02	2Q/02	3Q/02	4Q/02	1Q/03	2Q/03	3Q/03
Scrams	0	0	0	0	0	0	0	0
Indicator value	1.0	1.0	0	0	0	0	0	0

Licensee Comments: none

Unplanned Power Changes per 7000 Critical Hrs



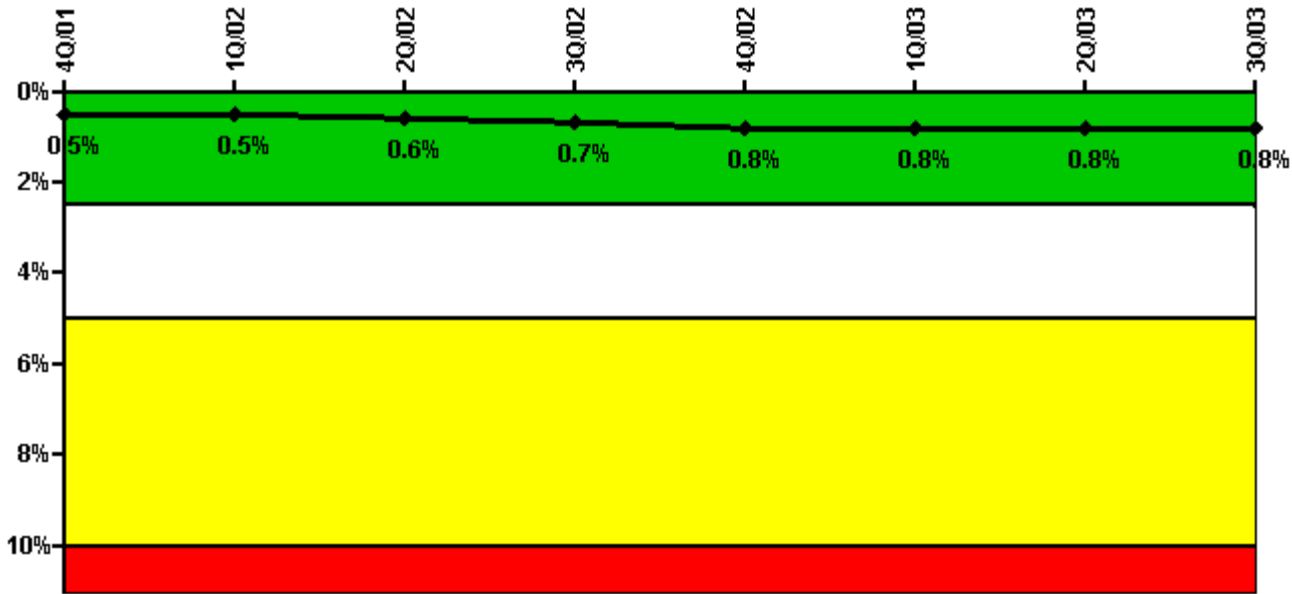
Thresholds: White > 6.0

Notes

Unplanned Power Changes per 7000 Critical Hrs	4Q/01	1Q/02	2Q/02	3Q/02	4Q/02	1Q/03	2Q/03	3Q/03
Unplanned power changes	0	0	1.0	0	1.0	2.0	0	0
Critical hours	1205.0	2072.0	2183.0	2208.0	2209.0	2160.0	1453.7	2208.0
Indicator value	5.1	2.8	1.8	0.9	1.6	3.2	2.6	2.6

Licensee Comments: none

Safety System Unavailability, Emergency AC Power



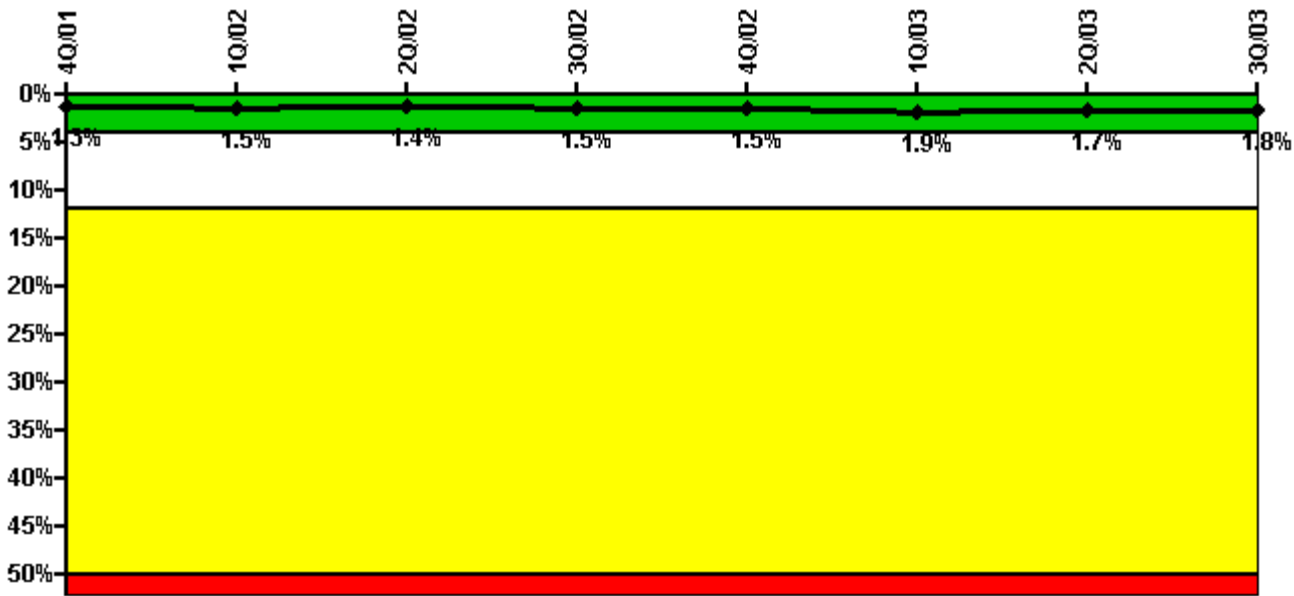
Thresholds: White > 2.5% Yellow > 5.0% Red > 10.0%

Notes

Safety System Unavailability, Emergency AC Power	4Q/01	1Q/02	2Q/02	3Q/02	4Q/02	1Q/03	2Q/03	3Q/03
Train 1								
Planned unavailable hours	25.93	12.02	33.27	7.57	19.25	10.82	0	4.98
Unplanned unavailable hours	0	0	2.33	2.15	2.83	0	14.37	0
Fault exposure hours	0	0	0	0	0	0	0	0
Effective Reset hours	0	0	0	0	0	0	0	0
Required hours	2209.00	2160.00	2183.00	2208.00	2209.00	2160.00	2183.00	2208.00
Train 2								
Planned unavailable hours	5.25	6.88	8.24	9.20	9.62	32.40	5.68	7.95
Unplanned unavailable hours	0	0	31.78	52.40	34.45	0	0	0
Fault exposure hours	0	0	0	0	0	0	0	0
Effective Reset hours	0	0	0	0	0	0	0	0
Required hours	2209.00	2160.00	2183.00	2208.00	2209.00	2160.00	2183.00	2208.00
Indicator value	0.5%	0.5%	0.6%	0.7%	0.8%	0.8%	0.8%	0.8%

Licensee Comments: none

Safety System Unavailability, High Pressure Injection System (HPCI)



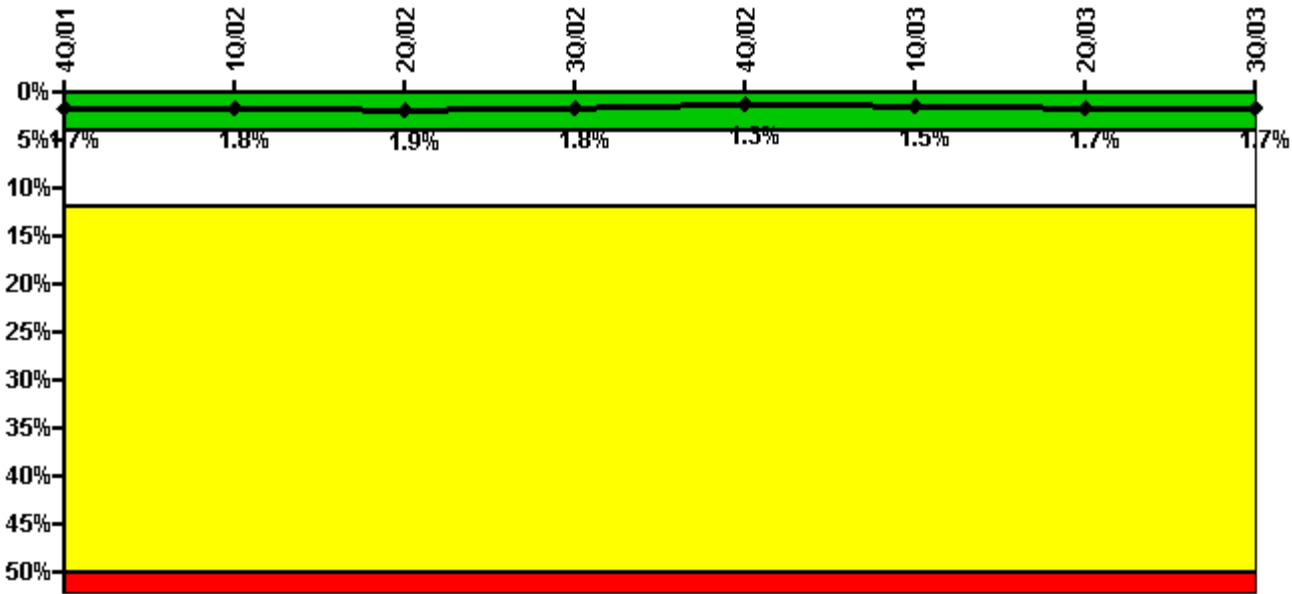
Thresholds: White > 4.0% Yellow > 12.0% Red > 50.0%

Notes

Safety System Unavailability, High Pressure Injection System (HPCI)	4Q/01	1Q/02	2Q/02	3Q/02	4Q/02	1Q/03	2Q/03	3Q/03
Train 1								
Planned unavailable hours	20.85	42.10	53.00	28.40	38.13	37.58	10.17	20.95
Unplanned unavailable hours	0	0	0	0	0	78.23	0	0
Fault exposure hours	0	0	0	0	0	0	0	0
Effective Reset hours	0	0	0	0	0	0	0	0
Required hours	1205.00	2072.00	2183.00	2208.00	2209.00	2160.00	1453.70	2208.00
Indicator value	1.3%	1.5%	1.4%	1.5%	1.5%	1.9%	1.7%	1.8%

Licensee Comments: none

Safety System Unavailability, Heat Removal System (RCIC)



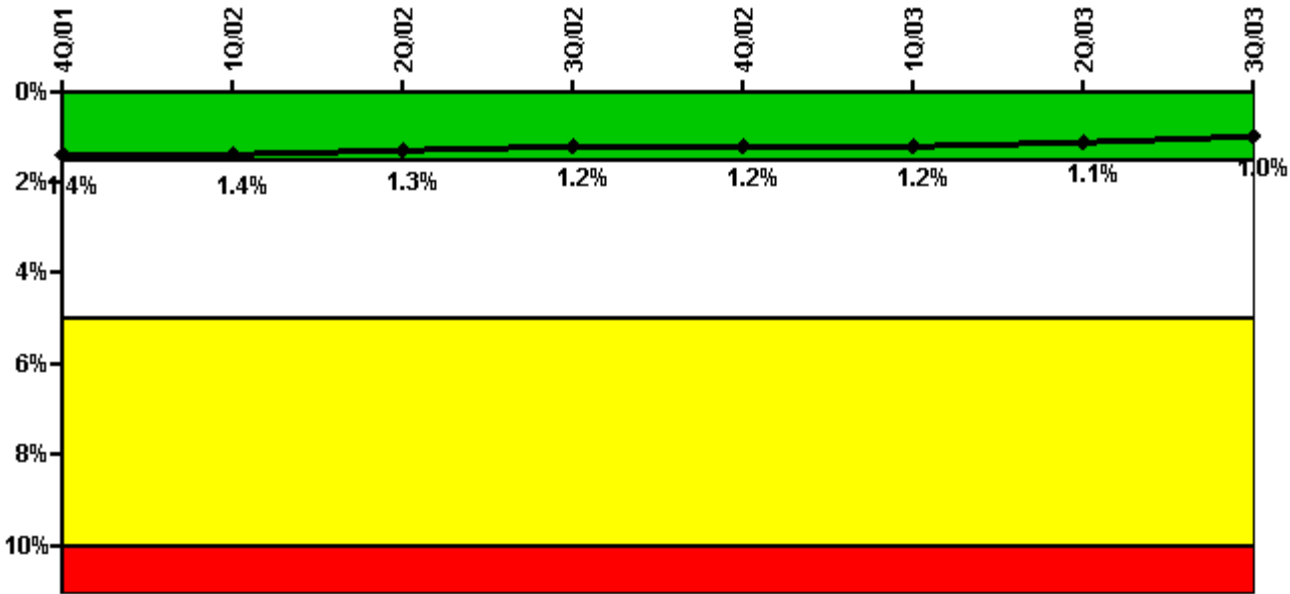
Thresholds: White > 4.0% Yellow > 12.0% Red > 50.0%

Notes

Safety System Unavailability, Heat Removal System (RCIC)	4Q/01	1Q/02	2Q/02	3Q/02	4Q/02	1Q/03	2Q/03	3Q/03
Train 1								
Planned unavailable hours	23.07	19.15	7.23	24.25	36.47	78.02	35.22	22.27
Unplanned unavailable hours	0	0	31.90	0	0	0	0	0
Fault exposure hours	0	0	0	0	0	0	0	0
Effective Reset hours	0	0	0	0	0	0	0	0
Required hours	1205.00	2072.00	2183.00	2208.00	2209.00	2160.00	1453.70	2208.00
Indicator value	1.7%	1.8%	1.9%	1.8%	1.3%	1.5%	1.7%	1.7%

Licensee Comments: none

Safety System Unavailability, Residual Heat Removal System



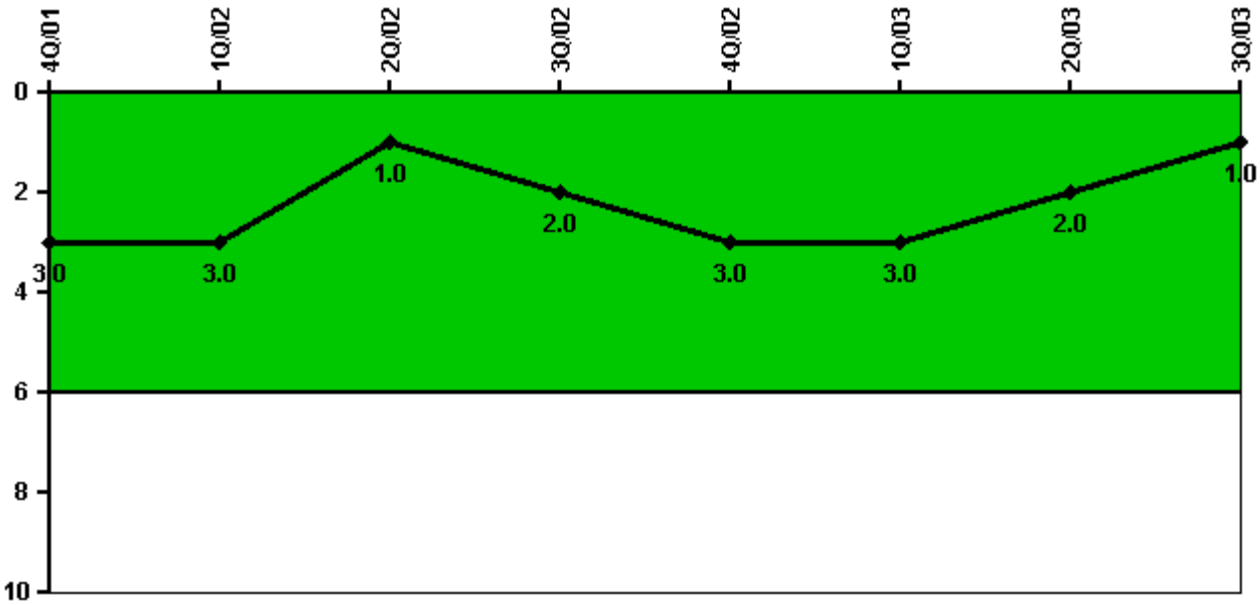
Thresholds: White > 1.5% Yellow > 5.0% Red > 10.0%

Notes

Safety System Unavailability, Residual Heat Removal System	4Q/01	1Q/02	2Q/02	3Q/02	4Q/02	1Q/03	2Q/03	3Q/03
Train 1								
Planned unavailable hours	9.33	7.37	0	6.43	20.22	7.67	13.95	6.72
Unplanned unavailable hours	2.87	0	0	0	0	0	0	0
Fault exposure hours	0	0	0	0	0	0	0	0
Effective Reset hours	0	0	0	0	0	0	0	0
Required hours	2209.00	2160.00	2183.00	2208.00	2209.00	2160.00	2183.00	2208.00
Train 2								
Planned unavailable hours	124.82	0.65	12.93	10.23	0	26.92	17.93	9.38
Unplanned unavailable hours	0	0	0	0	0	0	0	0
Fault exposure hours	0	0	0	0	0	0	0	0
Effective Reset hours	0	0	0	0	0	0	0	0
Required hours	2209.00	2160.00	2183.00	2208.00	2209.00	2160.00	2183.00	2208.00
Indicator value	1.4%	1.4%	1.3%	1.2%	1.2%	1.2%	1.1%	1.0%

Licensee Comments: none

Safety System Functional Failures (BWR)



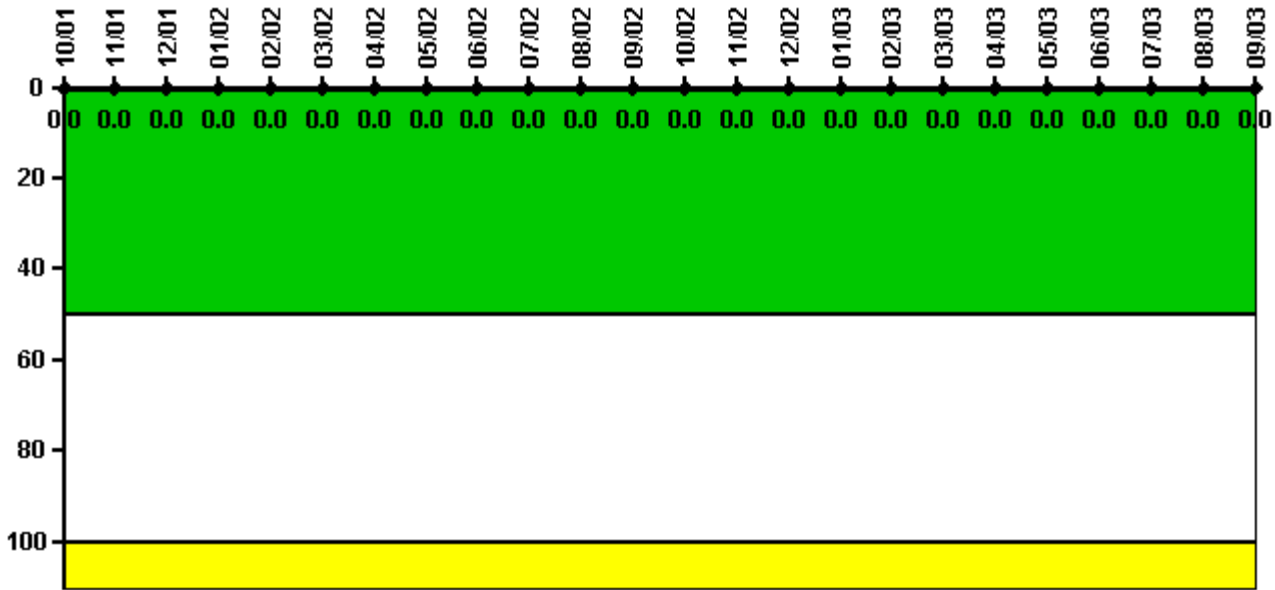
Thresholds: White > 6.0

Notes

Safety System Functional Failures (BWR)	4Q/01	1Q/02	2Q/02	3Q/02	4Q/02	1Q/03	2Q/03	3Q/03
Safety System Functional Failures	0	0	1	1	1	0	0	0
Indicator value	3	3	1	2	3	3	2	1

Licensee Comments: none

Reactor Coolant System Activity



Thresholds: White > 50.0 Yellow > 100.0

Notes

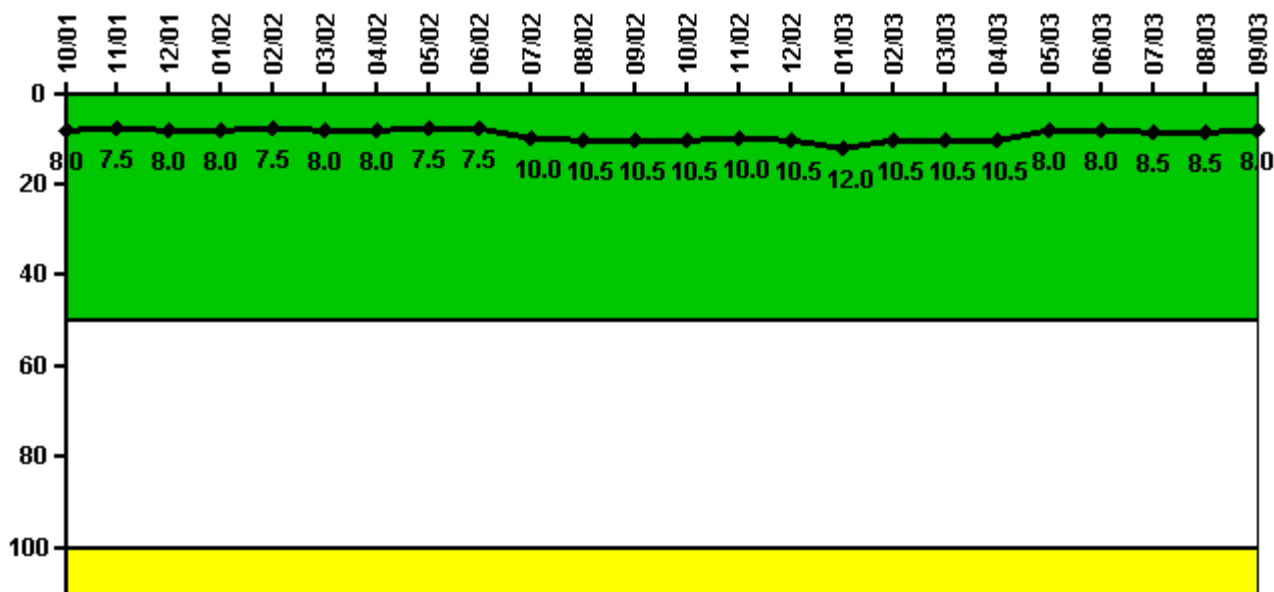
Reactor Coolant System Activity	10/01	11/01	12/01	1/02	2/02	3/02	4/02	5/02	6/02	7/02	8/02	9/02
Maximum activity	0.000304	0.000242	0.000283	0.000229	0.000214	0.000229	0.000295	0.000217	0.000139	0.000232	0.000182	0.000157
Technical specification limit	2.0	2.0	2.0	2.0	2.0	2.0	2.0	2.0	2.0	2.0	2.0	2.0
Indicator value	0	0	0	0	0	0	0	0	0	0	0	0

Reactor Coolant System Activity	10/02	11/02	12/02	1/03	2/03	3/03	4/03	5/03	6/03	7/03	8/03	9/03
Maximum activity	0.000213	0.000232	0.000209	0.000159	0.000180	0.000153	0.000172	0.000140	0.000154	0.000161	0.000158	0.000178
Technical specification limit	2.0	2.0	2.0	2.0	2.0	2.0	2.0	2.0	2.0	2.0	2.0	2.0
Indicator value	0	0	0	0	0	0	0	0	0	0	0	0

Licensee Comments:

9/03: Revised Technical Specification limit for time period October 2001 to June 2003. Revision did not affect the color of the indicator.

Reactor Coolant System Leakage



Thresholds: White > 50.0 Yellow > 100.0

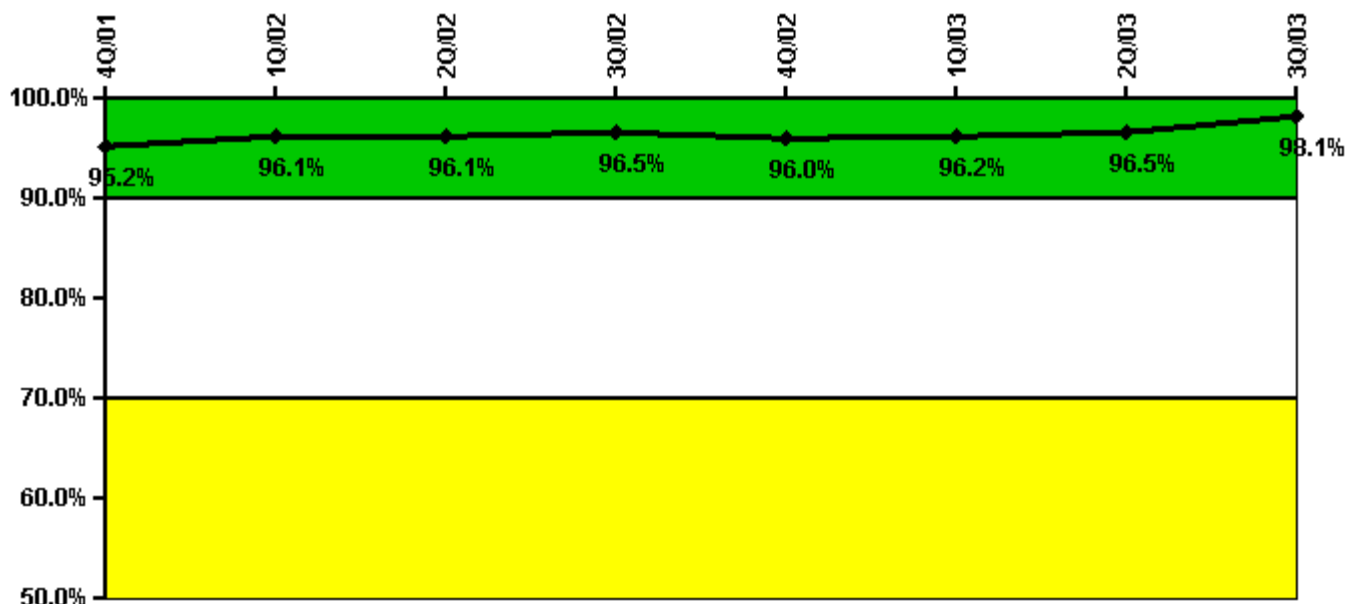
Notes

Reactor Coolant System Leakage	10/01	11/01	12/01	1/02	2/02	3/02	4/02	5/02	6/02	7/02	8/02	9/02
Maximum leakage	1.600	1.500	1.600	1.600	1.500	1.600	1.600	1.500	1.500	2.000	2.100	2.100
Technical specification limit	20.0	20.0	20.0	20.0	20.0	20.0	20.0	20.0	20.0	20.0	20.0	20.0
Indicator value	8.0	7.5	8.0	8.0	7.5	8.0	8.0	7.5	7.5	10.0	10.5	10.5

Reactor Coolant System Leakage	10/02	11/02	12/02	1/03	2/03	3/03	4/03	5/03	6/03	7/03	8/03	9/03
Maximum leakage	2.100	2.000	2.100	2.400	2.100	2.100	2.100	1.600	1.600	1.700	1.700	1.600
Technical specification limit	20.0	20.0	20.0	20.0	20.0	20.0	20.0	20.0	20.0	20.0	20.0	20.0
Indicator value	10.5	10.0	10.5	12.0	10.5	10.5	10.5	8.0	8.0	8.5	8.5	8.0

Licensee Comments: none

Drill/Exercise Performance



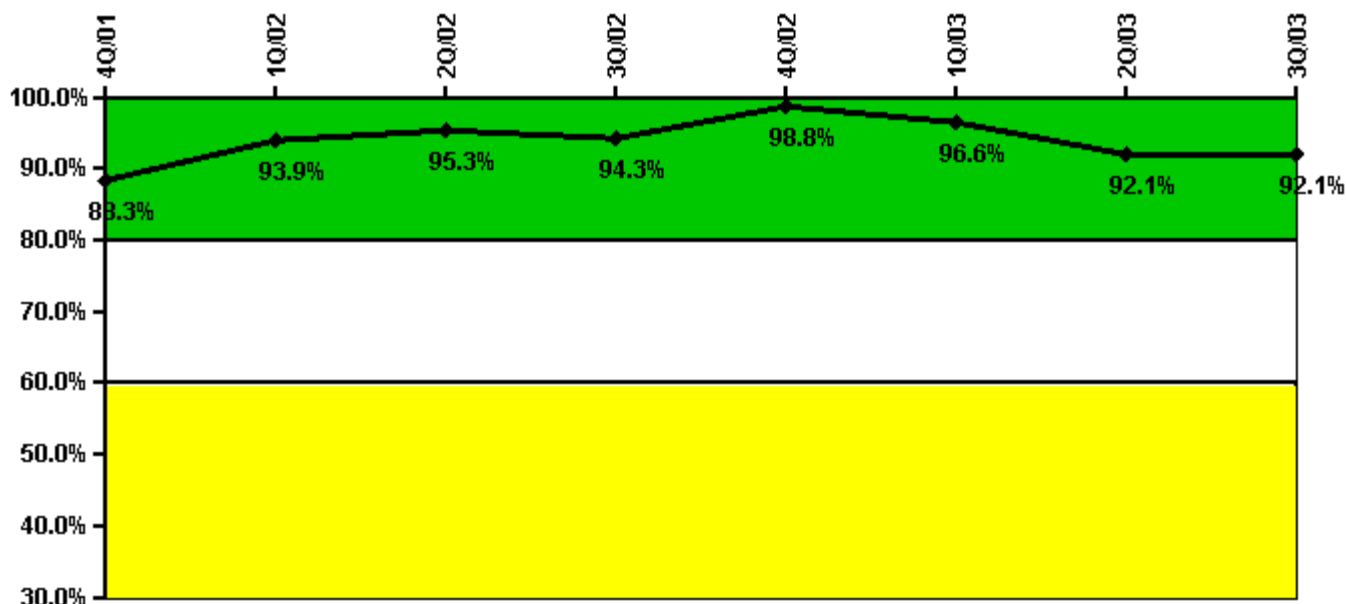
Thresholds: White < 90.0% Yellow < 70.0%

Notes

Drill/Exercise Performance	4Q/01	1Q/02	2Q/02	3Q/02	4Q/02	1Q/03	2Q/03	3Q/03
Successful opportunities	24.0	70.0	36.0	32.0	13.0	46.0	14.0	20.0
Total opportunities	24.0	72.0	36.0	32.0	14.0	47.0	15.0	20.0
Indicator value	95.2%	96.1%	96.1%	96.5%	96.0%	96.2%	96.5%	98.1%

Licensee Comments: none

ERO Drill Participation



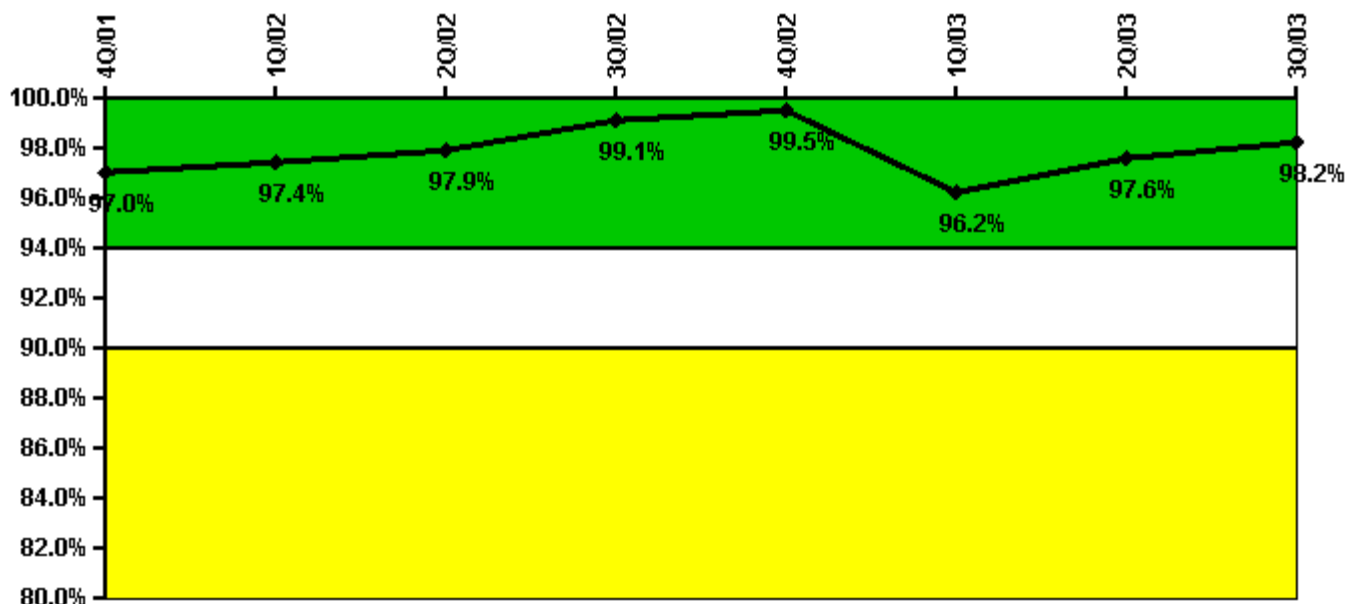
Thresholds: White < 80.0% Yellow < 60.0%

Notes

ERO Drill Participation	4Q/01	1Q/02	2Q/02	3Q/02	4Q/02	1Q/03	2Q/03	3Q/03
Participating Key personnel	83.0	77.0	82.0	82.0	85.0	85.0	82.0	82.0
Total Key personnel	94.0	82.0	86.0	87.0	86.0	88.0	89.0	89.0
Indicator value	88.3%	93.9%	95.3%	94.3%	98.8%	96.6%	92.1%	92.1%

Licensee Comments: none

Alert & Notification System



Thresholds: White < 94.0% Yellow < 90.0%

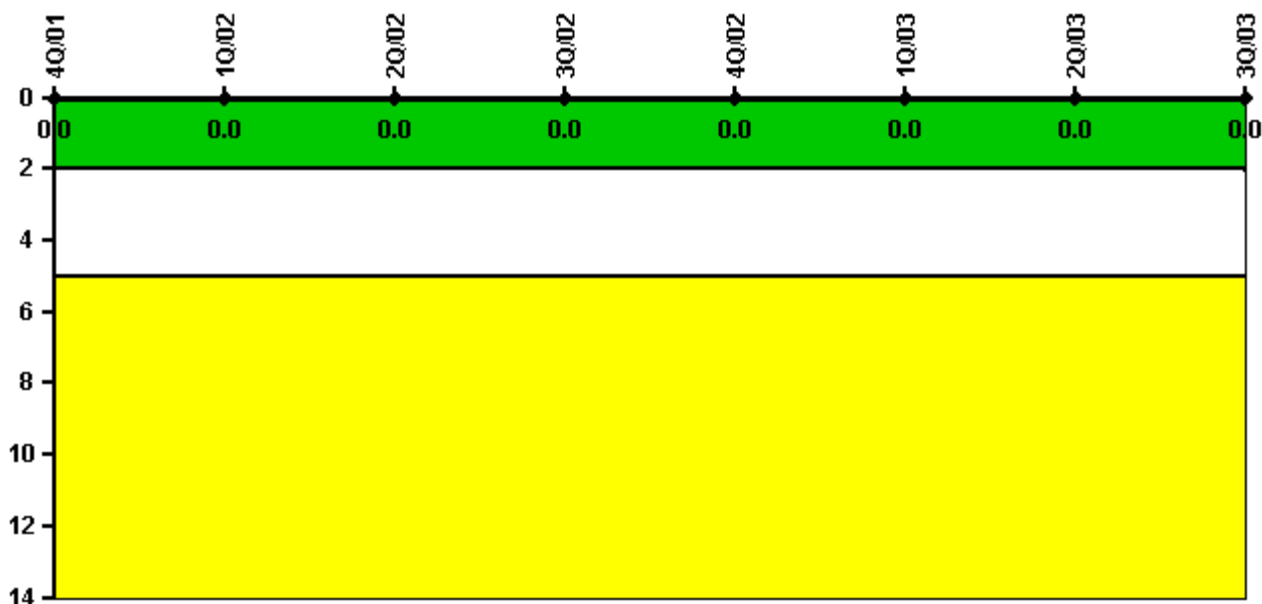
Notes

Alert & Notification System	4Q/01	1Q/02	2Q/02	3Q/02	4Q/02	1Q/03	2Q/03	3Q/03
Successful siren-tests	239	241	241	242	243	1008	1183	1182
Total sirens-tests	243	243	243	243	243	1073	1183	1183
Indicator value	97.0%	97.4%	97.9%	99.1%	99.5%	96.2%	97.6%	98.2%

Licensee Comments:

3Q/03: Revised number for successful tests for 1st quarter 2003. Revision had no affect on the color of the indicator.

Occupational Exposure Control Effectiveness



Thresholds: White > 2.0 Yellow > 5.0

Notes

Occupational Exposure Control Effectiveness	4Q/01	1Q/02	2Q/02	3Q/02	4Q/02	1Q/03	2Q/03	3Q/03
High radiation area occurrences	0	0	0	0	0	0	0	0
Very high radiation area occurrences	0	0	0	0	0	0	0	0
Unintended exposure occurrences	0	0	0	0	0	0	0	0
Indicator value	0	0	0	0	0	0	0	0

Licensee Comments: none

RETS/ODCM Radiological Effluent



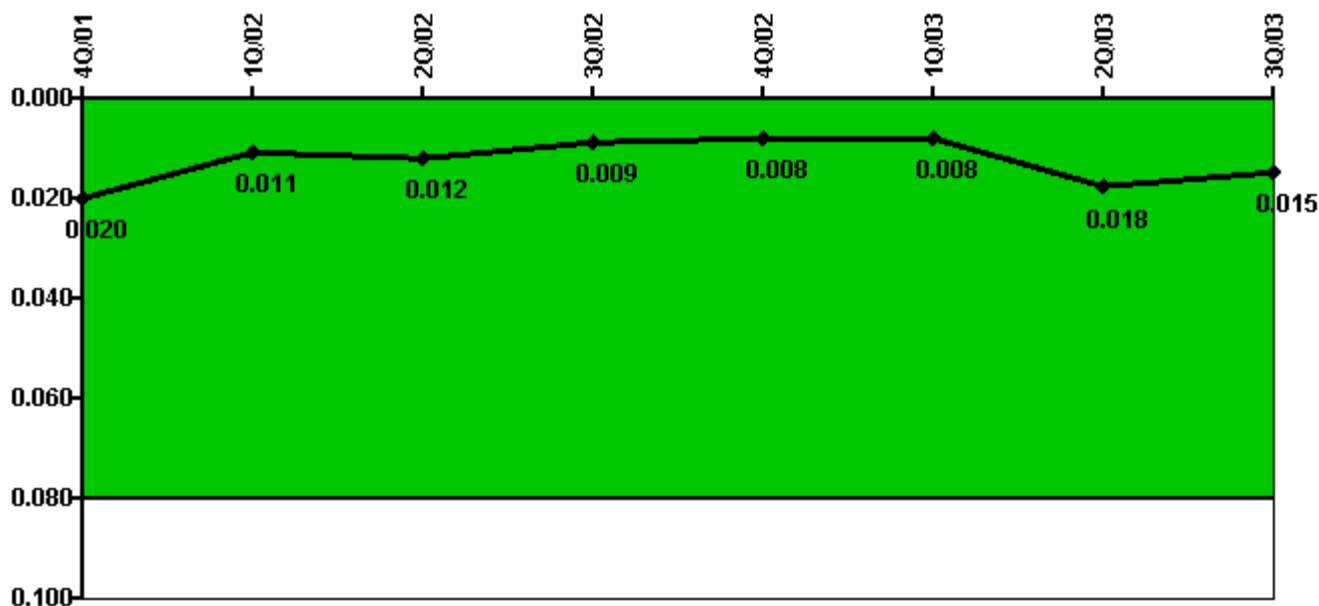
Thresholds: White > 1.0 Yellow > 3.0

Notes

RETS/ODCM Radiological Effluent	4Q/01	1Q/02	2Q/02	3Q/02	4Q/02	1Q/03	2Q/03	3Q/03
RETS/ODCM occurrences	0	0	0	0	0	0	0	0
Indicator value	0	0	0	0	0	0	0	0

Licensee Comments: none

Protected Area Security Performance Index



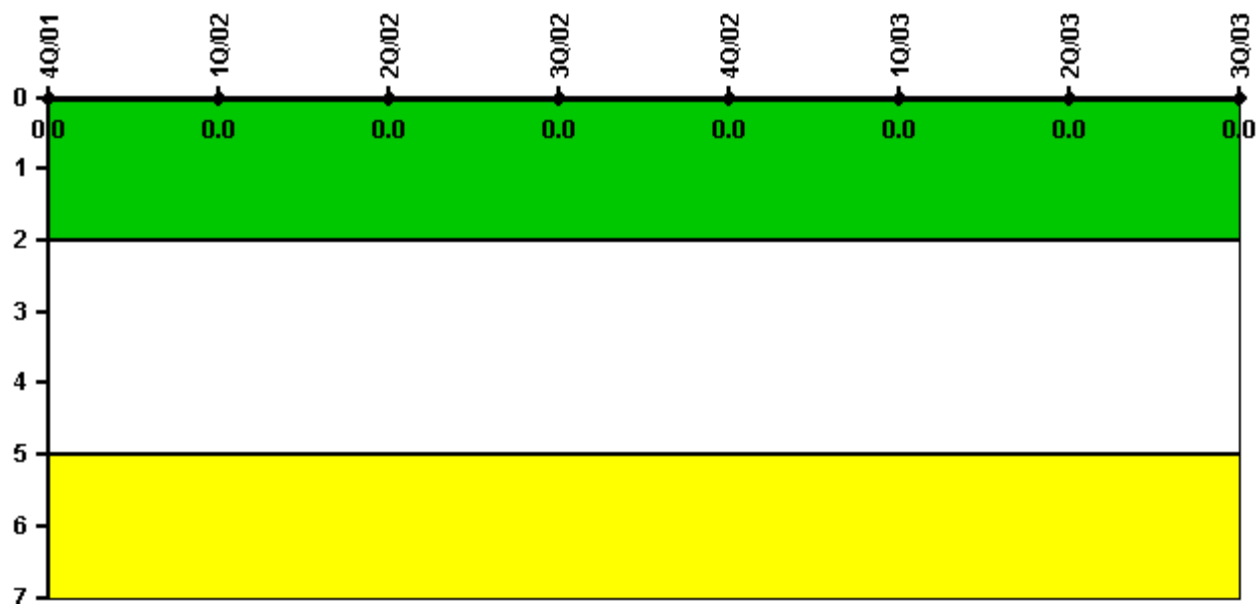
Thresholds: White > 0.080

Notes

Protected Area Security Performance Index	4Q/01	1Q/02	2Q/02	3Q/02	4Q/02	1Q/03	2Q/03	3Q/03
IDS compensatory hours	39.99	23.54	23.14	75.14	21.76	17.90	197.26	32.04
CCTV compensatory hours	0	0	0	0	2.2	0	0	0
IDS normalization factor	1.00	1.00	1.00	1.00	1.00	1.00	1.00	1.00
CCTV normalization factor	1.0	1.0	1.0	1.0	1.0	1.0	1.0	1.0
Index Value	0.020	0.011	0.012	0.009	0.008	0.008	0.018	0.015

Licensee Comments: none

Personnel Screening Program



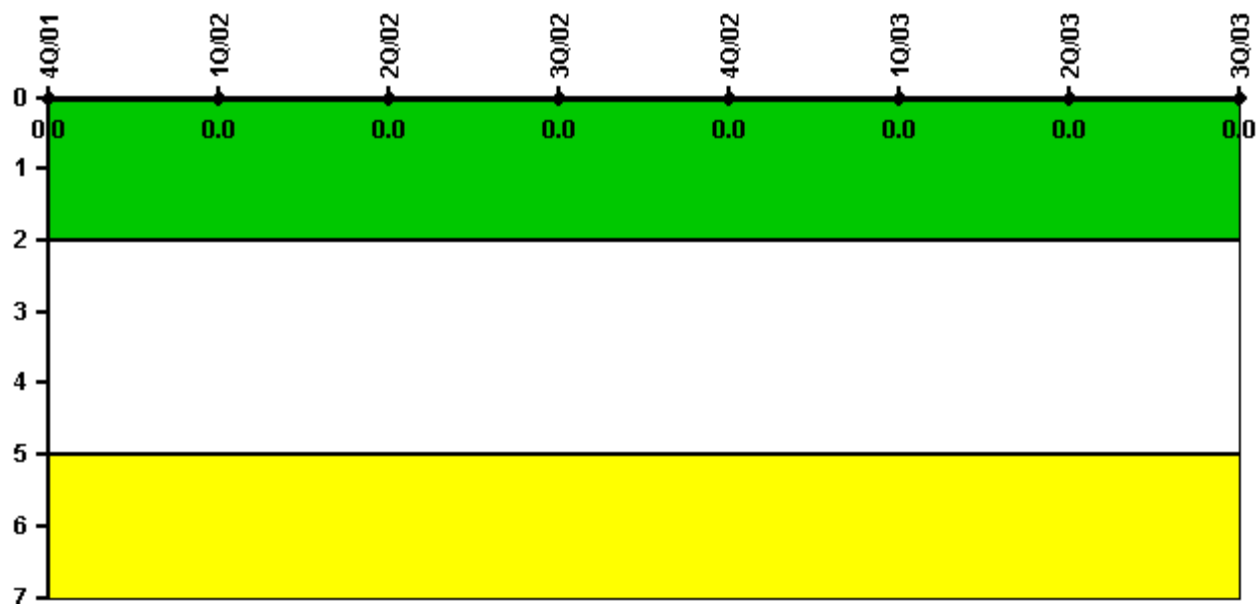
Thresholds: White > 2.0 Yellow > 5.0

Notes

Personnel Screening Program	4Q/01	1Q/02	2Q/02	3Q/02	4Q/02	1Q/03	2Q/03	3Q/03
Program failures	0	0	0	0	0	0	0	0
Indicator value	0	0	0	0	0	0	0	0

Licensee Comments: none

FFD/Personnel Reliability



Thresholds: White > 2.0 Yellow > 5.0

Notes

FFD/Personnel Reliability	4Q/01	1Q/02	2Q/02	3Q/02	4Q/02	1Q/03	2Q/03	3Q/03
Program Failures	0	0	0	0	0	0	0	0
Indicator value	0	0	0	0	0	0	0	0

Licensee Comments: none

▲ [PI Summary](#) | [Inspection Findings Summary](#) | [Reactor Oversight Process](#)

Last Modified: October 22, 2003