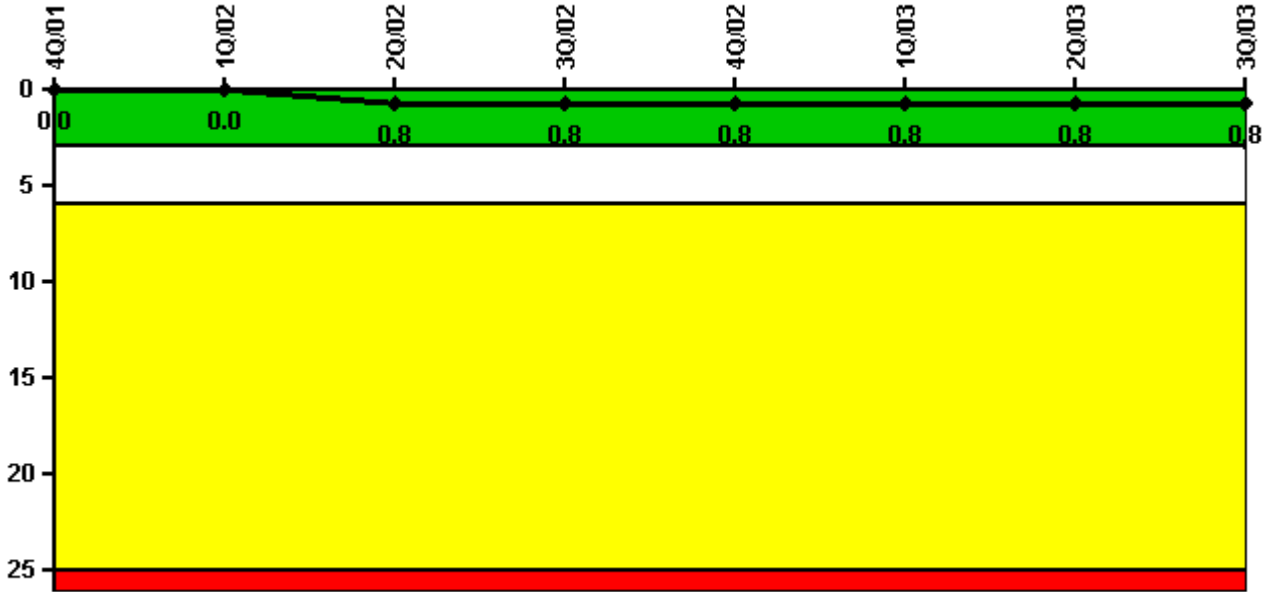


# Limerick 1

## 3Q/2003 Performance Indicators

Licensee's General Comments: none

### Unplanned Scrams per 7000 Critical Hrs



Thresholds: White > 3.0 Yellow > 6.0 Red > 25.0

### Notes

Unplanned Scrams per 7000 Critical Hrs	4Q/01	1Q/02	2Q/02	3Q/02	4Q/02	1Q/03	2Q/03	3Q/03
Unplanned scrams	0	0	1.0	0	0	0	1.0	0
Critical hours	2209.0	1797.5	2098.7	2208.0	2209.0	2160.0	2121.1	2208.0
Indicator value	0	0	0.8	0.8	0.8	0.8	0.8	0.8

Licensee Comments: none

### Scrams with Loss of Normal Heat Removal



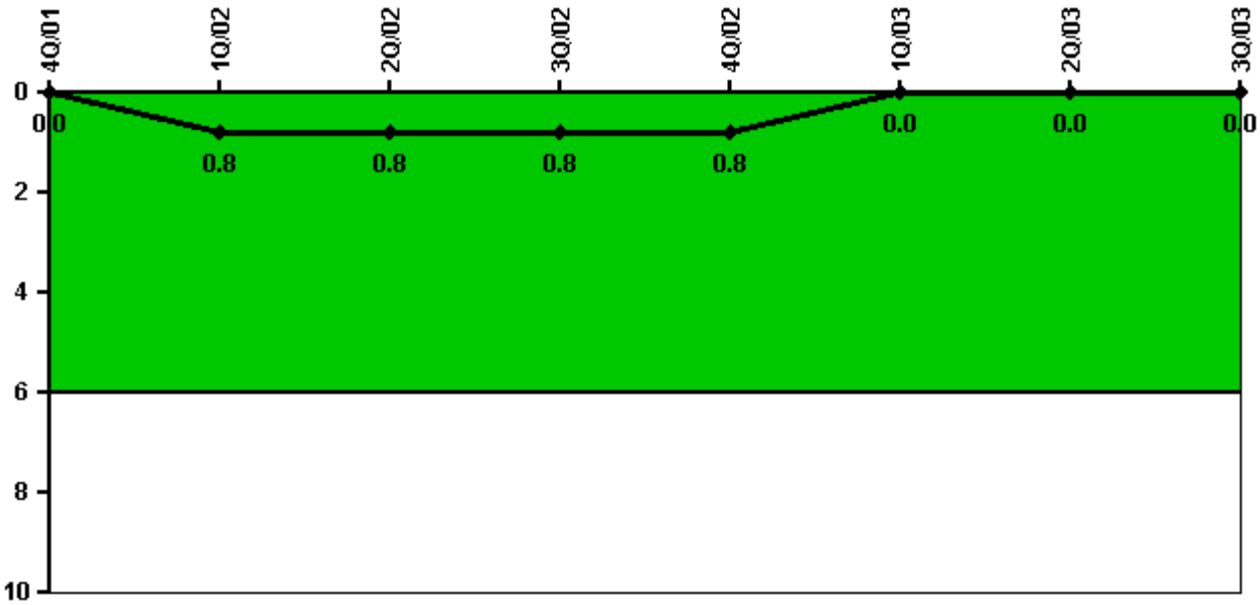
Thresholds: White > 2.0 Yellow > 10.0 Red > 20.0

#### Notes

Scrams with Loss of Normal Heat Removal	4Q/01	1Q/02	2Q/02	3Q/02	4Q/02	1Q/03	2Q/03	3Q/03
Scrams	0	0	0	0	0	0	0	0
Indicator value	1.0	1.0	0	0	0	0	0	0

Licensee Comments: none

### Unplanned Power Changes per 7000 Critical Hrs



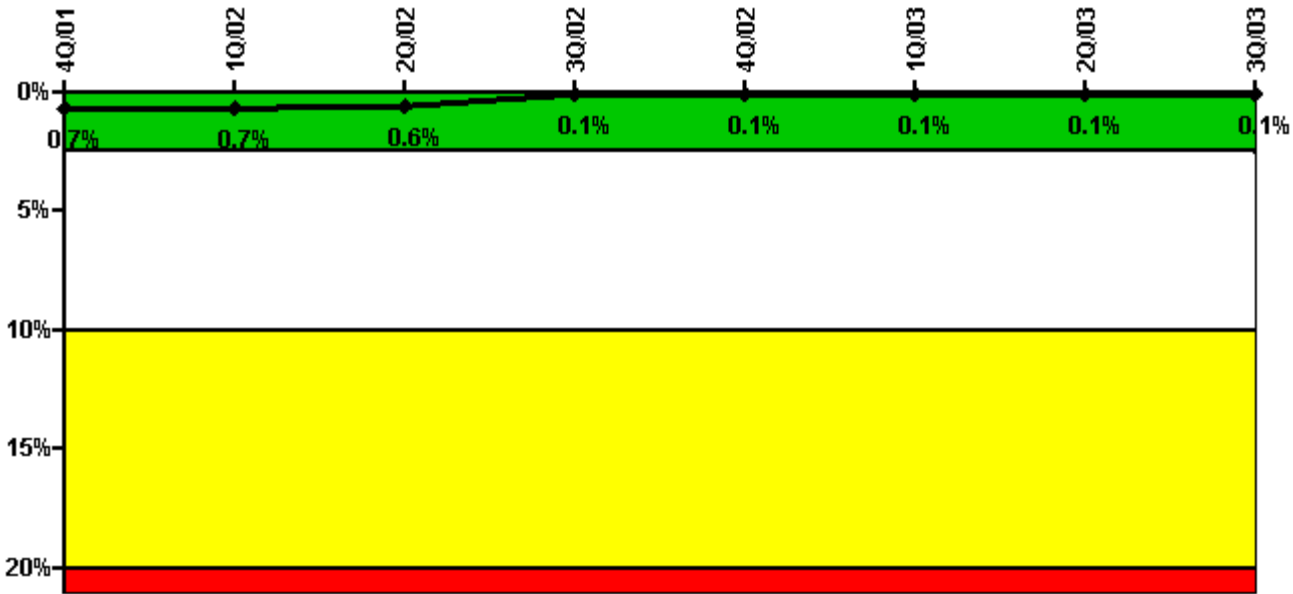
Thresholds: White > 6.0

#### Notes

Unplanned Power Changes per 7000 Critical Hrs	4Q/01	1Q/02	2Q/02	3Q/02	4Q/02	1Q/03	2Q/03	3Q/03
Unplanned power changes	0	1.0	0	0	0	0	0	0
Critical hours	2209.0	1797.5	2098.7	2208.0	2209.0	2160.0	2121.1	2208.0
Indicator value	0	0.8	0.8	0.8	0.8	0	0	0

Licensee Comments: none

### Safety System Unavailability, Emergency AC Power, >2EDG



Thresholds: White > 2.5% Yellow > 10.0% Red > 20.0%

#### Notes

Safety System Unavailability, Emergency AC Power, >2EDG	4Q/01	1Q/02	2Q/02	3Q/02	4Q/02	1Q/03	2Q/03	3Q/03
<b>Train 1</b>								
Planned unavailable hours	0.57	0	0	0.50	0	0.70	1.90	8.65
Unplanned unavailable hours	0	0	0	4.70	0	14.23	14.62	0
Fault exposure hours	0	0	0	0	0	0	0	0
Effective Reset hours	0	0	0	0	0	0	0	0
Required hours	2209.00	1983.82	2159.64	2208.00	2209.00	2160.00	2165.00	2208.00
<b>Train 2</b>								
Planned unavailable hours	0	0	0	0.88	0	7.35	0	0.60
Unplanned unavailable hours	0	0	0	0	0	0	0	0
Fault exposure hours	0	0	0	0	0	0	0	0
Effective Reset hours	0	0	0	0	0	0	0	0
Required hours	2209.00	1983.82	2159.64	2208.00	2209.00	2160.00	2165.00	2208.00
<b>Train 3</b>								
Planned unavailable hours	0	0	0	0	0	0	9.50	0.90
Unplanned unavailable hours	0	0	0	0	0	0	20.53	0
Fault exposure hours	0	0	0	0	0	0	0	0
Effective Reset hours	0	0	0	0	0	0	0	0
Required hours	2209.00	1983.82	2159.64	2208.00	2209.00	2160.00	2165.00	2208.00
<b>Train 4</b>								
Planned unavailable hours	0.58	0	0	0	0	0	14.47	0.40
Unplanned unavailable hours	0	0	0	6.58	1.93	2.82	5.97	0
Fault exposure hours	0	0	0	0	0	0	0	0
Effective Reset hours	0	0	0	0	0	0	0	0
Required hours	2209.00	1983.82	2159.64	2208.00	2209.00	2160.00	2165.00	2208.00

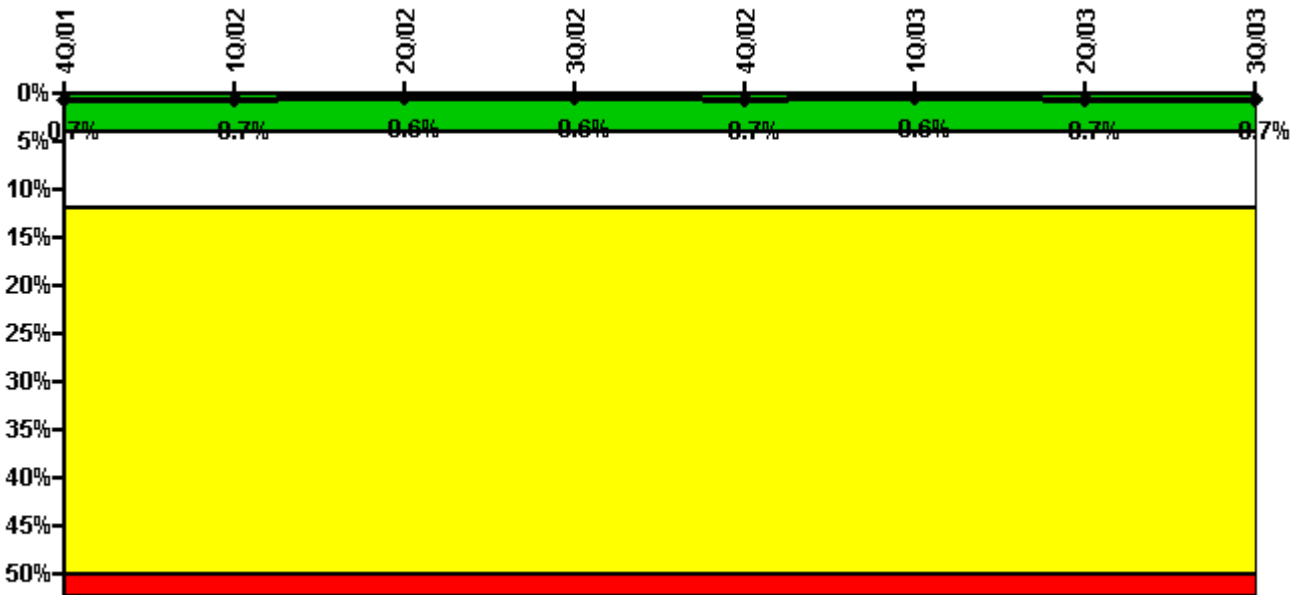
Indicator value	0.7%	0.7%	0.6%	0.1%	0.1%	0.1%	0.1%	0.1%

Licensee Comments:

3Q/03: Unavailability associated with the performance of the Undervoltage Relay Test, RT-2-092-32(1-4)-1, is currently under review for the historical data. All 3 months in this quarter have been updated to reflect any unavailability associated with performance of these tests during the quarter.

2Q/03: The original submittal did not take into account daylight savings time for the month of April when calculating hours train required to be available for service. No impact to unavailability on train or unit level. PI region and color unchanged. April of 2003 is the only affected month.

### Safety System Unavailability, High Pressure Injection System (HPCI)



Thresholds: White > 4.0% Yellow > 12.0% Red > 50.0%

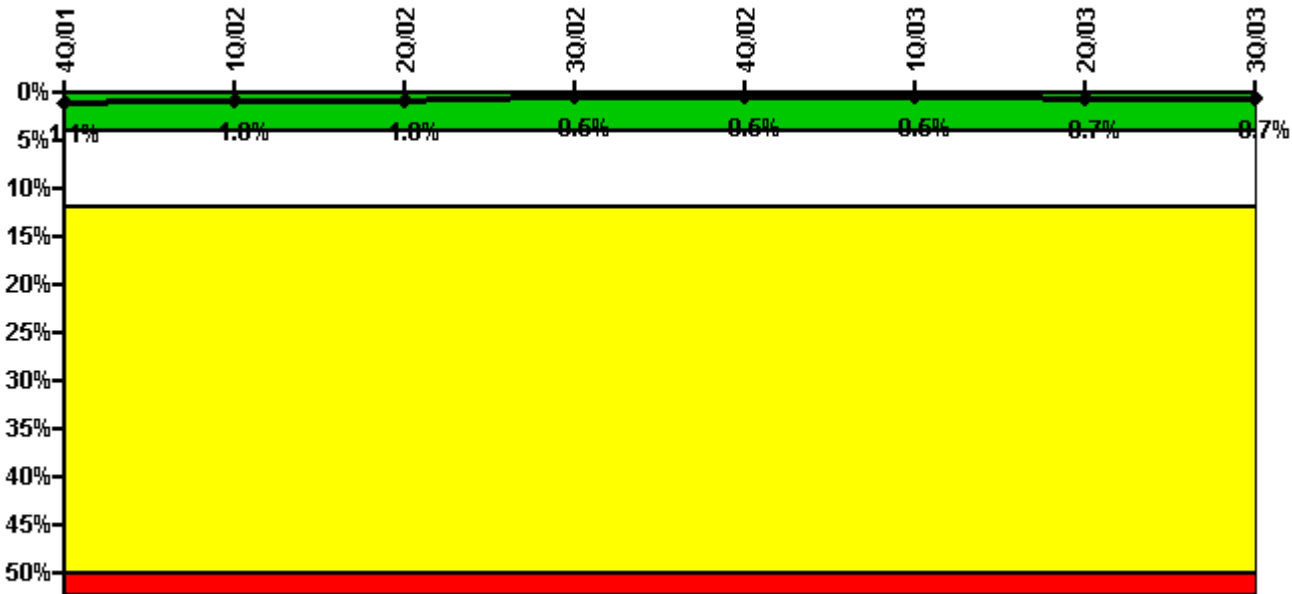
Notes

Safety System Unavailability, High Pressure Injection System (HPCI)	4Q/01	1Q/02	2Q/02	3Q/02	4Q/02	1Q/03	2Q/03	3Q/03
Train 1								
Planned unavailable hours	24.50	7.30	20.90	18.40	14.60	0.40	40.60	0
Unplanned unavailable hours	0	5.60	0	0	0	0	0	0
Fault exposure hours	0	0	0	0	0	0	0	0
Effective Reset hours	0	0	0	0	0	0	0	0
Required hours	2209.00	1797.50	2098.70	2208.00	2209.00	2160.00	2121.10	2208.00

Indicator value	0.7%	0.7%	0.6%	0.6%	0.7%	0.6%	0.7%	0.7%
-----------------	------	------	------	------	------	------	------	------

Licensee Comments: none

### Safety System Unavailability, Heat Removal System (RCIC)



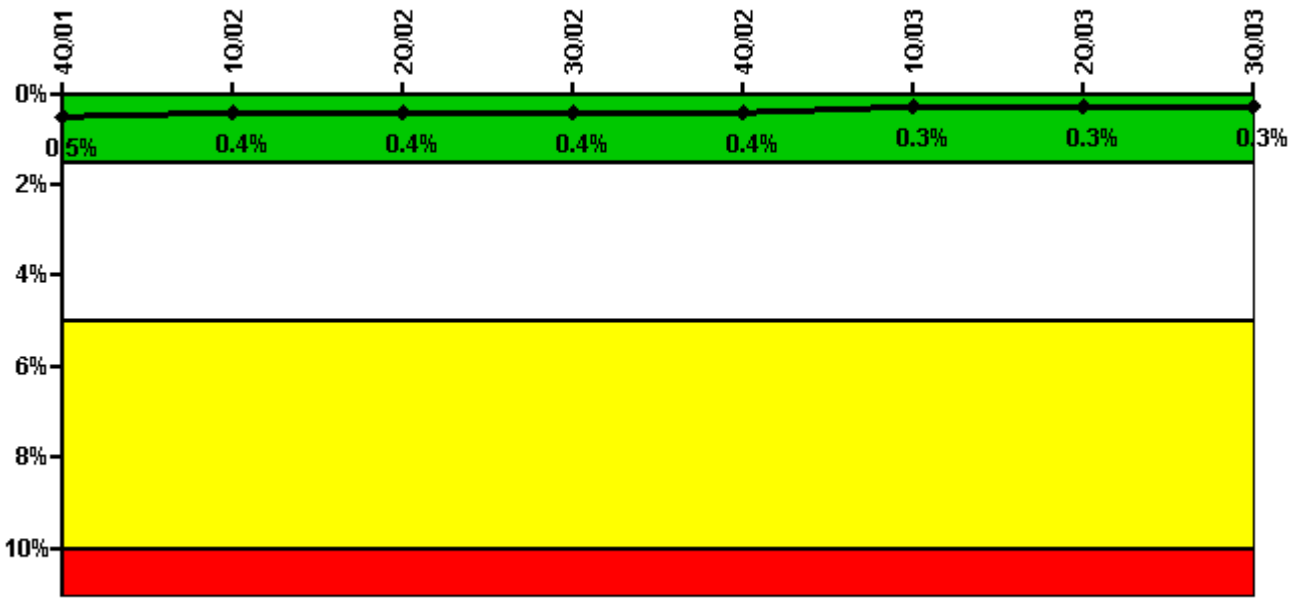
Thresholds: White > 4.0% Yellow > 12.0% Red > 50.0%

### Notes

Safety System Unavailability, Heat Removal System (RCIC)	4Q/01	1Q/02	2Q/02	3Q/02	4Q/02	1Q/03	2Q/03	3Q/03
Train 1								
Planned unavailable hours	7.70	2.60	23.70	2.60	6.30	3.00	63.70	1.10
Unplanned unavailable hours	0	0	0	0	0	0	0	23.50
Fault exposure hours	0	0	0	0	0	0	0	0
Effective Reset hours	0	0	0	0	0	0	0	0
Required hours	2209.00	1797.50	2098.70	2208.00	2209.00	2160.00	2121.10	2208.00
Indicator value	1.1%	1.0%	1.0%	0.5%	0.5%	0.5%	0.7%	0.7%

Licensee Comments: none

### Safety System Unavailability, Residual Heat Removal System



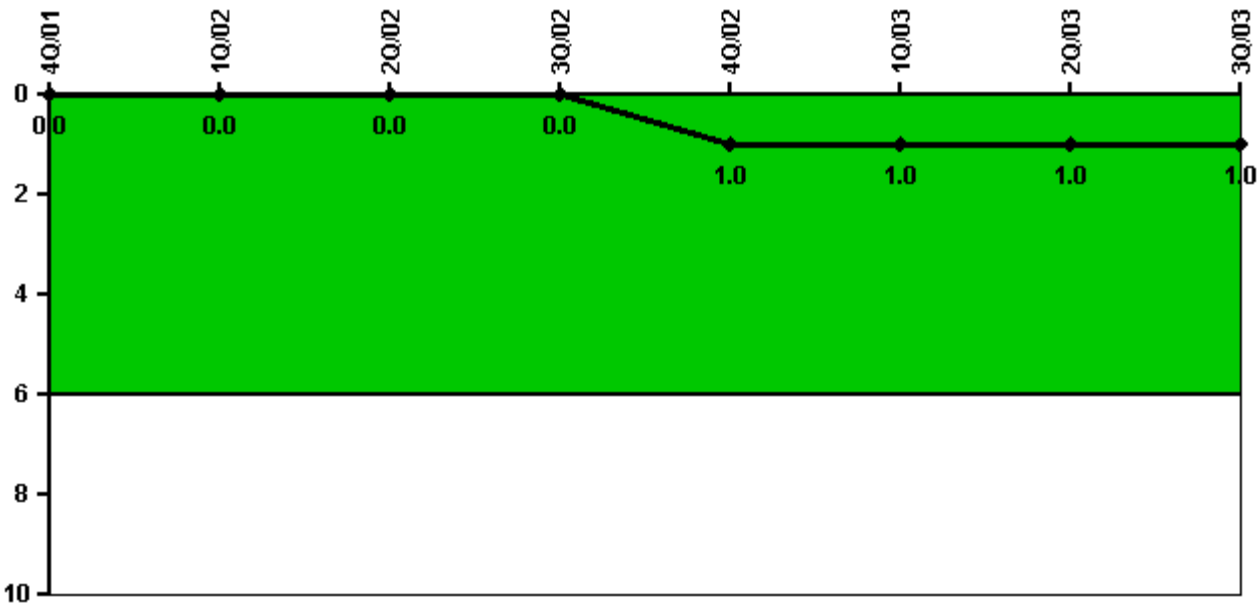
Thresholds: White > 1.5% Yellow > 5.0% Red > 10.0%

**Notes**

Safety System Unavailability, Residual Heat Removal System	4Q/01	1Q/02	2Q/02	3Q/02	4Q/02	1Q/03	2Q/03	3Q/03
<b>Train 1</b>								
Planned unavailable hours	0	17.70	1.22	2.53	0	13.63	0	0
Unplanned unavailable hours	0	0	0	0	0	0	0	0
Fault exposure hours	0	0	0	0	0	0	0	0
Effective Reset hours	0	0	0	0	0	0	0	0
Required hours	2209.00	2160.00	2183.00	2208.00	2209.00	2160.00	2183.00	2208.00
<b>Train 2</b>								
Planned unavailable hours	19.67	0.38	0	0	24.28	16.00	0	0
Unplanned unavailable hours	0	0	0	0	0	0	0	0
Fault exposure hours	0	0	0	0	0	0	0	0
Effective Reset hours	0	0	0	0	0	0	0	0
Required hours	2209.00	2160.00	2183.00	2208.00	2209.00	2160.00	2183.00	2208.00
<b>Indicator value</b>	<b>0.5%</b>	<b>0.4%</b>	<b>0.4%</b>	<b>0.4%</b>	<b>0.4%</b>	<b>0.3%</b>	<b>0.3%</b>	<b>0.3%</b>

Licensee Comments: none

### Safety System Functional Failures (BWR)



Thresholds: White > 6.0

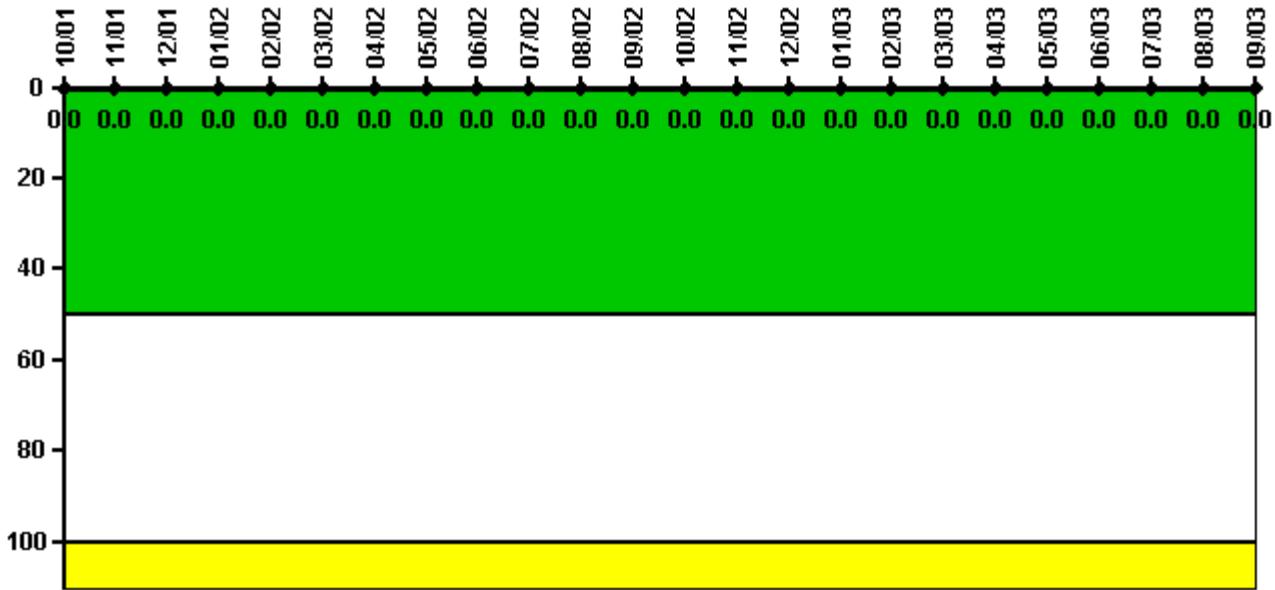
#### Notes

Safety System Functional Failures (BWR)	4Q/01	1Q/02	2Q/02	3Q/02	4Q/02	1Q/03	2Q/03	3Q/03
Safety System Functional Failures	0	0	0	0	1	0	0	0
Indicator value	0	0	0	0	1	1	1	1

Licensee Comments: none



### Reactor Coolant System Activity



Thresholds: White > 50.0 Yellow > 100.0

#### Notes

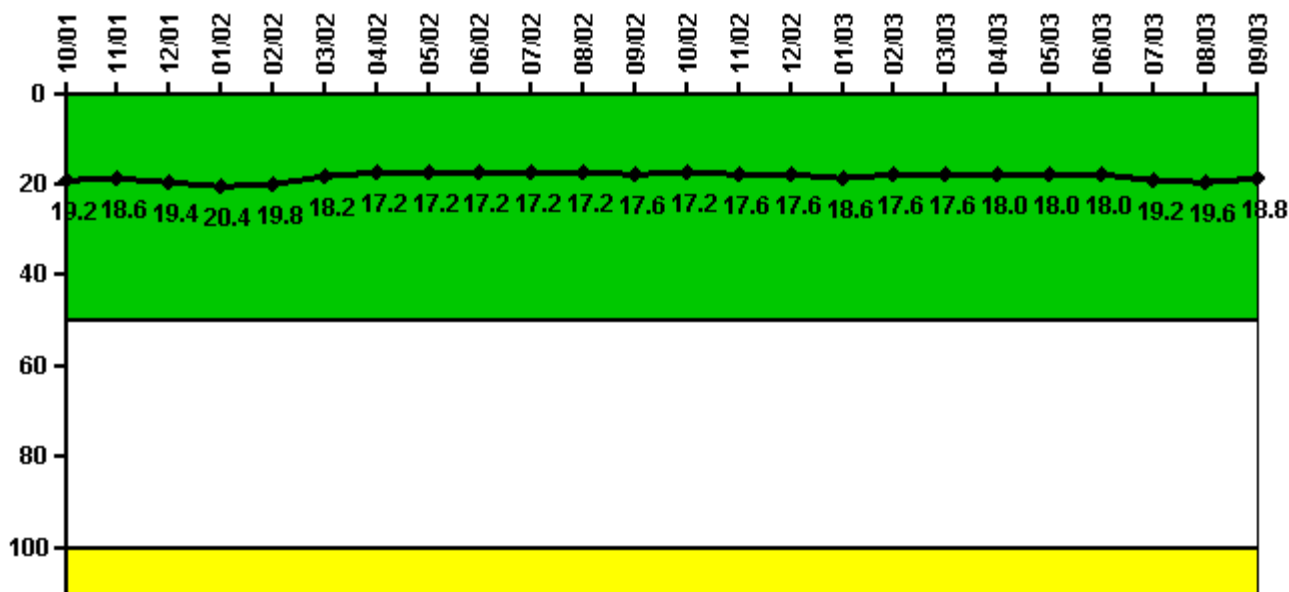
Reactor Coolant System Activity	10/01	11/01	12/01	1/02	2/02	3/02	4/02	5/02	6/02	7/02	8/02	9/02
Maximum activity	0.000022	0.000043	0.000045	0.000035	0.000032	0.000014	0.000022	0.000017	0.000014	0.000006	0.000007	0.000008
Technical specification limit	0.2	0.2	0.2	0.2	0.2	0.2	0.2	0.2	0.2	0.2	0.2	0.2
Indicator value	0	0	0	0	0	0	0	0	0	0	0	0

Reactor Coolant System Activity	10/02	11/02	12/02	1/03	2/03	3/03	4/03	5/03	6/03	7/03	8/03	9/03
Maximum activity	0.000007	0.000014	0.000009	0.000015	0.000009	0.000010	0.000008	0.000012	0.000009	0.000016	0.000025	0.000021
Technical specification limit	0.2	0.2	0.2	0.2	0.2	0.2	0.2	0.2	0.2	0.2	0.2	0.2
Indicator value	0	0	0	0	0	0	0	0	0	0	0	0

Licensee Comments: none

### Reactor Coolant System Leakage



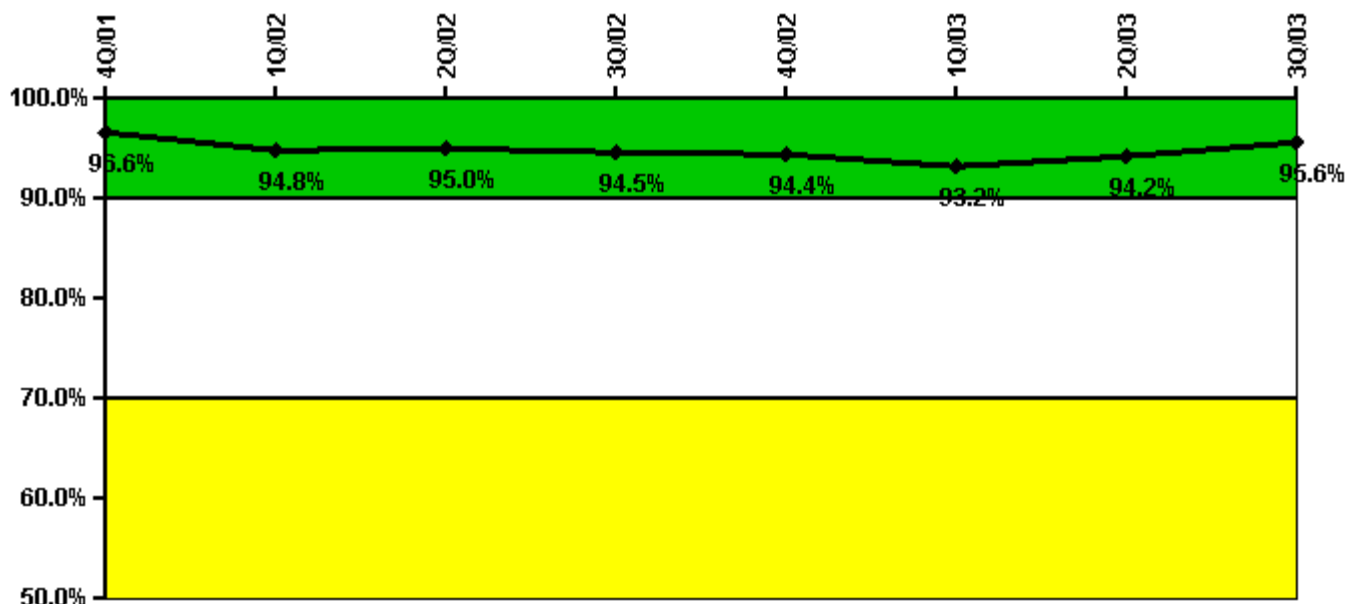
Thresholds: White > 50.0 Yellow > 100.0

#### Notes

Reactor Coolant System Leakage	10/01	11/01	12/01	1/02	2/02	3/02	4/02	5/02	6/02	7/02	8/02	9/02
Maximum leakage	4.810	4.660	4.860	5.110	4.960	4.560	4.300	4.300	4.300	4.300	4.300	4.400
Technical specification limit	25.0	25.0	25.0	25.0	25.0	25.0	25.0	25.0	25.0	25.0	25.0	25.0
Indicator value	19.2	18.6	19.4	20.4	19.8	18.2	17.2	17.2	17.2	17.2	17.2	17.6
Reactor Coolant System Leakage	10/02	11/02	12/02	1/03	2/03	3/03	4/03	5/03	6/03	7/03	8/03	9/03
Maximum leakage	4.300	4.400	4.400	4.650	4.400	4.400	4.500	4.500	4.500	4.800	4.900	4.700
Technical specification limit	25.0	25.0	25.0	25.0	25.0	25.0	25.0	25.0	25.0	25.0	25.0	25.0
Indicator value	17.2	17.6	17.6	18.6	17.6	17.6	18.0	18.0	18.0	19.2	19.6	18.8

Licensee Comments: none

### Drill/Exercise Performance



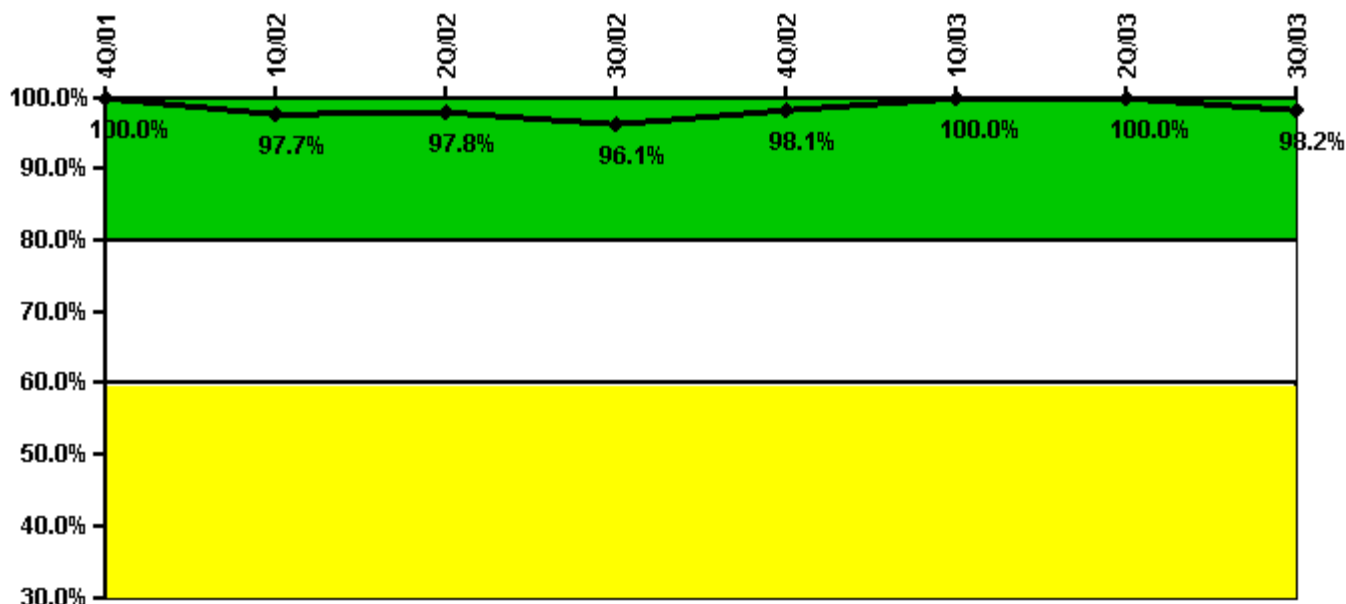
Thresholds: White < 90.0% Yellow < 70.0%

#### Notes

Drill/Exercise Performance	4Q/01	1Q/02	2Q/02	3Q/02	4Q/02	1Q/03	2Q/03	3Q/03
Successful opportunities	6.0	16.0	32.0	5.0	15.0	11.0	36.0	8.0
Total opportunities	6.0	16.0	34.0	6.0	15.0	12.0	38.0	8.0
Indicator value	96.6%	94.8%	95.0%	94.5%	94.4%	93.2%	94.2%	95.6%

Licensee Comments: none

### ERO Drill Participation



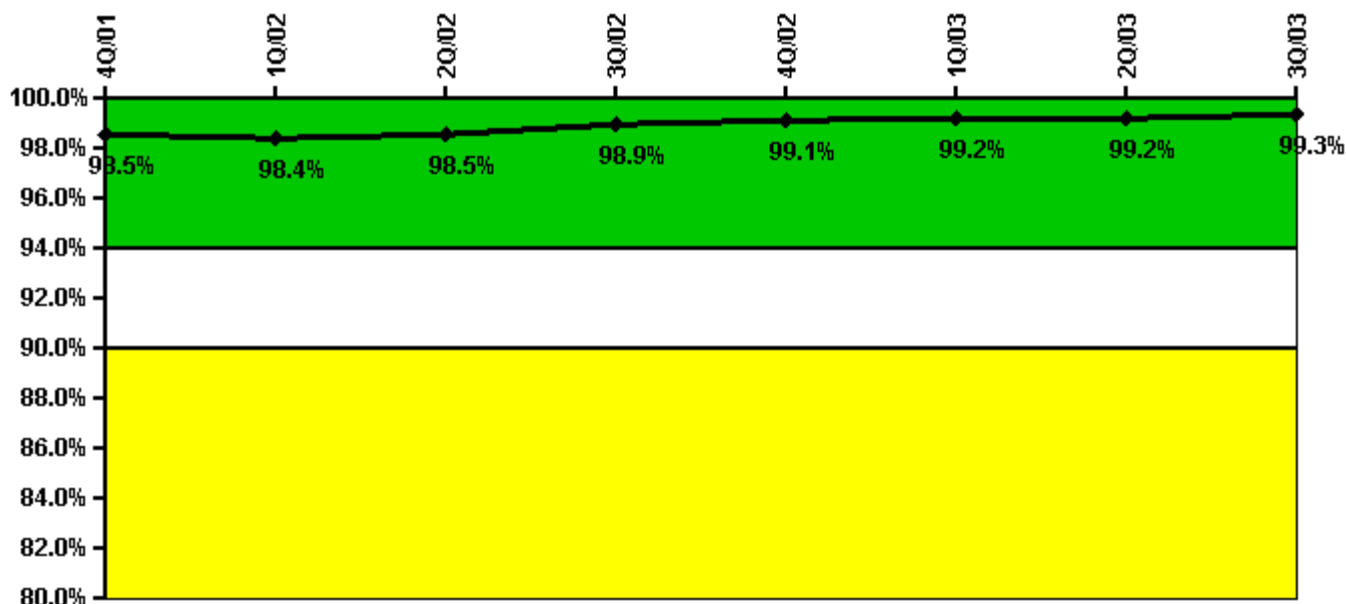
Thresholds: White < 80.0% Yellow < 60.0%

#### Notes

ERO Drill Participation	4Q/01	1Q/02	2Q/02	3Q/02	4Q/02	1Q/03	2Q/03	3Q/03
Participating Key personnel	45.0	43.0	44.0	49.0	52.0	53.0	54.0	55.0
Total Key personnel	45.0	44.0	45.0	51.0	53.0	53.0	54.0	56.0
Indicator value	100.0%	97.7%	97.8%	96.1%	98.1%	100.0%	100.0%	98.2%

Licensee Comments: none

### Alert & Notification System



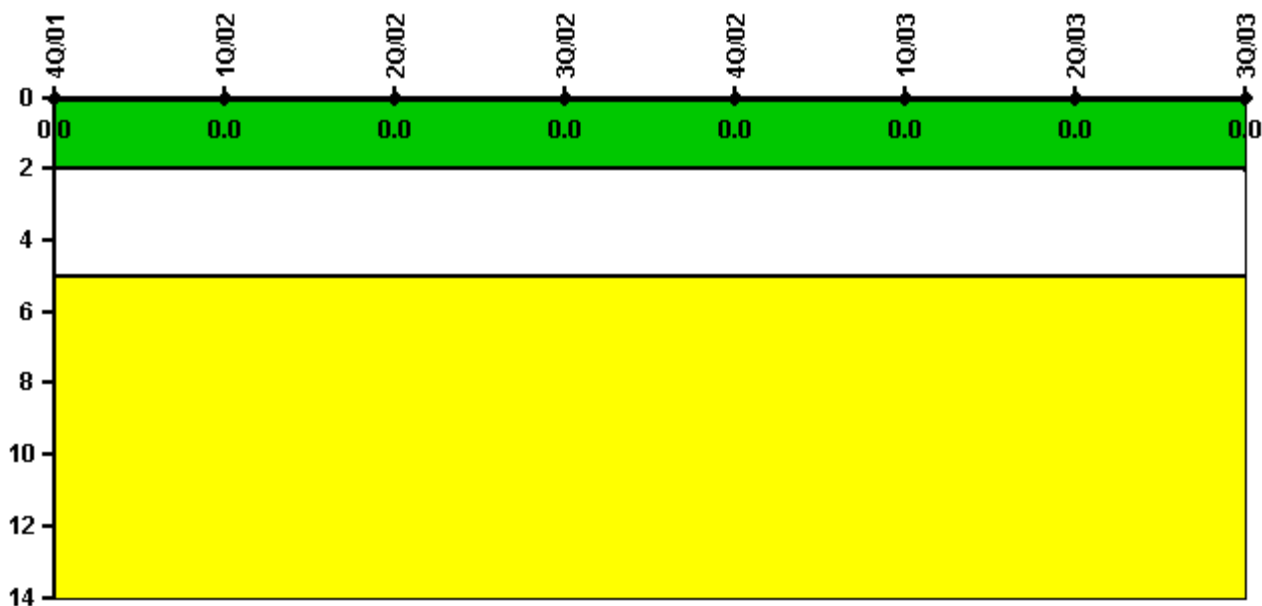
Thresholds: White < 94.0% Yellow < 90.0%

#### Notes

Alert & Notification System	4Q/01	1Q/02	2Q/02	3Q/02	4Q/02	1Q/03	2Q/03	3Q/03
Successful siren-tests	2119	2122	2124	2121	2298	2133	2126	2129
Total sirens-tests	2145	2145	2145	2145	2310	2145	2145	2145
Indicator value	98.5%	98.4%	98.5%	98.9%	99.1%	99.2%	99.2%	99.3%

Licensee Comments: none

### Occupational Exposure Control Effectiveness



Thresholds: White > 2.0 Yellow > 5.0

#### Notes

Occupational Exposure Control Effectiveness	4Q/01	1Q/02	2Q/02	3Q/02	4Q/02	1Q/03	2Q/03	3Q/03
High radiation area occurrences	0	0	0	0	0	0	0	0
Very high radiation area occurrences	0	0	0	0	0	0	0	0
Unintended exposure occurrences	0	0	0	0	0	0	0	0
Indicator value	0	0	0	0	0	0	0	0

Licensee Comments: none

### RETS/ODCM Radiological Effluent



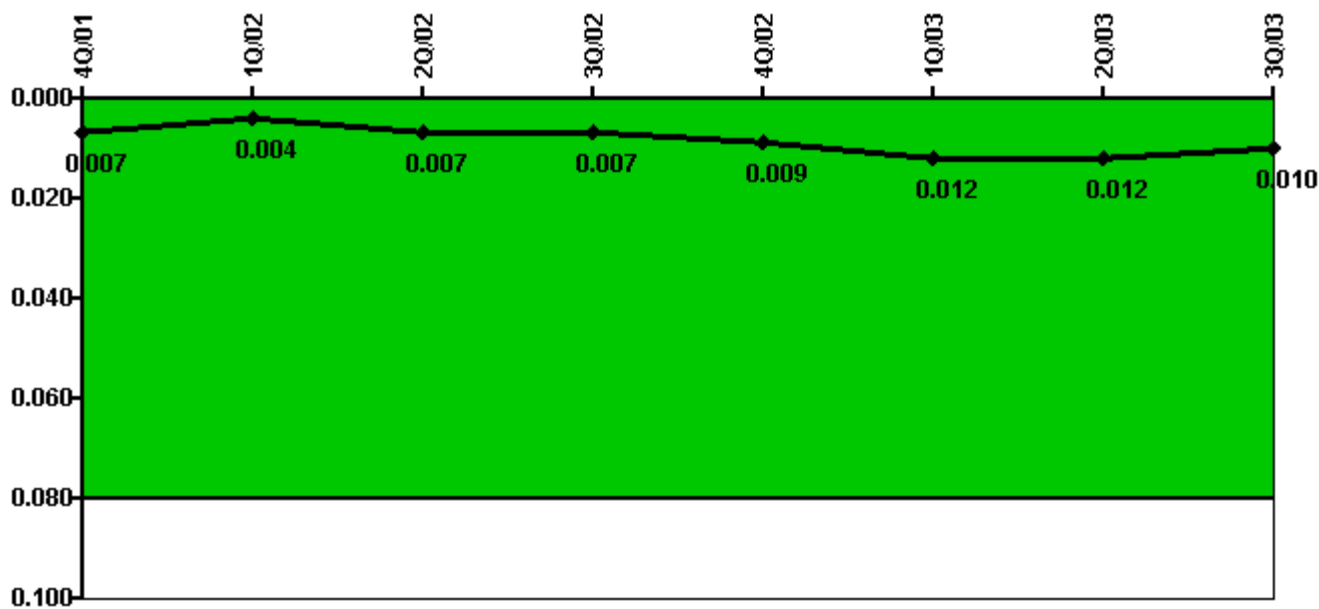
Thresholds: White > 1.0 Yellow > 3.0

#### Notes

RETS/ODCM Radiological Effluent	4Q/01	1Q/02	2Q/02	3Q/02	4Q/02	1Q/03	2Q/03	3Q/03
RETS/ODCM occurrences	0	0	0	0	0	0	0	0
Indicator value	0	0	0	0	0	0	0	0

Licensee Comments: none

### Protected Area Security Performance Index



Thresholds: White > 0.080

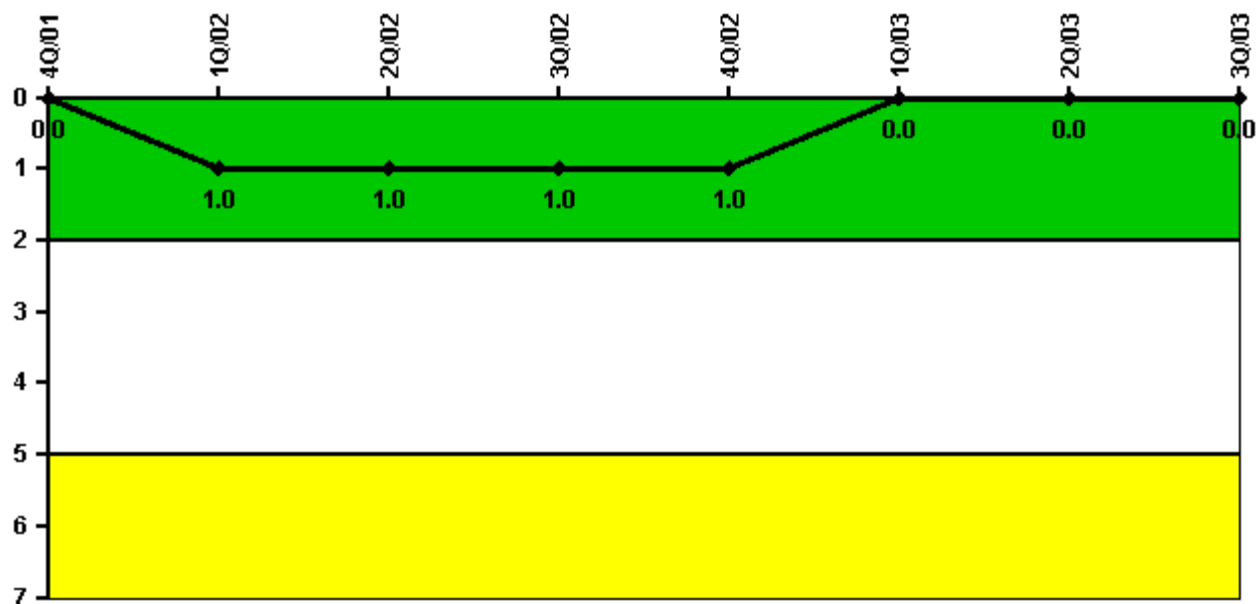
#### Notes

Protected Area Security Performance Index	4Q/01	1Q/02	2Q/02	3Q/02	4Q/02	1Q/03	2Q/03	3Q/03
IDS compensatory hours	13.80	36.60	92.60	64.70	60.90	129.50	52.10	5.90
CCTV compensatory hours	8.8	9.6	13.1	0	26.4	41.5	15.7	0.9
IDS normalization factor	2.35	2.35	2.35	2.35	2.35	2.35	2.35	2.35
CCTV normalization factor	1.2	1.2	1.2	1.2	1.2	1.2	1.2	1.2
Index Value	0.007	0.004	0.007	0.007	0.009	0.012	0.012	0.010

Licensee Comments: none



### Personnel Screening Program



Thresholds: White > 2.0 Yellow > 5.0

#### Notes

Personnel Screening Program	4Q/01	1Q/02	2Q/02	3Q/02	4Q/02	1Q/03	2Q/03	3Q/03
Program failures	0	1	0	0	0	0	0	0
Indicator value	0	1	1	1	1	0	0	0

Licensee Comments: none

### FFD/Personnel Reliability



Thresholds: White > 2.0 Yellow > 5.0

#### Notes

FFD/Personnel Reliability	4Q/01	1Q/02	2Q/02	3Q/02	4Q/02	1Q/03	2Q/03	3Q/03
Program Failures	0	0	0	0	0	0	0	0
Indicator value	0	0	0	0	0	0	0	0

Licensee Comments: none

▲ [PI Summary](#) | [Inspection Findings Summary](#) | [Reactor Oversight Process](#)

Last Modified: October 22, 2003