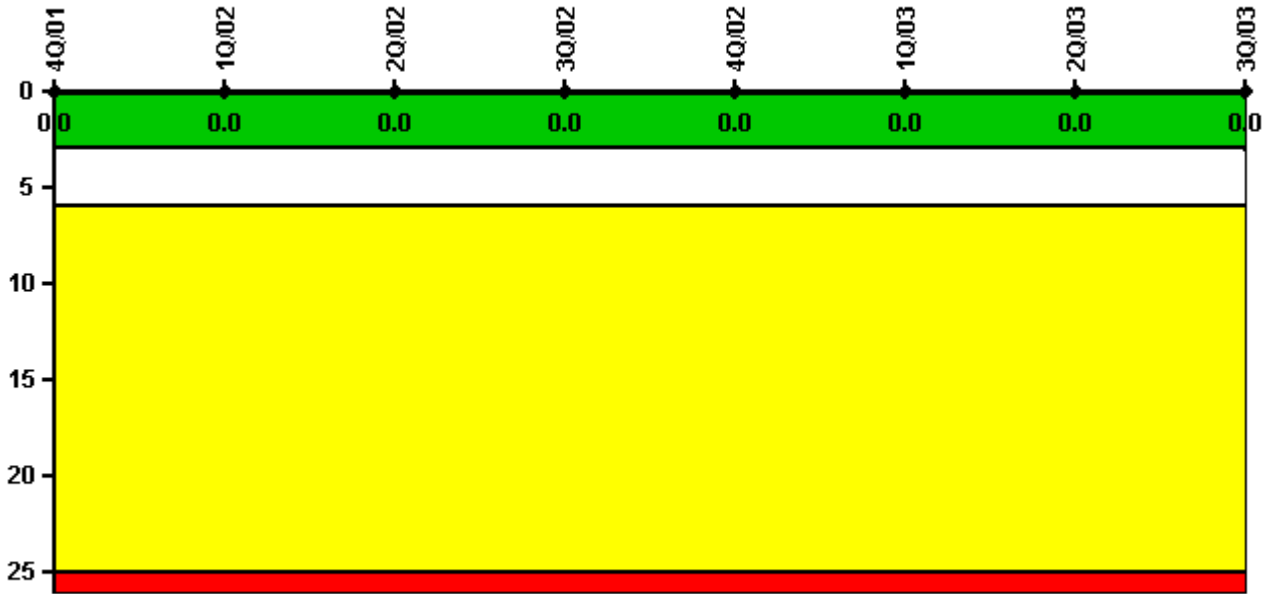


Braidwood 1

3Q/2003 Performance Indicators

Licensee's General Comments: none

Unplanned Scrams per 7000 Critical Hrs



Thresholds: White > 3.0 Yellow > 6.0 Red > 25.0

Notes

Unplanned Scrams per 7000 Critical Hrs	4Q/01	1Q/02	2Q/02	3Q/02	4Q/02	1Q/03	2Q/03	3Q/03
Unplanned scrams	0	0	0	0	0	0	0	0
Critical hours	1952.7	2160.0	2183.0	2208.0	2209.0	2160.0	1786.1	2208.0
Indicator value	0	0	0	0	0	0	0	0

Licensee Comments: none

Scrams with Loss of Normal Heat Removal



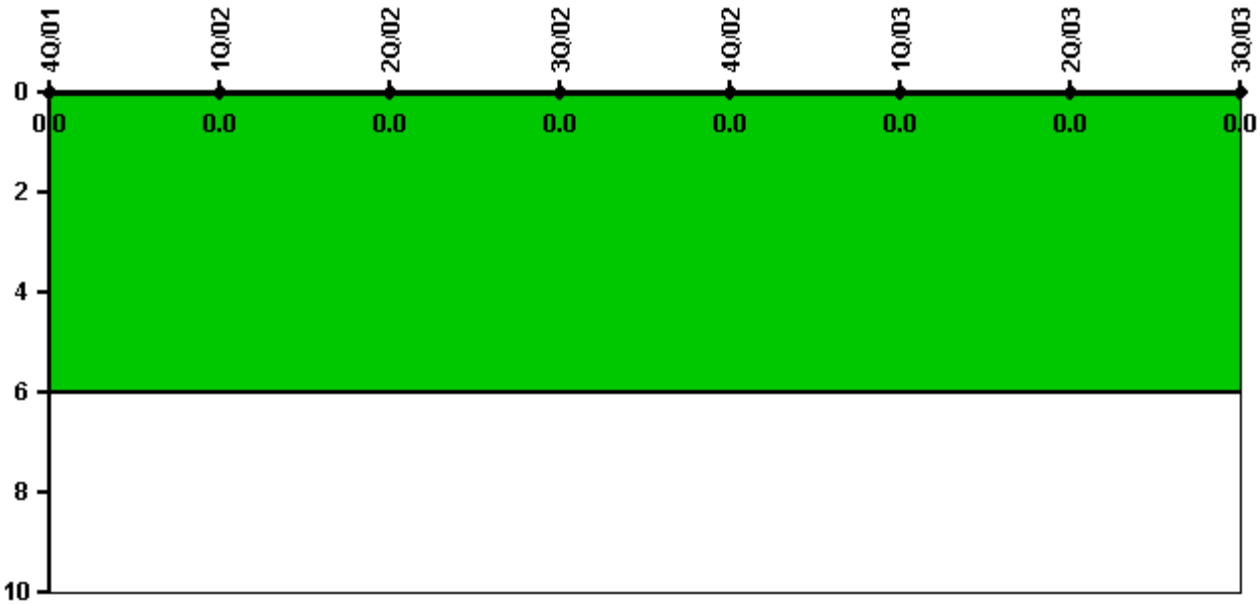
Thresholds: White > 2.0 Yellow > 10.0 Red > 20.0

Notes

Scrams with Loss of Normal Heat Removal	4Q/01	1Q/02	2Q/02	3Q/02	4Q/02	1Q/03	2Q/03	3Q/03
Scrams	0	0	0	0	0	0	0	0
Indicator value	0	0	0	0	0	0	0	0

Licensee Comments: none

Unplanned Power Changes per 7000 Critical Hrs



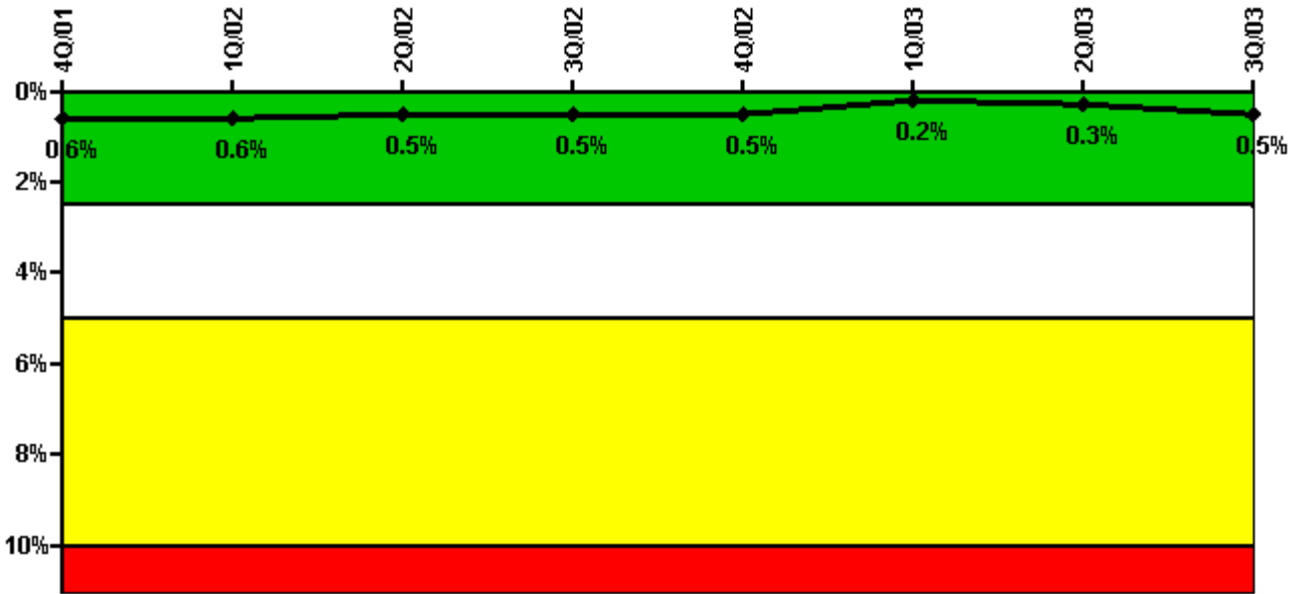
Thresholds: White > 6.0

Notes

Unplanned Power Changes per 7000 Critical Hrs	4Q/01	1Q/02	2Q/02	3Q/02	4Q/02	1Q/03	2Q/03	3Q/03
Unplanned power changes	0	0	0	0	0	0	0	0
Critical hours	1952.7	2160.0	2183.0	2208.0	2209.0	2160.0	1786.1	2208.0
Indicator value	0	0	0	0	0	0	0	0

Licensee Comments: none

Safety System Unavailability, Emergency AC Power



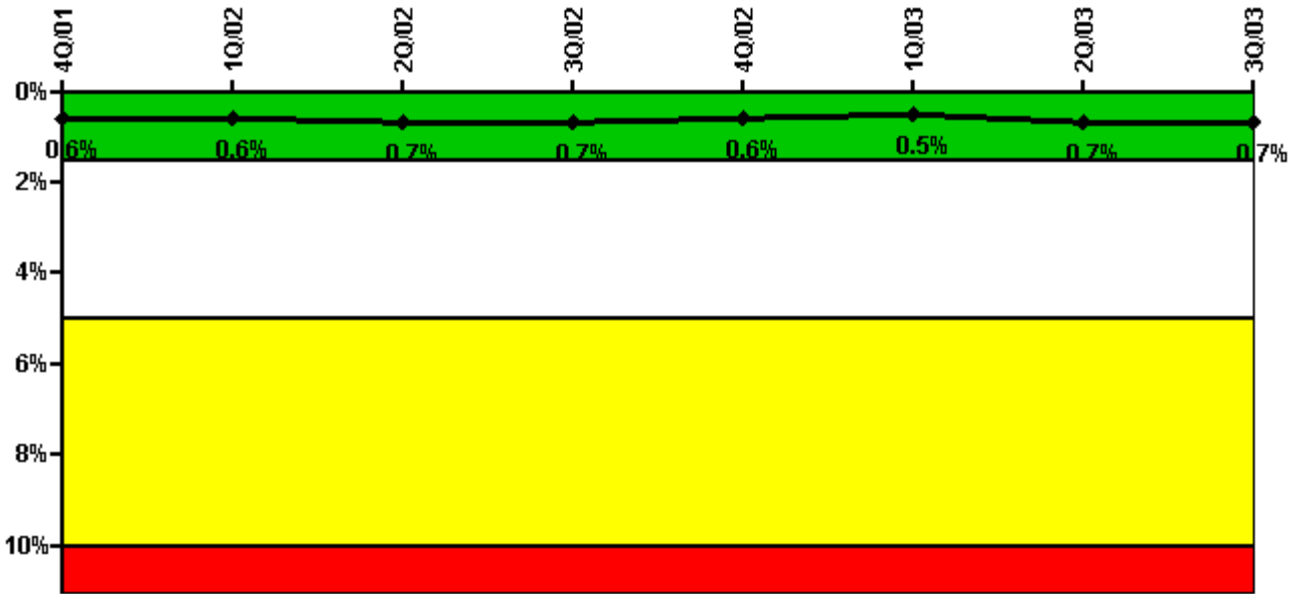
Thresholds: White > 2.5% Yellow > 5.0% Red > 10.0%

Notes

Safety System Unavailability, Emergency AC Power	4Q/01	1Q/02	2Q/02	3Q/02	4Q/02	1Q/03	2Q/03	3Q/03
Train 1								
Planned unavailable hours	5.60	1.10	5.30	1.30	2.80	6.60	1.50	94.80
Unplanned unavailable hours	0	0	0	0	0	0	0	9.45
Fault exposure hours	0	0	0	0	0	0	0	0
Effective Reset hours	0	0	0	0	0	0	0	0
Required hours	2209.00	2160.00	2183.00	2208.00	2209.00	2160.00	2183.00	2208.00
Train 2								
Planned unavailable hours	2.00	1.40	1.30	2.80	1.70	6.10	103.30	2.60
Unplanned unavailable hours	0	0	0	0	0	0.30	0	0
Fault exposure hours	0	0	0	0	0	0	0	0
Effective Reset hours	0	0	0	0	0	0	0	0
Required hours	2209.00	2160.00	2183.00	2208.00	2209.00	2160.00	2183.00	2208.00
Indicator value	0.6%	0.6%	0.5%	0.5%	0.5%	0.2%	0.3%	0.5%

Licensee Comments: none

Safety System Unavailability, High Pressure Injection System (HPSI)



Thresholds: White > 1.5% Yellow > 5.0% Red > 10.0%

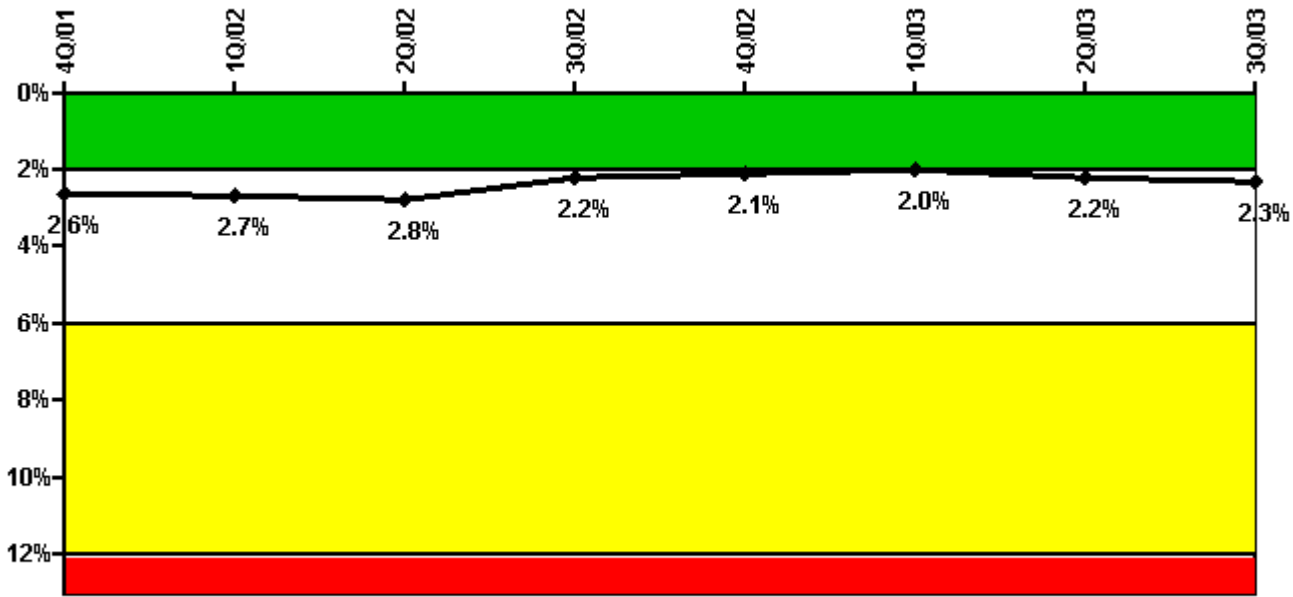
Notes

Safety System Unavailability, High Pressure Injection System (HPSI)	4Q/01	1Q/02	2Q/02	3Q/02	4Q/02	1Q/03	2Q/03	3Q/03
Train 1								
Planned unavailable hours	2.80	1.20	5.80	1.30	2.90	51.30	1.90	2.90
Unplanned unavailable hours	0	0	0	0	0	0	0	0
Fault exposure hours	0	0	0	0	0	0	0	0
Effective Reset hours	0	0	0	0	0	0	0	0
Required hours	1952.70	2160.00	2183.00	2208.00	2209.00	2160.00	1786.10	2208.00
Train 2								
Planned unavailable hours	2.50	1.40	1.60	12.20	9.70	3.70	89.20	20.10
Unplanned unavailable hours	0	0	0	0	0	0	27.70	0
Fault exposure hours	0	0	0	0	0	0	0	0
Effective Reset hours	0	0	0	0	0	0	0	0
Required hours	1952.70	2160.00	2183.00	2208.00	2209.00	2160.00	1786.10	2208.00
Train 3								
Planned unavailable hours	2.50	1.10	17.00	1.30	2.80	56.50	43.00	2.80
Unplanned unavailable hours	0	0	0	0	0	0	0	0
Fault exposure hours	0	0	0	0	0	0	0	0
Effective Reset hours	0	0	0	0	0	0	0	0
Required hours	1952.70	2160.00	2183.00	2208.00	2209.00	2160.00	1786.10	2208.00
Train 4								
Planned unavailable hours	2.20	1.50	1.40	2.80	74.40	9.80	0.10	2.80
Unplanned unavailable hours	0	0	0	0	0	1.00	0	0.20
Fault exposure hours	0	0	0	0	0	0	0	0
Effective Reset hours	0	0	0	0	0	0	0	0

Required hours	1952.70	2160.00	2183.00	2208.00	2209.00	2160.00	1786.10	2208.00
Indicator value	0.6%	0.6%	0.7%	0.7%	0.6%	0.5%	0.7%	0.7%

Licensee Comments: none

Safety System Unavailability, Heat Removal System (AFW)



Thresholds: White > 2.0% Yellow > 6.0% Red > 12.0%

Notes

Safety System Unavailability, Heat Removal System (AFW)	4Q/01	1Q/02	2Q/02	3Q/02	4Q/02	1Q/03	2Q/03	3Q/03
Train 1								
Planned unavailable hours	5.90	6.30	10.20	6.40	12.50	9.40	5.90	8.17
Unplanned unavailable hours	0	0	0	0	0	0	0	0
Fault exposure hours	0	0	0	0	0	0	0	0
Effective Reset hours	0	0	0	0	0	0	0	0
Required hours	1952.70	2160.00	2183.00	2208.00	2209.00	2160.00	1786.10	2208.00
Train 2								
Planned unavailable hours	8.50	11.50	21.80	41.60	18.50	13.80	4.50	18.67
Unplanned unavailable hours	0	68.60	0	0	0	0	22.60	0
Fault exposure hours	335.80	0	0	0	0	0	54.40	64.20
Effective Reset hours	0	0	0	0	0	0	0	0
Required hours	1952.70	2160.00	2183.00	2208.00	2209.00	2160.00	1786.10	2208.00

Indicator value	2.6%	2.7%	2.8%	2.2%	2.1%	2.0%	2.2%	2.3%
-----------------	------	------	------	------	------	------	------	------

Licensee Comments:

2Q/03: The fault exposure hours for May were revised due to performing a more accurate determination of unavailability time.

2Q/03: The fault exposure hours for May were revised due to performing a more accurate determination of unavailability time.

2Q/01: The 1B AF pump unavailability data has been revised after discovering a reporting error that occurred for the 2nd quarter, 2001.

2Q/01: The 1B AF pump unavailability data has been revised after discovering a reporting error that occurred for the 2nd quarter, 2001.

Safety System Unavailability, Residual Heat Removal System



Thresholds: White > 1.5% Yellow > 5.0% Red > 10.0%

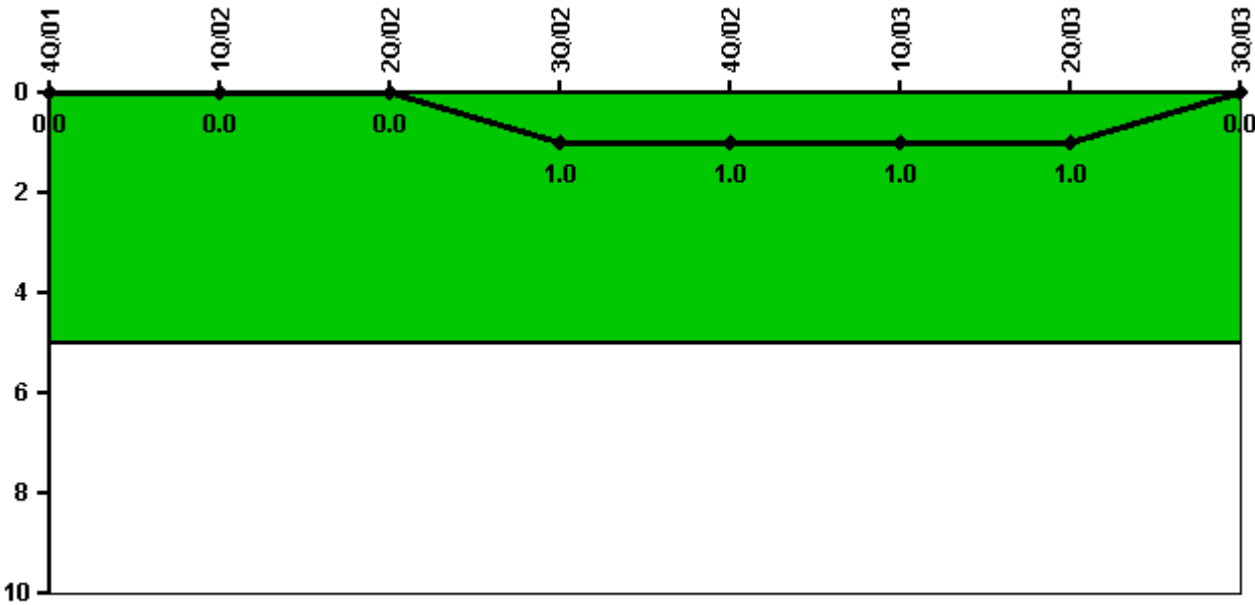
Notes

Safety System Unavailability, Residual Heat Removal System	4Q/01	1Q/02	2Q/02	3Q/02	4Q/02	1Q/03	2Q/03	3Q/03
Train 1								
Planned unavailable hours	3.10	2.20	6.30	1.70	38.81	6.90	116.50	4.30
Unplanned unavailable hours	0	0	0	0	0	0	0	0
Fault exposure hours	0	0	0	0	0	0	0	0

Effective Reset hours	0	0	0	0	0	0	0	0
Required hours	2209.00	2160.00	2183.00	2208.00	2209.00	2160.00	2183.00	2208.00
Train 2								
Planned unavailable hours	2.10	1.80	1.80	3.00	14.80	176.90	0	4.80
Unplanned unavailable hours	0	0	0	0	0	0	0	0
Fault exposure hours	0	0	0	0	0	0	0	0
Effective Reset hours	0	0	0	0	0	0	0	0
Required hours	2209.00	2160.00	2183.00	2208.00	2209.00	2160.00	2183.00	2208.00
Indicator value	0.6%	0.6%	0.6%	0.6%	0.7%	0.8%	1.0%	1.0%

Licensee Comments: none

Safety System Functional Failures (PWR)



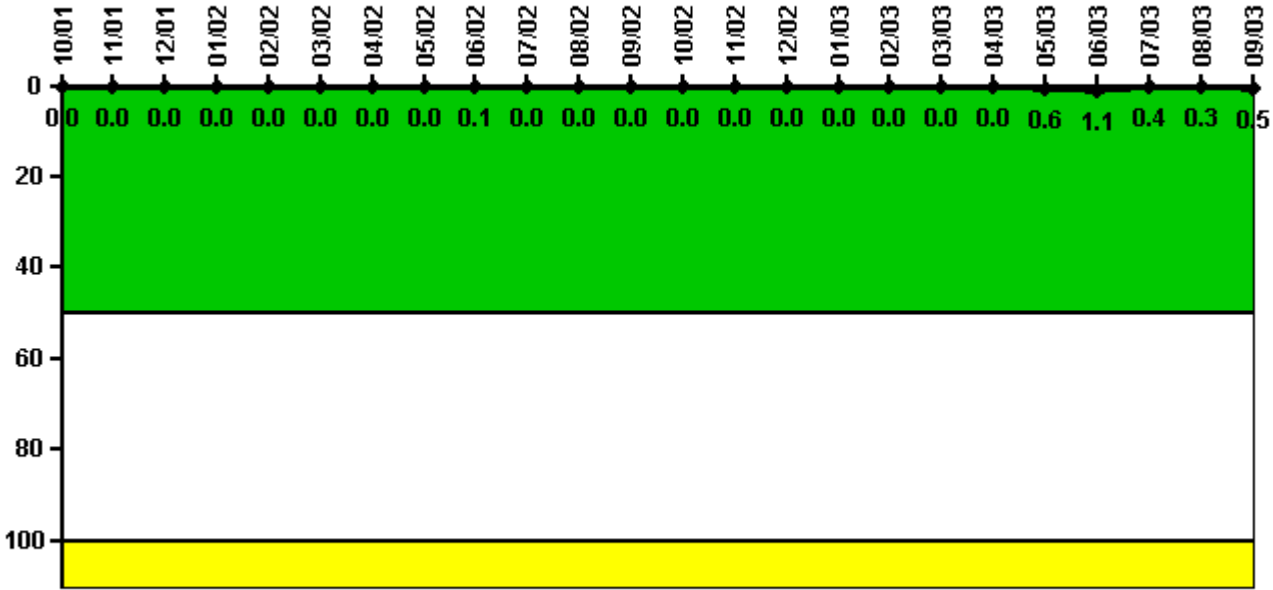
Thresholds: White > 5.0

Notes

Safety System Functional Failures (PWR)	4Q/01	1Q/02	2Q/02	3Q/02	4Q/02	1Q/03	2Q/03	3Q/03
Safety System Functional Failures	0	0	0	1	0	0	0	0
Indicator value	0	0	0	1	1	1	1	0

Licensee Comments: none

Reactor Coolant System Activity



Thresholds: White > 50.0 Yellow > 100.0

Notes

Reactor Coolant System Activity	10/01	11/01	12/01	1/02	2/02	3/02	4/02	5/02	6/02	7/02	8/02	9/02
Maximum activity	0.000193	0.000193	0.000196	0.000205	0.000226	0.000237	0.000245	0.000255	0.000538	0.000257	0.000284	0.000282
Technical specification limit	1.0	1.0	1.0	1.0	1.0	1.0	1.0	1.0	1.0	1.0	1.0	1.0
Indicator value	0	0	0	0	0	0	0	0	0.1	0	0	0

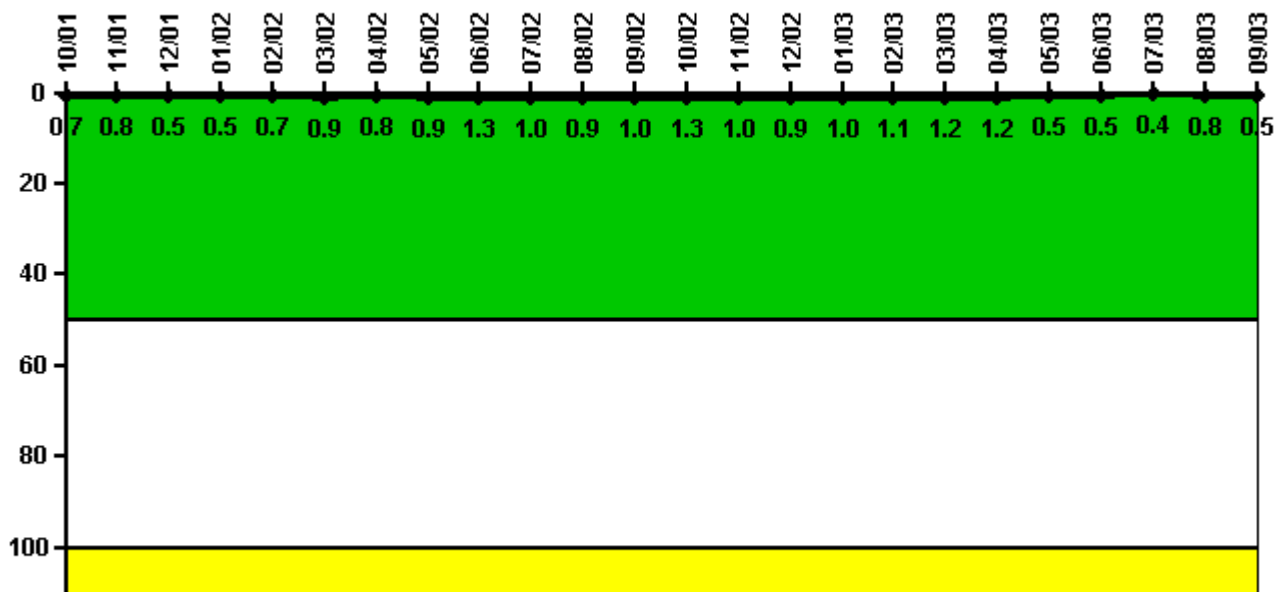
Reactor Coolant System Activity	10/02	11/02	12/02	1/03	2/03	3/03	4/03	5/03	6/03	7/03	8/03	9/03
Maximum activity	0.000296	0.000286	0.000297	0.000310	0.000315	0.000317	0.000312	0.005660	0.011300	0.003620	0.002750	0.004690
Technical specification limit	1.0	1.0	1.0	1.0	1.0	1.0	1.0	1.0	1.0	1.0	1.0	1.0
Indicator value	0	0	0	0	0	0	0	0.6	1.1	0.4	0.3	0.5

Licensee Comments:

12/02: June and November 2002, May and June 2003, data revised due to errors discovered in previously reported data. Indicator color is unchanged and remains green.

12/02: June and November 2002, May and June 2003, data revised due to errors discovered in previously reported data. Indicator color is unchanged and remains green.

Reactor Coolant System Leakage



Thresholds: White > 50.0 Yellow > 100.0

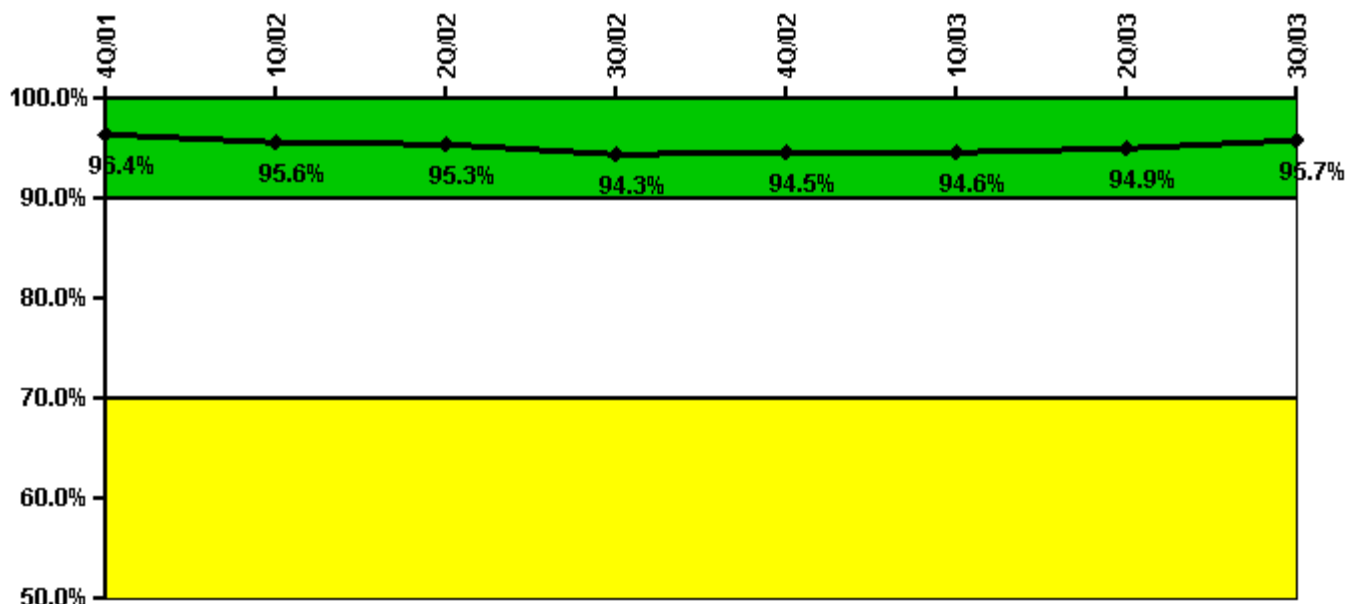
Notes

Reactor Coolant System Leakage	10/01	11/01	12/01	1/02	2/02	3/02	4/02	5/02	6/02	7/02	8/02	9/02
Maximum leakage	0.072	0.079	0.051	0.052	0.071	0.085	0.083	0.092	0.133	0.096	0.093	0.099
Technical specification limit	10.0	10.0	10.0	10.0	10.0	10.0	10.0	10.0	10.0	10.0	10.0	10.0
Indicator value	0.7	0.8	0.5	0.5	0.7	0.9	0.8	0.9	1.3	1.0	0.9	1.0

Reactor Coolant System Leakage	10/02	11/02	12/02	1/03	2/03	3/03	4/03	5/03	6/03	7/03	8/03	9/03
Maximum leakage	0.129	0.103	0.094	0.096	0.109	0.115	0.118	0.049	0.054	0.044	0.080	0.049
Technical specification limit	10.0	10.0	10.0	10.0	10.0	10.0	10.0	10.0	10.0	10.0	10.0	10.0
Indicator value	1.3	1.0	0.9	1.0	1.1	1.2	1.2	0.5	0.5	0.4	0.8	0.5

Licensee Comments: none

Drill/Exercise Performance



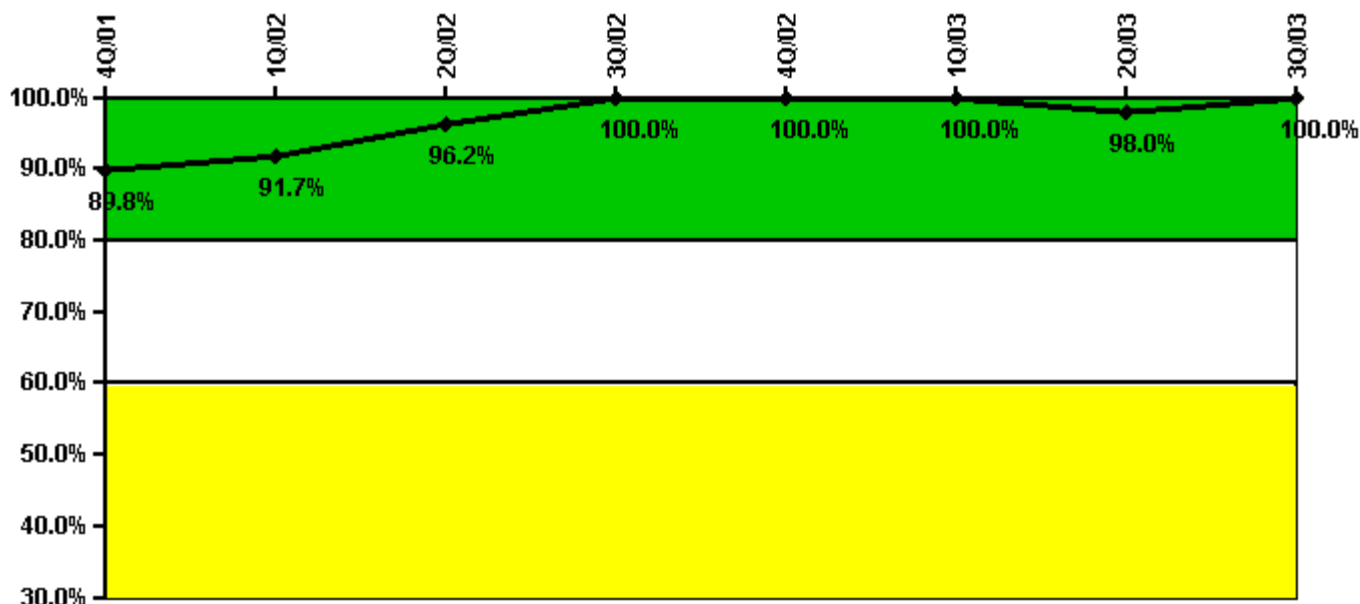
Thresholds: White < 90.0% Yellow < 70.0%

Notes

Drill/Exercise Performance	4Q/01	1Q/02	2Q/02	3Q/02	4Q/02	1Q/03	2Q/03	3Q/03
Successful opportunities	46.0	28.0	11.0	46.0	73.0	56.0	61.0	128.0
Total opportunities	49.0	31.0	12.0	50.0	77.0	58.0	62.0	130.0
Indicator value	96.4%	95.6%	95.3%	94.3%	94.5%	94.6%	94.9%	95.7%

Licensee Comments: none

ERO Drill Participation



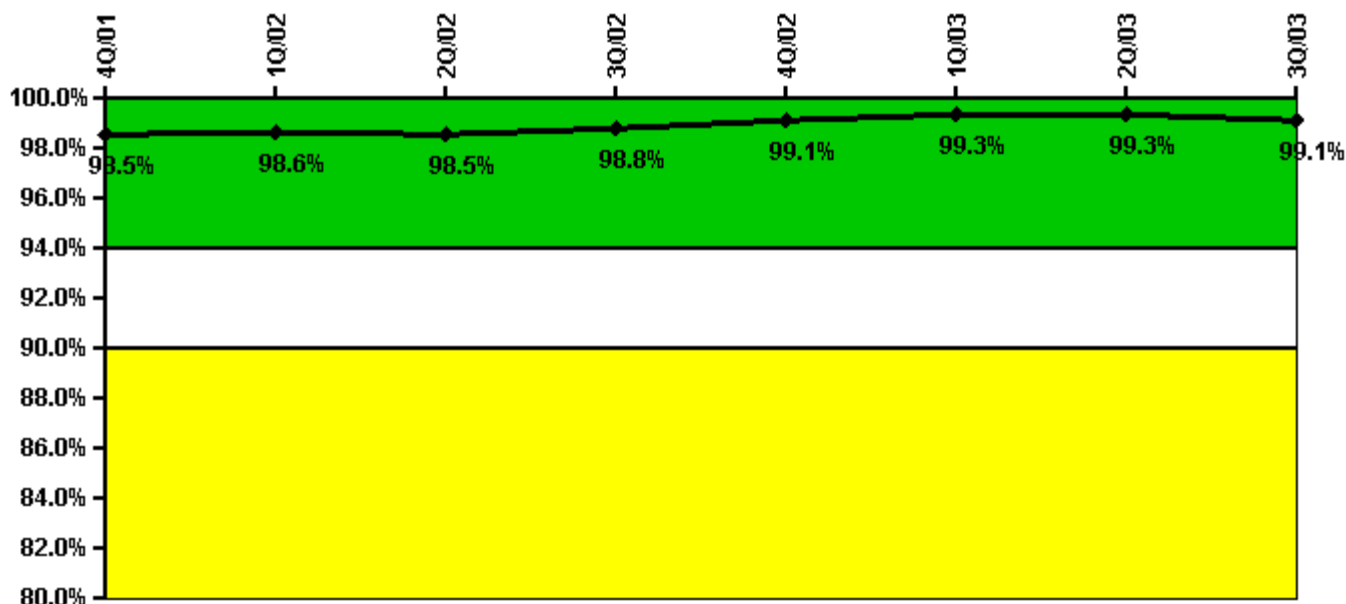
Thresholds: White < 80.0% Yellow < 60.0%

Notes

ERO Drill Participation	4Q/01	1Q/02	2Q/02	3Q/02	4Q/02	1Q/03	2Q/03	3Q/03
Participating Key personnel	44.0	44.0	50.0	53.0	51.0	53.0	49.0	52.0
Total Key personnel	49.0	48.0	52.0	53.0	51.0	53.0	50.0	52.0
Indicator value	89.8%	91.7%	96.2%	100.0%	100.0%	100.0%	98.0%	100.0%

Licensee Comments: none

Alert & Notification System



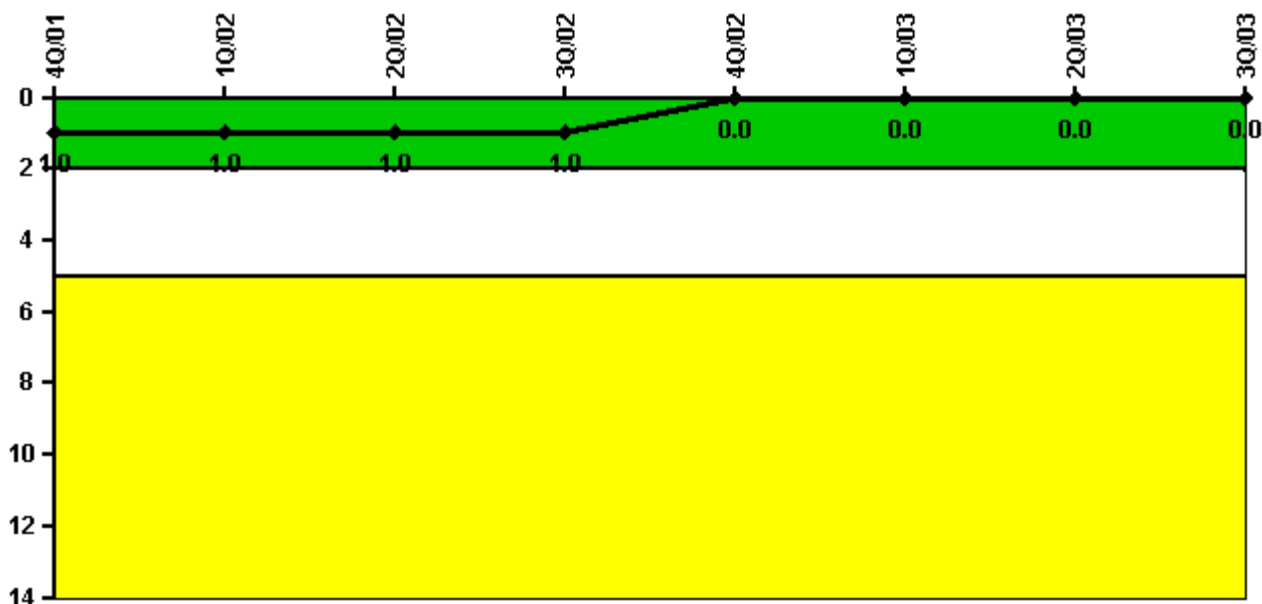
Thresholds: White < 94.0% Yellow < 90.0%

Notes

Alert & Notification System	4Q/01	1Q/02	2Q/02	3Q/02	4Q/02	1Q/03	2Q/03	3Q/03
Successful siren-tests	4489	4423	4462	4522	4538	4459	4461	4415
Total sirens-tests	4544	4473	4544	4544	4544	4473	4544	4482
Indicator value	98.5%	98.6%	98.5%	98.8%	99.1%	99.3%	99.3%	99.1%

Licensee Comments: none

Occupational Exposure Control Effectiveness



Thresholds: White > 2.0 Yellow > 5.0

Notes

Occupational Exposure Control Effectiveness	4Q/01	1Q/02	2Q/02	3Q/02	4Q/02	1Q/03	2Q/03	3Q/03
High radiation area occurrences	1	0	0	0	0	0	0	0
Very high radiation area occurrences	0	0	0	0	0	0	0	0
Unintended exposure occurrences	0	0	0	0	0	0	0	0
Indicator value	1	1	1	1	0	0	0	0

Licensee Comments: none

RETS/ODCM Radiological Effluent



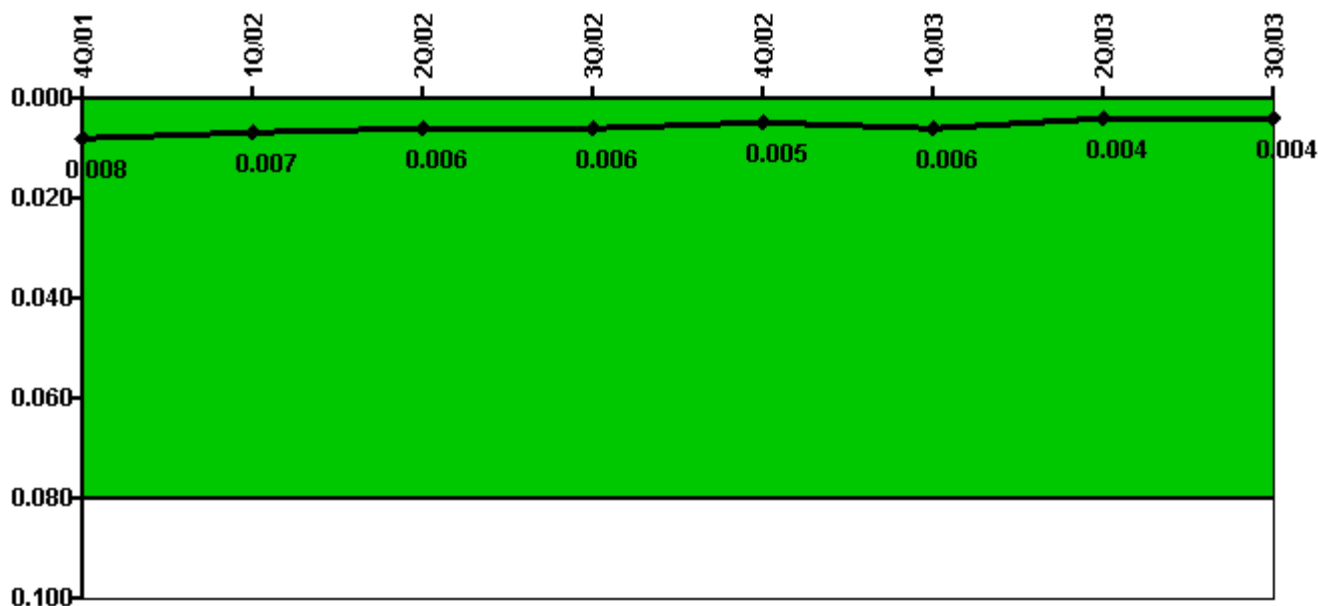
Thresholds: White > 1.0 Yellow > 3.0

Notes

RETS/ODCM Radiological Effluent	4Q/01	1Q/02	2Q/02	3Q/02	4Q/02	1Q/03	2Q/03	3Q/03
RETS/ODCM occurrences	0	0	0	0	0	0	0	0
Indicator value	0	0	0	0	0	0	0	0

Licensee Comments: none

Protected Area Security Performance Index



Thresholds: White > 0.080

Notes

Protected Area Security Performance Index	4Q/01	1Q/02	2Q/02	3Q/02	4Q/02	1Q/03	2Q/03	3Q/03
IDS compensatory hours	57.40	5.80	37.20	46.50	34.00	40.60	2.20	40.00
CCTV compensatory hours	10.4	2.0	3.2	0.7	0	0	0.4	0
IDS normalization factor	1.65	1.65	1.65	1.65	1.65	1.65	1.65	1.65
CCTV normalization factor	1.0	1.0	1.0	1.0	1.0	1.0	1.0	1.0
Index Value	0.008	0.007	0.006	0.006	0.005	0.006	0.004	0.004

Licensee Comments: none

Personnel Screening Program



Thresholds: White > 2.0 Yellow > 5.0

Notes

Personnel Screening Program	4Q/01	1Q/02	2Q/02	3Q/02	4Q/02	1Q/03	2Q/03	3Q/03
Program failures	0	0	0	0	0	0	0	0
Indicator value	0	0	0	0	0	0	0	0

Licensee Comments: none

FFD/Personnel Reliability



Thresholds: White > 2.0 Yellow > 5.0

Notes

FFD/Personnel Reliability	4Q/01	1Q/02	2Q/02	3Q/02	4Q/02	1Q/03	2Q/03	3Q/03
Program Failures	0	0	0	0	0	0	0	0
Indicator value	0	0	0	0	0	0	0	0

Licensee Comments: none

▲ [PI Summary](#) | [Inspection Findings Summary](#) | [Reactor Oversight Process](#)

Last Modified: October 28, 2003