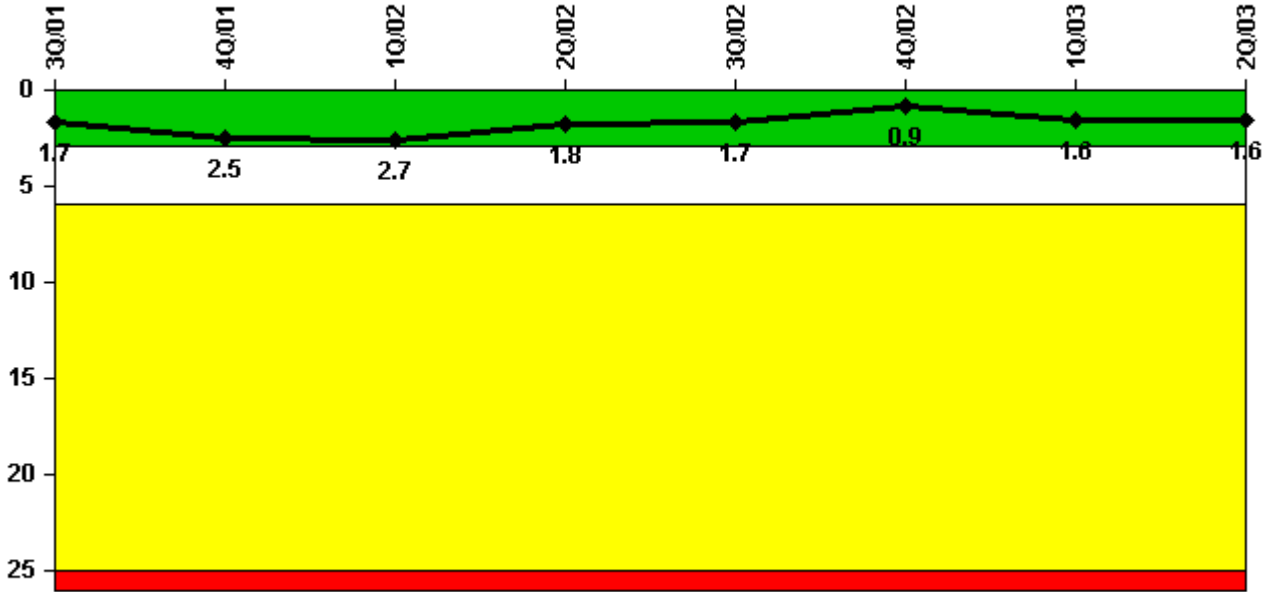


Watts Bar 1

2Q/2003 Performance Indicators

Licensee's General Comments: none

Unplanned Scrams per 7000 Critical Hrs



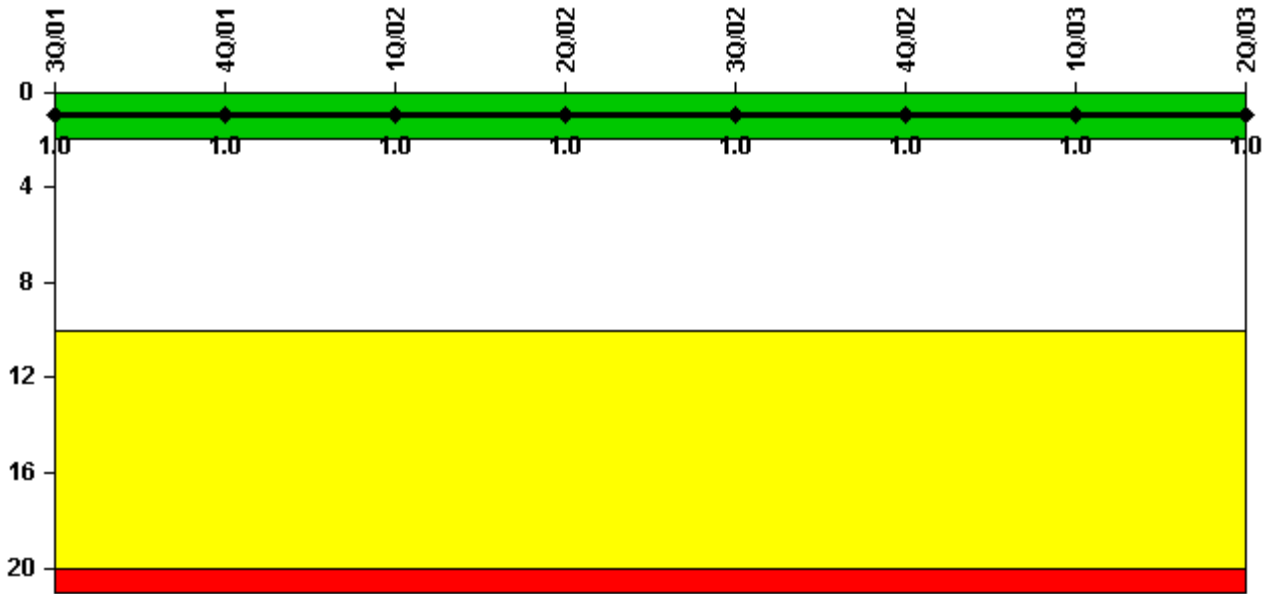
Thresholds: White > 3.0 Yellow > 6.0 Red > 25.0

Notes

Unplanned Scrams per 7000 Critical Hrs	3Q/01	4Q/01	1Q/02	2Q/02	3Q/02	4Q/02	1Q/03	2Q/03
Unplanned scrams	1.0	1.0	0	0	1.0	0	1.0	0
Critical hours	1956.9	2180.9	1611.3	2060.8	2185.5	2209.0	2036.0	2183.0
Indicator value	1.7	2.5	2.7	1.8	1.7	0.9	1.6	1.6

Licensee Comments: none

Scrams with Loss of Normal Heat Removal



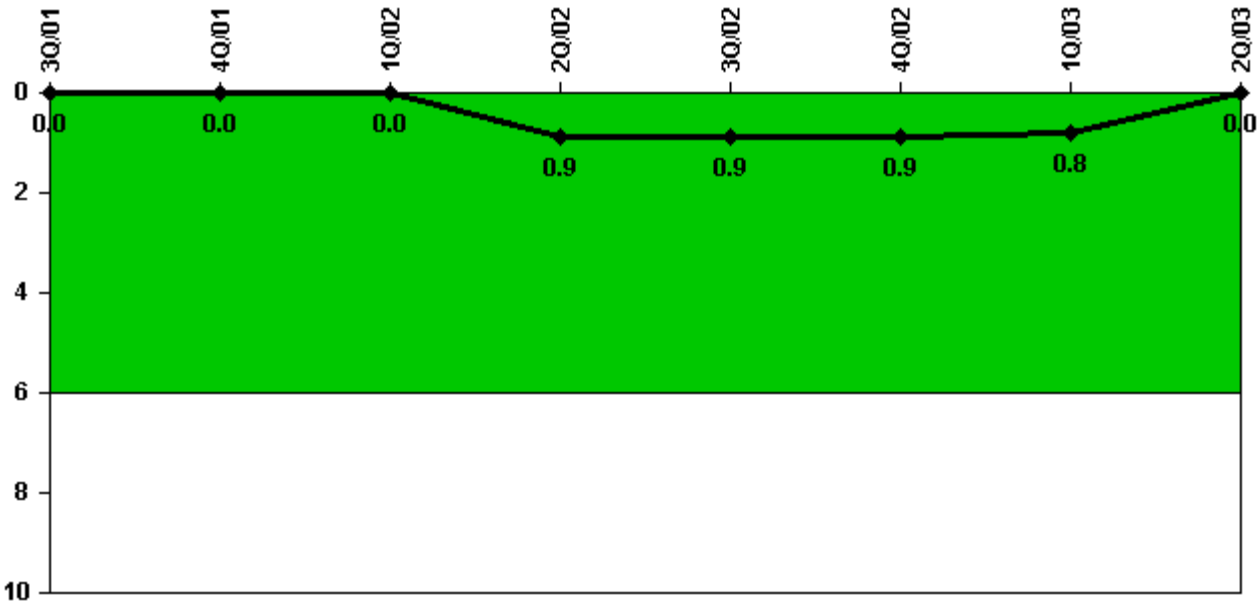
Thresholds: White > 2.0 Yellow > 10.0 Red > 20.0

Notes

Scrams with Loss of Normal Heat Removal	3Q/01	4Q/01	1Q/02	2Q/02	3Q/02	4Q/02	1Q/03	2Q/03
Scrams	1.0	0	0	0	0	0	0	0
Indicator value	1.0	1.0	1.0	1.0	1.0	1.0	1.0	1.0

Licensee Comments: none

Unplanned Power Changes per 7000 Critical Hrs



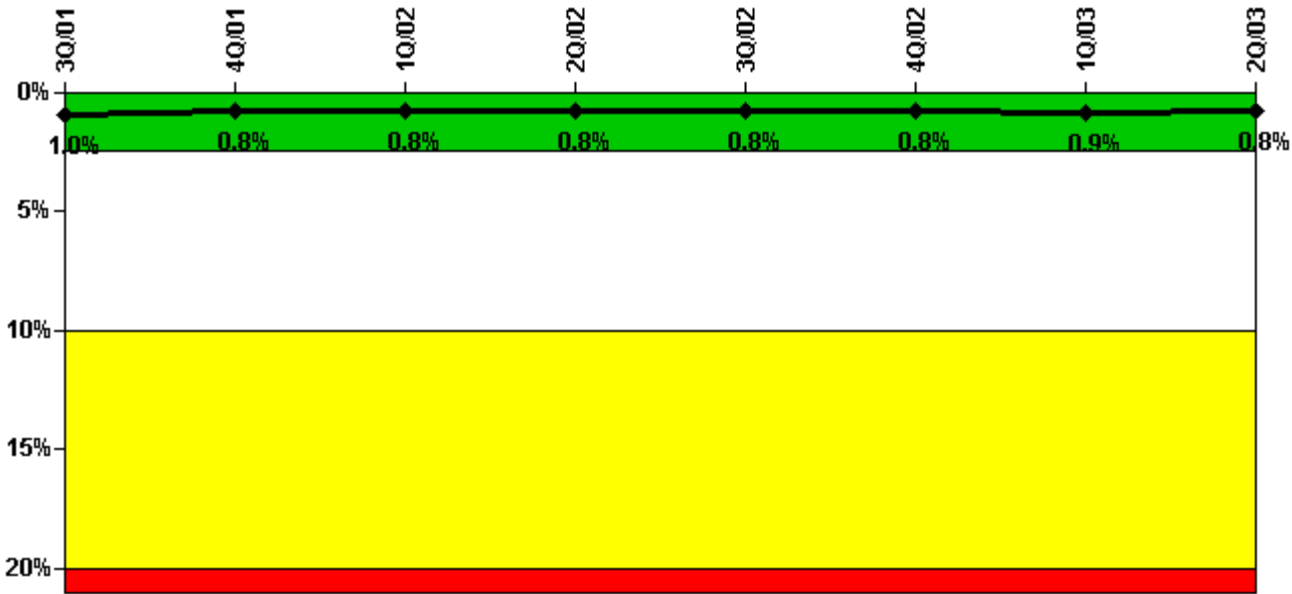
Thresholds: White > 6.0

Notes

Unplanned Power Changes per 7000 Critical Hrs	3Q/01	4Q/01	1Q/02	2Q/02	3Q/02	4Q/02	1Q/03	2Q/03
Unplanned power changes	0	0	0	1.0	0	0	0	0
Critical hours	1956.9	2180.9	1611.3	2060.8	2185.5	2209.0	2036.0	2183.0
Indicator value	0	0	0	0.9	0.9	0.9	0.8	0

Licensee Comments: none

Safety System Unavailability, Emergency AC Power, >2EDG



Thresholds: White > 2.5% Yellow > 10.0% Red > 20.0%

Notes

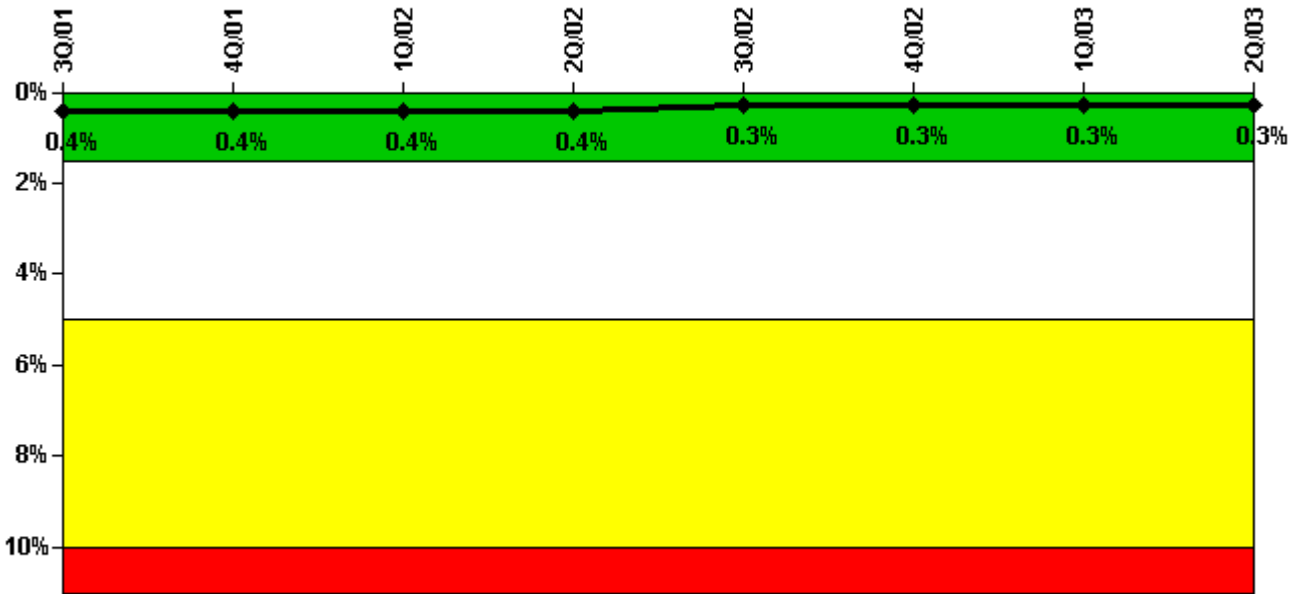
Safety System Unavailability, Emergency AC Power, >2EDG	3Q/01	4Q/01	1Q/02	2Q/02	3Q/02	4Q/02	1Q/03	2Q/03
Train 1								
Planned unavailable hours	2.03	14.73	2.14	4.55	1.05	7.75	37.72	27.43
Unplanned unavailable hours	0	0	0	0	0	0	0	0
Fault exposure hours	0	0	0	0	0	0	0	0
Effective Reset hours	0	0	0	0	0	0	0	0
Required hours	2208.00	2209.00	1938.06	2183.00	2208.00	2209.00	2160.00	2183.00
Train 2								
Planned unavailable hours	2.05	1.15	1.85	1.37	1.16	0.67	46.23	1.60
Unplanned unavailable hours	0	0	0	0	0	0	0	0
Fault exposure hours	0	0	0	0	0	0	0	0
Effective Reset hours	0	0	0	0	0	0	0	0
Required hours	2123.63	2209.00	1902.72	2183.00	2208.00	2209.00	2160.00	2183.00
Train 3								
Planned unavailable hours	2.42	7.01	2.00	1.39	1.23	1.35	54.45	2.20
Unplanned unavailable hours	0	0	0	0	0	0	21.93	0
Fault exposure hours	0	0	0	0	0	0	0	0
Effective Reset hours	0	0	0	0	0	0	0	0
Required hours	2208.00	2209.00	1938.06	2183.00	2208.00	2209.00	2160.00	2183.00
Train 4								
Planned unavailable hours	4.88	9.20	6.45	0.62	2.48	1.00	80.63	0.68
Unplanned unavailable hours	0	0	0	0	0	0	0	0
Fault exposure hours	0	0	0	0	0	0	0	0
Effective Reset hours	0	0	0	0	0	0	0	0
Required hours	2123.63	2209.00	1902.72	2183.00	2208.00	2209.00	2160.00	2183.00

Indicator value	1.0%	0.8%	0.8%	0.8%	0.8%	0.8%	0.9%	0.8%

Licensee Comments:

2Q/03: Diesel generators 2A-A and 2B-B were taken out of service for planned overhauls during the month of June. During these overhauls, the 2A-A unit was unavailable for 117 hours, 12 minutes while 2B-B was unavailable for 138 hours, 11 minutes. In accordance with NEI 99-02, Revision 2, the unavailability hours associated with the overhauls does not have to be reported under the NEI program. The incremental core damage probability associated with these work activities was 4.60×10^{-7} and 7.21×10^{-7} for 2A-A and 2B-B respectively which was less than the NEI 99-02 maximum of 1×10^{-6} . The higher than normal unavailability hours for diesel generator 1A-A were due to maintenance activities associated with replacement of 1-ITS-82-A2 and degraded lube oil pump.

Safety System Unavailability, High Pressure Injection System (HPSI)



Thresholds: White > 1.5% Yellow > 5.0% Red > 10.0%

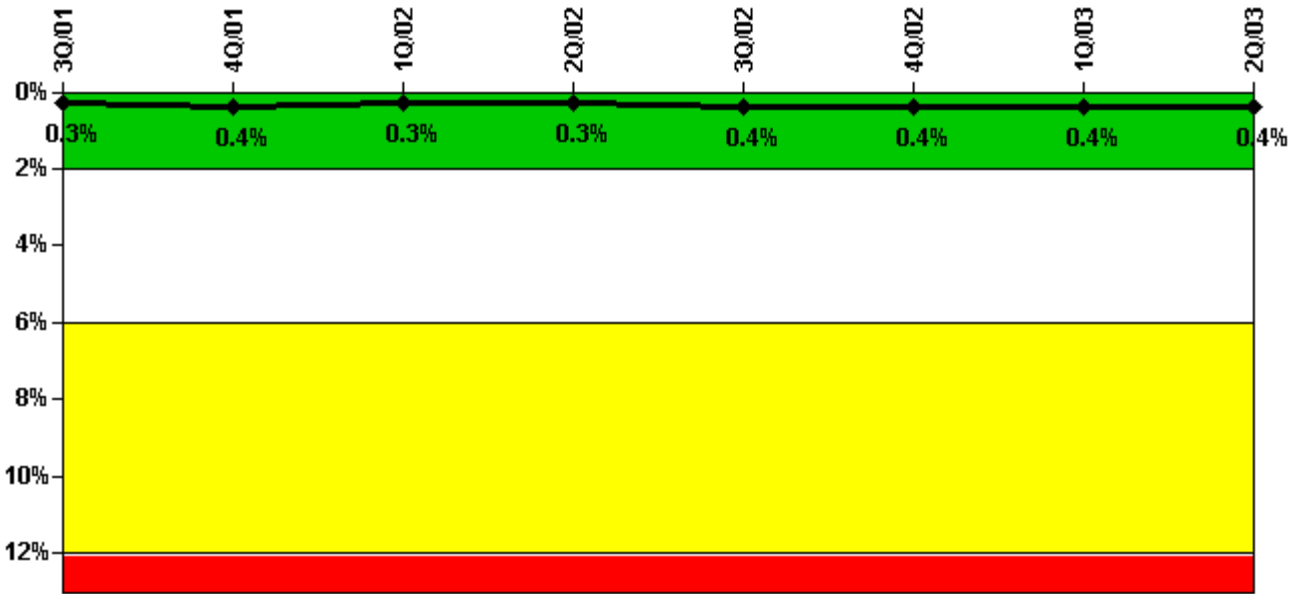
Notes

Safety System Unavailability, High Pressure Injection System (HPSI)	3Q/01	4Q/01	1Q/02	2Q/02	3Q/02	4Q/02	1Q/03	2Q/03
Train 1								
Planned unavailable hours	0.20	4.40	7.30	8.60	2.10	14.70	5.50	2.70
Unplanned unavailable hours	0.30	0	0	0	0	0	0	0
Fault exposure hours	0	0	0	0	0	0	0	0
Effective Reset hours	0	0	0	0	0	0	0	0

Required hours	2123.60	2209.00	1678.00	2099.70	2208.00	2209.00	2160.00	2183.00
Train 2								
Planned unavailable hours	0.30	1.70	2.00	0.10	3.10	3.70	1.90	34.00
Unplanned unavailable hours	0.10	0	0	0	0	0	0	0
Fault exposure hours	0	0	0	0	0	0	0	0
Effective Reset hours	0	0	0	0	0	0	0	0
Required hours	2014.00	2209.00	1665.50	2087.30	2208.00	2209.00	2160.00	2183.00
Train 3								
Planned unavailable hours	5.60	19.70	5.40	12.50	2.20	4.00	22.80	3.60
Unplanned unavailable hours	0.30	0	0	0	0	0	0	0
Fault exposure hours	0	0	0	0	0	0	0	0
Effective Reset hours	0	0	0	0	0	0	0	0
Required hours	2014.00	2209.00	1662.70	2087.30	2208.00	2209.00	2160.00	2183.00
Train 4								
Planned unavailable hours	20.60	4.10	3.40	0.80	5.00	3.90	23.60	19.10
Unplanned unavailable hours	0	0	0	0	0	0	0	0
Fault exposure hours	0	0	0	0	0	0	0	0
Effective Reset hours	0	0	0	0	0	0	0	0
Required hours	2014.00	2209.00	1662.70	2087.30	2208.00	2209.00	2160.00	2183.00
Indicator value	0.4%	0.4%	0.4%	0.4%	0.3%	0.3%	0.3%	0.3%

Licensee Comments: none

Safety System Unavailability, Heat Removal System (AFW)



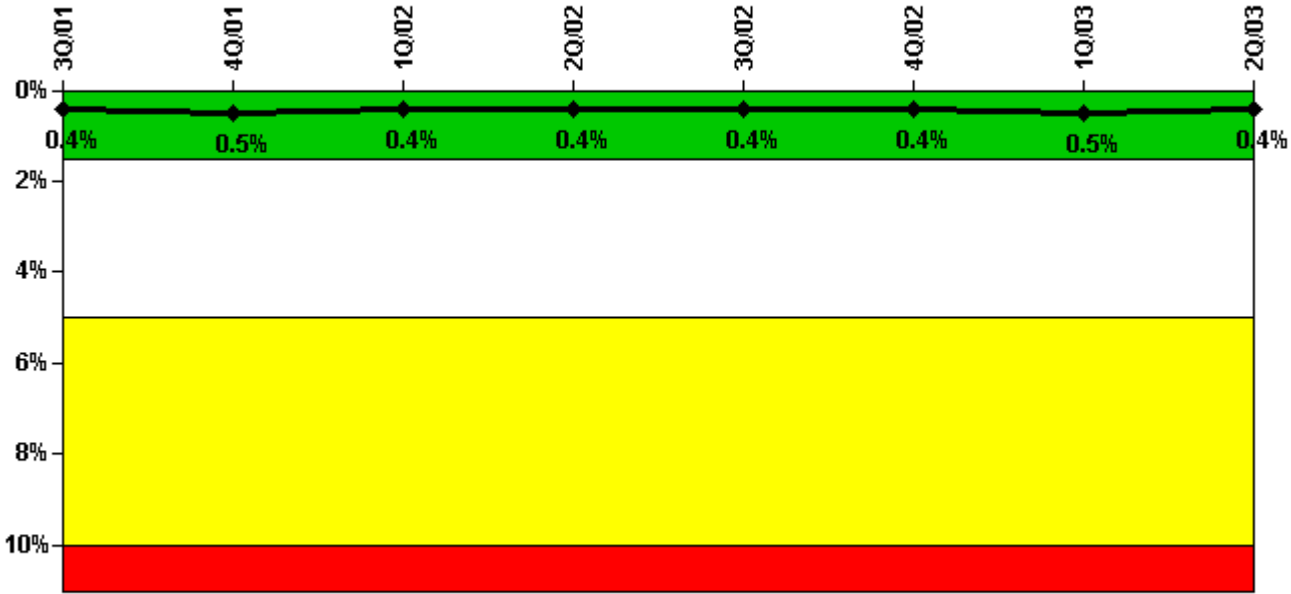
Thresholds: White > 2.0% Yellow > 6.0% Red > 12.0%

Notes

Safety System Unavailability, Heat Removal System (AFW)	3Q/01	4Q/01	1Q/02	2Q/02	3Q/02	4Q/02	1Q/03	2Q/03
Train 1								
Planned unavailable hours	3.70	25.85	3.38	8.97	1.90	3.18	12.55	31.59
Unplanned unavailable hours	0.90	0	0	0	0	0	0	0
Fault exposure hours	0	0	0	0	0	0	0	0
Effective Reset hours	0	0	0	0	0	0	0	0
Required hours	2014.00	2209.00	1680.80	2099.70	2208.00	2209.00	2160.00	2183.00
Train 2								
Planned unavailable hours	8.00	13.56	2.38	0	11.20	3.44	8.18	5.76
Unplanned unavailable hours	1.10	0	0	0	0	0	0	0
Fault exposure hours	0	0	0	0	0	0	0	0
Effective Reset hours	0	0	0	0	0	0	0	0
Required hours	2014.00	2209.00	1680.80	2099.70	2208.00	2209.00	2160.00	2183.00
Train 3								
Planned unavailable hours	2.00	8.04	4.07	0.03	11.80	0.65	13.82	28.17
Unplanned unavailable hours	0	0	0	0	0	0	0	0
Fault exposure hours	0	0	0	0	0	0	0	0
Effective Reset hours	0	0	0	0	0	0	0	0
Required hours	2014.00	2209.00	1662.60	2087.30	2208.00	2209.00	2160.00	2183.00
Indicator value	0.3%	0.4%	0.3%	0.3%	0.4%	0.4%	0.4%	0.4%

Licensee Comments: none

Safety System Unavailability, Residual Heat Removal System



Thresholds: White > 1.5% Yellow > 5.0% Red > 10.0%

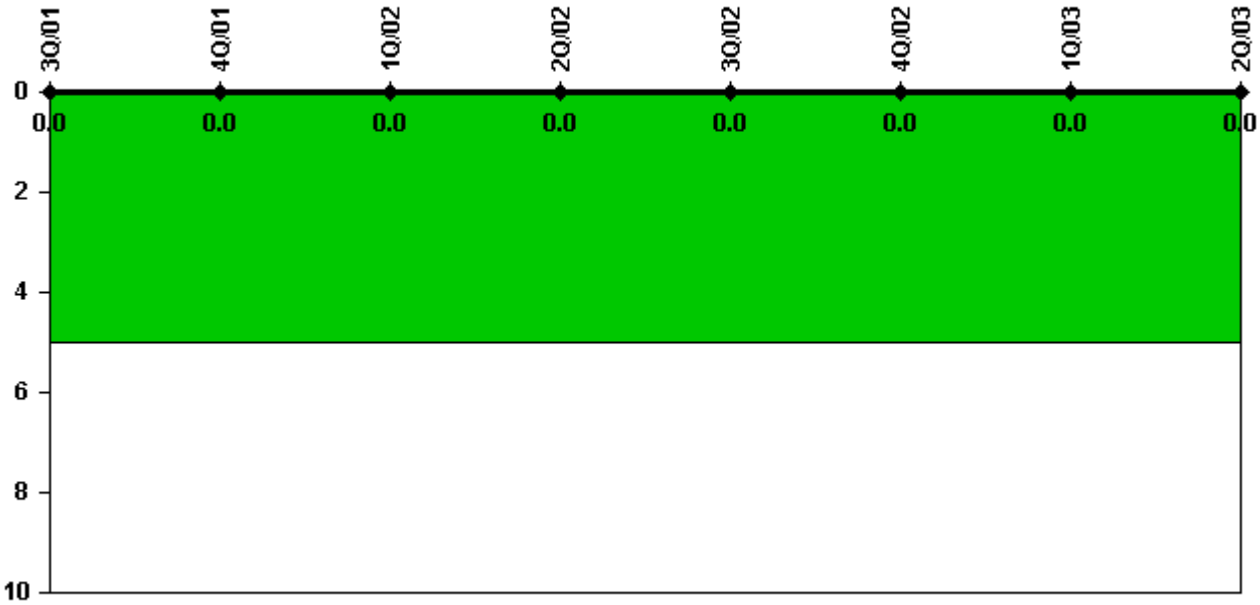
Notes

Safety System Unavailability, Residual Heat Removal System	3Q/01	4Q/01	1Q/02	2Q/02	3Q/02	4Q/02	1Q/03	2Q/03
Train 1								
Planned unavailable hours	2.30	31.47	5.24	10.49	3.43	5.67	50.35	7.32
Unplanned unavailable hours	0.30	0	0.03	0	0	0	0	0
Fault exposure hours	0	0	0	0	0	0	0	0
Effective Reset hours	0	0	0	0	0	0	0	0
Required hours	2208.00	2209.00	2091.40	2183.00	2208.00	2209.00	2160.00	2183.00
Train 2								
Planned unavailable hours	2.20	30.63	5.37	9.95	8.32	5.90	4.14	21.00
Unplanned unavailable hours	0	0	0.03	0	0	0	0	0
Fault exposure hours	0	0	0	0	0	0	0	0
Effective Reset hours	0	0	0	0	0	0	0	0
Required hours	2208.00	2209.00	2091.40	2183.00	2208.00	2209.00	2160.00	2183.00
Indicator value	0.4%	0.5%	0.4%	0.4%	0.4%	0.4%	0.5%	0.4%

Licensee Comments:

2Q/03: There is a 30-minute estimate used (based on historical data) for the removal of M&TE off of FIS-74-12 which causes pump unavailability. This estimate is used because LCO entries were not made. Reference PER 03-009371-000 for failure to make LCO entries.

Safety System Functional Failures (PWR)



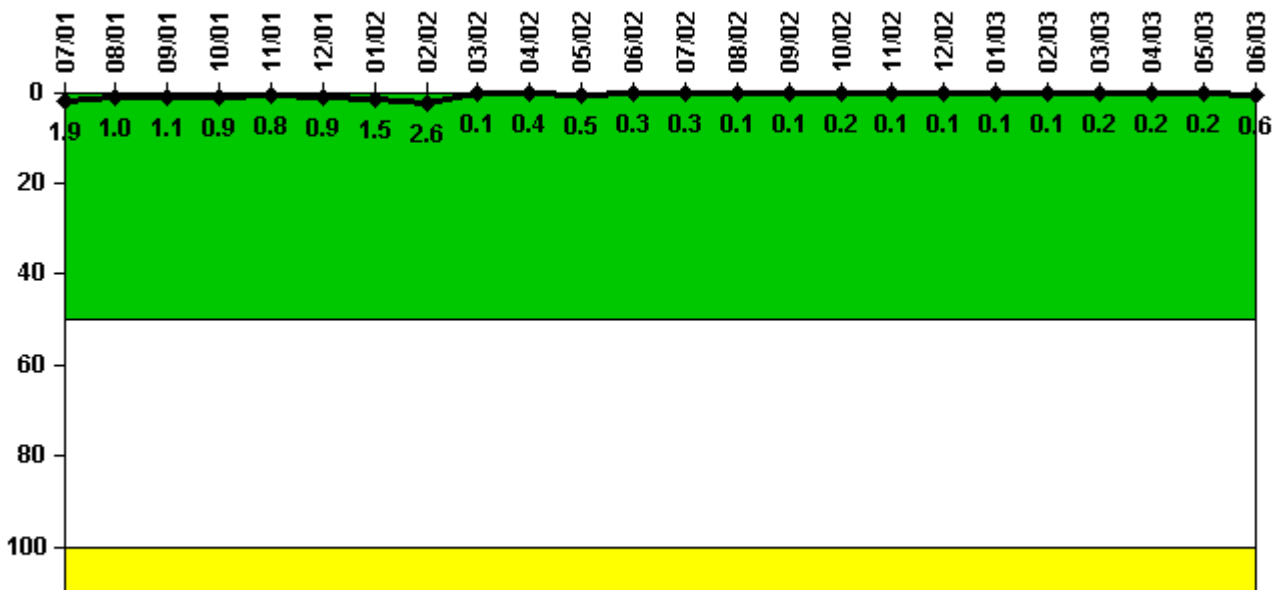
Thresholds: White > 5.0

Notes

Safety System Functional Failures (PWR)	3Q/01	4Q/01	1Q/02	2Q/02	3Q/02	4Q/02	1Q/03	2Q/03
Safety System Functional Failures	0	0	0	0	0	0	0	0
Indicator value	0	0	0	0	0	0	0	0

Licensee Comments: none

Reactor Coolant System Leakage



Thresholds: White > 50.0 Yellow > 100.0

Notes

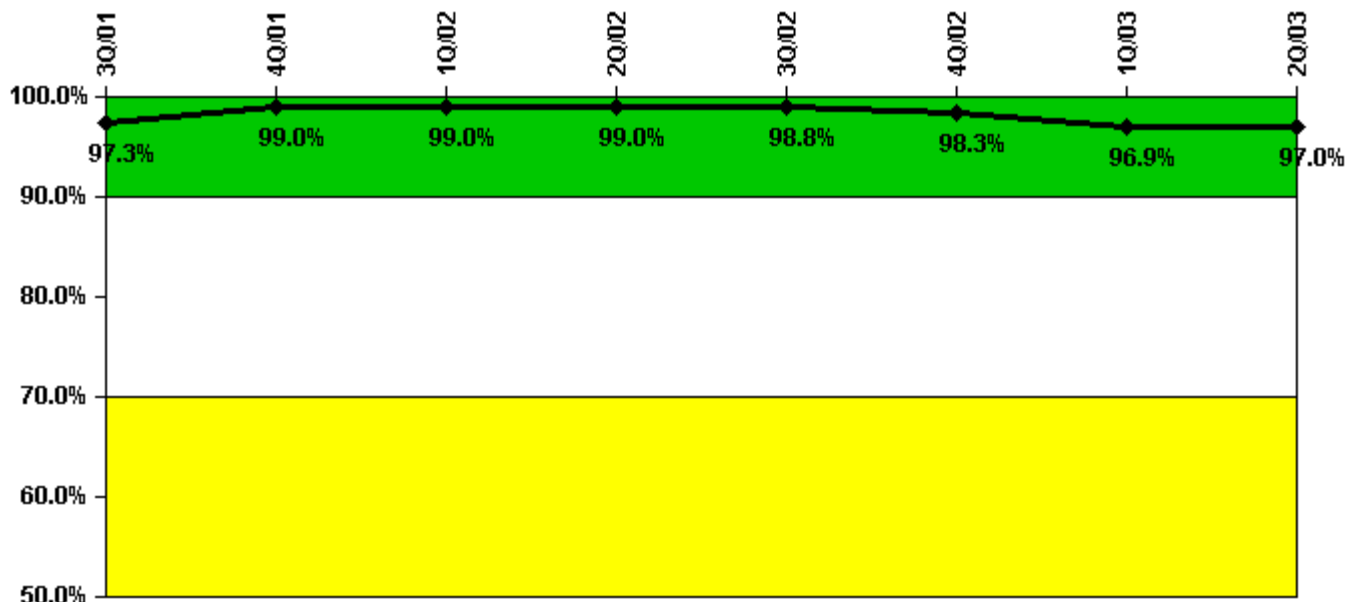
Reactor Coolant System Leakage	7/01	8/01	9/01	10/01	11/01	12/01	1/02	2/02	3/02	4/02	5/02	6/02
Maximum leakage	0.190	0.100	0.110	0.090	0.080	0.090	0.150	0.260	0.010	0.040	0.050	0.030
Technical specification limit	10.0	10.0	10.0	10.0	10.0	10.0	10.0	10.0	10.0	10.0	10.0	10.0
Indicator value	1.9	1.0	1.1	0.9	0.8	0.9	1.5	2.6	0.1	0.4	0.5	0.3

Reactor Coolant System Leakage	7/02	8/02	9/02	10/02	11/02	12/02	1/03	2/03	3/03	4/03	5/03	6/03
Maximum leakage	0.030	0.010	0.010	0.020	0.010	0.010	0.010	0.010	0.020	0.020	0.020	0.060
Technical specification limit	10.0	10.0	10.0	10.0	10.0	10.0	10.0	10.0	10.0	10.0	10.0	10.0
Indicator value	0.3	0.1	0.1	0.2	0.1	0.1	0.1	0.1	0.2	0.2	0.2	0.6

Licensee Comments:

6/02: This data is being reported as revised values. The value for May 2002 (2nd month of quarter) changed from 0.04 to 0.05 gpm. This change does not affect the color of the indicator.

Drill/Exercise Performance



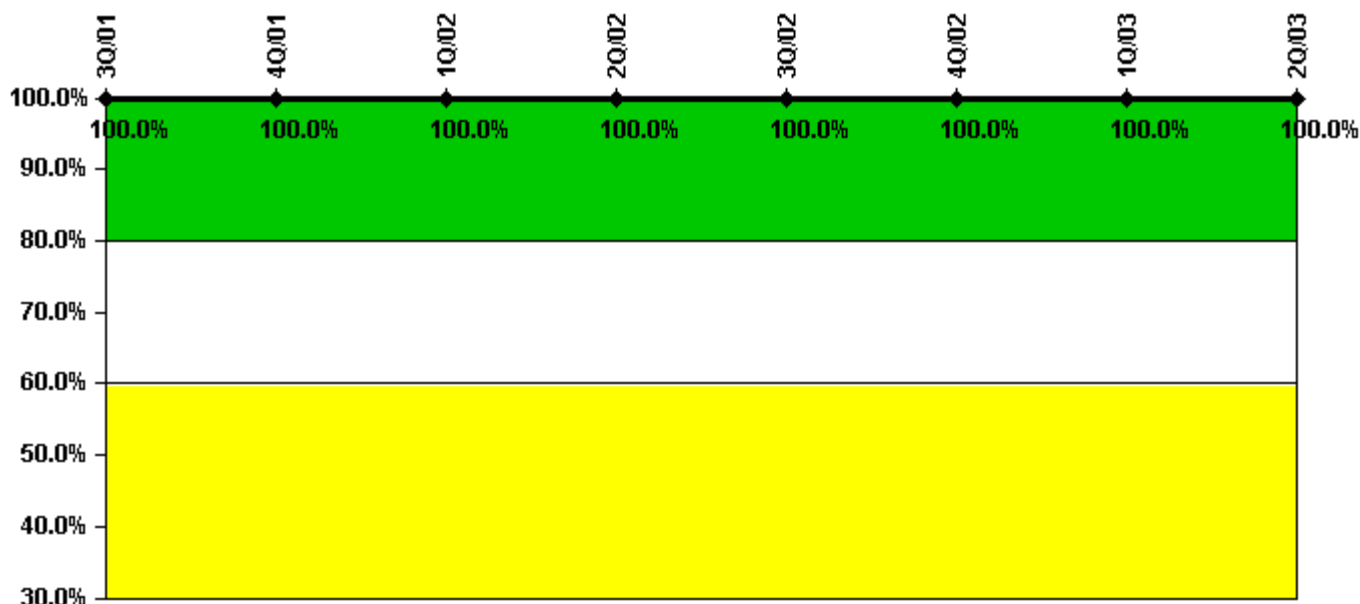
Thresholds: White < 90.0% Yellow < 70.0%

Notes

Drill/Exercise Performance	3Q/01	4Q/01	1Q/02	2Q/02	3Q/02	4Q/02	1Q/03	2Q/03
Successful opportunities	8.0	49.0	0	6.0	8.0	45.0	8.0	6.0
Total opportunities	8.0	50.0	0	6.0	8.0	46.0	10.0	6.0
Indicator value	97.3%	99.0%	99.0%	99.0%	98.8%	98.3%	96.9%	97.0%

Licensee Comments: none

ERO Drill Participation



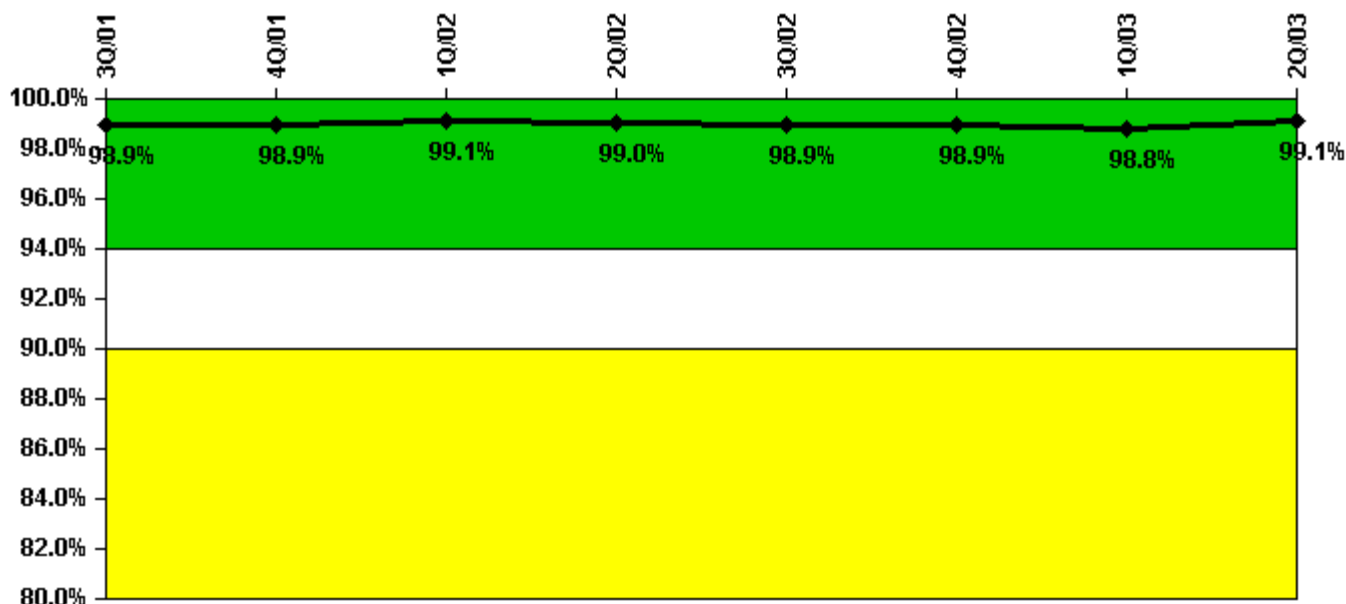
Thresholds: White < 80.0% Yellow < 60.0%

Notes

ERO Drill Participation	3Q/01	4Q/01	1Q/02	2Q/02	3Q/02	4Q/02	1Q/03	2Q/03
Participating Key personnel	47.0	50.0	50.0	54.0	54.0	56.0	56.0	57.0
Total Key personnel	47.0	50.0	50.0	54.0	54.0	56.0	56.0	57.0
Indicator value	100.0%	100.0%	100.0%	100.0%	100.0%	100.0%	100.0%	100.0%

Licensee Comments: none

Alert & Notification System



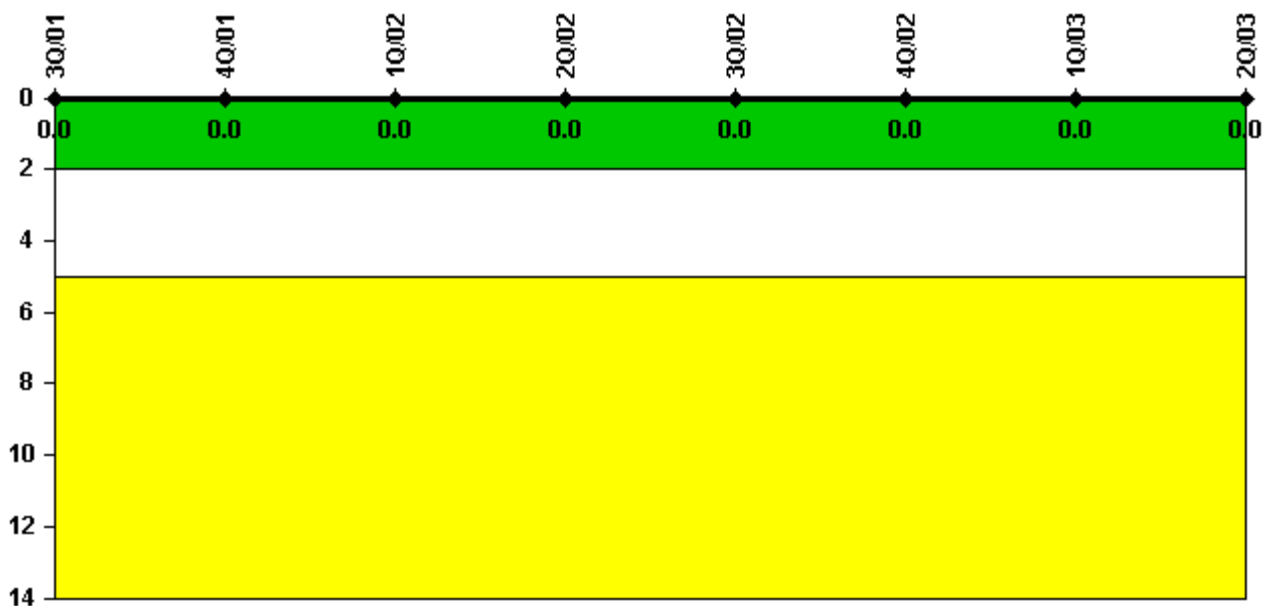
Thresholds: White < 94.0% Yellow < 90.0%

Notes

Alert & Notification System	3Q/01	4Q/01	1Q/02	2Q/02	3Q/02	4Q/02	1Q/03	2Q/03
Successful siren-tests	886	882	688	777	785	882	686	885
Total sirens-tests	891	891	693	792	792	891	693	891
Indicator value	98.9%	98.9%	99.1%	99.0%	98.9%	98.9%	98.8%	99.1%

Licensee Comments: none

Occupational Exposure Control Effectiveness



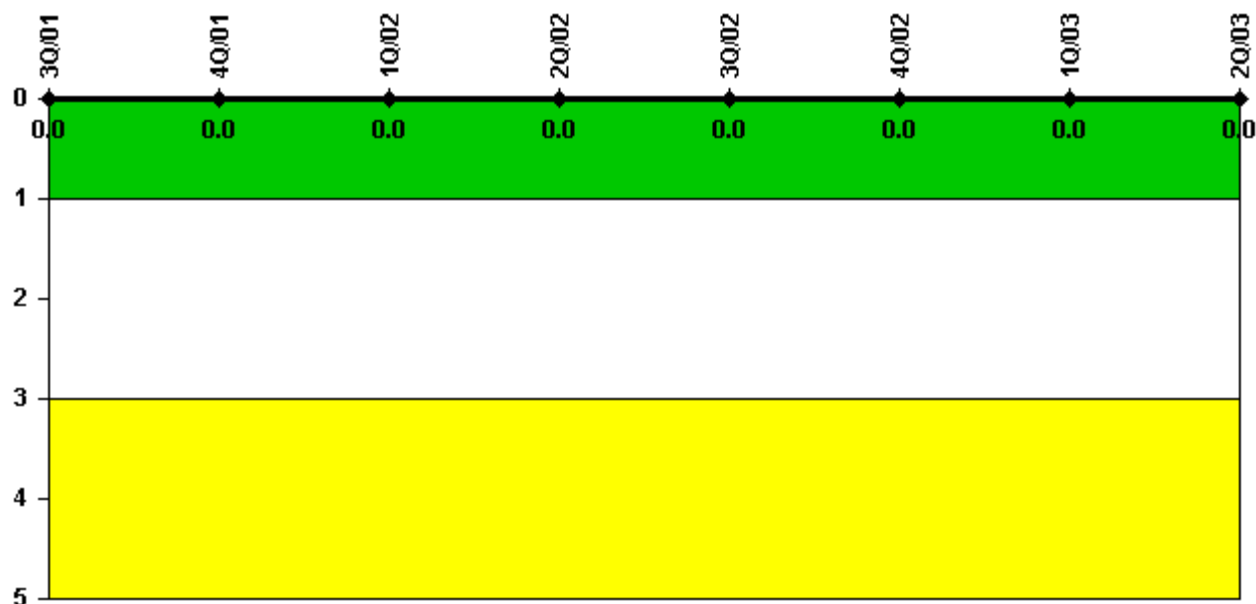
Thresholds: White > 2.0 Yellow > 5.0

Notes

Occupational Exposure Control Effectiveness	3Q/01	4Q/01	1Q/02	2Q/02	3Q/02	4Q/02	1Q/03	2Q/03
High radiation area occurrences	0	0	0	0	0	0	0	0
Very high radiation area occurrences	0	0	0	0	0	0	0	0
Unintended exposure occurrences	0	0	0	0	0	0	0	0
Indicator value	0	0	0	0	0	0	0	0

Licensee Comments: none

RETS/ODCM Radiological Effluent



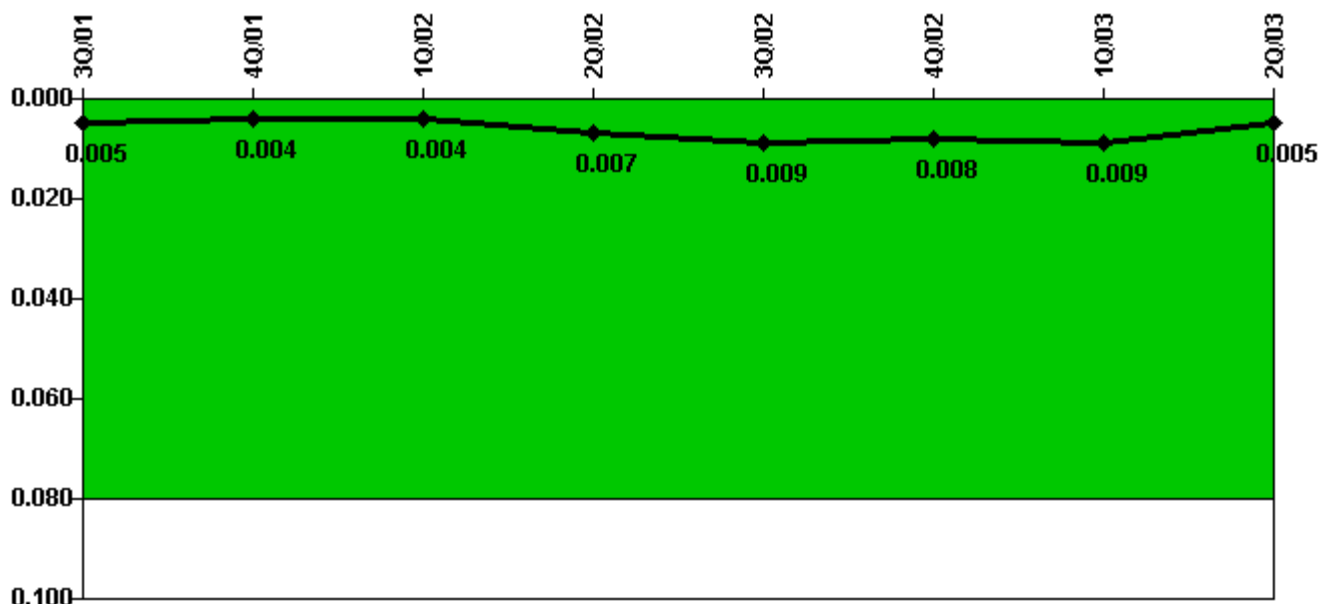
Thresholds: White > 1.0 Yellow > 3.0

Notes

RETS/ODCM Radiological Effluent	3Q/01	4Q/01	1Q/02	2Q/02	3Q/02	4Q/02	1Q/03	2Q/03
RETS/ODCM occurrences	0	0	0	0	0	0	0	0
Indicator value	0	0	0	0	0	0	0	0

Licensee Comments: none

Protected Area Security Performance Index



Thresholds: White > 0.080

Notes

Protected Area Security Performance Index	3Q/01	4Q/01	1Q/02	2Q/02	3Q/02	4Q/02	1Q/03	2Q/03
IDS compensatory hours	21.00	22.90	11.10	46.70	62.30	14.10	40.10	76.60
CCTV compensatory hours	1.6	6.2	23.8	151.7	6.4	0.4	15.2	0
IDS normalization factor	2.40	2.40	2.40	2.40	2.40	2.40	2.40	2.40
CCTV normalization factor	2.1	2.1	2.1	2.1	2.1	2.1	2.1	2.1
Index Value	0.005	0.004	0.004	0.007	0.009	0.008	0.009	0.005

Licensee Comments:

1Q/03: An error in data collection was discovered which resulted in an increase of 5.2 hours for the CCTV system for March 2003. This change does not affect the color of the indicator.

Personnel Screening Program



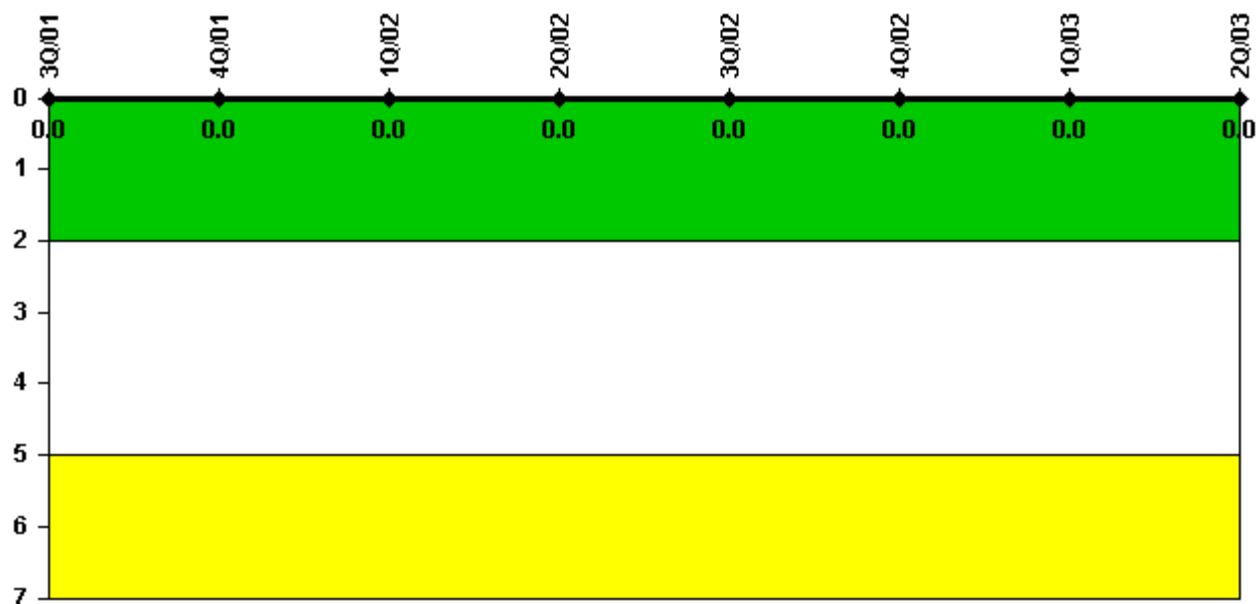
Thresholds: White > 2.0 Yellow > 5.0

Notes

Personnel Screening Program	3Q/01	4Q/01	1Q/02	2Q/02	3Q/02	4Q/02	1Q/03	2Q/03
Program failures	0	0	0	0	0	0	0	0
Indicator value	0	0	0	0	0	0	0	0

Licensee Comments: none

FFD/Personnel Reliability



Thresholds: White > 2.0 Yellow > 5.0

Notes

FFD/Personnel Reliability	3Q/01	4Q/01	1Q/02	2Q/02	3Q/02	4Q/02	1Q/03	2Q/03
Program Failures	0	0	0	0	0	0	0	0
Indicator value	0	0	0	0	0	0	0	0

Licensee Comments: none

▲ [PI Summary](#) | [Inspection Findings Summary](#) | [Reactor Oversight Process](#)

Last Modified: July 22, 2003