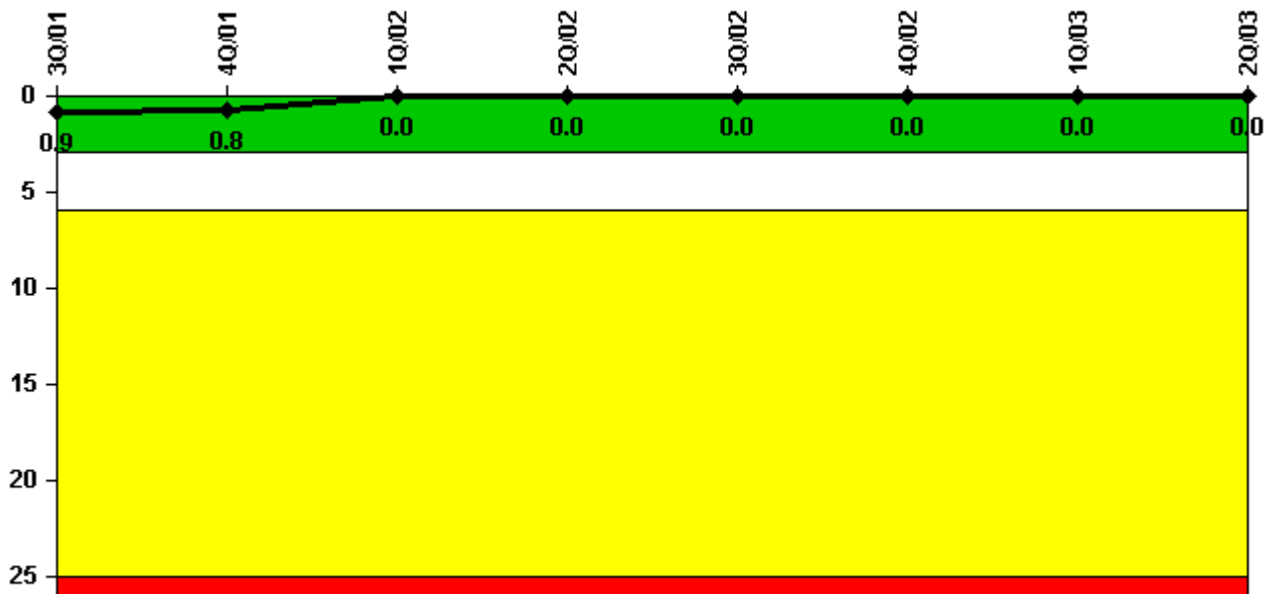


Waterford 3

2Q/2003 Performance Indicators

Licensee's General Comments: none

Unplanned Scrams per 7000 Critical Hrs



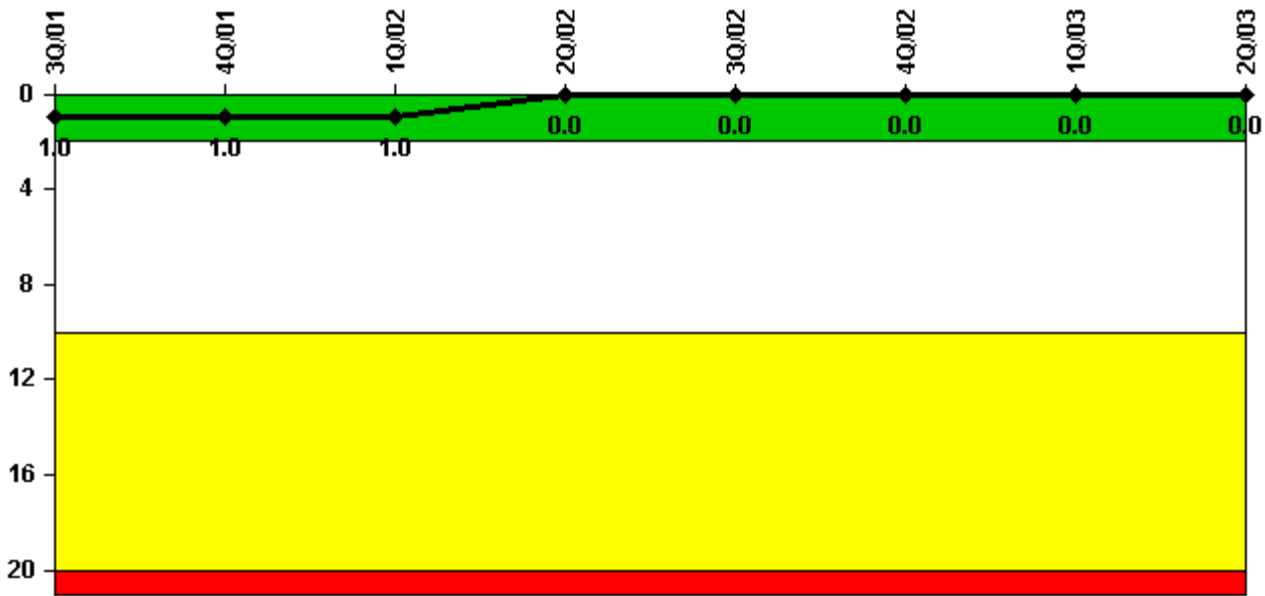
Thresholds: White > 3.0 Yellow > 6.0 Red > 25.0

Notes

Unplanned Scrams per 7000 Critical Hrs	3Q/01	4Q/01	1Q/02	2Q/02	3Q/02	4Q/02	1Q/03	2Q/03
Unplanned scrams	0	0	0	0	0	0	0	0
Critical hours	2208.0	2209.0	1942.9	1806.0	2208.0	2209.0	2115.1	2183.0
Indicator value	0.9	0.8	0	0	0	0	0	0

Licensee Comments: none

Scrams with Loss of Normal Heat Removal



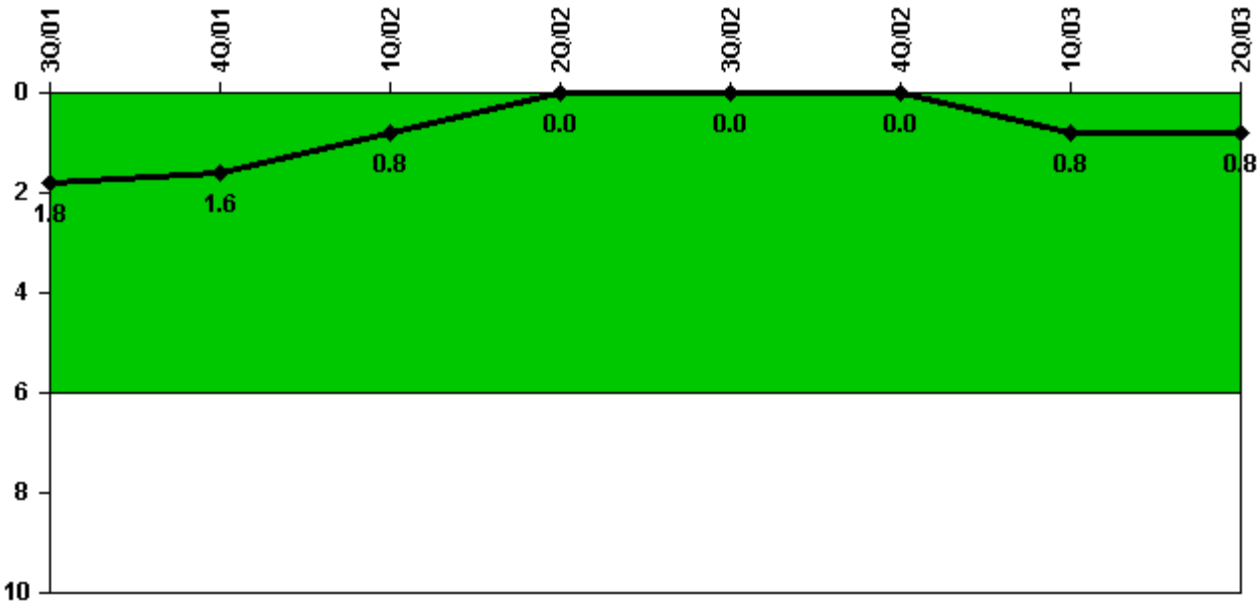
Thresholds: White > 2.0 Yellow > 10.0 Red > 20.0

Notes

Scrams with Loss of Normal Heat Removal	3Q/01	4Q/01	1Q/02	2Q/02	3Q/02	4Q/02	1Q/03	2Q/03
Scrams	0	0	0	0	0	0	0	0
Indicator value	1.0	1.0	1.0	0	0	0	0	0

Licensee Comments: none

Unplanned Power Changes per 7000 Critical Hrs



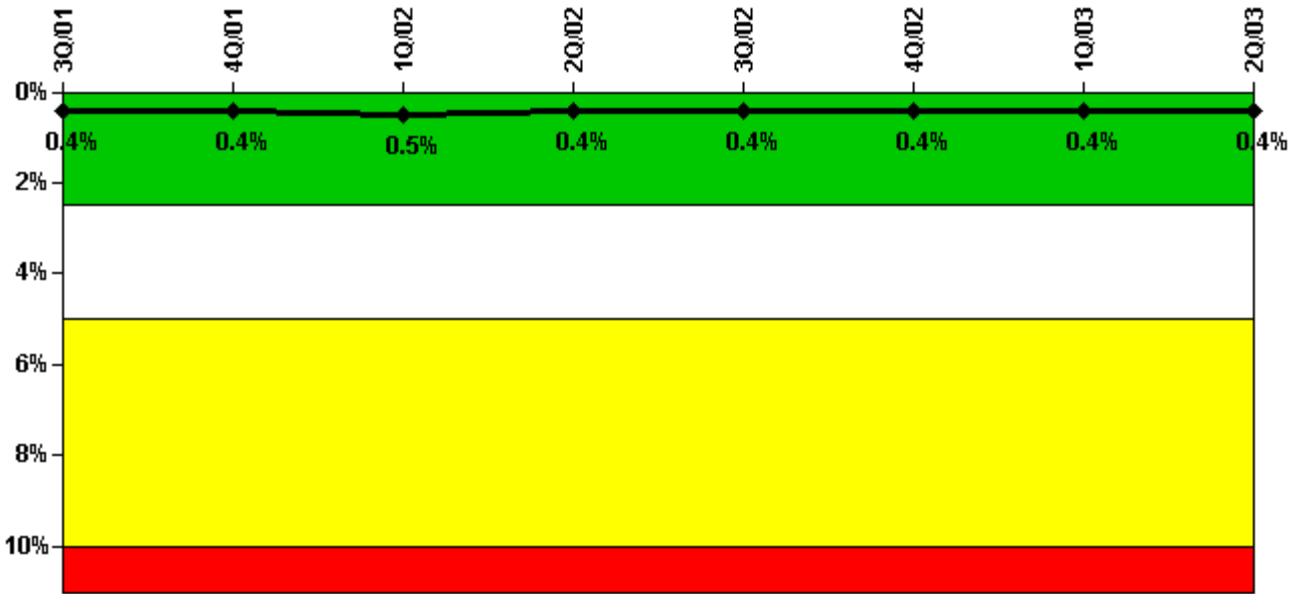
Thresholds: White > 6.0

Notes

Unplanned Power Changes per 7000 Critical Hrs	3Q/01	4Q/01	1Q/02	2Q/02	3Q/02	4Q/02	1Q/03	2Q/03
Unplanned power changes	0	0	0	0	0	0	1.0	0
Critical hours	2208.0	2209.0	1942.9	1806.0	2208.0	2209.0	2115.1	2183.0
Indicator value	1.8	1.6	0.8	0	0	0	0.8	0.8

Licensee Comments: none

Safety System Unavailability, Emergency AC Power



Thresholds: White > 2.5% Yellow > 5.0% Red > 10.0%

Notes

Safety System Unavailability, Emergency AC Power	3Q/01	4Q/01	1Q/02	2Q/02	3Q/02	4Q/02	1Q/03	2Q/03
Train 1								
Planned unavailable hours	0	5.68	9.95	0	0	0	0	0
Unplanned unavailable hours	20.73	47.48	0	0	0	10.50	0	21.88
Fault exposure hours	0	0	0	0	0	0	0	0
Effective Reset hours	0	0	0	0	0	0	0	0
Required hours	2208.00	2209.00	2160.00	2183.00	2208.00	2209.00	2160.00	2183.00
Train 2								
Planned unavailable hours	0	1.92	12.77	0	0	30.53	25.08	0
Unplanned unavailable hours	0	0	0	0	8.02	0	0	0
Fault exposure hours	0	0	0	0	0	0	0	0
Effective Reset hours	0	0	0	0	0	0	0	0
Required hours	2208.00	2209.00	2160.00	2183.00	2208.00	2209.00	2160.00	2183.00
Indicator value	0.4%	0.4%	0.5%	0.4%	0.4%	0.4%	0.4%	0.4%

Licensee Comments:

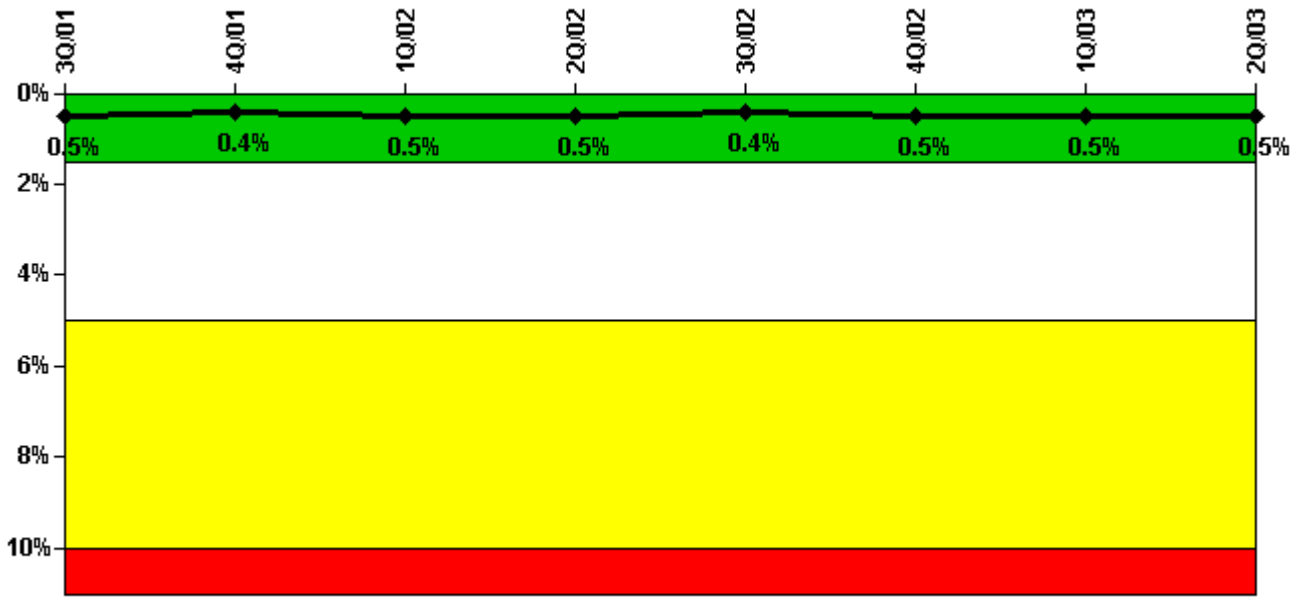
2Q/03: A correction to previously submitted data is being submitted this quarter that adds unavailable hours for the 3rd quarter 2001 (4.4 hours) and 4th quarter 2002 (10.5 hours). The corrections do not change the color of this indicator.

4Q/02: A correction to this quarter's data is being made that adds 10.50 hours of unplanned unavailability. This correction was submitted with the 2nd quarter 2003 submittal. This change has no affect on the indicator color.

3Q/01: A correction to this quarter's data is being made that adds 4.40 hours of unplanned unavailability. This

correction was submitted with the 2nd quarter 2003 submittal. This change has no affect on the indicator color.

Safety System Unavailability, High Pressure Injection System (HPSI)



Thresholds: White > 1.5% Yellow > 5.0% Red > 10.0%

Notes

Safety System Unavailability, High Pressure Injection System (HPSI)	3Q/01	4Q/01	1Q/02	2Q/02	3Q/02	4Q/02	1Q/03	2Q/03
Train 1								
Planned unavailable hours	22.43	14.38	9.80	0	0	0	0	21.42
Unplanned unavailable hours	4.98	0	0	0	0	10.50	0	21.88
Fault exposure hours	0	0	0	0	0	0	0	0
Effective Reset hours	0	0	0	0	0	0	0	0
Required hours	2208.00	2209.00	1952.78	1838.62	2208.00	2209.00	2160.00	2183.00
Train 2								
Planned unavailable hours	0	0	42.24	0	0	30.53	45.46	0
Unplanned unavailable hours	0	0	0	0	0	0	0	0
Fault exposure hours	0	0	0	0	0	0	0	0
Effective Reset hours	0	0	0	0	0	0	0	0
Required hours	2208.00	2209.00	1952.78	1838.62	2208.00	2209.00	2160.00	2183.00
Indicator value	0.5%	0.4%	0.5%	0.5%	0.4%	0.5%	0.5%	0.5%

Licensee Comments:

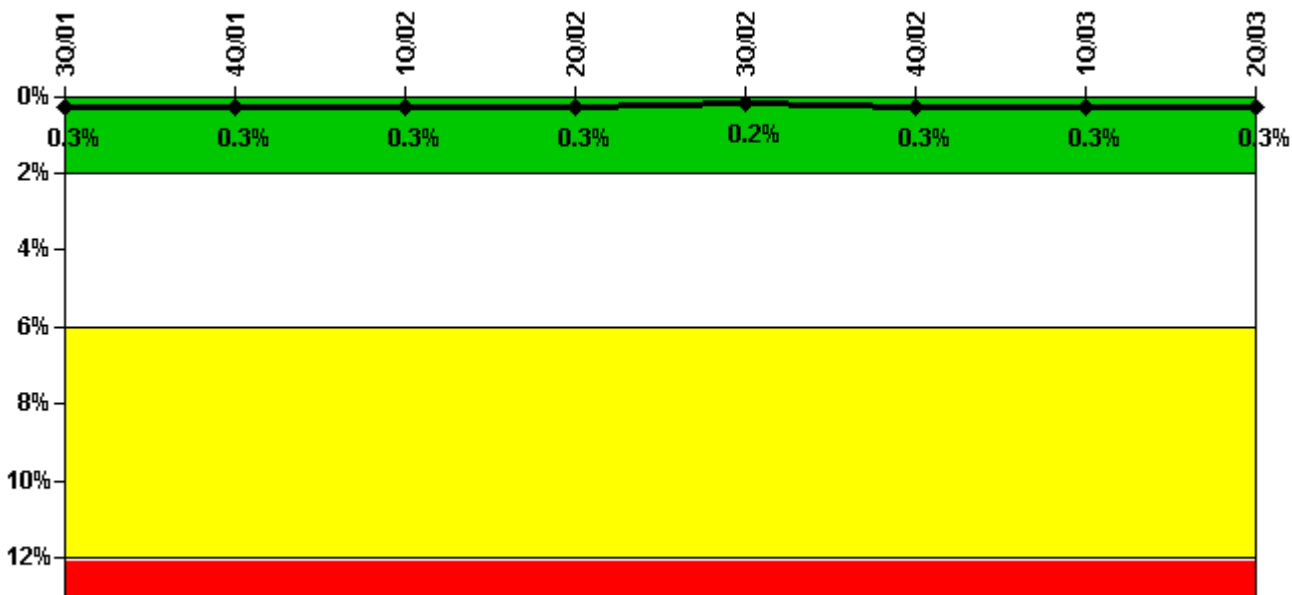
2Q/03: A correction to previously submitted data is being submitted this quarter that adds unavailable hours for the 3rd quarter 2001 (4.4 hours), 1st quarter 2002 (27.82 hours), and 4th quarter 2002 (10.5 hours). The corrections do not change the color of this indicator.

4Q/02: A correction to this quarter's data is being made that adds 10.50 hours of unplanned unavailability. This correction was submitted with the 2nd quarter 2003 submittal. This change has no affect on the indicator color.

1Q/02: A correction to this quarter's data is being made that adds 27.82 hours of planned unavailability. This correction was submitted with the 2nd quarter 2003 submittal. This change has no affect on the indicator color.

3Q/01: A correction to this quarter's data is being made that adds 4.40 hours of unplanned unavailability. This correction was submitted with the 2nd quarter 2003 submittal. This change has no affect on the indicator color.

Safety System Unavailability, Heat Removal System (AFW)



Thresholds: White > 2.0% Yellow > 6.0% Red > 12.0%

Notes

Safety System Unavailability, Heat Removal System (AFW)	3Q/01	4Q/01	1Q/02	2Q/02	3Q/02	4Q/02	1Q/03	2Q/03
Train 1								
Planned unavailable hours	11.00	14.38	9.80	6.22	0	0	11.77	0
Unplanned unavailable hours	4.98	0	0	0	0	10.50	0	21.88
Fault exposure hours	0	0	0	0	0	0	0	0
Effective Reset hours	0	0	0	0	0	0	0	0
Required hours	2208.00	2209.00	1952.78	1838.62	2208.00	2209.00	2160.00	2183.00

Train 2								
Planned unavailable hours	8.38	0.32	12.77	0	0	30.53	30.40	0
Unplanned unavailable hours	0	0	0	0	0	0	0	0
Fault exposure hours	0	0	0	0	0	0	0	0
Effective Reset hours	0	0	0	0	0	0	0	0
Required hours	2208.00	2209.00	1952.78	1838.62	2208.00	2209.00	2160.00	2183.00
Train 3								
Planned unavailable hours	0	0	0	0	0	0	0	0
Unplanned unavailable hours	0	0	0	0	0	0	0	0
Fault exposure hours	0	0	0	0	0	0	0	0
Effective Reset hours	0	0	0	0	0	0	0	0
Required hours	2208.00	2209.00	1952.78	1838.62	2208.00	2209.00	2160.00	2183.00
Indicator value	0.3%	0.3%	0.3%	0.3%	0.2%	0.3%	0.3%	0.3%

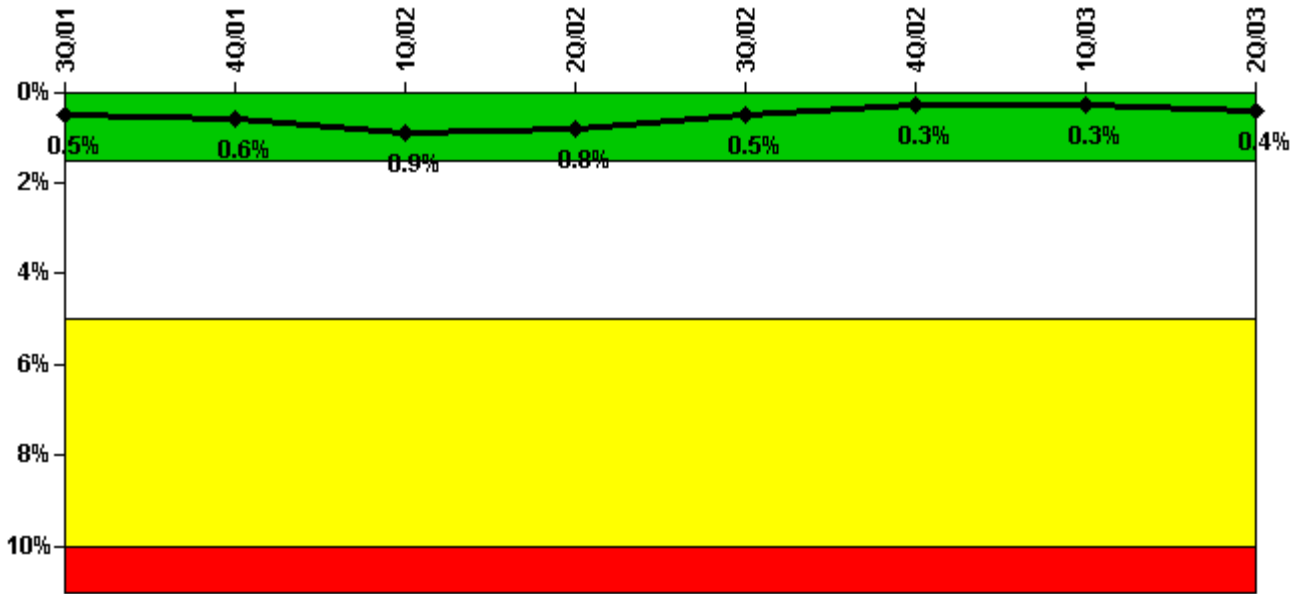
Licensee Comments:

2Q/03: A correction to previously submitted data is being submitted this quarter that adds unavailable hours for the 3rd quarter 2001 (4.4 hours) and 4th quarter 2002 (10.5 hours). The corrections do not change the color of this indicator.

4Q/02: A correction to this quarter's data is being made that adds 10.50 hours of unplanned unavailability. This correction was submitted with the 2nd quarter 2003 submittal. This change has no affect on the indicator color.

3Q/01: A correction to this quarter's data is being made that adds 4.40 hours of unplanned unavailability. This correction was submitted with the 2nd quarter 2003 submittal. This change has no affect on the indicator color.

Safety System Unavailability, Residual Heat Removal System



Thresholds: White > 1.5% Yellow > 5.0% Red > 10.0%

Notes

Safety System Unavailability, Residual Heat Removal System	3Q/01	4Q/01	1Q/02	2Q/02	3Q/02	4Q/02	1Q/03	2Q/03
Train 1								
Planned unavailable hours	0	14.38	9.80	0	0	0	0	21.42
Unplanned unavailable hours	4.98	0	0	0	0	10.50	0	21.88
Fault exposure hours	0	0	0	0	0	0	0	0
Effective Reset hours	0	0	0	0	0	0	0	0
Required hours	2208.00	2209.00	1952.78	1838.62	2208.00	2209.00	2160.00	2183.00
Train 2								
Planned unavailable hours	0	18.52	34.25	0	0	30.53	46.38	21.65
Unplanned unavailable hours	0	0	0	0	0	0	0	0
Fault exposure hours	0	0	0	0	0	0	0	0
Effective Reset hours	0	0	0	0	0	0	0	0
Required hours	2208.00	2209.00	1952.78	1838.62	2208.00	2209.00	2160.00	2183.00
Train 3								
Planned unavailable hours	0	0	0	0	0	0	0	0
Unplanned unavailable hours	0	0	0	0	0	0	0	0
Fault exposure hours	0	0	2.83	0	0	0	0	0
Effective Reset hours	0	0	0	0	0	0	0	0
Required hours	0	0	207.22	345.38	0	0	0	0
Train 4								
Planned unavailable hours	0	0	0	0	0	0	0	0
Unplanned unavailable hours	0	0	0	0	0	0	0	0
Fault exposure hours	0	0	2.93	0	0	0	0	0
Effective Reset hours	0	0	0	0	0	0	0	0
Required hours	0	0	207.22	345.38	0	0	0	0

Indicator value	0.5%	0.6%	0.9%	0.8%	0.5%	0.3%	0.3%	0.4%

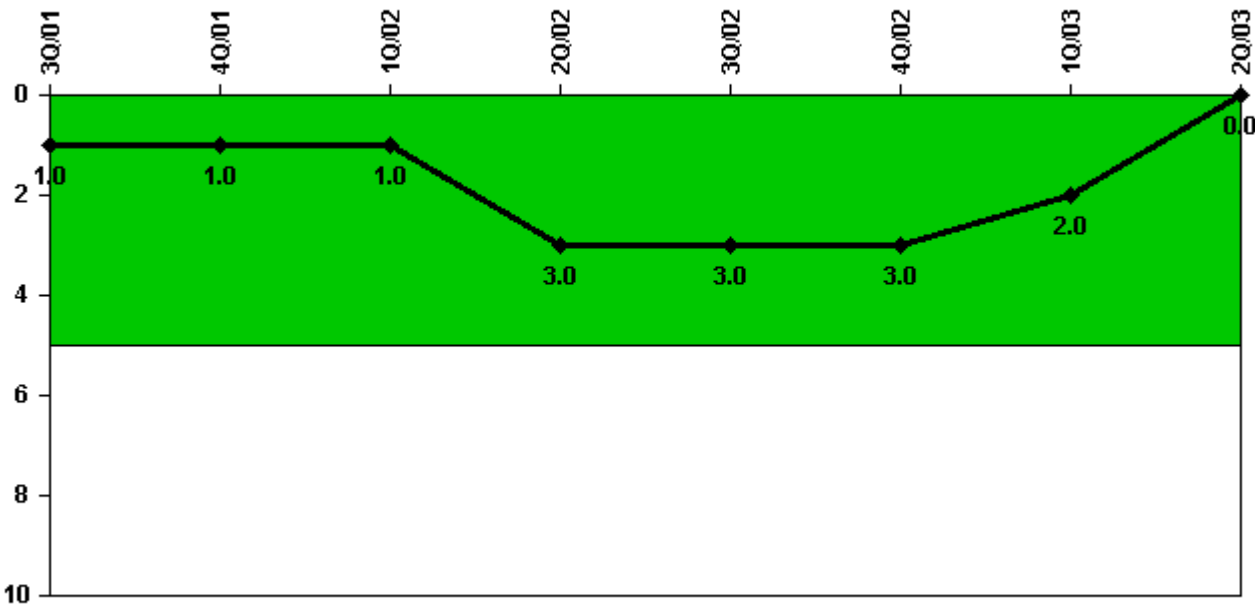
Licensee Comments:

2Q/03: A correction to previously submitted data is being submitted this quarter that adds unavailable hours for the 3rd quarter 2001 (4.4 hours) and 4th quarter 2002 (10.5 hours). The corrections do not change the color of this indicator.

4Q/02: A correction to this quarter's data is being made that adds 10.50 hours of unplanned unavailability. This correction was submitted with the 2nd quarter 2003 submittal. This change has no affect on the indicator color.

3Q/01: A correction to this quarter's data is being made that adds 4.40 hours of unplanned unavailability. This correction was submitted with the 2nd quarter 2003 submittal. This change has no affect on the indicator color.

Safety System Functional Failures (PWR)



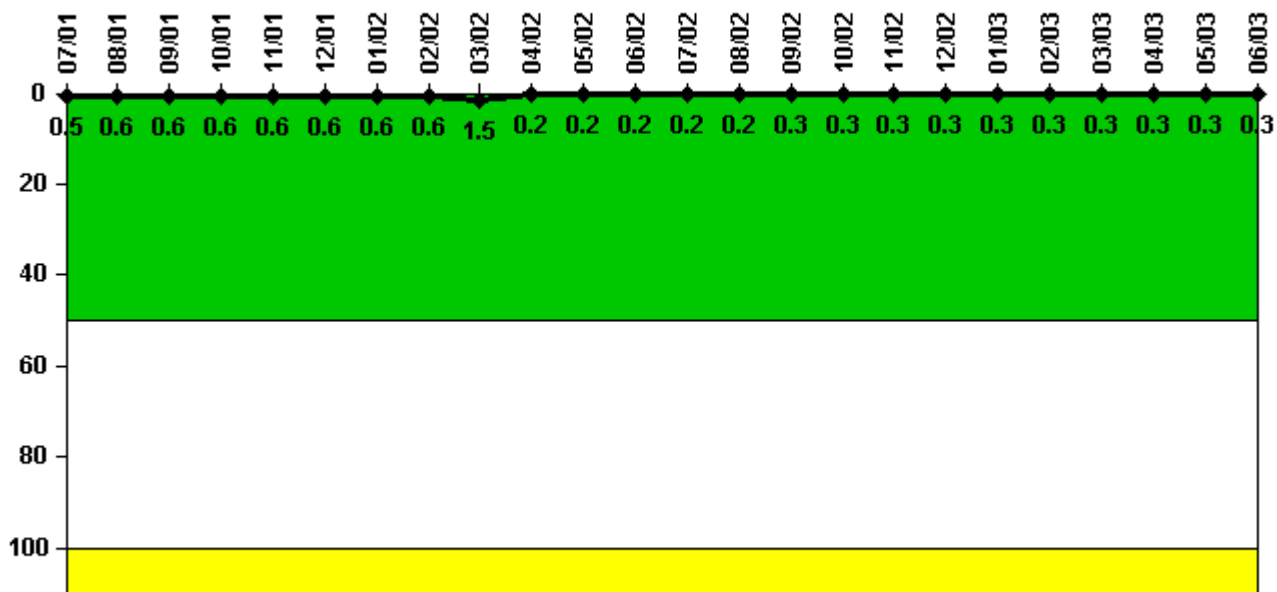
Thresholds: White > 5.0

Notes

Safety System Functional Failures (PWR)	3Q/01	4Q/01	1Q/02	2Q/02	3Q/02	4Q/02	1Q/03	2Q/03
Safety System Functional Failures	0	0	1	2	0	0	0	0
Indicator value	1	1	1	3	3	3	2	0

Licensee Comments: none

Reactor Coolant System Activity



Thresholds: White > 50.0 Yellow > 100.0

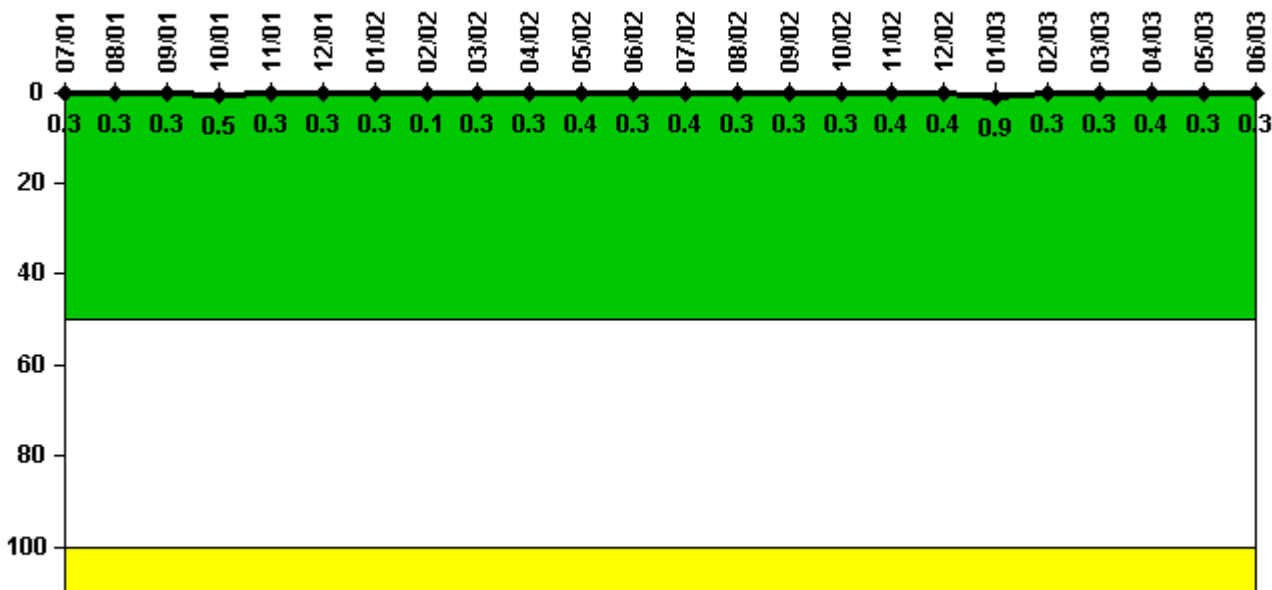
Notes

Reactor Coolant System Activity	7/01	8/01	9/01	10/01	11/01	12/01	1/02	2/02	3/02	4/02	5/02	6/02
Maximum activity	0.005040	0.005940	0.005670	0.005640	0.005650	0.005870	0.005610	0.005930	0.015200	0.001890	0.002180	0.002270
Technical specification limit	1.0	1.0	1.0	1.0	1.0	1.0	1.0	1.0	1.0	1.0	1.0	1.0
Indicator value	0.5	0.6	0.6	0.6	0.6	0.6	0.6	0.6	1.5	0.2	0.2	0.2

Reactor Coolant System Activity	7/02	8/02	9/02	10/02	11/02	12/02	1/03	2/03	3/03	4/03	5/03	6/03
Maximum activity	0.002460	0.002440	0.002570	0.002580	0.002680	0.002780	0.002890	0.002810	0.002970	0.003260	0.003300	0.003350
Technical specification limit	1.0	1.0	1.0	1.0	1.0	1.0	1.0	1.0	1.0	1.0	1.0	1.0
Indicator value	0.2	0.2	0.3	0.3	0.3	0.3	0.3	0.3	0.3	0.3	0.3	0.3

Licensee Comments: none

Reactor Coolant System Leakage



Thresholds: White > 50.0 Yellow > 100.0

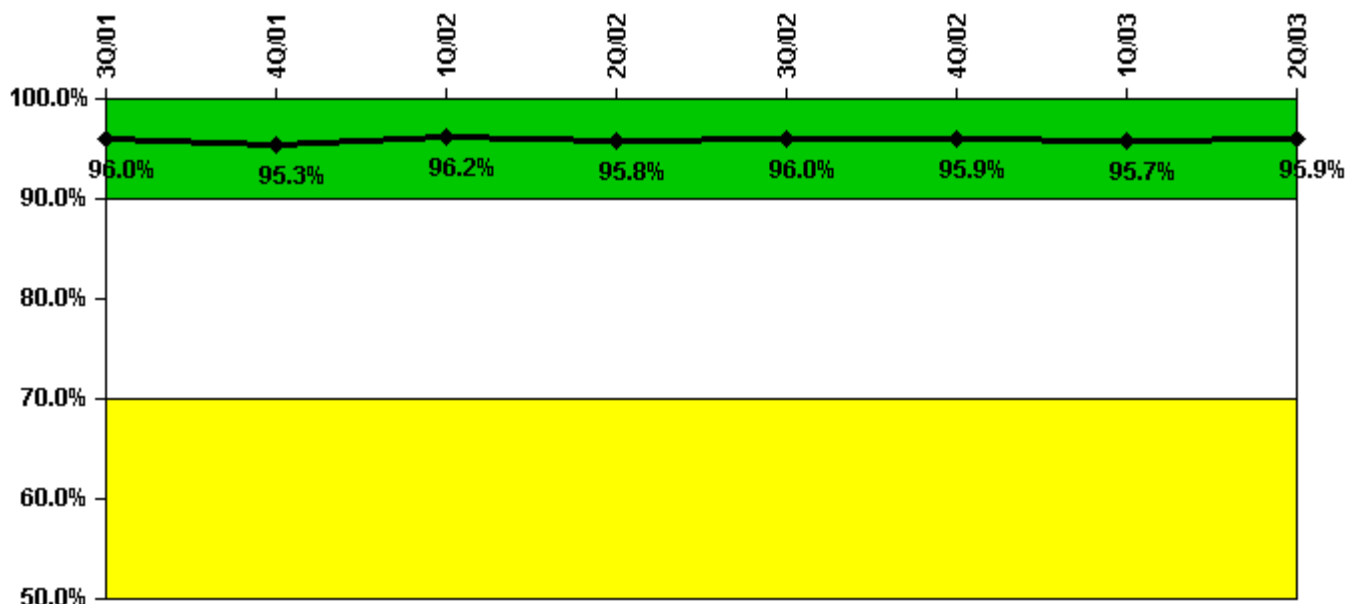
Notes

Reactor Coolant System Leakage	7/01	8/01	9/01	10/01	11/01	12/01	1/02	2/02	3/02	4/02	5/02	6/02
Maximum leakage	0.028	0.028	0.028	0.051	0.028	0.027	0.033	0.014	0.026	0.030	0.040	0.027
Technical specification limit	10.0	10.0	10.0	10.0	10.0	10.0	10.0	10.0	10.0	10.0	10.0	10.0
Indicator value	0.3	0.3	0.3	0.5	0.3	0.3	0.3	0.1	0.3	0.3	0.4	0.3

Reactor Coolant System Leakage	7/02	8/02	9/02	10/02	11/02	12/02	1/03	2/03	3/03	4/03	5/03	6/03
Maximum leakage	0.039	0.028	0.028	0.028	0.040	0.036	0.089	0.033	0.028	0.038	0.028	0.027
Technical specification limit	10.0	10.0	10.0	10.0	10.0	10.0	10.0	10.0	10.0	10.0	10.0	10.0
Indicator value	0.4	0.3	0.3	0.3	0.4	0.4	0.9	0.3	0.3	0.4	0.3	0.3

Licensee Comments: none

Drill/Exercise Performance



Thresholds: White < 90.0% Yellow < 70.0%

Notes

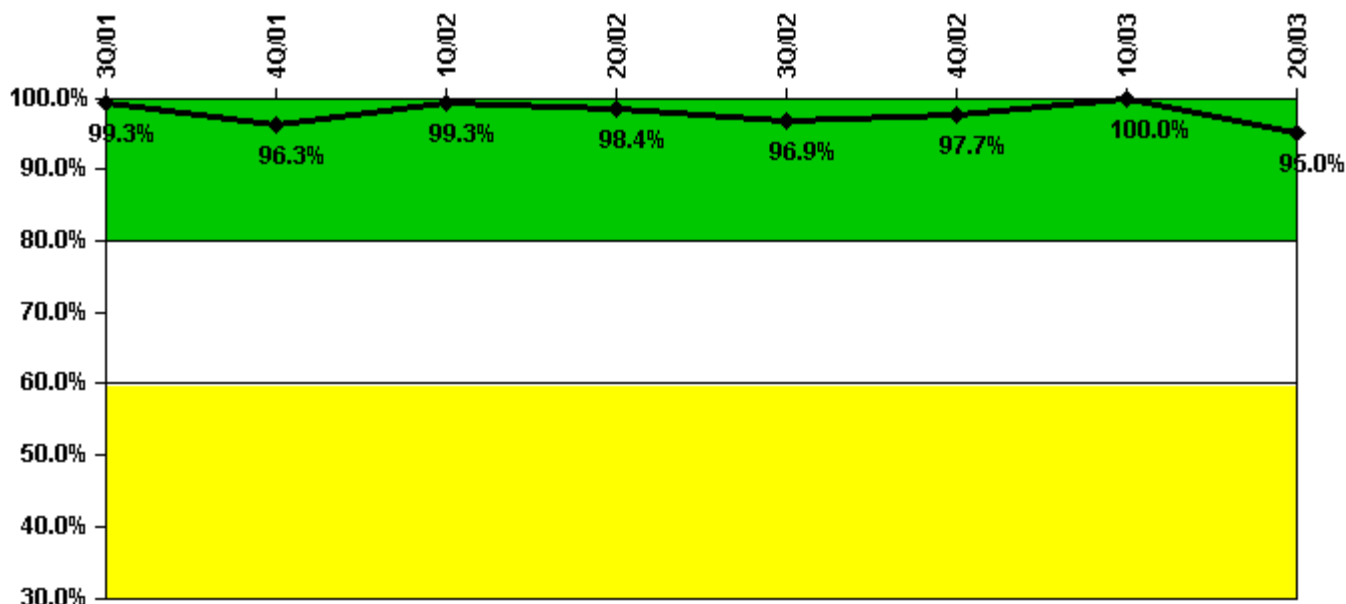
Drill/Exercise Performance	3Q/01	4Q/01	1Q/02	2Q/02	3Q/02	4Q/02	1Q/03	2Q/03
Successful opportunities	21.0	43.0	38.0	17.0	31.0	27.0	25.0	32.0
Total opportunities	22.0	46.0	38.0	18.0	34.0	28.0	26.0	32.0
Indicator value	96.0%	95.3%	96.2%	95.8%	96.0%	95.9%	95.7%	95.9%

Licensee Comments:

2Q/03: During a self assessment, the Waterford 3 Emergency Planning Department identified an error in the number of successful opportunities that were reported in March 2003 (1st Quarter 2003 data). Nine should have been reported instead of ten. This correction is being submitted with the 2nd quarter 2003 submittal and does not change the previous or current color of this indicator.

1Q/03: During a self assessment, the Waterford 3 Emergency Planning Department identified an error in the number of successful opportunities that were reported in March 2003. Nine should have been reported instead of ten. This correction is being submitted with the 2nd quarter 2003 submittal and does not change the previous or current color of this indicator.

ERO Drill Participation



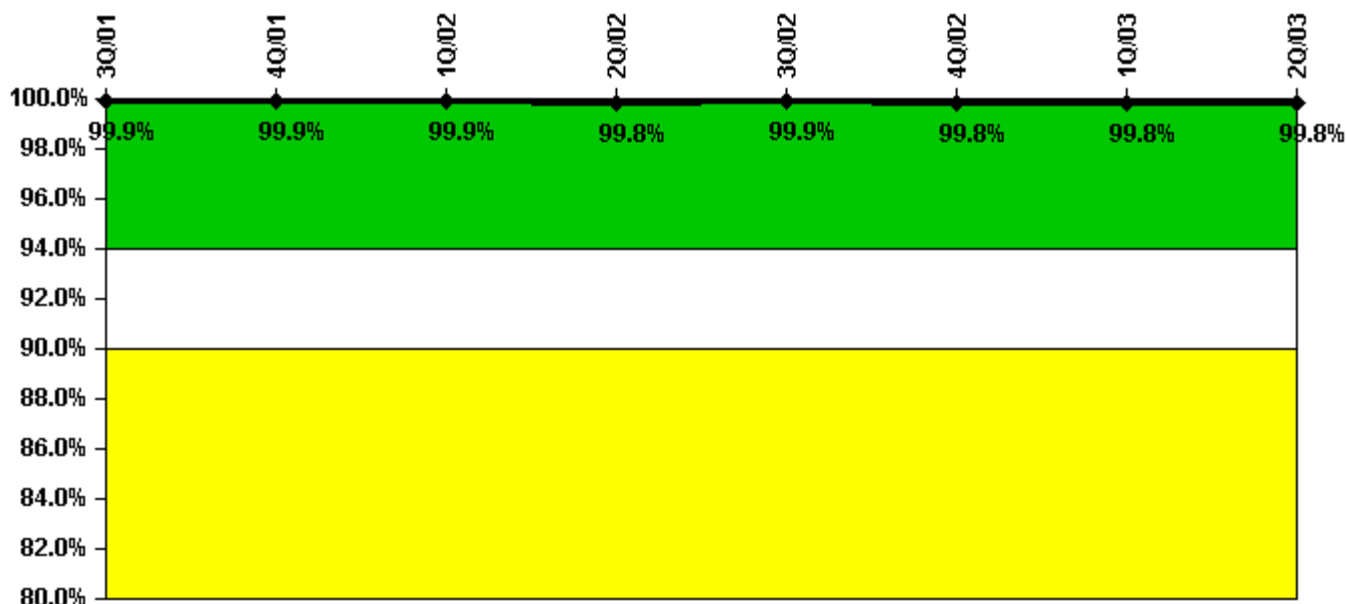
Thresholds: White < 80.0% Yellow < 60.0%

Notes

ERO Drill Participation	3Q/01	4Q/01	1Q/02	2Q/02	3Q/02	4Q/02	1Q/03	2Q/03
Participating Key personnel	135.0	130.0	139.0	125.0	127.0	126.0	130.0	133.0
Total Key personnel	136.0	135.0	140.0	127.0	131.0	129.0	130.0	140.0
Indicator value	99.3%	96.3%	99.3%	98.4%	96.9%	97.7%	100.0%	95.0%

Licensee Comments: none

Alert & Notification System



Thresholds: White < 94.0% Yellow < 90.0%

Notes

Alert & Notification System	3Q/01	4Q/01	1Q/02	2Q/02	3Q/02	4Q/02	1Q/03	2Q/03
Successful siren-tests	401	401	420	419	420	418	420	419
Total sirens-tests	402	402	420	420	420	420	420	420
Indicator value	99.9%	99.9%	99.9%	99.8%	99.9%	99.8%	99.8%	99.8%

Licensee Comments: none

Occupational Exposure Control Effectiveness



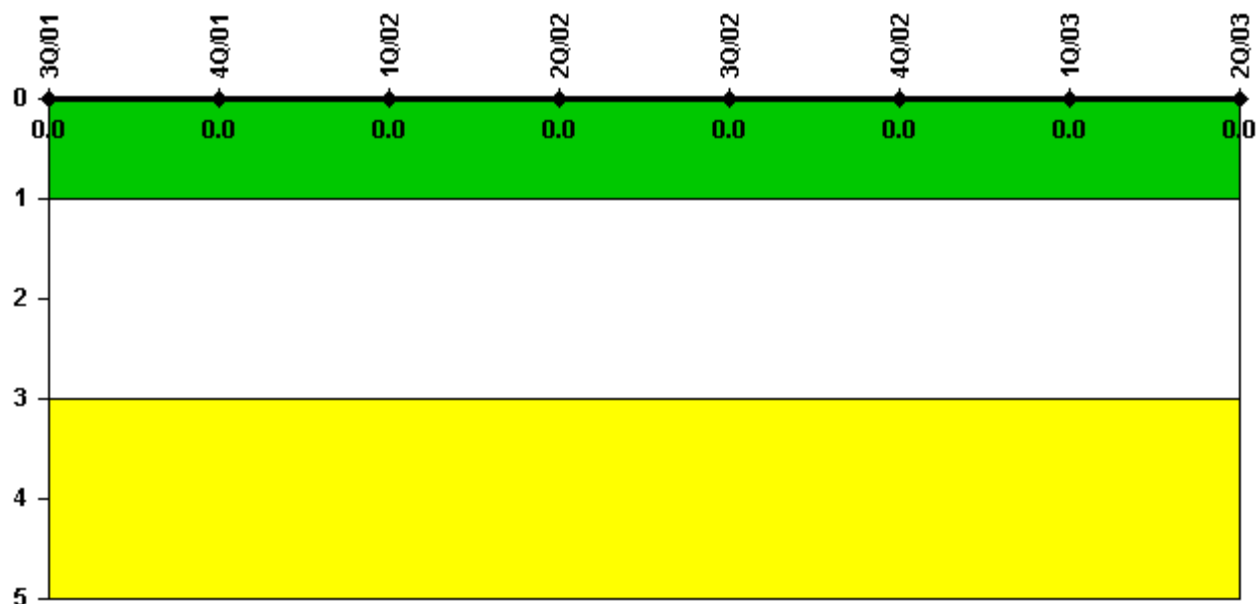
Thresholds: White > 2.0 Yellow > 5.0

Notes

Occupational Exposure Control Effectiveness	3Q/01	4Q/01	1Q/02	2Q/02	3Q/02	4Q/02	1Q/03	2Q/03
High radiation area occurrences	0	0	0	0	0	0	0	0
Very high radiation area occurrences	0	0	0	0	0	0	0	0
Unintended exposure occurrences	0	0	0	0	0	0	0	0
Indicator value	0	0	0	0	0	0	0	0

Licensee Comments: none

RETS/ODCM Radiological Effluent



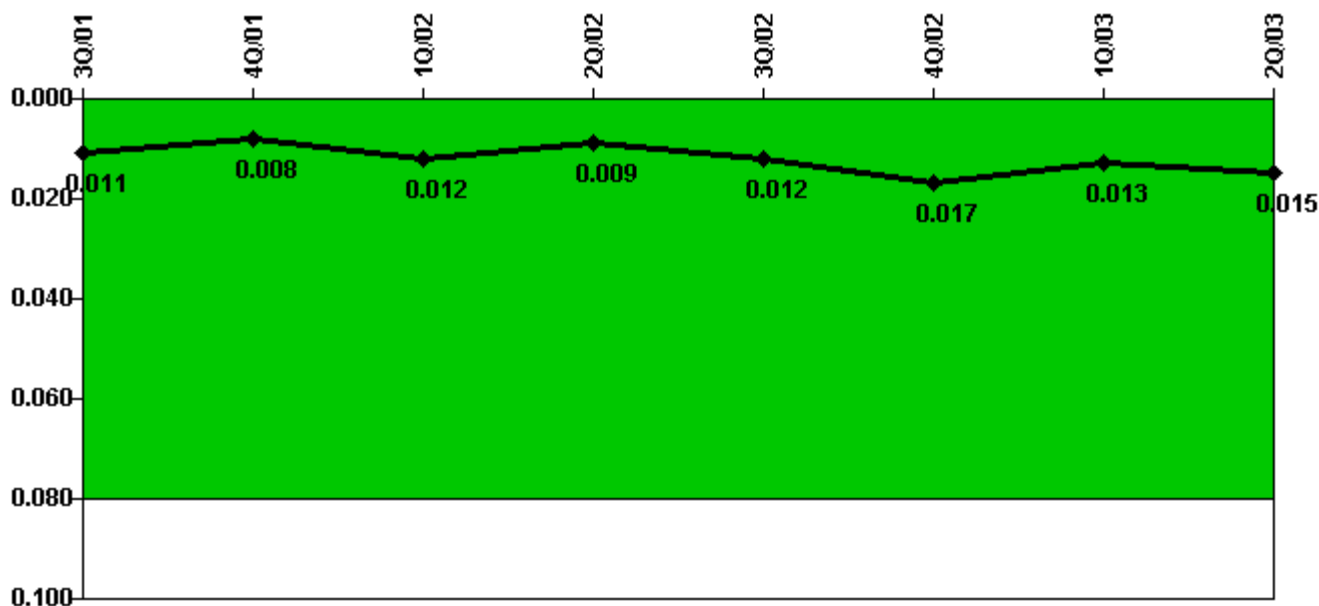
Thresholds: White > 1.0 Yellow > 3.0

Notes

RETS/ODCM Radiological Effluent	3Q/01	4Q/01	1Q/02	2Q/02	3Q/02	4Q/02	1Q/03	2Q/03
RETS/ODCM occurrences	0	0	0	0	0	0	0	0
Indicator value	0	0	0	0	0	0	0	0

Licensee Comments: none

Protected Area Security Performance Index



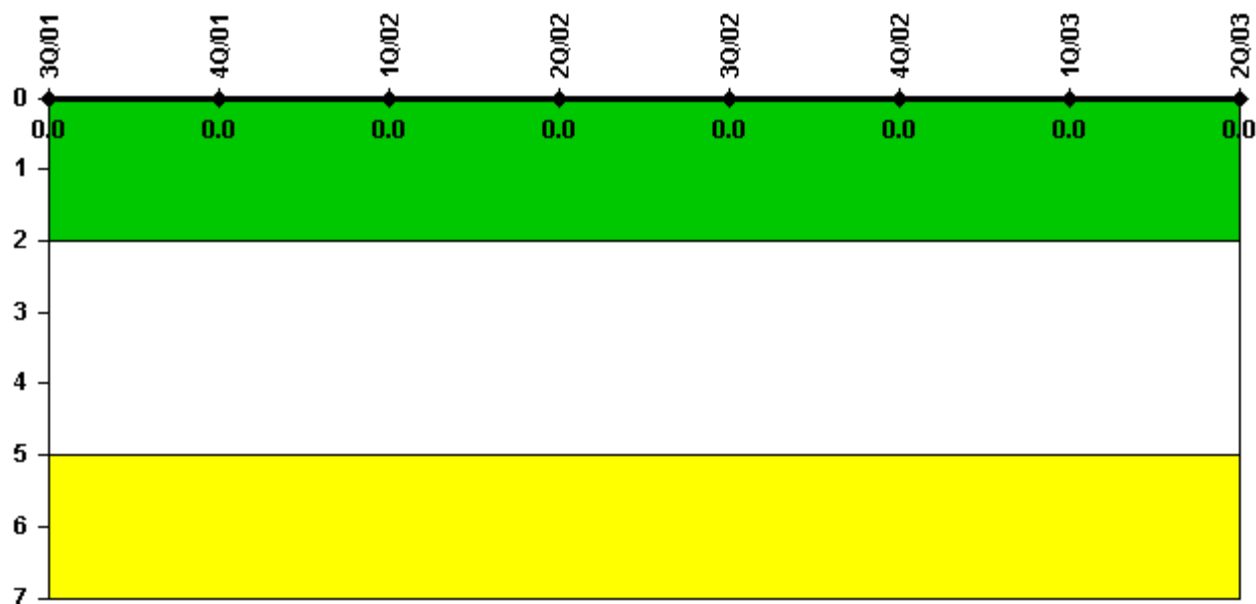
Thresholds: White > 0.080

Notes

Protected Area Security Performance Index	3Q/01	4Q/01	1Q/02	2Q/02	3Q/02	4Q/02	1Q/03	2Q/03
IDS compensatory hours	8.60	8.70	82.10	7.90	65.40	119.10	23.10	42.60
CCTV compensatory hours	31.3	14.8	14.3	0	36.8	0.3	0	1.4
IDS normalization factor	1.10	1.10	1.10	1.10	1.10	1.10	1.10	1.10
CCTV normalization factor	1.1	1.1	1.1	1.1	1.1	1.1	1.1	1.1
Index Value	0.011	0.008	0.012	0.009	0.012	0.017	0.013	0.015

Licensee Comments: none

Personnel Screening Program



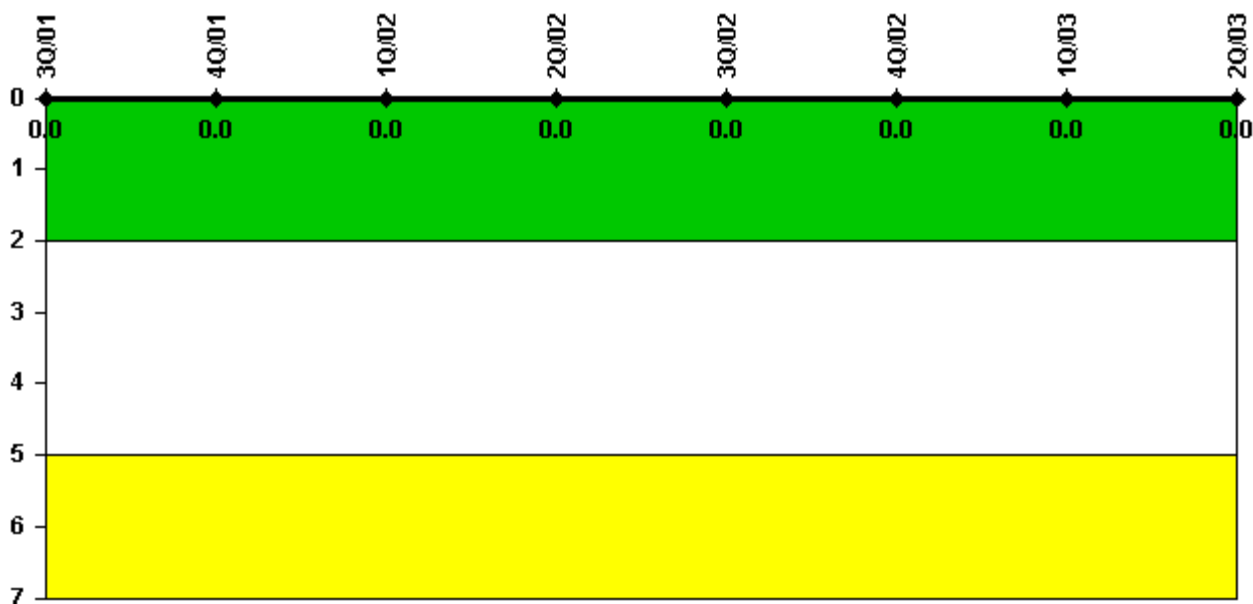
Thresholds: White > 2.0 Yellow > 5.0

Notes

Personnel Screening Program	3Q/01	4Q/01	1Q/02	2Q/02	3Q/02	4Q/02	1Q/03	2Q/03
Program failures	0	0	0	0	0	0	0	0
Indicator value	0	0	0	0	0	0	0	0

Licensee Comments: none

FFD/Personnel Reliability



Thresholds: White > 2.0 Yellow > 5.0

Notes

FFD/Personnel Reliability	3Q/01	4Q/01	1Q/02	2Q/02	3Q/02	4Q/02	1Q/03	2Q/03
Program Failures	0	0	0	0	0	0	0	0
Indicator value	0	0	0	0	0	0	0	0

Licensee Comments: none

▲ [PI Summary](#) | [Inspection Findings Summary](#) | [Reactor Oversight Process](#)

Last Modified: July 22, 2003