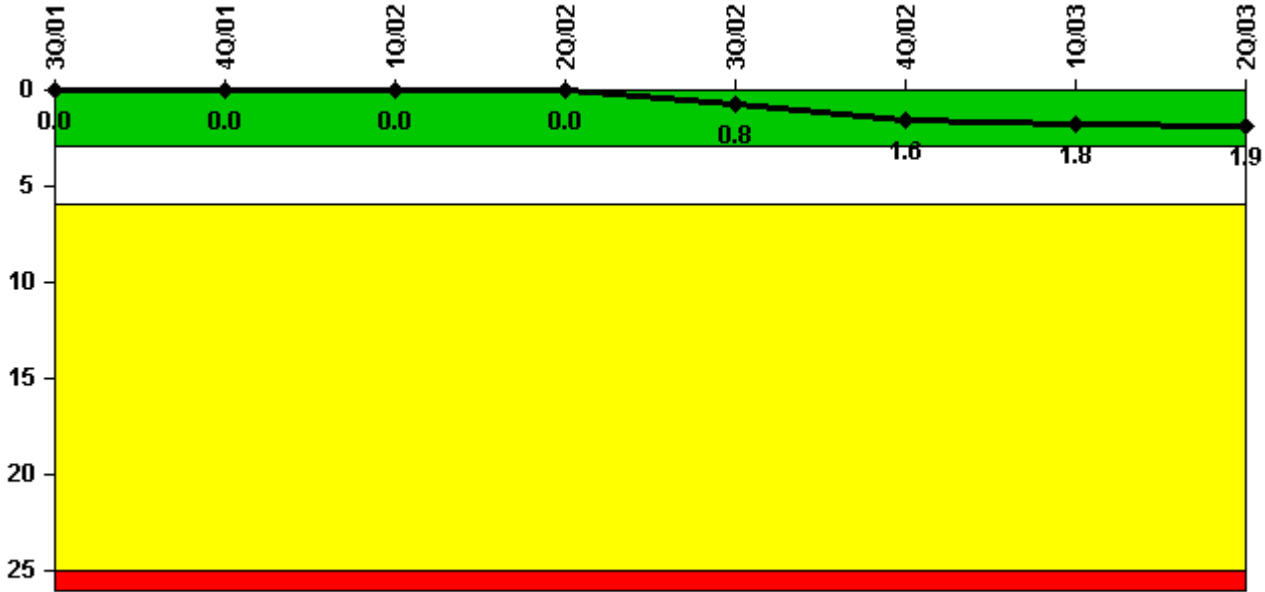


# Susquehanna 2

## 2Q/2003 Performance Indicators

Licensee's General Comments: none

### Unplanned Scrams per 7000 Critical Hrs



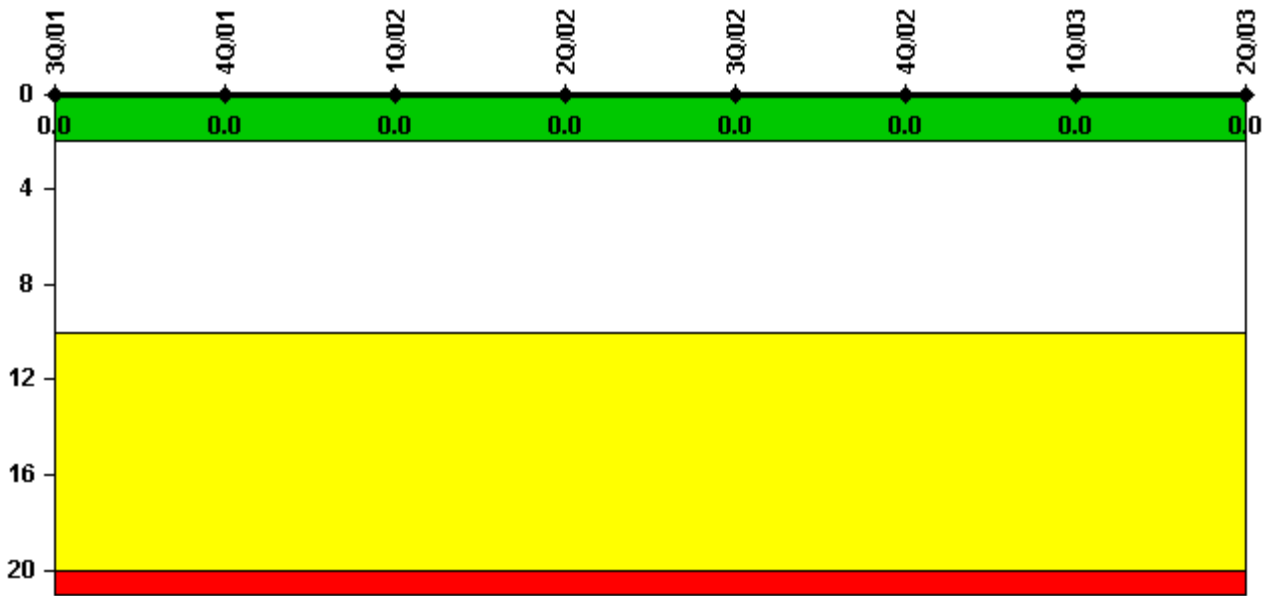
Thresholds: White > 3.0 Yellow > 6.0 Red > 25.0

### Notes

Unplanned Scrams per 7000 Critical Hrs	3Q/01	4Q/01	1Q/02	2Q/02	3Q/02	4Q/02	1Q/03	2Q/03
Unplanned scrams	0	0	0	0	1.0	1.0	0	0
Critical hours	2208.0	2209.0	2160.0	2183.0	2206.2	1943.2	1584.6	1744.8
Indicator value	0	0	0	0	0.8	1.6	1.8	1.9

Licensee Comments: none

### Scrams with Loss of Normal Heat Removal



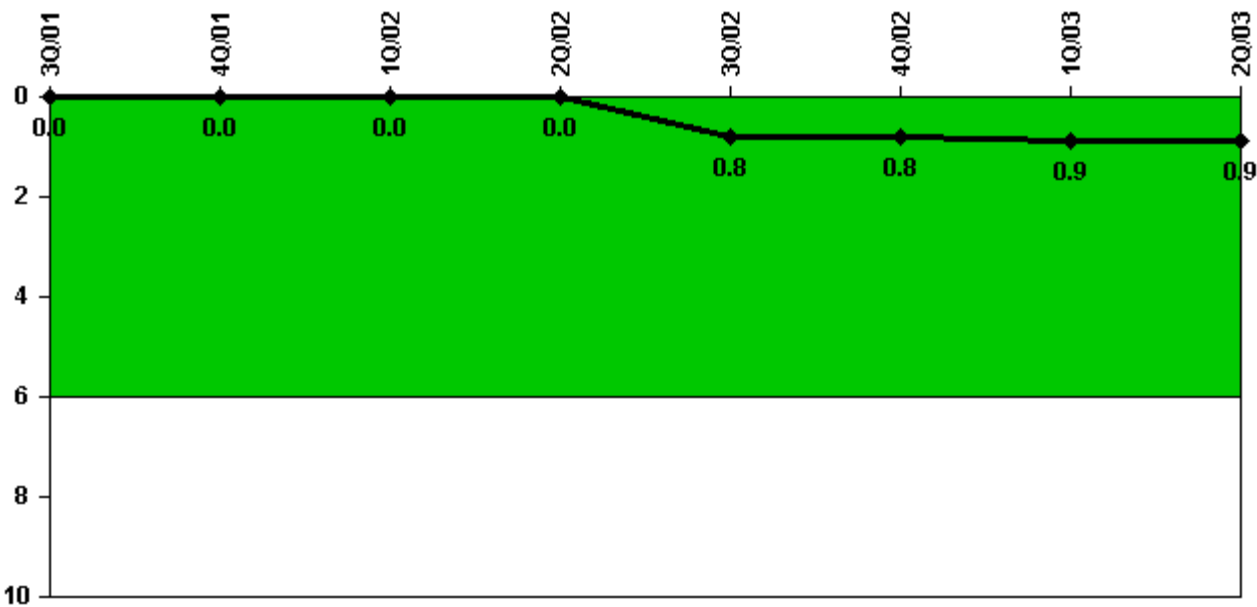
Thresholds: White > 2.0 Yellow > 10.0 Red > 20.0

#### Notes

Scrams with Loss of Normal Heat Removal	3Q/01	4Q/01	1Q/02	2Q/02	3Q/02	4Q/02	1Q/03	2Q/03
Scrams	0	0	0	0	0	0	0	0
Indicator value	0	0	0	0	0	0	0	0

Licensee Comments: none

### Unplanned Power Changes per 7000 Critical Hrs



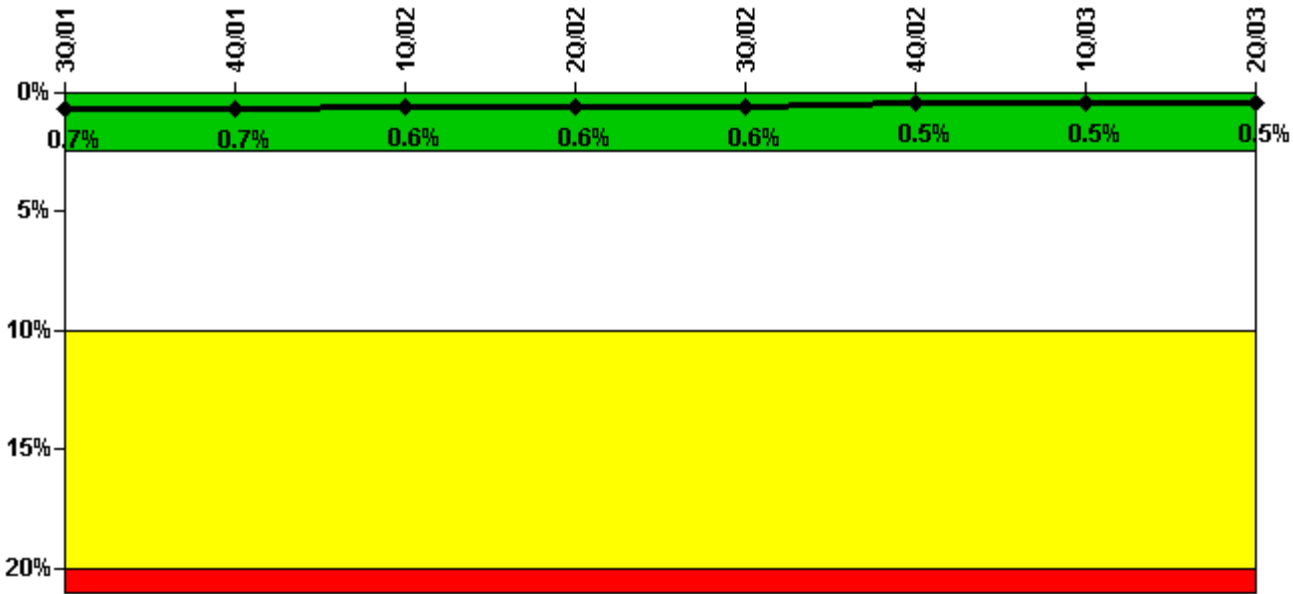
Thresholds: White > 6.0

#### Notes

Unplanned Power Changes per 7000 Critical Hrs	3Q/01	4Q/01	1Q/02	2Q/02	3Q/02	4Q/02	1Q/03	2Q/03
Unplanned power changes	0	0	0	0	1.0	0	0	0
Critical hours	2208.0	2209.0	2160.0	2183.0	2206.2	1943.2	1584.6	1744.8
Indicator value	0	0	0	0	0.8	0.8	0.9	0.9

Licensee Comments: none

### Safety System Unavailability, Emergency AC Power, >2EDG



Thresholds: White > 2.5% Yellow > 10.0% Red > 20.0%

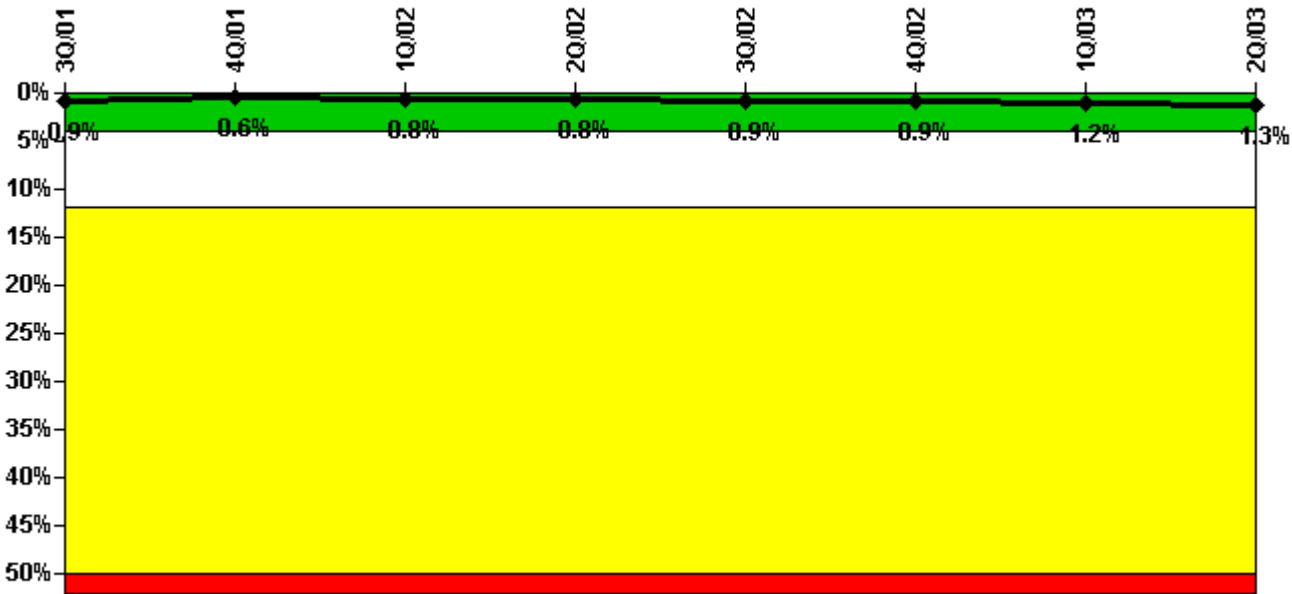
Notes

Safety System Unavailability, Emergency AC Power, >2EDG	3Q/01	4Q/01	1Q/02	2Q/02	3Q/02	4Q/02	1Q/03	2Q/03
<b>Train 1</b>								
Planned unavailable hours	0	23.10	1.00	0	1.90	0	0	7.30
Unplanned unavailable hours	0	0	2.00	0	0	9.10	1.70	12.80
Fault exposure hours	0	0	0	0	0	0	0	0
Effective Reset hours	0	0	0	0	0	0	0	0
Required hours	2208.00	2208.00	2160.00	2184.00	2208.00	2208.00	2160.00	2184.00
<b>Train 2</b>								
Planned unavailable hours	0	16.40	0.70	0.70	0	7.60	83.50	0
Unplanned unavailable hours	0	4.40	0	1.70	2.30	0	0.40	0
Fault exposure hours	0	0	0	0	0	0	0	0
Effective Reset hours	0	0	0	0	0	0	0	0
Required hours	2208.00	2208.00	2160.00	2184.00	2208.00	2208.00	2160.00	2184.00
<b>Train 3</b>								
Planned unavailable hours	79.70	0	1.10	0	0	0	0	0.90
Unplanned unavailable hours	0	0	2.00	0	0	0	0	25.00
Fault exposure hours	0	0	0	0	0	0	0	0
Effective Reset hours	0	0	0	0	0	0	0	0
Required hours	2208.00	2208.00	2160.00	2184.00	2208.00	2208.00	2160.00	2184.00
<b>Train 4</b>								
Planned unavailable hours	1.60	0	1.00	39.00	0	0	0	0
Unplanned unavailable hours	0	0	0	0	0	0	0	0
Fault exposure hours	0	0	0	0	0	0	0	0
Effective Reset hours	0	0	0	0	0	0	0	0
Required hours	2208.00	2208.00	2160.00	2184.00	2208.00	2208.00	2160.00	2184.00

Indicator value	0.7%	0.7%	0.6%	0.6%	0.6%	0.5%	0.5%	0.5%

Licensee Comments: none

### Safety System Unavailability, High Pressure Injection System (HPCI)



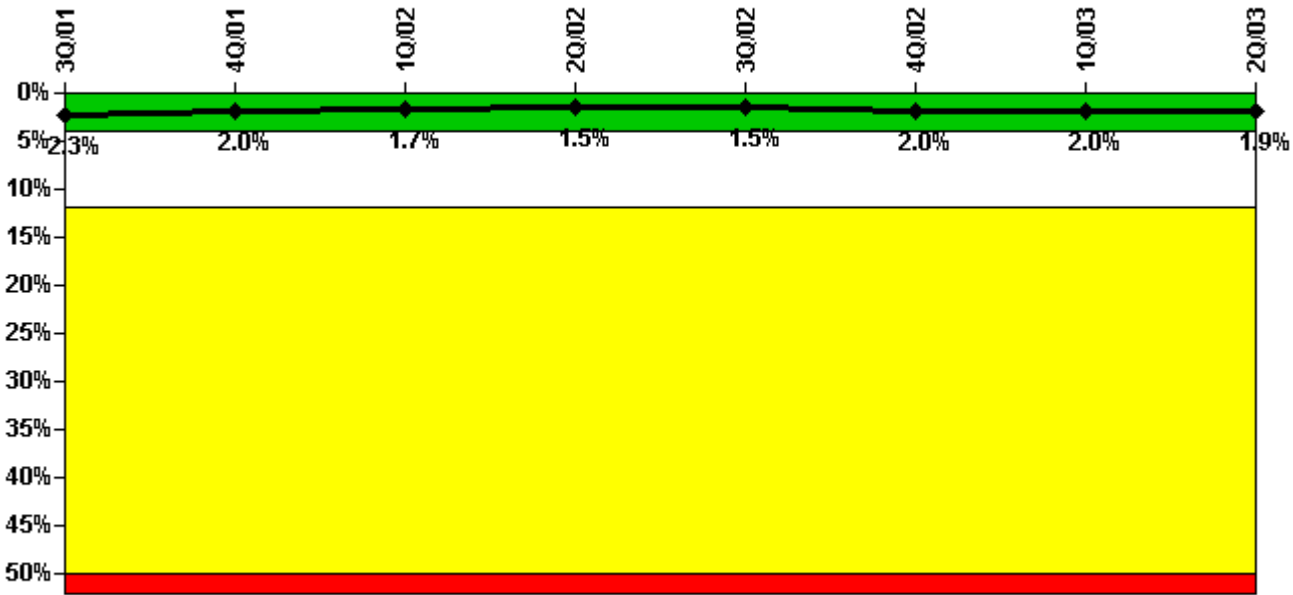
Thresholds: White > 4.0% Yellow > 12.0% Red > 50.0%

#### Notes

Safety System Unavailability, High Pressure Injection System (HPCI)	3Q/01	4Q/01	1Q/02	2Q/02	3Q/02	4Q/02	1Q/03	2Q/03
Train 1								
Planned unavailable hours	1.67	1.52	66.32	9.52	40.03	3.22	76.77	25.10
Unplanned unavailable hours	0	0	0	0	0	0	0	0
Fault exposure hours	0	0	0	0	0	0	0	0
Effective Reset hours	0	0	0	0	0	0	0	0
Required hours	2208.00	2208.00	2160.00	2184.00	2208.00	1980.00	1586.60	1732.20
Indicator value	0.9%	0.6%	0.8%	0.8%	0.9%	0.9%	1.2%	1.3%

Licensee Comments: none

### Safety System Unavailability, Heat Removal System (RCIC)



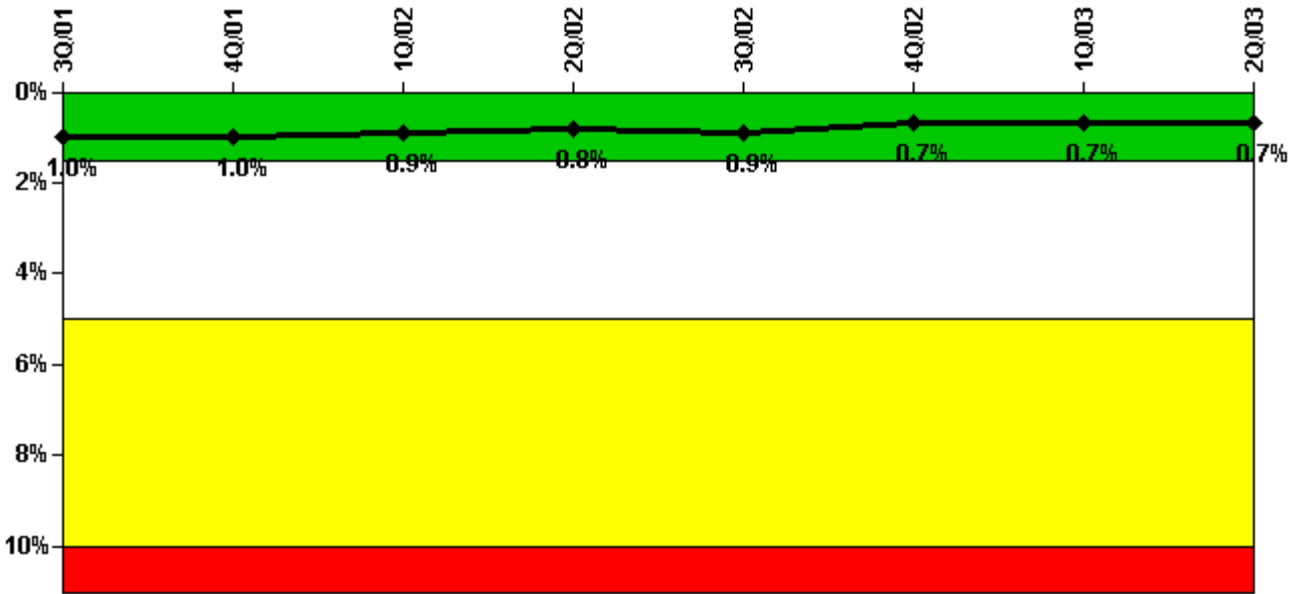
Thresholds: White > 4.0% Yellow > 12.0% Red > 50.0%

#### Notes

Safety System Unavailability, Heat Removal System (RCIC)	3Q/01	4Q/01	1Q/02	2Q/02	3Q/02	4Q/02	1Q/03	2Q/03
Train 1								
Planned unavailable hours	0.50	7.67	6.50	0.50	0.50	128.66	12.18	11.42
Unplanned unavailable hours	0	0	0	0	0	0	0	0.10
Fault exposure hours	0	0	0	0	0	0	0	0
Effective Reset hours	0	0	0	0	0	0	0	0
Required hours	2208.00	2208.00	2160.00	2184.00	2208.00	1980.10	1586.60	1732.20
Indicator value	2.3%	2.0%	1.7%	1.5%	1.5%	2.0%	2.0%	1.9%

Licensee Comments: none

### Safety System Unavailability, Residual Heat Removal System



Thresholds: White > 1.5% Yellow > 5.0% Red > 10.0%

Notes

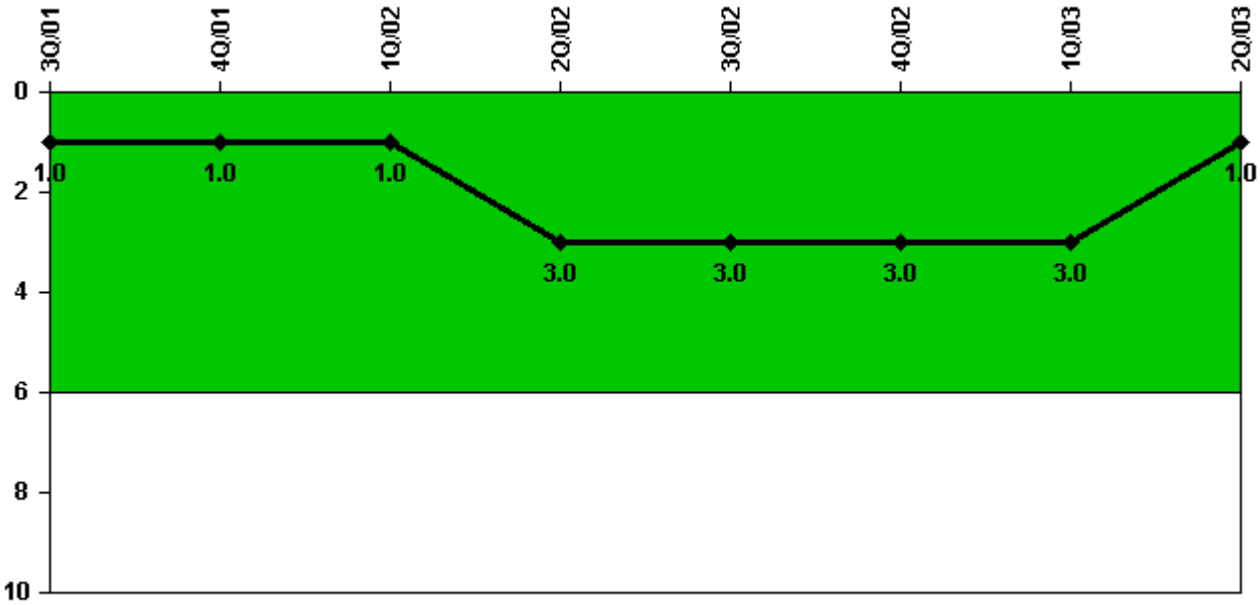
Safety System Unavailability, Residual Heat Removal System	3Q/01	4Q/01	1Q/02	2Q/02	3Q/02	4Q/02	1Q/03	2Q/03
<b>Train 1</b>								
Planned unavailable hours	10.33	9.07	0	0	12.60	0	21.58	0
Unplanned unavailable hours	0	0	0	0	0	0	19.53	0
Fault exposure hours	0	0	0	0	0	0	0	0
Effective Reset hours	0	0	0	0	0	0	0	0
Required hours	2208.00	2209.00	2160.00	2184.00	2208.00	2208.00	2160.00	2184.00
<b>Train 2</b>								
Planned unavailable hours	4.33	12.30	0	3.73	28.27	0	0	8.00
Unplanned unavailable hours	0	0	0	0	0	0	0	0
Fault exposure hours	0	0	0	0	0	0	0	0
Effective Reset hours	0	0	0	0	0	0	0	0
Required hours	2208.00	2209.00	2160.00	2184.00	2208.00	2208.00	2160.00	2184.00
<b>Indicator value</b>	<b>1.0%</b>	<b>1.0%</b>	<b>0.9%</b>	<b>0.8%</b>	<b>0.9%</b>	<b>0.7%</b>	<b>0.7%</b>	<b>0.7%</b>

Licensee Comments:

2Q/03: An existing design deficiency was identified during an NRC inspection of the Residual Heat Removal (RHR) system in May 2003. Specifically, the plant design did not allow for direct recovery of a division of RHR following a Loss of Offsite Power (LOOP) if the LOOP occurred while RHR was in Suppression Pool Cooling (SPC) mode. Details of the issue are included in NRC Inspection Report 50-387/03-006 & 50-388/03-006. In accordance with NEI 99-02 rev 2, page 33 (reporting of Equipment Unavailability due to Design Deficiencies that are not capable of being discovered during normal surveillance testing) fault exposure hours due to this discovery should be reported in the PI comment field. The fault exposure hours are not included (i.e. specifically excluded) from the performance indicator calculation. Therefore, the Susquehanna RHR fault exposure time for the last three years

to be reported is: Unit 1 - 576.83 hrs Unit 2 - 582.52 hrs

### Safety System Functional Failures (BWR)



Thresholds: White > 6.0

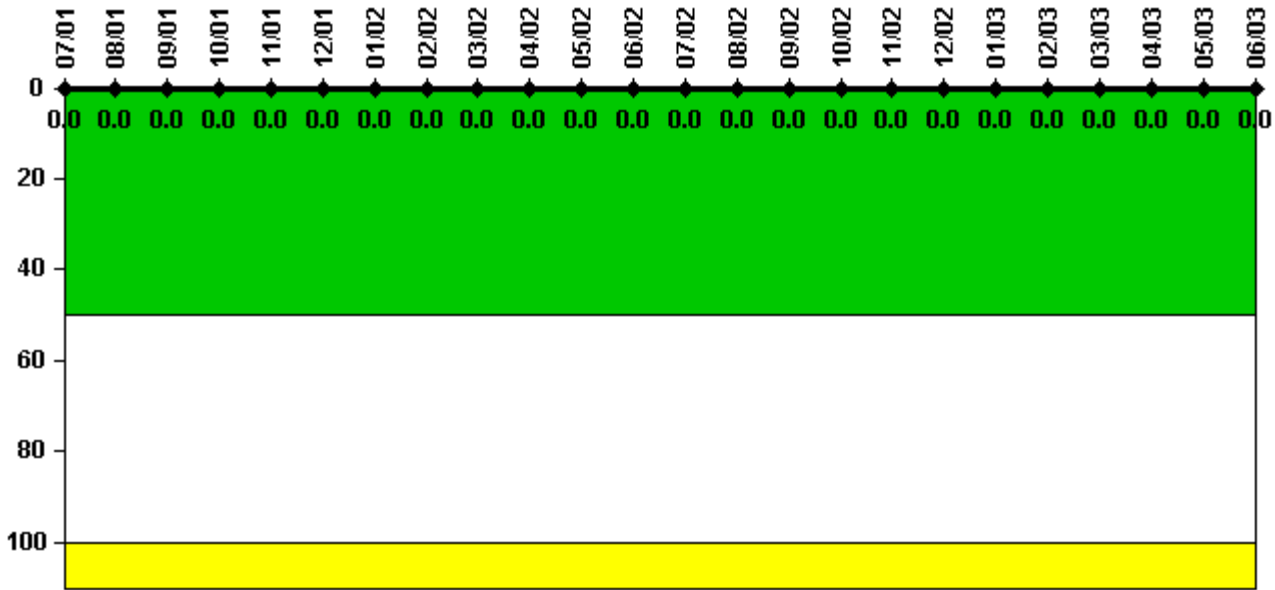
#### Notes

Safety System Functional Failures (BWR)	3Q/01	4Q/01	1Q/02	2Q/02	3Q/02	4Q/02	1Q/03	2Q/03
Safety System Functional Failures	0	0	0	3	0	0	0	1
Indicator value	1	1	1	3	3	3	3	1

Licensee Comments: none



### Reactor Coolant System Activity



Thresholds: White > 50.0 Yellow > 100.0

**Notes**

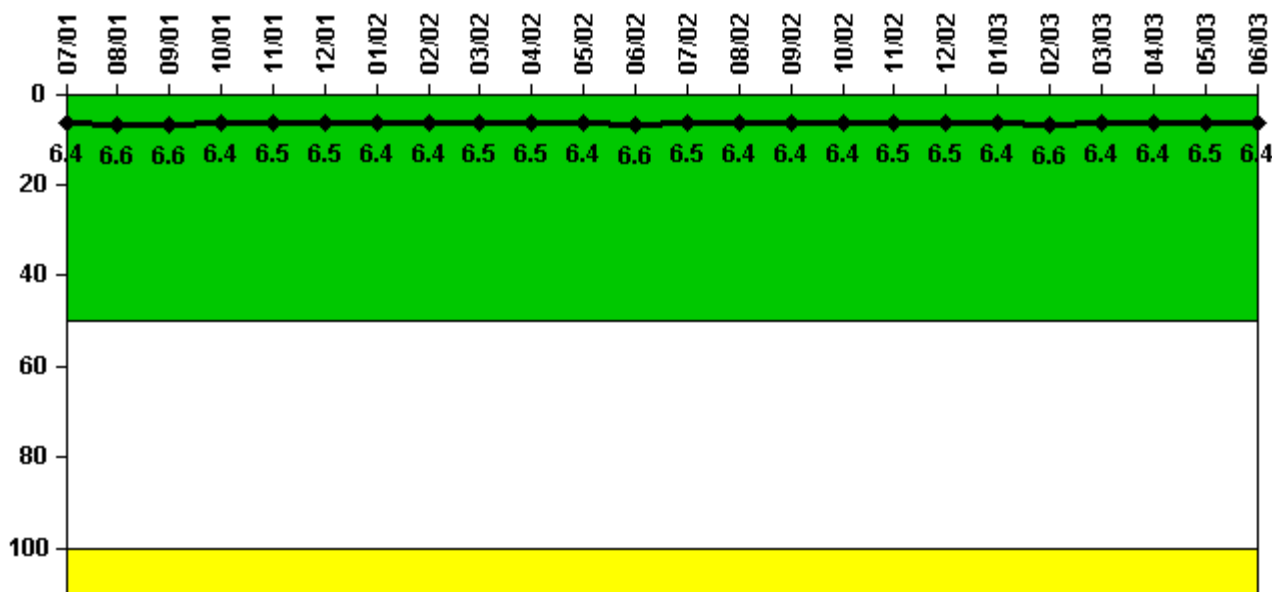
Reactor Coolant System Activity	7/01	8/01	9/01	10/01	11/01	12/01	1/02	2/02	3/02	4/02	5/02	6/02
Maximum activity	0.000004	0.000004	0.000006	0.000007	0.000006	0.000004	0.000006	0.000007	0.000006	0.000006	0.000005	0.000004
Technical specification limit	0.2	0.2	0.2	0.2	0.2	0.2	0.2	0.2	0.2	0.2	0.2	0.2
Indicator value	0	0	0	0	0	0	0	0	0	0	0	0

Reactor Coolant System Activity	7/02	8/02	9/02	10/02	11/02	12/02	1/03	2/03	3/03	4/03	5/03	6/03
Maximum activity	0.000007	0.000004	0.000004	0.000003	0.000004	0.000003	0.000005	0.000005	0.000007	0.000002	0.000003	0.000005
Technical specification limit	0.2	0.2	0.2	0.2	0.2	0.2	0.2	0.2	0.2	0.2	0.2	0.2
Indicator value	0	0	0	0	0	0	0	0	0	0	0	0

Licensee Comments: none

### Reactor Coolant System Leakage



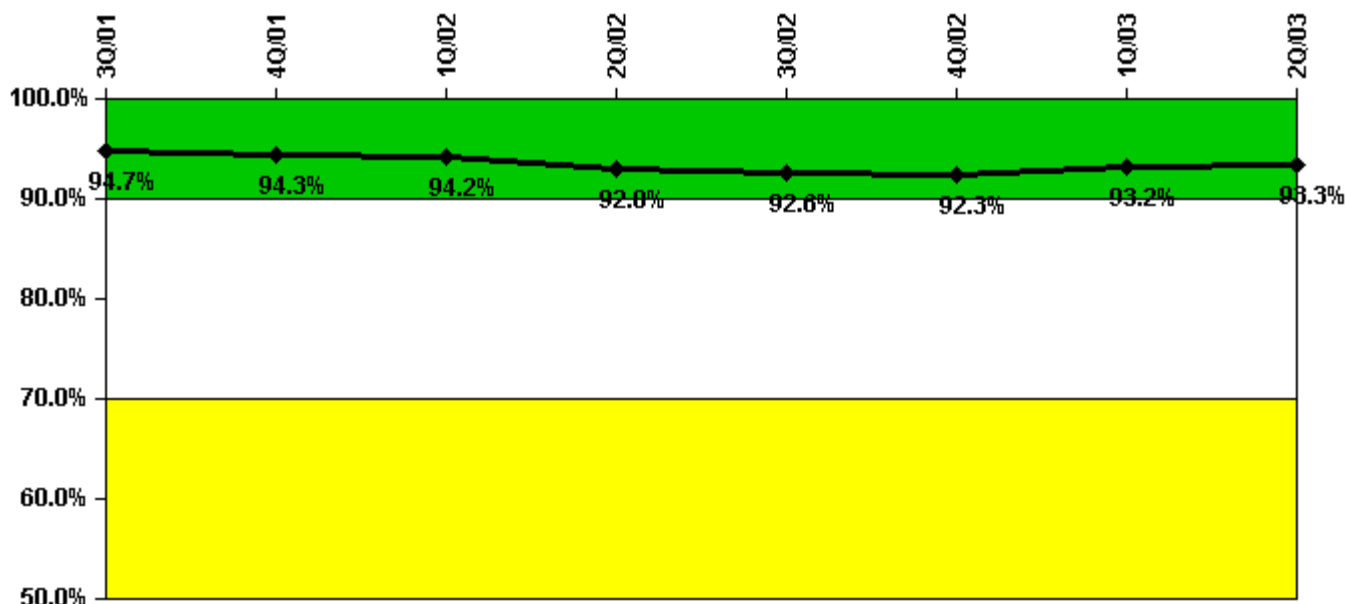
Thresholds: White > 50.0 Yellow > 100.0

#### Notes

Reactor Coolant System Leakage	7/01	8/01	9/01	10/01	11/01	12/01	1/02	2/02	3/02	4/02	5/02	6/02
Maximum leakage	1.600	1.640	1.640	1.610	1.620	1.620	1.610	1.610	1.620	1.630	1.600	1.650
Technical specification limit	25.0	25.0	25.0	25.0	25.0	25.0	25.0	25.0	25.0	25.0	25.0	25.0
Indicator value	6.4	6.6	6.6	6.4	6.5	6.5	6.4	6.4	6.5	6.5	6.4	6.6
Reactor Coolant System Leakage	7/02	8/02	9/02	10/02	11/02	12/02	1/03	2/03	3/03	4/03	5/03	6/03
Maximum leakage	1.620	1.600	1.600	1.600	1.620	1.620	1.590	1.650	1.600	1.590	1.630	1.590
Technical specification limit	25.0	25.0	25.0	25.0	25.0	25.0	25.0	25.0	25.0	25.0	25.0	25.0
Indicator value	6.5	6.4	6.4	6.4	6.5	6.5	6.4	6.6	6.4	6.4	6.5	6.4

Licensee Comments: none

### Drill/Exercise Performance



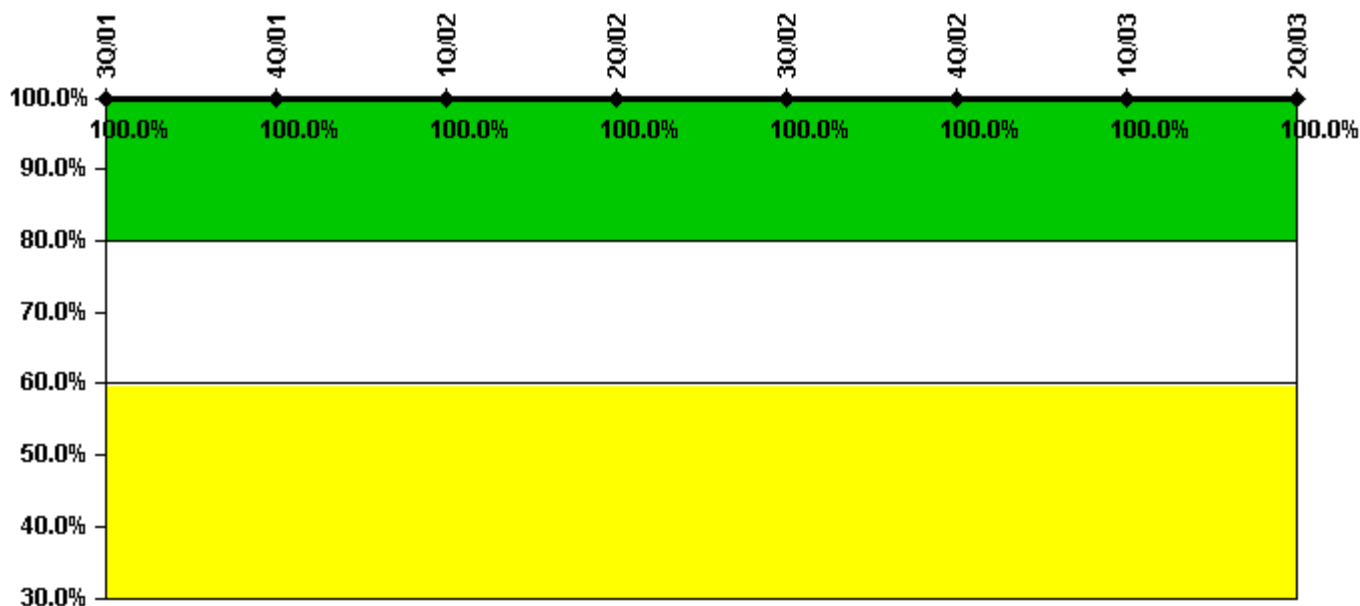
Thresholds: White < 90.0% Yellow < 70.0%

#### Notes

Drill/Exercise Performance	3Q/01	4Q/01	1Q/02	2Q/02	3Q/02	4Q/02	1Q/03	2Q/03
Successful opportunities	46.0	59.0	0	6.0	10.0	10.0	34.0	15.0
Total opportunities	49.0	63.0	0	10.0	10.0	10.0	35.0	16.0
Indicator value	94.7%	94.3%	94.2%	92.8%	92.6%	92.3%	93.2%	93.3%

Licensee Comments: none

### ERO Drill Participation



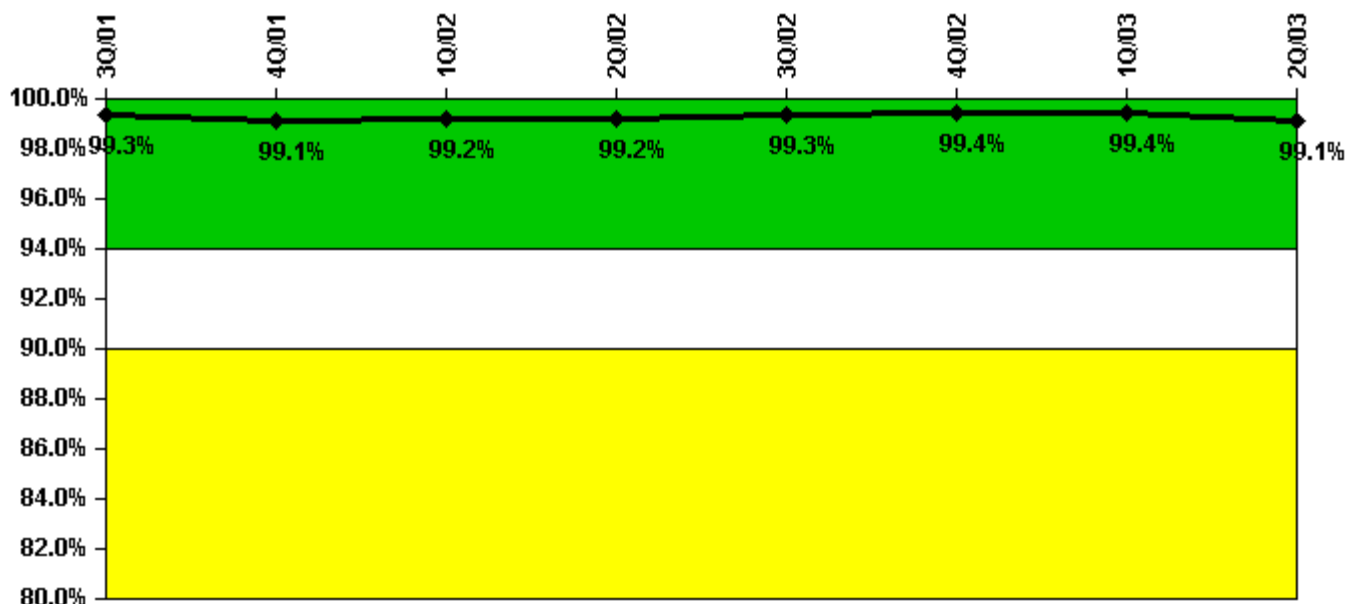
Thresholds: White < 80.0% Yellow < 60.0%

#### Notes

ERO Drill Participation	3Q/01	4Q/01	1Q/02	2Q/02	3Q/02	4Q/02	1Q/03	2Q/03
Participating Key personnel	101.0	120.0	121.0	120.0	116.0	112.0	118.0	71.0
Total Key personnel	101.0	120.0	121.0	120.0	116.0	112.0	118.0	71.0
Indicator value	100.0%	100.0%	100.0%	100.0%	100.0%	100.0%	100.0%	100.0%

Licensee Comments: none

### Alert & Notification System



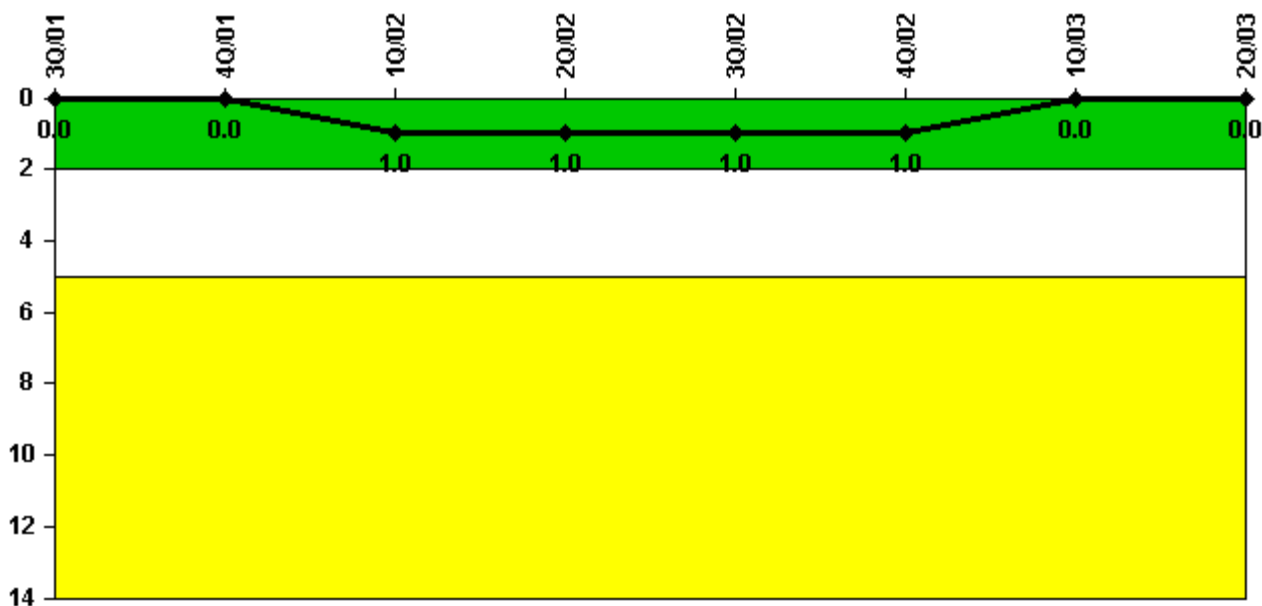
Thresholds: White < 94.0% Yellow < 90.0%

#### Notes

Alert & Notification System	3Q/01	4Q/01	1Q/02	2Q/02	3Q/02	4Q/02	1Q/03	2Q/03
Successful siren-tests	775	887	782	889	780	889	781	990
Total sirens-tests	784	896	784	896	784	896	784	1008
Indicator value	99.3%	99.1%	99.2%	99.2%	99.3%	99.4%	99.4%	99.1%

Licensee Comments: none

### Occupational Exposure Control Effectiveness



Thresholds: White > 2.0 Yellow > 5.0

#### Notes

Occupational Exposure Control Effectiveness	3Q/01	4Q/01	1Q/02	2Q/02	3Q/02	4Q/02	1Q/03	2Q/03
High radiation area occurrences	0	0	1	0	0	0	0	0
Very high radiation area occurrences	0	0	0	0	0	0	0	0
Unintended exposure occurrences	0	0	0	0	0	0	0	0
Indicator value	0	0	1	1	1	1	0	0

Licensee Comments: none

### RETS/ODCM Radiological Effluent



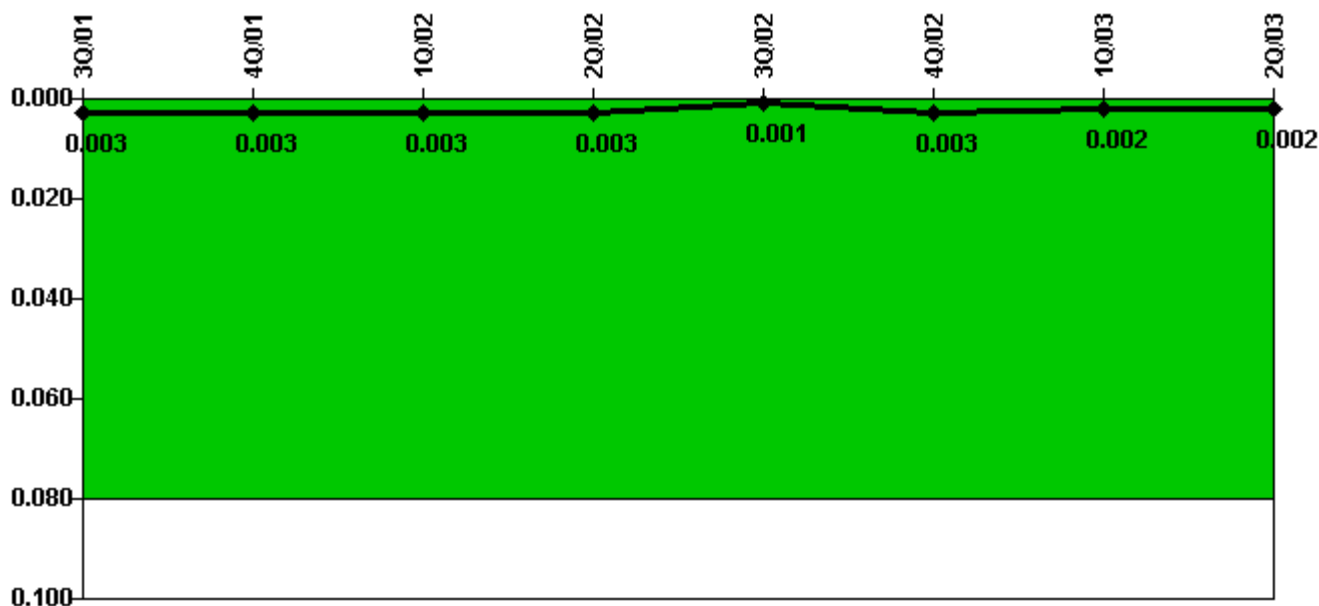
Thresholds: White > 1.0 Yellow > 3.0

#### Notes

RETS/ODCM Radiological Effluent	3Q/01	4Q/01	1Q/02	2Q/02	3Q/02	4Q/02	1Q/03	2Q/03
RETS/ODCM occurrences	0	0	0	0	0	0	0	0
Indicator value	0	0	0	0	0	0	0	0

Licensee Comments: none

### Protected Area Security Performance Index



Thresholds: White > 0.080

#### Notes

Protected Area Security Performance Index	3Q/01	4Q/01	1Q/02	2Q/02	3Q/02	4Q/02	1Q/03	2Q/03
IDS compensatory hours	87.20	0	21.00	1.10	16.70	62.50	19.10	0
CCTV compensatory hours	0	0	0	0	0	0	0	0
IDS normalization factor	2.30	2.30	2.30	2.30	2.30	2.30	2.30	2.30
CCTV normalization factor	1.7	1.7	1.7	1.7	1.7	1.7	1.7	1.7
Index Value	0.003	0.003	0.003	0.003	0.001	0.003	0.002	0.002

Licensee Comments: none



### Personnel Screening Program



Thresholds: White > 2.0 Yellow > 5.0

#### Notes

Personnel Screening Program	3Q/01	4Q/01	1Q/02	2Q/02	3Q/02	4Q/02	1Q/03	2Q/03
Program failures	0	0	0	0	0	0	0	0
Indicator value	0	0	0	0	0	0	0	0

Licensee Comments: none

### FFD/Personnel Reliability



Thresholds: White > 2.0 Yellow > 5.0

#### Notes

FFD/Personnel Reliability	3Q/01	4Q/01	1Q/02	2Q/02	3Q/02	4Q/02	1Q/03	2Q/03
Program Failures	0	0	0	0	0	0	0	0
Indicator value	0	0	0	0	0	0	0	0

Licensee Comments: none

▲ [PI Summary](#) | [Inspection Findings Summary](#) | [Reactor Oversight Process](#)

Last Modified: July 22, 2003