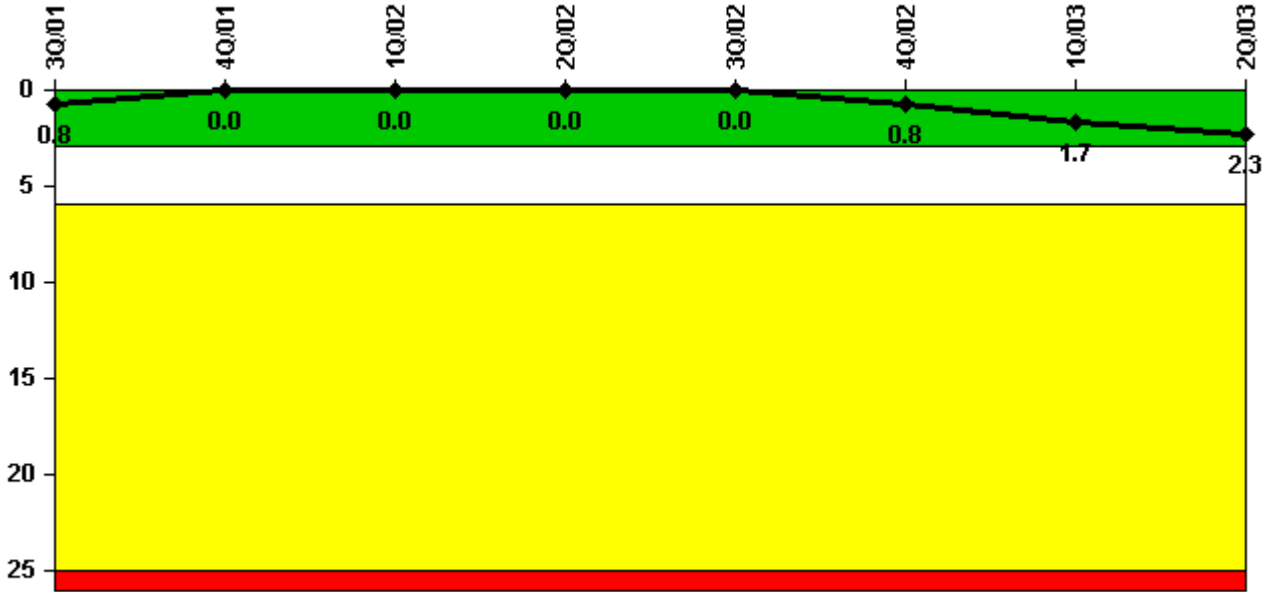


South Texas 1

2Q/2003 Performance Indicators

Licensee's General Comments: none

Unplanned Scrams per 7000 Critical Hrs



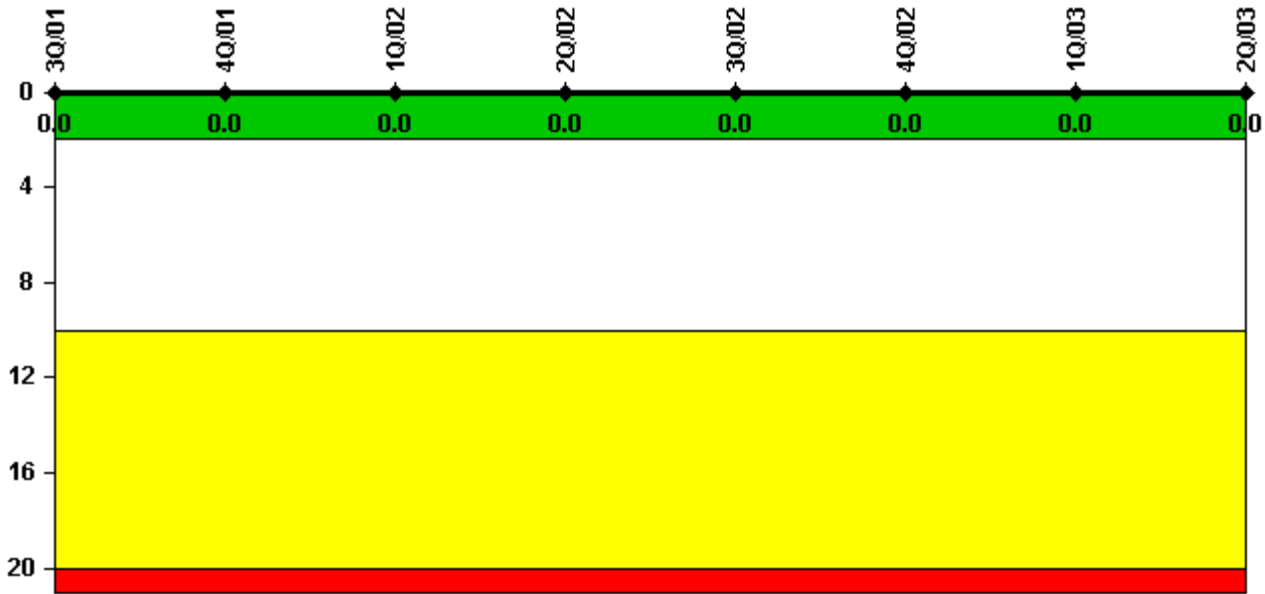
Thresholds: White > 3.0 Yellow > 6.0 Red > 25.0

Notes

Unplanned Scrams per 7000 Critical Hrs	3Q/01	4Q/01	1Q/02	2Q/02	3Q/02	4Q/02	1Q/03	2Q/03
Unplanned scrams	0	0	0	0	0	1.0	1.0	0
Critical hours	2208.0	1719.4	2160.0	2183.0	2208.0	2028.2	1970.3	0
Indicator value	0.8	0	0	0	0	0.8	1.7	2.3

Licensee Comments: none

Scrams with Loss of Normal Heat Removal



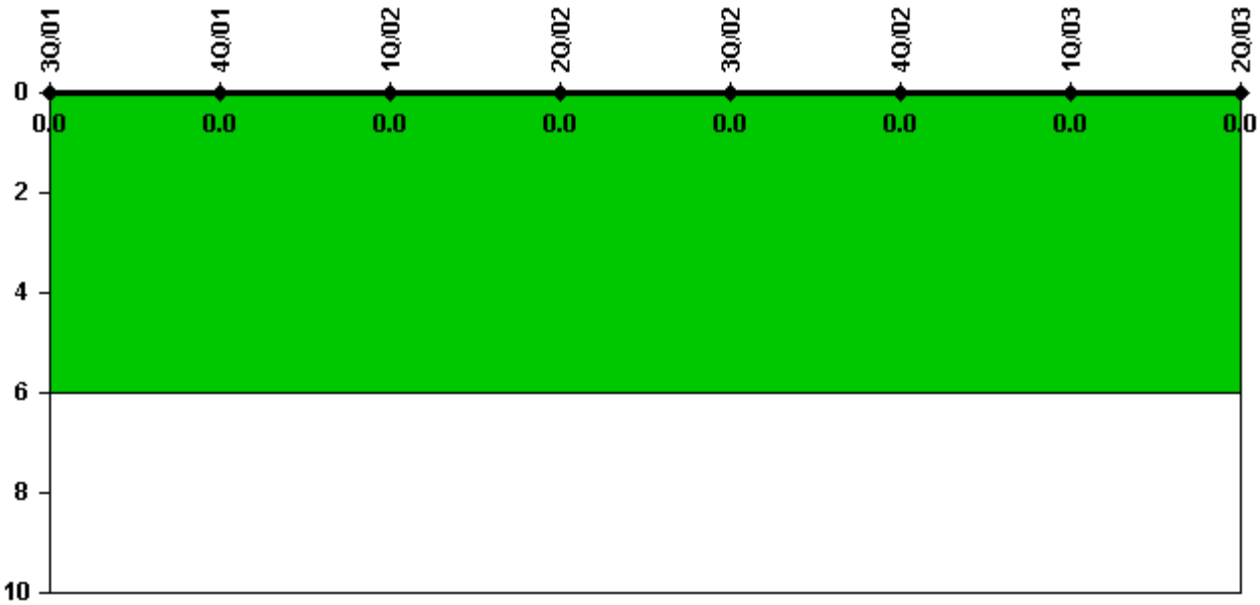
Thresholds: White > 2.0 Yellow > 10.0 Red > 20.0

Notes

Scrams with Loss of Normal Heat Removal	3Q/01	4Q/01	1Q/02	2Q/02	3Q/02	4Q/02	1Q/03	2Q/03
Scrams	0	0	0	0	0	0	0	0
Indicator value	0	0	0	0	0	0	0	0

Licensee Comments: none

Unplanned Power Changes per 7000 Critical Hrs



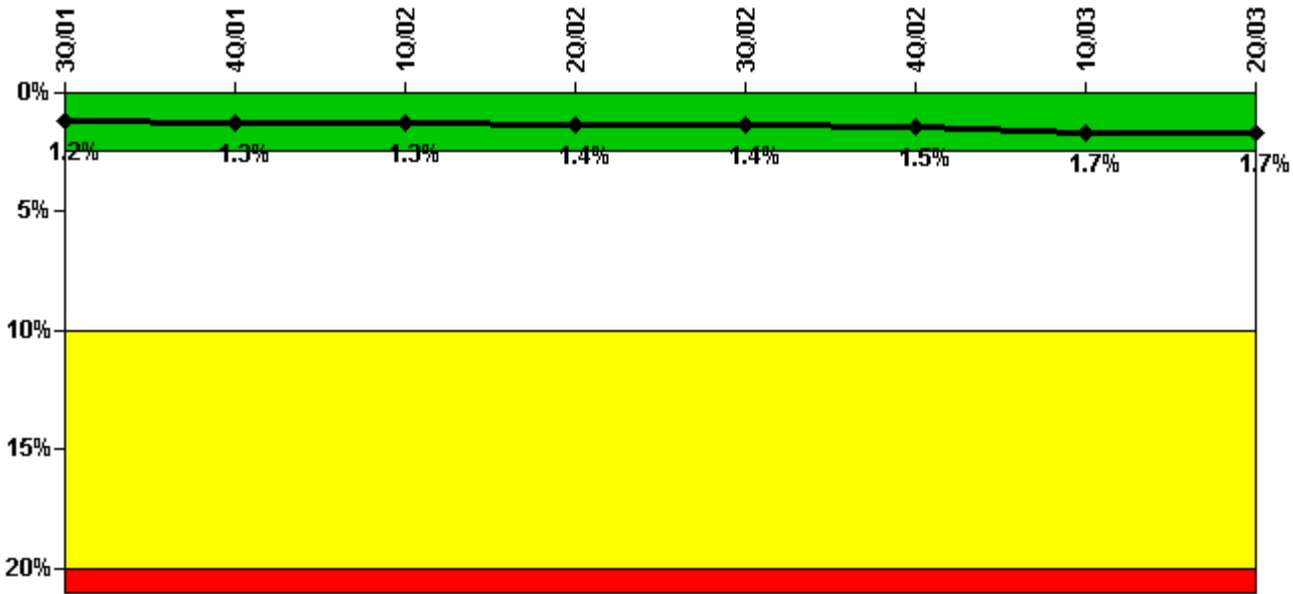
Thresholds: White > 6.0

Notes

Unplanned Power Changes per 7000 Critical Hrs	3Q/01	4Q/01	1Q/02	2Q/02	3Q/02	4Q/02	1Q/03	2Q/03
Unplanned power changes	0	0	0	0	0	0	0	0
Critical hours	2208.0	1719.4	2160.0	2183.0	2208.0	2028.2	1970.3	0
Indicator value	0	0	0	0	0	0	0	0

Licensee Comments: none

Safety System Unavailability, Emergency AC Power, >2EDG



Thresholds: White > 2.5% Yellow > 10.0% Red > 20.0%

Notes

Safety System Unavailability, Emergency AC Power, >2EDG	3Q/01	4Q/01	1Q/02	2Q/02	3Q/02	4Q/02	1Q/03	2Q/03
Train 1								
Planned unavailable hours	14.20	16.20	0	79.48	45.38	11.25	28.17	0
Unplanned unavailable hours	0	0	0	0	0	14.52	0	0
Fault exposure hours	0	0	0	0	0	0	0	0
Effective Reset hours	0	0	0	0	0	0	0	0
Required hours	2208.00	2209.00	2160.00	2183.00	2208.00	2209.00	2160.00	2183.00
Train 2								
Planned unavailable hours	12.20	8.90	72.67	26.33	45.92	7.83	153.85	0
Unplanned unavailable hours	0	0	9.55	0	0	0	25.45	0
Fault exposure hours	0	0	0	0	0	0	0	0
Effective Reset hours	0	0	0	0	0	0	0	0
Required hours	2208.00	2209.00	2160.00	2183.00	2208.00	2209.00	2160.00	2183.00
Train 3								
Planned unavailable hours	122.00	86.70	16.32	133.99	16.65	13.67	7.90	0
Unplanned unavailable hours	90.90	0	0	0	0	0.55	0	0
Fault exposure hours	0	0	0	0	0	0	0	0
Effective Reset hours	0	0	0	0	0	0	0	0
Required hours	2208.00	2209.00	2160.00	2183.00	2208.00	2209.00	2160.00	2183.00
Indicator value	1.2%	1.3%	1.3%	1.4%	1.4%	1.5%	1.7%	1.7%

Licensee Comments:

2Q/03: Corrections made to the planned unavailable hours taking credit for maintenance overhaul hours for the

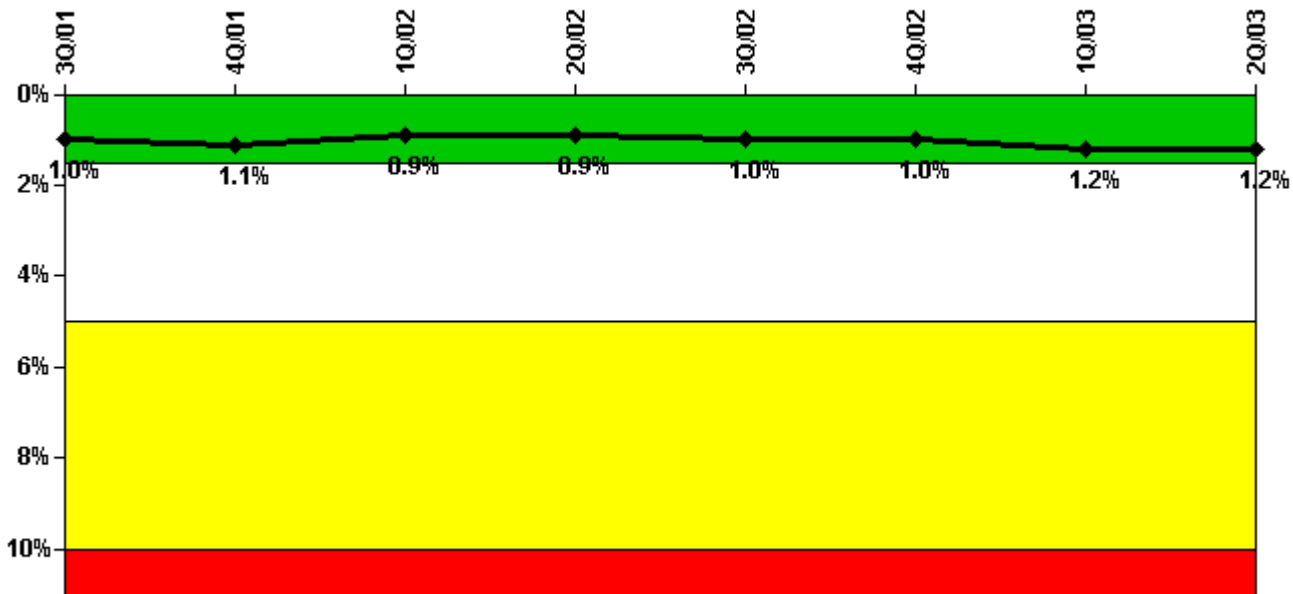
following dates: 4th Qtr 2000, October, Train 2 - 2nd Qtr 2001, April, Train 3 and May, Trains 1 and 3 -1st Qtr 2002, January, Train 1

1Q/02: Corrected January Train 1 planned unavailable hours to reflect credit for maintenance overhaul hours.

2Q/01: Corrected April Train 3 planned unavailable hours to reflect credit for maintenance overhaul hours.

4Q/00: Corrected October Train 2 planned unavailable hours to reflect credit for maintenance overhaul hours.

Safety System Unavailability, High Pressure Injection System (HPSI)



Thresholds: White > 1.5% Yellow > 5.0% Red > 10.0%

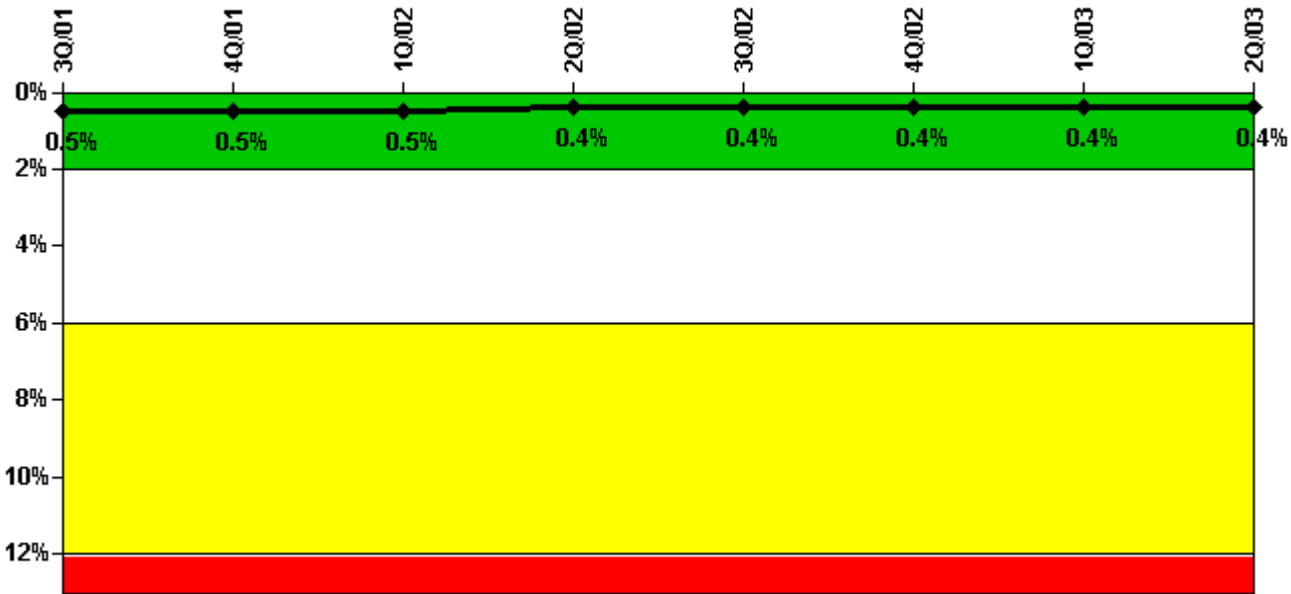
Notes

Safety System Unavailability, High Pressure Injection System (HPSI)	3Q/01	4Q/01	1Q/02	2Q/02	3Q/02	4Q/02	1Q/03	2Q/03
Train 1								
Planned unavailable hours	16.30	29.30	0.75	0	26.50	14.55	44.00	0
Unplanned unavailable hours	0	0	0	0	0	0	0	0
Fault exposure hours	0	0	0	0	0	0	0	0
Effective Reset hours	0	0	0	0	0	0	0	0
Required hours	2208.00	1719.40	2160.00	2183.00	2208.00	2209.00	2026.97	0
Train 2								
Planned unavailable hours	11.30	11.90	15.10	0.55	0.30	6.48	86.75	0
Unplanned unavailable hours	0	0	0	0	0	0	0	0
Fault exposure hours	0	0	0	0	0	0	0	0

Effective Reset hours	0	0	0	0	0	0	0	0
Required hours	2208.00	1719.40	2160.00	2183.00	2208.00	2209.00	2026.97	0
Train 3								
Planned unavailable hours	74.30	0	14.58	22.36	70.80	13.94	35.75	0
Unplanned unavailable hours	0.30	0	0	0	0	2.92	0	0
Fault exposure hours	0	0	0	0	0	0	0	0
Effective Reset hours	0	0	0	0	0	0	0	0
Required hours	2208.00	1719.40	2160.00	2183.00	2208.00	2209.00	2026.97	0
Indicator value	1.0%	1.1%	0.9%	0.9%	1.0%	1.0%	1.2%	1.2%

Licensee Comments: none

Safety System Unavailability, Heat Removal System (AFW)



Thresholds: White > 2.0% Yellow > 6.0% Red > 12.0%

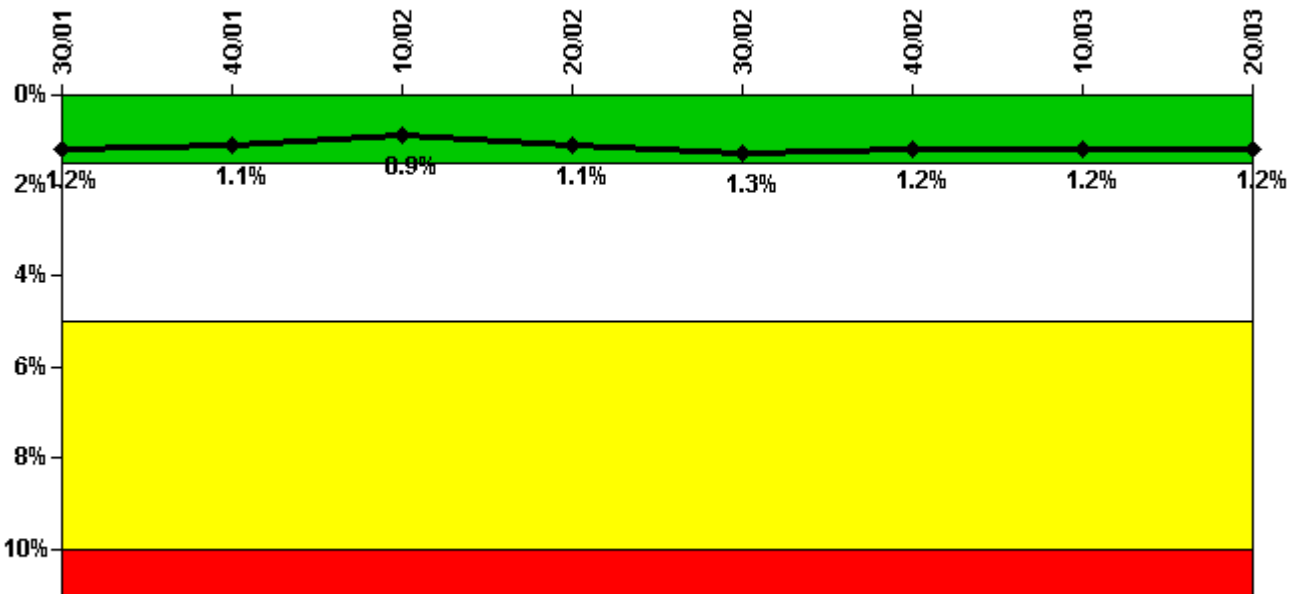
Notes

Safety System Unavailability, Heat Removal System (AFW)	3Q/01	4Q/01	1Q/02	2Q/02	3Q/02	4Q/02	1Q/03	2Q/03
Train 1								
Planned unavailable hours	6.80	0	5.85	13.82	0	0	28.63	0
Unplanned unavailable hours	0	0	0	0	0	0	0	0
Fault exposure hours	0	0	0	0	0	0	0	0
Effective Reset hours	0	0	0	0	0	0	0	0
Required hours	2208.00	1719.40	2160.00	2183.00	2208.00	2209.00	2024.90	0

Train 2								
Planned unavailable hours	10.00	0	24.12	12.46	0	0	18.50	0
Unplanned unavailable hours	0	0	0	0	0	0	0	0
Fault exposure hours	0	0	0	0	0	0	0	0
Effective Reset hours	0	0	0	0	0	0	0	0
Required hours	2208.00	1719.40	2160.00	2183.00	2208.00	2209.00	2024.90	0
Train 3								
Planned unavailable hours	12.10	14.30	8.37	0	8.97	0	24.49	0
Unplanned unavailable hours	0.30	0	0	0	0	2.92	0	0
Fault exposure hours	0	0	0	0	0	0	0	0
Effective Reset hours	0	0	0	0	0	0	0	0
Required hours	2208.00	1719.40	2160.00	2183.00	2208.00	2209.00	2024.90	0
Train 4								
Planned unavailable hours	12.00	10.60	9.30	0	18.75	0	12.34	0
Unplanned unavailable hours	0	0	0	0	0	0	0	0
Fault exposure hours	0	0	0	0	0	0	0	0
Effective Reset hours	0	0	0	0	0	0	0	0
Required hours	2208.00	1719.40	2160.00	2183.00	2208.00	2209.00	2024.90	0
Indicator value	0.5%	0.5%	0.5%	0.4%	0.4%	0.4%	0.4%	0.4%

Licensee Comments: none

Safety System Unavailability, Residual Heat Removal System



Thresholds: White > 1.5% Yellow > 5.0% Red > 10.0%

Notes

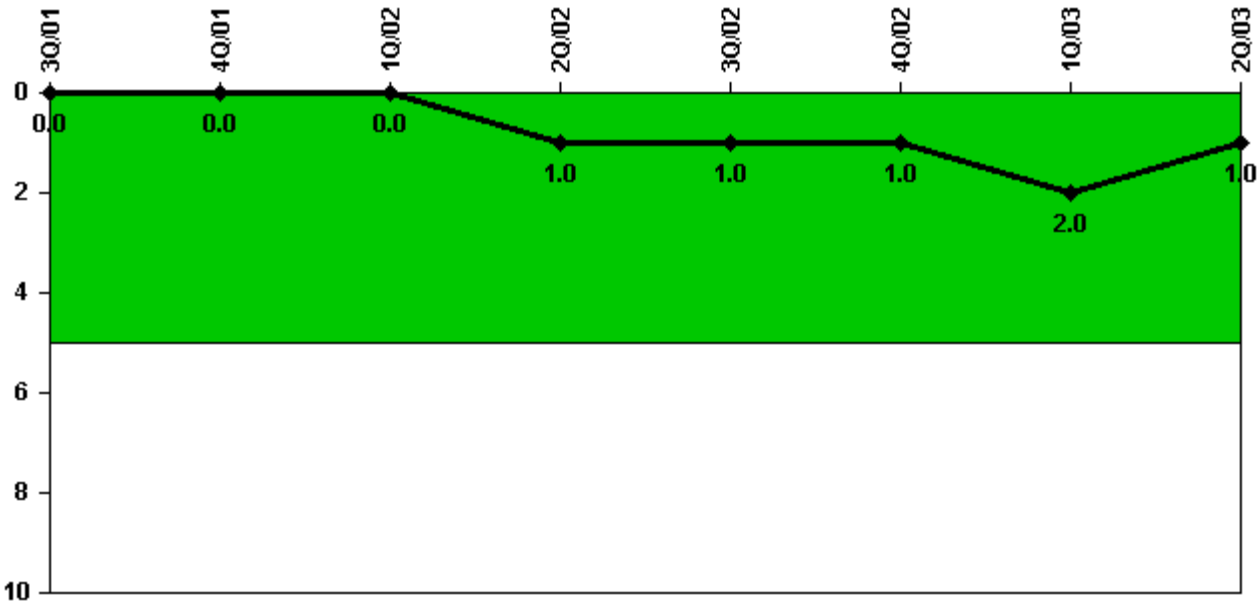
Safety System Unavailability, Residual Heat Removal System	3Q/01	4Q/01	1Q/02	2Q/02	3Q/02	4Q/02	1Q/03	2Q/03
Train 1								
Planned unavailable hours	83.00	35.80	13.60	76.00	16.23	27.88	17.36	0
Unplanned unavailable hours	0	0	0	42.18	0	0	0	0
Fault exposure hours	0	0	0	0	0	0	0	0
Effective Reset hours	0	0	0	0	0	0	0	0
Required hours	2208.00	2185.90	2160.00	2183.00	2208.00	2209.00	2160.00	924.66
Train 2								
Planned unavailable hours	0.80	11.80	0.43	53.50	0.30	0.65	15.79	0
Unplanned unavailable hours	0	0	0	0	0	0	0	0
Fault exposure hours	0	0	0	0	0	0	0	0
Effective Reset hours	0	0	0	0	0	0	0	0
Required hours	2208.00	2185.90	2160.00	2183.00	2208.00	2209.00	2160.00	924.66
Train 3								
Planned unavailable hours	74.30	0	21.58	81.50	70.80	0.42	17.58	0
Unplanned unavailable hours	0.30	0	0	0	0	2.92	0	0
Fault exposure hours	0	0	0	0	0	0	0	0
Effective Reset hours	0	0	0	0	0	0	0	0
Required hours	2208.00	2185.90	2160.00	2183.00	2208.00	2209.00	2160.00	924.66
Indicator value	1.2%	1.1%	0.9%	1.1%	1.3%	1.2%	1.2%	1.2%

Licensee Comments:

2Q/03: Corrections made to the planned unavailable hours taking credit for maintenance overhaul hours for the following dates: 1st Qtr 2003, January, Train 2 and March, Trains 1 and 3

1Q/03: Corrected January Train 2 and March Train 1 and Train 3 planned unavailable hours to reflect credit for maintenance overhaul hours. Corrected math error (4/01) and minor overcount of unavailable hours (8/01) in prior quarters.

Safety System Functional Failures (PWR)



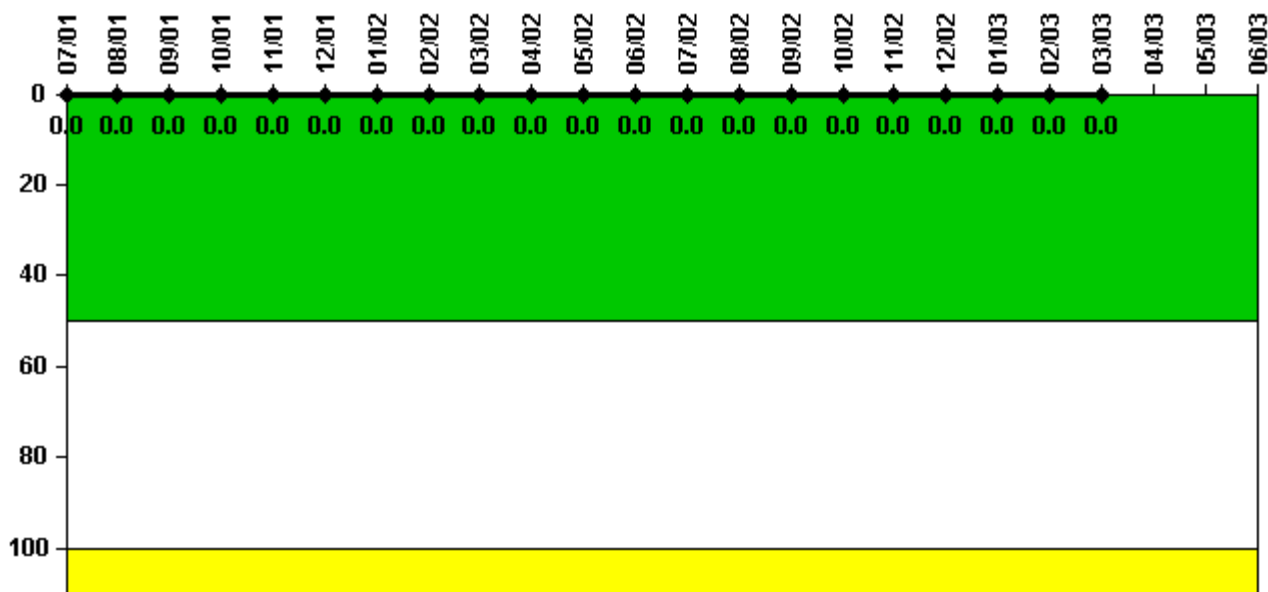
Thresholds: White > 5.0

Notes

Safety System Functional Failures (PWR)	3Q/01	4Q/01	1Q/02	2Q/02	3Q/02	4Q/02	1Q/03	2Q/03
Safety System Functional Failures	0	0	0	1	0	0	1	0
Indicator value	0	0	0	1	1	1	2	1

Licensee Comments: none

Reactor Coolant System Activity



Thresholds: White > 50.0 Yellow > 100.0

Notes

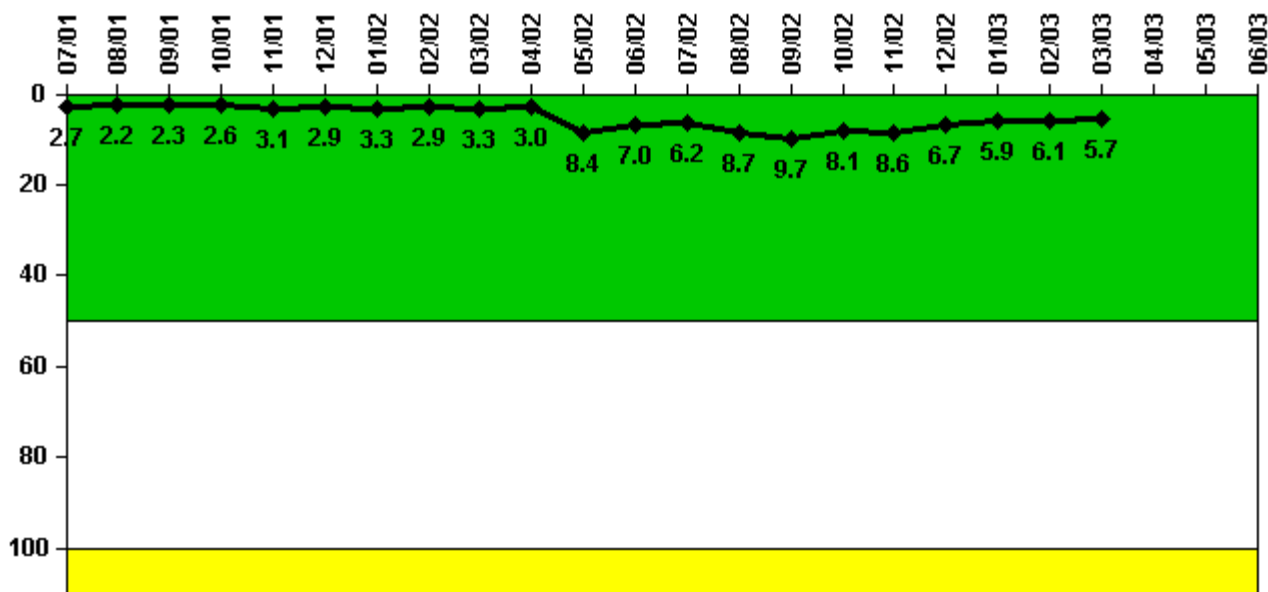
Reactor Coolant System Activity	7/01	8/01	9/01	10/01	11/01	12/01	1/02	2/02	3/02	4/02	5/02	6/02
Maximum activity	0.000383	0.000374	0.000449	0.000077	0.000085	0.000083	0.000086	0.000083	0.000107	0.000093	0.000095	0.000092
Technical specification limit	1.0	1.0	1.0	1.0	1.0	1.0	1.0	1.0	1.0	1.0	1.0	1.0
Indicator value	0	0	0	0	0	0	0	0	0	0	0	0

Reactor Coolant System Activity	7/02	8/02	9/02	10/02	11/02	12/02	1/03	2/03	3/03	4/03	5/03	6/03
Maximum activity	0.000117	0.000102	0.000154	0.000109	0.000100	0.000114	0.000107	0.000111	0.000123	N/A	N/A	N/A
Technical specification limit	1.0	1.0	1.0	1.0	1.0	1.0	1.0	1.0	1.0	1.0	1.0	1.0
Indicator value	0	0	0	0	0	0	0	0	0	N/A	N/A	N/A

Licensee Comments:

6/03: Unit has been shut down for April, May, and June

Reactor Coolant System Leakage



Thresholds: White > 50.0 Yellow > 100.0

Notes

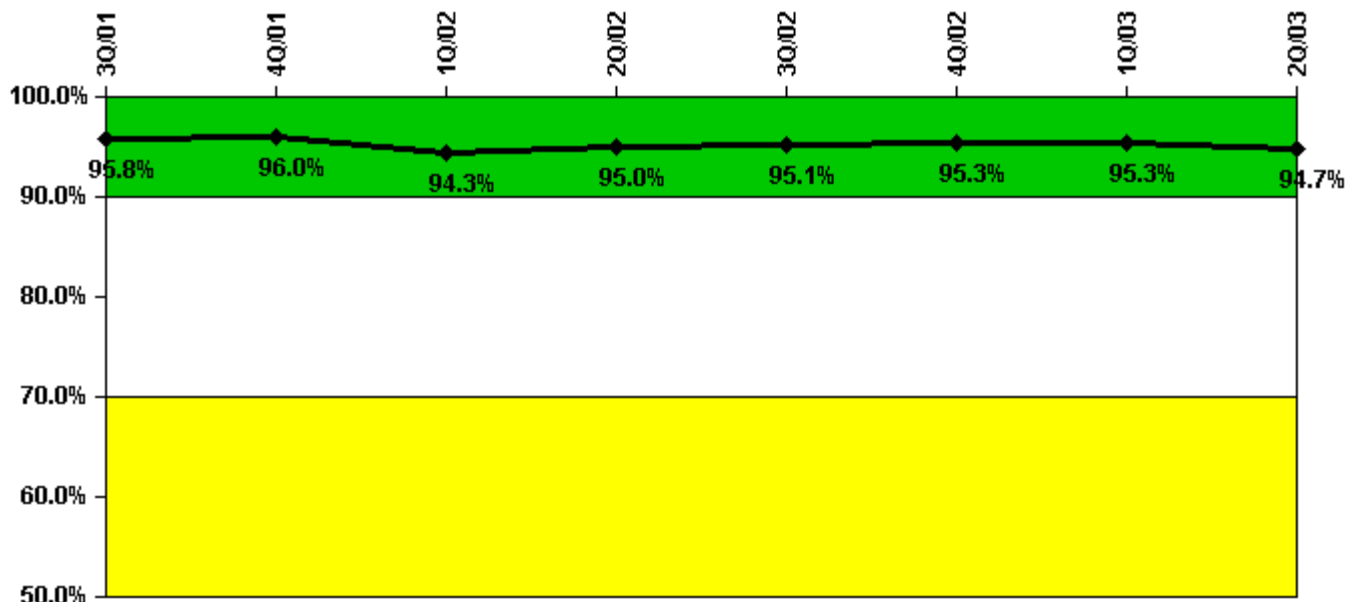
Reactor Coolant System Leakage	7/01	8/01	9/01	10/01	11/01	12/01	1/02	2/02	3/02	4/02	5/02	6/02
Maximum leakage	0.269	0.217	0.234	0.257	0.307	0.289	0.325	0.289	0.325	0.301	0.842	0.702
Technical specification limit	10.0	10.0	10.0	10.0	10.0	10.0	10.0	10.0	10.0	10.0	10.0	10.0
Indicator value	2.7	2.2	2.3	2.6	3.1	2.9	3.3	2.9	3.3	3.0	8.4	7.0

Reactor Coolant System Leakage	7/02	8/02	9/02	10/02	11/02	12/02	1/03	2/03	3/03	4/03	5/03	6/03
Maximum leakage	0.621	0.866	0.966	0.810	0.857	0.673	0.593	0.612	0.572	N/A	N/A	N/A
Technical specification limit	10.0	10.0	10.0	10.0	10.0	10.0	10.0	10.0	10.0	10.0	10.0	10.0
Indicator value	6.2	8.7	9.7	8.1	8.6	6.7	5.9	6.1	5.7	N/A	N/A	N/A

Licensee Comments:

6/03: Unit has been shut down for April, May, and June

Drill/Exercise Performance



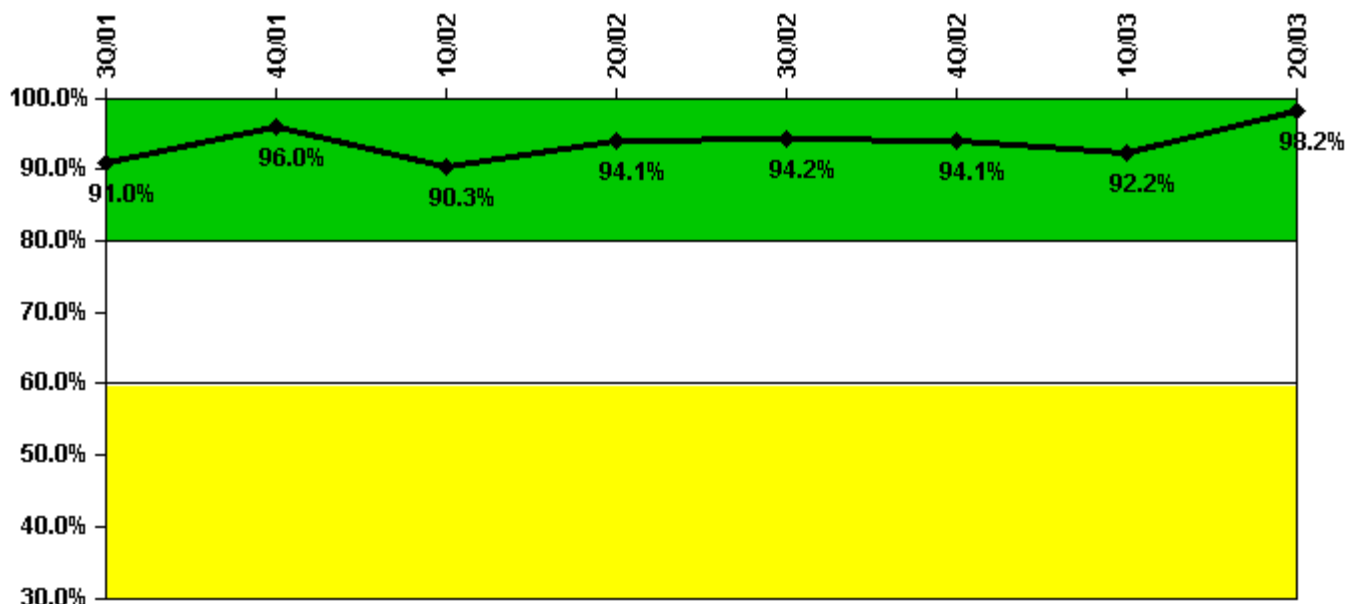
Thresholds: White < 90.0% Yellow < 70.0%

Notes

Drill/Exercise Performance	3Q/01	4Q/01	1Q/02	2Q/02	3Q/02	4Q/02	1Q/03	2Q/03
Successful opportunities	19.0	78.0	33.0	28.0	33.0	0	0	61.0
Total opportunities	20.0	80.0	37.0	28.0	34.0	0	0	67.0
Indicator value	95.8%	96.0%	94.3%	95.0%	95.1%	95.3%	95.3%	94.7%

Licensee Comments: none

ERO Drill Participation



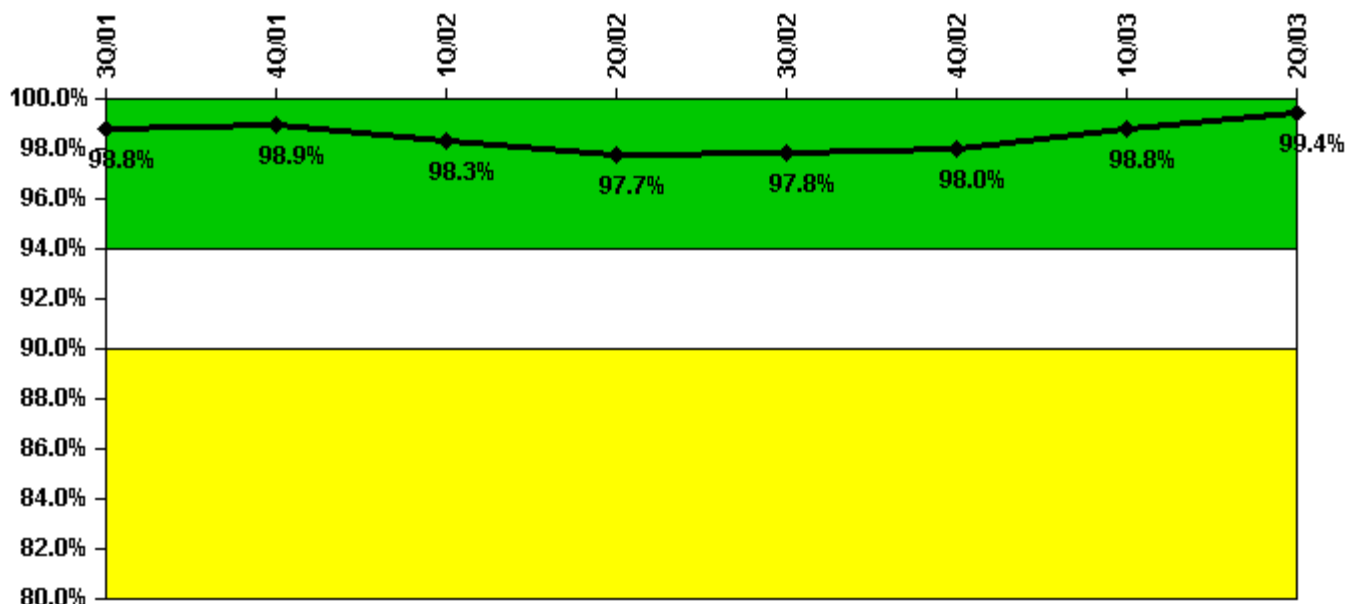
Thresholds: White < 80.0% Yellow < 60.0%

Notes

ERO Drill Participation	3Q/01	4Q/01	1Q/02	2Q/02	3Q/02	4Q/02	1Q/03	2Q/03
Participating Key personnel	111.0	120.0	112.0	111.0	113.0	111.0	107.0	111.0
Total Key personnel	122.0	125.0	124.0	118.0	120.0	118.0	116.0	113.0
Indicator value	91.0%	96.0%	90.3%	94.1%	94.2%	94.1%	92.2%	98.2%

Licensee Comments: none

Alert & Notification System



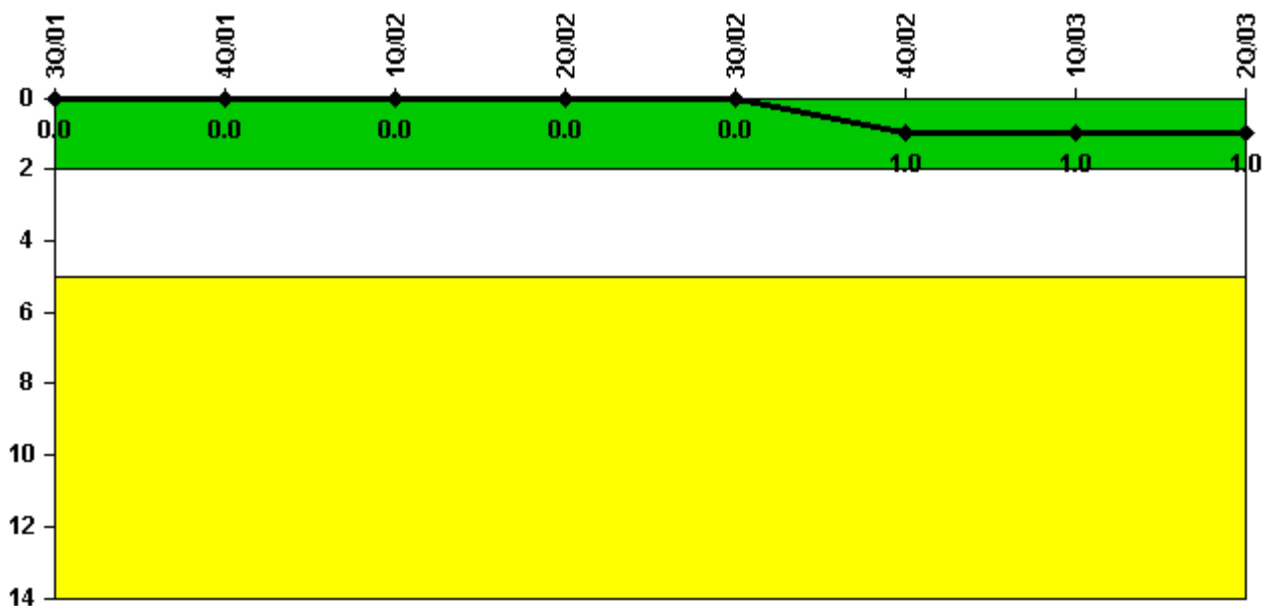
Thresholds: White < 94.0% Yellow < 90.0%

Notes

Alert & Notification System	3Q/01	4Q/01	1Q/02	2Q/02	3Q/02	4Q/02	1Q/03	2Q/03
Successful siren-tests	189	220	186	218	190	253	224	192
Total sirens-tests	192	224	192	224	192	256	224	192
Indicator value	98.8%	98.9%	98.3%	97.7%	97.8%	98.0%	98.8%	99.4%

Licensee Comments: none

Occupational Exposure Control Effectiveness



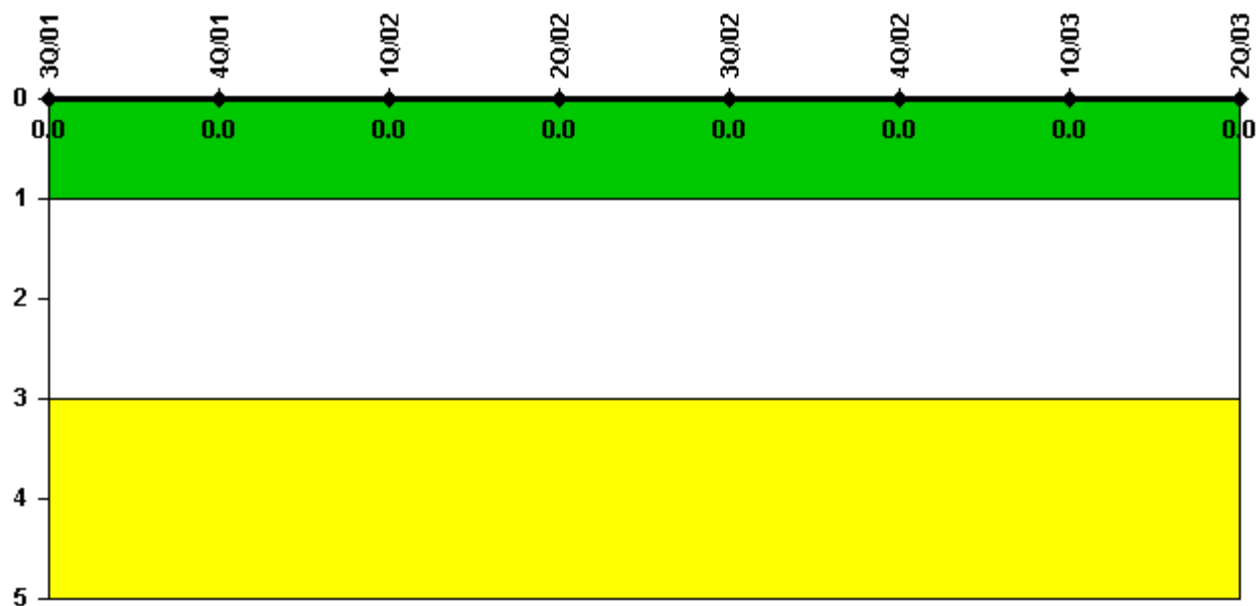
Thresholds: White > 2.0 Yellow > 5.0

Notes

Occupational Exposure Control Effectiveness	3Q/01	4Q/01	1Q/02	2Q/02	3Q/02	4Q/02	1Q/03	2Q/03
High radiation area occurrences	0	0	0	0	0	1	0	0
Very high radiation area occurrences	0	0	0	0	0	0	0	0
Unintended exposure occurrences	0	0	0	0	0	0	0	0
Indicator value	0	0	0	0	0	1	1	1

Licensee Comments: none

RETS/ODCM Radiological Effluent



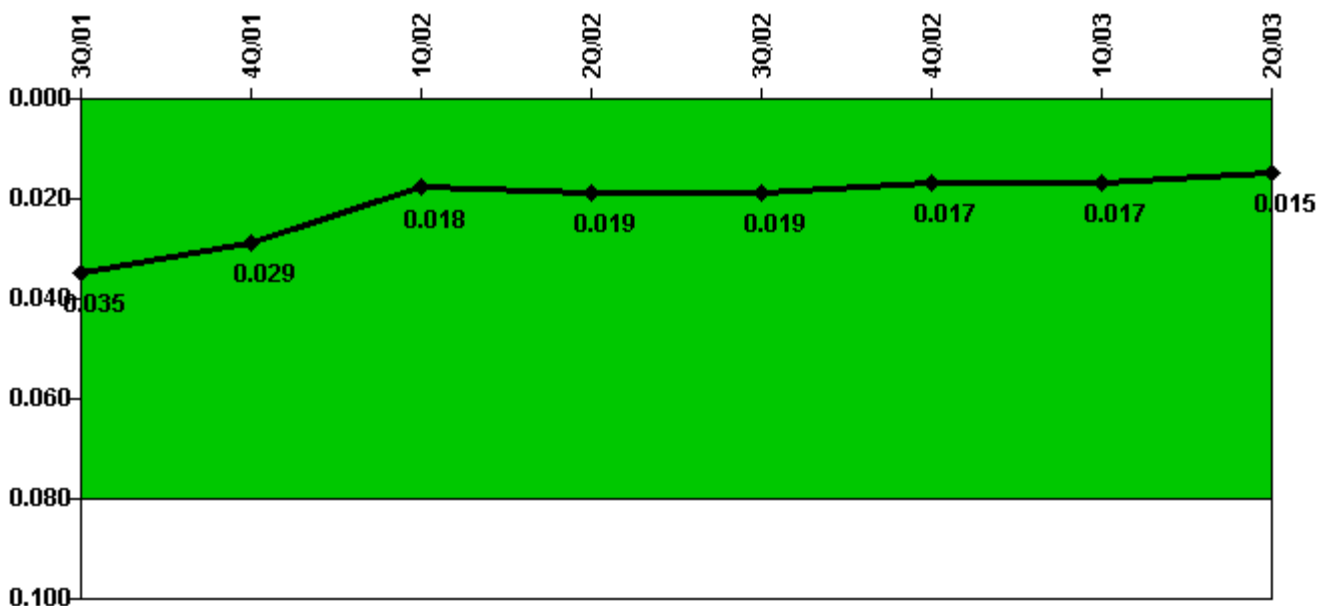
Thresholds: White > 1.0 Yellow > 3.0

Notes

RETS/ODCM Radiological Effluent	3Q/01	4Q/01	1Q/02	2Q/02	3Q/02	4Q/02	1Q/03	2Q/03
RETS/ODCM occurrences	0	0	0	0	0	0	0	0
Indicator value	0	0	0	0	0	0	0	0

Licensee Comments: none

Protected Area Security Performance Index



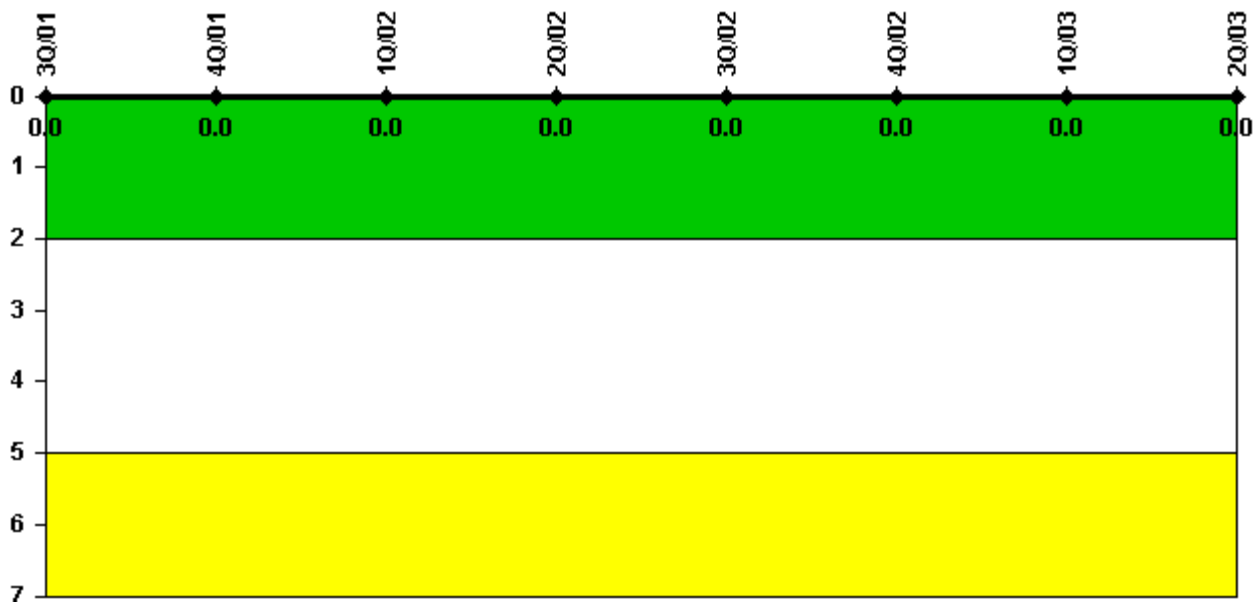
Thresholds: White > 0.080

Notes

Protected Area Security Performance Index	3Q/01	4Q/01	1Q/02	2Q/02	3Q/02	4Q/02	1Q/03	2Q/03
IDS compensatory hours	145.80	143.90	77.50	139.70	107.90	82.10	76.90	76.40
CCTV compensatory hours	66.3	16.6	11.9	41.3	97.0	4.8	11.9	14.5
IDS normalization factor	2.20	2.20	2.20	2.20	2.20	2.20	2.20	2.20
CCTV normalization factor	1.3	1.3	1.3	1.3	1.3	1.3	1.3	1.3
Index Value	0.035	0.029	0.018	0.019	0.019	0.017	0.017	0.015

Licensee Comments: none

Personnel Screening Program



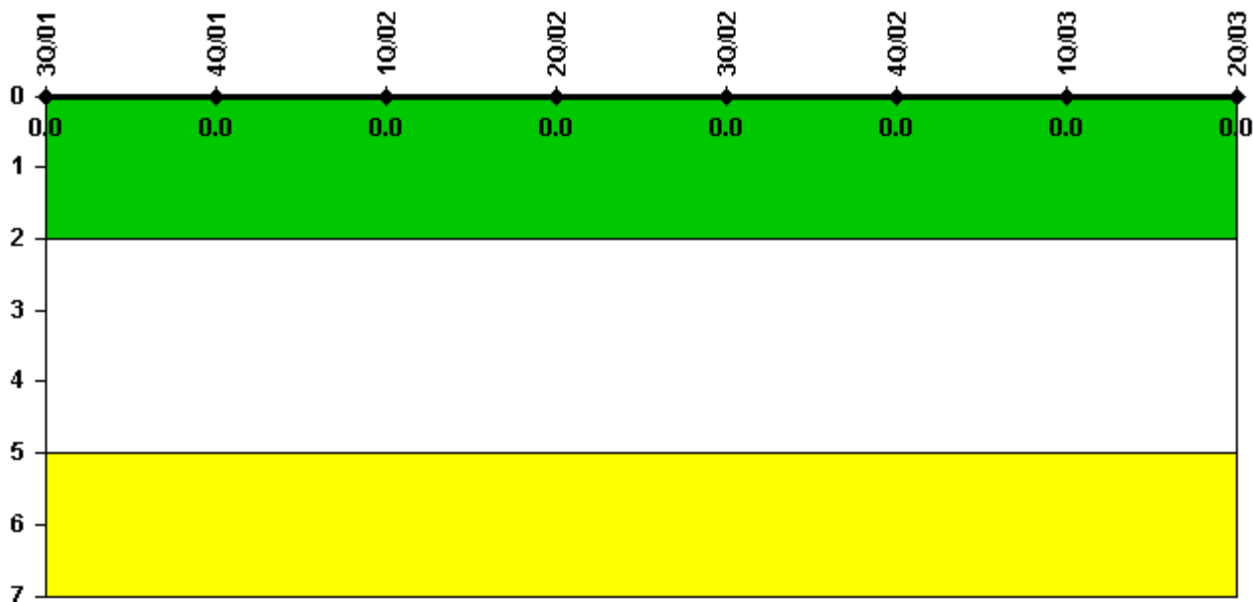
Thresholds: White > 2.0 Yellow > 5.0

Notes

Personnel Screening Program	3Q/01	4Q/01	1Q/02	2Q/02	3Q/02	4Q/02	1Q/03	2Q/03
Program failures	0	0	0	0	0	0	0	0
Indicator value	0	0	0	0	0	0	0	0

Licensee Comments: none

FFD/Personnel Reliability



Thresholds: White > 2.0 Yellow > 5.0

Notes

FFD/Personnel Reliability	3Q/01	4Q/01	1Q/02	2Q/02	3Q/02	4Q/02	1Q/03	2Q/03
Program Failures	0	0	0	0	0	0	0	0
Indicator value	0	0	0	0	0	0	0	0

Licensee Comments: none

▲ [PI Summary](#) | [Inspection Findings Summary](#) | [Reactor Oversight Process](#)

Last Modified: July 22, 2003