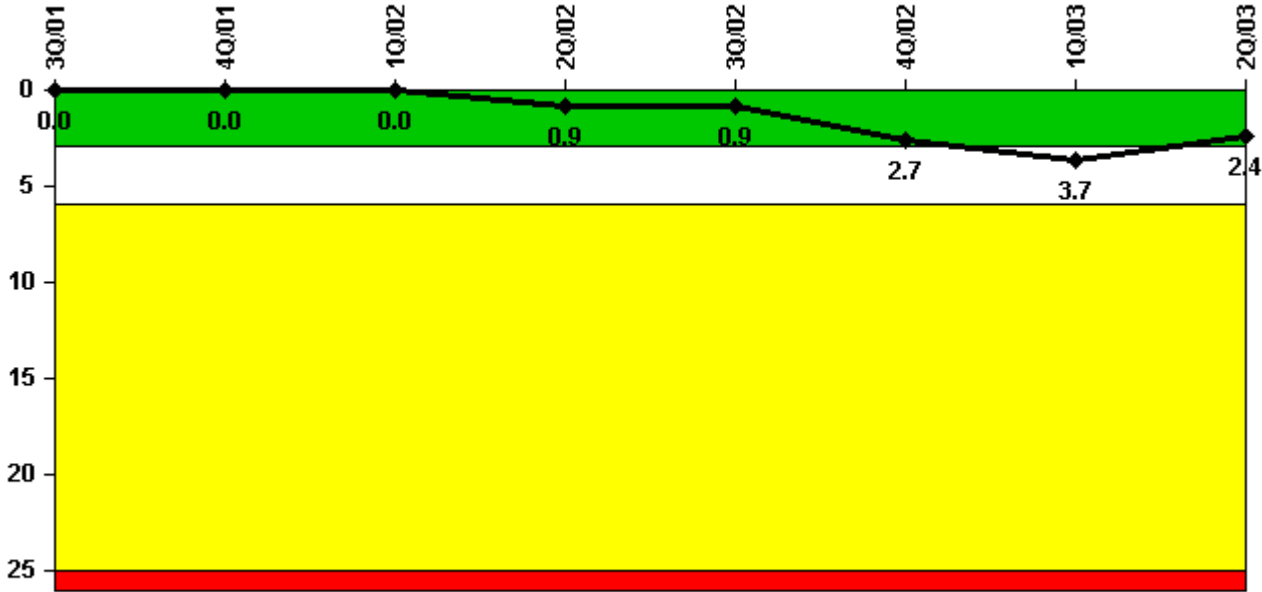


# San Onofre 2

## 2Q/2003 Performance Indicators

Licensee's General Comments: none

### Unplanned Scrams per 7000 Critical Hrs



Thresholds: White > 3.0 Yellow > 6.0 Red > 25.0

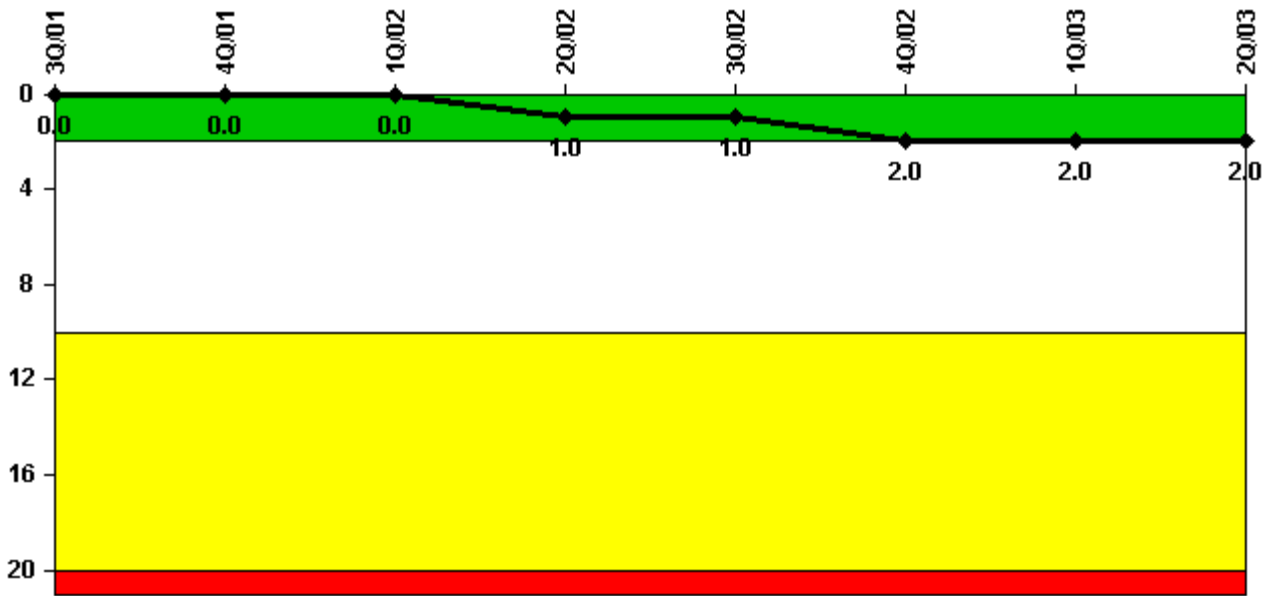
### Notes

Unplanned Scrams per 7000 Critical Hrs	3Q/01	4Q/01	1Q/02	2Q/02	3Q/02	4Q/02	1Q/03	2Q/03
Unplanned scrams	0	0	0	1.0	0	2.0	1.0	0
Critical hours	2208.0	2004.9	2160.0	1206.2	2190.4	2124.1	2147.1	2139.7
Indicator value	0	0	0	0.9	0.9	2.7	3.7	2.4

Licensee Comments:

2Q/03: 2Q03 - 06/21/03 @ 0627 Unit 2: Planned reactor trip for CEA repairs. 2Q03 - 06/23/03 @ 0146 Unit 2: Reactor is critical.

### Scrams with Loss of Normal Heat Removal



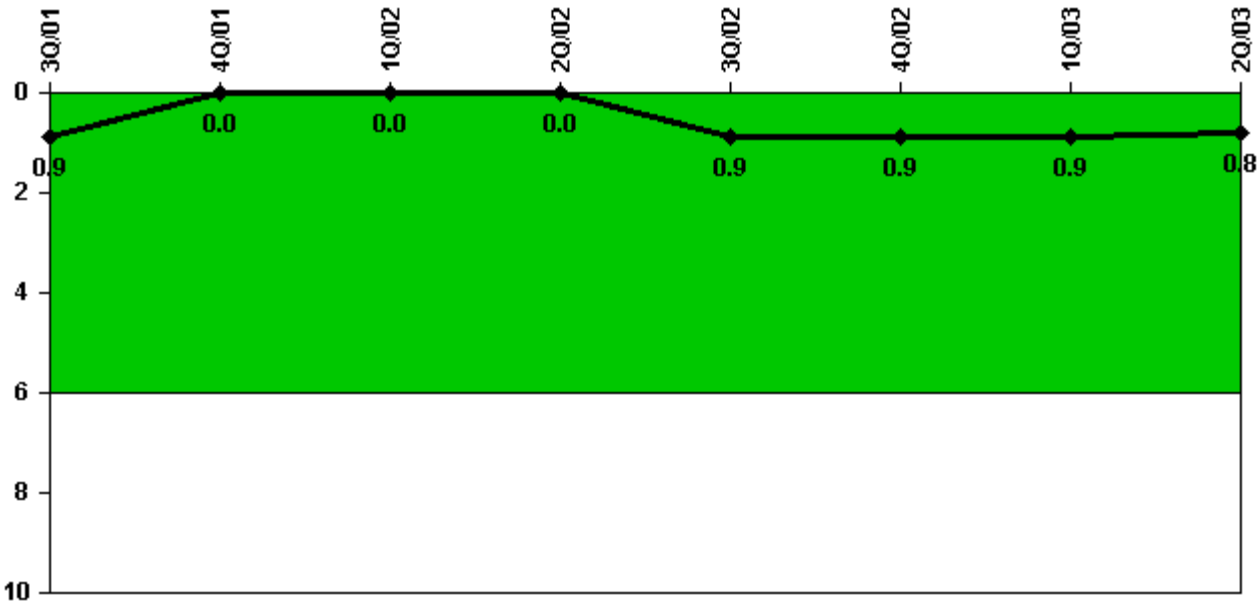
Thresholds: White > 2.0 Yellow > 10.0 Red > 20.0

#### Notes

Scrams with Loss of Normal Heat Removal	3Q/01	4Q/01	1Q/02	2Q/02	3Q/02	4Q/02	1Q/03	2Q/03
Scrams	0	0	0	1.0	0	1.0	0	0
Indicator value	0	0	0	1.0	1.0	2.0	2.0	2.0

Licensee Comments: none

### Unplanned Power Changes per 7000 Critical Hrs



Thresholds: White > 6.0

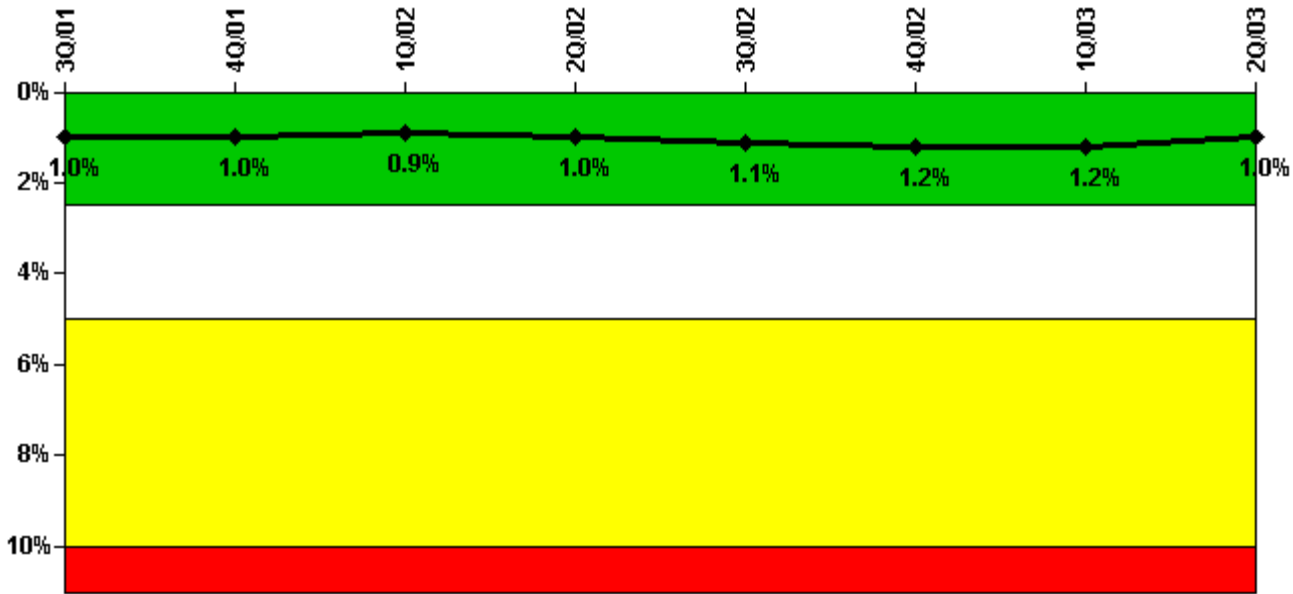
#### Notes

Unplanned Power Changes per 7000 Critical Hrs	3Q/01	4Q/01	1Q/02	2Q/02	3Q/02	4Q/02	1Q/03	2Q/03
Unplanned power changes	0	0	0	0	1.0	0	0	0
Critical hours	2208.0	2004.9	2160.0	1206.2	2190.4	2124.1	2147.1	2139.7
Indicator value	0.9	0	0	0	0.9	0.9	0.9	0.8

Licensee Comments:

2Q/03: 2Q03 - 06/21/03 @ 0627 Unit 2: Planned reactor trip for CEA repairs. 2Q03 - 06/23/03 @ 0146 Unit 2: Reactor is critical.

### Safety System Unavailability, Emergency AC Power



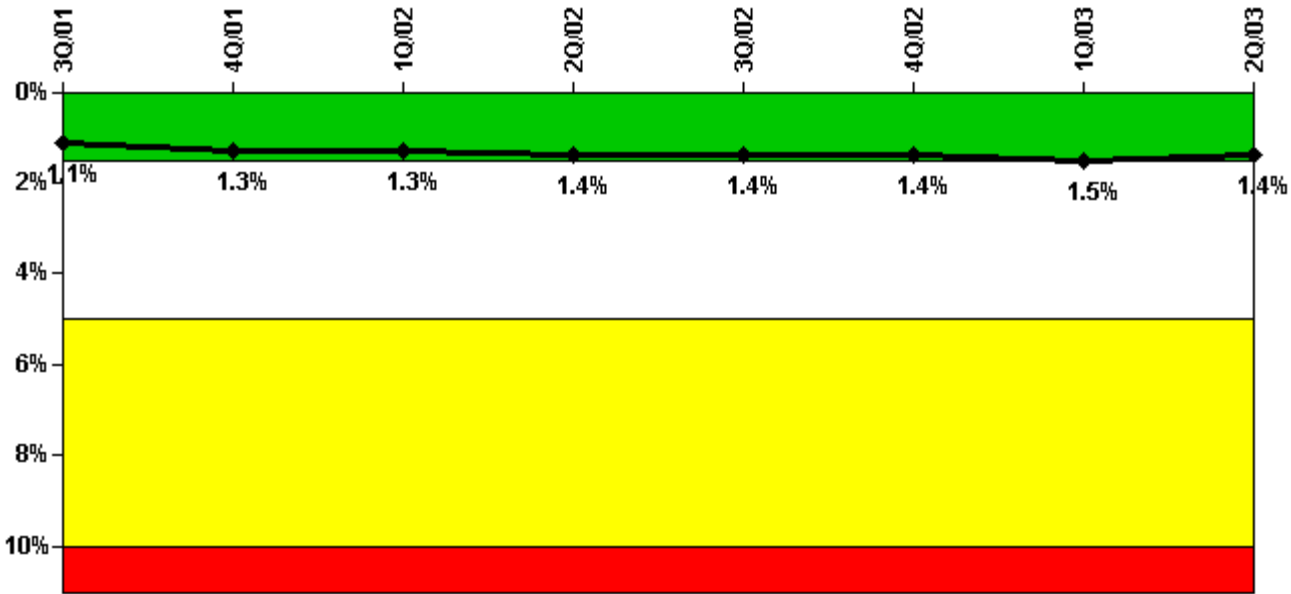
Thresholds: White > 2.5% Yellow > 5.0% Red > 10.0%

#### Notes

Safety System Unavailability, Emergency AC Power	3Q/01	4Q/01	1Q/02	2Q/02	3Q/02	4Q/02	1Q/03	2Q/03
<b>Train 1</b>								
Planned unavailable hours	22.00	5.03	62.90	1.28	79.08	27.82	1.72	2.22
Unplanned unavailable hours	0	0	0	3.75	0	0	0	0
Fault exposure hours	0	0	0	0	0	0	0	0
Effective Reset hours	0	0	0	0	0	0	0	0
Required hours	2208.00	2209.00	2160.00	2183.00	2208.00	2209.00	2160.00	2183.00
<b>Train 2</b>								
Planned unavailable hours	1.50	2.37	2.30	40.85	1.32	51.80	2.35	1.02
Unplanned unavailable hours	0	0	0	0	0	0	0	0
Fault exposure hours	0	0	0	0	0	0	0	0
Effective Reset hours	0	0	0	0	0	0	0	0
Required hours	2208.00	2209.00	2160.00	2183.00	2208.00	2209.00	2160.00	2183.00
Indicator value	1.0%	1.0%	0.9%	1.0%	1.1%	1.2%	1.2%	1.0%

Licensee Comments: none

### Safety System Unavailability, High Pressure Injection System (HPSI)



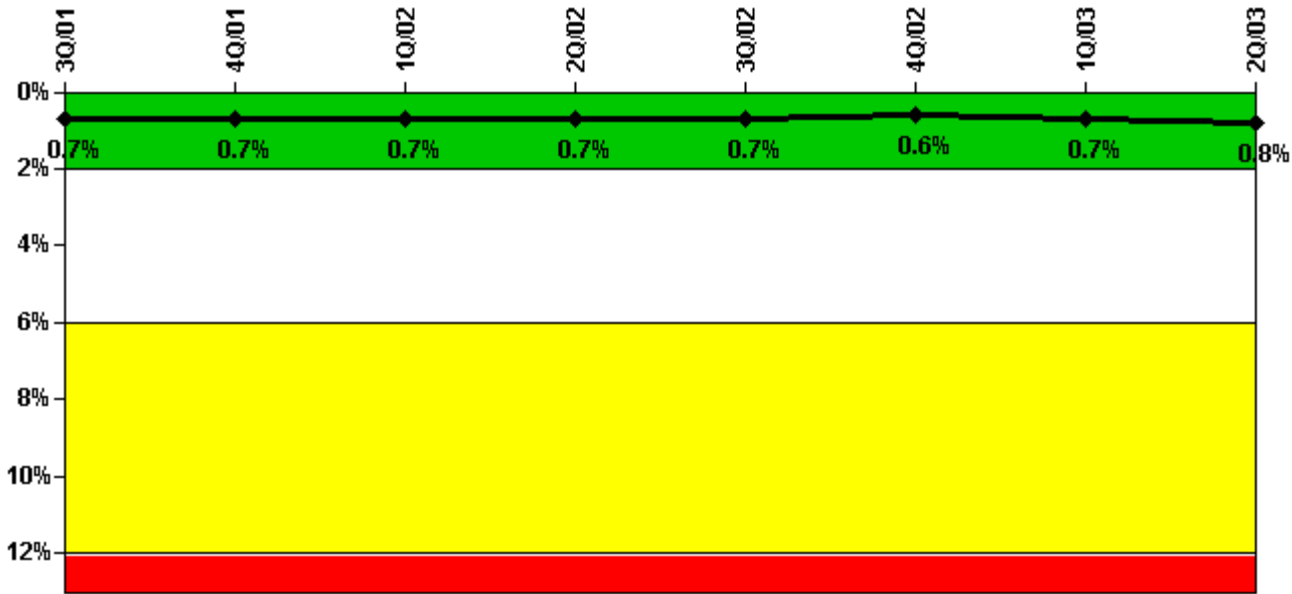
Thresholds: White > 1.5% Yellow > 5.0% Red > 10.0%

**Notes**

Safety System Unavailability, High Pressure Injection System (HPSI)	3Q/01	4Q/01	1Q/02	2Q/02	3Q/02	4Q/02	1Q/03	2Q/03
<b>Train 1</b>								
Planned unavailable hours	70.67	15.60	0.40	17.62	13.43	10.38	0.25	28.48
Unplanned unavailable hours	6.60	0.80	21.90	0	0.93	0	16.85	0
Fault exposure hours	0	0	0	0	0	0	0	0
Effective Reset hours	0	0	0	0	0	0	0	0
Required hours	2208.00	2000.00	2160.00	1206.17	2190.43	2124.09	2147.08	2139.68
<b>Train 2</b>								
Planned unavailable hours	4.22	62.17	22.00	0	14.15	13.40	29.24	3.33
Unplanned unavailable hours	2.67	0	0	0	4.02	5.53	1.67	1.82
Fault exposure hours	0	0	0	0	0	0	0	0
Effective Reset hours	0	0	0	0	0	0	0	0
Required hours	2208.00	2000.00	2160.00	1206.17	2190.43	2124.09	2147.08	2139.68
<b>Indicator value</b>	1.1%	1.3%	1.3%	1.4%	1.4%	1.4%	1.5%	1.4%

Licensee Comments: none

### Safety System Unavailability, Heat Removal System (AFW)



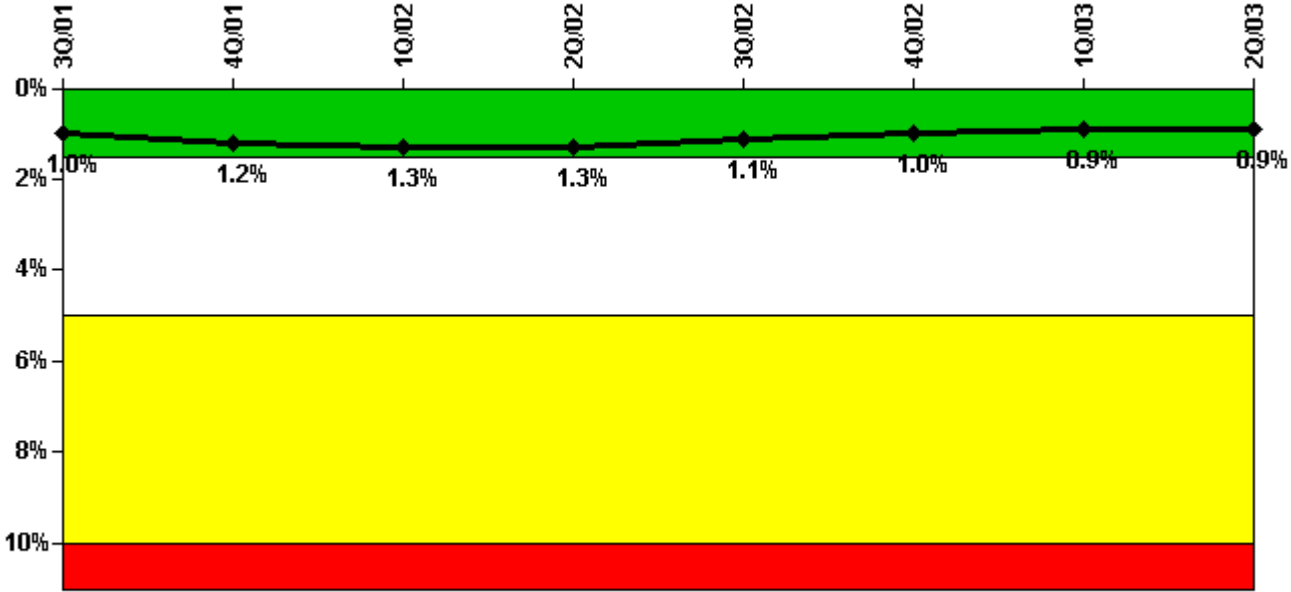
Thresholds: White > 2.0% Yellow > 6.0% Red > 12.0%

Notes

Safety System Unavailability, Heat Removal System (AFW)	3Q/01	4Q/01	1Q/02	2Q/02	3Q/02	4Q/02	1Q/03	2Q/03
<b>Train 1</b>								
Planned unavailable hours	19.80	0	0	0	45.43	1.42	0.50	30.00
Unplanned unavailable hours	0	0	0	0	0	0	0	0
Fault exposure hours	0	0	0	0	0	0	0	0
Effective Reset hours	0	0	0	0	0	0	0	0
Required hours	2208.00	2000.00	2160.00	1206.17	2190.43	2124.09	2147.08	2139.68
<b>Train 2</b>								
Planned unavailable hours	0	0	22.40	0	6.03	23.75	0	17.80
Unplanned unavailable hours	0	0	7.60	0	0	0	65.25	0
Fault exposure hours	0	0	0	0	0	0	0	0
Effective Reset hours	0	0	0	0	0	0	0	0
Required hours	2208.00	2000.00	2160.00	1206.17	2190.43	2124.09	2147.08	2139.68
<b>Train 3</b>								
Planned unavailable hours	52.60	13.50	40.40	0	16.77	0.25	0.77	37.92
Unplanned unavailable hours	23.30	17.20	0	0	0	0	0	0
Fault exposure hours	0	0	0	0	0	0	0	0
Effective Reset hours	0	0	0	0	0	0	0	0
Required hours	2208.00	2000.00	2160.00	1206.17	2190.43	2124.09	2147.08	2139.68
<b>Indicator value</b>	<b>0.7%</b>	<b>0.7%</b>	<b>0.7%</b>	<b>0.7%</b>	<b>0.7%</b>	<b>0.6%</b>	<b>0.7%</b>	<b>0.8%</b>

Licensee Comments: none

### Safety System Unavailability, Residual Heat Removal System



Thresholds: White > 1.5% Yellow > 5.0% Red > 10.0%

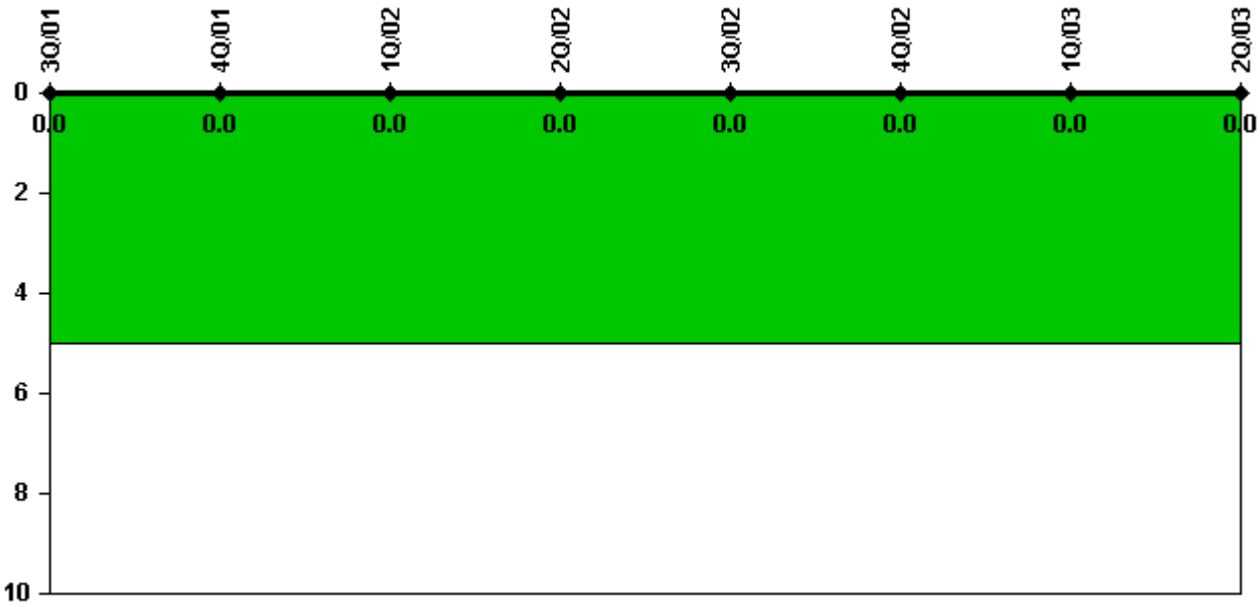
Notes

Safety System Unavailability, Residual Heat Removal System	3Q/01	4Q/01	1Q/02	2Q/02	3Q/02	4Q/02	1Q/03	2Q/03
<b>Train 1</b>								
Planned unavailable hours	71.52	61.40	1.00	18.35	67.30	12.65	0.25	25.45
Unplanned unavailable hours	6.60	0.80	21.90	0	0.93	0	16.85	0
Fault exposure hours	0	0	0	0	0	0	0	0
Effective Reset hours	0	0	0	0	0	0	0	0
Required hours	2208.00	2035.00	2160.00	1269.38	2208.00	2209.00	2160.00	2157.05
<b>Train 2</b>								
Planned unavailable hours	1.12	84.60	2.50	25.00	44.43	3.35	38.47	20.77
Unplanned unavailable hours	2.67	0	0	0	4.02	4.78	1.67	1.82
Fault exposure hours	0	0	0	0	0	0	0	0
Effective Reset hours	0	0	0	0	0	0	0	0
Required hours	2208.00	2035.00	2160.00	1269.38	2208.00	2209.00	2160.00	2157.05
<b>Train 3</b>								
Planned unavailable hours	0	0.60	0	0	0	0	0	0
Unplanned unavailable hours	0	0	0	0	0	0	0	0
Fault exposure hours	0	0	0	0	0	0	0	0
Effective Reset hours	0	0	0	0	0	0	0	0
Required hours	0	174.00	0	913.62	0	0	0	25.95
<b>Train 4</b>								
Planned unavailable hours	0	0	0	0	0	0	0	0

Unplanned unavailable hours	0	0	0	0	0	0	0	0
Fault exposure hours	0	0	0	0	0	0	0	0
Effective Reset hours	0	0	0	0	0	0	0	0
Required hours	0	174.00	0	913.62	0	0	0	25.95
Indicator value	1.0%	1.2%	1.3%	1.3%	1.1%	1.0%	0.9%	0.9%

Licensee Comments: none

### Safety System Functional Failures (PWR)



Thresholds: White > 5.0

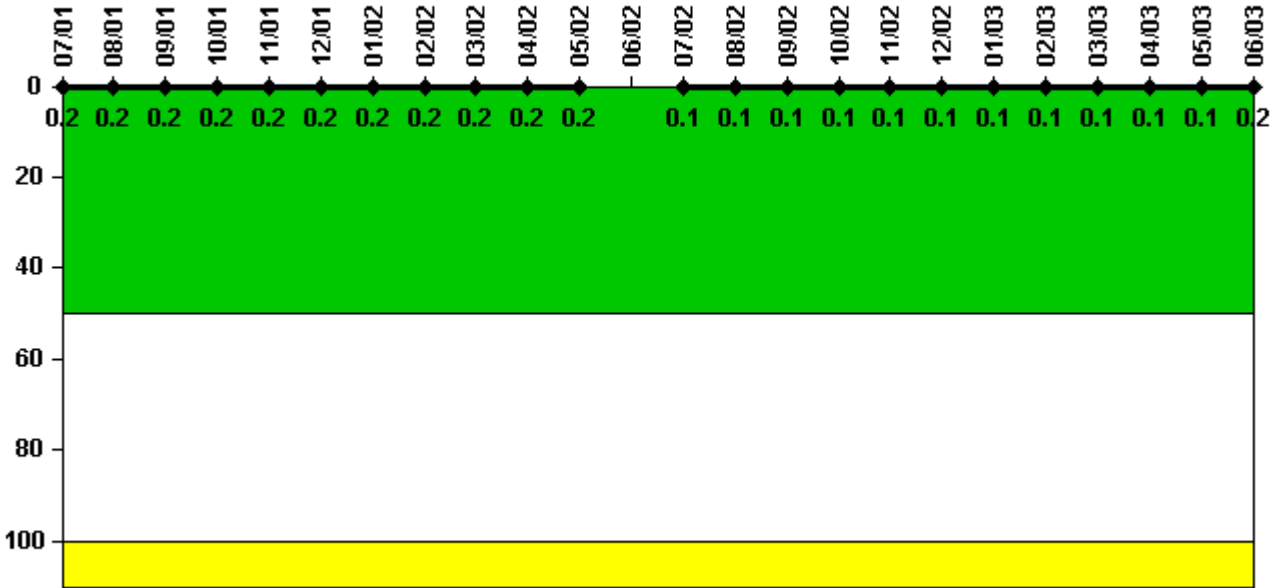
### Notes

Safety System Functional Failures (PWR)	3Q/01	4Q/01	1Q/02	2Q/02	3Q/02	4Q/02	1Q/03	2Q/03
Safety System Functional Failures	0	0	0	0	0	0	0	0
Indicator value	0	0	0	0	0	0	0	0

Licensee Comments: none



### Reactor Coolant System Activity



Thresholds: White > 50.0 Yellow > 100.0

#### Notes

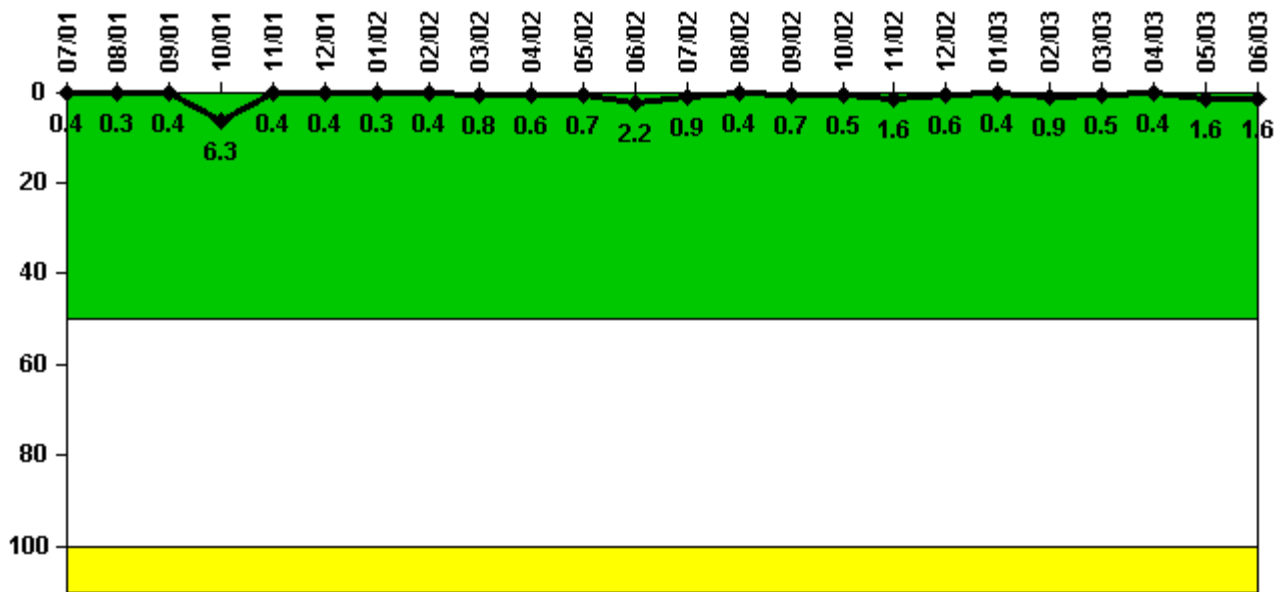
Reactor Coolant System Activity	7/01	8/01	9/01	10/01	11/01	12/01	1/02	2/02	3/02	4/02	5/02	6/02
Maximum activity	0.002000	0.002000	0.002000	0.002000	0.002000	0.002000	0.002000	0.002000	0.002000	0.002000	0.002000	N/A
Technical specification limit	1.0	1.0	1.0	1.0	1.0	1.0	1.0	1.0	1.0	1.0	1.0	1.0
Indicator value	0.2	0.2	0.2	0.2	0.2	0.2	0.2	0.2	0.2	0.2	0.2	N/A

Reactor Coolant System Activity	7/02	8/02	9/02	10/02	11/02	12/02	1/03	2/03	3/03	4/03	5/03	6/03
Maximum activity	0.001000	0.001000	0.001000	0.001000	0.001000	0.001000	0.001000	0.001000	0.001000	0.001000	0.001000	0.002000
Technical specification limit	1.0	1.0	1.0	1.0	1.0	1.0	1.0	1.0	1.0	1.0	1.0	1.0
Indicator value	0.1	0.1	0.1	0.1	0.1	0.1	0.1	0.1	0.1	0.1	0.1	0.2

Licensee Comments: none

### Reactor Coolant System Leakage



Thresholds: White > 50.0 Yellow > 100.0

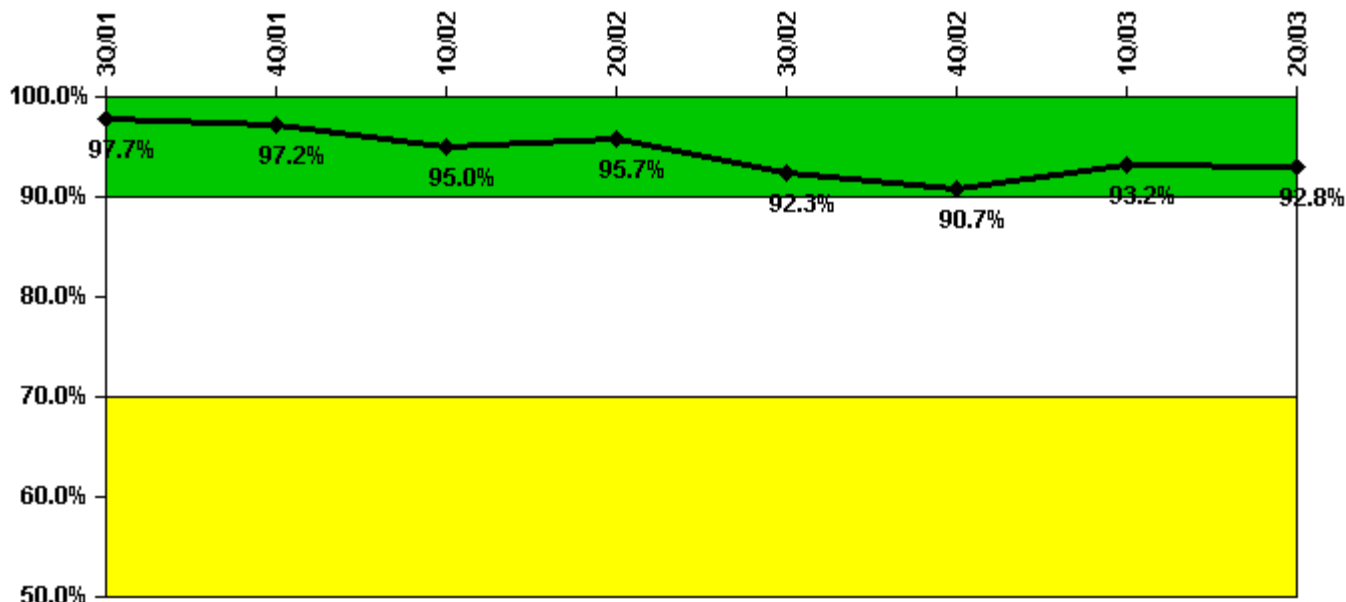
Notes

Reactor Coolant System Leakage	7/01	8/01	9/01	10/01	11/01	12/01	1/02	2/02	3/02	4/02	5/02	6/02
Maximum leakage	0.040	0.030	0.040	0.630	0.040	0.040	0.030	0.040	0.080	0.060	0.070	0.220
Technical specification limit	10.0	10.0	10.0	10.0	10.0	10.0	10.0	10.0	10.0	10.0	10.0	10.0
Indicator value	0.4	0.3	0.4	6.3	0.4	0.4	0.3	0.4	0.8	0.6	0.7	2.2
Reactor Coolant System Leakage	7/02	8/02	9/02	10/02	11/02	12/02	1/03	2/03	3/03	4/03	5/03	6/03
Maximum leakage	0.090	0.040	0.070	0.050	0.160	0.060	0.040	0.090	0.050	0.040	0.160	0.160
Technical specification limit	10.0	10.0	10.0	10.0	10.0	10.0	10.0	10.0	10.0	10.0	10.0	10.0
Indicator value	0.9	0.4	0.7	0.5	1.6	0.6	0.4	0.9	0.5	0.4	1.6	1.6

Licensee Comments:

6/03: Effective May 2003 the RCS Leakage being recorded is RCS TOTAL leakage versus RCS IDENTIFIED leakage. RCS Identified Leakage is generated only when RCS Total Leakage exceeds 1 GPM.

### Drill/Exercise Performance



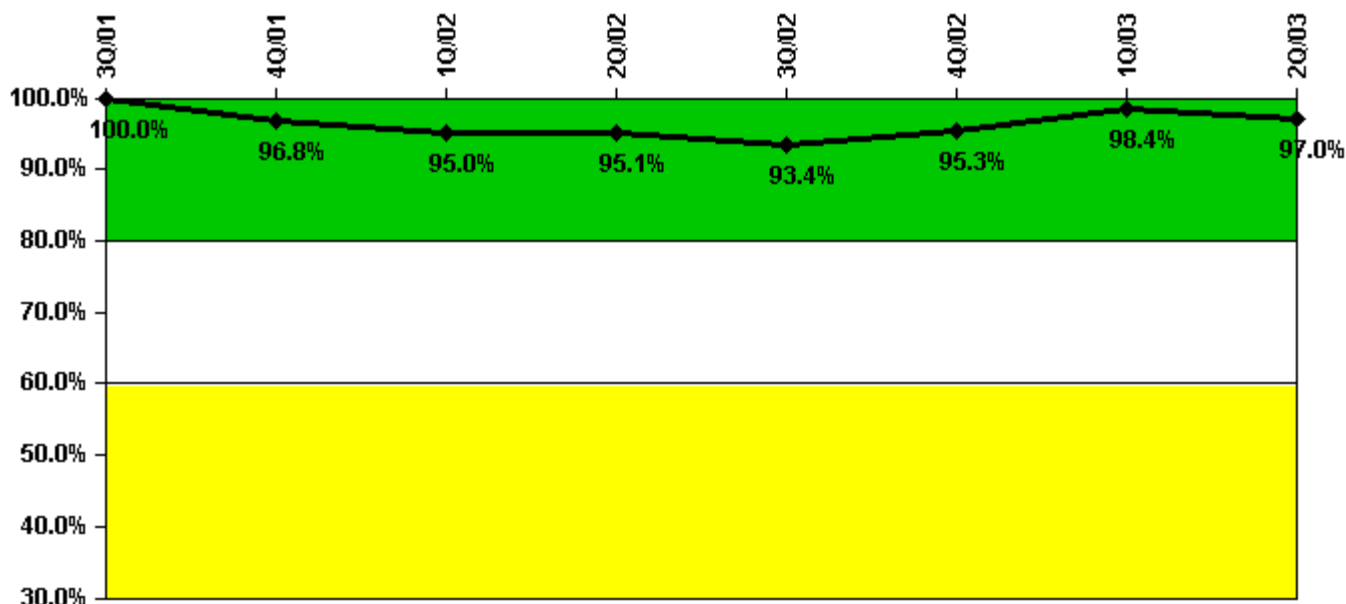
Thresholds: White < 90.0% Yellow < 70.0%

#### Notes

Drill/Exercise Performance	3Q/01	4Q/01	1Q/02	2Q/02	3Q/02	4Q/02	1Q/03	2Q/03
Successful opportunities	8.0	0	1.0	0	39.0	11.0	60.0	49.0
Total opportunities	8.0	0	3.0	0	43.0	14.0	61.0	52.0
Indicator value	97.7%	97.2%	95.0%	95.7%	92.3%	90.7%	93.2%	92.8%

Licensee Comments: none

### ERO Drill Participation



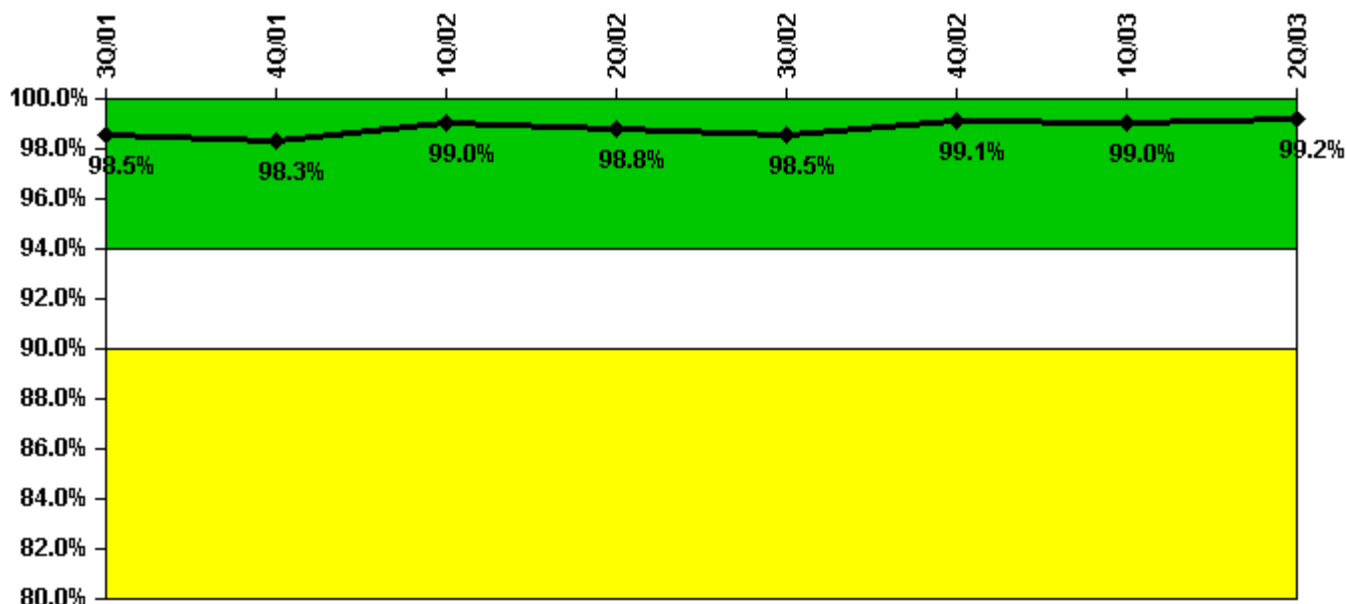
Thresholds: White < 80.0% Yellow < 60.0%

#### Notes

ERO Drill Participation	3Q/01	4Q/01	1Q/02	2Q/02	3Q/02	4Q/02	1Q/03	2Q/03
Participating Key personnel	63.0	61.0	57.0	58.0	57.0	61.0	63.0	65.0
Total Key personnel	63.0	63.0	60.0	61.0	61.0	64.0	64.0	67.0
Indicator value	100.0%	96.8%	95.0%	95.1%	93.4%	95.3%	98.4%	97.0%

Licensee Comments: none

### Alert & Notification System



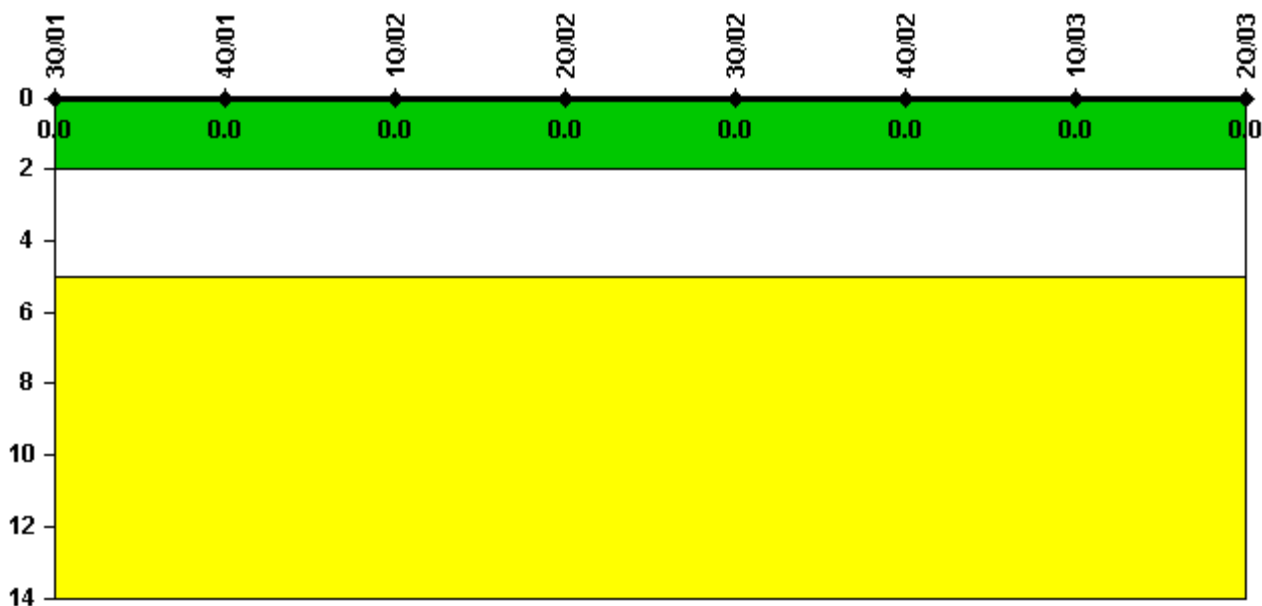
Thresholds: White < 94.0% Yellow < 90.0%

#### Notes

Alert & Notification System	3Q/01	4Q/01	1Q/02	2Q/02	3Q/02	4Q/02	1Q/03	2Q/03
Successful siren-tests	390	431	390	338	386	488	340	341
Total sirens-tests	392	441	392	343	392	490	343	343
Indicator value	98.5%	98.3%	99.0%	98.8%	98.5%	99.1%	99.0%	99.2%

Licensee Comments: none

### Occupational Exposure Control Effectiveness



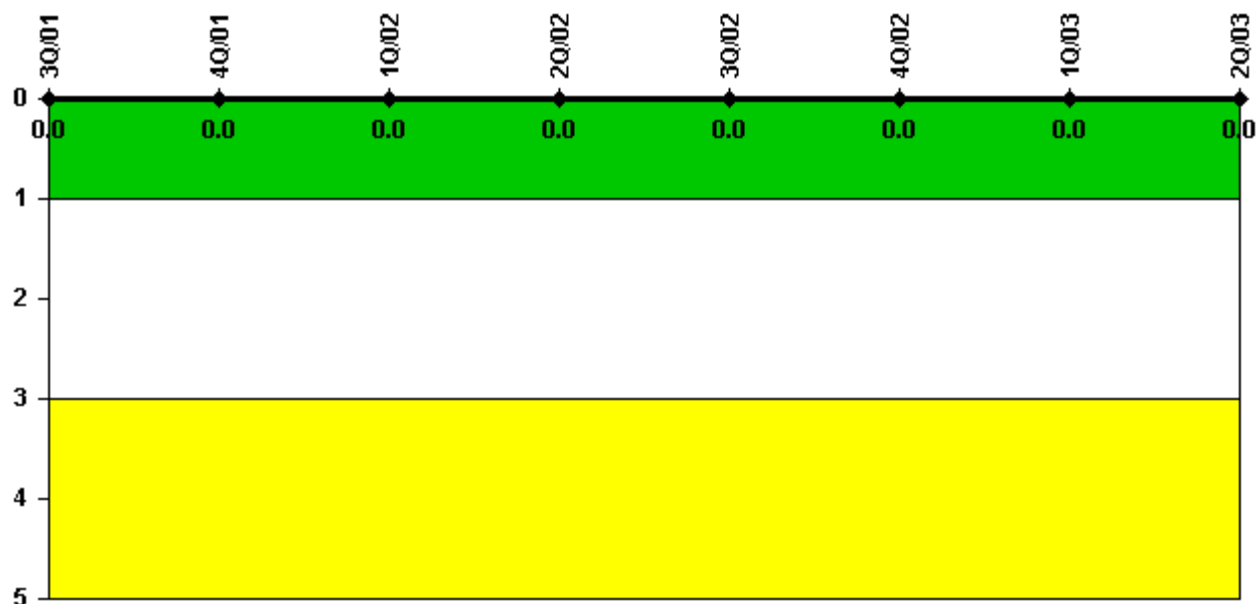
Thresholds: White > 2.0 Yellow > 5.0

#### Notes

Occupational Exposure Control Effectiveness	3Q/01	4Q/01	1Q/02	2Q/02	3Q/02	4Q/02	1Q/03	2Q/03
High radiation area occurrences	0	0	0	0	0	0	0	0
Very high radiation area occurrences	0	0	0	0	0	0	0	0
Unintended exposure occurrences	0	0	0	0	0	0	0	0
Indicator value	0	0	0	0	0	0	0	0

Licensee Comments: none

### RETS/ODCM Radiological Effluent



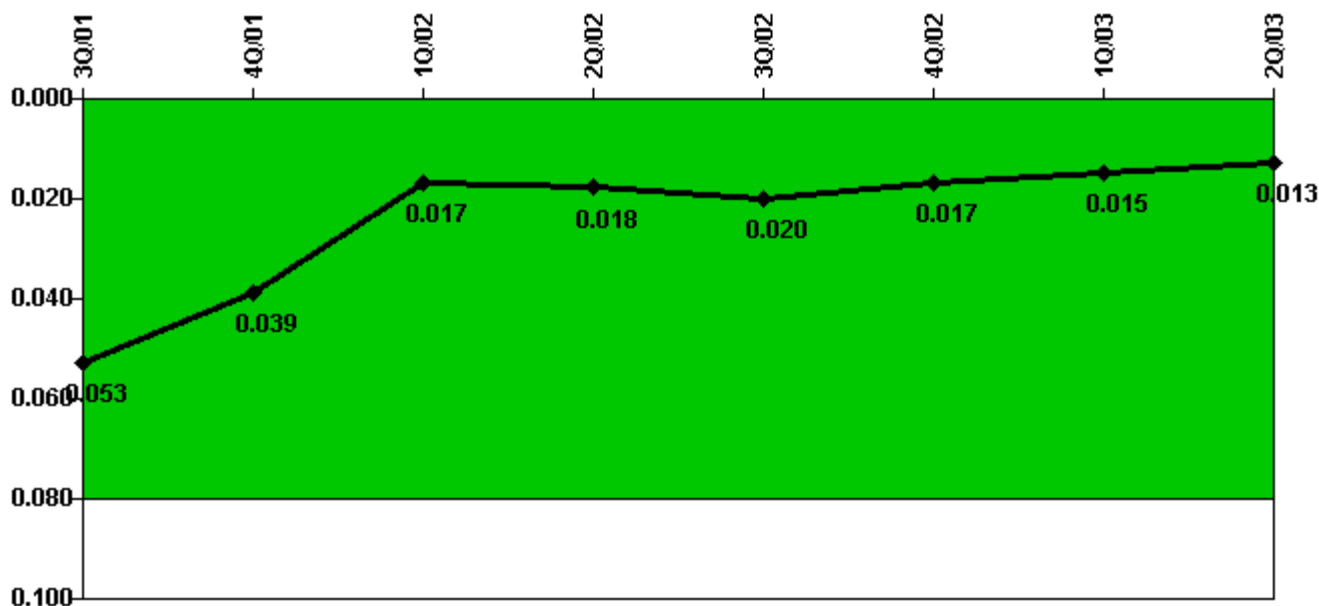
Thresholds: White > 1.0 Yellow > 3.0

#### Notes

RETS/ODCM Radiological Effluent	3Q/01	4Q/01	1Q/02	2Q/02	3Q/02	4Q/02	1Q/03	2Q/03
RETS/ODCM occurrences	0	0	0	0	0	0	0	0
Indicator value	0	0	0	0	0	0	0	0

Licensee Comments: none

### Protected Area Security Performance Index



Thresholds: White > 0.080

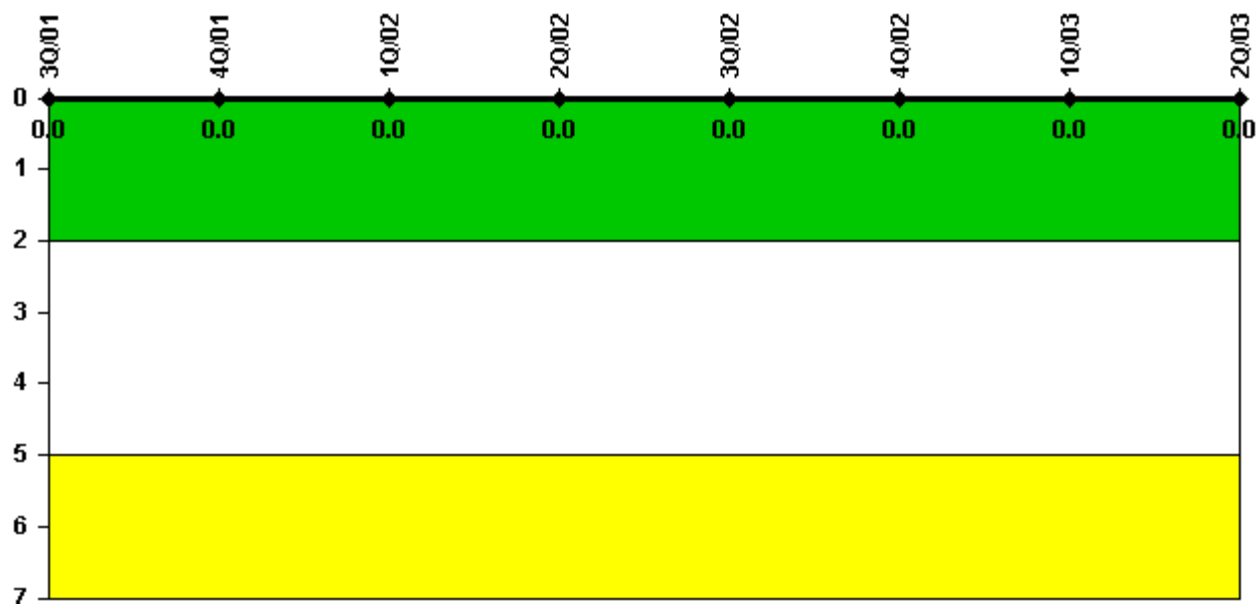
#### Notes

Protected Area Security Performance Index	3Q/01	4Q/01	1Q/02	2Q/02	3Q/02	4Q/02	1Q/03	2Q/03
IDS compensatory hours	65.60	82.30	40.90	141.20	145.30	15.70	18.60	89.10
CCTV compensatory hours	73.4	0	4.5	1.2	0	1.8	0	0
IDS normalization factor	1.20	1.20	1.20	1.20	1.20	1.20	1.20	1.20
CCTV normalization factor	1.0	1.8	1.8	1.8	1.8	1.8	1.8	1.8
Index Value	0.053	0.039	0.017	0.018	0.020	0.017	0.015	0.013

Licensee Comments: none



### Personnel Screening Program



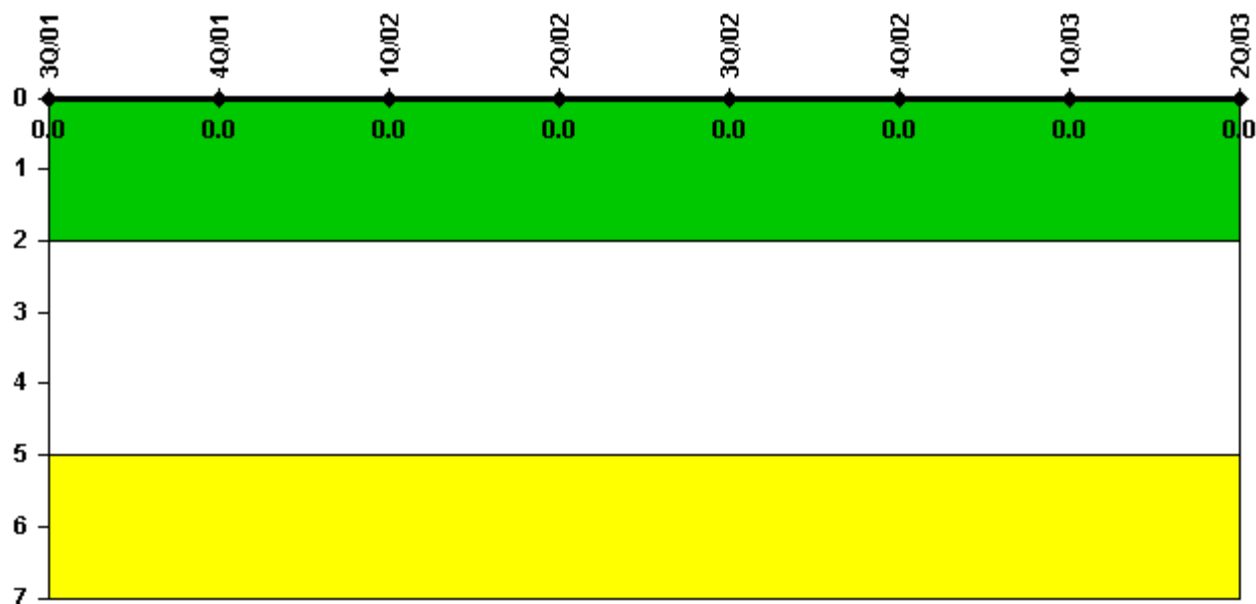
Thresholds: White > 2.0 Yellow > 5.0

#### Notes

Personnel Screening Program	3Q/01	4Q/01	1Q/02	2Q/02	3Q/02	4Q/02	1Q/03	2Q/03
Program failures	0	0	0	0	0	0	0	0
Indicator value	0	0	0	0	0	0	0	0

Licensee Comments: none

### FFD/Personnel Reliability



Thresholds: White > 2.0 Yellow > 5.0

#### Notes

FFD/Personnel Reliability	3Q/01	4Q/01	1Q/02	2Q/02	3Q/02	4Q/02	1Q/03	2Q/03
Program Failures	0	0	0	0	0	0	0	0
Indicator value	0	0	0	0	0	0	0	0

Licensee Comments: none

▲ [PI Summary](#) | [Inspection Findings Summary](#) | [Reactor Oversight Process](#)

Last Modified: July 22, 2003