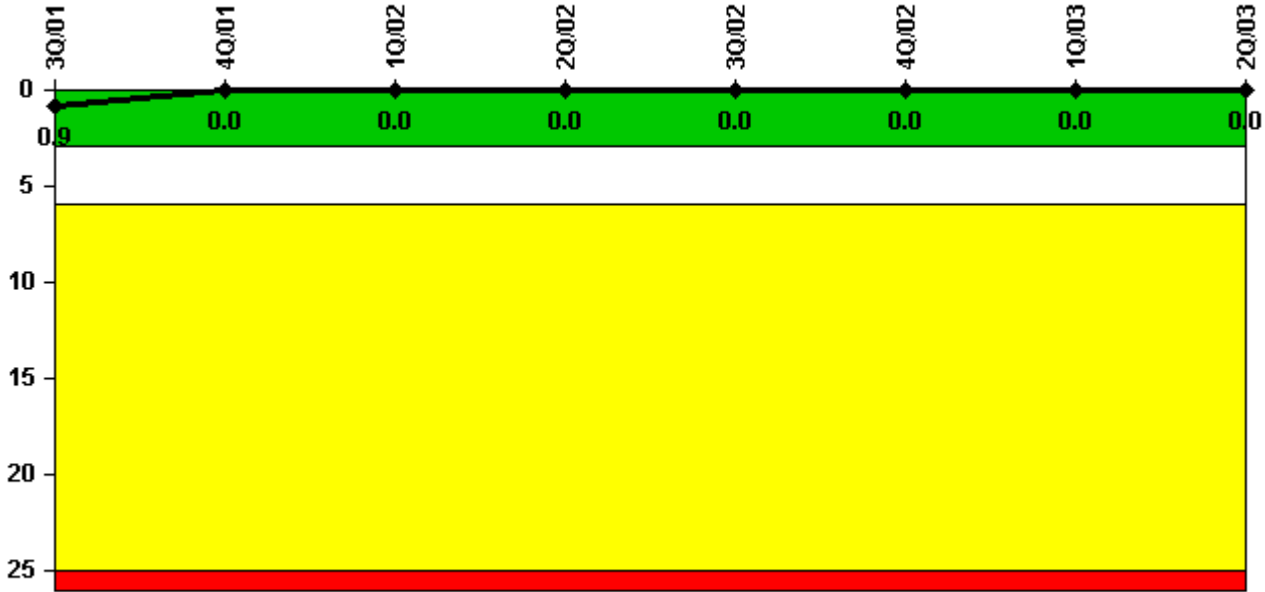


# Point Beach 1

## 2Q/2003 Performance Indicators

Licensee's General Comments: none

### Unplanned Scrams per 7000 Critical Hrs



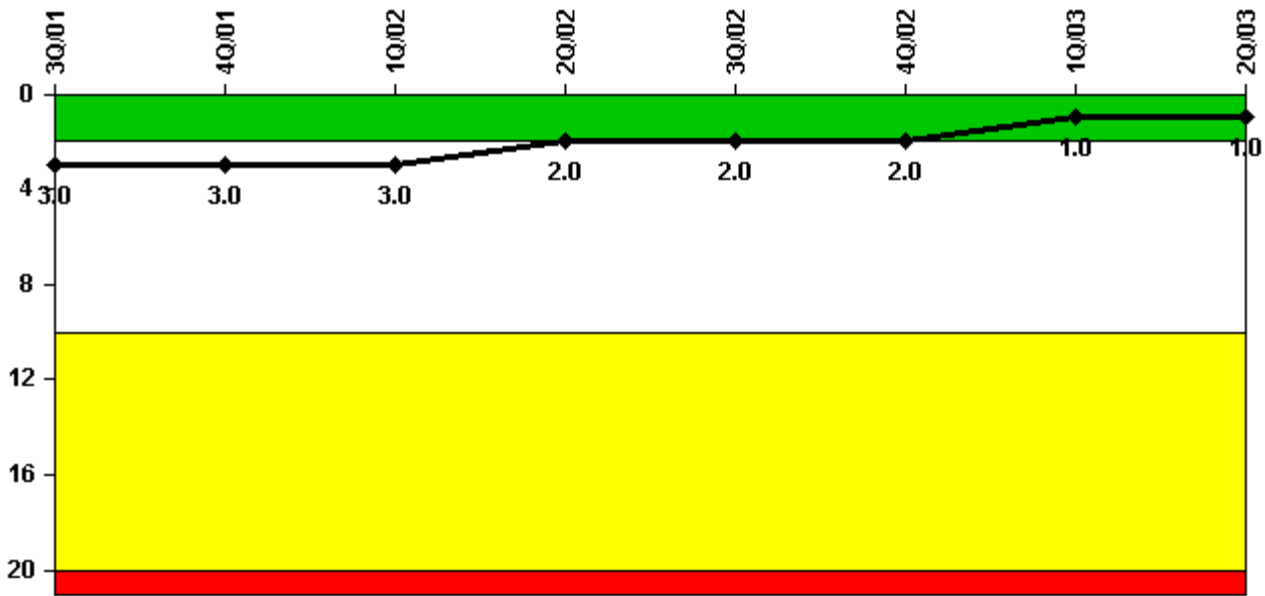
Thresholds: White > 3.0 Yellow > 6.0 Red > 25.0

### Notes

Unplanned Scrams per 7000 Critical Hrs	3Q/01	4Q/01	1Q/02	2Q/02	3Q/02	4Q/02	1Q/03	2Q/03
Unplanned scrams	0	0	0	0	0	0	0	0
Critical hours	1961.6	2209.0	2160.0	2183.0	1802.5	1844.1	2160.0	2183.0
Indicator value	0.9	0	0	0	0	0	0	0

Licensee Comments: none

### Scrams with Loss of Normal Heat Removal



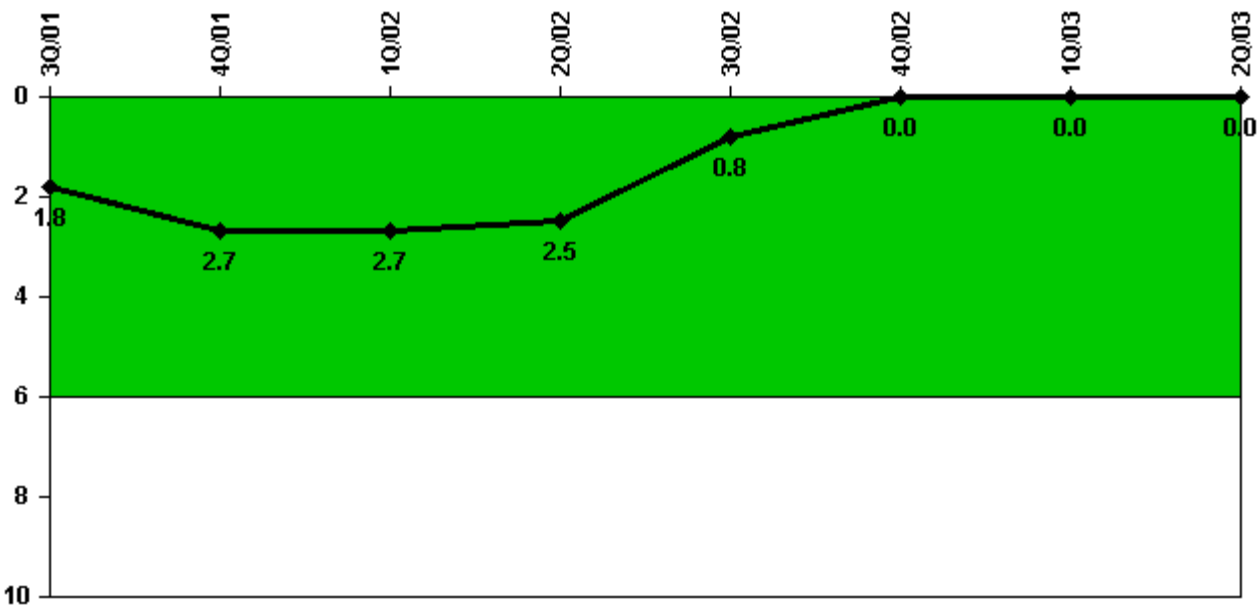
Thresholds: White > 2.0 Yellow > 10.0 Red > 20.0

#### Notes

Scrams with Loss of Normal Heat Removal	3Q/01	4Q/01	1Q/02	2Q/02	3Q/02	4Q/02	1Q/03	2Q/03
Scrams	0	0	0	0	0	0	0	0
Indicator value	3.0	3.0	3.0	2.0	2.0	2.0	1.0	1.0

Licensee Comments: none

### Unplanned Power Changes per 7000 Critical Hrs



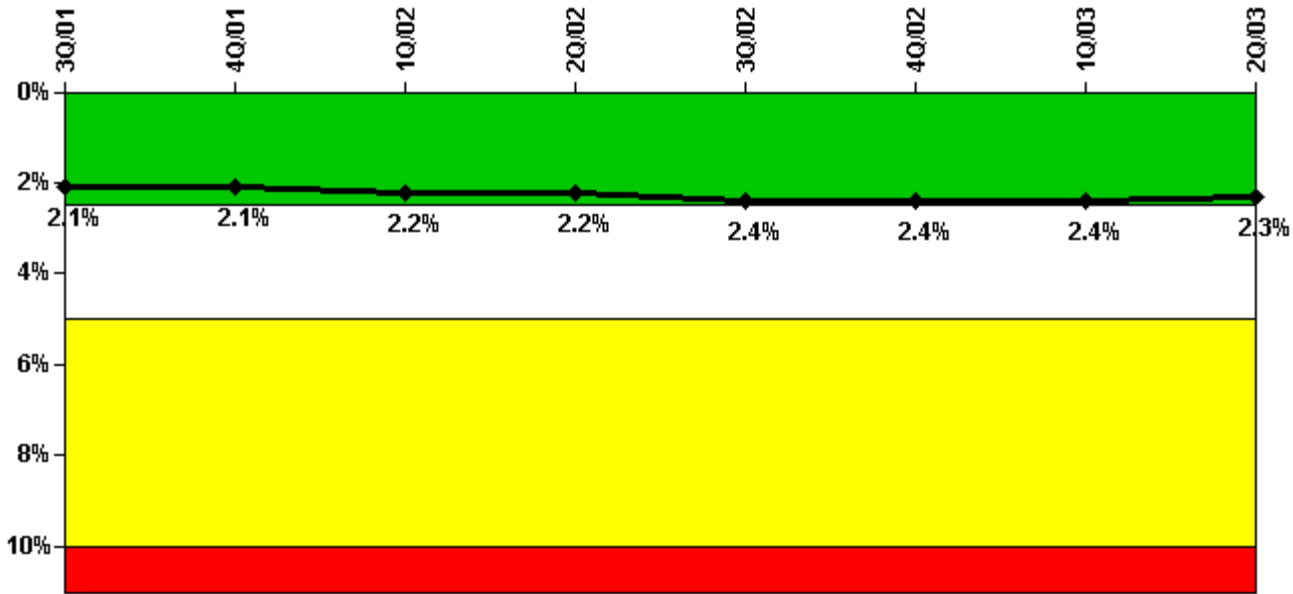
Thresholds: White > 6.0

#### Notes

Unplanned Power Changes per 7000 Critical Hrs	3Q/01	4Q/01	1Q/02	2Q/02	3Q/02	4Q/02	1Q/03	2Q/03
Unplanned power changes	2.0	1.0	0	0	0	0	0	0
Critical hours	1961.6	2209.0	2160.0	2183.0	1802.5	1844.1	2160.0	2183.0
Indicator value	1.8	2.7	2.7	2.5	0.8	0	0	0

Licensee Comments: none

### Safety System Unavailability, Emergency AC Power



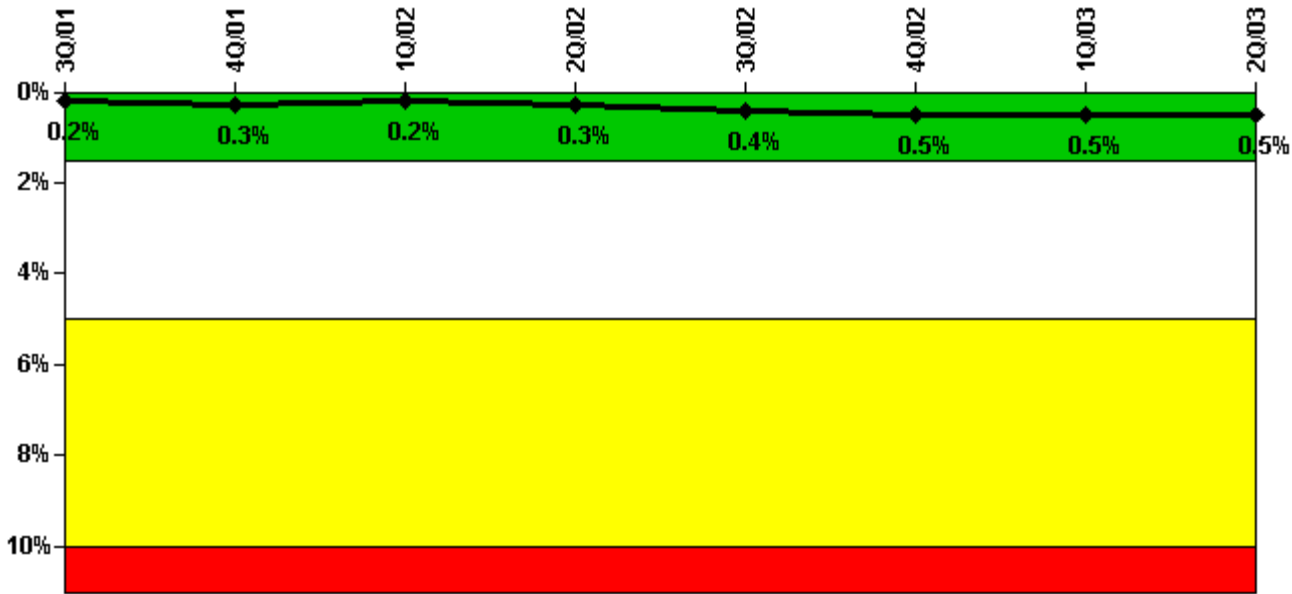
Thresholds: White > 2.5% Yellow > 5.0% Red > 10.0%

#### Notes

Safety System Unavailability, Emergency AC Power	3Q/01	4Q/01	1Q/02	2Q/02	3Q/02	4Q/02	1Q/03	2Q/03
<b>Train 1</b>								
Planned unavailable hours	12.37	21.07	18.39	27.53	27.12	17.15	12.65	12.13
Unplanned unavailable hours	0	0	0	2.60	2.12	0	0	0
Fault exposure hours	0	0	0	0	0	0	0	0
Effective Reset hours	0	0	0	0	0	0	0	0
Required hours	2208.00	2209.00	2160.00	2183.00	2208.00	2209.00	2160.00	2183.00
<b>Train 2</b>								
Planned unavailable hours	22.59	24.60	13.76	16.02	68.57	10.97	17.97	10.90
Unplanned unavailable hours	0	0	1.98	0	2.20	0	0	0
Fault exposure hours	0	0	0	0	0	0	0	0
Effective Reset hours	0	0	0	0	0	0	0	0
Required hours	2208.00	2209.00	2160.00	2183.00	2208.00	2209.00	2160.00	2183.00
Indicator value	2.1%	2.1%	2.2%	2.2%	2.4%	2.4%	2.4%	2.3%

Licensee Comments: none

### Safety System Unavailability, High Pressure Injection System (HPSI)



Thresholds: White > 1.5% Yellow > 5.0% Red > 10.0%

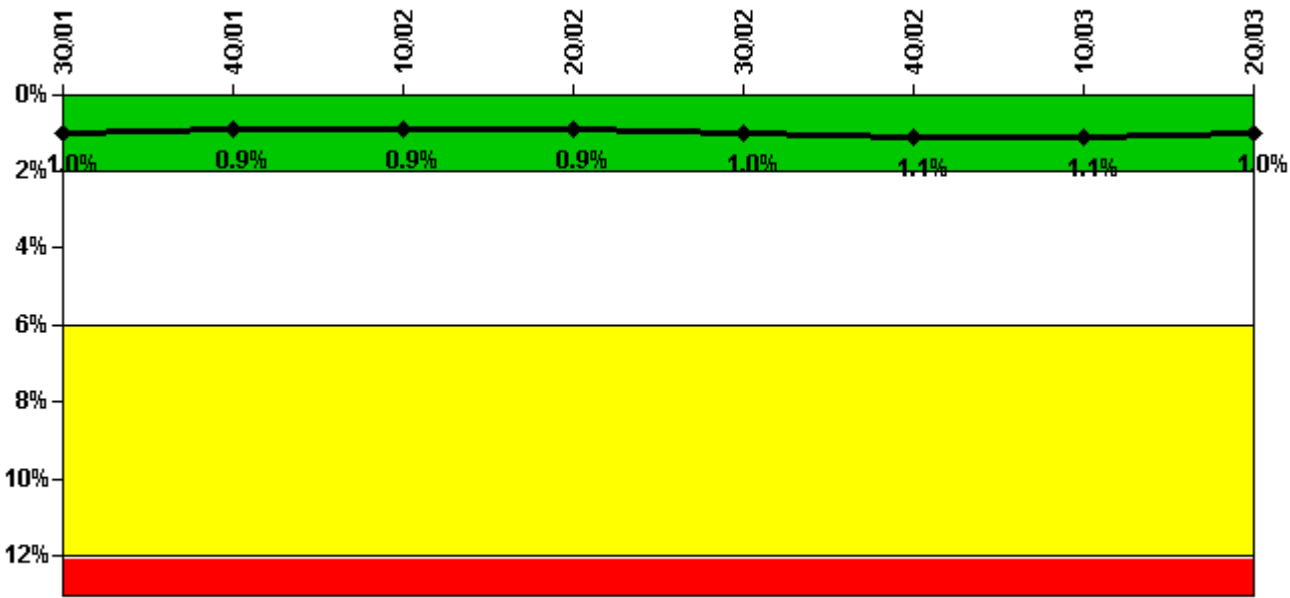
**Notes**

Safety System Unavailability, High Pressure Injection System (HPSI)	3Q/01	4Q/01	1Q/02	2Q/02	3Q/02	4Q/02	1Q/03	2Q/03
<b>Train 1</b>								
Planned unavailable hours	3.92	23.18	9.91	24.65	11.33	26.67	6.37	2.07
Unplanned unavailable hours	0	0	0	0	0	0	0	0
Fault exposure hours	0	0	0	0	0	0	0	0
Effective Reset hours	0	0	0	0	0	0	0	0
Required hours	1961.60	2209.00	2160.00	2183.00	1812.30	1910.00	2160.00	2183.00
<b>Train 2</b>								
Planned unavailable hours	2.34	12.57	11.27	24.08	13.17	19.38	16.74	3.41
Unplanned unavailable hours	0	0	0	0	0	0	0	0
Fault exposure hours	0	0	0	0	0	0	0	0
Effective Reset hours	0	0	0	0	0	0	0	0
Required hours	1961.60	2209.00	2160.00	2183.00	1812.30	1910.00	2160.00	2183.00
Indicator value	0.2%	0.3%	0.2%	0.3%	0.4%	0.5%	0.5%	0.5%

Licensee Comments:

1Q/03: Planned Unavailable hours for Train 1 were initially over-reported as 17.47 hours, due to a data transfer (accounting) error. This change corrects the Planned Unavailable hours for Train 1 to 6.37 hours.

### Safety System Unavailability, Heat Removal System (AFW)



Thresholds: White > 2.0% Yellow > 6.0% Red > 12.0%

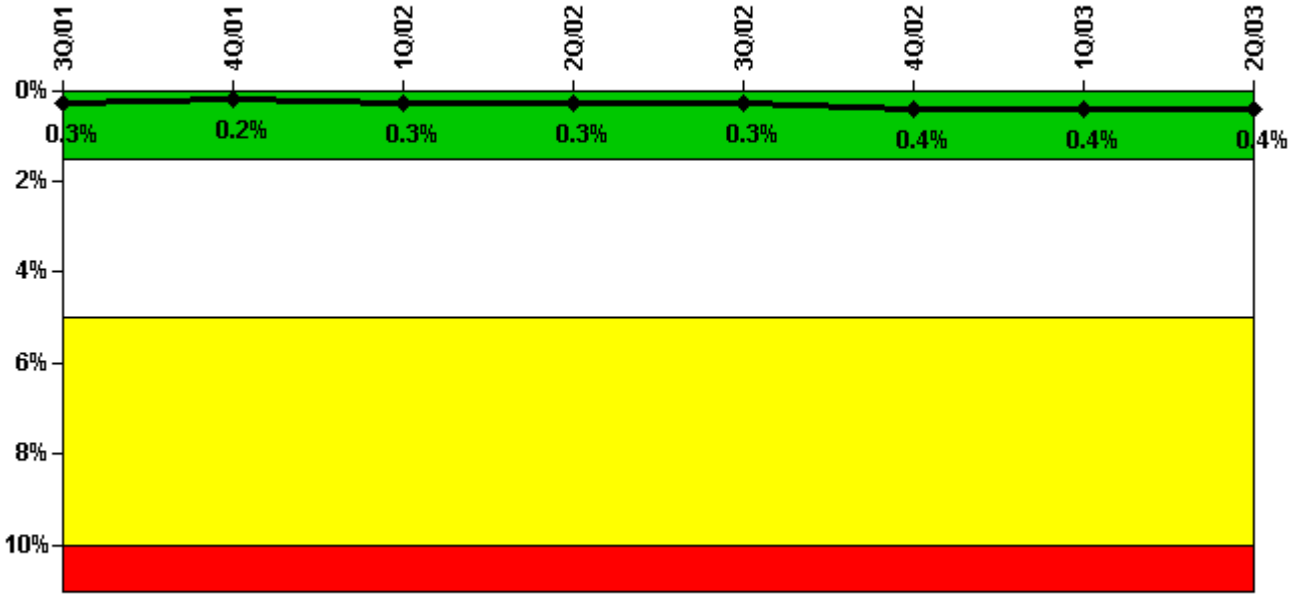
**Notes**

Safety System Unavailability, Heat Removal System (AFW)	3Q/01	4Q/01	1Q/02	2Q/02	3Q/02	4Q/02	1Q/03	2Q/03
<b>Train 1</b>								
Planned unavailable hours	25.30	4.26	25.46	8.11	25.91	20.06	29.48	6.01
Unplanned unavailable hours	0	27.53	0	0	0	2.63	0	0
Fault exposure hours	0	13.23	0	0	0	0	0	0
Effective Reset hours	0	0	0	0	0	0	0	0
Required hours	2016.00	2209.00	2160.00	2183.00	1812.32	1910.00	2160.00	2183.00
<b>Train 2</b>								
Planned unavailable hours	6.60	3.23	12.90	12.80	3.73	43.19	30.23	6.41
Unplanned unavailable hours	0	0	0	0	0	2.63	0	0
Fault exposure hours	0	0	0	0	0	0	0	0
Effective Reset hours	0	0	0	0	0	0	0	0
Required hours	2016.00	2209.00	2160.00	2183.00	1812.32	1910.00	2160.00	2183.00
<b>Train 3</b>								
Planned unavailable hours	13.69	2.62	13.95	63.72	2.37	36.08	22.25	5.70
Unplanned unavailable hours	0	0	8.47	0	0	2.63	0	0
Fault exposure hours	0	0	0	0	0	0	0	0
Effective Reset hours	0	0	0	0	0	0	0	0
Required hours	2016.00	2209.00	2160.00	2183.00	1812.32	1910.00	2160.00	2183.00
<b>Indicator value</b>	<b>1.0%</b>	<b>0.9%</b>	<b>0.9%</b>	<b>0.9%</b>	<b>1.0%</b>	<b>1.1%</b>	<b>1.1%</b>	<b>1.0%</b>

Licensee Comments:

2Q/03: 18,028 hours fault exposure excluded from indicators per FAQ ID 348. Failure was not capable of being discovered during normal surveillance testing.

### Safety System Unavailability, Residual Heat Removal System



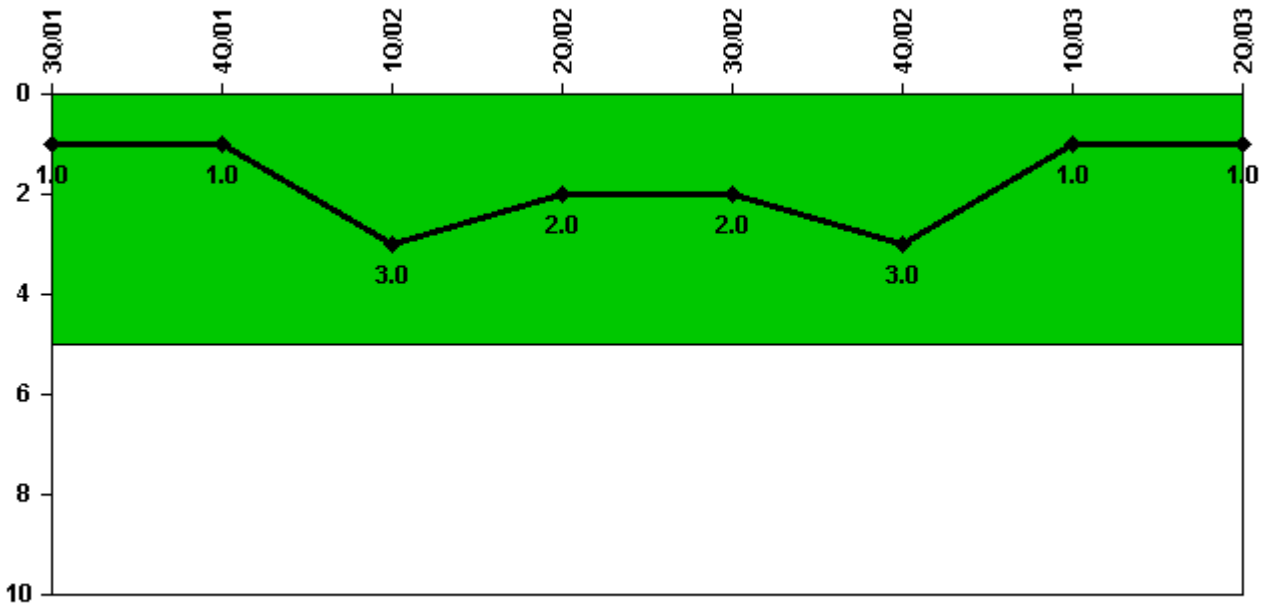
Thresholds: White > 1.5% Yellow > 5.0% Red > 10.0%

#### Notes

Safety System Unavailability, Residual Heat Removal System	3Q/01	4Q/01	1Q/02	2Q/02	3Q/02	4Q/02	1Q/03	2Q/03
<b>Train 1</b>								
Planned unavailable hours	28.22	3.24	27.81	0.85	20.64	13.61	1.45	0.45
Unplanned unavailable hours	0	0	0	0	0	0	0	0
Fault exposure hours	0	0	0	0	0	0	0	0
Effective Reset hours	0	0	0	0	0	0	0	0
Required hours	2208.00	2209.00	2160.00	2183.00	2140.70	2209.00	2160.00	2183.00
<b>Train 2</b>								
Planned unavailable hours	7.80	2.36	0.45	0.57	14.33	1.83	1.46	1.08
Unplanned unavailable hours	0	0	0	0	0	0	0	0
Fault exposure hours	0	0	0	0	0	0	0	0
Effective Reset hours	0	0	0	0	0	0	0	0
Required hours	2208.00	2209.00	2160.00	2183.00	2140.70	2209.00	2160.00	2183.00
<b>Indicator value</b>	<b>0.3%</b>	<b>0.2%</b>	<b>0.3%</b>	<b>0.3%</b>	<b>0.3%</b>	<b>0.4%</b>	<b>0.4%</b>	<b>0.4%</b>

Licensee Comments: none

### Safety System Functional Failures (PWR)



Thresholds: White > 5.0

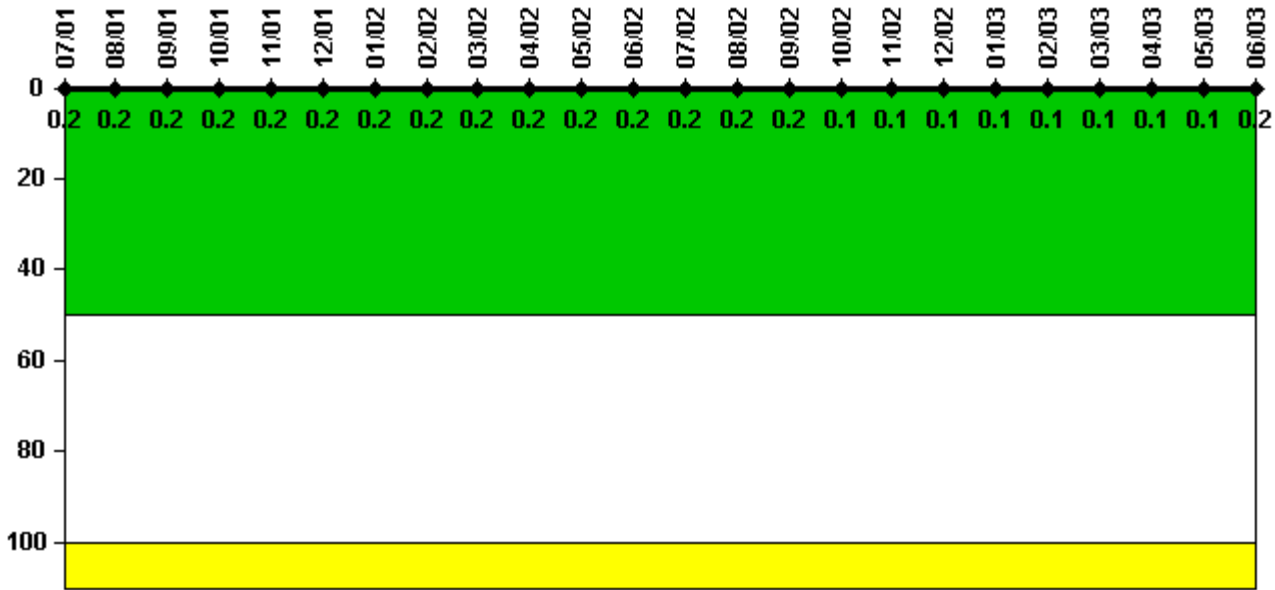
### Notes

Safety System Functional Failures (PWR)	3Q/01	4Q/01	1Q/02	2Q/02	3Q/02	4Q/02	1Q/03	2Q/03
Safety System Functional Failures	0	0	2	0	0	1	0	0
Indicator value	1	1	3	2	2	3	1	1

Licensee Comments: none



### Reactor Coolant System Activity



Thresholds: White > 50.0 Yellow > 100.0

**Notes**

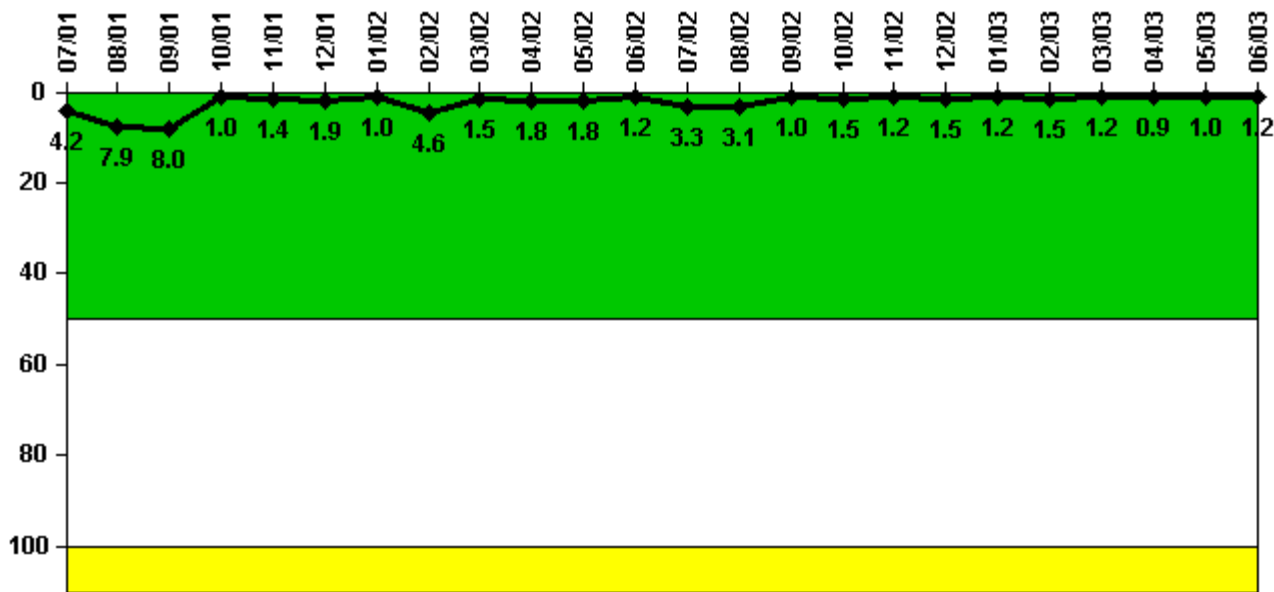
Reactor Coolant System Activity	7/01	8/01	9/01	10/01	11/01	12/01	1/02	2/02	3/02	4/02	5/02	6/02
Maximum activity	0.001260	0.001370	0.001250	0.001350	0.001420	0.001500	0.001530	0.001610	0.001650	0.001630	0.001720	0.001750
Technical specification limit	0.8	0.8	0.8	0.8	0.8	0.8	0.8	0.8	0.8	0.8	0.8	0.8
Indicator value	0.2	0.2	0.2	0.2	0.2	0.2	0.2	0.2	0.2	0.2	0.2	0.2

Reactor Coolant System Activity	7/02	8/02	9/02	10/02	11/02	12/02	1/03	2/03	3/03	4/03	5/03	6/03
Maximum activity	0.001780	0.001940	0.001820	0.000867	0.000945	0.000987	0.001030	0.001080	0.001080	0.001160	0.001190	0.001200
Technical specification limit	0.8	0.8	0.8	0.8	0.8	0.8	0.8	0.8	0.8	0.8	0.8	0.8
Indicator value	0.2	0.2	0.2	0.1	0.1	0.1	0.1	0.1	0.1	0.1	0.1	0.2

Licensee Comments: none

### Reactor Coolant System Leakage



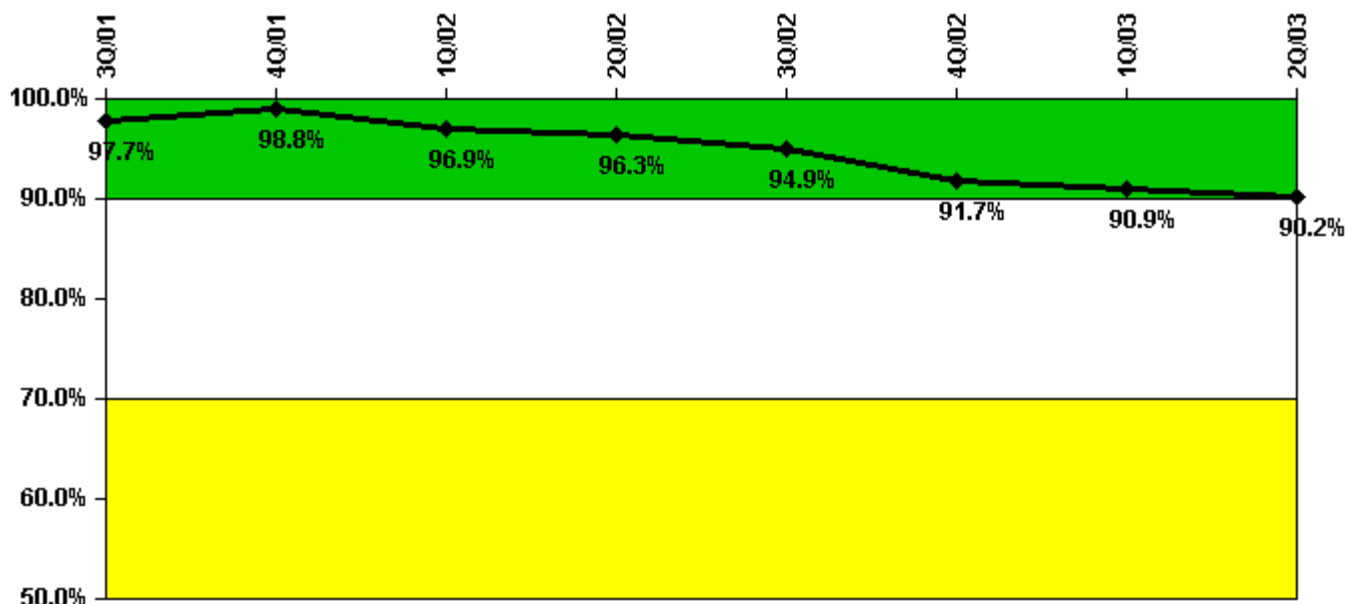
Thresholds: White > 50.0 Yellow > 100.0

Notes

Reactor Coolant System Leakage	7/01	8/01	9/01	10/01	11/01	12/01	1/02	2/02	3/02	4/02	5/02	6/02
Maximum leakage	0.420	0.786	0.800	0.096	0.140	0.186	0.100	0.460	0.150	0.180	0.180	0.120
Technical specification limit	10.0	10.0	10.0	10.0	10.0	10.0	10.0	10.0	10.0	10.0	10.0	10.0
Indicator value	4.2	7.9	8.0	1.0	1.4	1.9	1.0	4.6	1.5	1.8	1.8	1.2
Reactor Coolant System Leakage	7/02	8/02	9/02	10/02	11/02	12/02	1/03	2/03	3/03	4/03	5/03	6/03
Maximum leakage	0.330	0.310	0.100	0.150	0.120	0.150	0.120	0.150	0.120	0.090	0.100	0.120
Technical specification limit	10.0	10.0	10.0	10.0	10.0	10.0	10.0	10.0	10.0	10.0	10.0	10.0
Indicator value	3.3	3.1	1.0	1.5	1.2	1.5	1.2	1.5	1.2	0.9	1.0	1.2

Licensee Comments: none

### Drill/Exercise Performance



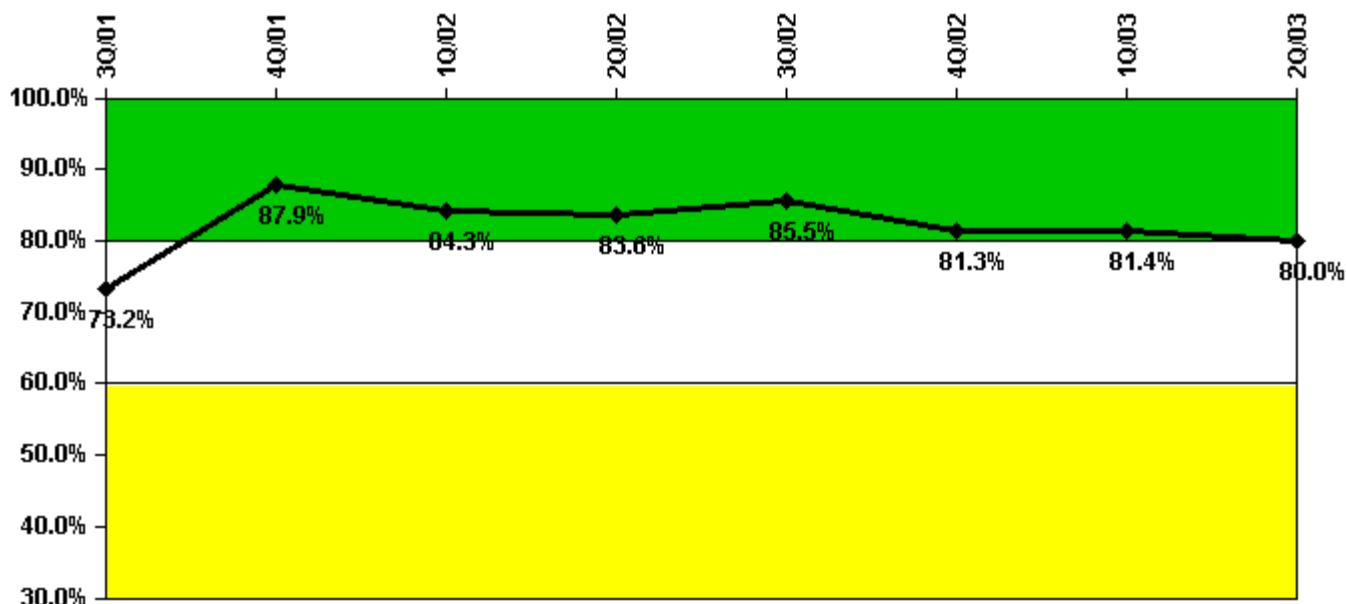
Thresholds: White < 90.0% Yellow < 70.0%

#### Notes

Drill/Exercise Performance	3Q/01	4Q/01	1Q/02	2Q/02	3Q/02	4Q/02	1Q/03	2Q/03
Successful opportunities	4.0	15.0	10.0	0	9.0	0	0	8.0
Total opportunities	4.0	16.0	12.0	0	10.0	0	0	9.0
Indicator value	97.7%	98.8%	96.9%	96.3%	94.9%	91.7%	90.9%	90.2%

Licensee Comments: none

### ERO Drill Participation



Thresholds: White < 80.0% Yellow < 60.0%

#### Notes

ERO Drill Participation	3Q/01	4Q/01	1Q/02	2Q/02	3Q/02	4Q/02	1Q/03	2Q/03
Participating Key personnel	41.0	58.0	59.0	56.0	53.0	52.0	48.0	48.0
Total Key personnel	56.0	66.0	70.0	67.0	62.0	64.0	59.0	60.0
Indicator value	73.2%	87.9%	84.3%	83.6%	85.5%	81.3%	81.4%	80.0%

#### Licensee Comments:

2Q/03: Revised data to correctly include the control room communicator as part of the ERO.

1Q/03: Revised data to correctly include the control room communicator as part of the ERO.

4Q/02: Revised data to correctly include the control room communicator as part of the ERO.

3Q/02: Revised data to correctly include the control room communicator as part of the ERO.

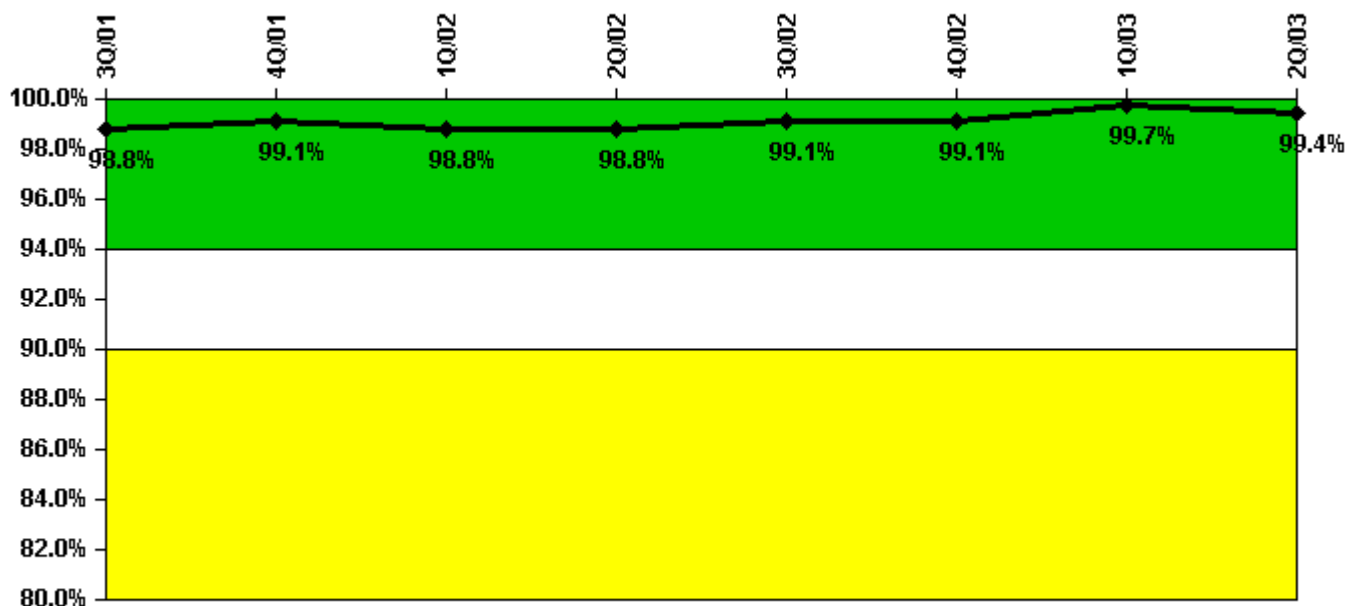
2Q/02: Revised data to correctly include the control room communicator as part of the ERO.

1Q/02: Revised data to correctly include the control room communicator as part of the ERO.

4Q/01: Revised data to correctly include the control room communicator as part of the ERO.

3Q/01: Revised data to correctly include the control room communicator as part of the ERO.

### Alert & Notification System



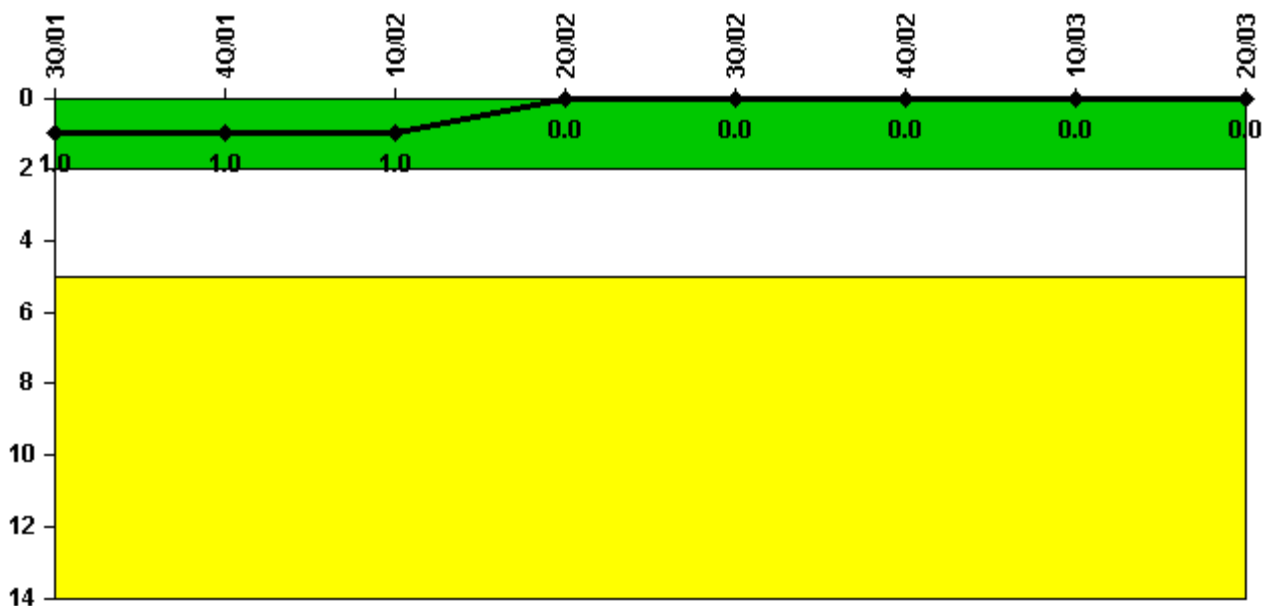
Thresholds: White < 94.0% Yellow < 90.0%

#### Notes

Alert & Notification System	3Q/01	4Q/01	1Q/02	2Q/02	3Q/02	4Q/02	1Q/03	2Q/03
Successful siren-tests	83	84	82	83	84	84	84	82
Total sirens-tests	84	84	84	84	84	84	84	84
Indicator value	98.8%	99.1%	98.8%	98.8%	99.1%	99.1%	99.7%	99.4%

Licensee Comments: none

### Occupational Exposure Control Effectiveness



Thresholds: White > 2.0 Yellow > 5.0

#### Notes

Occupational Exposure Control Effectiveness	3Q/01	4Q/01	1Q/02	2Q/02	3Q/02	4Q/02	1Q/03	2Q/03
High radiation area occurrences	0	0	0	0	0	0	0	0
Very high radiation area occurrences	0	0	0	0	0	0	0	0
Unintended exposure occurrences	0	0	0	0	0	0	0	0
Indicator value	1	1	1	0	0	0	0	0

Licensee Comments: none

### RETS/ODCM Radiological Effluent



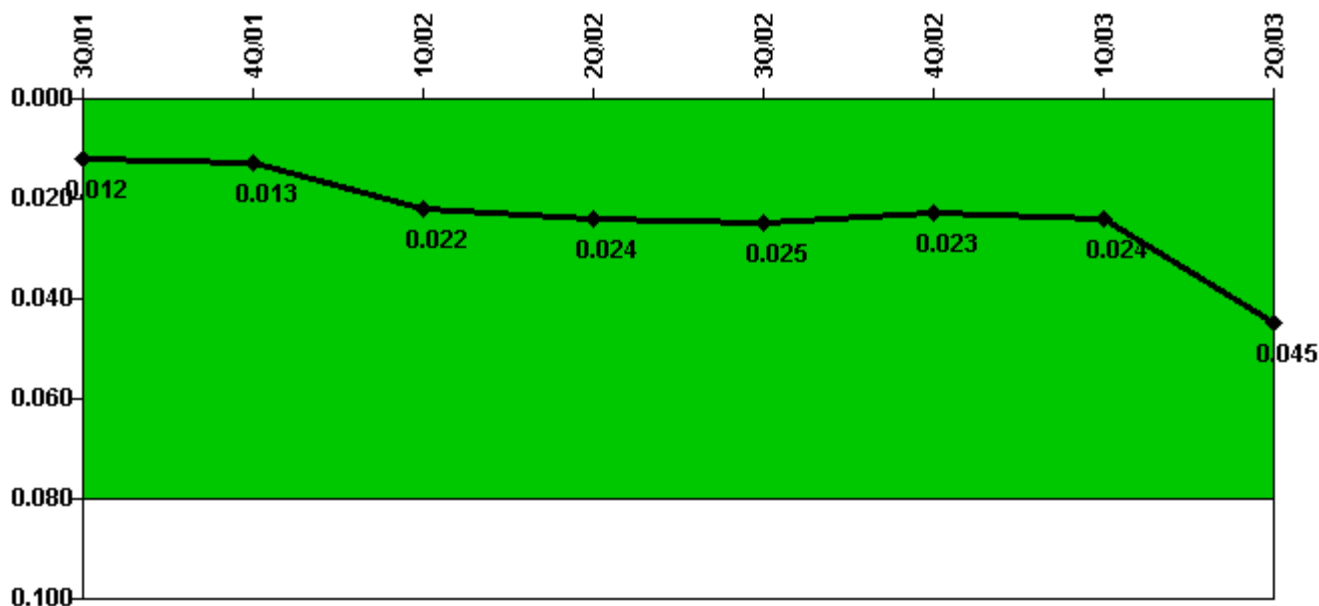
Thresholds: White > 1.0 Yellow > 3.0

#### Notes

RETS/ODCM Radiological Effluent	3Q/01	4Q/01	1Q/02	2Q/02	3Q/02	4Q/02	1Q/03	2Q/03
RETS/ODCM occurrences	0	0	0	0	0	0	0	0
Indicator value	0	0	0	0	0	0	0	0

Licensee Comments: none

### Protected Area Security Performance Index



Thresholds: White > 0.080

#### Notes

Protected Area Security Performance Index	3Q/01	4Q/01	1Q/02	2Q/02	3Q/02	4Q/02	1Q/03	2Q/03
IDS compensatory hours	109.90	71.30	187.20	51.30	129.90	27.30	214.90	462.50
CCTV compensatory hours	58.0	0	19.8	0.1	56.4	0.5	16.2	25.5
IDS normalization factor	1.20	1.20	1.20	1.20	1.20	1.20	1.20	1.20
CCTV normalization factor	1.0	1.0	1.0	1.0	1.0	1.0	1.0	1.0
Index Value	0.012	0.013	0.022	0.024	0.025	0.023	0.024	0.045

Licensee Comments: none



### Personnel Screening Program



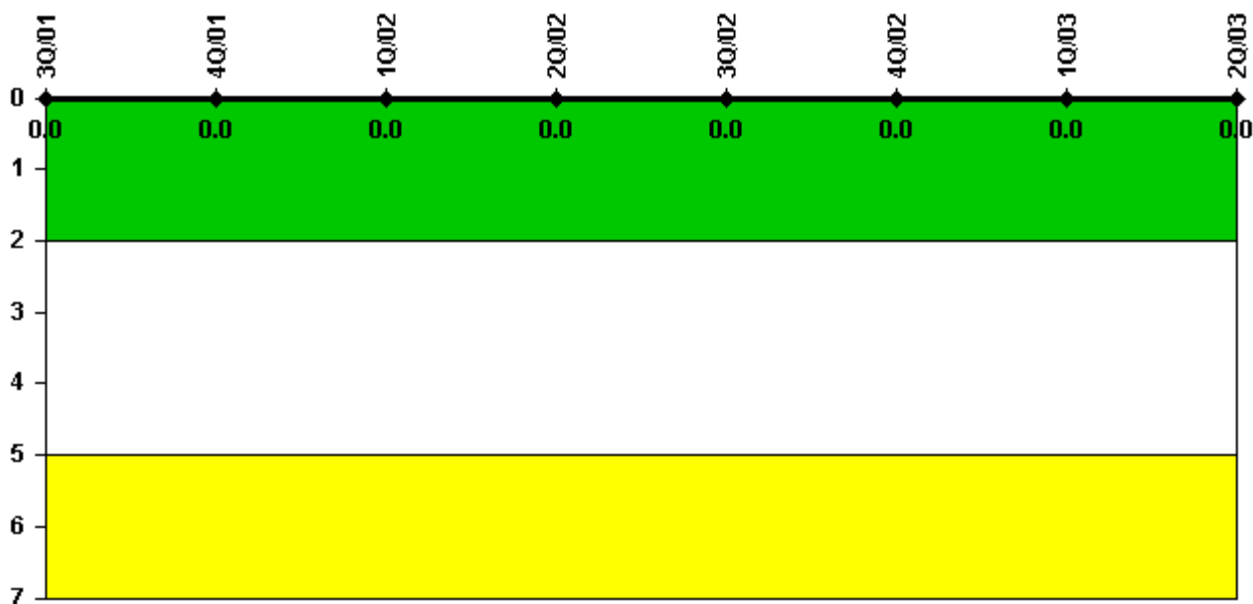
Thresholds: White > 2.0 Yellow > 5.0

#### Notes

Personnel Screening Program	3Q/01	4Q/01	1Q/02	2Q/02	3Q/02	4Q/02	1Q/03	2Q/03
Program failures	0	0	0	0	0	0	0	0
Indicator value	0	0	0	0	0	0	0	0

Licensee Comments: none

### FFD/Personnel Reliability



Thresholds: White > 2.0 Yellow > 5.0

#### Notes

FFD/Personnel Reliability	3Q/01	4Q/01	1Q/02	2Q/02	3Q/02	4Q/02	1Q/03	2Q/03
Program Failures	0	0	0	0	0	0	0	0
Indicator value	0	0	0	0	0	0	0	0

Licensee Comments: none

▲ [PI Summary](#) | [Inspection Findings Summary](#) | [Reactor Oversight Process](#)

Last Modified: August 27, 2003