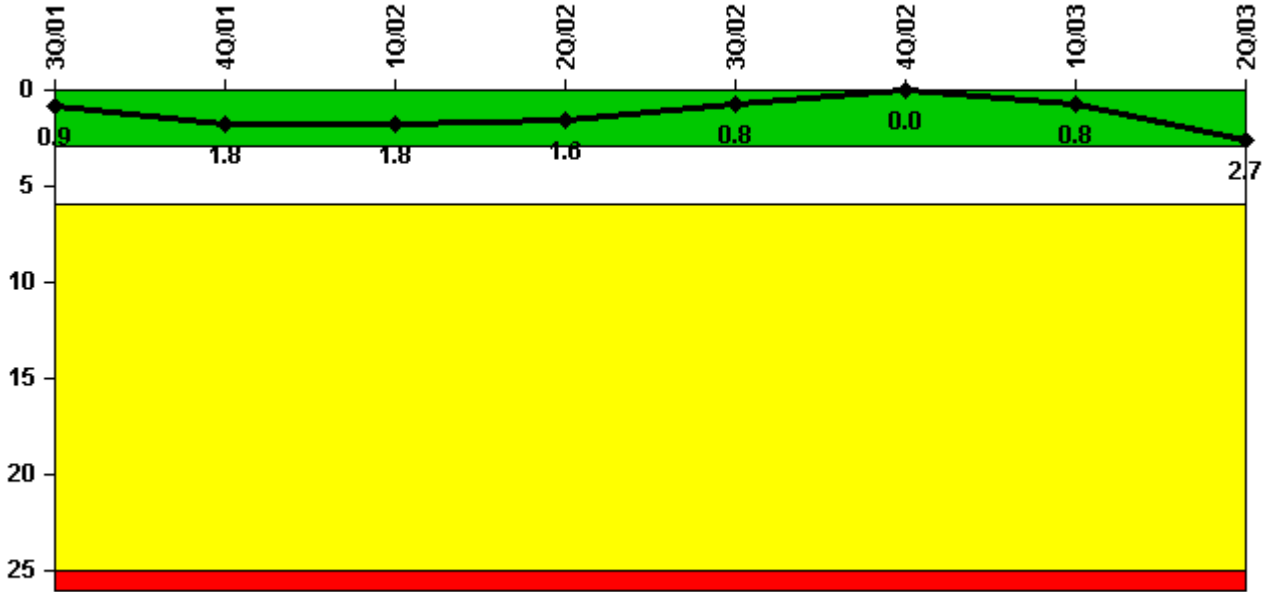


# Pilgrim 1

## 2Q/2003 Performance Indicators

Licensee's General Comments: none

### Unplanned Scrams per 7000 Critical Hrs



Thresholds: White > 3.0 Yellow > 6.0 Red > 25.0

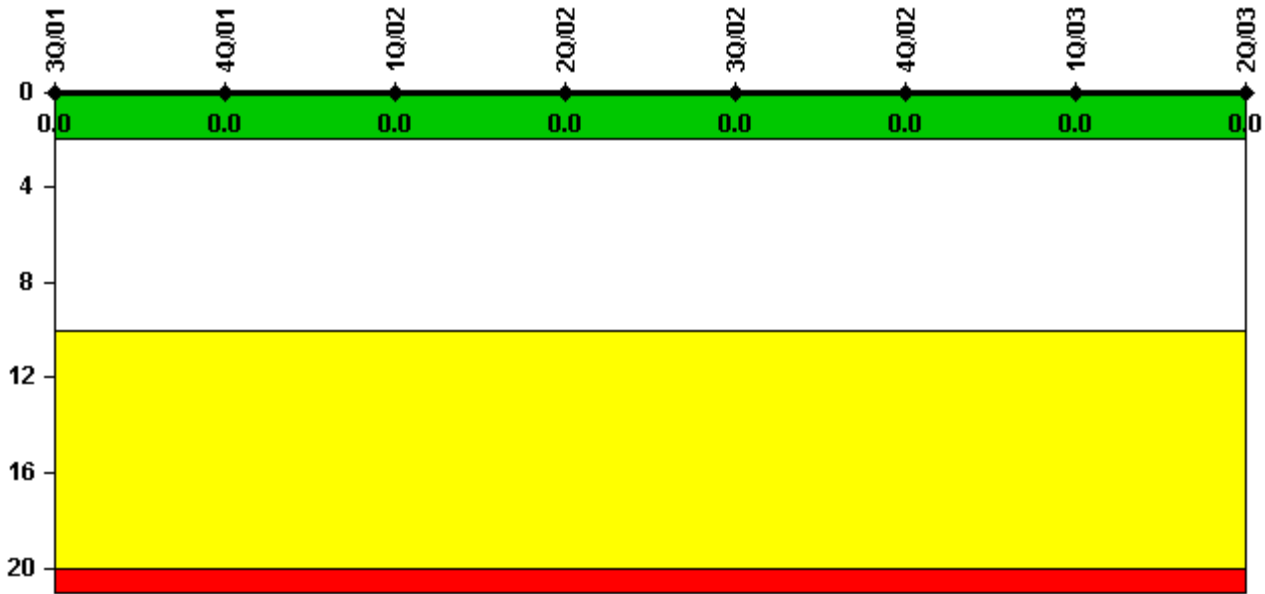
### Notes

Unplanned Scrams per 7000 Critical Hrs	3Q/01	4Q/01	1Q/02	2Q/02	3Q/02	4Q/02	1Q/03	2Q/03
Unplanned scrams	1.0	1.0	0	0	0	0	1.0	2.0
Critical hours	2115.4	2140.1	2160.0	2183.0	2208.0	2209.0	1971.0	1519.0
Indicator value	0.9	1.8	1.8	1.6	0.8	0	0.8	2.7

Licensee Comments:

2Q/03: Reflects manual scram on 2/21/202 and automatic scrams on 5/19/03 and 6/1/03.

### Scrams with Loss of Normal Heat Removal



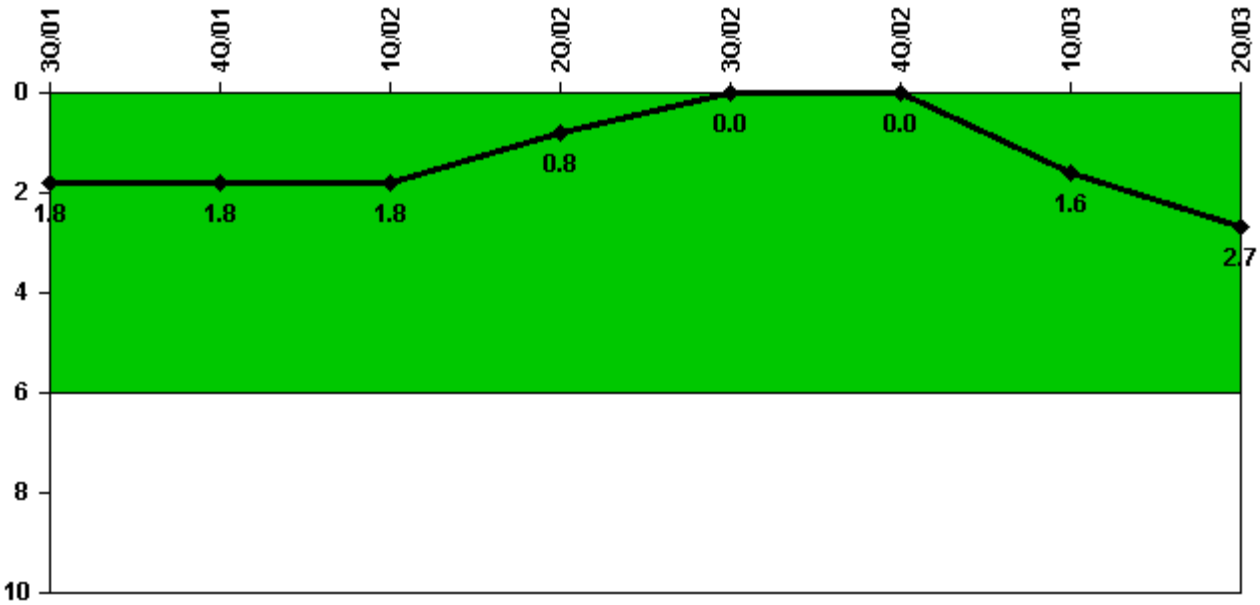
Thresholds: White > 2.0 Yellow > 10.0 Red > 20.0

#### Notes

Scrams with Loss of Normal Heat Removal	3Q/01	4Q/01	1Q/02	2Q/02	3Q/02	4Q/02	1Q/03	2Q/03
Scrams	0	0	0	0	0	0	0	0
Indicator value	0	0	0	0	0	0	0	0

Licensee Comments: none

### Unplanned Power Changes per 7000 Critical Hrs



Thresholds: White > 6.0

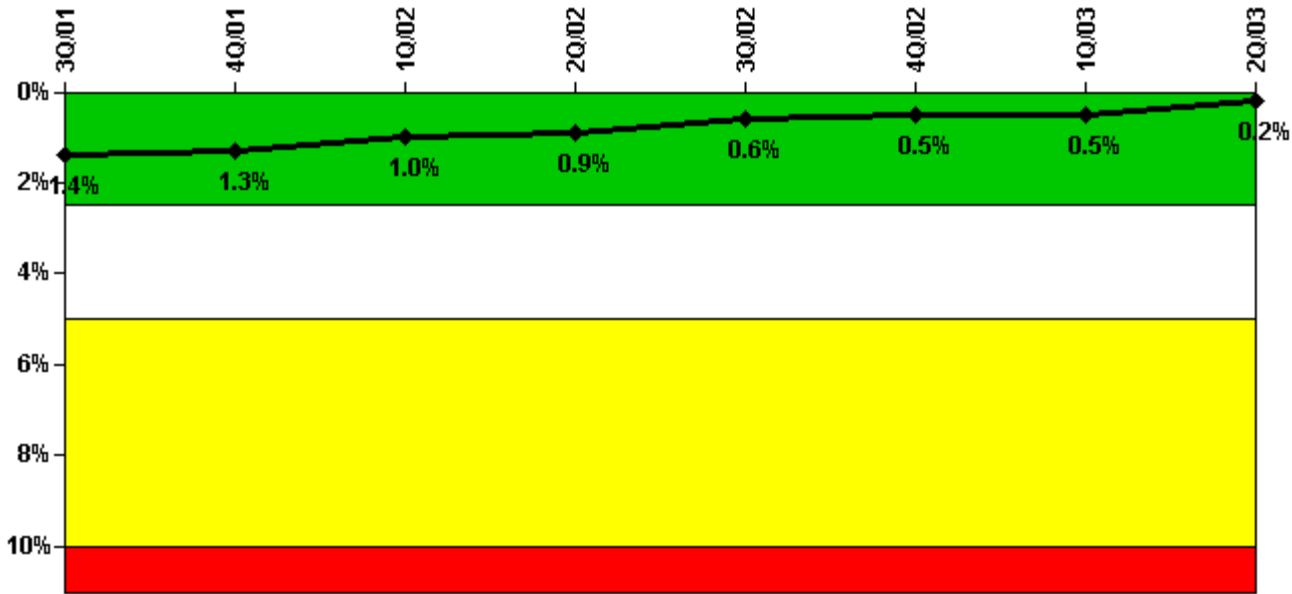
#### Notes

Unplanned Power Changes per 7000 Critical Hrs	3Q/01	4Q/01	1Q/02	2Q/02	3Q/02	4Q/02	1Q/03	2Q/03
Unplanned power changes	1.0	0	0	0	0	0	2.0	1.0
Critical hours	2115.4	2140.1	2160.0	2183.0	2208.0	2209.0	1971.0	1519.0
Indicator value	1.8	1.8	1.8	0.8	0	0	1.6	2.7

Licensee Comments:

2Q/03: Reflects unplanned power reductions greater than 20% on 2/20/2003, 3/3/2003, and most recently on 5/15/03, during startup from the 2003 refueling outage.

### Safety System Unavailability, Emergency AC Power



Thresholds: White > 2.5% Yellow > 5.0% Red > 10.0%

#### Notes

Safety System Unavailability, Emergency AC Power	3Q/01	4Q/01	1Q/02	2Q/02	3Q/02	4Q/02	1Q/03	2Q/03
<b>Train 1</b>								
Planned unavailable hours	11.05	0.99	1.20	3.55	1.83	1.53	1.01	0.88
Unplanned unavailable hours	4.87	0	0	4.00	4.70	0	0	0
Fault exposure hours	0	0	0	0	0	0	0	0
Effective Reset hours	0	0	0	0	0	0	0	0
Required hours	2181.70	2154.80	2160.00	2183.00	2208.00	2209.00	2058.00	1570.00
<b>Train 2</b>								
Planned unavailable hours	0.68	5.70	0.90	1.08	0.70	0.89	0.80	0.66
Unplanned unavailable hours	0	0	0	33.75	3.05	0	13.72	0
Fault exposure hours	0	0	0	0	0	0	0	0
Effective Reset hours	0	0	0	0	0	0	0	0
Required hours	2181.70	2154.80	2160.00	2183.00	2208.00	2209.00	2058.00	1570.00
Indicator value	1.4%	1.3%	1.0%	0.9%	0.6%	0.5%	0.5%	0.2%

#### Licensee Comments:

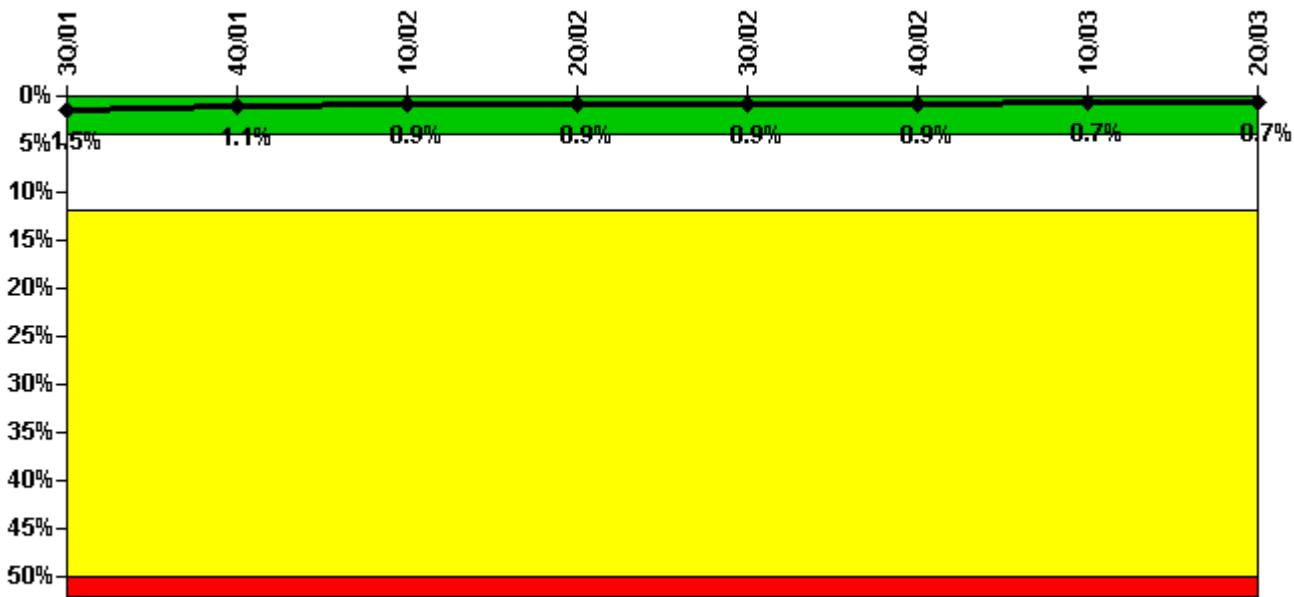
2Q/03: The indicator reflects the correction of planned unavailability hours for 2000-3Q (added 3.53 hours for Train 2), 2002-2Q (deleted 176.58 overhaul hours that were inadvertently included for Train 2), and 2002-3Q (deleted 142.22 overhaul hours that were inadvertently included for Train 1). The corrections were included in change reports for the respective quarter as part of the 2Q-2003 PI data submittal. The indicator remained in the Green band with the corrections.

3Q/02: Change to correct planned unavailability hours (revised from 144.05 to 1.83 hours) to eliminate overhaul hours that were inadvertently included. The indicator remains in the Green band.

2Q/02: Change to correct Train 2 planned unavailability hours (revised from 117.66 hours to 1.08 hours) to remove overhaul hours that were inadvertently included. The indicator remains in the Green band.

3Q/00: Revision to correct Train 2 planned unavailability hours (revised from 16 to 19.53 hours). The indicator remains in the Green band.

### Safety System Unavailability, High Pressure Injection System (HPCI)



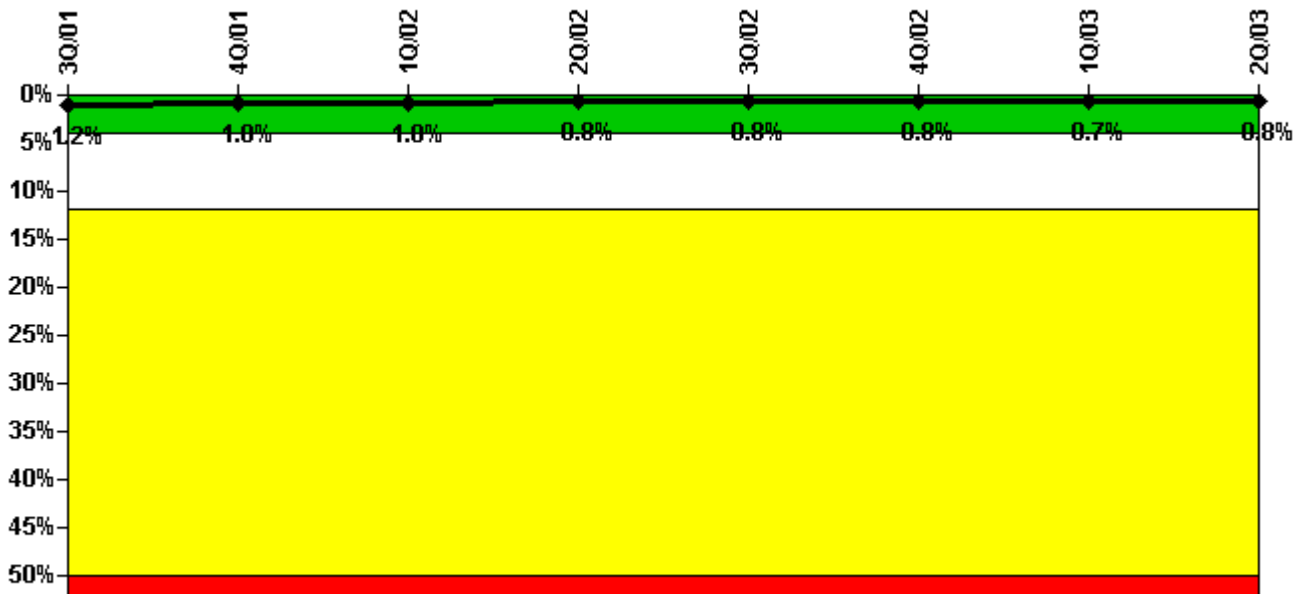
Thresholds: White > 4.0% Yellow > 12.0% Red > 50.0%

#### Notes

Safety System Unavailability, High Pressure Injection System (HPCI)	3Q/01	4Q/01	1Q/02	2Q/02	3Q/02	4Q/02	1Q/03	2Q/03
Train 1								
Planned unavailable hours	24.21	7.74	15.31	12.90	18.62	3.62	0.35	11.15
Unplanned unavailable hours	0	0	0	0	0.50	0	0	0
Fault exposure hours	0	0	0	0	0	0	0	0
Effective Reset hours	0	0	0	0	0	0	0	0
Required hours	2121.00	2148.00	2160.00	2183.00	2208.00	2209.00	2000.75	1590.54
Indicator value	1.5%	1.1%	0.9%	0.9%	0.9%	0.9%	0.7%	0.7%

Licensee Comments: none

### Safety System Unavailability, Heat Removal System (RCIC)



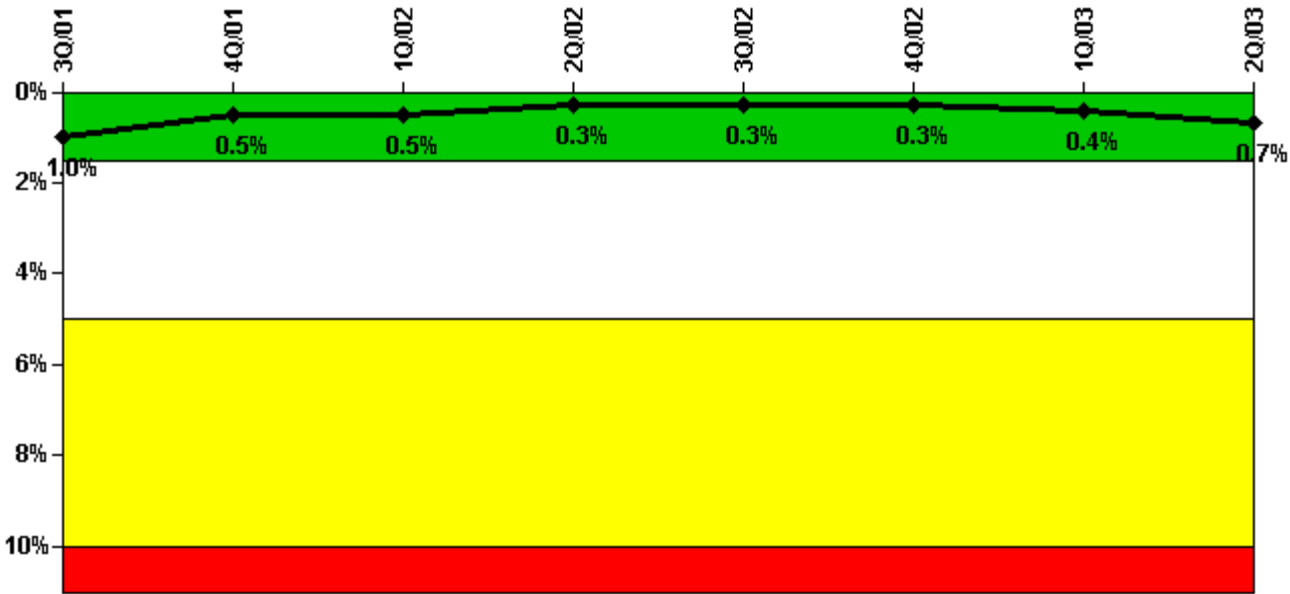
Thresholds: White > 4.0% Yellow > 12.0% Red > 50.0%

#### Notes

Safety System Unavailability, Heat Removal System (RCIC)	3Q/01	4Q/01	1Q/02	2Q/02	3Q/02	4Q/02	1Q/03	2Q/03
Train 1								
Planned unavailable hours	13.72	10.75	11.86	7.64	14.28	22.73	19.48	9.74
Unplanned unavailable hours	0.73	0	0	0	0	0	0	0
Fault exposure hours	0	0	0	0	0	0	0	0
Effective Reset hours	0	0	0	0	0	0	0	0
Required hours	2121.00	2148.00	2160.00	2183.00	2208.00	2209.00	2000.75	1590.54
Indicator value	1.2%	1.0%	1.0%	0.8%	0.8%	0.8%	0.7%	0.8%

Licensee Comments: none

### Safety System Unavailability, Residual Heat Removal System



Thresholds: White > 1.5% Yellow > 5.0% Red > 10.0%

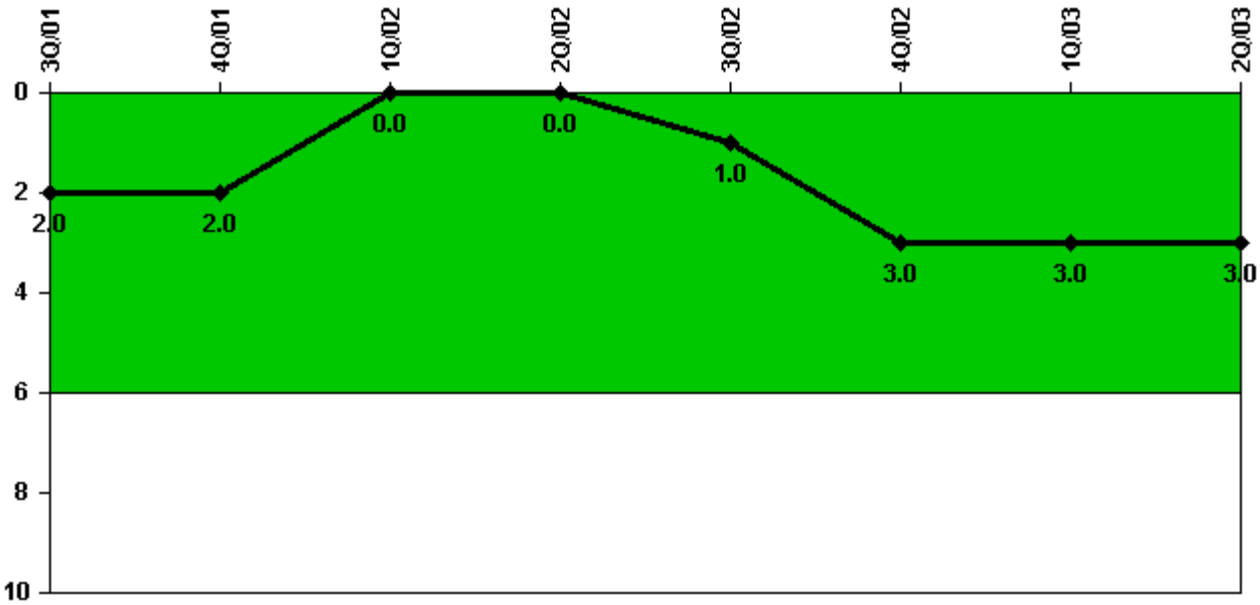
**Notes**

Safety System Unavailability, Residual Heat Removal System	3Q/01	4Q/01	1Q/02	2Q/02	3Q/02	4Q/02	1Q/03	2Q/03
<b>Train 1</b>								
Planned unavailable hours	0	0.25	0	2.48	0	3.00	0	109.45
Unplanned unavailable hours	0	0	0	0	0	0	59.20	0
Fault exposure hours	0	0	0	0	0	0	0	0
Effective Reset hours	0	0	0	0	0	0	0	0
Required hours	2208.00	2209.00	2160.00	2183.00	2208.00	2209.00	2160.00	2183.00
<b>Train 2</b>								
Planned unavailable hours	0	0	0	0	0.50	0	0	0
Unplanned unavailable hours	0	0	0	0	0	0	12.80	0
Fault exposure hours	0	0	0	0	0	0	0	0
Effective Reset hours	0	0	0	0	0	0	0	0
Required hours	2208.00	2209.00	2160.00	2183.00	2208.00	2209.00	2160.00	2183.00
Indicator value	1.0%	0.5%	0.5%	0.3%	0.3%	0.3%	0.4%	0.7%

Licensee Comments:

2Q/03: Reflects unavailability hours incurred at the beginning of the 2003 refueling outage.

### Safety System Functional Failures (BWR)



Thresholds: White > 6.0

#### Notes

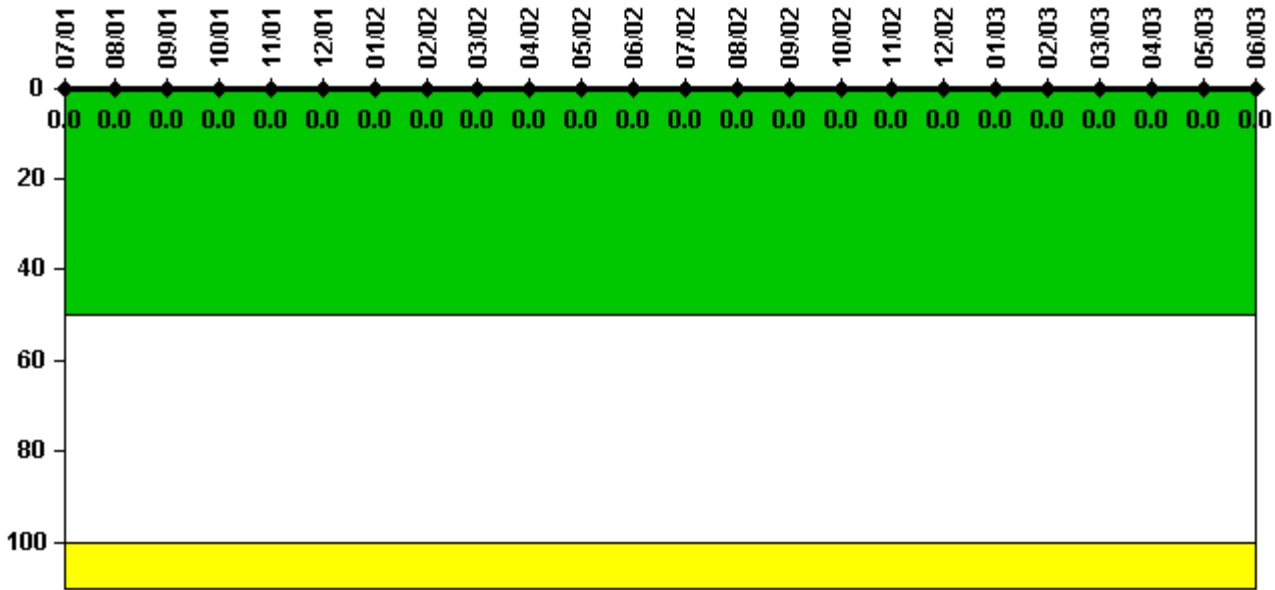
Safety System Functional Failures (BWR)	3Q/01	4Q/01	1Q/02	2Q/02	3Q/02	4Q/02	1Q/03	2Q/03
Safety System Functional Failures	0	0	0	0	1	2	0	0
Indicator value	2	2	0	0	1	3	3	3

Licensee Comments:

2Q/03: Reflects LER 2002-001-00 (HPCI) that was submitted on 9/4/2002, LER 2002-002-00 (CRHEAF) that was submitted on 11/12/2002, and LER 2002-003-00 (RPS) that was submitted on 12/2/2002.



### Reactor Coolant System Activity



Thresholds: White > 50.0 Yellow > 100.0

#### Notes

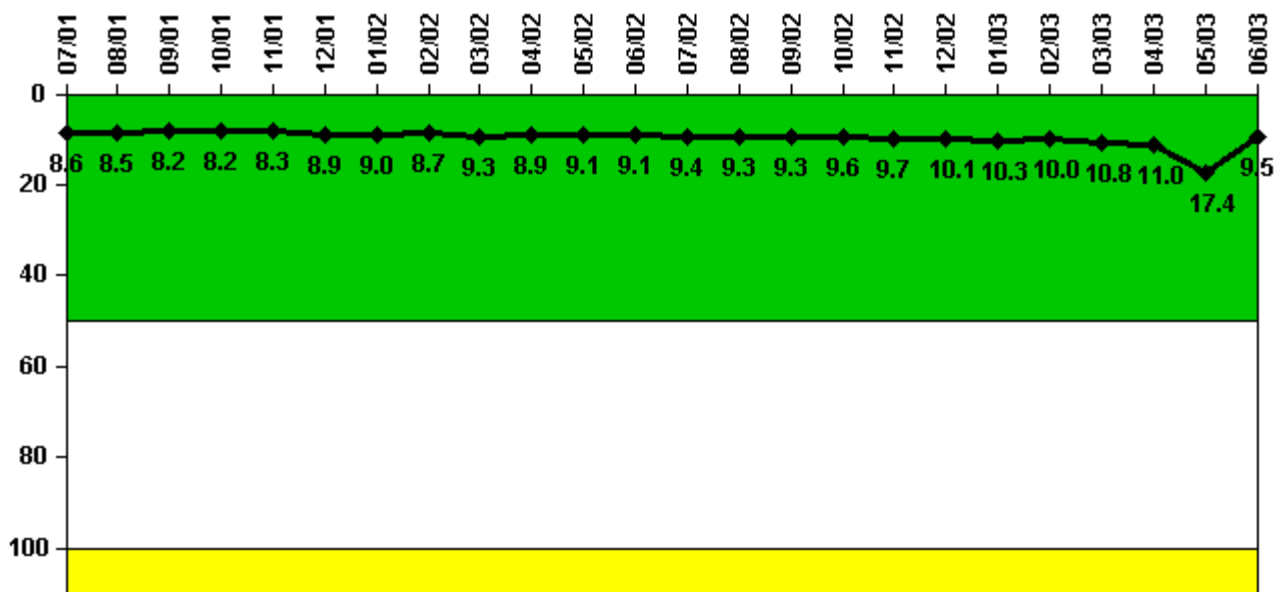
Reactor Coolant System Activity	7/01	8/01	9/01	10/01	11/01	12/01	1/02	2/02	3/02	4/02	5/02	6/02
Maximum activity	0.002850	0.003030	0.002270	0.003310	0.002450	0.002260	0.002860	0.003050	0.003100	0.002360	0.002250	0.002360
Technical specification limit	20.0	20.0	20.0	20.0	20.0	20.0	20.0	20.0	20.0	20.0	20.0	20.0
Indicator value	0	0	0	0	0	0	0	0	0	0	0	0

Reactor Coolant System Activity	7/02	8/02	9/02	10/02	11/02	12/02	1/03	2/03	3/03	4/03	5/03	6/03
Maximum activity	0.002360	0.002930	0.002850	0.001780	0.002160	0.002900	0.004520	0.003160	0.003040	0.002970	0.002360	0.005000
Technical specification limit	20.0	20.0	20.0	20.0	20.0	20.0	20.0	20.0	20.0	20.0	20.0	20.0
Indicator value	0	0	0	0	0	0	0	0	0	0	0	0

Licensee Comments: none

### Reactor Coolant System Leakage



Thresholds: White > 50.0 Yellow > 100.0

#### Notes

Reactor Coolant System Leakage	7/01	8/01	9/01	10/01	11/01	12/01	1/02	2/02	3/02	4/02	5/02	6/02
Maximum leakage	2.140	2.130	2.060	2.060	2.080	2.230	2.250	2.180	2.330	2.230	2.270	2.280
Technical specification limit	25.0	25.0	25.0	25.0	25.0	25.0	25.0	25.0	25.0	25.0	25.0	25.0
Indicator value	8.6	8.5	8.2	8.2	8.3	8.9	9.0	8.7	9.3	8.9	9.1	9.1

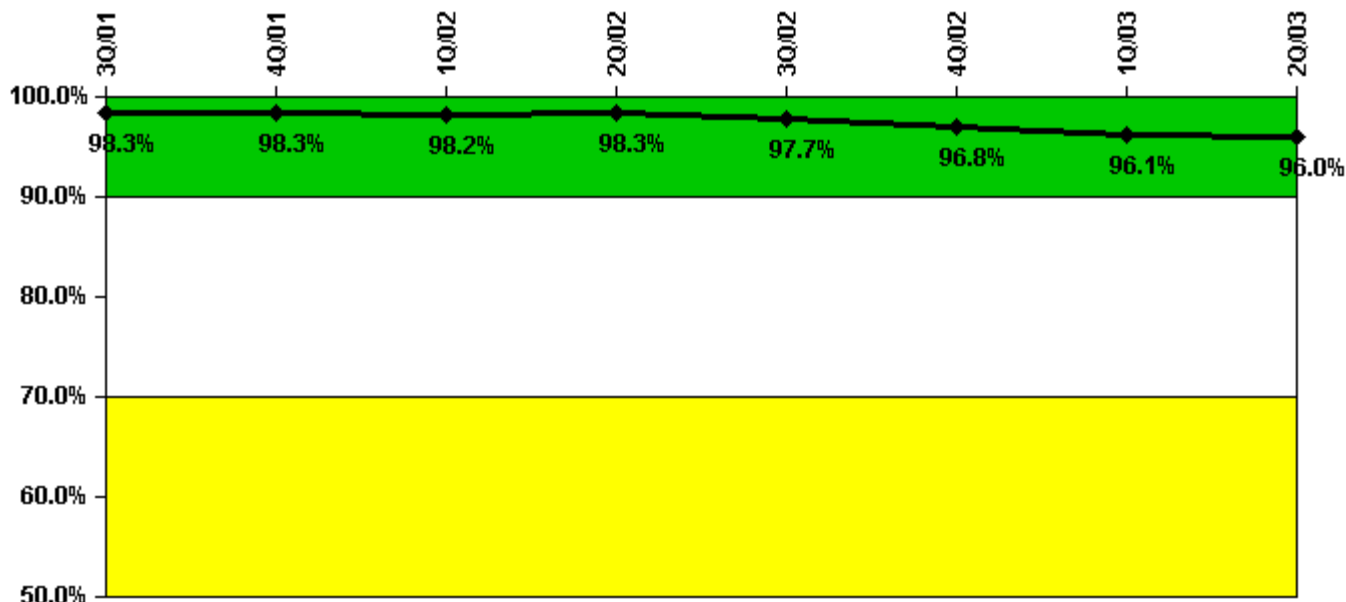
  

Reactor Coolant System Leakage	7/02	8/02	9/02	10/02	11/02	12/02	1/03	2/03	3/03	4/03	5/03	6/03
Maximum leakage	2.360	2.330	2.330	2.400	2.420	2.530	2.570	2.500	2.710	2.750	4.340	2.370
Technical specification limit	25.0	25.0	25.0	25.0	25.0	25.0	25.0	25.0	25.0	25.0	25.0	25.0
Indicator value	9.4	9.3	9.3	9.6	9.7	10.1	10.3	10.0	10.8	11.0	17.4	9.5

Licensee Comments:

6/03: Maximum total leakage (un-identified plus identified) in gpm for each month, depicted as a percentage of the Technical Specifications limit. Technical Specifications specify un-identified leakage and total leakage, does not specify identified leakage. The maximum leakage for May 2003 reflects leakage experienced during startup from the 2003 refueling outage.

### Drill/Exercise Performance



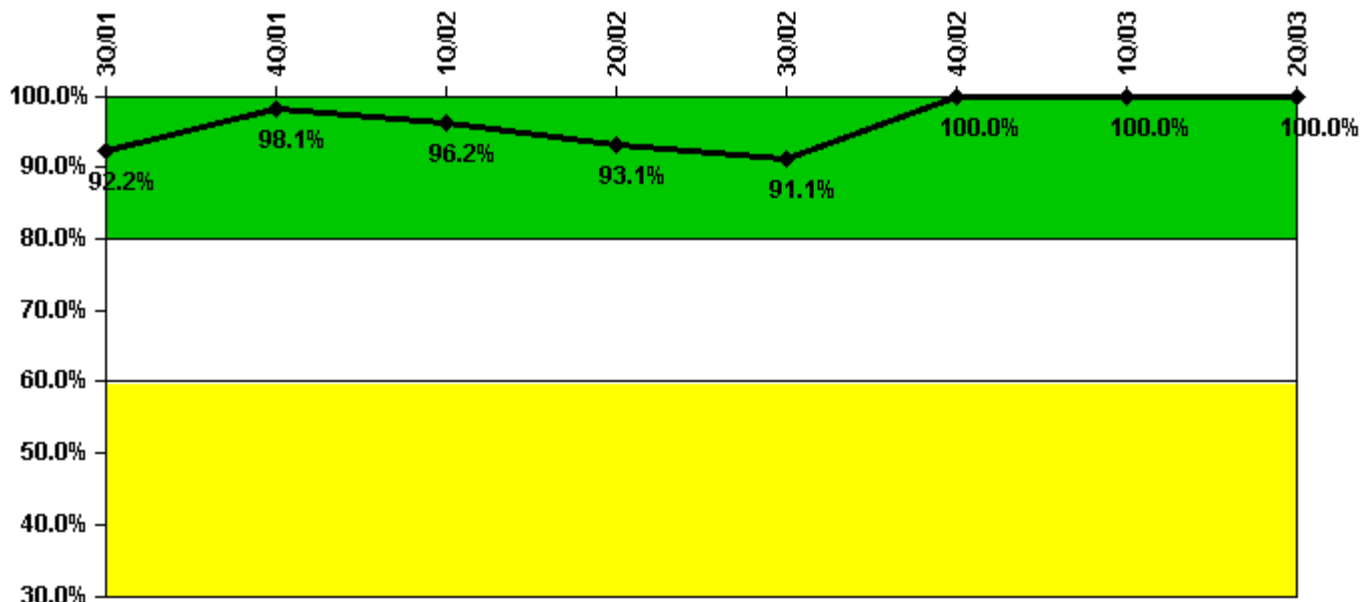
Thresholds: White < 90.0% Yellow < 70.0%

#### Notes

Drill/Exercise Performance	3Q/01	4Q/01	1Q/02	2Q/02	3Q/02	4Q/02	1Q/03	2Q/03
Successful opportunities	28.0	59.0	14.0	26.0	54.0	22.0	15.0	21.0
Total opportunities	28.0	61.0	15.0	26.0	56.0	24.0	17.0	22.0
Indicator value	98.3%	98.3%	98.2%	98.3%	97.7%	96.8%	96.1%	96.0%

Licensee Comments: none

### ERO Drill Participation



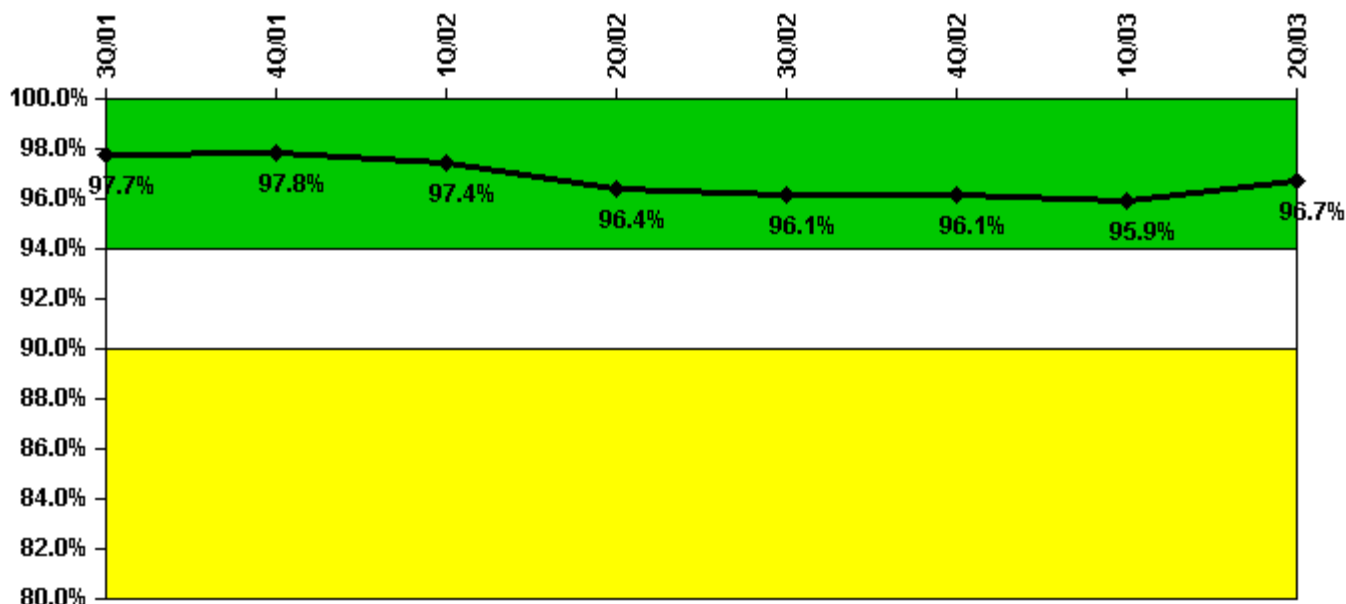
Thresholds: White < 80.0% Yellow < 60.0%

#### Notes

ERO Drill Participation	3Q/01	4Q/01	1Q/02	2Q/02	3Q/02	4Q/02	1Q/03	2Q/03
Participating Key personnel	47.0	52.0	50.0	54.0	51.0	58.0	57.0	56.0
Total Key personnel	51.0	53.0	52.0	58.0	56.0	58.0	57.0	56.0
Indicator value	92.2%	98.1%	96.2%	93.1%	91.1%	100.0%	100.0%	100.0%

Licensee Comments: none

### Alert & Notification System



Thresholds: White < 94.0% Yellow < 90.0%

#### Notes

Alert & Notification System	3Q/01	4Q/01	1Q/02	2Q/02	3Q/02	4Q/02	1Q/03	2Q/03
Successful siren-tests	328	438	324	313	432	330	321	325
Total sirens-tests	336	448	336	336	448	336	336	336
Indicator value	97.7%	97.8%	97.4%	96.4%	96.1%	96.1%	95.9%	96.7%

Licensee Comments: none

### Occupational Exposure Control Effectiveness



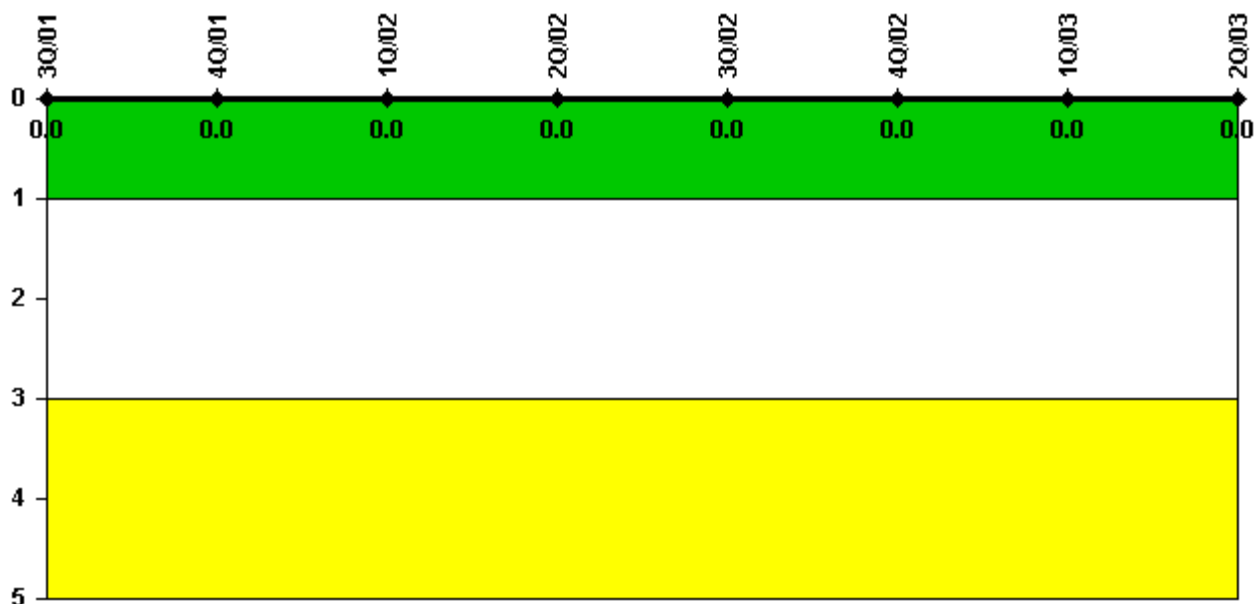
Thresholds: White > 2.0 Yellow > 5.0

#### Notes

Occupational Exposure Control Effectiveness	3Q/01	4Q/01	1Q/02	2Q/02	3Q/02	4Q/02	1Q/03	2Q/03
High radiation area occurrences	0	0	0	0	0	0	0	0
Very high radiation area occurrences	0	0	0	0	0	0	0	0
Unintended exposure occurrences	0	0	0	0	0	0	0	0
Indicator value	1	0	0	0	0	0	0	0

Licensee Comments: none

### RETS/ODCM Radiological Effluent



Thresholds: White > 1.0 Yellow > 3.0

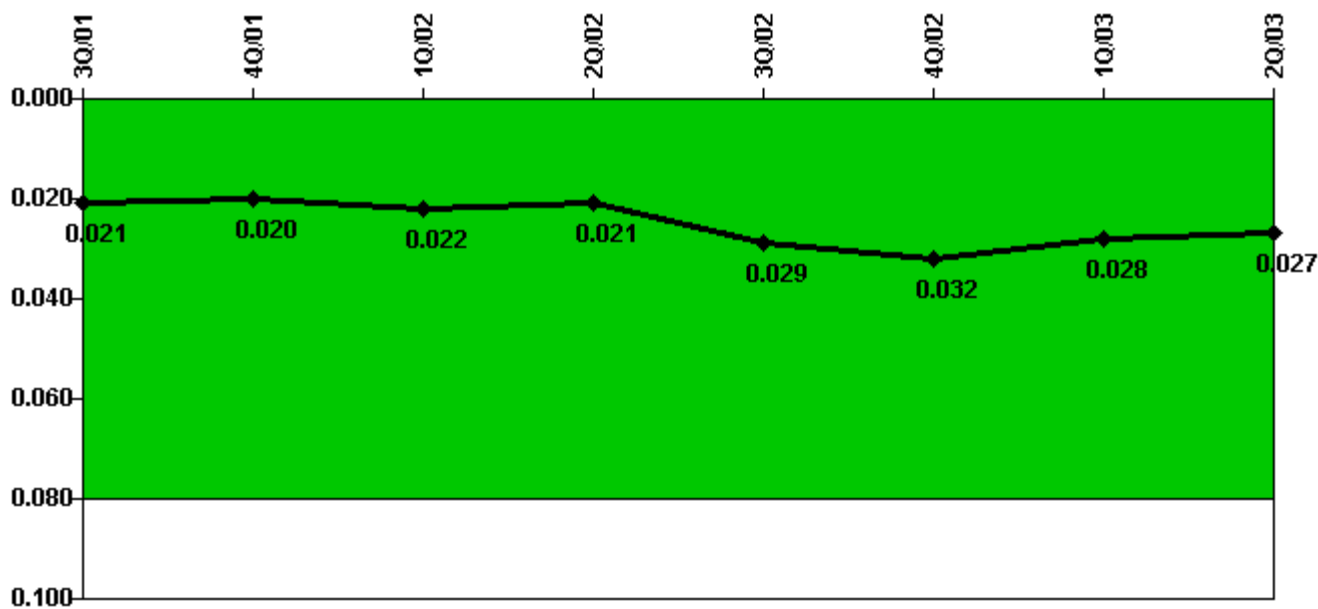
#### Notes

RETS/ODCM Radiological Effluent	3Q/01	4Q/01	1Q/02	2Q/02	3Q/02	4Q/02	1Q/03	2Q/03
RETS/ODCM occurrences	0	0	0	0	0	0	0	0
Indicator value	0	0	0	0	0	0	0	0

#### Licensee Comments:

2Q/03: Analysis results of effluents for June 2003 were not available when this report was prepared because the results of laboratory analysis of samples for June will not be available until July. Weekly calculations completed through June 30, 2003 indicate cumulative doses for 2Q-2003 were well below the specified values. The sample analysis results for 2Q-2003 will be reflected in the October 2003 data submittal (for 3Q-2003). The sample analysis results for 1Q-2003 were as reported in the April 2003 data submittal (for 1Q-2003).

### Protected Area Security Performance Index



Thresholds: White > 0.080

#### Notes

Protected Area Security Performance Index	3Q/01	4Q/01	1Q/02	2Q/02	3Q/02	4Q/02	1Q/03	2Q/03
IDS compensatory hours	73.20	36.60	173.60	137.20	82.40	42.20	75.80	44.10
CCTV compensatory hours	118.5	0	26.9	31.8	250.3	45.9	0.6	67.3
IDS normalization factor	2.15	2.15	2.15	2.15	2.15	2.15	2.15	2.15
CCTV normalization factor	1.0	1.0	1.0	1.0	1.0	1.0	1.0	1.0
Index Value	0.021	0.020	0.022	0.021	0.029	0.032	0.028	0.027

Licensee Comments: none



### Personnel Screening Program



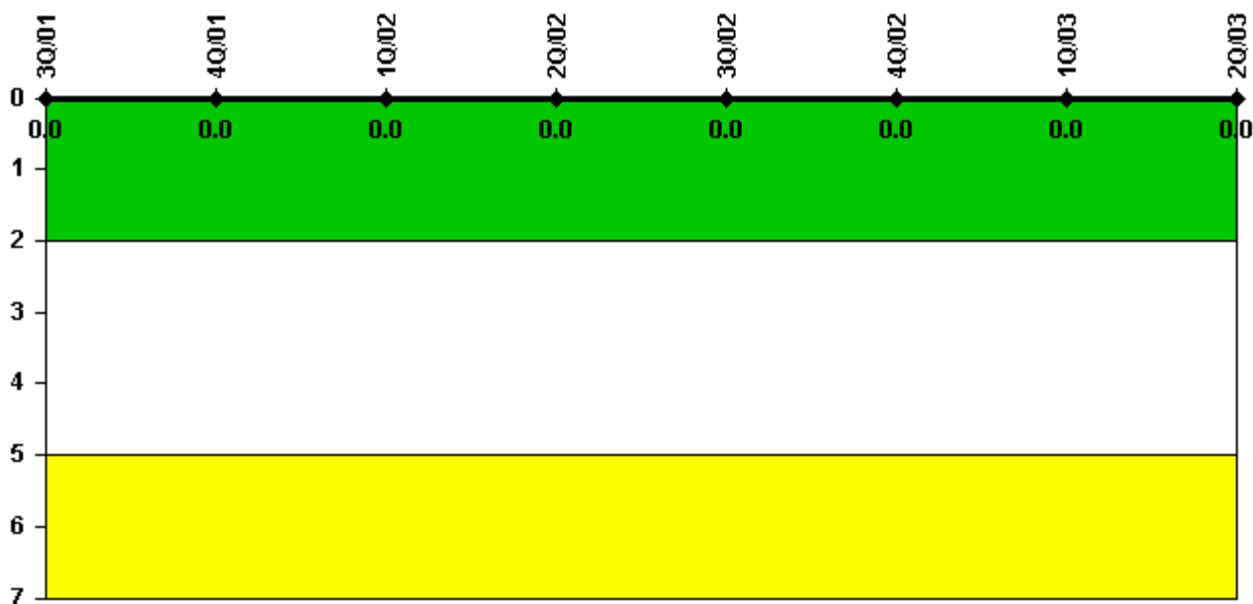
Thresholds: White > 2.0 Yellow > 5.0

#### Notes

Personnel Screening Program	3Q/01	4Q/01	1Q/02	2Q/02	3Q/02	4Q/02	1Q/03	2Q/03
Program failures	0	0	0	0	0	0	0	0
Indicator value	0	0	0	0	0	0	0	0

Licensee Comments: none

### FFD/Personnel Reliability



Thresholds: White > 2.0 Yellow > 5.0

#### Notes

FFD/Personnel Reliability	3Q/01	4Q/01	1Q/02	2Q/02	3Q/02	4Q/02	1Q/03	2Q/03
Program Failures	0	0	0	0	0	0	0	0
Indicator value	0	0	0	0	0	0	0	0

Licensee Comments: none

▲ [PI Summary](#) | [Inspection Findings Summary](#) | [Reactor Oversight Process](#)

Last Modified: July 22, 2003