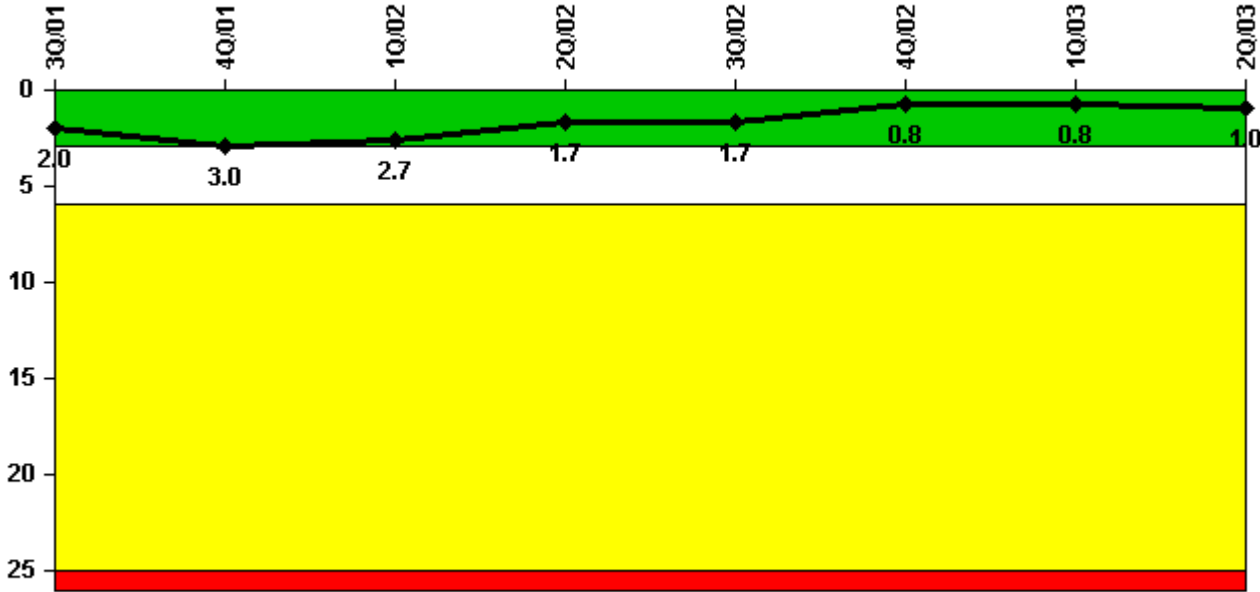


# Perry 1

## 2Q/2003 Performance Indicators

Licensee's General Comments: none

### Unplanned Scrams per 7000 Critical Hrs



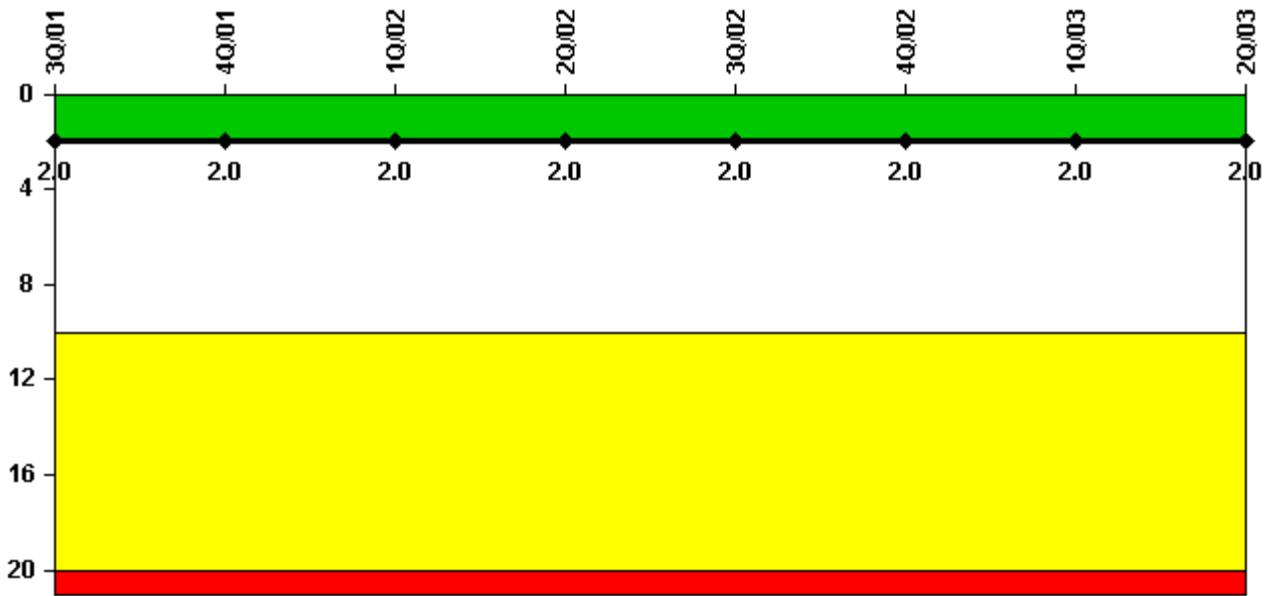
Thresholds: White > 3.0 Yellow > 6.0 Red > 25.0

### Notes

Unplanned Scrams per 7000 Critical Hrs	3Q/01	4Q/01	1Q/02	2Q/02	3Q/02	4Q/02	1Q/03	2Q/03
Unplanned scrams	1.0	1.0	0	0	1.0	0	0	0
Critical hours	1798.9	2156.2	2160.0	2026.0	1993.7	2138.6	2160.0	900.6
Indicator value	2.0	3.0	2.7	1.7	1.7	0.8	0.8	1.0

Licensee Comments: none

### Scrams with Loss of Normal Heat Removal



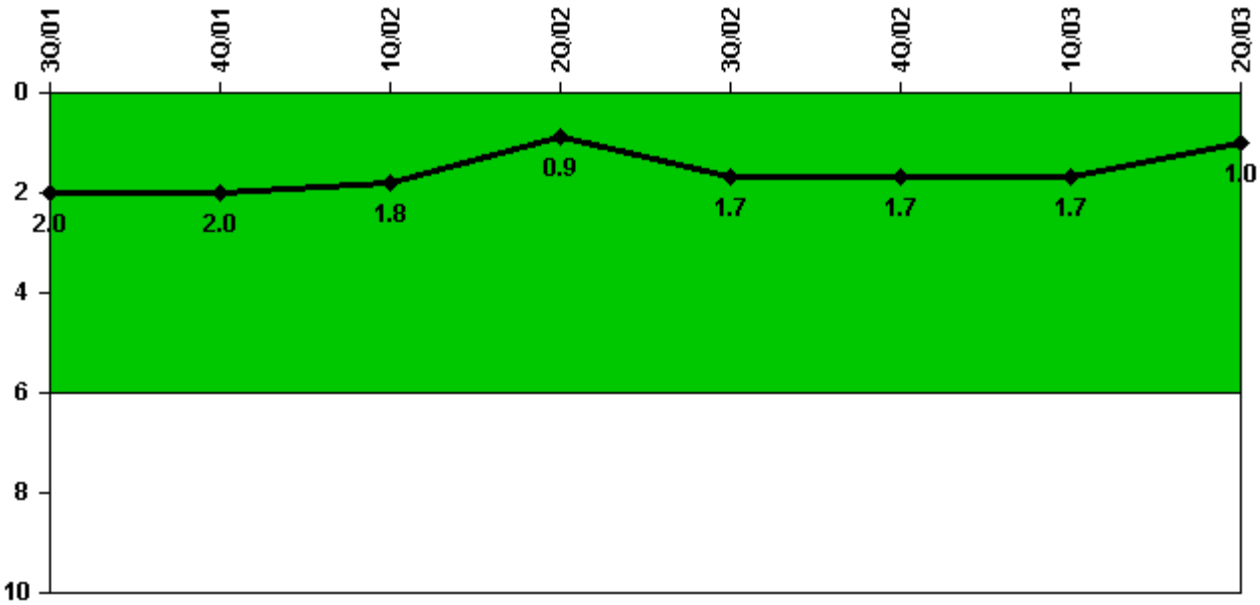
Thresholds: White > 2.0 Yellow > 10.0 Red > 20.0

#### Notes

Scrams with Loss of Normal Heat Removal	3Q/01	4Q/01	1Q/02	2Q/02	3Q/02	4Q/02	1Q/03	2Q/03
Scrams	1.0	0	0	0	0	0	0	0
Indicator value	2.0	2.0	2.0	2.0	2.0	2.0	2.0	2.0

Licensee Comments: none

### Unplanned Power Changes per 7000 Critical Hrs



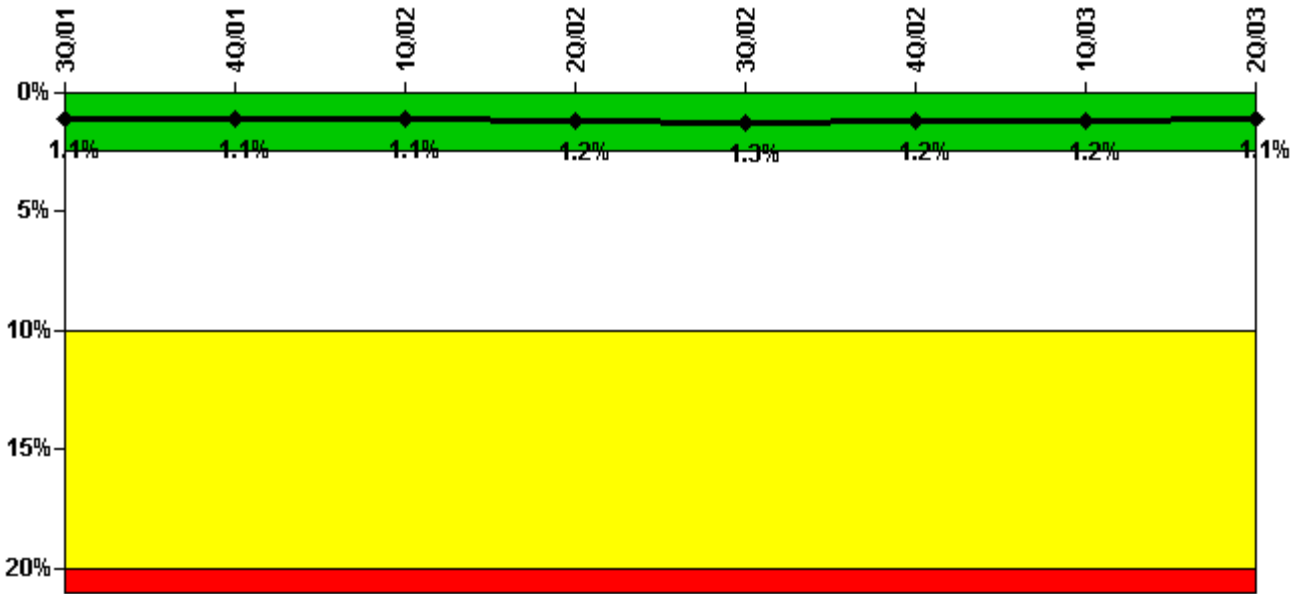
Thresholds: White > 6.0

#### Notes

Unplanned Power Changes per 7000 Critical Hrs	3Q/01	4Q/01	1Q/02	2Q/02	3Q/02	4Q/02	1Q/03	2Q/03
Unplanned power changes	0	0	0	1.0	1.0	0	0	0
Critical hours	1798.9	2156.2	2160.0	2026.0	1993.7	2138.6	2160.0	900.6
Indicator value	2.0	2.0	1.8	0.9	1.7	1.7	1.7	1.0

Licensee Comments: none

### Safety System Unavailability, Emergency AC Power, >2EDG



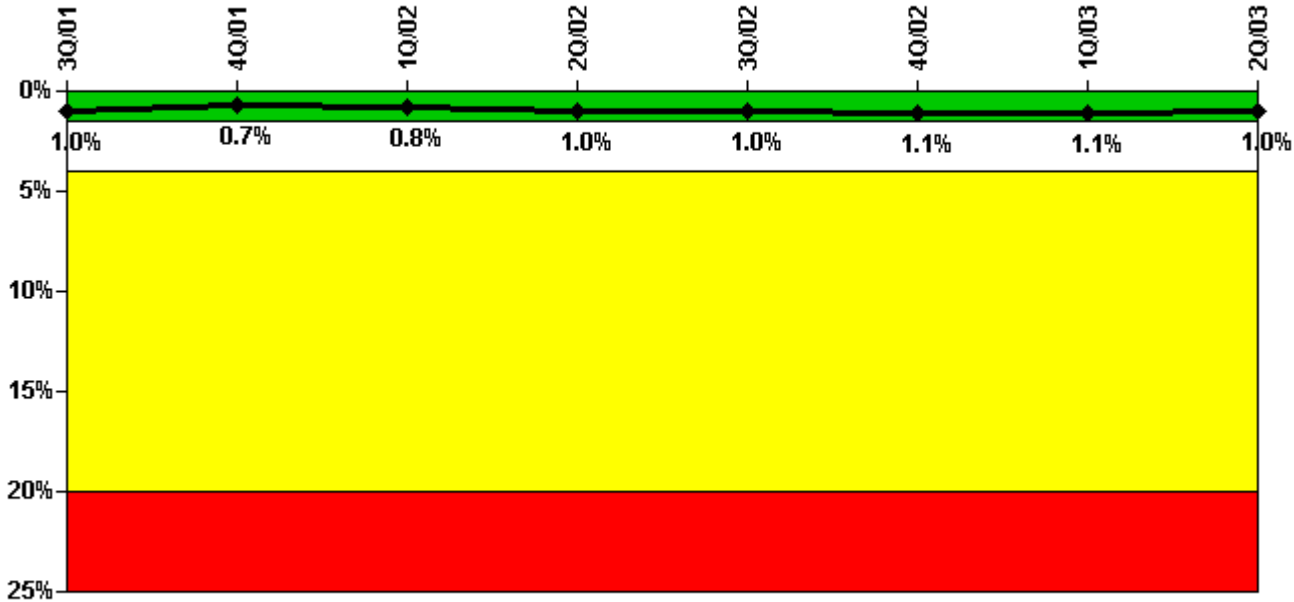
Thresholds: White > 2.5% Yellow > 10.0% Red > 20.0%

**Notes**

Safety System Unavailability, Emergency AC Power, >2EDG	3Q/01	4Q/01	1Q/02	2Q/02	3Q/02	4Q/02	1Q/03	2Q/03
<b>Train 1</b>								
Planned unavailable hours	53.05	15.95	25.00	58.03	5.80	5.05	23.02	2.47
Unplanned unavailable hours	0	0	0	0	0	0	0	0
Fault exposure hours	0	0	0	0	0	0	0	0
Effective Reset hours	0	0	0	0	0	0	0	0
Required hours	2208.00	2209.00	2160.00	2183.00	2208.00	2209.00	2160.00	2183.00
<b>Train 2</b>								
Planned unavailable hours	17.10	64.51	6.74	20.78	4.69	23.47	6.13	3.84
Unplanned unavailable hours	0	0	0	0	65.71	45.82	0.17	0
Fault exposure hours	0	0	0	0	0	0	0	0
Effective Reset hours	0	0	0	0	0	0	0	0
Required hours	2208.00	2209.00	2160.00	2183.00	2208.00	2209.00	2160.00	2183.00
<b>Train 3</b>								
Planned unavailable hours	12.15	2.15	1.44	1.26	1.55	12.30	30.38	3.65
Unplanned unavailable hours	4.58	0	0	0	0	0	0	0
Fault exposure hours	0	0	0	0	0	0	0	0
Effective Reset hours	0	0	0	0	0	0	0	0
Required hours	2208.00	2209.00	2160.00	2183.00	2208.00	2209.00	2160.00	2183.00
<b>Indicator value</b>	<b>1.1%</b>	<b>1.1%</b>	<b>1.1%</b>	<b>1.2%</b>	<b>1.3%</b>	<b>1.2%</b>	<b>1.2%</b>	<b>1.1%</b>

Licensee Comments: none

### Safety System Unavailability, High Pressure Injection System (HPCS)



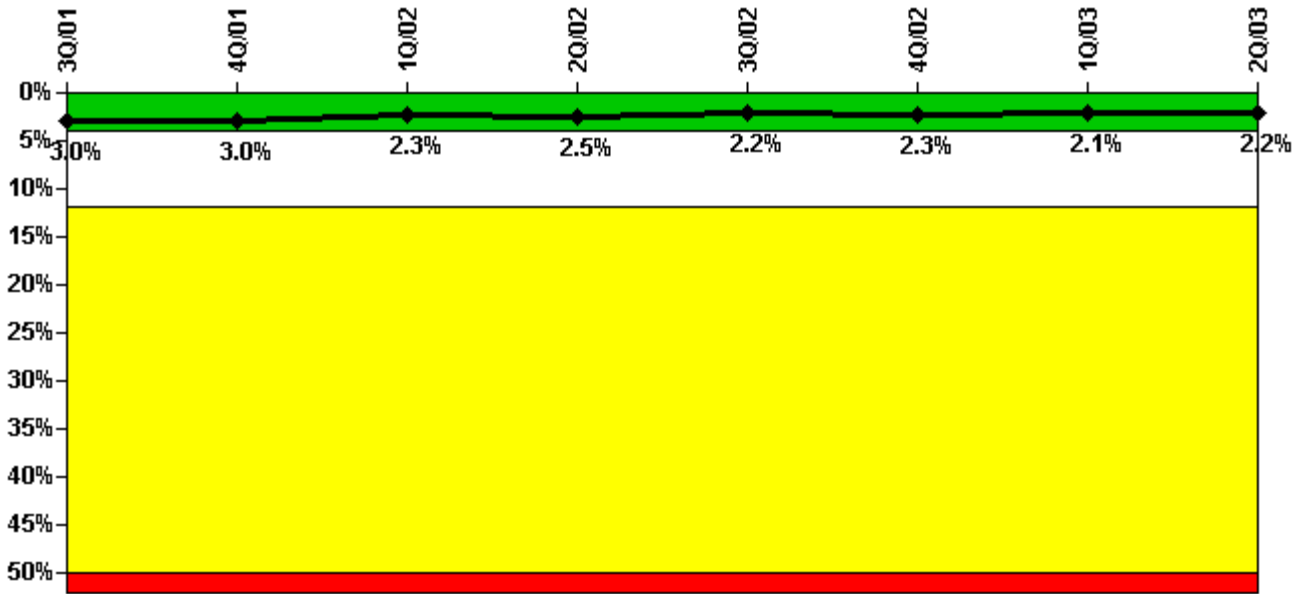
Thresholds: White > 1.5% Yellow > 4.0% Red > 20.0%

**Notes**

Safety System Unavailability, High Pressure Injection System (HPCS)	3Q/01	4Q/01	1Q/02	2Q/02	3Q/02	4Q/02	1Q/03	2Q/03
Train 1								
Planned unavailable hours	2.74	1.22	45.10	97.85	4.12	1.20	16.83	2.22
Unplanned unavailable hours	0	0	0	0	0	7.73	0	0
Fault exposure hours	0	0	0	0	0	0	0	0
Effective Reset hours	0	0	0	0	0	0	0	0
Required hours	1798.90	2156.20	2160.00	2026.00	1993.68	2138.60	2160.00	900.60
Indicator value	1.0%	0.7%	0.8%	1.0%	1.0%	1.1%	1.1%	1.0%

Licensee Comments: none

### Safety System Unavailability, Heat Removal System (RCIC)



Thresholds: White > 4.0% Yellow > 12.0% Red > 50.0%

**Notes**

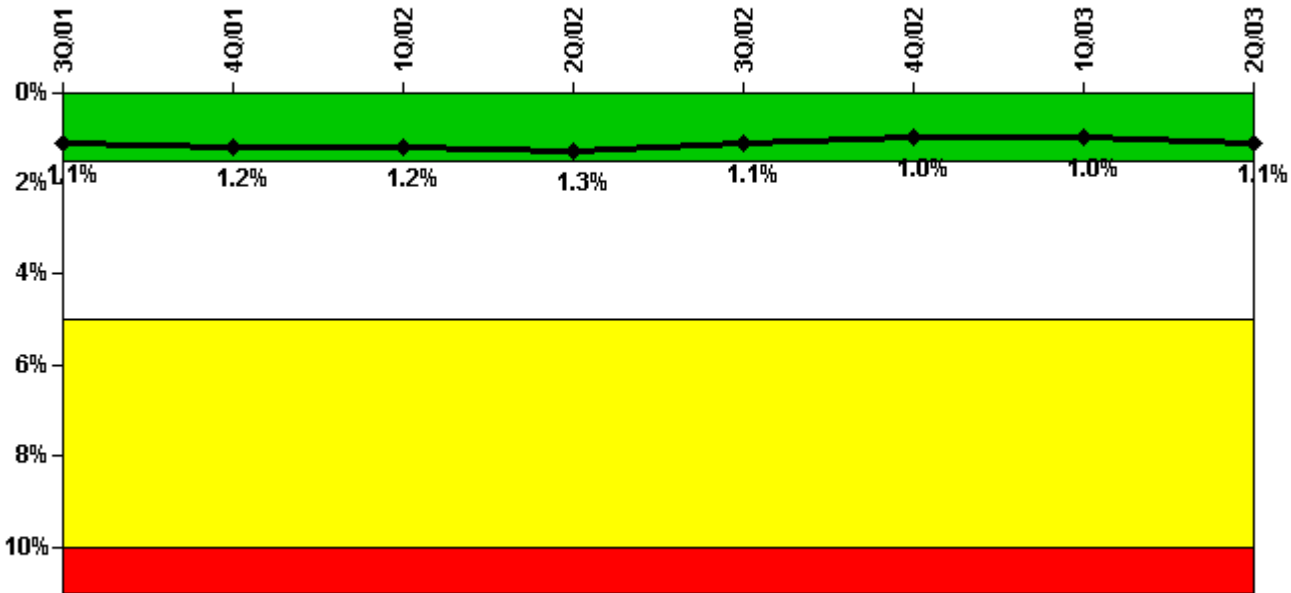
Safety System Unavailability, Heat Removal System (RCIC)	3Q/01	4Q/01	1Q/02	2Q/02	3Q/02	4Q/02	1Q/03	2Q/03
Train 1								
Planned unavailable hours	45.66	3.35	114.70	68.58	3.20	19.29	33.05	34.05
Unplanned unavailable hours	2.90	0	0	0	0	0	0	0
Fault exposure hours	0	0	0	0	0	0	0	0
Effective Reset hours	0	0	0	0	0	0	0	0
Required hours	1798.90	2156.20	2160.00	2026.00	1993.68	2138.60	2160.00	900.60
Indicator value	3.0%	3.0%	2.3%	2.5%	2.2%	2.3%	2.1%	2.2%

Licensee Comments:

2Q/03: Historical data for May 2002 was corrected to remove 24 hours of unavailability that had been reported in error. This change has no effect on the indicator color.

2Q/02: Historical data correction: As a result of additional review of unavailability associated with system testing, previously reported data for the period from July 2000 through December 2001 has been adjusted with an additional 12.4 hours of unavailability. Also, engineering analysis was in progress regarding the impact of a support system component on system unavailability at the end of the last quarter. That review determined the support system component did not result in any unplanned or fault exposure hours. As a result, the data reported for January 2002 has been adjusted to reflect this change. These changes do not affect the indicator color. Data Correction entered Q2/2003: Submitted data for May 2002 contained 24 more hours of unavailability than actually existed, so this change removes the extra hours. This change does not affect the indicator color.

### Safety System Unavailability, Residual Heat Removal System



Thresholds: White > 1.5% Yellow > 5.0% Red > 10.0%

Notes

Safety System Unavailability, Residual Heat Removal System	3Q/01	4Q/01	1Q/02	2Q/02	3Q/02	4Q/02	1Q/03	2Q/03
<b>Train 1</b>								
Planned unavailable hours	82.80	9.63	1.38	77.22	3.24	0	37.72	30.08
Unplanned unavailable hours	0	0	0	0	17.63	0	0	0
Fault exposure hours	0	0	0	0	0	0	0	0
Effective Reset hours	0	0	0	0	0	0	0	0
Required hours	2208.00	2209.00	2160.00	2183.00	2208.00	2209.00	2160.00	2183.00
<b>Train 2</b>								
Planned unavailable hours	0.55	41.42	0	0	0.55	75.35	3.59	0.43
Unplanned unavailable hours	0	0	0	0	0	0	0.17	0
Fault exposure hours	0	0	0	0	0	0	0	0
Effective Reset hours	0	0	0	0	0	0	0	0
Required hours	2208.00	2209.00	2160.00	2183.00	2208.00	2209.00	2160.00	2183.00
Indicator value	1.1%	1.2%	1.2%	1.3%	1.1%	1.0%	1.0%	1.1%

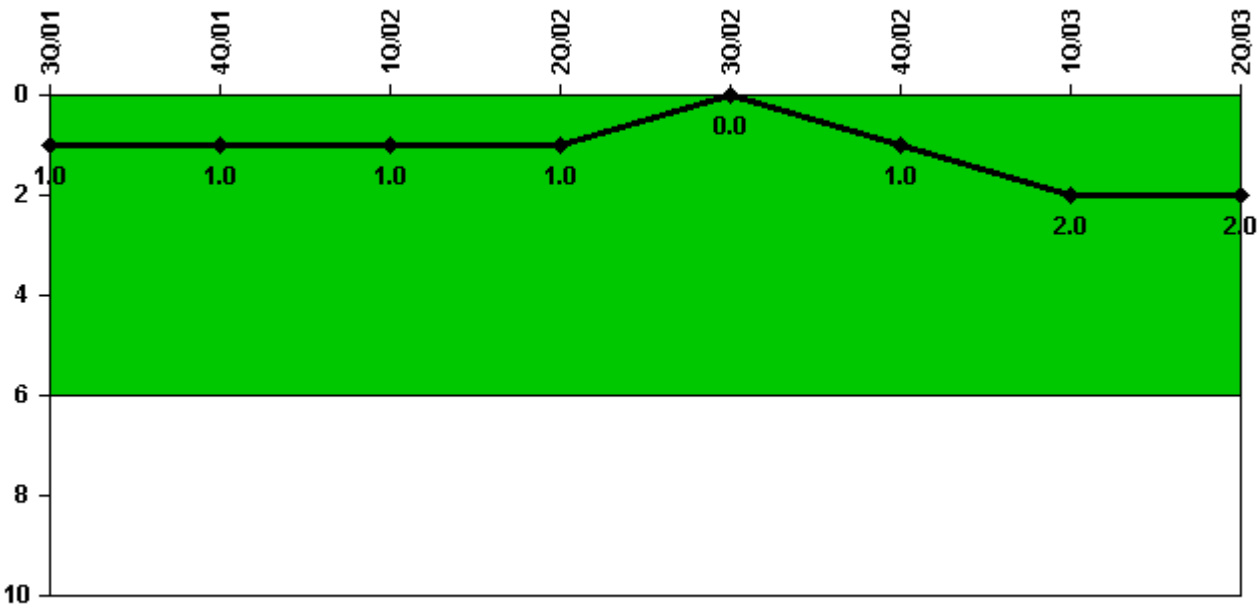
Licensee Comments:

2Q/03: Historical data for May 2002 was corrected to remove 24 hours of unavailability that had been reported in error. This change has no effect on the indicator color.

2Q/02: Historical data correction: As a result of additional review of unavailability associated with system testing,

previously reported data for the period from July 2000 through December 2001 has been adjusted with an additional 0.03 hours of unavailability. Also, engineering analysis was in progress regarding the impact of a support system component on system unavailability at the end of the last quarter. That review determined the support system component did not result in any unplanned or fault exposure hours. As a result, the data reported for January 2002 has been adjusted to reflect this change. These changes do not affect the indicator color. Data Correction entered Q2/2003: Submitted data for May 2002 contained 24 more hours of unavailability than actually existed, so this change removes the extra hours. This change does not affect the indicator color.

### Safety System Functional Failures (BWR)



Thresholds: White > 6.0

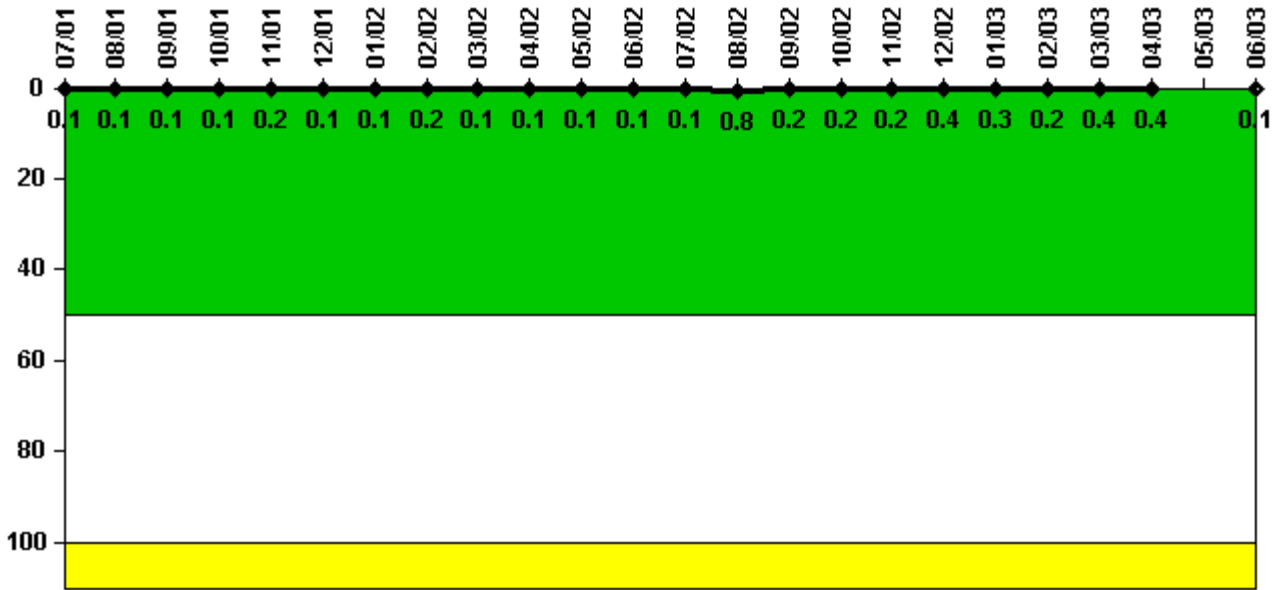
#### Notes

Safety System Functional Failures (BWR)	3Q/01	4Q/01	1Q/02	2Q/02	3Q/02	4Q/02	1Q/03	2Q/03
Safety System Functional Failures	1	0	0	0	0	1	1	0
Indicator value	1	1	1	1	0	1	2	2

Licensee Comments: none



### Reactor Coolant System Activity



Thresholds: White > 50.0 Yellow > 100.0

#### Notes

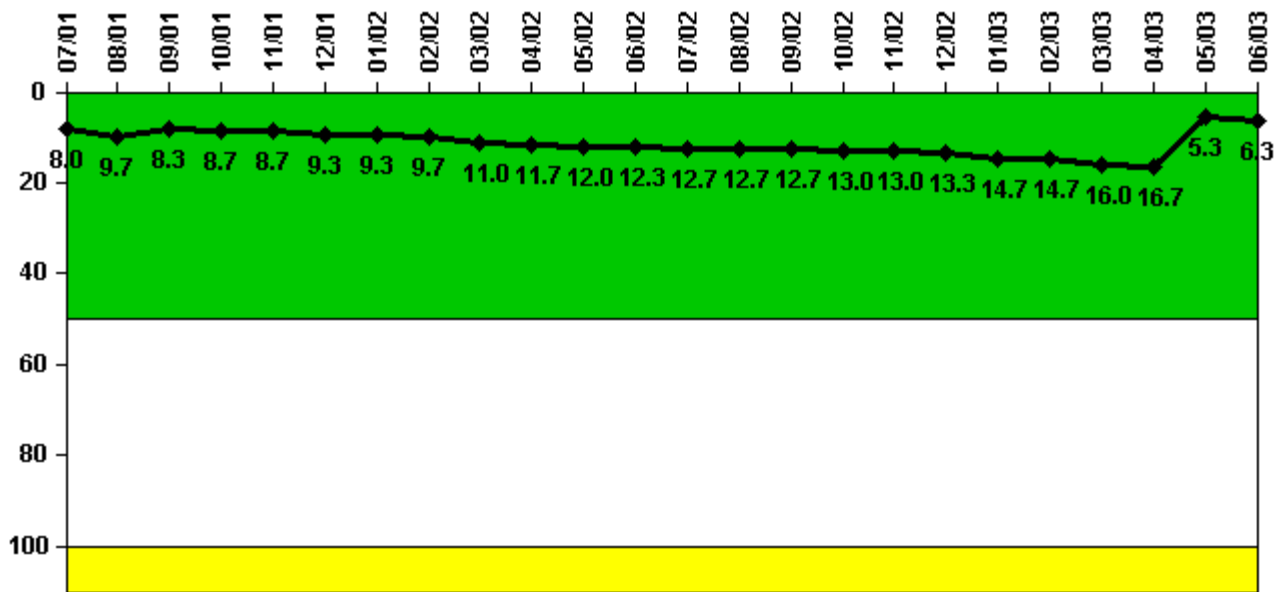
Reactor Coolant System Activity	7/01	8/01	9/01	10/01	11/01	12/01	1/02	2/02	3/02	4/02	5/02	6/02
Maximum activity	0.000258	0.000157	0.000197	0.000173	0.000311	0.000217	0.000285	0.000315	0.000214	0.000218	0.000241	0.000155
Technical specification limit	0.2	0.2	0.2	0.2	0.2	0.2	0.2	0.2	0.2	0.2	0.2	0.2
Indicator value	0.1	0.1	0.1	0.1	0.2	0.1	0.1	0.2	0.1	0.1	0.1	0.1

Reactor Coolant System Activity	7/02	8/02	9/02	10/02	11/02	12/02	1/03	2/03	3/03	4/03	5/03	6/03
Maximum activity	0.000158	0.001530	0.000397	0.000460	0.000438	0.000823	0.000525	0.000497	0.000766	0.000734	N/A	0.000109
Technical specification limit	0.2	0.2	0.2	0.2	0.2	0.2	0.2	0.2	0.2	0.2	0.2	0.2
Indicator value	0.1	0.8	0.2	0.2	0.2	0.4	0.3	0.2	0.4	0.4	N/A	0.1

Licensee Comments: none

### Reactor Coolant System Leakage



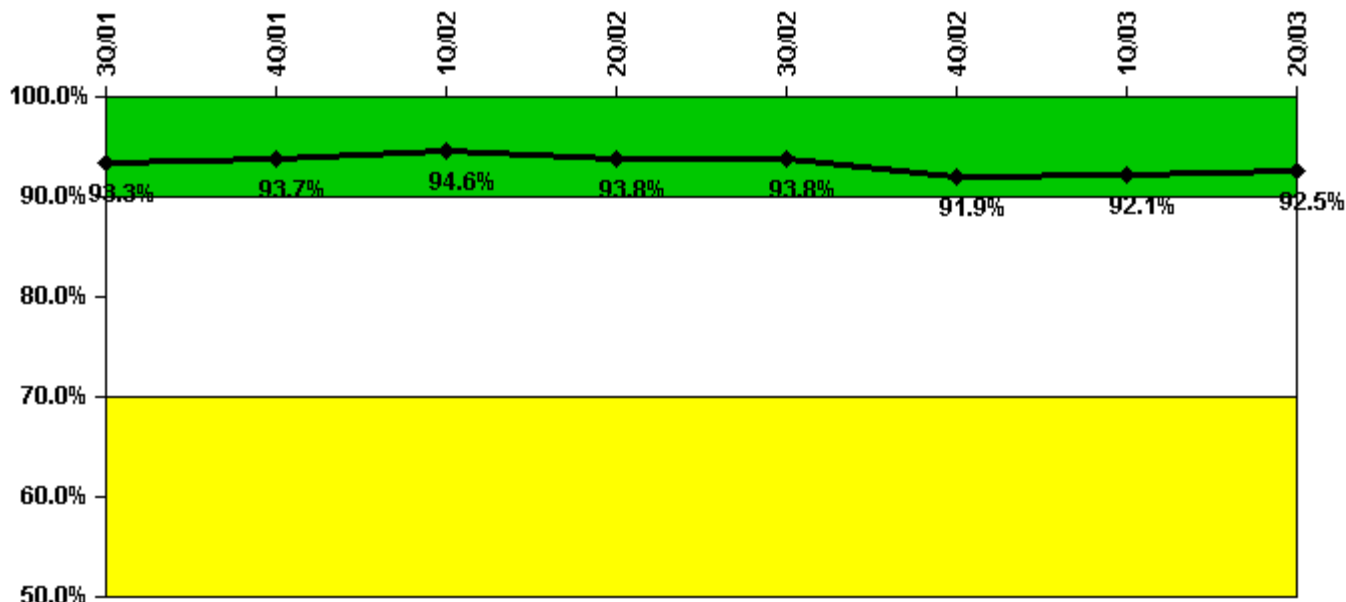
Thresholds: White > 50.0 Yellow > 100.0

Notes

Reactor Coolant System Leakage	7/01	8/01	9/01	10/01	11/01	12/01	1/02	2/02	3/02	4/02	5/02	6/02
Maximum leakage	2.400	2.900	2.500	2.600	2.600	2.800	2.800	2.900	3.300	3.500	3.600	3.700
Technical specification limit	30.0	30.0	30.0	30.0	30.0	30.0	30.0	30.0	30.0	30.0	30.0	30.0
Indicator value	8.0	9.7	8.3	8.7	8.7	9.3	9.3	9.7	11.0	11.7	12.0	12.3
Reactor Coolant System Leakage	7/02	8/02	9/02	10/02	11/02	12/02	1/03	2/03	3/03	4/03	5/03	6/03
Maximum leakage	3.800	3.800	3.800	3.900	3.900	4.000	4.400	4.400	4.800	5.000	1.600	1.900
Technical specification limit	30.0	30.0	30.0	30.0	30.0	30.0	30.0	30.0	30.0	30.0	30.0	30.0
Indicator value	12.7	12.7	12.7	13.0	13.0	13.3	14.7	14.7	16.0	16.7	5.3	6.3

Licensee Comments: none

### Drill/Exercise Performance



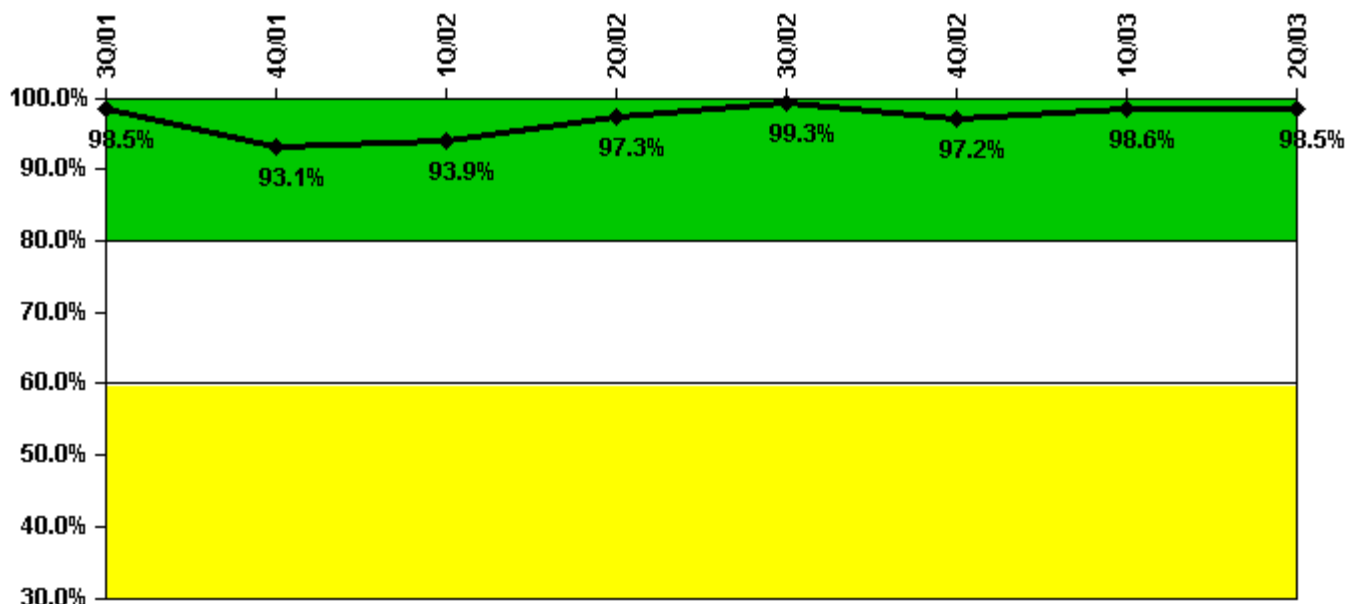
Thresholds: White < 90.0% Yellow < 70.0%

#### Notes

Drill/Exercise Performance	3Q/01	4Q/01	1Q/02	2Q/02	3Q/02	4Q/02	1Q/03	2Q/03
Successful opportunities	24.0	26.0	20.0	39.0	16.0	21.0	17.0	10.0
Total opportunities	28.0	26.0	20.0	42.0	18.0	24.0	18.0	11.0
Indicator value	93.3%	93.7%	94.6%	93.8%	93.8%	91.9%	92.1%	92.5%

Licensee Comments: none

### ERO Drill Participation



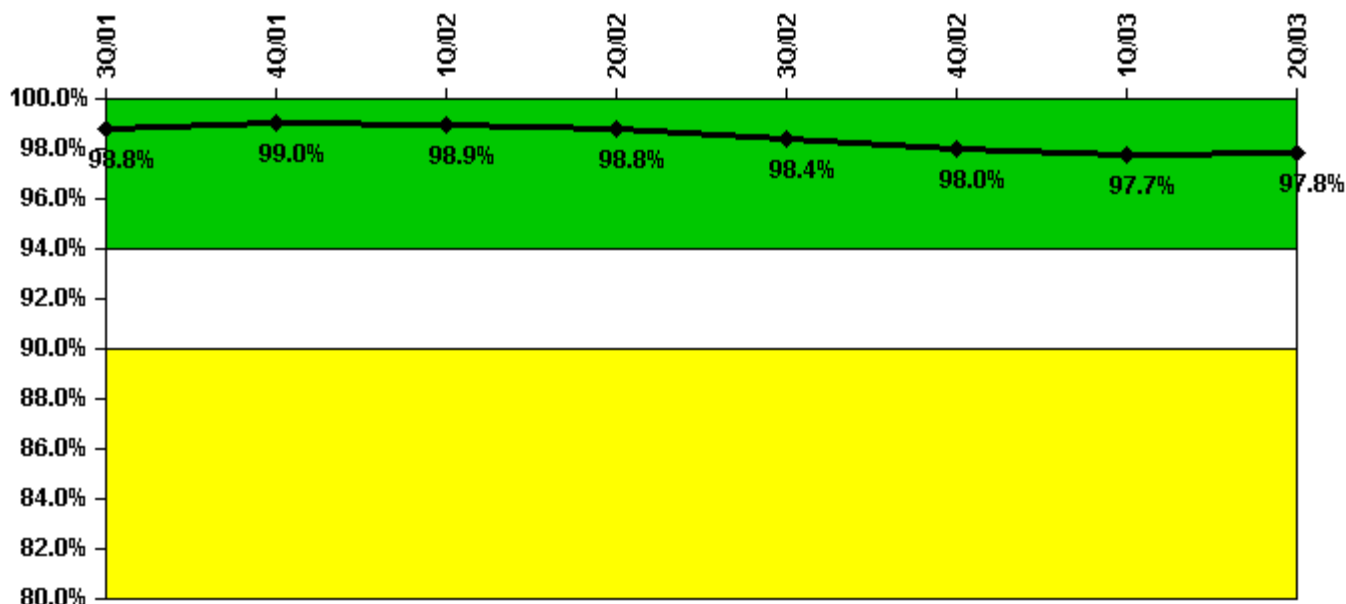
Thresholds: White < 80.0% Yellow < 60.0%

#### Notes

ERO Drill Participation	3Q/01	4Q/01	1Q/02	2Q/02	3Q/02	4Q/02	1Q/03	2Q/03
Participating Key personnel	134.0	135.0	139.0	144.0	144.0	137.0	144.0	135.0
Total Key personnel	136.0	145.0	148.0	148.0	145.0	141.0	146.0	137.0
Indicator value	98.5%	93.1%	93.9%	97.3%	99.3%	97.2%	98.6%	98.5%

Licensee Comments: none

### Alert & Notification System



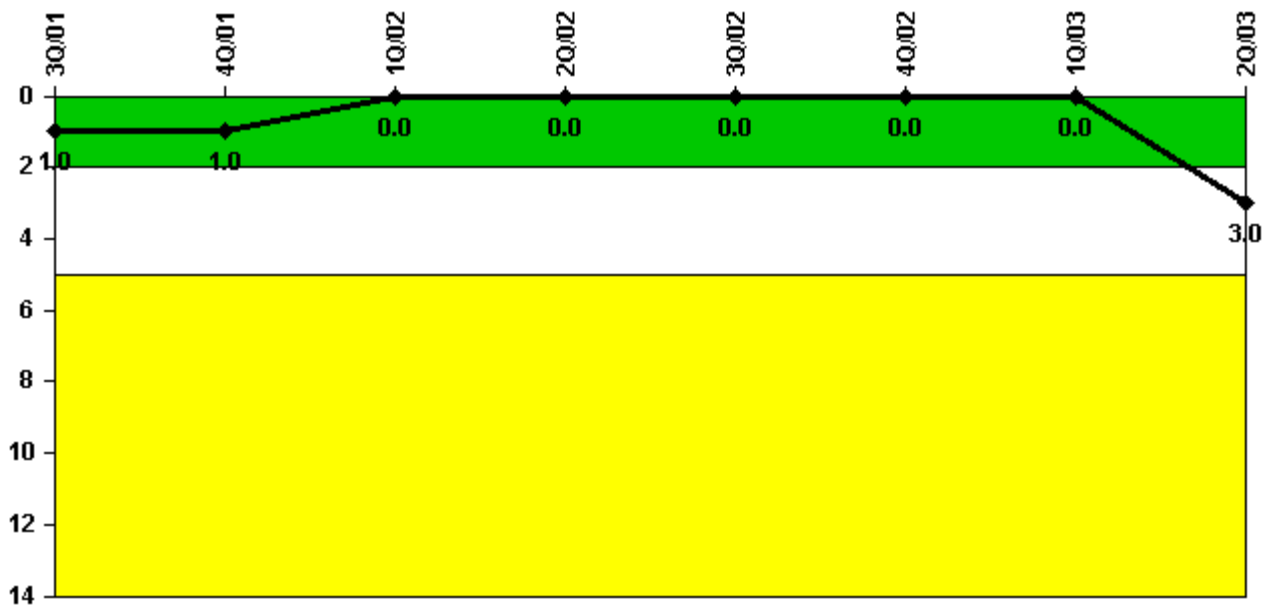
Thresholds: White < 94.0% Yellow < 90.0%

#### Notes

Alert & Notification System	3Q/01	4Q/01	1Q/02	2Q/02	3Q/02	4Q/02	1Q/03	2Q/03
Successful siren-tests	530	527	526	519	596	445	594	520
Total sirens-tests	532	532	532	532	608	456	608	532
Indicator value	98.8%	99.0%	98.9%	98.8%	98.4%	98.0%	97.7%	97.8%

Licensee Comments: none

### Occupational Exposure Control Effectiveness



Thresholds: White > 2.0 Yellow > 5.0

**Notes**

Occupational Exposure Control Effectiveness	3Q/01	4Q/01	1Q/02	2Q/02	3Q/02	4Q/02	1Q/03	2Q/03
High radiation area occurrences	0	0	0	0	0	0	0	1
Very high radiation area occurrences	0	0	0	0	0	0	0	0
Unintended exposure occurrences	0	0	0	0	0	0	0	2
Indicator value	1	1	0	0	0	0	0	3

Licensee Comments:

2Q/03: PI green-white threshold exceeded due to occurrences in April 2003 during the 9th refueling outage. One issue involved discovery of an un-posted technical specification high radiation area, two issues involved individuals receiving unintended exposure in excess of 100 millirem.

### RETS/ODCM Radiological Effluent



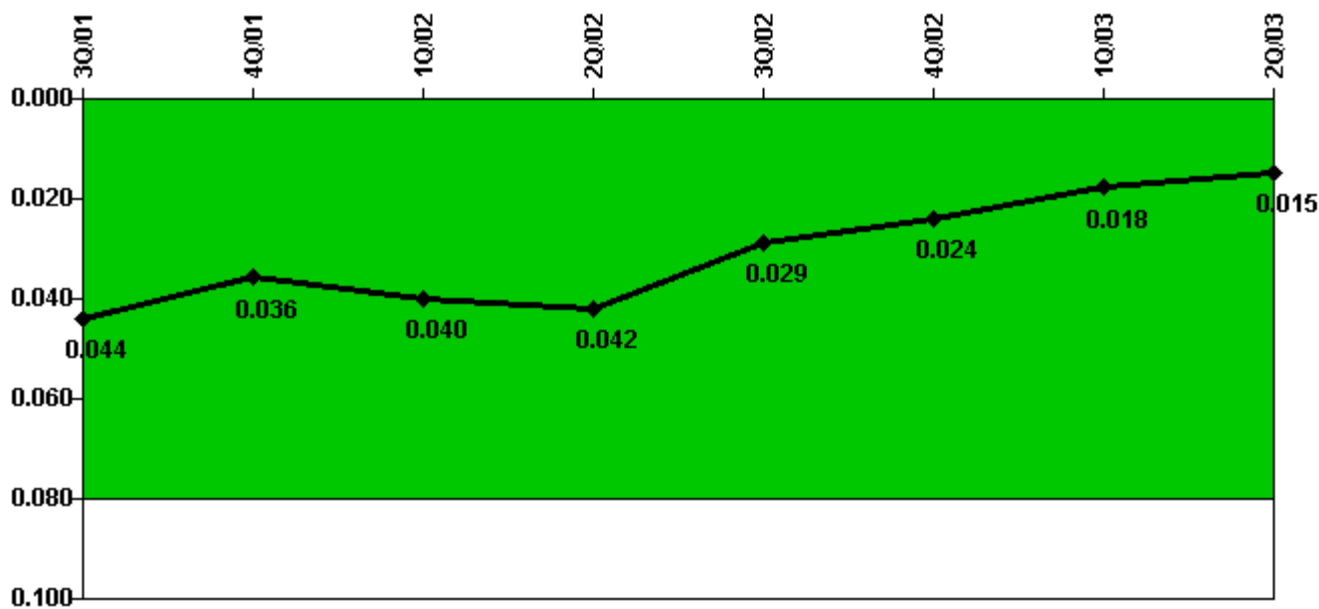
Thresholds: White > 1.0 Yellow > 3.0

#### Notes

RETS/ODCM Radiological Effluent	3Q/01	4Q/01	1Q/02	2Q/02	3Q/02	4Q/02	1Q/03	2Q/03
RETS/ODCM occurrences	0	0	0	0	0	0	0	0
Indicator value	0	0	0	0	0	0	0	0

Licensee Comments: none

### Protected Area Security Performance Index



Thresholds: White > 0.080

#### Notes

Protected Area Security Performance Index	3Q/01	4Q/01	1Q/02	2Q/02	3Q/02	4Q/02	1Q/03	2Q/03
IDS compensatory hours	289.60	105.70	149.40	219.40	18.50	12.40	49.50	165.70
CCTV compensatory hours	14.3	0	17.3	12.7	26.9	4.4	5.2	1.0
IDS normalization factor	1.10	1.10	1.10	1.10	1.10	1.10	1.10	1.10
CCTV normalization factor	1.0	1.0	1.0	1.0	1.0	1.0	1.0	1.0
Index Value	0.044	0.036	0.040	0.042	0.029	0.024	0.018	0.015

Licensee Comments: none



### Personnel Screening Program



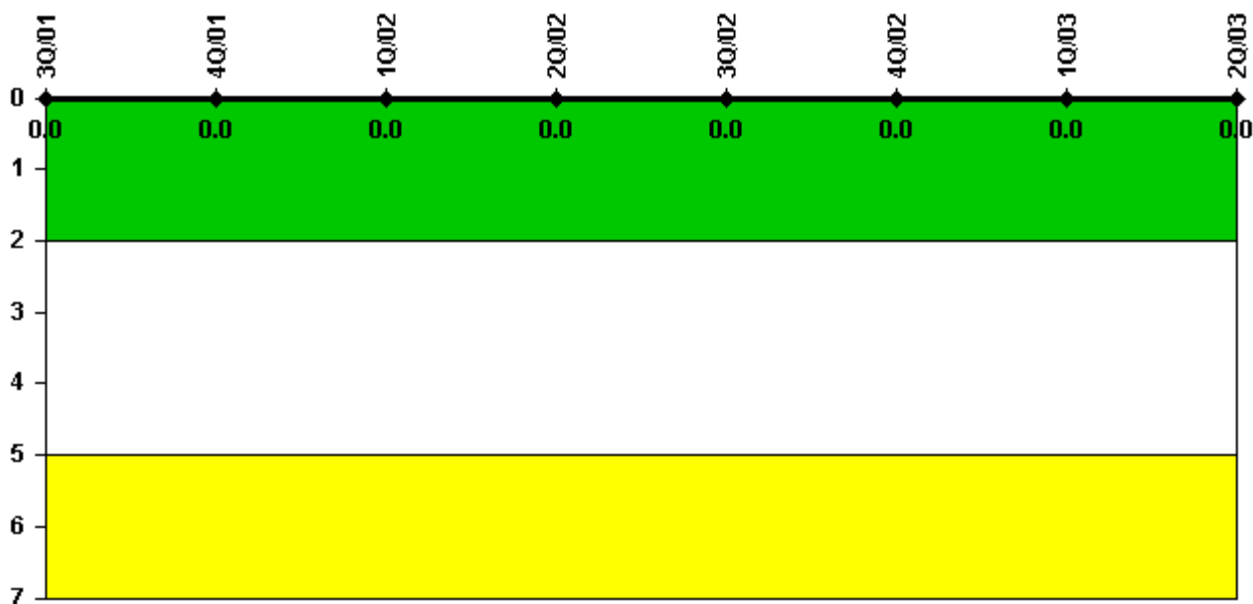
Thresholds: White > 2.0 Yellow > 5.0

#### Notes

Personnel Screening Program	3Q/01	4Q/01	1Q/02	2Q/02	3Q/02	4Q/02	1Q/03	2Q/03
Program failures	0	0	0	0	0	0	0	0
Indicator value	0	0	0	0	0	0	0	0

Licensee Comments: none

### FFD/Personnel Reliability



Thresholds: White > 2.0 Yellow > 5.0

#### Notes

FFD/Personnel Reliability	3Q/01	4Q/01	1Q/02	2Q/02	3Q/02	4Q/02	1Q/03	2Q/03
Program Failures	0	0	0	0	0	0	0	0
Indicator value	0	0	0	0	0	0	0	0

Licensee Comments: none

▲ [PI Summary](#) | [Inspection Findings Summary](#) | [Reactor Oversight Process](#)

Last Modified: July 22, 2003