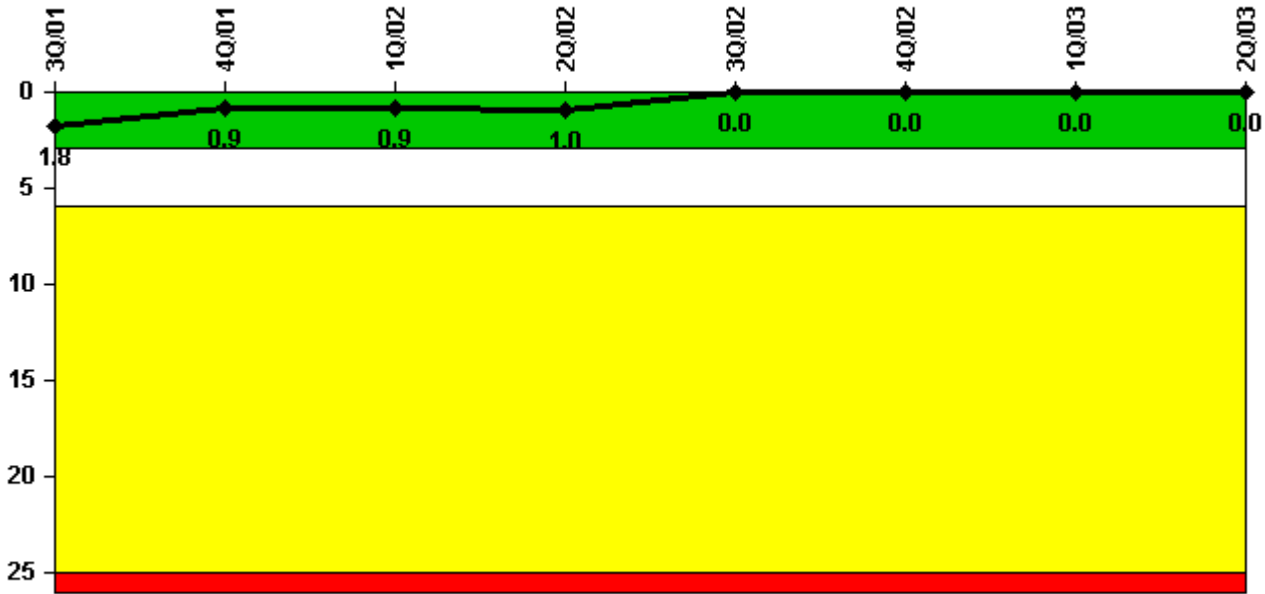


Palo Verde 2

2Q/2003 Performance Indicators

Licensee's General Comments: none

Unplanned Scrams per 7000 Critical Hrs



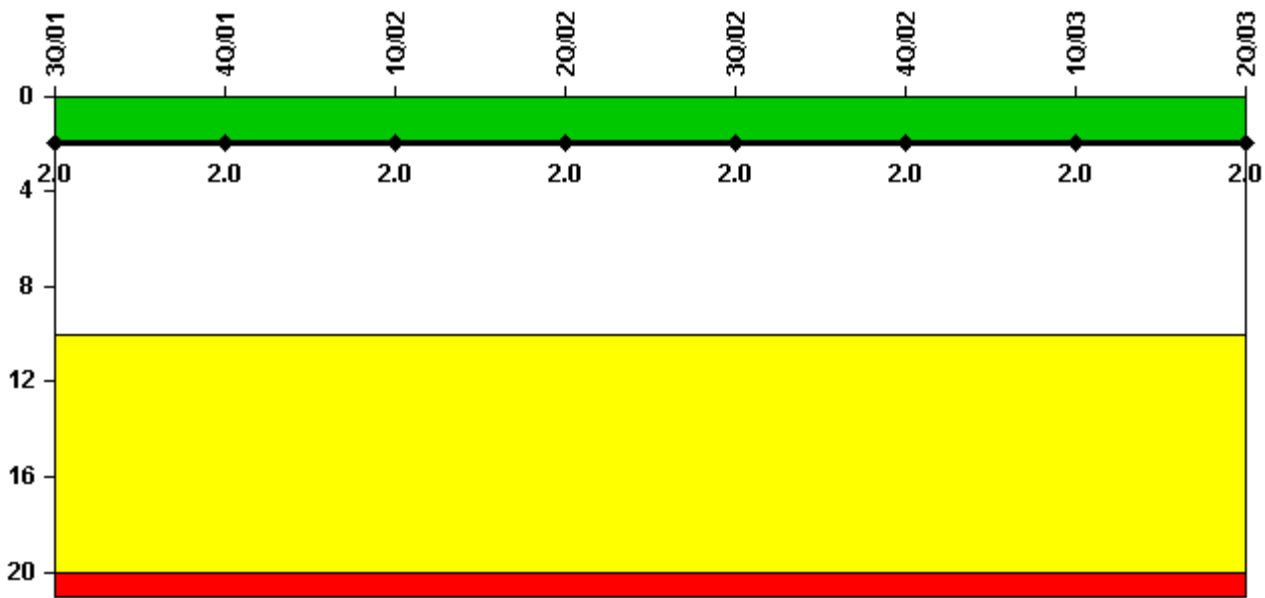
Thresholds: White > 3.0 Yellow > 6.0 Red > 25.0

Notes

Unplanned Scrams per 7000 Critical Hrs	3Q/01	4Q/01	1Q/02	2Q/02	3Q/02	4Q/02	1Q/03	2Q/03
Unplanned scrams	1.0	0	0	0	0	0	0	0
Critical hours	2174.4	1508.9	1776.0	1818.0	2208.0	2208.0	2160.0	2184.0
Indicator value	1.8	0.9	0.9	1.0	0	0	0	0

Licensee Comments: none

Scrams with Loss of Normal Heat Removal



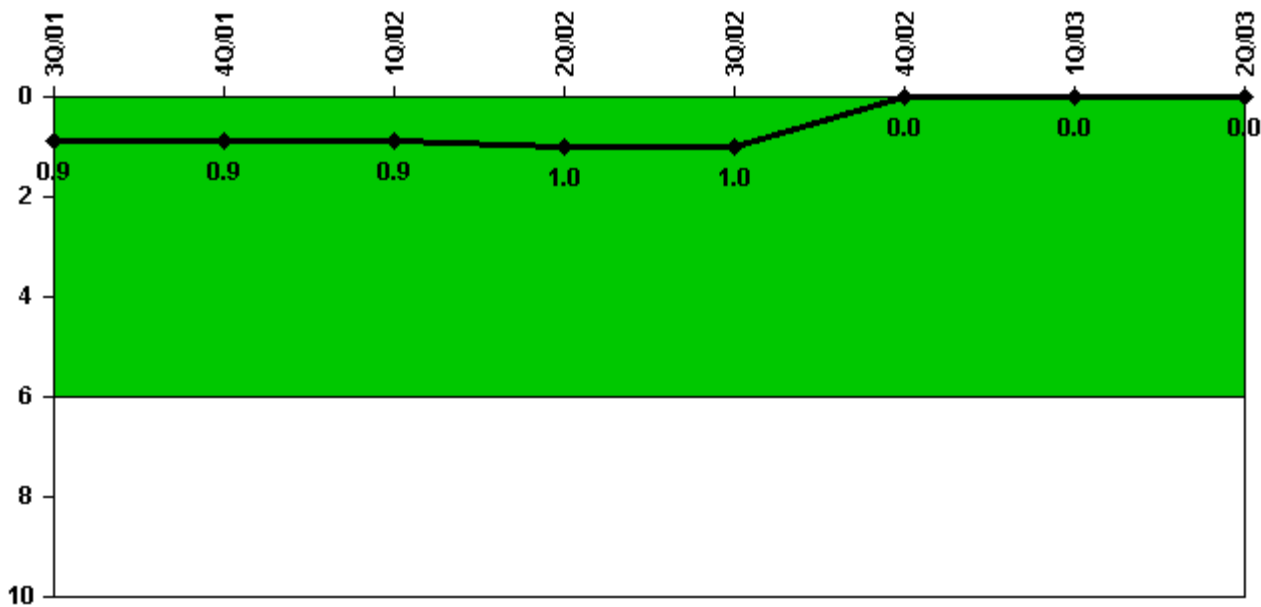
Thresholds: White > 2.0 Yellow > 10.0 Red > 20.0

Notes

Scrams with Loss of Normal Heat Removal	3Q/01	4Q/01	1Q/02	2Q/02	3Q/02	4Q/02	1Q/03	2Q/03
Scrams	1.0	0	0	0	0	0	0	0
Indicator value	2.0	2.0	2.0	2.0	2.0	2.0	2.0	2.0

Licensee Comments: none

Unplanned Power Changes per 7000 Critical Hrs



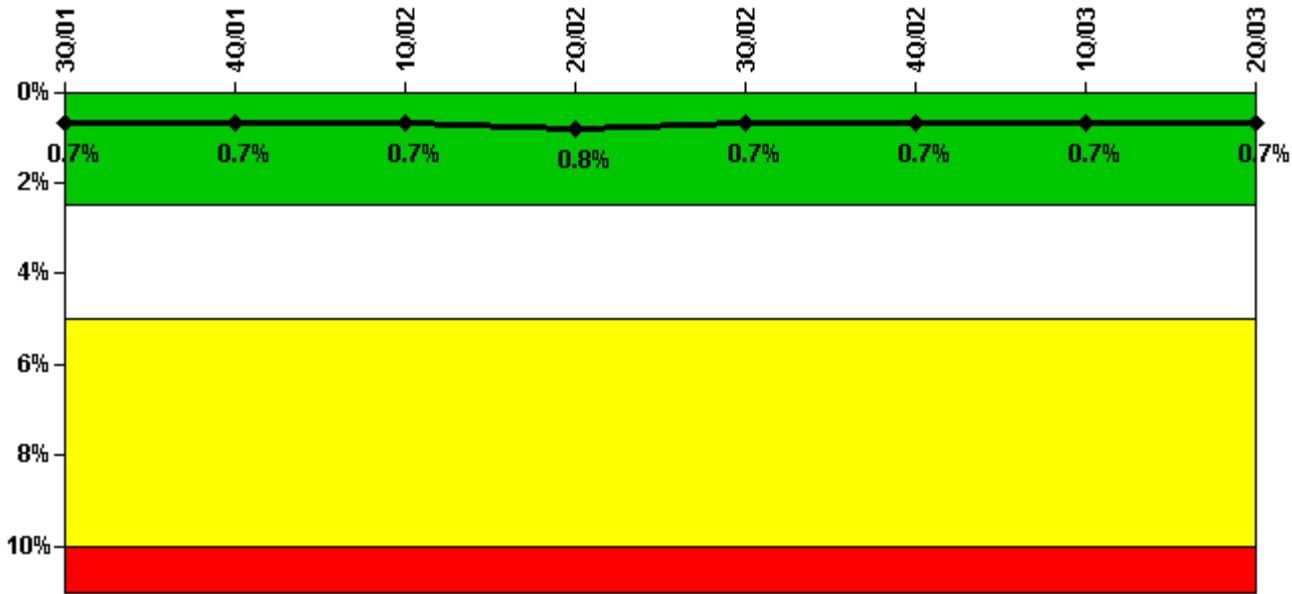
Thresholds: White > 6.0

Notes

Unplanned Power Changes per 7000 Critical Hrs	3Q/01	4Q/01	1Q/02	2Q/02	3Q/02	4Q/02	1Q/03	2Q/03
Unplanned power changes	0	1.0	0	0	0	0	0	0
Critical hours	2174.4	1508.9	1776.0	1818.0	2208.0	2208.0	2160.0	2184.0
Indicator value	0.9	0.9	0.9	1.0	1.0	0	0	0

Licensee Comments: none

Safety System Unavailability, Emergency AC Power



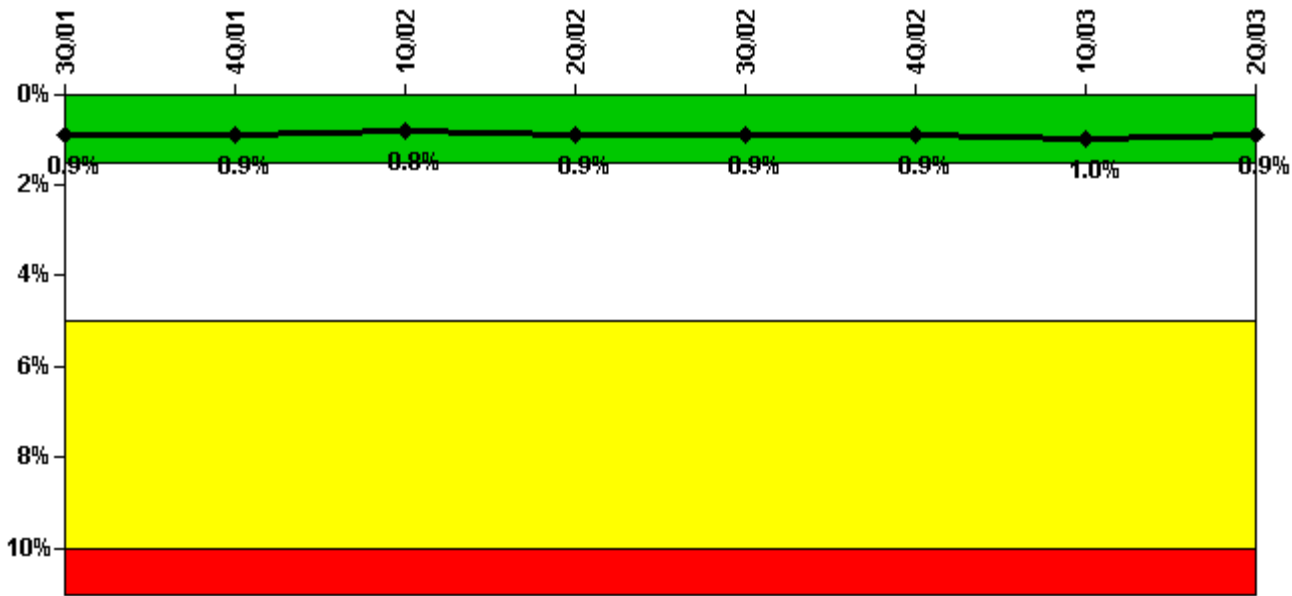
Thresholds: White > 2.5% Yellow > 5.0% Red > 10.0%

Notes

Safety System Unavailability, Emergency AC Power	3Q/01	4Q/01	1Q/02	2Q/02	3Q/02	4Q/02	1Q/03	2Q/03
Train 1								
Planned unavailable hours	26.88	21.84	0.09	37.86	0.07	17.39	10.21	20.46
Unplanned unavailable hours	60.07	0	0	0	0	3.27	0.52	0
Fault exposure hours	0	0	0	0	0	0	0	0
Effective Reset hours	0	0	0	0	0	0	0	0
Required hours	2208.00	2208.00	2160.00	2184.00	2208.00	2208.00	2160.00	2184.00
Train 2								
Planned unavailable hours	5.93	0.02	28.13	0.09	20.92	0.06	26.76	0.06
Unplanned unavailable hours	0	0	0	16.65	0	0	0	0
Fault exposure hours	0	0	0	0	0	0	0	0
Effective Reset hours	0	0	0	0	0	0	0	0
Required hours	2208.00	2208.00	2160.00	2184.00	2208.00	2208.00	2160.00	2184.00
Indicator value	0.7%	0.7%	0.7%	0.8%	0.7%	0.7%	0.7%	0.7%

Licensee Comments: none

Safety System Unavailability, High Pressure Injection System (HPSI)



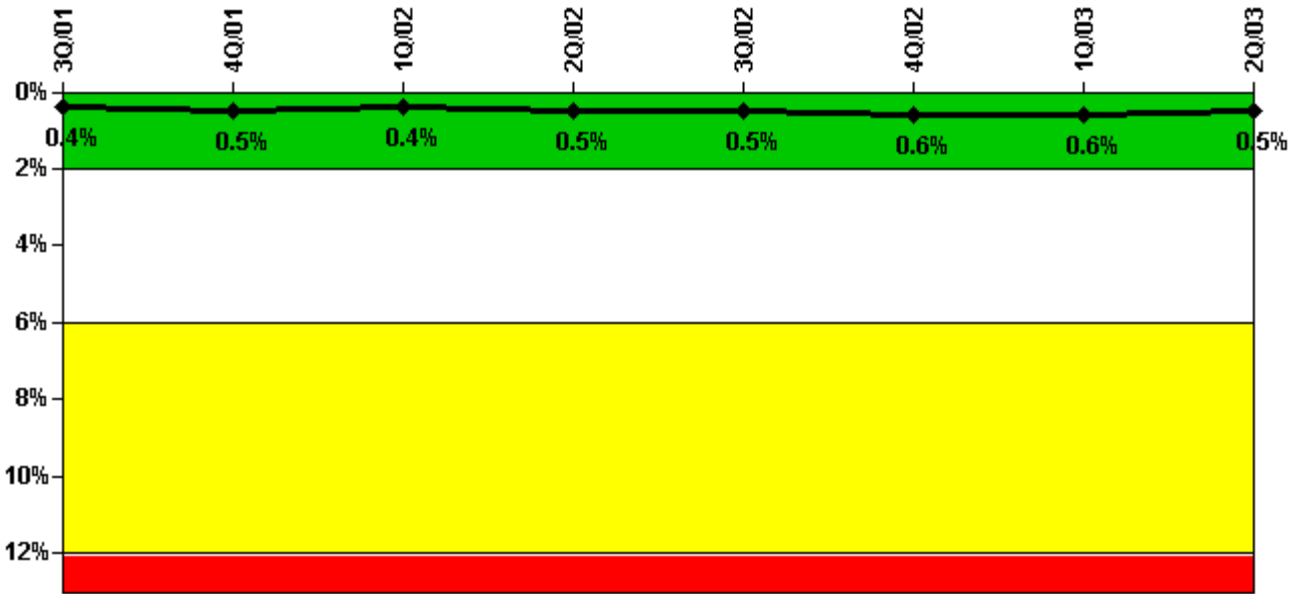
Thresholds: White > 1.5% Yellow > 5.0% Red > 10.0%

Notes

Safety System Unavailability, High Pressure Injection System (HPSI)	3Q/01	4Q/01	1Q/02	2Q/02	3Q/02	4Q/02	1Q/03	2Q/03
Train 1								
Planned unavailable hours	29.17	17.52	13.70	24.62	9.00	11.40	18.55	4.49
Unplanned unavailable hours	0	0	0	0	0	0	14.45	0
Fault exposure hours	0	0	0	0	0	0	0	0
Effective Reset hours	0	0	0	0	0	0	0	0
Required hours	2174.40	1508.90	1776.02	1818.02	2208.00	2208.00	2160.00	2184.00
Train 2								
Planned unavailable hours	7.69	8.35	21.95	22.77	18.08	8.52	23.42	20.77
Unplanned unavailable hours	0	0	0	0	0	4.23	0	0
Fault exposure hours	0	0	0	0	0	0	0	0
Effective Reset hours	0	0	0	0	0	0	0	0
Required hours	2174.40	1508.90	1776.02	1818.02	2208.00	2208.00	2160.00	2184.00
Indicator value	0.9%	0.9%	0.8%	0.9%	0.9%	0.9%	1.0%	0.9%

Licensee Comments: none

Safety System Unavailability, Heat Removal System (AFW)



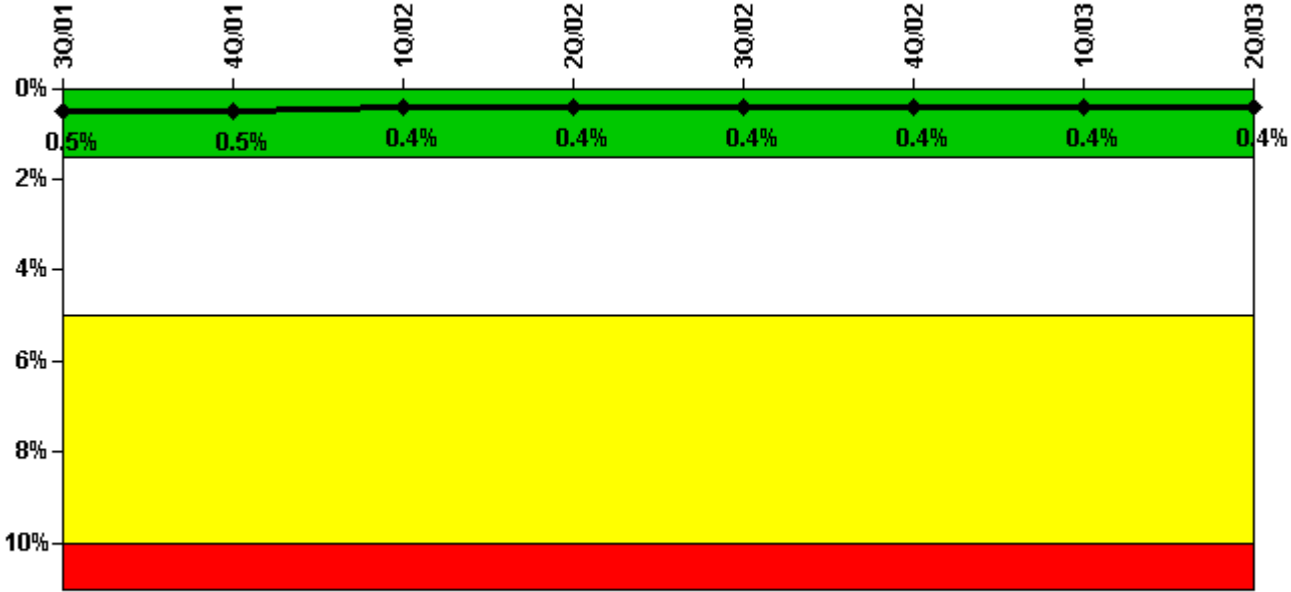
Thresholds: White > 2.0% Yellow > 6.0% Red > 12.0%

Notes

Safety System Unavailability, Heat Removal System (AFW)	3Q/01	4Q/01	1Q/02	2Q/02	3Q/02	4Q/02	1Q/03	2Q/03
Train 1								
Planned unavailable hours	17.19	19.76	0.63	33.74	1.45	20.53	10.93	5.88
Unplanned unavailable hours	0	14.52	0	4.37	38.89	32.32	8.35	19.27
Fault exposure hours	0	0	0	0	0	0	0	0
Effective Reset hours	0	0	0	0	0	0	0	0
Required hours	2174.40	1508.90	1776.02	1818.02	2208.00	2208.00	2160.00	2184.00
Train 2								
Planned unavailable hours	5.50	1.40	10.90	1.43	16.72	1.43	11.15	1.08
Unplanned unavailable hours	0	0	0	0	0	4.23	0	0
Fault exposure hours	0	0	0	0	0	0	0	0
Effective Reset hours	0	0	0	0	0	0	0	0
Required hours	2174.40	1508.90	1776.02	1818.02	2208.00	2208.00	2160.00	2184.00
Train 3								
Planned unavailable hours	0.67	0.94	0	0.78	0.87	0.63	0.90	0.45
Unplanned unavailable hours	0	0	0	0	0	0	0	0
Fault exposure hours	0	0	0	0	0	0	0	0
Effective Reset hours	0	0	0	0	0	0	0	0
Required hours	2174.40	1508.90	1776.02	1818.02	2208.00	2208.00	2160.00	2184.00
Indicator value	0.4%	0.5%	0.4%	0.5%	0.5%	0.6%	0.6%	0.5%

Licensee Comments: none

Safety System Unavailability, Residual Heat Removal System



Thresholds: White > 1.5% Yellow > 5.0% Red > 10.0%

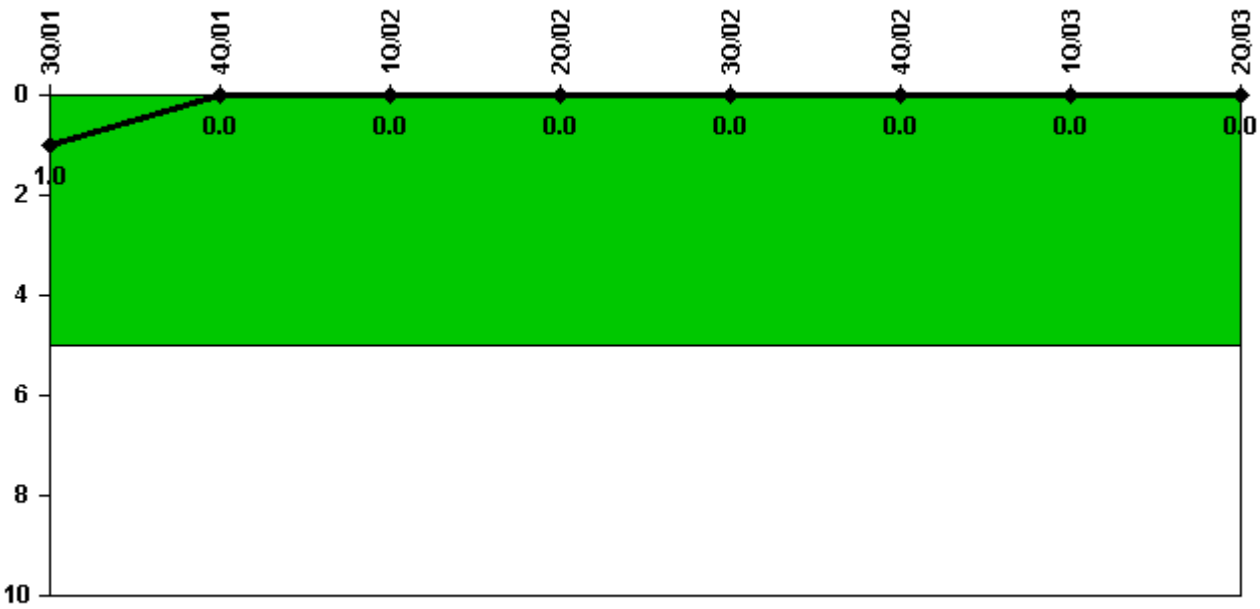
Notes

Safety System Unavailability, Residual Heat Removal System	3Q/01	4Q/01	1Q/02	2Q/02	3Q/02	4Q/02	1Q/03	2Q/03
Train 1								
Planned unavailable hours	25.86	37.19	9.95	23.66	2.90	13.93	11.27	15.76
Unplanned unavailable hours	0	0	0	0	0	0	0	0
Fault exposure hours	0	0	0	0	0	0	0	0
Effective Reset hours	0	0	0	0	0	0	0	0
Required hours	2208.00	1567.70	1785.00	1851.77	2208.00	2208.00	2160.00	2184.00
Train 2								
Planned unavailable hours	10.09	7.83	26.74	8.53	26.66	3.70	21.64	3.41
Unplanned unavailable hours	0	0	0	0	0	4.23	0	0
Fault exposure hours	0	0	0	0	0	0	0	0
Effective Reset hours	0	0	0	0	0	0	0	0
Required hours	2208.00	1567.70	1785.00	1851.77	2208.00	2208.00	2160.00	2184.00
Train 3								
Planned unavailable hours	0	0	0	0	0	0	0	0
Unplanned unavailable hours	0	0	0	0	0	0	0	0
Fault exposure hours	0	0	0	0	0	0	0	0
Effective Reset hours	0	0	0	0	0	0	0	0
Required hours	0	356.70	49.58	216.18	0	0	0	0
Train 4								
Planned unavailable hours	0	0	0	0.02	0	0	0	0

Unplanned unavailable hours	0	0	0	0	0	0	0	0
Fault exposure hours	0	0	0	0	0	0	0	0
Effective Reset hours	0	0	0	0	0	0	0	0
Required hours	0	469.78	212.75	109.90	0	0	0	0
Indicator value	0.5%	0.5%	0.4%	0.4%	0.4%	0.4%	0.4%	0.4%

Licensee Comments: none

Safety System Functional Failures (PWR)



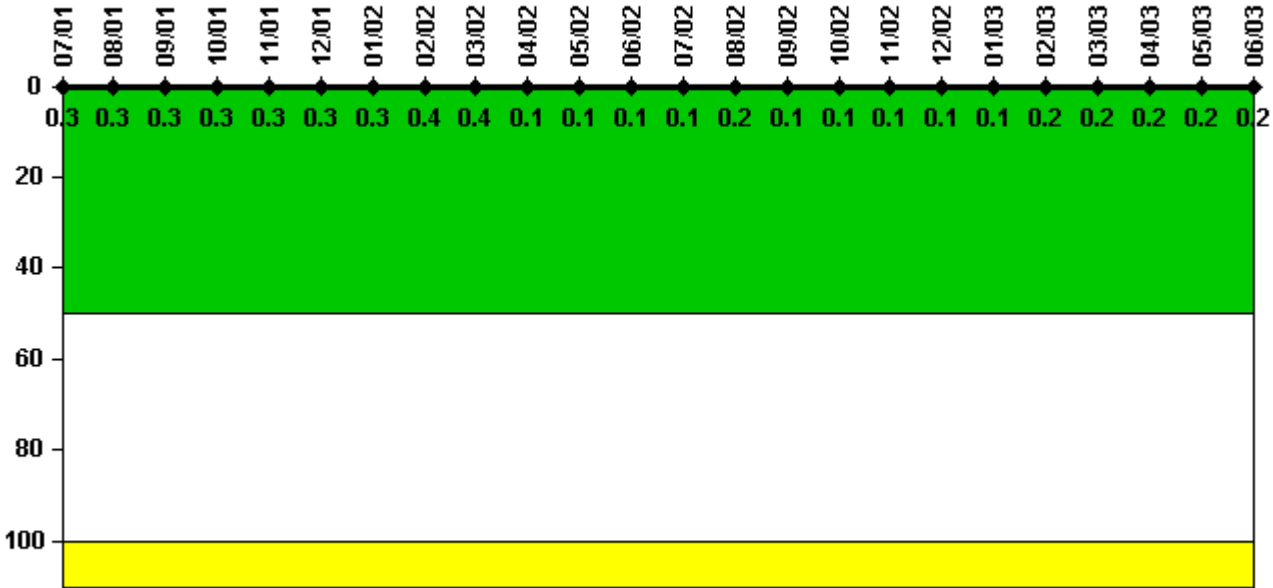
Thresholds: White > 5.0

Notes

Safety System Functional Failures (PWR)	3Q/01	4Q/01	1Q/02	2Q/02	3Q/02	4Q/02	1Q/03	2Q/03
Safety System Functional Failures	0	0	0	0	0	0	0	0
Indicator value	1	0	0	0	0	0	0	0

Licensee Comments: none

Reactor Coolant System Activity



Thresholds: White > 50.0 Yellow > 100.0

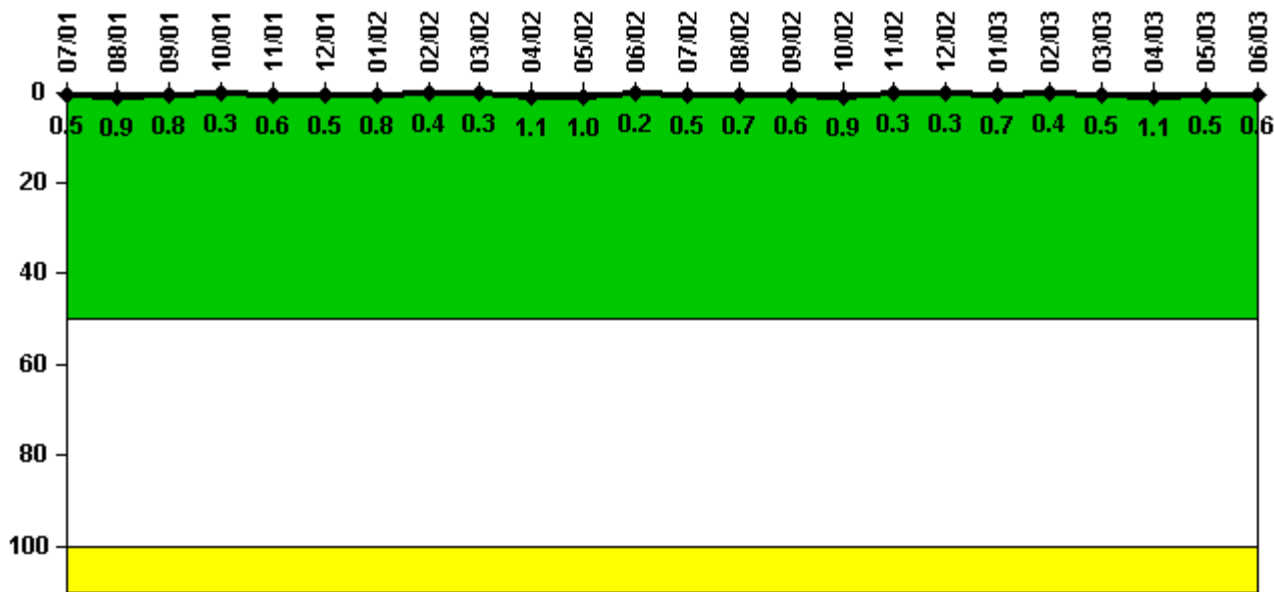
Notes

Reactor Coolant System Activity	7/01	8/01	9/01	10/01	11/01	12/01	1/02	2/02	3/02	4/02	5/02	6/02
Maximum activity	0.003000	0.003000	0.003000	0.003000	0.003000	0.003000	0.003000	0.004000	0.004000	0.001000	0.001000	0.001000
Technical specification limit	1.0	1.0	1.0	1.0	1.0	1.0	1.0	1.0	1.0	1.0	1.0	1.0
Indicator value	0.3	0.3	0.3	0.3	0.3	0.3	0.3	0.4	0.4	0.1	0.1	0.1

Reactor Coolant System Activity	7/02	8/02	9/02	10/02	11/02	12/02	1/03	2/03	3/03	4/03	5/03	6/03
Maximum activity	0.001000	0.002000	0.001000	0.001000	0.001000	0.001000	0.001000	0.002000	0.002000	0.002000	0.002000	0.002000
Technical specification limit	1.0	1.0	1.0	1.0	1.0	1.0	1.0	1.0	1.0	1.0	1.0	1.0
Indicator value	0.1	0.2	0.1	0.1	0.1	0.1	0.1	0.2	0.2	0.2	0.2	0.2

Licensee Comments: none

Reactor Coolant System Leakage



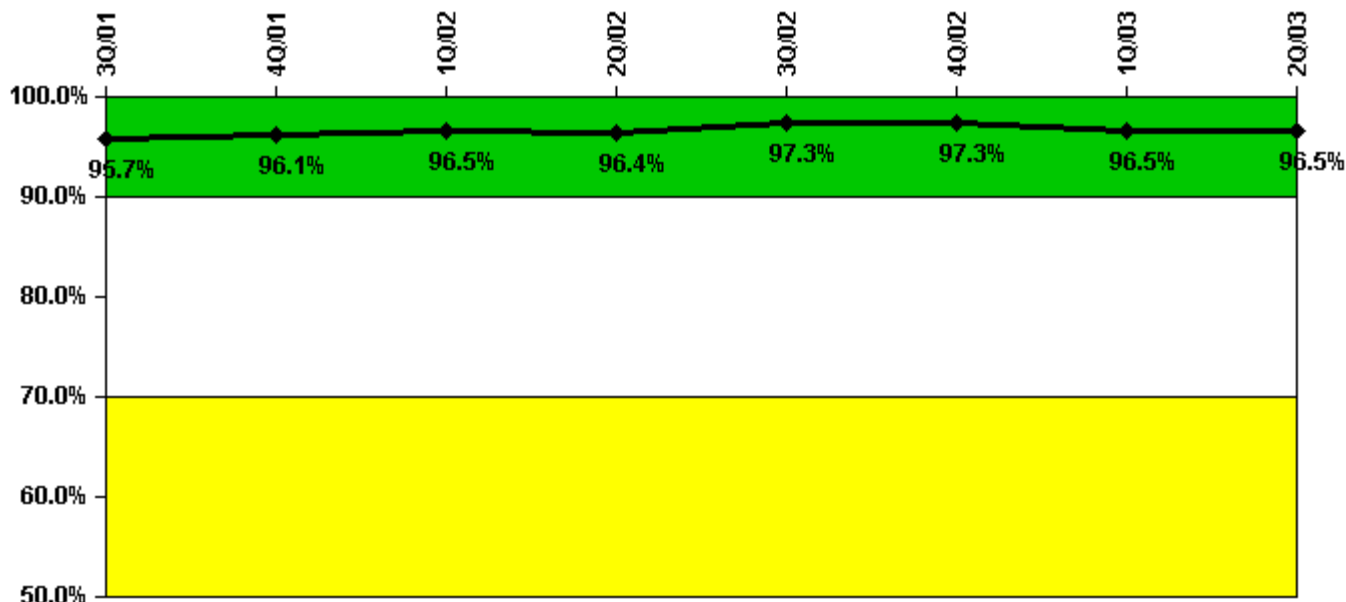
Thresholds: White > 50.0 Yellow > 100.0

Notes

Reactor Coolant System Leakage	7/01	8/01	9/01	10/01	11/01	12/01	1/02	2/02	3/02	4/02	5/02	6/02
Maximum leakage	0.047	0.090	0.075	0.030	0.056	0.053	0.078	0.039	0.030	0.107	0.100	0.024
Technical specification limit	10.0	10.0	10.0	10.0	10.0	10.0	10.0	10.0	10.0	10.0	10.0	10.0
Indicator value	0.5	0.9	0.8	0.3	0.6	0.5	0.8	0.4	0.3	1.1	1.0	0.2
Reactor Coolant System Leakage	7/02	8/02	9/02	10/02	11/02	12/02	1/03	2/03	3/03	4/03	5/03	6/03
Maximum leakage	0.046	0.071	0.056	0.085	0.032	0.034	0.071	0.037	0.045	0.108	0.049	0.055
Technical specification limit	10.0	10.0	10.0	10.0	10.0	10.0	10.0	10.0	10.0	10.0	10.0	10.0
Indicator value	0.5	0.7	0.6	0.9	0.3	0.3	0.7	0.4	0.5	1.1	0.5	0.6

Licensee Comments: none

Drill/Exercise Performance



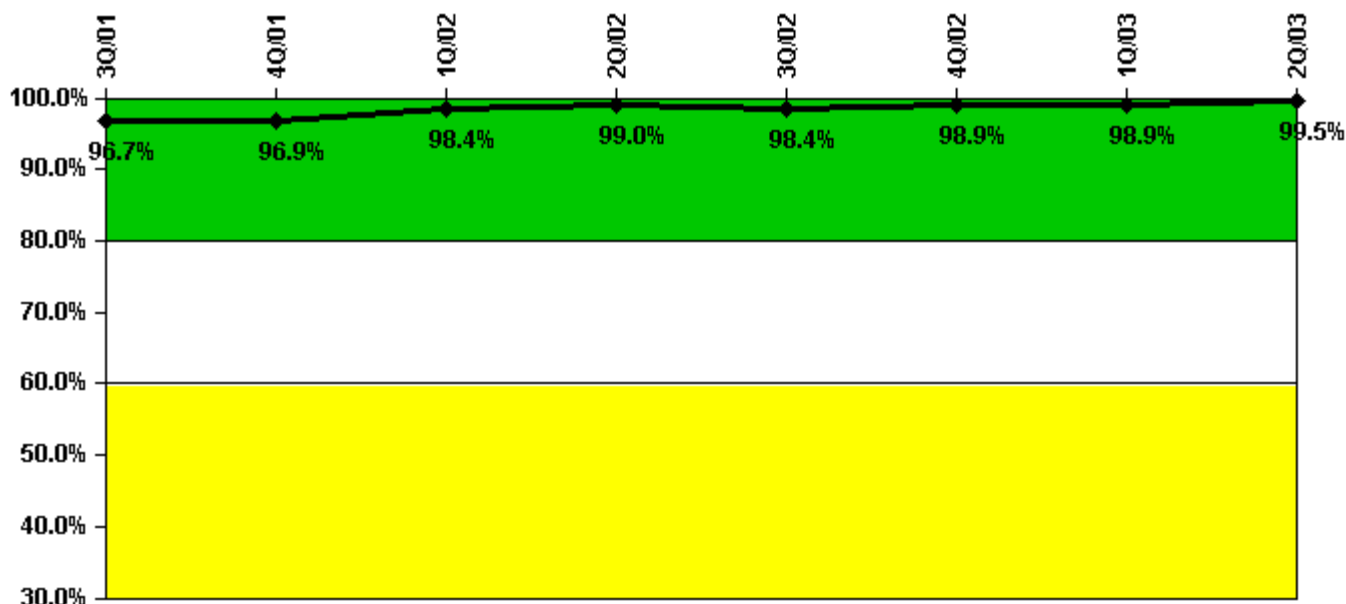
Thresholds: White < 90.0% Yellow < 70.0%

Notes

Drill/Exercise Performance	3Q/01	4Q/01	1Q/02	2Q/02	3Q/02	4Q/02	1Q/03	2Q/03
Successful opportunities	9.0	198.0	19.0	8.0	108.0	137.0	14.0	8.0
Total opportunities	9.0	205.0	20.0	8.0	110.0	141.0	18.0	8.0
Indicator value	95.7%	96.1%	96.5%	96.4%	97.3%	97.3%	96.5%	96.5%

Licensee Comments: none

ERO Drill Participation



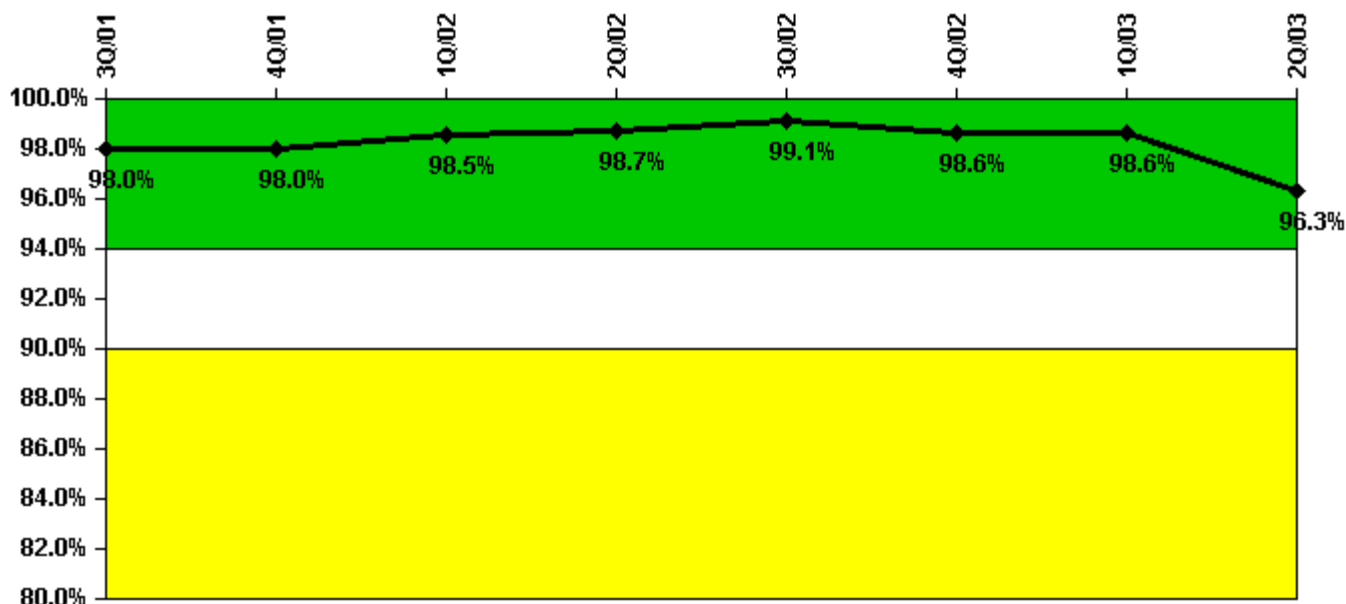
Thresholds: White < 80.0% Yellow < 60.0%

Notes

ERO Drill Participation	3Q/01	4Q/01	1Q/02	2Q/02	3Q/02	4Q/02	1Q/03	2Q/03
Participating Key personnel	176.0	188.0	188.0	191.0	190.0	183.0	181.0	181.0
Total Key personnel	182.0	194.0	191.0	193.0	193.0	185.0	183.0	182.0
Indicator value	96.7%	96.9%	98.4%	99.0%	98.4%	98.9%	98.9%	99.5%

Licensee Comments: none

Alert & Notification System



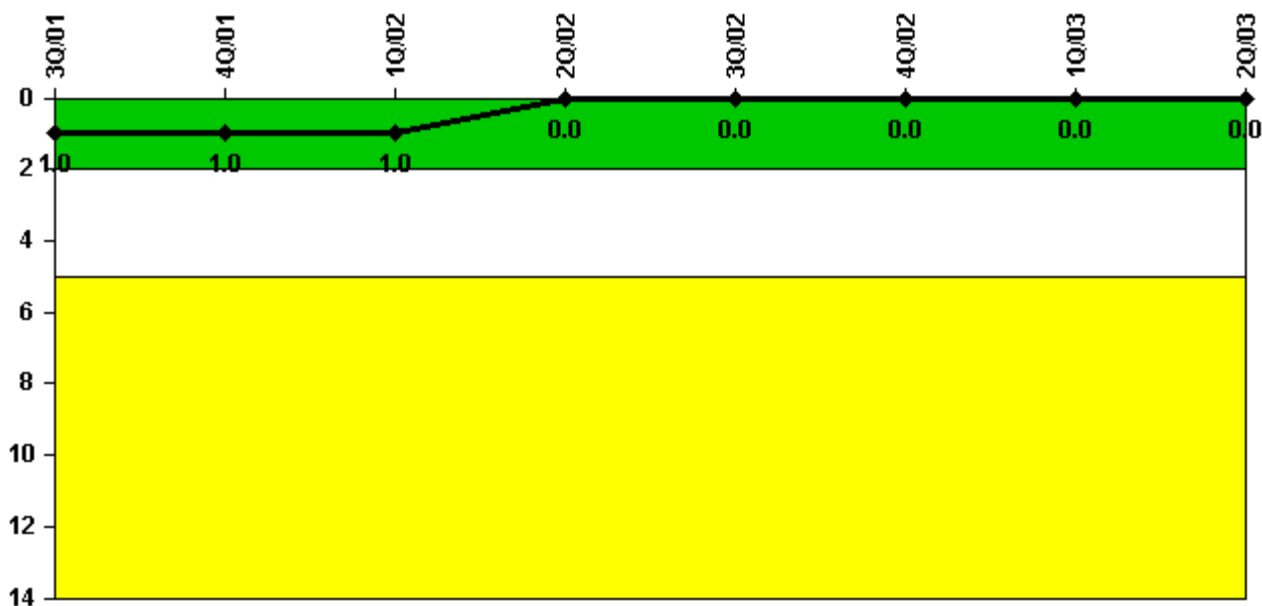
Thresholds: White < 94.0% Yellow < 90.0%

Notes

Alert & Notification System	3Q/01	4Q/01	1Q/02	2Q/02	3Q/02	4Q/02	1Q/03	2Q/03
Successful siren-tests	375	466	390	383	351	459	307	461
Total sirens-tests	390	468	390	387	360	468	307	504
Indicator value	98.0%	98.0%	98.5%	98.7%	99.1%	98.6%	98.6%	96.3%

Licensee Comments: none

Occupational Exposure Control Effectiveness



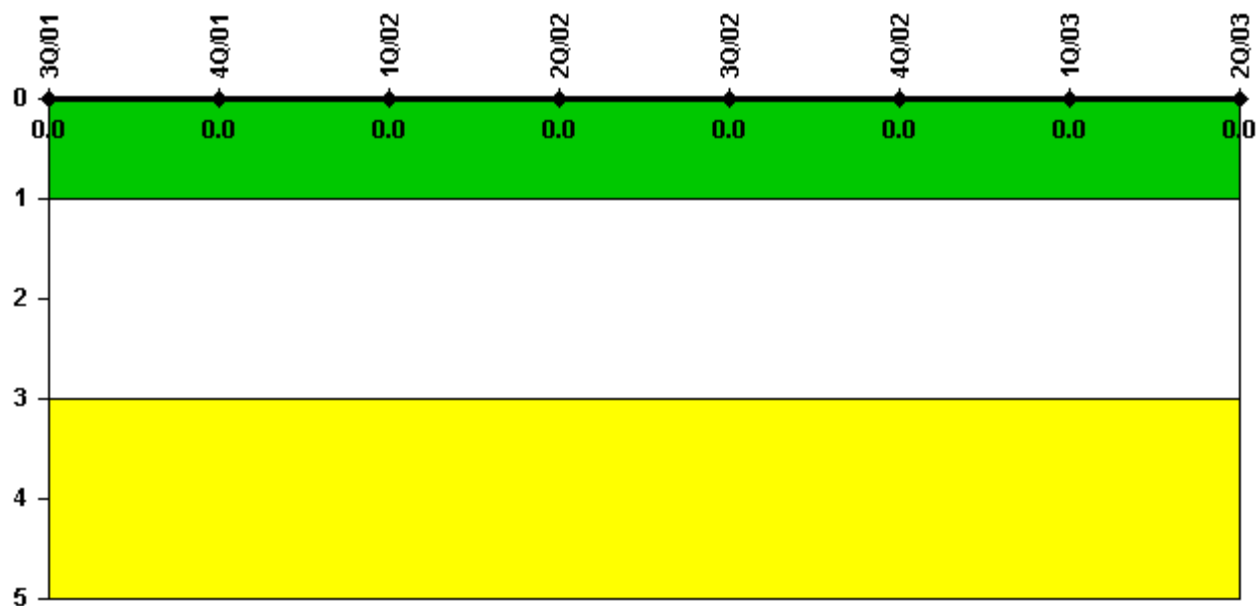
Thresholds: White > 2.0 Yellow > 5.0

Notes

Occupational Exposure Control Effectiveness	3Q/01	4Q/01	1Q/02	2Q/02	3Q/02	4Q/02	1Q/03	2Q/03
High radiation area occurrences	0	0	0	0	0	0	0	0
Very high radiation area occurrences	0	0	0	0	0	0	0	0
Unintended exposure occurrences	0	0	0	0	0	0	0	0
Indicator value	1	1	1	0	0	0	0	0

Licensee Comments: none

RETS/ODCM Radiological Effluent



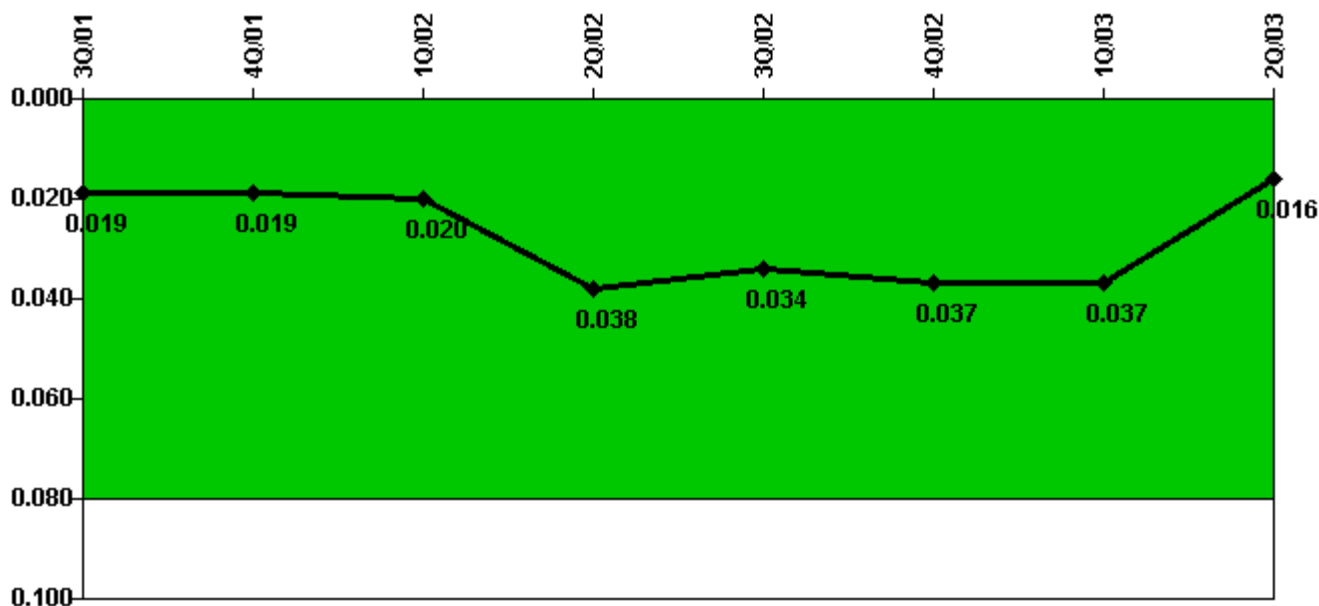
Thresholds: White > 1.0 Yellow > 3.0

Notes

RETS/ODCM Radiological Effluent	3Q/01	4Q/01	1Q/02	2Q/02	3Q/02	4Q/02	1Q/03	2Q/03
RETS/ODCM occurrences	0	0	0	0	0	0	0	0
Indicator value	0	0	0	0	0	0	0	0

Licensee Comments: none

Protected Area Security Performance Index



Thresholds: White > 0.080

Notes

Protected Area Security Performance Index	3Q/01	4Q/01	1Q/02	2Q/02	3Q/02	4Q/02	1Q/03	2Q/03
IDS compensatory hours	71.00	65.30	87.00	804.00	92.60	86.90	141.60	54.60
CCTV compensatory hours	69.5	14.6	39.4	0	34.1	58.4	10.4	19.2
IDS normalization factor	1.85	1.85	1.85	1.85	2.00	2.00	2.00	2.15
CCTV normalization factor	1.2	1.2	1.2	1.2	1.2	1.2	1.2	1.3
Index Value	0.019	0.019	0.020	0.038	0.034	0.037	0.037	0.016

Licensee Comments: none

Personnel Screening Program



Thresholds: White > 2.0 Yellow > 5.0

Notes

Personnel Screening Program	3Q/01	4Q/01	1Q/02	2Q/02	3Q/02	4Q/02	1Q/03	2Q/03
Program failures	0	0	0	0	0	0	0	0
Indicator value	0	0	0	0	0	0	0	0

Licensee Comments: none

FFD/Personnel Reliability



Thresholds: White > 2.0 Yellow > 5.0

Notes

FFD/Personnel Reliability	3Q/01	4Q/01	1Q/02	2Q/02	3Q/02	4Q/02	1Q/03	2Q/03
Program Failures	0	0	0	0	0	0	0	0
Indicator value	0	0	0	0	0	0	0	0

Licensee Comments: none

▲ [PI Summary](#) | [Inspection Findings Summary](#) | [Reactor Oversight Process](#)

Last Modified: July 22, 2003