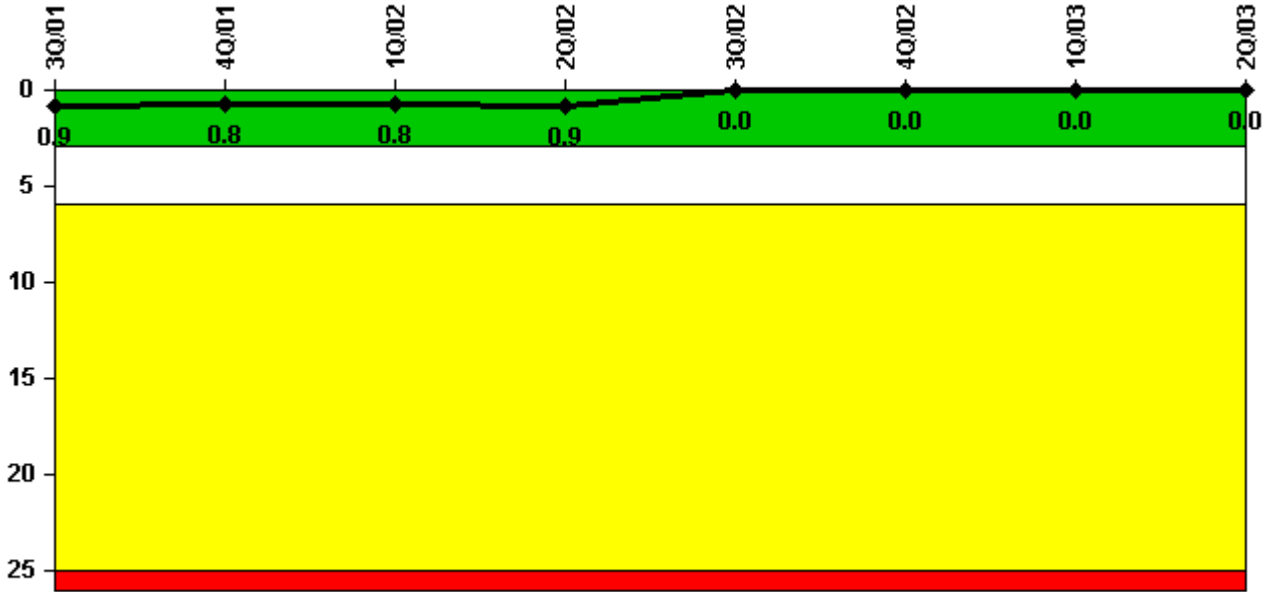


Ocone 1

2Q/2003 Performance Indicators

Licensee's General Comments: none

Unplanned Scrams per 7000 Critical Hrs



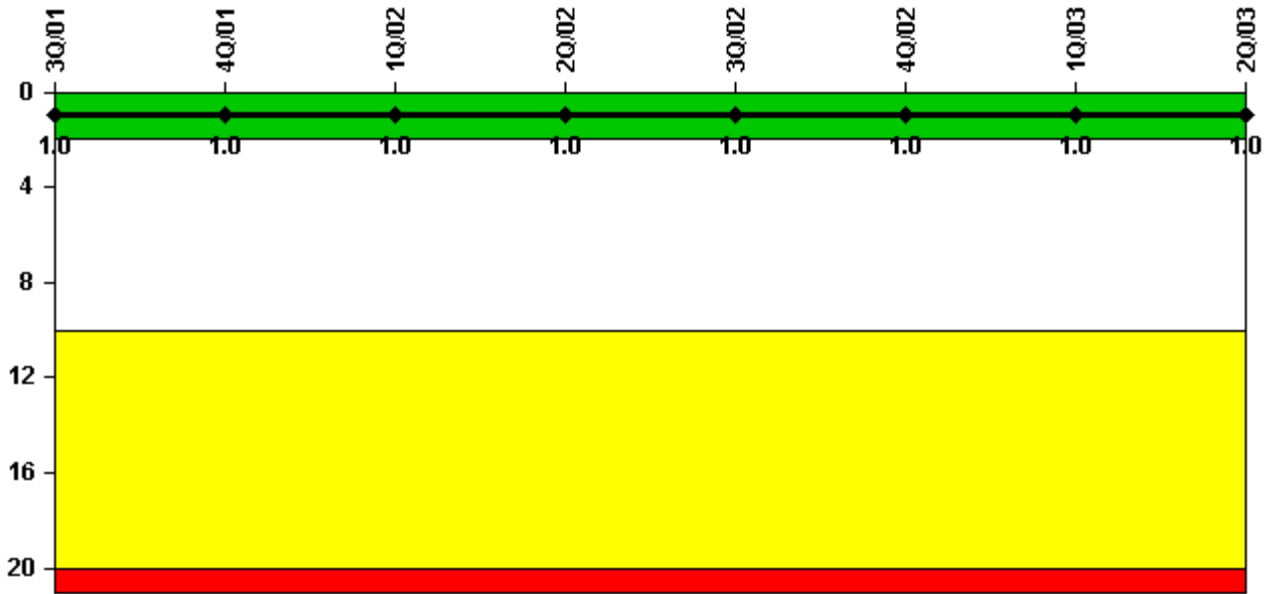
Thresholds: White > 3.0 Yellow > 6.0 Red > 25.0

Notes

Unplanned Scrams per 7000 Critical Hrs	3Q/01	4Q/01	1Q/02	2Q/02	3Q/02	4Q/02	1Q/03	2Q/03
Unplanned scrams	1.0	0	0	0	0	0	0	0
Critical hours	2153.4	2209.0	1949.4	1529.2	2162.0	2210.0	2160.0	2183.0
Indicator value	0.9	0.8	0.8	0.9	0	0	0	0

Licensee Comments: none

Scrams with Loss of Normal Heat Removal



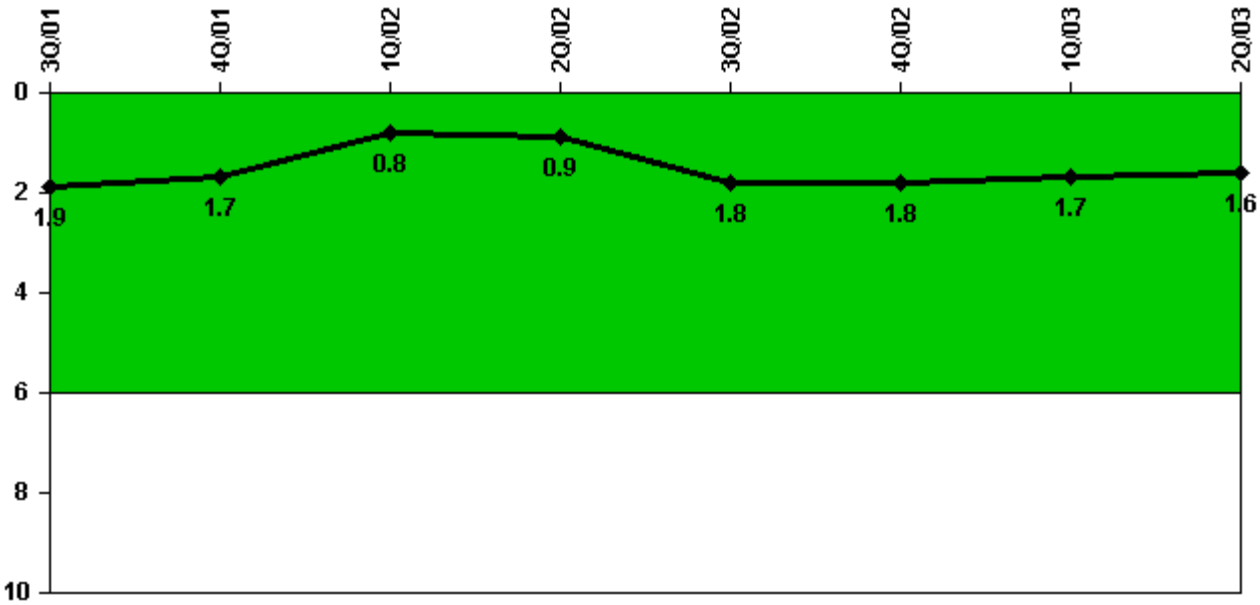
Thresholds: White > 2.0 Yellow > 10.0 Red > 20.0

Notes

Scrams with Loss of Normal Heat Removal	3Q/01	4Q/01	1Q/02	2Q/02	3Q/02	4Q/02	1Q/03	2Q/03
Scrams	1.0	0	0	0	0	0	0	0
Indicator value	1.0	1.0	1.0	1.0	1.0	1.0	1.0	1.0

Licensee Comments: none

Unplanned Power Changes per 7000 Critical Hrs



Thresholds: White > 6.0

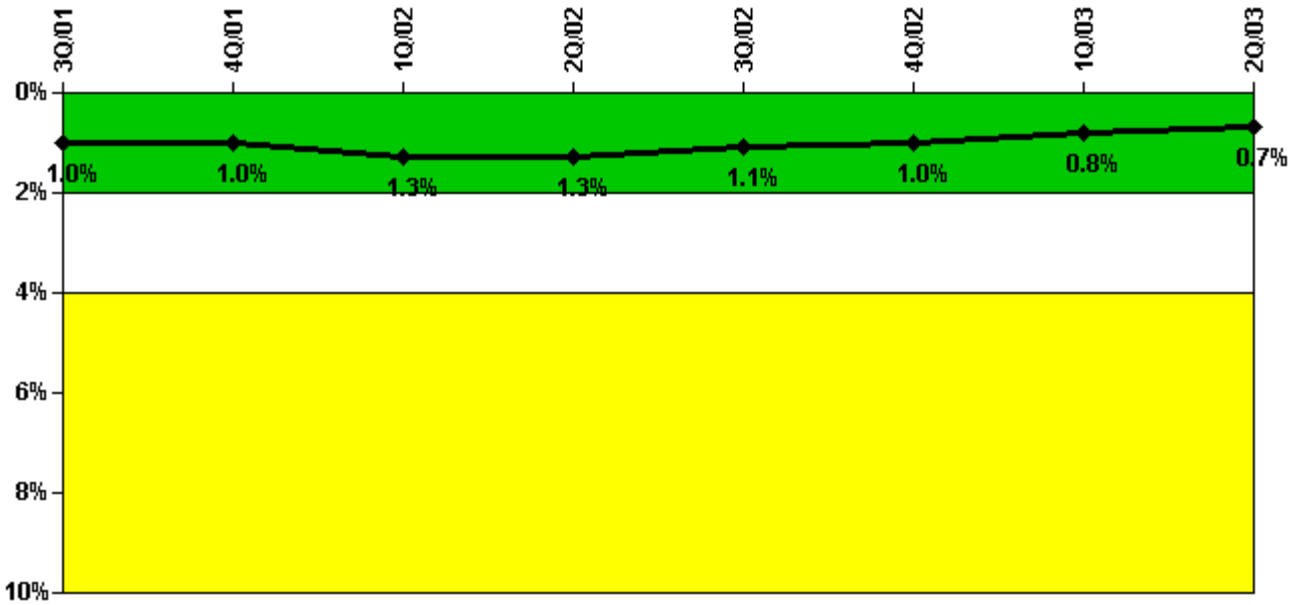
Notes

Unplanned Power Changes per 7000 Critical Hrs	3Q/01	4Q/01	1Q/02	2Q/02	3Q/02	4Q/02	1Q/03	2Q/03
Unplanned power changes	0	0	0	1.0	1.0	0	0	1.0
Critical hours	2153.4	2209.0	1949.4	1529.2	2162.0	2209.0	2160.0	2183.0
Indicator value	1.9	1.7	0.8	0.9	1.8	1.8	1.7	1.6

Licensee Comments:

2Q/03: One unplanned power change incurred during the month of May 2003. A power change of greater than 20% did occur due to a dropped control rod 9 in Group 4. PIP O-03-03130 documents this occurrence.

Safety System Unavailability, Emergency AC Power



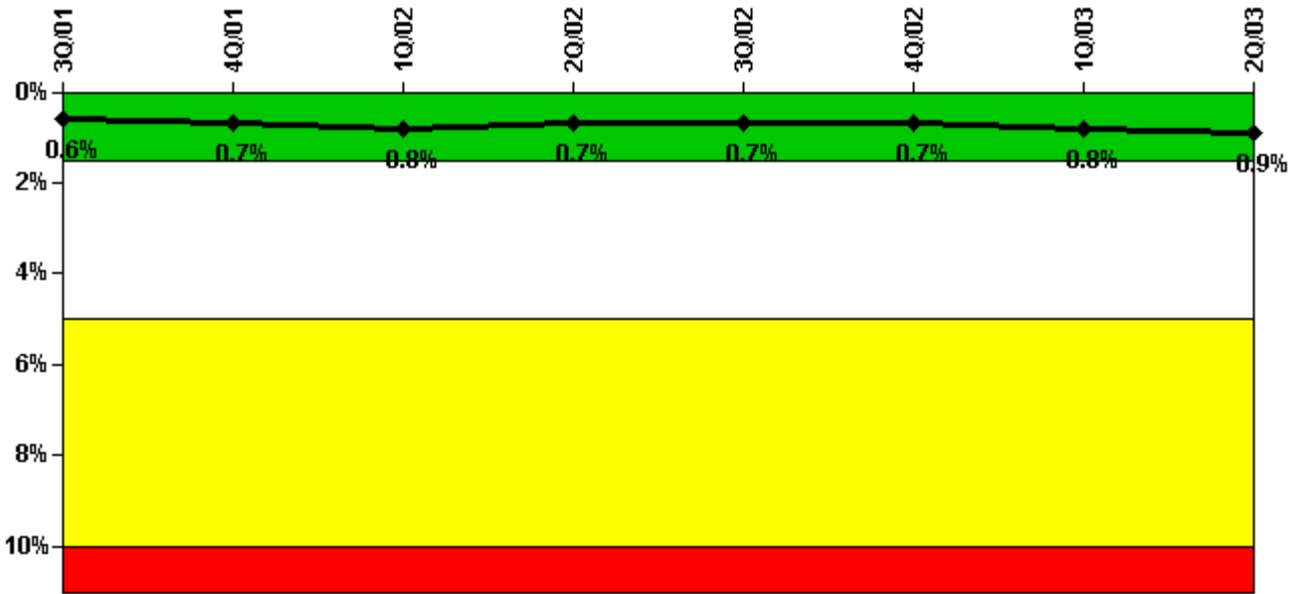
Thresholds: White > 2.0% Yellow > 4.0% Red > 10.0%

Notes

Safety System Unavailability, Emergency AC Power	3Q/01	4Q/01	1Q/02	2Q/02	3Q/02	4Q/02	1Q/03	2Q/03
Train 1								
Planned unavailable hours	0	5.29	86.79	0	0	0	10.19	0.84
Unplanned unavailable hours	0	0	0	0	0	0	0	0
Fault exposure hours	0	0	0	0	0	0	0	0
Effective Reset hours	0	0	0	0	0	0	0	0
Required hours	2208.00	2209.00	2000.75	1584.14	2208.00	2209.00	2160.00	2183.00
Indicator value	1.0%	1.0%	1.3%	1.3%	1.1%	1.0%	0.8%	0.7%

Licensee Comments: none

Safety System Unavailability, High Pressure Injection System (HPSI)



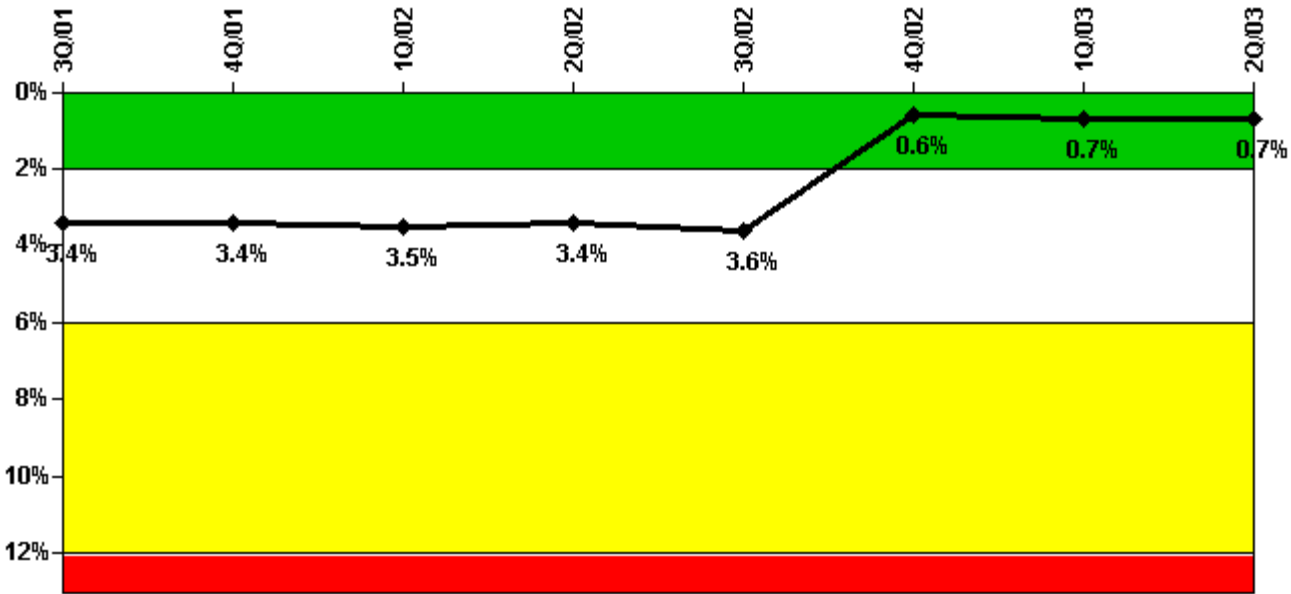
Thresholds: White > 1.5% Yellow > 5.0% Red > 10.0%

Notes

Safety System Unavailability, High Pressure Injection System (HPSI)	3Q/01	4Q/01	1Q/02	2Q/02	3Q/02	4Q/02	1Q/03	2Q/03
Train 1								
Planned unavailable hours	13.89	5.23	36.26	4.46	1.19	0.43	36.32	33.16
Unplanned unavailable hours	0	0	0	0	0	0	0	0
Fault exposure hours	0	0	0	0	0	0	0	0
Effective Reset hours	0	0	0	0	0	0	0	0
Required hours	2208.00	2209.00	1955.20	1560.00	2208.00	2209.00	2160.00	2183.00
Train 2								
Planned unavailable hours	5.14	11.30	40.22	5.17	2.52	21.37	40.40	18.27
Unplanned unavailable hours	0	0	0	0	0	0	0	14.58
Fault exposure hours	0	0	0	0	0	0	0	0
Effective Reset hours	0	0	0	0	0	0	0	0
Required hours	2208.00	2209.00	1955.20	1560.00	2208.00	2209.00	2160.00	2183.00
Indicator value	0.6%	0.7%	0.8%	0.7%	0.7%	0.7%	0.8%	0.9%

Licensee Comments: none

Safety System Unavailability, Heat Removal System (AFW)



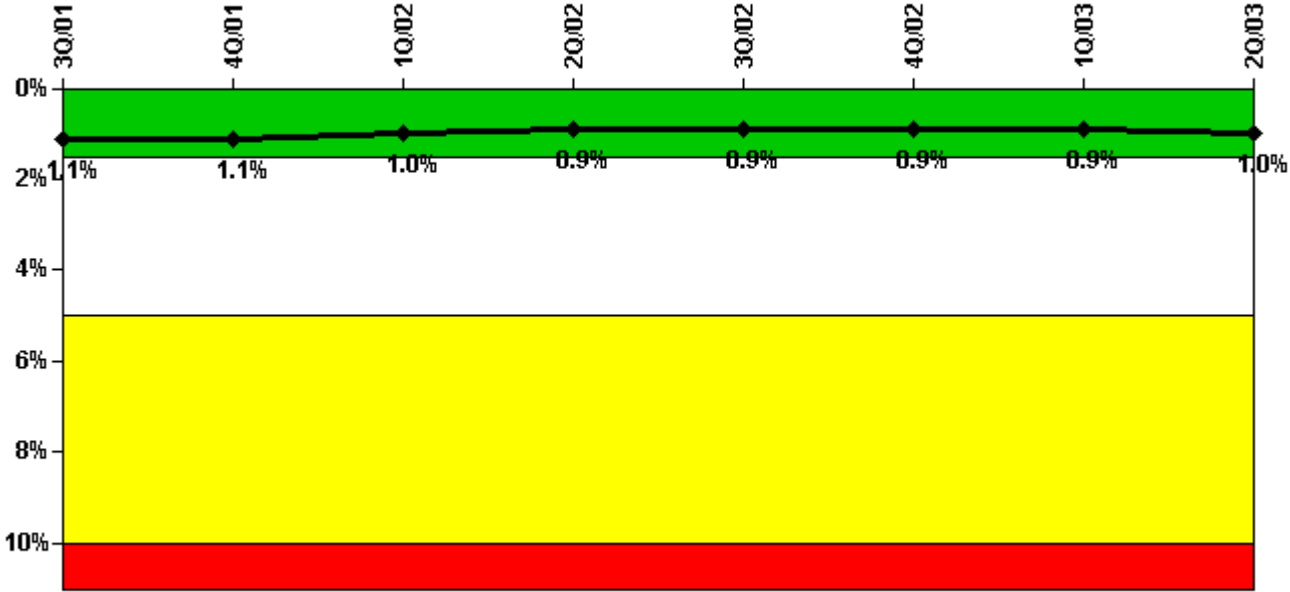
Thresholds: White > 2.0% Yellow > 6.0% Red > 12.0%

Notes

Safety System Unavailability, Heat Removal System (AFW)	3Q/01	4Q/01	1Q/02	2Q/02	3Q/02	4Q/02	1Q/03	2Q/03
Train 1								
Planned unavailable hours	13.90	2.00	13.30	1.80	3.08	9.00	40.50	1.70
Unplanned unavailable hours	0	0	4.20	0	0	0	26.10	0
Fault exposure hours	0	0	0	0	0	0	0	0
Effective Reset hours	0	0	0	0	0	0	0	0
Required hours	2208.00	2209.00	1964.00	1572.00	2208.00	2209.00	2160.00	2183.00
Train 2								
Planned unavailable hours	2.10	1.80	13.40	3.80	5.10	8.20	24.10	1.70
Unplanned unavailable hours	0	0	0	0	114.10	0	0	0
Fault exposure hours	0	0	0	0	0	0	0	0
Effective Reset hours	0	0	0	0	0	2018.50	0	0
Required hours	2208.00	2209.00	1964.00	1572.00	2208.00	2209.00	2160.00	2183.00
Train 3								
Planned unavailable hours	4.40	7.50	5.10	6.25	7.63	12.20	3.40	6.17
Unplanned unavailable hours	0	0	0	0	0	0	0	0
Fault exposure hours	0	0	0	0	0	0	0	0
Effective Reset hours	0	0	0	0	0	0	0	0
Required hours	2208.00	2209.00	1964.00	1572.00	2208.00	2209.00	2160.00	2183.00
Indicator value	3.4%	3.4%	3.5%	3.4%	3.6%	0.6%	0.7%	0.7%

Licensee Comments: none

Safety System Unavailability, Residual Heat Removal System



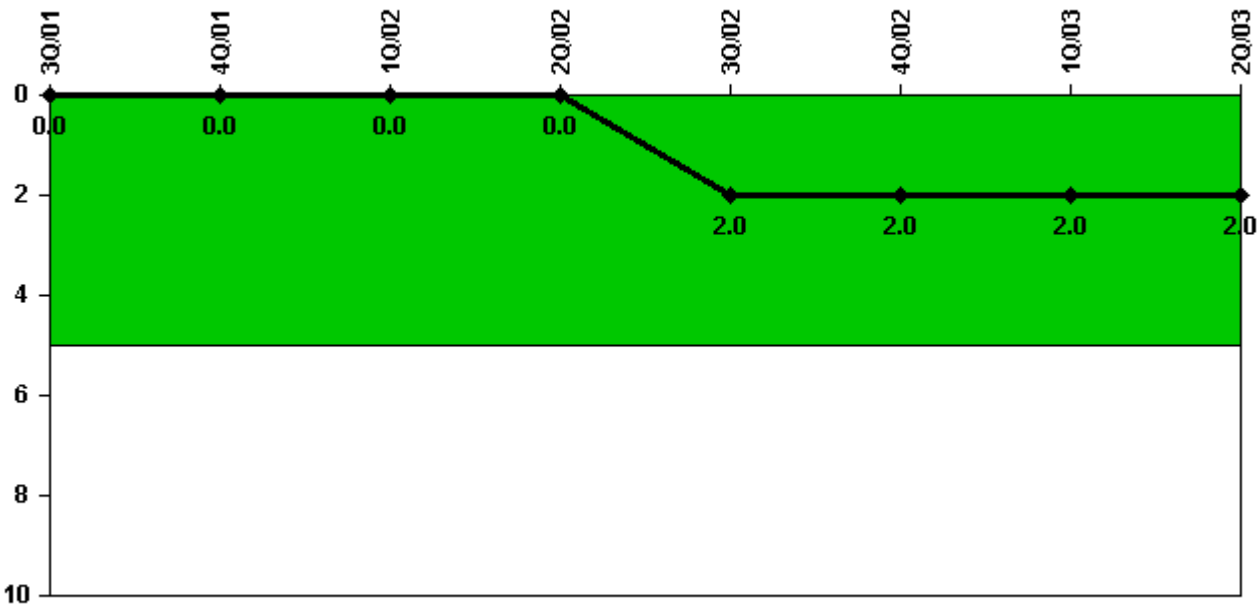
Thresholds: White > 1.5% Yellow > 5.0% Red > 10.0%

Notes

Safety System Unavailability, Residual Heat Removal System	3Q/01	4Q/01	1Q/02	2Q/02	3Q/02	4Q/02	1Q/03	2Q/03
Train 1								
Planned unavailable hours	19.20	9.90	32.20	25.00	13.60	39.30	42.00	34.78
Unplanned unavailable hours	0	0	0	0	0	0	0	0
Fault exposure hours	0	0	0	0	0	0	0	0
Effective Reset hours	0	0	0	0	0	0	0	0
Required hours	2208.00	2209.00	2160.00	2183.00	2208.00	2209.00	2160.00	2183.00
Train 2								
Planned unavailable hours	13.00	9.40	21.70	25.20	27.10	15.30	33.00	31.33
Unplanned unavailable hours	0	0	0	0	0	0	0	0
Fault exposure hours	0	0	0	0	0	0	0	0
Effective Reset hours	0	0	0	0	0	0	0	0
Required hours	2208.00	2209.00	2160.00	2183.00	2208.00	2209.00	2160.00	2183.00
Indicator value	1.1%	1.1%	1.0%	0.9%	0.9%	0.9%	0.9%	1.0%

Licensee Comments: none

Safety System Functional Failures (PWR)



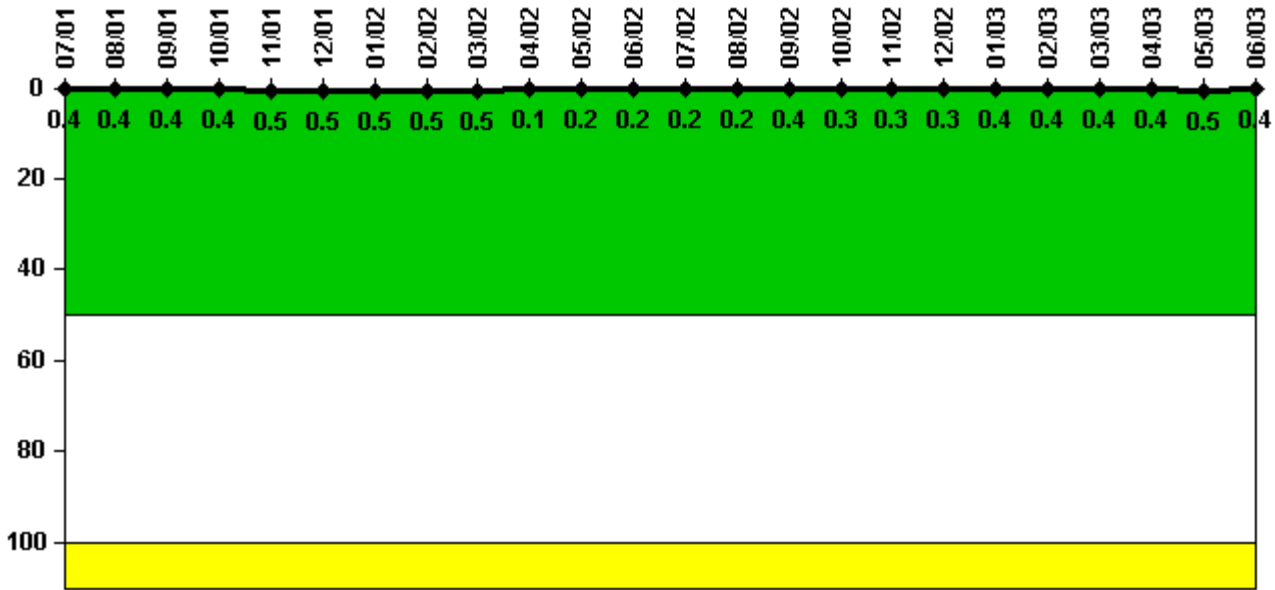
Thresholds: White > 5.0

Notes

Safety System Functional Failures (PWR)	3Q/01	4Q/01	1Q/02	2Q/02	3Q/02	4Q/02	1Q/03	2Q/03
Safety System Functional Failures	0	0	0	0	2	0	0	0
Indicator value	0	0	0	0	2	2	2	2

Licensee Comments: none

Reactor Coolant System Activity



Thresholds: White > 50.0 Yellow > 100.0

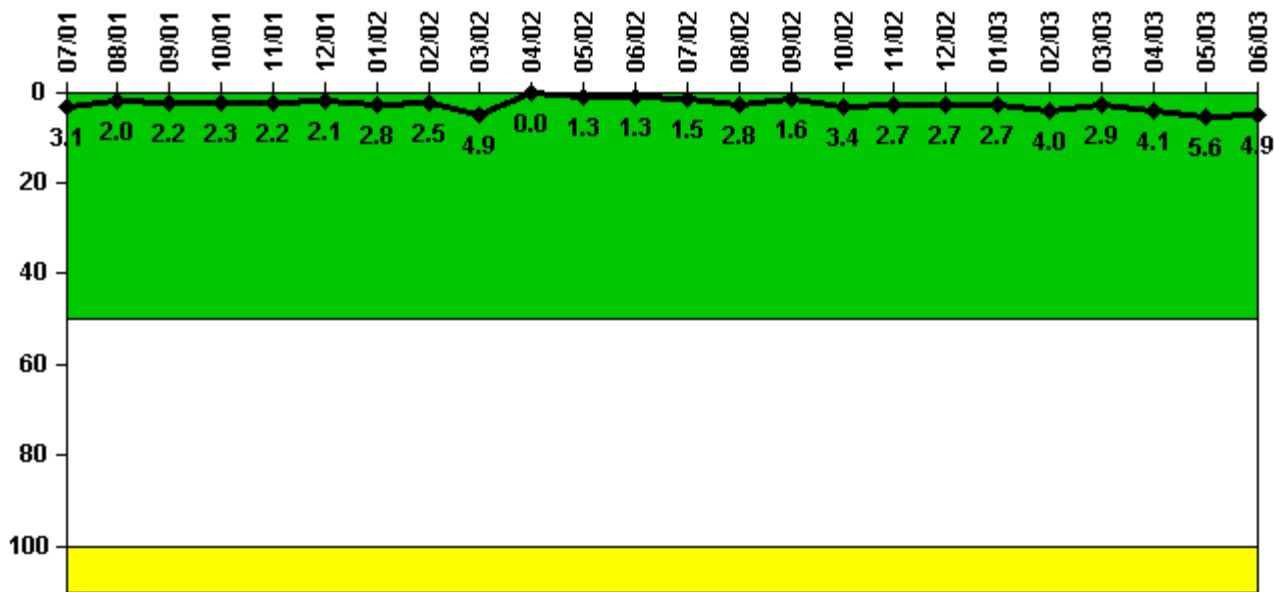
Notes

Reactor Coolant System Activity	7/01	8/01	9/01	10/01	11/01	12/01	1/02	2/02	3/02	4/02	5/02	6/02
Maximum activity	0.003600	0.004100	0.003800	0.004400	0.004900	0.005100	0.004800	0.005100	0.005300	0.000900	0.001900	0.002000
Technical specification limit	1.0	1.0	1.0	1.0	1.0	1.0	1.0	1.0	1.0	1.0	1.0	1.0
Indicator value	0.4	0.4	0.4	0.4	0.5	0.5	0.5	0.5	0.5	0.1	0.2	0.2

Reactor Coolant System Activity	7/02	8/02	9/02	10/02	11/02	12/02	1/03	2/03	3/03	4/03	5/03	6/03
Maximum activity	0.002100	0.002400	0.004400	0.003100	0.003000	0.003400	0.003700	0.004100	0.004200	0.004000	0.004500	0.004400
Technical specification limit	1.0	1.0	1.0	1.0	1.0	1.0	1.0	1.0	1.0	1.0	1.0	1.0
Indicator value	0.2	0.2	0.4	0.3	0.3	0.3	0.4	0.4	0.4	0.4	0.5	0.4

Licensee Comments: none

Reactor Coolant System Leakage



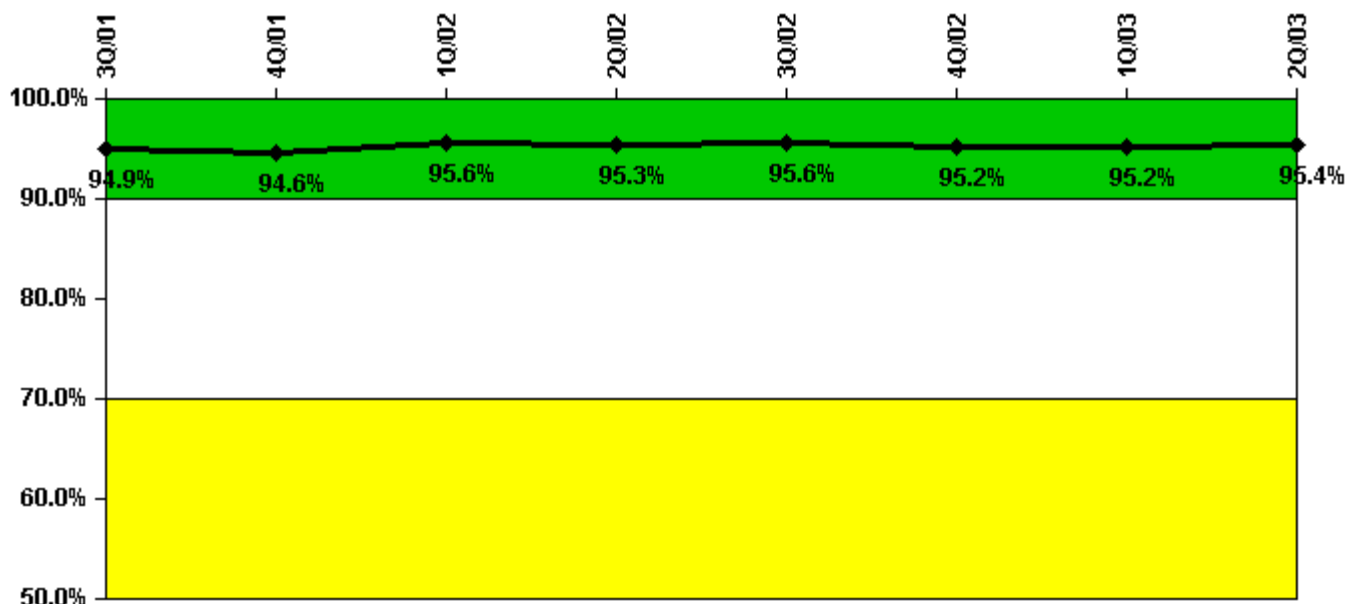
Thresholds: White > 50.0 Yellow > 100.0

Notes

Reactor Coolant System Leakage	7/01	8/01	9/01	10/01	11/01	12/01	1/02	2/02	3/02	4/02	5/02	6/02
Maximum leakage	0.310	0.200	0.220	0.230	0.220	0.210	0.280	0.250	0.490	0	0.130	0.130
Technical specification limit	10.0	10.0	10.0	10.0	10.0	10.0	10.0	10.0	10.0	10.0	10.0	10.0
Indicator value	3.1	2.0	2.2	2.3	2.2	2.1	2.8	2.5	4.9	0	1.3	1.3
Reactor Coolant System Leakage	7/02	8/02	9/02	10/02	11/02	12/02	1/03	2/03	3/03	4/03	5/03	6/03
Maximum leakage	0.150	0.280	0.160	0.340	0.270	0.270	0.270	0.400	0.290	0.410	0.560	0.490
Technical specification limit	10.0	10.0	10.0	10.0	10.0	10.0	10.0	10.0	10.0	10.0	10.0	10.0
Indicator value	1.5	2.8	1.6	3.4	2.7	2.7	2.7	4.0	2.9	4.1	5.6	4.9

Licensee Comments: none

Drill/Exercise Performance



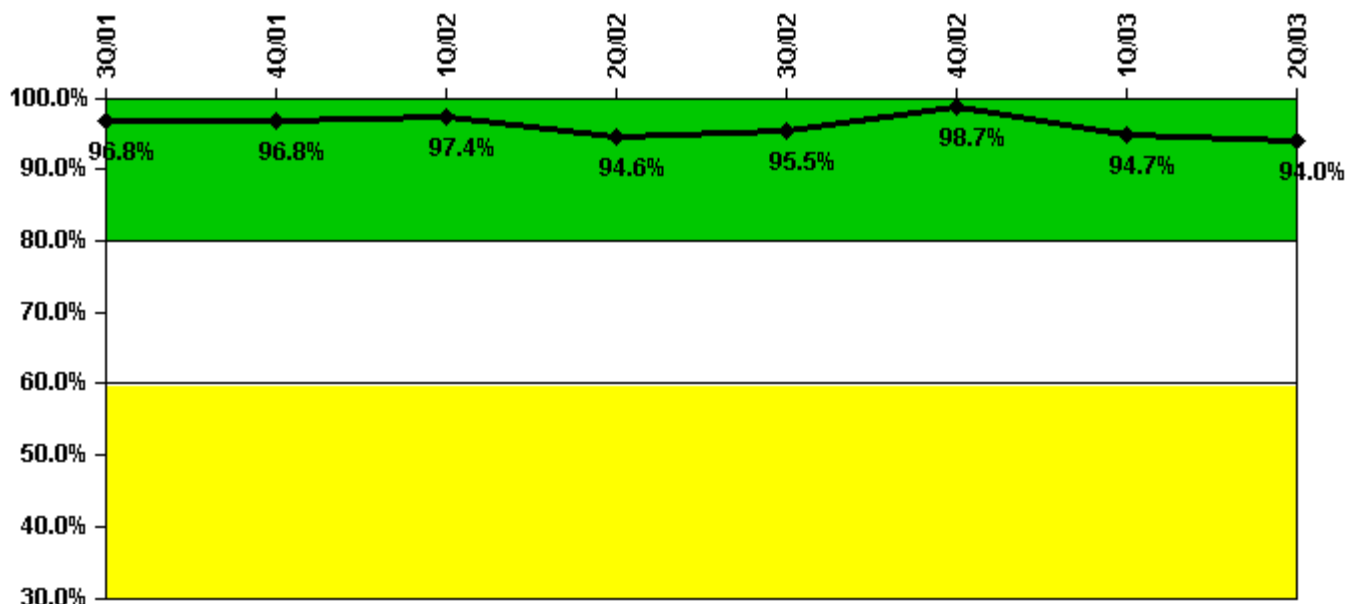
Thresholds: White < 90.0% Yellow < 70.0%

Notes

Drill/Exercise Performance	3Q/01	4Q/01	1Q/02	2Q/02	3Q/02	4Q/02	1Q/03	2Q/03
Successful opportunities	48.0	9.0	12.0	32.0	55.0	16.0	22.0	13.0
Total opportunities	52.0	10.0	12.0	34.0	56.0	17.0	22.0	14.0
Indicator value	94.9%	94.6%	95.6%	95.3%	95.6%	95.2%	95.2%	95.4%

Licensee Comments: none

ERO Drill Participation



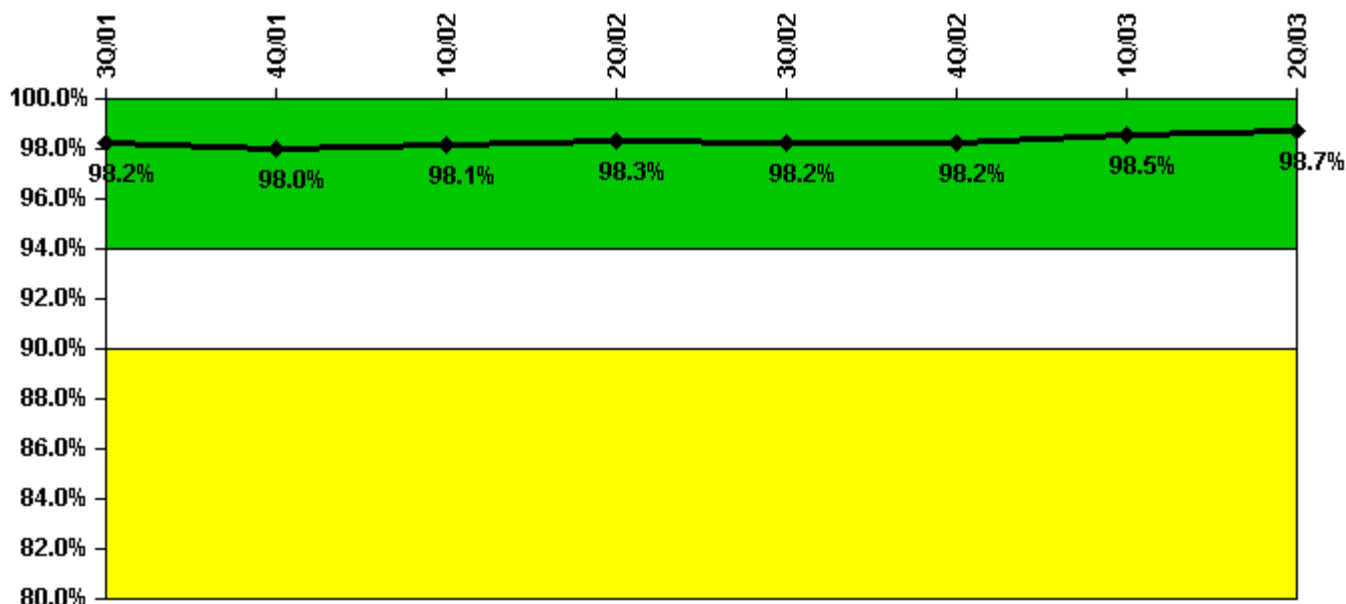
Thresholds: White < 80.0% Yellow < 60.0%

Notes

ERO Drill Participation	3Q/01	4Q/01	1Q/02	2Q/02	3Q/02	4Q/02	1Q/03	2Q/03
Participating Key personnel	150.0	150.0	149.0	141.0	149.0	151.0	142.0	141.0
Total Key personnel	155.0	155.0	153.0	149.0	156.0	153.0	150.0	150.0
Indicator value	96.8%	96.8%	97.4%	94.6%	95.5%	98.7%	94.7%	94.0%

Licensee Comments: none

Alert & Notification System



Thresholds: White < 94.0% Yellow < 90.0%

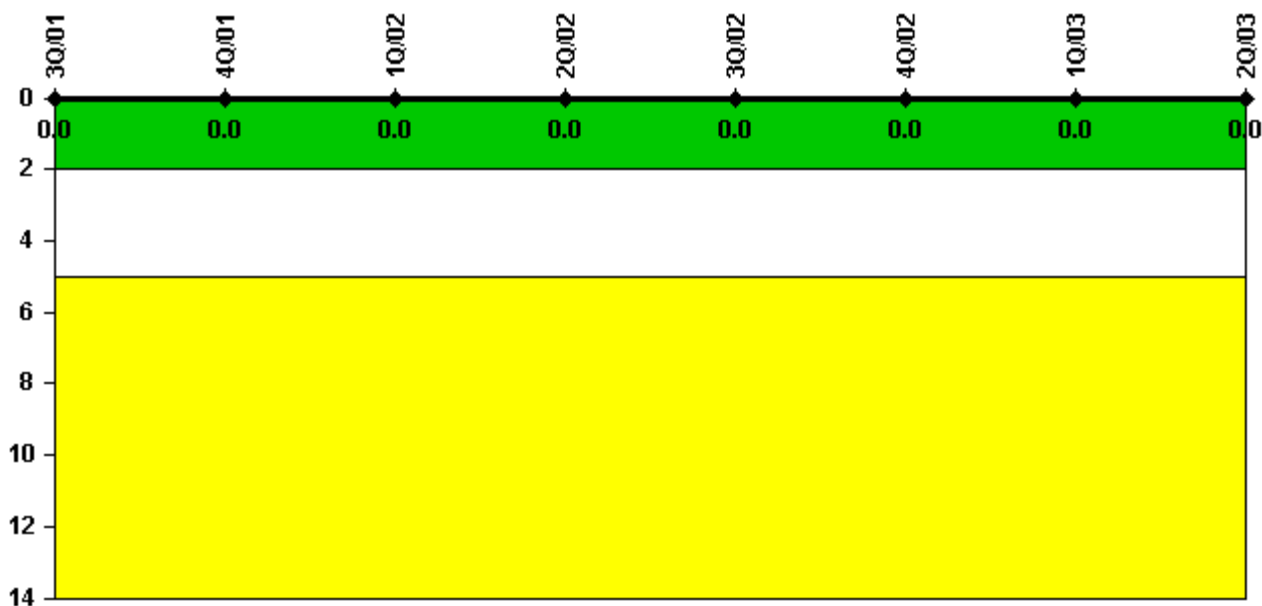
Notes

Alert & Notification System	3Q/01	4Q/01	1Q/02	2Q/02	3Q/02	4Q/02	1Q/03	2Q/03
Successful siren-tests	1084	1154	1031	1092	1092	1142	1291	1481
Total sirens-tests	1108	1172	1046	1111	1121	1157	1300	1495
Indicator value	98.2%	98.0%	98.1%	98.3%	98.2%	98.2%	98.5%	98.7%

Licensee Comments:

1Q/03: The 2/2003 data was revised to correct an error. There were no threshold changes.

Occupational Exposure Control Effectiveness



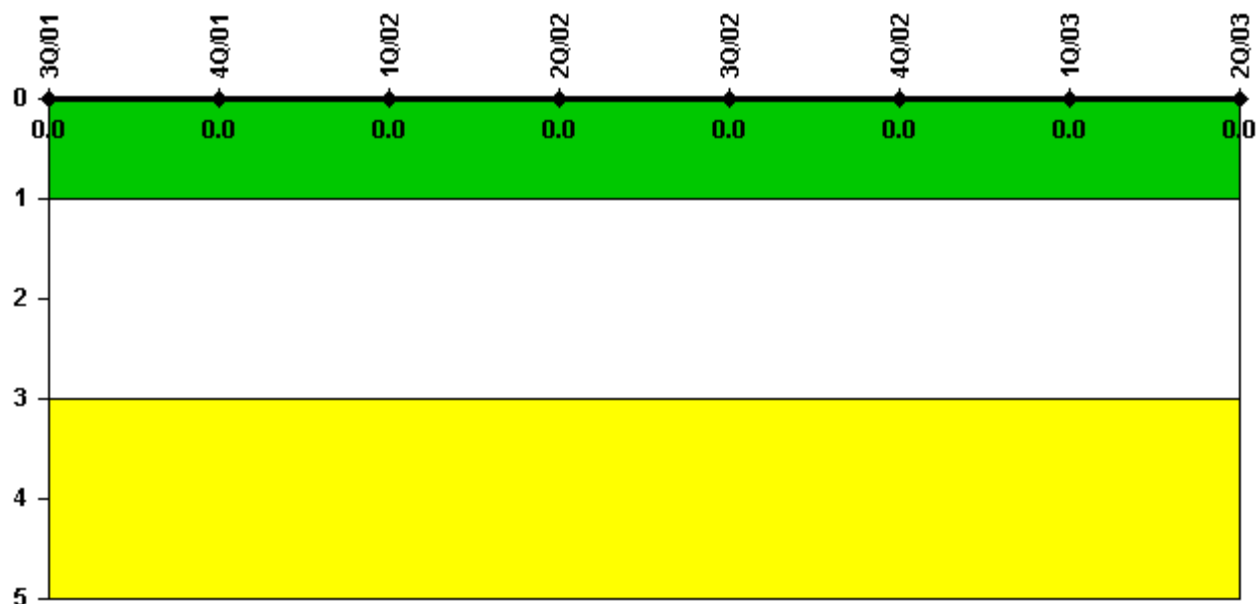
Thresholds: White > 2.0 Yellow > 5.0

Notes

Occupational Exposure Control Effectiveness	3Q/01	4Q/01	1Q/02	2Q/02	3Q/02	4Q/02	1Q/03	2Q/03
High radiation area occurrences	0	0	0	0	0	0	0	0
Very high radiation area occurrences	0	0	0	0	0	0	0	0
Unintended exposure occurrences	0	0	0	0	0	0	0	0
Indicator value	0	0	0	0	0	0	0	0

Licensee Comments: none

RETS/ODCM Radiological Effluent



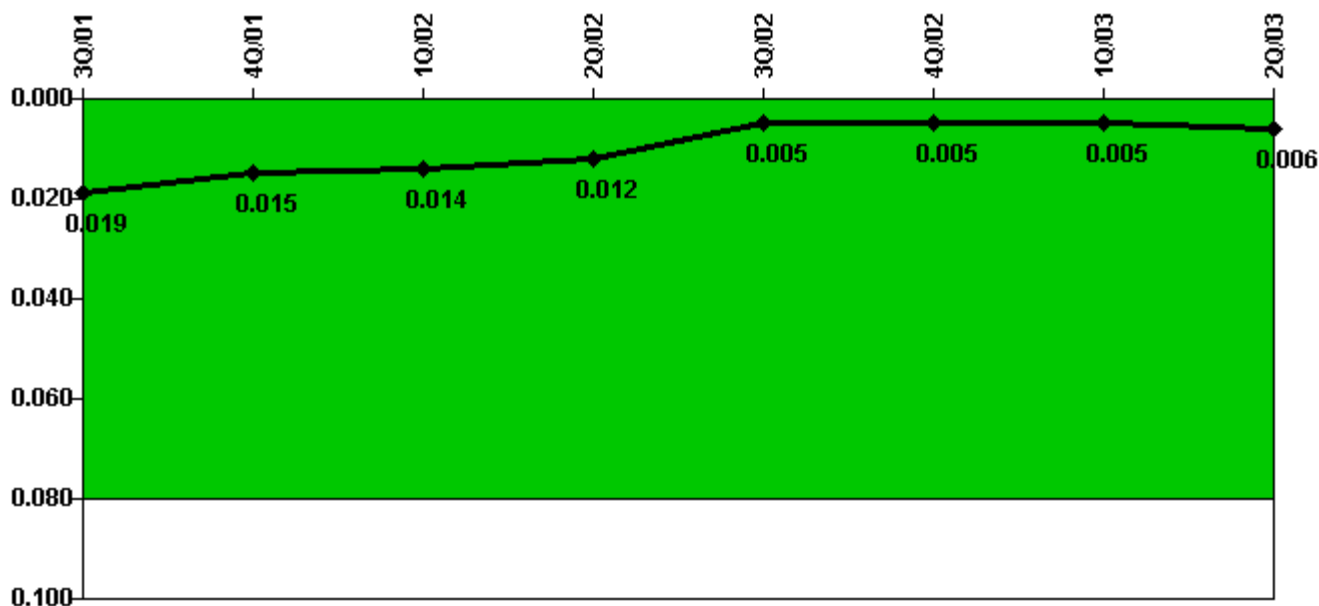
Thresholds: White > 1.0 Yellow > 3.0

Notes

RETS/ODCM Radiological Effluent	3Q/01	4Q/01	1Q/02	2Q/02	3Q/02	4Q/02	1Q/03	2Q/03
RETS/ODCM occurrences	0	0	0	0	0	0	0	0
Indicator value	0	0	0	0	0	0	0	0

Licensee Comments: none

Protected Area Security Performance Index



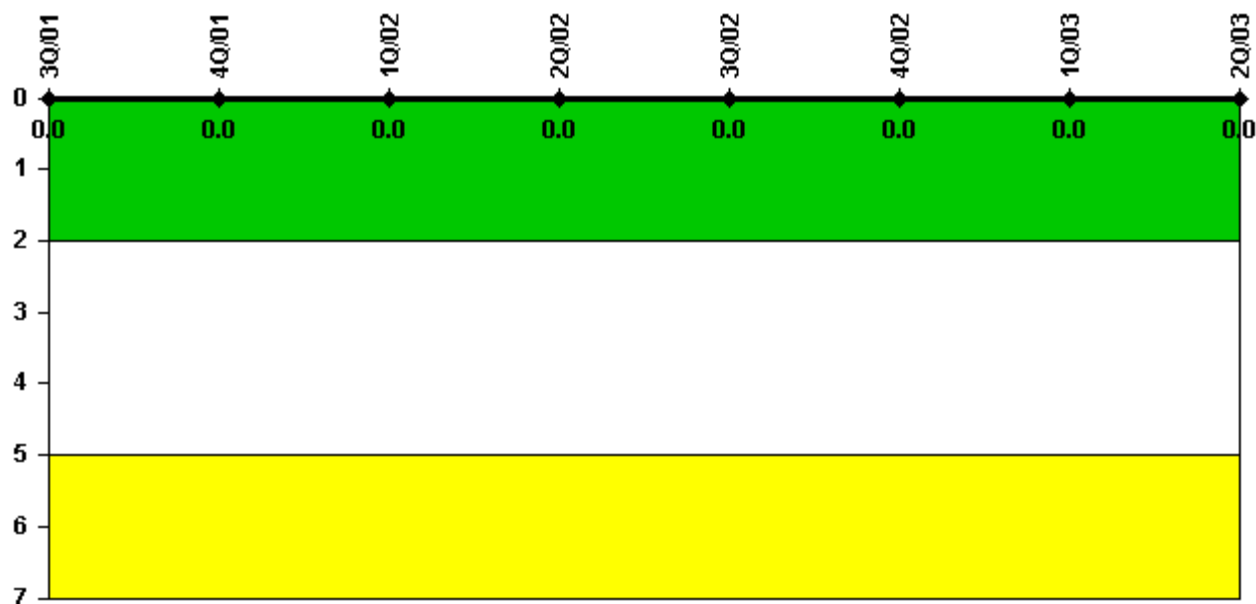
Thresholds: White > 0.080

Notes

Protected Area Security Performance Index	3Q/01	4Q/01	1Q/02	2Q/02	3Q/02	4Q/02	1Q/03	2Q/03
IDS compensatory hours	457.00	30.00	26.00	47.00	96.00	31.00	20.00	54.00
CCTV compensatory hours	11.0	0	0	0	9.0	6.0	3.0	12.0
IDS normalization factor	2.80	2.80	2.80	2.80	2.80	2.80	2.80	2.80
CCTV normalization factor	1.0	1.0	1.0	1.0	1.0	1.0	1.0	1.0
Index Value	0.019	0.015	0.014	0.012	0.005	0.005	0.005	0.006

Licensee Comments: none

Personnel Screening Program



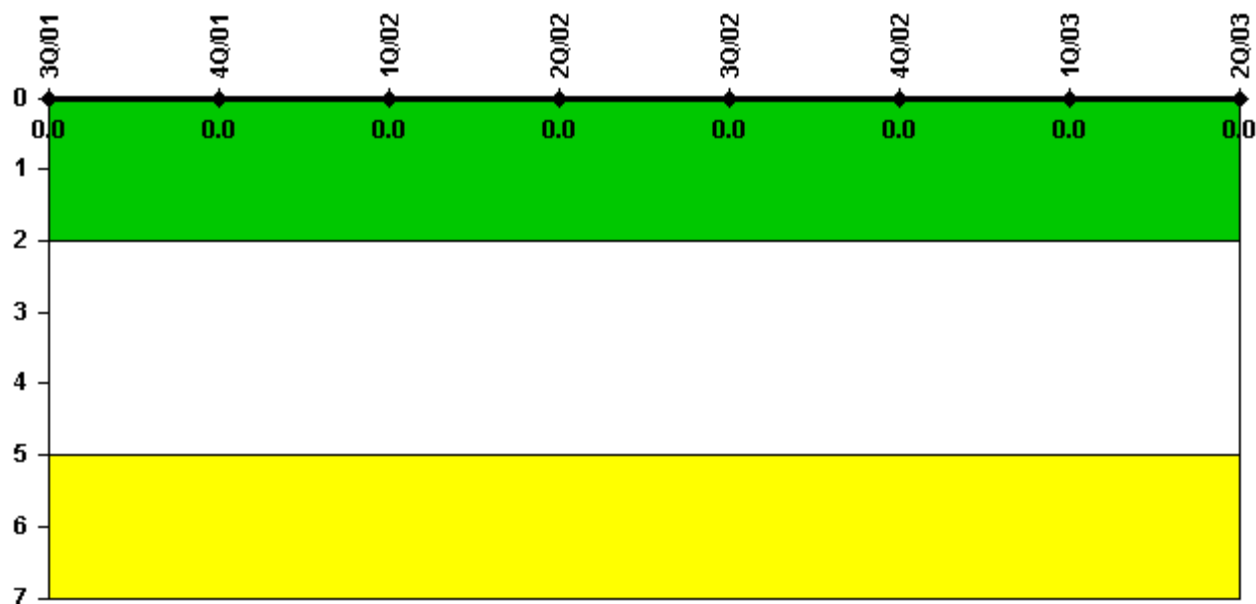
Thresholds: White > 2.0 Yellow > 5.0

Notes

Personnel Screening Program	3Q/01	4Q/01	1Q/02	2Q/02	3Q/02	4Q/02	1Q/03	2Q/03
Program failures	0	0	0	0	0	0	0	0
Indicator value	0	0	0	0	0	0	0	0

Licensee Comments: none

FFD/Personnel Reliability



Thresholds: White > 2.0 Yellow > 5.0

Notes

FFD/Personnel Reliability	3Q/01	4Q/01	1Q/02	2Q/02	3Q/02	4Q/02	1Q/03	2Q/03
Program Failures	0	0	0	0	0	0	0	0
Indicator value	0	0	0	0	0	0	0	0

Licensee Comments: none

▲ [PI Summary](#) | [Inspection Findings Summary](#) | [Reactor Oversight Process](#)

Last Modified: July 22, 2003