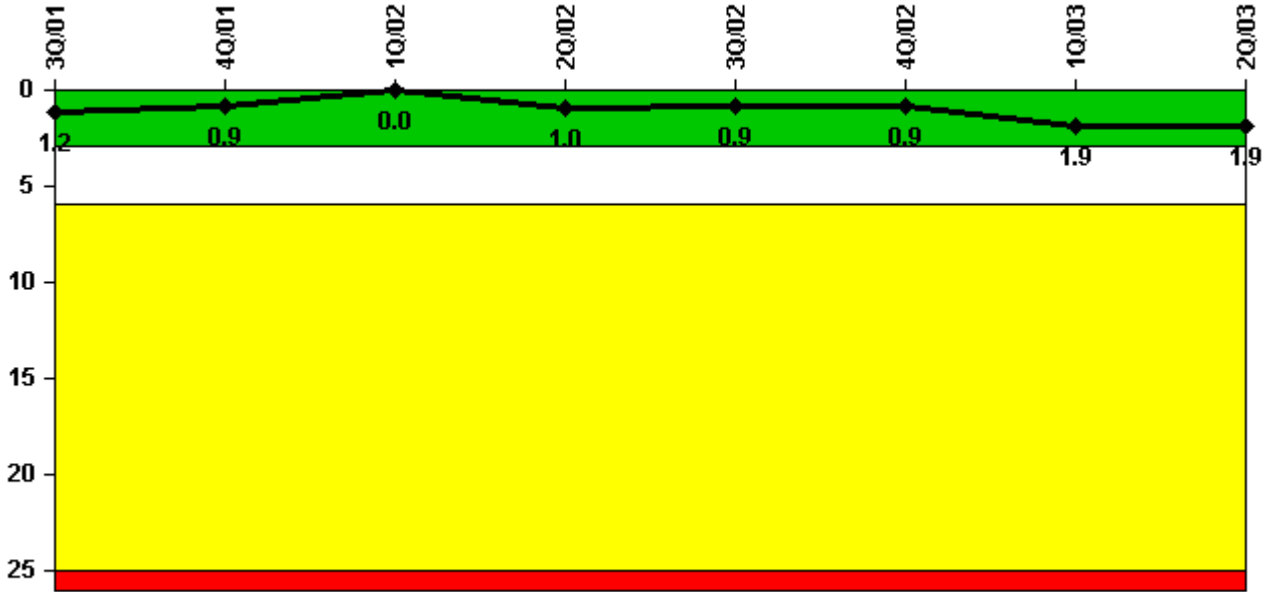


## D.C. Cook 1

### 2Q/2003 Performance Indicators

Licensee's General Comments: none

#### Unplanned Scrams per 7000 Critical Hrs



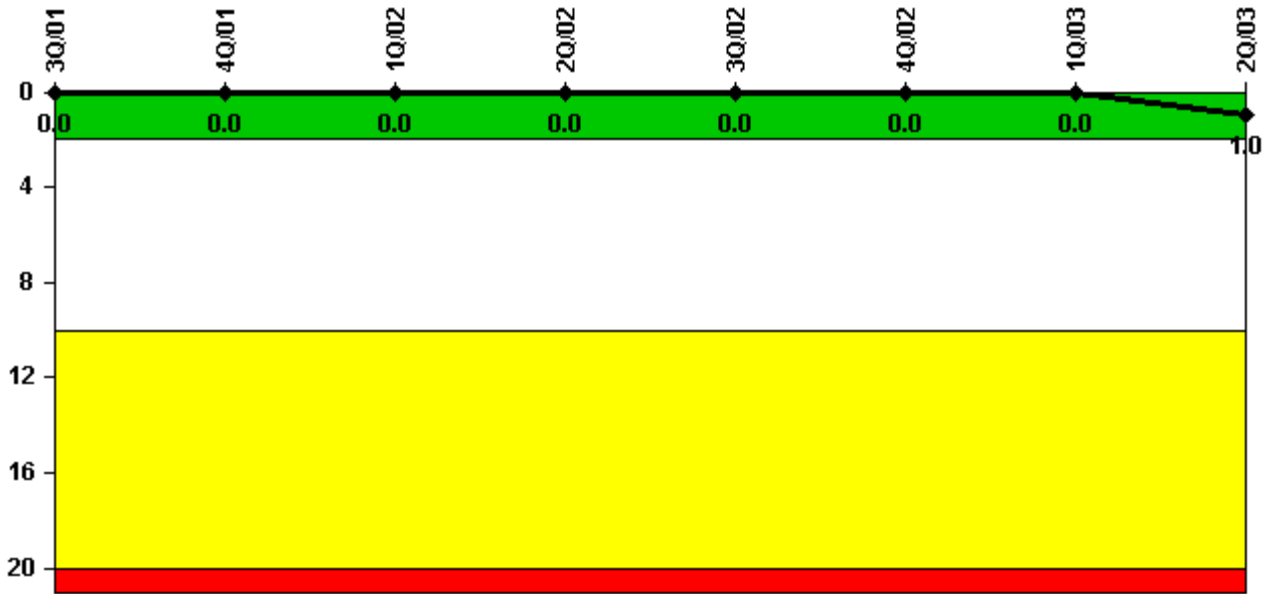
**Thresholds: White > 3.0 Yellow > 6.0 Red > 25.0**

#### Notes

Unplanned Scrams per 7000 Critical Hrs	3Q/01	4Q/01	1Q/02	2Q/02	3Q/02	4Q/02	1Q/03	2Q/03
Unplanned scrams	0	0	0	1.0	0	0	1.0	1.0
Critical hours	1432.0	2209.0	2160.0	1251.0	2208.0	2209.0	1695.2	1370.7
Indicator value	1.2	0.9	0	1.0	0.9	0.9	1.9	1.9

Licensee Comments: none

### Scrams with Loss of Normal Heat Removal



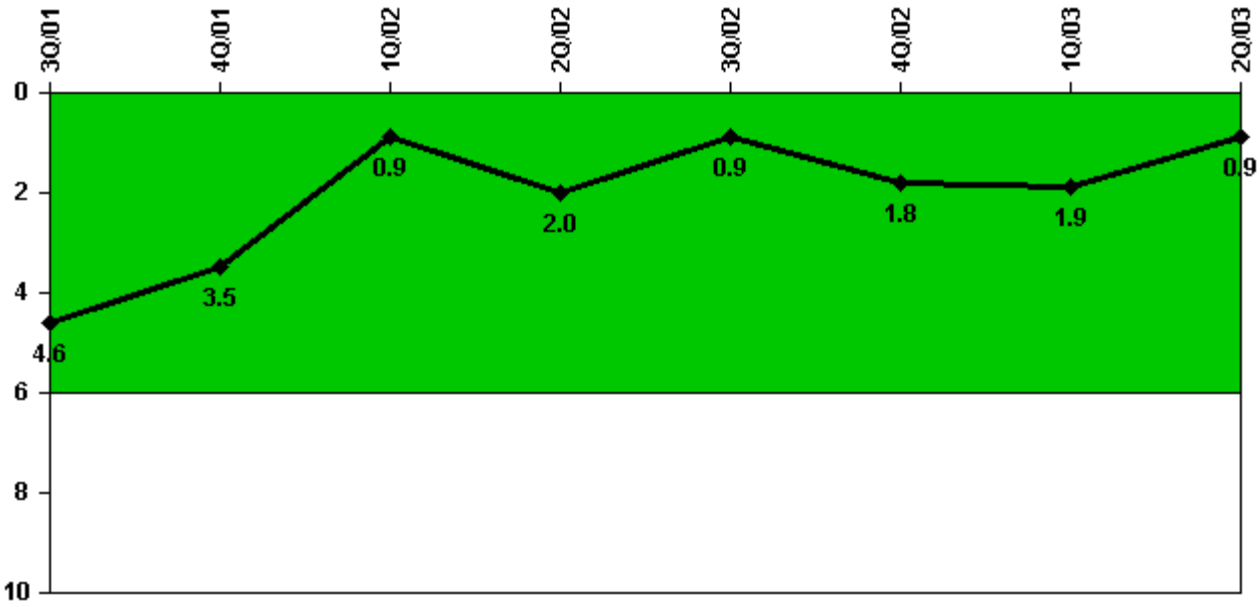
Thresholds: White > 2.0 Yellow > 10.0 Red > 20.0

#### Notes

Scrams with Loss of Normal Heat Removal	3Q/01	4Q/01	1Q/02	2Q/02	3Q/02	4Q/02	1Q/03	2Q/03
Scrams	0	0	0	0	0	0	0	1.0
Indicator value	0	0	0	0	0	0	0	1.0

Licensee Comments: none

### Unplanned Power Changes per 7000 Critical Hrs



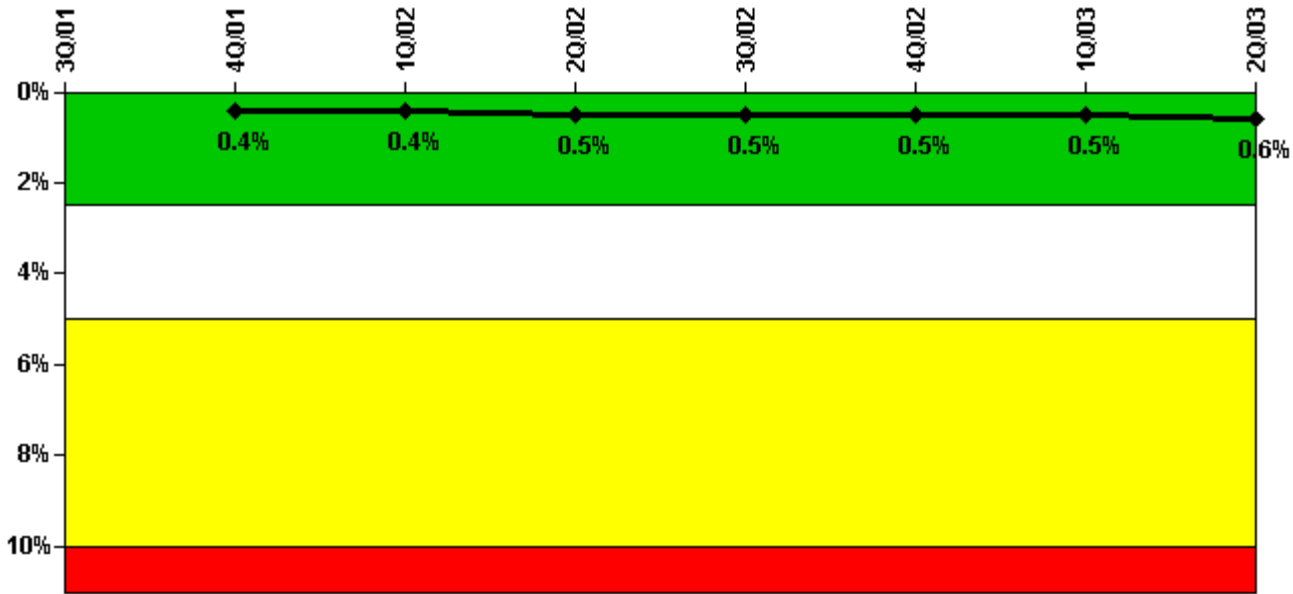
Thresholds: White > 6.0

#### Notes

Unplanned Power Changes per 7000 Critical Hrs	3Q/01	4Q/01	1Q/02	2Q/02	3Q/02	4Q/02	1Q/03	2Q/03
Unplanned power changes	1.0	0	0	1.0	0	1.0	0	0
Critical hours	1432.0	2209.0	2160.0	1251.0	2208.0	2209.0	1695.2	1370.7
Indicator value	4.6	3.5	0.9	2.0	0.9	1.8	1.9	0.9

Licensee Comments: none

### Safety System Unavailability, Emergency AC Power



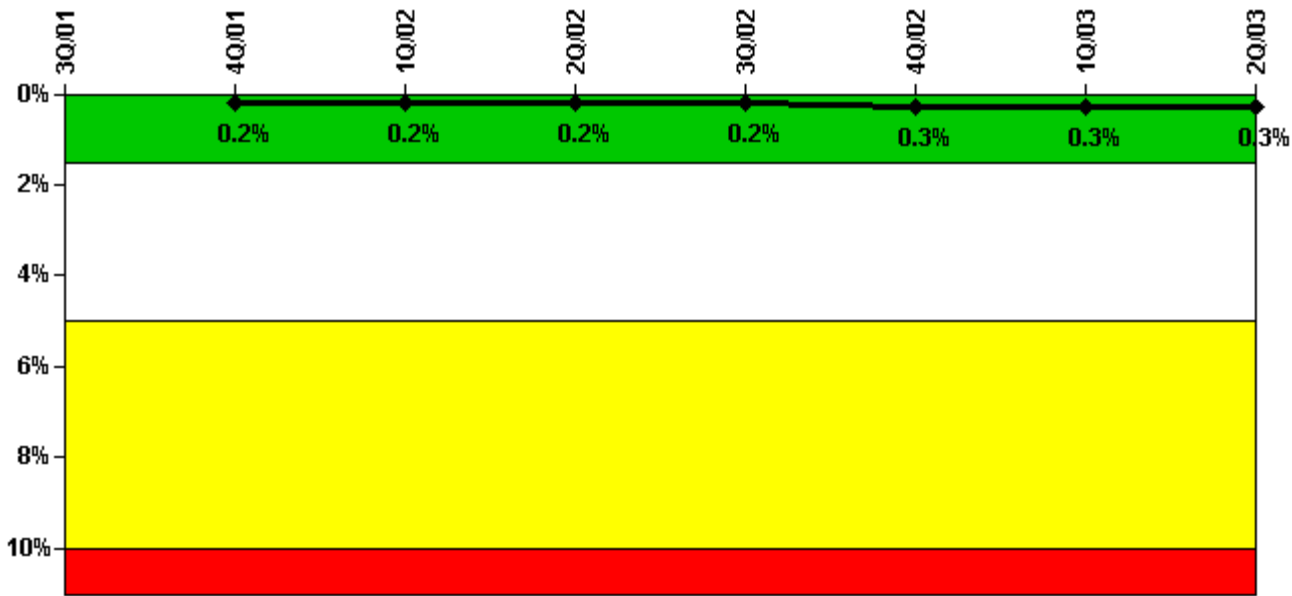
Thresholds: White > 2.5% Yellow > 5.0% Red > 10.0%

#### Notes

Safety System Unavailability, Emergency AC Power	3Q/01	4Q/01	1Q/02	2Q/02	3Q/02	4Q/02	1Q/03	2Q/03
<b>Train 1</b>								
Planned unavailable hours	22.42	33.85	15.90	2.20	1.50	18.10	16.14	0.42
Unplanned unavailable hours	1.75	0	0	25.90	0	0	0	0
Fault exposure hours	0	0	0	1.00	0	0	0	0
Effective Reset hours	0	0	0	0	0	0	0	0
Required hours	2208.00	2209.00	2160.00	1531.15	2208.00	2209.00	2160.00	1585.00
<b>Train 2</b>								
Planned unavailable hours	0.35	25.70	14.55	5.60	0.55	17.90	20.23	44.83
Unplanned unavailable hours	0	0	0	0	0	0	0	0
Fault exposure hours	0	0	0	0	0	0	0	0
Effective Reset hours	0	0	0	0	0	0	0	0
Required hours	1526.12	2209.00	2160.00	1431.65	2208.00	2209.00	2160.00	2183.00
Indicator value		0.4%	0.4%	0.5%	0.5%	0.5%	0.5%	0.6%

Licensee Comments: none

### Safety System Unavailability, High Pressure Injection System (HPSI)



Thresholds: White > 1.5% Yellow > 5.0% Red > 10.0%

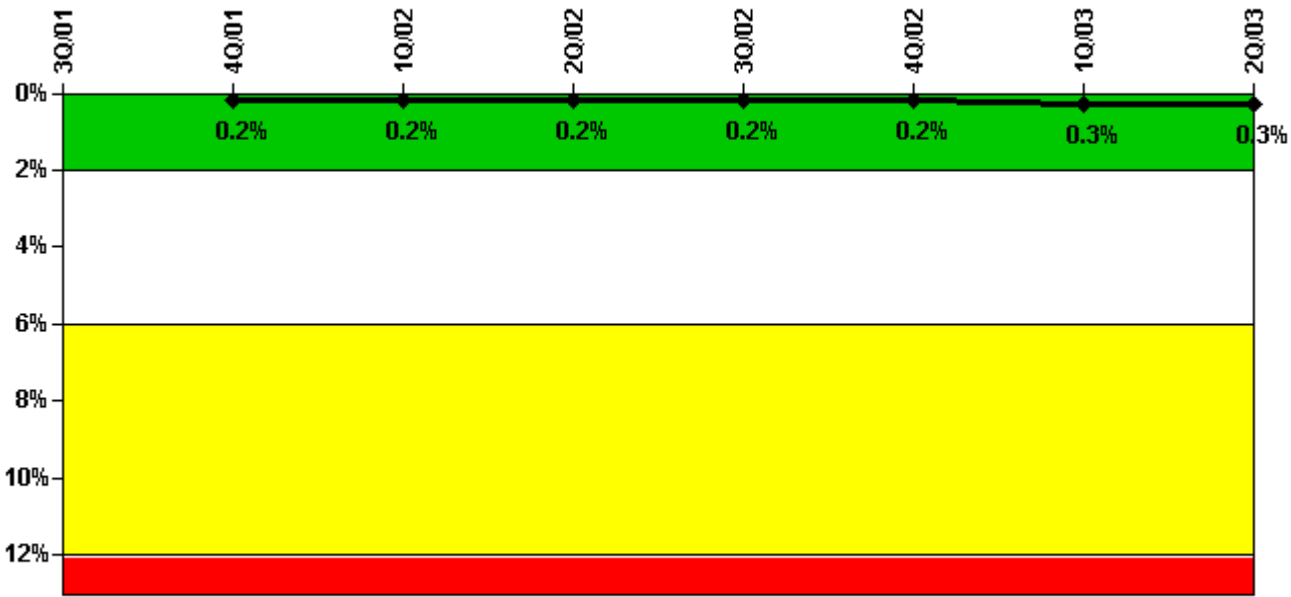
**Notes**

Safety System Unavailability, High Pressure Injection System (HPSI)	3Q/01	4Q/01	1Q/02	2Q/02	3Q/02	4Q/02	1Q/03	2Q/03
<b>Train 1</b>								
Planned unavailable hours	10.12	14.07	0	5.58	0	49.10	11.17	0
Unplanned unavailable hours	25.95	0	0	0	2.82	0	0	0
Fault exposure hours	0	0	0	0	0	0	0	0
Effective Reset hours	0	0	0	0	0	0	0	0
Required hours	1512.36	2209.00	2160.00	1431.56	2208.00	2209.00	1804.95	1433.97
<b>Train 2</b>								
Planned unavailable hours	0	0	0	8.82	0	6.22	1.75	10.00
Unplanned unavailable hours	0	0	0	0	0	0	0	0
Fault exposure hours	0	0	0	0	0	0	0	0
Effective Reset hours	0	0	0	0	0	0	0	0
Required hours	1507.20	2209.00	2160.00	1386.43	2208.00	2209.00	1866.13	1499.10
<b>Train 3</b>								
Planned unavailable hours	0	0	0	9.33	7.00	0	0	0
Unplanned unavailable hours	0	0	0	0	0	2.92	0	0
Fault exposure hours	0	0	0	0	0	0	0	0
Effective Reset hours	0	0	0	0	0	0	0	0
Required hours	1512.36	2209.00	2160.00	1386.43	2208.00	2209.00	1804.95	1433.97
<b>Train 4</b>								
Planned unavailable hours	0.53	0	11.75	3.78	0	0	6.75	0
Unplanned unavailable hours	0	0	0	0	0	0	0	0
Fault exposure hours	0	0	0	0	0	0	0	0
Effective Reset hours	0	0	0	0	0	0	0	0

Required hours	1507.20	2209.00	2160.00	1386.43	2208.00	2209.00	1804.95	1419.20
Indicator value		0.2%	0.2%	0.2%	0.2%	0.3%	0.3%	0.3%

Licensee Comments: none

### Safety System Unavailability, Heat Removal System (AFW)



Thresholds: White > 2.0% Yellow > 6.0% Red > 12.0%

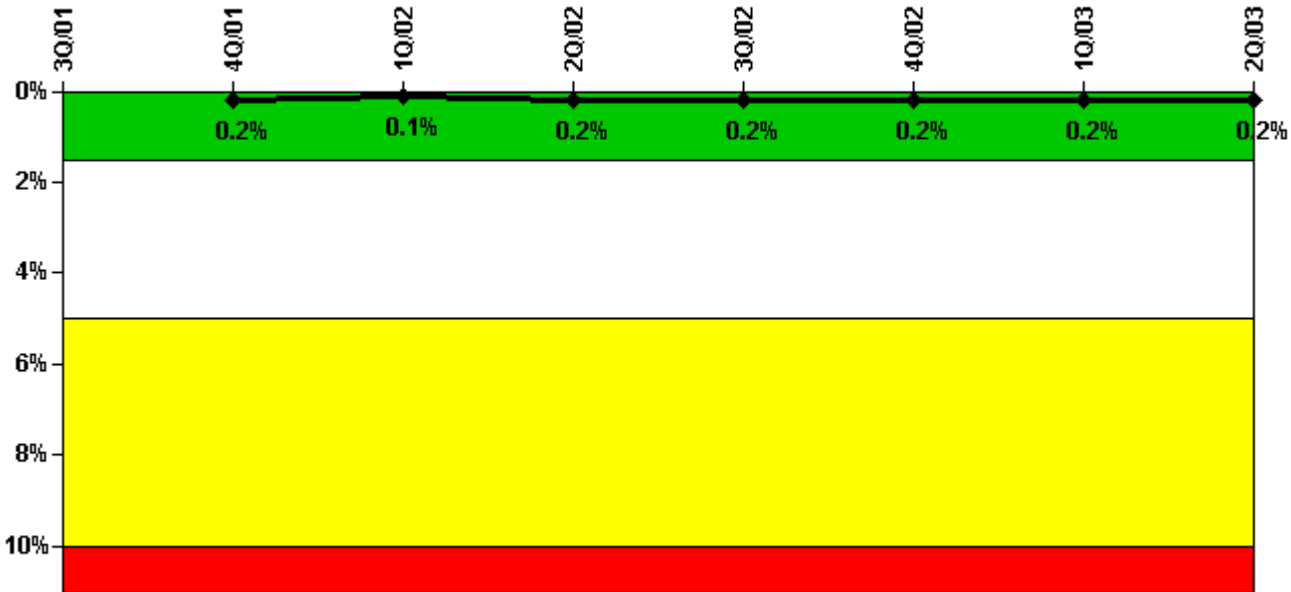
### Notes

Safety System Unavailability, Heat Removal System (AFW)	3Q/01	4Q/01	1Q/02	2Q/02	3Q/02	4Q/02	1Q/03	2Q/03
<b>Train 1</b>								
Planned unavailable hours	1.80	6.98	0	0	0	2.67	0	19.15
Unplanned unavailable hours	0	0	0	0	0	0	0	0
Fault exposure hours	0	0	0	0	0	0	0	0
Effective Reset hours	0	0	0	0	0	0	0	0
Required hours	1507.55	2209.00	2160.00	1357.71	2208.00	2209.00	1804.95	1419.20
<b>Train 2</b>								
Planned unavailable hours	7.94	0	5.95	6.55	10.18	0	9.63	0
Unplanned unavailable hours	0	0	0	0	0	0	0	0
Fault exposure hours	0	0	0	0	0	0	0	0
Effective Reset hours	0	0	0	0	0	0	0	0
Required hours	1507.55	2209.00	2160.00	1357.70	2208.00	2209.00	1804.95	1419.20
<b>Train 3</b>								

Planned unavailable hours	0.70	0	3.08	8.88	12.75	0	13.12	0
Unplanned unavailable hours	5.97	1.25	0	0	0	0	13.03	0
Fault exposure hours	0	0	0	0	0	0	0	0
Effective Reset hours	0	0	0	0	0	0	0	0
Required hours	1507.55	2209.00	2160.00	1357.70	2208.00	2209.00	1804.95	1419.20
Indicator value		0.2%	0.2%	0.2%	0.2%	0.2%	0.3%	0.3%

Licensee Comments: none

### Safety System Unavailability, Residual Heat Removal System



Thresholds: White > 1.5% Yellow > 5.0% Red > 10.0%

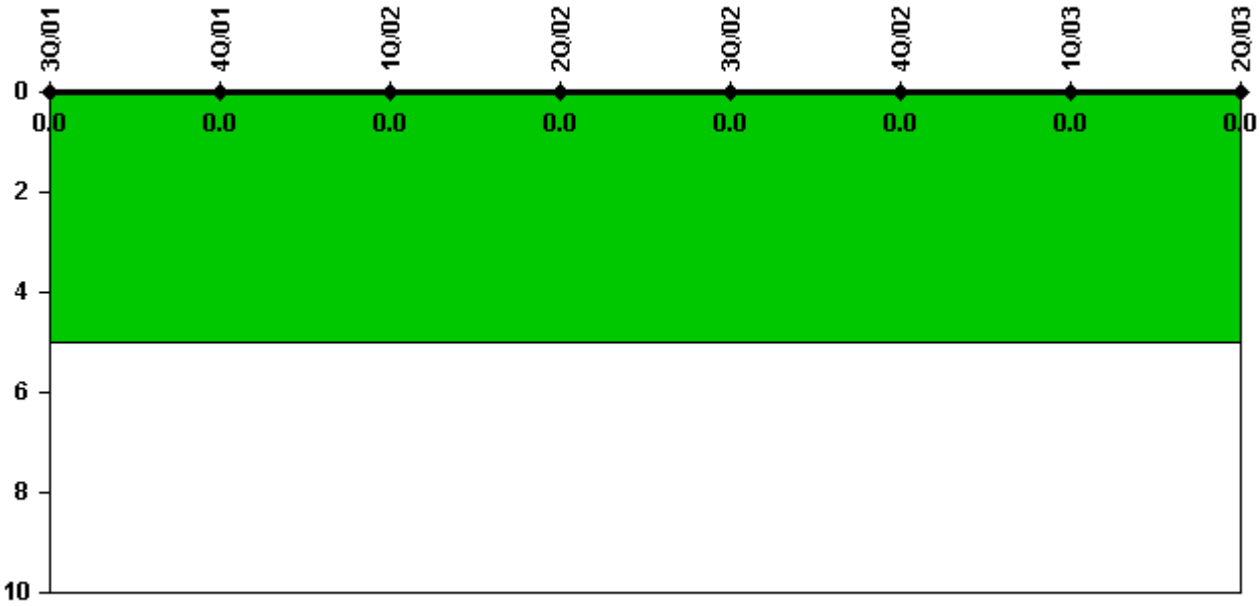
### Notes

Safety System Unavailability, Residual Heat Removal System	3Q/01	4Q/01	1Q/02	2Q/02	3Q/02	4Q/02	1Q/03	2Q/03
<b>Train 1</b>								
Planned unavailable hours	0	9.72	0	11.98	7.42	0	0.75	0
Unplanned unavailable hours	0	0	0	0	0	0	0	0
Fault exposure hours	0	0	0	0	0	0	0	0
Effective Reset hours	0	0	0	0	0	0	0	0
Required hours	2208.00	2209.00	2160.00	1962.60	2208.00	2209.00	2160.00	2183.00
<b>Train 2</b>								
Planned unavailable hours	0	4.98	0	4.03	7.38	8.85	0	0
Unplanned unavailable hours	0	0	0	0	0	0	0	0

Fault exposure hours	0	0	0	0	0	0	0	0
Effective Reset hours	0	0	0	0	0	0	0	0
Required hours	2208.00	2209.00	2160.00	1962.60	2208.00	2209.00	2160.00	2183.00
Indicator value		0.2%	0.1%	0.2%	0.2%	0.2%	0.2%	0.2%

Licensee Comments: none

### Safety System Functional Failures (PWR)



Thresholds: White > 5.0

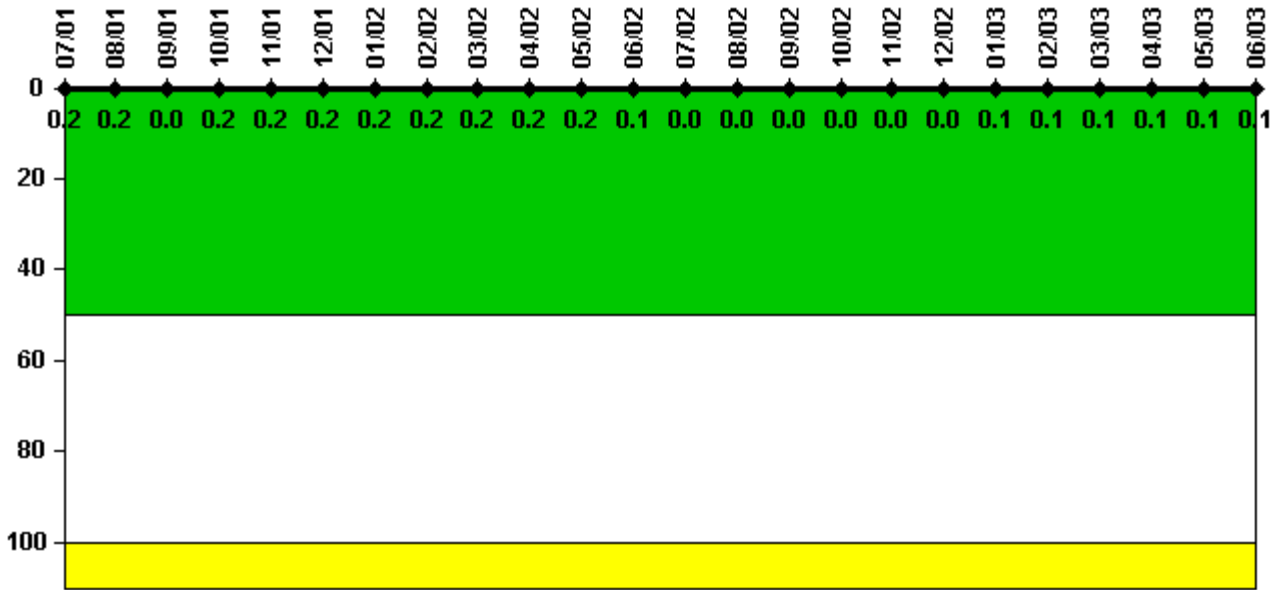
### Notes

Safety System Functional Failures (PWR)	3Q/01	4Q/01	1Q/02	2Q/02	3Q/02	4Q/02	1Q/03	2Q/03
Safety System Functional Failures	0	0	0	0	0	0	0	0
Indicator value	0	0	0	0	0	0	0	0

Licensee Comments: none



### Reactor Coolant System Activity



Thresholds: White > 50.0 Yellow > 100.0

#### Notes

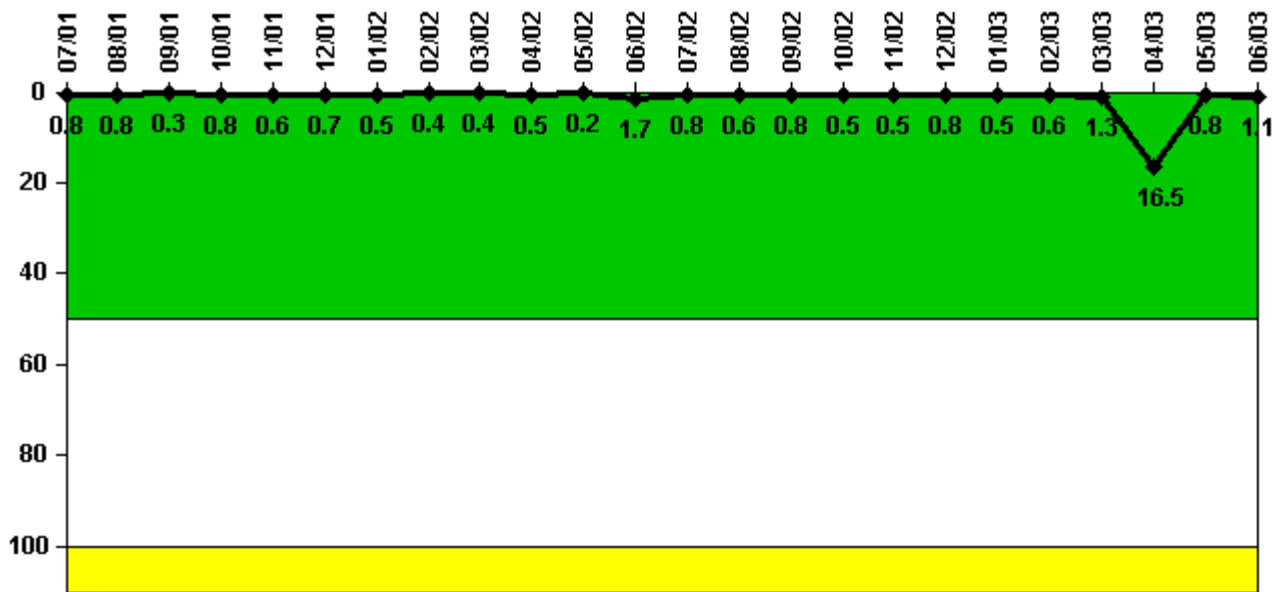
Reactor Coolant System Activity	7/01	8/01	9/01	10/01	11/01	12/01	1/02	2/02	3/02	4/02	5/02	6/02
Maximum activity	0.002050	0.001830	0.000006	0.002210	0.002040	0.002170	0.002390	0.002390	0.002260	0.002250	0.002390	0.000824
Technical specification limit	1.0	1.0	1.0	1.0	1.0	1.0	1.0	1.0	1.0	1.0	1.0	1.0
Indicator value	0.2	0.2	0	0.2	0.2	0.2	0.2	0.2	0.2	0.2	0.2	0.1

Reactor Coolant System Activity	7/02	8/02	9/02	10/02	11/02	12/02	1/03	2/03	3/03	4/03	5/03	6/03
Maximum activity	0.000447	0.000457	0.000457	0.000470	0.000498	0.000492	0.000506	0.000949	0.000898	0.000881	0.000546	0.000910
Technical specification limit	1.0	1.0	1.0	1.0	1.0	1.0	1.0	1.0	1.0	1.0	1.0	1.0
Indicator value	0	0	0	0	0	0	0.1	0.1	0.1	0.1	0.1	0.1

Licensee Comments: none

### Reactor Coolant System Leakage



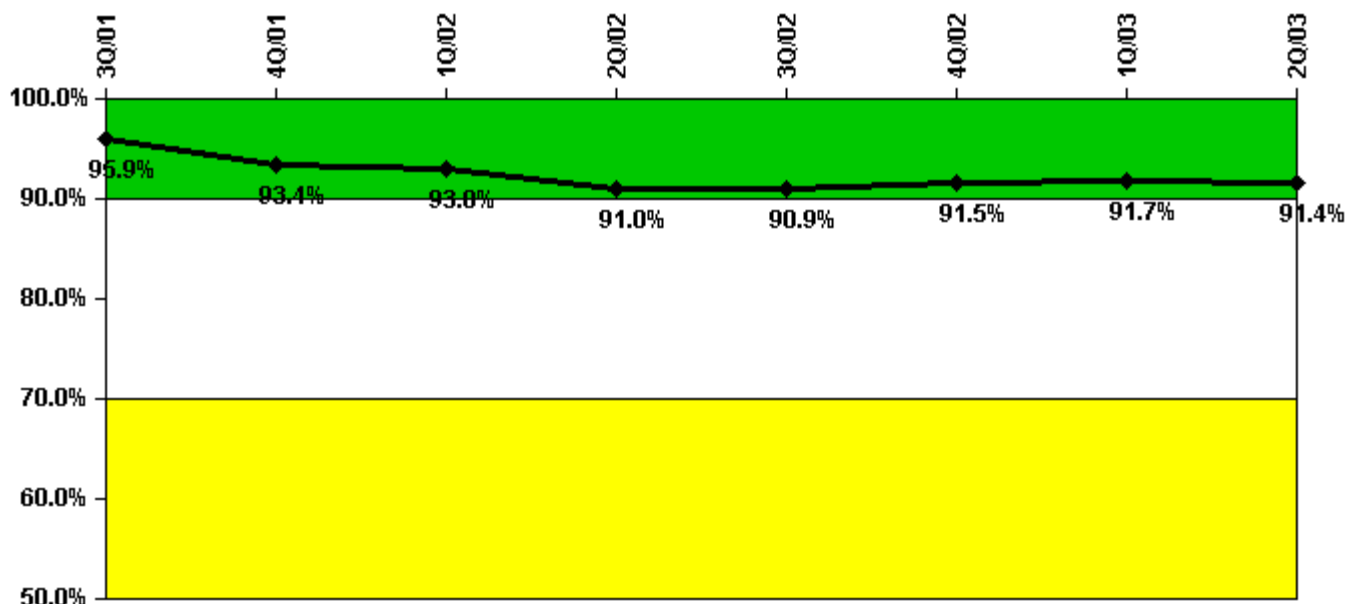
Thresholds: White > 50.0 Yellow > 100.0

**Notes**

Reactor Coolant System Leakage	7/01	8/01	9/01	10/01	11/01	12/01	1/02	2/02	3/02	4/02	5/02	6/02
Maximum leakage	0.090	0.090	0.030	0.090	0.066	0.077	0.050	0.040	0.042	0.050	0.020	0.188
Technical specification limit	11.0	11.0	11.0	11.0	11.0	11.0	11.0	11.0	11.0	11.0	11.0	11.0
Indicator value	0.8	0.8	0.3	0.8	0.6	0.7	0.5	0.4	0.4	0.5	0.2	1.7
Reactor Coolant System Leakage	7/02	8/02	9/02	10/02	11/02	12/02	1/03	2/03	3/03	4/03	5/03	6/03
Maximum leakage	0.085	0.063	0.090	0.050	0.060	0.090	0.050	0.069	0.148	1.820	0.091	0.120
Technical specification limit	11.0	11.0	11.0	11.0	11.0	11.0	11.0	11.0	11.0	11.0	11.0	11.0
Indicator value	0.8	0.6	0.8	0.5	0.5	0.8	0.5	0.6	1.3	16.5	0.8	1.1

Licensee Comments: none

### Drill/Exercise Performance



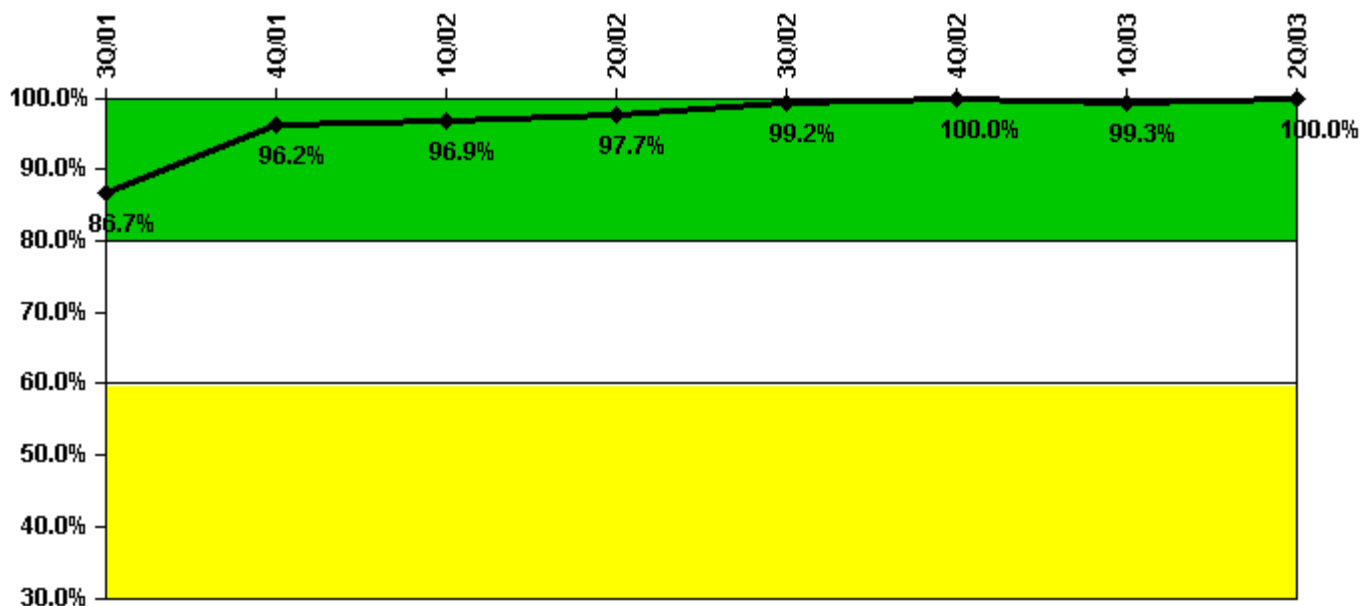
Thresholds: White < 90.0% Yellow < 70.0%

#### Notes

Drill/Exercise Performance	3Q/01	4Q/01	1Q/02	2Q/02	3Q/02	4Q/02	1Q/03	2Q/03
Successful opportunities	69.0	90.0	43.0	24.0	140.0	149.0	92.0	31.0
Total opportunities	76.0	104.0	46.0	34.0	150.0	159.0	95.0	34.0
Indicator value	95.9%	93.4%	93.0%	91.0%	90.9%	91.5%	91.7%	91.4%

Licensee Comments: none

### ERO Drill Participation



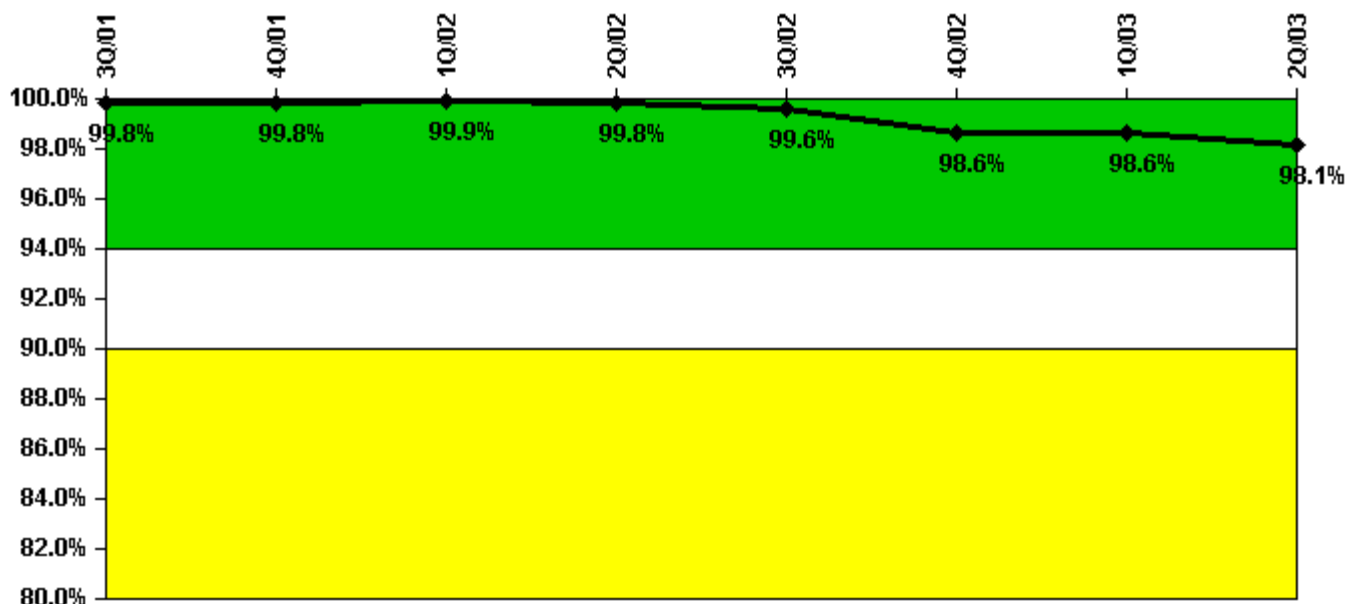
Thresholds: White < 80.0% Yellow < 60.0%

#### Notes

ERO Drill Participation	3Q/01	4Q/01	1Q/02	2Q/02	3Q/02	4Q/02	1Q/03	2Q/03
Participating Key personnel	111.0	125.0	127.0	125.0	130.0	131.0	151.0	144.0
Total Key personnel	128.0	130.0	131.0	128.0	131.0	131.0	152.0	144.0
Indicator value	86.7%	96.2%	96.9%	97.7%	99.2%	100.0%	99.3%	100.0%

Licensee Comments: none

### Alert & Notification System



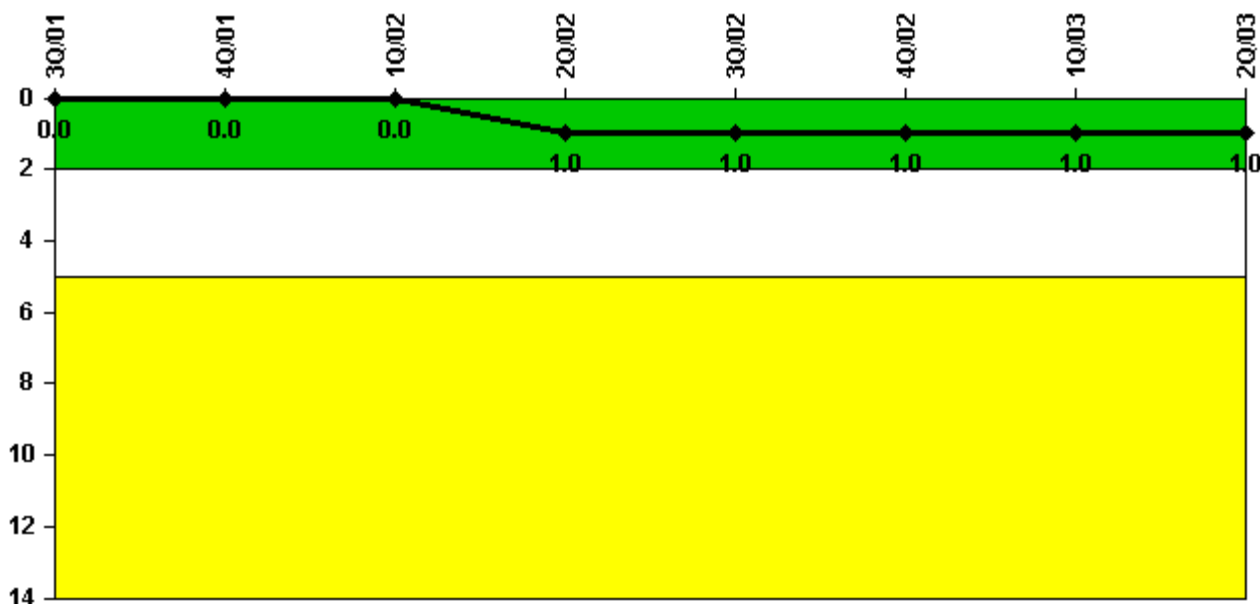
Thresholds: White < 94.0% Yellow < 90.0%

#### Notes

Alert & Notification System	3Q/01	4Q/01	1Q/02	2Q/02	3Q/02	4Q/02	1Q/03	2Q/03
Successful siren-tests	210	209	210	209	209	200	210	205
Total sirens-tests	210	210	210	210	210	210	210	210
Indicator value	99.8%	99.8%	99.9%	99.8%	99.6%	98.6%	98.6%	98.1%

Licensee Comments: none

### Occupational Exposure Control Effectiveness



Thresholds: White > 2.0 Yellow > 5.0

#### Notes

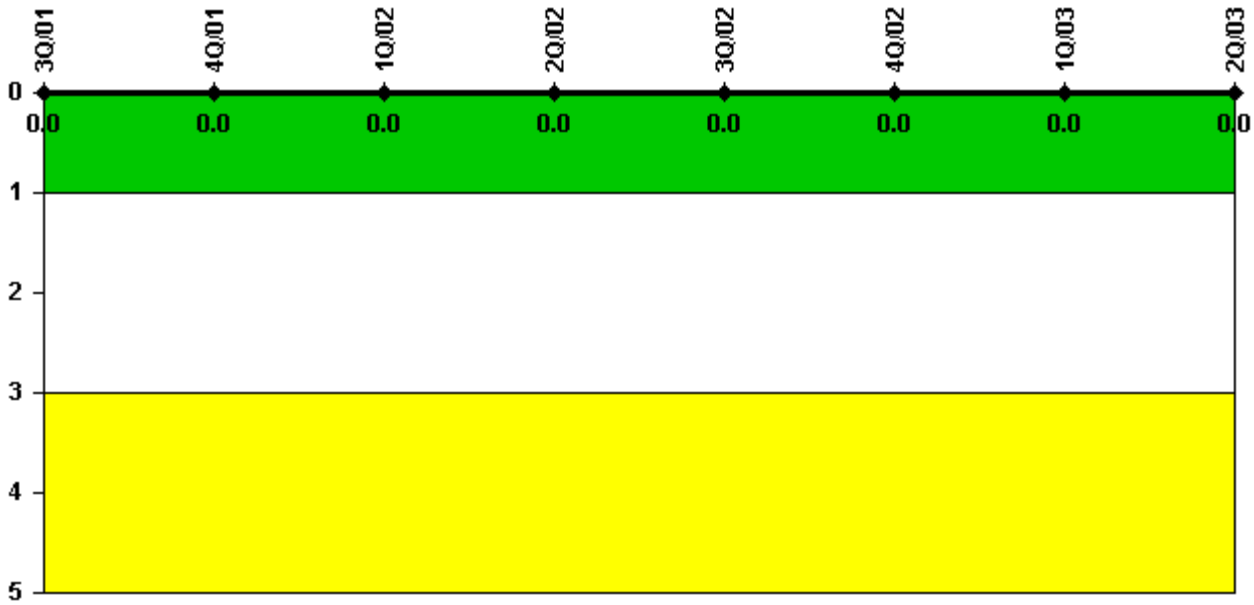
Occupational Exposure Control Effectiveness	3Q/01	4Q/01	1Q/02	2Q/02	3Q/02	4Q/02	1Q/03	2Q/03
High radiation area occurrences	0	0	0	1	0	0	0	0
Very high radiation area occurrences	0	0	0	0	0	0	0	0
Unintended exposure occurrences	0	0	0	0	0	0	0	1
Indicator value	0	0	0	1	1	1	1	1

Licensee Comments:

2Q/03: A Frequently Asked Question (FAQ) was previously submitted to seek clarification of an occurrence that had been previously counted against this indicator in the 2nd quarter of 2002. The FAQ was dispositioned and concluded that the occurrence does not count against this indicator.

2Q/02: Two technical specification high radiation area occurrences are reported for the second quarter 2002. One occurrence was an unauthorized entry into an area posted as a Locked High Radiation Area. The second occurrence was the discovery of an area posted as a Radiation Area that had general dose rates of 3 rem per hour at 30 centimeters following a reactor coolant system clean-up evolution. A review of dose records shows no unintended dose was received by plant personnel as a result of the two occurrences. Immediate actions were taken by plant radiation protection personnel to properly secure the areas to prevent unintended doses.

### RETS/ODCM Radiological Effluent



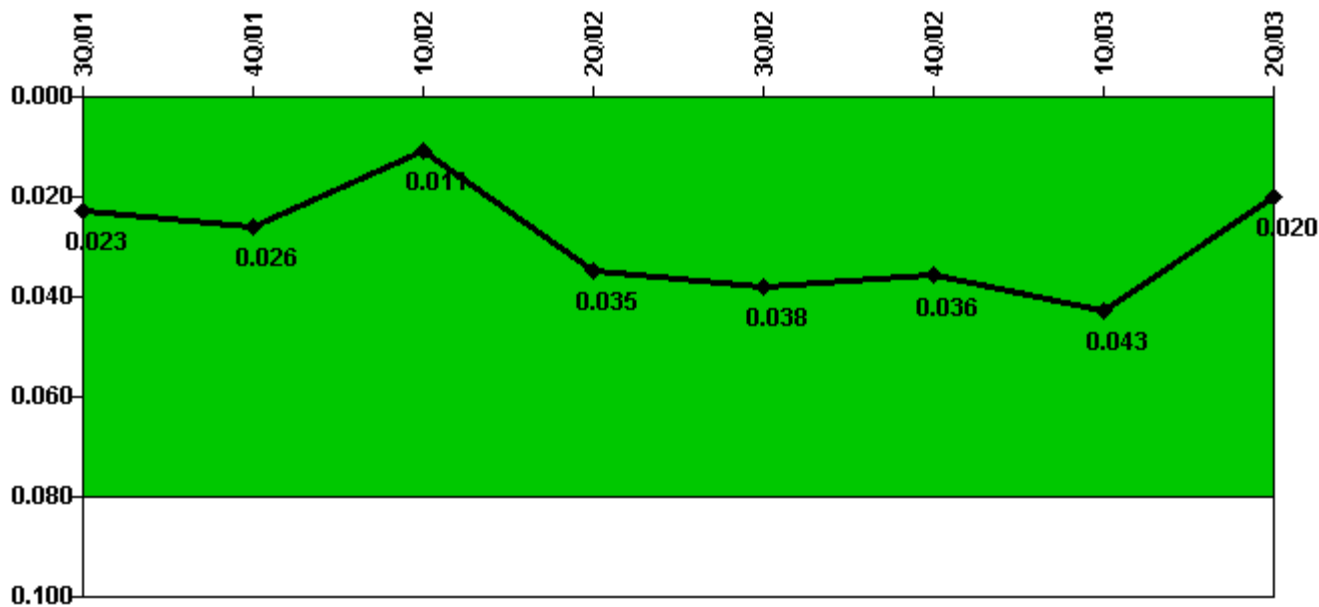
Thresholds: White > 1.0 Yellow > 3.0

#### Notes

RETS/ODCM Radiological Effluent	3Q/01	4Q/01	1Q/02	2Q/02	3Q/02	4Q/02	1Q/03	2Q/03
RETS/ODCM occurrences	0	0	0	0	0	0	0	0
Indicator value	0	0	0	0	0	0	0	0

Licensee Comments: none

### Protected Area Security Performance Index



Thresholds: White > 0.080

#### Notes

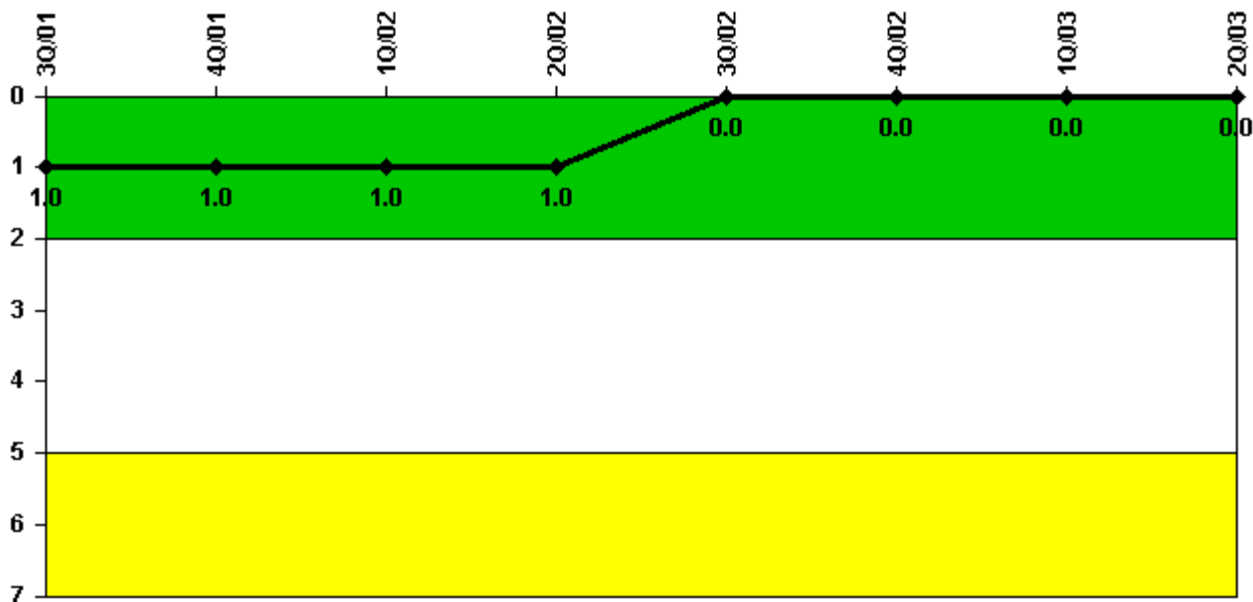
Protected Area Security Performance Index	3Q/01	4Q/01	1Q/02	2Q/02	3Q/02	4Q/02	1Q/03	2Q/03
IDS compensatory hours	49.50	103.70	28.20	680.50	111.70	52.10	263.40	25.70
CCTV compensatory hours	0	0	0	0	0	4.4	16.2	0
IDS normalization factor	1.40	1.40	1.40	1.40	1.40	1.40	1.50	1.40
CCTV normalization factor	1.0	1.0	1.0	1.0	1.0	1.0	1.0	1.0
Index Value	0.023	0.026	0.011	0.035	0.038	0.036	0.043	0.020

Licensee Comments:

2Q/03: In accordance with NEI 99-02, compensatory hours associated with scheduled equipment upgrades that are being performed and those compensatory hours for configuration issues associated with the equipment upgrades are excluded.



### Personnel Screening Program



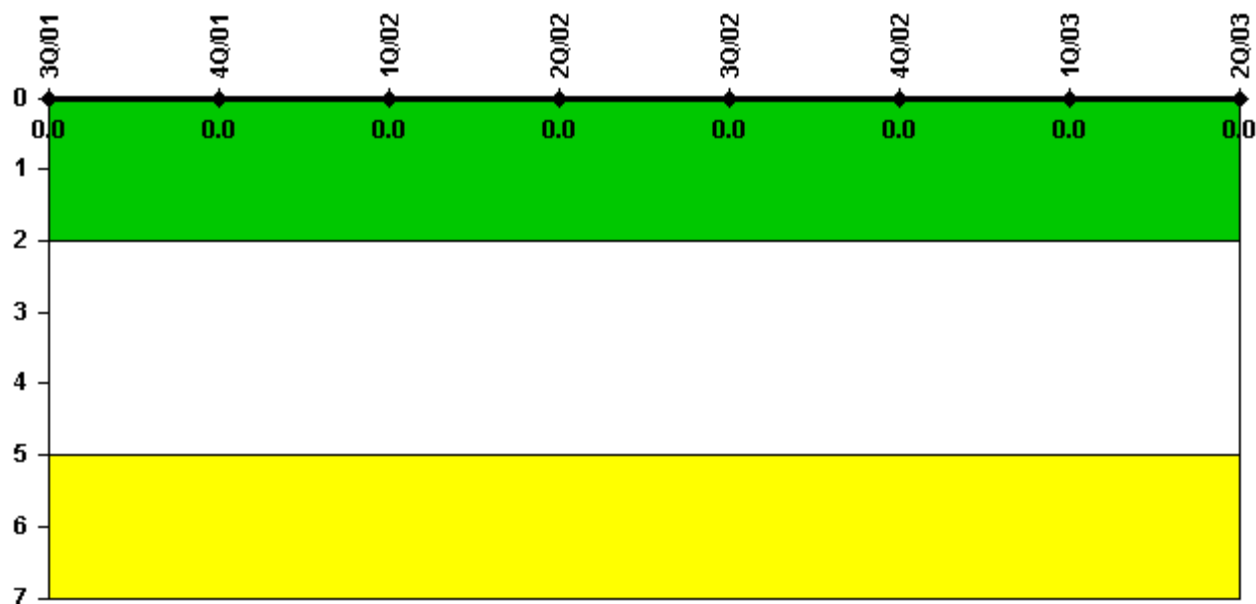
Thresholds: White > 2.0 Yellow > 5.0

#### Notes

Personnel Screening Program	3Q/01	4Q/01	1Q/02	2Q/02	3Q/02	4Q/02	1Q/03	2Q/03
Program failures	1	0	0	0	0	0	0	0
Indicator value	1	1	1	1	0	0	0	0

Licensee Comments: none

### FFD/Personnel Reliability



Thresholds: White > 2.0 Yellow > 5.0

#### Notes

FFD/Personnel Reliability	3Q/01	4Q/01	1Q/02	2Q/02	3Q/02	4Q/02	1Q/03	2Q/03
Program Failures	0	0	0	0	0	0	0	0
Indicator value	0	0	0	0	0	0	0	0

Licensee Comments: none

▲ [PI Summary](#) | [Inspection Findings Summary](#) | [Reactor Oversight Process](#)

Last Modified: July 22, 2003