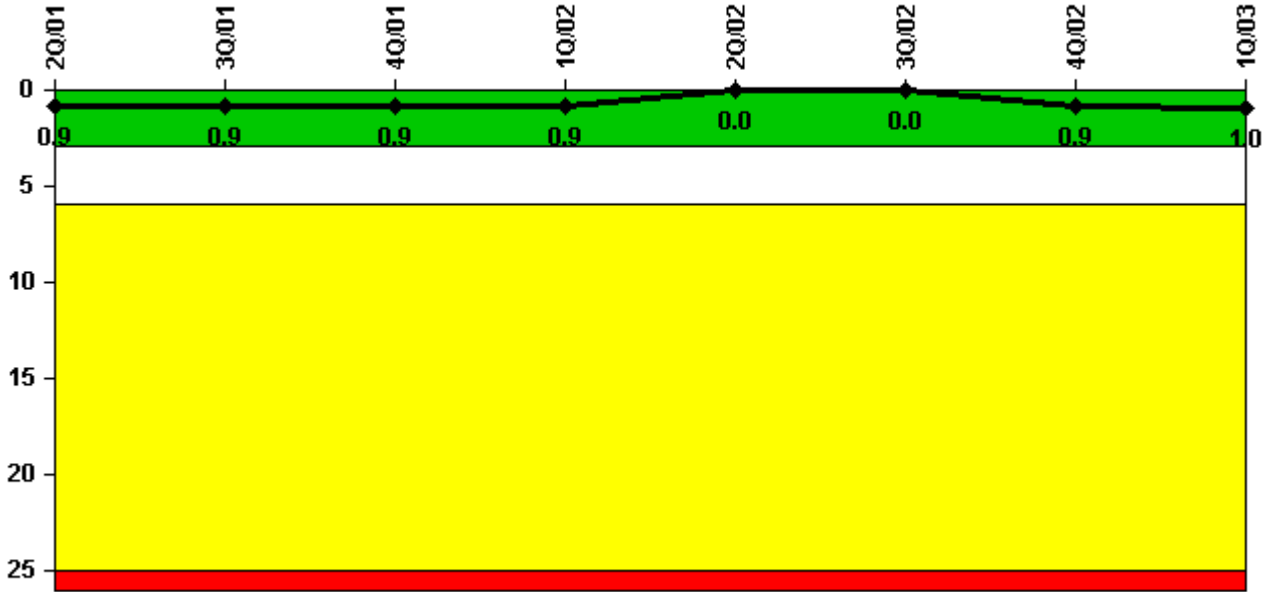


# Vogtle 2

## 1Q/2003 Performance Indicators

Licensee's General Comments: none

### Unplanned Scrams per 7000 Critical Hrs



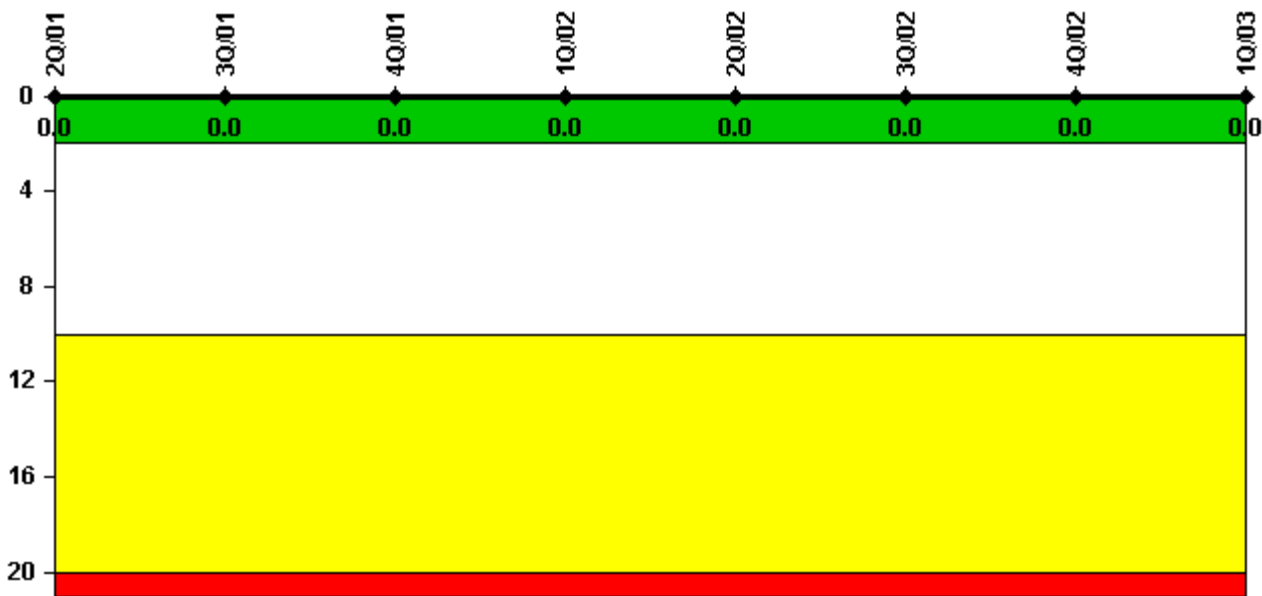
Thresholds: White > 3.0 Yellow > 6.0 Red > 25.0

### Notes

Unplanned Scrams per 7000 Critical Hrs	2Q/01	3Q/01	4Q/01	1Q/02	2Q/02	3Q/02	4Q/02	1Q/03
Unplanned scrams	1.0	0	0	0	0	0	1.0	0
Critical hours	1549.6	2208.0	2209.0	2160.0	2183.0	2208.0	838.9	2122.7
Indicator value	0.9	0.9	0.9	0.9	0	0	0.9	1.0

Licensee Comments: none

### Scrams with Loss of Normal Heat Removal



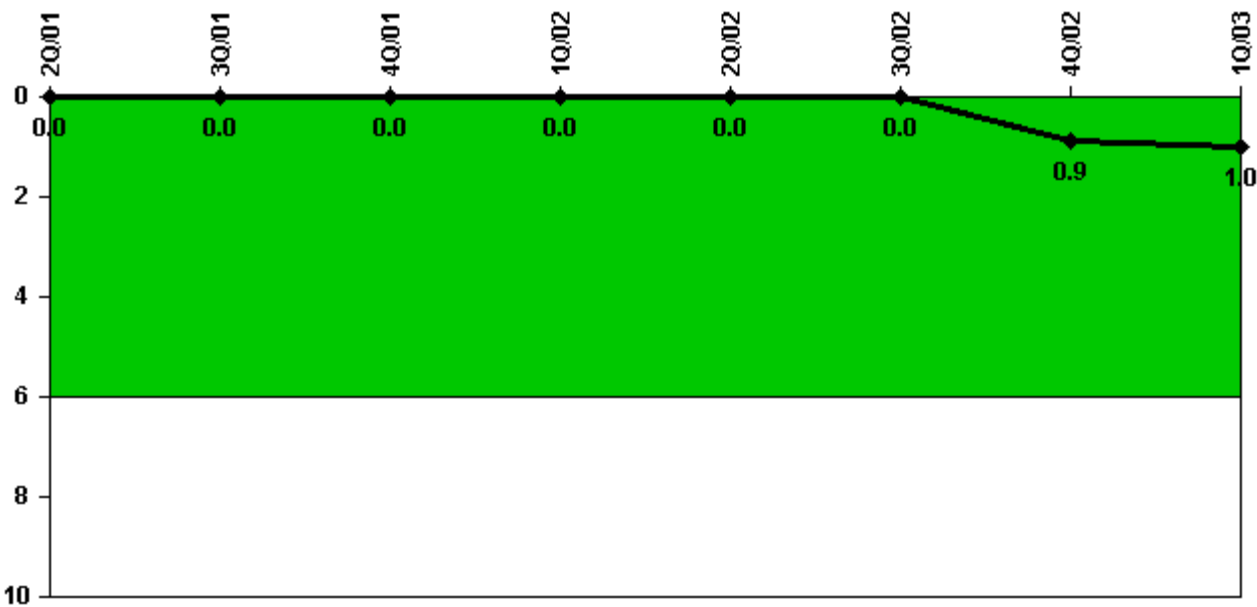
Thresholds: White > 2.0 Yellow > 10.0 Red > 20.0

#### Notes

Scrams with Loss of Normal Heat Removal	2Q/01	3Q/01	4Q/01	1Q/02	2Q/02	3Q/02	4Q/02	1Q/03
Scrams	0	0	0	0	0	0	0	0
Indicator value	0	0	0	0	0	0	0	0

Licensee Comments: none

### Unplanned Power Changes per 7000 Critical Hrs



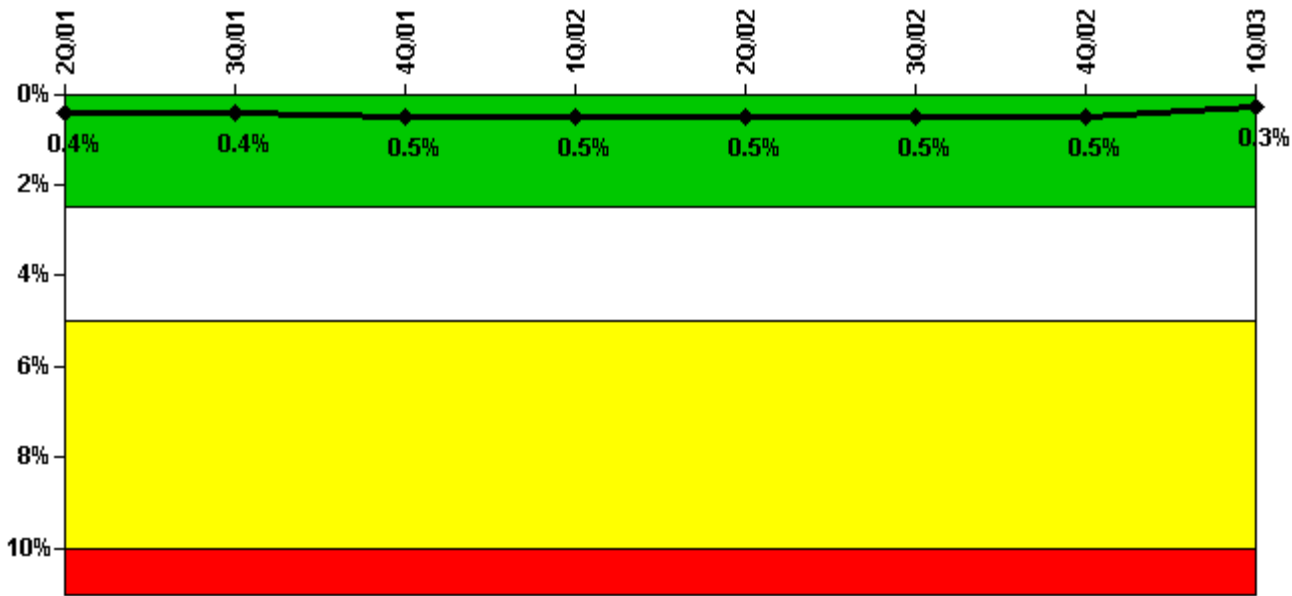
Thresholds: White > 6.0

#### Notes

Unplanned Power Changes per 7000 Critical Hrs	2Q/01	3Q/01	4Q/01	1Q/02	2Q/02	3Q/02	4Q/02	1Q/03
Unplanned power changes	0	0	0	0	0	0	1.0	0
Critical hours	1549.6	2208.0	2209.0	2160.0	2183.0	2208.0	838.9	2122.7
Indicator value	0	0	0	0	0	0	0.9	1.0

Licensee Comments: none

### Safety System Unavailability, Emergency AC Power



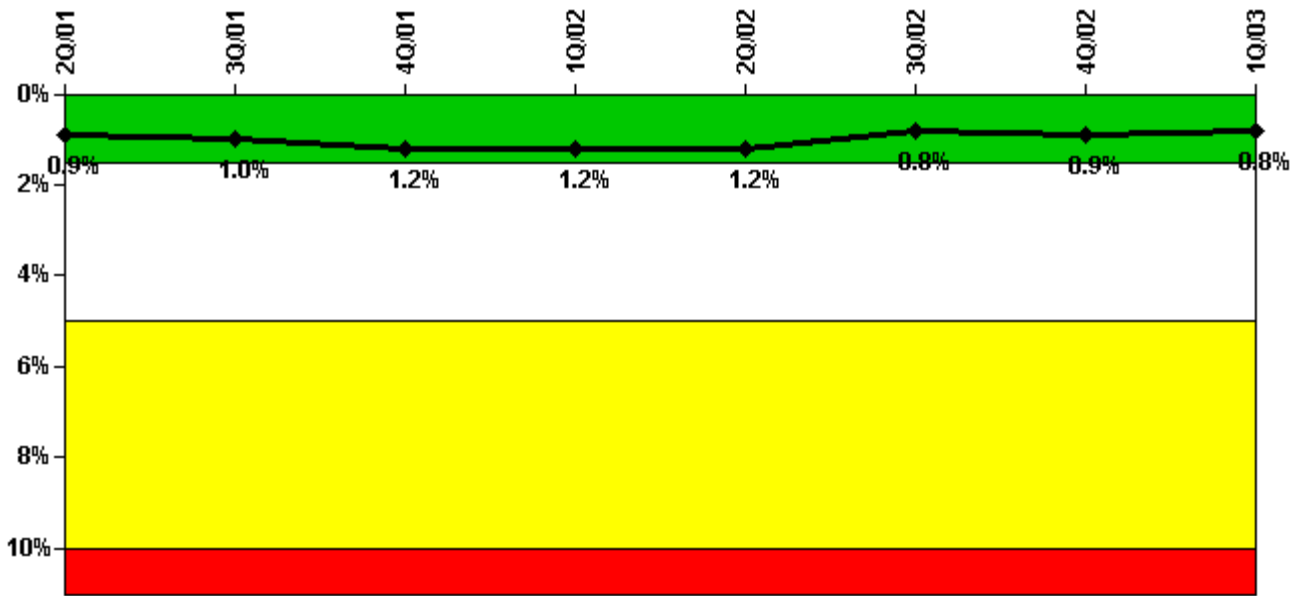
Thresholds: White > 2.5% Yellow > 5.0% Red > 10.0%

#### Notes

Safety System Unavailability, Emergency AC Power	2Q/01	3Q/01	4Q/01	1Q/02	2Q/02	3Q/02	4Q/02	1Q/03
<b>Train 1</b>								
Planned unavailable hours	1.88	1.46	35.86	2.28	2.15	1.50	1.21	4.16
Unplanned unavailable hours	0	0	0	0	0	0	0	0
Fault exposure hours	0	0	0	0	0	0	0	0
Effective Reset hours	0	0	0	0	0	0	0	0
Required hours	2183.00	2208.00	2209.00	2160.00	2183.00	2208.00	2209.00	2160.00
<b>Train 2</b>								
Planned unavailable hours	1.02	1.55	49.51	4.78	1.75	2.54	1.33	2.15
Unplanned unavailable hours	0	0	0	0	0	0	0	0
Fault exposure hours	0	0	0	0	0	0	0	0
Effective Reset hours	0	0	0	0	0	0	0	0
Required hours	2183.00	2208.00	2209.00	2160.00	2183.00	2208.00	2209.00	2160.00
Indicator value	0.4%	0.4%	0.5%	0.5%	0.5%	0.5%	0.5%	0.3%

Licensee Comments: none

### Safety System Unavailability, High Pressure Injection System (HPSI)



Thresholds: White > 1.5% Yellow > 5.0% Red > 10.0%

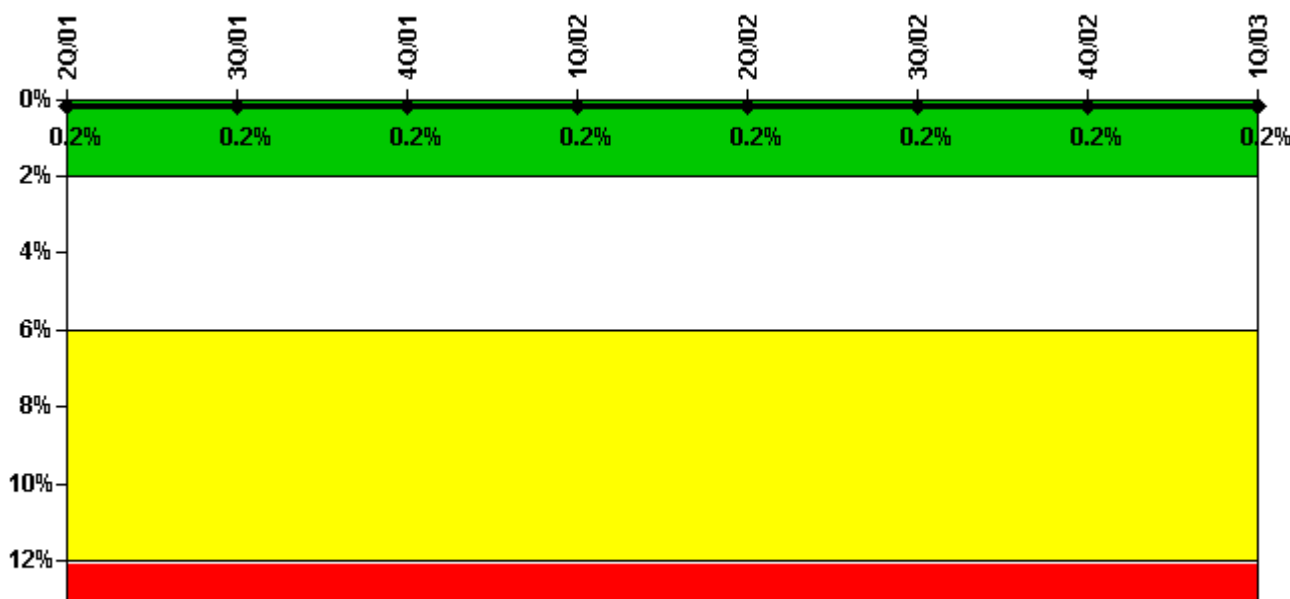
Notes

Safety System Unavailability, High Pressure Injection System (HPSI)	2Q/01	3Q/01	4Q/01	1Q/02	2Q/02	3Q/02	4Q/02	1Q/03
<b>Train 1</b>								
Planned unavailable hours	15.08	3.54	42.62	5.76	6.07	7.96	5.33	15.91
Unplanned unavailable hours	0	0	0	0	0	0	0	0
Fault exposure hours	0	0	0	0	0	0	0	0
Effective Reset hours	0	0	0	0	0	0	0	0
Required hours	1549.60	2208.00	2209.00	2160.00	2183.00	2208.00	838.94	2122.70
<b>Train 2</b>								
Planned unavailable hours	2.69	16.04	60.88	5.16	6.30	3.21	3.41	9.68
Unplanned unavailable hours	0	0	0	8.97	0	0	0	0
Fault exposure hours	0	0	0	0	0	0	0	0
Effective Reset hours	0	0	0	0	0	0	0	0
Required hours	1549.60	2208.00	2209.00	2160.00	2183.00	2208.00	838.94	2122.70
<b>Train 3</b>								
Planned unavailable hours	13.28	9.31	56.82	7.25	8.00	10.36	5.50	7.08
Unplanned unavailable hours	0	0	0	0	0	0	0	0
Fault exposure hours	0	0	0	0	0	0	0	0
Effective Reset hours	0	0	0	0	0	0	0	0
Required hours	1549.60	2208.00	2209.00	2160.00	2183.00	2208.00	838.94	2122.70
<b>Train 4</b>								
Planned unavailable hours	7.87	24.22	48.87	6.48	7.85	7.18	4.30	11.17
Unplanned unavailable hours	0	0	0	8.97	0	0	0	0
Fault exposure hours	0	0	0	0	0	0	0	0
Effective Reset hours	0	0	0	0	0	0	0	0

Required hours	1549.60	2208.00	2209.00	2160.00	2183.00	2208.00	838.94	2122.70
Indicator value	0.9%	1.0%	1.2%	1.2%	1.2%	0.8%	0.9%	0.8%

Licensee Comments: none

### Safety System Unavailability, Heat Removal System (AFW)



Thresholds: White > 2.0% Yellow > 6.0% Red > 12.0%

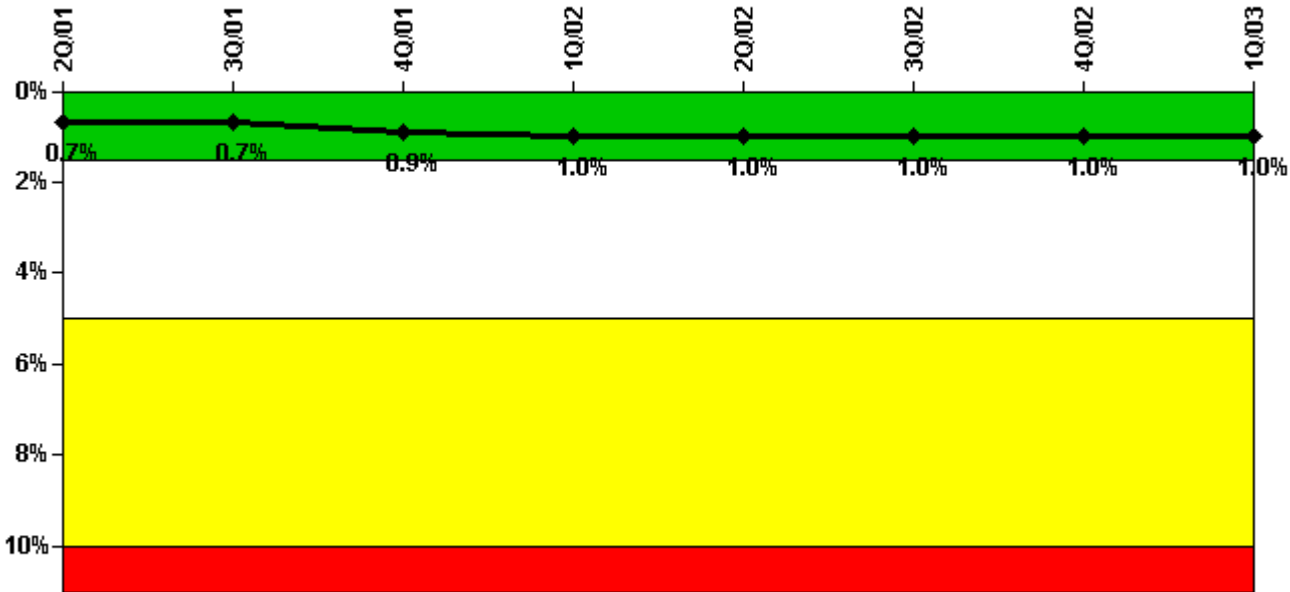
### Notes

Safety System Unavailability, Heat Removal System (AFW)	2Q/01	3Q/01	4Q/01	1Q/02	2Q/02	3Q/02	4Q/02	1Q/03
<b>Train 1</b>								
Planned unavailable hours	4.74	3.69	5.22	5.71	4.53	6.88	2.10	12.22
Unplanned unavailable hours	0	0	0	0	0	0	0	0
Fault exposure hours	0	0	0	0	0	0	0	0
Effective Reset hours	0	0	0	0	0	0	0	0
Required hours	1549.60	2208.00	2209.00	2160.00	2183.00	2208.00	838.94	2122.70
<b>Train 2</b>								
Planned unavailable hours	2.16	6.20	6.04	2.98	5.96	5.68	3.15	8.28
Unplanned unavailable hours	0	0	0	0	0	0	0	0
Fault exposure hours	0	0	0	0	0	0	0	0
Effective Reset hours	0	0	0	0	0	0	0	0
Required hours	1549.60	2208.00	2209.00	2160.00	2183.00	2208.00	838.94	2122.70
<b>Train 3</b>								

Planned unavailable hours	1.73	4.35	2.47	3.16	2.48	1.92	3.96	2.13
Unplanned unavailable hours	0	0	0	0	0	0	0	0
Fault exposure hours	0	0	0	0	0	0	0	0
Effective Reset hours	0	0	0	0	0	0	0	0
Required hours	1549.60	2208.00	2209.00	2160.00	2183.00	2208.00	838.94	2122.70
Indicator value	0.2%	0.2%	0.2%	0.2%	0.2%	0.2%	0.2%	0.2%

Licensee Comments: none

### Safety System Unavailability, Residual Heat Removal System



Thresholds: White > 1.5% Yellow > 5.0% Red > 10.0%

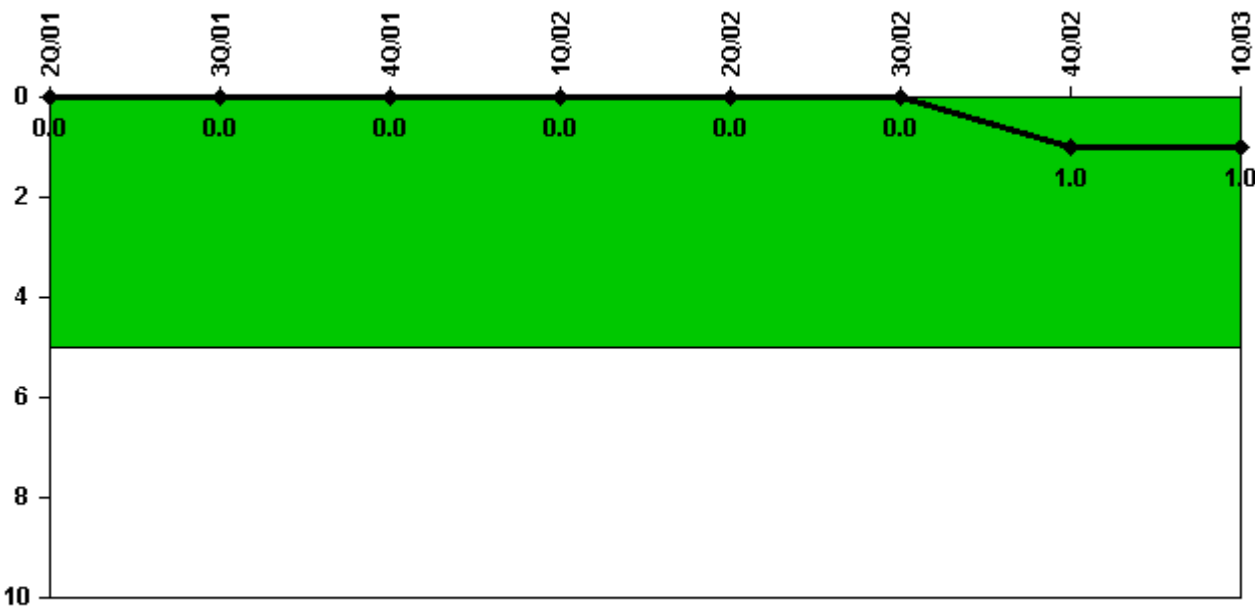
### Notes

Safety System Unavailability, Residual Heat Removal System	2Q/01	3Q/01	4Q/01	1Q/02	2Q/02	3Q/02	4Q/02	1Q/03
<b>Train 1</b>								
Planned unavailable hours	20.57	15.63	44.93	9.48	8.43	45.23	5.35	13.37
Unplanned unavailable hours	0	0	0	0	0	0	0	0
Fault exposure hours	0	0	0	0	0	0.75	0	0
Effective Reset hours	0	0	0	0	0	0	0	0
Required hours	2183.00	2208.00	2209.00	2160.00	2183.00	2208.00	2209.00	2160.00
<b>Train 2</b>								
Planned unavailable hours	6.37	25.12	49.81	8.01	8.45	19.15	6.89	21.23
Unplanned unavailable hours	0	0	0	8.97	0	0	0	0

Fault exposure hours	0	0	0	0	0	0	0	0
Effective Reset hours	0	0	0	0	0	0	0	0
Required hours	2183.00	2208.00	2209.00	2160.00	2183.00	2208.00	2209.00	2160.00
Indicator value	0.7%	0.7%	0.9%	1.0%	1.0%	1.0%	1.0%	1.0%

Licensee Comments: none

### Safety System Functional Failures (PWR)



Thresholds: White > 5.0

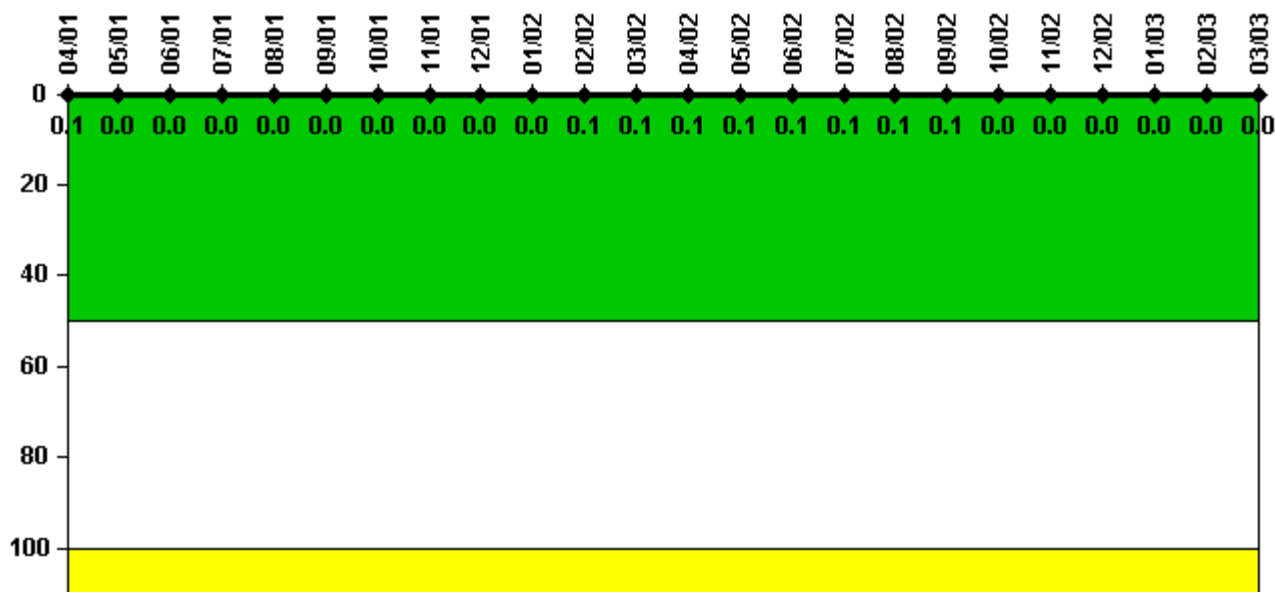
### Notes

Safety System Functional Failures (PWR)	2Q/01	3Q/01	4Q/01	1Q/02	2Q/02	3Q/02	4Q/02	1Q/03
Safety System Functional Failures	0	0	0	0	0	0	1	0
Indicator value	0	0	0	0	0	0	1	1

Licensee Comments: none



### Reactor Coolant System Activity



Thresholds: White > 50.0 Yellow > 100.0

**Notes**

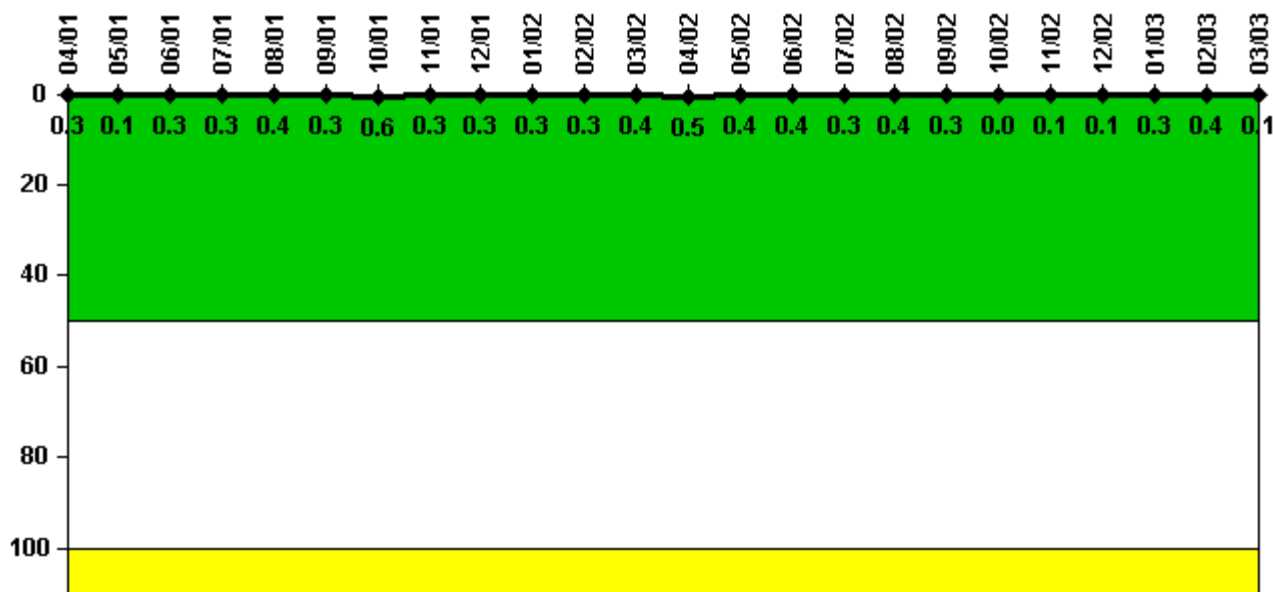
Reactor Coolant System Activity	4/01	5/01	6/01	7/01	8/01	9/01	10/01	11/01	12/01	1/02	2/02	3/02
Maximum activity	0.000644	0.000333	0.000316	0.000403	0.000342	0.000411	0.000425	0.000477	0.000497	0.000495	0.000503	0.000517
Technical specification limit	1.0	1.0	1.0	1.0	1.0	1.0	1.0	1.0	1.0	1.0	1.0	1.0
Indicator value	0.1	0	0	0	0	0	0	0	0	0	0.1	0.1

Reactor Coolant System Activity	4/02	5/02	6/02	7/02	8/02	9/02	10/02	11/02	12/02	1/03	2/03	3/03
Maximum activity	0.000585	0.000571	0.000604	0.000672	0.000644	0.000914	0.000457	0.000205	0.000198	0.000332	0.000289	0.000261
Technical specification limit	1.0	1.0	1.0	1.0	1.0	1.0	1.0	1.0	1.0	1.0	1.0	1.0
Indicator value	0.1	0.1	0.1	0.1	0.1	0.1	0	0	0	0	0	0

Licensee Comments: none

### Reactor Coolant System Leakage



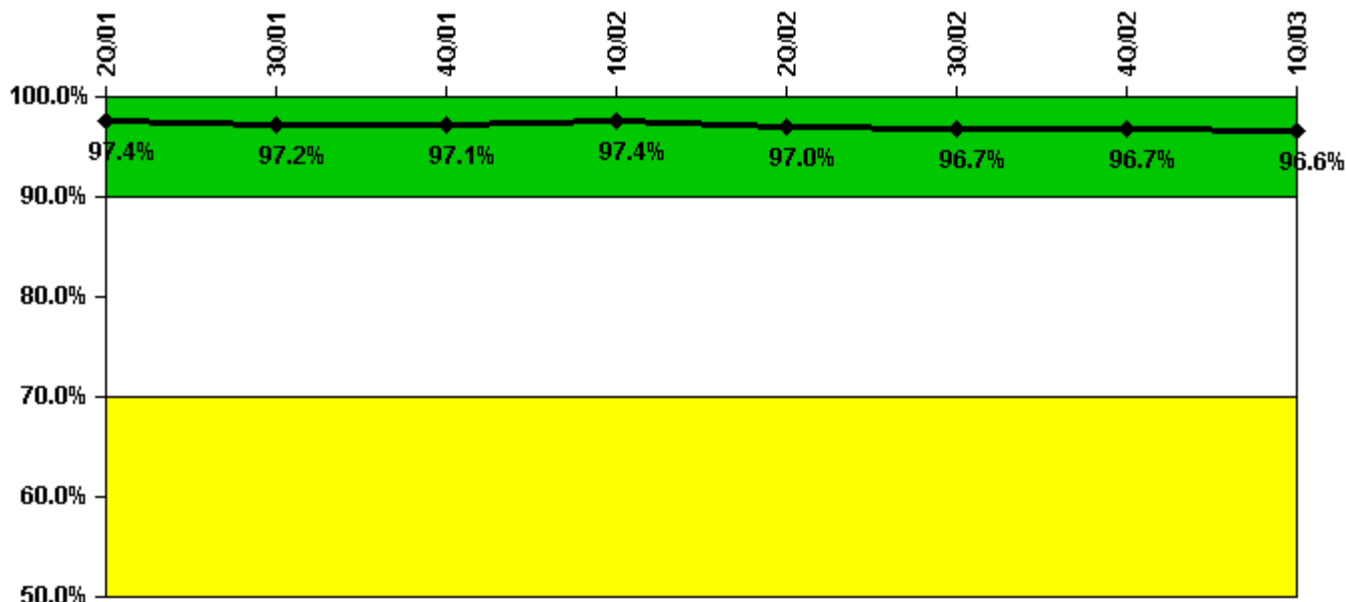
Thresholds: White > 50.0 Yellow > 100.0

#### Notes

Reactor Coolant System Leakage	4/01	5/01	6/01	7/01	8/01	9/01	10/01	11/01	12/01	1/02	2/02	3/02
Maximum leakage	0.034	0.008	0.034	0.031	0.037	0.031	0.058	0.028	0.034	0.034	0.034	0.038
Technical specification limit	10.0	10.0	10.0	10.0	10.0	10.0	10.0	10.0	10.0	10.0	10.0	10.0
Indicator value	0.3	0.1	0.3	0.3	0.4	0.3	0.6	0.3	0.3	0.3	0.3	0.4
Reactor Coolant System Leakage	4/02	5/02	6/02	7/02	8/02	9/02	10/02	11/02	12/02	1/03	2/03	3/03
Maximum leakage	0.050	0.036	0.036	0.031	0.040	0.034	0.001	0.009	0.005	0.031	0.035	0.010
Technical specification limit	10.0	10.0	10.0	10.0	10.0	10.0	10.0	10.0	10.0	10.0	10.0	10.0
Indicator value	0.5	0.4	0.4	0.3	0.4	0.3	0	0.1	0.1	0.3	0.4	0.1

Licensee Comments: none

### Drill/Exercise Performance



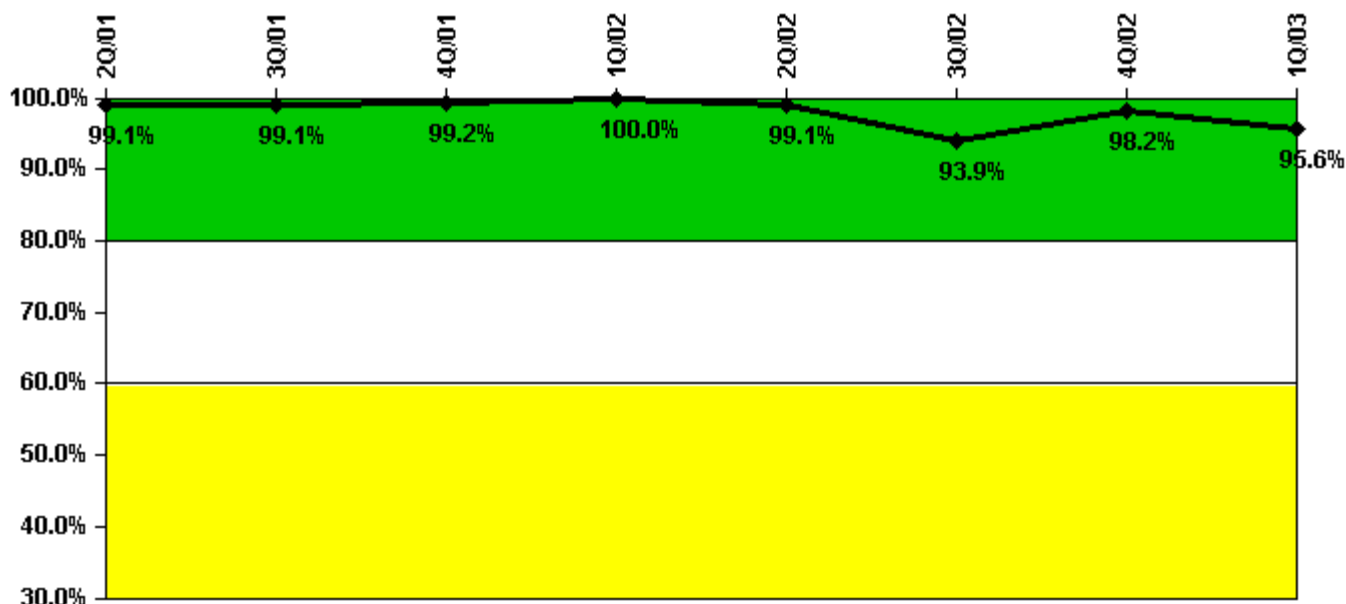
Thresholds: White < 90.0% Yellow < 70.0%

#### Notes

Drill/Exercise Performance	2Q/01	3Q/01	4Q/01	1Q/02	2Q/02	3Q/02	4Q/02	1Q/03
Successful opportunities	85.0	163.0	143.0	54.0	121.0	119.0	53.0	111.0
Total opportunities	91.0	169.0	148.0	54.0	124.0	125.0	54.0	114.0
Indicator value	97.4%	97.2%	97.1%	97.4%	97.0%	96.7%	96.7%	96.6%

Licensee Comments: none

### ERO Drill Participation



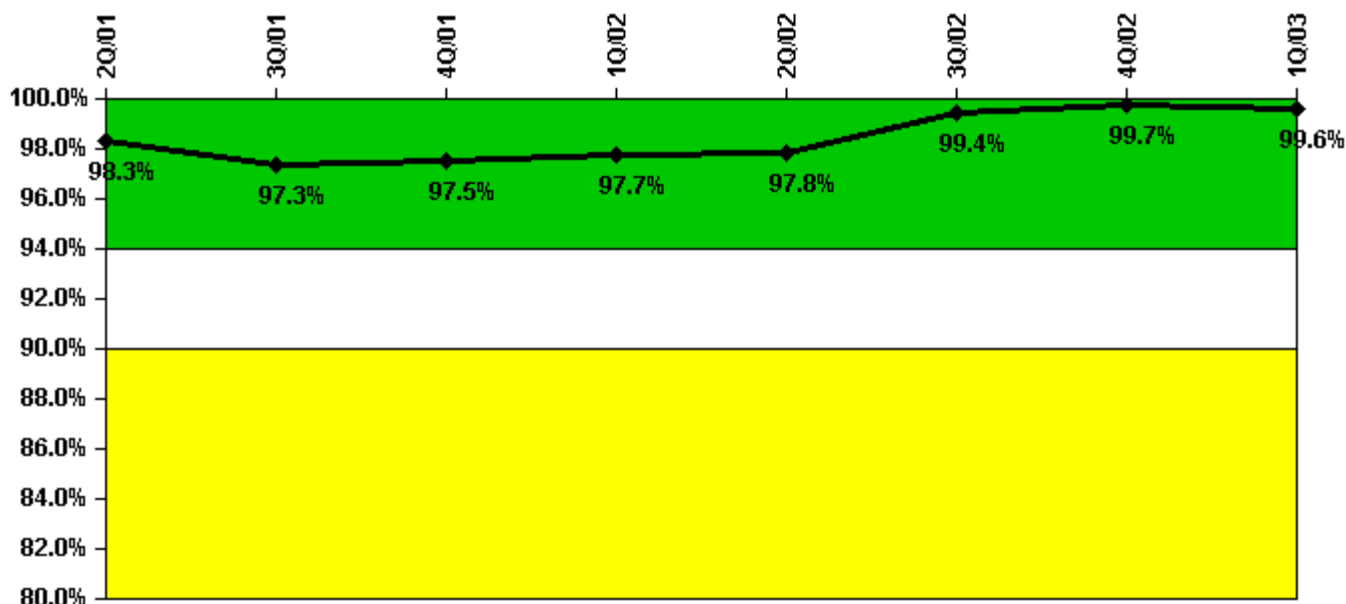
Thresholds: White < 80.0% Yellow < 60.0%

#### Notes

ERO Drill Participation	2Q/01	3Q/01	4Q/01	1Q/02	2Q/02	3Q/02	4Q/02	1Q/03
Participating Key personnel	114.0	116.0	120.0	116.0	114.0	108.0	109.0	109.0
Total Key personnel	115.0	117.0	121.0	116.0	115.0	115.0	111.0	114.0
Indicator value	99.1%	99.1%	99.2%	100.0%	99.1%	93.9%	98.2%	95.6%

Licensee Comments: none

### Alert & Notification System



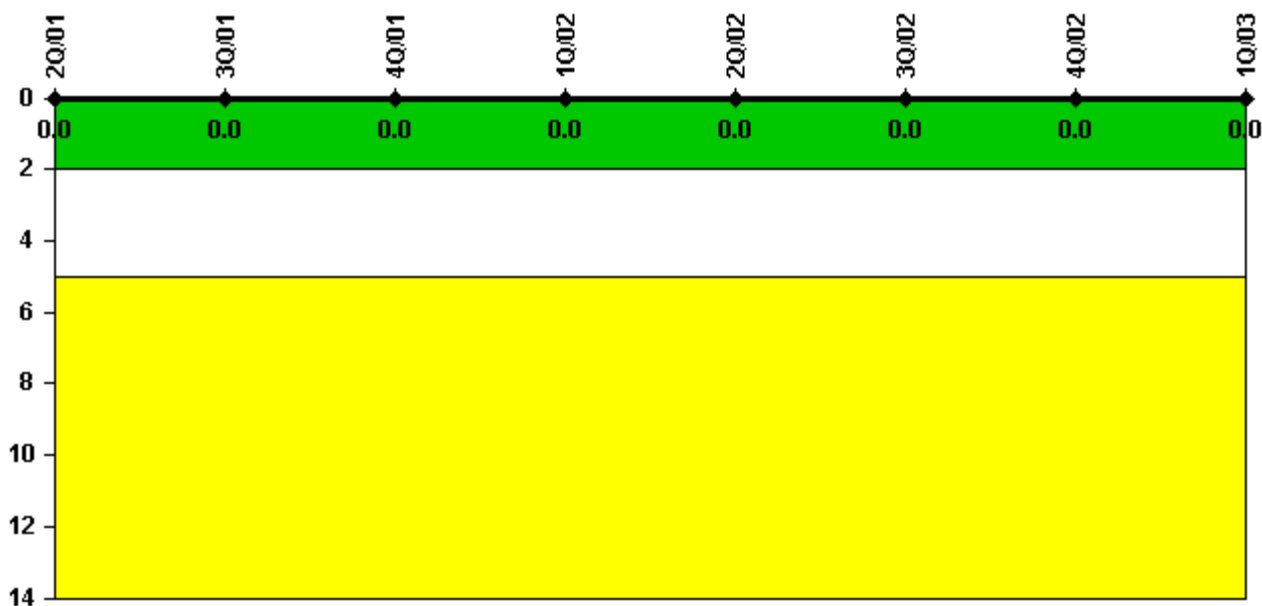
Thresholds: White < 94.0% Yellow < 90.0%

#### Notes

Alert & Notification System	2Q/01	3Q/01	4Q/01	1Q/02	2Q/02	3Q/02	4Q/02	1Q/03
Successful siren-tests	606	572	648	562	608	657	610	606
Total sirens-tests	610	611	658	564	611	658	611	611
Indicator value	98.3%	97.3%	97.5%	97.7%	97.8%	99.4%	99.7%	99.6%

Licensee Comments: none

### Occupational Exposure Control Effectiveness



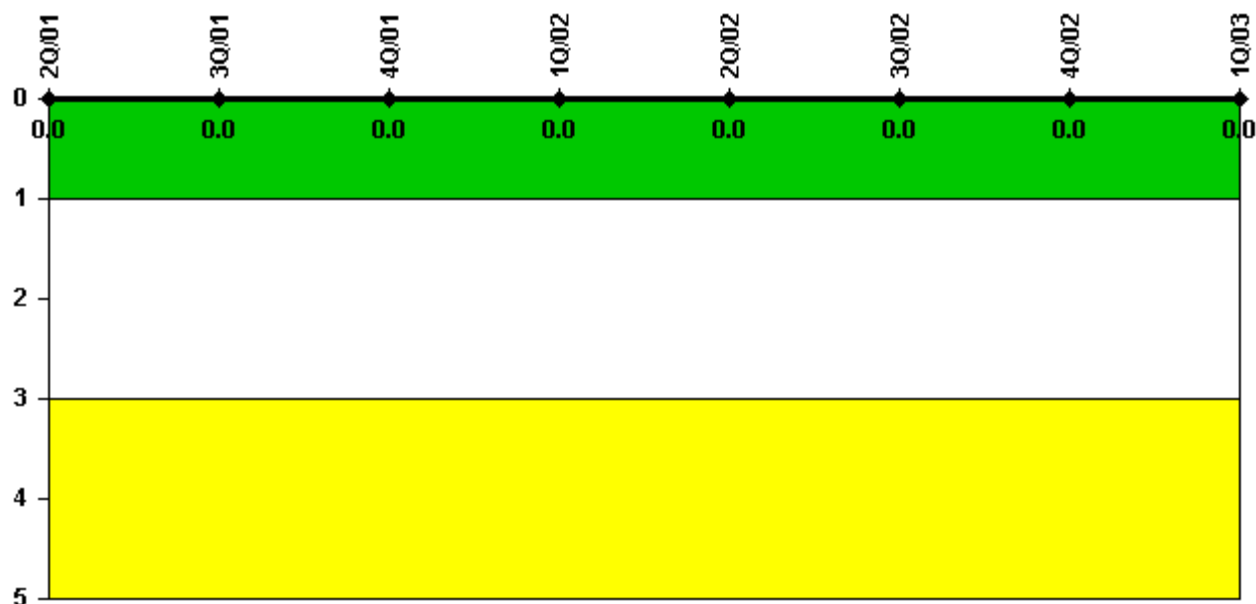
Thresholds: White > 2.0 Yellow > 5.0

**Notes**

Occupational Exposure Control Effectiveness	2Q/01	3Q/01	4Q/01	1Q/02	2Q/02	3Q/02	4Q/02	1Q/03
High radiation area occurrences	0	0	0	0	0	0	0	0
Very high radiation area occurrences	0	0	0	0	0	0	0	0
Unintended exposure occurrences	0	0	0	0	0	0	0	0
Indicator value	0	0	0	0	0	0	0	0

Licensee Comments: none

### RETS/ODCM Radiological Effluent



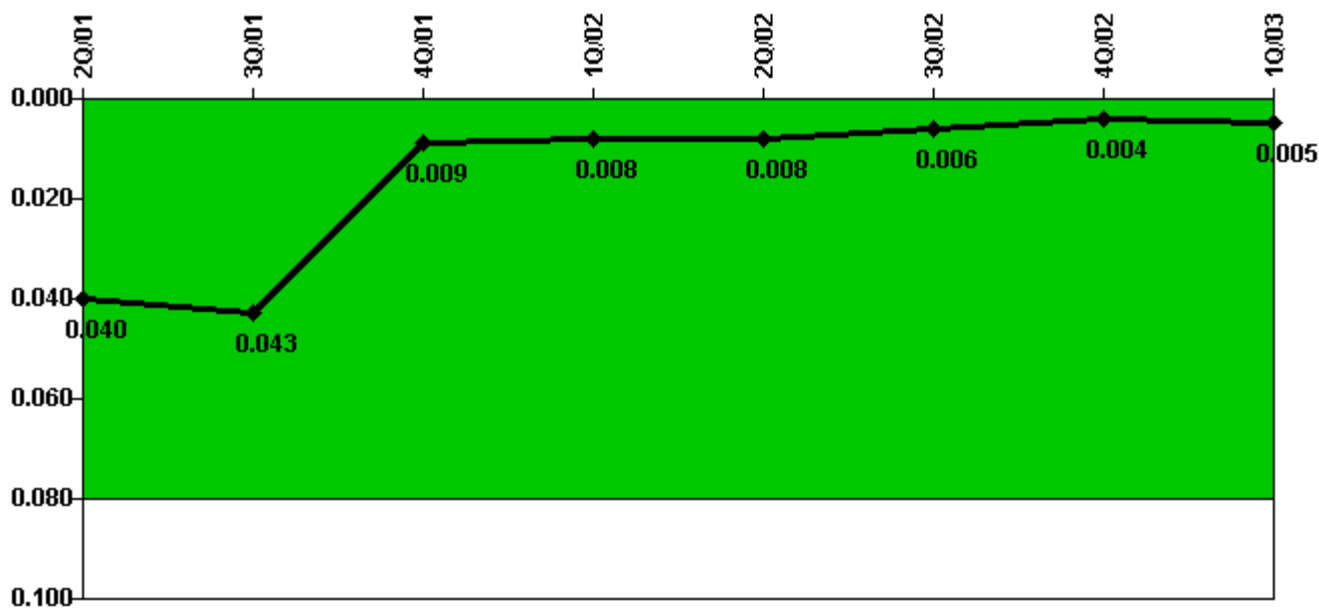
Thresholds: White > 1.0 Yellow > 3.0

#### Notes

RETS/ODCM Radiological Effluent	2Q/01	3Q/01	4Q/01	1Q/02	2Q/02	3Q/02	4Q/02	1Q/03
RETS/ODCM occurrences	0	0	0	0	0	0	0	0
Indicator value	0	0	0	0	0	0	0	0

Licensee Comments: none

### Protected Area Security Performance Index



Thresholds: White > 0.080

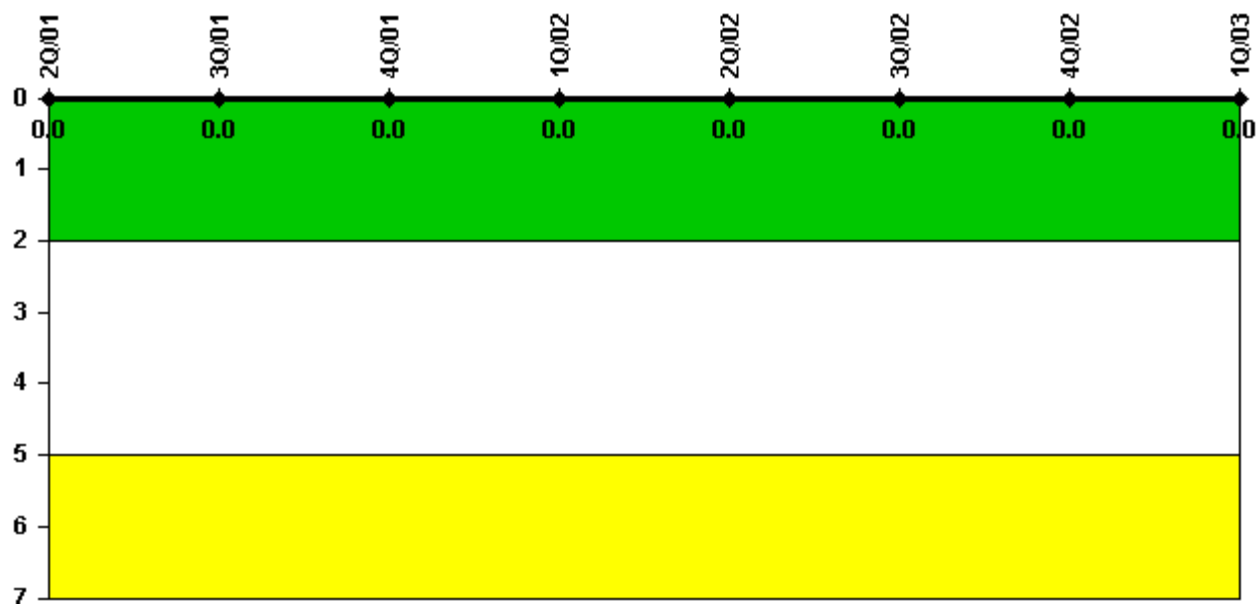
#### Notes

Protected Area Security Performance Index	2Q/01	3Q/01	4Q/01	1Q/02	2Q/02	3Q/02	4Q/02	1Q/03
IDS compensatory hours	29.10	132.00	85.98	56.55	67.01	61.36	9.39	85.30
CCTV compensatory hours	19.7	20.9	0	0	0.8	5.3	7.2	0
IDS normalization factor	3.00	3.00	3.00	3.00	3.00	3.00	3.00	3.00
CCTV normalization factor	1.0	1.0	1.0	1.0	1.0	1.0	1.0	1.0
Index Value	0.040	0.043	0.009	0.008	0.008	0.006	0.004	0.005

Licensee Comments: none



### Personnel Screening Program



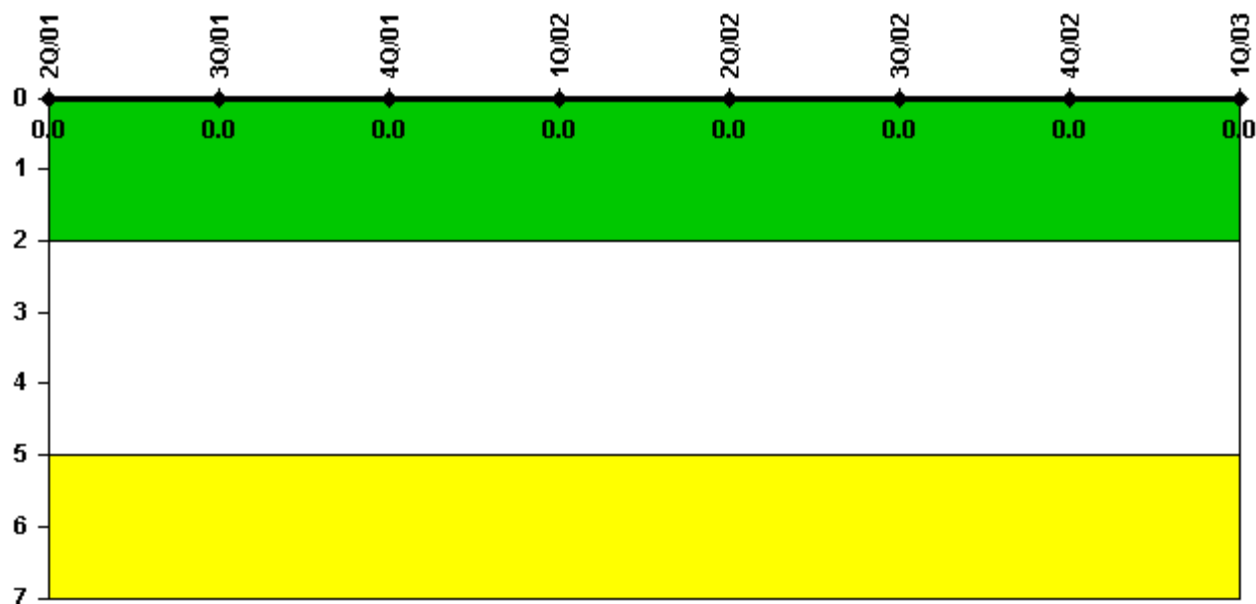
Thresholds: White > 2.0 Yellow > 5.0

#### Notes

Personnel Screening Program	2Q/01	3Q/01	4Q/01	1Q/02	2Q/02	3Q/02	4Q/02	1Q/03
Program failures	0	0	0	0	0	0	0	0
Indicator value	0	0	0	0	0	0	0	0

Licensee Comments: none

### FFD/Personnel Reliability



Thresholds: White > 2.0 Yellow > 5.0

#### Notes

FFD/Personnel Reliability	2Q/01	3Q/01	4Q/01	1Q/02	2Q/02	3Q/02	4Q/02	1Q/03
Program Failures	0	0	0	0	0	0	0	0
Indicator value	0	0	0	0	0	0	0	0

Licensee Comments: none

▲ [PI Summary](#) | [Inspection Findings Summary](#) | [Reactor Oversight Process](#)

Last Modified: April 22, 2003