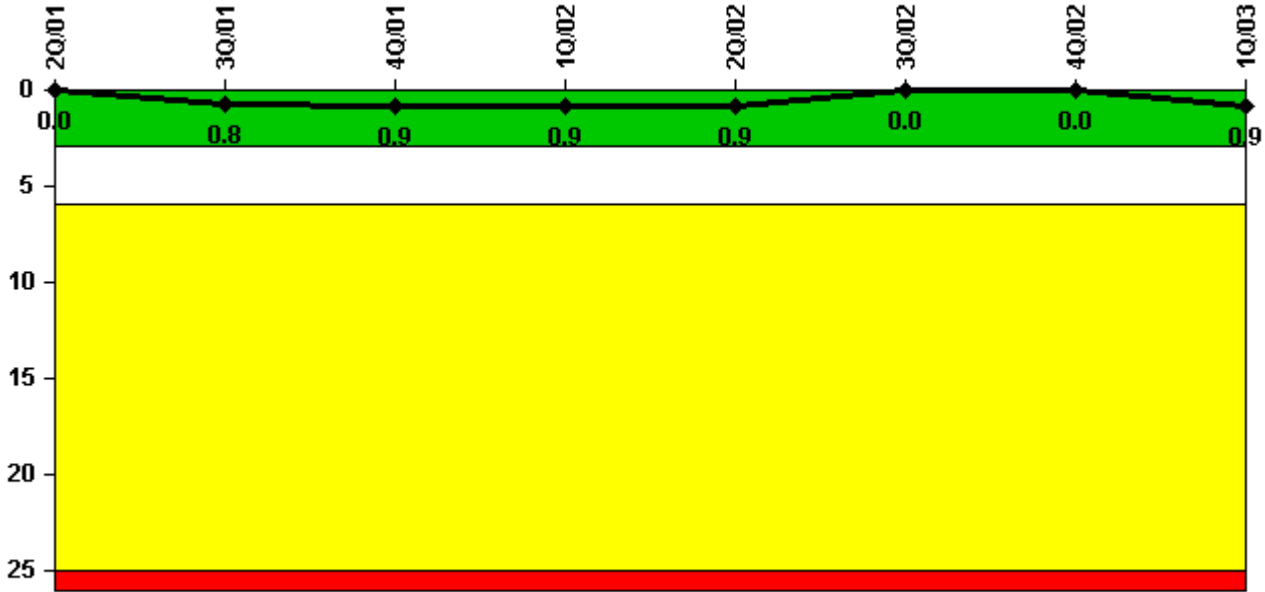


Turkey Point 3

1Q/2003 Performance Indicators

Licensee's General Comments: none

Unplanned Scrams per 7000 Critical Hrs



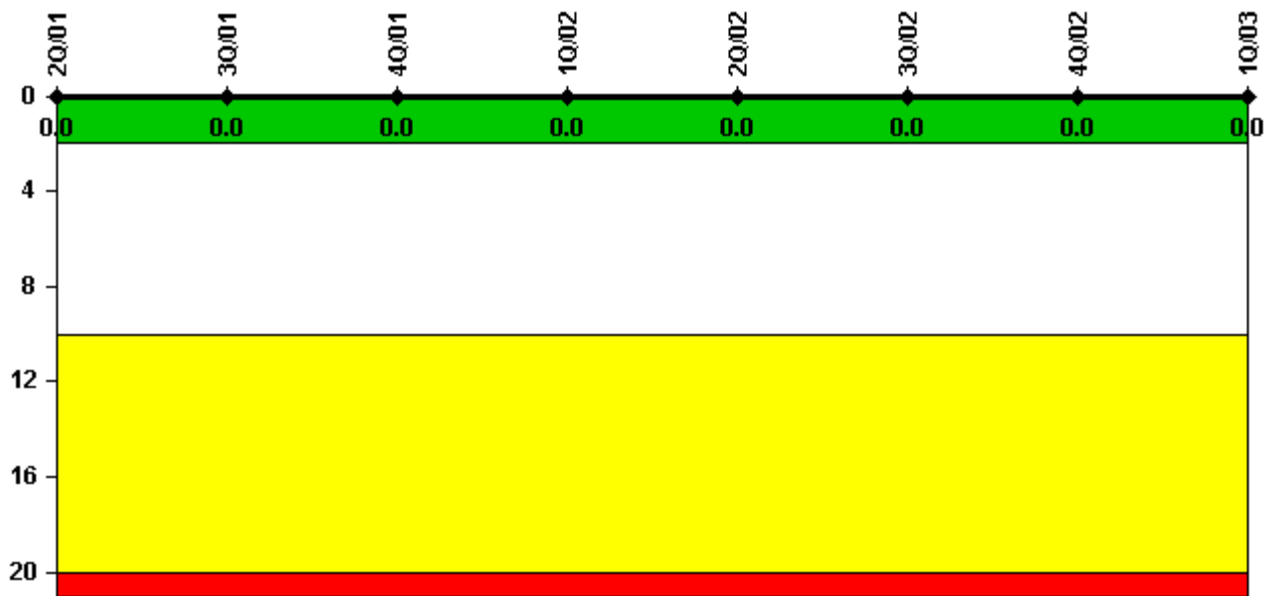
Thresholds: White > 3.0 Yellow > 6.0 Red > 25.0

Notes

Unplanned Scrams per 7000 Critical Hrs	2Q/01	3Q/01	4Q/01	1Q/02	2Q/02	3Q/02	4Q/02	1Q/03
Unplanned scrams	0	1.0	0	0	0	0	0	1.0
Critical hours	2183.0	2092.7	1584.2	2160.0	2183.0	2208.0	2209.0	1481.6
Indicator value	0	0.8	0.9	0.9	0.9	0	0	0.9

Licensee Comments: none

Scrams with Loss of Normal Heat Removal



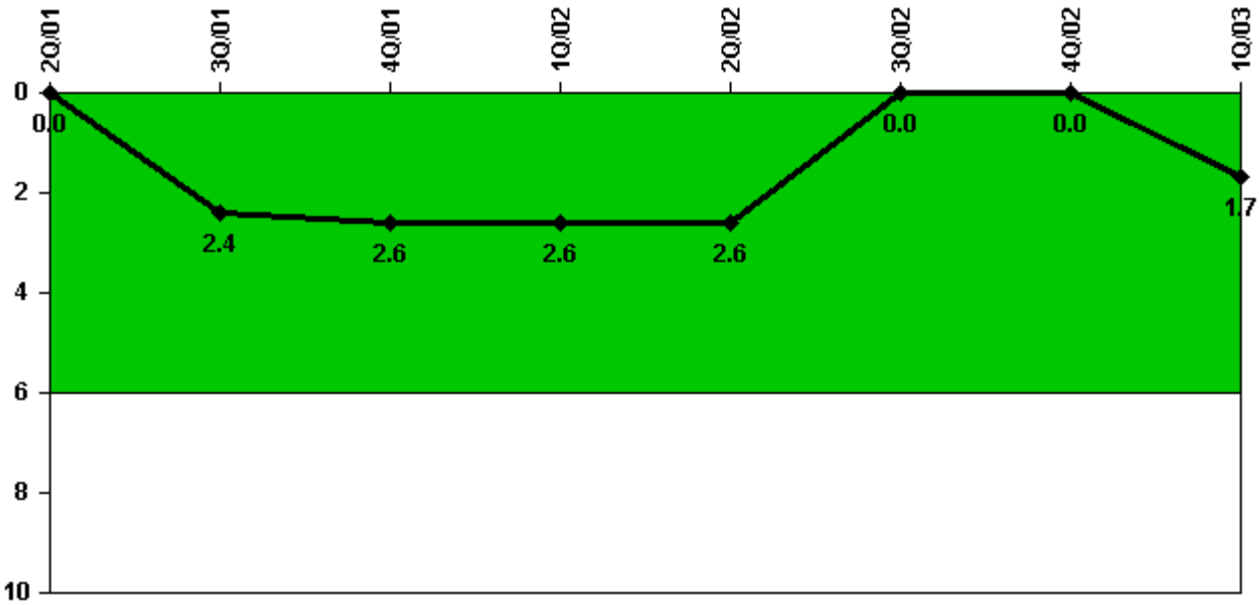
Thresholds: White > 2.0 Yellow > 10.0 Red > 20.0

Notes

Scrams with Loss of Normal Heat Removal	2Q/01	3Q/01	4Q/01	1Q/02	2Q/02	3Q/02	4Q/02	1Q/03
Scrams	0	0	0	0	0	0	0	0
Indicator value	0	0	0	0	0	0	0	0

Licensee Comments: none

Unplanned Power Changes per 7000 Critical Hrs



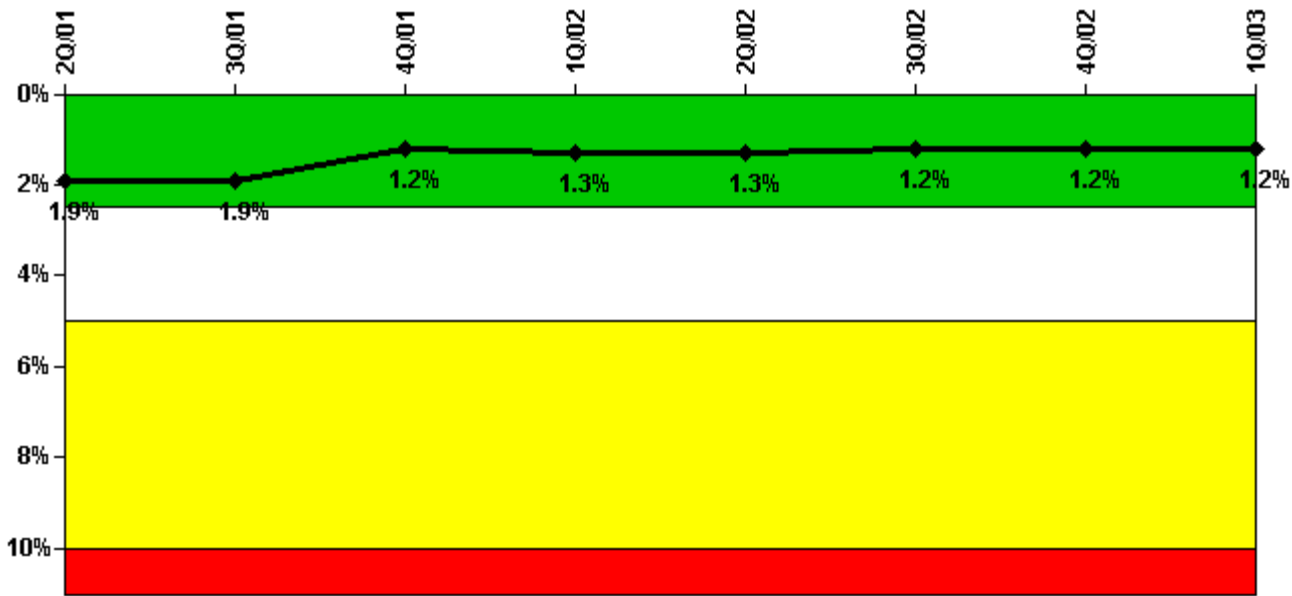
Thresholds: White > 6.0

Notes

Unplanned Power Changes per 7000 Critical Hrs	2Q/01	3Q/01	4Q/01	1Q/02	2Q/02	3Q/02	4Q/02	1Q/03
Unplanned power changes	0	3.0	0	0	0	0	0	2.0
Critical hours	2183.0	2092.7	1584.2	2160.0	2183.0	2208.0	2209.0	1481.6
Indicator value	0	2.4	2.6	2.6	2.6	0	0	1.7

Licensee Comments: none

Safety System Unavailability, Emergency AC Power



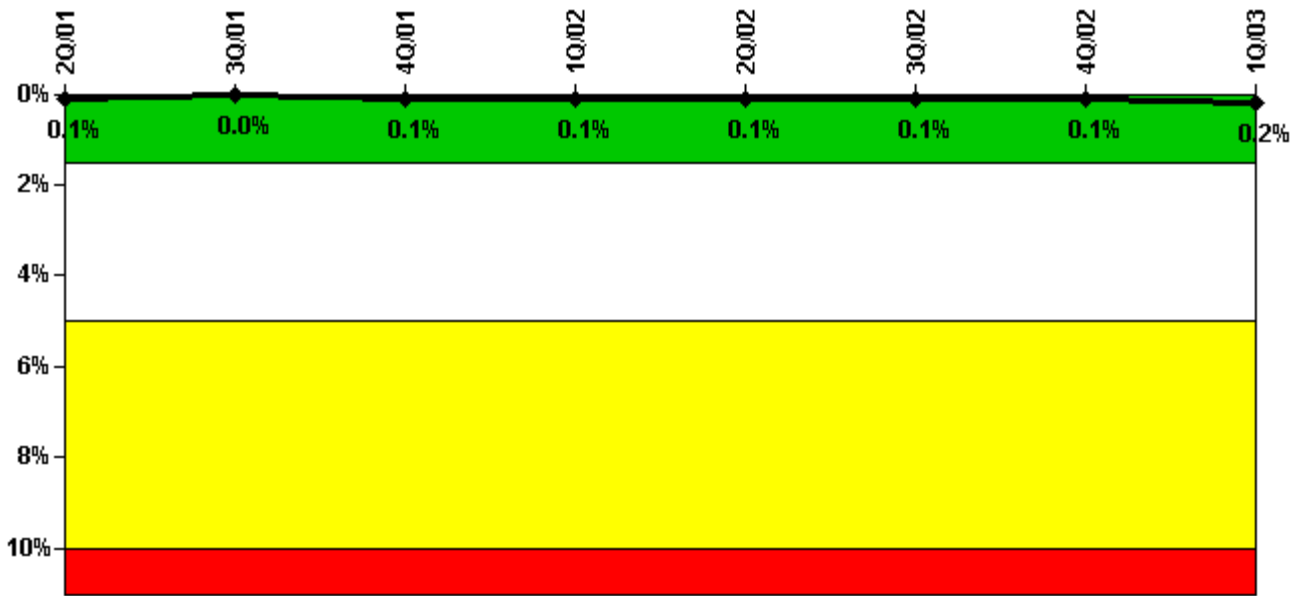
Thresholds: White > 2.5% Yellow > 5.0% Red > 10.0%

Notes

Safety System Unavailability, Emergency AC Power	2Q/01	3Q/01	4Q/01	1Q/02	2Q/02	3Q/02	4Q/02	1Q/03
Train 1								
Planned unavailable hours	34.50	3.40	8.50	1.60	2.40	3.30	3.20	2.00
Unplanned unavailable hours	8.20	0.80	1.60	0	0	0	0	0
Fault exposure hours	26.30	0	0	0	0	0	0	0
Effective Reset hours	0	0	0	0	0	0	0	0
Required hours	2183.00	2201.00	1923.00	2160.00	2183.00	2208.00	2209.00	1878.20
Train 2								
Planned unavailable hours	2.40	4.60	1.60	9.20	1.60	5.90	5.00	6.40
Unplanned unavailable hours	12.70	0.80	32.50	23.10	0	0	2.30	3.20
Fault exposure hours	0	0	0	0	0	0	0	0
Effective Reset hours	0	0	0	0	0	0	0	0
Required hours	2183.00	2201.00	1923.00	2160.00	2183.00	2208.00	2209.00	1878.20
Indicator value	1.9%	1.9%	1.2%	1.3%	1.3%	1.2%	1.2%	1.2%

Licensee Comments: none

Safety System Unavailability, High Pressure Injection System (HPSI)



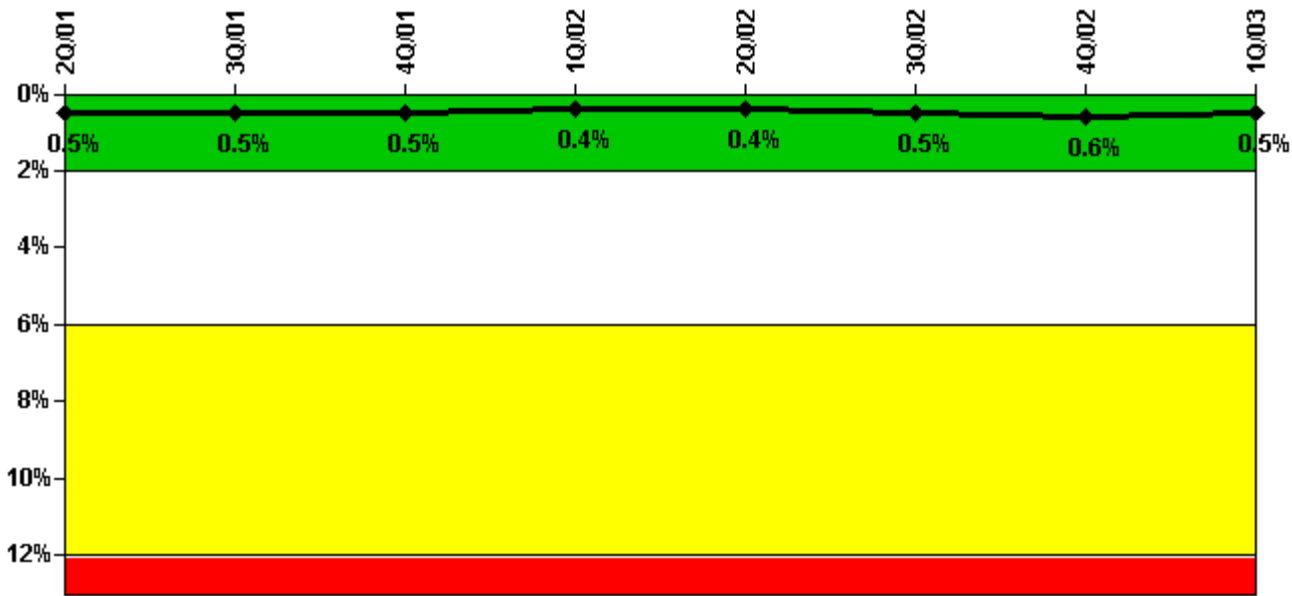
Thresholds: White > 1.5% Yellow > 5.0% Red > 10.0%

Notes

Safety System Unavailability, High Pressure Injection System (HPSI)	2Q/01	3Q/01	4Q/01	1Q/02	2Q/02	3Q/02	4Q/02	1Q/03
Train 1								
Planned unavailable hours	9.25	0.30	10.50	0	0	0	0	13.80
Unplanned unavailable hours	0	0	0	0	0	0	0	0
Fault exposure hours	0	0	0	0	0	0	0	0
Effective Reset hours	0	0	0	0	0	0	0	0
Required hours	2183.00	2188.00	1617.40	2160.00	2183.00	2208.00	2209.00	1572.00
Train 2								
Planned unavailable hours	0	0.30	13.50	0.40	0	12.40	0	18.70
Unplanned unavailable hours	0	0	7.00	0	0	0	0	3.30
Fault exposure hours	0	0	0	0	0	0	0	0
Effective Reset hours	0	0	0	0	0	0	0	0
Required hours	2183.00	2188.00	1617.40	2160.00	2183.00	2208.00	2209.00	1572.00
Indicator value	0.1%	0%	0.1%	0.1%	0.1%	0.1%	0.1%	0.2%

Licensee Comments: none

Safety System Unavailability, Heat Removal System (AFW)



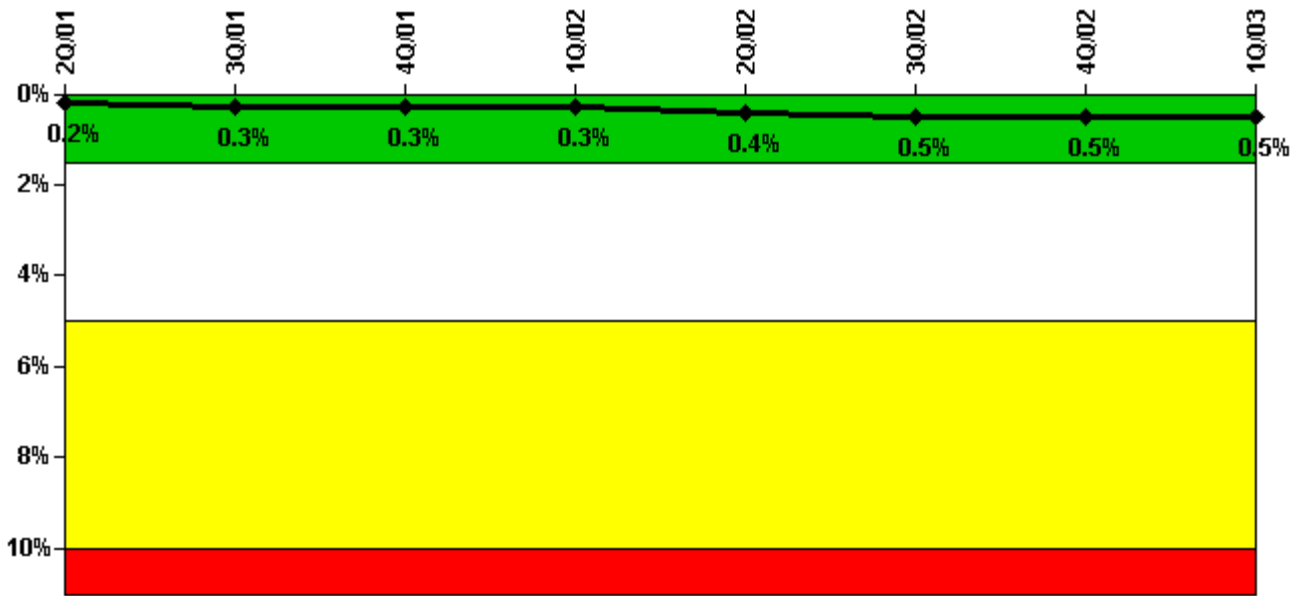
Thresholds: White > 2.0% Yellow > 6.0% Red > 12.0%

Notes

Safety System Unavailability, Heat Removal System (AFW)	2Q/01	3Q/01	4Q/01	1Q/02	2Q/02	3Q/02	4Q/02	1Q/03
Train 1								
Planned unavailable hours	3.80	0.40	0.90	0.50	0	8.00	0	0
Unplanned unavailable hours	0	0	0.50	0	10.90	0	5.30	5.90
Fault exposure hours	0	0	0	0	0	0	0	0
Effective Reset hours	0	0	0	0	0	0	0	0
Required hours	2183.00	2188.00	1617.20	2160.00	2183.00	2208.00	2209.00	1572.00
Train 2								
Planned unavailable hours	0.30	0.10	0.90	0.40	0	54.00	27.20	0
Unplanned unavailable hours	0	0	0	4.00	0	0	0	5.90
Fault exposure hours	0	0	0	0	0	0	0	0
Effective Reset hours	0	0	0	0	0	0	0	0
Required hours	2183.00	2188.00	1617.20	2160.00	2183.00	2208.00	2209.00	1572.00
Indicator value	0.5%	0.5%	0.5%	0.4%	0.4%	0.5%	0.6%	0.5%

Licensee Comments: none

Safety System Unavailability, Residual Heat Removal System



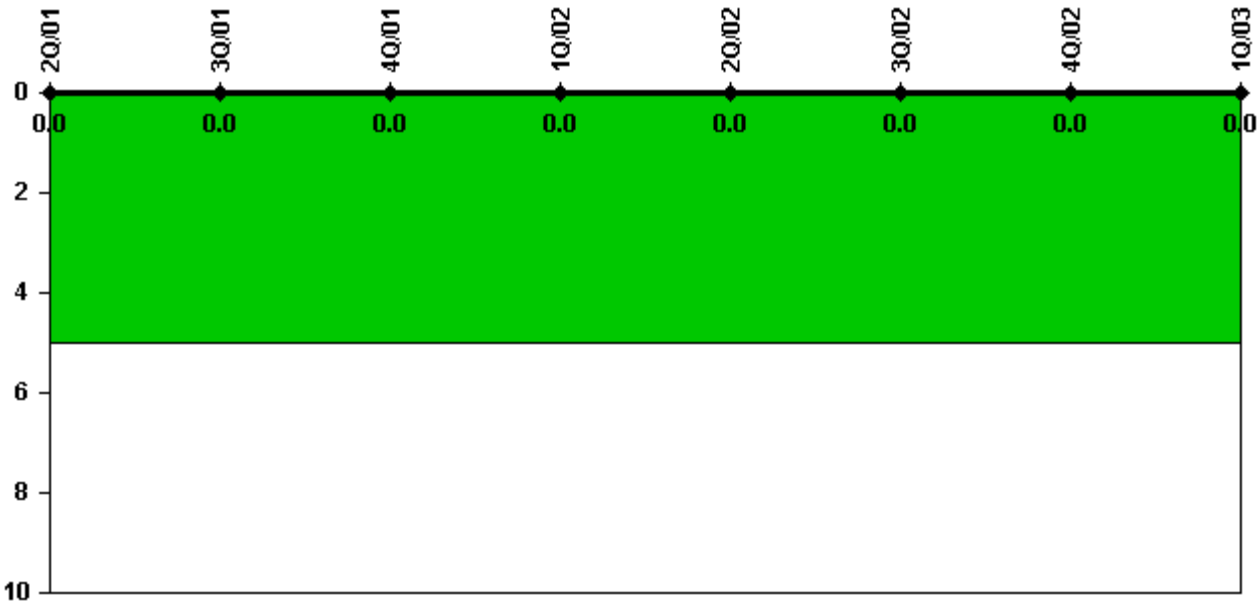
Thresholds: White > 1.5% Yellow > 5.0% Red > 10.0%

Notes

Safety System Unavailability, Residual Heat Removal System	2Q/01	3Q/01	4Q/01	1Q/02	2Q/02	3Q/02	4Q/02	1Q/03
Train 1								
Planned unavailable hours	2.64	23.30	4.30	2.60	23.90	2.80	1.30	3.00
Unplanned unavailable hours	0	0	0	0	0	0	0	0
Fault exposure hours	0	0	0	0	0	0	0	0
Effective Reset hours	0	0	0	0	0	0	0	0
Required hours	2183.00	2208.00	1994.20	2160.00	2183.00	2208.00	2209.00	1974.90
Train 2								
Planned unavailable hours	0.52	27.70	1.40	24.90	17.20	25.50	1.40	1.70
Unplanned unavailable hours	0	0	0	0	0	0	0	0
Fault exposure hours	0	0	0	0	0	0	0	0
Effective Reset hours	0	0	0	0	0	0	0	0
Required hours	2183.00	2208.00	1994.20	2160.00	2183.00	2208.00	2209.00	1974.90
Indicator value	0.2%	0.3%	0.3%	0.3%	0.4%	0.5%	0.5%	0.5%

Licensee Comments: none

Safety System Functional Failures (PWR)



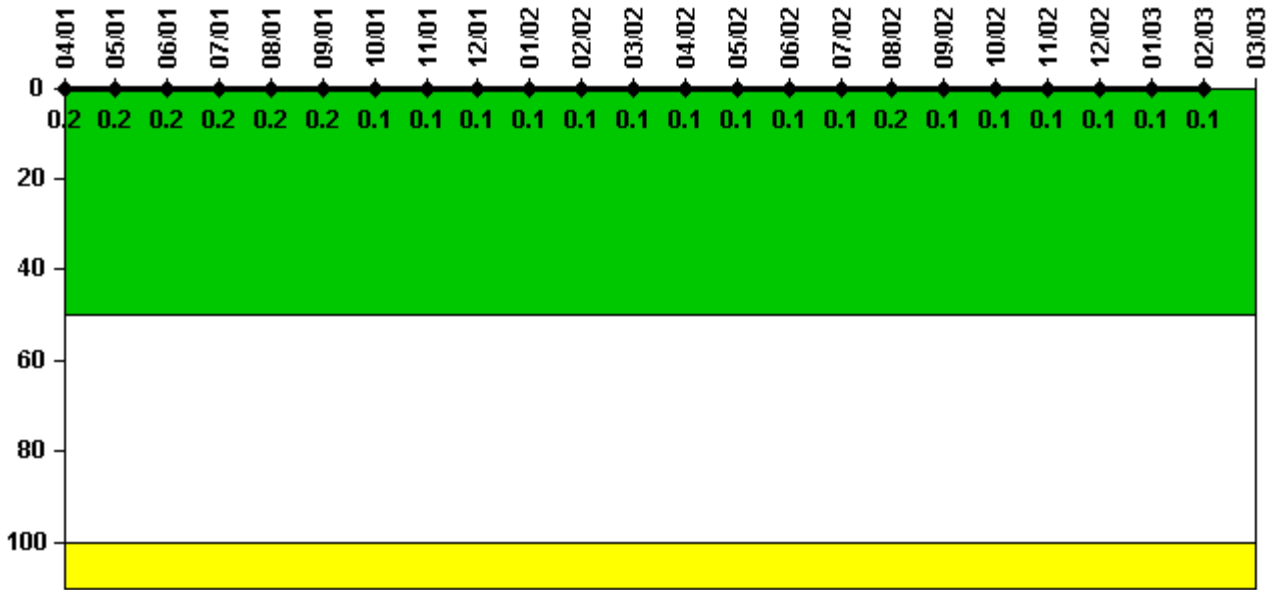
Thresholds: White > 5.0

Notes

Safety System Functional Failures (PWR)	2Q/01	3Q/01	4Q/01	1Q/02	2Q/02	3Q/02	4Q/02	1Q/03
Safety System Functional Failures	0	0	0	0	0	0	0	0
Indicator value	0	0	0	0	0	0	0	0

Licensee Comments: none

Reactor Coolant System Activity



Thresholds: White > 50.0 Yellow > 100.0

Notes

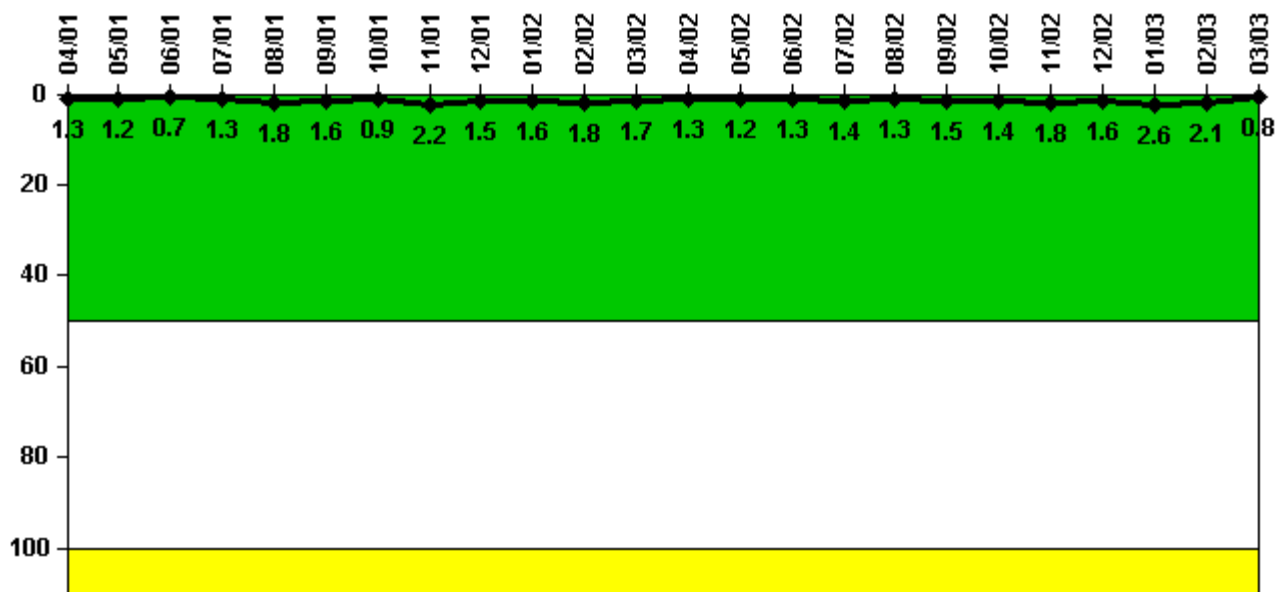
Reactor Coolant System Activity	4/01	5/01	6/01	7/01	8/01	9/01	10/01	11/01	12/01	1/02	2/02	3/02
Maximum activity	0.001520	0.001610	0.001640	0.001630	0.001630	0.001840	0.000565	0.000772	0.000910	0.000871	0.000953	0.000989
Technical specification limit	1.0	1.0	1.0	1.0	1.0	1.0	1.0	1.0	1.0	1.0	1.0	1.0
Indicator value	0.2	0.2	0.2	0.2	0.2	0.2	0.1	0.1	0.1	0.1	0.1	0.1

Reactor Coolant System Activity	4/02	5/02	6/02	7/02	8/02	9/02	10/02	11/02	12/02	1/03	2/03	3/03
Maximum activity	0.001020	0.001130	0.001170	0.001180	0.002020	0.001200	0.001240	0.001300	0.001160	0.001160	0.000787	N/A
Technical specification limit	1.0	1.0	1.0	1.0	1.0	1.0	1.0	1.0	1.0	1.0	1.0	1.0
Indicator value	0.1	0.1	0.1	0.1	0.2	0.1	0.1	0.1	0.1	0.1	0.1	N/A

Licensee Comments:

3/03: Unit 3 was shutdown for refueling on 3/1/03, commenced power ascension to 100% on 2/28/03, and continued power ascension through 3/31/03.

Reactor Coolant System Leakage



Thresholds: White > 50.0 Yellow > 100.0

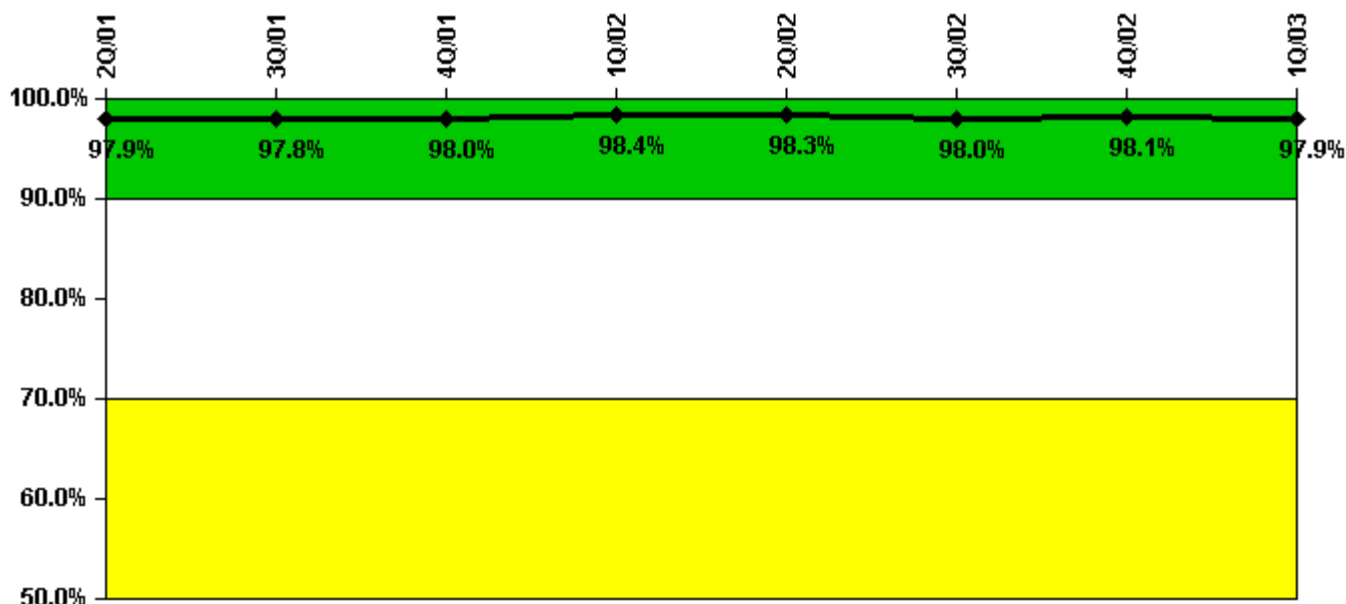
Notes

Reactor Coolant System Leakage	4/01	5/01	6/01	7/01	8/01	9/01	10/01	11/01	12/01	1/02	2/02	3/02
Maximum leakage	0.130	0.120	0.070	0.130	0.180	0.160	0.090	0.220	0.150	0.160	0.180	0.170
Technical specification limit	10.0	10.0	10.0	10.0	10.0	10.0	10.0	10.0	10.0	10.0	10.0	10.0
Indicator value	1.3	1.2	0.7	1.3	1.8	1.6	0.9	2.2	1.5	1.6	1.8	1.7

Reactor Coolant System Leakage	4/02	5/02	6/02	7/02	8/02	9/02	10/02	11/02	12/02	1/03	2/03	3/03
Maximum leakage	0.130	0.120	0.130	0.140	0.130	0.150	0.140	0.180	0.160	0.260	0.210	0.080
Technical specification limit	10.0	10.0	10.0	10.0	10.0	10.0	10.0	10.0	10.0	10.0	10.0	10.0
Indicator value	1.3	1.2	1.3	1.4	1.3	1.5	1.4	1.8	1.6	2.6	2.1	0.8

Licensee Comments: none

Drill/Exercise Performance



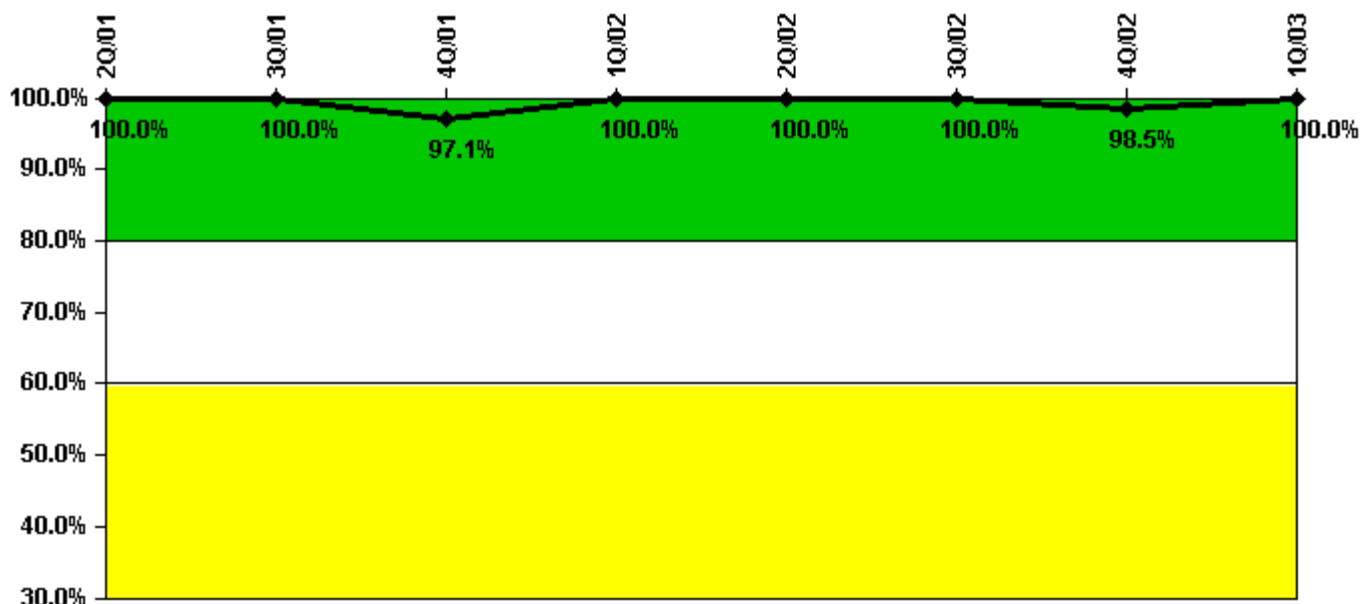
Thresholds: White < 90.0% Yellow < 70.0%

Notes

Drill/Exercise Performance	2Q/01	3Q/01	4Q/01	1Q/02	2Q/02	3Q/02	4Q/02	1Q/03
Successful opportunities	56.0	41.0	40.0	46.0	38.0	39.0	37.0	68.0
Total opportunities	57.0	42.0	40.0	49.0	38.0	40.0	37.0	70.0
Indicator value	97.9%	97.8%	98.0%	98.4%	98.3%	98.0%	98.1%	97.9%

Licensee Comments: none

ERO Drill Participation



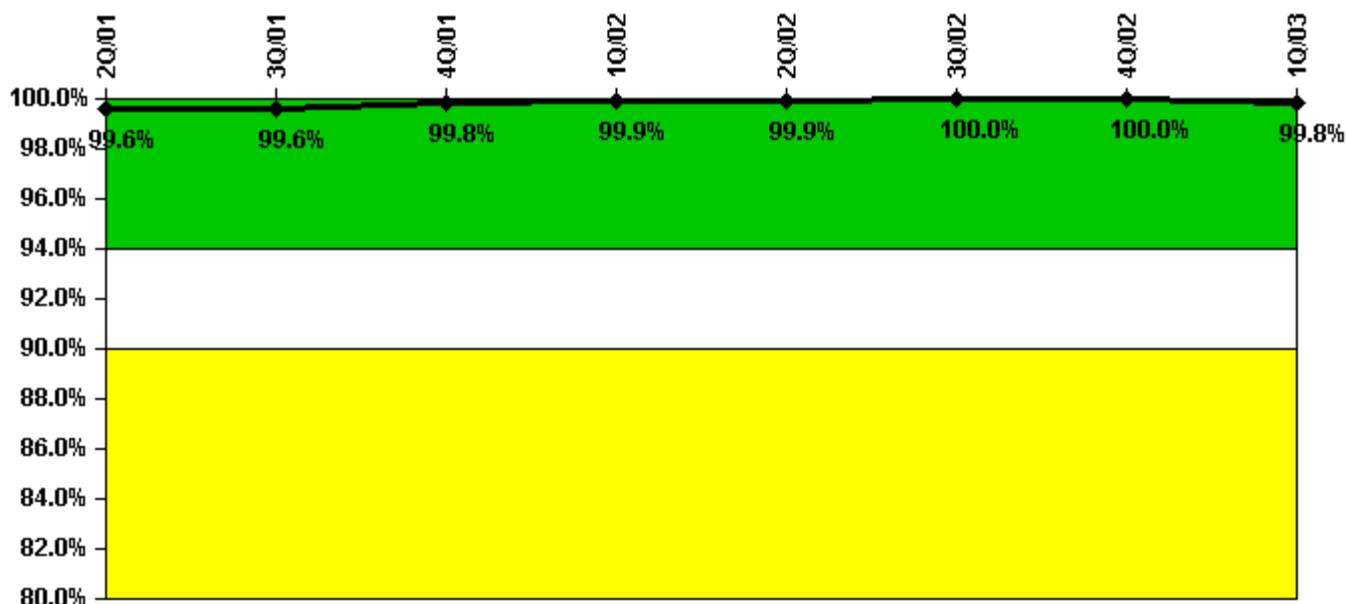
Thresholds: White < 80.0% Yellow < 60.0%

Notes

ERO Drill Participation	2Q/01	3Q/01	4Q/01	1Q/02	2Q/02	3Q/02	4Q/02	1Q/03
Participating Key personnel	69.0	67.0	67.0	70.0	67.0	66.0	65.0	67.0
Total Key personnel	69.0	67.0	69.0	70.0	67.0	66.0	66.0	67.0
Indicator value	100.0%	100.0%	97.1%	100.0%	100.0%	100.0%	98.5%	100.0%

Licensee Comments: none

Alert & Notification System



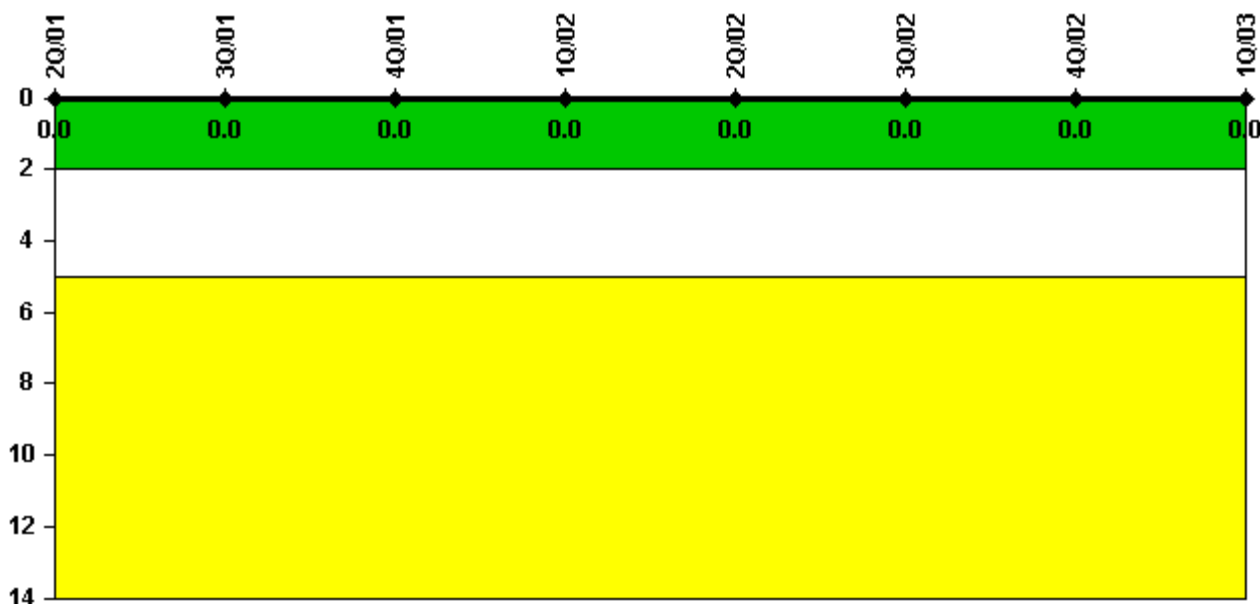
Thresholds: White < 94.0% Yellow < 90.0%

Notes

Alert & Notification System	2Q/01	3Q/01	4Q/01	1Q/02	2Q/02	3Q/02	4Q/02	1Q/03
Successful siren-tests	329	281	376	329	376	329	376	279
Total sirens-tests	329	282	376	329	376	329	376	282
Indicator value	99.6%	99.6%	99.8%	99.9%	99.9%	100.0%	100.0%	99.8%

Licensee Comments: none

Occupational Exposure Control Effectiveness



Thresholds: White > 2.0 Yellow > 5.0

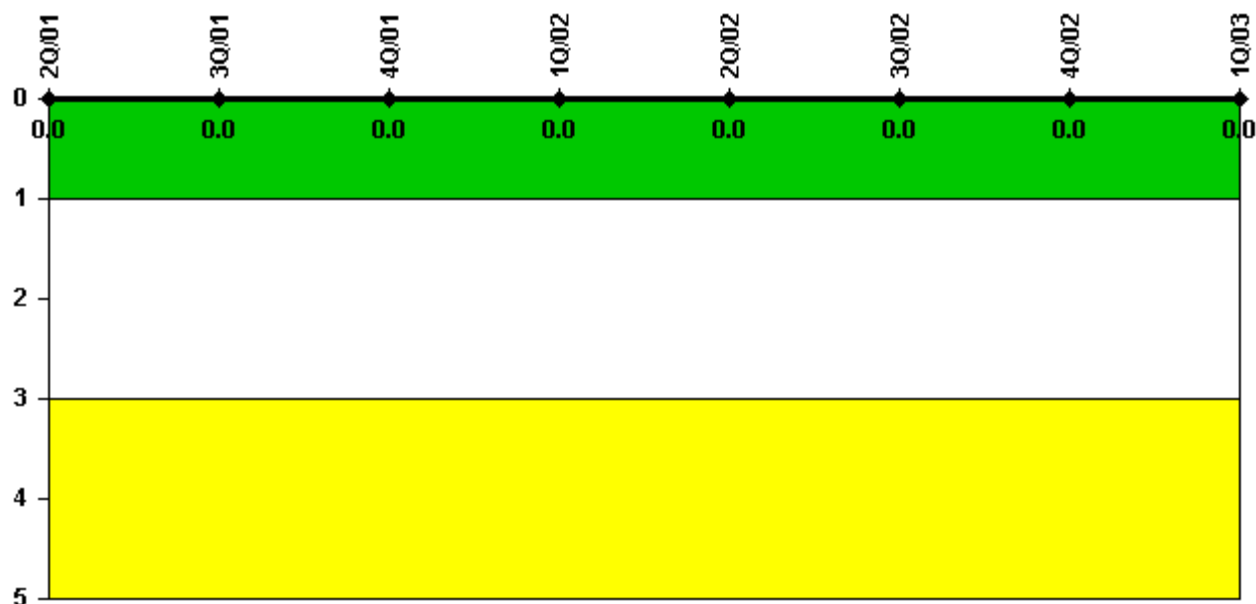
Notes

Occupational Exposure Control Effectiveness	2Q/01	3Q/01	4Q/01	1Q/02	2Q/02	3Q/02	4Q/02	1Q/03
High radiation area occurrences	0	0	0	0	0	0	0	0
Very high radiation area occurrences	0	0	0	0	0	0	0	0
Unintended exposure occurrences	0	0	0	0	0	0	0	0
Indicator value	0	0	0	0	0	0	0	0

Licensee Comments:

1Q/03: On 3/25/03 at 0600, an HP Technician was issued a Locked High Radiation Area (LHRA) key at the HP office. At 0730 the HP Technician reported to HP supervision that the LHRA key was missing. The HP Technician had not used the LHRA key while it was issued to him. All LHRA's were immediately verified as locked and remained guarded until lock cores were replaced. At 1300, a Security Guard notified HP that Plant Security had found the LHRA key at 0605 on the floor at the HP office and returned the key to HP. Security did not notify HP at the time of finding the key due to the physical similarity of the key to other Security keys. Security stated and documented that the key remained under their control from the time it was found and that no areas were accessed by use of the key. The LHRA doors were locked at all times during this event and the key was under administrative control of the Security Guard. The key had been unaccounted for by HP, however it was recovered and under Security's administrative control 5 minutes from the time the HP Technician had lost it. A FAQ has been submitted to clarify whether or not this event impacts the Occupational Exposure Performance Indicator with regard to administrative key control

RETS/ODCM Radiological Effluent



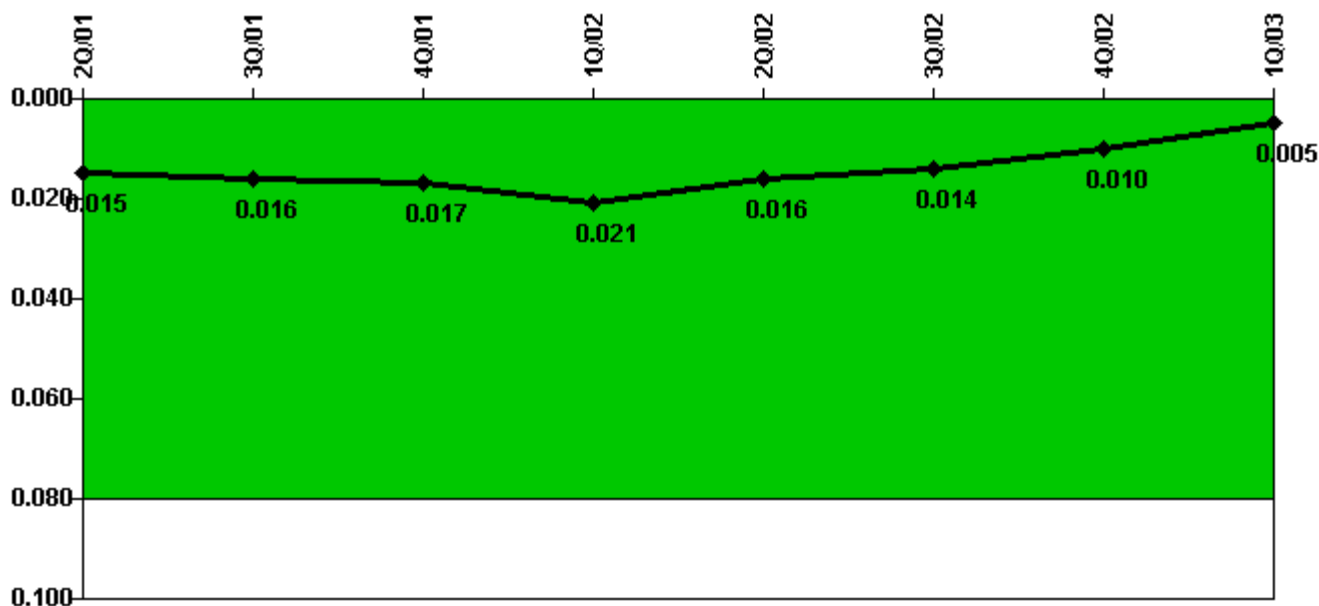
Thresholds: White > 1.0 Yellow > 3.0

Notes

RETS/ODCM Radiological Effluent	2Q/01	3Q/01	4Q/01	1Q/02	2Q/02	3Q/02	4Q/02	1Q/03
RETS/ODCM occurrences	0	0	0	0	0	0	0	0
Indicator value	0	0	0	0	0	0	0	0

Licensee Comments: none

Protected Area Security Performance Index



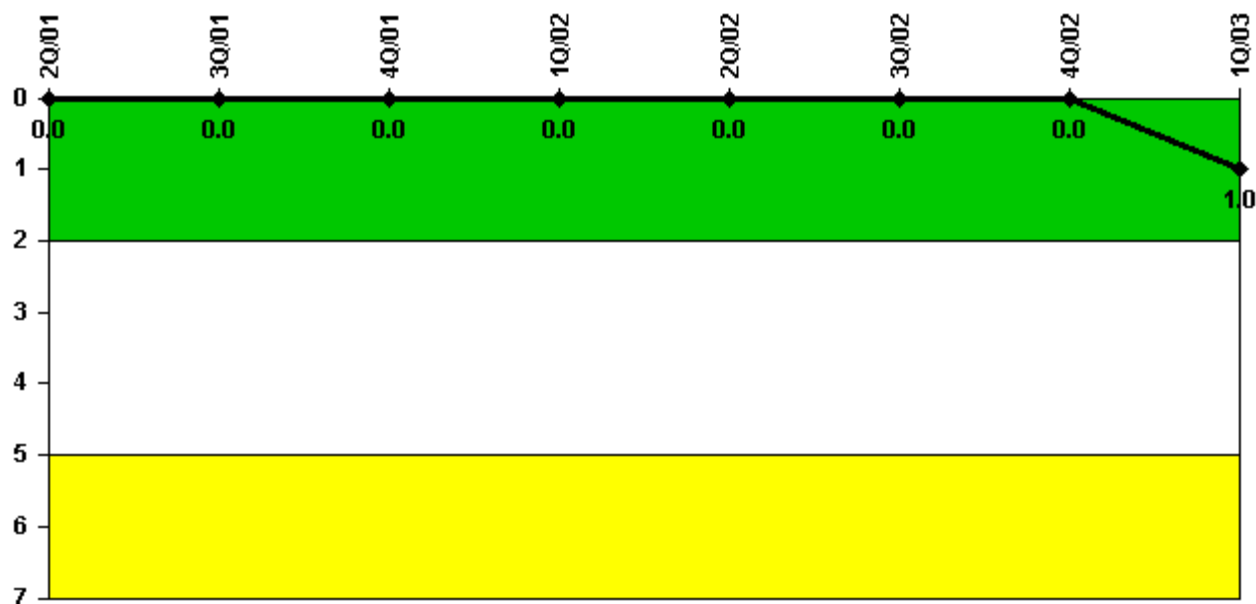
Thresholds: White > 0.080

Notes

Protected Area Security Performance Index	2Q/01	3Q/01	4Q/01	1Q/02	2Q/02	3Q/02	4Q/02	1Q/03
IDS compensatory hours	311.80	108.60	148.00	156.70	122.20	40.70	10.50	0
CCTV compensatory hours	0	0	0	0	0	0	0	0
IDS normalization factor	1.95	1.95	1.95	1.95	1.95	1.95	1.95	1.95
CCTV normalization factor	2.2	2.2	2.2	2.2	2.2	2.2	2.2	2.2
Index Value	0.015	0.016	0.017	0.021	0.016	0.014	0.010	0.005

Licensee Comments: none

Personnel Screening Program



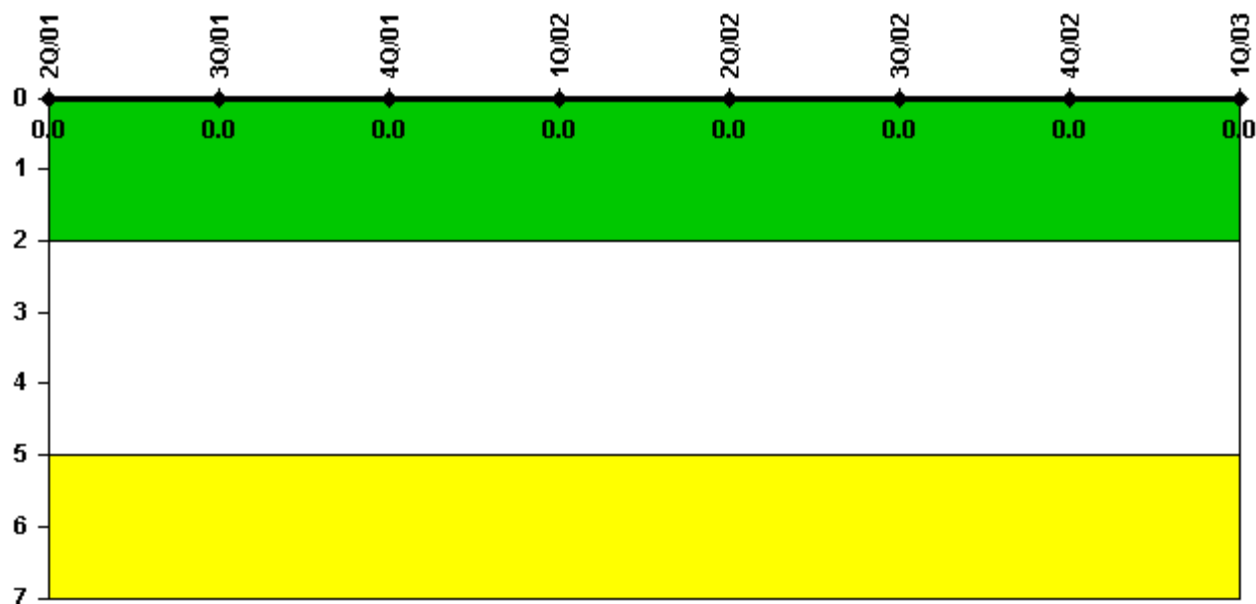
Thresholds: White > 2.0 Yellow > 5.0

Notes

Personnel Screening Program	2Q/01	3Q/01	4Q/01	1Q/02	2Q/02	3Q/02	4Q/02	1Q/03
Program failures	0	0	0	0	0	0	0	1
Indicator value	0	0	0	0	0	0	0	1

Licensee Comments: none

FFD/Personnel Reliability



Thresholds: White > 2.0 Yellow > 5.0

Notes

FFD/Personnel Reliability	2Q/01	3Q/01	4Q/01	1Q/02	2Q/02	3Q/02	4Q/02	1Q/03
Program Failures	0	0	0	0	0	0	0	0
Indicator value	0	0	0	0	0	0	0	0

Licensee Comments: none

▲ [PI Summary](#) | [Inspection Findings Summary](#) | [Reactor Oversight Process](#)

Last Modified: April 22, 2003