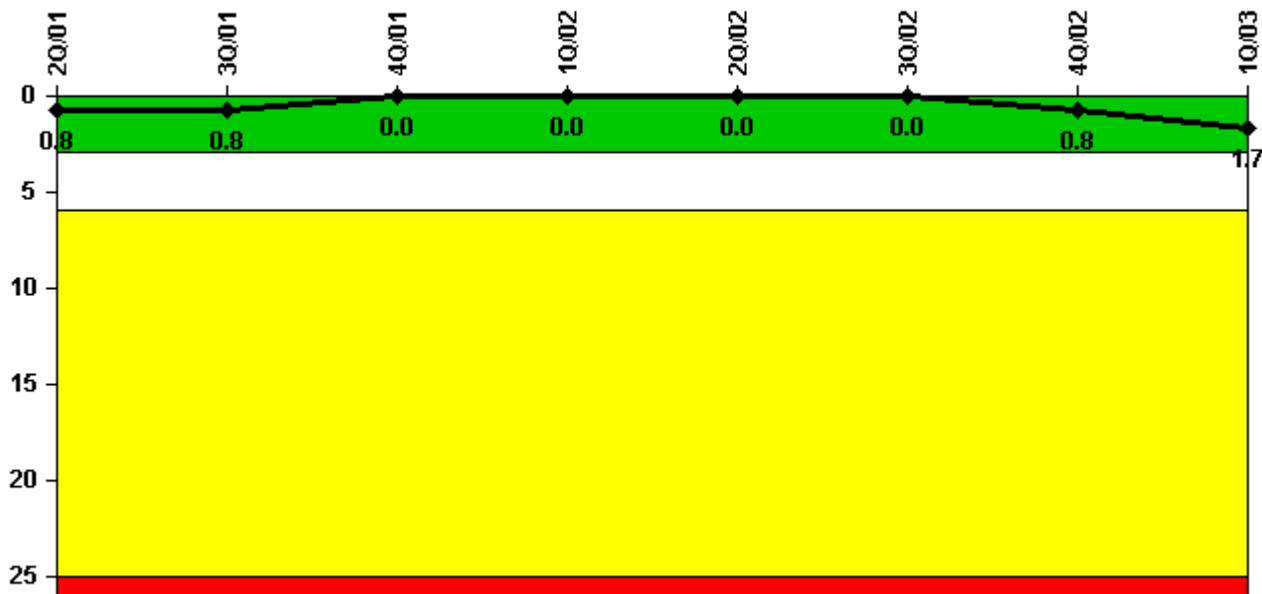


# South Texas 1

## 1Q/2003 Performance Indicators

Licensee's General Comments: none

### Unplanned Scrams per 7000 Critical Hrs



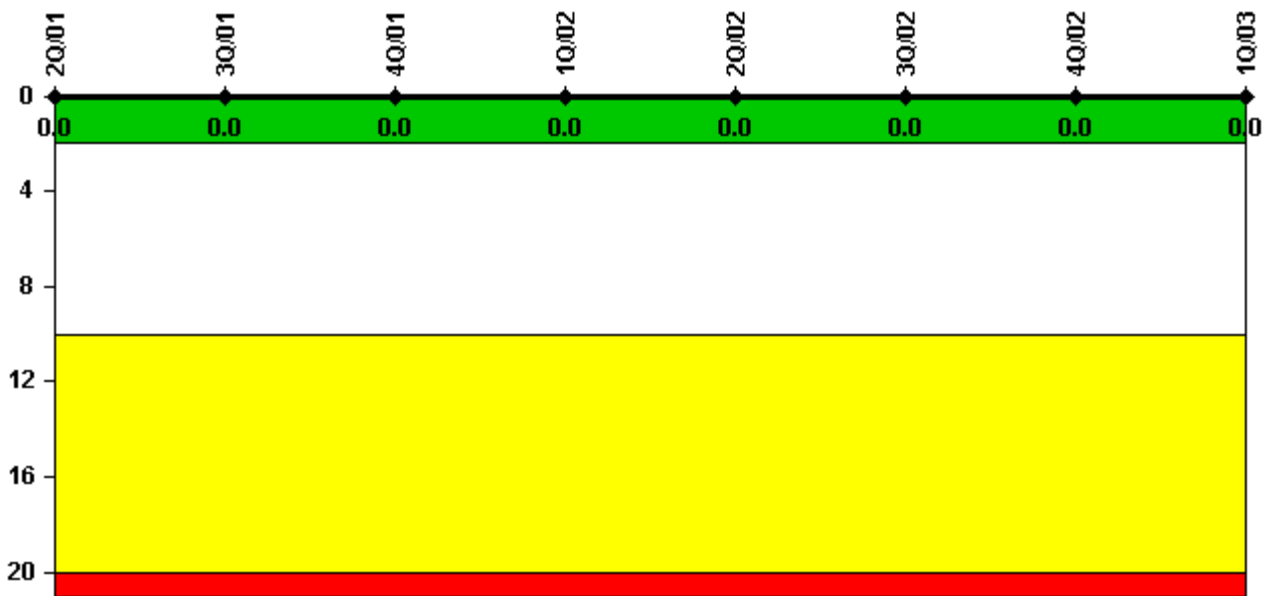
Thresholds: White > 3.0 Yellow > 6.0 Red > 25.0

### Notes

Unplanned Scrams per 7000 Critical Hrs	2Q/01	3Q/01	4Q/01	1Q/02	2Q/02	3Q/02	4Q/02	1Q/03
Unplanned scrams	0	0	0	0	0	0	1.0	1.0
Critical hours	2183.0	2208.0	1719.4	2160.0	2183.0	2208.0	2028.2	1970.3
Indicator value	0.8	0.8	0	0	0	0	0.8	1.7

Licensee Comments: none

### Scrams with Loss of Normal Heat Removal



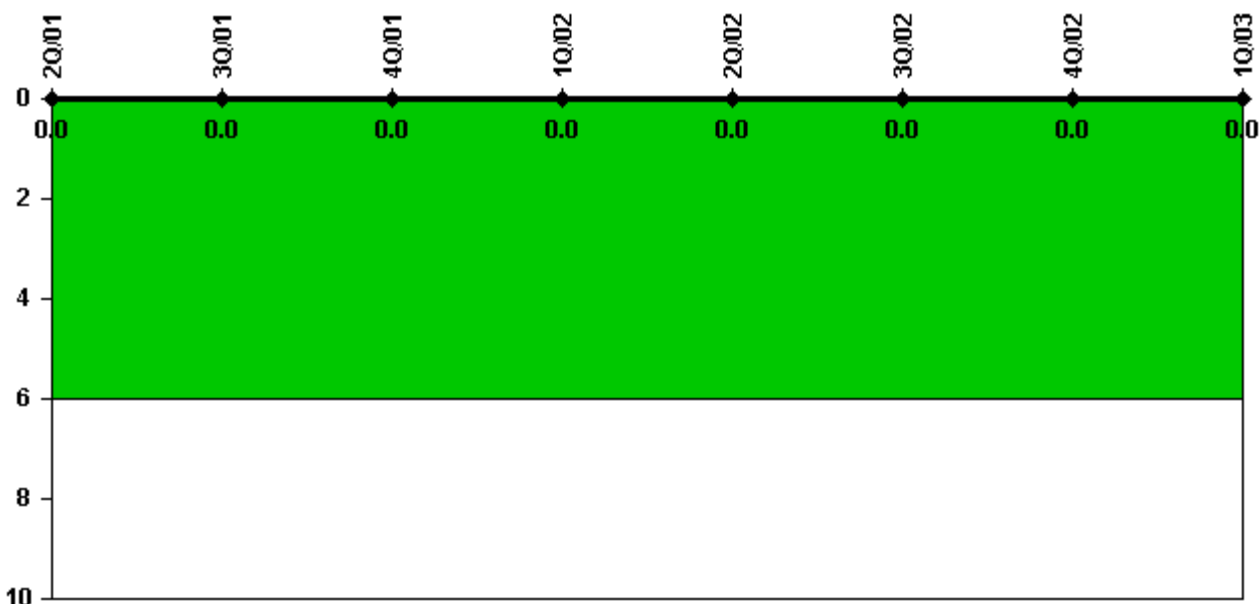
Thresholds: White > 2.0 Yellow > 10.0 Red > 20.0

#### Notes

Scrams with Loss of Normal Heat Removal	2Q/01	3Q/01	4Q/01	1Q/02	2Q/02	3Q/02	4Q/02	1Q/03
Scrams	0	0	0	0	0	0	0	0
Indicator value	0	0	0	0	0	0	0	0

Licensee Comments: none

### Unplanned Power Changes per 7000 Critical Hrs



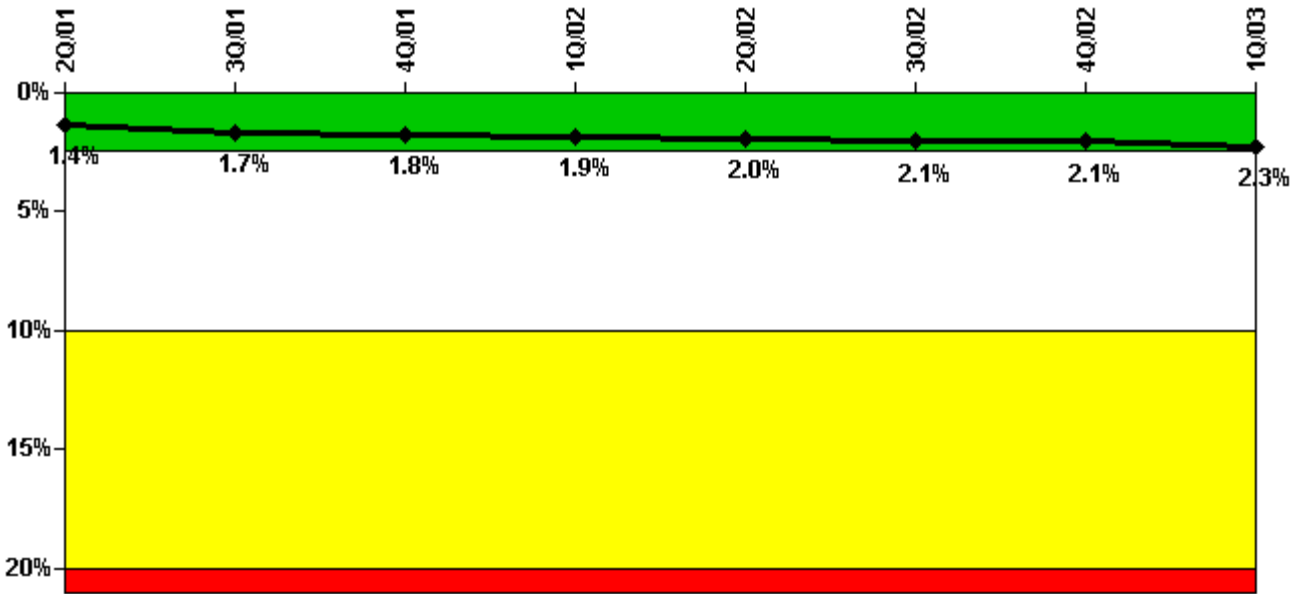
Thresholds: White > 6.0

#### Notes

Unplanned Power Changes per 7000 Critical Hrs	2Q/01	3Q/01	4Q/01	1Q/02	2Q/02	3Q/02	4Q/02	1Q/03
Unplanned power changes	0	0	0	0	0	0	0	0
Critical hours	2183.0	2208.0	1719.4	2160.0	2183.0	2208.0	2028.2	1970.3
Indicator value	0	0	0	0	0	0	0	0

Licensee Comments: none

### Safety System Unavailability, Emergency AC Power, >2EDG



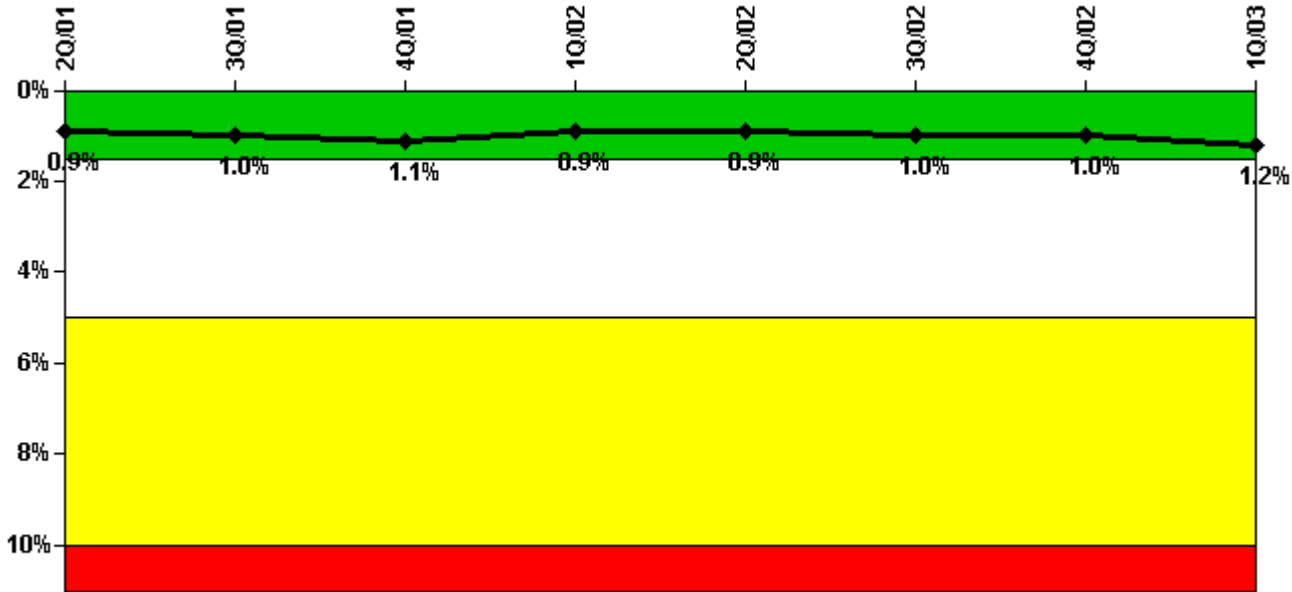
Thresholds: White > 2.5% Yellow > 10.0% Red > 20.0%

**Notes**

Safety System Unavailability, Emergency AC Power, >2EDG	2Q/01	3Q/01	4Q/01	1Q/02	2Q/02	3Q/02	4Q/02	1Q/03
<b>Train 1</b>								
Planned unavailable hours	133.40	14.20	16.20	102.25	79.48	45.38	11.25	28.17
Unplanned unavailable hours	0	0	0	0	0	0	14.52	0
Fault exposure hours	0	0	0	0	0	0	0	0
Effective Reset hours	0	0	0	0	0	0	0	0
Required hours	2183.00	2208.00	2209.00	2160.00	2183.00	2208.00	2209.00	2160.00
<b>Train 2</b>								
Planned unavailable hours	69.90	12.20	8.90	72.67	26.33	45.92	7.83	153.85
Unplanned unavailable hours	0	0	0	9.55	0	0	0	25.45
Fault exposure hours	0	0	0	0	0	0	0	0
Effective Reset hours	0	0	0	0	0	0	0	0
Required hours	2183.00	2208.00	2209.00	2160.00	2183.00	2208.00	2209.00	2160.00
<b>Train 3</b>								
Planned unavailable hours	108.88	122.00	86.70	16.32	133.99	16.65	13.67	7.90
Unplanned unavailable hours	0	90.90	0	0	0	0	0.55	0
Fault exposure hours	0	0	0	0	0	0	0	0
Effective Reset hours	0	0	0	0	0	0	0	0
Required hours	2183.00	2208.00	2209.00	2160.00	2183.00	2208.00	2209.00	2160.00
<b>Indicator value</b>	1.4%	1.7%	1.8%	1.9%	2.0%	2.1%	2.1%	2.3%

Licensee Comments: none

### Safety System Unavailability, High Pressure Injection System (HPSI)



Thresholds: White > 1.5% Yellow > 5.0% Red > 10.0%

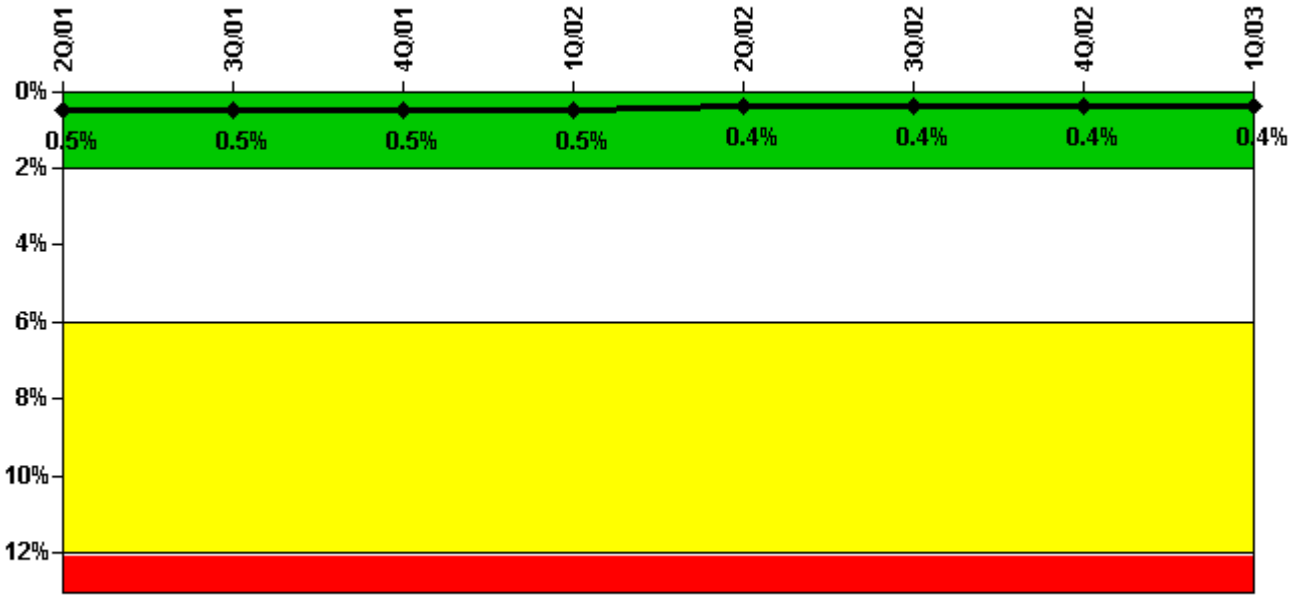
#### Notes

Safety System Unavailability, High Pressure Injection System (HPSI)	2Q/01	3Q/01	4Q/01	1Q/02	2Q/02	3Q/02	4Q/02	1Q/03
<b>Train 1</b>								
Planned unavailable hours	0.80	16.30	29.30	0.75	0	26.50	14.55	44.00
Unplanned unavailable hours	0	0	0	0	0	0	0	0
Fault exposure hours	0	0	0	0	0	0	0	0
Effective Reset hours	0	0	0	0	0	0	0	0
Required hours	2183.00	2208.00	1719.40	2160.00	2183.00	2208.00	2209.00	2026.97
<b>Train 2</b>								
Planned unavailable hours	60.40	11.30	11.90	15.10	0.55	0.30	6.48	86.75
Unplanned unavailable hours	0	0	0	0	0	0	0	0
Fault exposure hours	0	0	0	0	0	0	0	0
Effective Reset hours	0	0	0	0	0	0	0	0
Required hours	2183.00	2208.00	1719.40	2160.00	2183.00	2208.00	2209.00	2026.97
<b>Train 3</b>								
Planned unavailable hours	0	74.30	0	14.58	22.36	70.80	13.94	35.75
Unplanned unavailable hours	0	0.30	0	0	0	0	2.92	0
Fault exposure hours	0	0	0	0	0	0	0	0
Effective Reset hours	0	0	0	0	0	0	0	0
Required hours	2183.00	2208.00	1719.40	2160.00	2183.00	2208.00	2209.00	2026.97

Indicator value	0.9%	1.0%	1.1%	0.9%	0.9%	1.0%	1.0%	1.2%
-----------------	------	------	------	------	------	------	------	------

Licensee Comments: none

### Safety System Unavailability, Heat Removal System (AFW)



Thresholds: White > 2.0% Yellow > 6.0% Red > 12.0%

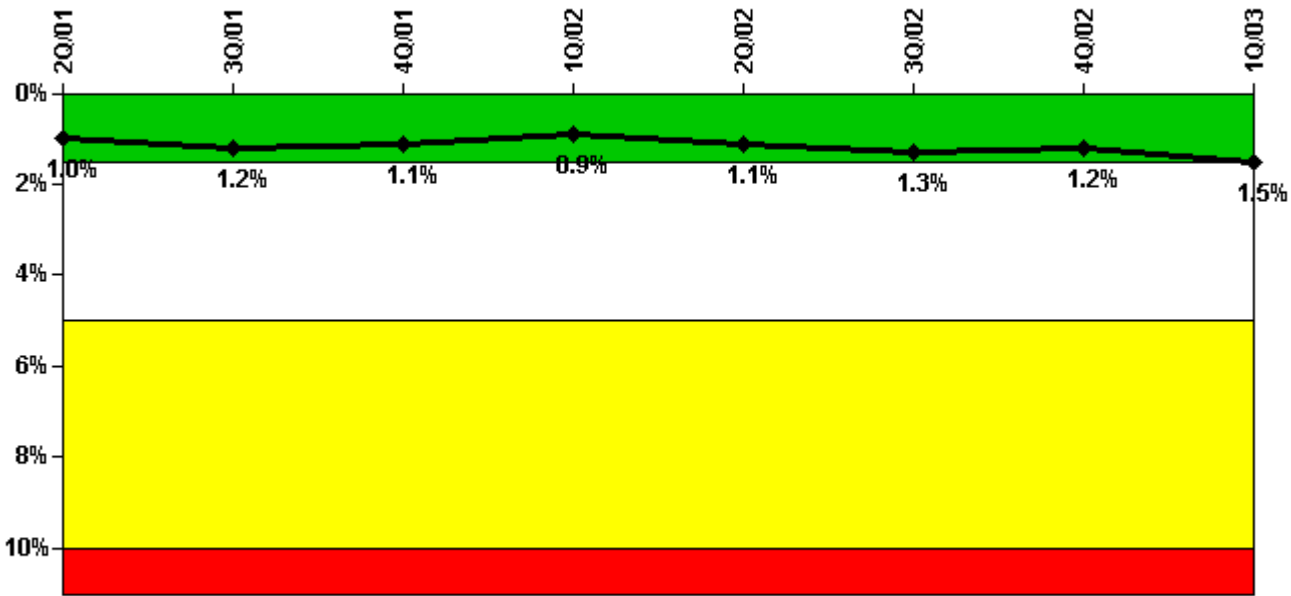
### Notes

Safety System Unavailability, Heat Removal System (AFW)	2Q/01	3Q/01	4Q/01	1Q/02	2Q/02	3Q/02	4Q/02	1Q/03
<b>Train 1</b>								
Planned unavailable hours	10.90	6.80	0	5.85	13.82	0	0	28.63
Unplanned unavailable hours	0	0	0	0	0	0	0	0
Fault exposure hours	0	0	0	0	0	0	0	0
Effective Reset hours	0	0	0	0	0	0	0	0
Required hours	2183.00	2208.00	1719.40	2160.00	2183.00	2208.00	2209.00	2024.90
<b>Train 2</b>								
Planned unavailable hours	0	10.00	0	24.12	12.46	0	0	18.50
Unplanned unavailable hours	0	0	0	0	0	0	0	0
Fault exposure hours	0	0	0	0	0	0	0	0
Effective Reset hours	0	0	0	0	0	0	0	0
Required hours	2192.00	2208.00	1719.40	2160.00	2183.00	2208.00	2209.00	2024.90
<b>Train 3</b>								
Planned unavailable hours	36.17	12.10	14.30	8.37	0	8.97	0	24.49
Unplanned unavailable hours	0	0.30	0	0	0	0	2.92	0

Fault exposure hours	0	0	0	0	0	0	0	0
Effective Reset hours	0	0	0	0	0	0	0	0
Required hours	2183.00	2208.00	1719.40	2160.00	2183.00	2208.00	2209.00	2024.90
<b>Train 4</b>								
Planned unavailable hours	7.25	12.00	10.60	9.30	0	18.75	0	12.34
Unplanned unavailable hours	0	0	0	0	0	0	0	0
Fault exposure hours	0	0	0	0	0	0	0	0
Effective Reset hours	0	0	0	0	0	0	0	0
Required hours	2183.00	2208.00	1719.40	2160.00	2183.00	2208.00	2209.00	2024.90
<b>Indicator value</b>	<b>0.5%</b>	<b>0.5%</b>	<b>0.5%</b>	<b>0.5%</b>	<b>0.4%</b>	<b>0.4%</b>	<b>0.4%</b>	<b>0.4%</b>

Licensee Comments: none

### Safety System Unavailability, Residual Heat Removal System



Thresholds: White > 1.5% Yellow > 5.0% Red > 10.0%

### Notes

Safety System Unavailability, Residual Heat Removal System	2Q/01	3Q/01	4Q/01	1Q/02	2Q/02	3Q/02	4Q/02	1Q/03
<b>Train 1</b>								
Planned unavailable hours	0.80	83.00	35.80	13.60	76.00	16.23	27.88	80.63
Unplanned unavailable hours	0	0	0	0	42.18	0	0	0
Fault exposure hours	0	0	0	0	0	0	0	0
Effective Reset hours	0	0	0	0	0	0	0	0

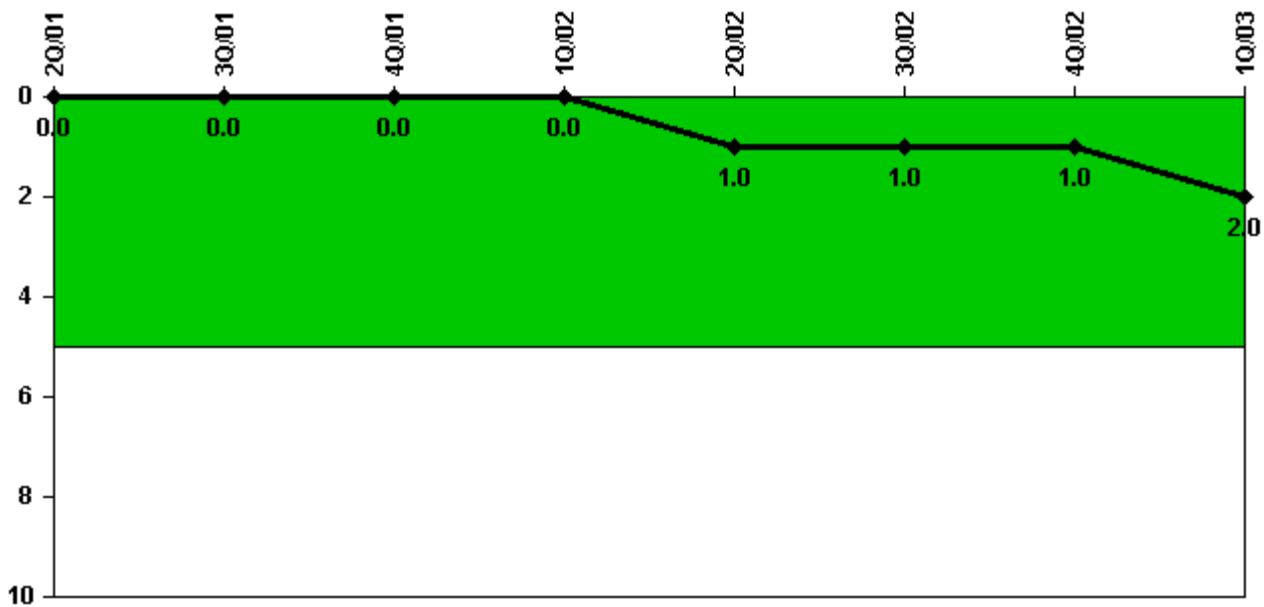
Required hours	2183.00	2208.00	2185.90	2160.00	2183.00	2208.00	2209.00	2160.00
<b>Train 2</b>								
Planned unavailable hours	0	0.80	11.80	0.43	53.50	0.30	0.65	99.64
Unplanned unavailable hours	0	0	0	0	0	0	0	0
Fault exposure hours	0	0	0	0	0	0	0	0
Effective Reset hours	0	0	0	0	0	0	0	0
Required hours	2183.00	2208.00	2185.90	2160.00	2183.00	2208.00	2209.00	2160.00
<b>Train 3</b>								
Planned unavailable hours	16.45	74.30	0	21.58	81.50	70.80	0.42	103.50
Unplanned unavailable hours	0	0.30	0	0	0	0	2.92	0
Fault exposure hours	0	0	0	0	0	0	0	0
Effective Reset hours	0	0	0	0	0	0	0	0
Required hours	2183.00	2208.00	2185.90	2160.00	2183.00	2208.00	2209.00	2160.00
<b>Indicator value</b>	<b>1.0%</b>	<b>1.2%</b>	<b>1.1%</b>	<b>0.9%</b>	<b>1.1%</b>	<b>1.3%</b>	<b>1.2%</b>	<b>1.5%</b>

Licensee Comments:

- 1Q/03: Corrected math error (4/01) and minor overcount of unavailable hours (8/01) in prior quarters.
- 3Q/01: 8/01 data revised due to minor overcount of unavailable hours.
- 3Q/01: 8/01 data revised due to minor overcount of unavailable hours.
- 3Q/01: 8/01 data revised due to minor overcount of unavailable hours.
- 2Q/01: 4/01 Train 3 planned unavailable hours data revised due to math error.
- 2Q/01: 4/01 Train 3 planned unavailable hours data revised due to math error.



### Safety System Functional Failures (PWR)



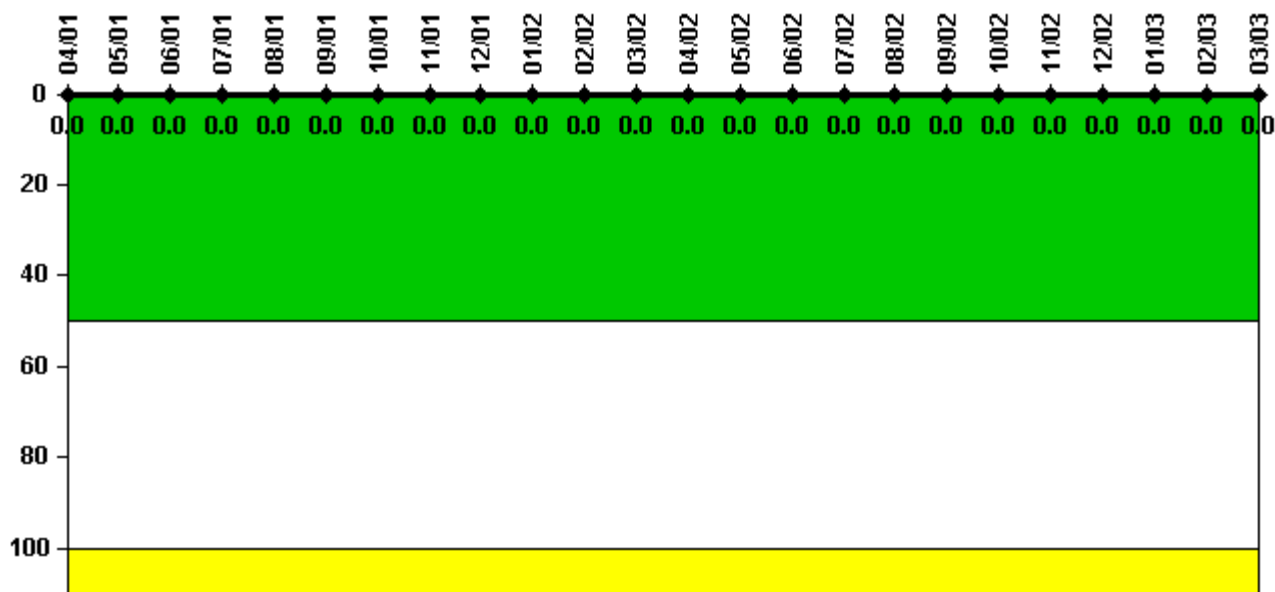
Thresholds: White > 5.0

#### Notes

Safety System Functional Failures (PWR)	2Q/01	3Q/01	4Q/01	1Q/02	2Q/02	3Q/02	4Q/02	1Q/03
Safety System Functional Failures	0	0	0	0	1	0	0	1
Indicator value	0	0	0	0	1	1	1	2

Licensee Comments: none

### Reactor Coolant System Activity



Thresholds: White > 50.0 Yellow > 100.0

#### Notes

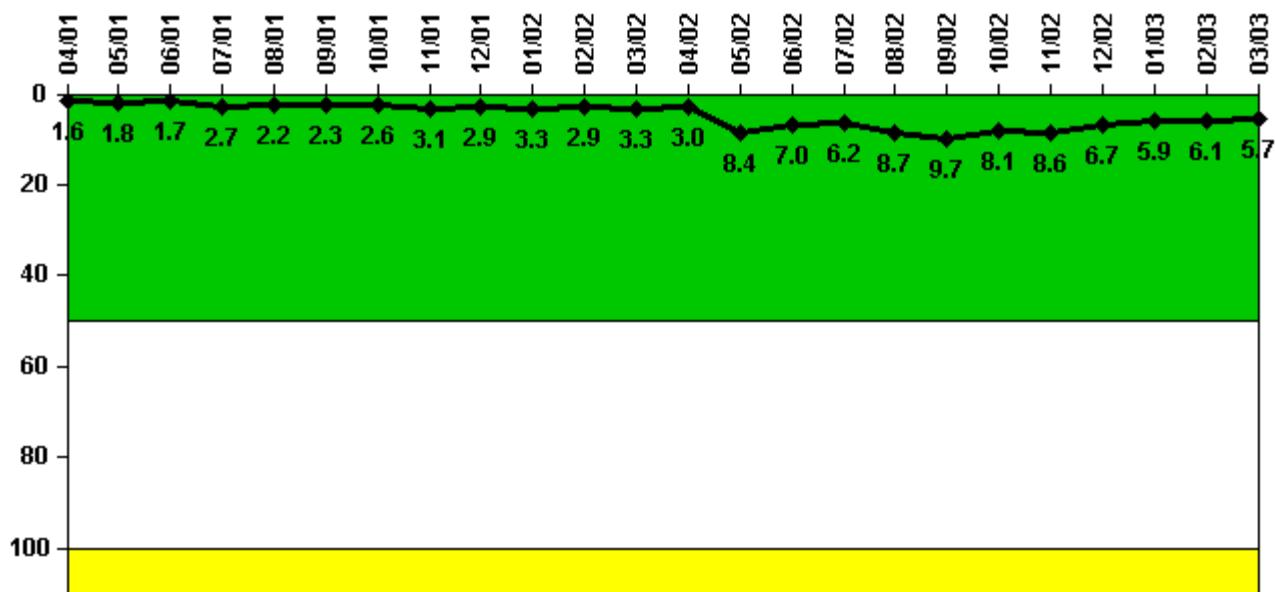
Reactor Coolant System Activity	4/01	5/01	6/01	7/01	8/01	9/01	10/01	11/01	12/01	1/02	2/02	3/02
Maximum activity	0.000221	0.000319	0.000222	0.000383	0.000374	0.000449	0.000077	0.000085	0.000083	0.000086	0.000083	0.000107
Technical specification limit	1.0	1.0	1.0	1.0	1.0	1.0	1.0	1.0	1.0	1.0	1.0	1.0
Indicator value	0	0	0	0	0	0	0	0	0	0	0	0

Reactor Coolant System Activity	4/02	5/02	6/02	7/02	8/02	9/02	10/02	11/02	12/02	1/03	2/03	3/03
Maximum activity	0.000093	0.000095	0.000092	0.000117	0.000102	0.000154	0.000109	0.000100	0.000114	0.000107	0.000111	0.000123
Technical specification limit	1.0	1.0	1.0	1.0	1.0	1.0	1.0	1.0	1.0	1.0	1.0	1.0
Indicator value	0	0	0	0	0	0	0	0	0	0	0	0

Licensee Comments: none

### Reactor Coolant System Leakage



Thresholds: White > 50.0 Yellow > 100.0

#### Notes

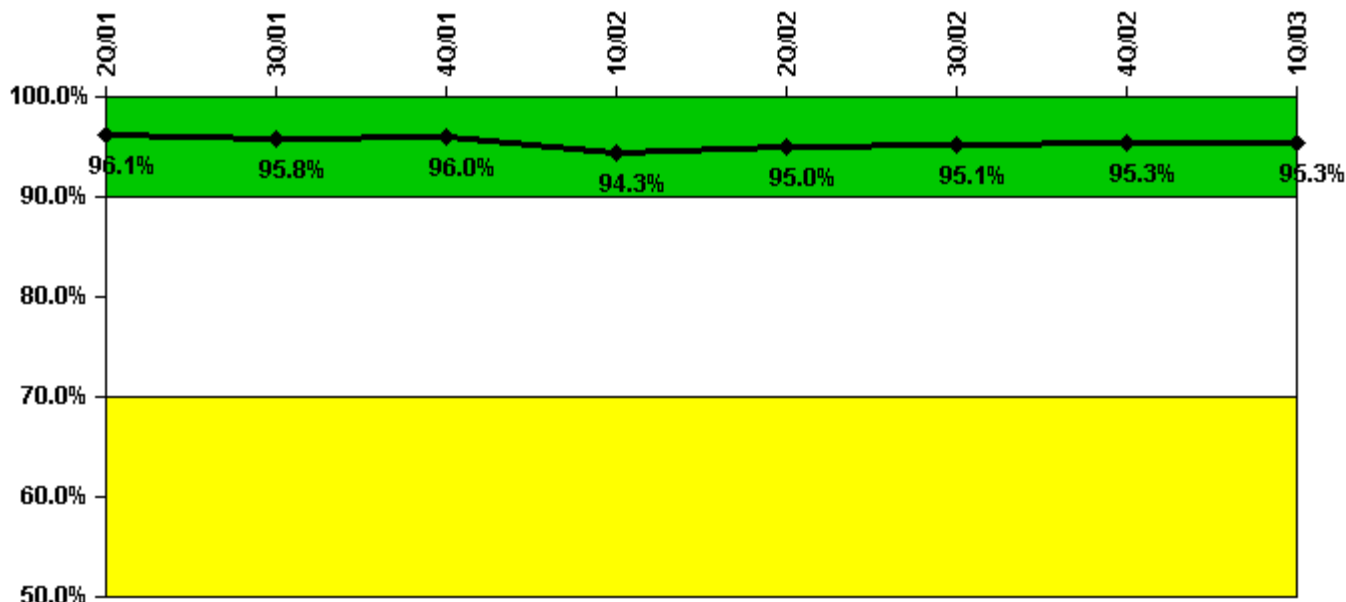
Reactor Coolant System Leakage	4/01	5/01	6/01	7/01	8/01	9/01	10/01	11/01	12/01	1/02	2/02	3/02
Maximum leakage	0.161	0.180	0.166	0.269	0.217	0.234	0.257	0.307	0.289	0.325	0.289	0.325
Technical specification limit	10.0	10.0	10.0	10.0	10.0	10.0	10.0	10.0	10.0	10.0	10.0	10.0
Indicator value	1.6	1.8	1.7	2.7	2.2	2.3	2.6	3.1	2.9	3.3	2.9	3.3

Reactor Coolant System Leakage	4/02	5/02	6/02	7/02	8/02	9/02	10/02	11/02	12/02	1/03	2/03	3/03
Maximum leakage	0.301	0.842	0.702	0.621	0.866	0.966	0.810	0.857	0.673	0.593	0.612	0.572
Technical specification limit	10.0	10.0	10.0	10.0	10.0	10.0	10.0	10.0	10.0	10.0	10.0	10.0
Indicator value	3.0	8.4	7.0	6.2	8.7	9.7	8.1	8.6	6.7	5.9	6.1	5.7

Licensee Comments: none

### Drill/Exercise Performance



Thresholds: White < 90.0% Yellow < 70.0%

#### Notes

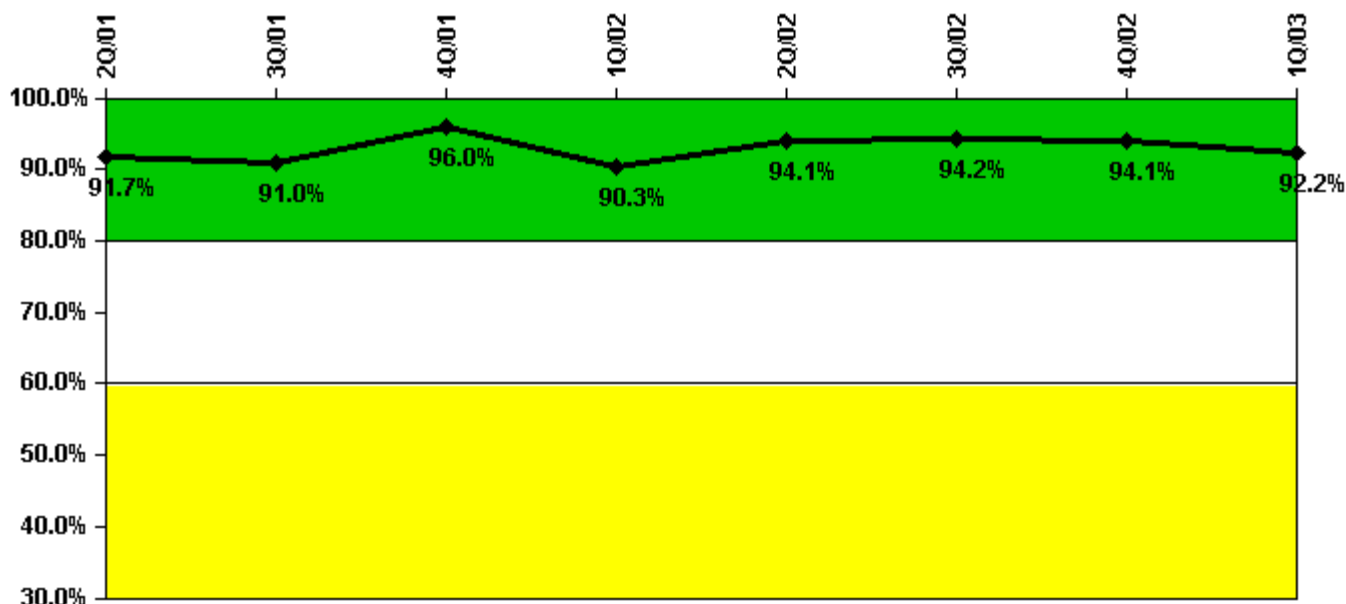
Drill/Exercise Performance	2Q/01	3Q/01	4Q/01	1Q/02	2Q/02	3Q/02	4Q/02	1Q/03
Successful opportunities	94.0	19.0	78.0	33.0	28.0	33.0	0	0
Total opportunities	100.0	20.0	80.0	37.0	28.0	34.0	0	0
Indicator value	96.1%	95.8%	96.0%	94.3%	95.0%	95.1%	95.3%	95.3%

#### Licensee Comments:

1Q/03: Drill/Exercise Performance corrected numbers for 9/2002. Previous submittal included quarterly total vs. monthly total.

3Q/02: Drill/Exercise Performance corrected numbers for 9/2002. Previous submittal included quarterly total vs. monthly total.

### ERO Drill Participation



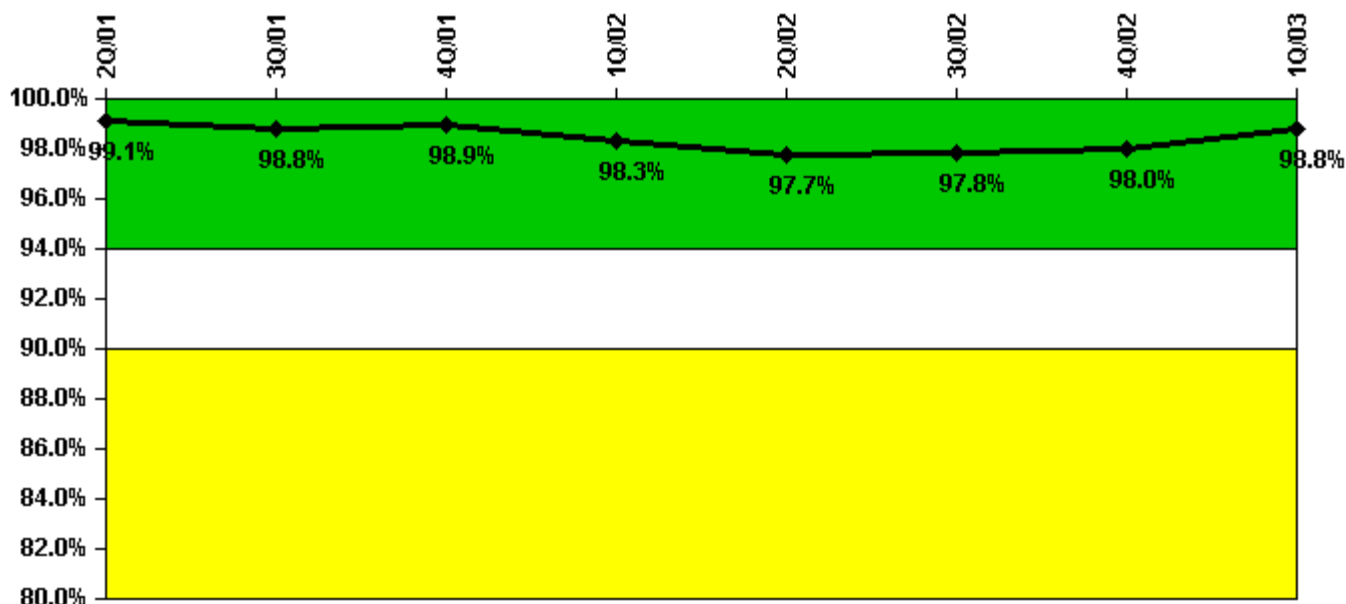
Thresholds: White < 80.0% Yellow < 60.0%

#### Notes

ERO Drill Participation	2Q/01	3Q/01	4Q/01	1Q/02	2Q/02	3Q/02	4Q/02	1Q/03
Participating Key personnel	111.0	111.0	120.0	112.0	111.0	113.0	111.0	107.0
Total Key personnel	121.0	122.0	125.0	124.0	118.0	120.0	118.0	116.0
Indicator value	91.7%	91.0%	96.0%	90.3%	94.1%	94.2%	94.1%	92.2%

Licensee Comments: none

### Alert & Notification System



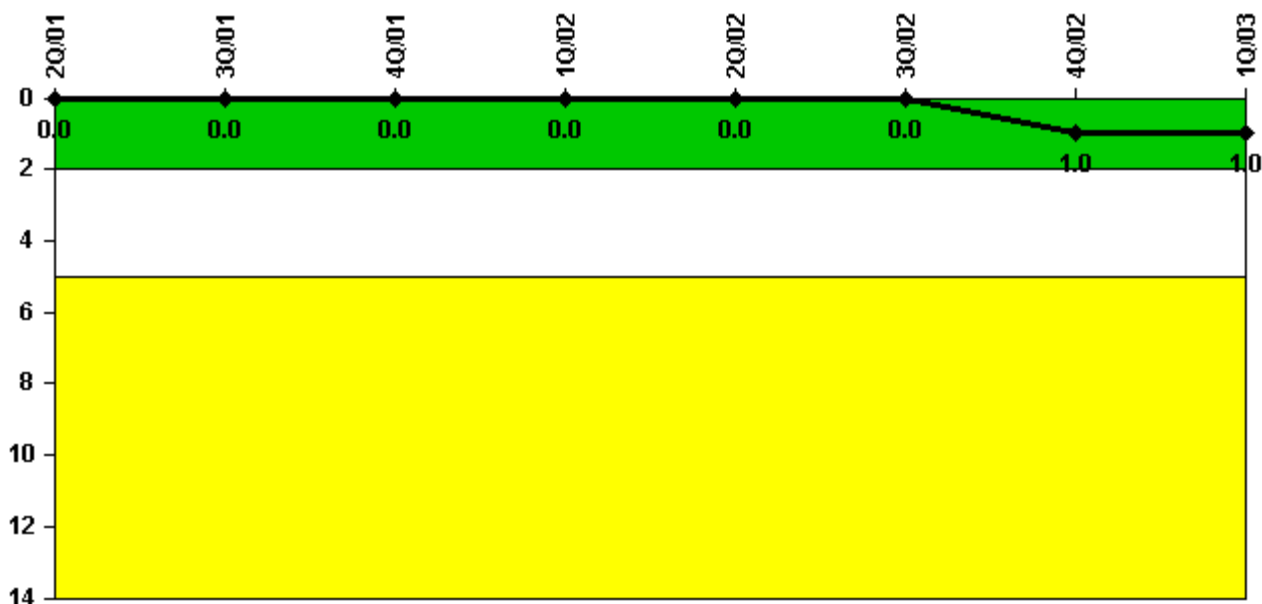
Thresholds: White < 94.0% Yellow < 90.0%

#### Notes

Alert & Notification System	2Q/01	3Q/01	4Q/01	1Q/02	2Q/02	3Q/02	4Q/02	1Q/03
Successful siren-tests	223	189	220	186	218	190	253	224
Total sirens-tests	224	192	224	192	224	192	256	224
Indicator value	99.1%	98.8%	98.9%	98.3%	97.7%	97.8%	98.0%	98.8%

Licensee Comments: none

### Occupational Exposure Control Effectiveness



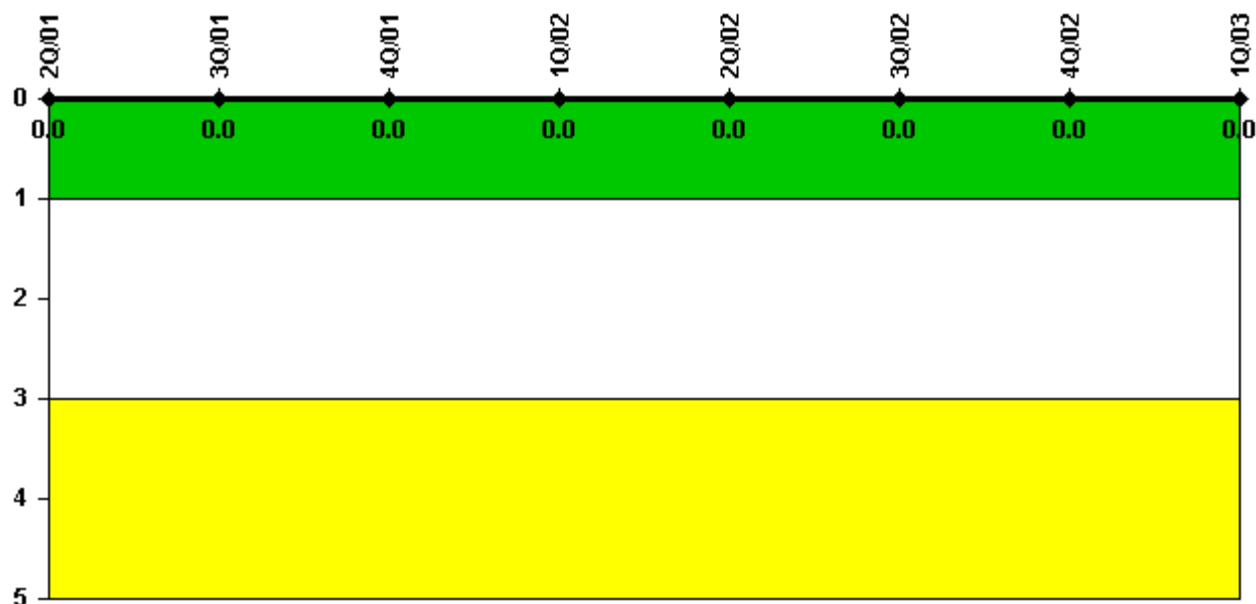
Thresholds: White > 2.0 Yellow > 5.0

**Notes**

Occupational Exposure Control Effectiveness	2Q/01	3Q/01	4Q/01	1Q/02	2Q/02	3Q/02	4Q/02	1Q/03
High radiation area occurrences	0	0	0	0	0	0	1	0
Very high radiation area occurrences	0	0	0	0	0	0	0	0
Unintended exposure occurrences	0	0	0	0	0	0	0	0
Indicator value	0	0	0	0	0	0	1	1

Licensee Comments: none

### RETS/ODCM Radiological Effluent



Thresholds: White > 1.0 Yellow > 3.0

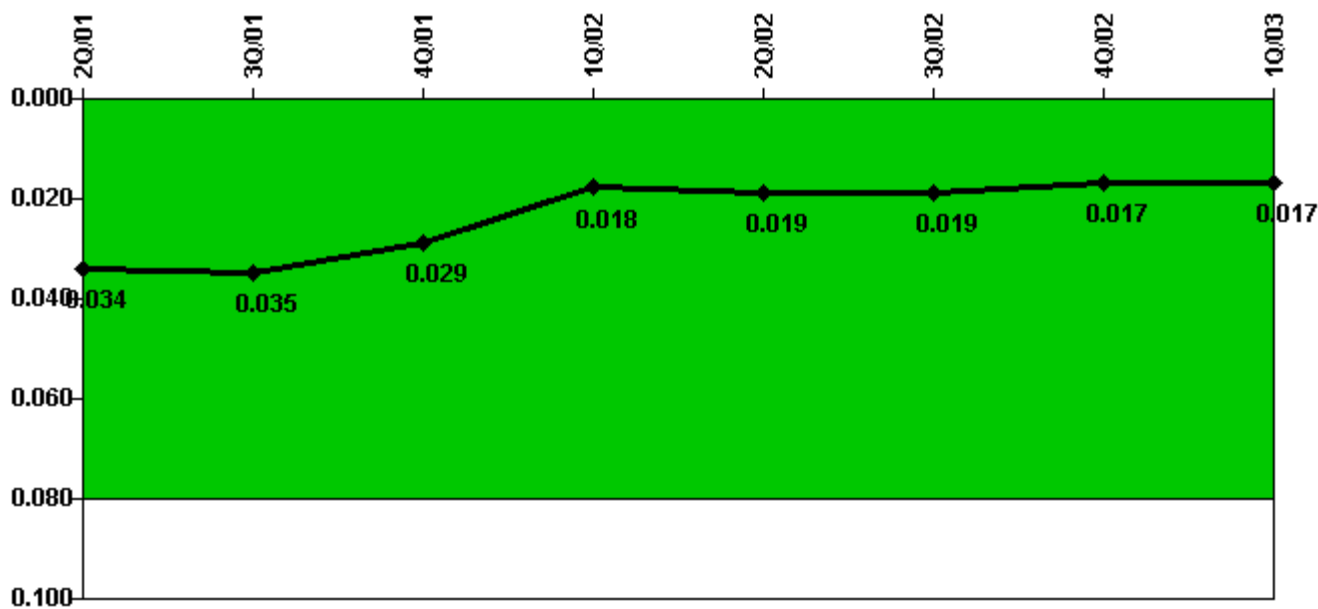
#### Notes

RETS/ODCM Radiological Effluent	2Q/01	3Q/01	4Q/01	1Q/02	2Q/02	3Q/02	4Q/02	1Q/03
RETS/ODCM occurrences	0	0	0	0	0	0	0	0
Indicator value	0	0	0	0	0	0	0	0

Licensee Comments: none



### Protected Area Security Performance Index



Thresholds: White > 0.080

#### Notes

Protected Area Security Performance Index	2Q/01	3Q/01	4Q/01	1Q/02	2Q/02	3Q/02	4Q/02	1Q/03
IDS compensatory hours	106.10	145.80	143.90	77.50	139.70	107.90	82.10	76.90
CCTV compensatory hours	41.4	66.3	16.6	11.9	41.3	97.0	4.8	11.9
IDS normalization factor	2.20	2.20	2.20	2.20	2.20	2.20	2.20	2.20
CCTV normalization factor	1.3	1.3	1.3	1.3	1.3	1.3	1.3	1.3
Index Value	0.034	0.035	0.029	0.018	0.019	0.019	0.017	0.017

Licensee Comments: none

### Personnel Screening Program



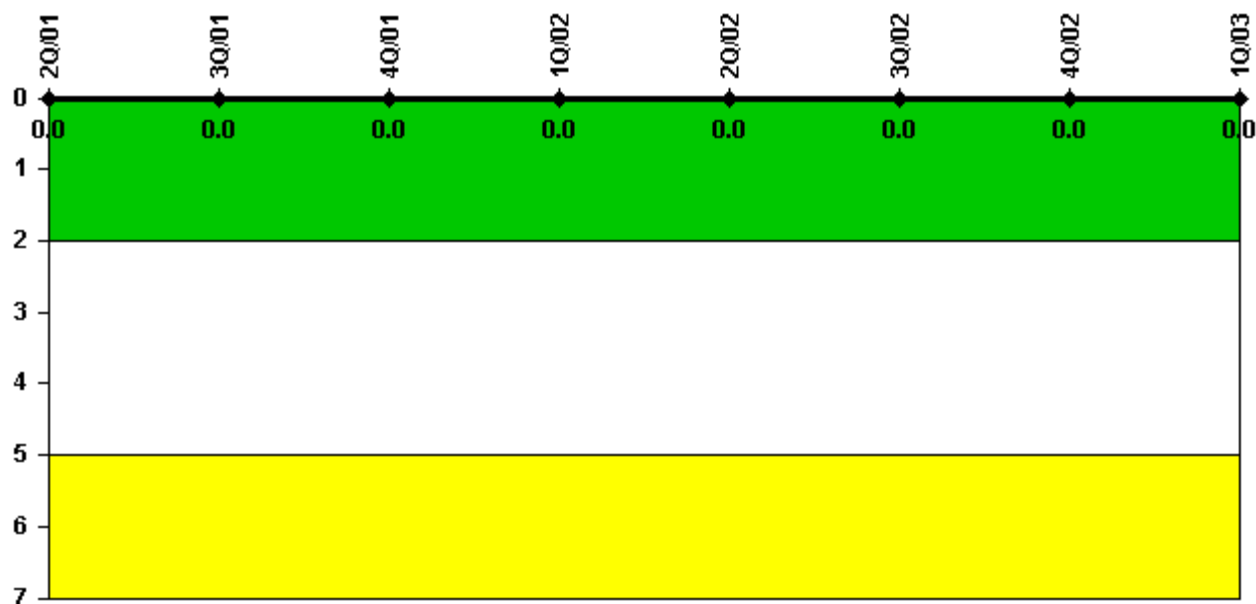
Thresholds: White > 2.0 Yellow > 5.0

#### Notes

Personnel Screening Program	2Q/01	3Q/01	4Q/01	1Q/02	2Q/02	3Q/02	4Q/02	1Q/03
Program failures	0	0	0	0	0	0	0	0
Indicator value	0	0	0	0	0	0	0	0

Licensee Comments: none

### FFD/Personnel Reliability



Thresholds: White > 2.0 Yellow > 5.0

#### Notes

FFD/Personnel Reliability	2Q/01	3Q/01	4Q/01	1Q/02	2Q/02	3Q/02	4Q/02	1Q/03
Program Failures	0	0	0	0	0	0	0	0
Indicator value	0	0	0	0	0	0	0	0

Licensee Comments: none

▲ [PI Summary](#) | [Inspection Findings Summary](#) | [Reactor Oversight Process](#)

Last Modified: April 22, 2003