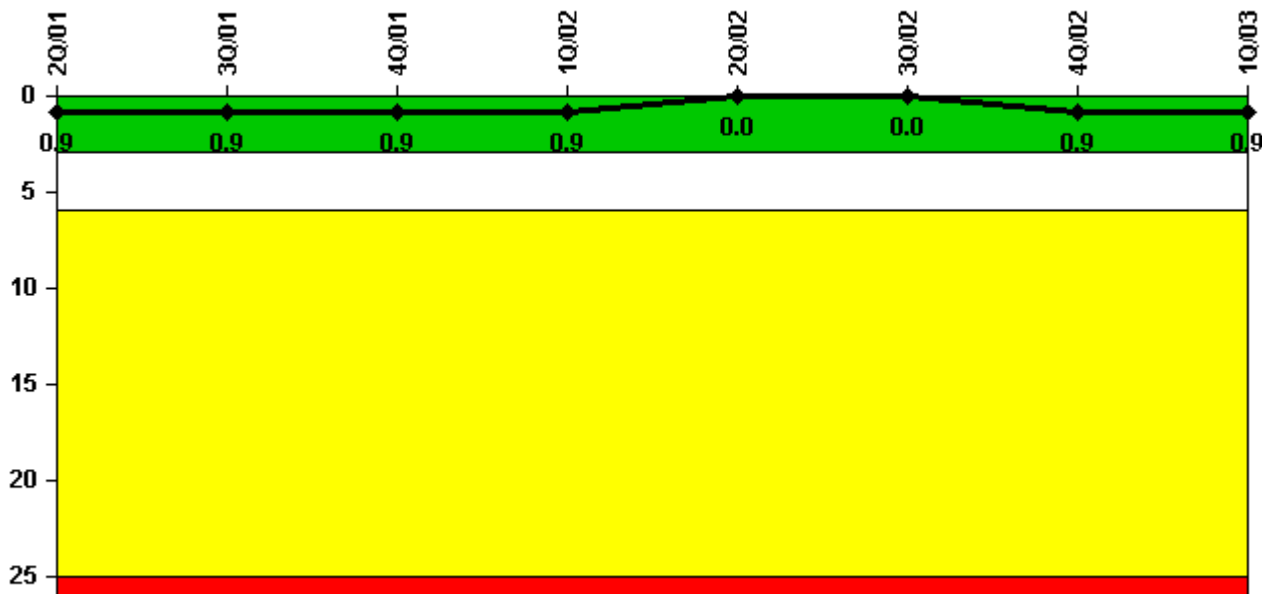


# Saint Lucie 1

## 1Q/2003 Performance Indicators

Licensee's General Comments: none

### Unplanned Scrams per 7000 Critical Hrs



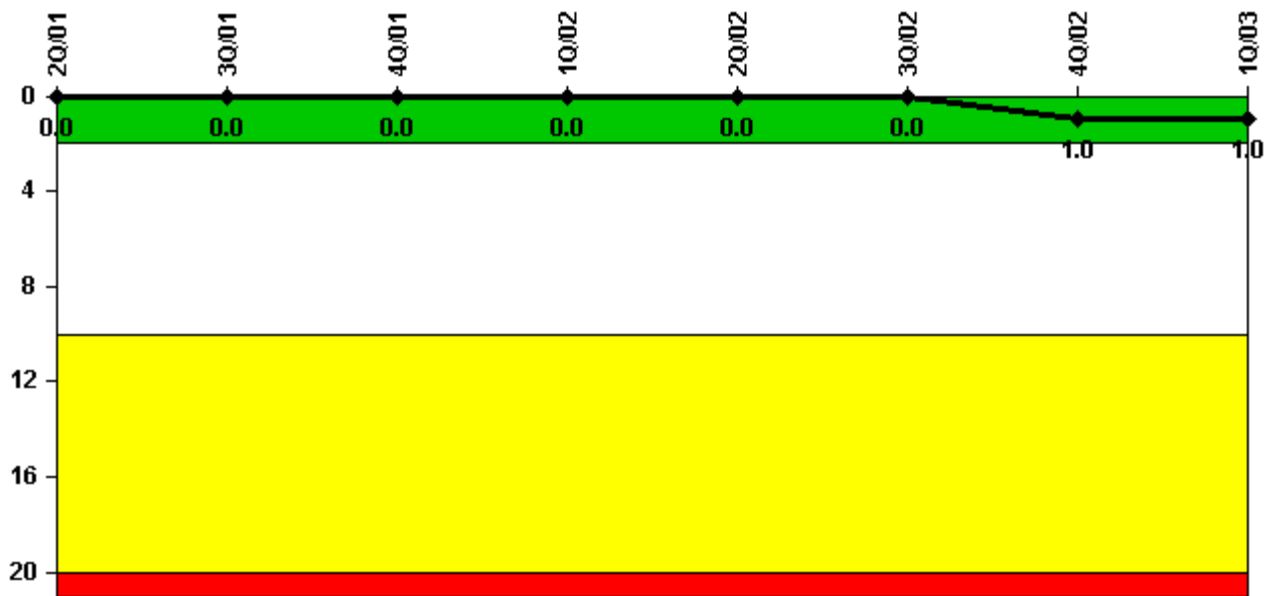
**Thresholds: White > 3.0 Yellow > 6.0 Red > 25.0**

### Notes

Unplanned Scrams per 7000 Critical Hrs	2Q/01	3Q/01	4Q/01	1Q/02	2Q/02	3Q/02	4Q/02	1Q/03
Unplanned scrams	1.0	0	0	0	0	0	1.0	0
Critical hours	1505.2	2208.0	2125.4	2160.0	2183.0	2184.0	1656.5	2160.0
Indicator value	0.9	0.9	0.9	0.9	0	0	0.9	0.9

Licensee Comments: none

### Scrams with Loss of Normal Heat Removal



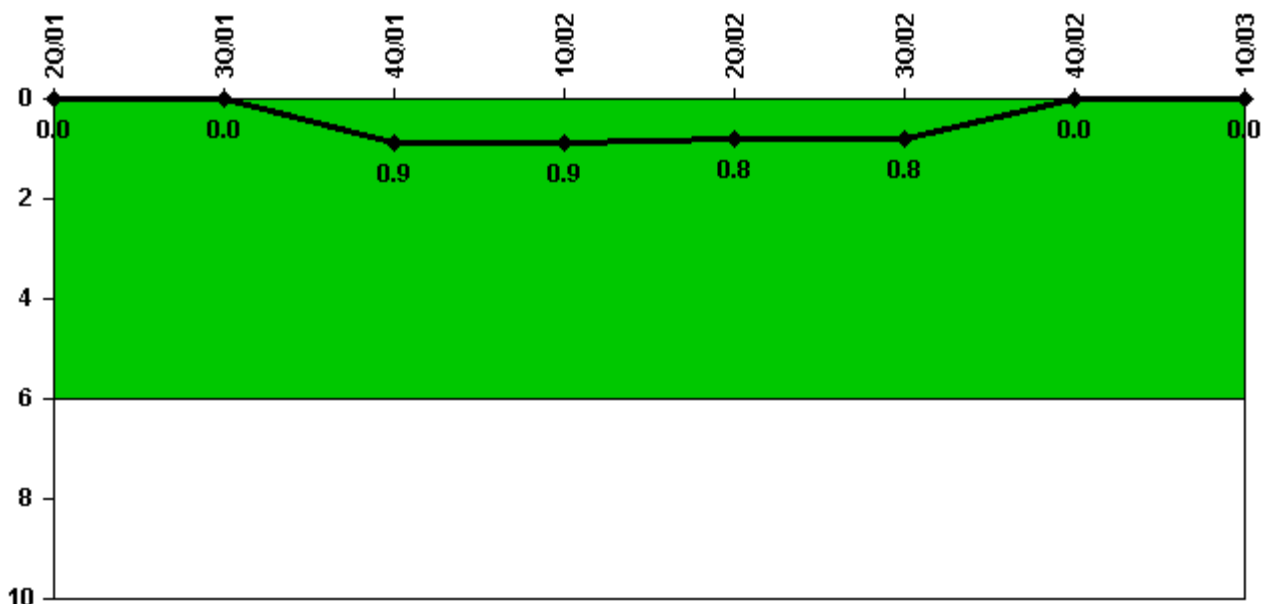
Thresholds: White > 2.0 Yellow > 10.0 Red > 20.0

#### Notes

Scrams with Loss of Normal Heat Removal	2Q/01	3Q/01	4Q/01	1Q/02	2Q/02	3Q/02	4Q/02	1Q/03
Scrams	0	0	0	0	0	0	1.0	0
Indicator value	0	0	0	0	0	0	1.0	1.0

Licensee Comments: none

### Unplanned Power Changes per 7000 Critical Hrs



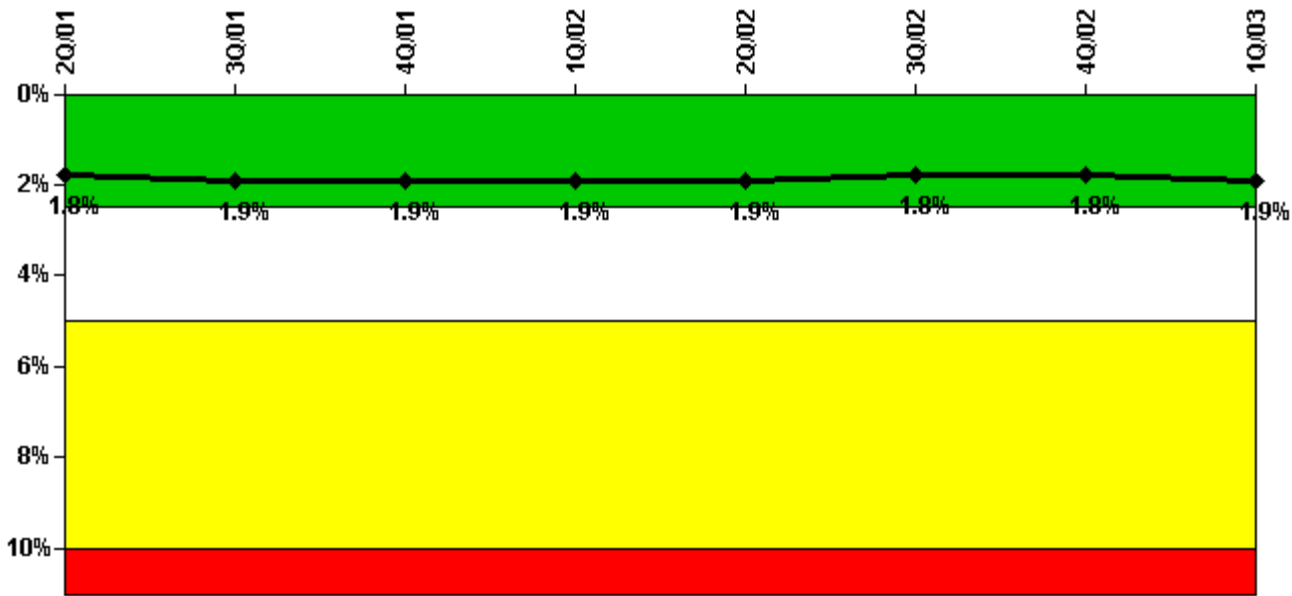
Thresholds: White > 6.0

#### Notes

Unplanned Power Changes per 7000 Critical Hrs	2Q/01	3Q/01	4Q/01	1Q/02	2Q/02	3Q/02	4Q/02	1Q/03
Unplanned power changes	0	0	1.0	0	0	0	0	0
Critical hours	1505.2	2208.0	2125.4	2160.0	2183.0	2184.0	1656.5	2160.0
Indicator value	0	0	0.9	0.9	0.8	0.8	0	0

Licensee Comments: none

### Safety System Unavailability, Emergency AC Power



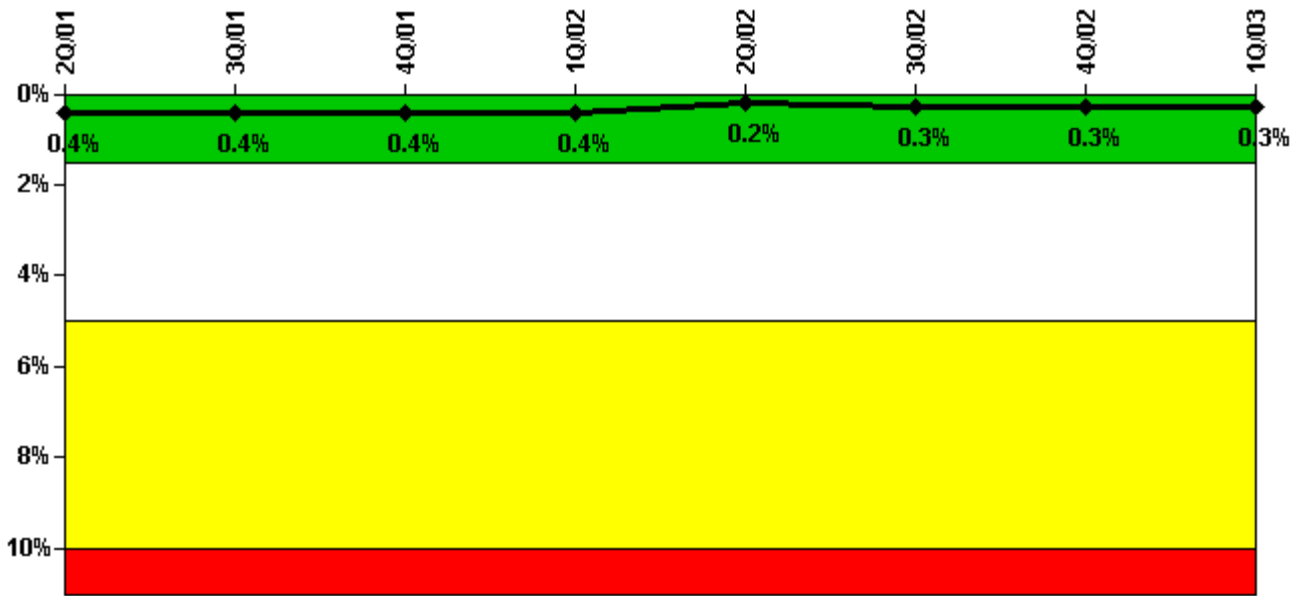
Thresholds: White > 2.5% Yellow > 5.0% Red > 10.0%

#### Notes

Safety System Unavailability, Emergency AC Power	2Q/01	3Q/01	4Q/01	1Q/02	2Q/02	3Q/02	4Q/02	1Q/03
<b>Train 1</b>								
Planned unavailable hours	3.00	51.70	4.80	5.20	6.20	5.50	7.20	4.90
Unplanned unavailable hours	0	0	0	0	0	0	0	0
Fault exposure hours	0	0	0	0	0	0	0	0
Effective Reset hours	0	0	0	0	0	0	0	0
Required hours	1945.60	2208.00	2208.00	2160.00	2183.00	2208.00	1966.50	2160.00
<b>Train 2</b>								
Planned unavailable hours	0	4.60	3.30	7.00	6.90	6.40	12.50	5.40
Unplanned unavailable hours	190.00	0	0	0	0	0	0	4.90
Fault exposure hours	555.00	0	0	0	0	0	0	0
Effective Reset hours	0	0	0	0	0	0	0	0
Required hours	1945.60	2208.00	2208.00	2160.00	2183.00	2208.00	1966.50	2160.00
Indicator value	1.8%	1.9%	1.9%	1.9%	1.9%	1.8%	1.8%	1.9%

Licensee Comments: none

### Safety System Unavailability, High Pressure Injection System (HPSI)



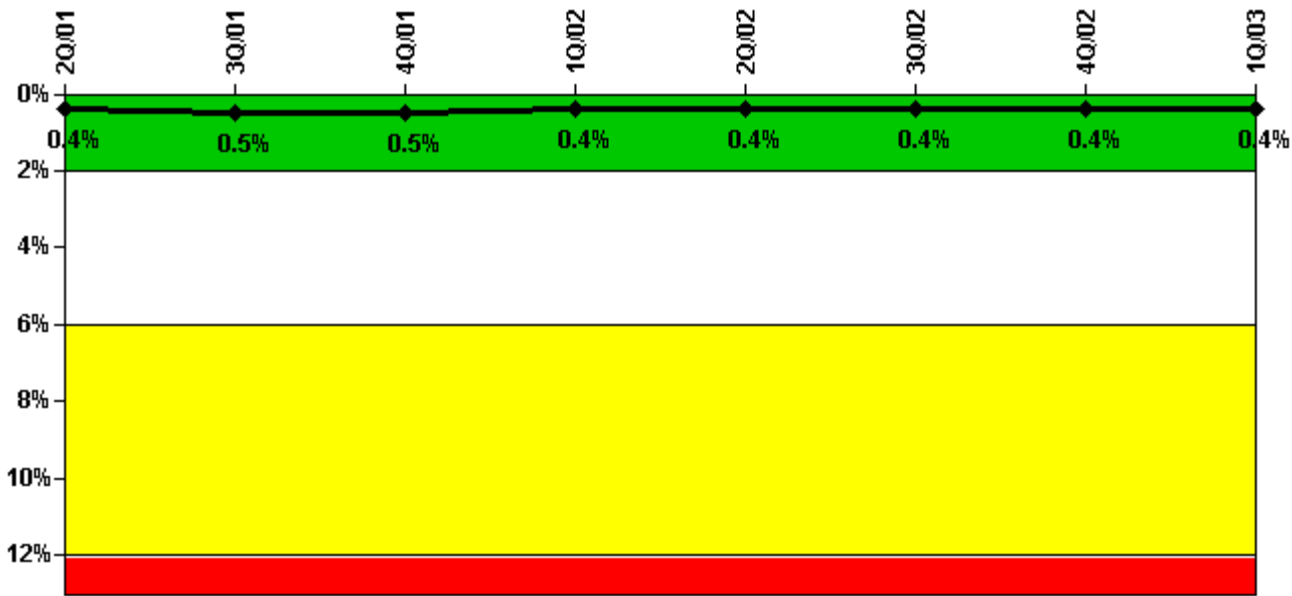
Thresholds: White > 1.5% Yellow > 5.0% Red > 10.0%

#### Notes

Safety System Unavailability, High Pressure Injection System (HPSI)	2Q/01	3Q/01	4Q/01	1Q/02	2Q/02	3Q/02	4Q/02	1Q/03
<b>Train 1</b>								
Planned unavailable hours	0.50	0.40	0.40	1.50	0.60	20.90	0.60	6.10
Unplanned unavailable hours	0	0	0	2.90	0	0	0	0
Fault exposure hours	0	0	0	0	0	0	0	0
Effective Reset hours	0	0	0	0	0	0	0	0
Required hours	1706.20	2208.00	2193.00	2160.00	2183.00	2189.70	1655.30	2160.00
<b>Train 2</b>								
Planned unavailable hours	0.80	12.60	1.00	1.20	3.70	25.50	0.80	0.80
Unplanned unavailable hours	0	0	0	0	10.60	0	0	0
Fault exposure hours	0	0	0	0	0	0	0	0
Effective Reset hours	0	0	0	0	0	0	0	0
Required hours	1706.20	2208.00	2193.00	2160.00	2183.00	2189.70	1655.30	2160.00
Indicator value	0.4%	0.4%	0.4%	0.4%	0.2%	0.3%	0.3%	0.3%

Licensee Comments: none

### Safety System Unavailability, Heat Removal System (AFW)



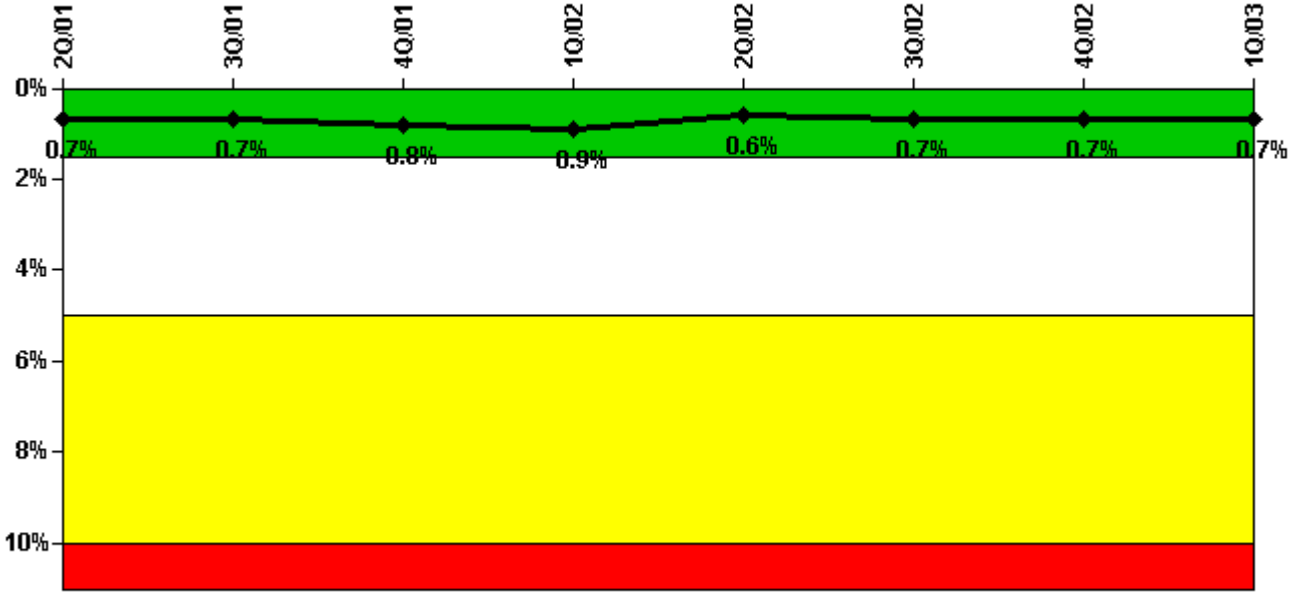
Thresholds: White > 2.0% Yellow > 6.0% Red > 12.0%

#### Notes

Safety System Unavailability, Heat Removal System (AFW)	2Q/01	3Q/01	4Q/01	1Q/02	2Q/02	3Q/02	4Q/02	1Q/03
<b>Train 1</b>								
Planned unavailable hours	1.40	4.50	4.20	4.90	3.30	10.30	0	1.70
Unplanned unavailable hours	0	0	0	0	0	0	0	0
Fault exposure hours	0	0	0	0	0	0	0	0
Effective Reset hours	0	0	0	0	0	0	0	0
Required hours	1606.00	2208.00	2166.00	2160.00	2183.00	2189.70	1705.00	2160.00
<b>Train 2</b>								
Planned unavailable hours	0.60	3.20	2.00	1.40	4.20	8.30	0	2.30
Unplanned unavailable hours	0	0	0	0	0	0	0	0
Fault exposure hours	0	0	0	0	0	0	0	0
Effective Reset hours	0	0	0	0	0	0	0	0
Required hours	1606.00	2208.00	2166.00	2160.00	2183.00	2189.70	1705.00	2160.00
<b>Train 3</b>								
Planned unavailable hours	0.80	8.60	5.90	3.10	10.00	25.50	3.50	8.30
Unplanned unavailable hours	1.70	0	1.80	0	0	10.40	28.80	47.20
Fault exposure hours	25.70	0	0	0	0	0	0	0
Effective Reset hours	0	0	0	0	0	0	0	0
Required hours	1606.00	2208.00	2166.00	2160.00	2183.00	2189.70	1705.00	2160.00
<b>Indicator value</b>	<b>0.4%</b>	<b>0.5%</b>	<b>0.5%</b>	<b>0.4%</b>	<b>0.4%</b>	<b>0.4%</b>	<b>0.4%</b>	<b>0.4%</b>

Licensee Comments: none

### Safety System Unavailability, Residual Heat Removal System



Thresholds: White > 1.5% Yellow > 5.0% Red > 10.0%

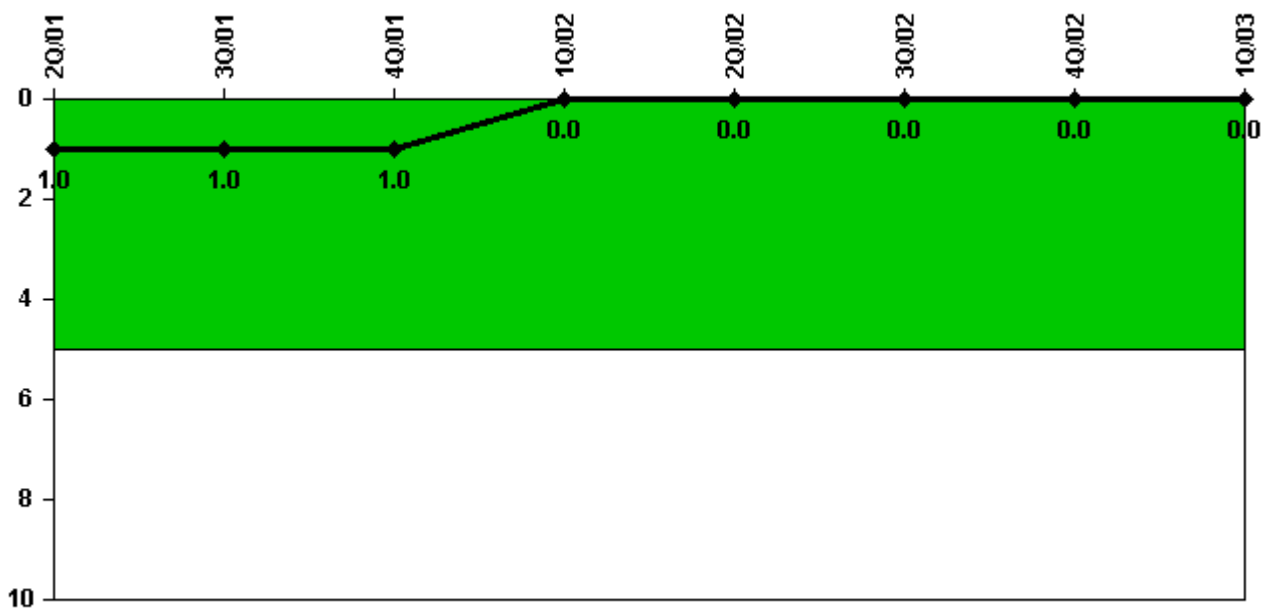
#### Notes

Safety System Unavailability, Residual Heat Removal System	2Q/01	3Q/01	4Q/01	1Q/02	2Q/02	3Q/02	4Q/02	1Q/03
<b>Train 1</b>								
Planned unavailable hours	45.00	3.60	1.50	49.50	13.50	20.40	3.20	4.60
Unplanned unavailable hours	0	20.60	0	0	0	0	0	0
Fault exposure hours	0	0	0	0	0	0	0	0
Effective Reset hours	0	0	0	0	0	0	0	0
Required hours	1578.00	2208.00	2173.30	2160.00	2183.00	2189.70	1698.70	2160.00
<b>Train 2</b>								
Planned unavailable hours	10.90	0.40	14.80	49.20	2.60	40.40	31.70	2.60
Unplanned unavailable hours	0	0	0	0	0	0	0	0
Fault exposure hours	0	0	0	0	0	0	0	0
Effective Reset hours	0	0	0	0	0	0	0	0
Required hours	1578.00	2208.00	2173.30	2160.00	2183.00	2189.70	1698.70	2160.00
<b>Train 3</b>								
Planned unavailable hours	4.70	0	0	0	0	0	0	0
Unplanned unavailable hours	0	0	0	0	0	0	0	0
Fault exposure hours	0	0	0	0	0	0	0	0
Effective Reset hours	0	0	0	0	0	0	0	0
Required hours	578.30	0	43.00	0	0	18.30	503.90	0
<b>Train 4</b>								
Planned unavailable hours	0	0	0	0	0	0	0	0

Unplanned unavailable hours	0	0	0	0	0	0	1.40	0
Fault exposure hours	0	0	0	0	0	0	0	0
Effective Reset hours	0	0	0	0	0	0	0	0
Required hours	578.30	0	43.00	0	0	18.30	503.90	0
Indicator value	0.7%	0.7%	0.8%	0.9%	0.6%	0.7%	0.7%	0.7%

Licensee Comments: none

### Safety System Functional Failures (PWR)



Thresholds: White > 5.0

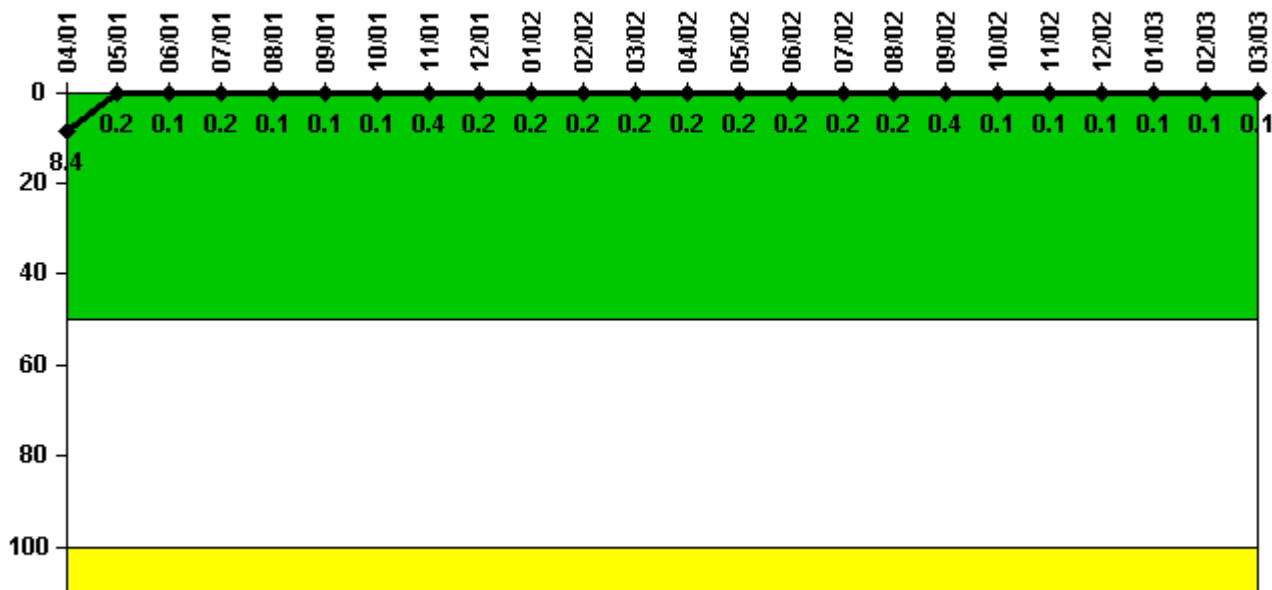
### Notes

Safety System Functional Failures (PWR)	2Q/01	3Q/01	4Q/01	1Q/02	2Q/02	3Q/02	4Q/02	1Q/03
Safety System Functional Failures	0	0	0	0	0	0	0	0
Indicator value	1	1	1	0	0	0	0	0

Licensee Comments: none



### Reactor Coolant System Activity



Thresholds: White > 50.0 Yellow > 100.0

#### Notes

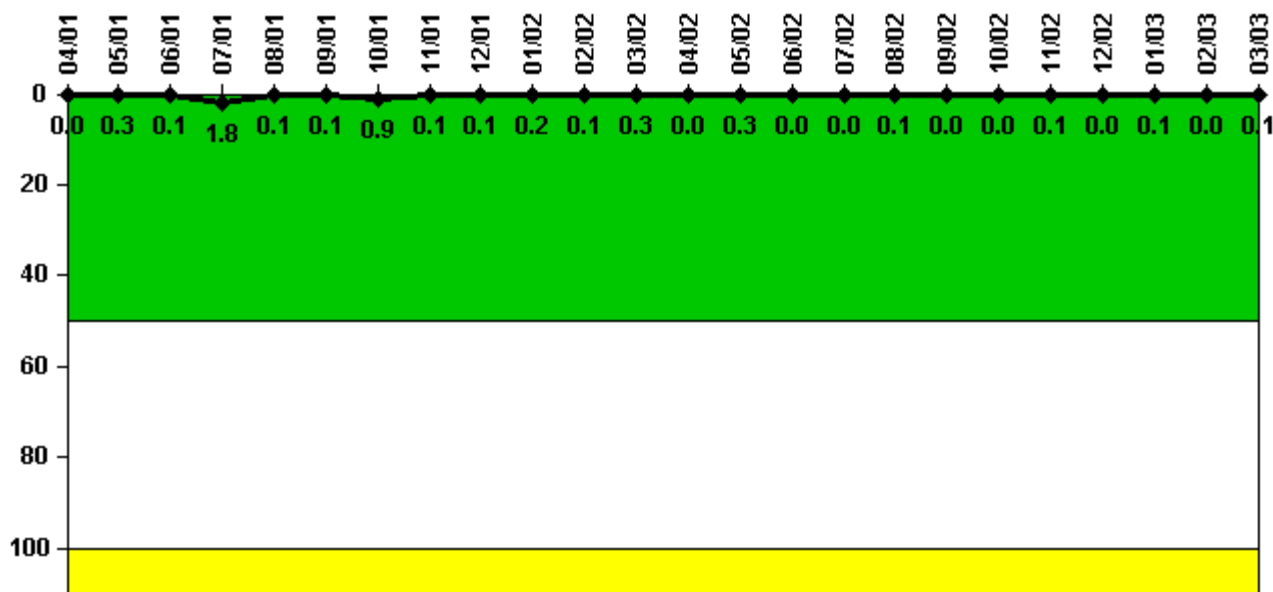
Reactor Coolant System Activity	4/01	5/01	6/01	7/01	8/01	9/01	10/01	11/01	12/01	1/02	2/02	3/02
Maximum activity	0.083700	0.001870	0.001260	0.002060	0.001240	0.001260	0.001320	0.004170	0.001660	0.001840	0.001870	0.002040
Technical specification limit	1.0	1.0	1.0	1.0	1.0	1.0	1.0	1.0	1.0	1.0	1.0	1.0
Indicator value	8.4	0.2	0.1	0.2	0.1	0.1	0.1	0.4	0.2	0.2	0.2	0.2

Reactor Coolant System Activity	4/02	5/02	6/02	7/02	8/02	9/02	10/02	11/02	12/02	1/03	2/03	3/03
Maximum activity	0.002310	0.001540	0.001820	0.001820	0.001940	0.004040	0.001110	0.001210	0.001110	0.001130	0.001060	0.000976
Technical specification limit	1.0	1.0	1.0	1.0	1.0	1.0	1.0	1.0	1.0	1.0	1.0	1.0
Indicator value	0.2	0.2	0.2	0.2	0.2	0.4	0.1	0.1	0.1	0.1	0.1	0.1

Licensee Comments: none

### Reactor Coolant System Leakage



Thresholds: White > 50.0 Yellow > 100.0

#### Notes

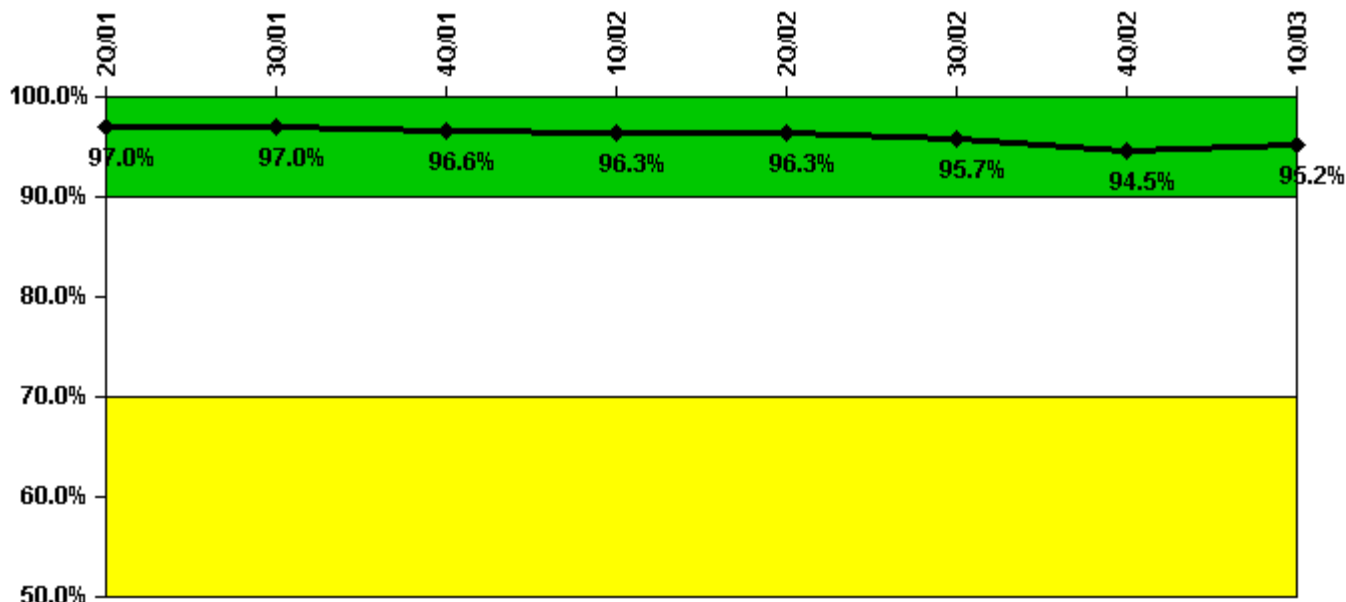
Reactor Coolant System Leakage	4/01	5/01	6/01	7/01	8/01	9/01	10/01	11/01	12/01	1/02	2/02	3/02
Maximum leakage	0	0.030	0.010	0.180	0.010	0.010	0.090	0.010	0.010	0.020	0.010	0.030
Technical specification limit	10.0	10.0	10.0	10.0	10.0	10.0	10.0	10.0	10.0	10.0	10.0	10.0
Indicator value	0	0.3	0.1	1.8	0.1	0.1	0.9	0.1	0.1	0.2	0.1	0.3

Reactor Coolant System Leakage	4/02	5/02	6/02	7/02	8/02	9/02	10/02	11/02	12/02	1/03	2/03	3/03
Maximum leakage	0	0.030	0	0.004	0.010	0	0	0.010	0	0.009	0.004	0.011
Technical specification limit	10.0	10.0	10.0	10.0	10.0	10.0	10.0	10.0	10.0	10.0	10.0	10.0
Indicator value	0	0.3	0	0	0.1	0	0	0.1	0	0.1	0	0.1

Licensee Comments: none

### Drill/Exercise Performance



Thresholds: White < 90.0% Yellow < 70.0%

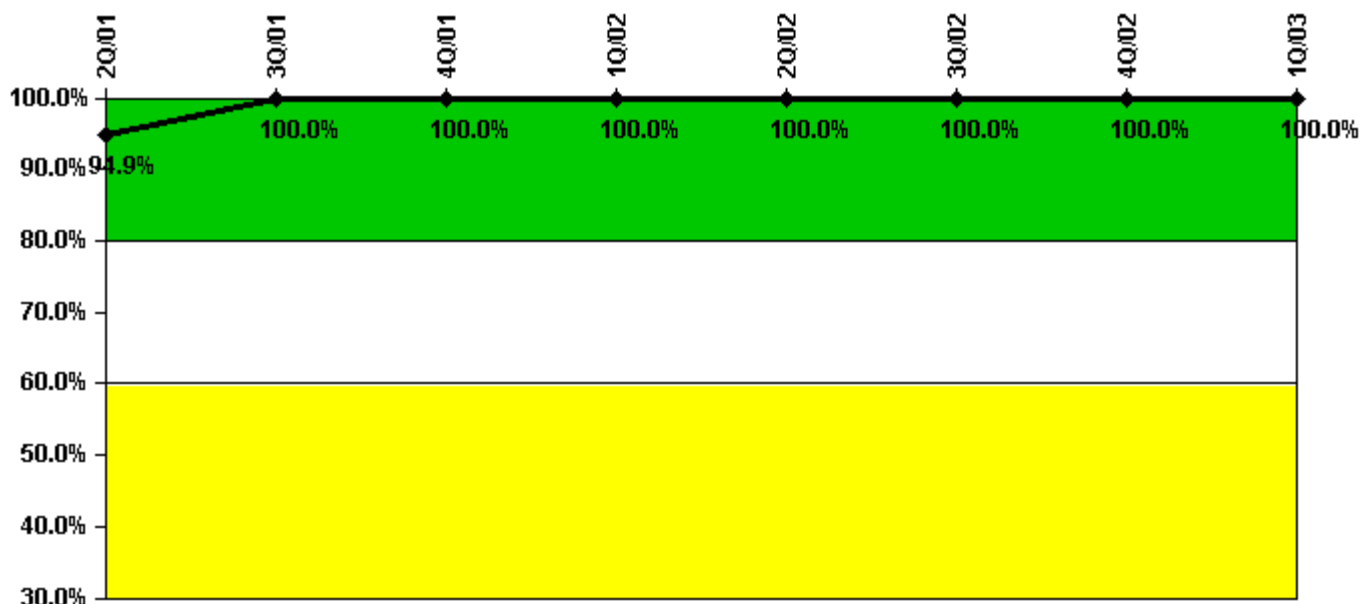
#### Notes

Drill/Exercise Performance	2Q/01	3Q/01	4Q/01	1Q/02	2Q/02	3Q/02	4Q/02	1Q/03
Successful opportunities	39.0	82.0	12.0	47.0	13.0	70.0	5.0	87.0
Total opportunities	43.0	85.0	13.0	50.0	14.0	73.0	6.0	89.0
Indicator value	97.0%	97.0%	96.6%	96.3%	96.3%	95.7%	94.5%	95.2%

Licensee Comments:

3Q/02: Corrected both opportunity numbers to remove two (2) inappropriately counted training exercises (72 to 70, and 75 to 73 respectively).

### ERO Drill Participation



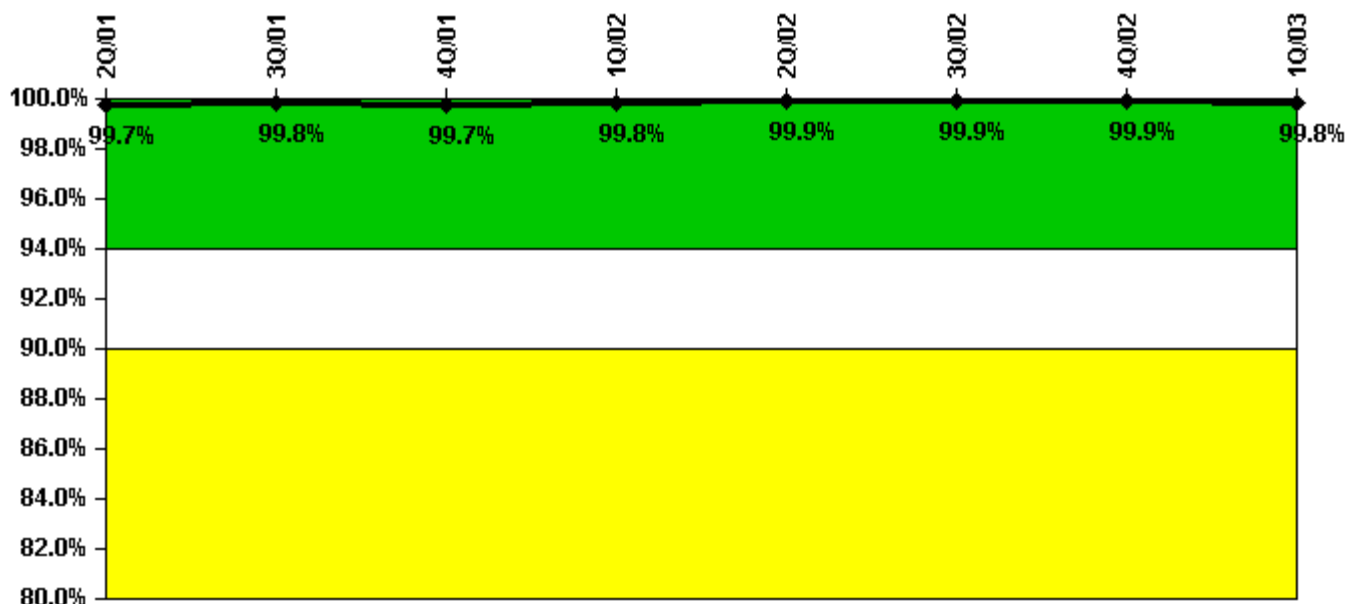
Thresholds: White < 80.0% Yellow < 60.0%

#### Notes

ERO Drill Participation	2Q/01	3Q/01	4Q/01	1Q/02	2Q/02	3Q/02	4Q/02	1Q/03
Participating Key personnel	75.0	79.0	72.0	72.0	75.0	79.0	75.0	82.0
Total Key personnel	79.0	79.0	72.0	72.0	75.0	79.0	75.0	82.0
Indicator value	94.9%	100.0%	100.0%	100.0%	100.0%	100.0%	100.0%	100.0%

Licensee Comments: none

### Alert & Notification System



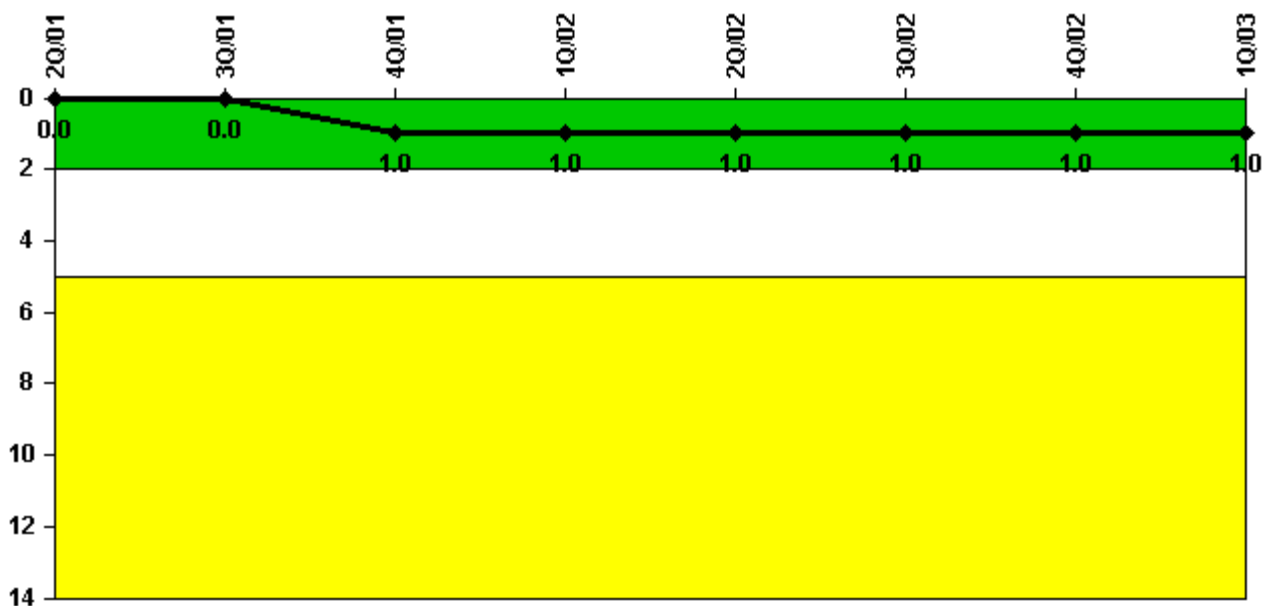
Thresholds: White < 94.0% Yellow < 90.0%

#### Notes

Alert & Notification System	2Q/01	3Q/01	4Q/01	1Q/02	2Q/02	3Q/02	4Q/02	1Q/03
Successful siren-tests	521	703	527	704	527	704	527	709
Total sirens-tests	523	704	528	704	528	704	528	711
Indicator value	99.7%	99.8%	99.7%	99.8%	99.9%	99.9%	99.9%	99.8%

Licensee Comments: none

### Occupational Exposure Control Effectiveness



Thresholds: White > 2.0 Yellow > 5.0

#### Notes

Occupational Exposure Control Effectiveness	2Q/01	3Q/01	4Q/01	1Q/02	2Q/02	3Q/02	4Q/02	1Q/03
High radiation area occurrences	0	0	1	0	0	0	1	0
Very high radiation area occurrences	0	0	0	0	0	0	0	0
Unintended exposure occurrences	0	0	0	0	0	0	0	0
Indicator value	0	0	1	1	1	1	1	1

Licensee Comments: none

### RETS/ODCM Radiological Effluent



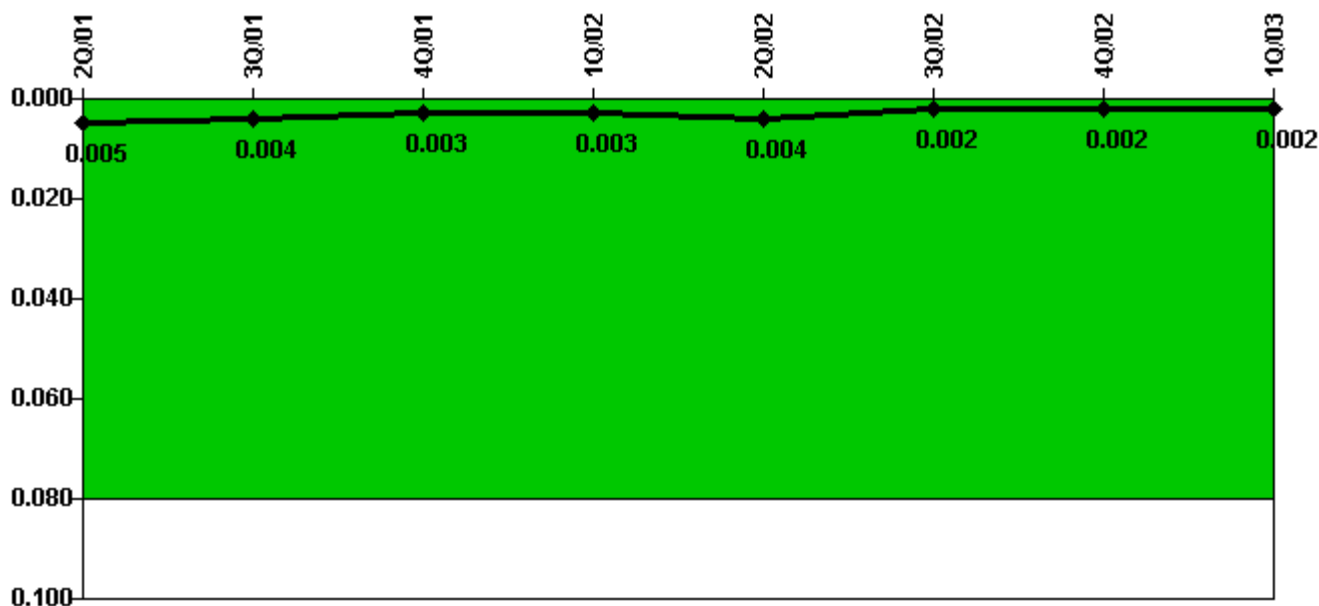
Thresholds: White > 1.0 Yellow > 3.0

#### Notes

RETS/ODCM Radiological Effluent	2Q/01	3Q/01	4Q/01	1Q/02	2Q/02	3Q/02	4Q/02	1Q/03
RETS/ODCM occurrences	0	0	0	0	0	0	0	0
Indicator value	0	0	0	0	0	0	0	0

Licensee Comments: none

### Protected Area Security Performance Index



Thresholds: White > 0.080

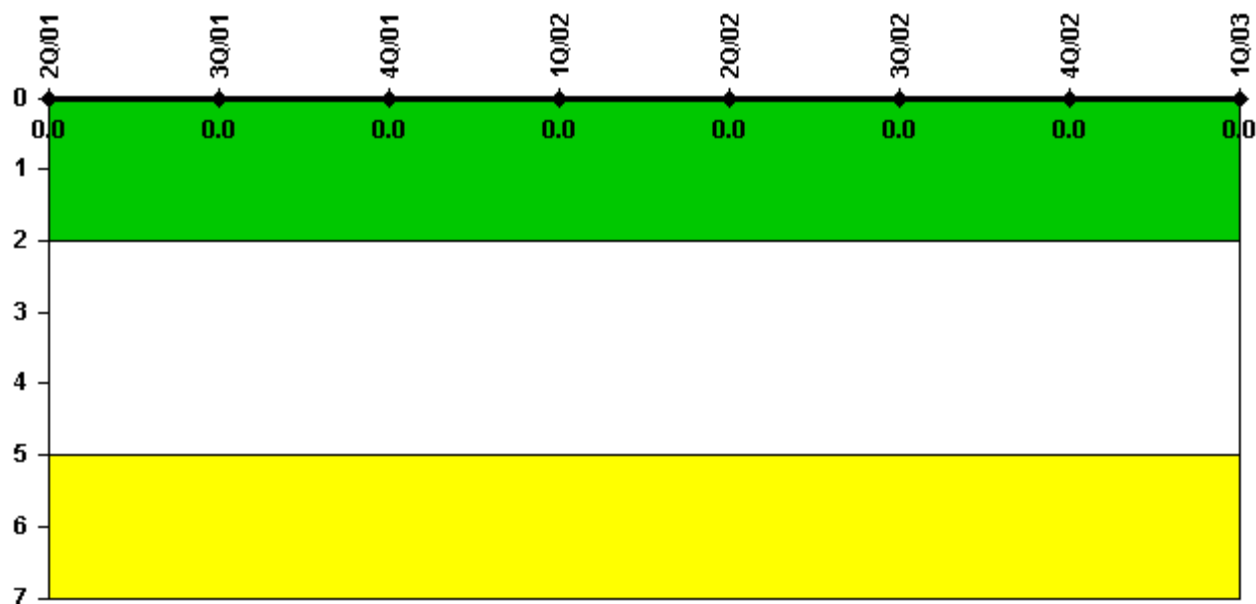
#### Notes

Protected Area Security Performance Index	2Q/01	3Q/01	4Q/01	1Q/02	2Q/02	3Q/02	4Q/02	1Q/03
IDS compensatory hours	0	81.20	2.70	15.60	39.30	6.80	0	4.40
CCTV compensatory hours	0	0	0	0	0	0	0	0
IDS normalization factor	1.80	1.80	1.80	1.80	1.80	1.80	1.80	1.80
CCTV normalization factor	1.5	1.5	1.5	1.5	1.5	1.5	1.5	1.5
Index Value	0.005	0.004	0.003	0.003	0.004	0.002	0.002	0.002

Licensee Comments: none



### Personnel Screening Program



Thresholds: White > 2.0 Yellow > 5.0

#### Notes

Personnel Screening Program	2Q/01	3Q/01	4Q/01	1Q/02	2Q/02	3Q/02	4Q/02	1Q/03
Program failures	0	0	0	0	0	0	0	0
Indicator value	0	0	0	0	0	0	0	0

Licensee Comments: none

### FFD/Personnel Reliability



Thresholds: White > 2.0 Yellow > 5.0

#### Notes

FFD/Personnel Reliability	2Q/01	3Q/01	4Q/01	1Q/02	2Q/02	3Q/02	4Q/02	1Q/03
Program Failures	0	0	0	0	0	0	0	0
Indicator value	0	0	0	0	0	0	0	0

Licensee Comments: none

▲ [PI Summary](#) | [Inspection Findings Summary](#) | [Reactor Oversight Process](#)

Last Modified: April 22, 2003