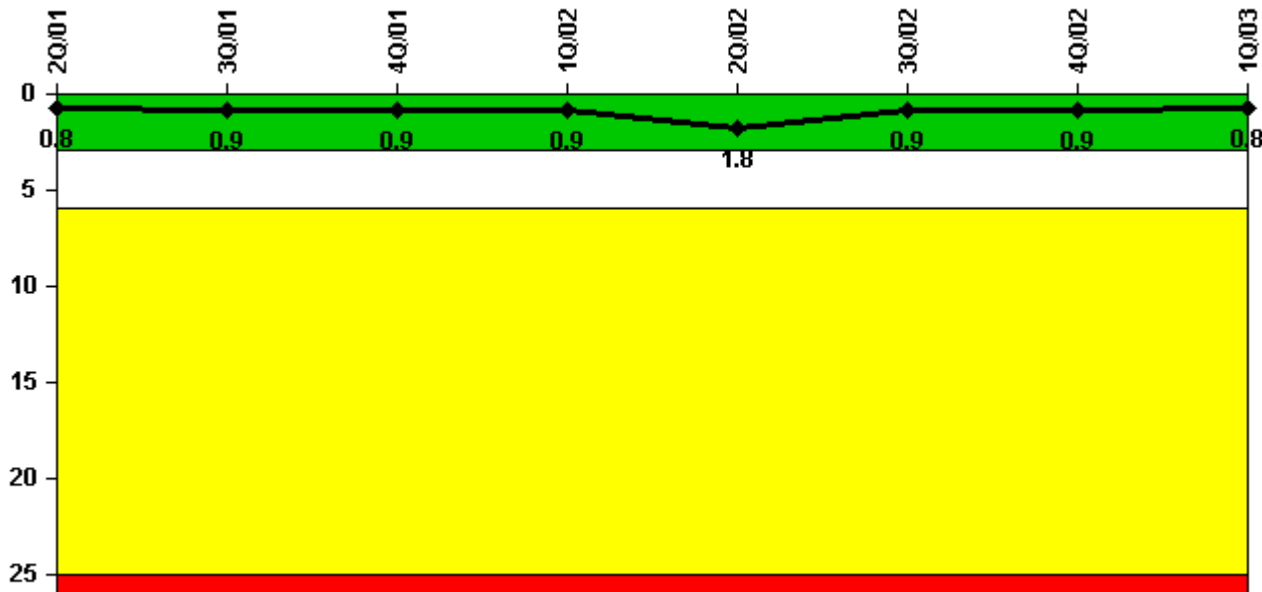


Quad Cities 2

1Q/2003 Performance Indicators

Licensee's General Comments: none

Unplanned Scrams per 7000 Critical Hrs



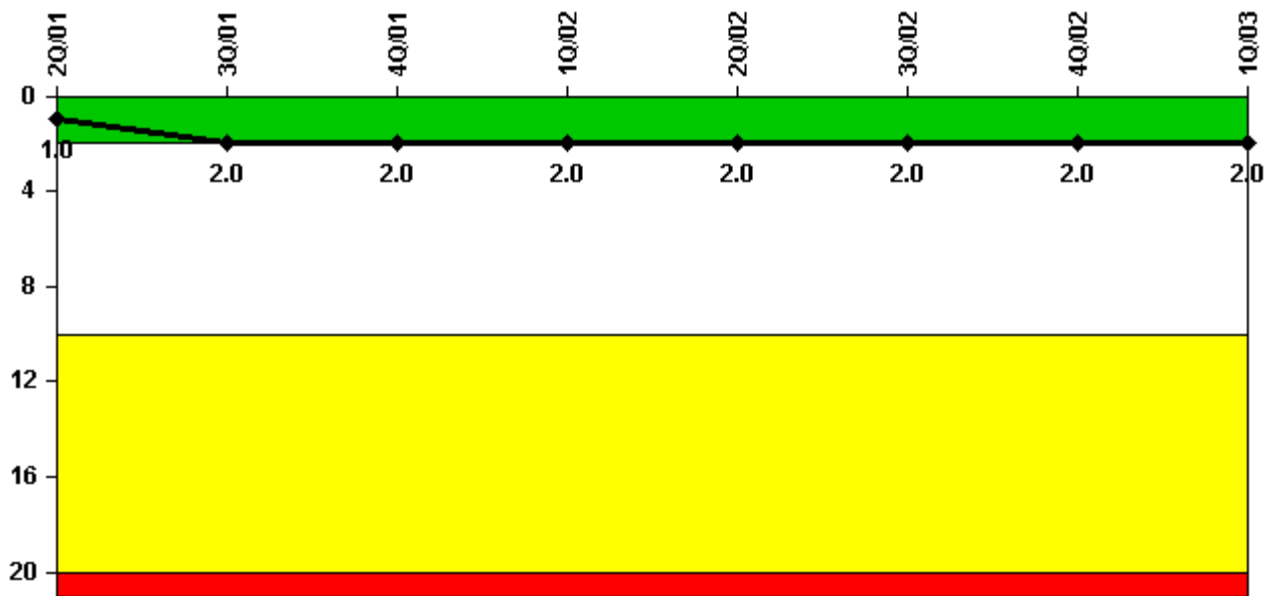
Thresholds: White > 3.0 Yellow > 6.0 Red > 25.0

Notes

Unplanned Scrams per 7000 Critical Hrs	2Q/01	3Q/01	4Q/01	1Q/02	2Q/02	3Q/02	4Q/02	1Q/03
Unplanned scrams	0	1.0	0	0	1.0	0	0	0
Critical hours	2183.0	1616.2	2209.0	1624.5	2150.0	1967.3	2209.0	2160.0
Indicator value	0.8	0.9	0.9	0.9	1.8	0.9	0.9	0.8

Licensee Comments: none

Scrams with Loss of Normal Heat Removal



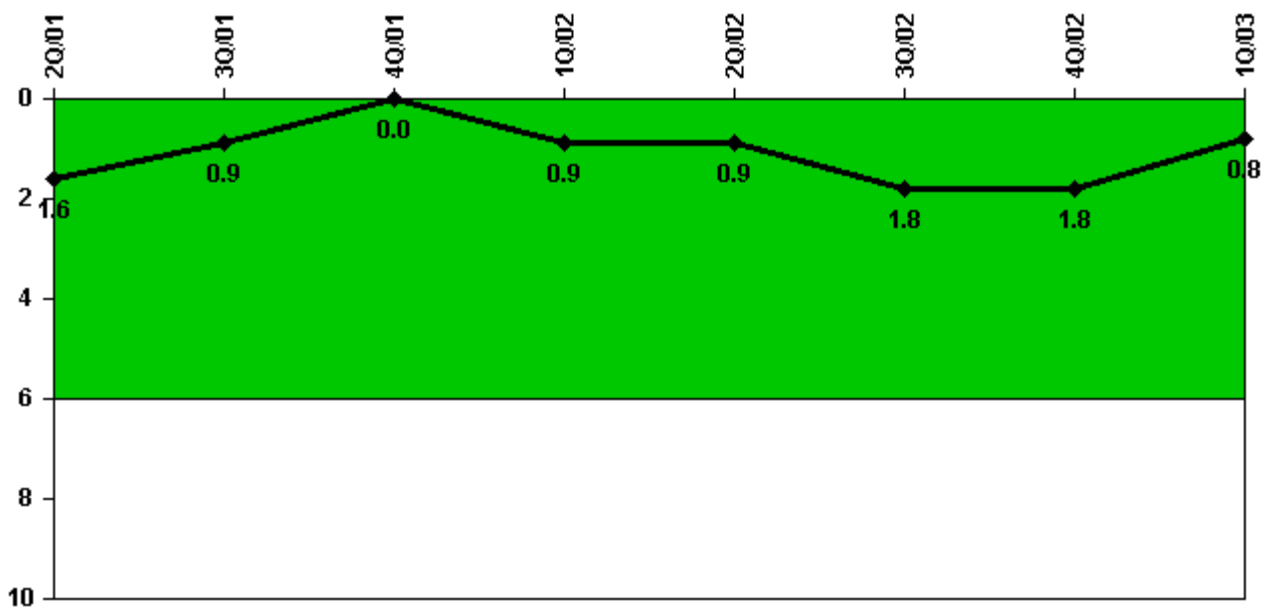
Thresholds: White > 2.0 Yellow > 10.0 Red > 20.0

Notes

Scrams with Loss of Normal Heat Removal	2Q/01	3Q/01	4Q/01	1Q/02	2Q/02	3Q/02	4Q/02	1Q/03
Scrams	0	1.0	0	0	0	0	0	0
Indicator value	1.0	2.0	2.0	2.0	2.0	2.0	2.0	2.0

Licensee Comments: none

Unplanned Power Changes per 7000 Critical Hrs



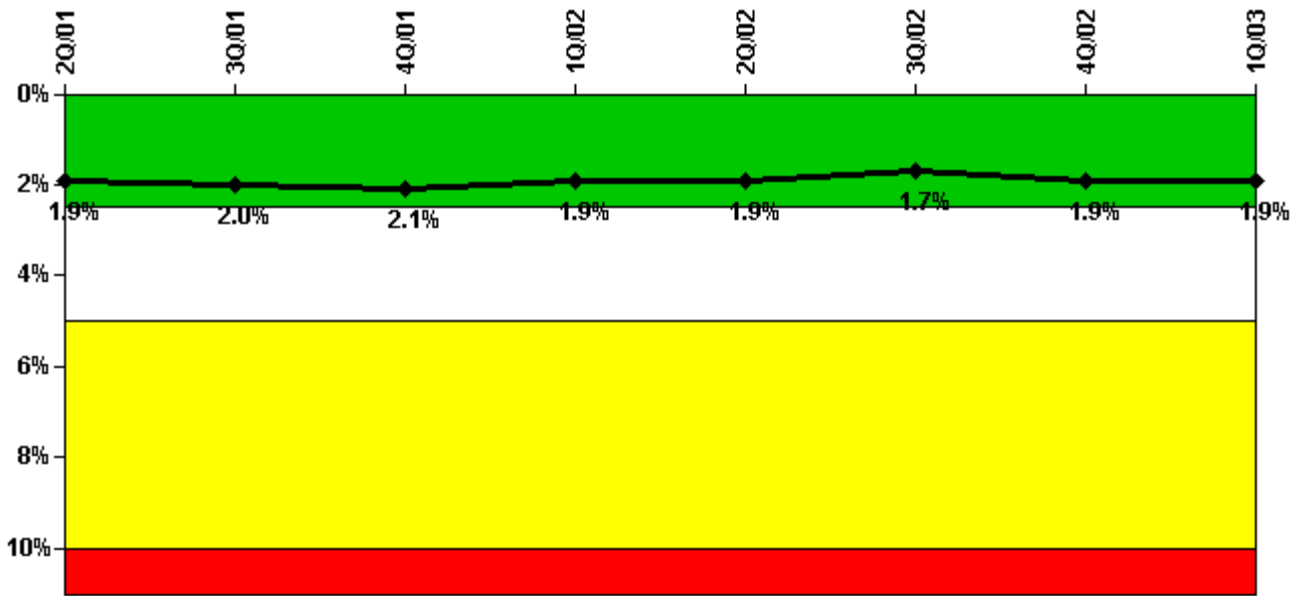
Thresholds: White > 6.0

Notes

Unplanned Power Changes per 7000 Critical Hrs	2Q/01	3Q/01	4Q/01	1Q/02	2Q/02	3Q/02	4Q/02	1Q/03
Unplanned power changes	0	0	0	1.0	0	1.0	0	0
Critical hours	2183.0	1616.2	2209.0	1624.5	2150.0	1967.3	2209.0	2160.0
Indicator value	1.6	0.9	0	0.9	0.9	1.8	1.8	0.8

Licensee Comments: none

Safety System Unavailability, Emergency AC Power



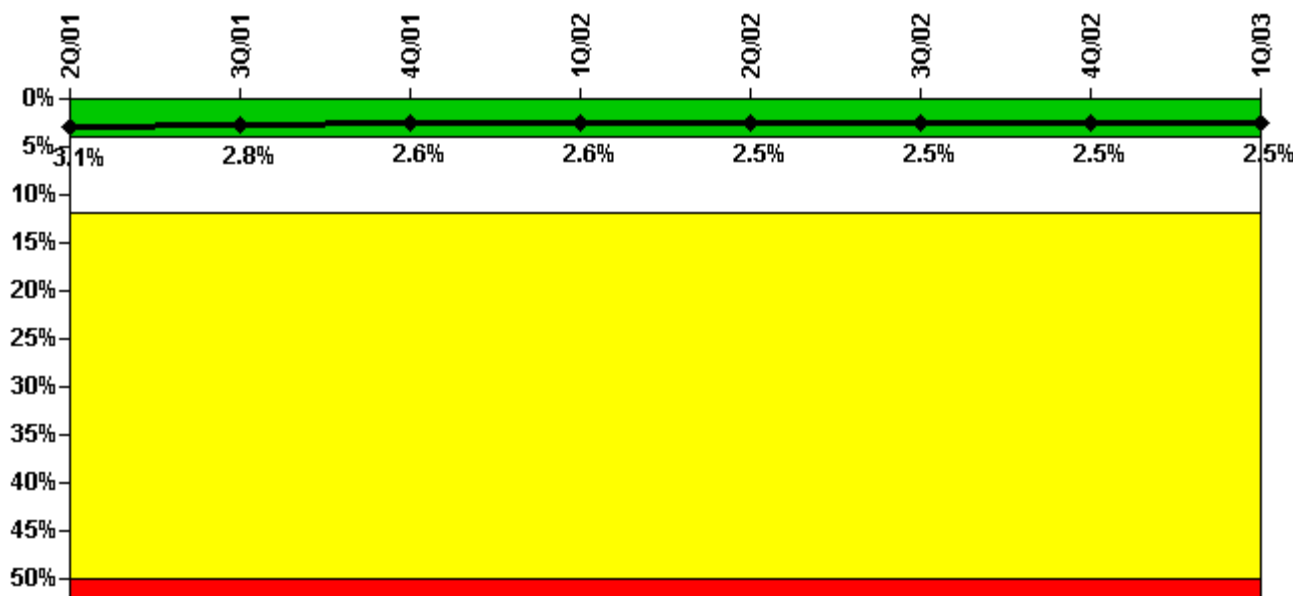
Thresholds: White > 2.5% Yellow > 5.0% Red > 10.0%

Notes

Safety System Unavailability, Emergency AC Power	2Q/01	3Q/01	4Q/01	1Q/02	2Q/02	3Q/02	4Q/02	1Q/03
Train 1								
Planned unavailable hours	47.60	23.15	8.58	24.73	14.47	20.60	14.70	14.73
Unplanned unavailable hours	78.30	0	0	0	0	0	0	0
Fault exposure hours	0	0	0	0	0	0	0	0
Effective Reset hours	0	0	0	0	0	0	0	0
Required hours	2183.00	2208.00	2209.00	2160.00	2183.00	2208.00	2209.00	2160.00
Train 2								
Planned unavailable hours	57.50	23.77	20.97	11.85	18.28	18.68	92.85	38.77
Unplanned unavailable hours	0	0	0	0	0	0	20.15	0
Fault exposure hours	0	0	0	0	0	0	0	0
Effective Reset hours	0	0	0	0	0	0	0	0
Required hours	2183.00	2208.00	2209.00	2160.00	2183.00	2208.00	2209.00	2160.00
Indicator value	1.9%	2.0%	2.1%	1.9%	1.9%	1.7%	1.9%	1.9%

Licensee Comments: none

Safety System Unavailability, High Pressure Injection System (HPCI)



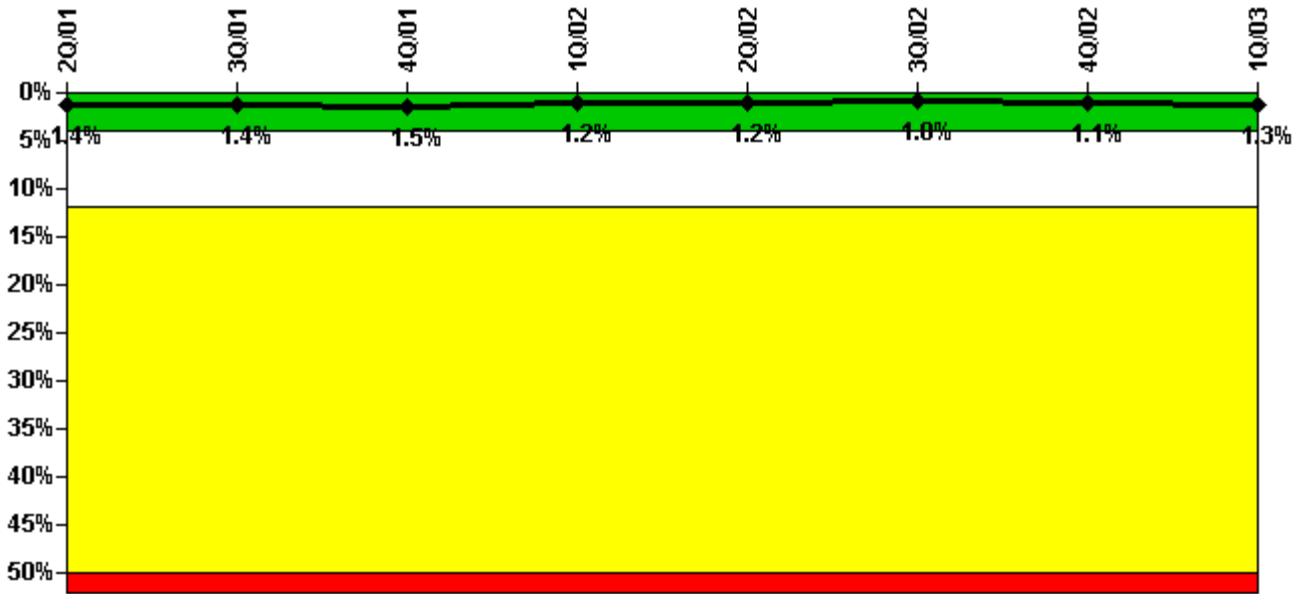
Thresholds: White > 4.0% Yellow > 12.0% Red > 50.0%

Notes

Safety System Unavailability, High Pressure Injection System (HPCI)	2Q/01	3Q/01	4Q/01	1Q/02	2Q/02	3Q/02	4Q/02	1Q/03
Train 1								
Planned unavailable hours	10.50	4.79	5.97	8.01	57.08	4.03	33.02	13.00
Unplanned unavailable hours	42.81	0	0	0	0	0.22	0.08	0
Fault exposure hours	0	0	0	0	0	0	0	0
Effective Reset hours	0	0	0	0	0	0	0	0
Required hours	2183.00	1616.20	2209.00	1624.50	2150.00	1967.30	2209.00	2160.00
Indicator value	3.1%	2.8%	2.6%	2.6%	2.5%	2.5%	2.5%	2.5%

Licensee Comments: none

Safety System Unavailability, Heat Removal System (RCIC)



Thresholds: White > 4.0% Yellow > 12.0% Red > 50.0%

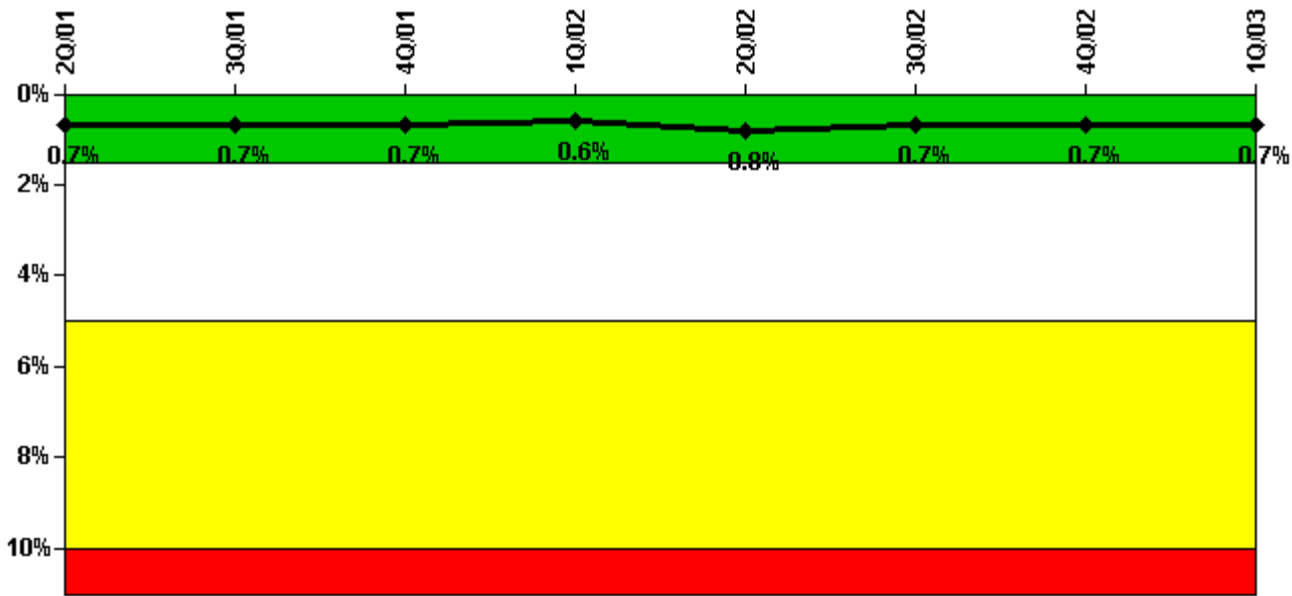
Notes

Safety System Unavailability, Heat Removal System (RCIC)	2Q/01	3Q/01	4Q/01	1Q/02	2Q/02	3Q/02	4Q/02	1Q/03
Train 1								
Planned unavailable hours	11.78	3.33	51.60	5.12	8.37	9.49	26.37	47.89
Unplanned unavailable hours	0	0	0	0	0	5.00	0.08	14.40
Fault exposure hours	0	0	0	0	0	0	0	0
Effective Reset hours	0	0	0	0	0	0	0	0
Required hours	2183.00	1616.20	2209.00	1624.50	2150.00	1967.30	2209.00	2160.00
Indicator value	1.4%	1.4%	1.5%	1.2%	1.2%	1.0%	1.1%	1.3%

Licensee Comments:

1Q/03: The Reactor Core Isolation Cooling system (RCIC) failed to start on March 12, 2003, during a surveillance following maintenance. RCIC tripped on an overspeed signal due to a frayed wire. The last successful test of the system was on December 11, 2002. Taking into account 46.32 hours of planned unavailability in that time frame, there were 1048.9 hours of T/2 fault exposure time.

Safety System Unavailability, Residual Heat Removal System



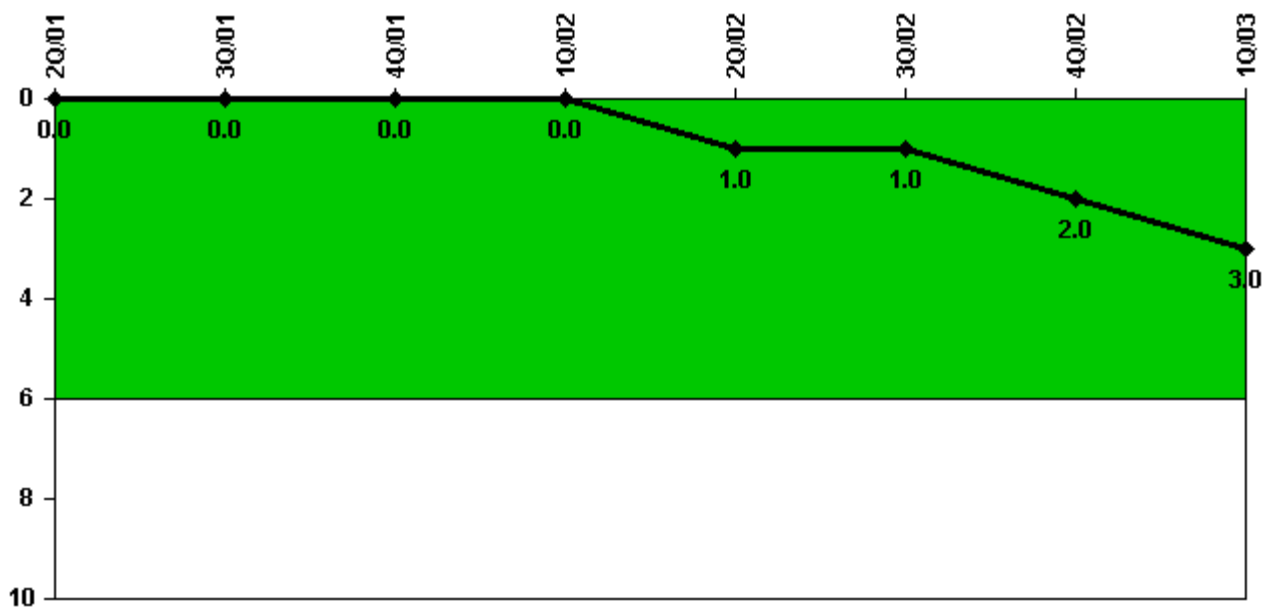
Thresholds: White > 1.5% Yellow > 5.0% Red > 10.0%

Notes

Safety System Unavailability, Residual Heat Removal System	2Q/01	3Q/01	4Q/01	1Q/02	2Q/02	3Q/02	4Q/02	1Q/03
Train 1								
Planned unavailable hours	0	3.88	0	12.13	9.22	0	0	126.80
Unplanned unavailable hours	0	0	0	0	0	0	0	0
Fault exposure hours	0	0	0	0	0	0	0	0
Effective Reset hours	0	0	0	0	0	0	0	0
Required hours	2183.00	2208.00	2209.00	2160.00	2183.00	2208.00	2209.00	2160.00
Train 2								
Planned unavailable hours	5.20	0	4.03	7.03	69.80	0	30.72	32.50
Unplanned unavailable hours	0	0	0	0	0	0	0	0
Fault exposure hours	0	0	0	0	0	0	0	0
Effective Reset hours	0	0	0	0	0	0	0	0
Required hours	2183.00	2208.00	2209.00	2160.00	2183.00	2208.00	2209.00	2160.00
Indicator value	0.7%	0.7%	0.7%	0.6%	0.8%	0.7%	0.7%	0.7%

Licensee Comments: none

Safety System Functional Failures (BWR)



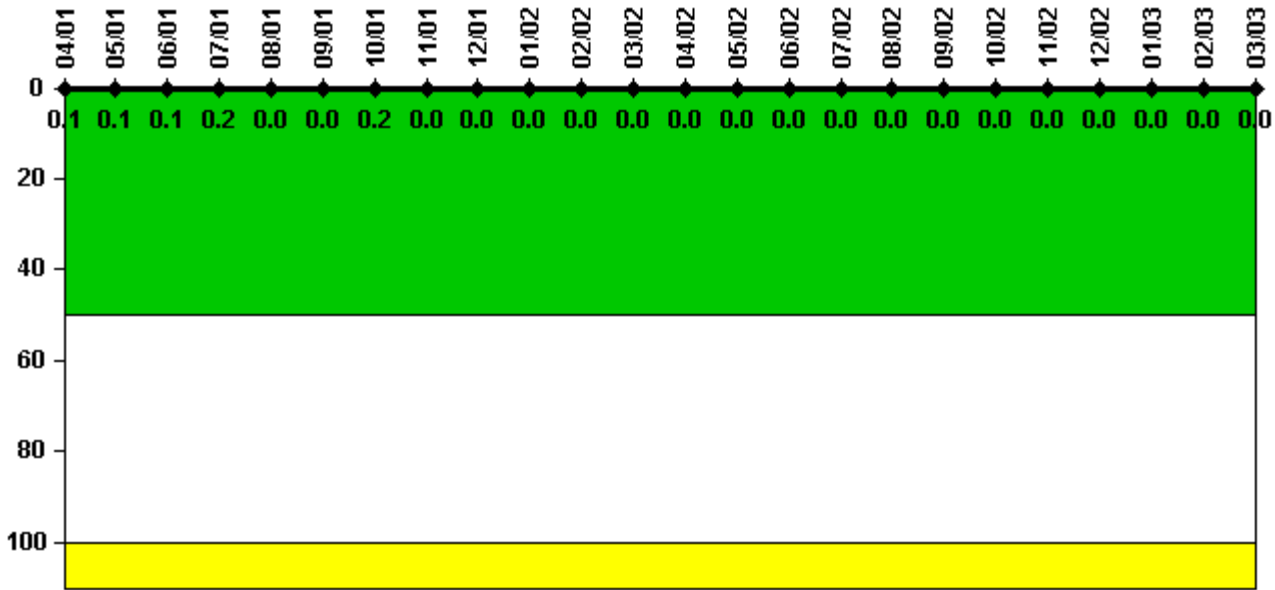
Thresholds: White > 6.0

Notes

Safety System Functional Failures (BWR)	2Q/01	3Q/01	4Q/01	1Q/02	2Q/02	3Q/02	4Q/02	1Q/03
Safety System Functional Failures	0	0	0	0	1	0	1	1
Indicator value	0	0	0	0	1	1	2	3

Licensee Comments: none

Reactor Coolant System Activity



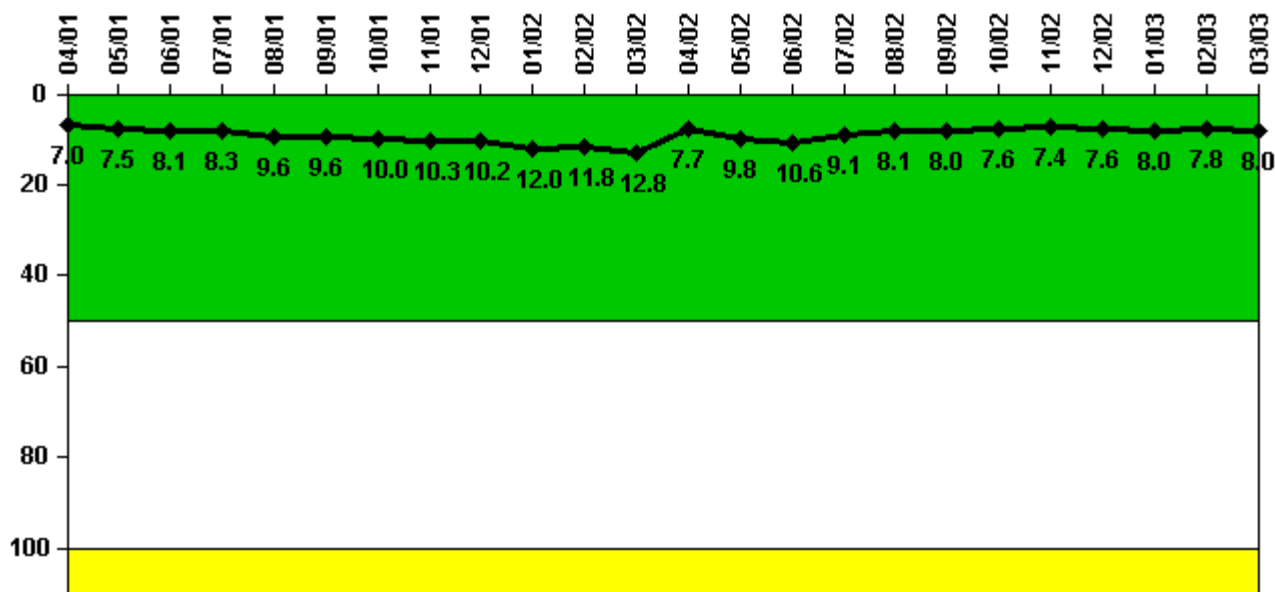
Thresholds: White > 50.0 Yellow > 100.0

Notes

Reactor Coolant System Activity	4/01	5/01	6/01	7/01	8/01	9/01	10/01	11/01	12/01	1/02	2/02	3/02
Maximum activity	0.000107	0.000136	0.000235	0.000333	0.000093	0.000097	0.000313	0.000080	0.000076	0.000090	0.000055	0.000043
Technical specification limit	0.2	0.2	0.2	0.2	0.2	0.2	0.2	0.2	0.2	0.2	0.2	0.2
Indicator value	0.1	0.1	0.1	0.2	0	0	0.2	0	0	0	0	0
Reactor Coolant System Activity	4/02	5/02	6/02	7/02	8/02	9/02	10/02	11/02	12/02	1/03	2/03	3/03
Maximum activity	0.000046	0.000050	0.000047	0.000041	0.000044	0.000057	0.000042	0.000042	0.000038	0.000033	0.000042	0.000030
Technical specification limit	0.2	0.2	0.2	0.2	0.2	0.2	0.2	0.2	0.2	0.2	0.2	0.2
Indicator value	0	0	0	0	0	0	0	0	0	0	0	0

Licensee Comments: none

Reactor Coolant System Leakage



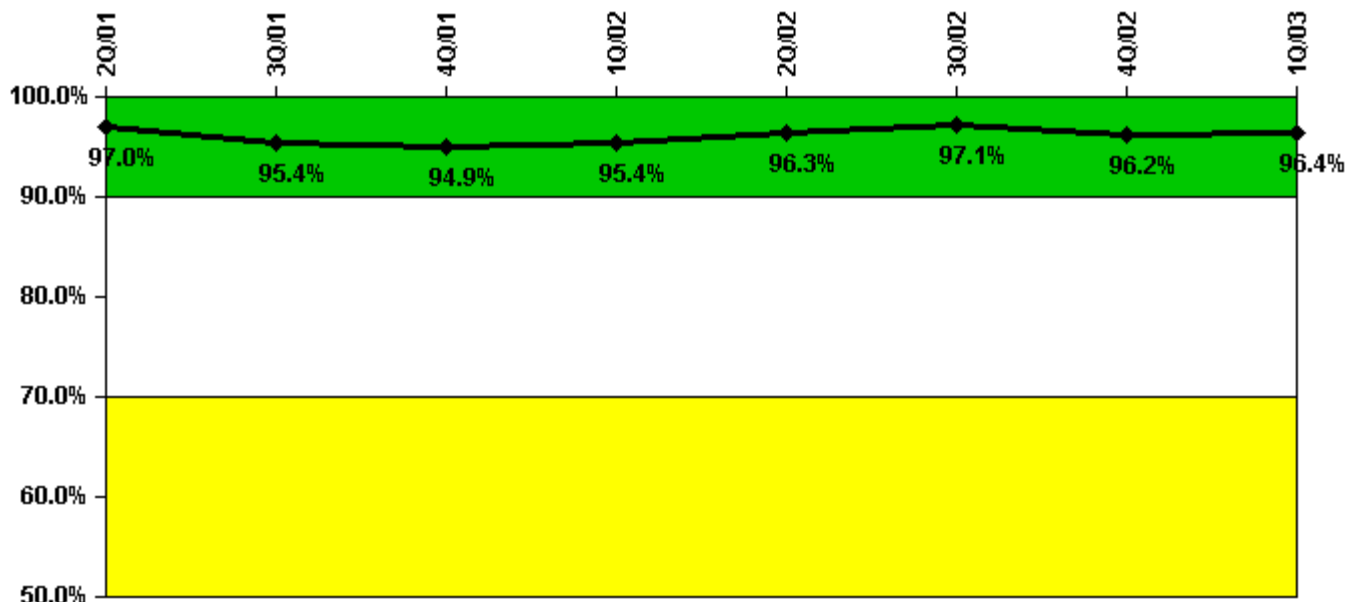
Thresholds: White > 50.0 Yellow > 100.0

Notes

Reactor Coolant System Leakage	4/01	5/01	6/01	7/01	8/01	9/01	10/01	11/01	12/01	1/02	2/02	3/02
Maximum leakage	1.740	1.880	2.020	2.080	2.400	2.400	2.500	2.570	2.560	2.990	2.940	3.190
Technical specification limit	25.0	25.0	25.0	25.0	25.0	25.0	25.0	25.0	25.0	25.0	25.0	25.0
Indicator value	7.0	7.5	8.1	8.3	9.6	9.6	10.0	10.3	10.2	12.0	11.8	12.8
Reactor Coolant System Leakage	4/02	5/02	6/02	7/02	8/02	9/02	10/02	11/02	12/02	1/03	2/03	3/03
Maximum leakage	1.920	2.450	2.660	2.280	2.030	2.010	1.910	1.850	1.890	1.990	1.950	1.990
Technical specification limit	25.0	25.0	25.0	25.0	25.0	25.0	25.0	25.0	25.0	25.0	25.0	25.0
Indicator value	7.7	9.8	10.6	9.1	8.1	8.0	7.6	7.4	7.6	8.0	7.8	8.0

Licensee Comments: none

Drill/Exercise Performance



Thresholds: White < 90.0% Yellow < 70.0%

Notes

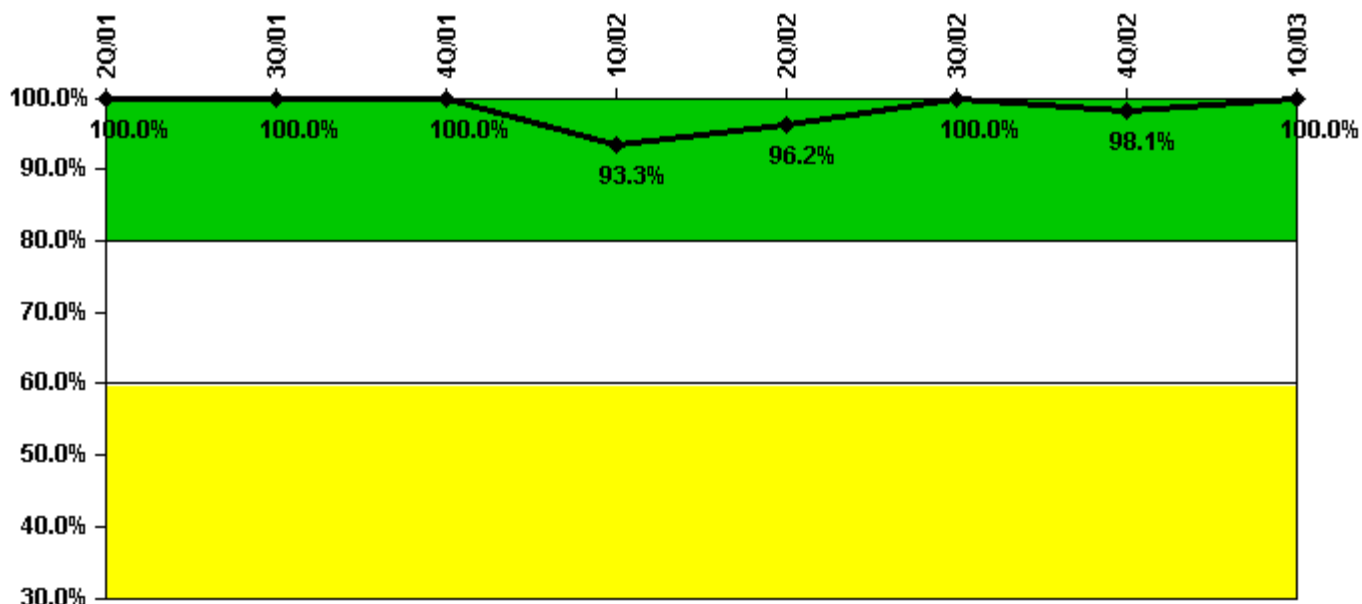
Drill/Exercise Performance	2Q/01	3Q/01	4Q/01	1Q/02	2Q/02	3Q/02	4Q/02	1Q/03
Successful opportunities	45.0	7.0	48.0	0	44.0	55.0	30.0	41.0
Total opportunities	46.0	10.0	50.0	0	44.0	56.0	32.0	42.0
Indicator value	97.0%	95.4%	94.9%	95.4%	96.3%	97.1%	96.2%	96.4%

Licensee Comments:

1Q/03: A revision to 2nd Quarter 2002 data has been submitted. A state notification had been considered missed because, although the notification form noted that there was no release in progress, the blank on the form for type of release had not been marked N/A. This has been determined to be an administrative error that does not constitute a missed notification. The quarterly value is changed from 43 successes out of 44 opportunities to 44 successes out of 44 opportunities.

2Q/02: The historical data for December 2001 has been revised to reflect only one failed opportunity. This is in accordance with the response to the submitted FAQ.

ERO Drill Participation



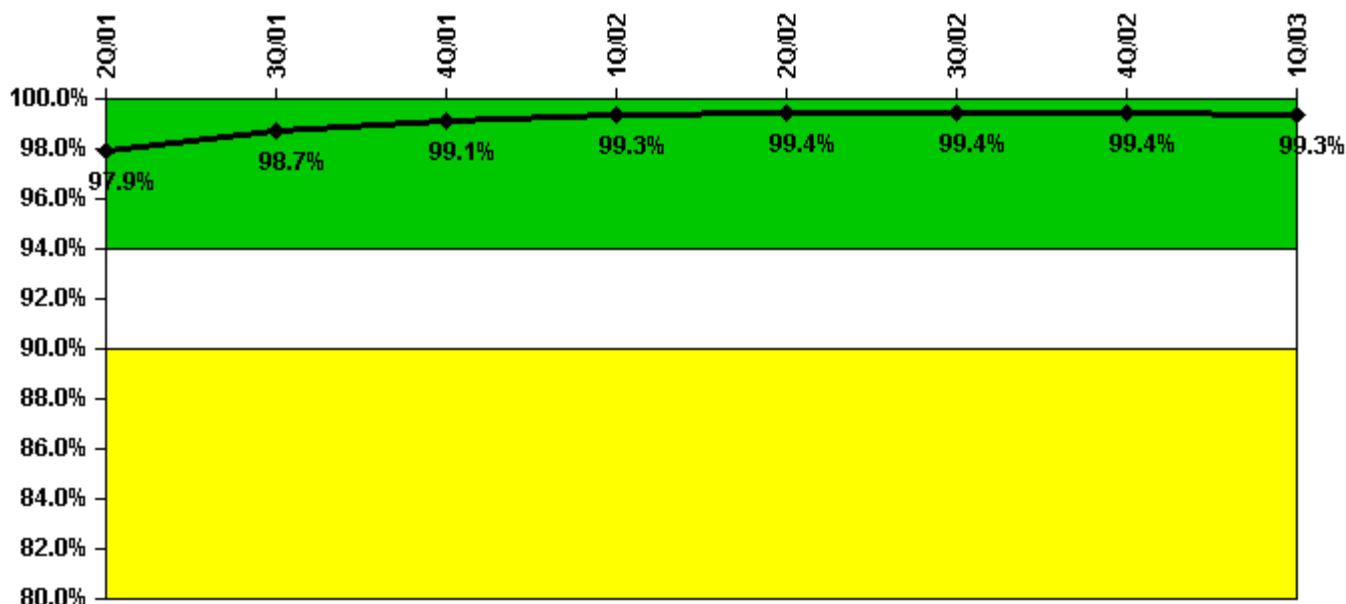
Thresholds: White < 80.0% Yellow < 60.0%

Notes

ERO Drill Participation	2Q/01	3Q/01	4Q/01	1Q/02	2Q/02	3Q/02	4Q/02	1Q/03
Participating Key personnel	66.0	67.0	56.0	42.0	51.0	54.0	52.0	55.0
Total Key personnel	66.0	67.0	56.0	45.0	53.0	54.0	53.0	55.0
Indicator value	100.0%	100.0%	100.0%	93.3%	96.2%	100.0%	98.1%	100.0%

Licensee Comments: none

Alert & Notification System



Thresholds: White < 94.0% Yellow < 90.0%

Notes

Alert & Notification System	2Q/01	3Q/01	4Q/01	1Q/02	2Q/02	3Q/02	4Q/02	1Q/03
Successful siren-tests	3453	3405	3311	3256	3313	3301	3306	3251
Total sirens-tests	3484	3432	3328	3276	3328	3328	3328	3276
Indicator value	97.9%	98.7%	99.1%	99.3%	99.4%	99.4%	99.4%	99.3%

Licensee Comments: none

Occupational Exposure Control Effectiveness



Thresholds: White > 2.0 Yellow > 5.0

Notes

Occupational Exposure Control Effectiveness	2Q/01	3Q/01	4Q/01	1Q/02	2Q/02	3Q/02	4Q/02	1Q/03
High radiation area occurrences	0	0	0	0	0	0	0	0
Very high radiation area occurrences	0	0	0	0	0	0	0	0
Unintended exposure occurrences	0	0	0	0	0	0	0	0
Indicator value	0	0	0	0	0	0	0	0

Licensee Comments: none

RETS/ODCM Radiological Effluent



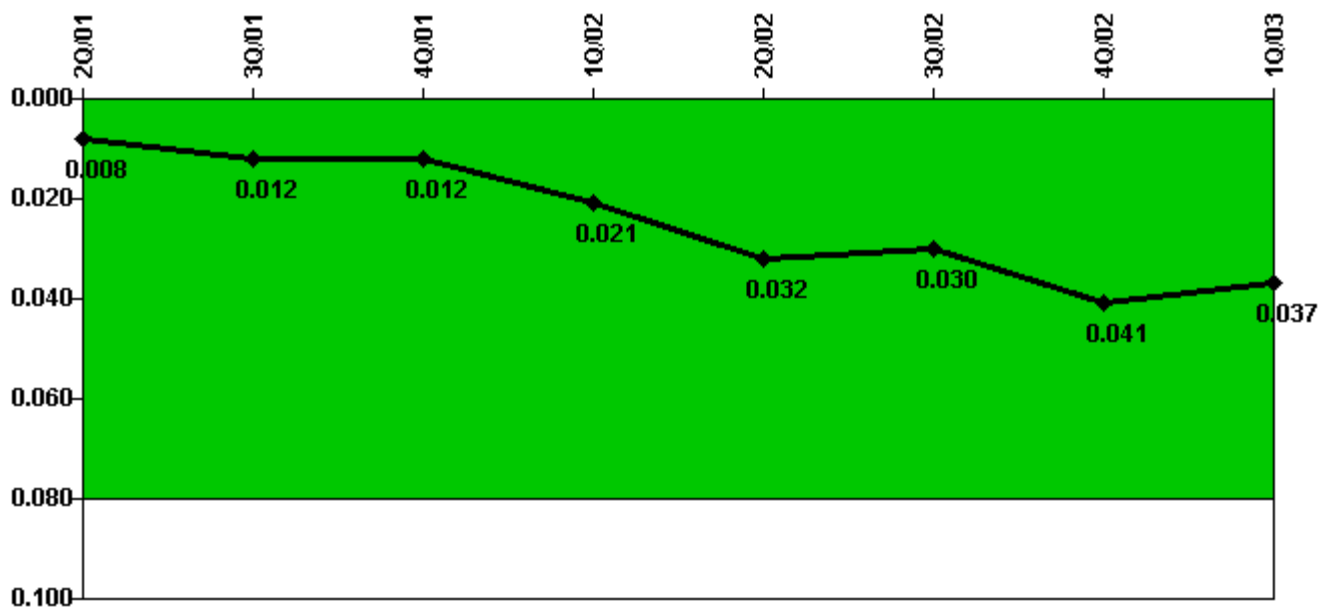
Thresholds: White > 1.0 Yellow > 3.0

Notes

RETS/ODCM Radiological Effluent	2Q/01	3Q/01	4Q/01	1Q/02	2Q/02	3Q/02	4Q/02	1Q/03
RETS/ODCM occurrences	0	0	0	0	0	0	0	0
Indicator value	0	0	0	0	0	0	0	0

Licensee Comments: none

Protected Area Security Performance Index



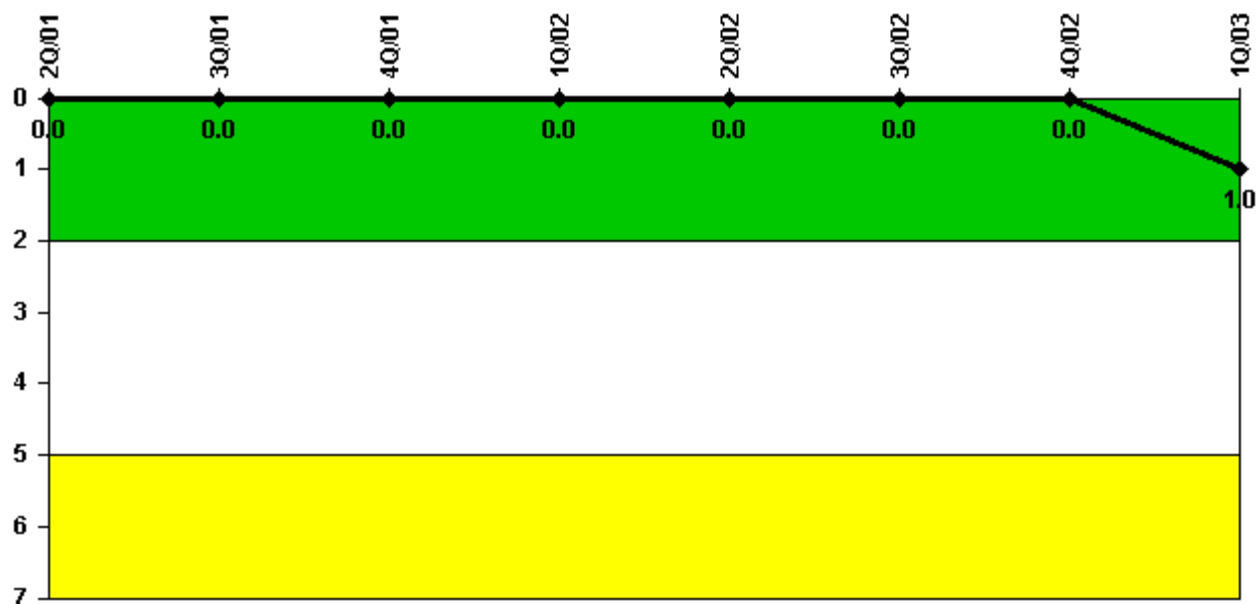
Thresholds: White > 0.080

Notes

Protected Area Security Performance Index	2Q/01	3Q/01	4Q/01	1Q/02	2Q/02	3Q/02	4Q/02	1Q/03
IDS compensatory hours	37.60	80.50	46.40	192.60	221.90	61.20	200.10	110.80
CCTV compensatory hours	0	13.9	1.4	0	0.3	1.6	39.5	11.3
IDS normalization factor	1.00	1.00	1.00	1.00	1.00	1.00	1.00	1.00
CCTV normalization factor	1.0	1.0	1.0	1.0	1.0	1.0	1.0	1.0
Index Value	0.008	0.012	0.012	0.021	0.032	0.030	0.041	0.037

Licensee Comments: none

Personnel Screening Program



Thresholds: White > 2.0 Yellow > 5.0

Notes

Personnel Screening Program	2Q/01	3Q/01	4Q/01	1Q/02	2Q/02	3Q/02	4Q/02	1Q/03
Program failures	0	0	0	0	0	0	0	1
Indicator value	0	0	0	0	0	0	0	1

Licensee Comments: none

FFD/Personnel Reliability



Thresholds: White > 2.0 Yellow > 5.0

Notes

FFD/Personnel Reliability	2Q/01	3Q/01	4Q/01	1Q/02	2Q/02	3Q/02	4Q/02	1Q/03
Program Failures	0	0	0	0	0	0	0	0
Indicator value	0	0	0	0	0	0	0	0

Licensee Comments: none

▲ [PI Summary](#) | [Inspection Findings Summary](#) | [Reactor Oversight Process](#)

Last Modified: April 22, 2003