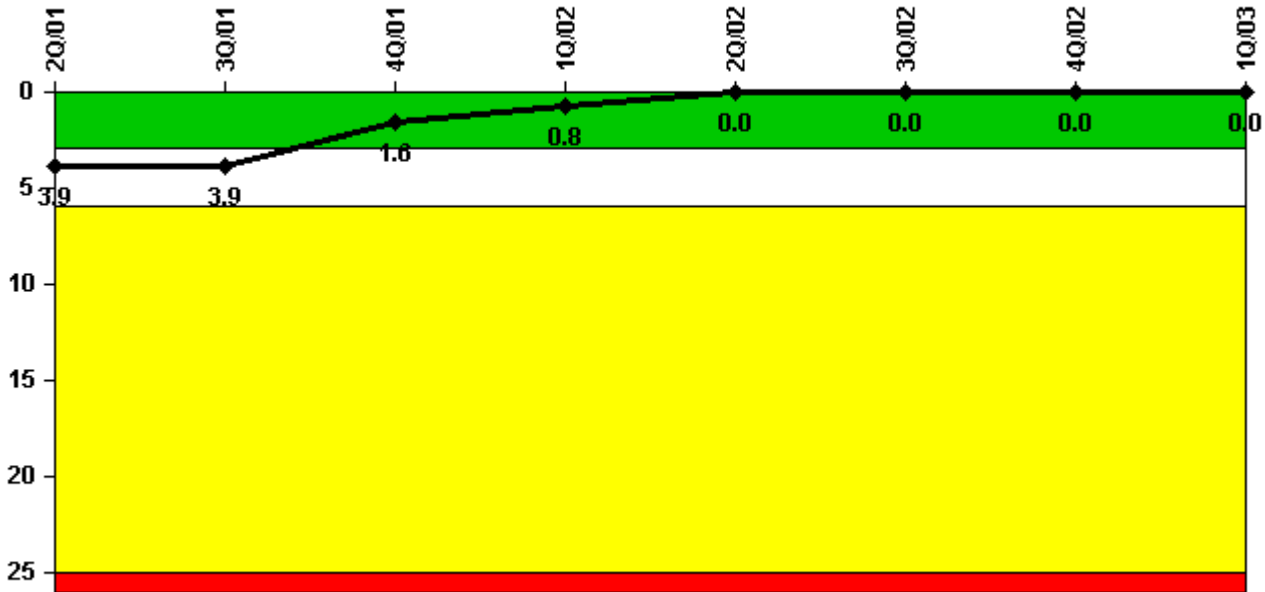


## Point Beach 2

### 1Q/2003 Performance Indicators

Licensee's General Comments: none

#### Unplanned Scrams per 7000 Critical Hrs



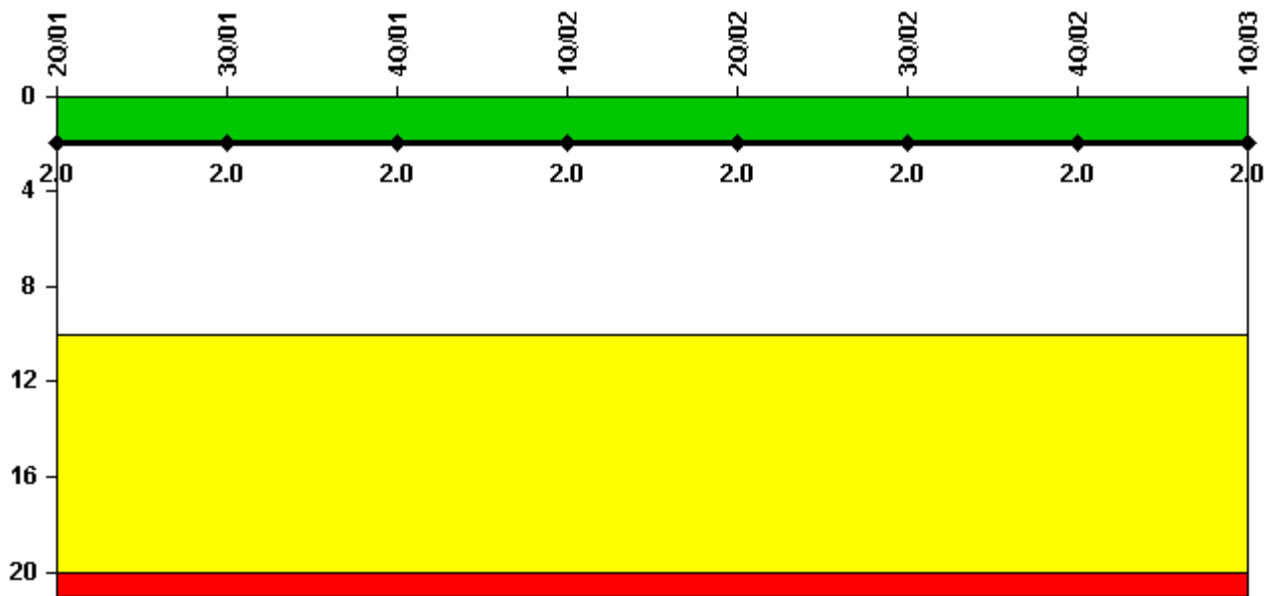
**Thresholds: White > 3.0 Yellow > 6.0 Red > 25.0**

#### Notes

Unplanned Scrams per 7000 Critical Hrs	2Q/01	3Q/01	4Q/01	1Q/02	2Q/02	3Q/02	4Q/02	1Q/03
Unplanned scrams	1.0	0	0	0	0	0	0	0
Critical hours	2143.2	2208.0	2209.0	2096.6	1458.0	2208.0	2209.0	2160.0
Indicator value	3.9	3.9	1.6	0.8	0	0	0	0

Licensee Comments: none

### Scrams with Loss of Normal Heat Removal



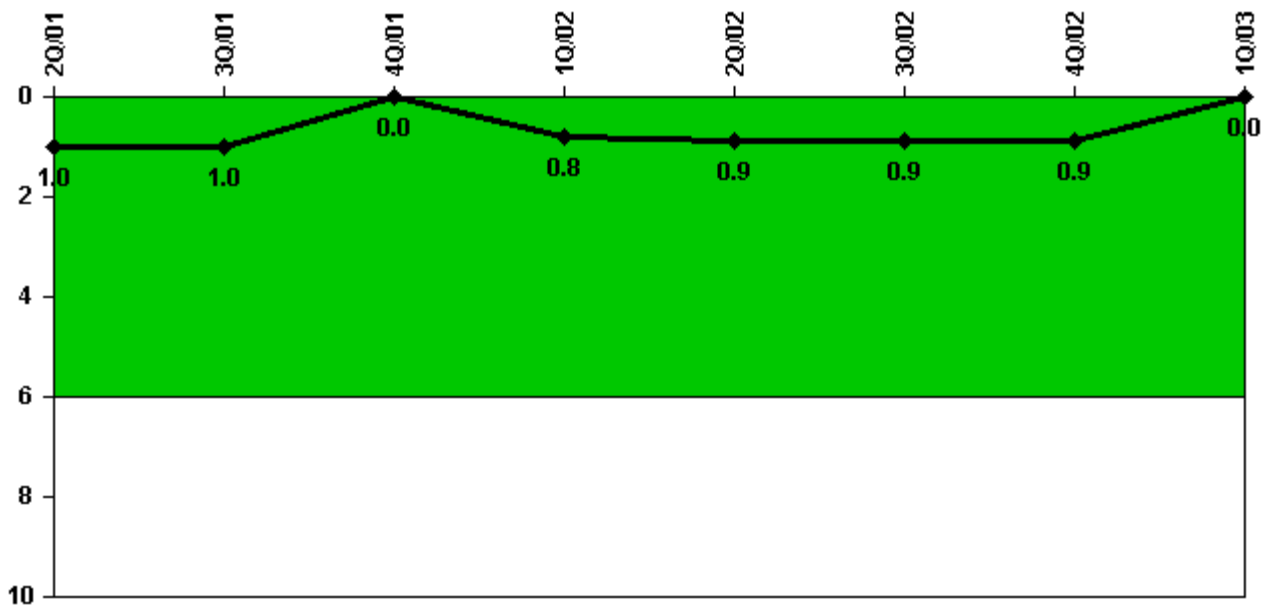
Thresholds: White > 2.0 Yellow > 10.0 Red > 20.0

#### Notes

Scrams with Loss of Normal Heat Removal	2Q/01	3Q/01	4Q/01	1Q/02	2Q/02	3Q/02	4Q/02	1Q/03
Scrams	1.0	0	0	0	0	0	0	0
Indicator value	2.0	2.0	2.0	2.0	2.0	2.0	2.0	2.0

Licensee Comments: none

### Unplanned Power Changes per 7000 Critical Hrs



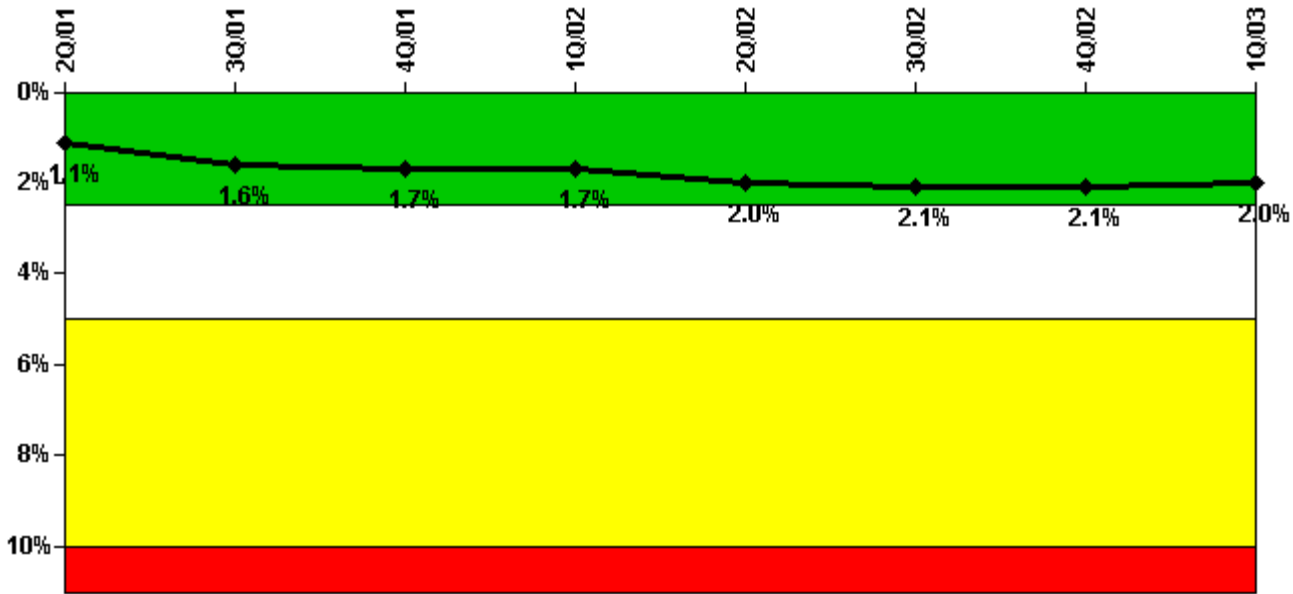
Thresholds: White > 6.0

#### Notes

Unplanned Power Changes per 7000 Critical Hrs	2Q/01	3Q/01	4Q/01	1Q/02	2Q/02	3Q/02	4Q/02	1Q/03
Unplanned power changes	0	0	0	1.0	0	0	0	0
Critical hours	2143.2	2208.0	2209.0	2096.6	1458.0	2208.0	2209.0	2160.0
Indicator value	1.0	1.0	0	0.8	0.9	0.9	0.9	0

Licensee Comments: none

### Safety System Unavailability, Emergency AC Power



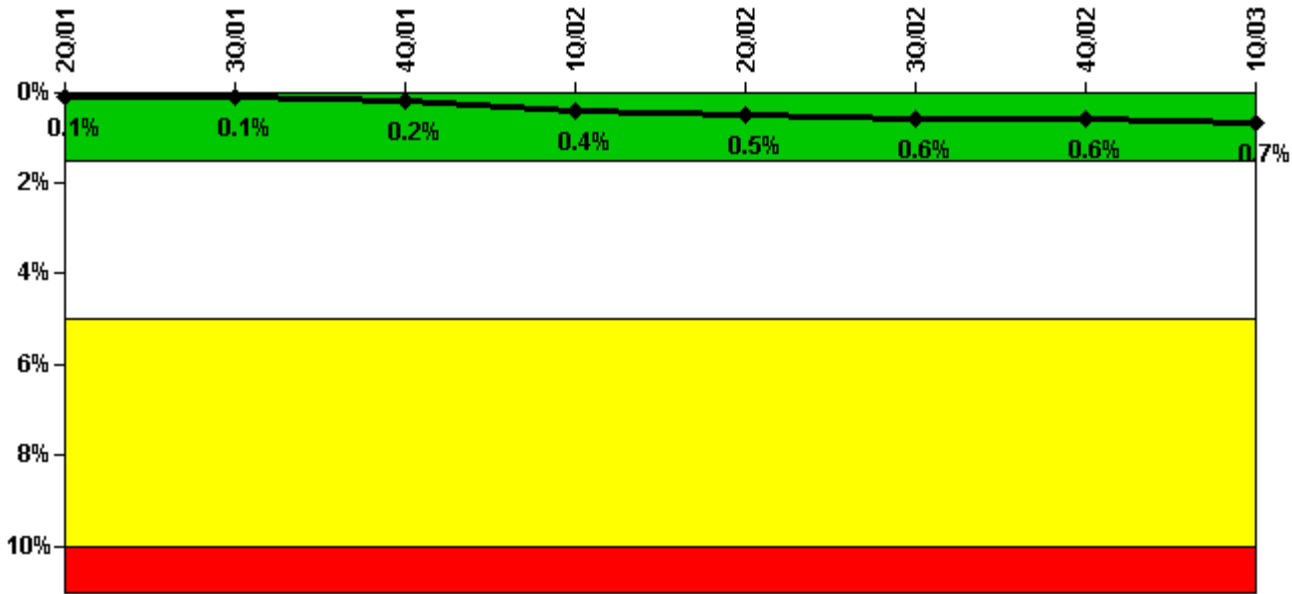
Thresholds: White > 2.5% Yellow > 5.0% Red > 10.0%

#### Notes

Safety System Unavailability, Emergency AC Power	2Q/01	3Q/01	4Q/01	1Q/02	2Q/02	3Q/02	4Q/02	1Q/03
<b>Train 1</b>								
Planned unavailable hours	23.61	18.78	14.67	60.77	65.21	22.22	14.03	15.10
Unplanned unavailable hours	0	0	0.43	0	7.62	0	0	0.77
Fault exposure hours	0	0	0	0	0	0	0	0
Effective Reset hours	0	0	0	0	0	0	0	0
Required hours	2183.00	2208.00	2209.00	2160.00	2183.00	2208.00	2209.00	2160.00
<b>Train 2</b>								
Planned unavailable hours	34.30	16.36	62.83	12.02	77.16	31.41	8.43	10.59
Unplanned unavailable hours	0	0	0	5.98	0	2.20	0	0
Fault exposure hours	0	333.68	0	0	0	0	0	0
Effective Reset hours	0	0	0	0	0	0	0	0
Required hours	2183.00	2208.00	2209.00	2160.00	2183.00	2208.00	2209.00	2160.00
Indicator value	1.1%	1.6%	1.7%	1.7%	2.0%	2.1%	2.1%	2.0%

Licensee Comments: none

### Safety System Unavailability, High Pressure Injection System (HPSI)



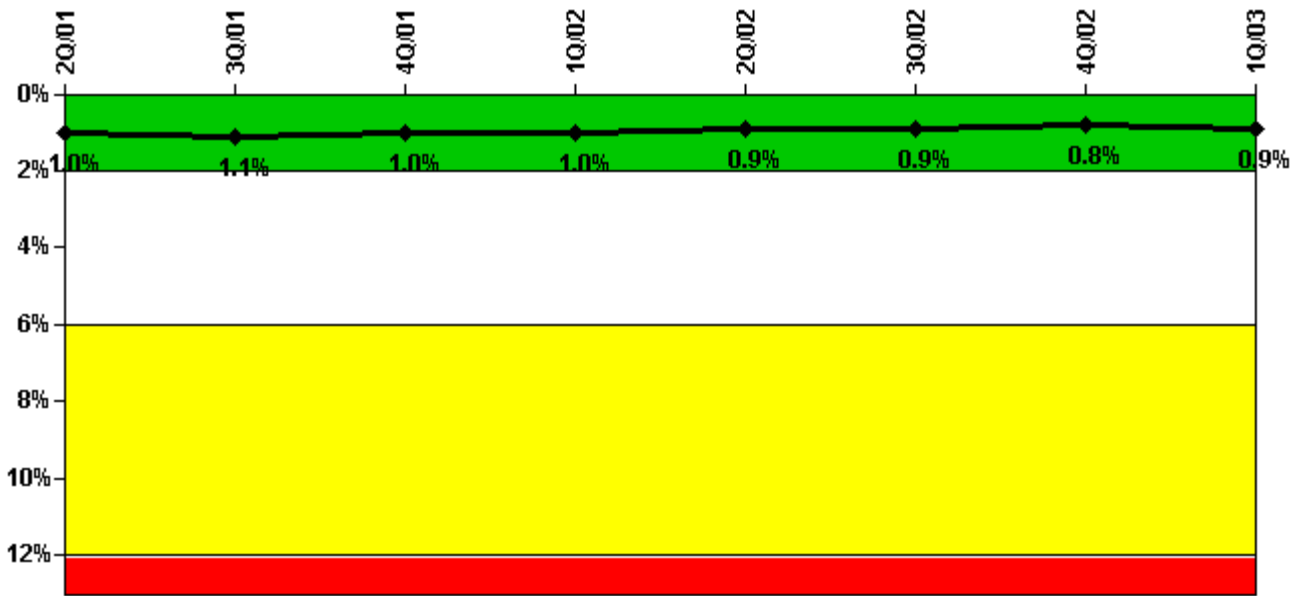
Thresholds: White > 1.5% Yellow > 5.0% Red > 10.0%

**Notes**

Safety System Unavailability, High Pressure Injection System (HPSI)	2Q/01	3Q/01	4Q/01	1Q/02	2Q/02	3Q/02	4Q/02	1Q/03
<b>Train 1</b>								
Planned unavailable hours	3.20	4.87	11.02	21.05	9.38	9.39	22.74	16.56
Unplanned unavailable hours	0	0	0	0	0	0	0	0
Fault exposure hours	0	0	0	0	0	0	0	0
Effective Reset hours	0	0	0	0	0	0	0	0
Required hours	2143.20	2208.00	2209.00	2118.00	1541.00	2208.00	2209.00	2160.00
<b>Train 2</b>								
Planned unavailable hours	0.77	3.38	8.38	51.46	22.92	8.83	3.87	4.94
Unplanned unavailable hours	0	0	0	72.63	0	0	0	0
Fault exposure hours	0	0	0	0	0	0	0	0
Effective Reset hours	0	0	0	0	0	0	0	0
Required hours	2143.20	2208.00	2209.00	2118.00	1541.00	2208.00	2209.00	2160.00
<b>Indicator value</b>	<b>0.1%</b>	<b>0.1%</b>	<b>0.2%</b>	<b>0.4%</b>	<b>0.5%</b>	<b>0.6%</b>	<b>0.6%</b>	<b>0.7%</b>

Licensee Comments: none

### Safety System Unavailability, Heat Removal System (AFW)



Thresholds: White > 2.0% Yellow > 6.0% Red > 12.0%

Notes

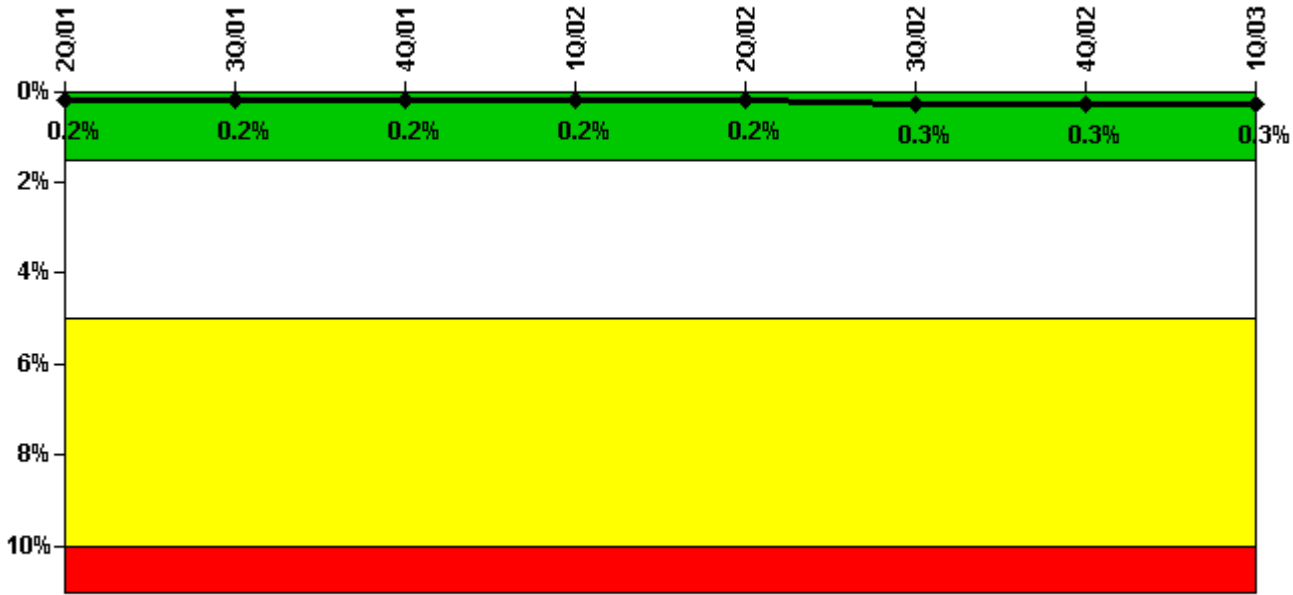
Safety System Unavailability, Heat Removal System (AFW)	2Q/01	3Q/01	4Q/01	1Q/02	2Q/02	3Q/02	4Q/02	1Q/03
<b>Train 1</b>								
Planned unavailable hours	8.44	19.14	5.83	27.18	6.01	4.94	12.29	30.77
Unplanned unavailable hours	19.33	0	0	0	0	5.66	2.63	0.20
Fault exposure hours	0	0	0	0	0	0	0	0
Effective Reset hours	0	0	0	0	0	0	0	0
Required hours	2183.00	2208.00	2209.00	2117.03	1540.99	2208.00	2209.00	2160.00
<b>Train 2</b>								
Planned unavailable hours	62.40	6.60	3.23	13.06	1.43	32.68	44.55	29.96
Unplanned unavailable hours	0	0	0	0	0	0.10	2.63	0
Fault exposure hours	0	0	0	0	0	0	0	0
Effective Reset hours	0	0	0	0	0	0	0	0
Required hours	2183.00	2208.00	2209.00	2117.03	1540.99	2208.00	2209.00	2160.00
<b>Train 3</b>								
Planned unavailable hours	45.20	13.69	2.02	13.82	0.55	7.72	36.08	22.19
Unplanned unavailable hours	17.58	0	0	8.47	0	0.10	2.63	0
Fault exposure hours	0	0	0	0	0	0	0	0
Effective Reset hours	0	0	0	0	0	0	0	0
Required hours	2183.00	2208.00	2209.00	2117.03	1540.99	2208.00	2209.00	2160.00
<b>Indicator value</b>	<b>1.0%</b>	<b>1.1%</b>	<b>1.0%</b>	<b>1.0%</b>	<b>0.9%</b>	<b>0.9%</b>	<b>0.8%</b>	<b>0.9%</b>

Licensee Comments:

1Q/03: FAQ 34.5 has been submitted concerning the application of fault exposure hours to the orifice plugging

issue on the AFW recirculation line.

### Safety System Unavailability, Residual Heat Removal System



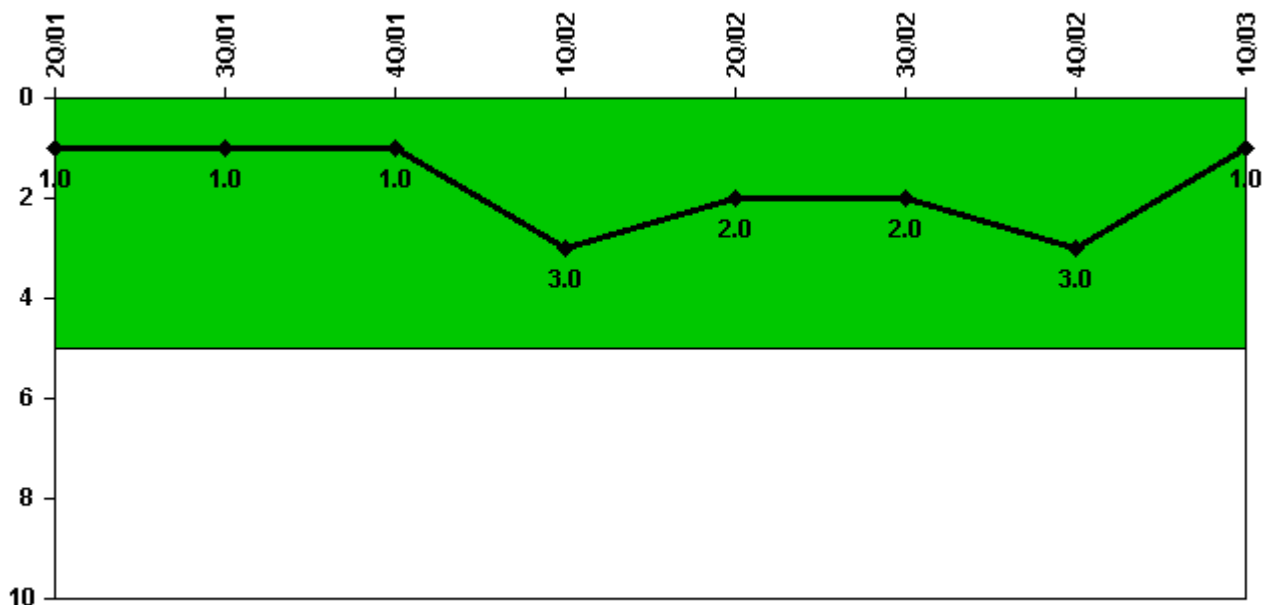
Thresholds: White > 1.5% Yellow > 5.0% Red > 10.0%

#### Notes

Safety System Unavailability, Residual Heat Removal System	2Q/01	3Q/01	4Q/01	1Q/02	2Q/02	3Q/02	4Q/02	1Q/03
<b>Train 1</b>								
Planned unavailable hours	0.92	2.80	8.49	2.27	10.58	20.93	2.37	13.49
Unplanned unavailable hours	0	0	0	0	0	0	0	0
Fault exposure hours	0	0	0	0	0	0	0	0
Effective Reset hours	0	0	0	0	0	0	0	0
Required hours	2183.00	2208.00	2209.00	2160.00	2133.28	2208.00	2209.00	2160.00
<b>Train 2</b>								
Planned unavailable hours	0.78	2.32	6.94	0.59	4.02	1.95	1.76	8.07
Unplanned unavailable hours	0	0	0	0	0	0	25.92	0
Fault exposure hours	0	0	0	0	0	0	0	0
Effective Reset hours	0	0	0	0	0	0	0	0
Required hours	2183.00	2208.00	2209.00	2160.00	2133.28	2208.00	2209.00	2160.00
<b>Indicator value</b>	<b>0.2%</b>	<b>0.2%</b>	<b>0.2%</b>	<b>0.2%</b>	<b>0.2%</b>	<b>0.3%</b>	<b>0.3%</b>	<b>0.3%</b>

Licensee Comments: none

### Safety System Functional Failures (PWR)



Thresholds: White > 5.0

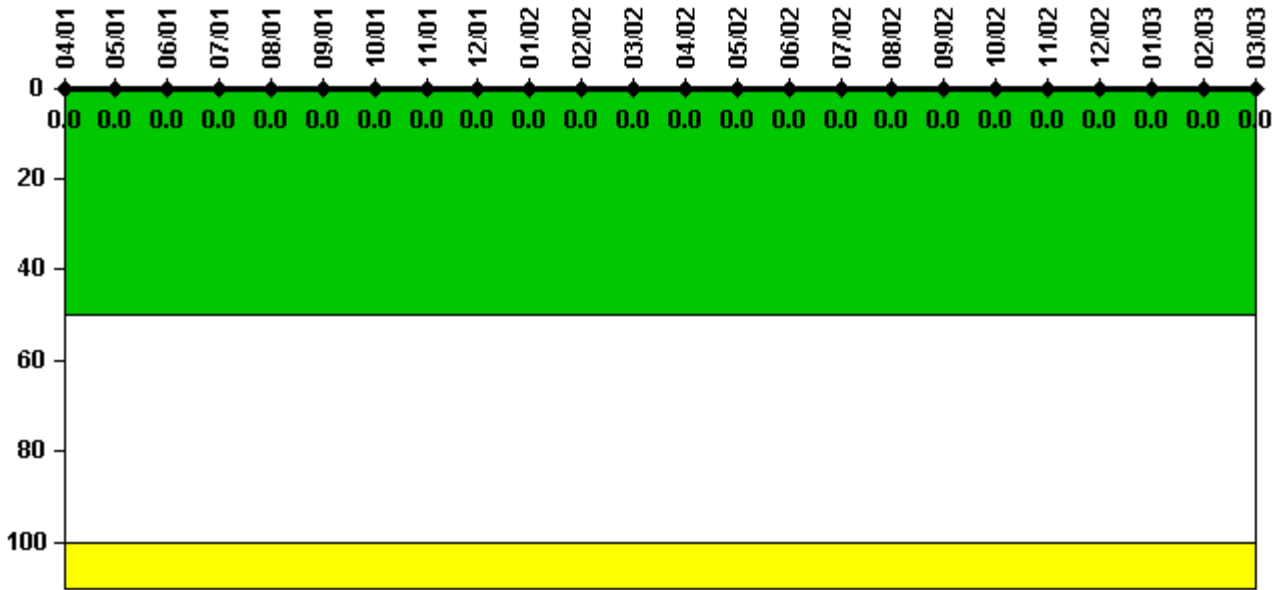
#### Notes

Safety System Functional Failures (PWR)	2Q/01	3Q/01	4Q/01	1Q/02	2Q/02	3Q/02	4Q/02	1Q/03
Safety System Functional Failures	1	0	0	2	0	0	1	0
Indicator value	1	1	1	3	2	2	3	1

Licensee Comments: none



### Reactor Coolant System Activity



Thresholds: White > 50.0 Yellow > 100.0

**Notes**

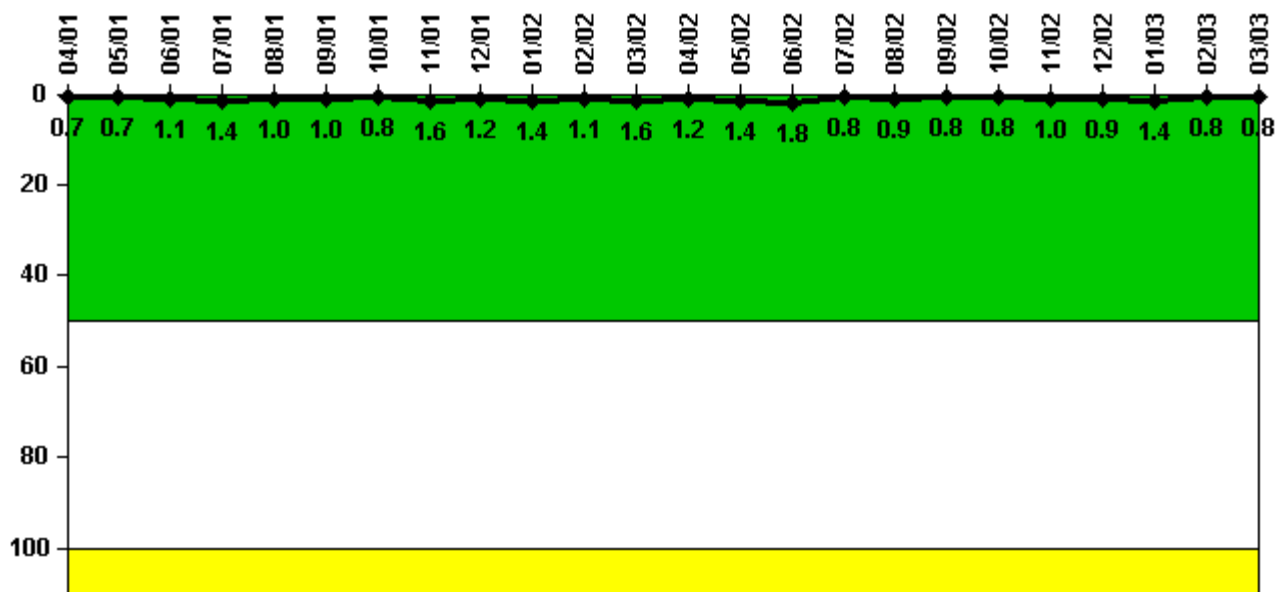
Reactor Coolant System Activity	4/01	5/01	6/01	7/01	8/01	9/01	10/01	11/01	12/01	1/02	2/02	3/02
Maximum activity	0.000294	0.000297	0.000291	0.000350	0.000306	0.000284	0.000280	0.000289	0.000298	0.000332	0.000321	0.000355
Technical specification limit	0.8	0.8	0.8	0.8	0.8	0.8	0.8	0.8	0.8	0.8	0.8	0.8
Indicator value	0	0	0	0	0	0	0	0	0	0	0	0

Reactor Coolant System Activity	4/02	5/02	6/02	7/02	8/02	9/02	10/02	11/02	12/02	1/03	2/03	3/03
Maximum activity	0.000350	0.000193	0.000198	0.000213	0.000214	0.000231	0.000248	0.000251	0.000258	0.000268	0.000290	0.000293
Technical specification limit	0.8	0.8	0.8	0.8	0.8	0.8	0.8	0.8	0.8	0.8	0.8	0.8
Indicator value	0	0	0	0	0	0	0	0	0	0	0	0

Licensee Comments: none

### Reactor Coolant System Leakage



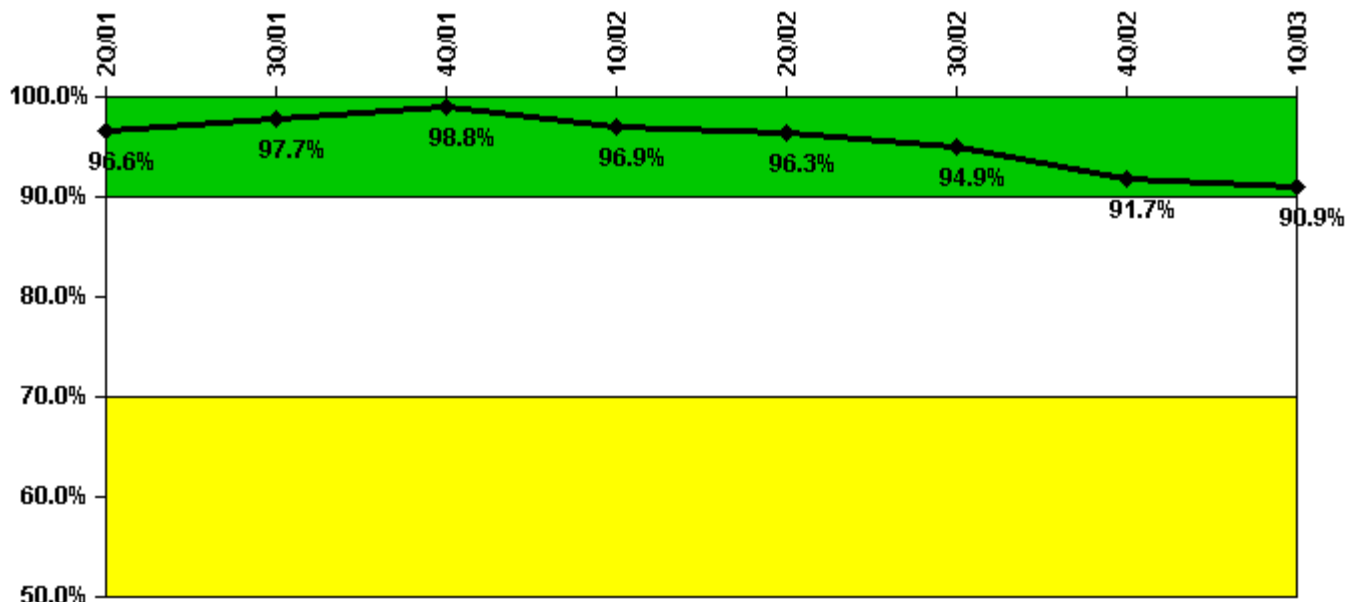
Thresholds: White > 50.0 Yellow > 100.0

#### Notes

Reactor Coolant System Leakage	4/01	5/01	6/01	7/01	8/01	9/01	10/01	11/01	12/01	1/02	2/02	3/02
Maximum leakage	0.066	0.071	0.105	0.136	0.100	0.104	0.079	0.162	0.123	0.140	0.110	0.158
Technical specification limit	10.0	10.0	10.0	10.0	10.0	10.0	10.0	10.0	10.0	10.0	10.0	10.0
Indicator value	0.7	0.7	1.1	1.4	1.0	1.0	0.8	1.6	1.2	1.4	1.1	1.6
Reactor Coolant System Leakage	4/02	5/02	6/02	7/02	8/02	9/02	10/02	11/02	12/02	1/03	2/03	3/03
Maximum leakage	0.120	0.140	0.180	0.080	0.092	0.080	0.077	0.100	0.090	0.140	0.079	0.080
Technical specification limit	10.0	10.0	10.0	10.0	10.0	10.0	10.0	10.0	10.0	10.0	10.0	10.0
Indicator value	1.2	1.4	1.8	0.8	0.9	0.8	0.8	1.0	0.9	1.4	0.8	0.8

Licensee Comments: none

### Drill/Exercise Performance



Thresholds: White < 90.0% Yellow < 70.0%

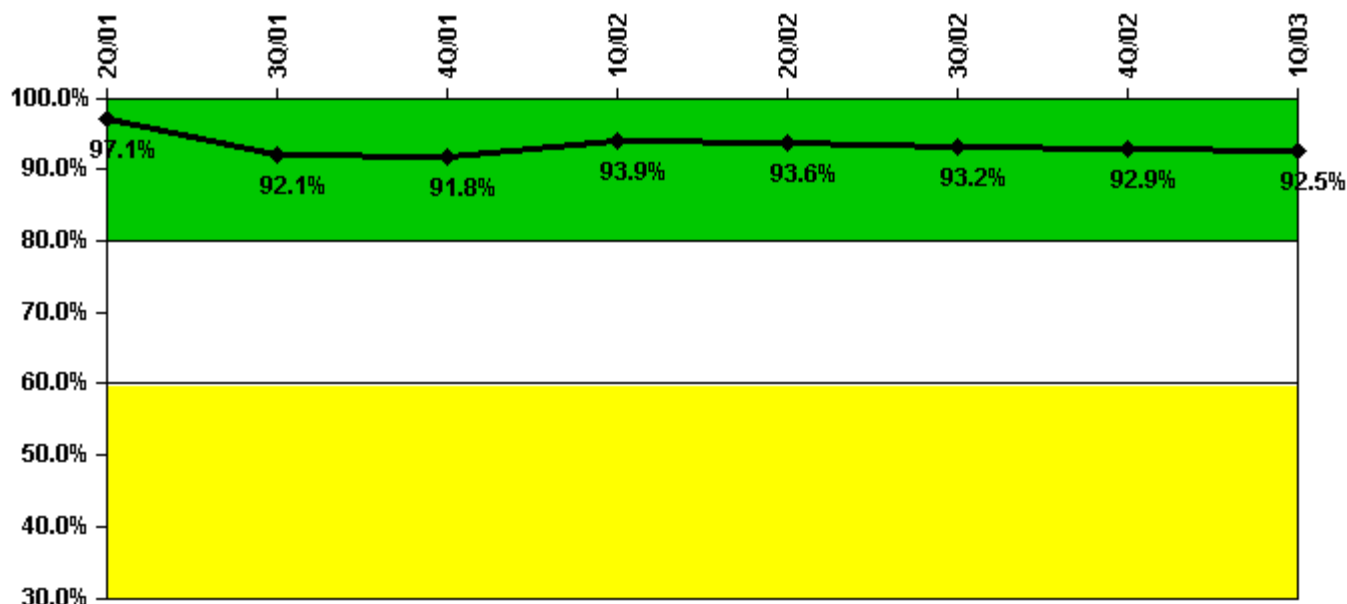
#### Notes

Drill/Exercise Performance	2Q/01	3Q/01	4Q/01	1Q/02	2Q/02	3Q/02	4Q/02	1Q/03
Successful opportunities	2.0	4.0	15.0	10.0	0	9.0	0	0
Total opportunities	2.0	4.0	16.0	12.0	0	10.0	0	0
Indicator value	96.6%	97.7%	98.8%	96.9%	96.3%	94.9%	91.7%	90.9%

Licensee Comments:

1Q/02: An internal self assessment conducted by Emergency Planning during December 2002 and January 2003, identified an opportunity that was incorrectly identified and reported as a success in 1Q02. This change report corrects the total number of successes for 1Q02. This change does not affect the color of this indicator.

### ERO Drill Participation



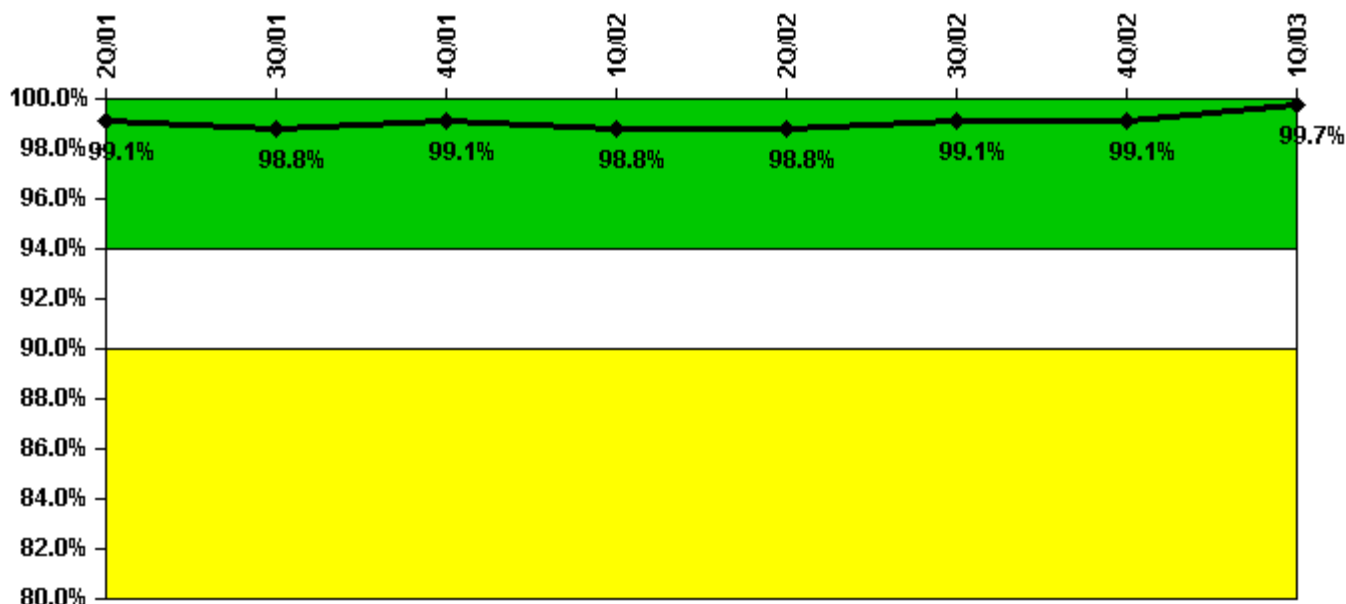
Thresholds: White < 80.0% Yellow < 60.0%

#### Notes

ERO Drill Participation	2Q/01	3Q/01	4Q/01	1Q/02	2Q/02	3Q/02	4Q/02	1Q/03
Participating Key personnel	34.0	35.0	45.0	46.0	44.0	41.0	39.0	37.0
Total Key personnel	35.0	38.0	49.0	49.0	47.0	44.0	42.0	40.0
Indicator value	97.1%	92.1%	91.8%	93.9%	93.6%	93.2%	92.9%	92.5%

Licensee Comments: none

### Alert & Notification System



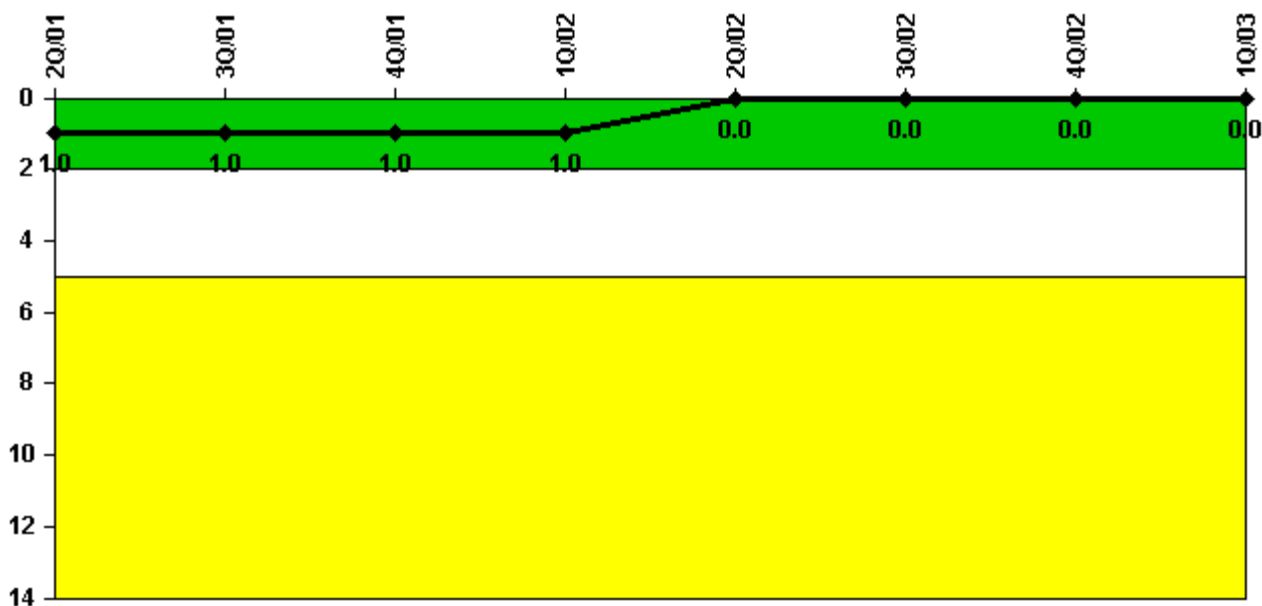
Thresholds: White < 94.0% Yellow < 90.0%

#### Notes

Alert & Notification System	2Q/01	3Q/01	4Q/01	1Q/02	2Q/02	3Q/02	4Q/02	1Q/03
Successful siren-tests	83	83	84	82	83	84	84	84
Total sirens-tests	84	84	84	84	84	84	84	84
Indicator value	99.1%	98.8%	99.1%	98.8%	98.8%	99.1%	99.1%	99.7%

Licensee Comments: none

### Occupational Exposure Control Effectiveness



Thresholds: White > 2.0 Yellow > 5.0

#### Notes

Occupational Exposure Control Effectiveness	2Q/01	3Q/01	4Q/01	1Q/02	2Q/02	3Q/02	4Q/02	1Q/03
High radiation area occurrences	1	0	0	0	0	0	0	0
Very high radiation area occurrences	0	0	0	0	0	0	0	0
Unintended exposure occurrences	0	0	0	0	0	0	0	0
Indicator value	1	1	1	1	0	0	0	0

Licensee Comments: none

### RETS/ODCM Radiological Effluent



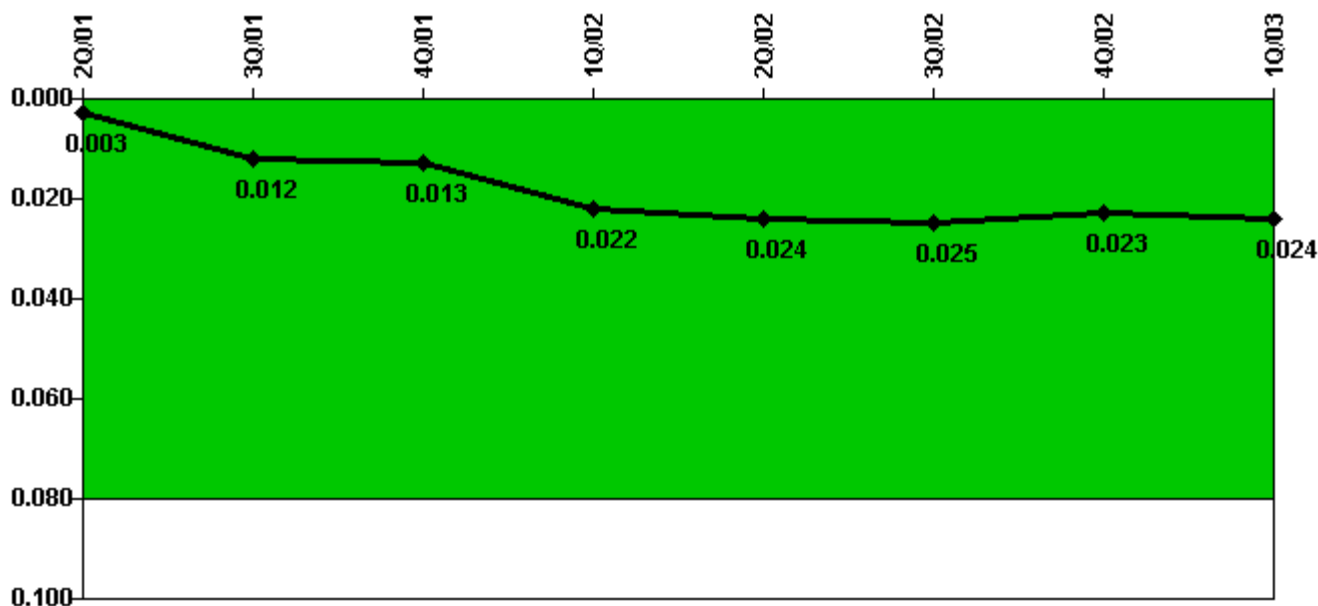
Thresholds: White > 1.0 Yellow > 3.0

#### Notes

RETS/ODCM Radiological Effluent	2Q/01	3Q/01	4Q/01	1Q/02	2Q/02	3Q/02	4Q/02	1Q/03
RETS/ODCM occurrences	0	0	0	0	0	0	0	0
Indicator value	0	0	0	0	0	0	0	0

Licensee Comments: none

### Protected Area Security Performance Index



Thresholds: White > 0.080

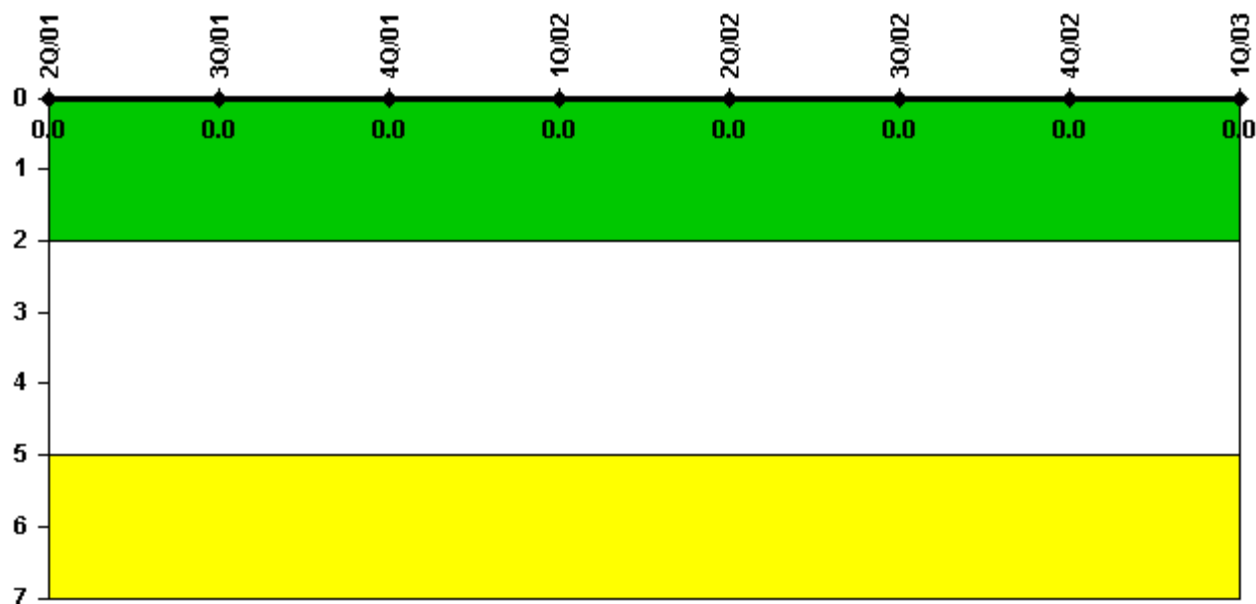
#### Notes

Protected Area Security Performance Index	2Q/01	3Q/01	4Q/01	1Q/02	2Q/02	3Q/02	4Q/02	1Q/03
IDS compensatory hours	0	109.90	71.30	187.20	51.30	129.90	27.30	214.90
CCTV compensatory hours	0	58.0	0	19.8	0.1	56.4	0.5	16.2
IDS normalization factor	1.20	1.20	1.20	1.20	1.20	1.20	1.20	1.20
CCTV normalization factor	1.0	1.0	1.0	1.0	1.0	1.0	1.0	1.0
Index Value	0.003	0.012	0.013	0.022	0.024	0.025	0.023	0.024

Licensee Comments: none



### Personnel Screening Program



Thresholds: White > 2.0 Yellow > 5.0

#### Notes

Personnel Screening Program	2Q/01	3Q/01	4Q/01	1Q/02	2Q/02	3Q/02	4Q/02	1Q/03
Program failures	0	0	0	0	0	0	0	0
Indicator value	0	0	0	0	0	0	0	0

Licensee Comments: none

### FFD/Personnel Reliability



Thresholds: White > 2.0 Yellow > 5.0

#### Notes

FFD/Personnel Reliability	2Q/01	3Q/01	4Q/01	1Q/02	2Q/02	3Q/02	4Q/02	1Q/03
Program Failures	0	0	0	0	0	0	0	0
Indicator value	0	0	0	0	0	0	0	0

Licensee Comments: none

▲ [PI Summary](#) | [Inspection Findings Summary](#) | [Reactor Oversight Process](#)

Last Modified: April 22, 2003