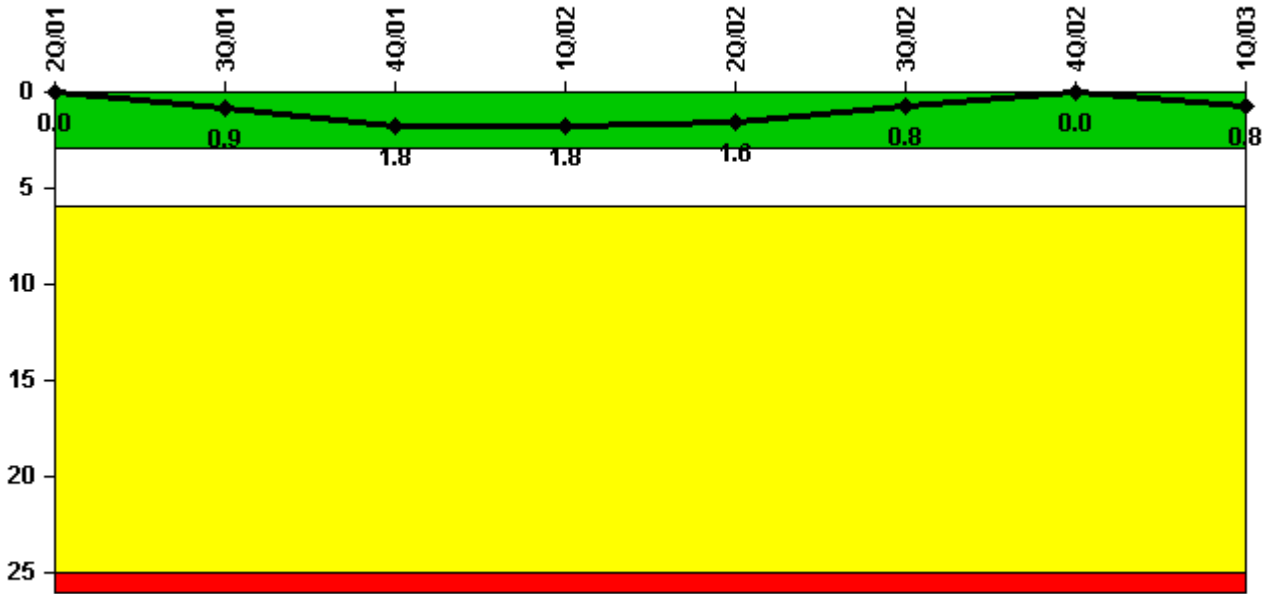


Pilgrim 1

1Q/2003 Performance Indicators

Licensee's General Comments: Pilgrim PI Report for 1Q-2003

Unplanned Scrams per 7000 Critical Hrs



Thresholds: White > 3.0 Yellow > 6.0 Red > 25.0

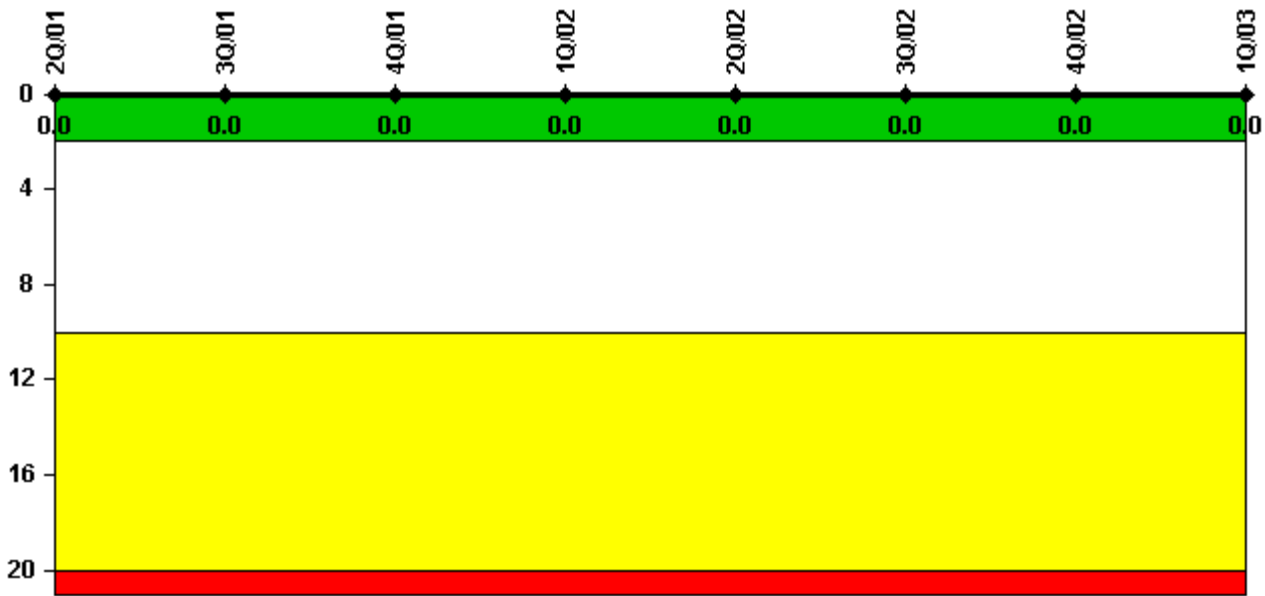
Notes

Unplanned Scrams per 7000 Critical Hrs	2Q/01	3Q/01	4Q/01	1Q/02	2Q/02	3Q/02	4Q/02	1Q/03
Unplanned scrams	0	1.0	1.0	0	0	0	0	1.0
Critical hours	1556.7	2115.4	2140.1	2160.0	2183.0	2208.0	2209.0	1971.0
Indicator value	0	0.9	1.8	1.8	1.6	0.8	0	0.8

Licensee Comments:

1Q/03: Reflects manual scram on 2/21/2003.

Scrams with Loss of Normal Heat Removal



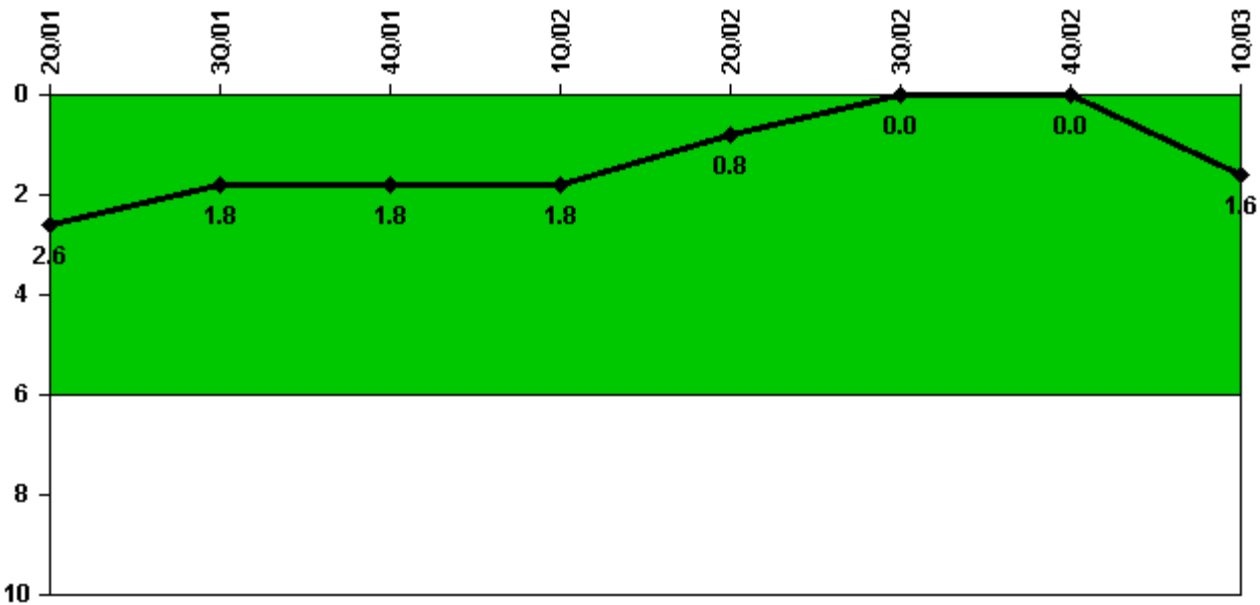
Thresholds: White > 2.0 Yellow > 10.0 Red > 20.0

Notes

Scrams with Loss of Normal Heat Removal	2Q/01	3Q/01	4Q/01	1Q/02	2Q/02	3Q/02	4Q/02	1Q/03
Scrams	0	0	0	0	0	0	0	0
Indicator value	0	0	0	0	0	0	0	0

Licensee Comments: none

Unplanned Power Changes per 7000 Critical Hrs



Thresholds: White > 6.0

Notes

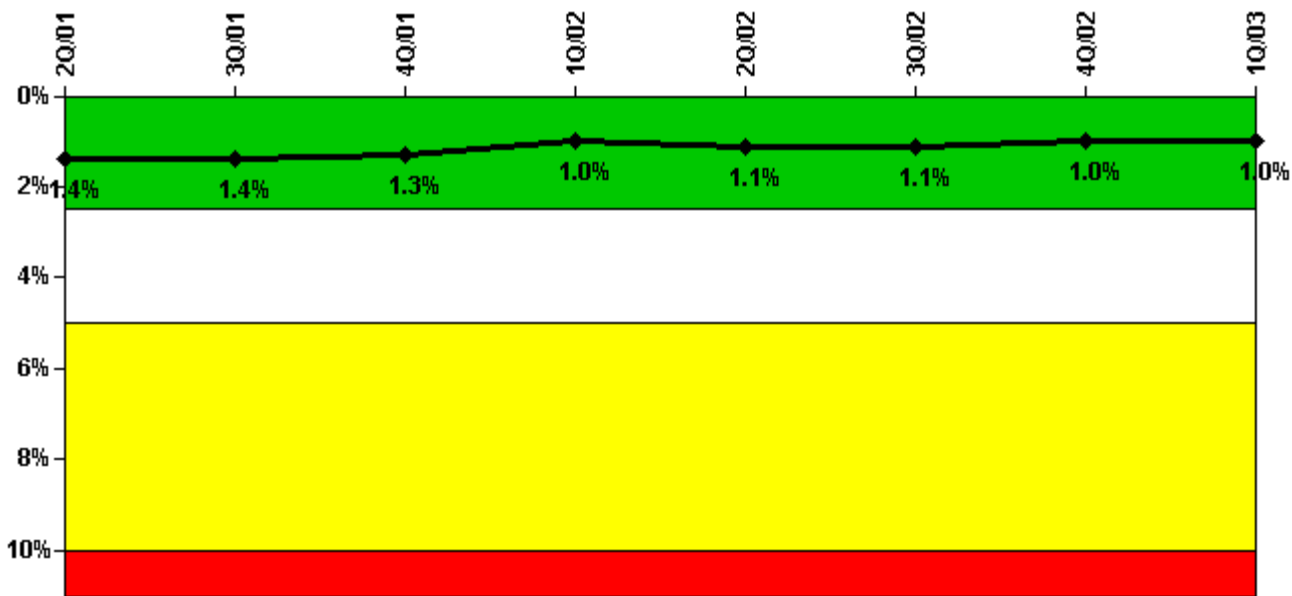
Unplanned Power Changes per 7000 Critical Hrs	2Q/01	3Q/01	4Q/01	1Q/02	2Q/02	3Q/02	4Q/02	1Q/03
Unplanned power changes	1.0	1.0	0	0	0	0	0	2.0
Critical hours	1556.7	2115.4	2140.1	2160.0	2183.0	2208.0	2209.0	1971.0
Indicator value	2.6	1.8	1.8	1.8	0.8	0	0	1.6

Licensee Comments:

1Q/03: Reflects change report for 4Q-2002 and unplanned power changes on 2/20/2003 and 3/3/2003.

4Q/02: This change reflects a correction that deletes a power reduction that did not occur on 10/17/02 that was incorrectly reported as an unplanned power reduction for 4Q-2002. The correction does not affect the performance indicator color (remains Green).

Safety System Unavailability, Emergency AC Power



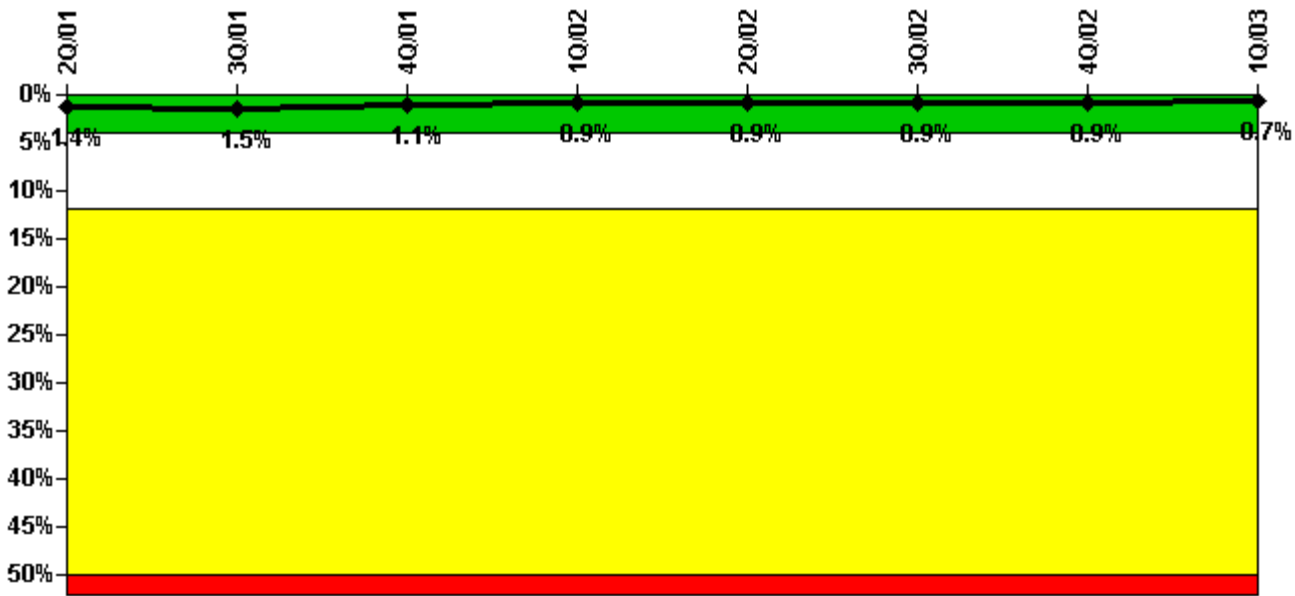
Thresholds: White > 2.5% Yellow > 5.0% Red > 10.0%

Notes

Safety System Unavailability, Emergency AC Power	2Q/01	3Q/01	4Q/01	1Q/02	2Q/02	3Q/02	4Q/02	1Q/03
Train 1								
Planned unavailable hours	0.29	11.05	0.99	1.20	3.55	144.05	1.53	1.01
Unplanned unavailable hours	0	4.87	0	0	4.00	4.70	0	0
Fault exposure hours	0	0	0	0	0	0	0	0
Effective Reset hours	0	0	0	0	0	0	0	0
Required hours	1573.25	2181.70	2154.80	2160.00	2183.00	2208.00	2209.00	2058.00
Train 2								
Planned unavailable hours	1.13	0.68	5.70	0.90	117.66	0.70	0.89	0.80
Unplanned unavailable hours	0	0	0	0	33.75	3.05	0	13.72
Fault exposure hours	0	0	0	0	0	0	0	0
Effective Reset hours	0	0	0	0	0	0	0	0
Required hours	1573.25	2181.70	2154.80	2160.00	2183.00	2208.00	2209.00	2058.00
Indicator value	1.4%	1.4%	1.3%	1.0%	1.1%	1.1%	1.0%	1.0%

Licensee Comments: none

Safety System Unavailability, High Pressure Injection System (HPCI)



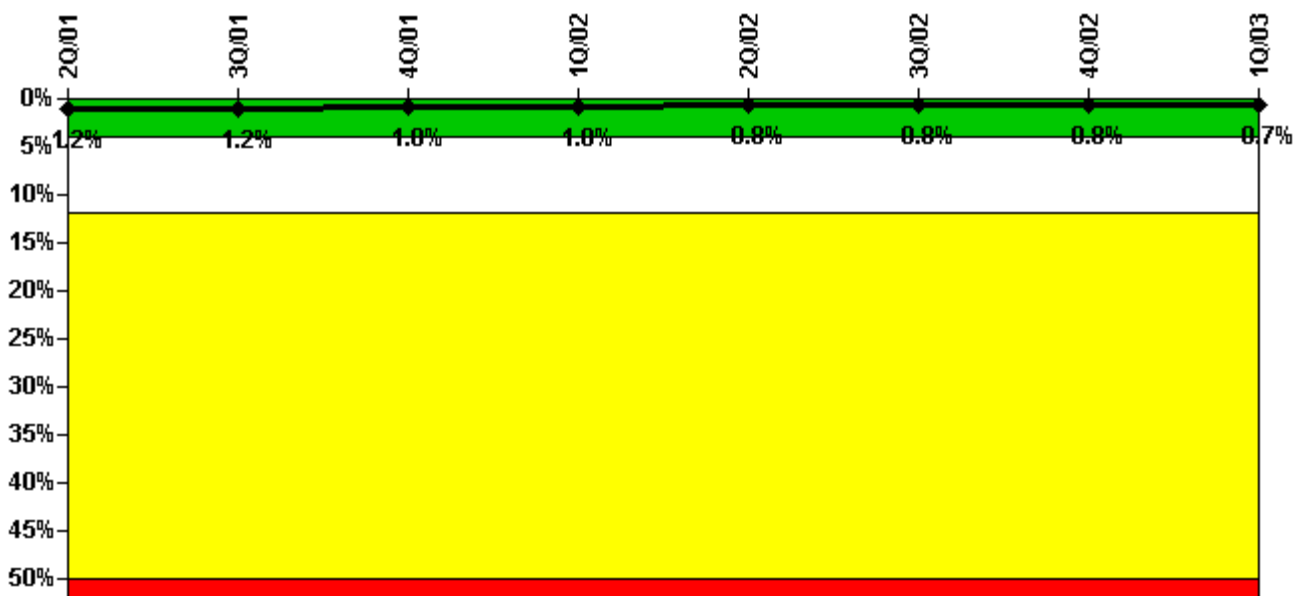
Thresholds: White > 4.0% Yellow > 12.0% Red > 50.0%

Notes

Safety System Unavailability, High Pressure Injection System (HPCI)	2Q/01	3Q/01	4Q/01	1Q/02	2Q/02	3Q/02	4Q/02	1Q/03
Train 1								
Planned unavailable hours	4.06	24.21	7.74	15.31	12.90	18.62	3.62	0.35
Unplanned unavailable hours	0	0	0	0	0	0.50	0	0
Fault exposure hours	0	0	0	0	0	0	0	0
Effective Reset hours	0	0	0	0	0	0	0	0
Required hours	1525.00	2121.00	2148.00	2160.00	2183.00	2208.00	2209.00	2000.75
Indicator value	1.4%	1.5%	1.1%	0.9%	0.9%	0.9%	0.9%	0.7%

Licensee Comments: none

Safety System Unavailability, Heat Removal System (RCIC)



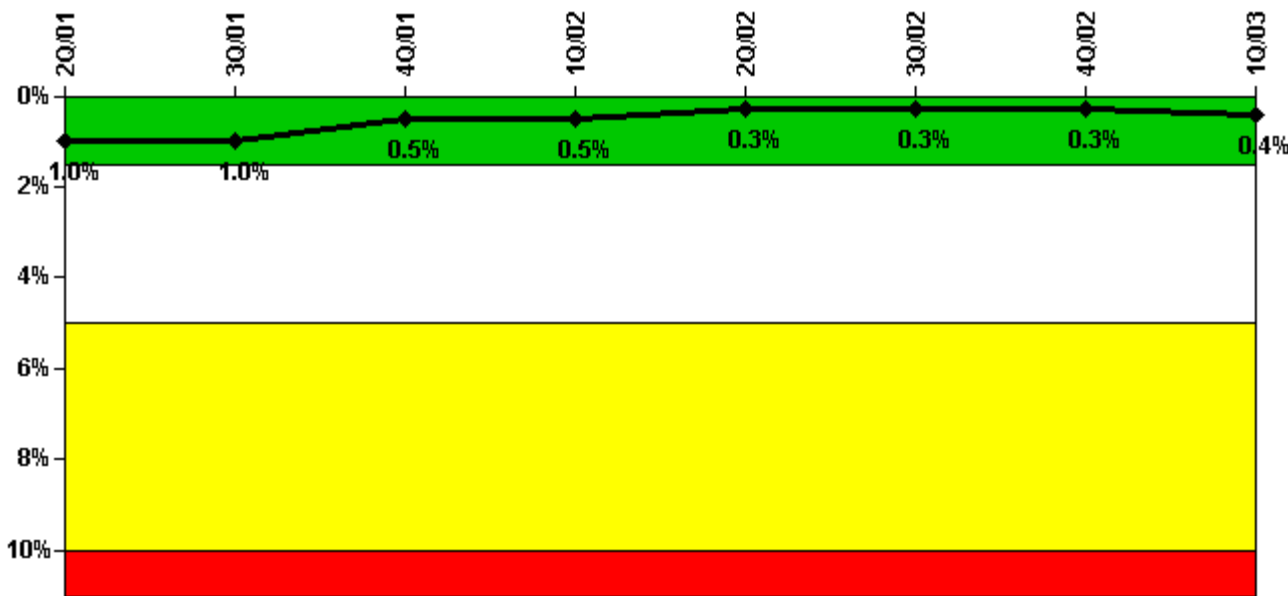
Thresholds: White > 4.0% Yellow > 12.0% Red > 50.0%

Notes

Safety System Unavailability, Heat Removal System (RCIC)	2Q/01	3Q/01	4Q/01	1Q/02	2Q/02	3Q/02	4Q/02	1Q/03
Train 1								
Planned unavailable hours	3.80	13.72	10.75	11.86	7.64	14.28	22.73	19.48
Unplanned unavailable hours	1.40	0.73	0	0	0	0	0	0
Fault exposure hours	0	0	0	0	0	0	0	0
Effective Reset hours	0	0	0	0	0	0	0	0
Required hours	1525.00	2121.00	2148.00	2160.00	2183.00	2208.00	2209.00	2000.75
Indicator value	1.2%	1.2%	1.0%	1.0%	0.8%	0.8%	0.8%	0.7%

Licensee Comments: none

Safety System Unavailability, Residual Heat Removal System



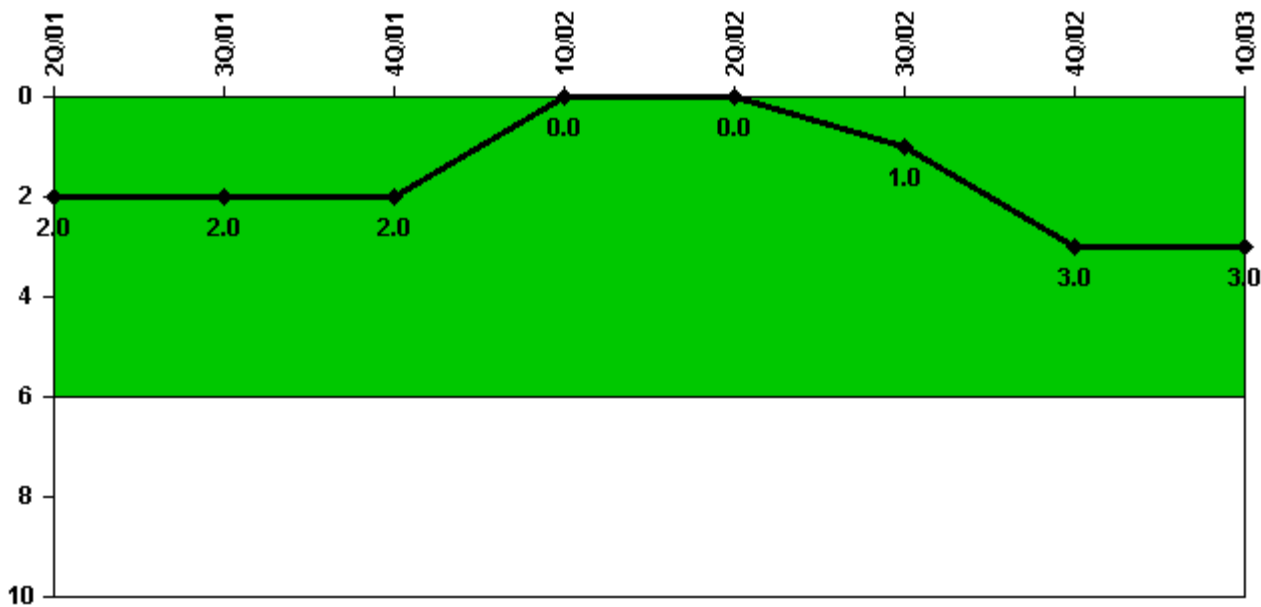
Thresholds: White > 1.5% Yellow > 5.0% Red > 10.0%

Notes

Safety System Unavailability, Residual Heat Removal System	2Q/01	3Q/01	4Q/01	1Q/02	2Q/02	3Q/02	4Q/02	1Q/03
Train 1								
Planned unavailable hours	0	0	0.25	0	2.48	0	3.00	0
Unplanned unavailable hours	0.30	0	0	0	0	0	0	59.20
Fault exposure hours	0	0	0	0	0	0	0	0
Effective Reset hours	0	0	0	0	0	0	0	0
Required hours	2183.00	2208.00	2209.00	2160.00	2183.00	2208.00	2209.00	2160.00
Train 2								
Planned unavailable hours	108.85	0	0	0	0	0.50	0	0
Unplanned unavailable hours	0	0	0	0	0	0	0	12.80
Fault exposure hours	0	0	0	0	0	0	0	0
Effective Reset hours	0	0	0	0	0	0	0	0
Required hours	2183.00	2208.00	2209.00	2160.00	2183.00	2208.00	2209.00	2160.00
Indicator value	1.0%	1.0%	0.5%	0.5%	0.3%	0.3%	0.3%	0.4%

Licensee Comments: none

Safety System Functional Failures (BWR)



Thresholds: White > 6.0

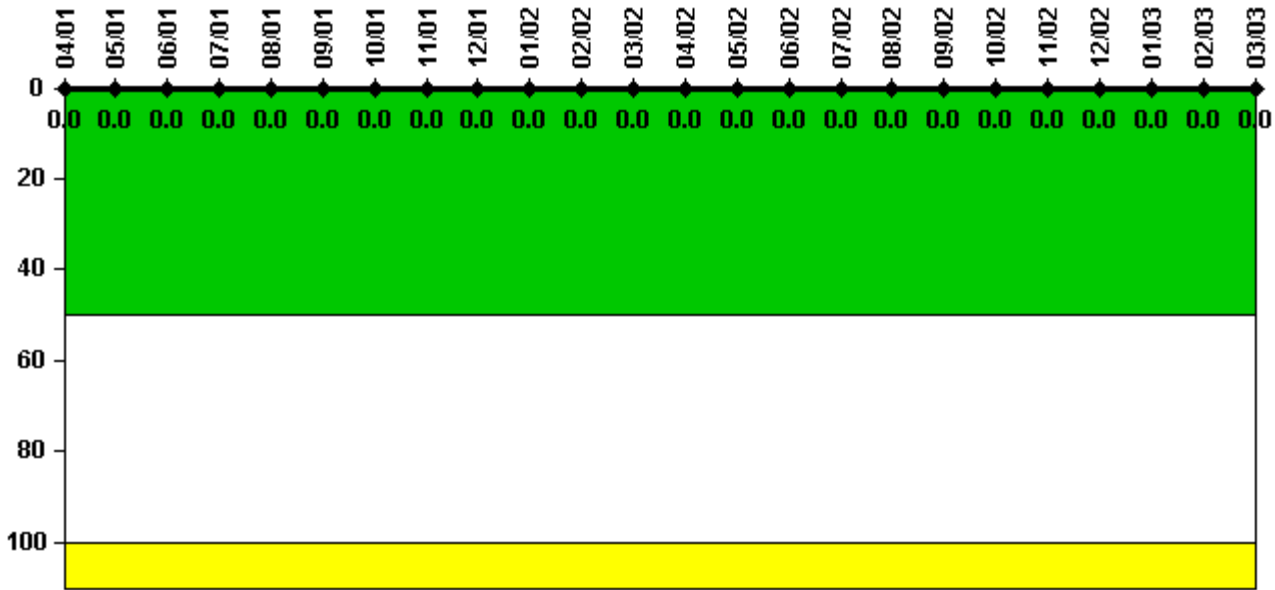
Notes

Safety System Functional Failures (BWR)	2Q/01	3Q/01	4Q/01	1Q/02	2Q/02	3Q/02	4Q/02	1Q/03
Safety System Functional Failures	0	0	0	0	0	1	2	0
Indicator value	2	2	2	0	0	1	3	3

Licensee Comments:

1Q/03: Reflects LER 2002-001-00 (HPCI) that was submitted on 9/4/2002, LER 2002-002-00 (CRHEAF) that was submitted on 11/12/2002, and LER 2002-003-00 (RPS) that was submitted on 12/2/2002.

Reactor Coolant System Activity



Thresholds: White > 50.0 Yellow > 100.0

Notes

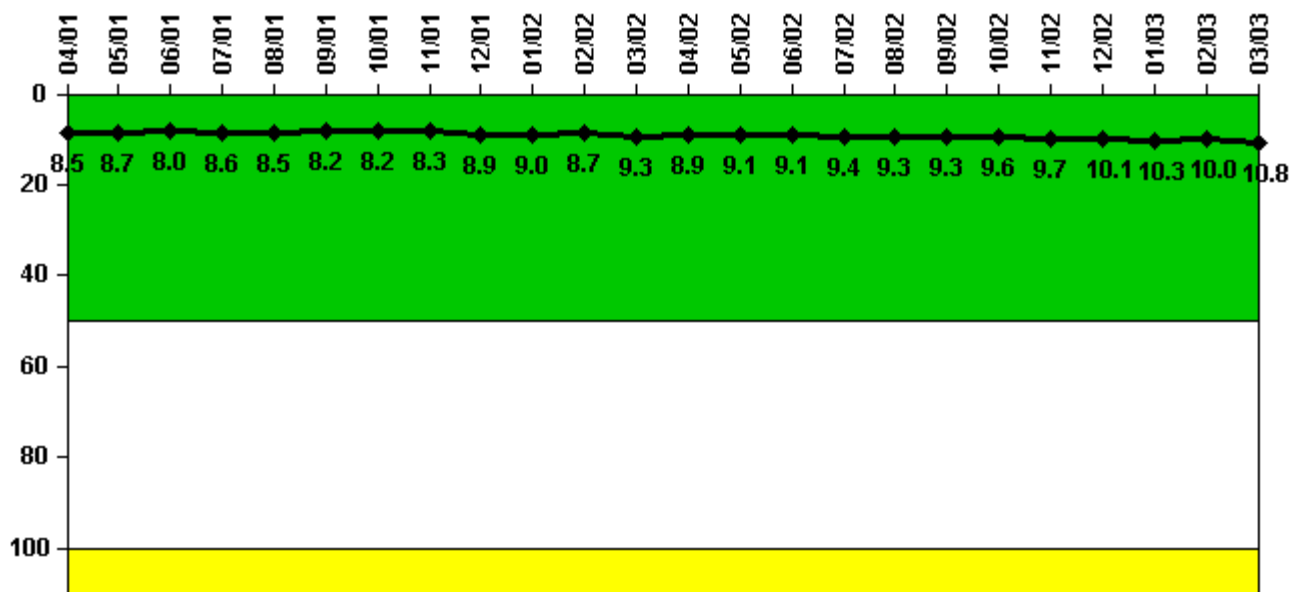
Reactor Coolant System Activity	4/01	5/01	6/01	7/01	8/01	9/01	10/01	11/01	12/01	1/02	2/02	3/02
Maximum activity	0.003490	0.002800	0.003140	0.002850	0.003030	0.002270	0.003310	0.002450	0.002260	0.002860	0.003050	0.003100
Technical specification limit	20.0	20.0	20.0	20.0	20.0	20.0	20.0	20.0	20.0	20.0	20.0	20.0
Indicator value	0	0	0	0	0	0	0	0	0	0	0	0

Reactor Coolant System Activity	4/02	5/02	6/02	7/02	8/02	9/02	10/02	11/02	12/02	1/03	2/03	3/03
Maximum activity	0.002360	0.002250	0.002360	0.002360	0.002930	0.002850	0.001780	0.002160	0.002900	0.004520	0.003160	0.003040
Technical specification limit	20.0	20.0	20.0	20.0	20.0	20.0	20.0	20.0	20.0	20.0	20.0	20.0
Indicator value	0	0	0	0	0	0	0	0	0	0	0	0

Licensee Comments:

3/03: Maximum calculated RCS activity in micro-Curies per gram total Iodine, expressed as a percentage of the Technical Specification limit. Technical Specifications specify total Iodine, does not specify dose equivalent Iodine-131.

Reactor Coolant System Leakage



Thresholds: White > 50.0 Yellow > 100.0

Notes

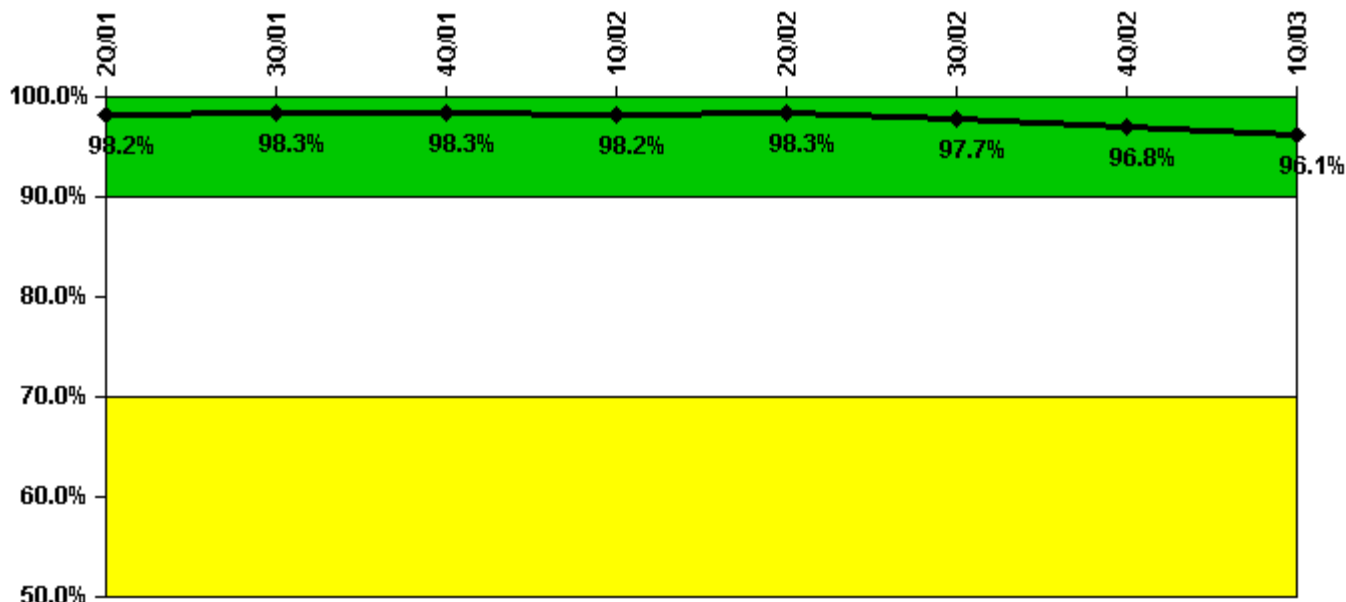
Reactor Coolant System Leakage	4/01	5/01	6/01	7/01	8/01	9/01	10/01	11/01	12/01	1/02	2/02	3/02
Maximum leakage	2.120	2.180	2.000	2.140	2.130	2.060	2.060	2.080	2.230	2.250	2.180	2.330
Technical specification limit	25.0	25.0	25.0	25.0	25.0	25.0	25.0	25.0	25.0	25.0	25.0	25.0
Indicator value	8.5	8.7	8.0	8.6	8.5	8.2	8.2	8.3	8.9	9.0	8.7	9.3

Reactor Coolant System Leakage	4/02	5/02	6/02	7/02	8/02	9/02	10/02	11/02	12/02	1/03	2/03	3/03
Maximum leakage	2.230	2.270	2.280	2.360	2.330	2.330	2.400	2.420	2.530	2.570	2.500	2.710
Technical specification limit	25.0	25.0	25.0	25.0	25.0	25.0	25.0	25.0	25.0	25.0	25.0	25.0
Indicator value	8.9	9.1	9.1	9.4	9.3	9.3	9.6	9.7	10.1	10.3	10.0	10.8

Licensee Comments:

3/03: Maximum total leakage (un-identified plus identified) in gpm for each month, expressed as a percentage of the Technical Specification limit. Technical Specifications specify un-identified and total leakage, does not specify identified leakage.

Drill/Exercise Performance



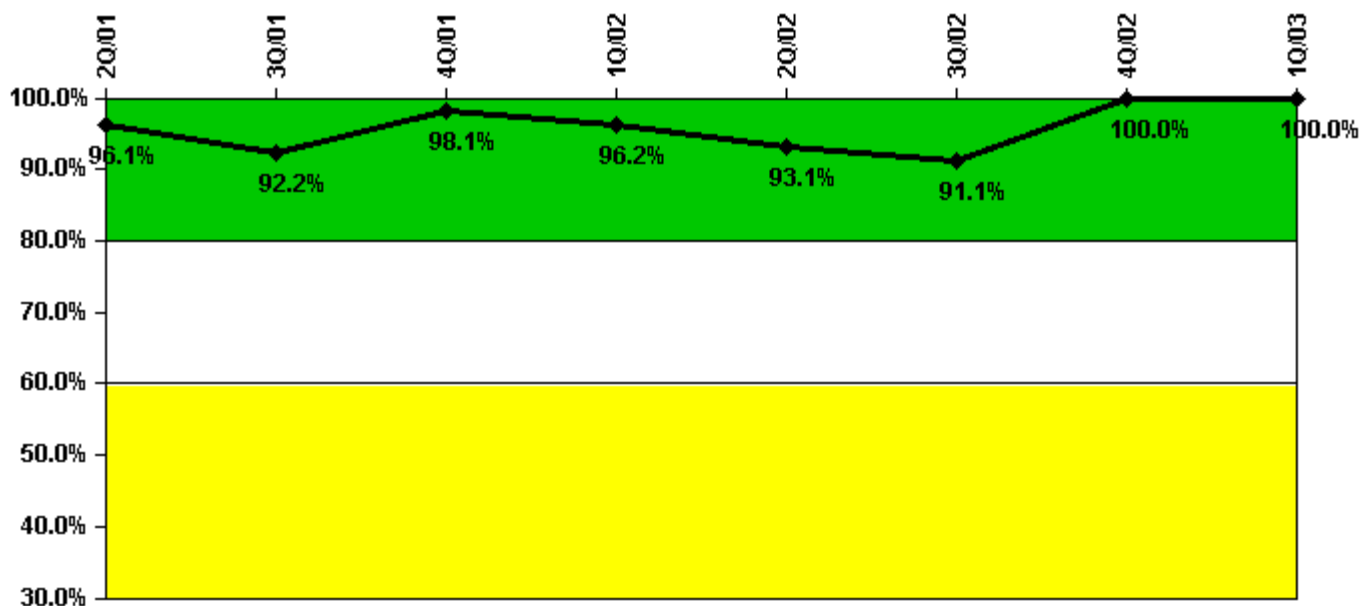
Thresholds: White < 90.0% Yellow < 70.0%

Notes

Drill/Exercise Performance	2Q/01	3Q/01	4Q/01	1Q/02	2Q/02	3Q/02	4Q/02	1Q/03
Successful opportunities	2.0	28.0	59.0	14.0	26.0	54.0	22.0	15.0
Total opportunities	2.0	28.0	61.0	15.0	26.0	56.0	24.0	17.0
Indicator value	98.2%	98.3%	98.3%	98.2%	98.3%	97.7%	96.8%	96.1%

Licensee Comments: none

ERO Drill Participation



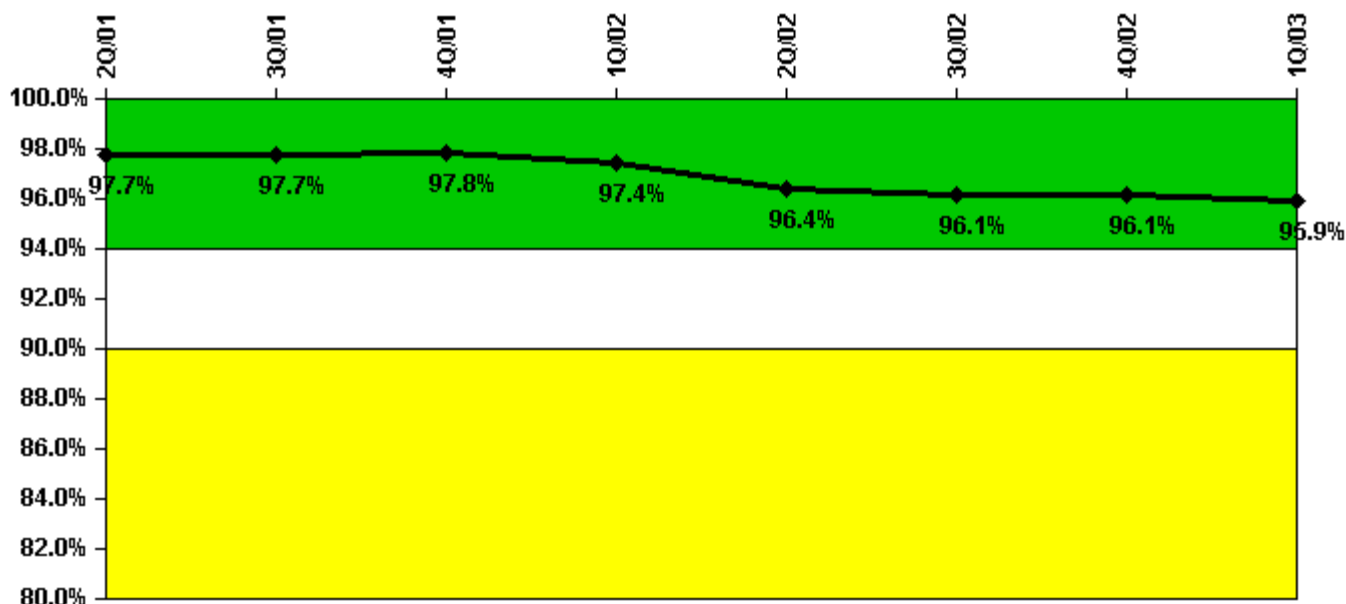
Thresholds: White < 80.0% Yellow < 60.0%

Notes

ERO Drill Participation	2Q/01	3Q/01	4Q/01	1Q/02	2Q/02	3Q/02	4Q/02	1Q/03
Participating Key personnel	49.0	47.0	52.0	50.0	54.0	51.0	58.0	57.0
Total Key personnel	51.0	51.0	53.0	52.0	58.0	56.0	58.0	57.0
Indicator value	96.1%	92.2%	98.1%	96.2%	93.1%	91.1%	100.0%	100.0%

Licensee Comments: none

Alert & Notification System



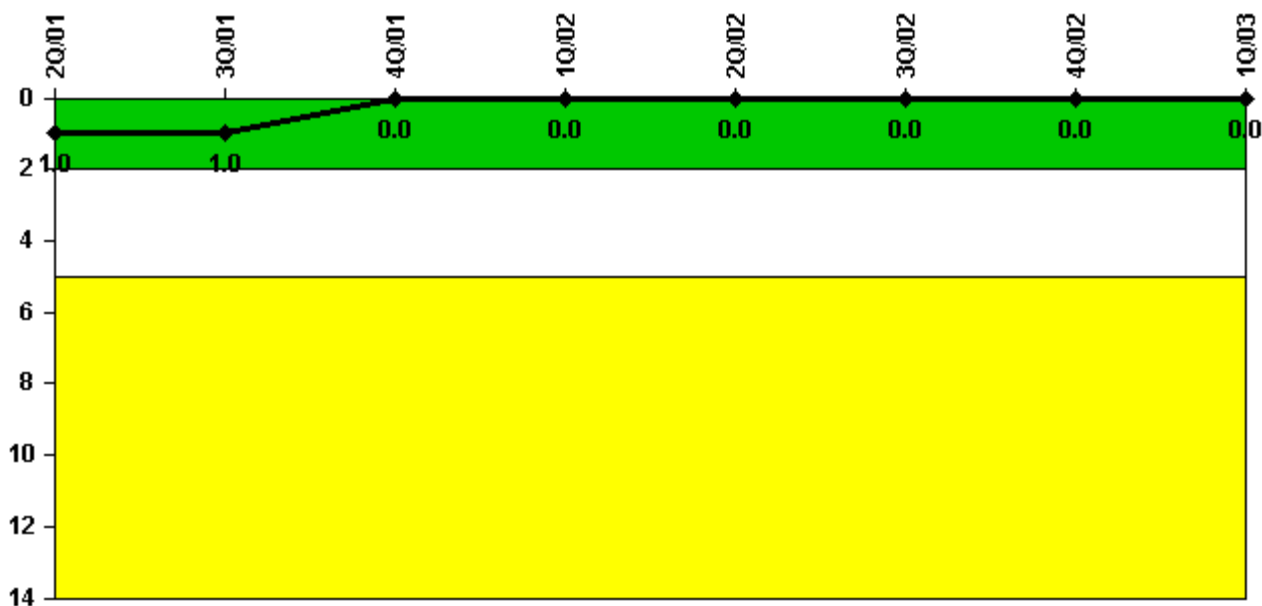
Thresholds: White < 94.0% Yellow < 90.0%

Notes

Alert & Notification System	2Q/01	3Q/01	4Q/01	1Q/02	2Q/02	3Q/02	4Q/02	1Q/03
Successful siren-tests	328	328	438	324	313	432	330	321
Total sirens-tests	336	336	448	336	336	448	336	336
Indicator value	97.7%	97.7%	97.8%	97.4%	96.4%	96.1%	96.1%	95.9%

Licensee Comments: none

Occupational Exposure Control Effectiveness



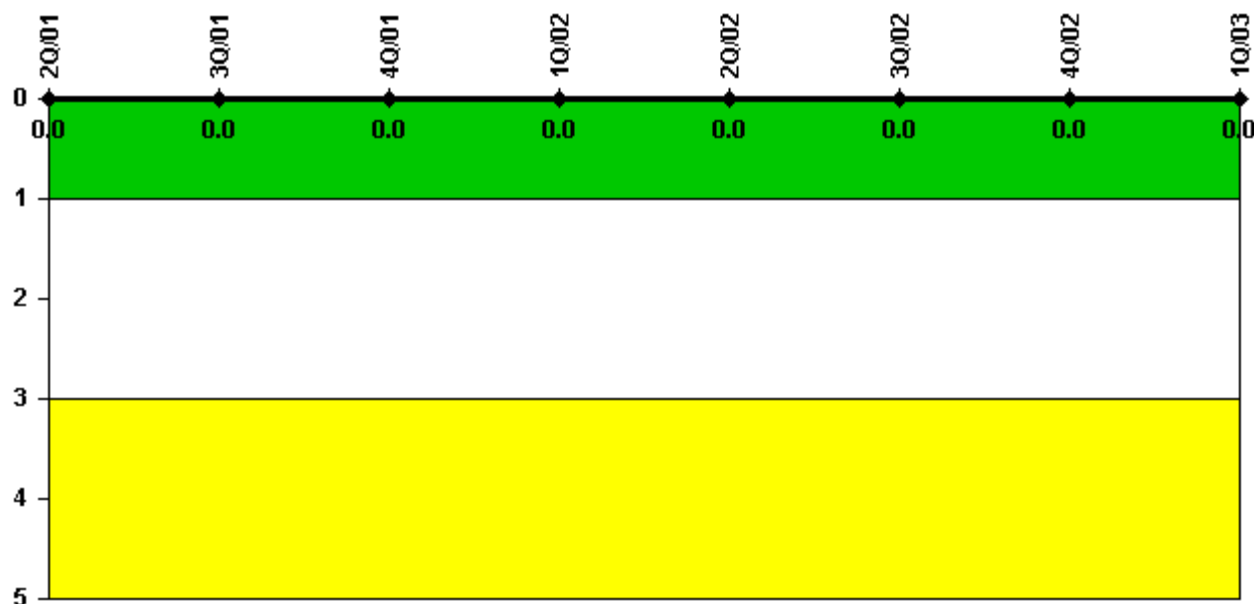
Thresholds: White > 2.0 Yellow > 5.0

Notes

Occupational Exposure Control Effectiveness	2Q/01	3Q/01	4Q/01	1Q/02	2Q/02	3Q/02	4Q/02	1Q/03
High radiation area occurrences	0	0	0	0	0	0	0	0
Very high radiation area occurrences	0	0	0	0	0	0	0	0
Unintended exposure occurrences	0	0	0	0	0	0	0	0
Indicator value	1	1	0	0	0	0	0	0

Licensee Comments: none

RETS/ODCM Radiological Effluent



Thresholds: White > 1.0 Yellow > 3.0

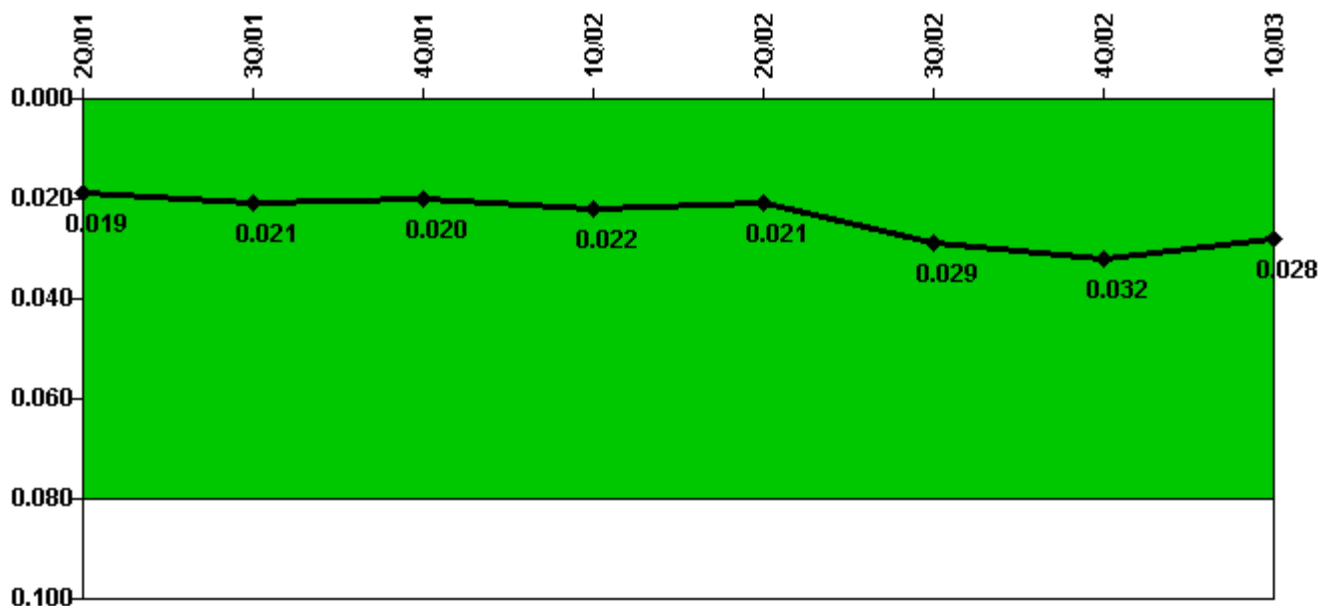
Notes

RETS/ODCM Radiological Effluent	2Q/01	3Q/01	4Q/01	1Q/02	2Q/02	3Q/02	4Q/02	1Q/03
RETS/ODCM occurrences	0	0	0	0	0	0	0	0
Indicator value	0	0	0	0	0	0	0	0

Licensee Comments:

1Q/03: Analysis results of effluents for March 2003 were not available when this report was submitted because the results of laboratory analysis of samples for March 2003 will not be available until April 2003. Weekly calculations completed through March 31, 2003 indicate cumulative doses for 1Q-2003 were well below the specified values. The sample analysis results for 1Q-2003 will be reflected in the July 2003 data submittal (for 2Q-2003). The sample analysis results for 4Q-2002 were as reported in the January 2003 submittal (for 4Q-2002).

Protected Area Security Performance Index



Thresholds: White > 0.080

Notes

Protected Area Security Performance Index	2Q/01	3Q/01	4Q/01	1Q/02	2Q/02	3Q/02	4Q/02	1Q/03
IDS compensatory hours	151.10	73.20	36.60	173.60	137.20	82.40	42.20	75.80
CCTV compensatory hours	36.6	118.5	0	26.9	31.8	250.3	45.9	0.6
IDS normalization factor	2.15	2.15	2.15	2.15	2.15	2.15	2.15	2.15
CCTV normalization factor	1.0	1.0	1.0	1.0	1.0	1.0	1.0	1.0
Index Value	0.019	0.021	0.020	0.022	0.021	0.029	0.032	0.028

Licensee Comments: none

Personnel Screening Program



Thresholds: White > 2.0 Yellow > 5.0

Notes

Personnel Screening Program	2Q/01	3Q/01	4Q/01	1Q/02	2Q/02	3Q/02	4Q/02	1Q/03
Program failures	0	0	0	0	0	0	0	0
Indicator value	0	0	0	0	0	0	0	0

Licensee Comments: none

FFD/Personnel Reliability



Thresholds: White > 2.0 Yellow > 5.0

Notes

FFD/Personnel Reliability	2Q/01	3Q/01	4Q/01	1Q/02	2Q/02	3Q/02	4Q/02	1Q/03
Program Failures	0	0	0	0	0	0	0	0
Indicator value	0	0	0	0	0	0	0	0

Licensee Comments: none

▲ [PI Summary](#) | [Inspection Findings Summary](#) | [Reactor Oversight Process](#)

Last Modified: April 22, 2003