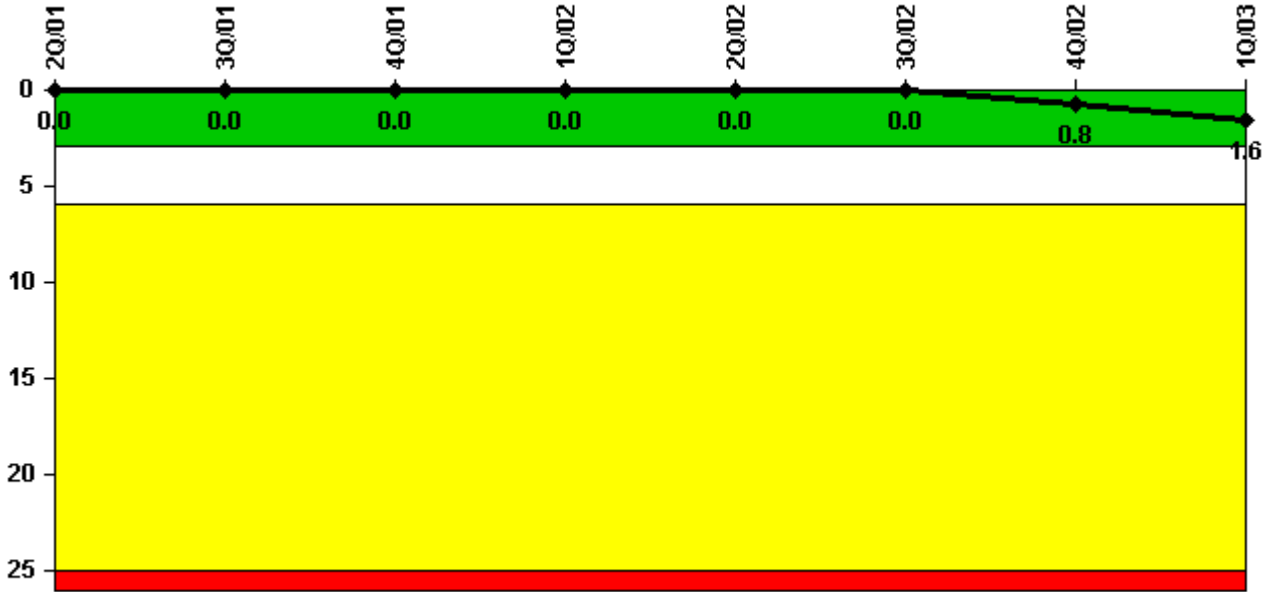


# Indian Point 3

## 1Q/2003 Performance Indicators

Licensee's General Comments: none

### Unplanned Scrams per 7000 Critical Hrs



**Thresholds: White > 3.0 Yellow > 6.0 Red > 25.0**

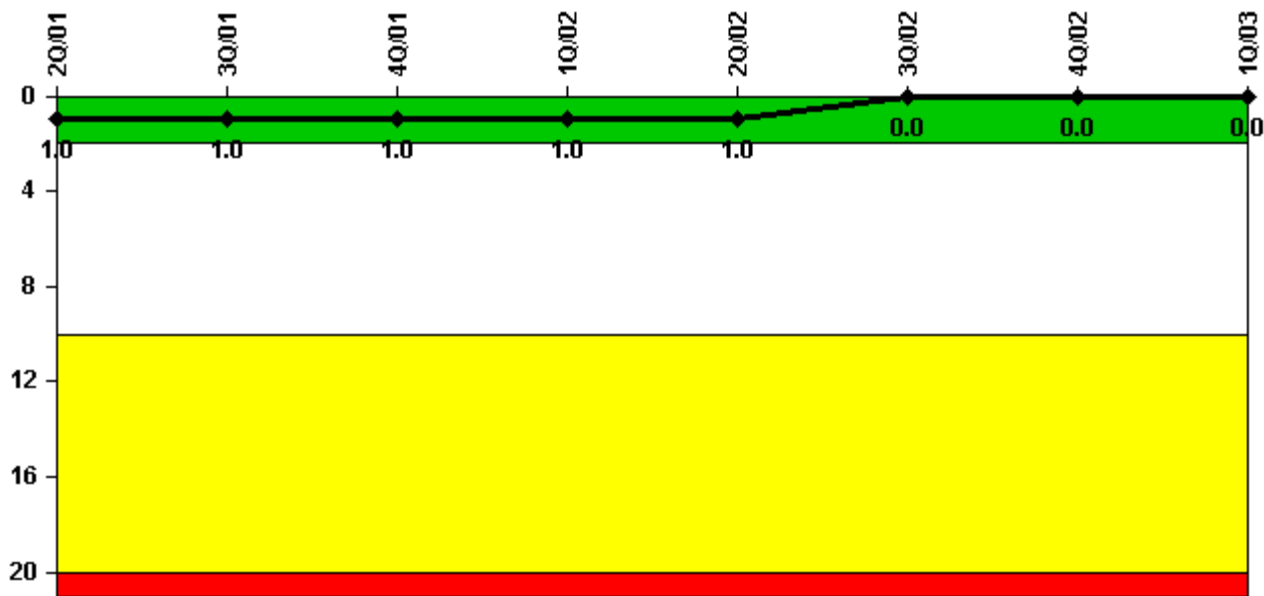
### Notes

Unplanned Scrams per 7000 Critical Hrs	2Q/01	3Q/01	4Q/01	1Q/02	2Q/02	3Q/02	4Q/02	1Q/03
Unplanned scrams	0	0	0	0	0	0	1.0	1.0
Critical hours	1579.4	2208.0	2209.0	2160.0	2183.0	2208.0	2080.1	2062.9
Indicator value	0	0	0	0	0	0	0.8	1.6

Licensee Comments:

1Q/03: Manual reactor trip on January 13, 2003, in accordance with Off Normal Operating Procedure (ONOP-C-1) due to high differential pressure between sections of the main condenser. The high differential pressure was due to loss of circulating water in one of the three condenser sections as a result of the trip of the 35 circulating water pump (CWP) while the 36 CWP was tagged out for planned maintenance.

### Scrams with Loss of Normal Heat Removal



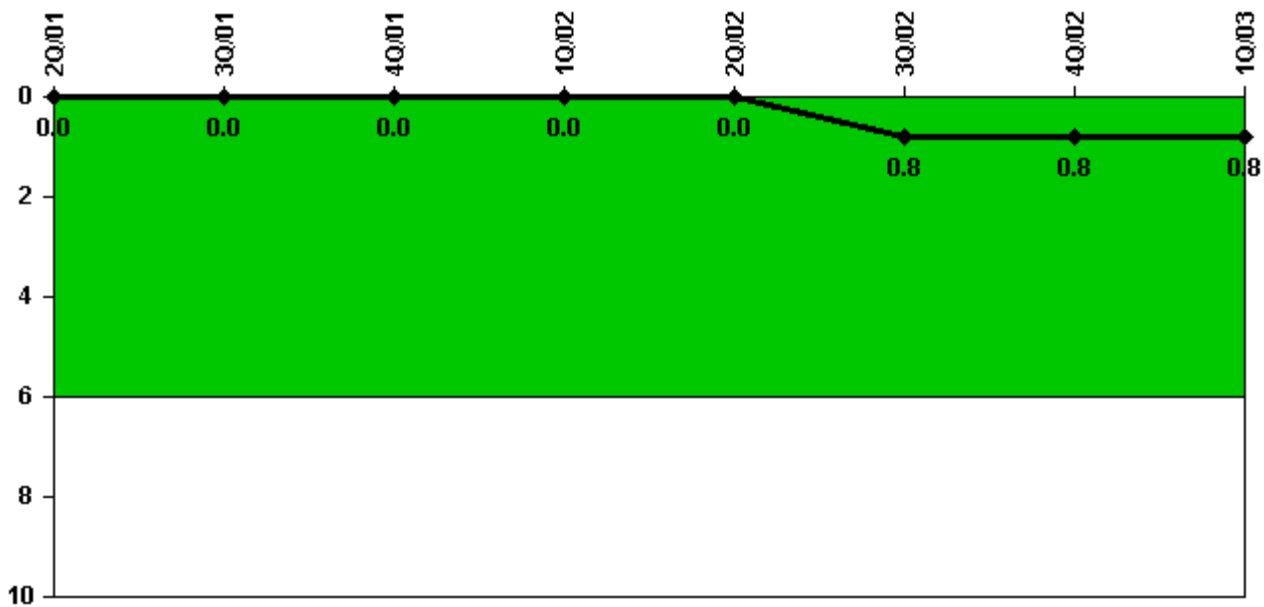
Thresholds: White > 2.0 Yellow > 10.0 Red > 20.0

#### Notes

Scrams with Loss of Normal Heat Removal	2Q/01	3Q/01	4Q/01	1Q/02	2Q/02	3Q/02	4Q/02	1Q/03
Scrams	0	0	0	0	0	0	0	0
Indicator value	1.0	1.0	1.0	1.0	1.0	0	0	0

Licensee Comments: none

### Unplanned Power Changes per 7000 Critical Hrs



Thresholds: White > 6.0

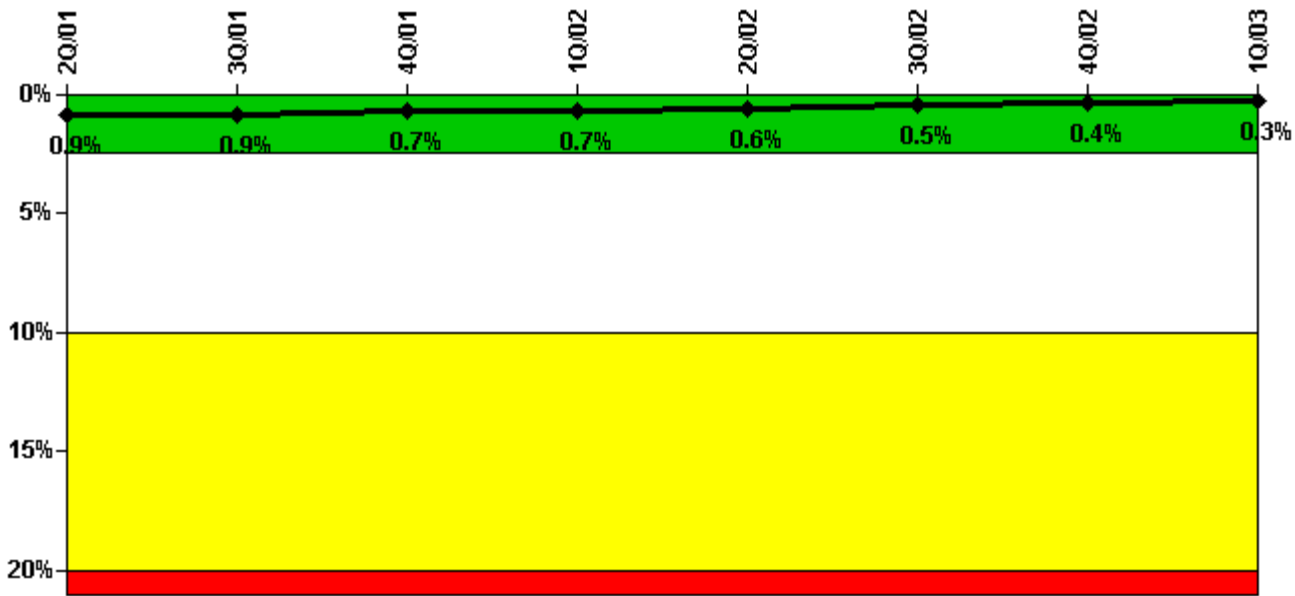
#### Notes

Unplanned Power Changes per 7000 Critical Hrs	2Q/01	3Q/01	4Q/01	1Q/02	2Q/02	3Q/02	4Q/02	1Q/03
Unplanned power changes	0	0	0	0	0	1.0	0	0
Critical hours	1579.4	2208.0	2209.0	2160.0	2183.0	2208.0	2080.1	2062.9
Indicator value	0	0	0	0	0	0.8	0.8	0.8

Licensee Comments:

1Q/03: Planned power reduction and reactor trip on March 29, 2003, for refueling outage 12.

### Safety System Unavailability, Emergency AC Power, >2EDG



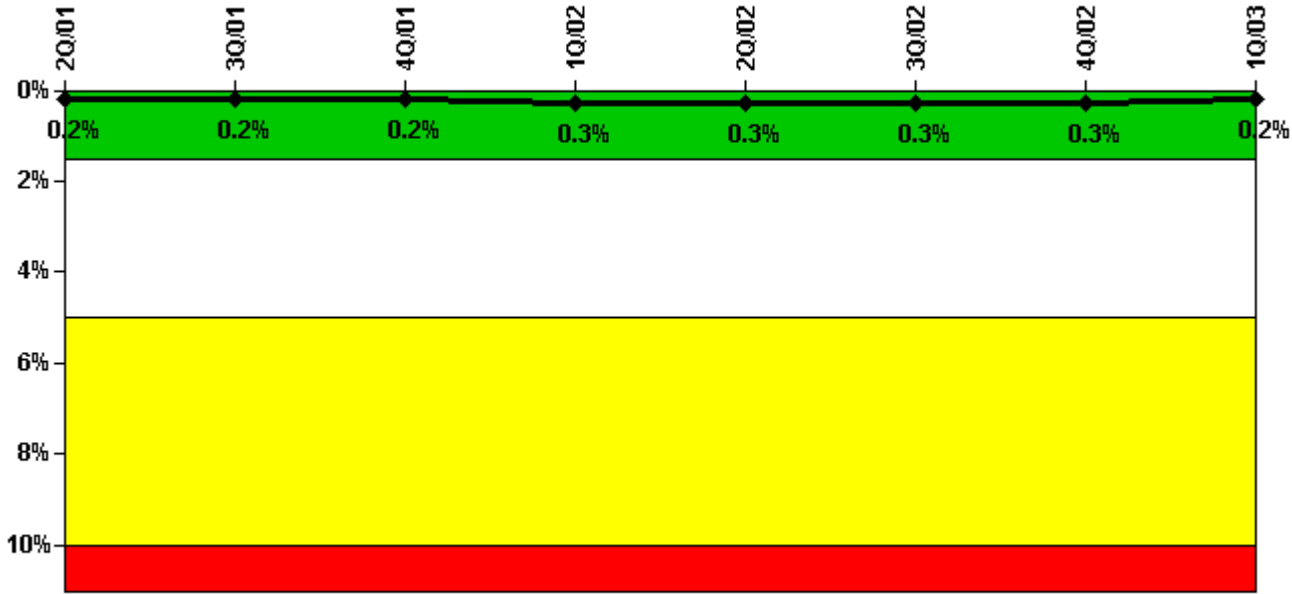
Thresholds: White > 2.5% Yellow > 10.0% Red > 20.0%

#### Notes

Safety System Unavailability, Emergency AC Power, >2EDG	2Q/01	3Q/01	4Q/01	1Q/02	2Q/02	3Q/02	4Q/02	1Q/03
<b>Train 1</b>								
Planned unavailable hours	0	0	0	13.88	0	21.76	0	22.13
Unplanned unavailable hours	0	0	0	3.27	4.07	0	0	0
Fault exposure hours	0	0	0	0	0	0	0	0
Effective Reset hours	0	0	0	0	0	0	0	0
Required hours	2183.00	2208.00	2209.00	2160.00	2183.00	2208.00	2080.05	2160.00
<b>Train 2</b>								
Planned unavailable hours	0	2.60	0	0	14.00	0	0	19.32
Unplanned unavailable hours	0	0	22.70	14.25	10.97	37.29	0	0
Fault exposure hours	0	0	0	0	0	0	0	0
Effective Reset hours	0	0	0	0	0	0	0	0
Required hours	2183.00	2208.00	2209.00	2160.00	2183.00	2208.00	2080.05	2160.00
<b>Train 3</b>								
Planned unavailable hours	0	5.15	0	0	14.77	0	0	0
Unplanned unavailable hours	3.30	0	0	0	0	0	0	0
Fault exposure hours	0	0	0	0	0	0	0	0
Effective Reset hours	0	0	0	0	0	0	0	0
Required hours	2183.00	2208.00	2209.00	2160.00	2183.00	2208.00	2080.05	2160.00
Indicator value	0.9%	0.9%	0.7%	0.7%	0.6%	0.5%	0.4%	0.3%

Licensee Comments: none

### Safety System Unavailability, High Pressure Injection System (HPSI)



Thresholds: White > 1.5% Yellow > 5.0% Red > 10.0%

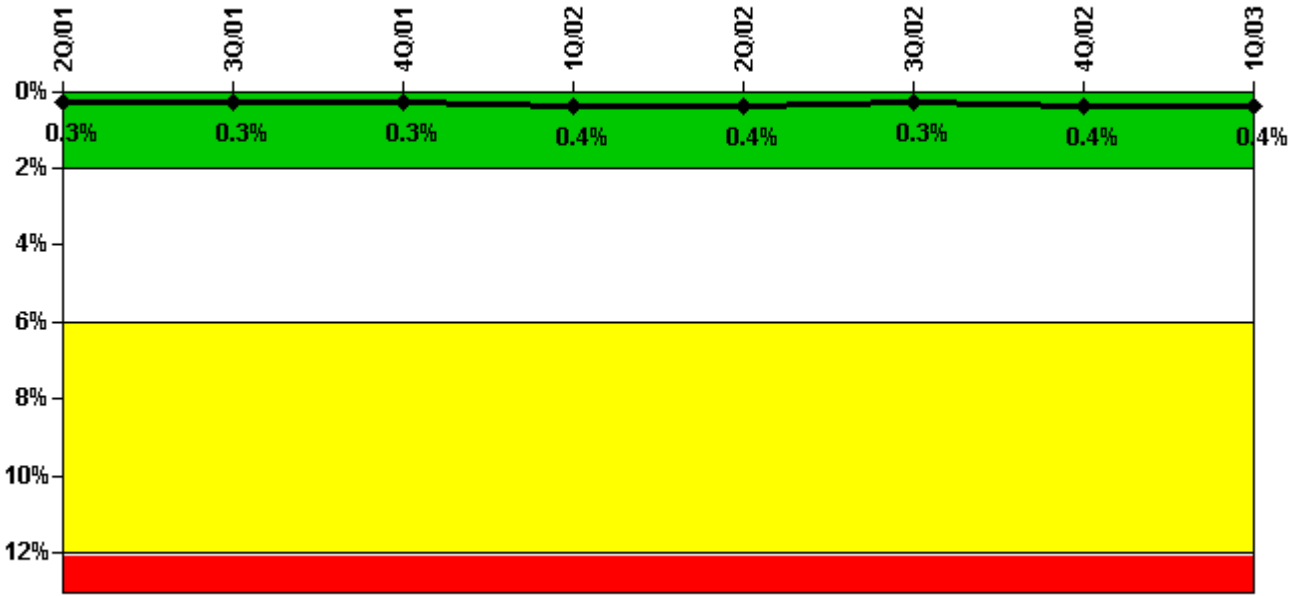
#### Notes

Safety System Unavailability, High Pressure Injection System (HPSI)	2Q/01	3Q/01	4Q/01	1Q/02	2Q/02	3Q/02	4Q/02	1Q/03
<b>Train 1</b>								
Planned unavailable hours	17.52	12.94	7.02	3.00	3.51	5.47	3.24	4.42
Unplanned unavailable hours	0	0	0	0	0	0	0	0
Fault exposure hours	0	0	0	0	0	0	0	0
Effective Reset hours	0	0	0	0	0	0	0	0
Required hours	1579.38	2208.00	2209.00	2160.00	2183.00	2208.00	2209.00	2062.80
<b>Train 2</b>								
Planned unavailable hours	0.83	5.22	17.21	7.40	0	0	0.27	0
Unplanned unavailable hours	0	0	0	0	0	0	0	0
Fault exposure hours	0	0	0	0	0	0	0	0
Effective Reset hours	0	0	0	0	0	0	0	0
Required hours	1579.38	2208.00	2209.00	2160.00	2183.00	2208.00	2209.00	2062.80
<b>Train 3</b>								
Planned unavailable hours	3.53	6.65	4.42	10.61	16.95	1.85	10.00	1.40
Unplanned unavailable hours	0	0	0	0	0	0	0	0
Fault exposure hours	0	0	0	0	0	0	0	0
Effective Reset hours	0	0	0	0	0	0	0	0
Required hours	1579.38	2208.00	2209.00	2160.00	2183.00	2208.00	2209.00	2062.80

Indicator value	0.2%	0.2%	0.2%	0.3%	0.3%	0.3%	0.3%	0.2%
-----------------	------	------	------	------	------	------	------	------

Licensee Comments: none

### Safety System Unavailability, Heat Removal System (AFW)



Thresholds: White > 2.0% Yellow > 6.0% Red > 12.0%

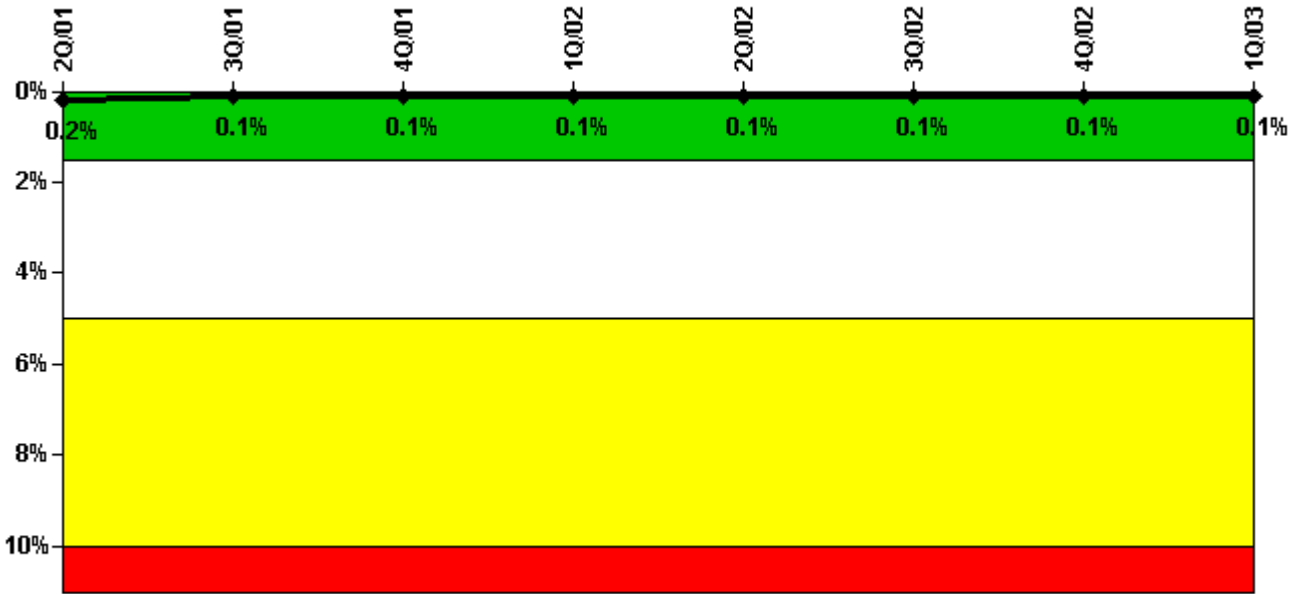
### Notes

Safety System Unavailability, Heat Removal System (AFW)	2Q/01	3Q/01	4Q/01	1Q/02	2Q/02	3Q/02	4Q/02	1Q/03
<b>Train 1</b>								
Planned unavailable hours	0	10.80	2.50	0	0.85	0.78	3.93	1.68
Unplanned unavailable hours	17.07	0	0	0	0	20.53	6.83	0
Fault exposure hours	0	0	0	0	0	0	0	0
Effective Reset hours	0	0	0	0	0	0	0	0
Required hours	1579.38	2208.00	2209.00	2160.00	2183.00	2208.00	2209.00	2062.80
<b>Train 2</b>								
Planned unavailable hours	11.11	32.13	11.60	32.30	8.80	2.67	2.47	5.37
Unplanned unavailable hours	0	0	0	0	0	0	0	0
Fault exposure hours	0	0	0	0	0	0	0	0
Effective Reset hours	0	0	0	0	0	0	0	0
Required hours	1579.38	2208.00	2209.00	2160.00	2183.00	2208.00	2209.00	2062.80
<b>Train 3</b>								
Planned unavailable hours	0.90	7.62	0.35	0	8.00	2.49	1.20	1.03
Unplanned unavailable hours	5.30	0	0.52	0	0	0	0	0

Fault exposure hours	0	0	0	0	0	0	0	0
Effective Reset hours	0	0	0	0	0	0	0	0
Required hours	1579.38	2208.00	2209.00	2160.00	2183.00	2208.00	2209.00	2062.80
Indicator value	0.3%	0.3%	0.3%	0.4%	0.4%	0.3%	0.4%	0.4%

Licensee Comments: none

### Safety System Unavailability, Residual Heat Removal System



Thresholds: White > 1.5% Yellow > 5.0% Red > 10.0%

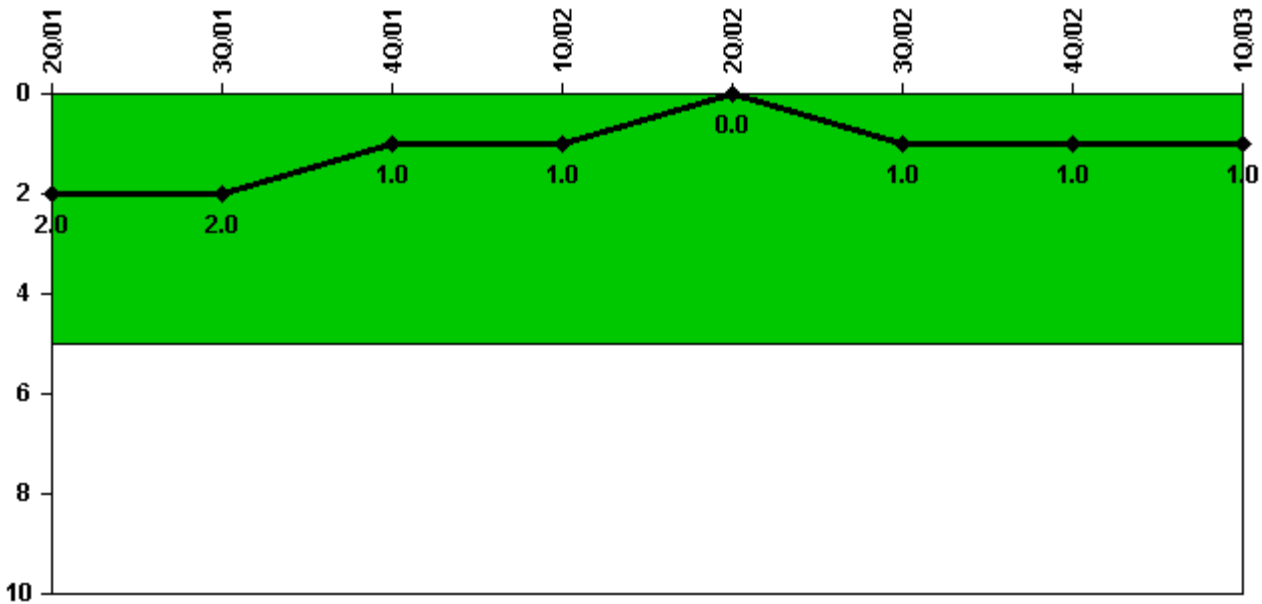
### Notes

Safety System Unavailability, Residual Heat Removal System	2Q/01	3Q/01	4Q/01	1Q/02	2Q/02	3Q/02	4Q/02	1Q/03
<b>Train 1</b>								
Planned unavailable hours	0.55	5.98	0	5.10	3.50	0	0	0.72
Unplanned unavailable hours	0	0	0	0	0	0	0	0
Fault exposure hours	0	0	0	0	0	0	0	0
Effective Reset hours	0	0	0	0	0	0	0	0
Required hours	2183.00	2208.00	2209.00	2160.00	2183.00	2208.00	2209.00	2111.30
<b>Train 2</b>								
Planned unavailable hours	8.12	7.05	0	0	0	0	0	0.43
Unplanned unavailable hours	0	0	0	0	0	0	0	0
Fault exposure hours	0	0	0	0	0	0	0	0
Effective Reset hours	0	0	0	0	0	0	0	0

Required hours	2183.00	2208.00	2209.00	2160.00	2183.00	2208.00	2209.00	2111.30
<b>Train 3</b>								
Planned unavailable hours	0	11.26	0	0	0	0	0	0
Unplanned unavailable hours	0	0	0	0	0	0	0	0
Fault exposure hours	0	0	0	0	0	0	0	0
Effective Reset hours	0	0	0	0	0	0	0	0
Required hours	2183.00	2208.00	2209.00	2160.00	2183.00	2208.00	2209.00	2111.30
<b>Train 4</b>								
Planned unavailable hours	0	10.59	0	0	0	0	0	0
Unplanned unavailable hours	0	0	0	0	0	0	0	0
Fault exposure hours	0	0	0	0	0	0	0	0
Effective Reset hours	0	0	0	0	0	0	0	0
Required hours	2183.00	2208.00	2209.00	2160.00	2183.00	2208.00	2209.00	2111.30
<b>Indicator value</b>	0.2%	0.1%	0.1%	0.1%	0.1%	0.1%	0.1%	0.1%

Licensee Comments: none

### Safety System Functional Failures (PWR)



Thresholds: White > 5.0

#### Notes

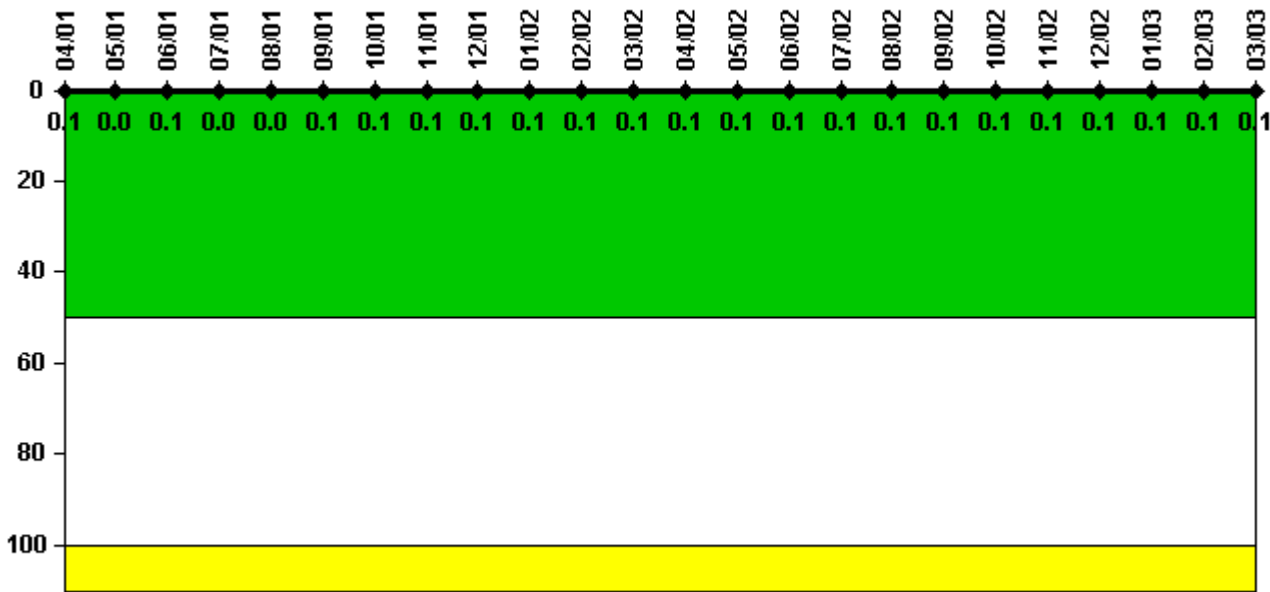
Safety System Functional Failures (PWR)	2Q/01	3Q/01	4Q/01	1Q/02	2Q/02	3Q/02	4Q/02	1Q/03
Safety System Functional Failures	1	0	0	0	0	1	0	0



Indicator value	2	2	1	1	0	1	1	1

Licensee Comments: none

### Reactor Coolant System Activity



Thresholds: White > 50.0 Yellow > 100.0

### Notes

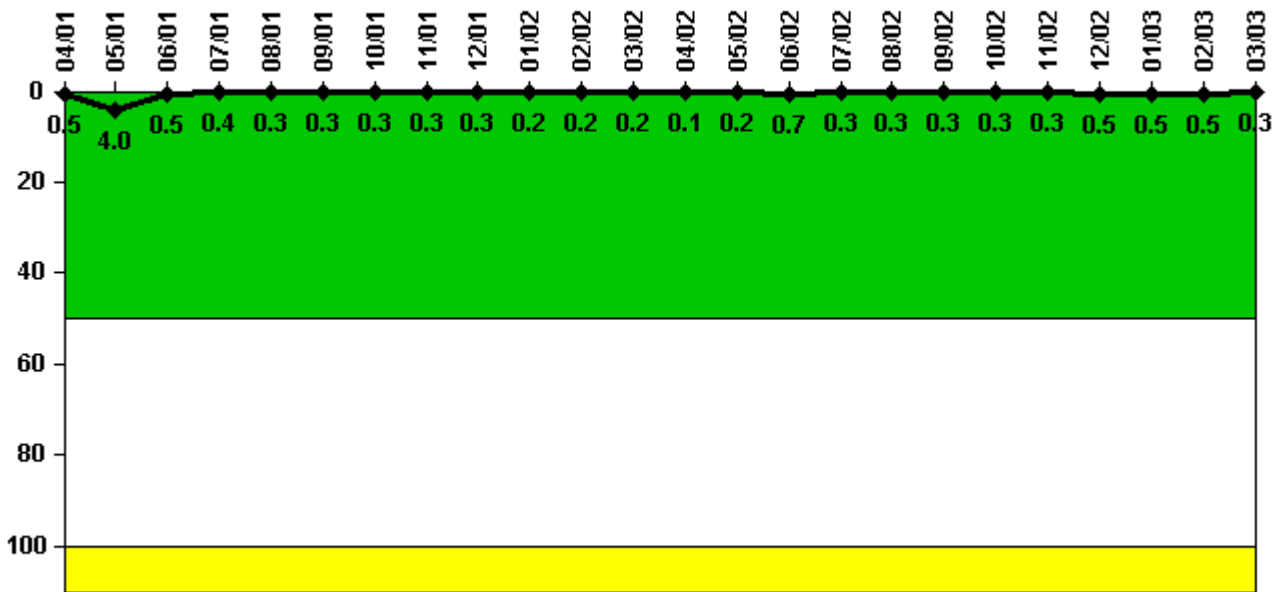
Reactor Coolant System Activity	4/01	5/01	6/01	7/01	8/01	9/01	10/01	11/01	12/01	1/02	2/02	3/02
Maximum activity	0.001440	0.000150	0.000508	0.000457	0.000499	0.000509	0.000531	0.000537	0.000581	0.000761	0.000670	0.000696
Technical specification limit	1.0	1.0	1.0	1.0	1.0	1.0	1.0	1.0	1.0	1.0	1.0	1.0
Indicator value	0.1	0	0.1	0	0	0.1	0.1	0.1	0.1	0.1	0.1	0.1

Reactor Coolant System Activity	4/02	5/02	6/02	7/02	8/02	9/02	10/02	11/02	12/02	1/03	2/03	3/03
Maximum activity	0.000804	0.000878	0.000767	0.000897	0.000920	0.001000	0.001100	0.001020	0.001090	0.001150	0.001190	0.001360
Technical specification limit	1.0	1.0	1.0	1.0	1.0	1.0	1.0	1.0	1.0	1.0	1.0	1.0
Indicator value	0.1	0.1	0.1	0.1	0.1	0.1	0.1	0.1	0.1	0.1	0.1	0.1

Licensee Comments: none

### Reactor Coolant System Leakage



Thresholds: White > 50.0 Yellow > 100.0

**Notes**

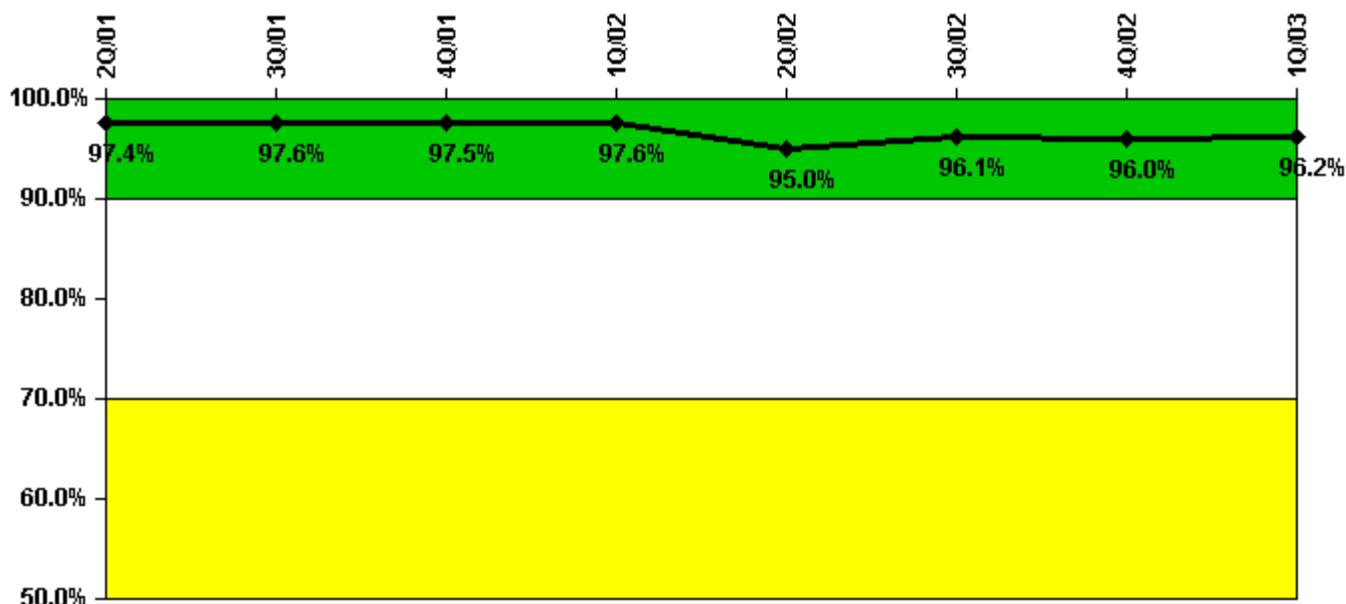
Reactor Coolant System Leakage	4/01	5/01	6/01	7/01	8/01	9/01	10/01	11/01	12/01	1/02	2/02	3/02
Maximum leakage	0.054	0.400	0.050	0.042	0.030	0.029	0.033	0.030	0.031	0.020	0.020	0.020
Technical specification limit	10.0	10.0	10.0	10.0	10.0	10.0	10.0	10.0	10.0	10.0	10.0	10.0
Indicator value	0.5	4.0	0.5	0.4	0.3	0.3	0.3	0.3	0.3	0.2	0.2	0.2

Reactor Coolant System Leakage	4/02	5/02	6/02	7/02	8/02	9/02	10/02	11/02	12/02	1/03	2/03	3/03
Maximum leakage	0.013	0.020	0.070	0.030	0.031	0.030	0.030	0.033	0.050	0.050	0.047	0.030
Technical specification limit	10.0	10.0	10.0	10.0	10.0	10.0	10.0	10.0	10.0	10.0	10.0	10.0
Indicator value	0.1	0.2	0.7	0.3	0.3	0.3	0.3	0.3	0.5	0.5	0.5	0.3

Licensee Comments: none

### Drill/Exercise Performance



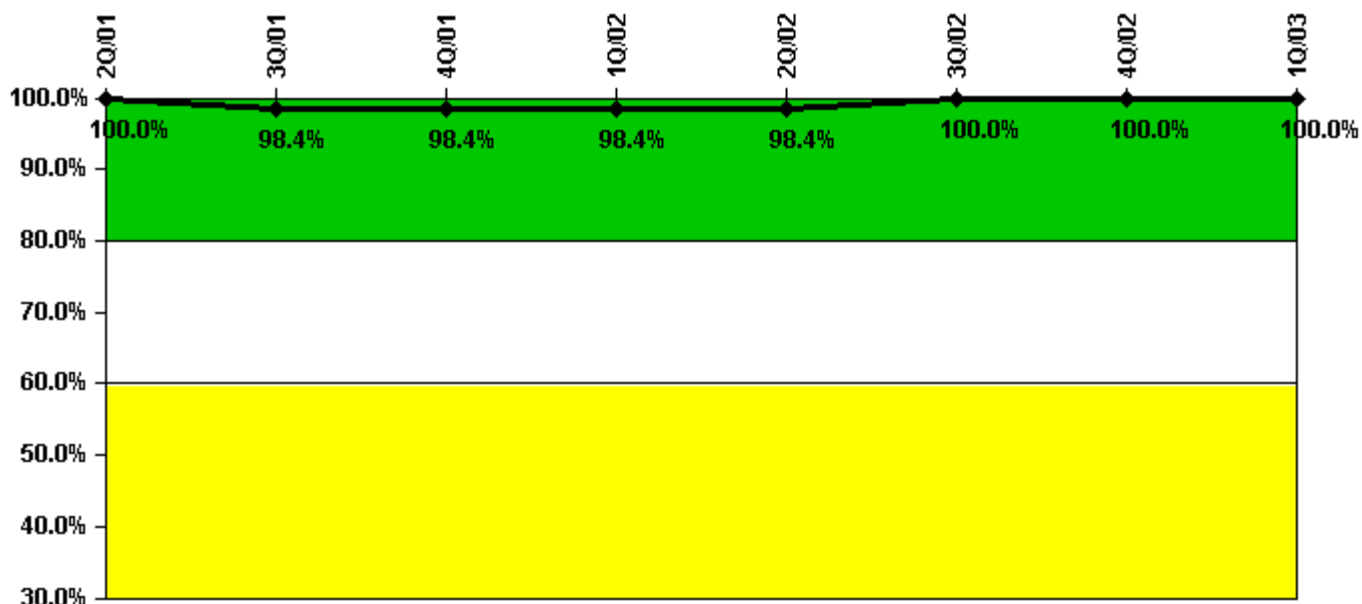
Thresholds: White < 90.0% Yellow < 70.0%

#### Notes

Drill/Exercise Performance	2Q/01	3Q/01	4Q/01	1Q/02	2Q/02	3Q/02	4Q/02	1Q/03
Successful opportunities	4.0	26.0	14.0	14.0	7.0	20.0	8.0	8.0
Total opportunities	4.0	26.0	14.0	14.0	11.0	20.0	8.0	8.0
Indicator value	97.4%	97.6%	97.5%	97.6%	95.0%	96.1%	96.0%	96.2%

Licensee Comments: none

### ERO Drill Participation



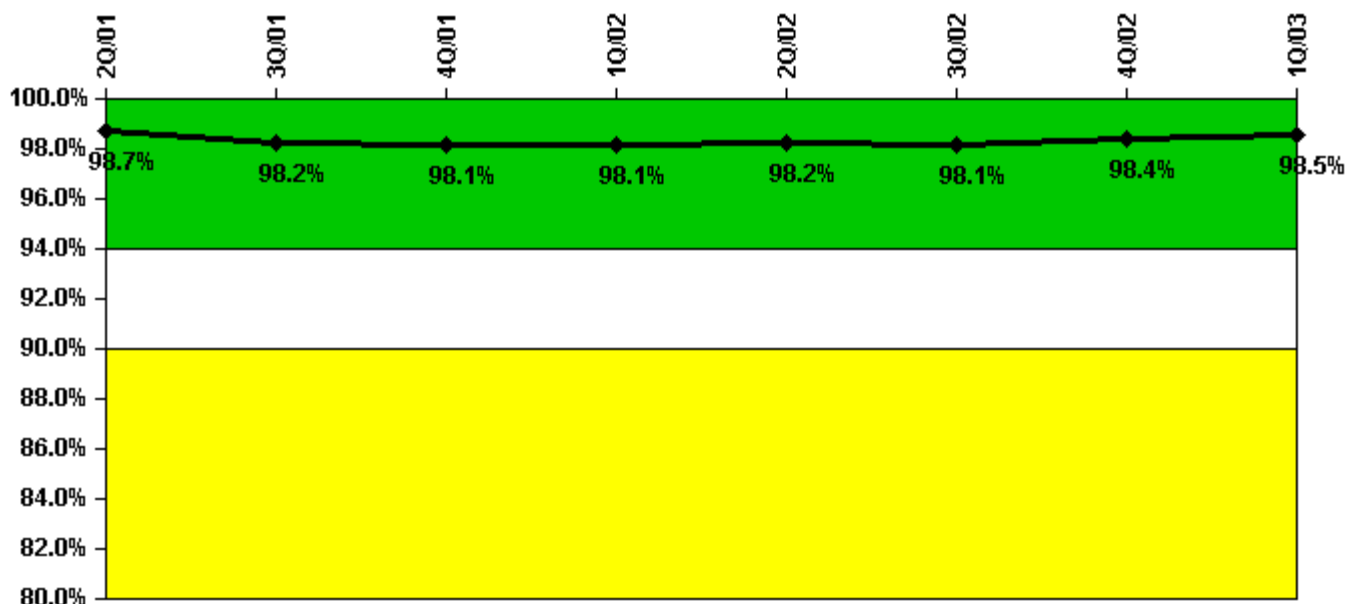
Thresholds: White < 80.0% Yellow < 60.0%

#### Notes

ERO Drill Participation	2Q/01	3Q/01	4Q/01	1Q/02	2Q/02	3Q/02	4Q/02	1Q/03
Participating Key personnel	65.0	61.0	63.0	63.0	63.0	63.0	66.0	64.0
Total Key personnel	65.0	62.0	64.0	64.0	64.0	63.0	66.0	64.0
Indicator value	100.0%	98.4%	98.4%	98.4%	98.4%	100.0%	100.0%	100.0%

Licensee Comments: none

### Alert & Notification System



Thresholds: White < 94.0% Yellow < 90.0%

#### Notes

Alert & Notification System	2Q/01	3Q/01	4Q/01	1Q/02	2Q/02	3Q/02	4Q/02	1Q/03
Successful siren-tests	1062	997	1197	1003	1111	991	1267	984
Total sirens-tests	1078	1029	1222	1011	1124	1029	1277	988
Indicator value	98.7%	98.2%	98.1%	98.1%	98.2%	98.1%	98.4%	98.5%

Licensee Comments: none

### Occupational Exposure Control Effectiveness



Thresholds: White > 2.0 Yellow > 5.0

#### Notes

Occupational Exposure Control Effectiveness	2Q/01	3Q/01	4Q/01	1Q/02	2Q/02	3Q/02	4Q/02	1Q/03
High radiation area occurrences	0	0	0	0	0	0	0	0
Very high radiation area occurrences	0	0	0	0	0	0	0	0
Unintended exposure occurrences	0	0	0	0	0	0	0	0
Indicator value	0	0	0	0	0	0	0	0

Licensee Comments: none

### RETS/ODCM Radiological Effluent



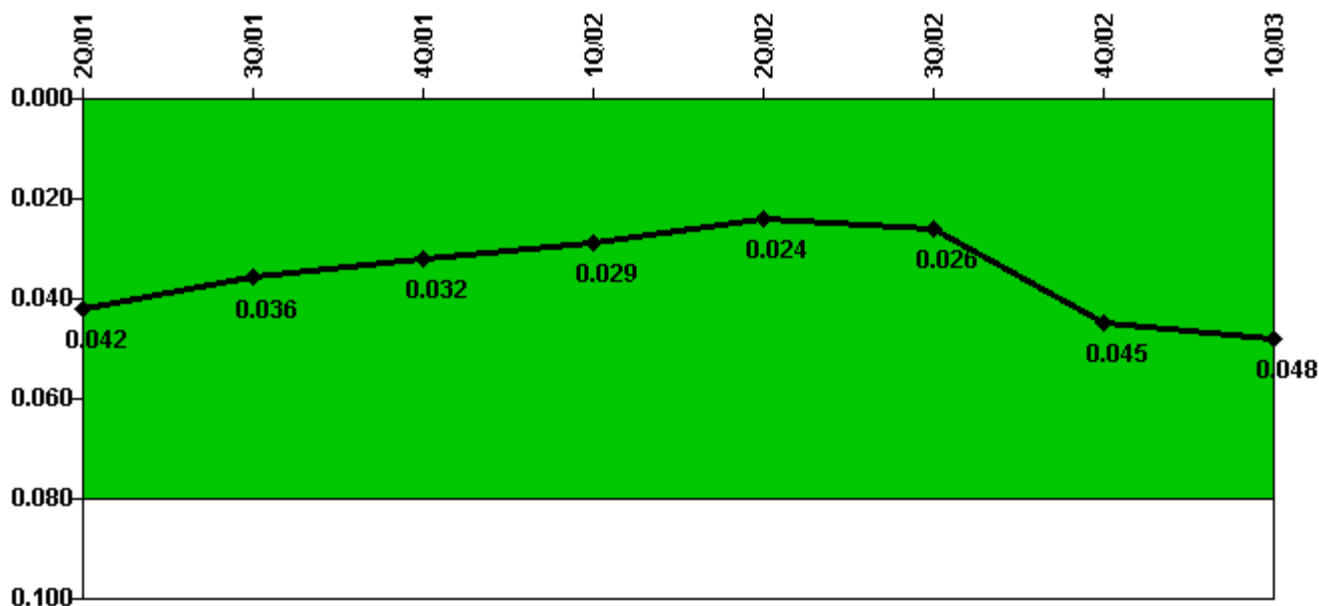
Thresholds: White > 1.0 Yellow > 3.0

#### Notes

RETS/ODCM Radiological Effluent	2Q/01	3Q/01	4Q/01	1Q/02	2Q/02	3Q/02	4Q/02	1Q/03
RETS/ODCM occurrences	0	0	0	0	0	0	0	0
Indicator value	0	0	0	0	0	0	0	0

Licensee Comments: none

### Protected Area Security Performance Index



Thresholds: White > 0.080

#### Notes

Protected Area Security Performance Index	2Q/01	3Q/01	4Q/01	1Q/02	2Q/02	3Q/02	4Q/02	1Q/03
IDS compensatory hours	311.00	67.90	161.00	170.80	174.22	137.62	51.34	178.70
CCTV compensatory hours	0	8.8	0	0	3.3	0	451.6	56.0
IDS normalization factor	1.40	1.40	1.40	1.40	1.40	1.40	1.40	1.40
CCTV normalization factor	1.1	1.1	1.1	1.1	1.1	1.1	1.1	1.1
Index Value	0.042	0.036	0.032	0.029	0.024	0.026	0.045	0.048

Licensee Comments: none



### Personnel Screening Program



Thresholds: White > 2.0 Yellow > 5.0

#### Notes

Personnel Screening Program	2Q/01	3Q/01	4Q/01	1Q/02	2Q/02	3Q/02	4Q/02	1Q/03
Program failures	0	0	0	0	0	0	0	0
Indicator value	0	0	0	0	0	0	0	0

Licensee Comments: none

### FFD/Personnel Reliability



Thresholds: White > 2.0 Yellow > 5.0

#### Notes

FFD/Personnel Reliability	2Q/01	3Q/01	4Q/01	1Q/02	2Q/02	3Q/02	4Q/02	1Q/03
Program Failures	0	0	0	0	0	0	0	0
Indicator value	0	0	0	0	0	0	0	0

Licensee Comments: none

▲ [PI Summary](#) | [Inspection Findings Summary](#) | [Reactor Oversight Process](#)

Last Modified: April 22, 2003