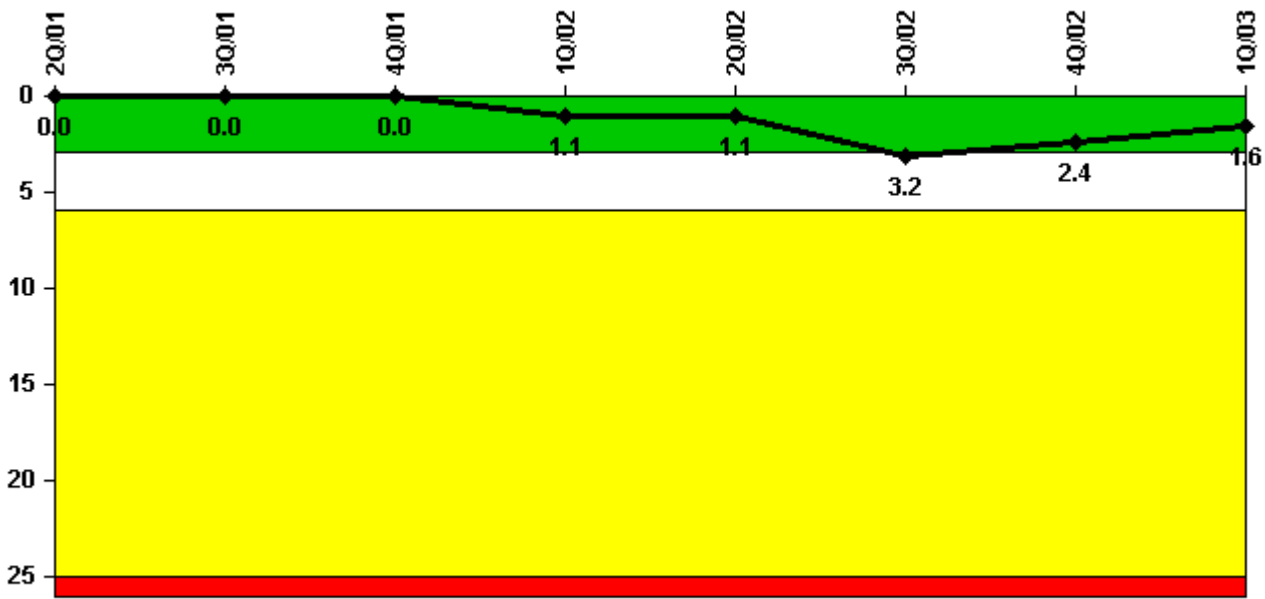


# Harris 1

## 1Q/2003 Performance Indicators

Licensee's General Comments: Includes changes to Q1/2002, Q2/2002, Q3/2002, Q4/2002 and Q1/2003 data. None of these changes affect the color of the performance indicator.

### Unplanned Scrams per 7000 Critical Hrs



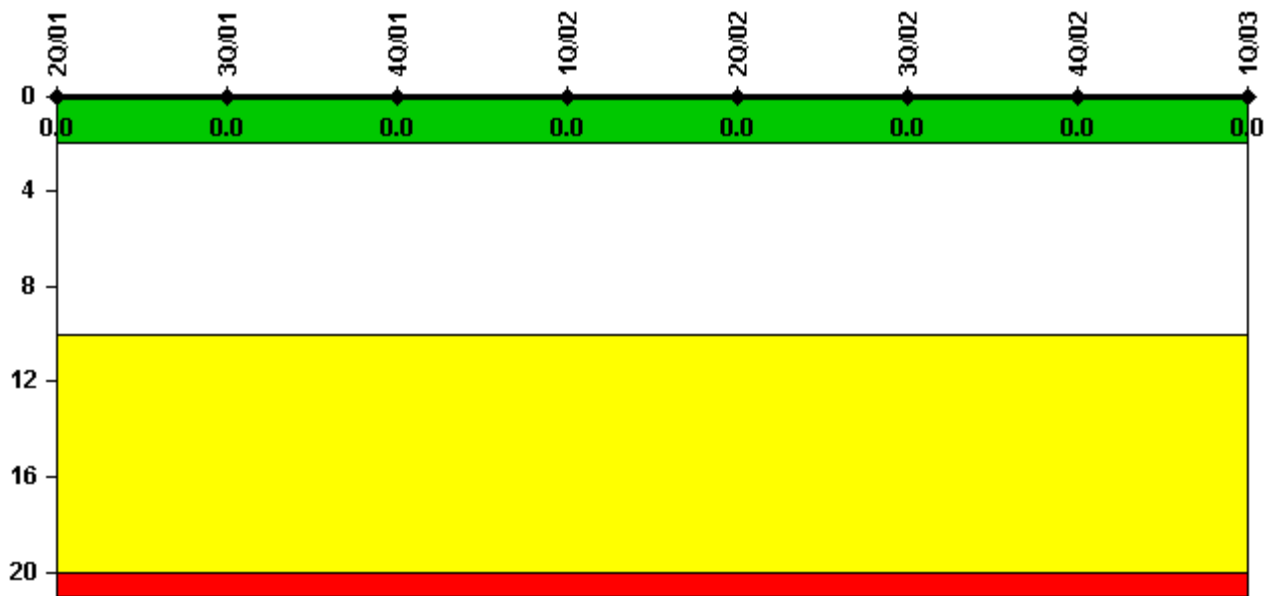
Thresholds: White > 3.0 Yellow > 6.0 Red > 25.0

### Notes

Unplanned Scrams per 7000 Critical Hrs	2Q/01	3Q/01	4Q/01	1Q/02	2Q/02	3Q/02	4Q/02	1Q/03
Unplanned scrams	0	0	0	1.0	0	2.0	0	0
Critical hours	2183.0	1992.2	7.5	2142.3	2184.0	2173.9	2209.0	2160.0
Indicator value	0	0	0	1.1	1.1	3.2	2.4	1.6

Licensee Comments: none

### Scrams with Loss of Normal Heat Removal



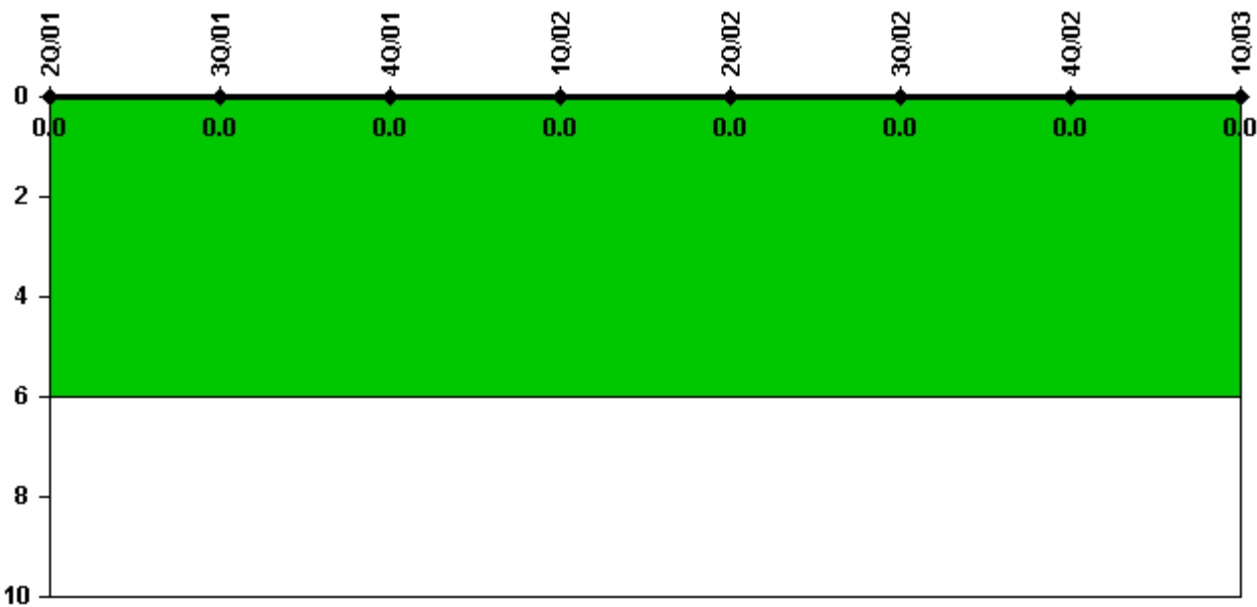
Thresholds: White > 2.0 Yellow > 10.0 Red > 20.0

#### Notes

Scrams with Loss of Normal Heat Removal	2Q/01	3Q/01	4Q/01	1Q/02	2Q/02	3Q/02	4Q/02	1Q/03
Scrams	0	0	0	0	0	0	0	0
Indicator value	0	0	0	0	0	0	0	0

Licensee Comments: none

### Unplanned Power Changes per 7000 Critical Hrs



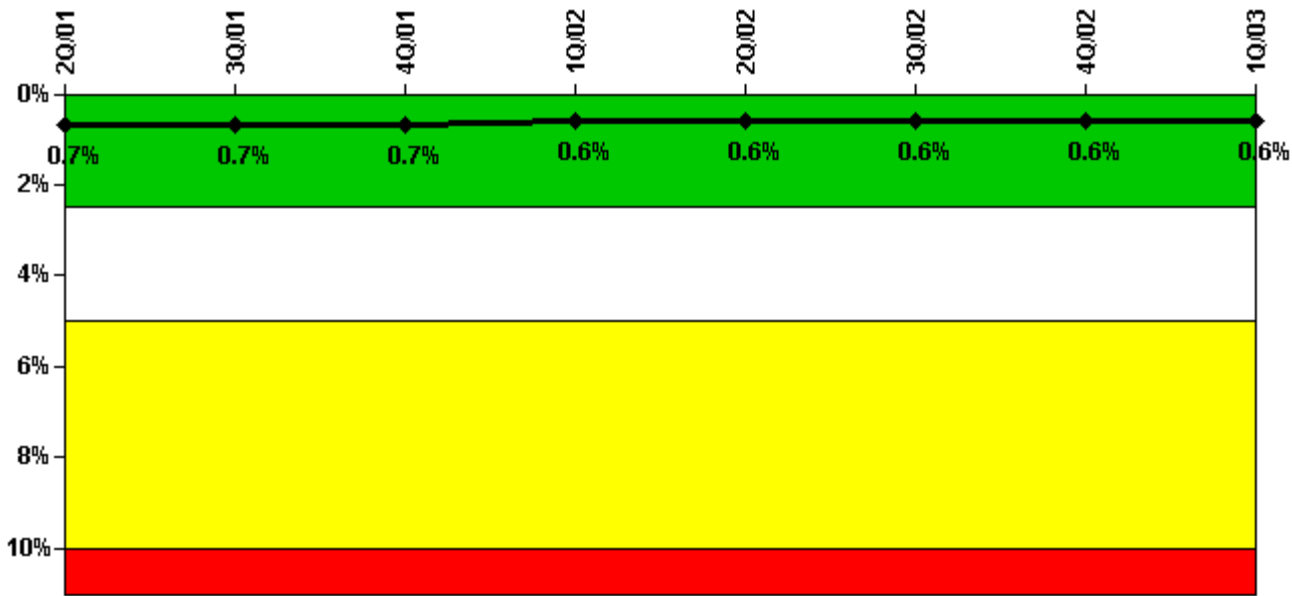
Thresholds: White > 6.0

#### Notes

Unplanned Power Changes per 7000 Critical Hrs	2Q/01	3Q/01	4Q/01	1Q/02	2Q/02	3Q/02	4Q/02	1Q/03
Unplanned power changes	0	0	0	0	0	0	0	0
Critical hours	2183.0	1992.2	7.5	2142.3	2184.0	2173.9	2209.0	2160.0
Indicator value	0	0	0	0	0	0	0	0

Licensee Comments: none

### Safety System Unavailability, Emergency AC Power



Thresholds: White > 2.5% Yellow > 5.0% Red > 10.0%

#### Notes

Safety System Unavailability, Emergency AC Power	2Q/01	3Q/01	4Q/01	1Q/02	2Q/02	3Q/02	4Q/02	1Q/03
<b>Train 1</b>								
Planned unavailable hours	3.49	21.09	1.22	16.98	4.48	10.47	11.20	1.97
Unplanned unavailable hours	0.20	0	0	0	0	0	3.20	0
Fault exposure hours	0	0	0	0	0	0	0	0
Effective Reset hours	0	0	0	0	0	0	0	0
Required hours	2183.00	2005.50	837.57	2160.00	2184.00	2208.00	2209.00	2160.00
<b>Train 2</b>								
Planned unavailable hours	12.93	1.78	0	14.29	12.35	1.43	17.25	24.03
Unplanned unavailable hours	9.26	0	0	0	11.95	0	0	0
Fault exposure hours	0	0	0	0	0	0	0	0
Effective Reset hours	0	0	0	0	0	0	0	0
Required hours	2183.00	2208.00	727.97	2160.00	2184.00	2208.00	2209.00	2160.00
Indicator value	0.7%	0.7%	0.7%	0.6%	0.6%	0.6%	0.6%	0.6%

#### Licensee Comments:

4Q/02: Train 1 and 2 planned unavailable hours were transposed for the month of December 2002 and have been corrected. These changes do not affect PI color.

3Q/02: Corrected planned unavailable hours for Train 2 for 9/2002. Support system maintenance on 9/4/2002 did not result in unavailable time as originally submitted. This change does not affect PI color.

2Q/02: Added .47 hours to Train 1 Planned unavailability for 5/2002. This change does not affect PI color.

### Safety System Unavailability, High Pressure Injection System (HPSI)



Thresholds: White > 1.5% Yellow > 5.0% Red > 10.0%

**Notes**

Safety System Unavailability, High Pressure Injection System (HPSI)	2Q/01	3Q/01	4Q/01	1Q/02	2Q/02	3Q/02	4Q/02	1Q/03
<b>Train 1</b>								
Planned unavailable hours	25.40	36.36	0	29.17	16.07	18.05	15.22	71.33
Unplanned unavailable hours	0	0	0	10.45	0.55	0	18.73	0
Fault exposure hours	0	0	0	0	0	0	0	0
Effective Reset hours	0	0	0	0	0	0	0	0
Required hours	2183.00	2005.50	108.28	2160.00	2184.00	2208.00	2209.00	2160.00
<b>Train 2</b>								
Planned unavailable hours	30.65	8.52	0	10.90	22.90	16.13	6.68	37.72
Unplanned unavailable hours	8.95	0	0	0	0	0	0	7.65
Fault exposure hours	0	0	0	0	0	0	0	0
Effective Reset hours	0	0	0	0	0	0	0	0
Required hours	2183.00	2005.50	108.28	2160.00	2184.00	2208.00	2209.00	2160.00
<b>Indicator value</b>	<b>0.5%</b>	<b>0.6%</b>	<b>0.6%</b>	<b>0.6%</b>	<b>0.6%</b>	<b>0.6%</b>	<b>0.7%</b>	<b>0.9%</b>

Licensee Comments:

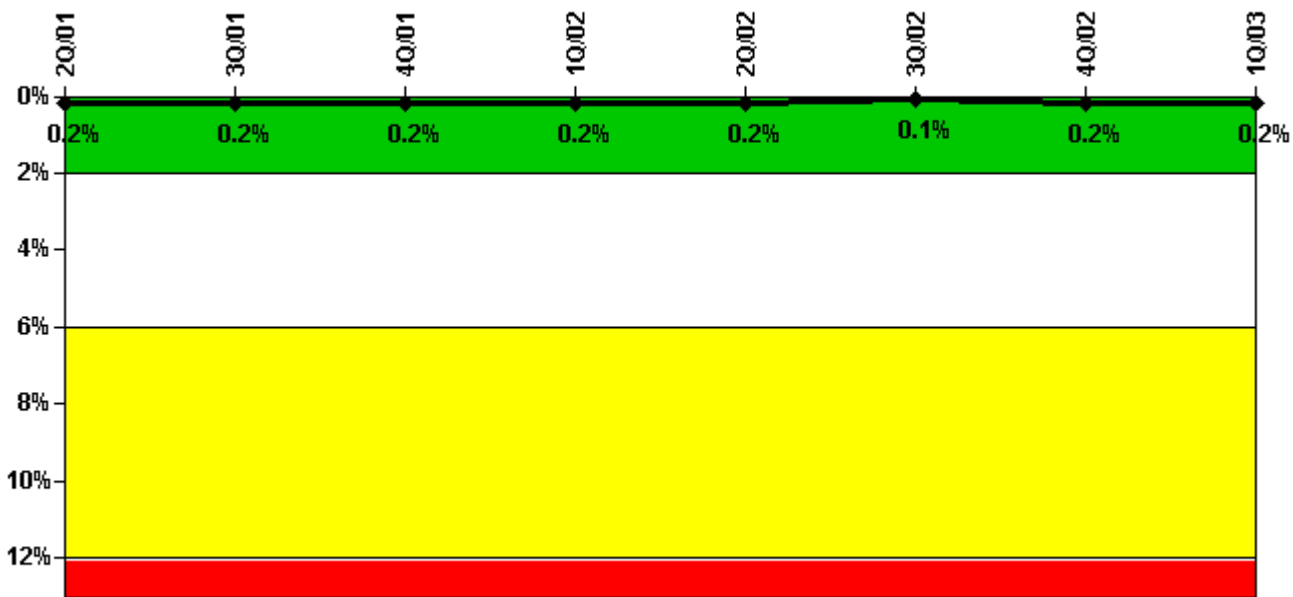
4Q/02: Corrected Train 1 planned and unplanned unavailability for 11/2002. Also corrected Train 1 unplanned

unavailability and Train 2 Planned unavailability for 12/2002. These changes do not affect PI color.

2Q/02: Corrected 5/2002 (Train 1) and (Train 2) 6/2002 planned unavailability. These changes do not affect PI color.

1Q/02: Corrected (Train 1) 1/2002 and (Train 1 and 2) 2/2002 planned unavailable hours. This change does not affect PI color.

### Safety System Unavailability, Heat Removal System (AFW)



Thresholds: White > 2.0% Yellow > 6.0% Red > 12.0%

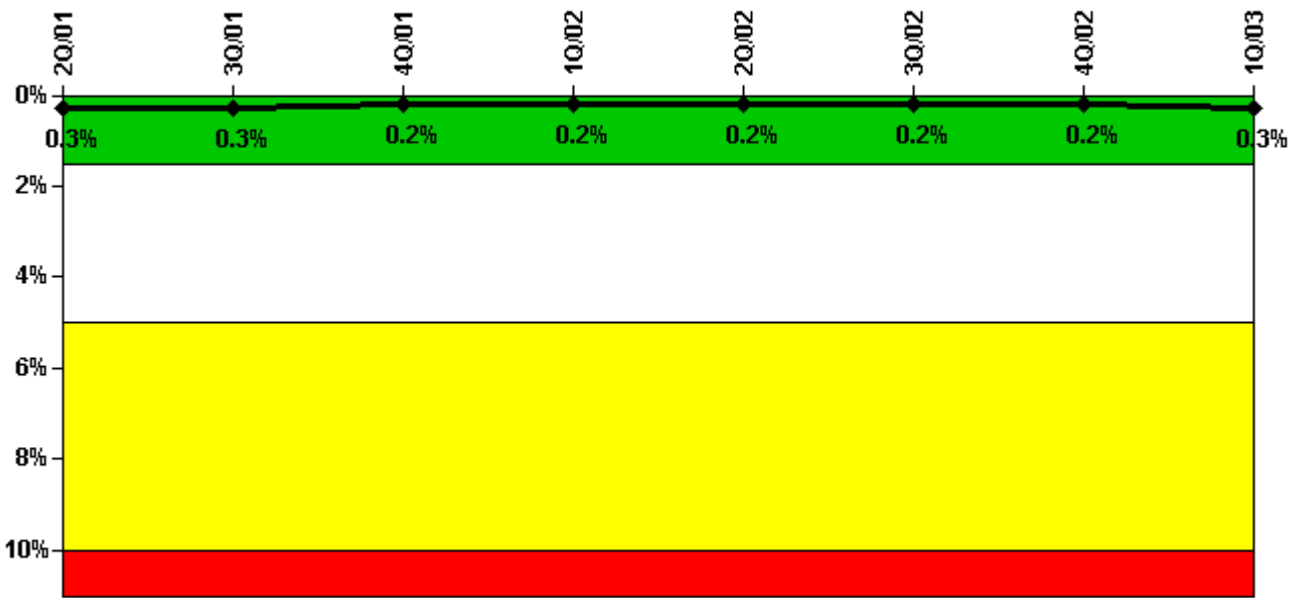
#### Notes

Safety System Unavailability, Heat Removal System (AFW)	2Q/01	3Q/01	4Q/01	1Q/02	2Q/02	3Q/02	4Q/02	1Q/03
<b>Train 1</b>								
Planned unavailable hours	1.17	0	0	0	0	0.73	0	0
Unplanned unavailable hours	4.27	0	0	0	0	0	0	0
Fault exposure hours	0	0	0	0	0	0	0	0
Effective Reset hours	0	0	0	0	0	0	0	0
Required hours	2183.00	1996.72	68.72	2160.00	2184.00	2208.00	2209.00	2160.00
<b>Train 2</b>								
Planned unavailable hours	0	3.38	0	0	6.00	0	0	1.50
Unplanned unavailable hours	1.38	0	0	0	0	0	0	0
Fault exposure hours	0	0	0	0	0	0	0	0
Effective Reset hours	0	0	0	0	0	0	0	0

Required hours	2183.00	1996.72	68.72	2160.00	2184.00	2208.00	2209.00	2160.00
<b>Train 3</b>								
Planned unavailable hours	6.83	8.47	0	11.67	0	0	9.00	21.17
Unplanned unavailable hours	0	0	0	0	1.20	0	0	0
Fault exposure hours	0	0	0	0	0	0	0	0
Effective Reset hours	0	0	0	0	0	0	0	0
Required hours	2183.00	1996.72	68.72	2160.00	2184.00	2208.00	2209.00	2160.00
<b>Indicator value</b>	<b>0.2%</b>	<b>0.2%</b>	<b>0.2%</b>	<b>0.2%</b>	<b>0.2%</b>	<b>0.1%</b>	<b>0.2%</b>	<b>0.2%</b>

Licensee Comments: none

### Safety System Unavailability, Residual Heat Removal System



Thresholds: White > 1.5% Yellow > 5.0% Red > 10.0%

### Notes

Safety System Unavailability, Residual Heat Removal System	2Q/01	3Q/01	4Q/01	1Q/02	2Q/02	3Q/02	4Q/02	1Q/03
<b>Train 1</b>								
Planned unavailable hours	0	8.70	0	19.28	3.99	3.40	8.58	3.82
Unplanned unavailable hours	0	0	0	0	0	0	0	0
Fault exposure hours	0	0	0	0	0	0	0	0
Effective Reset hours	0	0	0	0	0	0	0	0
Required hours	2183.00	2208.00	726.75	2160.00	2184.00	2208.00	2209.00	2160.00
<b>Train 2</b>								

Planned unavailable hours	1.20	8.30	0	4.40	14.97	0	1.82	28.20
Unplanned unavailable hours	0	3.70	0	0	0	0	0	0
Fault exposure hours	0	7.70	0	0	0	0	0	0
Effective Reset hours	0	0	0	0	0	0	0	0
Required hours	2183.00	2208.00	726.75	2160.00	2184.00	2208.00	2209.00	2160.00
Indicator value	0.3%	0.3%	0.2%	0.2%	0.2%	0.2%	0.2%	0.3%

Licensee Comments:

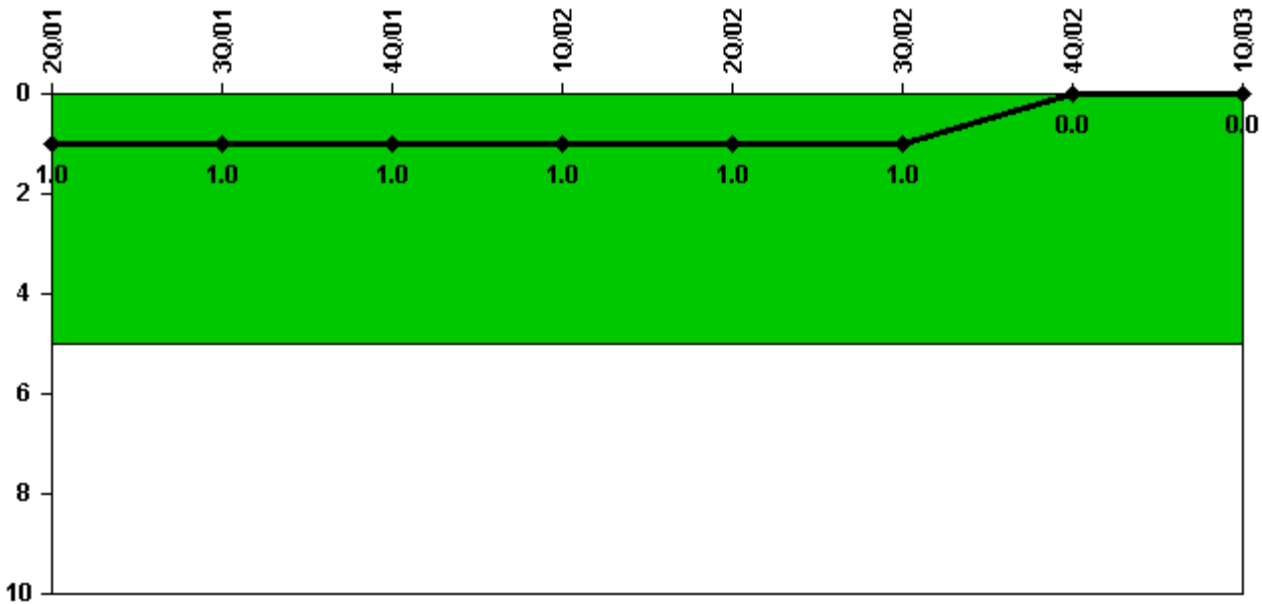
4Q/02: Corrected 11/2002 Train 1 planned unavailable hours. This change does not affect PI color.

3Q/02: Corrected Train 1 7/2002 planned unavailable hours. This change does not affect PI color.

2Q/02: Corrected 5/2002 Train 1 planned unavailable hours and 6/2002 Train 2 planned unavailable hours. These changes do not affect PI color.

1Q/02: Corrected 2/2002 Train 1 planned unavailability. This change does not affect PI color.

### Safety System Functional Failures (PWR)



Thresholds: White > 5.0

Notes

Safety System Functional Failures (PWR)	2Q/01	3Q/01	4Q/01	1Q/02	2Q/02	3Q/02	4Q/02	1Q/03
Safety System Functional Failures	0	0	1	0	0	0	0	0

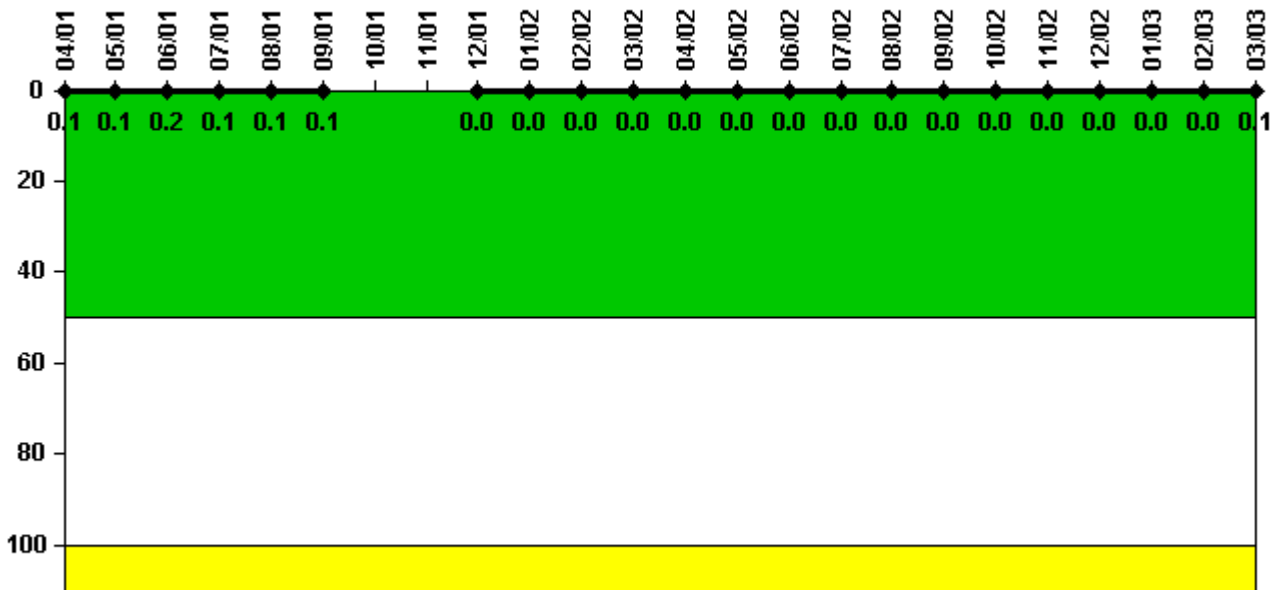


Indicator value	1	1	1	1	1	1	0	0

Licensee Comments:

1Q/03: LER's 2002-004-00 and 2002-004-01 describe conditions where the impact of "potential" fires could possibly result in hot short conditions that could lead to re-positioning of valves. The results of the repositioning events have the potential to impact safety-related equipment, including RHR and Charging/Safety Injection. In one scenario, the RWST could be transferred to the containment recirculation sump due to the opening of two valves in series between the RWST and the containment recirculation sump. None of these potential conditions result in both trains of either RHR or Charging/Safety Injection becoming unavailable. Additionally, in the event of transfer of borated water from the RWST to the containment sump, the water is still available for low and high head safety injection, long-term cooling, and containment cooling via suction from the containment recirculation sump. No Safety System Function is lost in the event any of the potential fire-induced hot shorts occur. Therefore, no SSFF is reported under this NRC PI.

### Reactor Coolant System Activity



Thresholds: White > 50.0 Yellow > 100.0

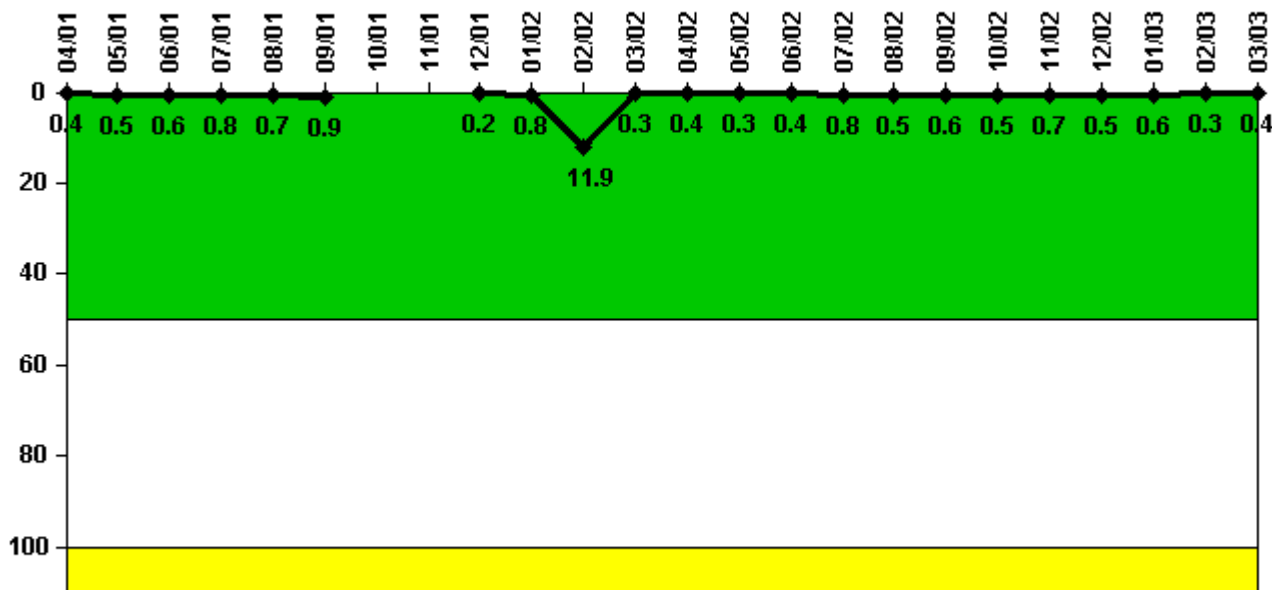
Notes

Reactor Coolant System Activity	4/01	5/01	6/01	7/01	8/01	9/01	10/01	11/01	12/01	1/02	2/02	3/02
Maximum activity	0.000837	0.000939	0.002140	0.001430	0.001323	0.001280	N/A	N/A	0	0.000126	0.000197	0.000185
Technical specification limit	1.0	1.0	1.0	1.0	1.0	1.0	1.0	1.0	1.0	1.0	1.0	1.0

Indicator value	0.1	0.1	0.2	0.1	0.1	0.1	N/A	N/A	0	0	0	0
Reactor Coolant System Activity	4/02	5/02	6/02	7/02	8/02	9/02	10/02	11/02	12/02	1/03	2/03	3/03
Maximum activity	0.000241	0.000157	0.000212	0.000160	0.000165	0.000355	0.000189	0.000181	0.000187	0.000194	0.000199	0.000732
Technical specification limit	1.0	1.0	1.0	1.0	1.0	1.0	1.0	1.0	1.0	1.0	1.0	1.0
Indicator value	0	0	0	0	0	0	0	0	0	0	0	0.1

Licensee Comments: none

### Reactor Coolant System Leakage



Thresholds: White > 50.0 Yellow > 100.0

### Notes

Reactor Coolant System Leakage	4/01	5/01	6/01	7/01	8/01	9/01	10/01	11/01	12/01	1/02	2/02	3/02
Maximum leakage	0.040	0.050	0.060	0.080	0.070	0.090	N/A	N/A	0.020	0.080	1.190	0.030
Technical specification limit	10.0	10.0	10.0	10.0	10.0	10.0	10.0	10.0	10.0	10.0	10.0	10.0
Indicator value	0.4	0.5	0.6	0.8	0.7	0.9	N/A	N/A	0.2	0.8	11.9	0.3

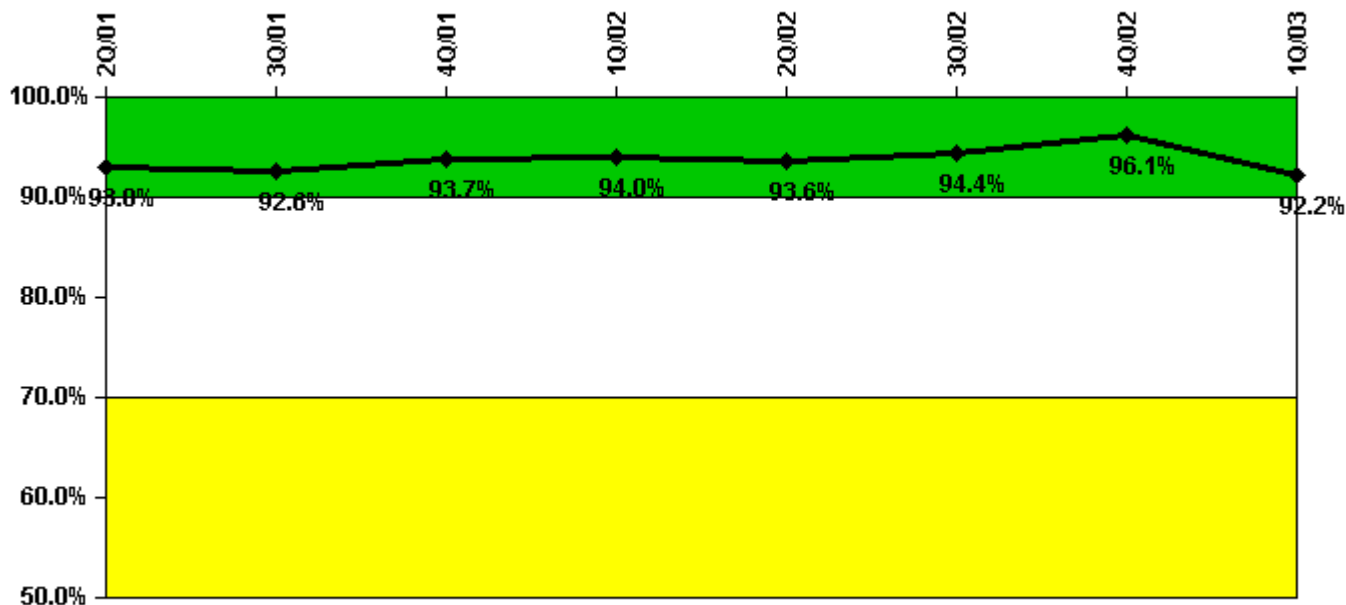
  

Reactor Coolant System Leakage	4/02	5/02	6/02	7/02	8/02	9/02	10/02	11/02	12/02	1/03	2/03	3/03
Maximum leakage	0.040	0.030	0.040	0.080	0.050	0.060	0.050	0.070	0.050	0.060	0.030	0.040
Technical specification limit	10.0	10.0	10.0	10.0	10.0	10.0	10.0	10.0	10.0	10.0	10.0	10.0

Indicator value	0.4	0.3	0.4	0.8	0.5	0.6	0.5	0.7	0.5	0.6	0.3	0.4
-----------------	-----	-----	-----	-----	-----	-----	-----	-----	-----	-----	-----	-----

Licensee Comments: none

### Drill/Exercise Performance



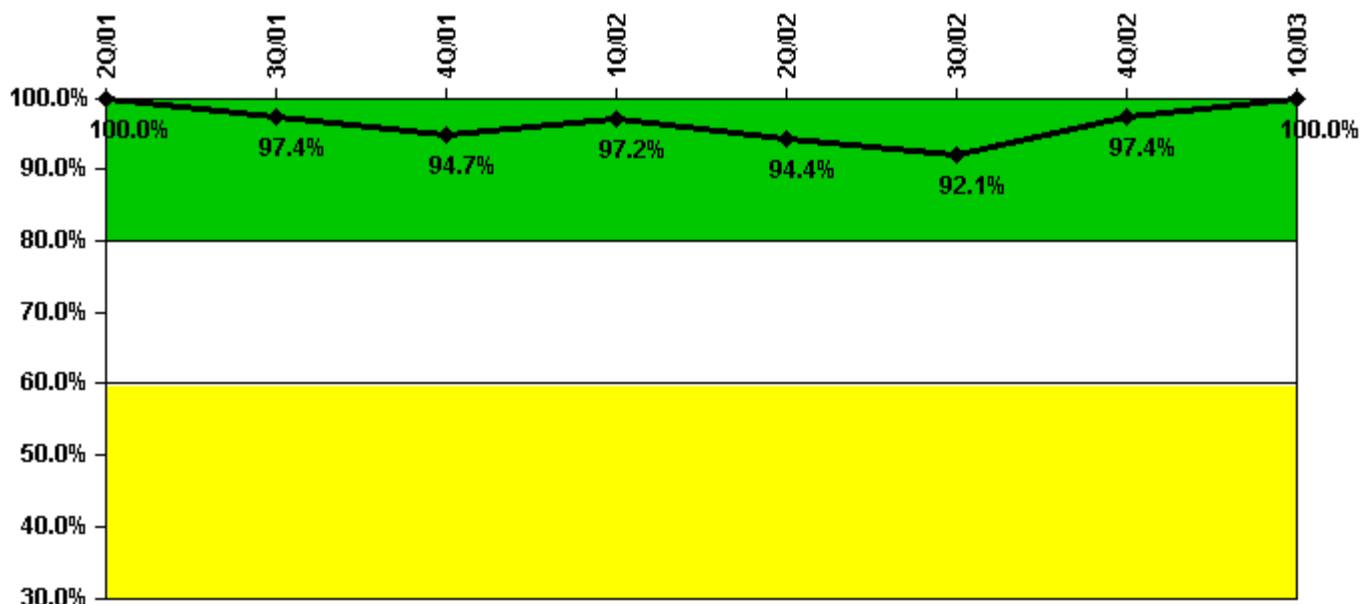
Thresholds: White < 90.0% Yellow < 70.0%

### Notes

Drill/Exercise Performance	2Q/01	3Q/01	4Q/01	1Q/02	2Q/02	3Q/02	4Q/02	1Q/03
Successful opportunities	26.0	4.0	2.0	52.0	10.0	18.0	26.0	63.0
Total opportunities	26.0	4.0	2.0	57.0	10.0	18.0	28.0	73.0
Indicator value	93.0%	92.6%	93.7%	94.0%	93.6%	94.4%	96.1%	92.2%

Licensee Comments: none

### ERO Drill Participation



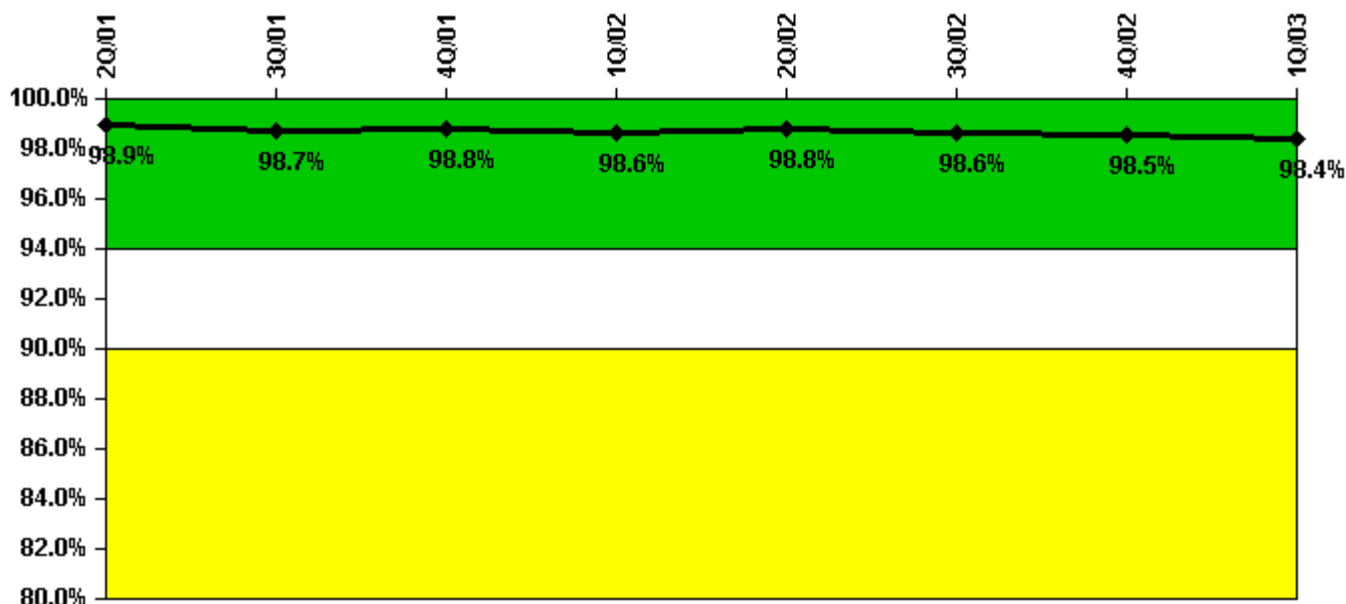
Thresholds: White < 80.0% Yellow < 60.0%

#### Notes

ERO Drill Participation	2Q/01	3Q/01	4Q/01	1Q/02	2Q/02	3Q/02	4Q/02	1Q/03
Participating Key personnel	37.0	37.0	36.0	35.0	34.0	35.0	38.0	37.0
Total Key personnel	37.0	38.0	38.0	36.0	36.0	38.0	39.0	37.0
Indicator value	100.0%	97.4%	94.7%	97.2%	94.4%	92.1%	97.4%	100.0%

Licensee Comments: none

### Alert & Notification System



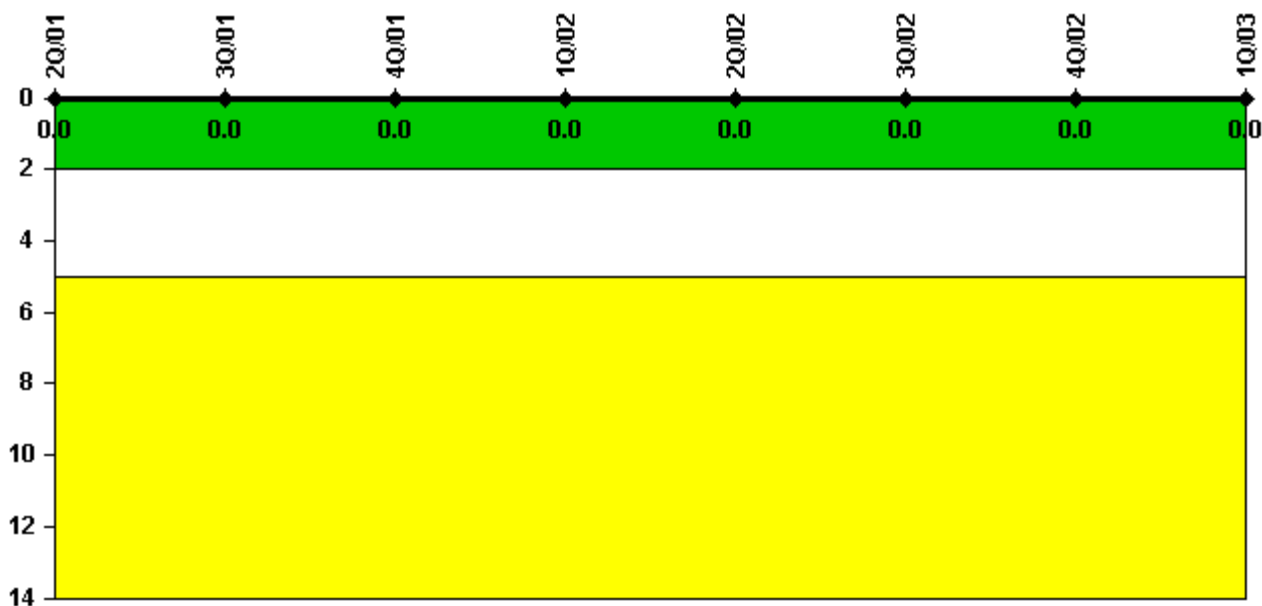
Thresholds: White < 94.0% Yellow < 90.0%

#### Notes

Alert & Notification System	2Q/01	3Q/01	4Q/01	1Q/02	2Q/02	3Q/02	4Q/02	1Q/03
Successful siren-tests	559	594	682	642	564	708	640	558
Total sirens-tests	567	607	689	648	567	729	648	567
Indicator value	98.9%	98.7%	98.8%	98.6%	98.8%	98.6%	98.5%	98.4%

Licensee Comments: none

### Occupational Exposure Control Effectiveness



Thresholds: White > 2.0 Yellow > 5.0

**Notes**

Occupational Exposure Control Effectiveness	2Q/01	3Q/01	4Q/01	1Q/02	2Q/02	3Q/02	4Q/02	1Q/03
High radiation area occurrences	0	0	0	0	0	0	0	0
Very high radiation area occurrences	0	0	0	0	0	0	0	0
Unintended exposure occurrences	0	0	0	0	0	0	0	0
Indicator value	0	0	0	0	0	0	0	0

Licensee Comments: none

### RETS/ODCM Radiological Effluent



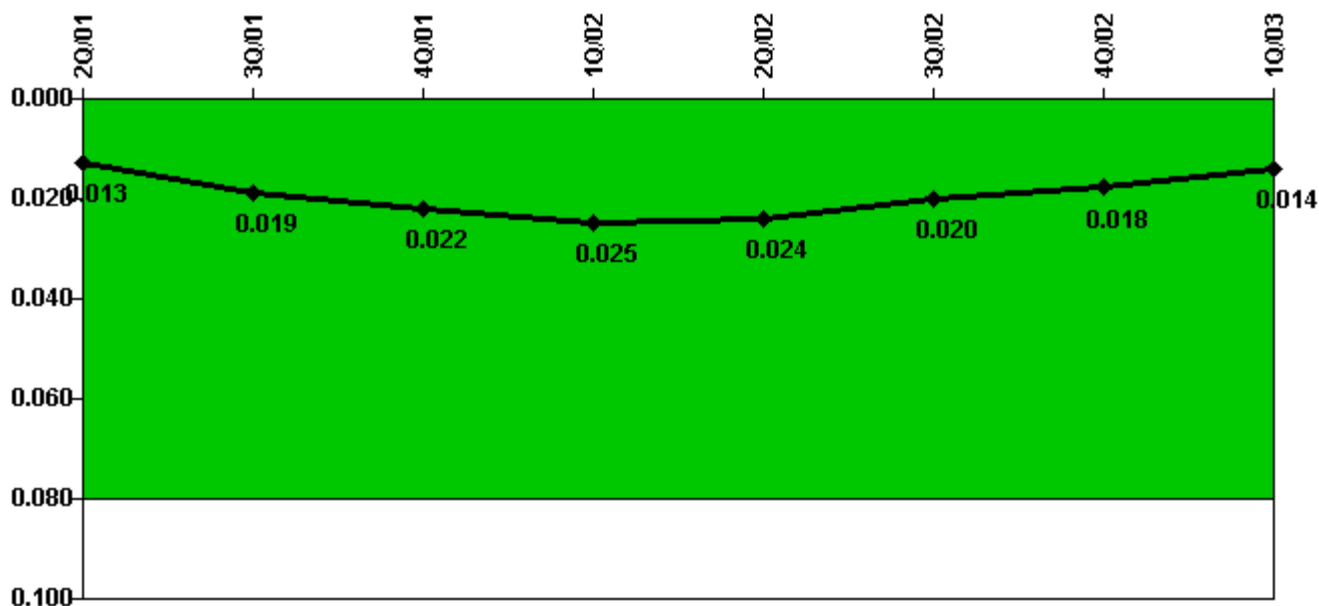
Thresholds: White > 1.0 Yellow > 3.0

#### Notes

RETS/ODCM Radiological Effluent	2Q/01	3Q/01	4Q/01	1Q/02	2Q/02	3Q/02	4Q/02	1Q/03
RETS/ODCM occurrences	0	0	0	0	0	0	0	0
Indicator value	0	0	0	0	0	0	0	0

Licensee Comments: none

### Protected Area Security Performance Index



Thresholds: White > 0.080

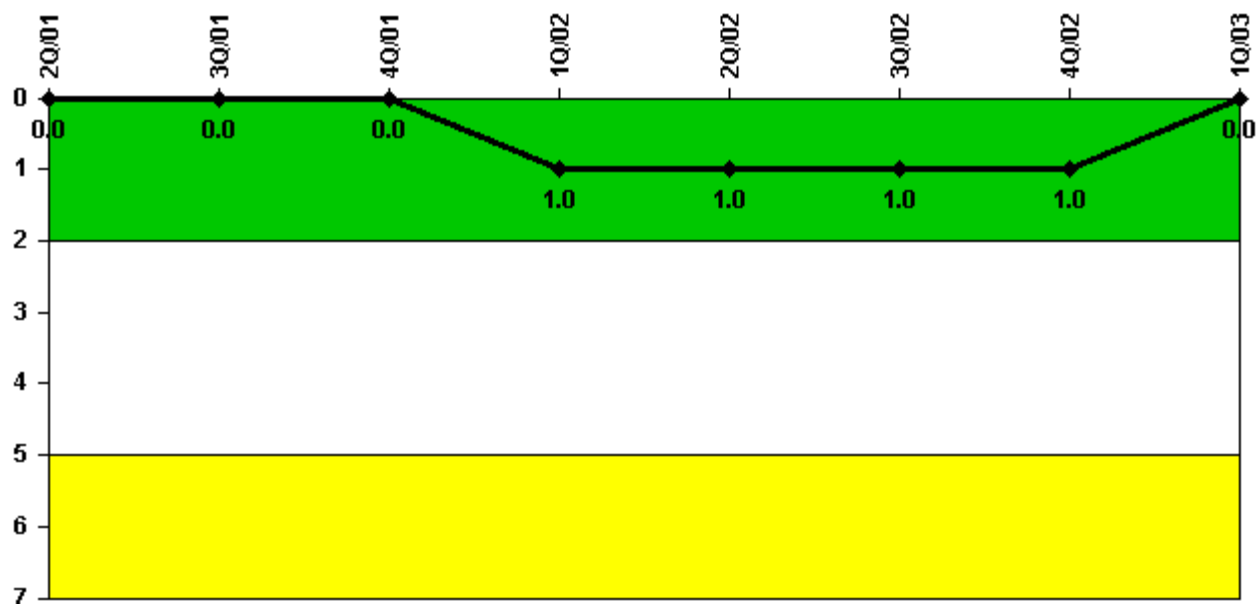
#### Notes

Protected Area Security Performance Index	2Q/01	3Q/01	4Q/01	1Q/02	2Q/02	3Q/02	4Q/02	1Q/03
IDS compensatory hours	256.70	332.20	250.40	353.08	184.08	229.30	133.90	77.00
CCTV compensatory hours	0.5	36.4	0	0	3.1	0	5.3	18.8
IDS normalization factor	2.85	2.85	2.85	2.85	2.85	2.85	2.85	2.85
CCTV normalization factor	1.4	1.4	1.4	1.4	1.4	1.4	1.4	1.4
Index Value	0.013	0.019	0.022	0.025	0.024	0.020	0.018	0.014

Licensee Comments: none



### Personnel Screening Program



Thresholds: White > 2.0 Yellow > 5.0

#### Notes

Personnel Screening Program	2Q/01	3Q/01	4Q/01	1Q/02	2Q/02	3Q/02	4Q/02	1Q/03
Program failures	0	0	0	1	0	0	0	0
Indicator value	0	0	0	1	1	1	1	0

Licensee Comments: none

### FFD/Personnel Reliability



Thresholds: White > 2.0 Yellow > 5.0

#### Notes

FFD/Personnel Reliability	2Q/01	3Q/01	4Q/01	1Q/02	2Q/02	3Q/02	4Q/02	1Q/03
Program Failures	0	0	0	0	0	0	0	0
Indicator value	0	0	0	0	0	0	0	0

Licensee Comments: none

▲ [PI Summary](#) | [Inspection Findings Summary](#) | [Reactor Oversight Process](#)

Last Modified: April 22, 2003