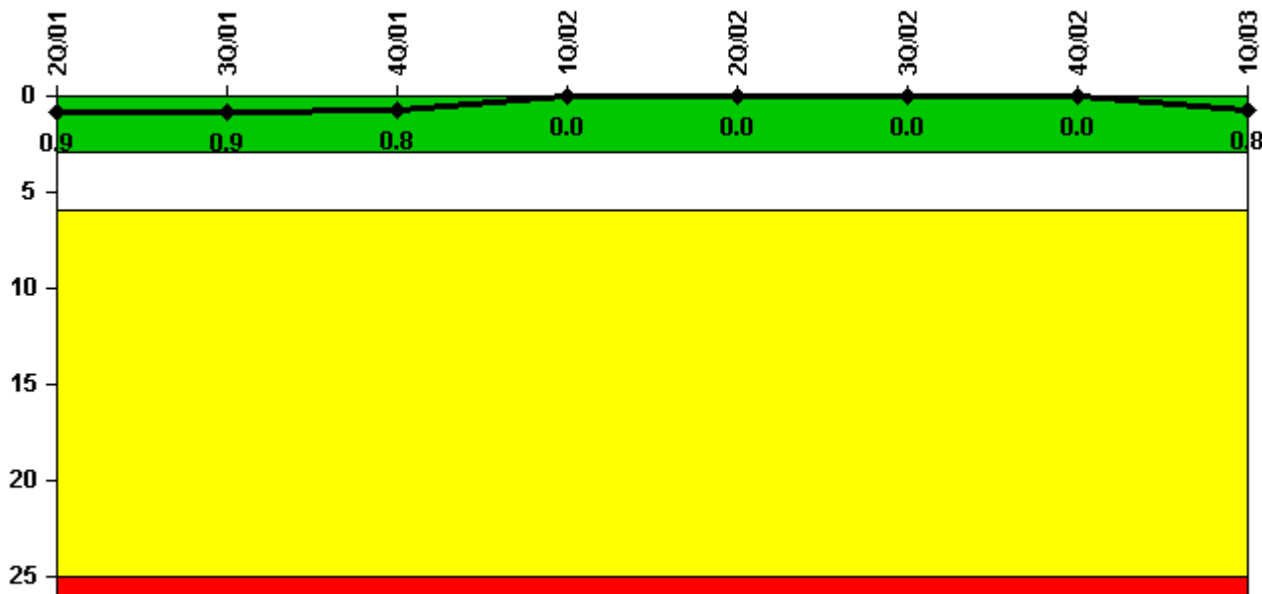


# Catawba 1

## 1Q/2003 Performance Indicators

Licensee's General Comments: none

### Unplanned Scrams per 7000 Critical Hrs



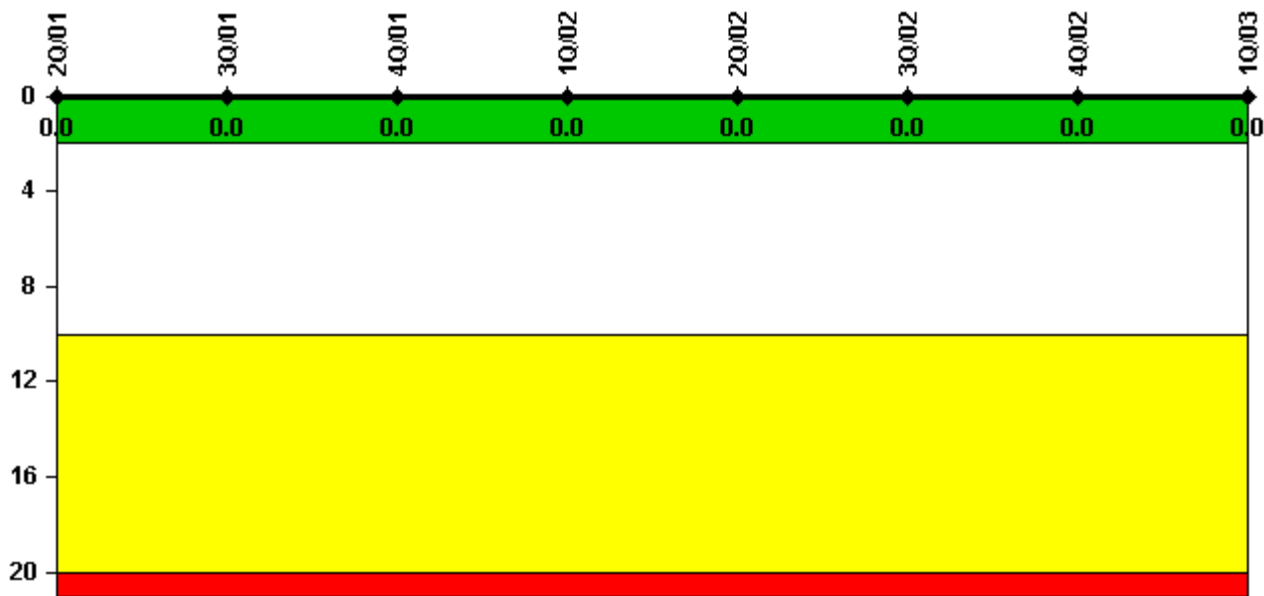
Thresholds: White > 3.0 Yellow > 6.0 Red > 25.0

### Notes

Unplanned Scrams per 7000 Critical Hrs	2Q/01	3Q/01	4Q/01	1Q/02	2Q/02	3Q/02	4Q/02	1Q/03
Unplanned scrams	0	0	0	0	0	0	0	1.0
Critical hours	2183.0	2208.0	2209.0	2160.0	1695.0	2208.0	2209.0	2129.0
Indicator value	0.9	0.9	0.8	0	0	0	0	0.8

Licensee Comments: none

### Scrams with Loss of Normal Heat Removal



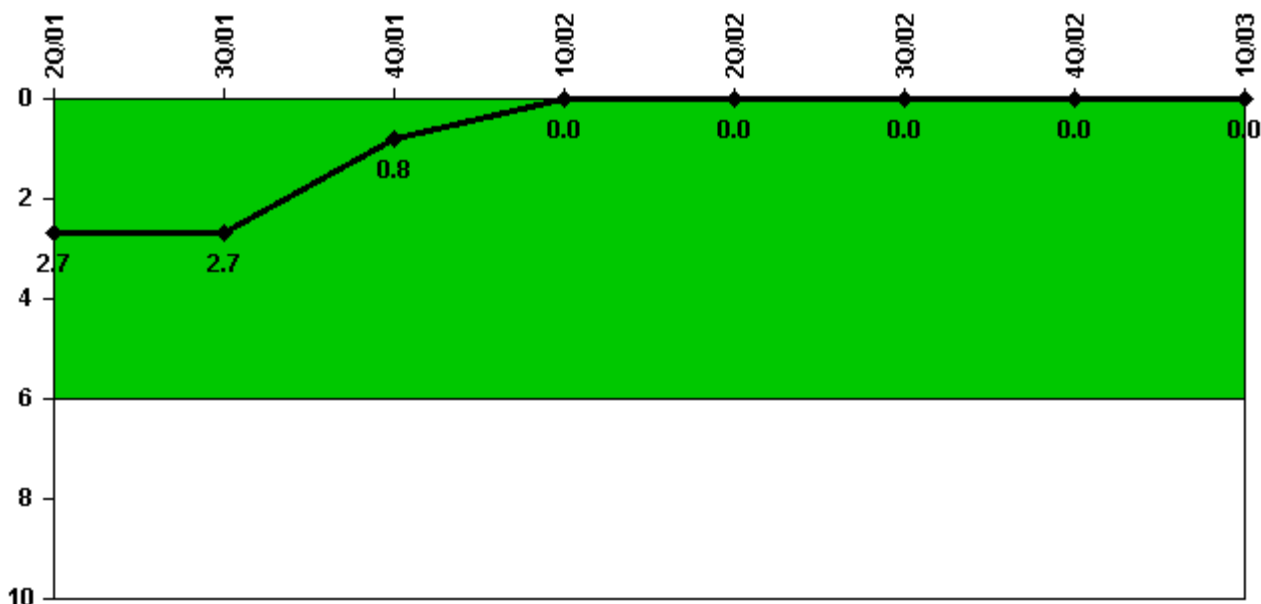
Thresholds: White > 2.0 Yellow > 10.0 Red > 20.0

#### Notes

Scrams with Loss of Normal Heat Removal	2Q/01	3Q/01	4Q/01	1Q/02	2Q/02	3Q/02	4Q/02	1Q/03
Scrams	0	0	0	0	0	0	0	0
Indicator value	0	0	0	0	0	0	0	0

Licensee Comments: none

### Unplanned Power Changes per 7000 Critical Hrs



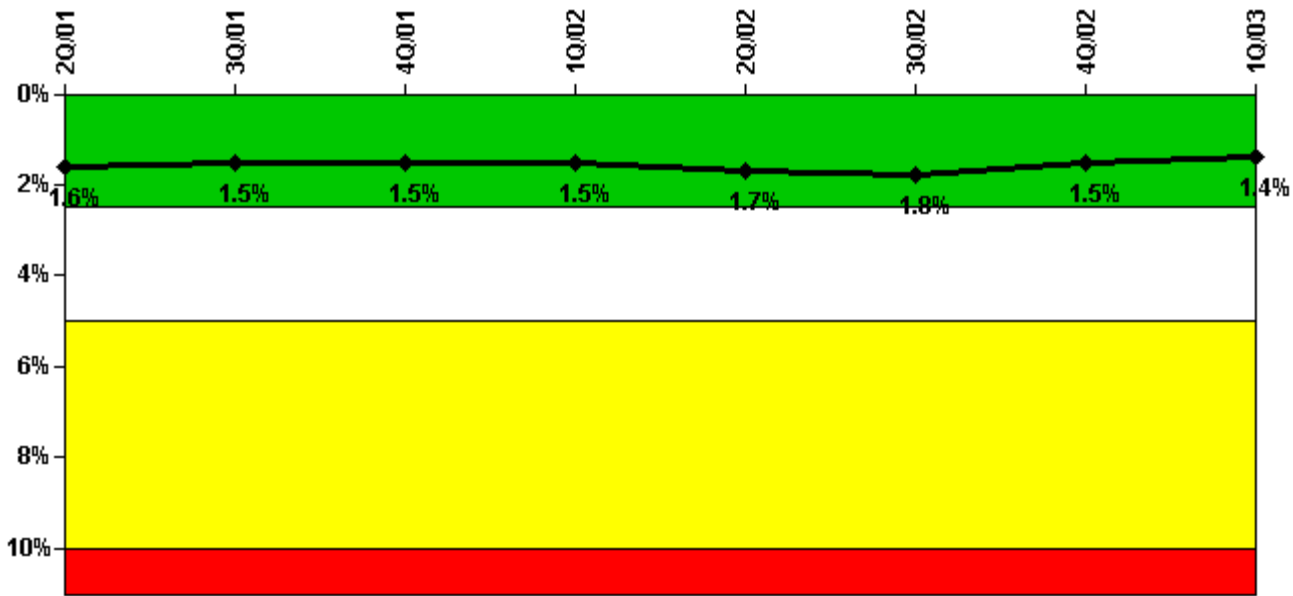
Thresholds: White > 6.0

#### Notes

Unplanned Power Changes per 7000 Critical Hrs	2Q/01	3Q/01	4Q/01	1Q/02	2Q/02	3Q/02	4Q/02	1Q/03
Unplanned power changes	0	0	0	0	0	0	0	0
Critical hours	2183.0	2208.0	2209.0	2160.0	1695.0	2208.0	2209.0	2129.0
Indicator value	2.7	2.7	0.8	0	0	0	0	0

Licensee Comments: none

### Safety System Unavailability, Emergency AC Power



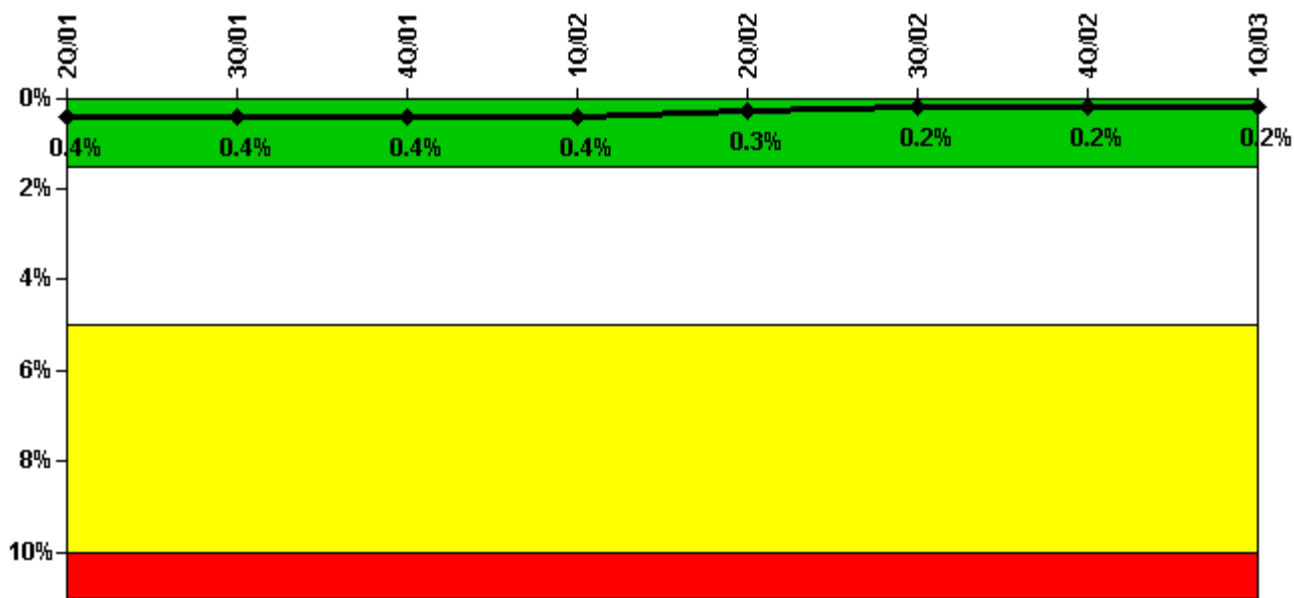
Thresholds: White > 2.5% Yellow > 5.0% Red > 10.0%

#### Notes

Safety System Unavailability, Emergency AC Power	2Q/01	3Q/01	4Q/01	1Q/02	2Q/02	3Q/02	4Q/02	1Q/03
<b>Train 1</b>								
Planned unavailable hours	6.06	3.35	2.55	50.15	0	34.18	21.32	0
Unplanned unavailable hours	0	0	0	0	0	0	0	0
Fault exposure hours	0	0	0	0	0	0	0	0
Effective Reset hours	0	0	0	0	0	0	0	0
Required hours	2184.00	2208.00	2209.00	2160.00	2184.00	2208.00	2209.00	2160.00
<b>Train 2</b>								
Planned unavailable hours	4.95	2.48	1.92	0	61.25	41.73	0	0
Unplanned unavailable hours	0	6.12	0	0	20.90	0	0	0
Fault exposure hours	0	0	0	0	85.35	0	0	0
Effective Reset hours	0	0	0	0	0	0	0	0
Required hours	2184.00	2208.00	2209.00	2160.00	2184.00	2208.00	2209.00	2160.00
Indicator value	1.6%	1.5%	1.5%	1.5%	1.7%	1.8%	1.5%	1.4%

Licensee Comments: none

### Safety System Unavailability, High Pressure Injection System (HPSI)



Thresholds: White > 1.5% Yellow > 5.0% Red > 10.0%

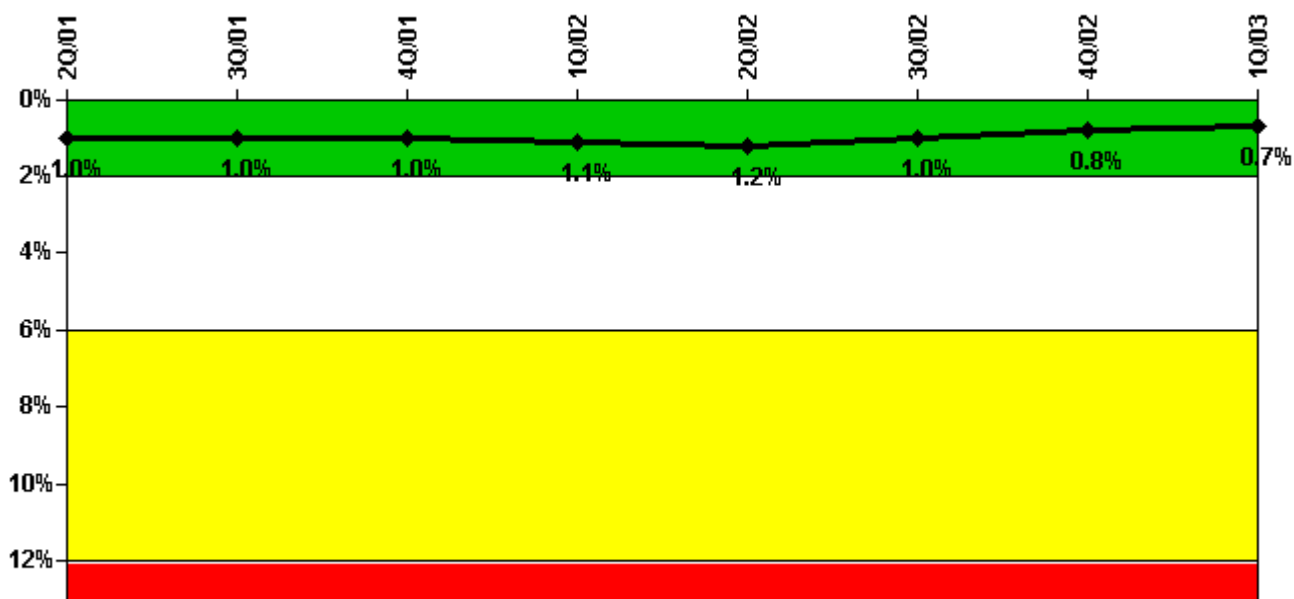
Notes

Safety System Unavailability, High Pressure Injection System (HPSI)	2Q/01	3Q/01	4Q/01	1Q/02	2Q/02	3Q/02	4Q/02	1Q/03
<b>Train 1</b>								
Planned unavailable hours	1.65	7.16	1.20	3.60	2.10	0	11.10	0
Unplanned unavailable hours	0	0	0	0	0.80	0	1.80	0
Fault exposure hours	0	0	0	0	0	0	0	0
Effective Reset hours	0	0	0	0	0	0	0	0
Required hours	2184.00	2208.00	2209.00	2160.00	1695.00	2208.00	2209.00	2129.00
<b>Train 2</b>								
Planned unavailable hours	6.70	25.55	2.38	5.60	13.20	3.30	8.60	0
Unplanned unavailable hours	0	0	0	0	0	0	1.30	3.80
Fault exposure hours	0	0	0	0	0	0	0	0
Effective Reset hours	0	0	0	0	0	0	0	0
Required hours	2184.00	2208.00	2209.00	2160.00	1695.00	2208.00	2209.00	2129.00
<b>Train 3</b>								
Planned unavailable hours	1.35	0.38	0	2.70	0	0	5.40	0
Unplanned unavailable hours	0	0	0	0	0.80	0	1.80	0
Fault exposure hours	0	0	0	0	0	0	0	0
Effective Reset hours	0	0	0	0	0	0	0	0
Required hours	2184.00	2208.00	2209.00	2160.00	1695.00	2208.00	2209.00	2129.00
<b>Train 4</b>								
Planned unavailable hours	0	0	10.08	3.50	13.20	0	5.10	0
Unplanned unavailable hours	0	0	0	0	0	0	1.30	3.80
Fault exposure hours	0	0	0	0	0	0	0	0
Effective Reset hours	0	0	0	0	0	0	0	0

Required hours	2184.00	2208.00	2209.00	2160.00	1695.00	2208.00	2209.00	2129.00
Indicator value	0.4%	0.4%	0.4%	0.4%	0.3%	0.2%	0.2%	0.2%

Licensee Comments: none

### Safety System Unavailability, Heat Removal System (AFW)



Thresholds: White > 2.0% Yellow > 6.0% Red > 12.0%

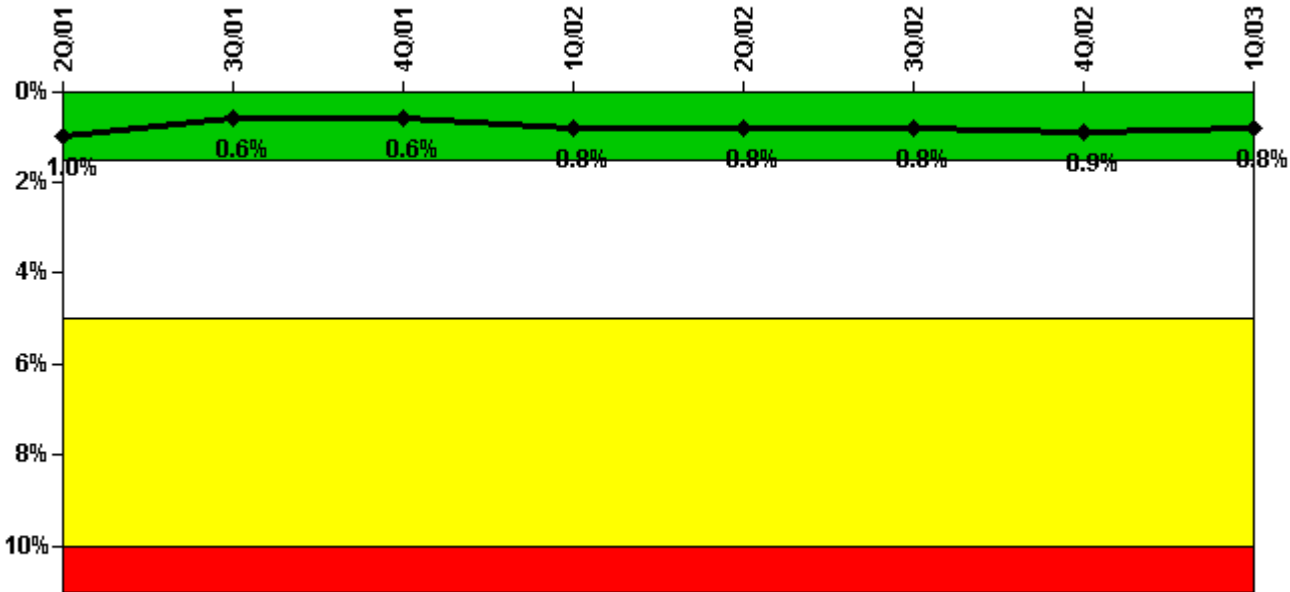
### Notes

Safety System Unavailability, Heat Removal System (AFW)	2Q/01	3Q/01	4Q/01	1Q/02	2Q/02	3Q/02	4Q/02	1Q/03
<b>Train 1</b>								
Planned unavailable hours	19.32	2.51	1.90	30.90	15.47	28.32	3.71	4.12
Unplanned unavailable hours	0	0	0	0	0.75	0	1.77	0
Fault exposure hours	0	0	0	0	0	0	0	0
Effective Reset hours	0	0	0	0	0	0	0	0
Required hours	2184.00	2208.00	2209.00	2160.00	1751.45	2208.00	2209.00	2160.00
<b>Train 2</b>								
Planned unavailable hours	10.33	1.97	5.20	38.22	17.11	6.80	2.20	0.50
Unplanned unavailable hours	0	0	0	0	0	0	1.26	3.80
Fault exposure hours	0	0	0	0	0	0	0	0
Effective Reset hours	0	0	0	0	0	0	0	0
Required hours	2184.00	2208.00	2209.00	2160.00	1751.45	2208.00	2209.00	2160.00
<b>Train 3</b>								

Planned unavailable hours	9.10	9.48	18.94	21.32	3.52	26.78	12.10	31.09
Unplanned unavailable hours	0	0	23.52	0	0	0	0	0
Fault exposure hours	0	0	0	0	0	0	0	0
Effective Reset hours	0	0	0	0	0	0	0	0
Required hours	2184.00	2208.00	2209.00	2160.00	1751.45	2208.00	2209.00	2160.00
Indicator value	1.0%	1.0%	1.0%	1.1%	1.2%	1.0%	0.8%	0.7%

Licensee Comments: none

### Safety System Unavailability, Residual Heat Removal System



Thresholds: White > 1.5% Yellow > 5.0% Red > 10.0%

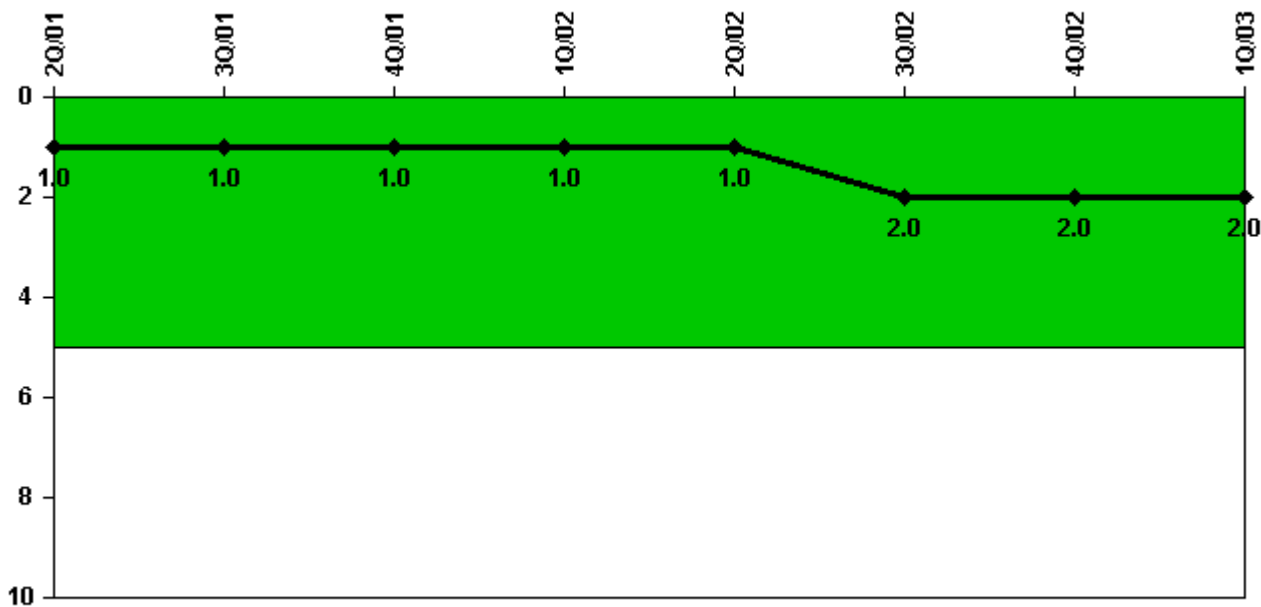
### Notes

Safety System Unavailability, Residual Heat Removal System	2Q/01	3Q/01	4Q/01	1Q/02	2Q/02	3Q/02	4Q/02	1Q/03
<b>Train 1</b>								
Planned unavailable hours	25.75	0.38	0	94.20	0	0	21.60	0
Unplanned unavailable hours	0	0	0	0	27.10	0	30.60	0
Fault exposure hours	0	0	0	0	0	0	0	0
Effective Reset hours	0	0	0	0	0	0	0	0
Required hours	2184.00	2208.00	2209.00	2160.00	2183.00	2208.00	2209.00	2160.00
<b>Train 2</b>								
Planned unavailable hours	0	0.20	25.17	80.20	21.80	0	0	0
Unplanned unavailable hours	0	8.53	0	0	0	0	27.50	11.80

Fault exposure hours	0	0	0	0	0	0	0	0
Effective Reset hours	0	0	0	0	0	0	0	0
Required hours	2184.00	2208.00	2209.00	2160.00	2183.00	2208.00	2209.00	2160.00
Indicator value	1.0%	0.6%	0.6%	0.8%	0.8%	0.8%	0.9%	0.8%

Licensee Comments: none

### Safety System Functional Failures (PWR)



Thresholds: White > 5.0

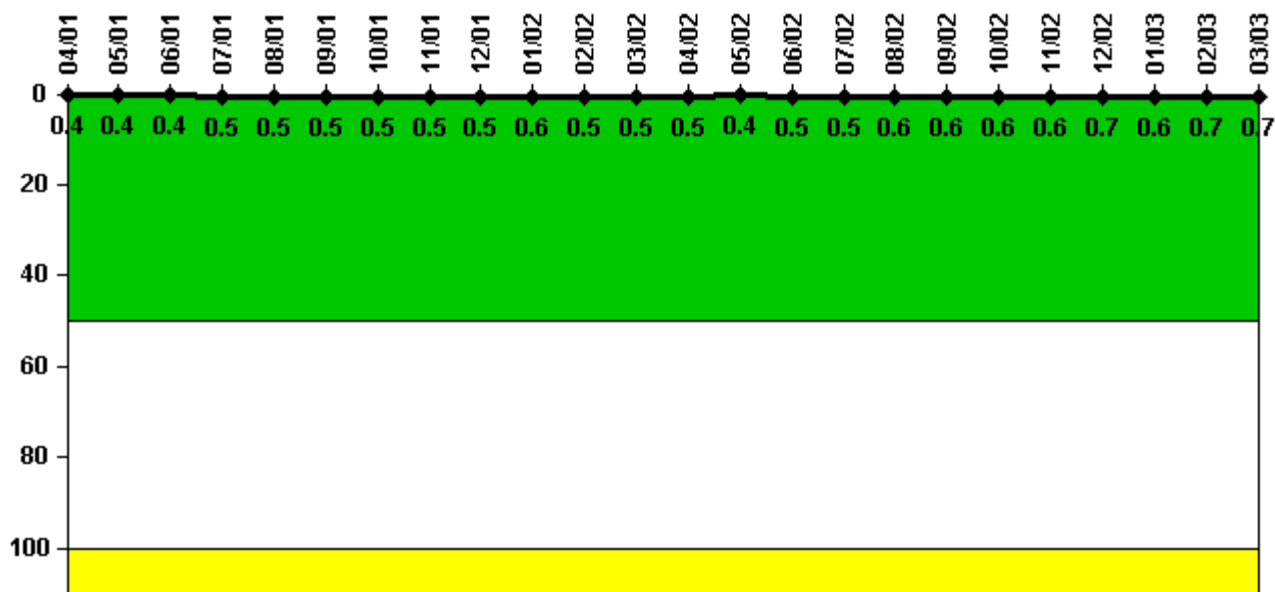
### Notes

Safety System Functional Failures (PWR)	2Q/01	3Q/01	4Q/01	1Q/02	2Q/02	3Q/02	4Q/02	1Q/03
Safety System Functional Failures	1	0	0	0	1	1	0	0
Indicator value	1	1	1	1	1	2	2	2

Licensee Comments: none



### Reactor Coolant System Activity



Thresholds: White > 50.0 Yellow > 100.0

#### Notes

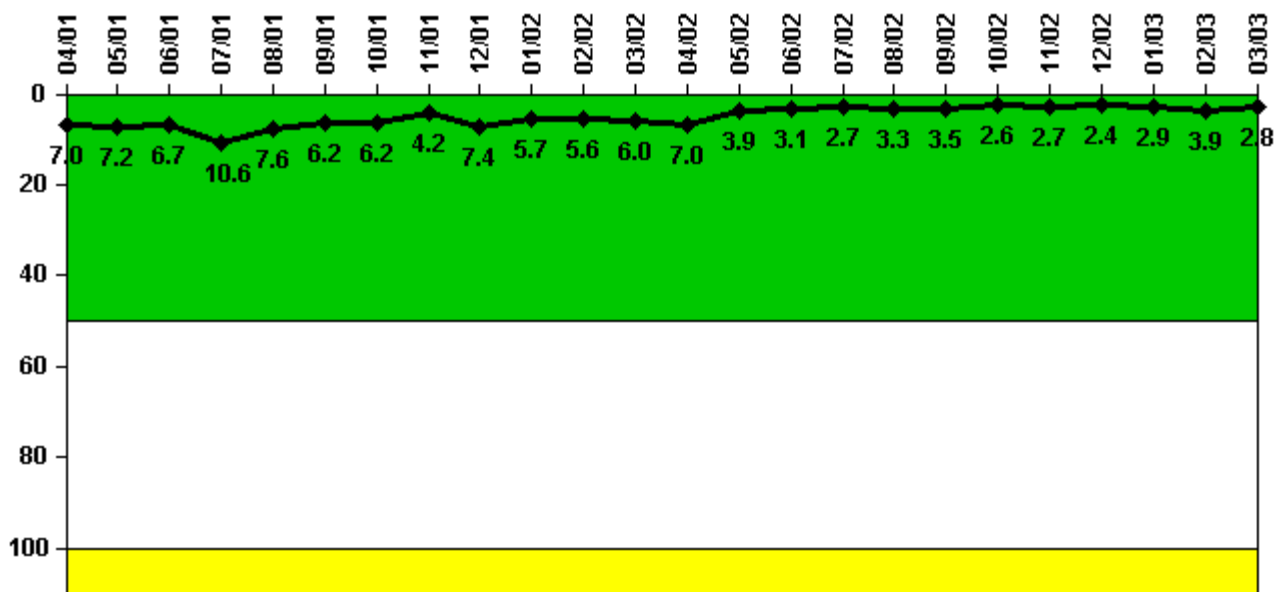
Reactor Coolant System Activity	4/01	5/01	6/01	7/01	8/01	9/01	10/01	11/01	12/01	1/02	2/02	3/02
Maximum activity	0.000245	0.000257	0.000258	0.000300	0.000300	0.000300	0.000311	0.000318	0.000336	0.000389	0.000337	0.000335
Technical specification limit	0.1	0.1	0.1	0.1	0.1	0.1	0.1	0.1	0.1	0.1	0.1	0.1
Indicator value	0.4	0.4	0.4	0.5	0.5	0.5	0.5	0.5	0.5	0.6	0.5	0.5

Reactor Coolant System Activity	4/02	5/02	6/02	7/02	8/02	9/02	10/02	11/02	12/02	1/03	2/03	3/03
Maximum activity	0.000328	0.000241	0.000297	0.000320	0.000360	0.000380	0.000370	0.000410	0.000430	0.000410	0.000440	0.000445
Technical specification limit	0.1	0.1	0.1	0.1	0.1	0.1	0.1	0.1	0.1	0.1	0.1	0.1
Indicator value	0.5	0.4	0.5	0.5	0.6	0.6	0.6	0.6	0.7	0.6	0.7	0.7

Licensee Comments: none

### Reactor Coolant System Leakage



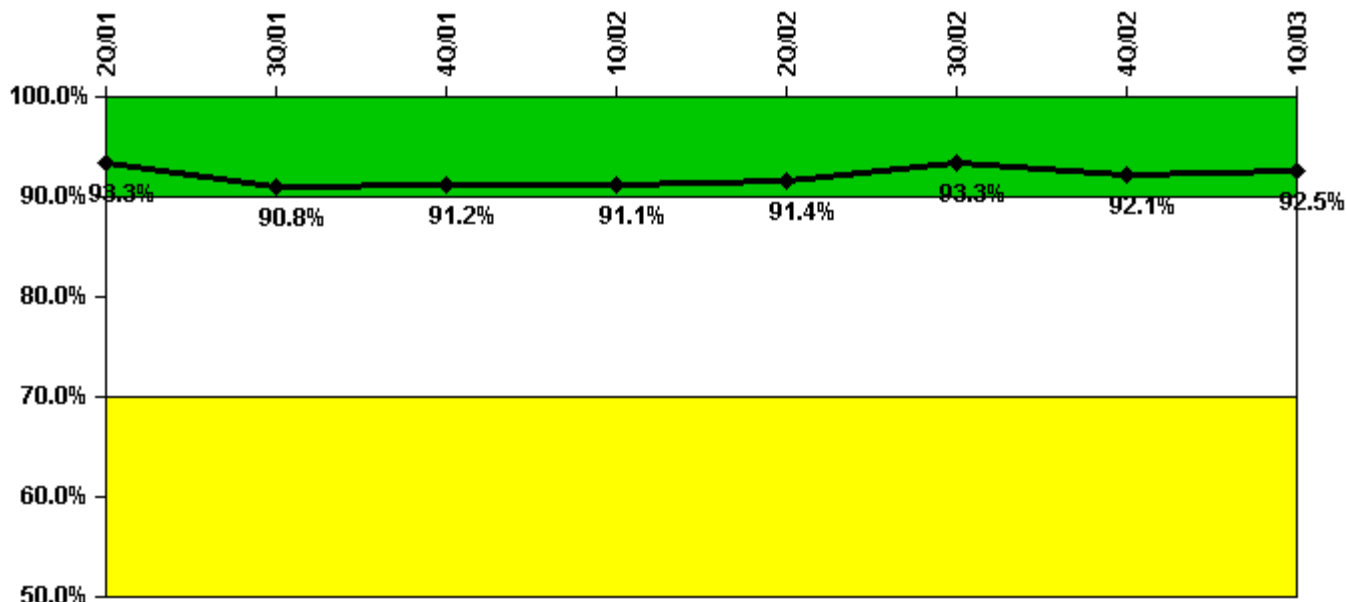
Thresholds: White > 50.0 Yellow > 100.0

#### Notes

Reactor Coolant System Leakage	4/01	5/01	6/01	7/01	8/01	9/01	10/01	11/01	12/01	1/02	2/02	3/02
Maximum leakage	0.699	0.716	0.669	1.063	0.761	0.624	0.616	0.417	0.742	0.569	0.563	0.598
Technical specification limit	10.0	10.0	10.0	10.0	10.0	10.0	10.0	10.0	10.0	10.0	10.0	10.0
Indicator value	7.0	7.2	6.7	10.6	7.6	6.2	6.2	4.2	7.4	5.7	5.6	6.0
Reactor Coolant System Leakage	4/02	5/02	6/02	7/02	8/02	9/02	10/02	11/02	12/02	1/03	2/03	3/03
Maximum leakage	0.698	0.385	0.310	0.270	0.330	0.350	0.256	0.274	0.240	0.290	0.389	0.284
Technical specification limit	10.0	10.0	10.0	10.0	10.0	10.0	10.0	10.0	10.0	10.0	10.0	10.0
Indicator value	7.0	3.9	3.1	2.7	3.3	3.5	2.6	2.7	2.4	2.9	3.9	2.8

Licensee Comments: none

### Drill/Exercise Performance



Thresholds: White < 90.0% Yellow < 70.0%

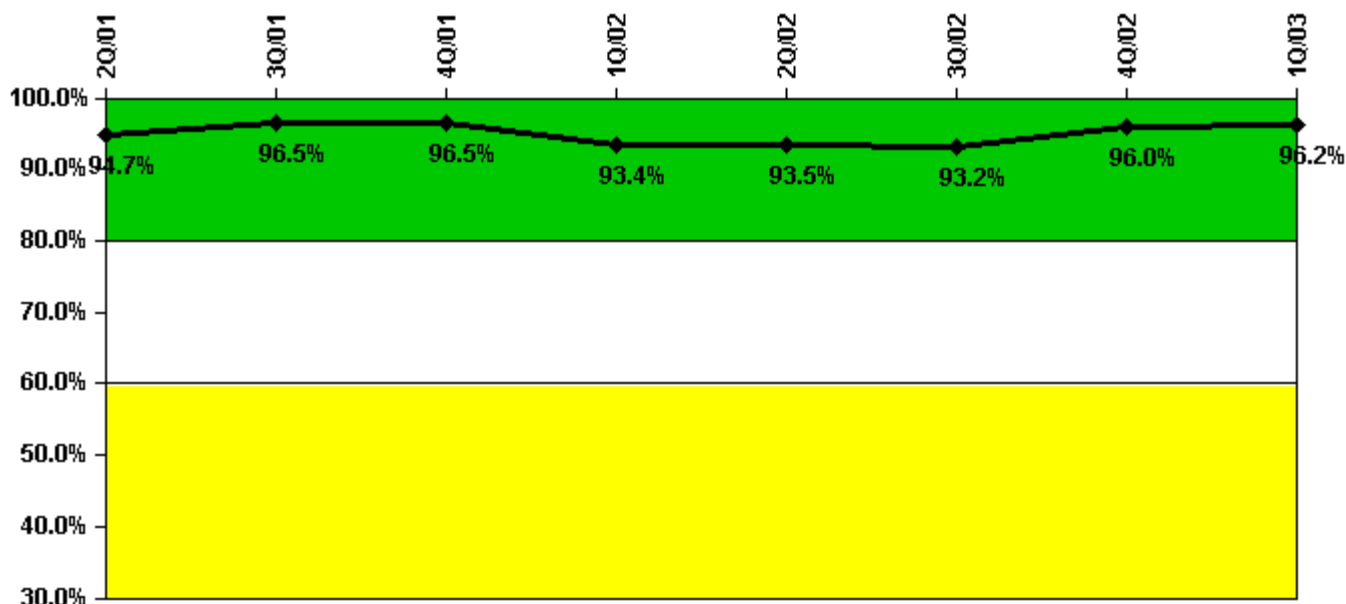
#### Notes

Drill/Exercise Performance	2Q/01	3Q/01	4Q/01	1Q/02	2Q/02	3Q/02	4Q/02	1Q/03
Successful opportunities	7.0	111.0	12.0	16.0	8.0	71.0	40.0	18.0
Total opportunities	7.0	125.0	12.0	16.0	8.0	74.0	46.0	18.0
Indicator value	93.3%	90.8%	91.2%	91.1%	91.4%	93.3%	92.1%	92.5%

Licensee Comments:

1Q/03:

### ERO Drill Participation



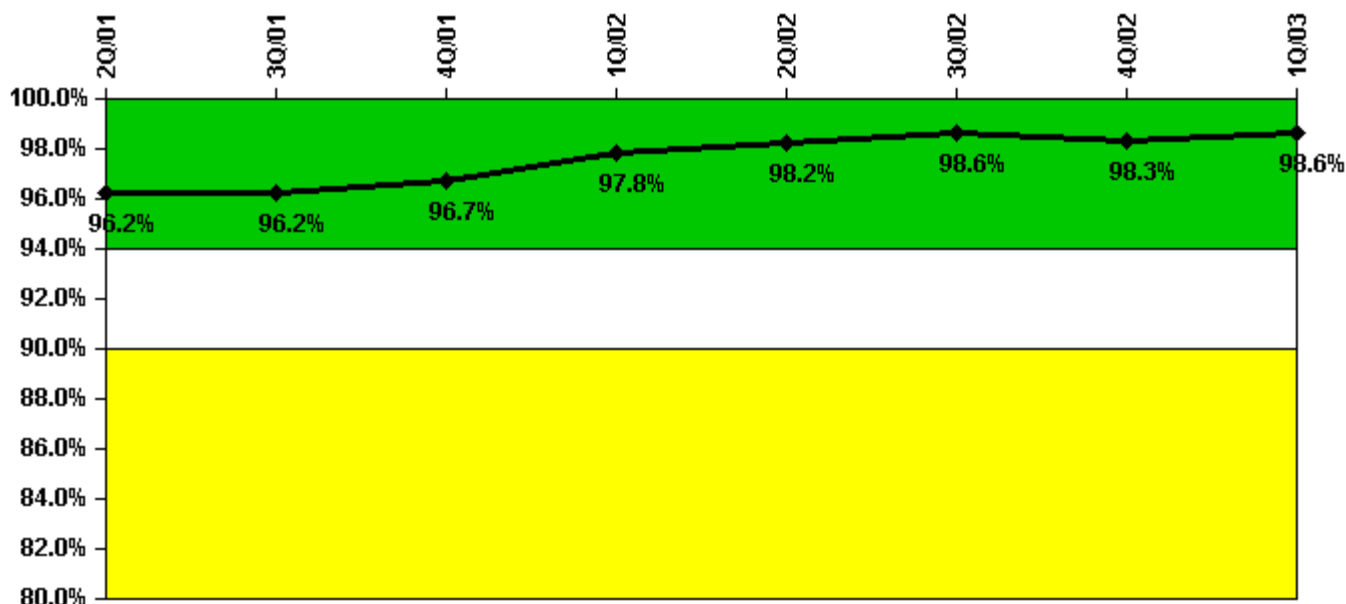
Thresholds: White < 80.0% Yellow < 60.0%

#### Notes

ERO Drill Participation	2Q/01	3Q/01	4Q/01	1Q/02	2Q/02	3Q/02	4Q/02	1Q/03
Participating Key personnel	178.0	192.0	191.0	184.0	186.0	177.0	192.0	177.0
Total Key personnel	188.0	199.0	198.0	197.0	199.0	190.0	200.0	184.0
Indicator value	94.7%	96.5%	96.5%	93.4%	93.5%	93.2%	96.0%	96.2%

Licensee Comments: none

### Alert & Notification System



Thresholds: White < 94.0% Yellow < 90.0%

#### Notes

Alert & Notification System	2Q/01	3Q/01	4Q/01	1Q/02	2Q/02	3Q/02	4Q/02	1Q/03
Successful siren-tests	2293	2208	2162	2337	2253	2251	2248	2220
Total sirens-tests	2363	2275	2186	2375	2288	2281	2302	2225
Indicator value	96.2%	96.2%	96.7%	97.8%	98.2%	98.6%	98.3%	98.6%

Licensee Comments: none

### Occupational Exposure Control Effectiveness



Thresholds: White > 2.0 Yellow > 5.0

**Notes**

Occupational Exposure Control Effectiveness	2Q/01	3Q/01	4Q/01	1Q/02	2Q/02	3Q/02	4Q/02	1Q/03
High radiation area occurrences	0	0	0	0	0	0	0	0
Very high radiation area occurrences	0	0	0	0	0	0	0	0
Unintended exposure occurrences	0	0	0	0	0	0	0	0
Indicator value	0	0	0	0	0	0	0	0

Licensee Comments: none

### RETS/ODCM Radiological Effluent



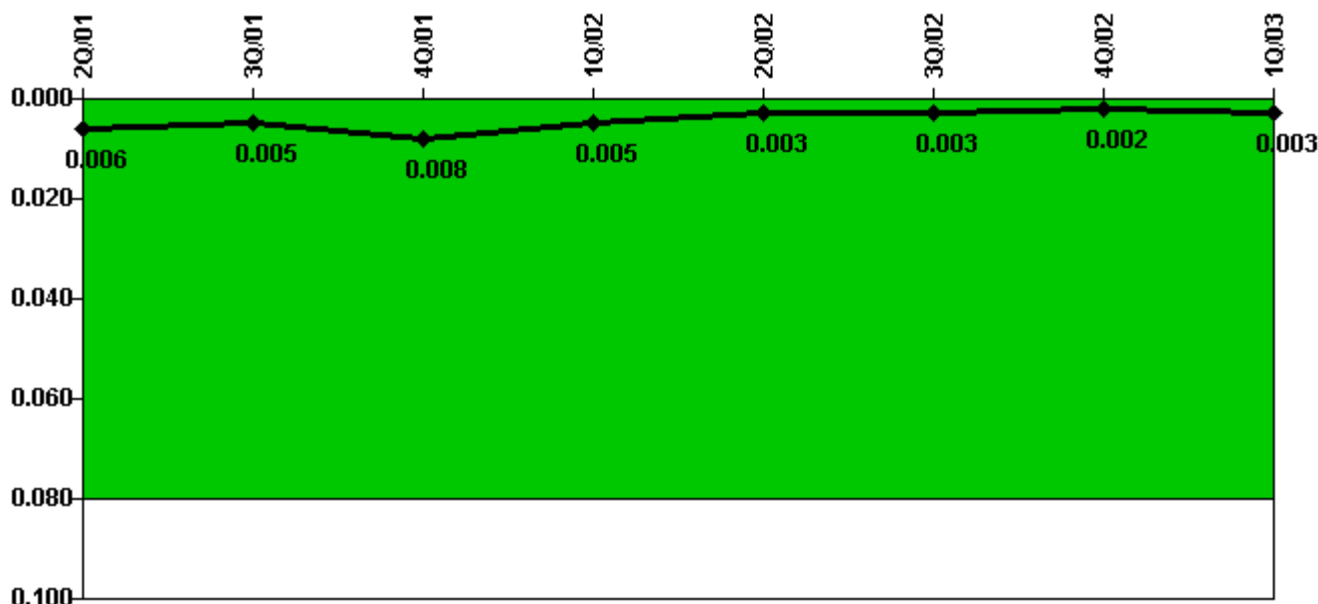
Thresholds: White > 1.0 Yellow > 3.0

#### Notes

RETS/ODCM Radiological Effluent	2Q/01	3Q/01	4Q/01	1Q/02	2Q/02	3Q/02	4Q/02	1Q/03
RETS/ODCM occurrences	0	0	0	0	0	0	0	0
Indicator value	0	0	0	0	0	0	0	0

Licensee Comments: none

### Protected Area Security Performance Index



Thresholds: White > 0.080

#### Notes

Protected Area Security Performance Index	2Q/01	3Q/01	4Q/01	1Q/02	2Q/02	3Q/02	4Q/02	1Q/03
IDS compensatory hours	58.10	12.10	93.50	20.00	5.10	2.10	62.30	29.00
CCTV compensatory hours	3.8	0	2.5	0	0	0	0	3.6
IDS normalization factor	2.45	2.45	2.45	2.45	2.45	2.45	2.45	2.45
CCTV normalization factor	1.0	1.0	1.0	1.0	1.0	1.0	1.0	1.0
Index Value	0.006	0.005	0.008	0.005	0.003	0.003	0.002	0.003

Licensee Comments: none



### Personnel Screening Program



Thresholds: White > 2.0 Yellow > 5.0

#### Notes

Personnel Screening Program	2Q/01	3Q/01	4Q/01	1Q/02	2Q/02	3Q/02	4Q/02	1Q/03
Program failures	0	0	0	0	0	0	0	0
Indicator value	0	0	0	0	0	0	0	0

Licensee Comments: none

### FFD/Personnel Reliability



Thresholds: White > 2.0 Yellow > 5.0

#### Notes

FFD/Personnel Reliability	2Q/01	3Q/01	4Q/01	1Q/02	2Q/02	3Q/02	4Q/02	1Q/03
Program Failures	0	0	0	0	0	0	0	0
Indicator value	0	0	0	0	0	0	0	0

Licensee Comments: none

▲ [PI Summary](#) | [Inspection Findings Summary](#) | [Reactor Oversight Process](#)

Last Modified: April 22, 2003