

# Calvert Cliffs 2

## 1Q/2003 Performance Indicators

Licensee's General Comments: none

### Unplanned Scrams per 7000 Critical Hrs



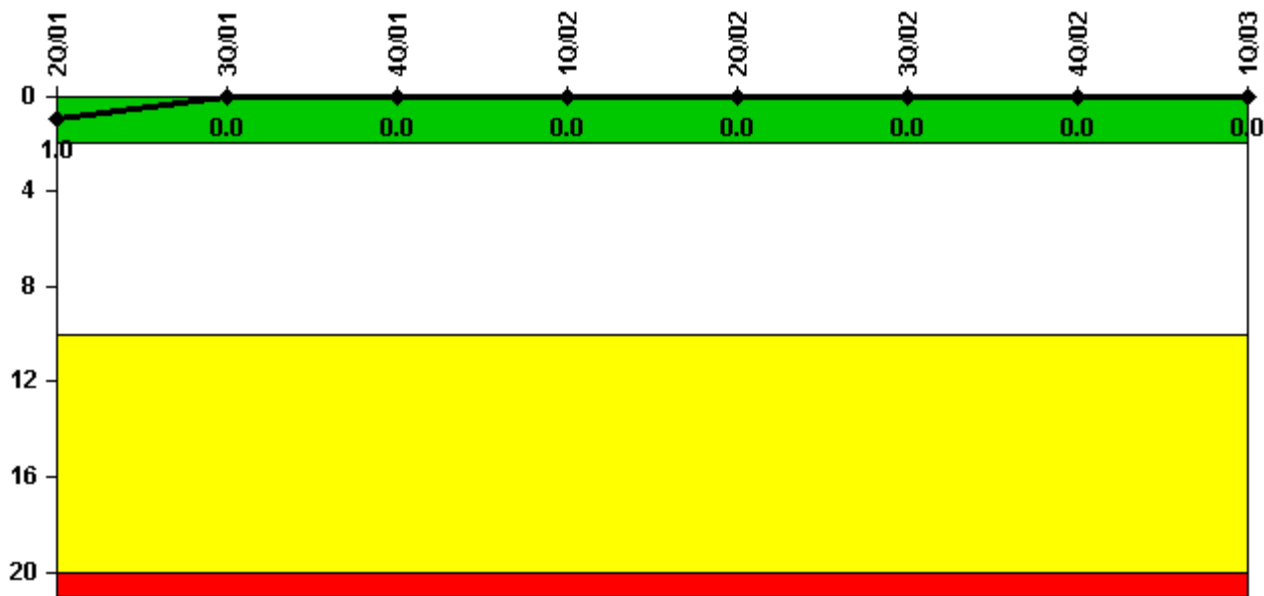
Thresholds: White > 3.0 Yellow > 6.0 Red > 25.0

### Notes

Unplanned Scrams per 7000 Critical Hrs	2Q/01	3Q/01	4Q/01	1Q/02	2Q/02	3Q/02	4Q/02	1Q/03
Unplanned scrams	0	0	0	0	0	0	0	0
Critical hours	1163.4	2208.0	2162.9	2160.0	2183.0	2208.0	2209.0	1079.4
Indicator value	0	0	0	0	0	0	0	0

Licensee Comments: none

### Scrams with Loss of Normal Heat Removal



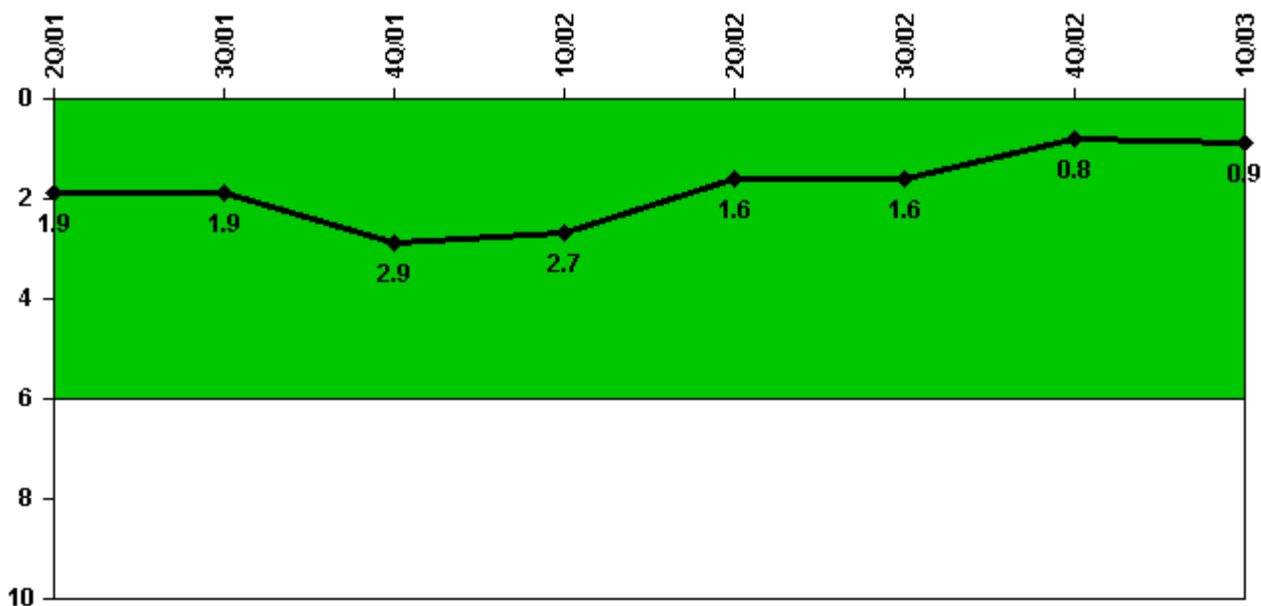
Thresholds: White > 2.0 Yellow > 10.0 Red > 20.0

#### Notes

Scrams with Loss of Normal Heat Removal	2Q/01	3Q/01	4Q/01	1Q/02	2Q/02	3Q/02	4Q/02	1Q/03
Scrams	0	0	0	0	0	0	0	0
Indicator value	1.0	0	0	0	0	0	0	0

Licensee Comments: none

### Unplanned Power Changes per 7000 Critical Hrs



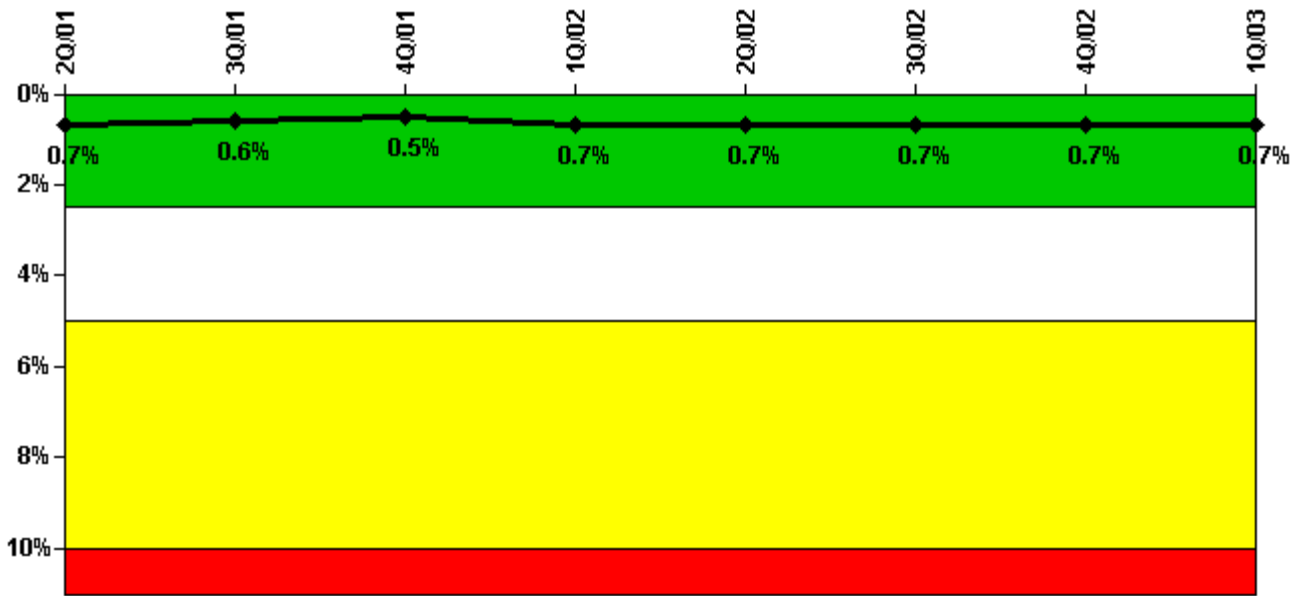
Thresholds: White > 6.0

#### Notes

Unplanned Power Changes per 7000 Critical Hrs	2Q/01	3Q/01	4Q/01	1Q/02	2Q/02	3Q/02	4Q/02	1Q/03
Unplanned power changes	2.0	0	1.0	0	1.0	0	0	0
Critical hours	1163.4	2208.0	2162.9	2160.0	2183.0	2208.0	2209.0	1079.4
Indicator value	1.9	1.9	2.9	2.7	1.6	1.6	0.8	0.9

Licensee Comments: none

### Safety System Unavailability, Emergency AC Power



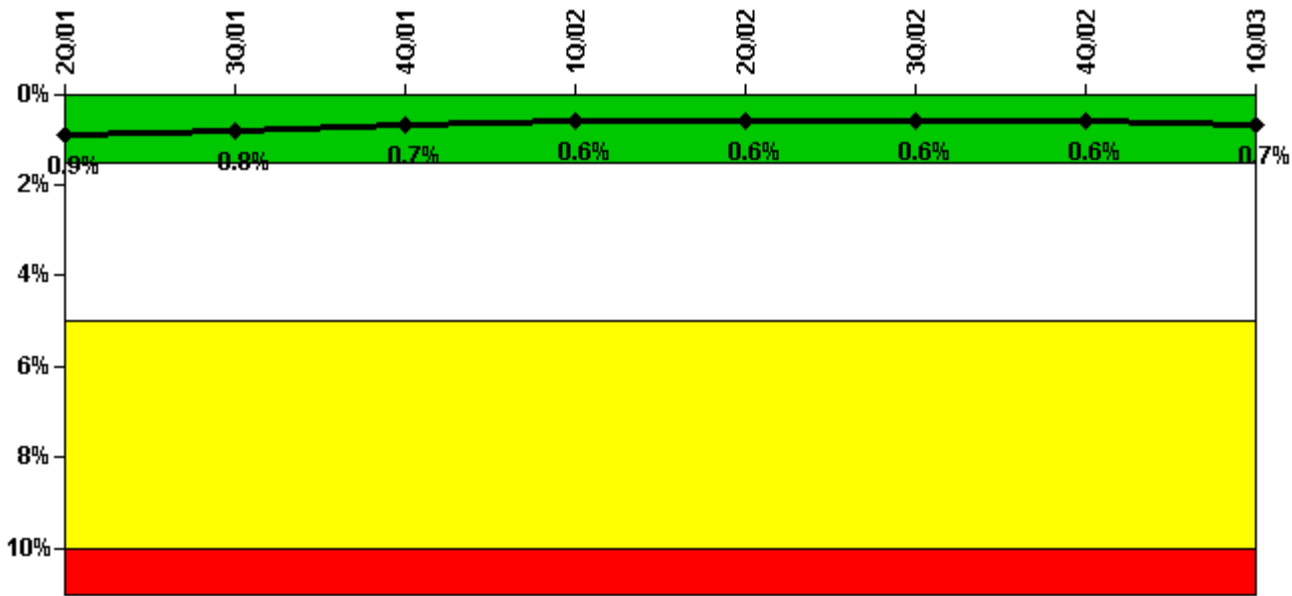
Thresholds: White > 2.5% Yellow > 5.0% Red > 10.0%

#### Notes

Safety System Unavailability, Emergency AC Power	2Q/01	3Q/01	4Q/01	1Q/02	2Q/02	3Q/02	4Q/02	1Q/03
<b>Train 1</b>								
Planned unavailable hours	0.83	34.50	0.50	1.33	13.50	0	0	20.18
Unplanned unavailable hours	0	17.27	9.27	143.98	0	0	0	0
Fault exposure hours	0	0	0	0	0	0	0	0
Effective Reset hours	0	0	0	0	0	0	0	0
Required hours	2183.00	2208.00	2209.00	2160.00	2183.00	2208.00	2209.00	2160.00
<b>Train 2</b>								
Planned unavailable hours	0	0	0.25	0	2.70	13.27	6.30	34.39
Unplanned unavailable hours	0	0	0	12.25	0	0	0	0
Fault exposure hours	0	0	0	0	0	0	0	0
Effective Reset hours	0	0	0	0	0	0	0	0
Required hours	2183.00	2208.00	2209.00	2160.00	2183.00	2208.00	2209.00	2160.00
Indicator value	0.7%	0.6%	0.5%	0.7%	0.7%	0.7%	0.7%	0.7%

Licensee Comments: none

### Safety System Unavailability, High Pressure Injection System (HPSI)



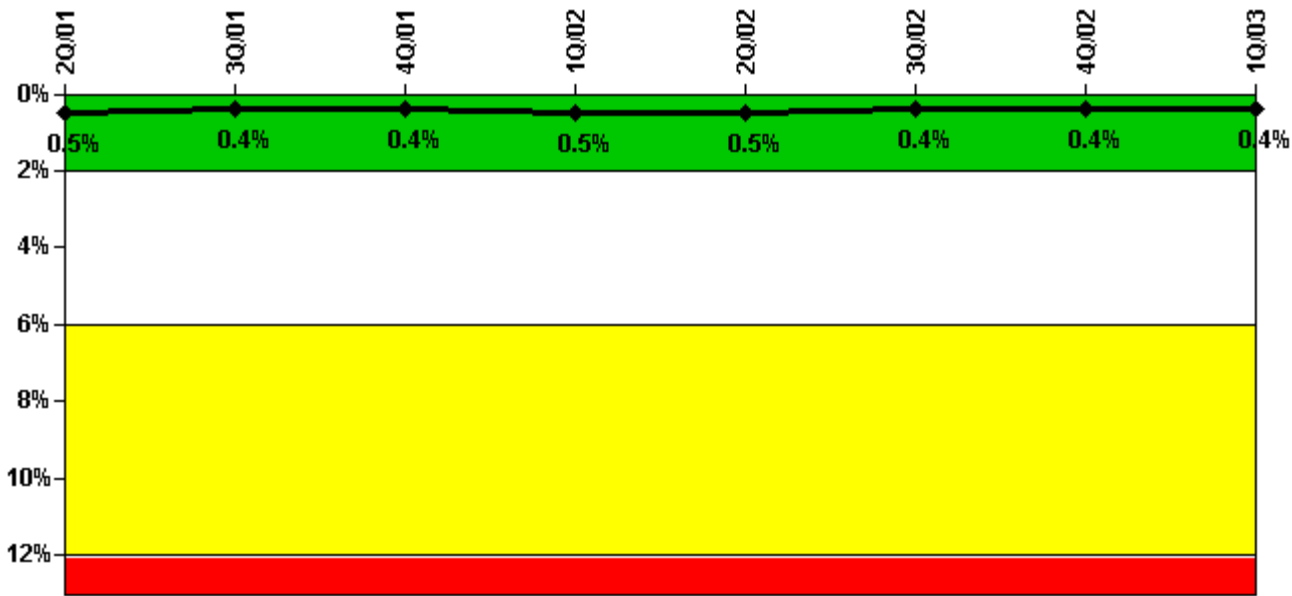
Thresholds: White > 1.5% Yellow > 5.0% Red > 10.0%

**Notes**

Safety System Unavailability, High Pressure Injection System (HPSI)	2Q/01	3Q/01	4Q/01	1Q/02	2Q/02	3Q/02	4Q/02	1Q/03
<b>Train 1</b>								
Planned unavailable hours	1.54	0.27	9.94	20.17	0.30	2.42	25.99	18.68
Unplanned unavailable hours	0	0	9.27	0	11.70	0	0.77	0
Fault exposure hours	0	0	0	0	0	0	0	0
Effective Reset hours	0	0	0	0	0	0	0	0
Required hours	1163.30	2208.00	2162.90	2160.00	2183.00	2208.00	2209.00	1079.40
<b>Train 2</b>								
Planned unavailable hours	1.54	17.47	0.54	17.45	0.30	34.49	1.23	33.78
Unplanned unavailable hours	0	0	0.47	0	0	0	0	3.40
Fault exposure hours	0	0	0	0	0	0	0	0
Effective Reset hours	0	0	0	0	0	0	0	0
Required hours	1163.30	2208.00	2162.90	2160.00	2183.00	2208.00	2209.00	1079.40
Indicator value	0.9%	0.8%	0.7%	0.6%	0.6%	0.6%	0.6%	0.7%

Licensee Comments: none

### Safety System Unavailability, Heat Removal System (AFW)



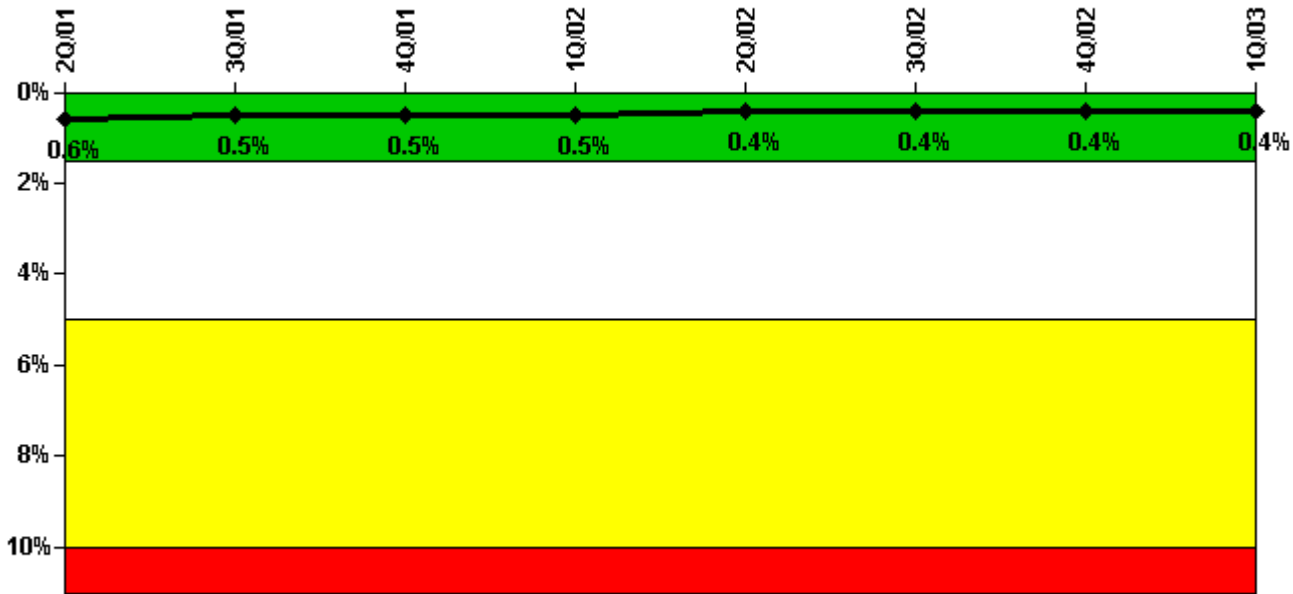
Thresholds: White > 2.0% Yellow > 6.0% Red > 12.0%

**Notes**

Safety System Unavailability, Heat Removal System (AFW)	2Q/01	3Q/01	4Q/01	1Q/02	2Q/02	3Q/02	4Q/02	1Q/03
<b>Train 1</b>								
Planned unavailable hours	18.04	8.91	0.08	22.42	2.20	0	0.40	0
Unplanned unavailable hours	0	6.58	0	0	0	0	0.37	0
Fault exposure hours	0	0	0	0	0	0	0	0
Effective Reset hours	0	0	0	0	0	0	0	0
Required hours	1163.30	2208.00	2162.90	2160.00	2183.00	2208.00	2209.00	1079.40
<b>Train 2</b>								
Planned unavailable hours	22.28	13.67	0.17	22.42	2.70	0.47	1.07	0
Unplanned unavailable hours	0	6.58	0	0	0	0	0.90	0
Fault exposure hours	0	0	0	0	0	0	0	0
Effective Reset hours	0	0	0	0	0	0	0	0
Required hours	1163.30	2208.00	2162.90	2160.00	2183.00	2208.00	2209.00	1079.40
<b>Train 3</b>								
Planned unavailable hours	31.95	38.92	13.07	0	4.60	0	0	0.52
Unplanned unavailable hours	0	0.58	0	0	0	23.38	0	0
Fault exposure hours	0	0	0	0	0	0	0	0
Effective Reset hours	0	0	0	0	0	0	0	0
Required hours	1163.30	2208.00	2162.90	2160.00	2183.00	2208.00	2209.00	1079.40
<b>Indicator value</b>	<b>0.5%</b>	<b>0.4%</b>	<b>0.4%</b>	<b>0.5%</b>	<b>0.5%</b>	<b>0.4%</b>	<b>0.4%</b>	<b>0.4%</b>

Licensee Comments: none

### Safety System Unavailability, Residual Heat Removal System



Thresholds: White > 1.5% Yellow > 5.0% Red > 10.0%

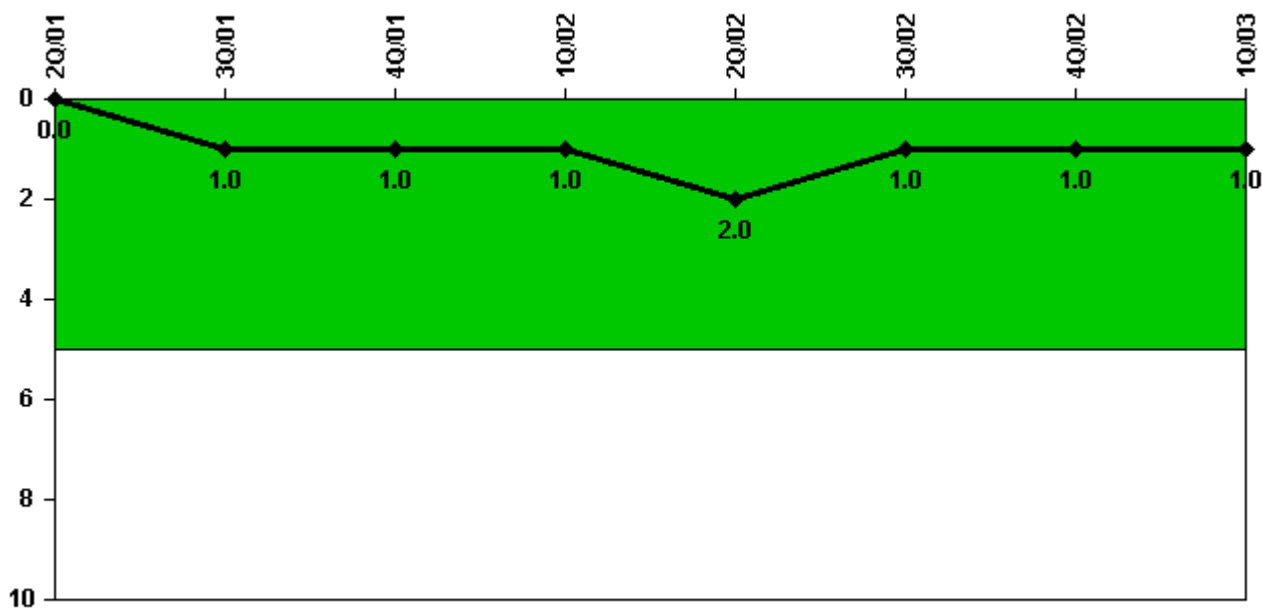
#### Notes

Safety System Unavailability, Residual Heat Removal System	20/01	30/01	40/01	10/02	20/02	30/02	40/02	10/03
<b>Train 1</b>								
Planned unavailable hours	0	0	0	0	0	0	0	0
Unplanned unavailable hours	0	0	0	0	0	0	0	0
Fault exposure hours	0	0	0	0	0	0	0	0
Effective Reset hours	0	0	0	0	0	0	0	0
Required hours	935.40	0	19.30	0	0	0	0	304.50
<b>Train 2</b>								
Planned unavailable hours	0	0	0	0	0	0	0	0
Unplanned unavailable hours	0	0	0	0	0	0	0	0
Fault exposure hours	0	0	0	0	0	0	0	0
Effective Reset hours	0	0	0	0	0	0	0	0
Required hours	935.40	0	19.30	0	0	0	0	304.50
<b>Train 3</b>								
Planned unavailable hours	4.24	2.62	25.68	21.59	18.10	2.49	3.66	18.24
Unplanned unavailable hours	0	0	9.27	0	11.70	1.92	0	0
Fault exposure hours	0	0	0	0	0	0	0	0
Effective Reset hours	0	0	0	0	0	0	0	0
Required hours	1247.60	2208.00	2189.70	2160.00	2183.00	2208.00	2209.00	1090.30
<b>Train 4</b>								
Planned unavailable hours	4.52	22.54	1.91	18.47	6.40	42.50	3.06	33.74

Unplanned unavailable hours	0	0	0	0	0	3.15	0	3.40
Fault exposure hours	0	0	0	0	0	0	0	0
Effective Reset hours	0	0	0	0	0	0	0	0
Required hours	1247.60	2208.00	2189.70	2160.00	2183.00	2208.00	2209.00	1090.30
Indicator value	0.6%	0.5%	0.5%	0.5%	0.4%	0.4%	0.4%	0.4%

Licensee Comments: none

### Safety System Functional Failures (PWR)



Thresholds: White > 5.0

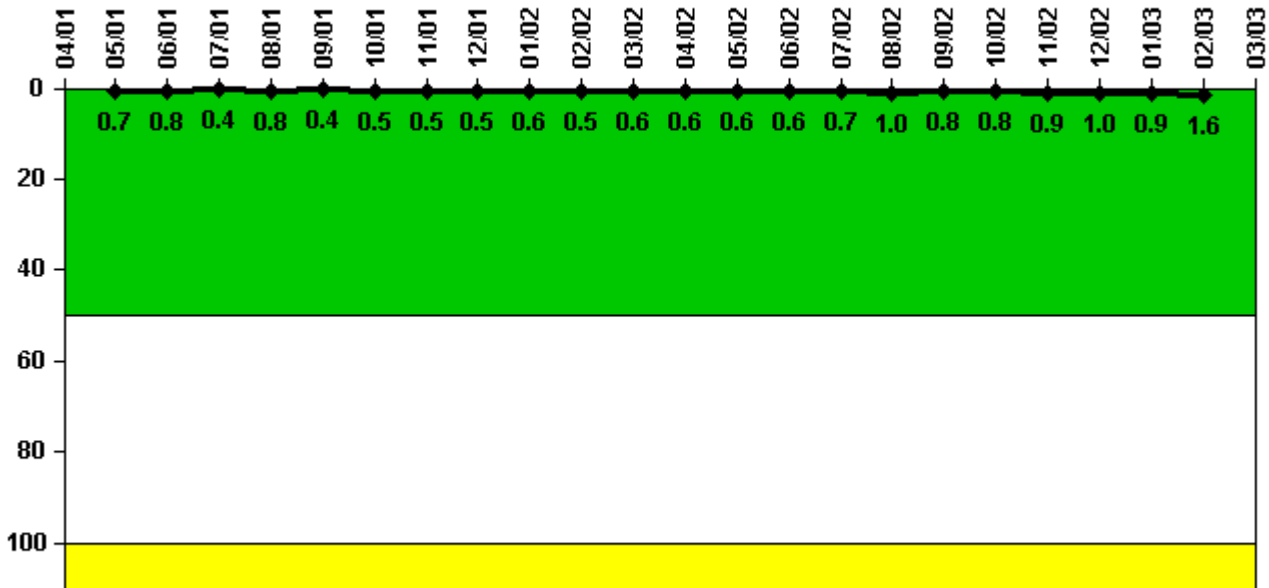
### Notes

Safety System Functional Failures (PWR)	2Q/01	3Q/01	4Q/01	1Q/02	2Q/02	3Q/02	4Q/02	1Q/03
Safety System Functional Failures	0	1	0	0	1	0	0	0
Indicator value	0	1	1	1	2	1	1	1

Licensee Comments: none



### Reactor Coolant System Activity



Thresholds: White > 50.0 Yellow > 100.0

#### Notes

Reactor Coolant System Activity	4/01	5/01	6/01	7/01	8/01	9/01	10/01	11/01	12/01	1/02	2/02	3/02
Maximum activity	N/A	0.007460	0.007800	0.003780	0.007770	0.004230	0.004620	0.004720	0.005170	0.005730	0.005470	0.005600
Technical specification limit	1.0	1.0	1.0	1.0	1.0	1.0	1.0	1.0	1.0	1.0	1.0	1.0
Indicator value	N/A	0.7	0.8	0.4	0.8	0.4	0.5	0.5	0.5	0.6	0.5	0.6

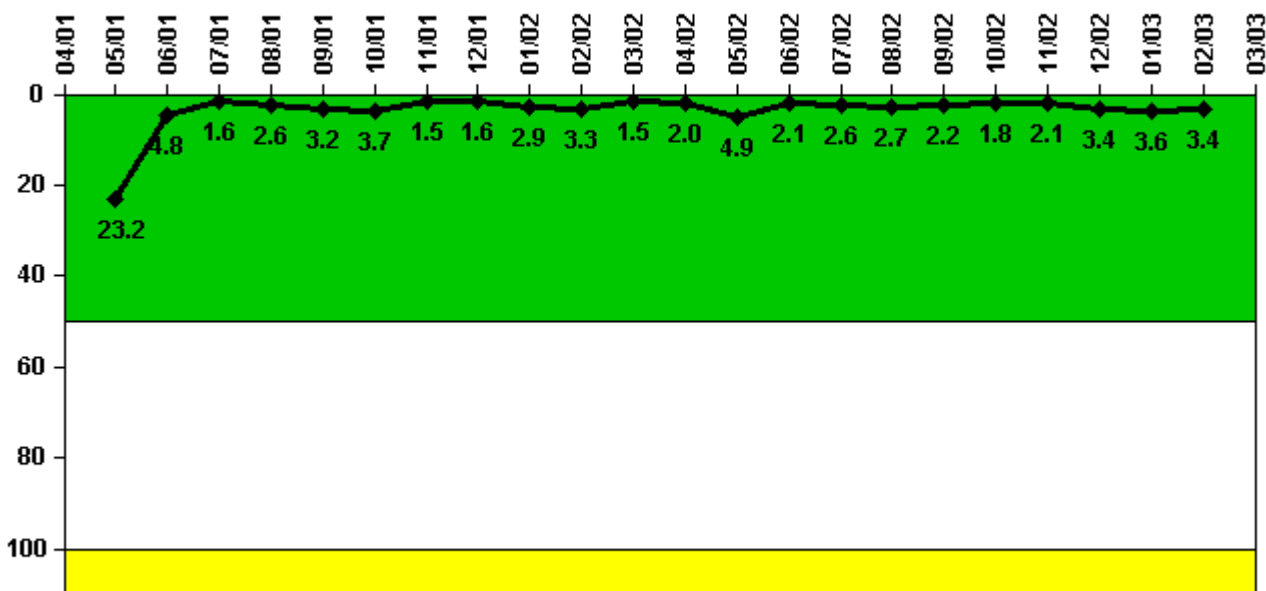
Reactor Coolant System Activity	4/02	5/02	6/02	7/02	8/02	9/02	10/02	11/02	12/02	1/03	2/03	3/03
Maximum activity	0.005600	0.006010	0.006200	0.006550	0.009630	0.007900	0.007980	0.008700	0.009630	0.008560	0.015900	N/A
Technical specification limit	1.0	1.0	1.0	1.0	1.0	1.0	1.0	1.0	1.0	1.0	1.0	1.0
Indicator value	0.6	0.6	0.6	0.7	1.0	0.8	0.8	0.9	1.0	0.9	1.6	N/A

Licensee Comments:

3/03: Refueling outage shutdown started 02/14/03. Unit 2 was in a refueling outage for the entire month of March.

3/03: Refueling outage shutdown started 02/14/03. Unit 2 was in a refueling outage for the entire month of March.

### Reactor Coolant System Leakage



Thresholds: White > 50.0 Yellow > 100.0

#### Notes

Reactor Coolant System Leakage	4/01	5/01	6/01	7/01	8/01	9/01	10/01	11/01	12/01	1/02	2/02	3/02
Maximum leakage	N/A	2.320	0.480	0.155	0.260	0.317	0.370	0.150	0.160	0.289	0.331	0.145
Technical specification limit	10.0	10.0	10.0	10.0	10.0	10.0	10.0	10.0	10.0	10.0	10.0	10.0
Indicator value	N/A	23.2	4.8	1.6	2.6	3.2	3.7	1.5	1.6	2.9	3.3	1.5

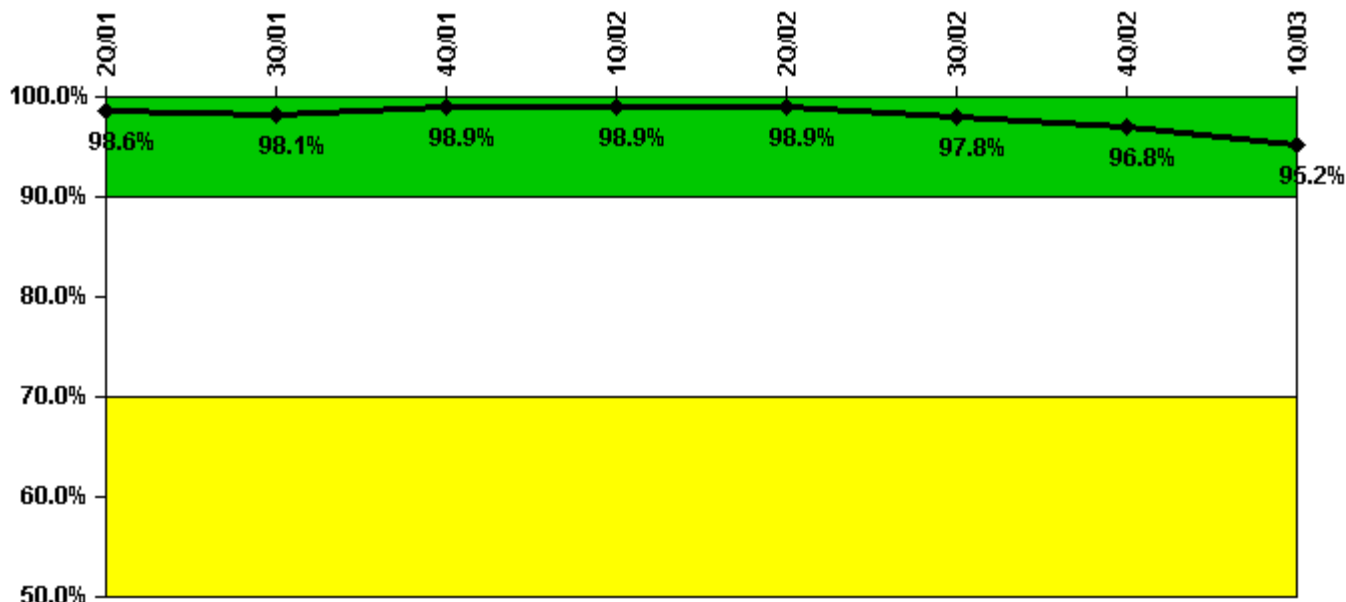
Reactor Coolant System Leakage	4/02	5/02	6/02	7/02	8/02	9/02	10/02	11/02	12/02	1/03	2/03	3/03
Maximum leakage	0.200	0.486	0.211	0.262	0.273	0.220	0.177	0.210	0.338	0.360	0.340	N/A
Technical specification limit	10.0	10.0	10.0	10.0	10.0	10.0	10.0	10.0	10.0	10.0	10.0	10.0
Indicator value	2.0	4.9	2.1	2.6	2.7	2.2	1.8	2.1	3.4	3.6	3.4	N/A

Licensee Comments:

3/03: Unit 2 shut down for refueling 02/14/03.

3/03: Unit 2 shut down for refueling 02/14/03.

### Drill/Exercise Performance



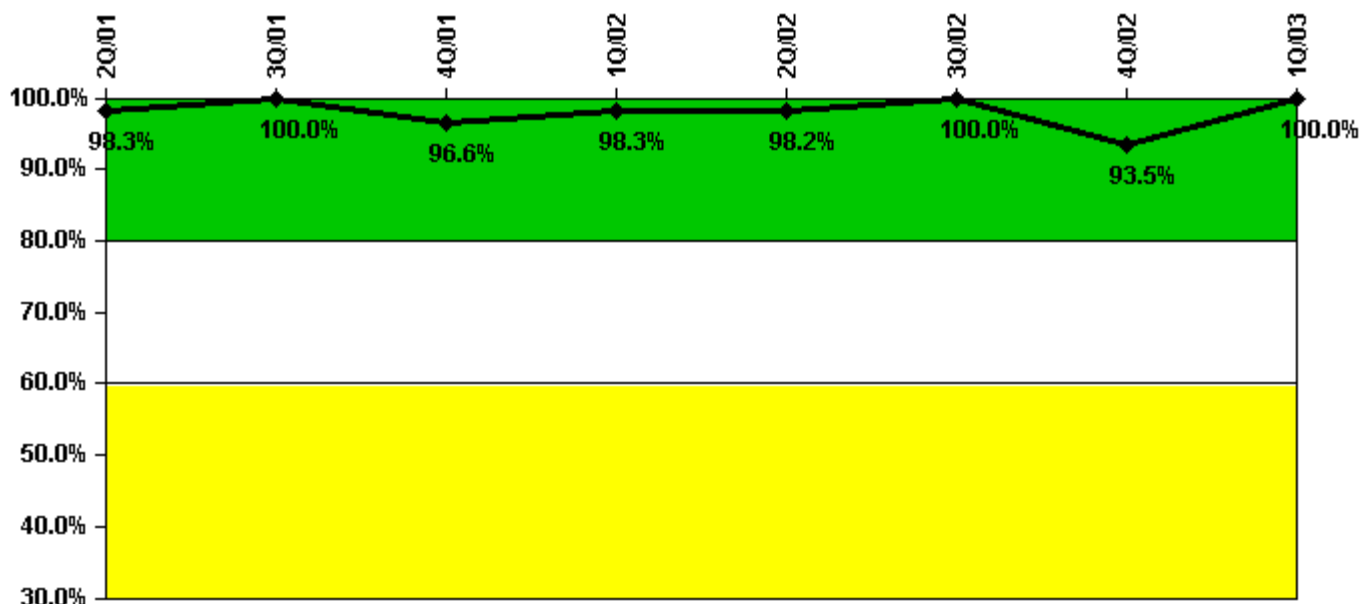
Thresholds: White < 90.0% Yellow < 70.0%

#### Notes

Drill/Exercise Performance	2Q/01	3Q/01	4Q/01	1Q/02	2Q/02	3Q/02	4Q/02	1Q/03
Successful opportunities	22.0	27.0	25.0	14.0	8.0	34.0	39.0	9.0
Total opportunities	22.0	28.0	25.0	14.0	8.0	37.0	41.0	12.0
Indicator value	98.6%	98.1%	98.9%	98.9%	98.9%	97.8%	96.8%	95.2%

Licensee Comments: none

### ERO Drill Participation



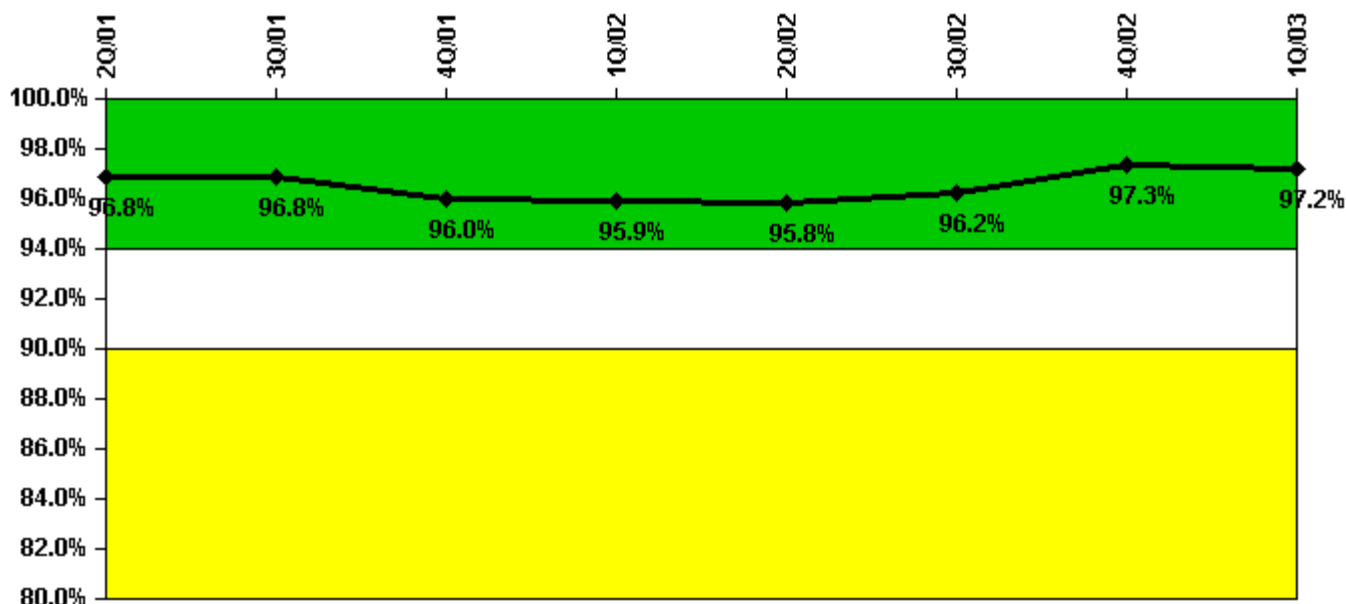
Thresholds: White < 80.0% Yellow < 60.0%

#### Notes

ERO Drill Participation	2Q/01	3Q/01	4Q/01	1Q/02	2Q/02	3Q/02	4Q/02	1Q/03
Participating Key personnel	59.0	57.0	57.0	58.0	54.0	58.0	58.0	57.0
Total Key personnel	60.0	57.0	59.0	59.0	55.0	58.0	62.0	57.0
Indicator value	98.3%	100.0%	96.6%	98.3%	98.2%	100.0%	93.5%	100.0%

Licensee Comments: none

### Alert & Notification System



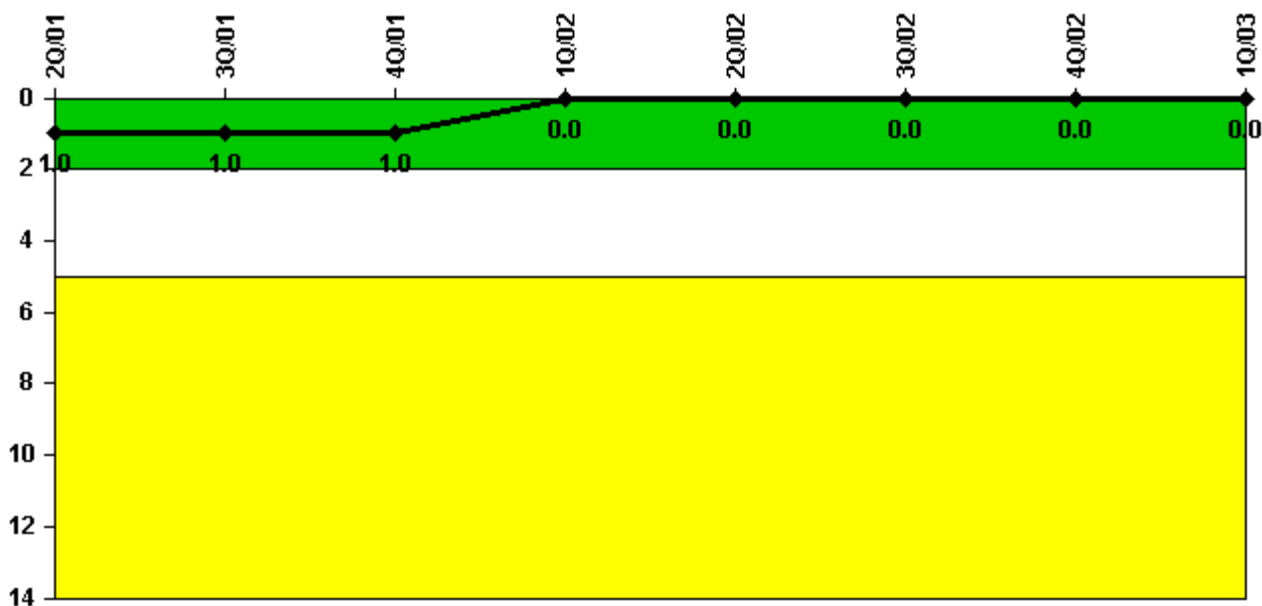
Thresholds: White < 94.0% Yellow < 90.0%

#### Notes

Alert & Notification System	2Q/01	3Q/01	4Q/01	1Q/02	2Q/02	3Q/02	4Q/02	1Q/03
Successful siren-tests	944	969	1078	918	956	1035	1007	914
Total sirens-tests	1002	1002	1140	930	1019	1057	1019	930
Indicator value	96.8%	96.8%	96.0%	95.9%	95.8%	96.2%	97.3%	97.2%

Licensee Comments: none

### Occupational Exposure Control Effectiveness



Thresholds: White > 2.0 Yellow > 5.0

#### Notes

Occupational Exposure Control Effectiveness	2Q/01	3Q/01	4Q/01	1Q/02	2Q/02	3Q/02	4Q/02	1Q/03
High radiation area occurrences	0	0	0	0	0	0	0	0
Very high radiation area occurrences	0	0	0	0	0	0	0	0
Unintended exposure occurrences	0	0	0	0	0	0	0	0
Indicator value	1	1	1	0	0	0	0	0

Licensee Comments: none

### RETS/ODCM Radiological Effluent



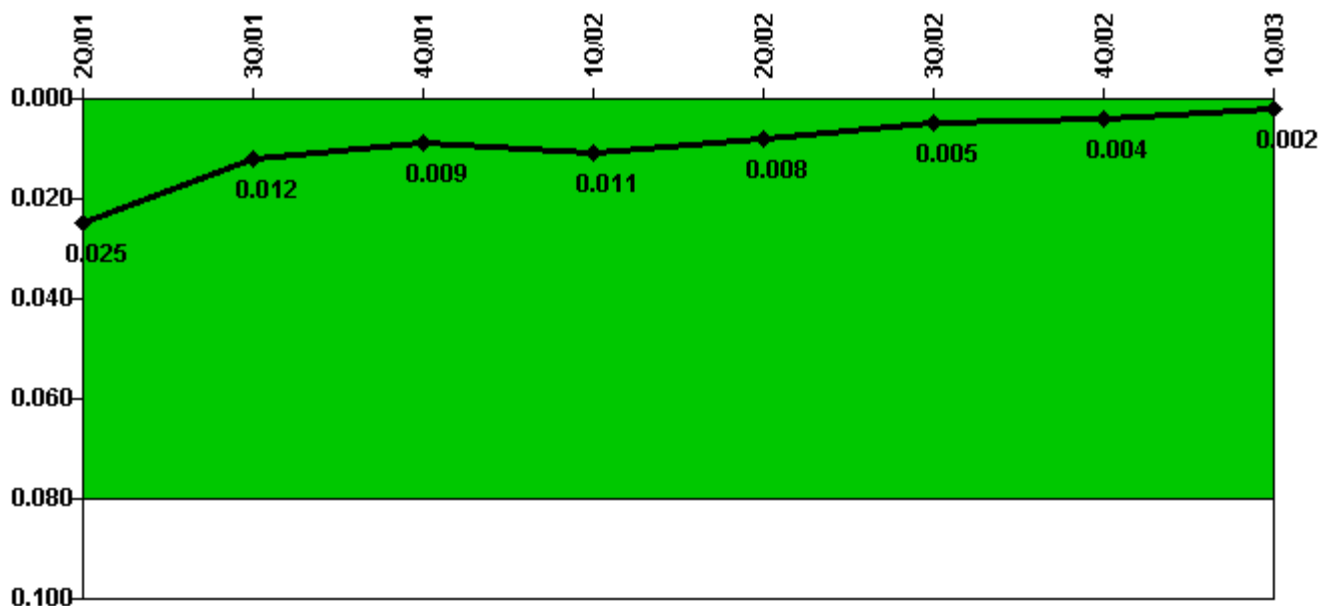
Thresholds: White > 1.0 Yellow > 3.0

#### Notes

RETS/ODCM Radiological Effluent	2Q/01	3Q/01	4Q/01	1Q/02	2Q/02	3Q/02	4Q/02	1Q/03
RETS/ODCM occurrences	0	0	0	0	0	0	0	0
Indicator value	0	0	0	0	0	0	0	0

Licensee Comments: none

### Protected Area Security Performance Index



Thresholds: White > 0.080

#### Notes

Protected Area Security Performance Index	2Q/01	3Q/01	4Q/01	1Q/02	2Q/02	3Q/02	4Q/02	1Q/03
IDS compensatory hours	85.60	69.60	39.90	51.10	1.80	7.80	14.20	24.90
CCTV compensatory hours	0	0	0	19.5	0	0	0	0
IDS normalization factor	1.40	1.40	1.40	1.40	1.40	1.40	1.40	1.40
CCTV normalization factor	1.2	1.2	1.2	1.2	1.2	1.2	1.2	1.2
Index Value	0.025	0.012	0.009	0.011	0.008	0.005	0.004	0.002

Licensee Comments: none



### Personnel Screening Program



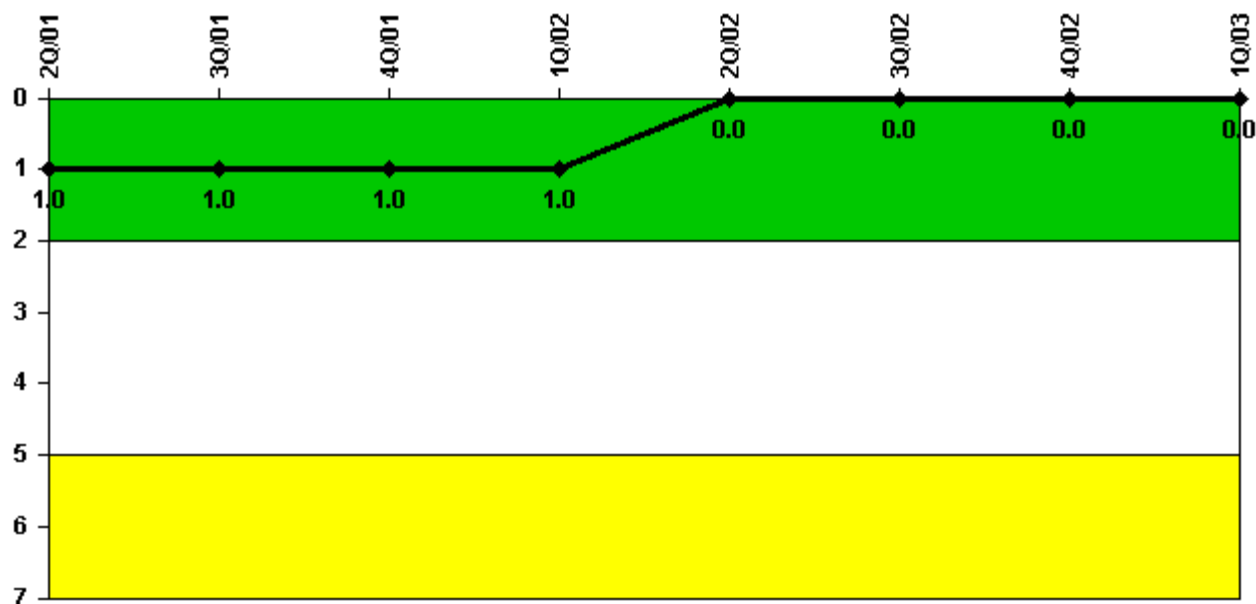
Thresholds: White > 2.0 Yellow > 5.0

#### Notes

Personnel Screening Program	2Q/01	3Q/01	4Q/01	1Q/02	2Q/02	3Q/02	4Q/02	1Q/03
Program failures	0	0	0	0	0	0	0	0
Indicator value	0	0	0	0	0	0	0	0

Licensee Comments: none

### FFD/Personnel Reliability



Thresholds: White > 2.0 Yellow > 5.0

#### Notes

FFD/Personnel Reliability	2Q/01	3Q/01	4Q/01	1Q/02	2Q/02	3Q/02	4Q/02	1Q/03
Program Failures	1	0	0	0	0	0	0	0
Indicator value	1	1	1	1	0	0	0	0

Licensee Comments: none

▲ [PI Summary](#) | [Inspection Findings Summary](#) | [Reactor Oversight Process](#)

Last Modified: April 30, 2003