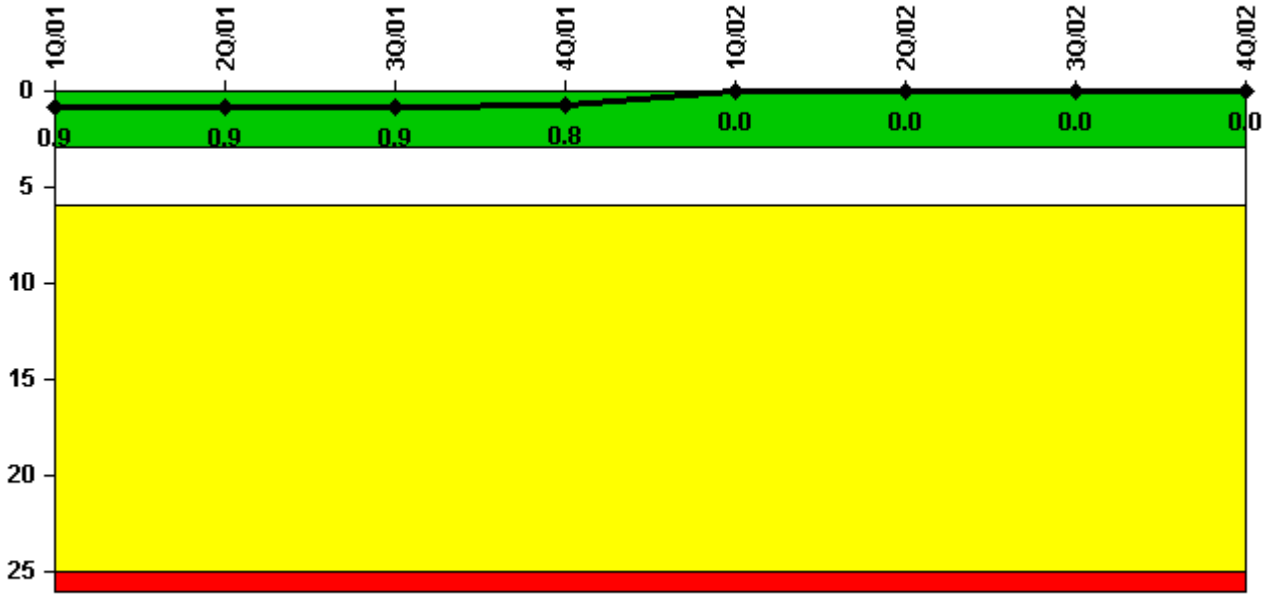


# Turkey Point 4

## 4Q/2002 Performance Indicators

Licensee's General Comments: none

### Unplanned Scrams per 7000 Critical Hrs



Thresholds: White > 3.0 Yellow > 6.0 Red > 25.0

### Notes

Unplanned Scrams per 7000 Critical Hrs	1Q/01	2Q/01	3Q/01	4Q/01	1Q/02	2Q/02	3Q/02	4Q/02
Unplanned scrams	1.0	0	0	0	0	0	0	0
Critical hours	2031.5	2183.0	2208.0	2209.0	1944.0	2032.2	2208.0	2209.0
Indicator value	0.9	0.9	0.9	0.8	0	0	0	0

Licensee Comments: none

### Scrams with Loss of Normal Heat Removal



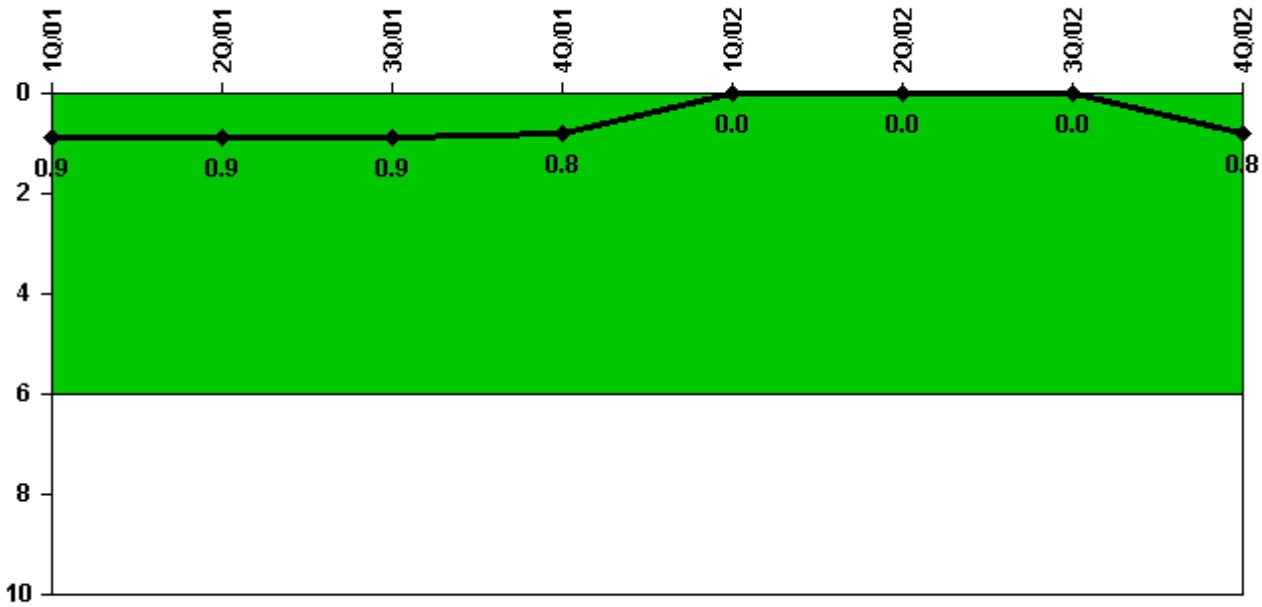
Thresholds: White > 2.0 Yellow > 10.0 Red > 20.0

#### Notes

Scrams with Loss of Normal Heat Removal	1Q/01	2Q/01	3Q/01	4Q/01	1Q/02	2Q/02	3Q/02	4Q/02
Scrams	0	0	0	0	0	0	0	0
Indicator value	0	0	0	0	0	0	0	0

Licensee Comments: none

### Unplanned Power Changes per 7000 Critical Hrs



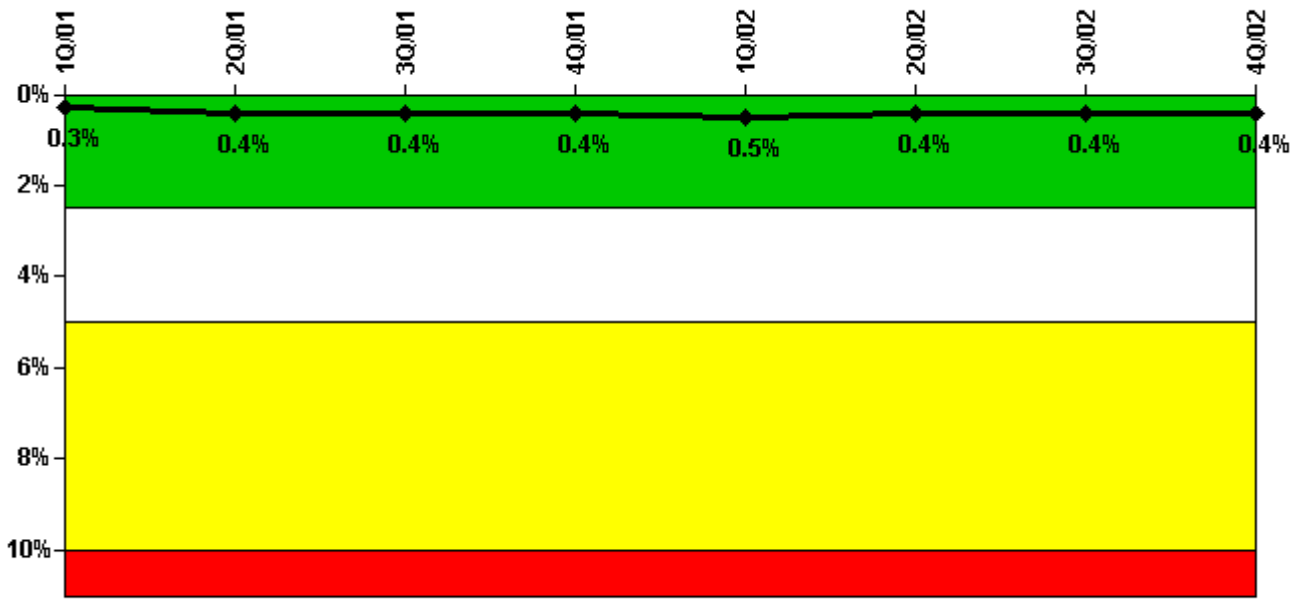
Thresholds: White > 6.0

#### Notes

Unplanned Power Changes per 7000 Critical Hrs	1Q/01	2Q/01	3Q/01	4Q/01	1Q/02	2Q/02	3Q/02	4Q/02
Unplanned power changes	1.0	0	0	0	0	0	0	1.0
Critical hours	2031.5	2183.0	2208.0	2209.0	1944.0	2032.2	2208.0	2209.0
Indicator value	0.9	0.9	0.9	0.8	0	0	0	0.8

Licensee Comments: none

### Safety System Unavailability, Emergency AC Power



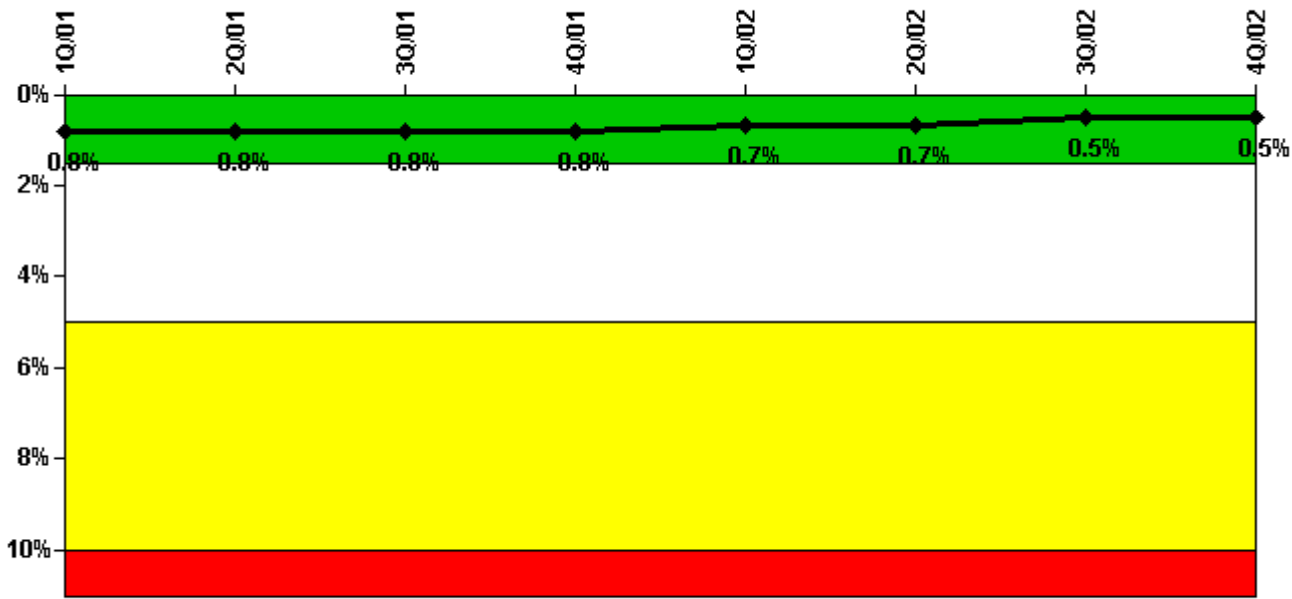
Thresholds: White > 2.5% Yellow > 5.0% Red > 10.0%

#### Notes

Safety System Unavailability, Emergency AC Power	1Q/01	2Q/01	3Q/01	4Q/01	1Q/02	2Q/02	3Q/02	4Q/02
<b>Train 1</b>								
Planned unavailable hours	4.00	2.40	30.20	4.00	2.90	2.40	0.80	3.20
Unplanned unavailable hours	0	13.00	0	0	9.10	0	0	0
Fault exposure hours	0	0	0	0	0	0	0	0
Effective Reset hours	0	0	0	0	0	0	0	0
Required hours	2160.00	2183.00	2208.00	2209.00	2056.80	2121.30	2208.00	2209.00
<b>Train 2</b>								
Planned unavailable hours	4.00	24.00	1.60	4.00	4.40	2.40	0.80	2.40
Unplanned unavailable hours	0	0	0.80	0.20	0	7.60	0	14.60
Fault exposure hours	0	0	0	0	0	0	0	0
Effective Reset hours	0	0	0	0	0	0	0	0
Required hours	2160.00	2183.00	2208.00	2209.00	2056.80	2121.30	2208.00	2209.00
<b>Indicator value</b>	<b>0.3%</b>	<b>0.4%</b>	<b>0.4%</b>	<b>0.4%</b>	<b>0.5%</b>	<b>0.4%</b>	<b>0.4%</b>	<b>0.4%</b>

Licensee Comments: none

### Safety System Unavailability, High Pressure Injection System (HPSI)



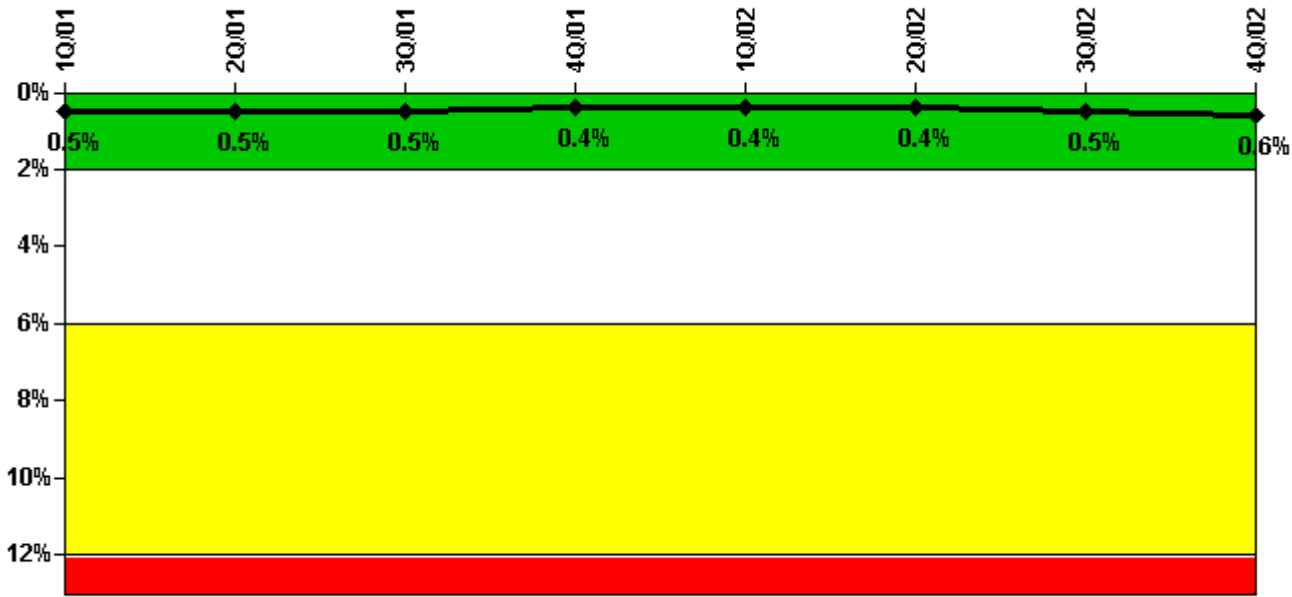
Thresholds: White > 1.5% Yellow > 5.0% Red > 10.0%

#### Notes

Safety System Unavailability, High Pressure Injection System (HPSI)	1Q/01	2Q/01	3Q/01	4Q/01	1Q/02	2Q/02	3Q/02	4Q/02
<b>Train 1</b>								
Planned unavailable hours	10.50	1.00	0	0	15.10	0	1.90	0
Unplanned unavailable hours	0	0	0	0	0	0	0	0
Fault exposure hours	0	0	0	0	0	0	0	0
Effective Reset hours	0	0	0	0	0	0	0	0
Required hours	2046.50	2183.00	2208.00	2209.00	1949.20	2050.50	2208.00	2209.00
<b>Train 2</b>								
Planned unavailable hours	0	17.13	0	0	8.80	20.20	0	5.50
Unplanned unavailable hours	33.80	0	0	0	0	0	0	0
Fault exposure hours	22.20	0	0	0	0	0	0	0
Effective Reset hours	0	0	0	0	0	0	0	0
Required hours	2046.50	2183.00	2208.00	2209.00	1949.20	2050.50	2208.00	2209.00
Indicator value	0.8%	0.8%	0.8%	0.8%	0.7%	0.7%	0.5%	0.5%

Licensee Comments: none

### Safety System Unavailability, Heat Removal System (AFW)



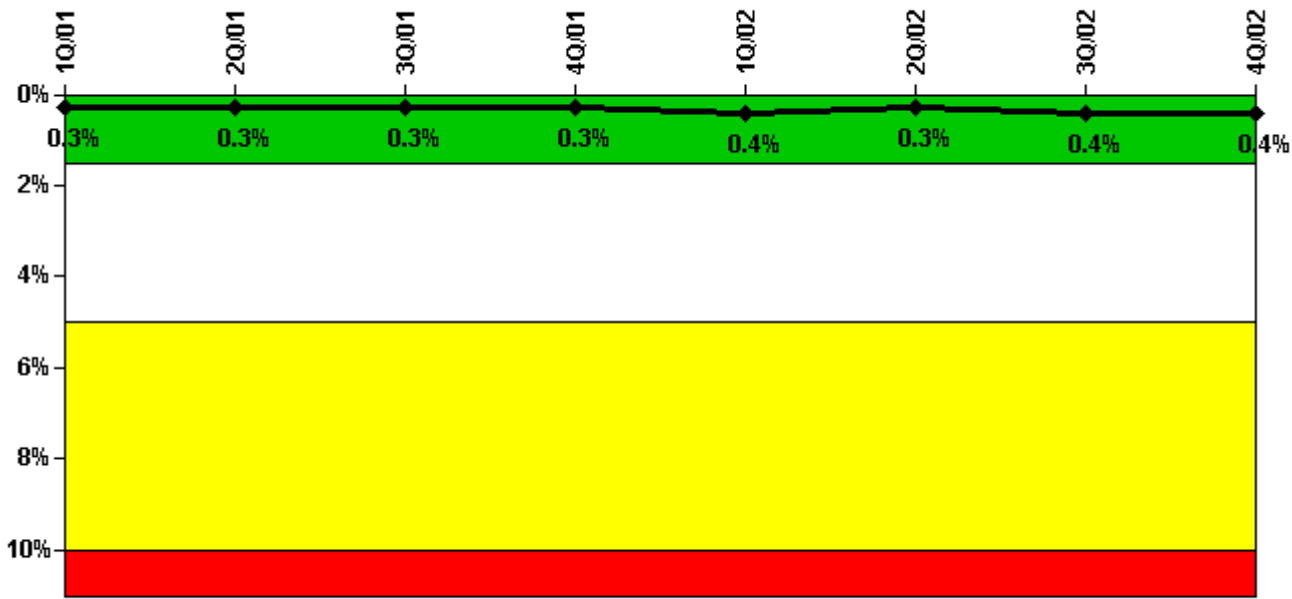
Thresholds: White > 2.0% Yellow > 6.0% Red > 12.0%

#### Notes

Safety System Unavailability, Heat Removal System (AFW)	1Q/01	2Q/01	3Q/01	4Q/01	1Q/02	2Q/02	3Q/02	4Q/02
<b>Train 1</b>								
Planned unavailable hours	0.40	3.20	1.30	1.30	0	11.80	8.00	21.60
Unplanned unavailable hours	0	0	0	0.50	0	0	0	6.90
Fault exposure hours	0	0	0	0	0	0	0	0
Effective Reset hours	0	0	0	0	0	0	0	0
Required hours	2046.50	2183.00	2208.00	2209.00	1949.20	2050.50	2208.00	2209.00
<b>Train 2</b>								
Planned unavailable hours	7.50	0	1.60	1.00	0	0	54.00	42.70
Unplanned unavailable hours	0	0	0	0	0	0	0	0
Fault exposure hours	0	0	0	0	0	0	0	0
Effective Reset hours	0	0	0	0	0	0	0	0
Required hours	2046.50	2183.00	2208.00	2209.00	1949.20	2050.50	2208.00	2209.00
Indicator value	0.5%	0.5%	0.5%	0.4%	0.4%	0.4%	0.5%	0.6%

Licensee Comments: none

### Safety System Unavailability, Residual Heat Removal System



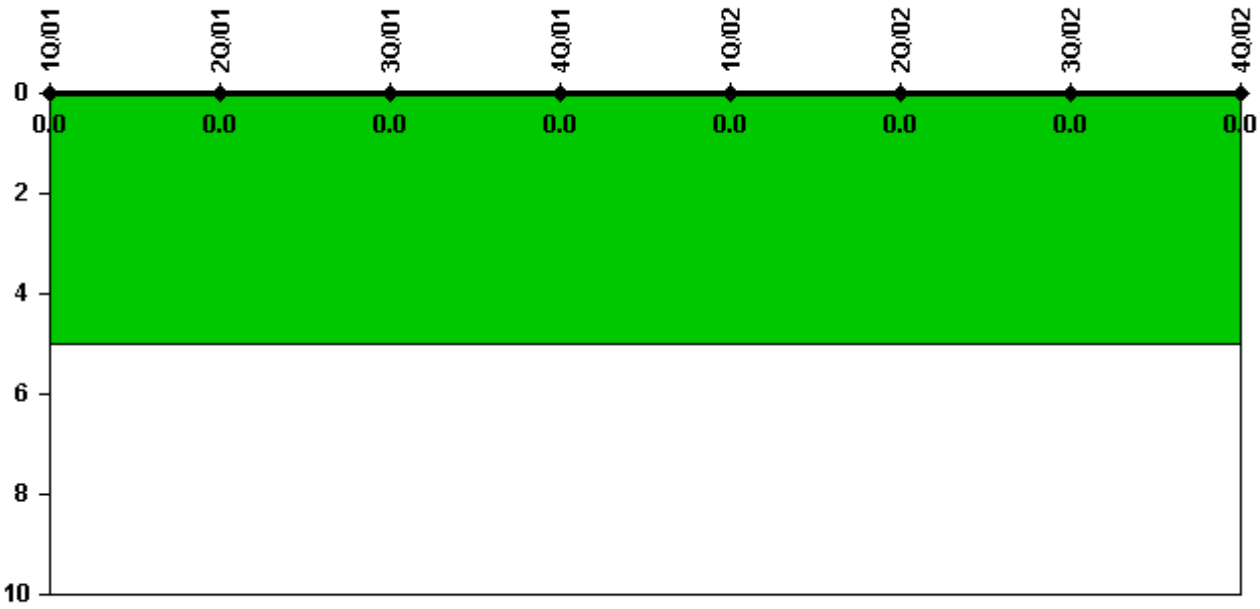
Thresholds: White > 1.5% Yellow > 5.0% Red > 10.0%

#### Notes

Safety System Unavailability, Residual Heat Removal System	1Q/01	2Q/01	3Q/01	4Q/01	1Q/02	2Q/02	3Q/02	4Q/02
<b>Train 1</b>								
Planned unavailable hours	0.55	3.37	0.40	3.90	30.40	3.50	19.00	1.90
Unplanned unavailable hours	0	0	0	0	0	0	0	0
Fault exposure hours	0	0	0	0	0	0	0	0
Effective Reset hours	0	0	0	0	0	0	0	0
Required hours	2160.00	2183.00	2208.00	2209.00	1980.00	2167.30	2208.00	2209.00
<b>Train 2</b>								
Planned unavailable hours	0.72	3.27	1.10	1.10	22.10	3.10	22.30	15.50
Unplanned unavailable hours	0	0	0	0	0	0.10	0	0
Fault exposure hours	0	0	0	0	0	0	0	0
Effective Reset hours	0	0	0	0	0	0	0	0
Required hours	2160.00	2183.00	2208.00	2209.00	1980.00	2167.30	2208.00	2209.00
<b>Indicator value</b>	0.3%	0.3%	0.3%	0.3%	0.4%	0.3%	0.4%	0.4%

Licensee Comments: none

### Safety System Functional Failures (PWR)



Thresholds: White > 5.0

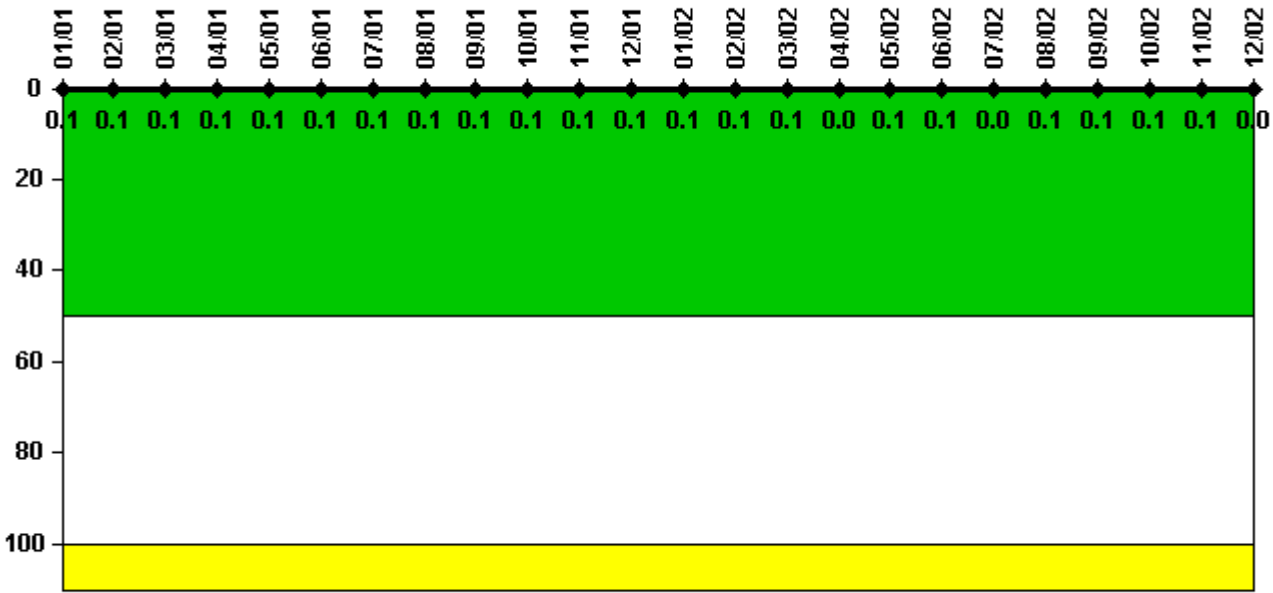
#### Notes

Safety System Functional Failures (PWR)	1Q/01	2Q/01	3Q/01	4Q/01	1Q/02	2Q/02	3Q/02	4Q/02
Safety System Functional Failures	0	0	0	0	0	0	0	0
Indicator value	0	0	0	0	0	0	0	0

Licensee Comments: none



### Reactor Coolant System Activity



Thresholds: White > 50.0 Yellow > 100.0

#### Notes

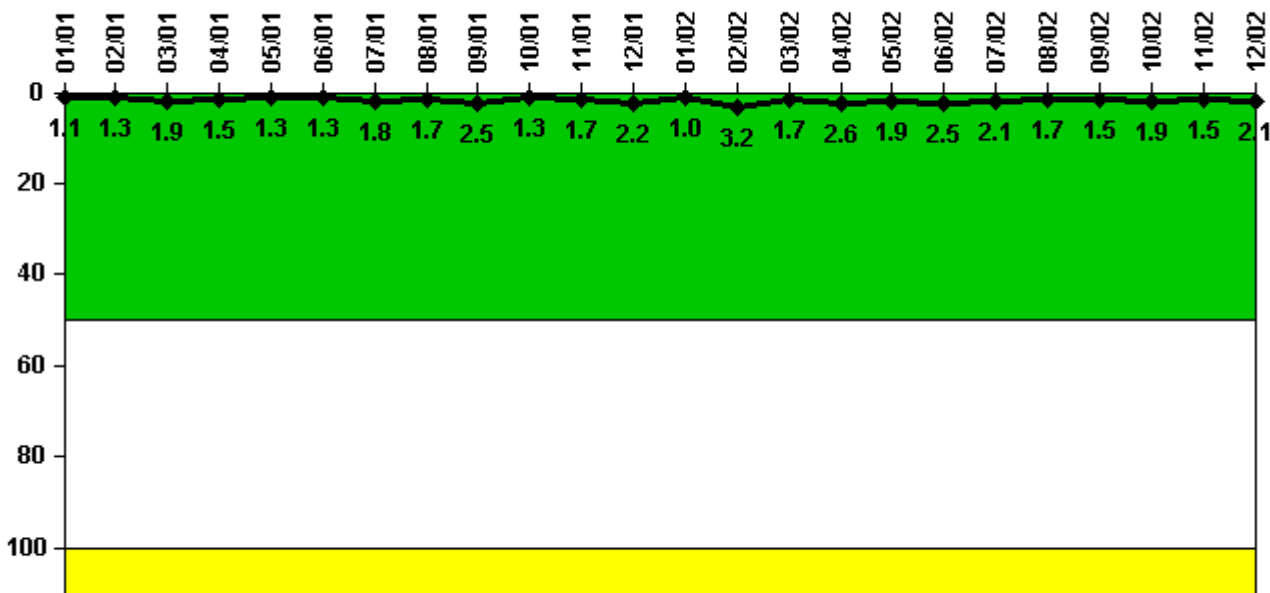
Reactor Coolant System Activity	1/01	2/01	3/01	4/01	5/01	6/01	7/01	8/01	9/01	10/01	11/01	12/01
Maximum activity	0.000545	0.000572	0.000607	0.000736	0.000730	0.000764	0.000811	0.000791	0.000843	0.000900	0.000866	0.000993
Technical specification limit	1.0	1.0	1.0	1.0	1.0	1.0	1.0	1.0	1.0	1.0	1.0	1.0
Indicator value	0.1	0.1	0.1	0.1	0.1	0.1	0.1	0.1	0.1	0.1	0.1	0.1

Reactor Coolant System Activity	1/02	2/02	3/02	4/02	5/02	6/02	7/02	8/02	9/02	10/02	11/02	12/02
Maximum activity	0.001040	0.001020	0.001090	0.000438	0.000558	0.000854	0.000463	0.000519	0.000656	0.000530	0.000682	0.000391
Technical specification limit	1.0	1.0	1.0	1.0	1.0	1.0	1.0	1.0	1.0	1.0	1.0	1.0
Indicator value	0.1	0.1	0.1	0	0.1	0.1	0	0.1	0.1	0.1	0.1	0

Licensee Comments: none

### Reactor Coolant System Leakage



Thresholds: White > 50.0 Yellow > 100.0

#### Notes

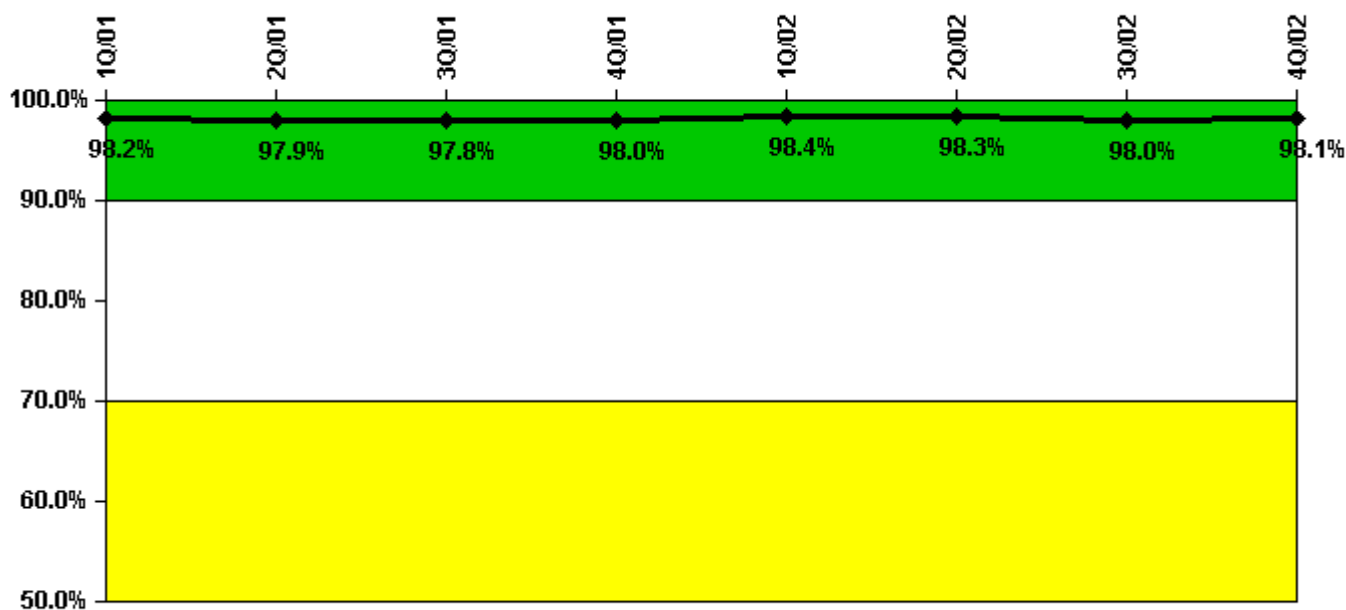
Reactor Coolant System Leakage	1/01	2/01	3/01	4/01	5/01	6/01	7/01	8/01	9/01	10/01	11/01	12/01
Maximum leakage	0.110	0.130	0.190	0.150	0.130	0.130	0.180	0.170	0.250	0.130	0.170	0.220
Technical specification limit	10.0	10.0	10.0	10.0	10.0	10.0	10.0	10.0	10.0	10.0	10.0	10.0
Indicator value	1.1	1.3	1.9	1.5	1.3	1.3	1.8	1.7	2.5	1.3	1.7	2.2

Reactor Coolant System Leakage	1/02	2/02	3/02	4/02	5/02	6/02	7/02	8/02	9/02	10/02	11/02	12/02
Maximum leakage	0.100	0.320	0.170	0.260	0.190	0.250	0.210	0.170	0.150	0.190	0.150	0.210
Technical specification limit	10.0	10.0	10.0	10.0	10.0	10.0	10.0	10.0	10.0	10.0	10.0	10.0
Indicator value	1.0	3.2	1.7	2.6	1.9	2.5	2.1	1.7	1.5	1.9	1.5	2.1

Licensee Comments: none

### Drill/Exercise Performance



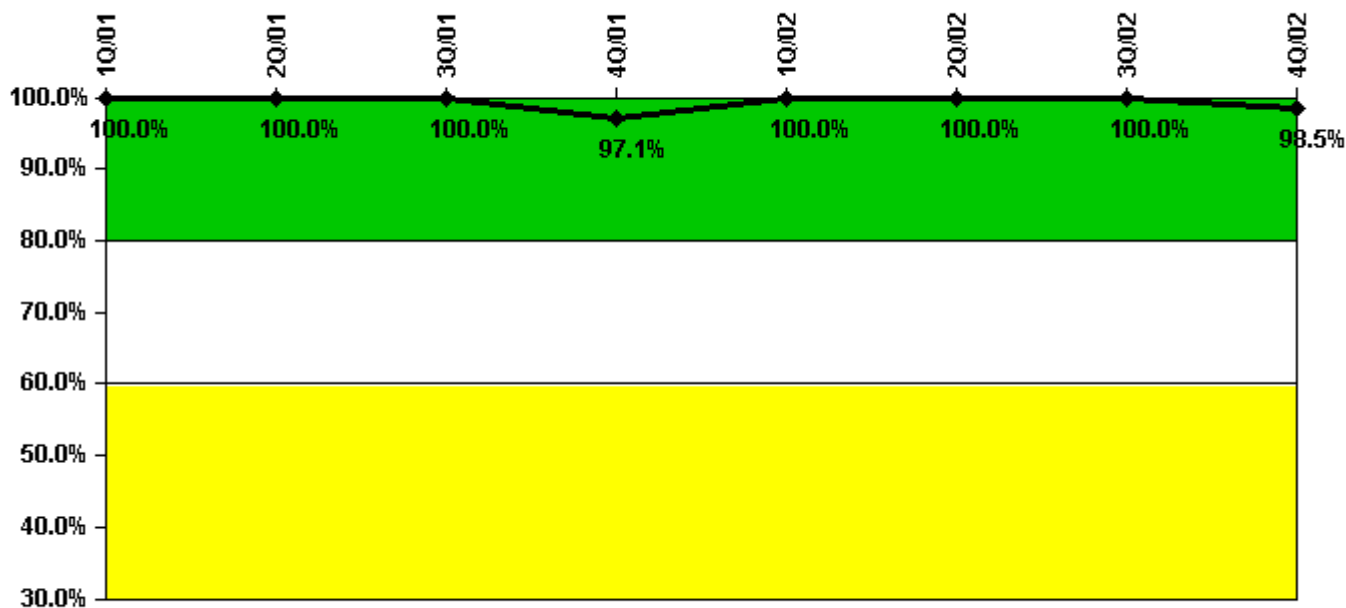
Thresholds: White < 90.0% Yellow < 70.0%

### Notes

Drill/Exercise Performance	1Q/01	2Q/01	3Q/01	4Q/01	1Q/02	2Q/02	3Q/02	4Q/02
Successful opportunities	71.0	56.0	41.0	40.0	46.0	38.0	39.0	37.0
Total opportunities	72.0	57.0	42.0	40.0	49.0	38.0	40.0	37.0
Indicator value	98.2%	97.9%	97.8%	98.0%	98.4%	98.3%	98.0%	98.1%

Licensee Comments: none

### ERO Drill Participation



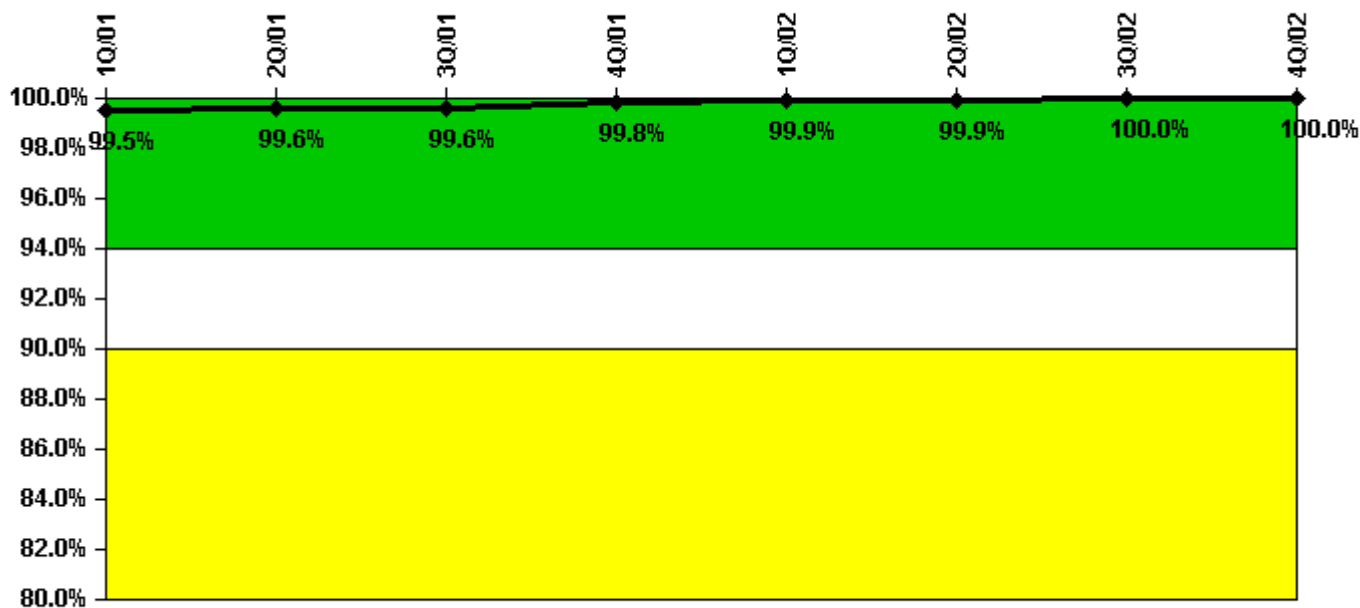
Thresholds: White < 80.0% Yellow < 60.0%

#### Notes

ERO Drill Participation	1Q/01	2Q/01	3Q/01	4Q/01	1Q/02	2Q/02	3Q/02	4Q/02
Participating Key personnel	67.0	69.0	67.0	67.0	70.0	67.0	66.0	65.0
Total Key personnel	67.0	69.0	67.0	69.0	70.0	67.0	66.0	66.0
Indicator value	100.0%	100.0%	100.0%	97.1%	100.0%	100.0%	100.0%	98.5%

Licensee Comments: none

### Alert & Notification System



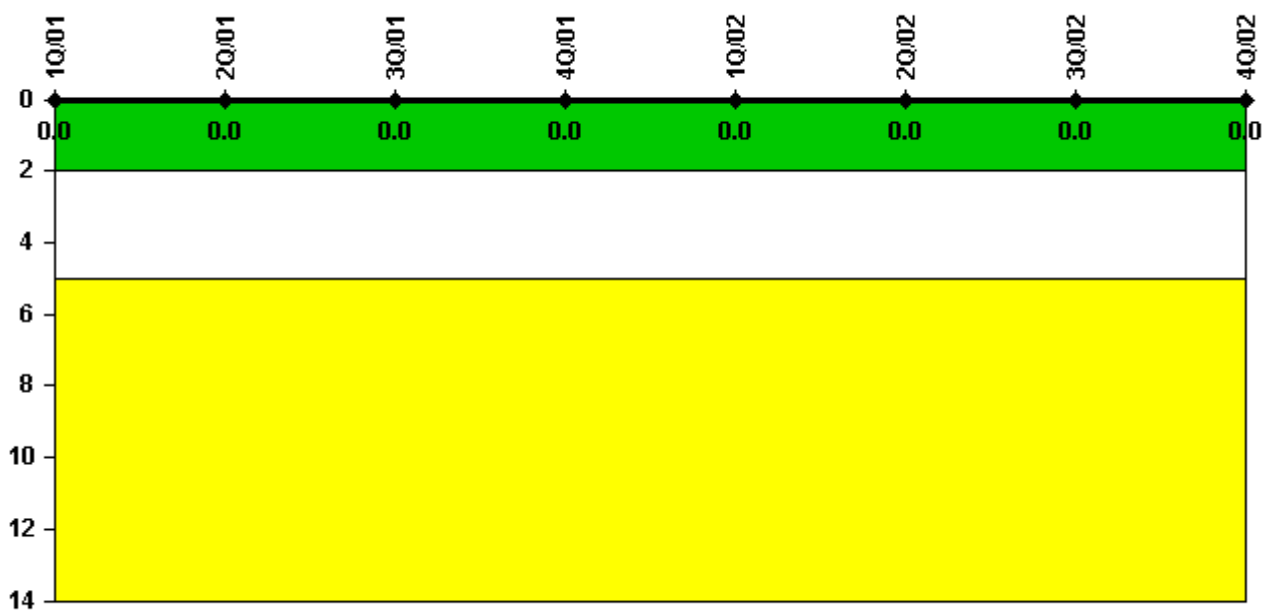
Thresholds: White < 94.0% Yellow < 90.0%

#### Notes

Alert & Notification System	1Q/01	2Q/01	3Q/01	4Q/01	1Q/02	2Q/02	3Q/02	4Q/02
Successful siren-tests	327	329	281	376	329	376	329	376
Total sirens-tests	329	329	282	376	329	376	329	376
Indicator value	99.5%	99.6%	99.6%	99.8%	99.9%	99.9%	100.0%	100.0%

Licensee Comments: none

### Occupational Exposure Control Effectiveness



Thresholds: White > 2.0 Yellow > 5.0

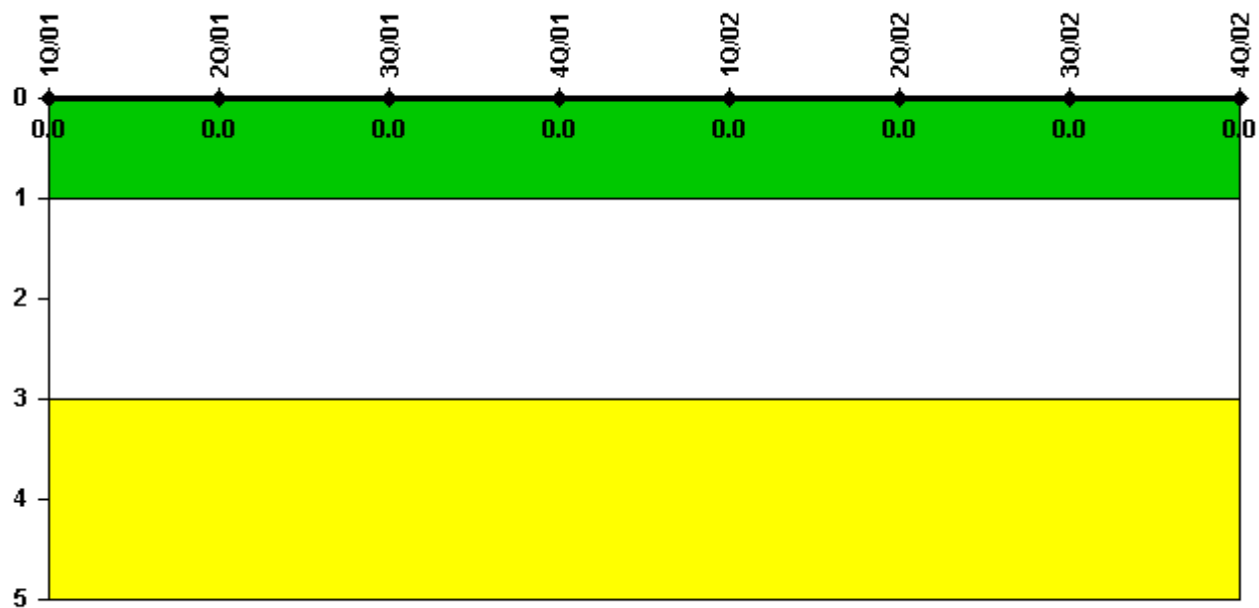
#### Notes

Occupational Exposure Control Effectiveness	1Q/01	2Q/01	3Q/01	4Q/01	1Q/02	2Q/02	3Q/02	4Q/02
High radiation area occurrences	0	0	0	0	0	0	0	0
Very high radiation area occurrences	0	0	0	0	0	0	0	0
Unintended exposure occurrences	0	0	0	0	0	0	0	0
Indicator value	0	0	0	0	0	0	0	0

#### Licensee Comments:

4Q/02: On 11/12/02, a procedural violation of a very high radiation area posting occurred, when an operator was stationed in the airlock with the outer airlock door closed and the inner airlock door open. The HP technician outside the outer airlock door was unable to gain access to the airlock under these conditions. This was treated as a violation of a very high radiation area posting due to the HP technician's inability to positively control the activities of the operator in the airlock. However, at no time were any personnel able to gain authorized or inadvertent access to areas in which radiation levels could be encountered at the 10CFR20.1602 limits. A FAQ was submitted on 12/17/02 for clarification as to whether or not the event will be considered a high radiation area occurrence for the quarter.

### RETS/ODCM Radiological Effluent



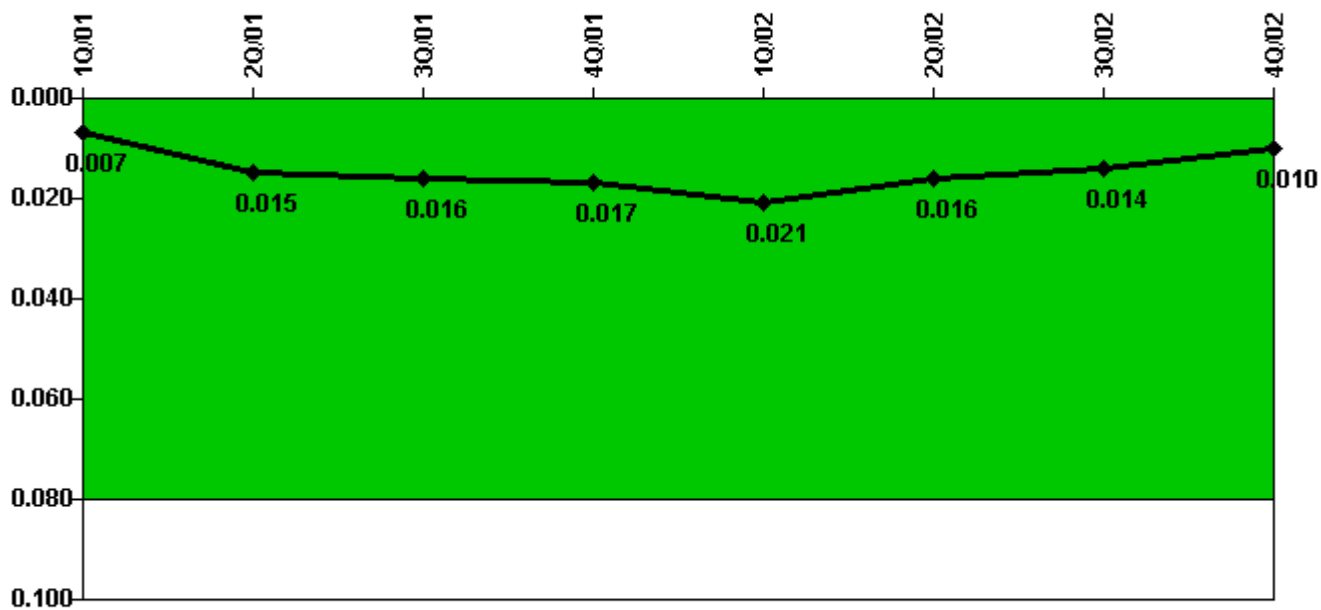
Thresholds: White > 1.0 Yellow > 3.0

**Notes**

RETS/ODCM Radiological Effluent	1Q/01	2Q/01	3Q/01	4Q/01	1Q/02	2Q/02	3Q/02	4Q/02
RETS/ODCM occurrences	0	0	0	0	0	0	0	0
Indicator value	0	0	0	0	0	0	0	0

Licensee Comments: none

### Protected Area Security Performance Index



Thresholds: White > 0.080

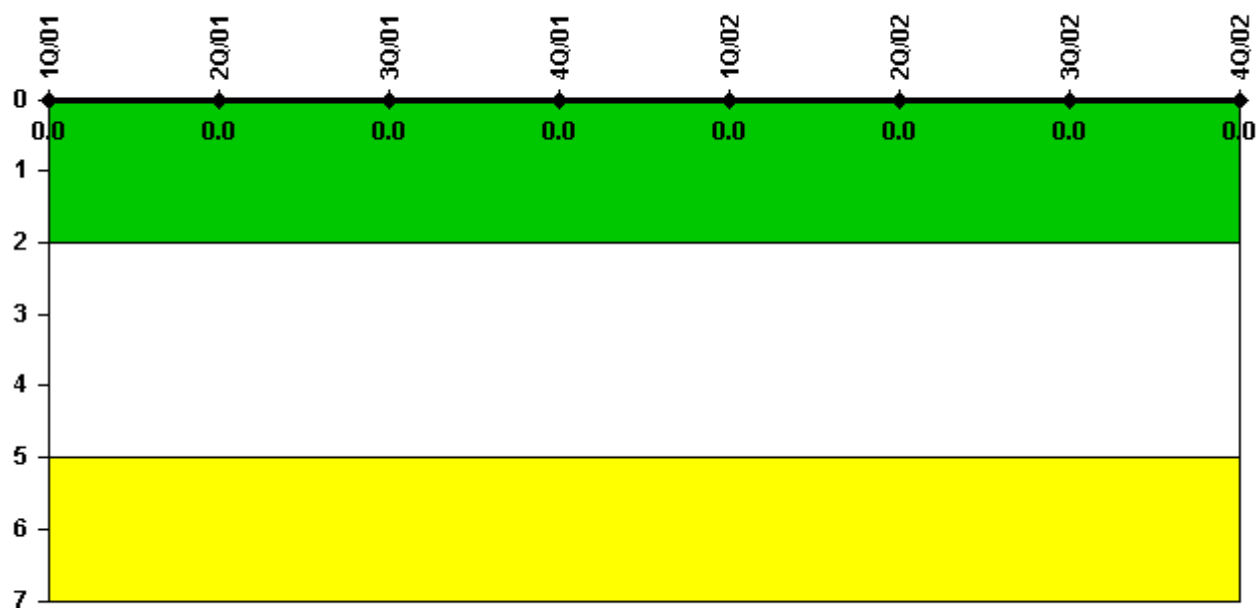
#### Notes

Protected Area Security Performance Index	1Q/01	2Q/01	3Q/01	4Q/01	1Q/02	2Q/02	3Q/02	4Q/02
IDS compensatory hours	13.40	311.80	108.60	148.00	156.70	122.20	40.70	10.50
CCTV compensatory hours	0	0	0	0	0	0	0	0
IDS normalization factor	1.95	1.95	1.95	1.95	1.95	1.95	1.95	1.95
CCTV normalization factor	2.2	2.2	2.2	2.2	2.2	2.2	2.2	2.2
<b>Index Value</b>	<b>0.007</b>	<b>0.015</b>	<b>0.016</b>	<b>0.017</b>	<b>0.021</b>	<b>0.016</b>	<b>0.014</b>	<b>0.010</b>

Licensee Comments: none



### Personnel Screening Program



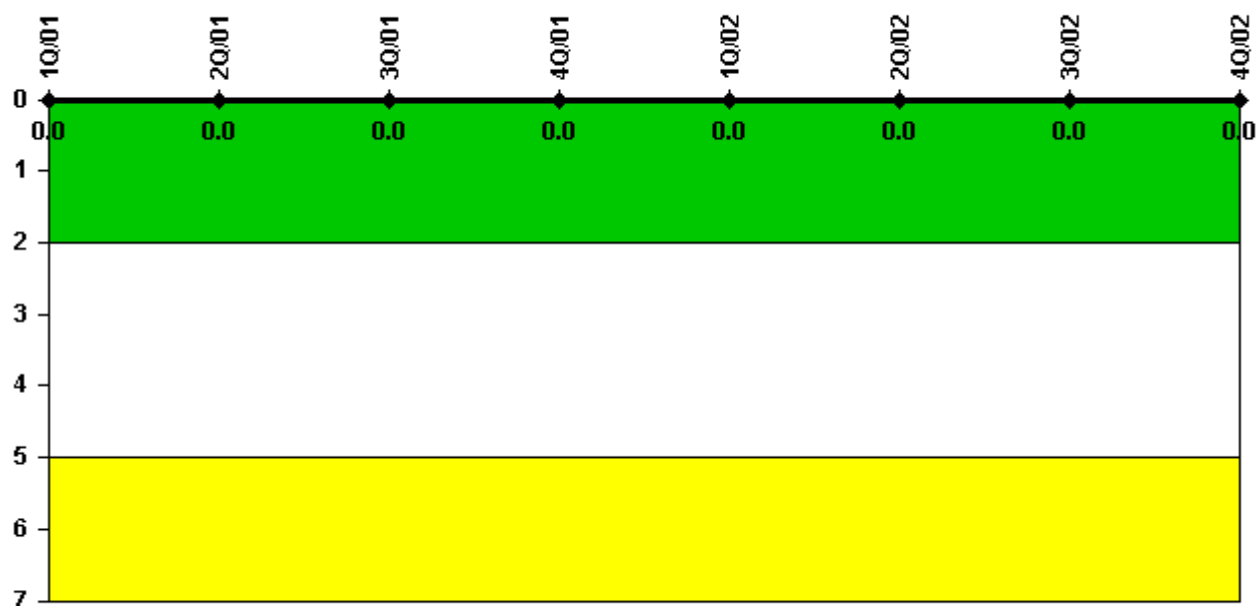
Thresholds: White > 2.0 Yellow > 5.0

#### Notes

Personnel Screening Program	1Q/01	2Q/01	3Q/01	4Q/01	1Q/02	2Q/02	3Q/02	4Q/02
Program failures	0	0	0	0	0	0	0	0
Indicator value	0	0	0	0	0	0	0	0

Licensee Comments: none

### FFD/Personnel Reliability



Thresholds: White > 2.0 Yellow > 5.0

### Notes

FFD/Personnel Reliability	1Q/01	2Q/01	3Q/01	4Q/01	1Q/02	2Q/02	3Q/02	4Q/02
Program Failures	0	0	0	0	0	0	0	0
Indicator value	0	0	0	0	0	0	0	0

Licensee Comments: none

▲ [PI Summary](#) | [Inspection Findings Summary](#) | [Reactor Oversight Process](#)

Last Modified: January 30, 2003