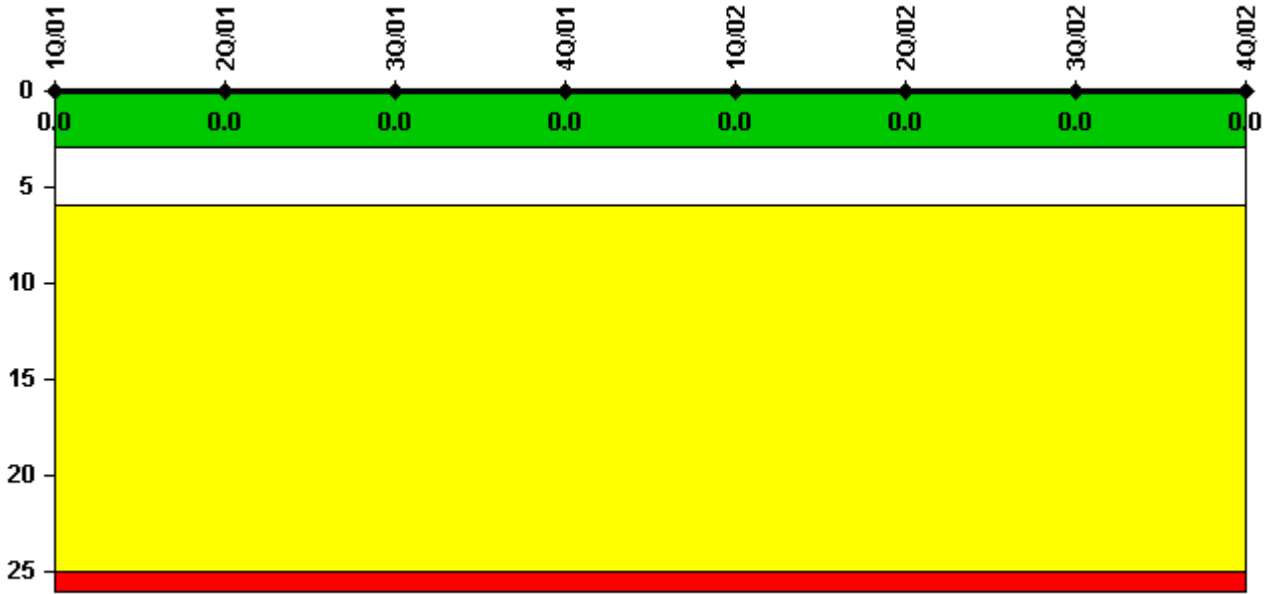


# Three Mile Island 1

## 4Q/2002 Performance Indicators

Licensee's General Comments: none

### Unplanned Scrams per 7000 Critical Hrs



**Thresholds: White > 3.0 Yellow > 6.0 Red > 25.0**

### Notes

Unplanned Scrams per 7000 Critical Hrs	1Q/01	2Q/01	3Q/01	4Q/01	1Q/02	2Q/02	3Q/02	4Q/02
Unplanned scrams	0	0	0	0	0	0	0	0
Critical hours	2160.0	2152.7	2208.0	852.1	2160.0	2183.0	2208.0	2209.0
Indicator value	0	0	0	0	0	0	0	0

Licensee Comments: none

---

### Scrams with Loss of Normal Heat Removal



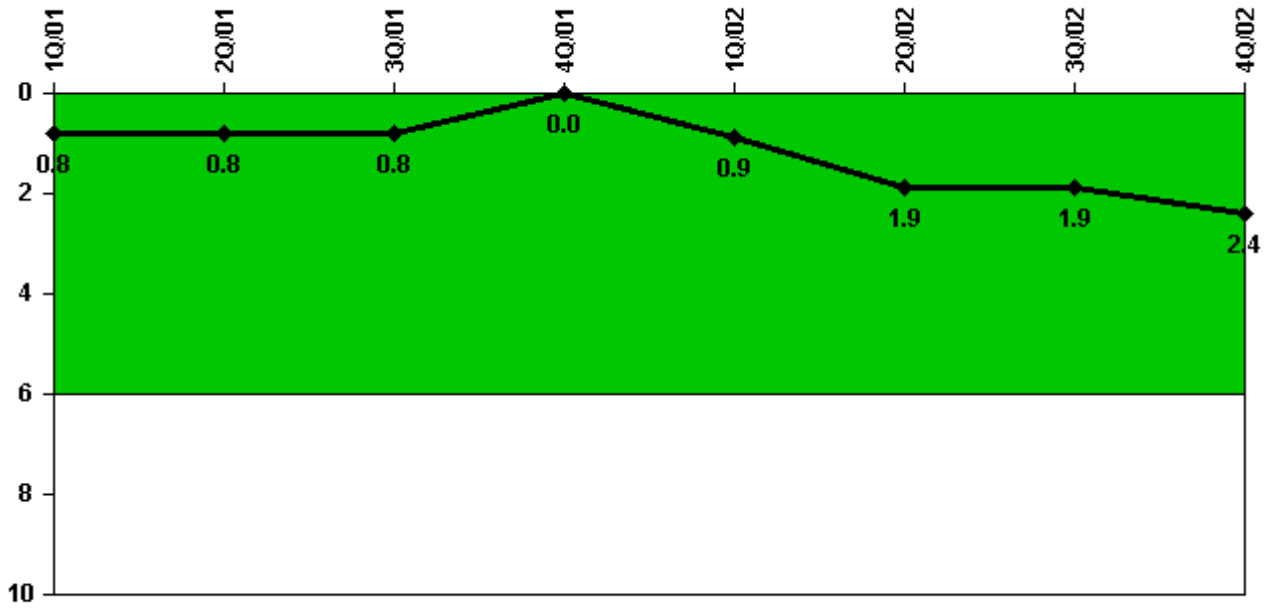
Thresholds: White > 2.0 Yellow > 10.0 Red > 20.0

#### Notes

Scrams with Loss of Normal Heat Removal	1Q/01	2Q/01	3Q/01	4Q/01	1Q/02	2Q/02	3Q/02	4Q/02
Scrams	0	0	0	0	0	0	0	0
Indicator value	0	0	0	0	0	0	0	0

Licensee Comments: none

### Unplanned Power Changes per 7000 Critical Hrs



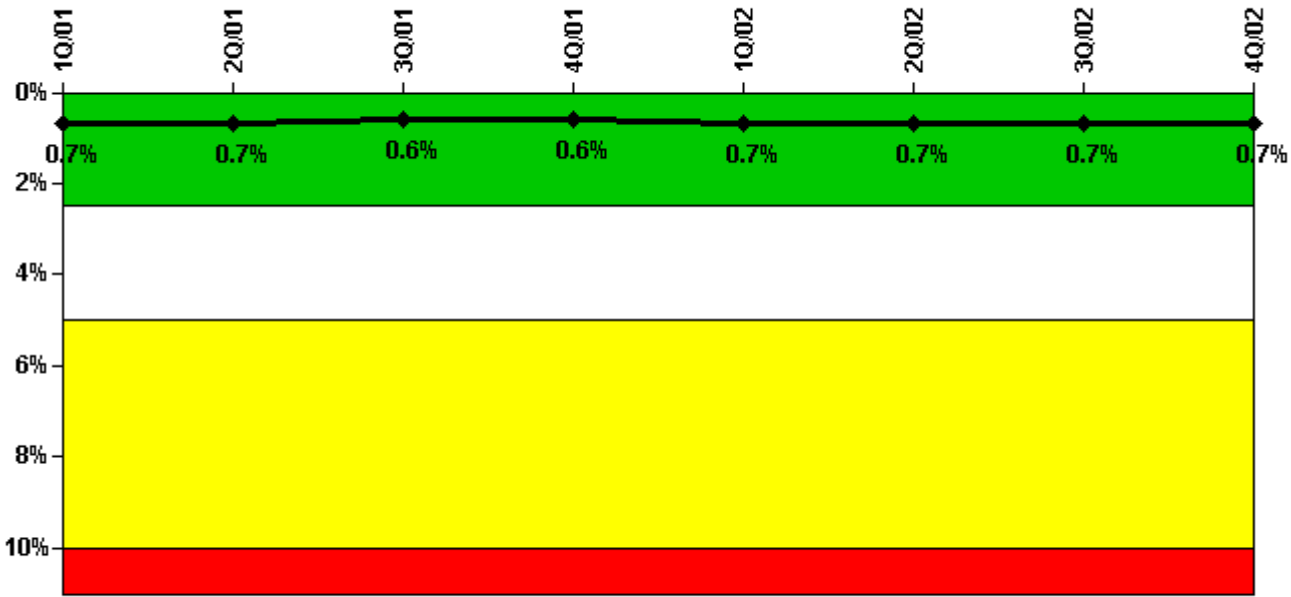
Thresholds: White > 6.0

#### Notes

Unplanned Power Changes per 7000 Critical Hrs	1Q/01	2Q/01	3Q/01	4Q/01	1Q/02	2Q/02	3Q/02	4Q/02
Unplanned power changes	0	0	0	0	1.0	1.0	0	1.0
Critical hours	2160.0	2153.0	2208.0	852.1	2160.0	2183.0	2208.0	2209.0
Indicator value	0.8	0.8	0.8	0	0.9	1.9	1.9	2.4

Licensee Comments: none

### Safety System Unavailability, Emergency AC Power



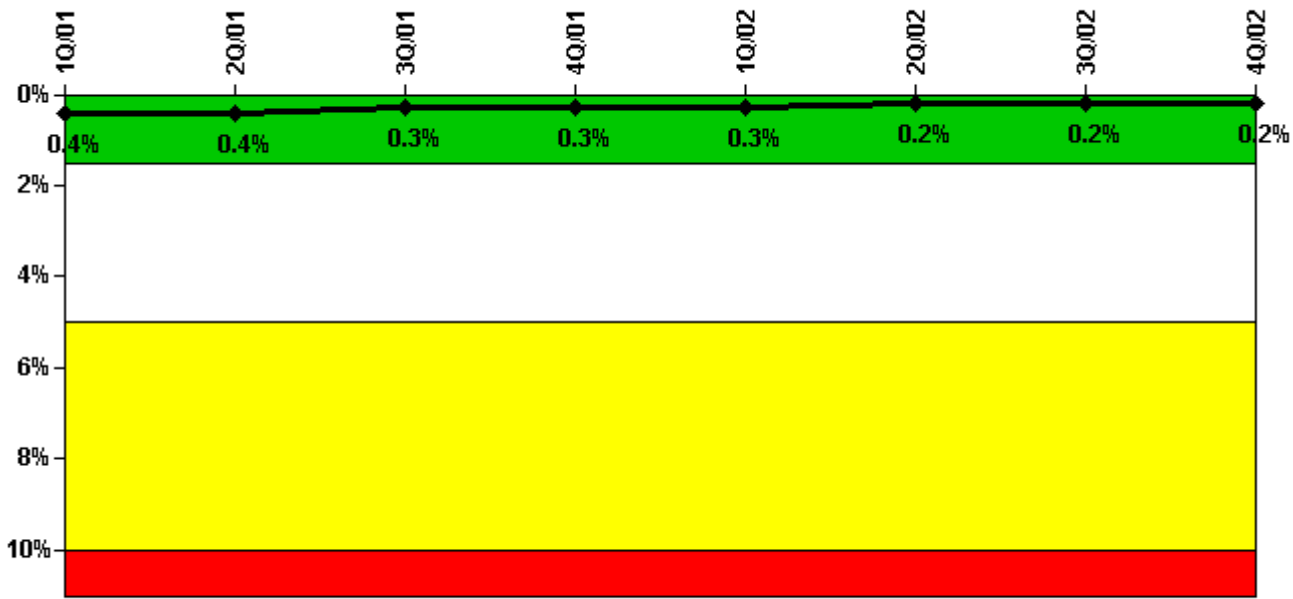
Thresholds: White > 2.5% Yellow > 5.0% Red > 10.0%

#### Notes

Safety System Unavailability, Emergency AC Power	1Q/01	2Q/01	3Q/01	4Q/01	1Q/02	2Q/02	3Q/02	4Q/02
<b>Train 1</b>								
Planned unavailable hours	14.62	17.93	9.50	3.75	10.47	8.05	10.56	21.53
Unplanned unavailable hours	3.00	0	0	0	32.35	2.03	15.04	0
Fault exposure hours	0	0	0	0	0	0	0	0
Effective Reset hours	0	0	0	0	0	0	0	0
Required hours	2160.00	2183.00	2208.00	2209.00	2160.00	2183.00	2208.00	2209.00
<b>Train 2</b>								
Planned unavailable hours	7.53	15.46	9.15	6.04	10.22	11.10	15.39	9.00
Unplanned unavailable hours	0	10.25	0	0	0	0	0	6.92
Fault exposure hours	0	0	0	0	0	0	0	0
Effective Reset hours	0	0	0	0	0	0	0	0
Required hours	2160.00	2183.00	2208.00	2209.00	2160.00	2183.00	2208.00	2209.00
<b>Indicator value</b>	<b>0.7%</b>	<b>0.7%</b>	<b>0.6%</b>	<b>0.6%</b>	<b>0.7%</b>	<b>0.7%</b>	<b>0.7%</b>	<b>0.7%</b>

Licensee Comments: none

### Safety System Unavailability, High Pressure Injection System (HPSI)



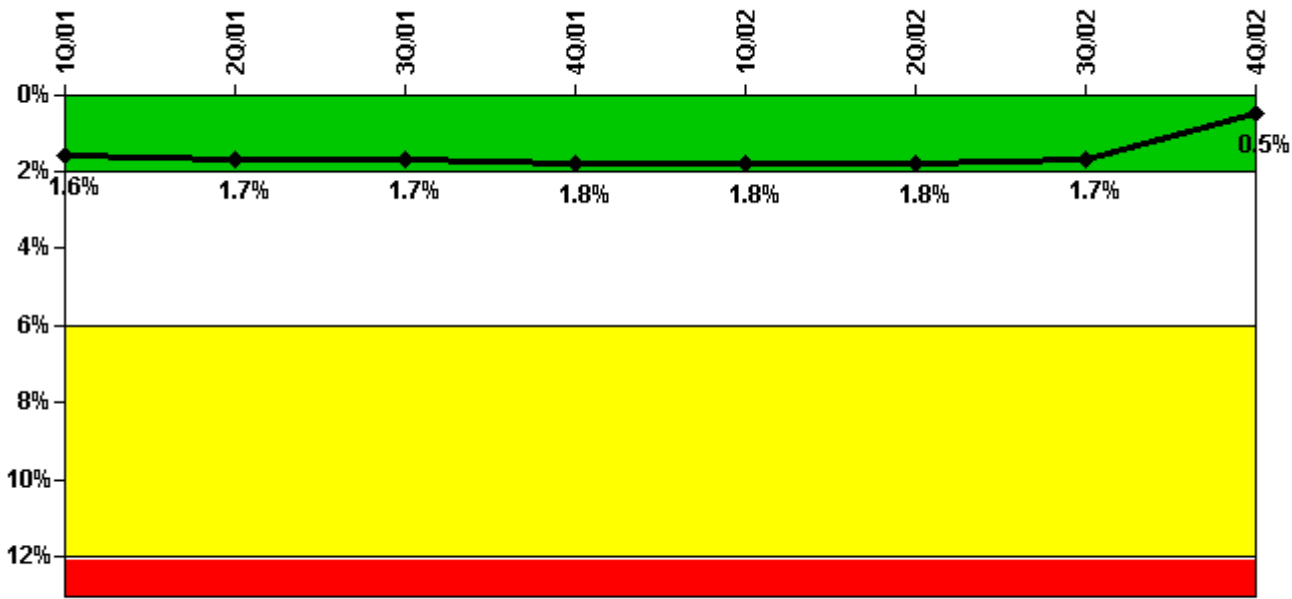
Thresholds: White > 1.5% Yellow > 5.0% Red > 10.0%

#### Notes

Safety System Unavailability, High Pressure Injection System (HPSI)	1Q/01	2Q/01	3Q/01	4Q/01	1Q/02	2Q/02	3Q/02	4Q/02
<b>Train 1</b>								
Planned unavailable hours	0.40	1.20	0	0	8.00	0.02	0.50	0.23
Unplanned unavailable hours	0	0	0	0	0	0	5.55	0
Fault exposure hours	0	0	0	0	0	0	0	0
Effective Reset hours	0	0	0	0	0	0	0	0
Required hours	2160.00	2152.70	2208.00	852.13	2160.00	2183.00	2208.00	2209.00
<b>Train 2</b>								
Planned unavailable hours	0	0.05	0.48	0	0.65	0.05	20.22	0
Unplanned unavailable hours	0	0	0	0	5.05	0	1.30	0
Fault exposure hours	0	0	0	0	0	0	6.97	0
Effective Reset hours	0	0	0	0	0	0	0	0
Required hours	2160.00	2152.70	2208.00	852.13	2160.00	2183.00	2208.00	2209.00
Indicator value	0.4%	0.4%	0.3%	0.3%	0.3%	0.2%	0.2%	0.2%

Licensee Comments: none

### Safety System Unavailability, Heat Removal System (AFW)



Thresholds: White > 2.0% Yellow > 6.0% Red > 12.0%

#### Notes

Safety System Unavailability, Heat Removal System (AFW)	1Q/01	2Q/01	3Q/01	4Q/01	1Q/02	2Q/02	3Q/02	4Q/02
<b>Train 1</b>								
Planned unavailable hours	49.10	16.41	13.71	6.37	9.37	13.56	14.44	23.52
Unplanned unavailable hours	14.75	0	2.44	0	0	14.34	0	0
Fault exposure hours	0	0	0	0	0	12.00	0	0
Effective Reset hours	0	0	0	0	0	0	0	0
Required hours	2160.00	2152.70	2208.00	852.13	2160.00	2183.00	2208.00	2209.00
<b>Train 2</b>								
Planned unavailable hours	4.19	13.99	4.97	4.75	0.33	0	0.42	5.07
Unplanned unavailable hours	0.18	0	50.66	0	0	0	0	0
Fault exposure hours	932.28	0	0	0	0	0	0	0
Effective Reset hours	0	0	0	0	0	0	0	932.28
Required hours	2160.00	2152.70	2208.00	852.13	2160.00	2183.00	2208.00	2209.00
<b>Train 3</b>								
Planned unavailable hours	1.83	31.43	3.26	0.45	0.22	0	0	0
Unplanned unavailable hours	0	0	0.40	0	0	0	0	0
Fault exposure hours	0	0	0	0	0	0	0	0
Effective Reset hours	0	0	0	0	0	0	0	0
Required hours	2160.00	2152.70	2208.00	852.13	2160.00	2183.00	2208.00	2209.00
<b>Indicator value</b>	<b>1.6%</b>	<b>1.7%</b>	<b>1.7%</b>	<b>1.8%</b>	<b>1.8%</b>	<b>1.8%</b>	<b>1.7%</b>	<b>0.5%</b>

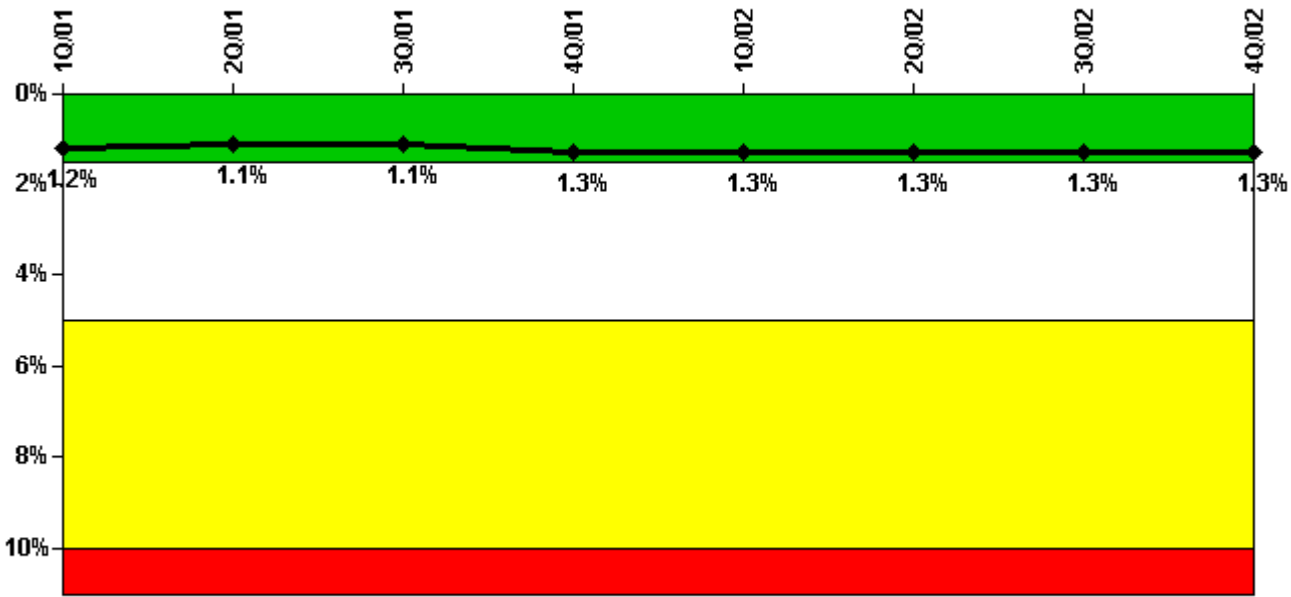
#### Licensee Comments:

1Q/01: The number of fault exposure hours for EFW Train 2 previously reported to the NRC on April 20, 2001 was based on LER 2001-001-00 and the inoperability period of 2/1-14/2001. The number of fault exposure unavailability hours is revised from 309.85 hours to 932.28 hours based on the inoperability period of 1/6-2/14/2001, which will be reported in the Supplemental LER 2001-001-01. The PI color is unchanged and remains GREEN. The number of planned unavailable hours for EFW Train 2 previously reported to the NRC on April 20, 2001 is revised from 4.38 hours to 4.19 hours. This is a result of re-classifying 0.19 hours from planned unavailability hours to fault exposure hours, also based on the inoperability period of 1/6-2/14/2001. 01/20/2003: 0.18 hours are being added to the data for the second train of EFW for January 2001 because it was originally included in Fault Exposure Hours, that are being reset in the 4th quarter 2002.

Effective Reset Comments:

4Q/02: Fault exposure hours for train 2 have been reset to 0 from their original value of 932.28 hours, pursuant to the acceptance criteria of the NEI 99-01 Rev guidance document. The following criteria were met: 1) Fault exposure hours being reset were greater than 336 hours (932.28 hours). 2) Four quarters have passed since the event (1st qtr 2001) resulting in the fault exposure hours. 3) The PI crossed into the white region or the finding related to the event was classified as "white" (the finding 05000289/2001-002 was classified as "white"). 4) Corrective actions to preclude recurrence have been completed (Dec 2002). 5) NRC Supplemental Inspection Report, dated March 1, 2002 did not result in any new open items requiring follow-up activity.

### Safety System Unavailability, Residual Heat Removal System



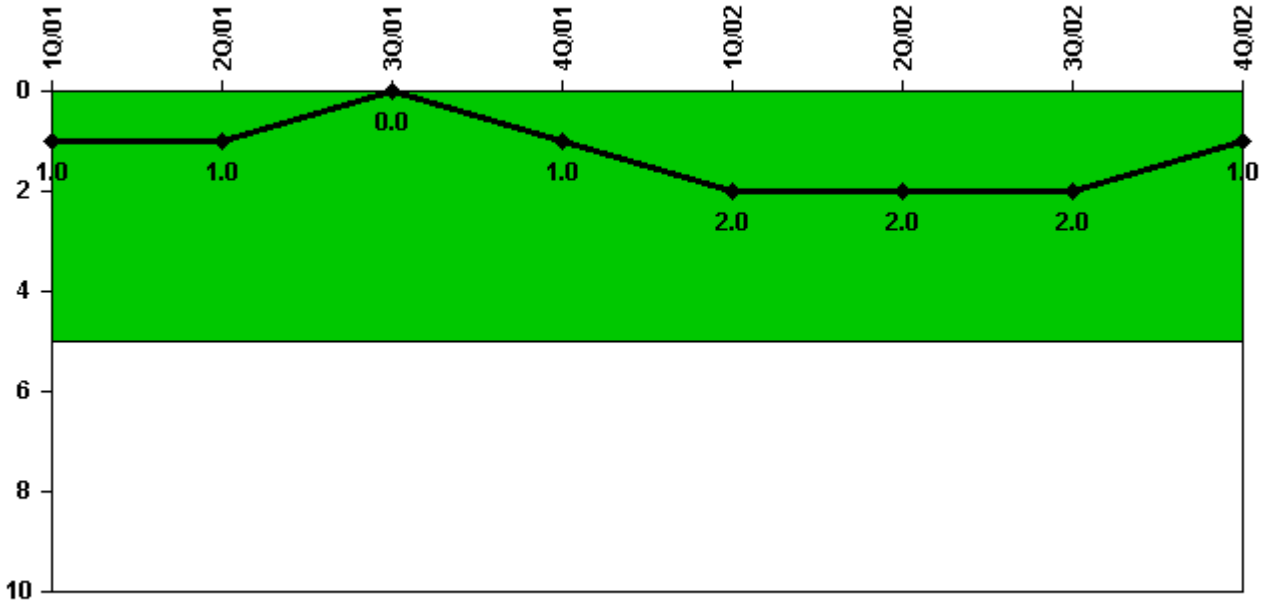
Thresholds: White > 1.5% Yellow > 5.0% Red > 10.0%

Notes

Safety System Unavailability, Residual Heat Removal System	1Q/01	2Q/01	3Q/01	4Q/01	1Q/02	2Q/02	3Q/02	4Q/02
<b>Train 1</b>								
Planned unavailable hours	12.02	13.90	35.79	10.30	20.72	61.06	24.32	2.27
Unplanned unavailable hours	4.57	0	0	35.25	0	0.10	0	0
Fault exposure hours	0	0	0	0	0	0	0	0
Effective Reset hours	0	0	0	0	0	0	0	0
Required hours	2160.00	2183.00	2208.00	2170.02	2160.00	2183.00	2208.00	2209.00
<b>Train 2</b>								
Planned unavailable hours	9.53	12.57	34.44	7.91	35.65	22.83	42.55	1.30
Unplanned unavailable hours	0	0	0	82.33	0	0	10.48	0
Fault exposure hours	0	0	0	0	0	0	6.97	0
Effective Reset hours	0	0	0	0	0	0	0	0
Required hours	2160.00	2183.00	2208.00	2170.02	2160.00	2183.00	2208.00	2209.00
<b>Indicator value</b>	1.2%	1.1%	1.1%	1.3%	1.3%	1.3%	1.3%	1.3%

Licensee Comments: none

### Safety System Functional Failures (PWR)



Thresholds: White > 5.0

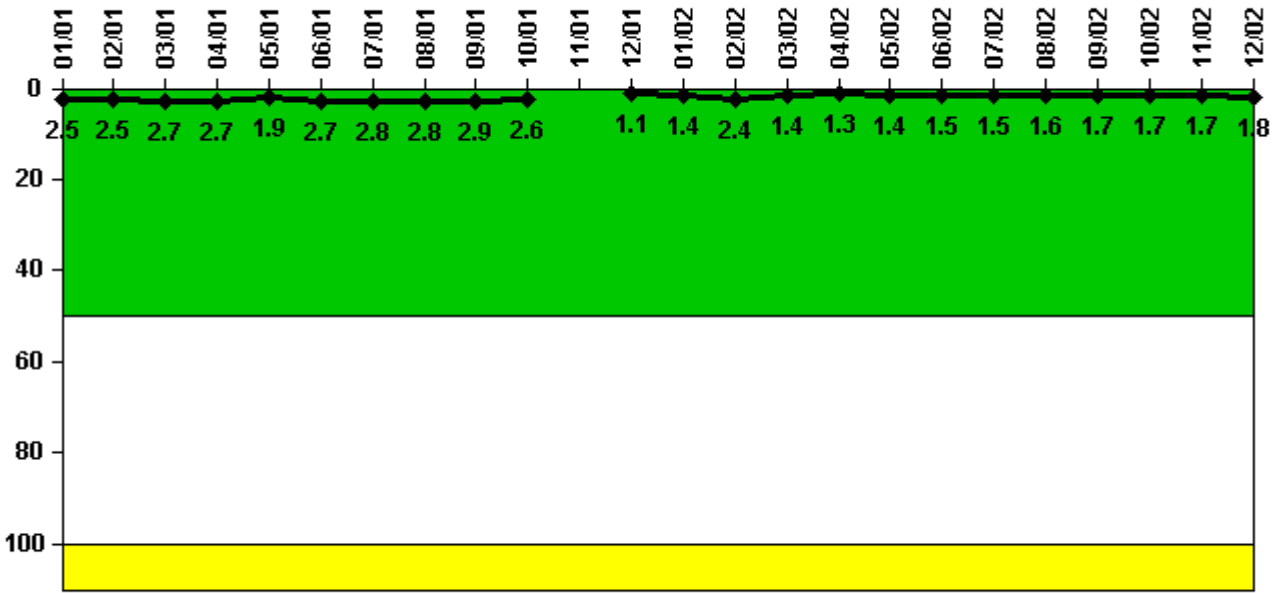
### Notes

Safety System Functional Failures (PWR)	1Q/01	2Q/01	3Q/01	4Q/01	1Q/02	2Q/02	3Q/02	4Q/02
Safety System Functional Failures	0	0	0	1	1	0	0	0
Indicator value	1	1	0	1	2	2	2	1

Licensee Comments: none



### Reactor Coolant System Activity



Thresholds: White > 50.0 Yellow > 100.0

#### Notes

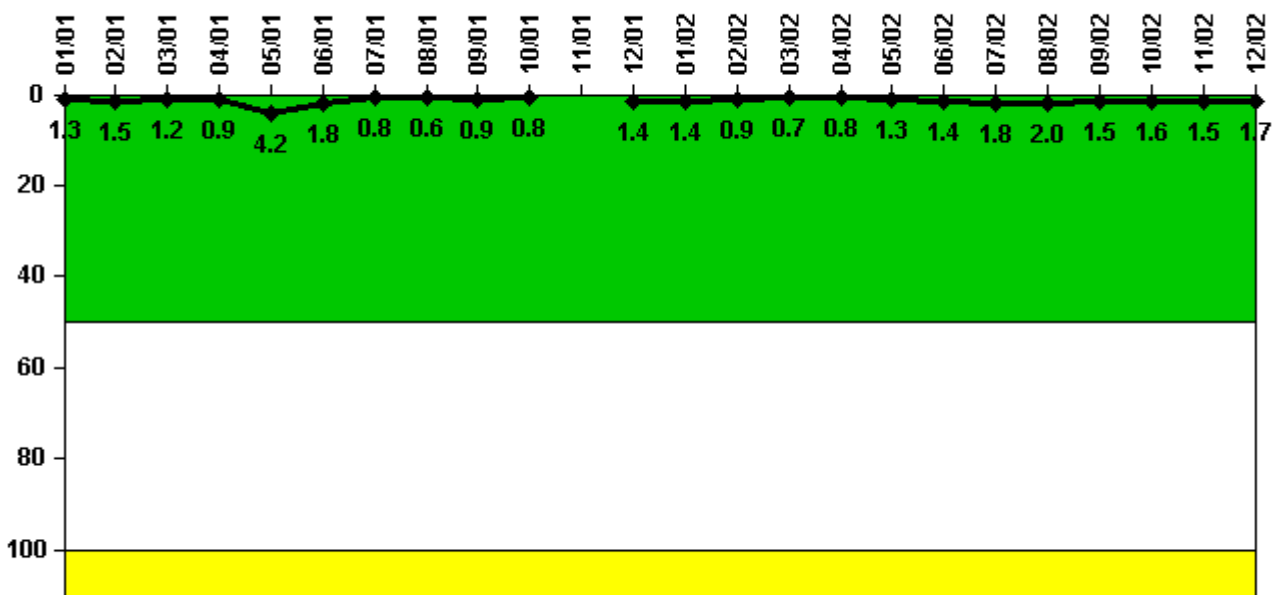
Reactor Coolant System Activity	1/01	2/01	3/01	4/01	5/01	6/01	7/01	8/01	9/01	10/01	11/01	12/01
Maximum activity	0.008760	0.008790	0.009280	0.009330	0.006800	0.009600	0.009800	0.009640	0.010000	0.009110	N/A	0.003710
Technical specification limit	0.4	0.4	0.4	0.4	0.4	0.4	0.4	0.4	0.4	0.4	0.4	0.4
Indicator value	2.5	2.5	2.7	2.7	1.9	2.7	2.8	2.8	2.9	2.6	N/A	1.1

Reactor Coolant System Activity	1/02	2/02	3/02	4/02	5/02	6/02	7/02	8/02	9/02	10/02	11/02	12/02
Maximum activity	0.004750	0.008440	0.005020	0.004720	0.004870	0.005110	0.005340	0.005680	0.005920	0.005810	0.006040	0.006230
Technical specification limit	0.4	0.4	0.4	0.4	0.4	0.4	0.4	0.4	0.4	0.4	0.4	0.4
Indicator value	1.4	2.4	1.4	1.3	1.4	1.5	1.5	1.6	1.7	1.7	1.7	1.8

Licensee Comments: none

### Reactor Coolant System Leakage



Thresholds: White > 50.0 Yellow > 100.0

#### Notes

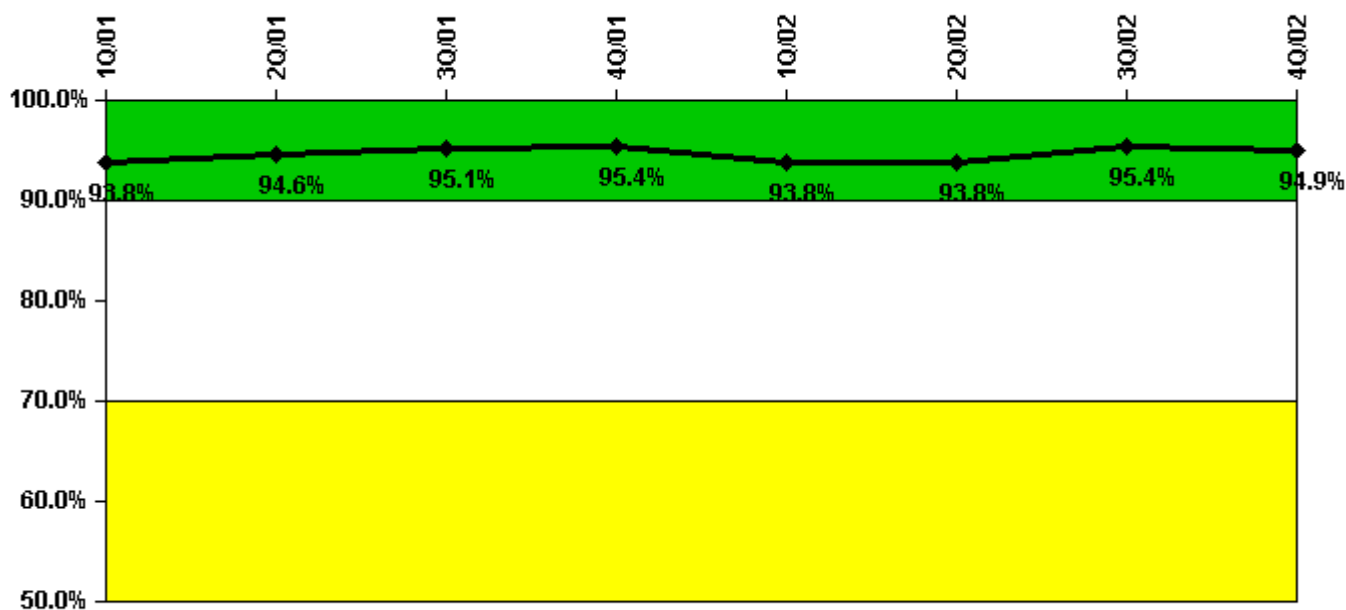
Reactor Coolant System Leakage	1/01	2/01	3/01	4/01	5/01	6/01	7/01	8/01	9/01	10/01	11/01	12/01
Maximum leakage	0.130	0.148	0.118	0.092	0.420	0.178	0.076	0.061	0.093	0.078	N/A	0.142
Technical specification limit	10.0	10.0	10.0	10.0	10.0	10.0	10.0	10.0	10.0	10.0	10.0	10.0
Indicator value	1.3	1.5	1.2	0.9	4.2	1.8	0.8	0.6	0.9	0.8	N/A	1.4

Reactor Coolant System Leakage	1/02	2/02	3/02	4/02	5/02	6/02	7/02	8/02	9/02	10/02	11/02	12/02
Maximum leakage	0.143	0.093	0.068	0.082	0.126	0.144	0.180	0.200	0.150	0.157	0.147	0.175
Technical specification limit	10.0	10.0	10.0	10.0	10.0	10.0	10.0	10.0	10.0	10.0	10.0	10.0
Indicator value	1.4	0.9	0.7	0.8	1.3	1.4	1.8	2.0	1.5	1.6	1.5	1.7

Licensee Comments: none

### Drill/Exercise Performance



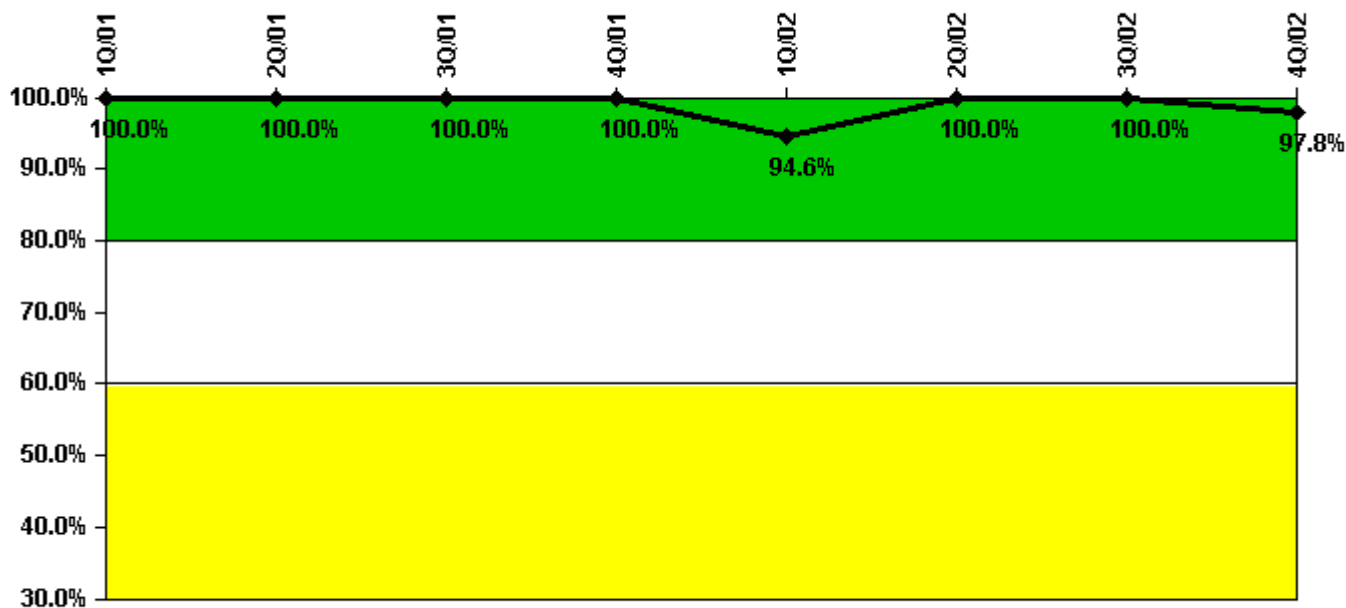
Thresholds: White < 90.0% Yellow < 70.0%

#### Notes

Drill/Exercise Performance	1Q/01	2Q/01	3Q/01	4Q/01	1Q/02	2Q/02	3Q/02	4Q/02
Successful opportunities	16.0	21.0	16.0	0	7.0	9.0	23.0	2.0
Total opportunities	17.0	22.0	16.0	0	8.0	10.0	24.0	2.0
Indicator value	93.8%	94.6%	95.1%	95.4%	93.8%	93.8%	95.4%	94.9%

Licensee Comments: none

### ERO Drill Participation



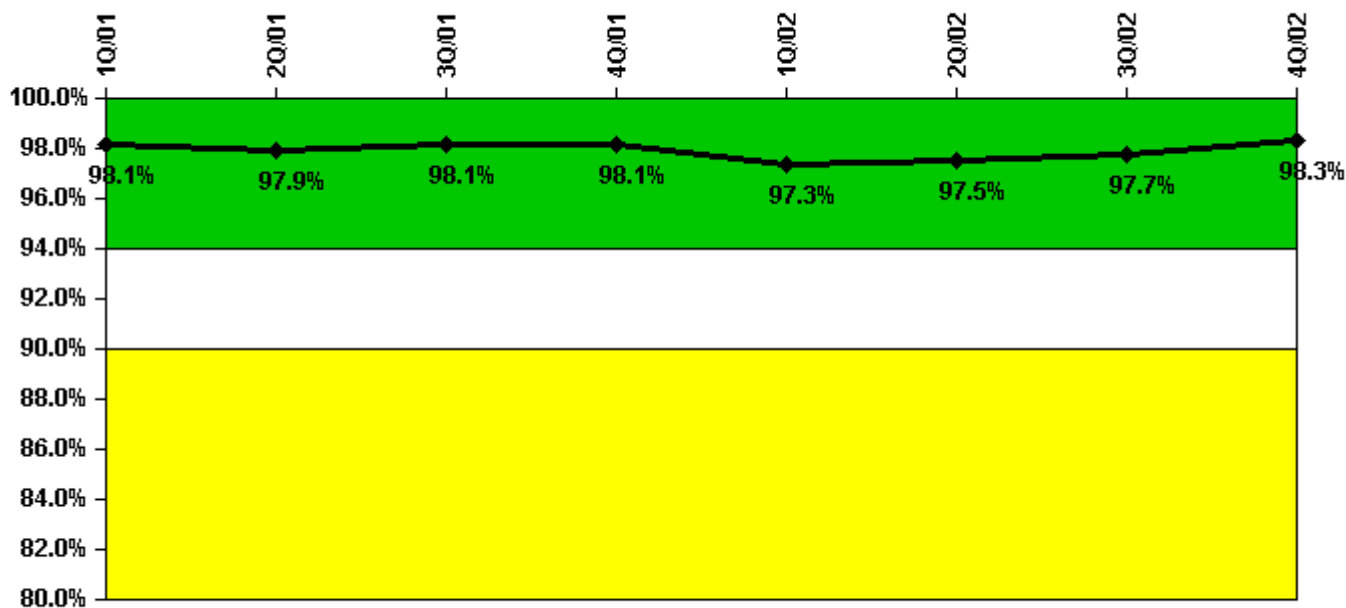
Thresholds: White < 80.0% Yellow < 60.0%

#### Notes

ERO Drill Participation	1Q/01	2Q/01	3Q/01	4Q/01	1Q/02	2Q/02	3Q/02	4Q/02
Participating Key personnel	45.0	45.0	42.0	39.0	35.0	36.0	43.0	44.0
Total Key personnel	45.0	45.0	42.0	39.0	37.0	36.0	43.0	45.0
Indicator value	100.0%	100.0%	100.0%	100.0%	94.6%	100.0%	100.0%	97.8%

Licensee Comments: none

### Alert & Notification System



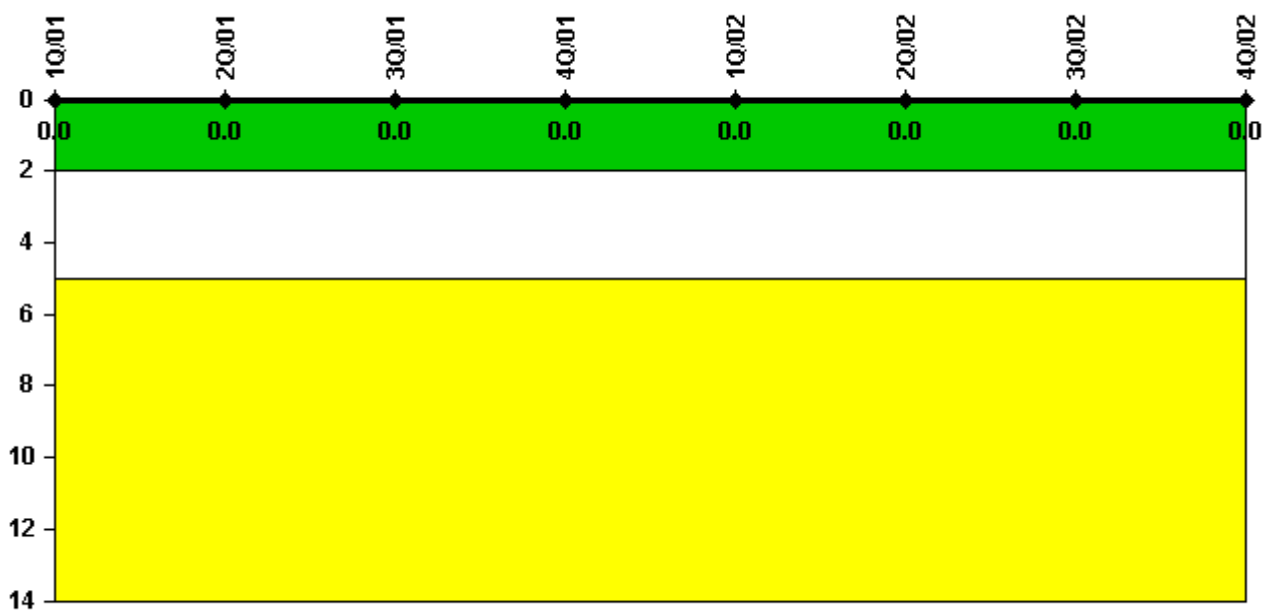
Thresholds: White < 94.0% Yellow < 90.0%

#### Notes

Alert & Notification System	1Q/01	2Q/01	3Q/01	4Q/01	1Q/02	2Q/02	3Q/02	4Q/02
Successful siren-tests	623	855	1090	1152	1055	1095	1176	1022
Total sirens-tests	632	869	1106	1185	1106	1106	1185	1027
Indicator value	98.1%	97.9%	98.1%	98.1%	97.3%	97.5%	97.7%	98.3%

Licensee Comments: none

### Occupational Exposure Control Effectiveness



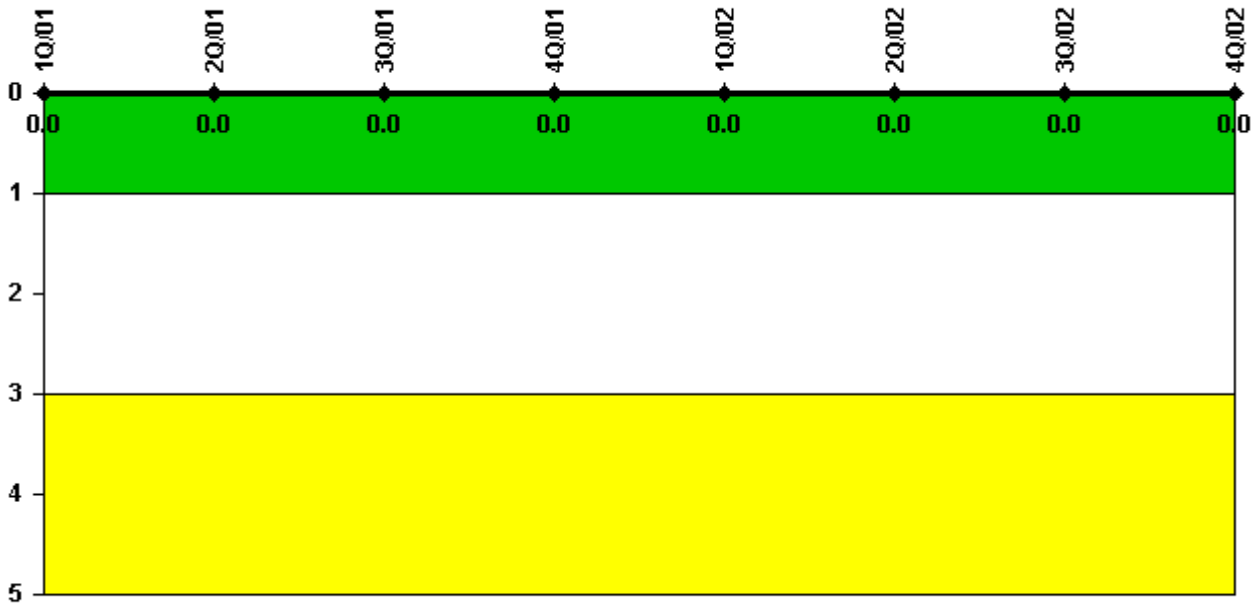
Thresholds: White > 2.0 Yellow > 5.0

#### Notes

Occupational Exposure Control Effectiveness	1Q/01	2Q/01	3Q/01	4Q/01	1Q/02	2Q/02	3Q/02	4Q/02
High radiation area occurrences	0	0	0	0	0	0	0	0
Very high radiation area occurrences	0	0	0	0	0	0	0	0
Unintended exposure occurrences	0	0	0	0	0	0	0	0
Indicator value	0	0	0	0	0	0	0	0

Licensee Comments: none

### RETS/ODCM Radiological Effluent



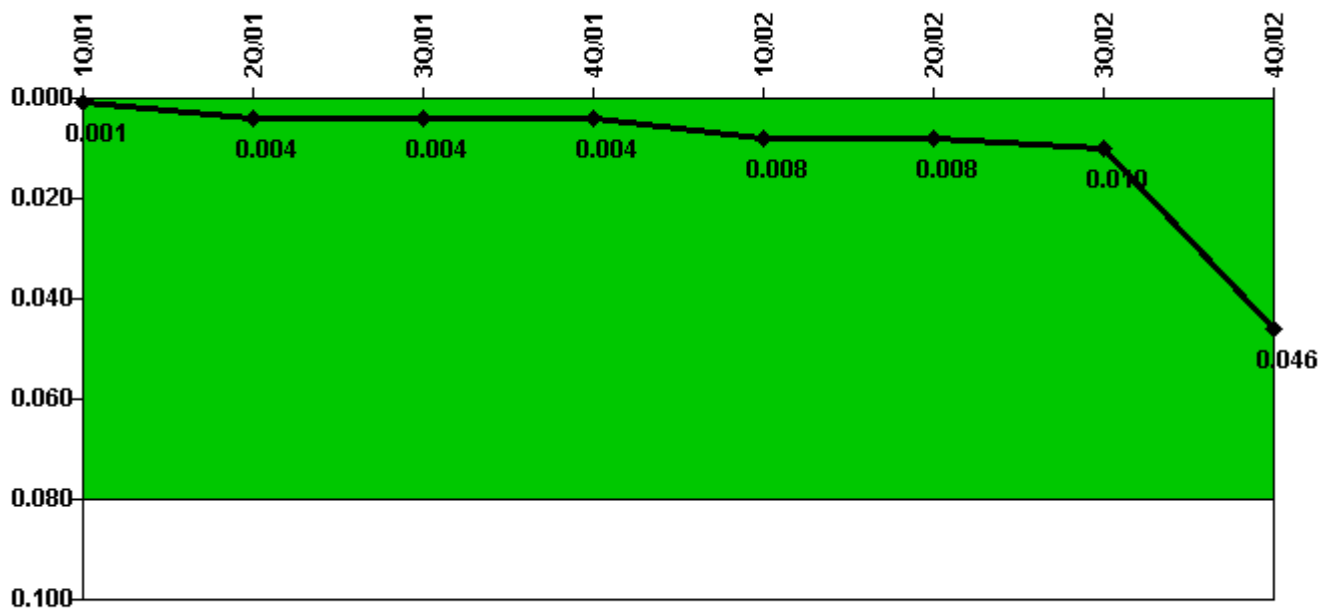
Thresholds: White > 1.0 Yellow > 3.0

**Notes**

RETS/ODCM Radiological Effluent	1Q/01	2Q/01	3Q/01	4Q/01	1Q/02	2Q/02	3Q/02	4Q/02
RETS/ODCM occurrences	0	0	0	0	0	0	0	0
Indicator value	0	0	0	0	0	0	0	0

Licensee Comments: none

### Protected Area Security Performance Index



Thresholds: White > 0.080

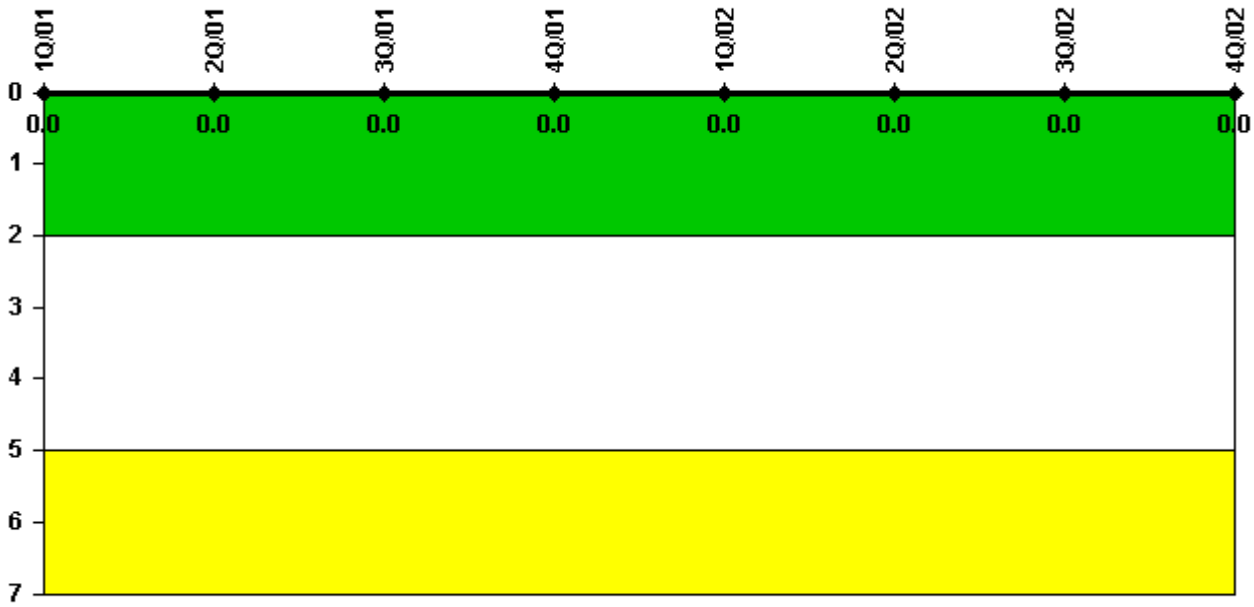
#### Notes

Protected Area Security Performance Index	1Q/01	2Q/01	3Q/01	4Q/01	1Q/02	2Q/02	3Q/02	4Q/02
IDS compensatory hours	0	56.73	16.55	0	96.07	53.55	60.25	804.06
CCTV compensatory hours	0	6.3	0	0	0	1.2	0	0
IDS normalization factor	1.25	1.25	1.25	1.25	1.25	1.25	1.25	1.25
CCTV normalization factor	1.0	1.0	1.0	1.0	1.0	1.0	1.0	1.0
<b>Index Value</b>	<b>0.001</b>	<b>0.004</b>	<b>0.004</b>	<b>0.004</b>	<b>0.008</b>	<b>0.008</b>	<b>0.010</b>	<b>0.046</b>

Licensee Comments: none



### Personnel Screening Program



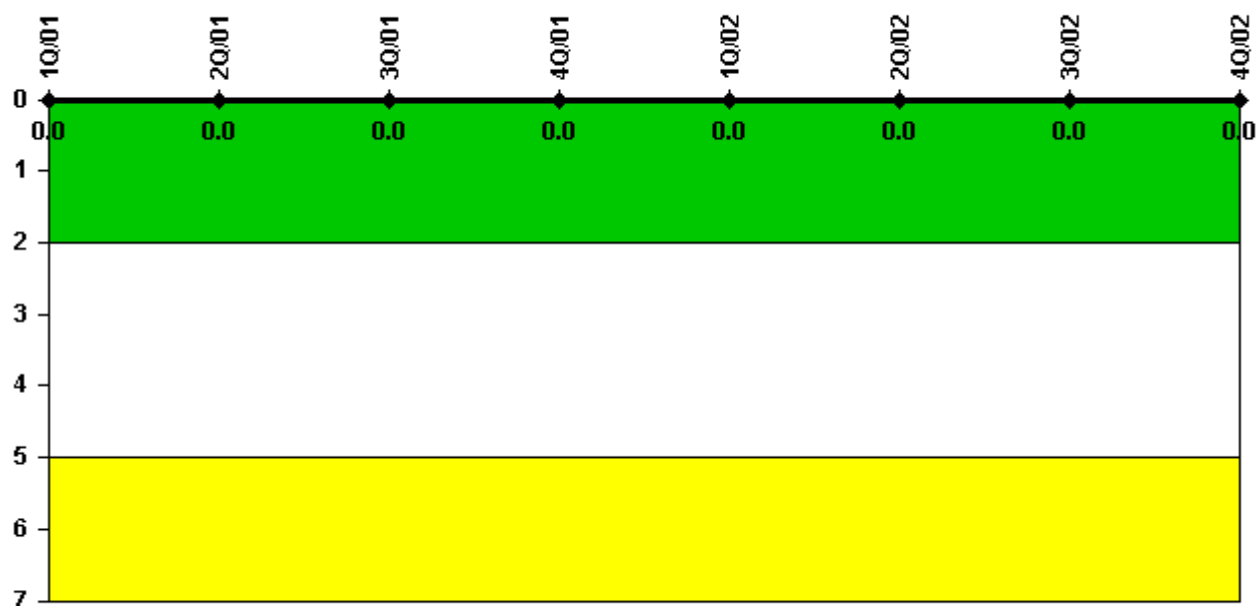
Thresholds: White > 2.0 Yellow > 5.0

#### Notes

Personnel Screening Program	1Q/01	2Q/01	3Q/01	4Q/01	1Q/02	2Q/02	3Q/02	4Q/02
Program failures	0	0	0	0	0	0	0	0
Indicator value	0	0	0	0	0	0	0	0

Licensee Comments: none

### FFD/Personnel Reliability



Thresholds: White > 2.0 Yellow > 5.0

#### Notes

FFD/Personnel Reliability	1Q/01	2Q/01	3Q/01	4Q/01	1Q/02	2Q/02	3Q/02	4Q/02
Program Failures	0	0	0	0	0	0	0	0
Indicator value	0	0	0	0	0	0	0	0

Licensee Comments: none

▲ [PI Summary](#) | [Inspection Findings Summary](#) | [Reactor Oversight Process](#)

Last Modified: January 30, 2003