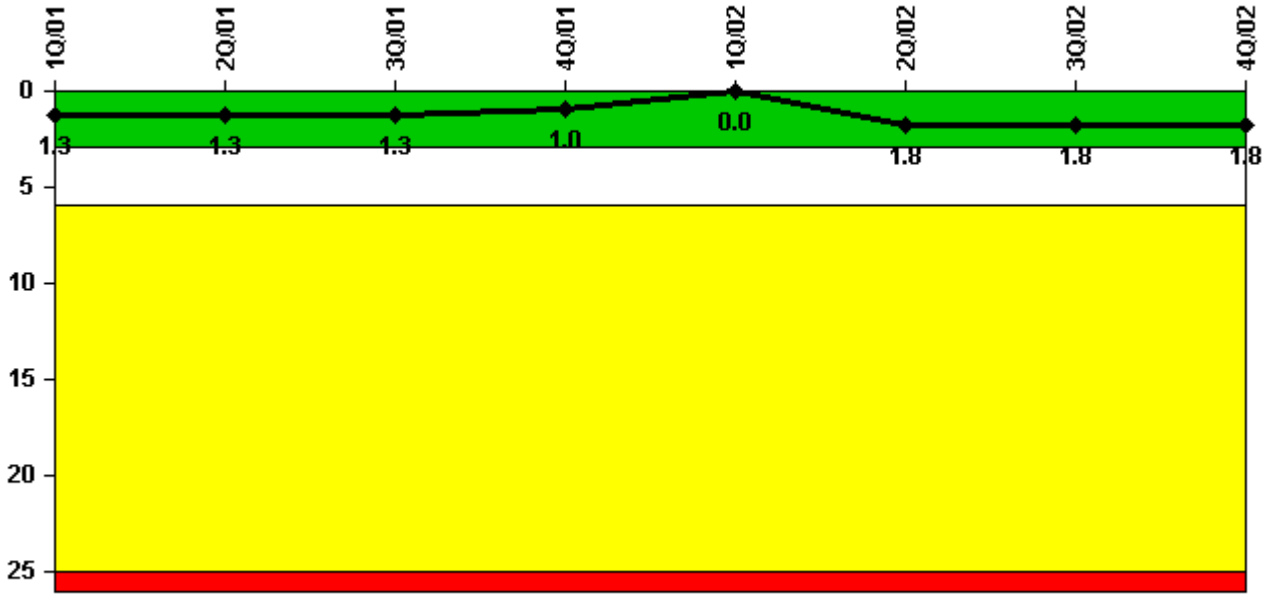


Summer

4Q/2002 Performance Indicators

Licensee's General Comments: none

Unplanned Scrams per 7000 Critical Hrs



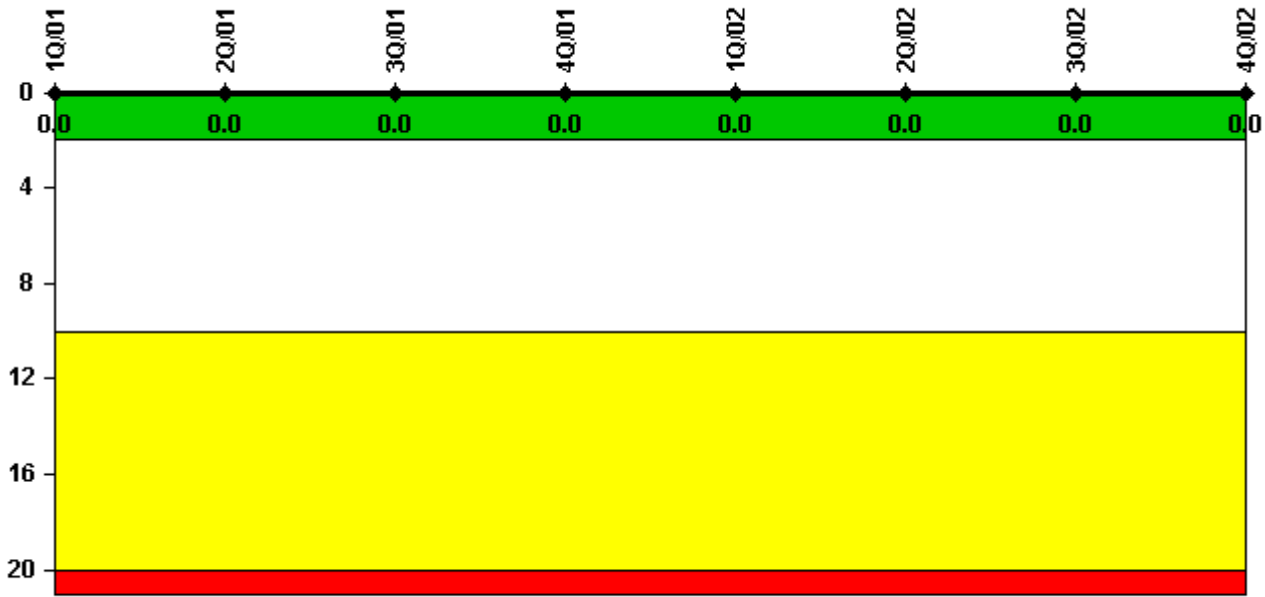
Thresholds: White > 3.0 Yellow > 6.0 Red > 25.0

Notes

Unplanned Scrams per 7000 Critical Hrs	1Q/01	2Q/01	3Q/01	4Q/01	1Q/02	2Q/02	3Q/02	4Q/02
Unplanned scrams	1.0	0	0	0	0	2.0	0	0
Critical hours	737.9	2183.0	2208.0	2209.0	2160.0	1123.0	2208.0	2209.0
Indicator value	1.3	1.3	1.3	1.0	0	1.8	1.8	1.8

Licensee Comments: none

Scrams with Loss of Normal Heat Removal



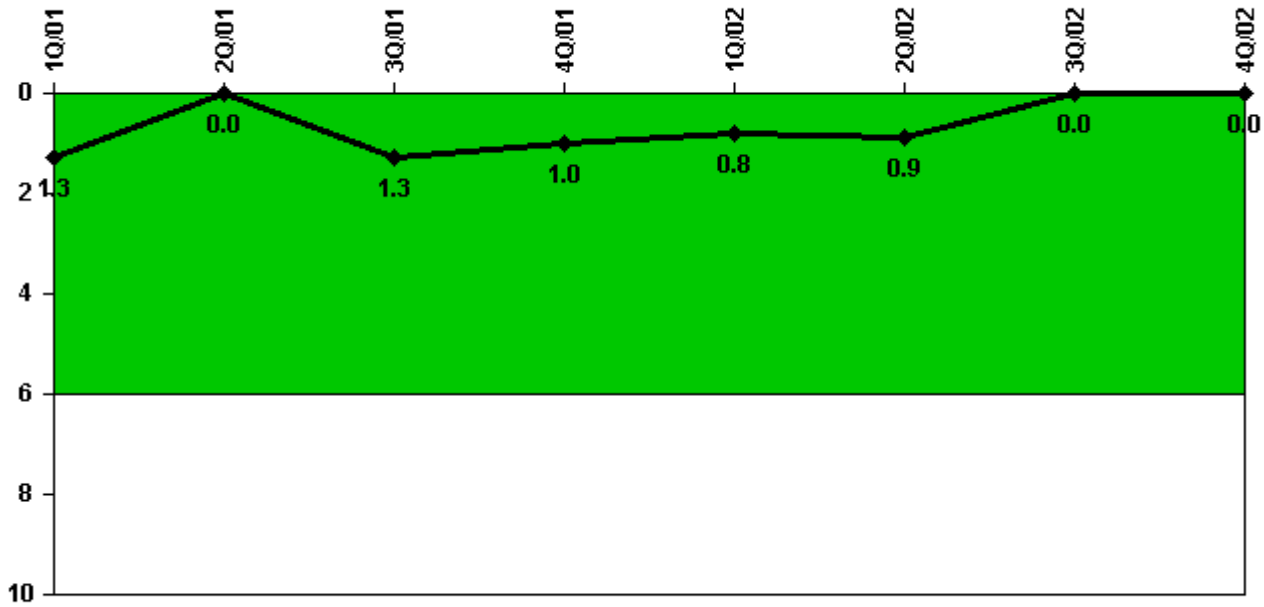
Thresholds: White > 2.0 Yellow > 10.0 Red > 20.0

Notes

Scrams with Loss of Normal Heat Removal	1Q/01	2Q/01	3Q/01	4Q/01	1Q/02	2Q/02	3Q/02	4Q/02
Scrams	0	0	0	0	0	0	0	0
Indicator value	0	0	0	0	0	0	0	0

Licensee Comments: none

Unplanned Power Changes per 7000 Critical Hrs



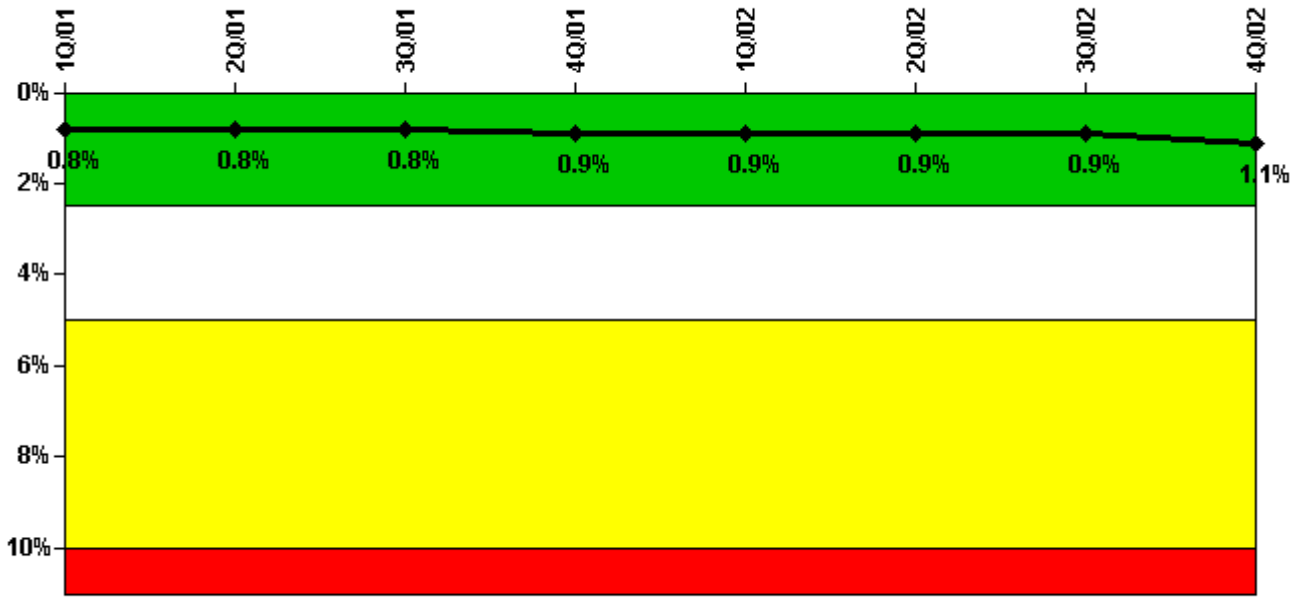
Thresholds: White > 6.0

Notes

Unplanned Power Changes per 7000 Critical Hrs	1Q/01	2Q/01	3Q/01	4Q/01	1Q/02	2Q/02	3Q/02	4Q/02
Unplanned power changes	0	0	1.0	0	0	0	0	0
Critical hours	737.9	2183.0	2208.0	2209.0	2160.0	1123.0	2208.0	2209.0
Indicator value	1.3	0	1.3	1.0	0.8	0.9	0	0

Licensee Comments: none

Safety System Unavailability, Emergency AC Power



Thresholds: White > 2.5% Yellow > 5.0% Red > 10.0%

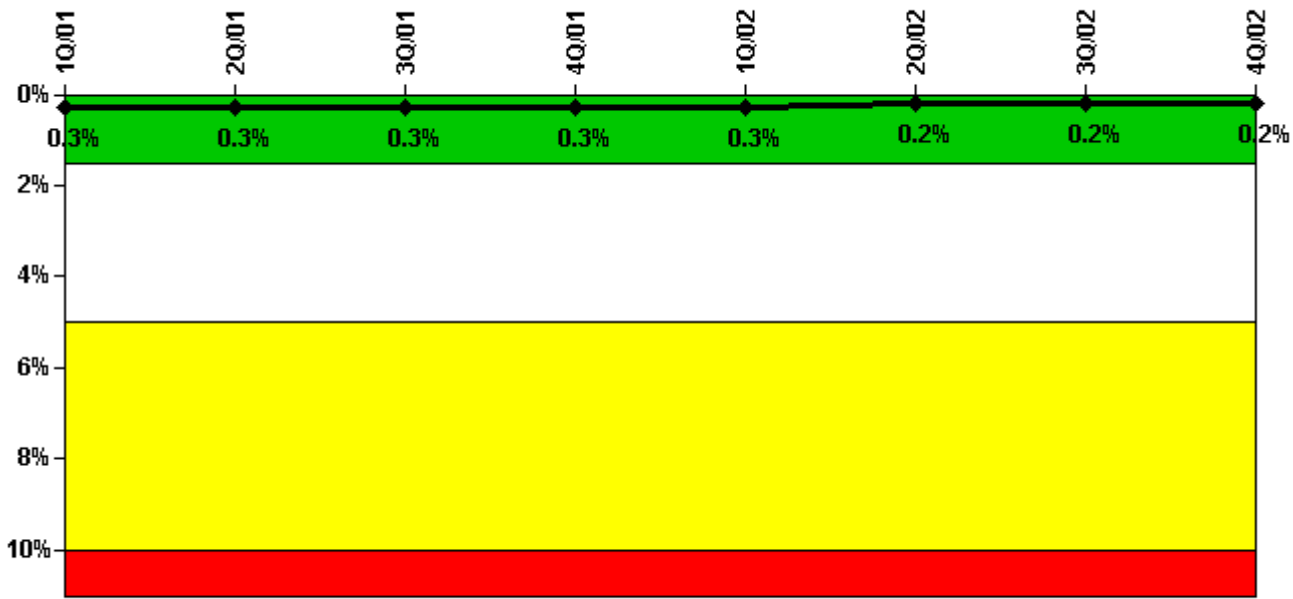
Notes

Safety System Unavailability, Emergency AC Power	1Q/01	2Q/01	3Q/01	4Q/01	1Q/02	2Q/02	3Q/02	4Q/02
Train 1								
Planned unavailable hours	8.20	20.90	18.50	17.50	12.60	0.40	13.60	30.30
Unplanned unavailable hours	0	0	0	5.10	0	0	42.30	21.80
Fault exposure hours	0	0	0	0	0	0	0	0
Effective Reset hours	0	0	0	0	0	0	0	0
Required hours	1168.40	2183.00	2208.00	2209.00	2160.00	2183.00	2208.00	2209.00
Train 2								
Planned unavailable hours	18.70	15.40	17.50	66.10	12.90	0.40	15.10	13.70
Unplanned unavailable hours	0	0	0	0	0	0	0	0
Fault exposure hours	0	0	0	0	0	0	0	0
Effective Reset hours	0	0	0	0	0	0	0	0
Required hours	894.80	2183.00	2208.00	2209.00	2160.00	2183.00	2208.00	2209.00
Indicator value	0.8%	0.8%	0.8%	0.9%	0.9%	0.9%	0.9%	1.1%

Licensee Comments:

4Q/02: EDG train A, 352 hours of T/2 fault exposure hours.

Safety System Unavailability, High Pressure Injection System (HPSI)



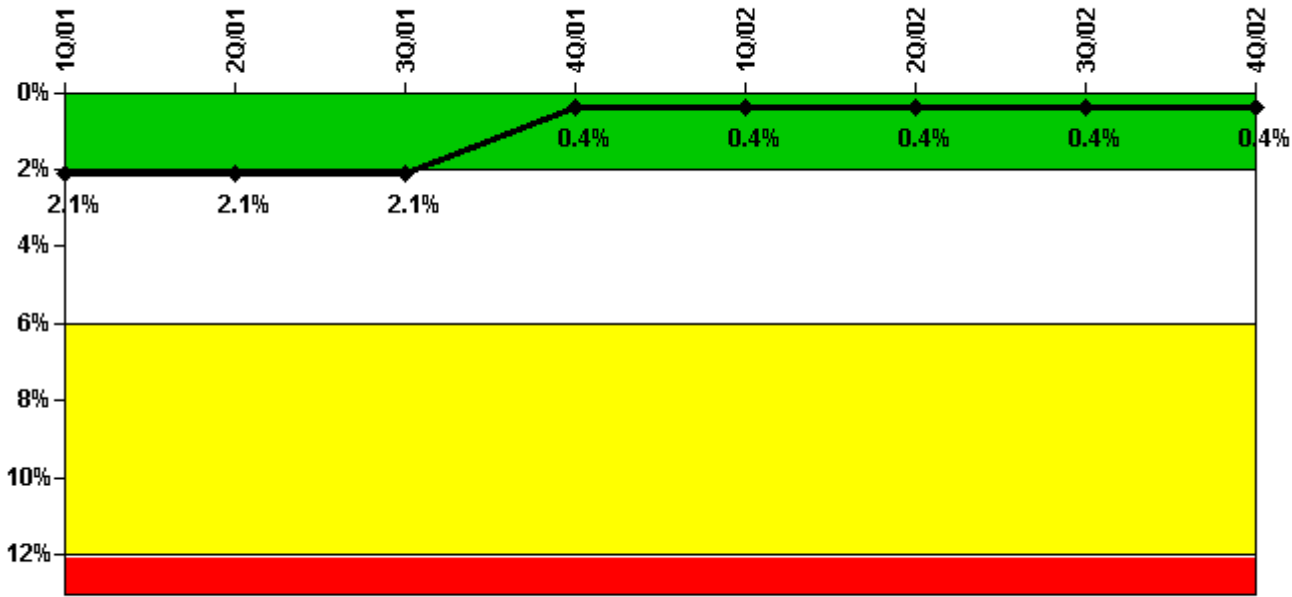
Thresholds: White > 1.5% Yellow > 5.0% Red > 10.0%

Notes

Safety System Unavailability, High Pressure Injection System (HPSI)	1Q/01	2Q/01	3Q/01	4Q/01	1Q/02	2Q/02	3Q/02	4Q/02
Train 1								
Planned unavailable hours	0	0.25	0.25	0.50	0.50	0.50	0.25	0.25
Unplanned unavailable hours	0	0	0	0	0	0	0	0
Fault exposure hours	0	0	0	0	0	0	0	0
Effective Reset hours	0	0	0	0	0	0	0	0
Required hours	737.90	2140.50	2208.00	2209.00	2160.00	1123.00	2208.00	2209.00
Train 2								
Planned unavailable hours	0	0.25	0.50	0.25	0.50	0.25	3.25	0.25
Unplanned unavailable hours	0	0	0	0	0	0	0	0
Fault exposure hours	0	0	0	0	0	0	0	0
Effective Reset hours	0	0	0	0	0	0	0	0
Required hours	737.90	2140.50	2208.00	2209.00	2160.00	1123.00	2208.00	2209.00
Indicator value	0.3%	0.3%	0.3%	0.3%	0.3%	0.2%	0.2%	0.2%

Licensee Comments: none

Safety System Unavailability, Heat Removal System (AFW)



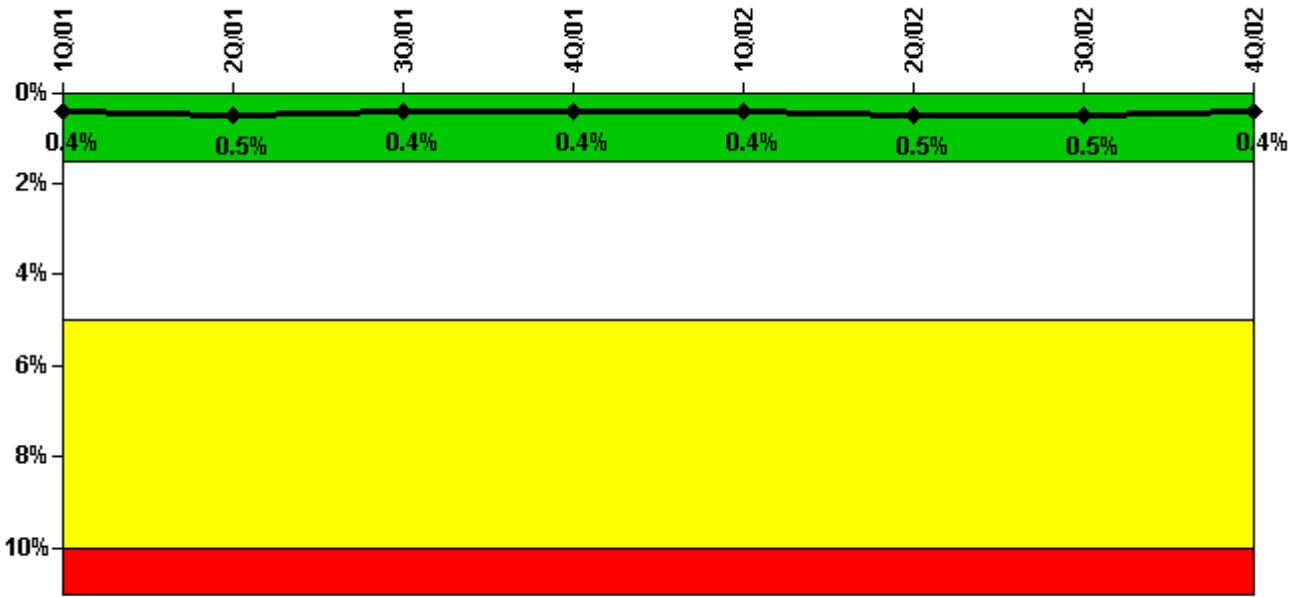
Thresholds: White > 2.0% Yellow > 6.0% Red > 12.0%

Notes

Safety System Unavailability, Heat Removal System (AFW)	1Q/01	2Q/01	3Q/01	4Q/01	1Q/02	2Q/02	3Q/02	4Q/02
Train 1								
Planned unavailable hours	0	8.20	20.30	23.30	9.50	3.30	12.20	0
Unplanned unavailable hours	0	0	0	0	0	0	0	0
Fault exposure hours	0	0	0	0	0	0	0	0
Effective Reset hours	0	0	0	0	0	0	0	0
Required hours	737.90	2183.00	2208.00	2209.00	2160.00	1123.00	2208.00	2209.00
Train 2								
Planned unavailable hours	0	7.80	18.50	0	0	14.50	10.80	0
Unplanned unavailable hours	0	0	0	0	0	0	0	0
Fault exposure hours	0	0	0	0	0	0	0	0
Effective Reset hours	0	0	0	0	0	0	0	0
Required hours	737.90	2183.00	2208.00	2209.00	2160.00	1123.00	2208.00	2209.00
Train 3								
Planned unavailable hours	0	9.10	0	16.30	11.20	18.60	0	11.90
Unplanned unavailable hours	0	0	0	0	0	0	0	0
Fault exposure hours	0	0	0	0	0	0	0	0
Effective Reset hours	0	0	0	1157.00	0	0	0	0
Required hours	737.90	2183.00	2208.00	2209.00	2160.00	1123.00	2208.00	2209.00
Indicator value	2.1%	2.1%	2.1%	0.4%	0.4%	0.4%	0.4%	0.4%

Licensee Comments: none

Safety System Unavailability, Residual Heat Removal System



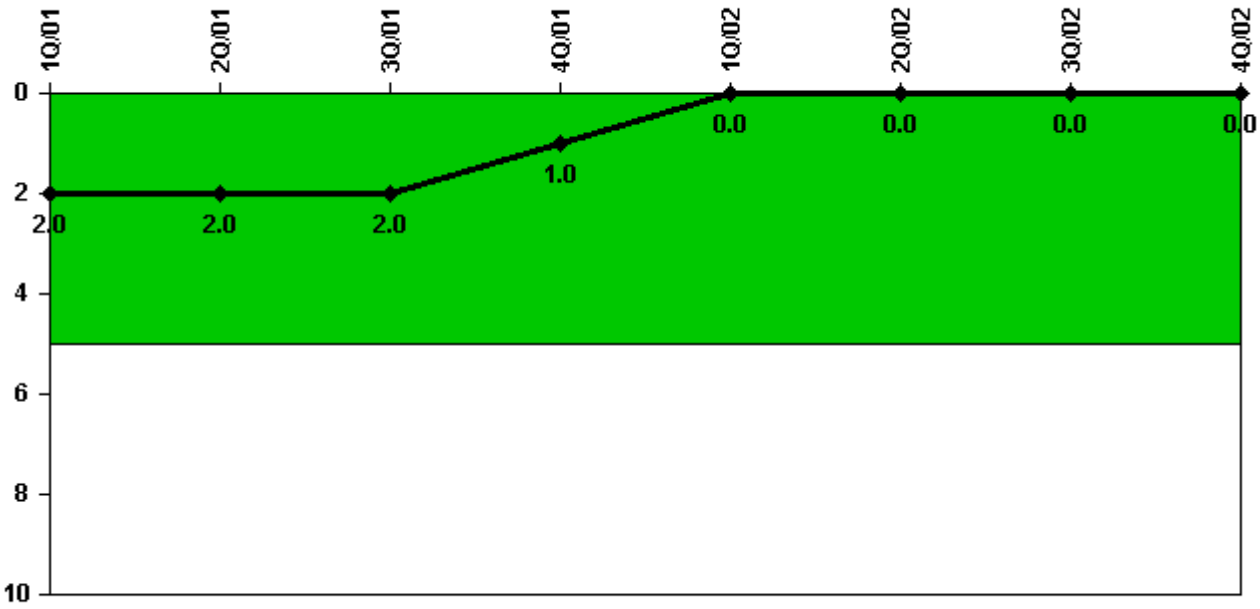
Thresholds: White > 1.5% Yellow > 5.0% Red > 10.0%

Notes

Safety System Unavailability, Residual Heat Removal System	1Q/01	2Q/01	3Q/01	4Q/01	1Q/02	2Q/02	3Q/02	4Q/02
Train 1								
Planned unavailable hours	0	13.50	12.50	8.10	15.70	35.10	10.90	8.80
Unplanned unavailable hours	0	0	0	0	0	0	0	0
Fault exposure hours	0	0	0	0	0	0	0	0
Effective Reset hours	0	0	0	0	0	0	0	0
Required hours	1168.40	2183.00	2208.00	2209.00	2160.00	2183.00	2208.00	2209.00
Train 2								
Planned unavailable hours	0.25	14.70	0	10.00	11.40	8.00	15.20	10.00
Unplanned unavailable hours	0	0	0	0	0	0	0	0
Fault exposure hours	0	0	0	0	0	0	0	0
Effective Reset hours	0	0	0	0	0	0	0	0
Required hours	1168.40	2183.00	2208.00	2209.00	2160.00	2183.00	2208.00	2209.00
Indicator value	0.4%	0.5%	0.4%	0.4%	0.4%	0.5%	0.5%	0.4%

Licensee Comments: none

Safety System Functional Failures (PWR)



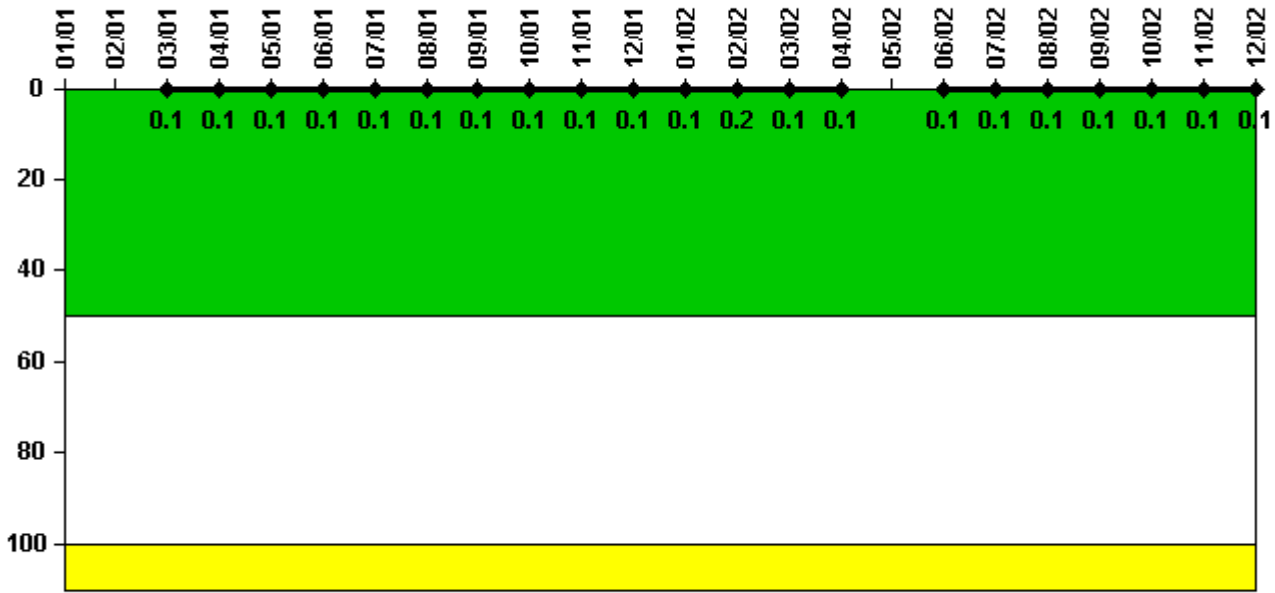
Thresholds: White > 5.0

Notes

Safety System Functional Failures (PWR)	1Q/01	2Q/01	3Q/01	4Q/01	1Q/02	2Q/02	3Q/02	4Q/02
Safety System Functional Failures	1	0	0	0	0	0	0	0
Indicator value	2	2	2	1	0	0	0	0

Licensee Comments: none

Reactor Coolant System Activity



Thresholds: White > 50.0 Yellow > 100.0

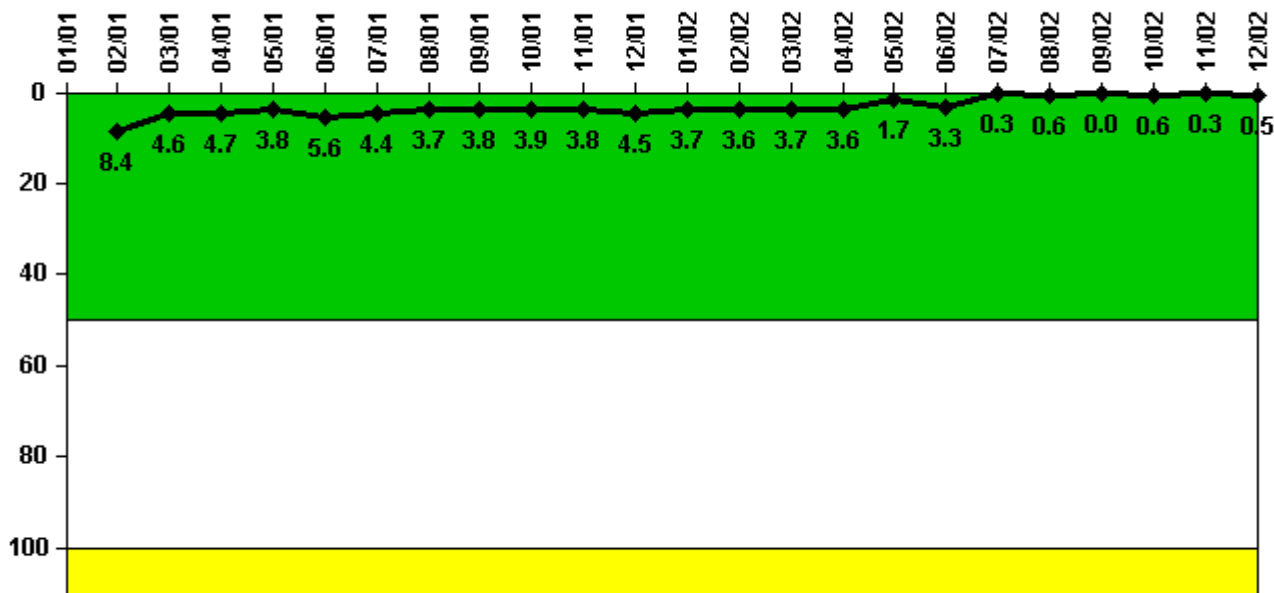
Notes

Reactor Coolant System Activity	1/01	2/01	3/01	4/01	5/01	6/01	7/01	8/01	9/01	10/01	11/01	12/01
Maximum activity	N/A	N/A	0.000245	0.000281	0.000276	0.000275	0.000290	0.000362	0.000314	0.000340	0.000341	0.000360
Technical specification limit	0.4	0.4	0.4	0.4	0.4	0.4	0.4	0.4	0.4	0.4	0.4	0.4
Indicator value	N/A	N/A	0.1	0.1	0.1	0.1	0.1	0.1	0.1	0.1	0.1	0.1

Reactor Coolant System Activity	1/02	2/02	3/02	4/02	5/02	6/02	7/02	8/02	9/02	10/02	11/02	12/02
Maximum activity	0.000363	0.000680	0.000384	0.000386	N/A	0.000216	0.000228	0.000234	0.000253	0.000260	0.000269	0.000281
Technical specification limit	0.4	0.4	0.4	0.4	0.4	0.4	0.4	0.4	0.4	0.4	0.4	0.4
Indicator value	0.1	0.2	0.1	0.1	N/A	0.1	0.1	0.1	0.1	0.1	0.1	0.1

Licensee Comments: none

Reactor Coolant System Leakage



Thresholds: White > 50.0 Yellow > 100.0

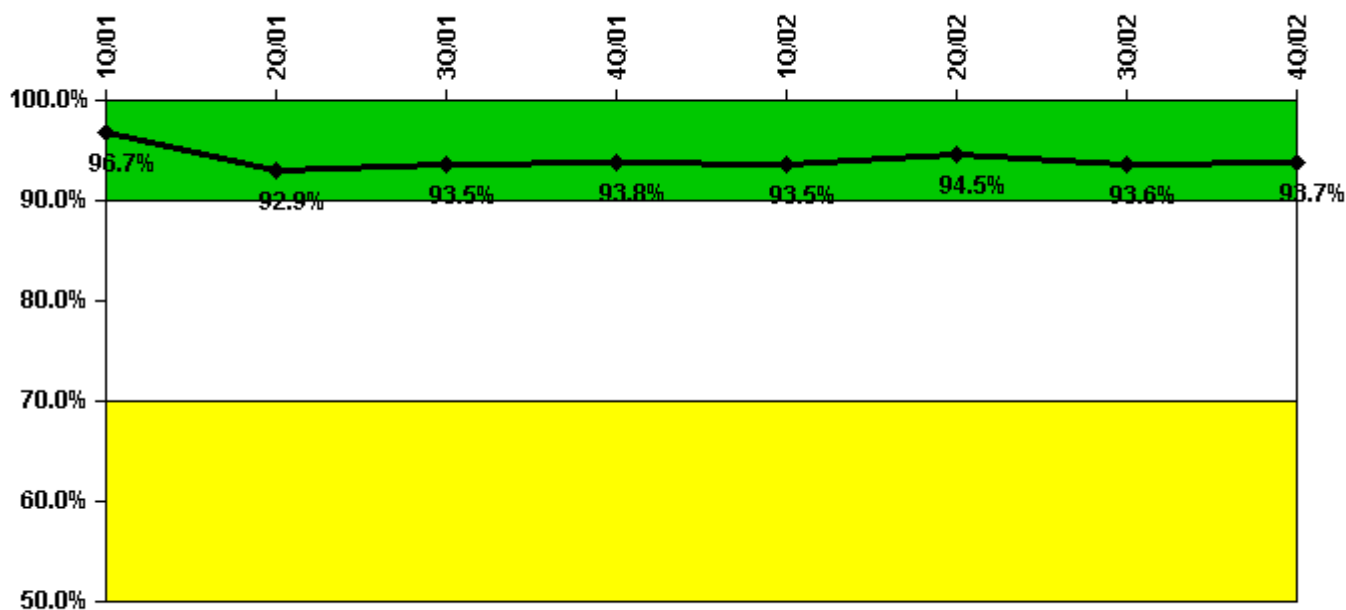
Notes

Reactor Coolant System Leakage	1/01	2/01	3/01	4/01	5/01	6/01	7/01	8/01	9/01	10/01	11/01	12/01
Maximum leakage	N/A	0.840	0.460	0.470	0.380	0.560	0.440	0.370	0.380	0.390	0.380	0.450
Technical specification limit	10.0	10.0	10.0	10.0	10.0	10.0	10.0	10.0	10.0	10.0	10.0	10.0
Indicator value	N/A	8.4	4.6	4.7	3.8	5.6	4.4	3.7	3.8	3.9	3.8	4.5

Reactor Coolant System Leakage	1/02	2/02	3/02	4/02	5/02	6/02	7/02	8/02	9/02	10/02	11/02	12/02
Maximum leakage	0.370	0.360	0.370	0.360	0.170	0.330	0.030	0.060	0	0.060	0.030	0.050
Technical specification limit	10.0	10.0	10.0	10.0	10.0	10.0	10.0	10.0	10.0	10.0	10.0	10.0
Indicator value	3.7	3.6	3.7	3.6	1.7	3.3	0.3	0.6	0	0.6	0.3	0.5

Licensee Comments: none

Drill/Exercise Performance



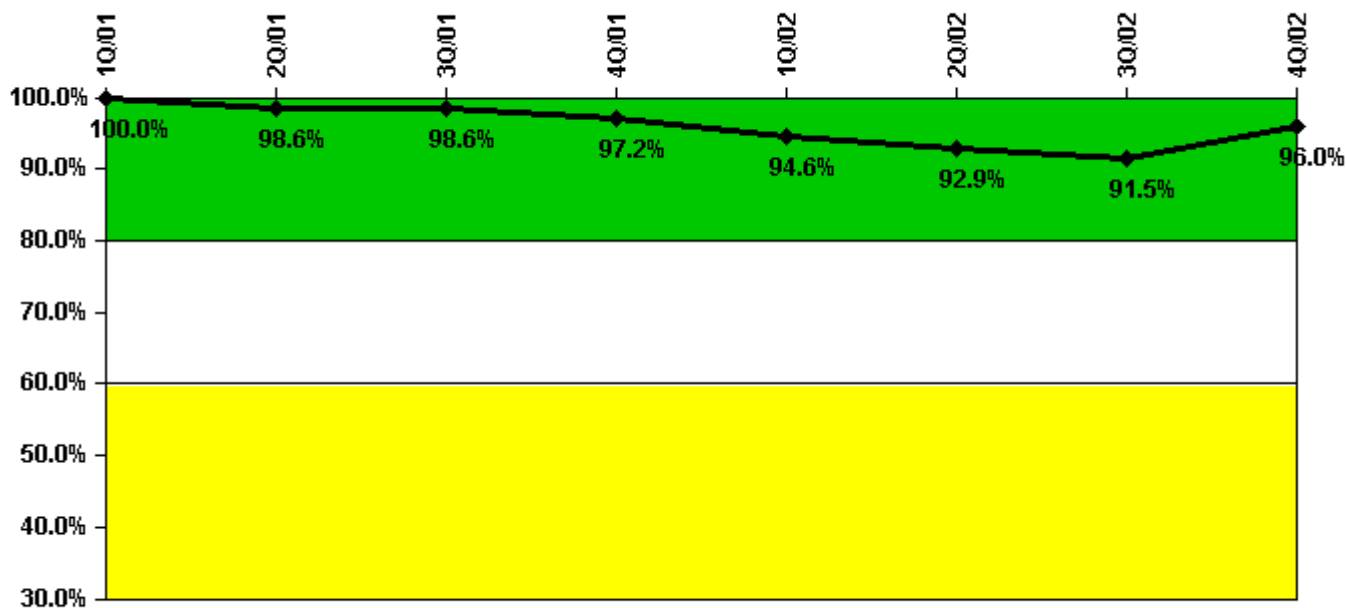
Thresholds: White < 90.0% Yellow < 70.0%

Notes

Drill/Exercise Performance	1Q/01	2Q/01	3Q/01	4Q/01	1Q/02	2Q/02	3Q/02	4Q/02
Successful opportunities	10.0	32.0	28.0	29.0	29.0	15.0	18.0	16.0
Total opportunities	11.0	39.0	28.0	29.0	29.0	15.0	21.0	17.0
Indicator value	96.7%	92.9%	93.5%	93.8%	93.5%	94.5%	93.6%	93.7%

Licensee Comments: none

ERO Drill Participation



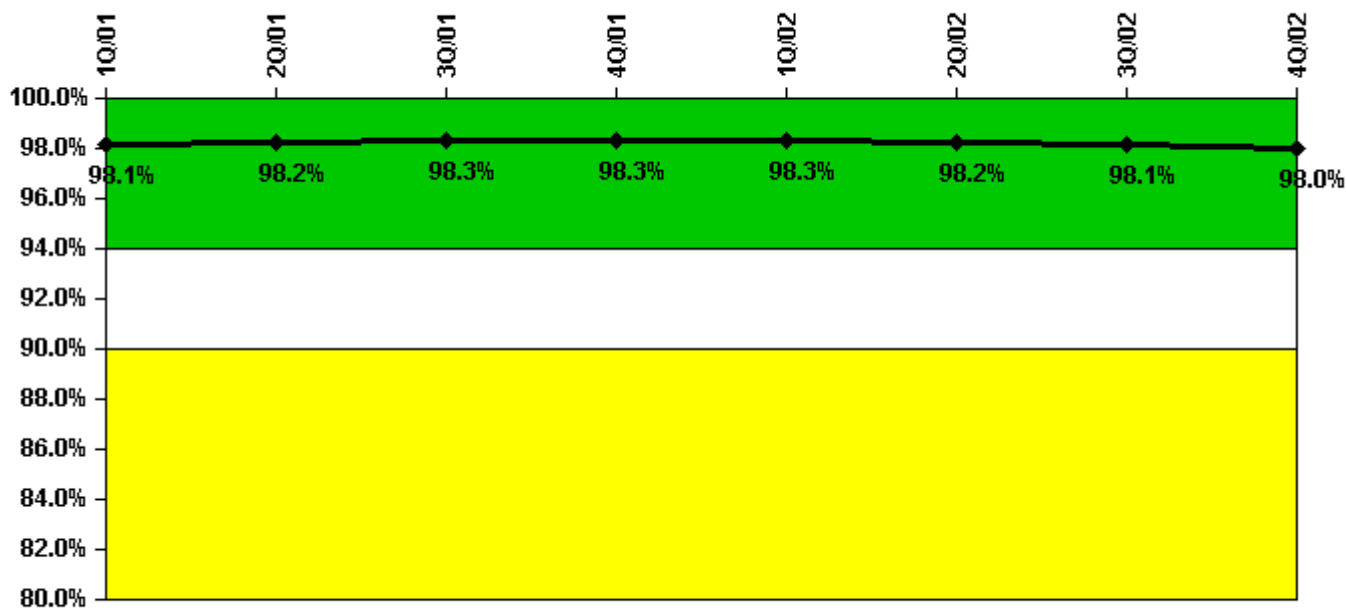
Thresholds: White < 80.0% Yellow < 60.0%

Notes

ERO Drill Participation	1Q/01	2Q/01	3Q/01	4Q/01	1Q/02	2Q/02	3Q/02	4Q/02
Participating Key personnel	70.0	70.0	69.0	70.0	70.0	65.0	65.0	72.0
Total Key personnel	70.0	71.0	70.0	72.0	74.0	70.0	71.0	75.0
Indicator value	100.0%	98.6%	98.6%	97.2%	94.6%	92.9%	91.5%	96.0%

Licensee Comments: none

Alert & Notification System



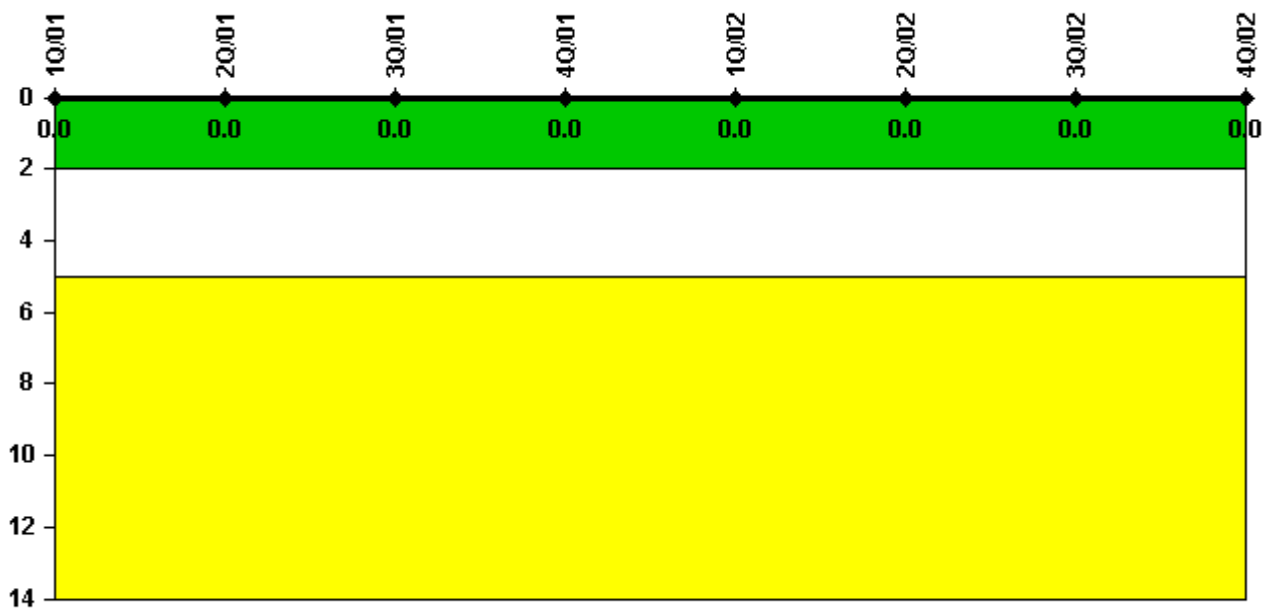
Thresholds: White < 94.0% Yellow < 90.0%

Notes

Alert & Notification System	1Q/01	2Q/01	3Q/01	4Q/01	1Q/02	2Q/02	3Q/02	4Q/02
Successful siren-tests	1681	1660	1652	1781	1572	1658	1746	1670
Total sirens-tests	1696	1696	1694	1802	1590	1696	1802	1695
Indicator value	98.1%	98.2%	98.3%	98.3%	98.3%	98.2%	98.1%	98.0%

Licensee Comments: none

Occupational Exposure Control Effectiveness



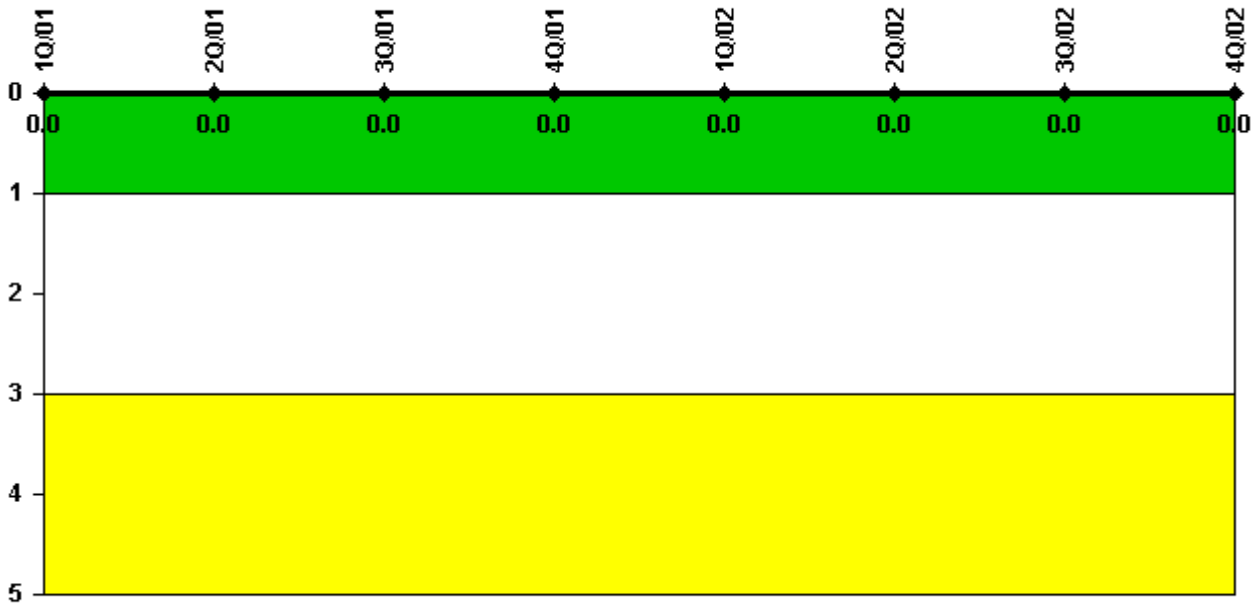
Thresholds: White > 2.0 Yellow > 5.0

Notes

Occupational Exposure Control Effectiveness	1Q/01	2Q/01	3Q/01	4Q/01	1Q/02	2Q/02	3Q/02	4Q/02
High radiation area occurrences	0	0	0	0	0	0	0	0
Very high radiation area occurrences	0	0	0	0	0	0	0	0
Unintended exposure occurrences	0	0	0	0	0	0	0	0
Indicator value	0	0	0	0	0	0	0	0

Licensee Comments: none

RETS/ODCM Radiological Effluent



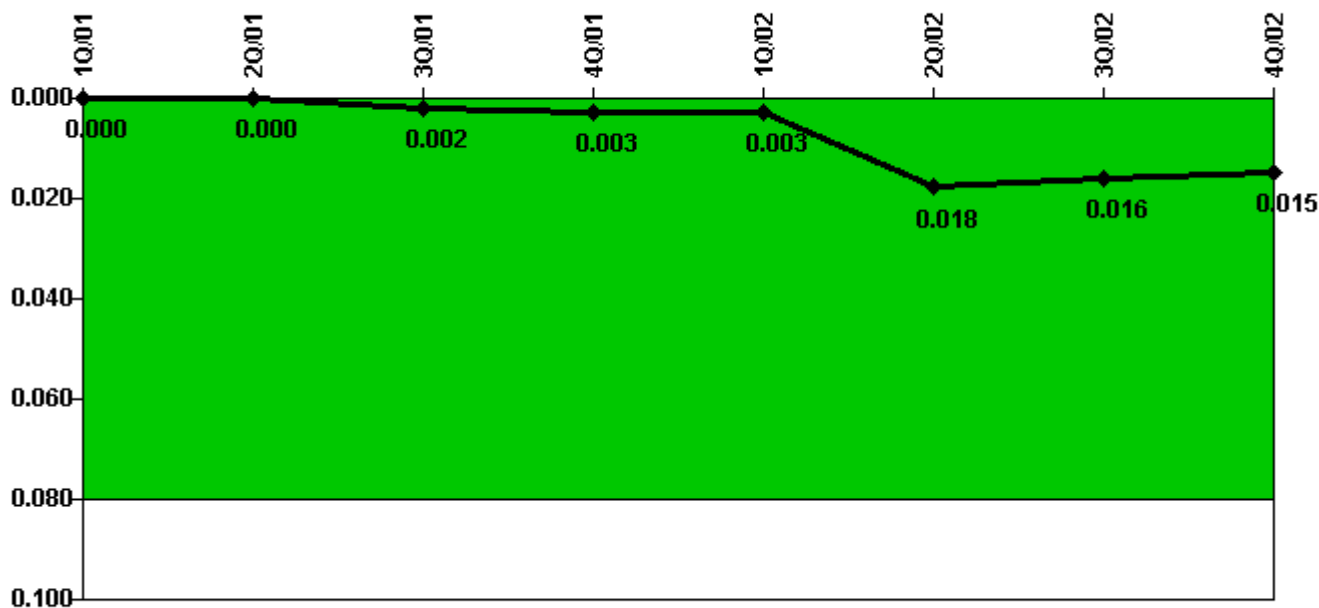
Thresholds: White > 1.0 Yellow > 3.0

Notes

RETS/ODCM Radiological Effluent	1Q/01	2Q/01	3Q/01	4Q/01	1Q/02	2Q/02	3Q/02	4Q/02
RETS/ODCM occurrences	0	0	0	0	0	0	0	0
Indicator value	0	0	0	0	0	0	0	0

Licensee Comments: none

Protected Area Security Performance Index



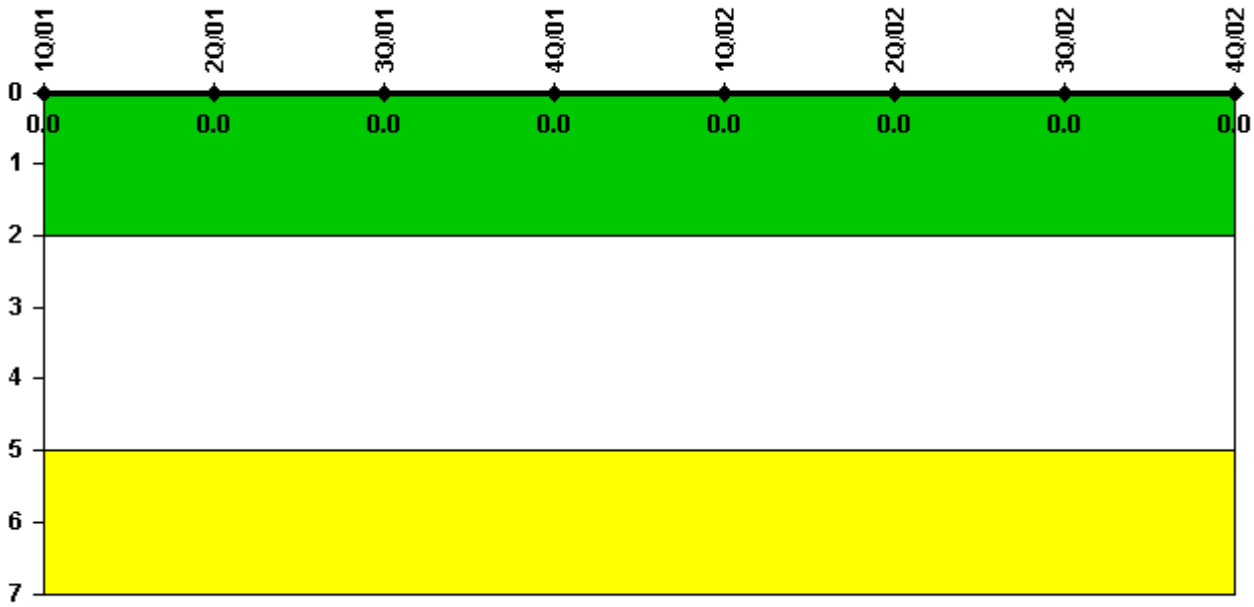
Thresholds: White > 0.080

Notes

Protected Area Security Performance Index	1Q/01	2Q/01	3Q/01	4Q/01	1Q/02	2Q/02	3Q/02	4Q/02
IDS compensatory hours	0	1.60	36.10	25.40	1.00	291.10	0	2.18
CCTV compensatory hours	0.4	0	0	1.9	0	0	0.9	0
IDS normalization factor	1.15	1.15	1.15	1.15	1.15	1.15	1.15	1.15
CCTV normalization factor	1.0	1.0	1.0	1.0	1.0	1.0	1.0	1.0
Index Value	0	0	0.002	0.003	0.003	0.018	0.016	0.015

Licensee Comments: none

Personnel Screening Program



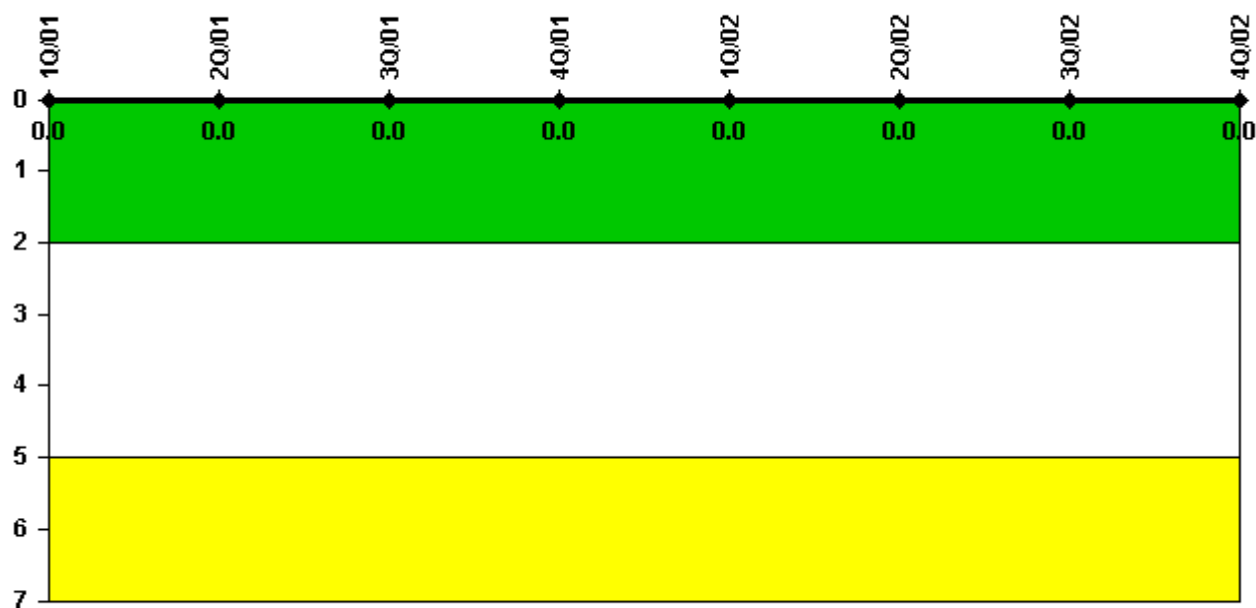
Thresholds: White > 2.0 Yellow > 5.0

Notes

Personnel Screening Program	1Q/01	2Q/01	3Q/01	4Q/01	1Q/02	2Q/02	3Q/02	4Q/02
Program failures	0	0	0	0	0	0	0	0
Indicator value	0	0	0	0	0	0	0	0

Licensee Comments: none

FFD/Personnel Reliability



Thresholds: White > 2.0 Yellow > 5.0

Notes

FFD/Personnel Reliability	1Q/01	2Q/01	3Q/01	4Q/01	1Q/02	2Q/02	3Q/02	4Q/02
Program Failures	0	0	0	0	0	0	0	0
Indicator value	0	0	0	0	0	0	0	0

Licensee Comments: none

▲ [PI Summary](#) | [Inspection Findings Summary](#) | [Reactor Oversight Process](#)

Last Modified: January 30, 2003