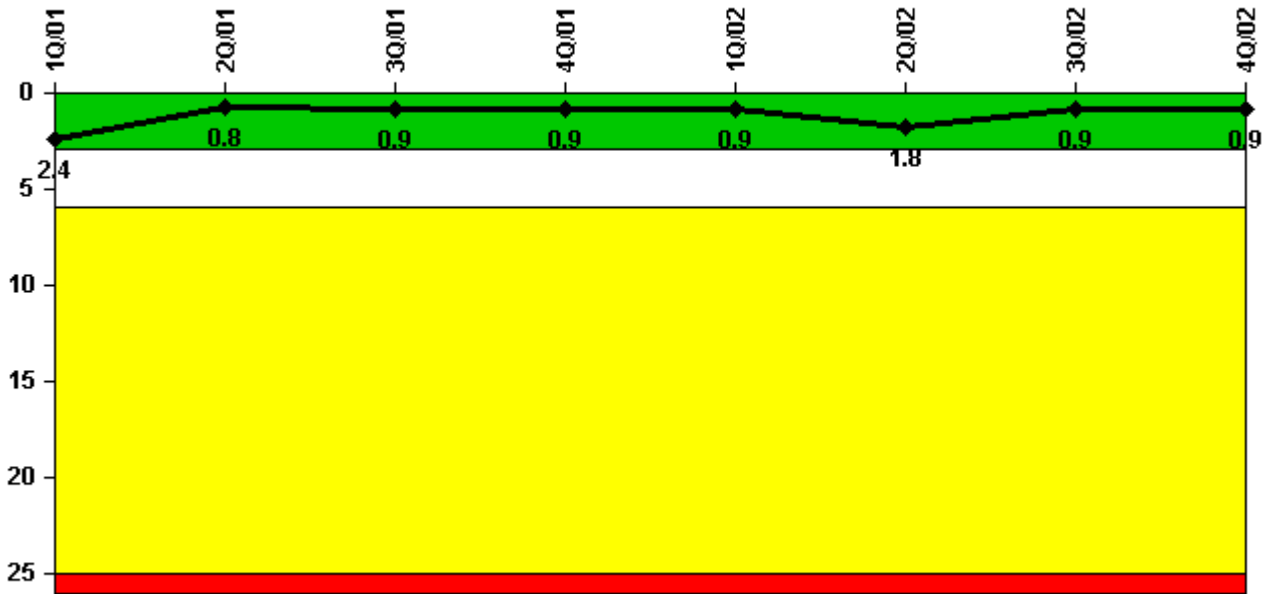


## Quad Cities 2

### 4Q/2002 Performance Indicators

Licensee's General Comments: none

#### Unplanned Scrams per 7000 Critical Hrs



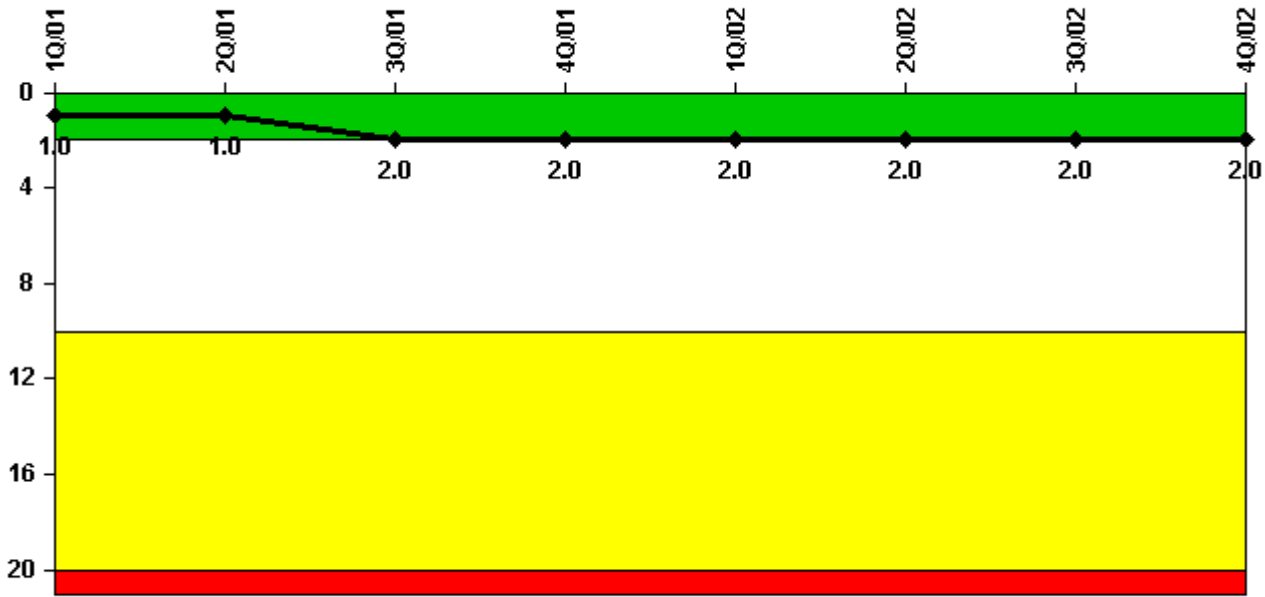
**Thresholds: White > 3.0 Yellow > 6.0 Red > 25.0**

#### Notes

Unplanned Scrams per 7000 Critical Hrs	1Q/01	2Q/01	3Q/01	4Q/01	1Q/02	2Q/02	3Q/02	4Q/02
Unplanned scrams	0	0	1.0	0	0	1.0	0	0
Critical hours	2097.5	2183.0	1616.2	2209.0	1624.5	2150.0	1967.3	2209.0
Indicator value	2.4	0.8	0.9	0.9	0.9	1.8	0.9	0.9

Licensee Comments: none

### Scrams with Loss of Normal Heat Removal



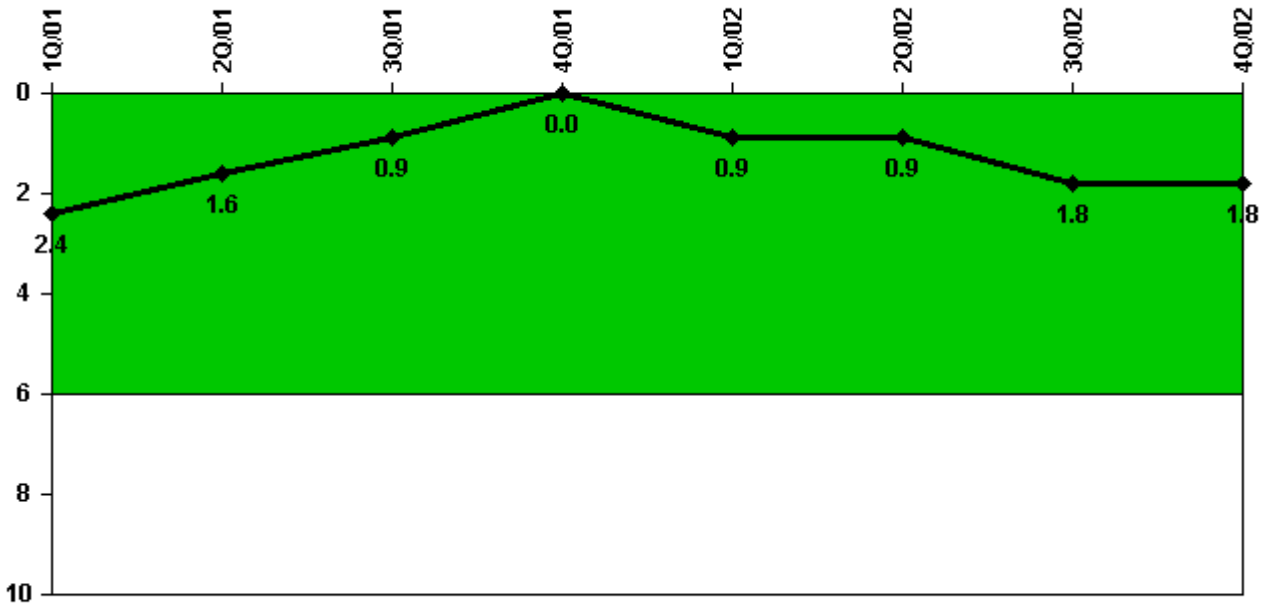
Thresholds: White > 2.0 Yellow > 10.0 Red > 20.0

#### Notes

Scrams with Loss of Normal Heat Removal	1Q/01	2Q/01	3Q/01	4Q/01	1Q/02	2Q/02	3Q/02	4Q/02
Scrams	0	0	1.0	0	0	0	0	0
Indicator value	1.0	1.0	2.0	2.0	2.0	2.0	2.0	2.0

Licensee Comments: none

### Unplanned Power Changes per 7000 Critical Hrs



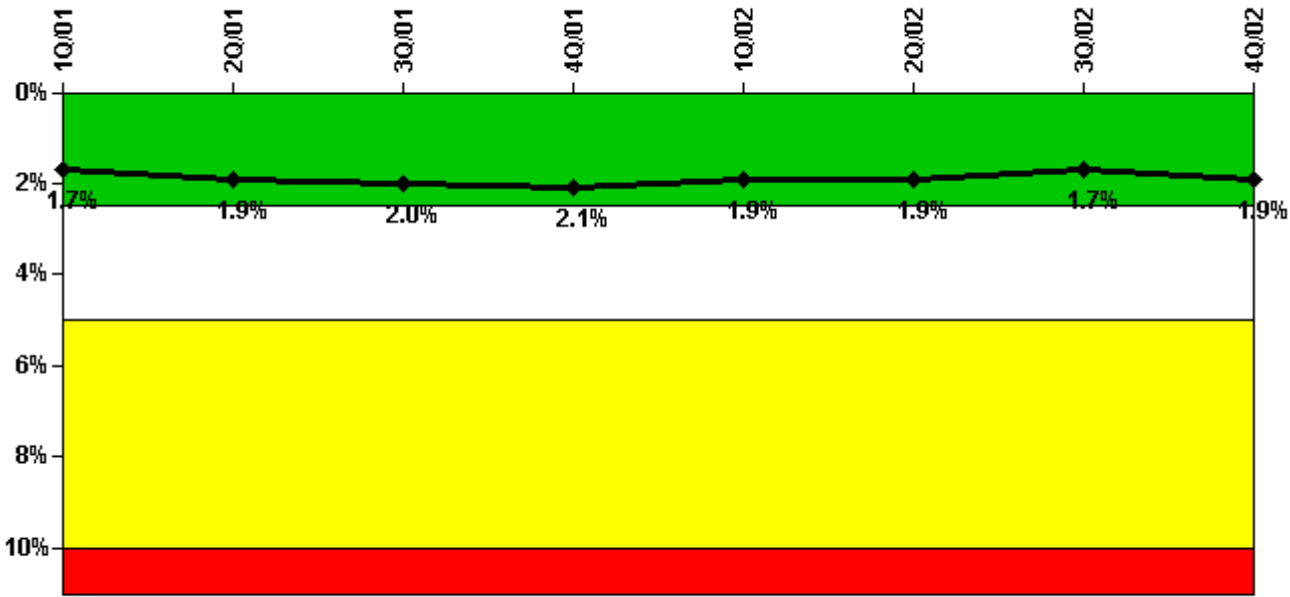
Thresholds: White > 6.0

#### Notes

Unplanned Power Changes per 7000 Critical Hrs	1Q/01	2Q/01	3Q/01	4Q/01	1Q/02	2Q/02	3Q/02	4Q/02
Unplanned power changes	0	0	0	0	1.0	0	1.0	0
Critical hours	2097.5	2183.0	1616.2	2209.0	1624.5	2150.0	1967.3	2209.0
Indicator value	2.4	1.6	0.9	0	0.9	0.9	1.8	1.8

Licensee Comments: none

### Safety System Unavailability, Emergency AC Power



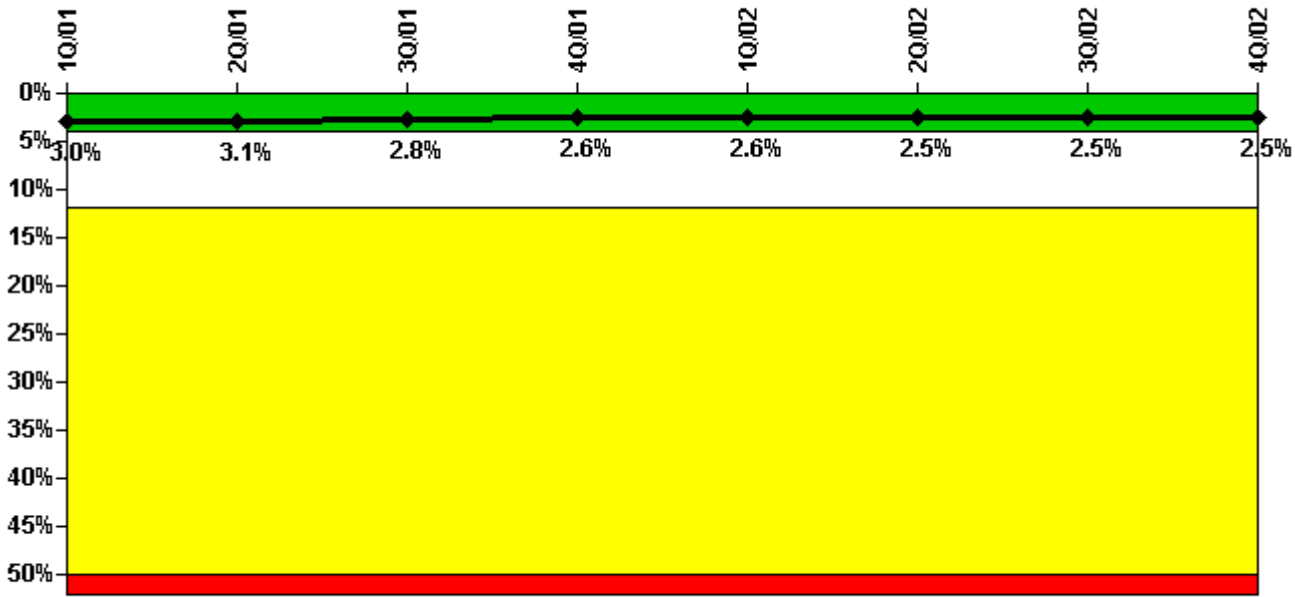
Thresholds: White > 2.5% Yellow > 5.0% Red > 10.0%

#### Notes

Safety System Unavailability, Emergency AC Power	1Q/01	2Q/01	3Q/01	4Q/01	1Q/02	2Q/02	3Q/02	4Q/02
<b>Train 1</b>								
Planned unavailable hours	77.72	47.60	23.15	8.58	24.73	14.47	20.60	14.70
Unplanned unavailable hours	0	78.30	0	0	0	0	0	0
Fault exposure hours	0	0	0	0	0	0	0	0
Effective Reset hours	0	0	0	0	0	0	0	0
Required hours	2160.00	2183.00	2208.00	2209.00	2160.00	2183.00	2208.00	2209.00
<b>Train 2</b>								
Planned unavailable hours	33.45	57.50	23.77	20.97	11.85	18.28	18.68	92.85
Unplanned unavailable hours	2.62	0	0	0	0	0	0	20.15
Fault exposure hours	0	0	0	0	0	0	0	0
Effective Reset hours	0	0	0	0	0	0	0	0
Required hours	2160.00	2183.00	2208.00	2209.00	2160.00	2183.00	2208.00	2209.00
<b>Indicator value</b>	<b>1.7%</b>	<b>1.9%</b>	<b>2.0%</b>	<b>2.1%</b>	<b>1.9%</b>	<b>1.9%</b>	<b>1.7%</b>	<b>1.9%</b>

Licensee Comments: none

### Safety System Unavailability, High Pressure Injection System (HPCI)



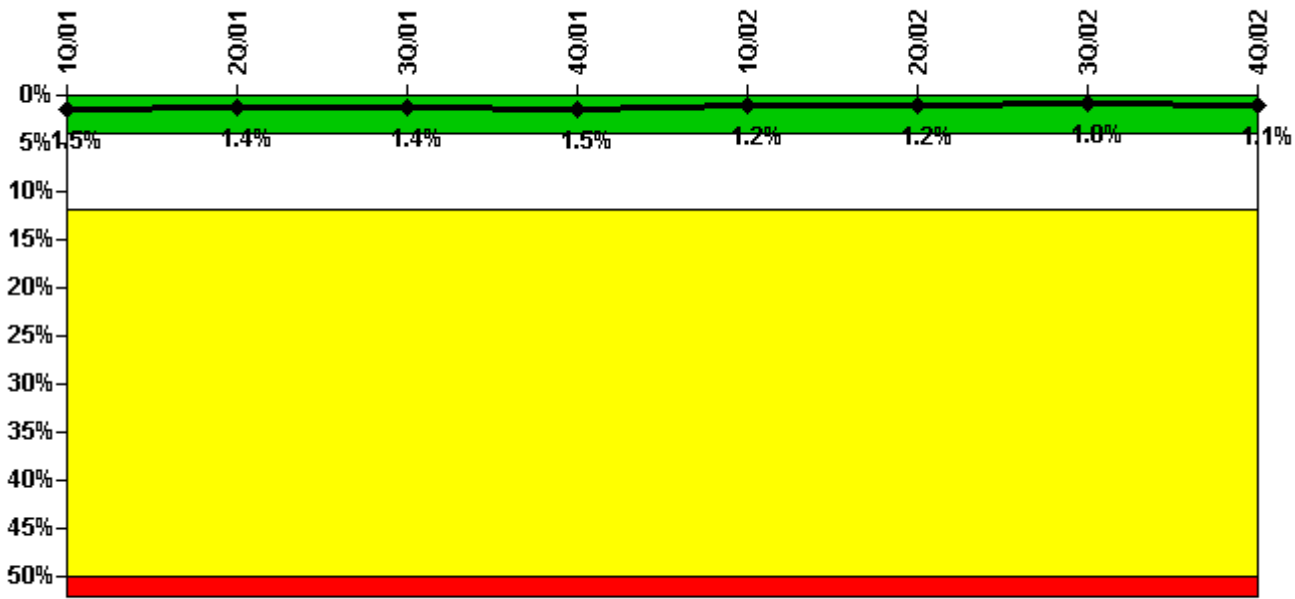
Thresholds: White > 4.0% Yellow > 12.0% Red > 50.0%

#### Notes

Safety System Unavailability, High Pressure Injection System (HPCI)	1Q/01	2Q/01	3Q/01	4Q/01	1Q/02	2Q/02	3Q/02	4Q/02
Train 1								
Planned unavailable hours	71.66	10.50	4.79	5.97	8.01	57.08	4.03	33.02
Unplanned unavailable hours	195.83	42.81	0	0	0	0	0.22	0.08
Fault exposure hours	0	0	0	0	0	0	0	0
Effective Reset hours	0	0	0	0	0	0	0	0
Required hours	2097.50	2183.00	1616.20	2209.00	1624.50	2150.00	1967.30	2209.00
Indicator value	3.0%	3.1%	2.8%	2.6%	2.6%	2.5%	2.5%	2.5%

Licensee Comments: none

### Safety System Unavailability, Heat Removal System (RCIC)



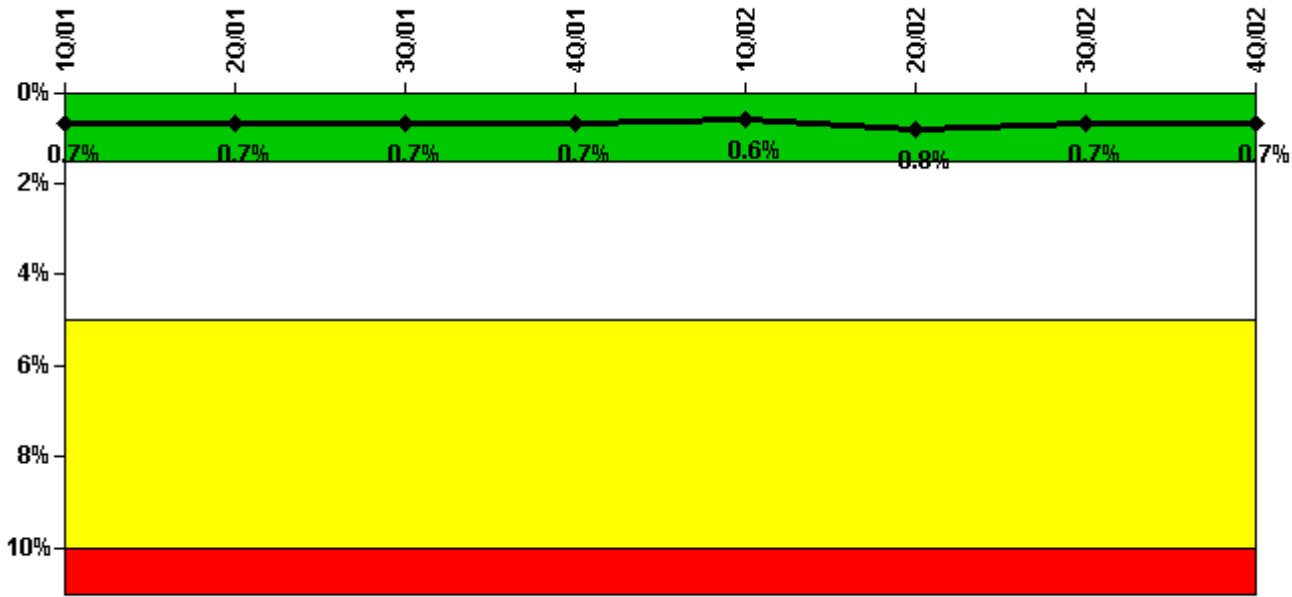
Thresholds: White > 4.0% Yellow > 12.0% Red > 50.0%

#### Notes

Safety System Unavailability, Heat Removal System (RCIC)	1Q/01	2Q/01	3Q/01	4Q/01	1Q/02	2Q/02	3Q/02	4Q/02
Train 1								
Planned unavailable hours	34.53	11.78	3.33	51.60	5.12	8.37	9.49	26.37
Unplanned unavailable hours	0	0	0	0	0	0	5.00	0.08
Fault exposure hours	0	0	0	0	0	0	0	0
Effective Reset hours	0	0	0	0	0	0	0	0
Required hours	2097.50	2183.00	1616.20	2209.00	1624.50	2150.00	1967.30	2209.00
Indicator value	1.5%	1.4%	1.4%	1.5%	1.2%	1.2%	1.0%	1.1%

Licensee Comments: none

### Safety System Unavailability, Residual Heat Removal System



Thresholds: White > 1.5% Yellow > 5.0% Red > 10.0%

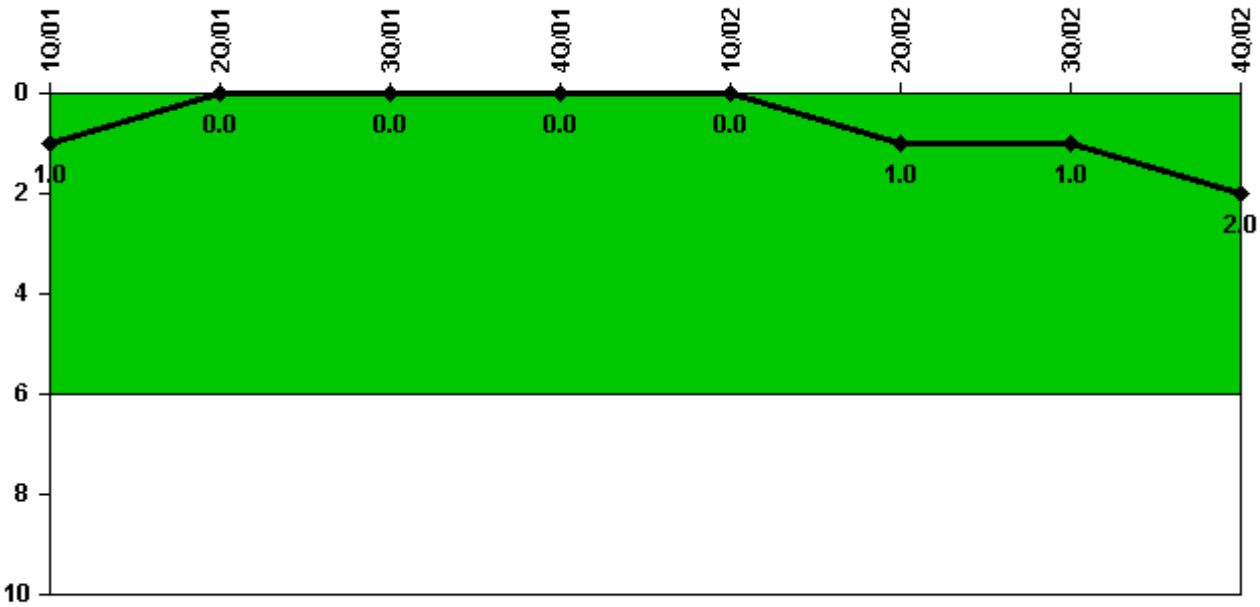
#### Notes

Safety System Unavailability, Residual Heat Removal System	1Q/01	2Q/01	3Q/01	4Q/01	1Q/02	2Q/02	3Q/02	4Q/02
<b>Train 1</b>								
Planned unavailable hours	19.15	0	3.88	0	12.13	9.22	0	0
Unplanned unavailable hours	0	0	0	0	0	0	0	0
Fault exposure hours	0	0	0	0	0	0	0	0
Effective Reset hours	0	0	0	0	0	0	0	0
Required hours	2160.00	2183.00	2208.00	2209.00	2160.00	2183.00	2208.00	2209.00
<b>Train 2</b>								
Planned unavailable hours	16.73	5.20	0	4.03	7.03	69.80	0	30.72
Unplanned unavailable hours	0	0	0	0	0	0	0	0
Fault exposure hours	0	0	0	0	0	0	0	0
Effective Reset hours	0	0	0	0	0	0	0	0
Required hours	2160.00	2183.00	2208.00	2209.00	2160.00	2183.00	2208.00	2209.00
<b>Indicator value</b>	<b>0.7%</b>	<b>0.7%</b>	<b>0.7%</b>	<b>0.7%</b>	<b>0.6%</b>	<b>0.8%</b>	<b>0.7%</b>	<b>0.7%</b>

#### Licensee Comments:

4Q/02: An event involving a potential loss of fill on the Residual Heat Removal (RHR) system is currently under review. The event was discovered on January 4, 2003. The event may potentially involve Fault Exposure (possibly T/2) for both the 4th quarter 2002 and the 1st quarter 2003.

### Safety System Functional Failures (BWR)



Thresholds: White > 6.0

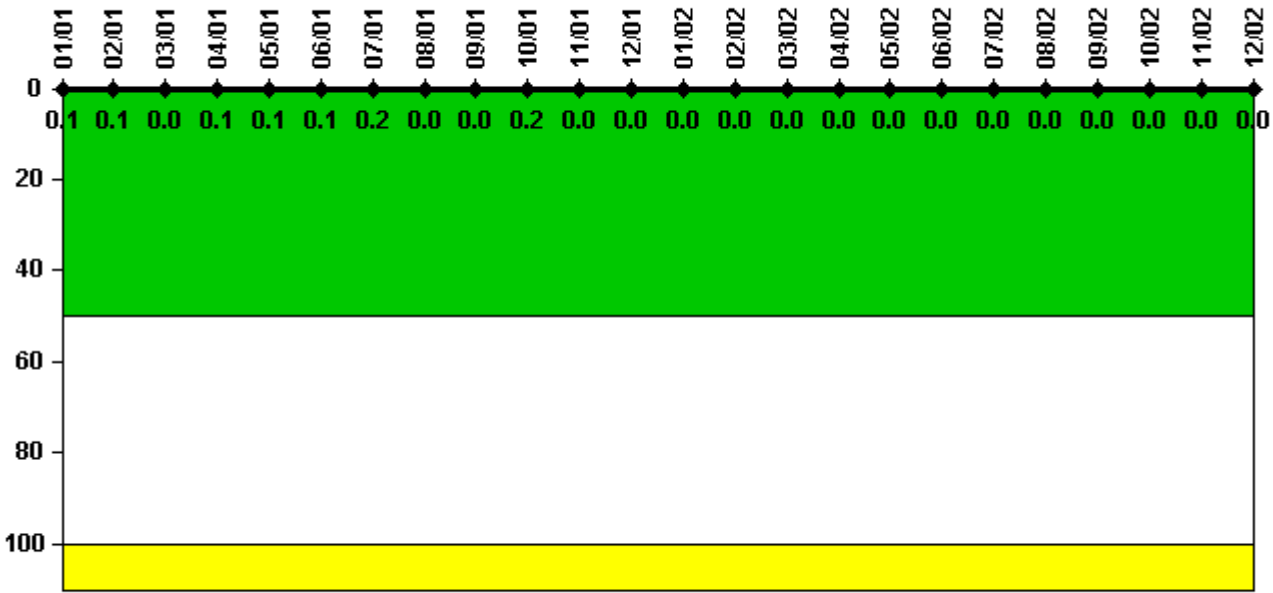
#### Notes

Safety System Functional Failures (BWR)	1Q/01	2Q/01	3Q/01	4Q/01	1Q/02	2Q/02	3Q/02	4Q/02
Safety System Functional Failures	0	0	0	0	0	1	0	1
Indicator value	1	0	0	0	0	1	1	2

Licensee Comments: none



### Reactor Coolant System Activity



Thresholds: White > 50.0 Yellow > 100.0

#### Notes

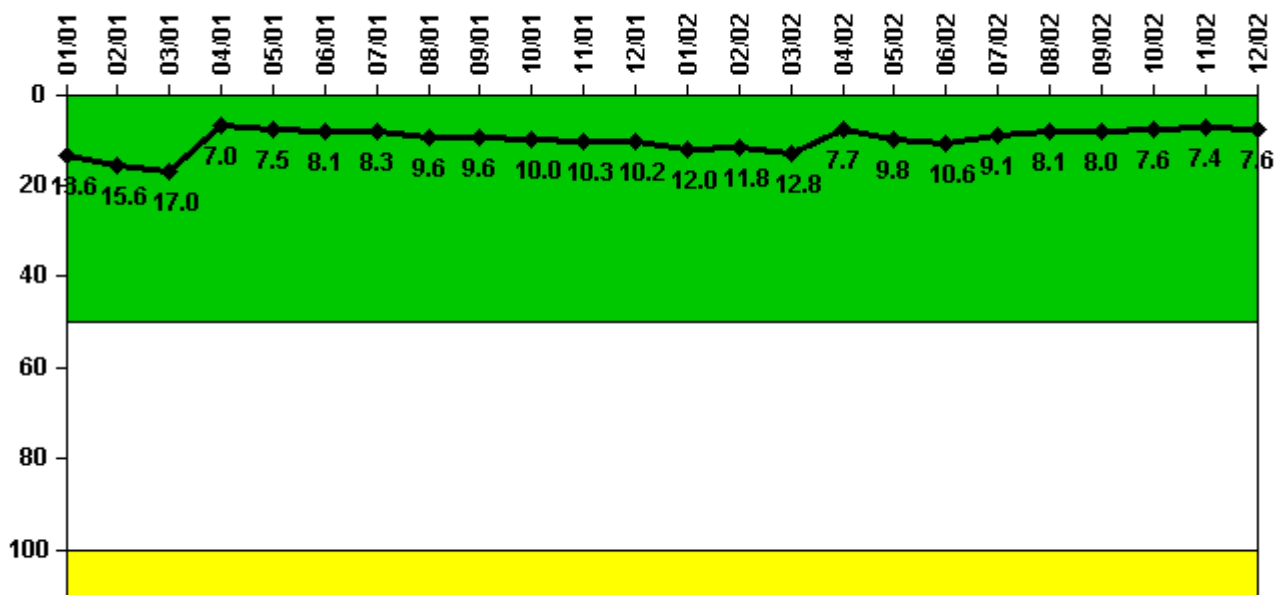
Reactor Coolant System Activity	1/01	2/01	3/01	4/01	5/01	6/01	7/01	8/01	9/01	10/01	11/01	12/01
Maximum activity	0.000109	0.000143	0.000088	0.000107	0.000136	0.000235	0.000333	0.000093	0.000097	0.000313	0.000080	0.000076
Technical specification limit	0.2	0.2	0.2	0.2	0.2	0.2	0.2	0.2	0.2	0.2	0.2	0.2
Indicator value	0.1	0.1	0	0.1	0.1	0.1	0.2	0	0	0.2	0	0

Reactor Coolant System Activity	1/02	2/02	3/02	4/02	5/02	6/02	7/02	8/02	9/02	10/02	11/02	12/02
Maximum activity	0.000090	0.000055	0.000043	0.000046	0.000050	0.000047	0.000041	0.000044	0.000057	0.000042	0.000042	0.000038
Technical specification limit	0.2	0.2	0.2	0.2	0.2	0.2	0.2	0.2	0.2	0.2	0.2	0.2
Indicator value	0	0	0	0	0	0	0	0	0	0	0	0

Licensee Comments: none

### Reactor Coolant System Leakage



Thresholds: White > 50.0 Yellow > 100.0

#### Notes

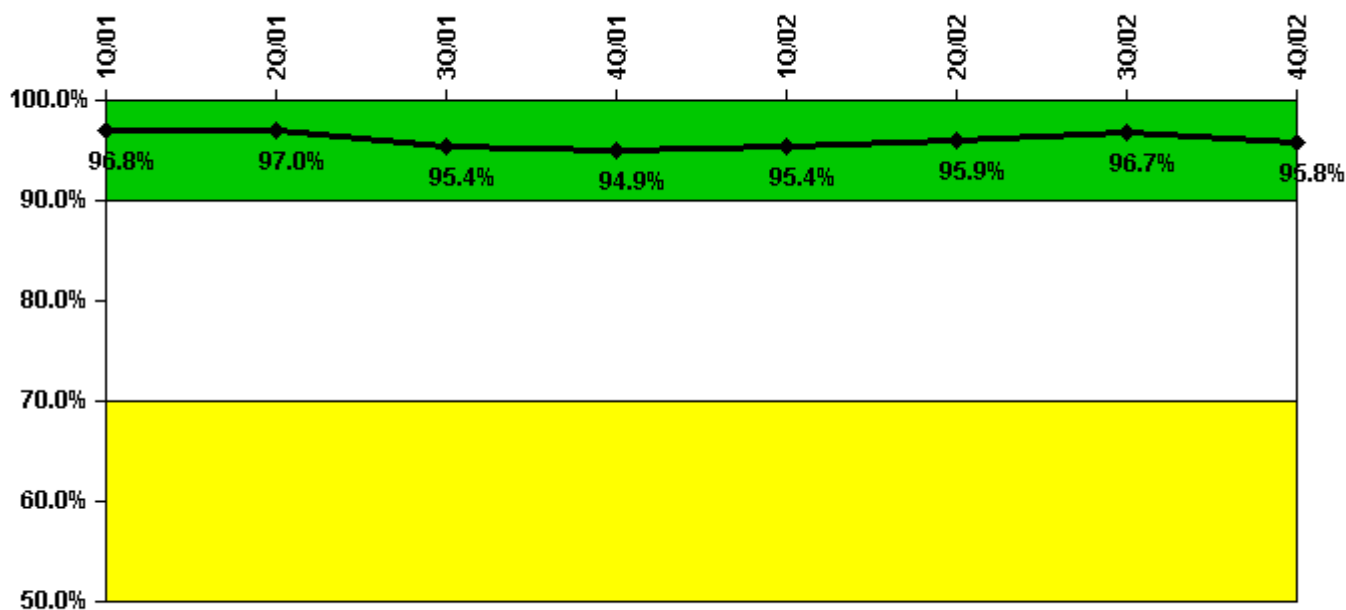
Reactor Coolant System Leakage	1/01	2/01	3/01	4/01	5/01	6/01	7/01	8/01	9/01	10/01	11/01	12/01
Maximum leakage	3.400	3.910	4.250	1.740	1.880	2.020	2.080	2.400	2.400	2.500	2.570	2.560
Technical specification limit	25.0	25.0	25.0	25.0	25.0	25.0	25.0	25.0	25.0	25.0	25.0	25.0
Indicator value	13.6	15.6	17.0	7.0	7.5	8.1	8.3	9.6	9.6	10.0	10.3	10.2

Reactor Coolant System Leakage	1/02	2/02	3/02	4/02	5/02	6/02	7/02	8/02	9/02	10/02	11/02	12/02
Maximum leakage	2.990	2.940	3.190	1.920	2.450	2.660	2.280	2.030	2.010	1.910	1.850	1.890
Technical specification limit	25.0	25.0	25.0	25.0	25.0	25.0	25.0	25.0	25.0	25.0	25.0	25.0
Indicator value	12.0	11.8	12.8	7.7	9.8	10.6	9.1	8.1	8.0	7.6	7.4	7.6

Licensee Comments: none

### Drill/Exercise Performance



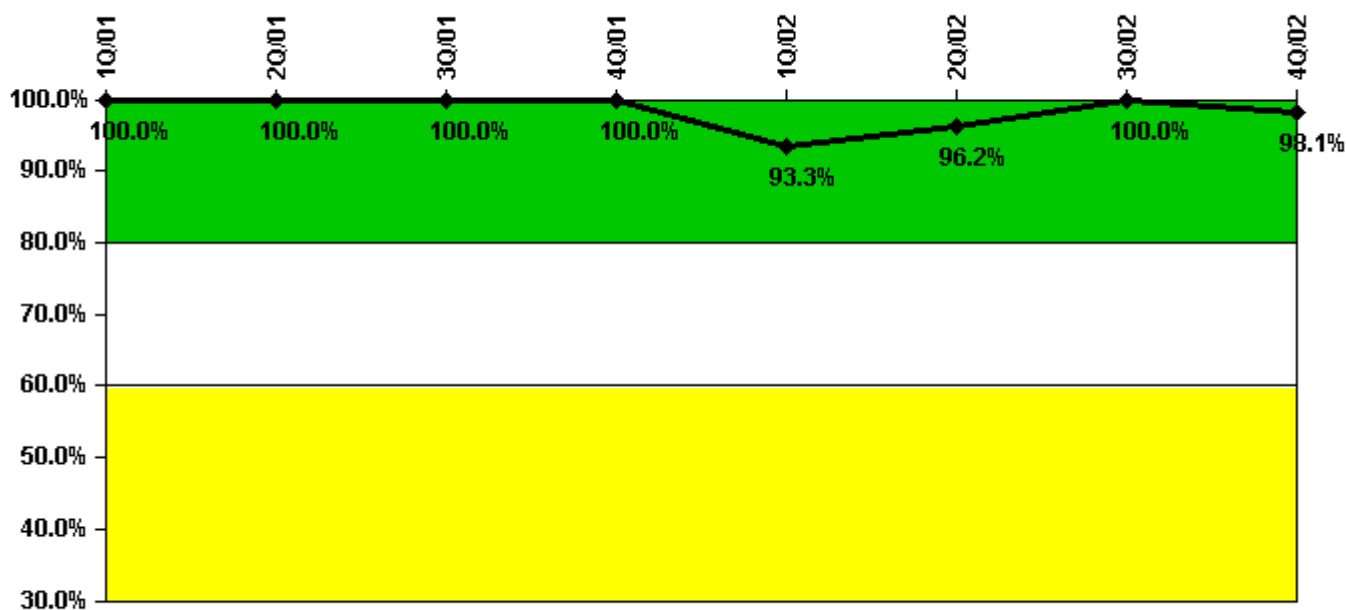
Thresholds: White < 90.0% Yellow < 70.0%

### Notes

Drill/Exercise Performance	1Q/01	2Q/01	3Q/01	4Q/01	1Q/02	2Q/02	3Q/02	4Q/02
Successful opportunities	0	45.0	7.0	48.0	0	43.0	55.0	30.0
Total opportunities	0	46.0	10.0	50.0	0	44.0	56.0	32.0
Indicator value	96.8%	97.0%	95.4%	94.9%	95.4%	95.9%	96.7%	95.8%

Licensee Comments: none

### ERO Drill Participation



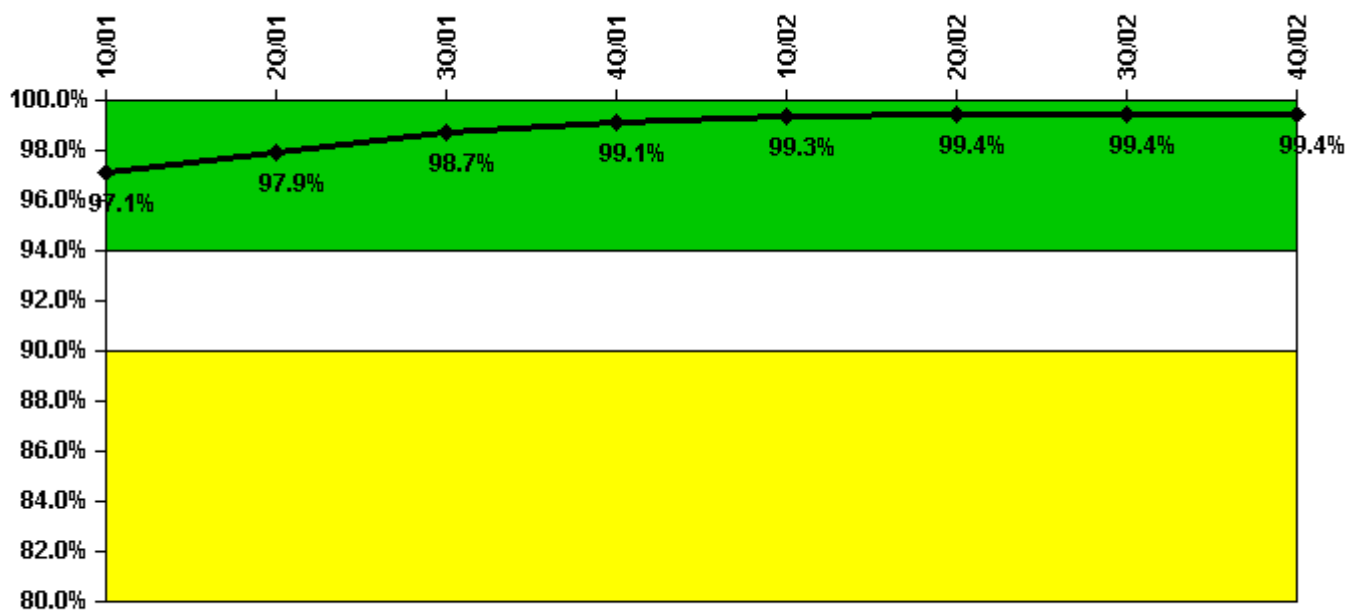
Thresholds: White < 80.0% Yellow < 60.0%

#### Notes

ERO Drill Participation	1Q/01	2Q/01	3Q/01	4Q/01	1Q/02	2Q/02	3Q/02	4Q/02
Participating Key personnel	65.0	66.0	67.0	56.0	42.0	51.0	54.0	52.0
Total Key personnel	65.0	66.0	67.0	56.0	45.0	53.0	54.0	53.0
Indicator value	100.0%	100.0%	100.0%	100.0%	93.3%	96.2%	100.0%	98.1%

Licensee Comments: none

### Alert & Notification System



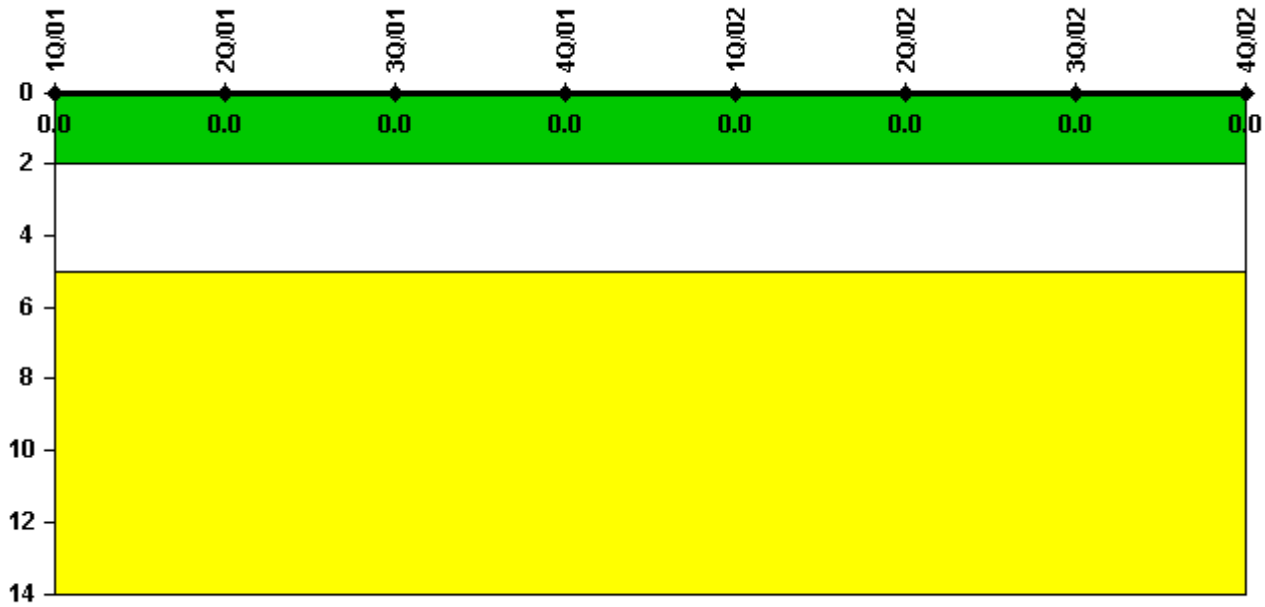
Thresholds: White < 94.0% Yellow < 90.0%

#### Notes

Alert & Notification System	1Q/01	2Q/01	3Q/01	4Q/01	1Q/02	2Q/02	3Q/02	4Q/02
Successful siren-tests	3436	3453	3405	3311	3256	3313	3301	3306
Total sirens-tests	3484	3484	3432	3328	3276	3328	3328	3328
Indicator value	97.1%	97.9%	98.7%	99.1%	99.3%	99.4%	99.4%	99.4%

Licensee Comments: none

### Occupational Exposure Control Effectiveness



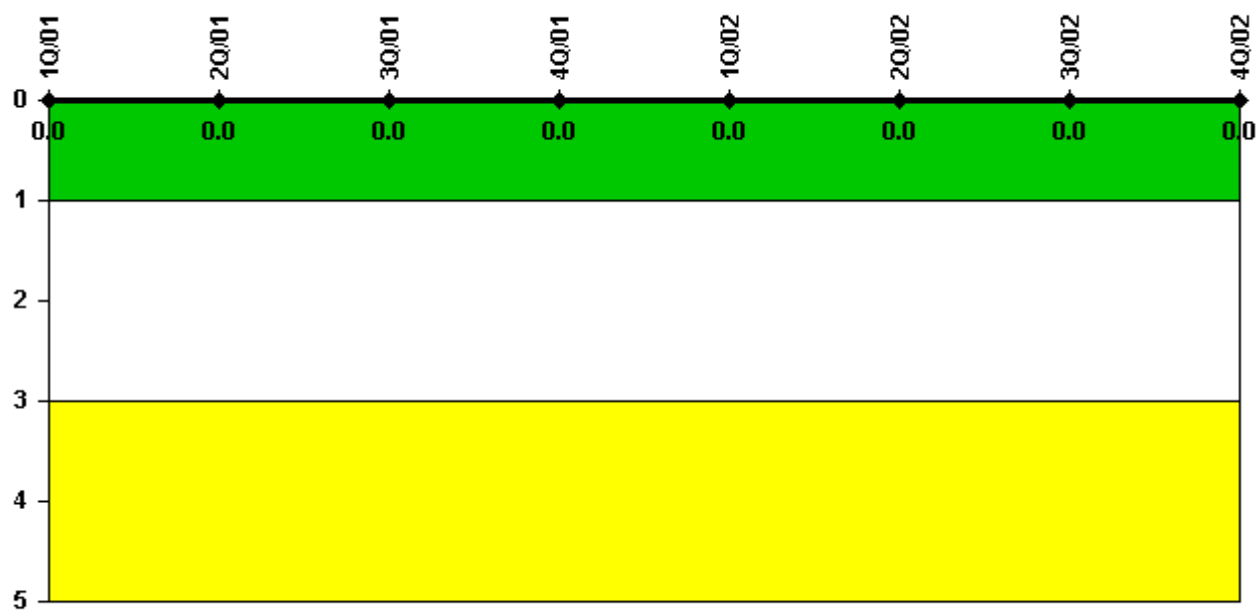
Thresholds: White > 2.0 Yellow > 5.0

#### Notes

Occupational Exposure Control Effectiveness	1Q/01	2Q/01	3Q/01	4Q/01	1Q/02	2Q/02	3Q/02	4Q/02
High radiation area occurrences	0	0	0	0	0	0	0	0
Very high radiation area occurrences	0	0	0	0	0	0	0	0
Unintended exposure occurrences	0	0	0	0	0	0	0	0
Indicator value	0	0	0	0	0	0	0	0

Licensee Comments: none

### RETS/ODCM Radiological Effluent



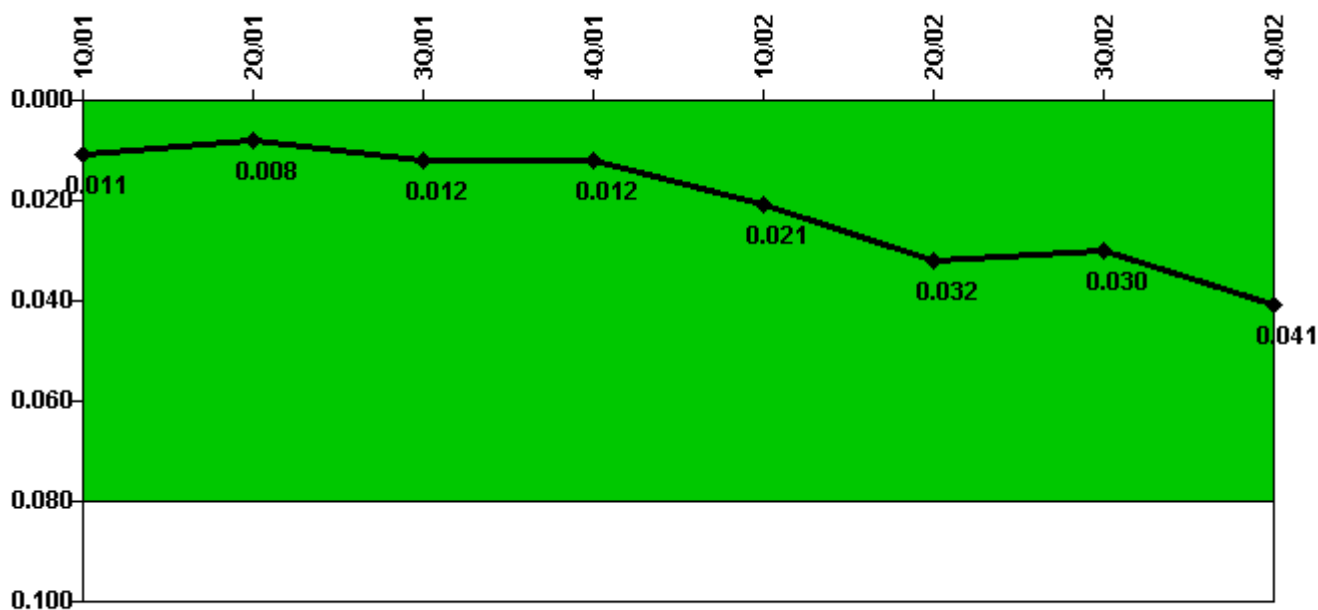
Thresholds: White > 1.0 Yellow > 3.0

#### Notes

RETS/ODCM Radiological Effluent	1Q/01	2Q/01	3Q/01	4Q/01	1Q/02	2Q/02	3Q/02	4Q/02
RETS/ODCM occurrences	0	0	0	0	0	0	0	0
Indicator value	0	0	0	0	0	0	0	0

Licensee Comments: none

### Protected Area Security Performance Index



Thresholds: White > 0.080

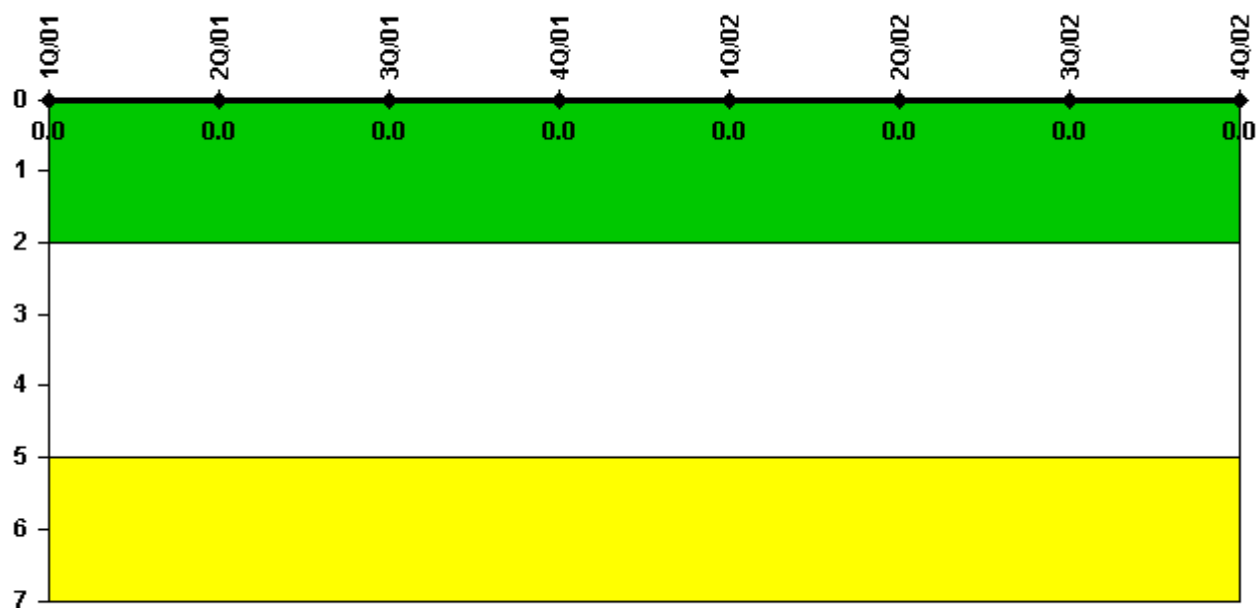
#### Notes

Protected Area Security Performance Index	1Q/01	2Q/01	3Q/01	4Q/01	1Q/02	2Q/02	3Q/02	4Q/02
IDS compensatory hours	30.70	37.60	80.50	46.40	192.60	221.90	61.20	200.10
CCTV compensatory hours	0.1	0	13.9	1.4	0	0.3	1.6	39.5
IDS normalization factor	1.00	1.00	1.00	1.00	1.00	1.00	1.00	1.00
CCTV normalization factor	1.0	1.0	1.0	1.0	1.0	1.0	1.0	1.0
<b>Index Value</b>	<b>0.011</b>	<b>0.008</b>	<b>0.012</b>	<b>0.012</b>	<b>0.021</b>	<b>0.032</b>	<b>0.030</b>	<b>0.041</b>

Licensee Comments: none



### Personnel Screening Program



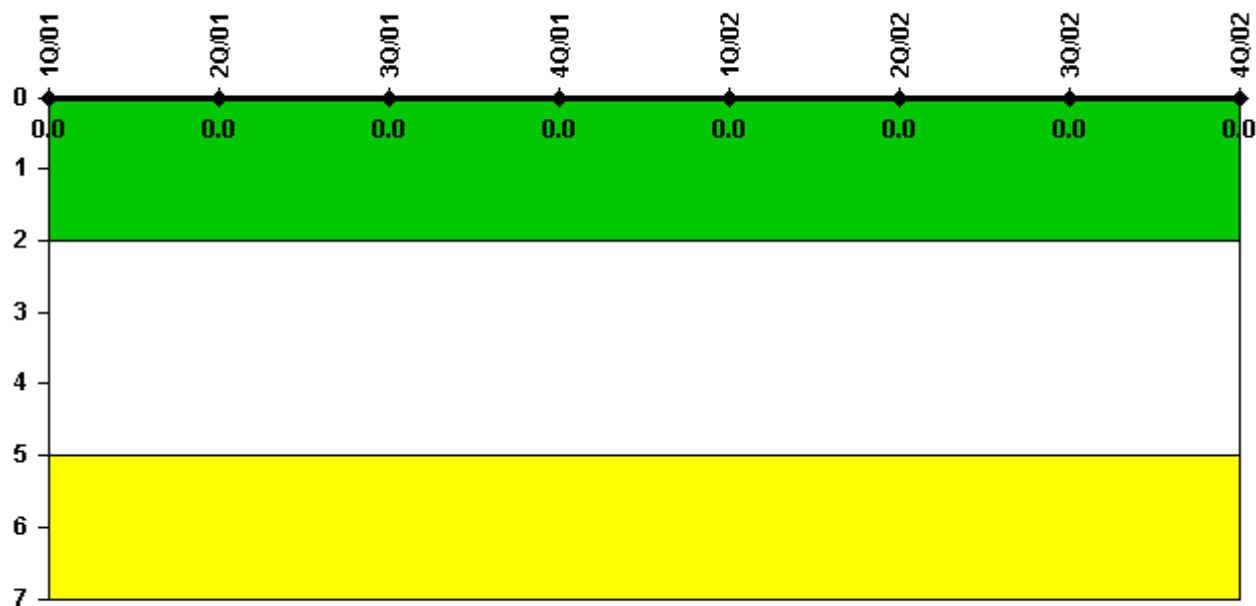
Thresholds: White > 2.0 Yellow > 5.0

#### Notes

Personnel Screening Program	1Q/01	2Q/01	3Q/01	4Q/01	1Q/02	2Q/02	3Q/02	4Q/02
Program failures	0	0	0	0	0	0	0	0
Indicator value	0	0	0	0	0	0	0	0

Licensee Comments: none

### FFD/Personnel Reliability



Thresholds: White > 2.0 Yellow > 5.0

### Notes

FFD/Personnel Reliability	1Q/01	2Q/01	3Q/01	4Q/01	1Q/02	2Q/02	3Q/02	4Q/02
Program Failures	0	0	0	0	0	0	0	0
Indicator value	0	0	0	0	0	0	0	0

Licensee Comments: none

▲ [PI Summary](#) | [Inspection Findings Summary](#) | [Reactor Oversight Process](#)

Last Modified: January 30, 2003