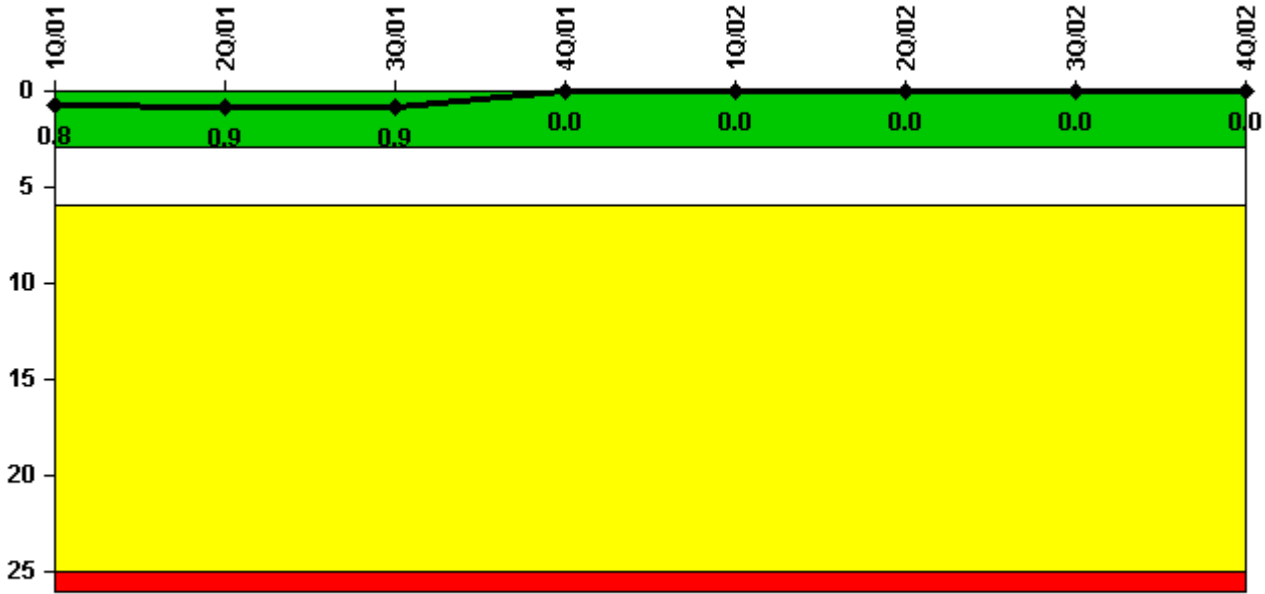


Quad Cities 1

4Q/2002 Performance Indicators

Licensee's General Comments: none

Unplanned Scrams per 7000 Critical Hrs



Thresholds: White > 3.0 Yellow > 6.0 Red > 25.0

Notes

Unplanned Scrams per 7000 Critical Hrs	1Q/01	2Q/01	3Q/01	4Q/01	1Q/02	2Q/02	3Q/02	4Q/02
Unplanned scrams	0	0	0	0	0	0	0	0
Critical hours	2160.0	2126.3	2208.0	2209.0	1556.1	2183.0	2177.4	1720.9
Indicator value	0.8	0.9	0.9	0	0	0	0	0

Licensee Comments: none

Scrams with Loss of Normal Heat Removal



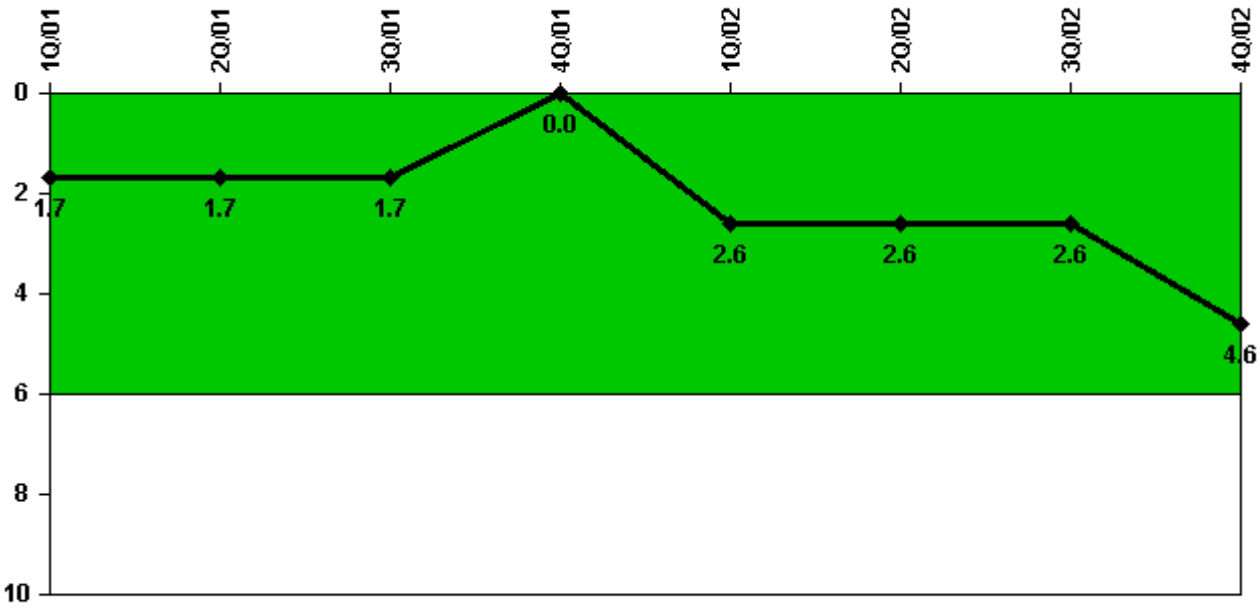
Thresholds: White > 2.0 Yellow > 10.0 Red > 20.0

Notes

Scrams with Loss of Normal Heat Removal	1Q/01	2Q/01	3Q/01	4Q/01	1Q/02	2Q/02	3Q/02	4Q/02
Scrams	0	0	0	0	0	0	0	0
Indicator value	0	0	0	0	0	0	0	0

Licensee Comments: none

Unplanned Power Changes per 7000 Critical Hrs



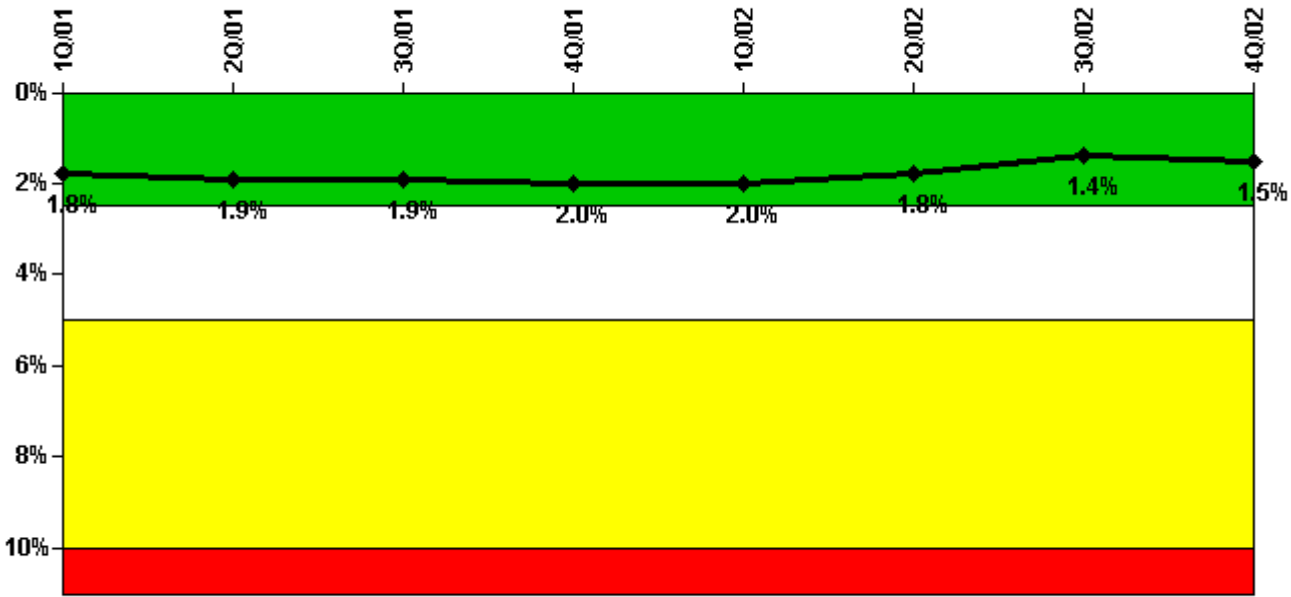
Thresholds: White > 6.0

Notes

Unplanned Power Changes per 7000 Critical Hrs	1Q/01	2Q/01	3Q/01	4Q/01	1Q/02	2Q/02	3Q/02	4Q/02
Unplanned power changes	0	0	0	0	3.0	0	0	2.0
Critical hours	2160.0	2126.3	2208.0	2209.0	1556.1	2183.0	2177.4	1720.9
Indicator value	1.7	1.7	1.7	0	2.6	2.6	2.6	4.6

Licensee Comments: none

Safety System Unavailability, Emergency AC Power



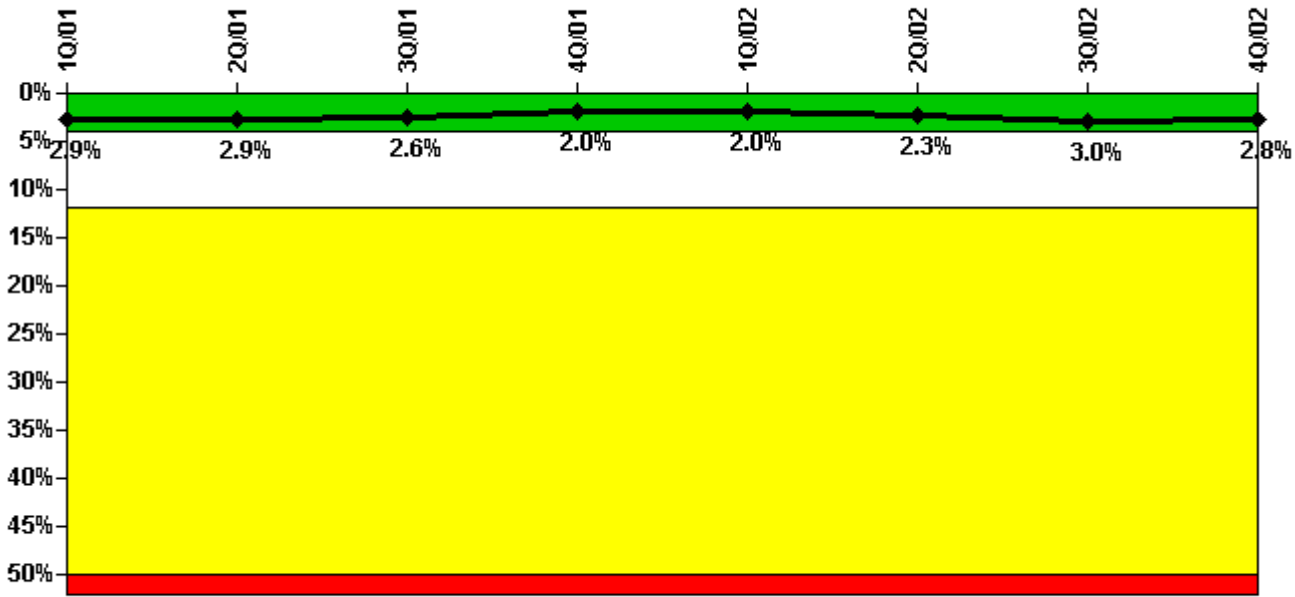
Thresholds: White > 2.5% Yellow > 5.0% Red > 10.0%

Notes

Safety System Unavailability, Emergency AC Power	1Q/01	2Q/01	3Q/01	4Q/01	1Q/02	2Q/02	3Q/02	4Q/02
Train 1								
Planned unavailable hours	35.25	15.30	20.60	53.68	4.75	53.98	22.60	16.72
Unplanned unavailable hours	0	0	0	0	0	0	0	0
Fault exposure hours	0	0	0	0	0	0	0	0
Effective Reset hours	0	0	0	0	0	0	0	0
Required hours	2160.00	2183.00	2208.00	2209.00	2160.00	2183.00	2208.00	2209.00
Train 2								
Planned unavailable hours	37.35	54.20	23.77	20.97	21.33	18.28	18.68	86.15
Unplanned unavailable hours	2.62	0	1.63	0	0	0	0	20.15
Fault exposure hours	0	0	0	0	0	0	0	0
Effective Reset hours	0	0	0	0	0	0	0	0
Required hours	2160.00	2183.00	2208.00	2209.00	2160.00	2183.00	2208.00	2209.00
Indicator value	1.8%	1.9%	1.9%	2.0%	2.0%	1.8%	1.4%	1.5%

Licensee Comments: none

Safety System Unavailability, High Pressure Injection System (HPCI)



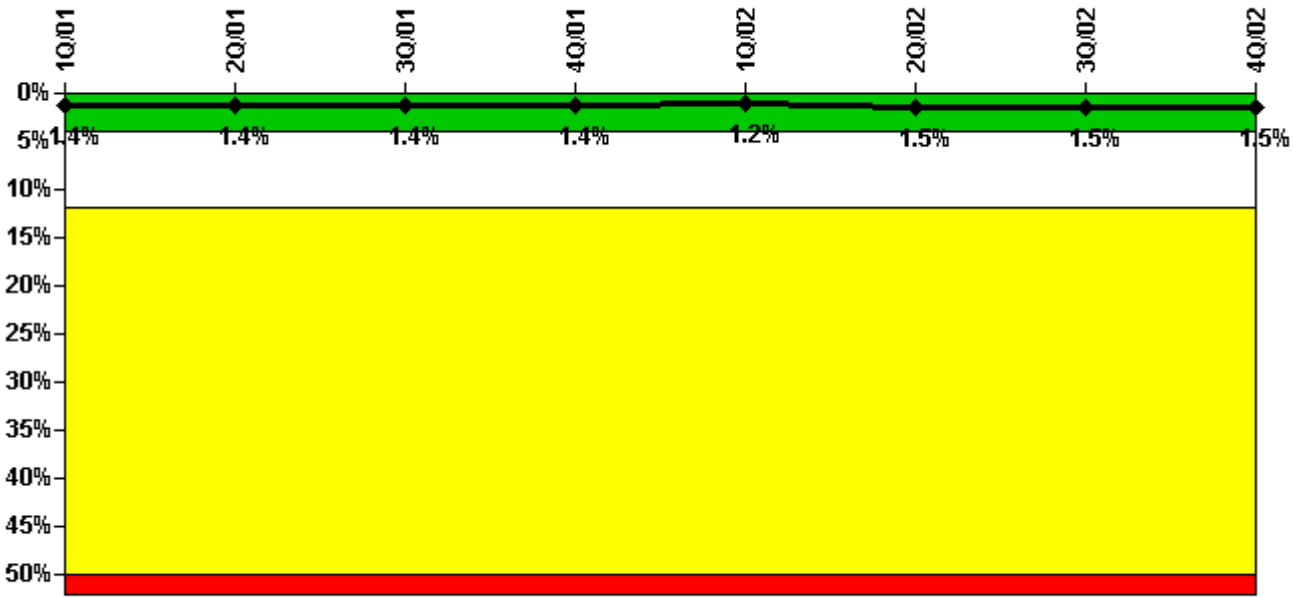
Thresholds: White > 4.0% Yellow > 12.0% Red > 50.0%

Notes

Safety System Unavailability, High Pressure Injection System (HPCI)	1Q/01	2Q/01	3Q/01	4Q/01	1Q/02	2Q/02	3Q/02	4Q/02
Train 1								
Planned unavailable hours	10.45	45.17	5.50	4.91	7.84	70.82	2.96	8.08
Unplanned unavailable hours	0	0	0	0	0	0	218.98	37.30
Fault exposure hours	0	0	0	0	0	0	0	0
Effective Reset hours	5439.80	0	0	0	0	0	0	0
Required hours	2160.00	2126.30	2208.00	2209.00	1556.10	2183.00	2177.40	1720.90
Indicator value	2.9%	2.9%	2.6%	2.0%	2.0%	2.3%	3.0%	2.8%

Licensee Comments: none

Safety System Unavailability, Heat Removal System (RCIC)



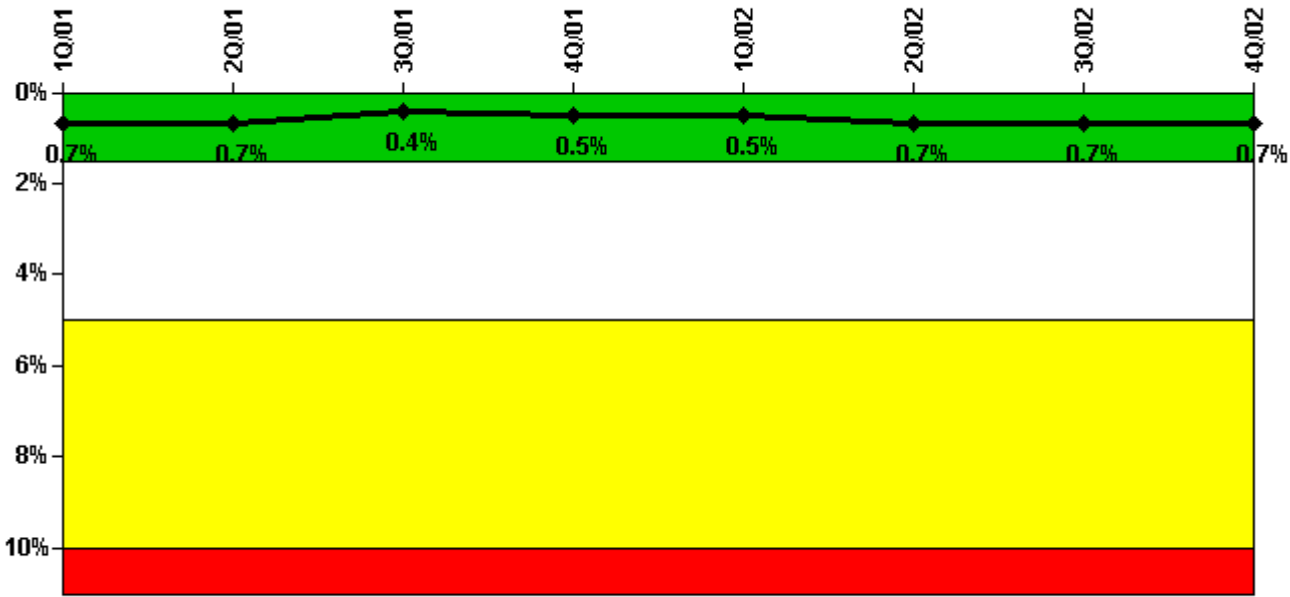
Thresholds: White > 4.0% Yellow > 12.0% Red > 50.0%

Notes

Safety System Unavailability, Heat Removal System (RCIC)	1Q/01	2Q/01	3Q/01	4Q/01	1Q/02	2Q/02	3Q/02	4Q/02
Train 1								
Planned unavailable hours	43.32	22.88	8.44	5.59	5.42	100.99	2.81	4.15
Unplanned unavailable hours	0	0	0	9.20	0	0	6.88	33.37
Fault exposure hours	0	0	0	12.00	0	0	0	0
Effective Reset hours	0	0	0	0	0	0	0	0
Required hours	2160.00	2126.30	2208.00	2209.00	1556.10	2183.00	2177.40	1720.90
Indicator value	1.4%	1.4%	1.4%	1.4%	1.2%	1.5%	1.5%	1.5%

Licensee Comments: none

Safety System Unavailability, Residual Heat Removal System



Thresholds: White > 1.5% Yellow > 5.0% Red > 10.0%

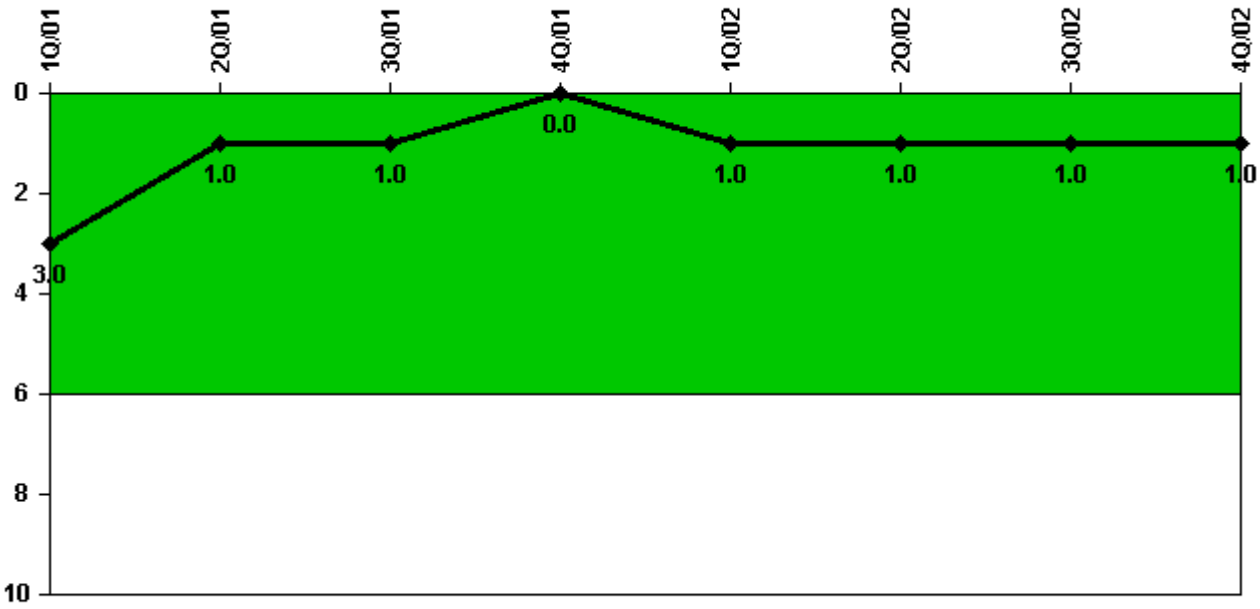
Notes

Safety System Unavailability, Residual Heat Removal System	1Q/01	2Q/01	3Q/01	4Q/01	1Q/02	2Q/02	3Q/02	4Q/02
Train 1								
Planned unavailable hours	47.75	0	0	34.57	0	106.30	47.29	0
Unplanned unavailable hours	0	0	0	0	0	0	0	0
Fault exposure hours	0	0	0	0	0	0	0	0
Effective Reset hours	0	0	0	0	0	0	0	0
Required hours	2160.00	2183.00	2208.00	2209.00	2160.00	2183.00	2208.00	2209.00
Train 2								
Planned unavailable hours	27.92	0	0	25.10	0	0	0	31.80
Unplanned unavailable hours	0	0	0	0	0	0	0	0
Fault exposure hours	0	0	0	0	0	0	0	0
Effective Reset hours	0	0	0	0	0	0	0	0
Required hours	2160.00	2183.00	2208.00	2209.00	2160.00	2183.00	2208.00	2209.00
Indicator value	0.7%	0.7%	0.4%	0.5%	0.5%	0.7%	0.7%	0.7%

Licensee Comments:

4Q/02: Three years (26280 hours) of T/2 Fault Exposure Unavailability are reported for this indicator in this comment section. During a refuel outage, a door for a potential transformer fuse drawer fell open, indicating the door had not been fully latched. Had a seismic event occurred, this door may have opened, causing the bus to lose voltage. With the door open, the bus would not have provided power to its loads, including the Residual Heat Removal pumps for that loop. Since it cannot be determined when the door was last fully latched, the T/2 Fault Exposure Unavailability being reported is the maximum allowed by NEI 99-02 guidance.

Safety System Functional Failures (BWR)



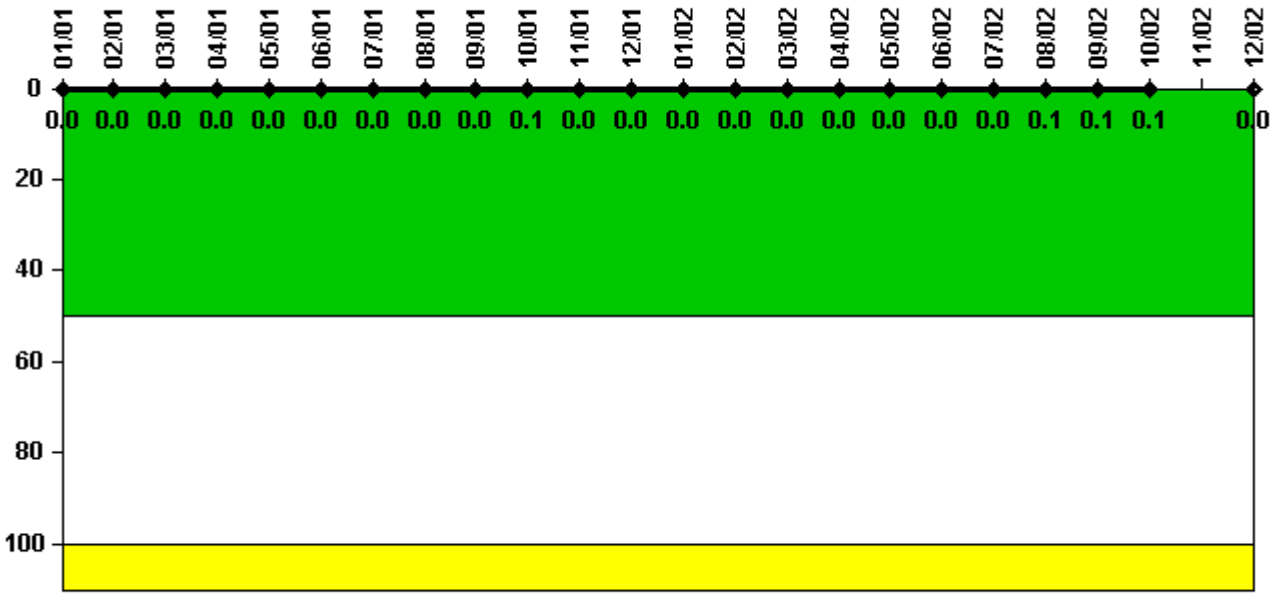
Thresholds: White > 6.0

Notes

Safety System Functional Failures (BWR)	1Q/01	2Q/01	3Q/01	4Q/01	1Q/02	2Q/02	3Q/02	4Q/02
Safety System Functional Failures	0	0	0	0	1	0	0	0
Indicator value	3	1	1	0	1	1	1	1

Licensee Comments: none

Reactor Coolant System Activity



Thresholds: White > 50.0 Yellow > 100.0

Notes

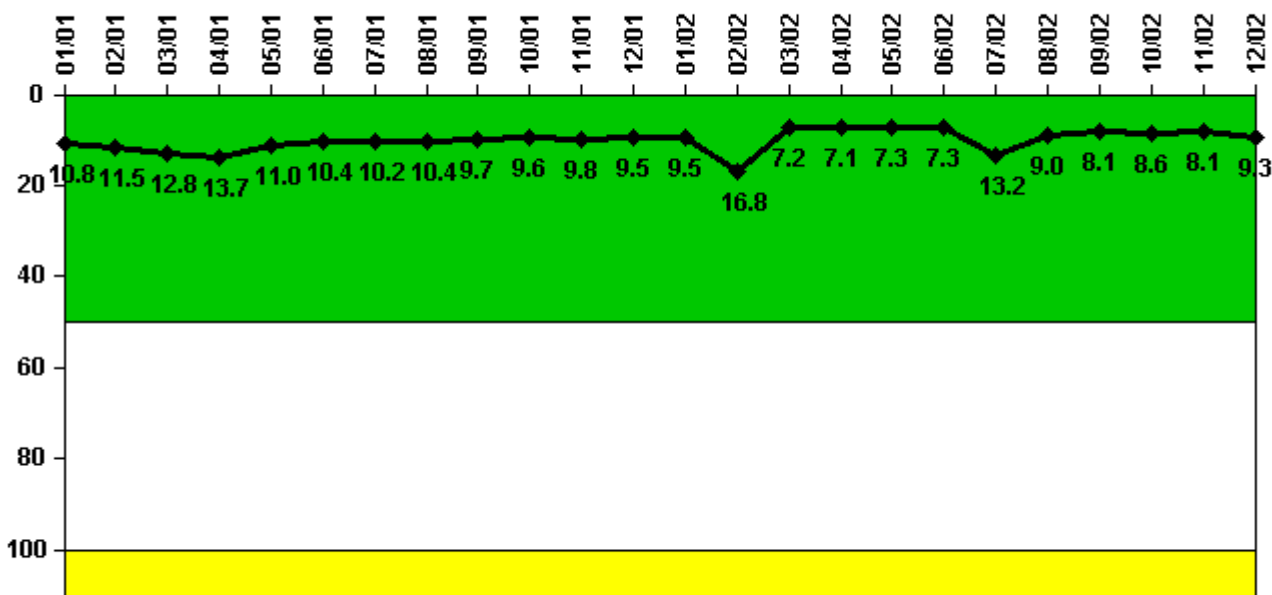
Reactor Coolant System Activity	1/01	2/01	3/01	4/01	5/01	6/01	7/01	8/01	9/01	10/01	11/01	12/01
Maximum activity	0.000043	0.000084	0.000044	0.000039	0.000063	0.000056	0.000055	0.000082	0.000067	0.000171	0.000041	0.000043
Technical specification limit	0.2	0.2	0.2	0.2	0.2	0.2	0.2	0.2	0.2	0.2	0.2	0.2
Indicator value	0	0	0	0	0	0	0	0	0	0.1	0	0

Reactor Coolant System Activity	1/02	2/02	3/02	4/02	5/02	6/02	7/02	8/02	9/02	10/02	11/02	12/02
Maximum activity	0.000050	0.000024	0.000044	0.000043	0.000089	0.000063	0.000075	0.000123	0.000144	0.000217	N/A	0.000047
Technical specification limit	0.2	0.2	0.2	0.2	0.2	0.2	0.2	0.2	0.2	0.2	0.2	0.2
Indicator value	0	0	0	0	0	0	0	0.1	0.1	0.1	N/A	0

Licensee Comments:

12/02: Unit 1 was in a refuel outage for a large portion of November 2002. There were no samples taken during November 2002 that met the criteria for reporting (i.e., taken when the station was in a steady-state condition).

Reactor Coolant System Leakage



Thresholds: White > 50.0 Yellow > 100.0

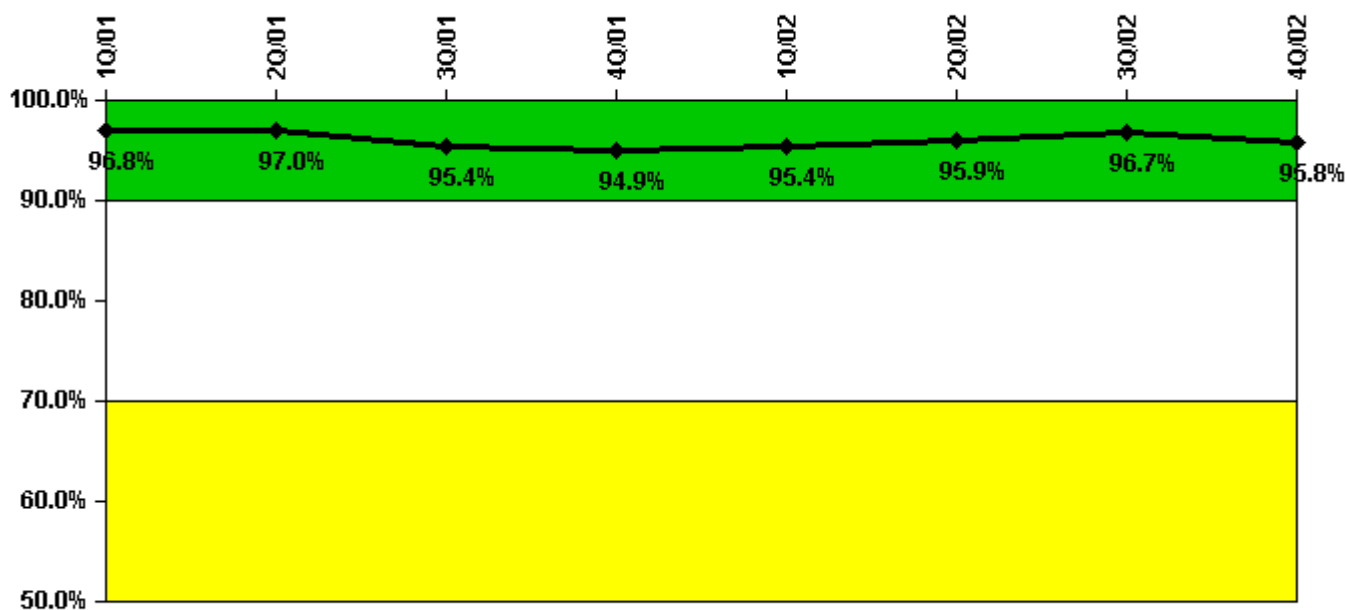
Notes

Reactor Coolant System Leakage	1/01	2/01	3/01	4/01	5/01	6/01	7/01	8/01	9/01	10/01	11/01	12/01
Maximum leakage	2.710	2.870	3.210	3.420	2.750	2.590	2.550	2.590	2.420	2.410	2.440	2.370
Technical specification limit	25.0	25.0	25.0	25.0	25.0	25.0	25.0	25.0	25.0	25.0	25.0	25.0
Indicator value	10.8	11.5	12.8	13.7	11.0	10.4	10.2	10.4	9.7	9.6	9.8	9.5

Reactor Coolant System Leakage	1/02	2/02	3/02	4/02	5/02	6/02	7/02	8/02	9/02	10/02	11/02	12/02
Maximum leakage	2.380	4.210	1.800	1.780	1.830	1.830	3.300	2.240	2.030	2.140	2.020	2.320
Technical specification limit	25.0	25.0	25.0	25.0	25.0	25.0	25.0	25.0	25.0	25.0	25.0	25.0
Indicator value	9.5	16.8	7.2	7.1	7.3	7.3	13.2	9.0	8.1	8.6	8.1	9.3

Licensee Comments: none

Drill/Exercise Performance



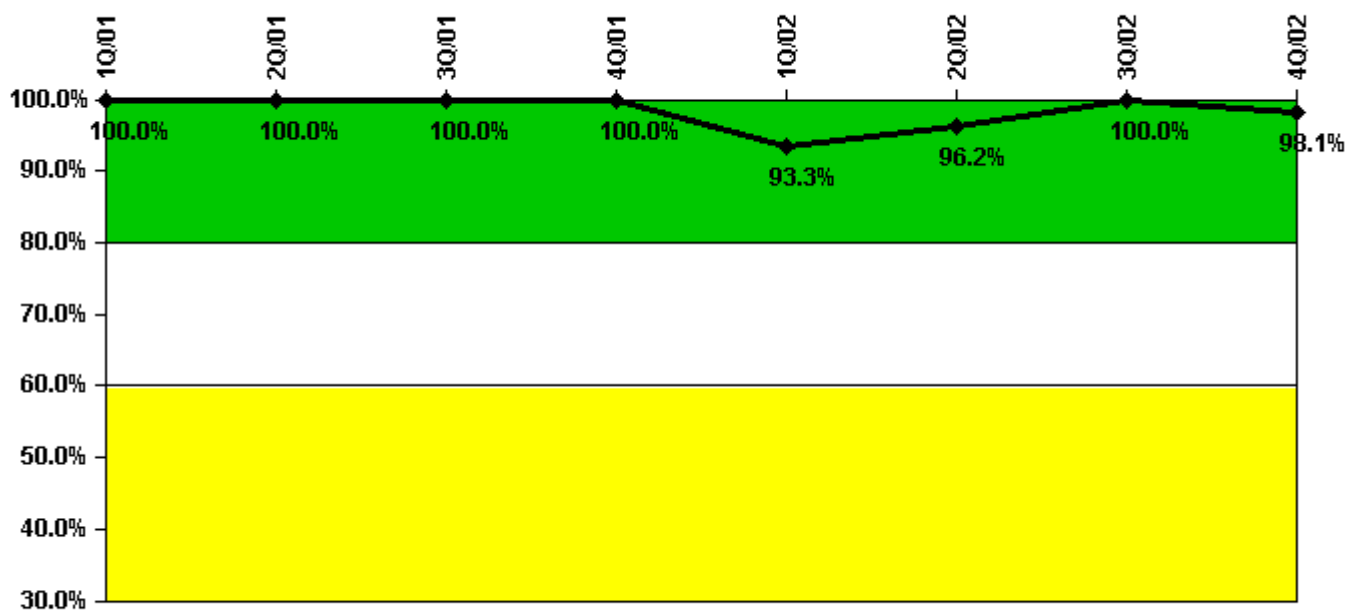
Thresholds: White < 90.0% Yellow < 70.0%

Notes

Drill/Exercise Performance	1Q/01	2Q/01	3Q/01	4Q/01	1Q/02	2Q/02	3Q/02	4Q/02
Successful opportunities	0	45.0	7.0	48.0	0	43.0	55.0	30.0
Total opportunities	0	46.0	10.0	50.0	0	44.0	56.0	32.0
Indicator value	96.8%	97.0%	95.4%	94.9%	95.4%	95.9%	96.7%	95.8%

Licensee Comments: none

ERO Drill Participation



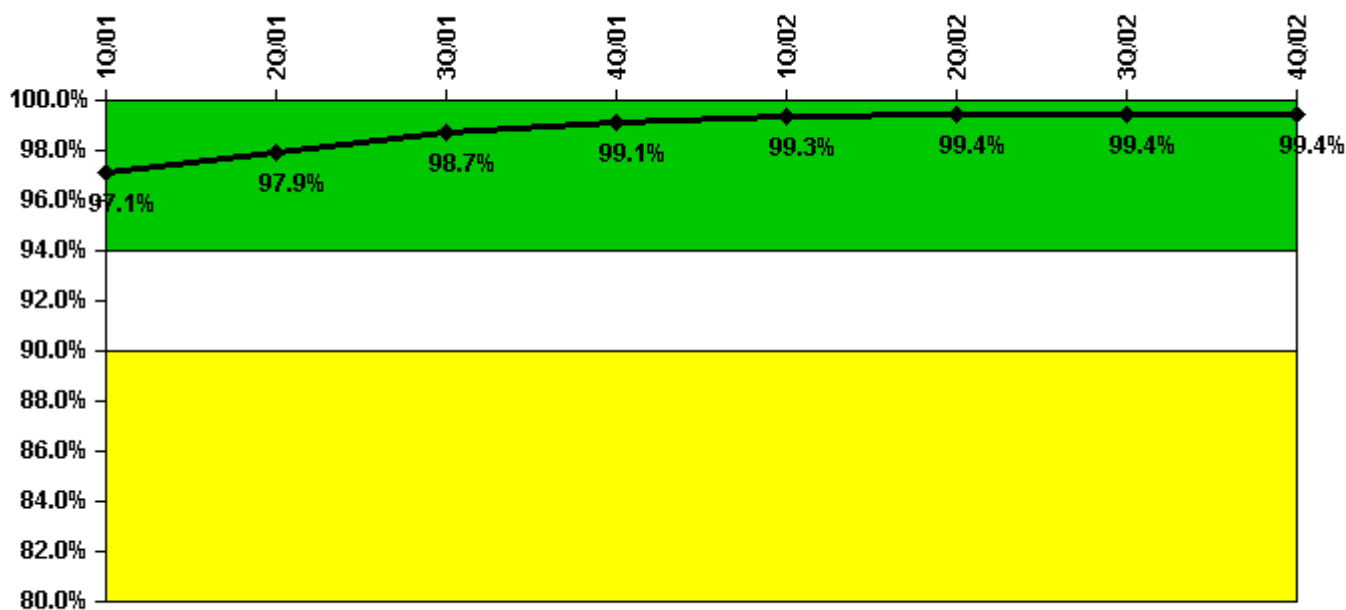
Thresholds: White < 80.0% Yellow < 60.0%

Notes

ERO Drill Participation	1Q/01	2Q/01	3Q/01	4Q/01	1Q/02	2Q/02	3Q/02	4Q/02
Participating Key personnel	65.0	66.0	67.0	56.0	42.0	51.0	54.0	52.0
Total Key personnel	65.0	66.0	67.0	56.0	45.0	53.0	54.0	53.0
Indicator value	100.0%	100.0%	100.0%	100.0%	93.3%	96.2%	100.0%	98.1%

Licensee Comments: none

Alert & Notification System



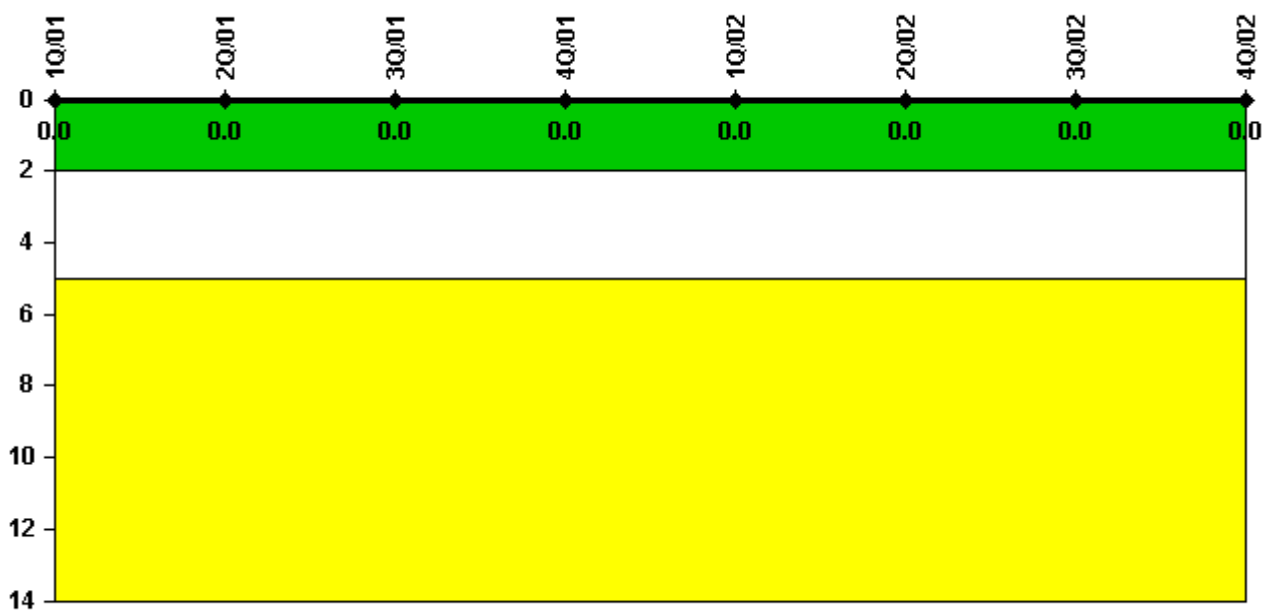
Thresholds: White < 94.0% Yellow < 90.0%

Notes

Alert & Notification System	1Q/01	2Q/01	3Q/01	4Q/01	1Q/02	2Q/02	3Q/02	4Q/02
Successful siren-tests	3436	3453	3405	3311	3256	3313	3301	3306
Total sirens-tests	3484	3484	3432	3328	3276	3328	3328	3328
Indicator value	97.1%	97.9%	98.7%	99.1%	99.3%	99.4%	99.4%	99.4%

Licensee Comments: none

Occupational Exposure Control Effectiveness



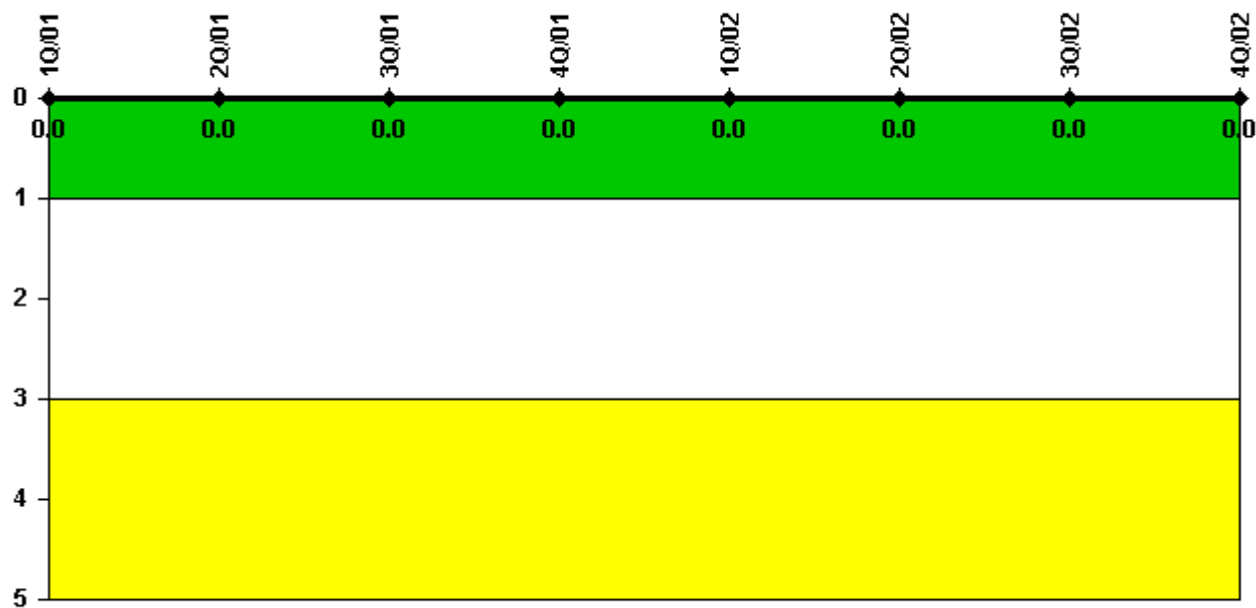
Thresholds: White > 2.0 Yellow > 5.0

Notes

Occupational Exposure Control Effectiveness	1Q/01	2Q/01	3Q/01	4Q/01	1Q/02	2Q/02	3Q/02	4Q/02
High radiation area occurrences	0	0	0	0	0	0	0	0
Very high radiation area occurrences	0	0	0	0	0	0	0	0
Unintended exposure occurrences	0	0	0	0	0	0	0	0
Indicator value	0	0	0	0	0	0	0	0

Licensee Comments: none

RETS/ODCM Radiological Effluent



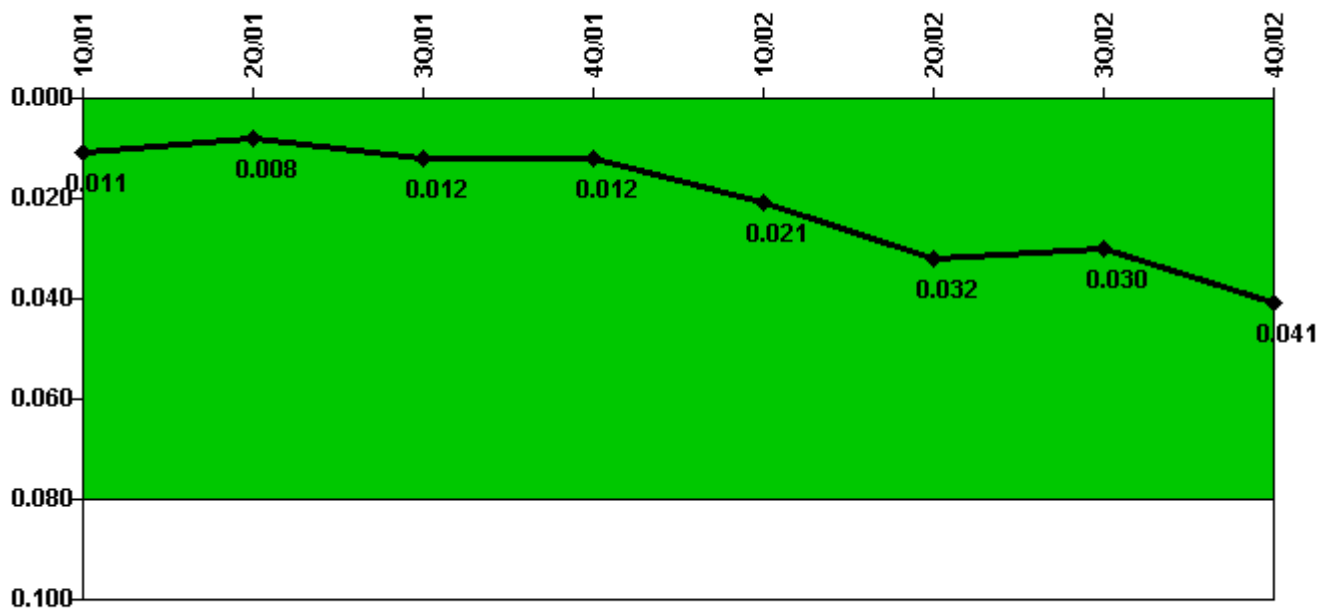
Thresholds: White > 1.0 Yellow > 3.0

Notes

RETS/ODCM Radiological Effluent	1Q/01	2Q/01	3Q/01	4Q/01	1Q/02	2Q/02	3Q/02	4Q/02
RETS/ODCM occurrences	0	0	0	0	0	0	0	0
Indicator value	0	0	0	0	0	0	0	0

Licensee Comments: none

Protected Area Security Performance Index



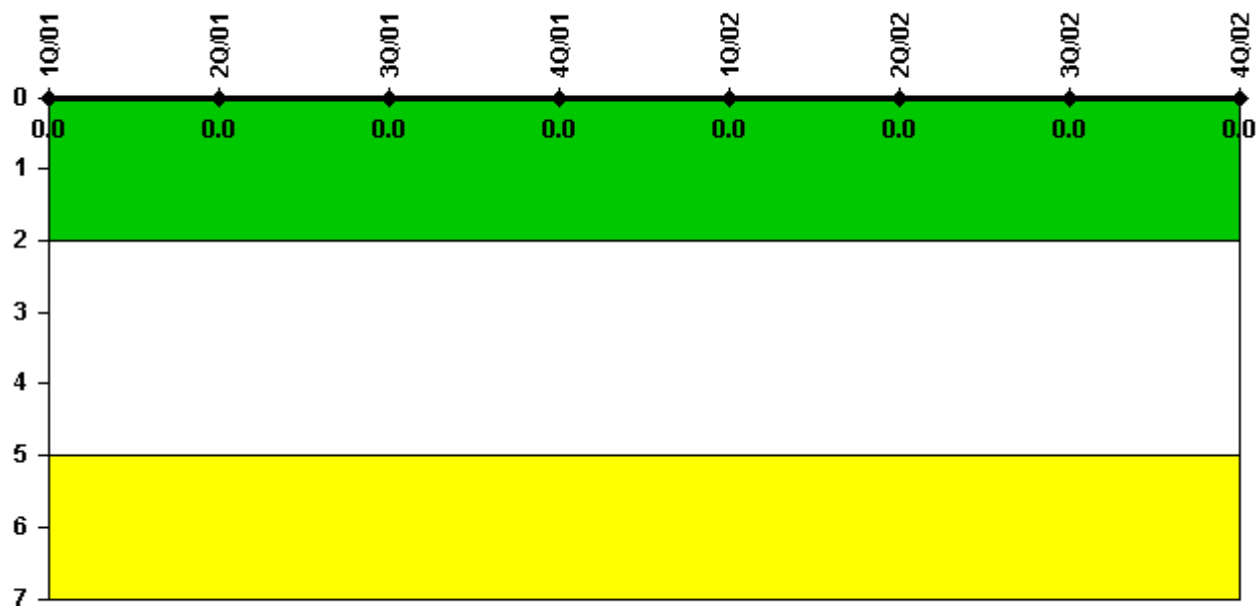
Thresholds: White > 0.080

Notes

Protected Area Security Performance Index	1Q/01	2Q/01	3Q/01	4Q/01	1Q/02	2Q/02	3Q/02	4Q/02
IDS compensatory hours	30.70	37.60	80.50	46.40	192.60	221.90	61.20	200.10
CCTV compensatory hours	0.1	0	13.9	1.4	0	0.3	1.6	39.5
IDS normalization factor	1.00	1.00	1.00	1.00	1.00	1.00	1.00	1.00
CCTV normalization factor	1.0	1.0	1.0	1.0	1.0	1.0	1.0	1.0
Index Value	0.011	0.008	0.012	0.012	0.021	0.032	0.030	0.041

Licensee Comments: none

Personnel Screening Program



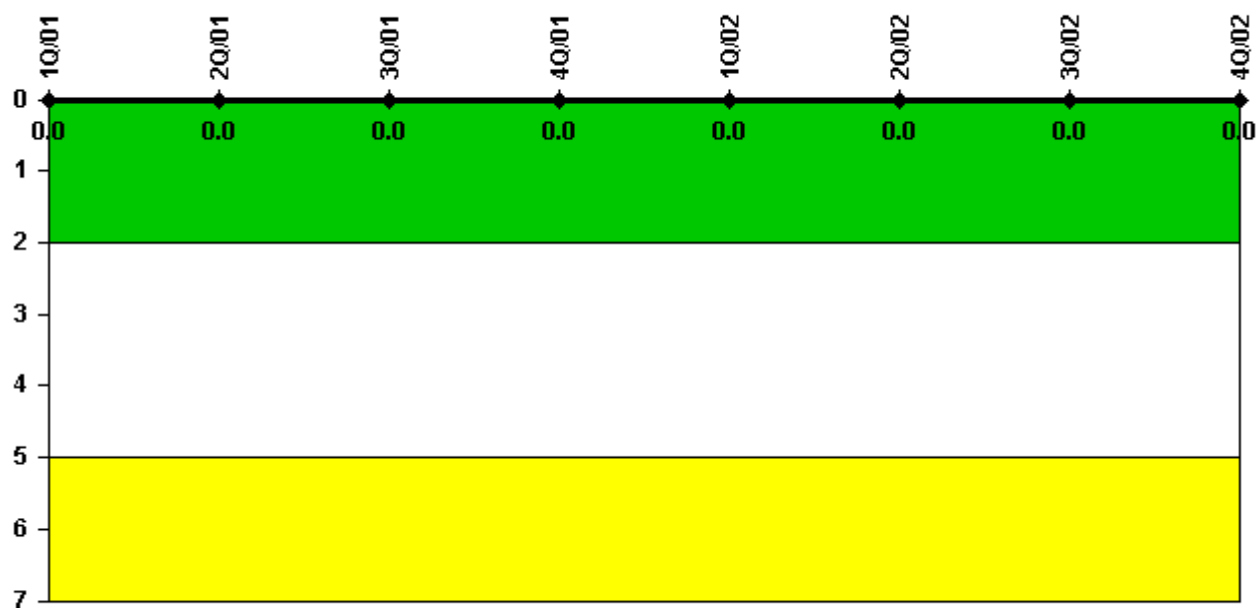
Thresholds: White > 2.0 Yellow > 5.0

Notes

Personnel Screening Program	1Q/01	2Q/01	3Q/01	4Q/01	1Q/02	2Q/02	3Q/02	4Q/02
Program failures	0	0	0	0	0	0	0	0
Indicator value	0	0	0	0	0	0	0	0

Licensee Comments: none

FFD/Personnel Reliability



Thresholds: White > 2.0 Yellow > 5.0

Notes

FFD/Personnel Reliability	1Q/01	2Q/01	3Q/01	4Q/01	1Q/02	2Q/02	3Q/02	4Q/02
Program Failures	0	0	0	0	0	0	0	0
Indicator value	0	0	0	0	0	0	0	0

Licensee Comments: none

▲ [PI Summary](#) | [Inspection Findings Summary](#) | [Reactor Oversight Process](#)

Last Modified: January 30, 2003