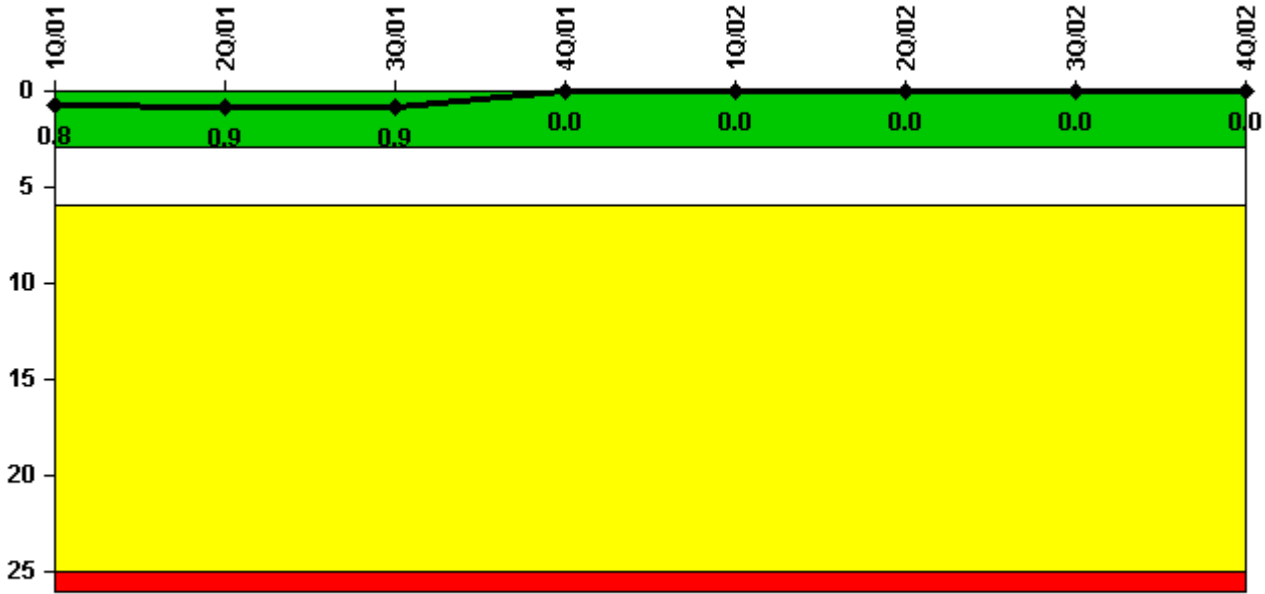


# Point Beach 1

## 4Q/2002 Performance Indicators

Licensee's General Comments: none

### Unplanned Scrams per 7000 Critical Hrs



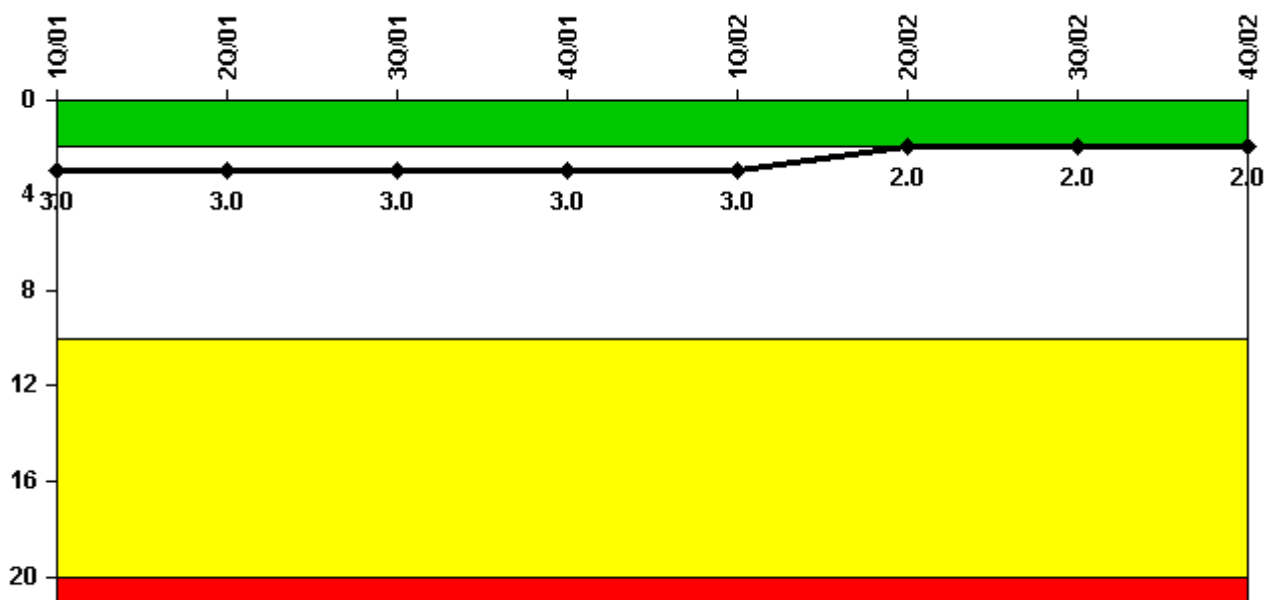
Thresholds: White > 3.0 Yellow > 6.0 Red > 25.0

### Notes

Unplanned Scrams per 7000 Critical Hrs	1Q/01	2Q/01	3Q/01	4Q/01	1Q/02	2Q/02	3Q/02	4Q/02
Unplanned scrams	0	0	0	0	0	0	0	0
Critical hours	2160.0	1349.8	1961.6	2209.0	2160.0	2183.0	1802.5	1844.1
Indicator value	0.8	0.9	0.9	0	0	0	0	0

Licensee Comments: none

### Scrams with Loss of Normal Heat Removal



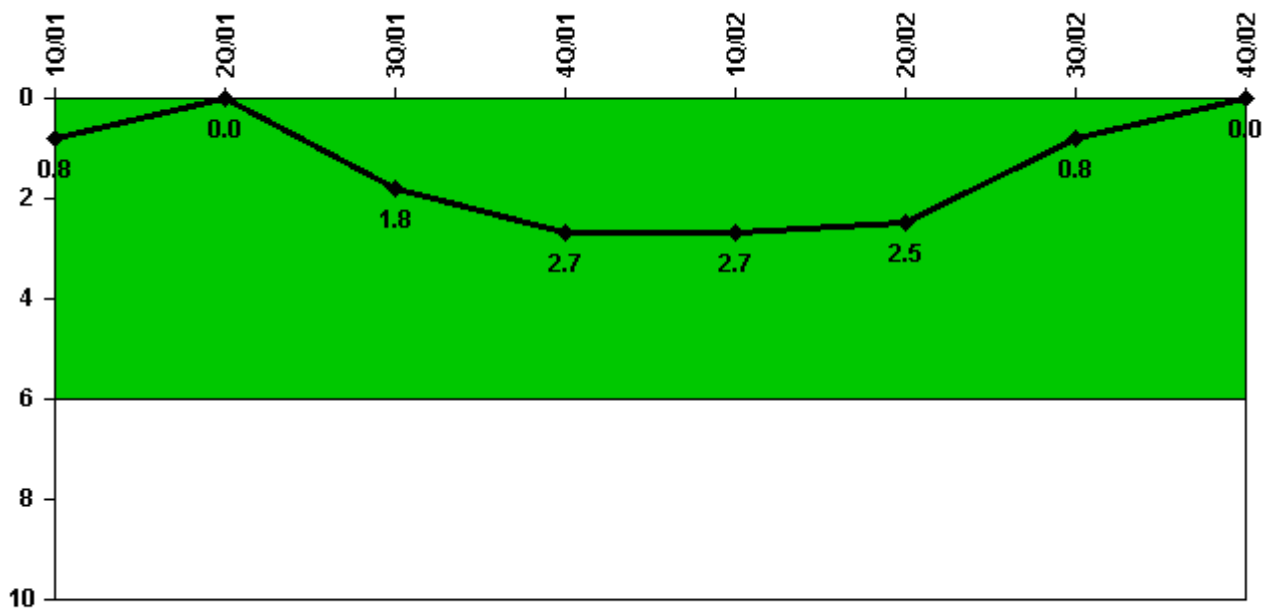
Thresholds: White > 2.0 Yellow > 10.0 Red > 20.0

#### Notes

Scrams with Loss of Normal Heat Removal	1Q/01	2Q/01	3Q/01	4Q/01	1Q/02	2Q/02	3Q/02	4Q/02
Scrams	0	0	0	0	0	0	0	0
Indicator value	3.0	3.0	3.0	3.0	3.0	2.0	2.0	2.0

Licensee Comments: none

### Unplanned Power Changes per 7000 Critical Hrs



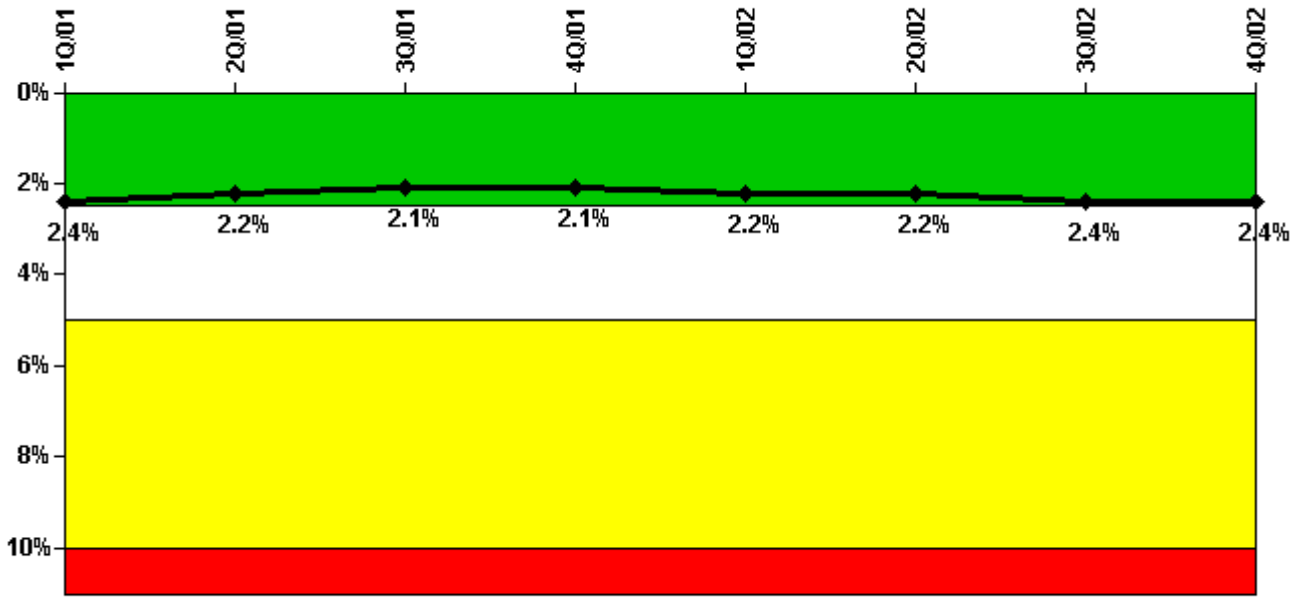
Thresholds: White > 6.0

#### Notes

Unplanned Power Changes per 7000 Critical Hrs	1Q/01	2Q/01	3Q/01	4Q/01	1Q/02	2Q/02	3Q/02	4Q/02
Unplanned power changes	0	0	2.0	1.0	0	0	0	0
Critical hours	2160.0	1349.8	1961.6	2209.0	2160.0	2183.0	1802.5	1844.1
Indicator value	0.8	0	1.8	2.7	2.7	2.5	0.8	0

Licensee Comments: none

### Safety System Unavailability, Emergency AC Power



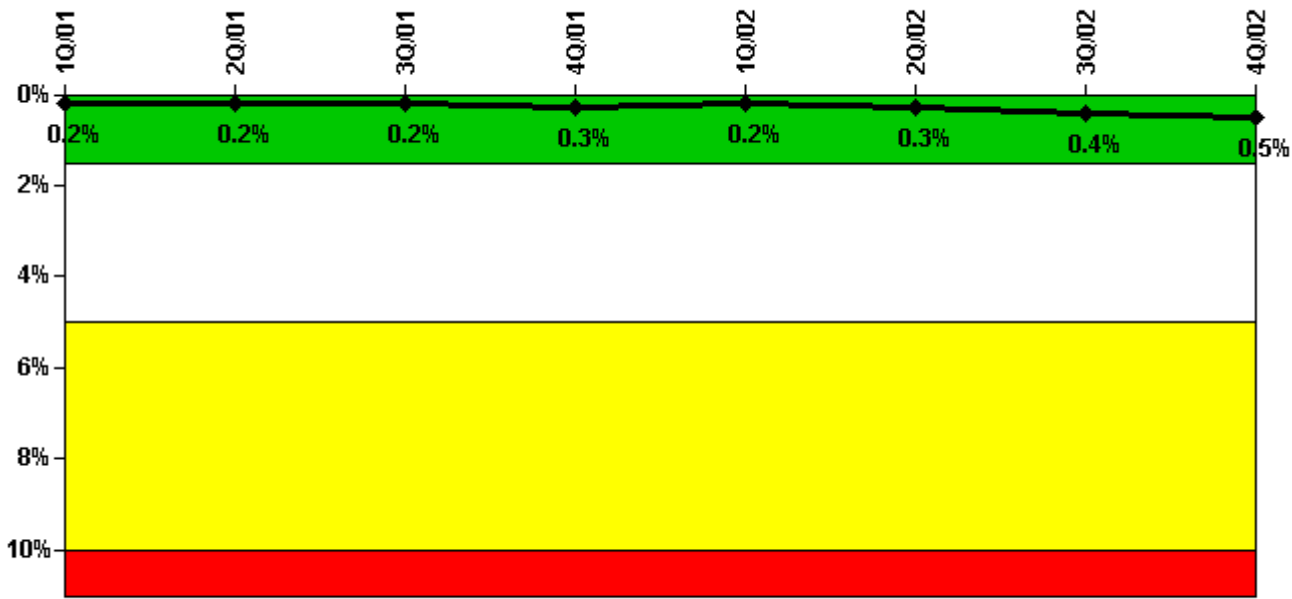
Thresholds: White > 2.5% Yellow > 5.0% Red > 10.0%

#### Notes

Safety System Unavailability, Emergency AC Power	1Q/01	2Q/01	3Q/01	4Q/01	1Q/02	2Q/02	3Q/02	4Q/02
<b>Train 1</b>								
Planned unavailable hours	31.75	10.83	12.37	21.07	18.39	27.53	27.12	17.15
Unplanned unavailable hours	0	0	0	0	0	2.60	2.12	0
Fault exposure hours	0	0	0	0	0	0	0	0
Effective Reset hours	0	0	0	0	0	0	0	0
Required hours	2160.00	2183.00	2208.00	2209.00	2160.00	2183.00	2208.00	2209.00
<b>Train 2</b>								
Planned unavailable hours	49.82	24.47	22.59	24.60	13.76	16.02	68.57	10.97
Unplanned unavailable hours	0	0	0	0	1.98	0	2.20	0
Fault exposure hours	0	0	0	0	0	0	0	0
Effective Reset hours	0	0	0	0	0	0	0	0
Required hours	2160.00	2183.00	2208.00	2209.00	2160.00	2183.00	2208.00	2209.00
<b>Indicator value</b>	<b>2.4%</b>	<b>2.2%</b>	<b>2.1%</b>	<b>2.1%</b>	<b>2.2%</b>	<b>2.2%</b>	<b>2.4%</b>	<b>2.4%</b>

Licensee Comments: none

### Safety System Unavailability, High Pressure Injection System (HPSI)



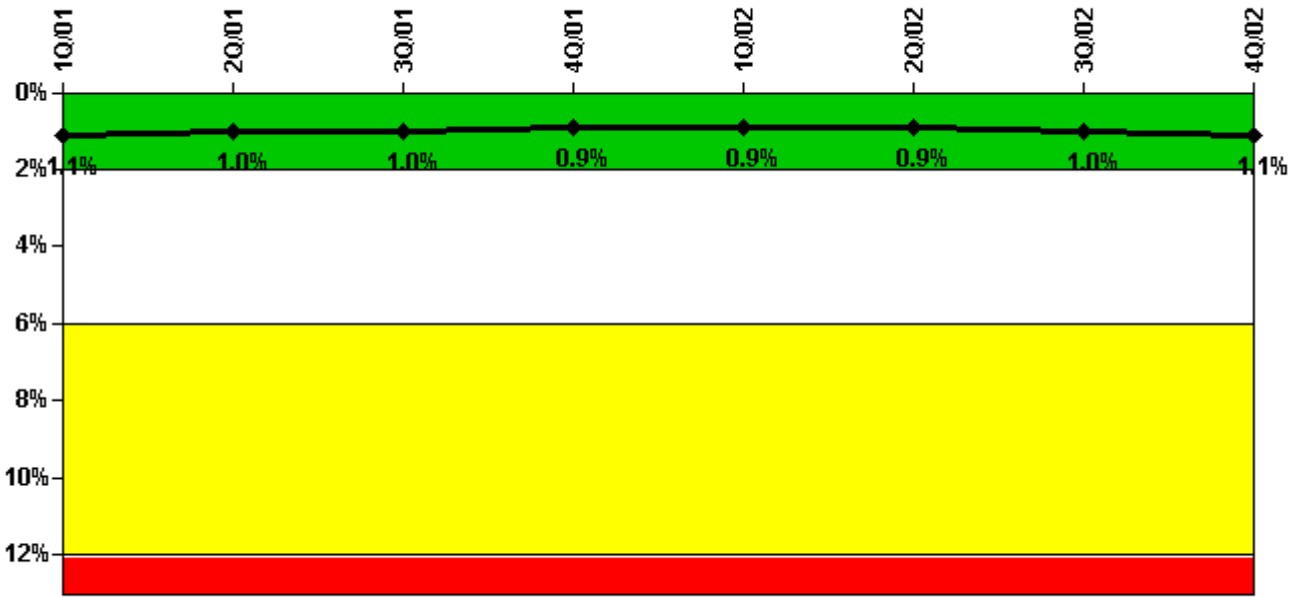
Thresholds: White > 1.5% Yellow > 5.0% Red > 10.0%

#### Notes

Safety System Unavailability, High Pressure Injection System (HPSI)	1Q/01	2Q/01	3Q/01	4Q/01	1Q/02	2Q/02	3Q/02	4Q/02
<b>Train 1</b>								
Planned unavailable hours	7.42	1.09	3.92	23.18	9.91	24.65	11.33	26.67
Unplanned unavailable hours	0	1.00	0	0	0	0	0	0
Fault exposure hours	0	0	0	0	0	0	0	0
Effective Reset hours	0	0	0	0	0	0	0	0
Required hours	2160.00	1344.60	1961.60	2209.00	2160.00	2183.00	1812.30	1910.00
<b>Train 2</b>								
Planned unavailable hours	6.53	0.30	2.34	12.57	11.27	24.08	13.17	19.38
Unplanned unavailable hours	0	0	0	0	0	0	0	0
Fault exposure hours	0	0	0	0	0	0	0	0
Effective Reset hours	0	0	0	0	0	0	0	0
Required hours	2160.00	1344.60	1961.60	2209.00	2160.00	2183.00	1812.30	1910.00
Indicator value	0.2%	0.2%	0.2%	0.3%	0.2%	0.3%	0.4%	0.5%

Licensee Comments: none

### Safety System Unavailability, Heat Removal System (AFW)



Thresholds: White > 2.0% Yellow > 6.0% Red > 12.0%

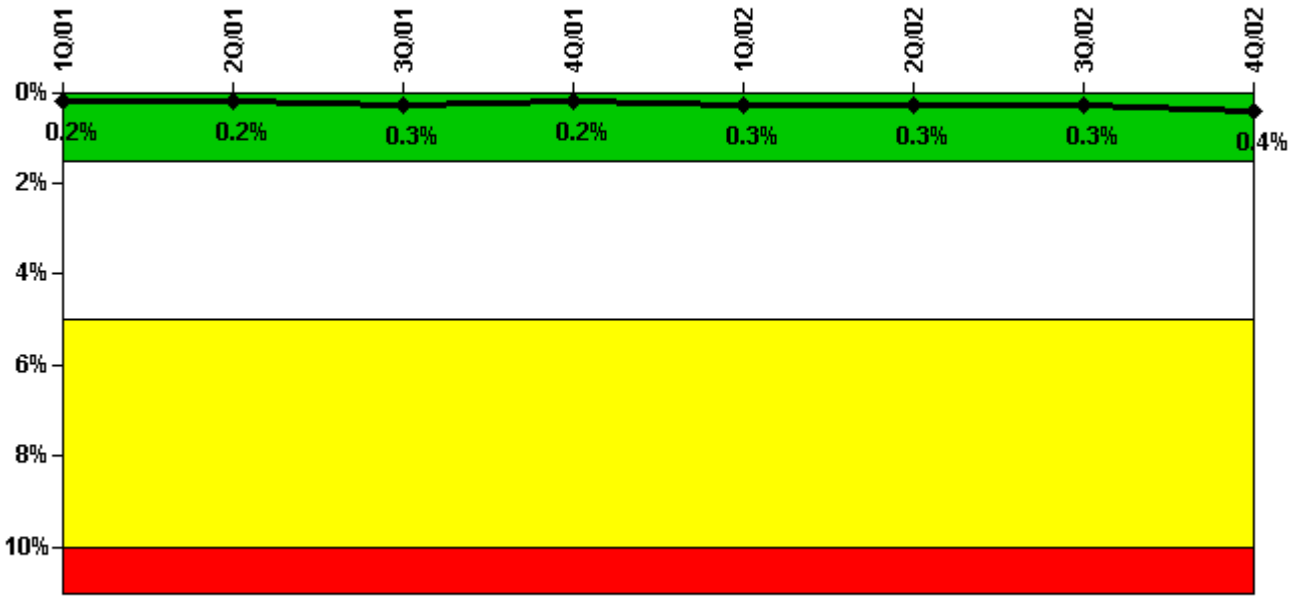
### Notes

Safety System Unavailability, Heat Removal System (AFW)	1Q/01	2Q/01	3Q/01	4Q/01	1Q/02	2Q/02	3Q/02	4Q/02
<b>Train 1</b>								
Planned unavailable hours	8.14	3.75	25.30	4.26	25.46	8.11	25.91	20.06
Unplanned unavailable hours	0	15.88	0	27.53	0	0	0	2.63
Fault exposure hours	0	0	0	13.23	0	0	0	0
Effective Reset hours	0	0	0	0	0	0	0	0
Required hours	2160.00	1478.95	2016.00	2209.00	2160.00	2183.00	1812.32	1910.00
<b>Train 2</b>								
Planned unavailable hours	23.50	2.50	6.60	3.23	12.90	12.80	3.73	43.19
Unplanned unavailable hours	16.20	0	0	0	0	0	0	2.63
Fault exposure hours	0	0	0	0	0	0	0	0
Effective Reset hours	0	0	0	0	0	0	0	0
Required hours	2160.00	1478.95	2016.00	2209.00	2160.00	2183.00	1812.32	1910.00
<b>Train 3</b>								
Planned unavailable hours	5.80	2.33	13.69	2.62	13.95	63.72	2.37	36.08
Unplanned unavailable hours	0.07	0	0	0	8.47	0	0	2.63
Fault exposure hours	0	0	0	0	0	0	0	0
Effective Reset hours	0	0	0	0	0	0	0	0
Required hours	2160.00	1478.95	2016.00	2209.00	2160.00	2183.00	1812.32	1910.00
<b>Indicator value</b>	<b>1.1%</b>	<b>1.0%</b>	<b>1.0%</b>	<b>0.9%</b>	<b>0.9%</b>	<b>0.9%</b>	<b>1.0%</b>	<b>1.1%</b>

Licensee Comments:

4Q/02: The SDP is addressing the impact of the AF pump recirculation line orifice potential for plugging, per NEI 99-02 Rev. 2, p. 33, lines 17-23. Engineering analysis is in progress to determine if trains were capable of performing their safety function during an operational event.

### Safety System Unavailability, Residual Heat Removal System



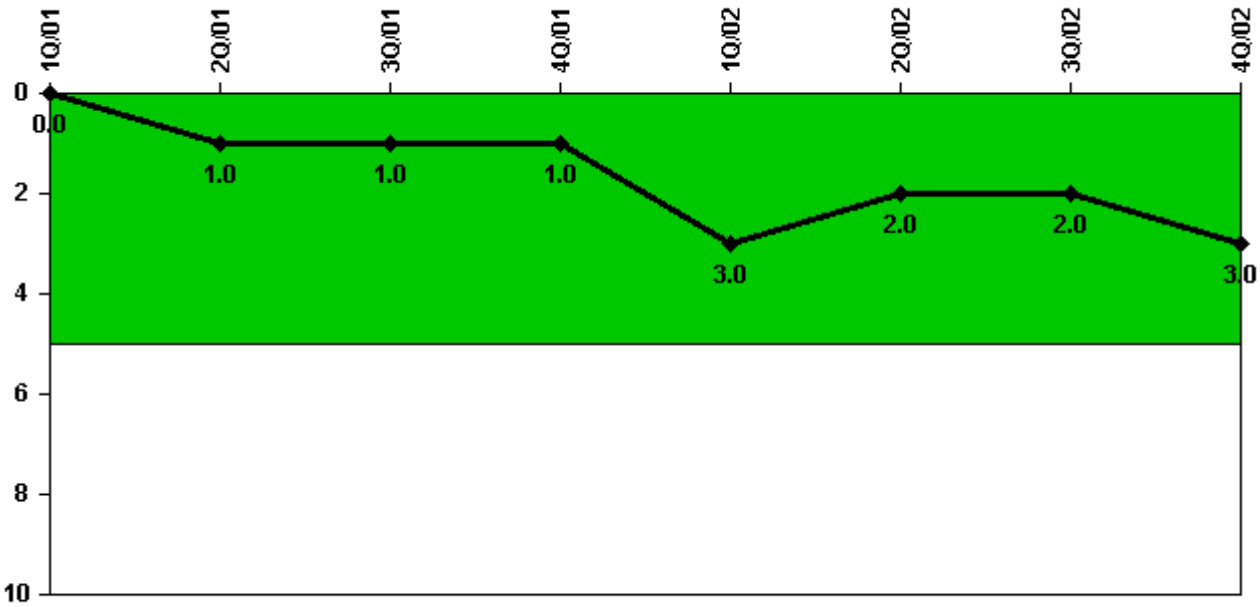
Thresholds: White > 1.5% Yellow > 5.0% Red > 10.0%

#### Notes

Safety System Unavailability, Residual Heat Removal System	1Q/01	2Q/01	3Q/01	4Q/01	1Q/02	2Q/02	3Q/02	4Q/02
<b>Train 1</b>								
Planned unavailable hours	19.00	8.60	28.22	3.24	27.81	0.85	20.64	13.61
Unplanned unavailable hours	0	0	0	0	0	0	0	0
Fault exposure hours	0	0	0	0	0	0	0	0
Effective Reset hours	0	0	0	0	0	0	0	0
Required hours	2160.00	1968.90	2208.00	2209.00	2160.00	2183.00	2140.70	2209.00
<b>Train 2</b>								
Planned unavailable hours	16.67	6.54	7.80	2.36	0.45	0.57	14.33	1.83
Unplanned unavailable hours	0	0	0	0	0	0	0	0
Fault exposure hours	0	0	0	0	0	0	0	0
Effective Reset hours	0	0	0	0	0	0	0	0
Required hours	2160.00	1968.90	2208.00	2209.00	2160.00	2183.00	2140.70	2209.00
<b>Indicator value</b>	0.2%	0.2%	0.3%	0.2%	0.3%	0.3%	0.3%	0.4%

Licensee Comments: none

### Safety System Functional Failures (PWR)



Thresholds: White > 5.0

#### Notes

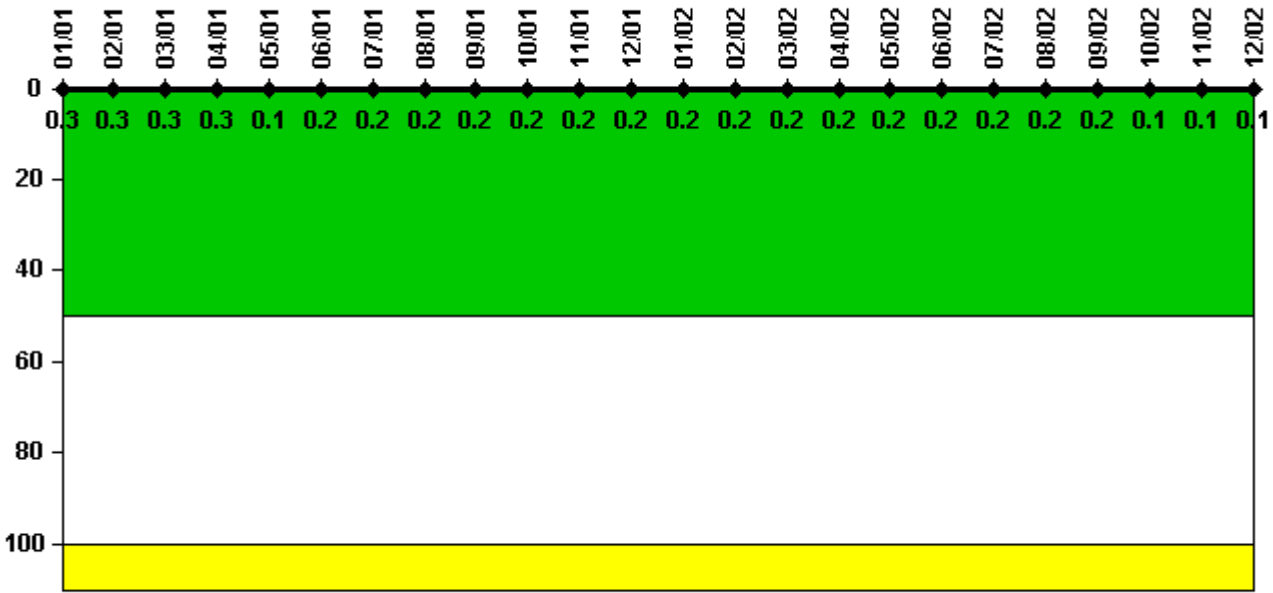
Safety System Functional Failures (PWR)	1Q/01	2Q/01	3Q/01	4Q/01	1Q/02	2Q/02	3Q/02	4Q/02
Safety System Functional Failures	0	1	0	0	2	0	0	1
Indicator value	0	1	1	1	3	2	2	3

Licensee Comments:

4Q/02: LER 266/2002-003-00, "Possible Common Mode Failure of AFW due to Partial Clogging of Recirc Orifices" will be reported as an SSFF, however, engineering analyses were incomplete at the time of LER submittal and may conclude that there was no loss of safety function when the LER is supplemented.



### Reactor Coolant System Activity



Thresholds: White > 50.0 Yellow > 100.0

### Notes

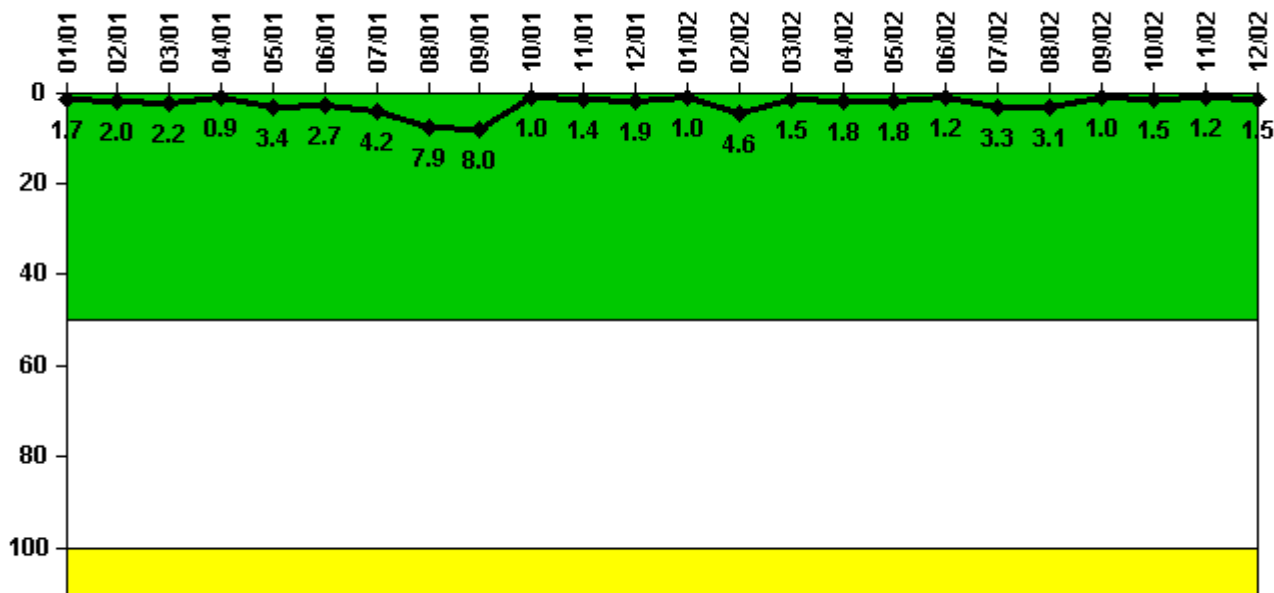
Reactor Coolant System Activity	1/01	2/01	3/01	4/01	5/01	6/01	7/01	8/01	9/01	10/01	11/01	12/01
Maximum activity	0.002210	0.002250	0.002320	0.002310	0.001100	0.001200	0.001260	0.001370	0.001250	0.001350	0.001420	0.001500
Technical specification limit	0.8	0.8	0.8	0.8	0.8	0.8	0.8	0.8	0.8	0.8	0.8	0.8
Indicator value	0.3	0.3	0.3	0.3	0.1	0.2	0.2	0.2	0.2	0.2	0.2	0.2

Reactor Coolant System Activity	1/02	2/02	3/02	4/02	5/02	6/02	7/02	8/02	9/02	10/02	11/02	12/02
Maximum activity	0.001530	0.001610	0.001650	0.001630	0.001720	0.001750	0.001780	0.001940	0.001820	0.000867	0.000945	0.000987
Technical specification limit	0.8	0.8	0.8	0.8	0.8	0.8	0.8	0.8	0.8	0.8	0.8	0.8
Indicator value	0.2	0.2	0.2	0.2	0.2	0.2	0.2	0.2	0.2	0.1	0.1	0.1

Licensee Comments: none

### Reactor Coolant System Leakage



Thresholds: White > 50.0 Yellow > 100.0

#### Notes

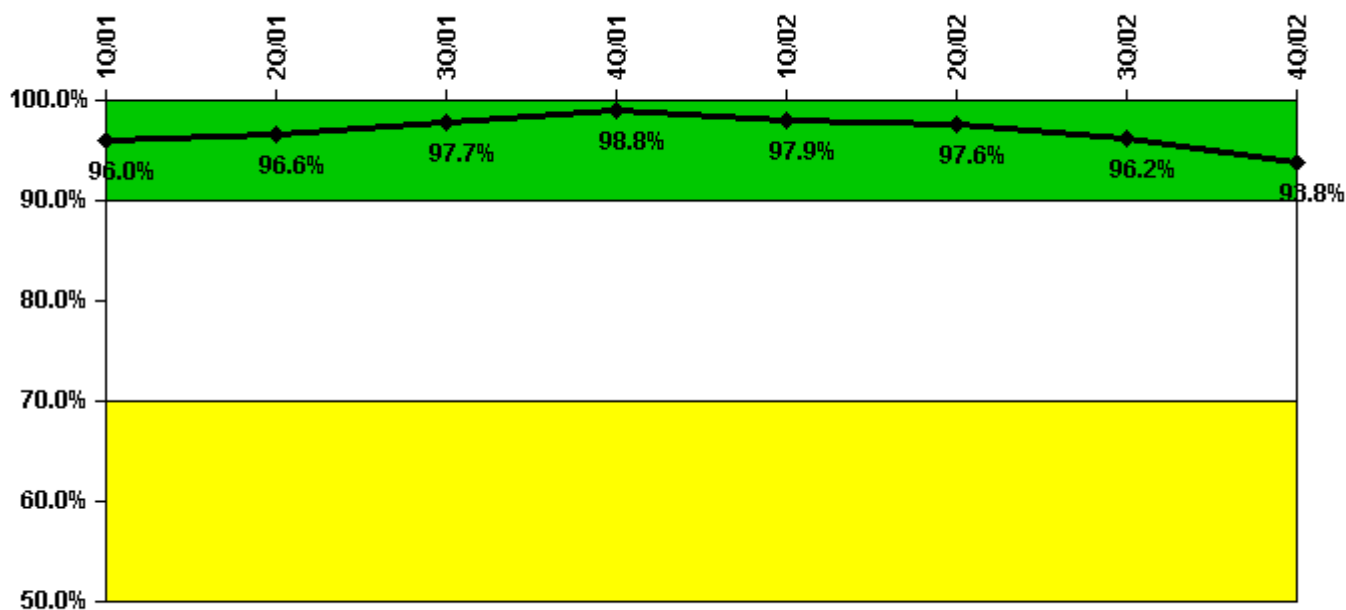
Reactor Coolant System Leakage	1/01	2/01	3/01	4/01	5/01	6/01	7/01	8/01	9/01	10/01	11/01	12/01
Maximum leakage	0.167	0.200	0.220	0.090	0.336	0.270	0.420	0.786	0.800	0.096	0.140	0.186
Technical specification limit	10.0	10.0	10.0	10.0	10.0	10.0	10.0	10.0	10.0	10.0	10.0	10.0
Indicator value	1.7	2.0	2.2	0.9	3.4	2.7	4.2	7.9	8.0	1.0	1.4	1.9

Reactor Coolant System Leakage	1/02	2/02	3/02	4/02	5/02	6/02	7/02	8/02	9/02	10/02	11/02	12/02
Maximum leakage	0.100	0.460	0.150	0.180	0.180	0.120	0.330	0.310	0.100	0.150	0.120	0.150
Technical specification limit	10.0	10.0	10.0	10.0	10.0	10.0	10.0	10.0	10.0	10.0	10.0	10.0
Indicator value	1.0	4.6	1.5	1.8	1.8	1.2	3.3	3.1	1.0	1.5	1.2	1.5

Licensee Comments: none

### Drill/Exercise Performance



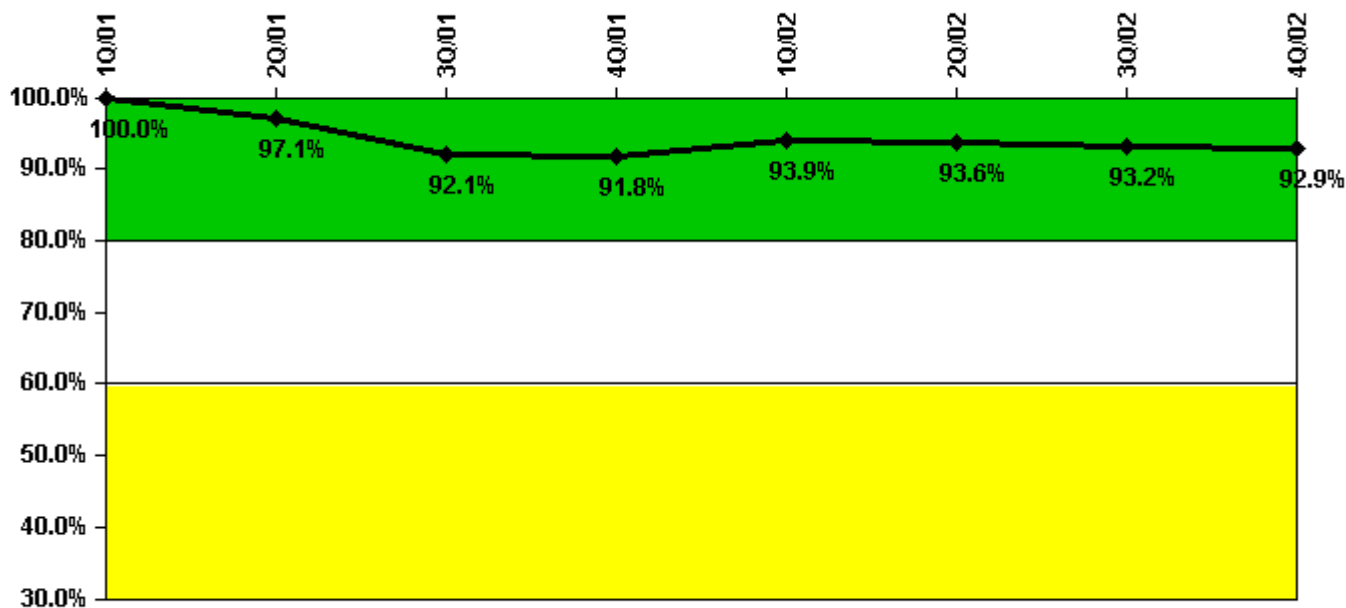
Thresholds: White < 90.0% Yellow < 70.0%

### Notes

Drill/Exercise Performance	1Q/01	2Q/01	3Q/01	4Q/01	1Q/02	2Q/02	3Q/02	4Q/02
Successful opportunities	4.0	2.0	4.0	15.0	11.0	0	9.0	0
Total opportunities	4.0	2.0	4.0	16.0	12.0	0	10.0	0
Indicator value	96.0%	96.6%	97.7%	98.8%	97.9%	97.6%	96.2%	93.8%

Licensee Comments: none

### ERO Drill Participation



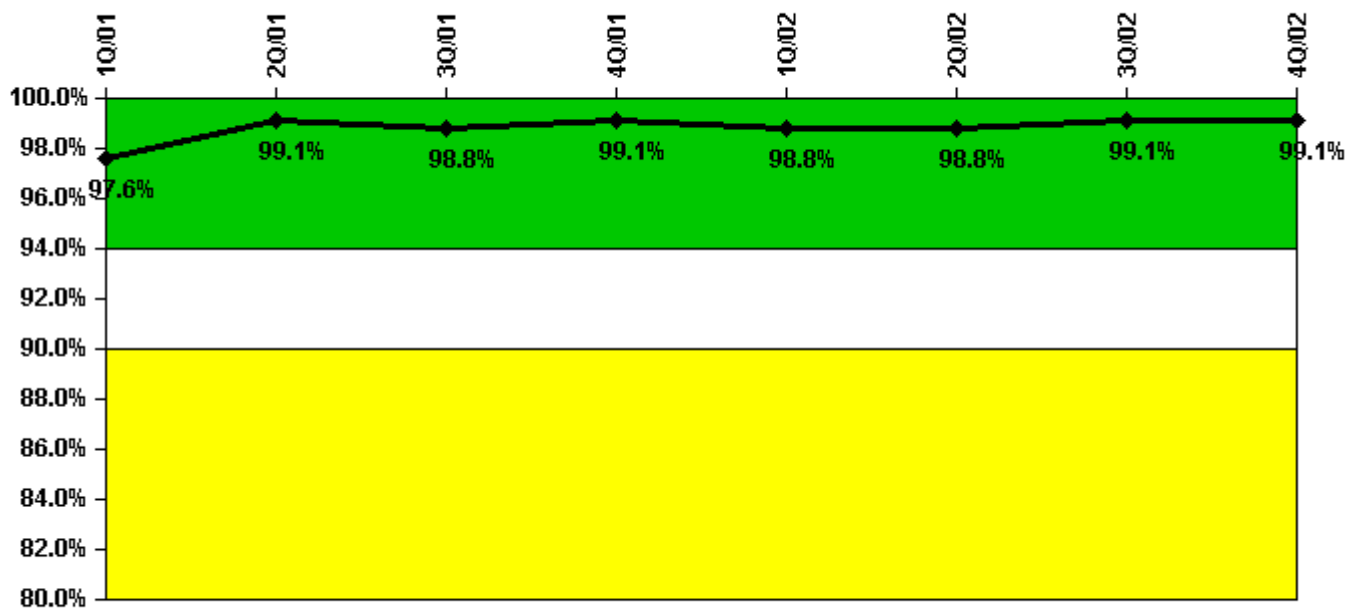
Thresholds: White < 80.0% Yellow < 60.0%

#### Notes

ERO Drill Participation	1Q/01	2Q/01	3Q/01	4Q/01	1Q/02	2Q/02	3Q/02	4Q/02
Participating Key personnel	35.0	34.0	35.0	45.0	46.0	44.0	41.0	39.0
Total Key personnel	35.0	35.0	38.0	49.0	49.0	47.0	44.0	42.0
Indicator value	100.0%	97.1%	92.1%	91.8%	93.9%	93.6%	93.2%	92.9%

Licensee Comments: none

### Alert & Notification System



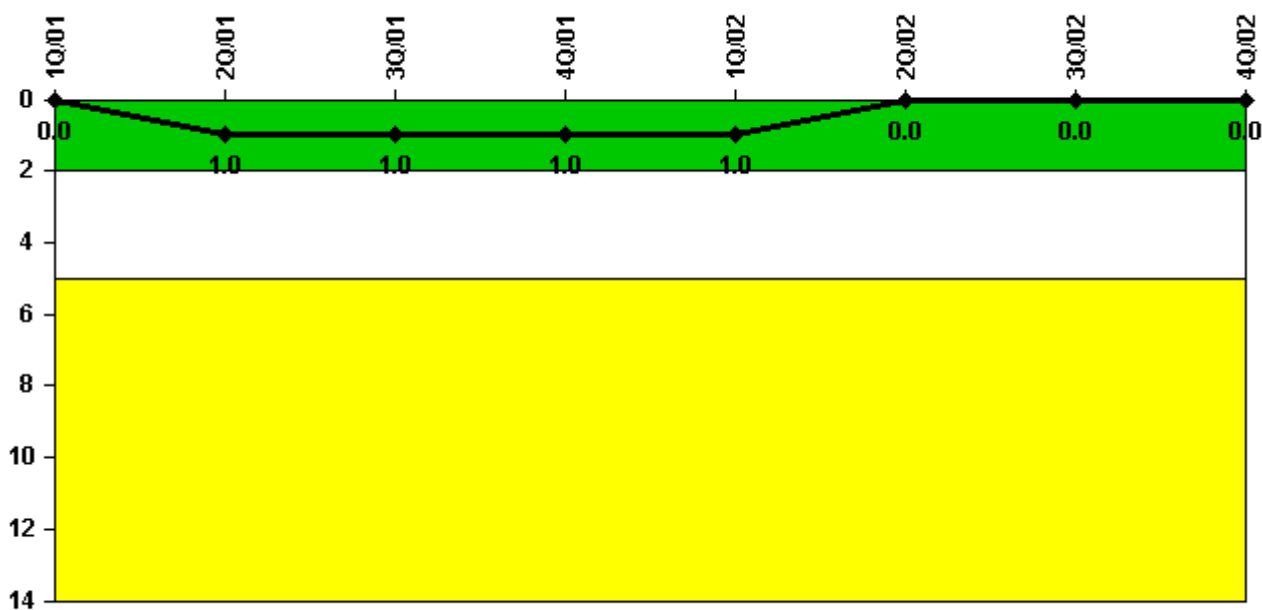
Thresholds: White < 94.0% Yellow < 90.0%

#### Notes

Alert & Notification System	1Q/01	2Q/01	3Q/01	4Q/01	1Q/02	2Q/02	3Q/02	4Q/02
Successful siren-tests	83	83	83	84	82	83	84	84
Total sirens-tests	84	84	84	84	84	84	84	84
Indicator value	97.6%	99.1%	98.8%	99.1%	98.8%	98.8%	99.1%	99.1%

Licensee Comments: none

### Occupational Exposure Control Effectiveness



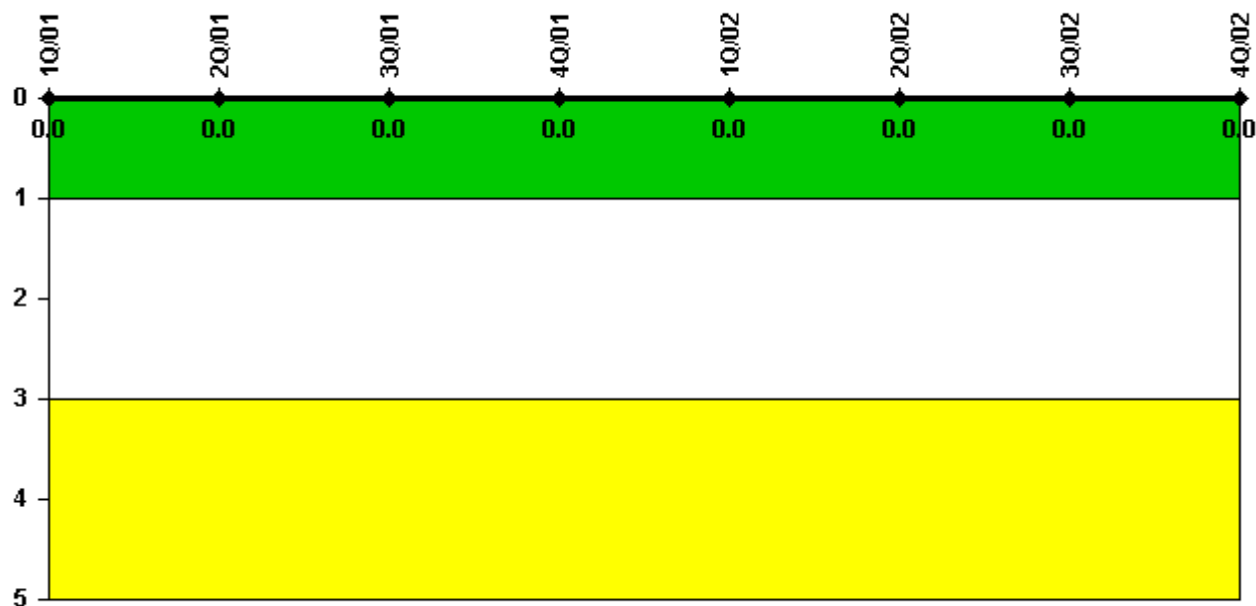
Thresholds: White > 2.0 Yellow > 5.0

#### Notes

Occupational Exposure Control Effectiveness	1Q/01	2Q/01	3Q/01	4Q/01	1Q/02	2Q/02	3Q/02	4Q/02
High radiation area occurrences	0	1	0	0	0	0	0	0
Very high radiation area occurrences	0	0	0	0	0	0	0	0
Unintended exposure occurrences	0	0	0	0	0	0	0	0
Indicator value	0	1	1	1	1	0	0	0

Licensee Comments: none

### RETS/ODCM Radiological Effluent



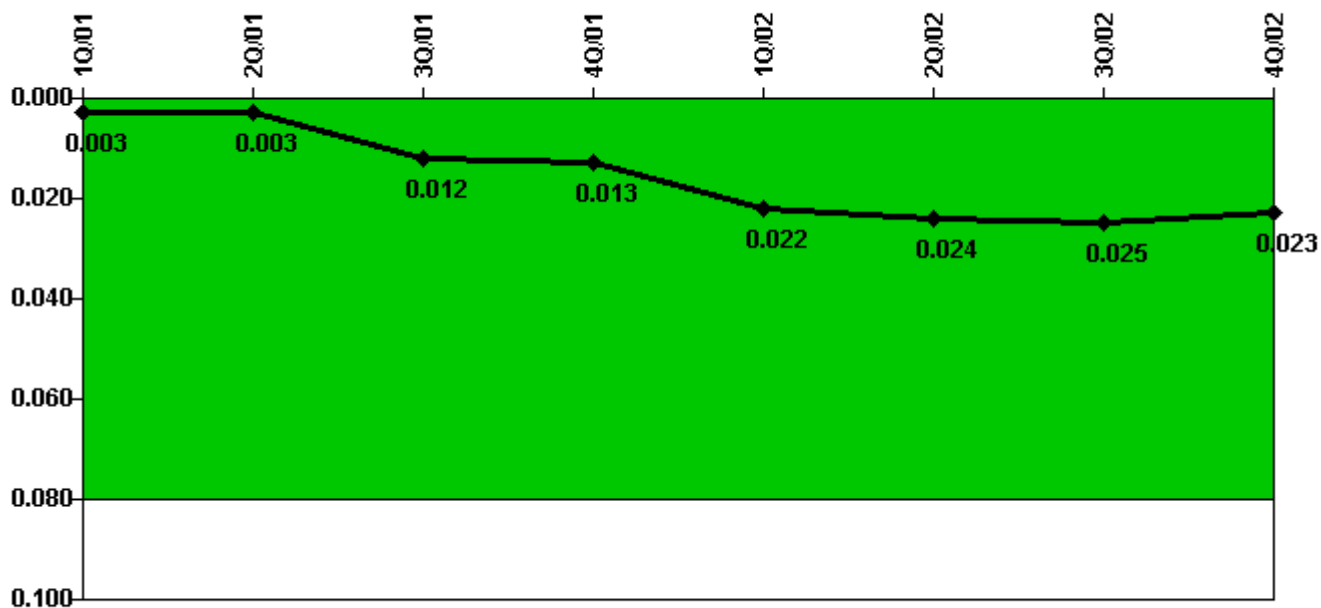
Thresholds: White > 1.0 Yellow > 3.0

#### Notes

RETS/ODCM Radiological Effluent	1Q/01	2Q/01	3Q/01	4Q/01	1Q/02	2Q/02	3Q/02	4Q/02
RETS/ODCM occurrences	0	0	0	0	0	0	0	0
Indicator value	0	0	0	0	0	0	0	0

Licensee Comments: none

### Protected Area Security Performance Index



Thresholds: White > 0.080

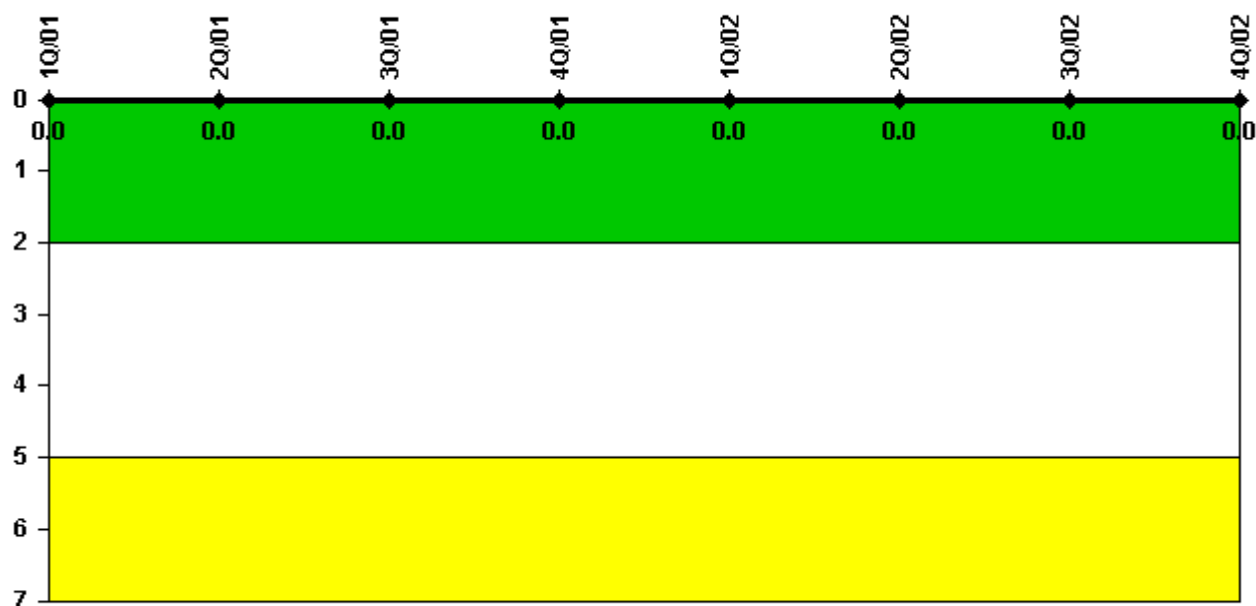
#### Notes

Protected Area Security Performance Index	1Q/01	2Q/01	3Q/01	4Q/01	1Q/02	2Q/02	3Q/02	4Q/02
IDS compensatory hours	19.50	0	109.90	71.30	187.20	51.30	129.90	27.30
CCTV compensatory hours	7.6	0	58.0	0	19.8	0.1	56.4	0.5
IDS normalization factor	1.20	1.20	1.20	1.20	1.20	1.20	1.20	1.20
CCTV normalization factor	1.0	1.0	1.0	1.0	1.0	1.0	1.0	1.0
<b>Index Value</b>	<b>0.003</b>	<b>0.003</b>	<b>0.012</b>	<b>0.013</b>	<b>0.022</b>	<b>0.024</b>	<b>0.025</b>	<b>0.023</b>

Licensee Comments: none



### Personnel Screening Program



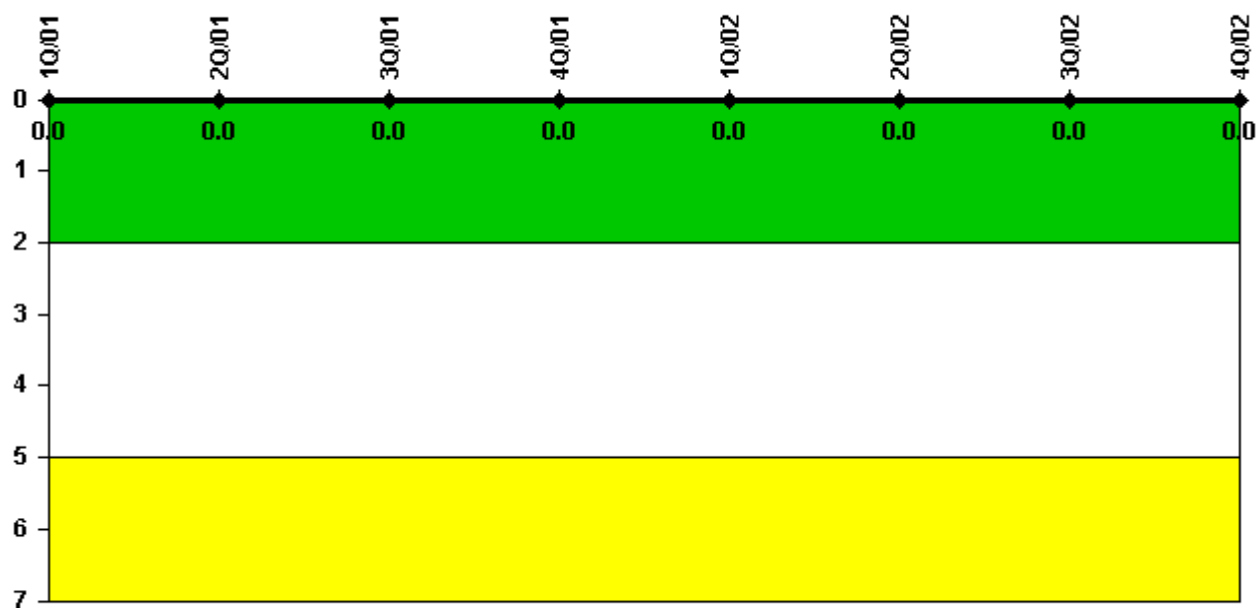
Thresholds: White > 2.0 Yellow > 5.0

#### Notes

Personnel Screening Program	1Q/01	2Q/01	3Q/01	4Q/01	1Q/02	2Q/02	3Q/02	4Q/02
Program failures	0	0	0	0	0	0	0	0
Indicator value	0	0	0	0	0	0	0	0

Licensee Comments: none

### FFD/Personnel Reliability



Thresholds: White > 2.0 Yellow > 5.0

### Notes

FFD/Personnel Reliability	1Q/01	2Q/01	3Q/01	4Q/01	1Q/02	2Q/02	3Q/02	4Q/02
Program Failures	0	0	0	0	0	0	0	0
Indicator value	0	0	0	0	0	0	0	0

Licensee Comments: none

▲ [PI Summary](#) | [Inspection Findings Summary](#) | [Reactor Oversight Process](#)

Last Modified: January 30, 2003