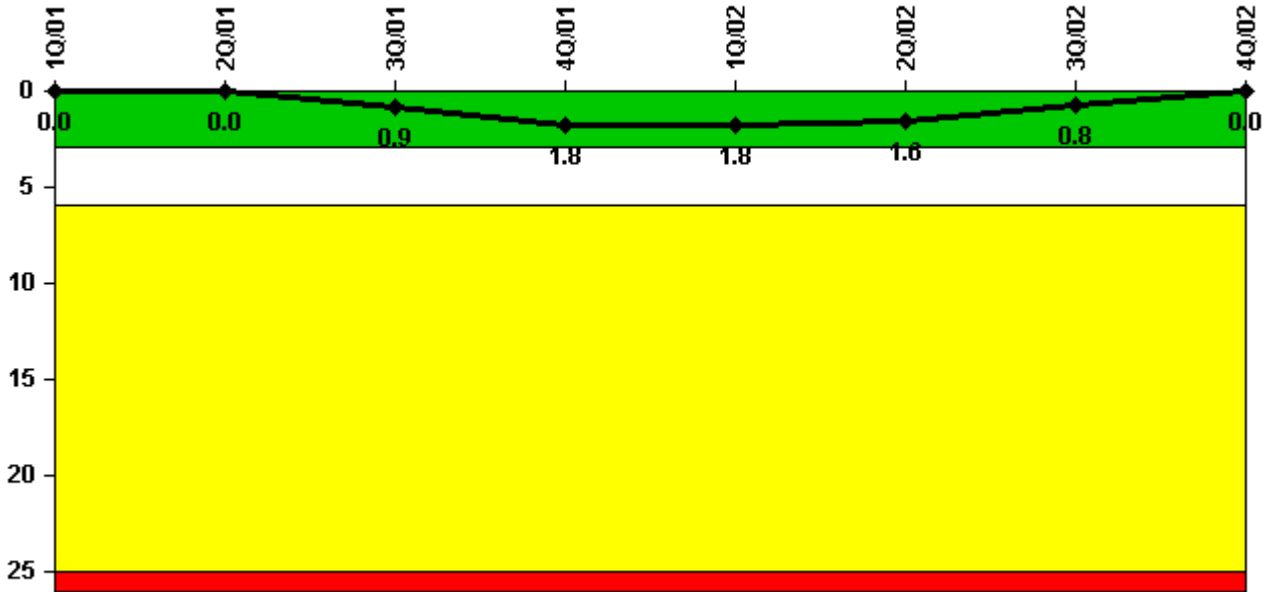


Pilgrim 1

4Q/2002 Performance Indicators

Licensee's General Comments: Pilgrim Station performance indicator data for 4Q-2002

Unplanned Scrams per 7000 Critical Hrs



Thresholds: White > 3.0 Yellow > 6.0 Red > 25.0

Notes

Unplanned Scrams per 7000 Critical Hrs	1Q/01	2Q/01	3Q/01	4Q/01	1Q/02	2Q/02	3Q/02	4Q/02
Unplanned scrams	0	0	1.0	1.0	0	0	0	0
Critical hours	2160.0	1556.7	2115.4	2140.1	2160.0	2183.0	2208.0	2209.0
Indicator value	0	0	0.9	1.8	1.8	1.6	0.8	0

Licensee Comments: none

Scrams with Loss of Normal Heat Removal



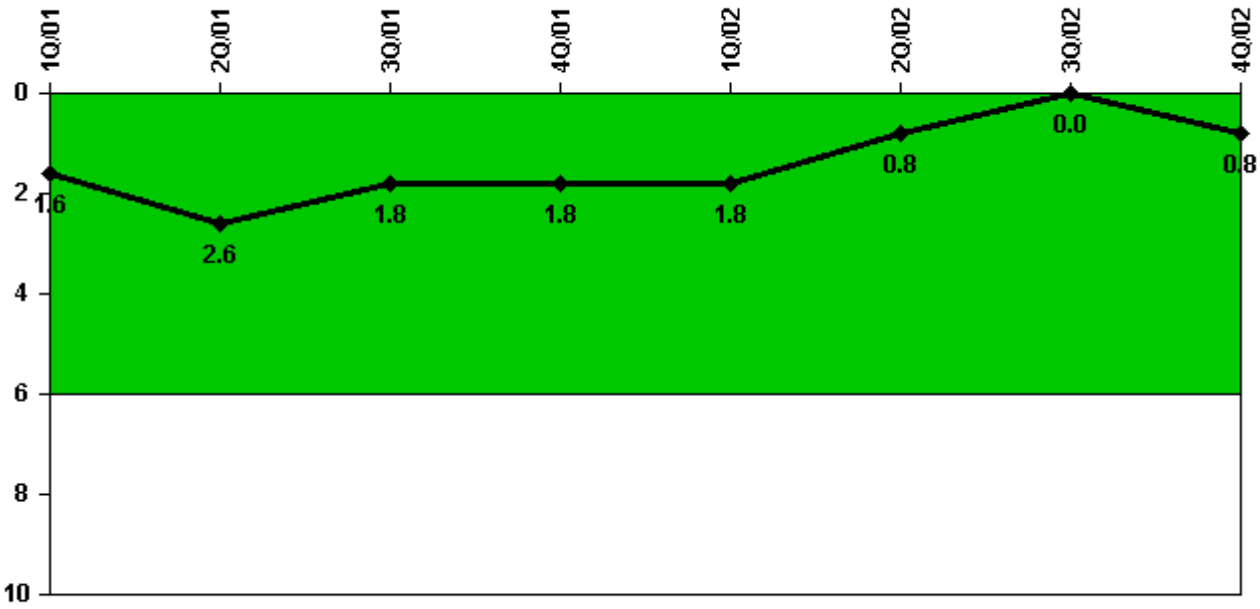
Thresholds: White > 2.0 Yellow > 10.0 Red > 20.0

Notes

Scrams with Loss of Normal Heat Removal	1Q/01	2Q/01	3Q/01	4Q/01	1Q/02	2Q/02	3Q/02	4Q/02
Scrams	0	0	0	0	0	0	0	0
Indicator value	0	0	0	0	0	0	0	0

Licensee Comments: none

Unplanned Power Changes per 7000 Critical Hrs



Thresholds: White > 6.0

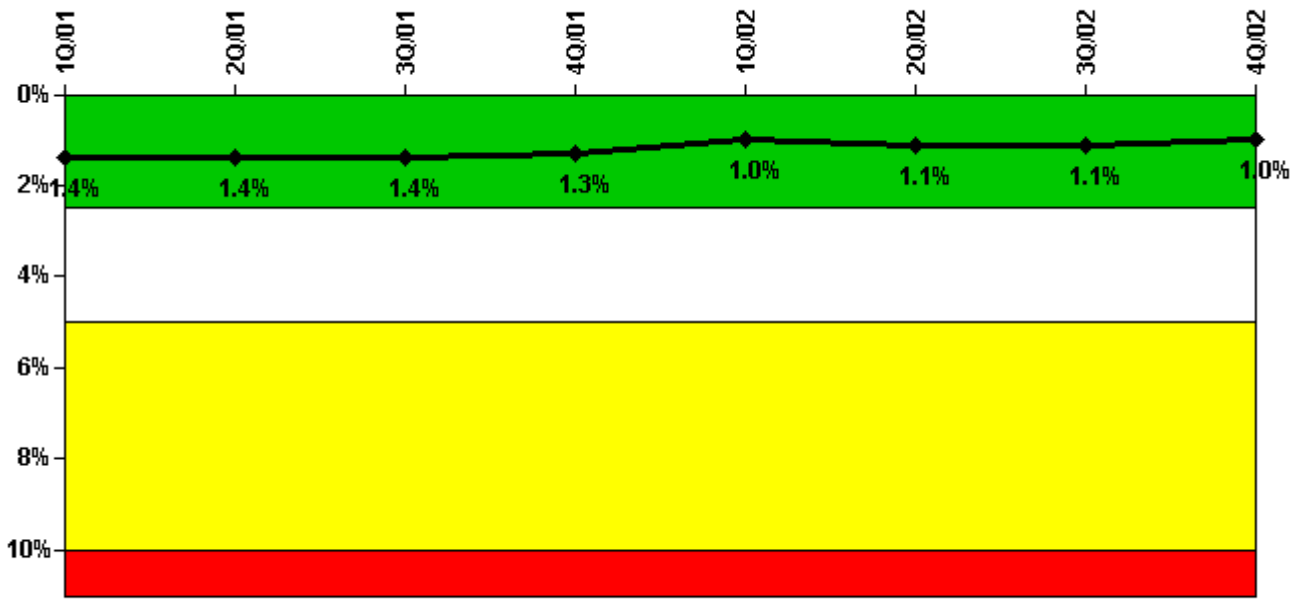
Notes

Unplanned Power Changes per 7000 Critical Hrs	1Q/01	2Q/01	3Q/01	4Q/01	1Q/02	2Q/02	3Q/02	4Q/02
Unplanned power changes	0	1.0	1.0	0	0	0	0	1.0
Critical hours	2160.0	1556.7	2115.4	2140.1	2160.0	2183.0	2208.0	2209.0
Indicator value	1.6	2.6	1.8	1.8	1.8	0.8	0	0.8

Licensee Comments:

4Q/02: Reflects power reduction on 10/17/02.

Safety System Unavailability, Emergency AC Power



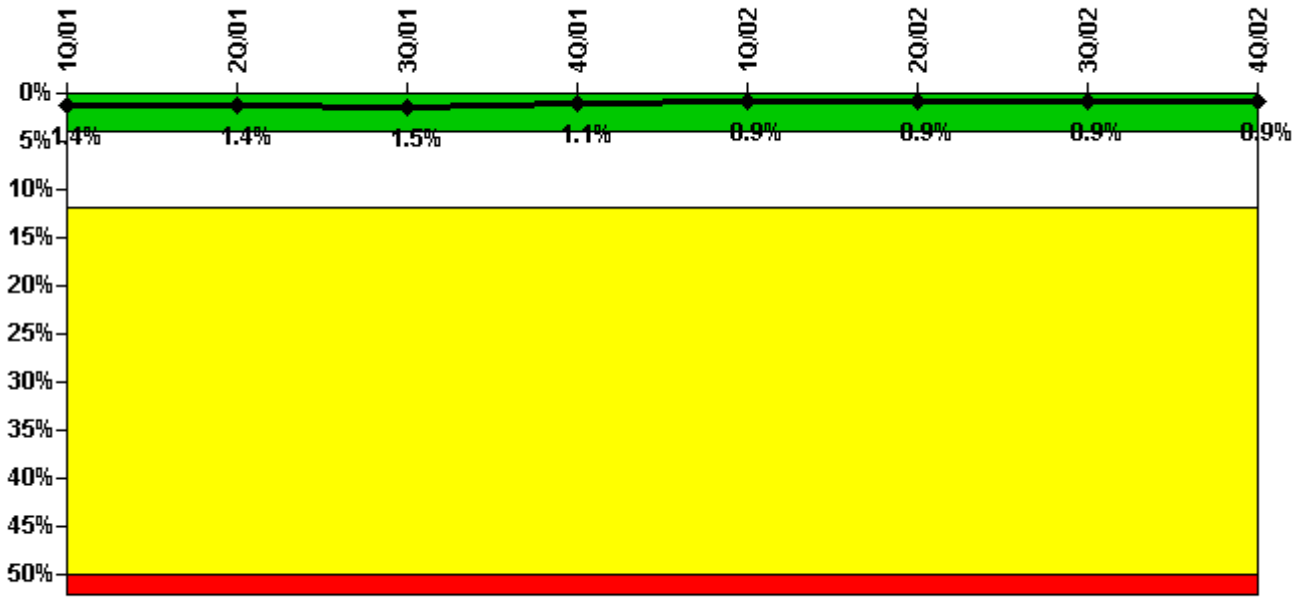
Thresholds: White > 2.5% Yellow > 5.0% Red > 10.0%

Notes

Safety System Unavailability, Emergency AC Power	1Q/01	2Q/01	3Q/01	4Q/01	1Q/02	2Q/02	3Q/02	4Q/02
Train 1								
Planned unavailable hours	0.25	0.29	11.05	0.99	1.20	3.55	144.05	1.53
Unplanned unavailable hours	0	0	4.87	0	0	4.00	4.70	0
Fault exposure hours	0	0	0	0	0	0	0	0
Effective Reset hours	0	0	0	0	0	0	0	0
Required hours	2160.00	1573.25	2181.70	2154.80	2160.00	2183.00	2208.00	2209.00
Train 2								
Planned unavailable hours	0.35	1.13	0.68	5.70	0.90	117.66	0.70	0.89
Unplanned unavailable hours	0	0	0	0	0	33.75	3.05	0
Fault exposure hours	0	0	0	0	0	0	0	0
Effective Reset hours	0	0	0	0	0	0	0	0
Required hours	2160.00	1573.25	2181.70	2154.80	2160.00	2183.00	2208.00	2209.00
Indicator value	1.4%	1.4%	1.4%	1.3%	1.0%	1.1%	1.1%	1.0%

Licensee Comments: none

Safety System Unavailability, High Pressure Injection System (HPCI)



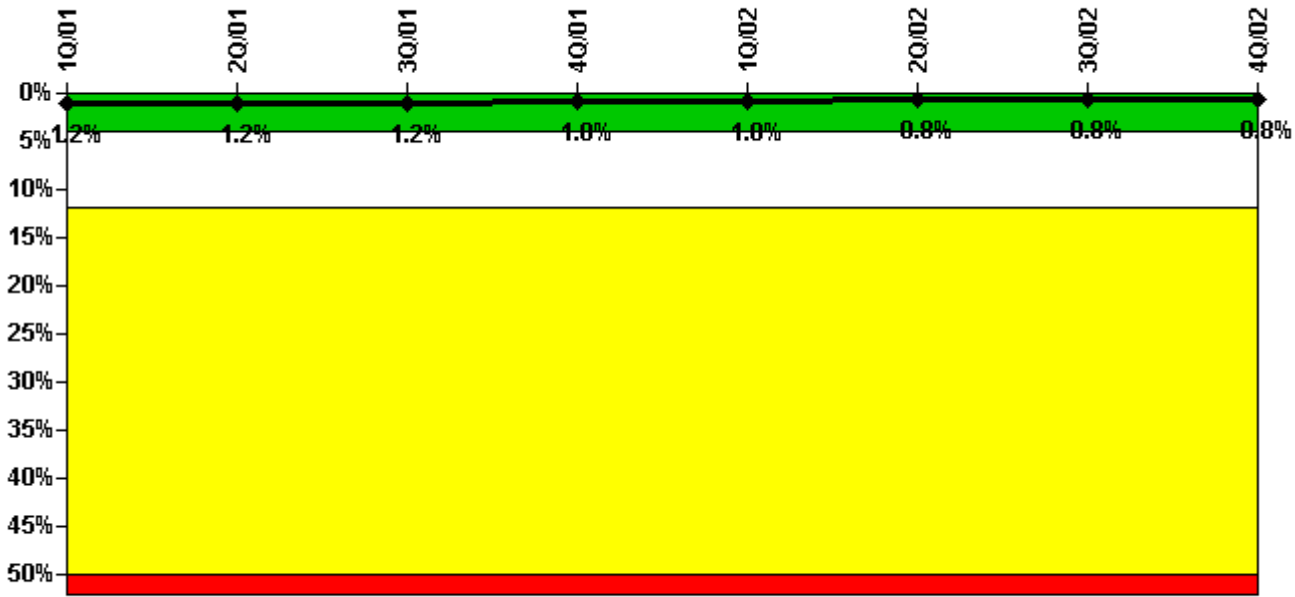
Thresholds: White > 4.0% Yellow > 12.0% Red > 50.0%

Notes

Safety System Unavailability, High Pressure Injection System (HPCI)	1Q/01	2Q/01	3Q/01	4Q/01	1Q/02	2Q/02	3Q/02	4Q/02
Train 1								
Planned unavailable hours	7.00	4.06	24.21	7.74	15.31	12.90	18.62	3.62
Unplanned unavailable hours	6.00	0	0	0	0	0	0.50	0
Fault exposure hours	0	0	0	0	0	0	0	0
Effective Reset hours	0	0	0	0	0	0	0	0
Required hours	2160.00	1525.00	2121.00	2148.00	2160.00	2183.00	2208.00	2209.00
Indicator value	1.4%	1.4%	1.5%	1.1%	0.9%	0.9%	0.9%	0.9%

Licensee Comments: none

Safety System Unavailability, Heat Removal System (RCIC)



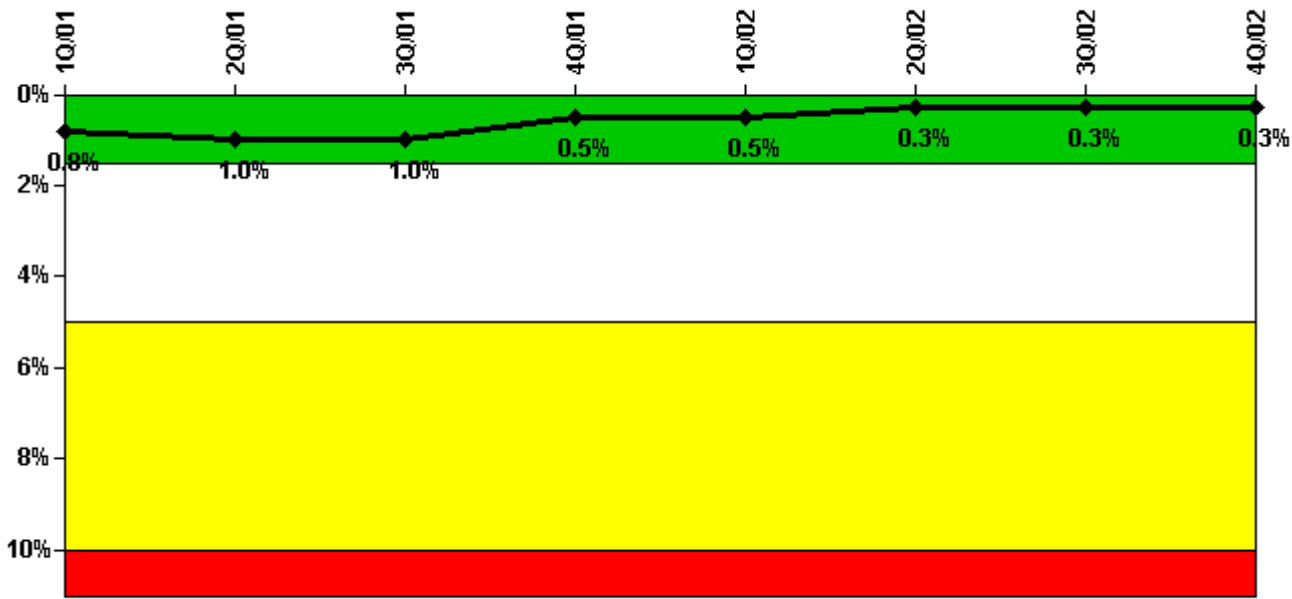
Thresholds: White > 4.0% Yellow > 12.0% Red > 50.0%

Notes

Safety System Unavailability, Heat Removal System (RCIC)	1Q/01	2Q/01	3Q/01	4Q/01	1Q/02	2Q/02	3Q/02	4Q/02
Train 1								
Planned unavailable hours	15.00	3.80	13.72	10.75	11.86	7.64	14.28	22.73
Unplanned unavailable hours	1.00	1.40	0.73	0	0	0	0	0
Fault exposure hours	0	0	0	0	0	0	0	0
Effective Reset hours	0	0	0	0	0	0	0	0
Required hours	2160.00	1525.00	2121.00	2148.00	2160.00	2183.00	2208.00	2209.00
Indicator value	1.2%	1.2%	1.2%	1.0%	1.0%	0.8%	0.8%	0.8%

Licensee Comments: none

Safety System Unavailability, Residual Heat Removal System



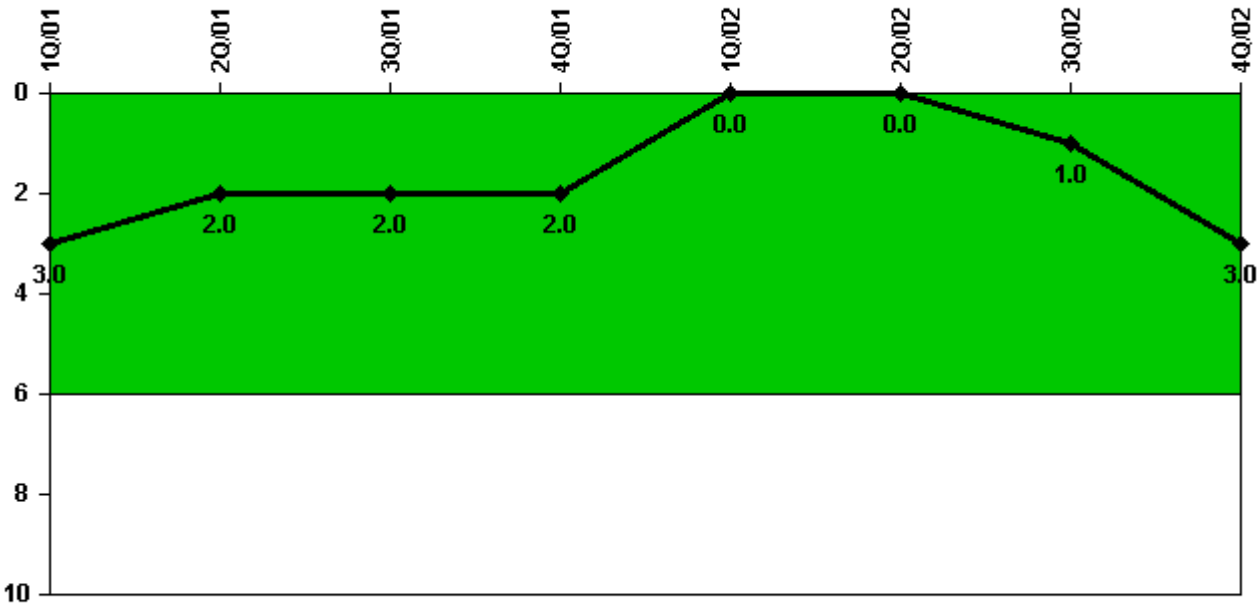
Thresholds: White > 1.5% Yellow > 5.0% Red > 10.0%

Notes

Safety System Unavailability, Residual Heat Removal System	1Q/01	2Q/01	3Q/01	4Q/01	1Q/02	2Q/02	3Q/02	4Q/02
Train 1								
Planned unavailable hours	18.95	0	0	0.25	0	2.48	0	3.00
Unplanned unavailable hours	1.68	0.30	0	0	0	0	0	0
Fault exposure hours	0	0	0	0	0	0	0	0
Effective Reset hours	0	0	0	0	0	0	0	0
Required hours	2160.00	2183.00	2208.00	2209.00	2160.00	2183.00	2208.00	2209.00
Train 2								
Planned unavailable hours	0	108.85	0	0	0	0	0.50	0
Unplanned unavailable hours	0	0	0	0	0	0	0	0
Fault exposure hours	0	0	0	0	0	0	0	0
Effective Reset hours	0	0	0	0	0	0	0	0
Required hours	2160.00	2183.00	2208.00	2209.00	2160.00	2183.00	2208.00	2209.00
Indicator value	0.8%	1.0%	1.0%	0.5%	0.5%	0.3%	0.3%	0.3%

Licensee Comments: none

Safety System Functional Failures (BWR)



Thresholds: White > 6.0

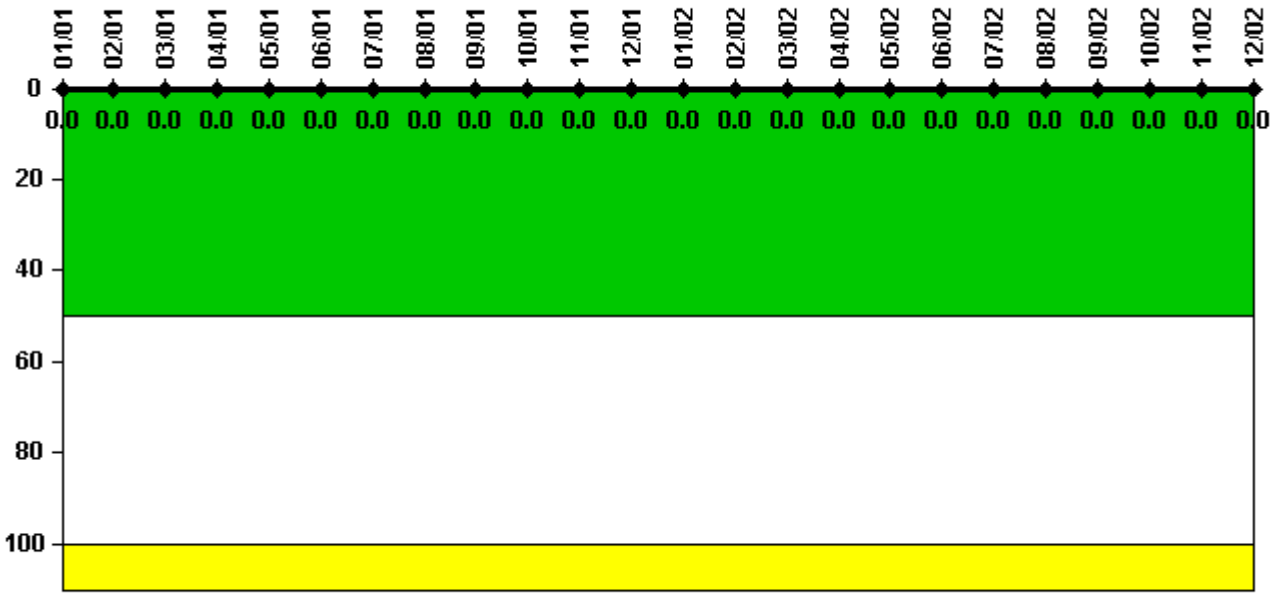
Notes

Safety System Functional Failures (BWR)	1Q/01	2Q/01	3Q/01	4Q/01	1Q/02	2Q/02	3Q/02	4Q/02
Safety System Functional Failures	2	0	0	0	0	0	1	2
Indicator value	3	2	2	2	0	0	1	3

Licensee Comments:

4Q/02: Reflects LER 2002-001-00 (HPCI) that was submitted on 9/4/02, LER 2002-002-00 (CRHEAF) that was submitted on 11/12/02, and LER 2002-003-00 (RPS) that was submitted on 12/2/02.

Reactor Coolant System Activity



Thresholds: White > 50.0 Yellow > 100.0

Notes

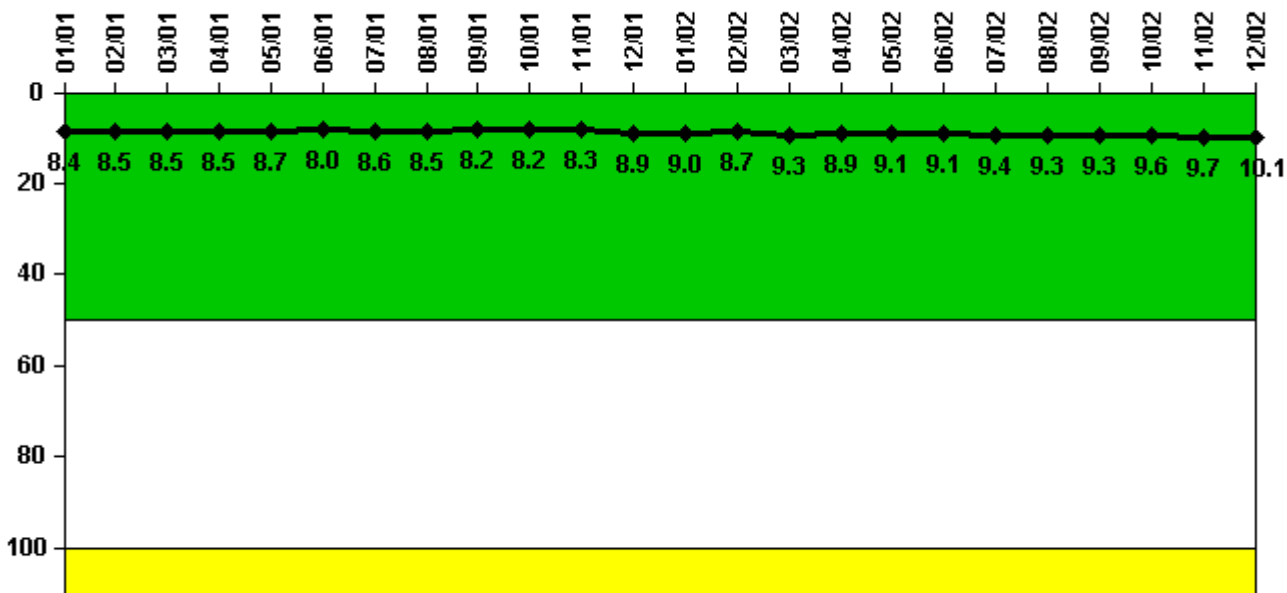
Reactor Coolant System Activity	1/01	2/01	3/01	4/01	5/01	6/01	7/01	8/01	9/01	10/01	11/01	12/01
Maximum activity	0.006560	0.002670	0.003420	0.003490	0.002800	0.003140	0.002850	0.003030	0.002270	0.003310	0.002450	0.002260
Technical specification limit	20.0	20.0	20.0	20.0	20.0	20.0	20.0	20.0	20.0	20.0	20.0	20.0
Indicator value	0	0	0	0	0	0	0	0	0	0	0	0

Reactor Coolant System Activity	1/02	2/02	3/02	4/02	5/02	6/02	7/02	8/02	9/02	10/02	11/02	12/02
Maximum activity	0.002860	0.003050	0.003100	0.002360	0.002250	0.002360	0.002360	0.002930	0.002850	0.001780	0.002160	0.002900
Technical specification limit	20.0	20.0	20.0	20.0	20.0	20.0	20.0	20.0	20.0	20.0	20.0	20.0
Indicator value	0	0	0	0	0	0	0	0	0	0	0	0

Licensee Comments:

12/02: Maximum calculated RCS activity in micro-Curies per gram total Iodine, expressed as a percentage of the Technical Specification limit. Technical Specifications specify total Iodine, does not specify dose equivalent Iodine-131.

Reactor Coolant System Leakage



Thresholds: White > 50.0 Yellow > 100.0

Notes

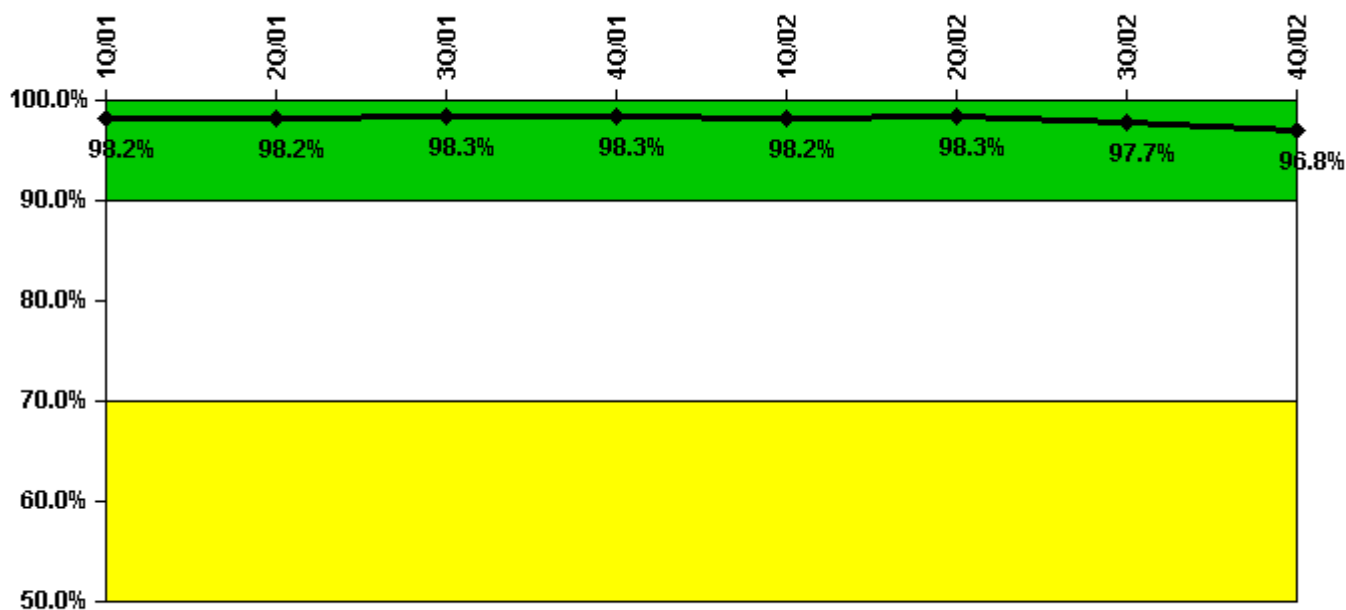
Reactor Coolant System Leakage	1/01	2/01	3/01	4/01	5/01	6/01	7/01	8/01	9/01	10/01	11/01	12/01
Maximum leakage	2.100	2.130	2.130	2.120	2.180	2.000	2.140	2.130	2.060	2.060	2.080	2.230
Technical specification limit	25.0	25.0	25.0	25.0	25.0	25.0	25.0	25.0	25.0	25.0	25.0	25.0
Indicator value	8.4	8.5	8.5	8.5	8.7	8.0	8.6	8.5	8.2	8.2	8.3	8.9

Reactor Coolant System Leakage	1/02	2/02	3/02	4/02	5/02	6/02	7/02	8/02	9/02	10/02	11/02	12/02
Maximum leakage	2.250	2.180	2.330	2.230	2.270	2.280	2.360	2.330	2.330	2.400	2.420	2.530
Technical specification limit	25.0	25.0	25.0	25.0	25.0	25.0	25.0	25.0	25.0	25.0	25.0	25.0
Indicator value	9.0	8.7	9.3	8.9	9.1	9.1	9.4	9.3	9.3	9.6	9.7	10.1

Licensee Comments:

12/02: Maximum total leakage (un-identified plus identified) in gpm for each month, expressed as a percentage of the Technical Specification limit. Technical Specifications specify un-identified and total leakage, does not specify identified leakage.

Drill/Exercise Performance



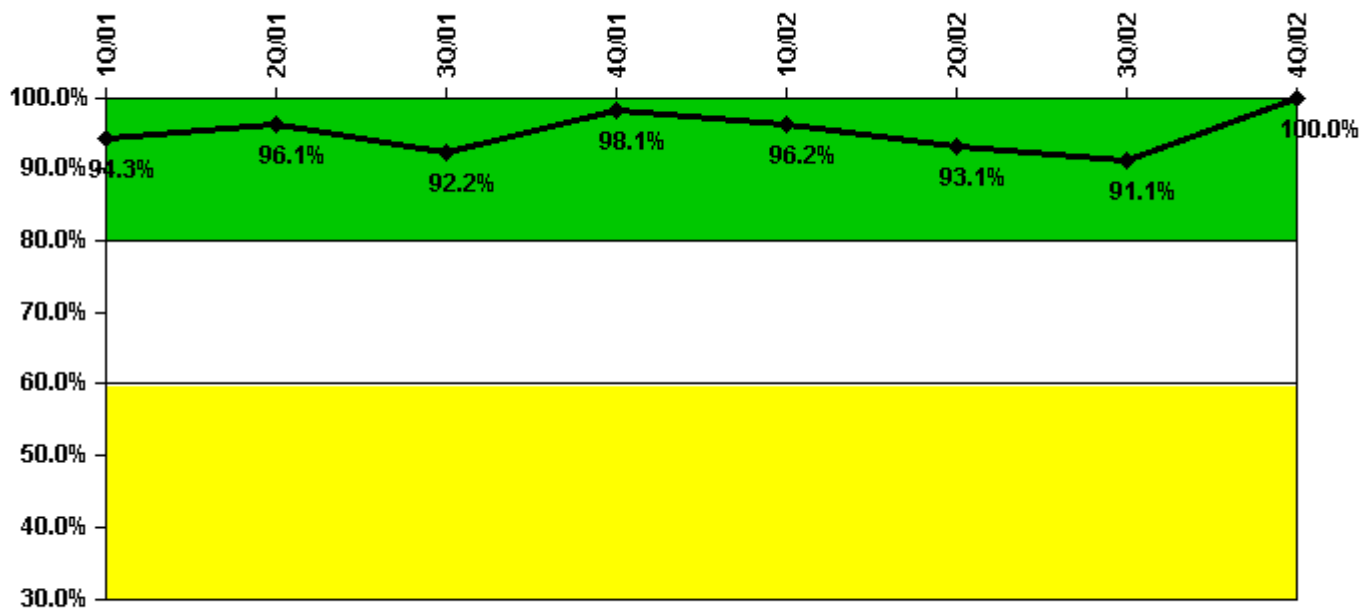
Thresholds: White < 90.0% Yellow < 70.0%

Notes

Drill/Exercise Performance	1Q/01	2Q/01	3Q/01	4Q/01	1Q/02	2Q/02	3Q/02	4Q/02
Successful opportunities	6.0	2.0	28.0	59.0	14.0	26.0	54.0	22.0
Total opportunities	6.0	2.0	28.0	61.0	15.0	26.0	56.0	24.0
Indicator value	98.2%	98.2%	98.3%	98.3%	98.2%	98.3%	97.7%	96.8%

Licensee Comments: none

ERO Drill Participation



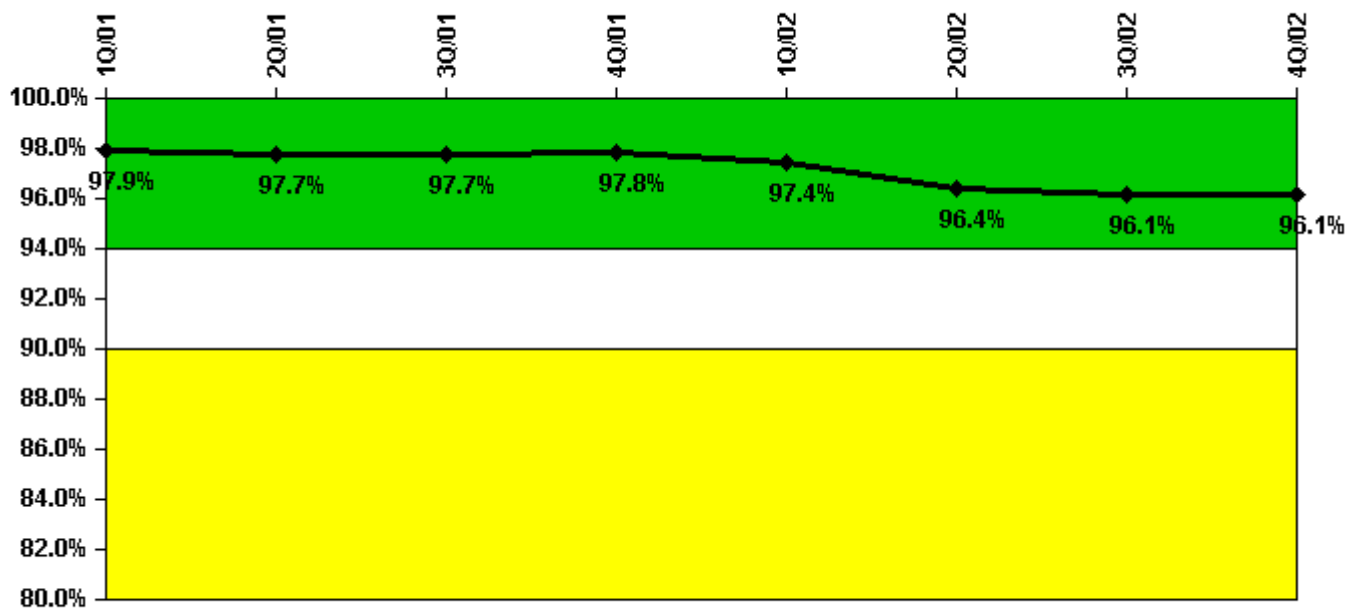
Thresholds: White < 80.0% Yellow < 60.0%

Notes

ERO Drill Participation	1Q/01	2Q/01	3Q/01	4Q/01	1Q/02	2Q/02	3Q/02	4Q/02
Participating Key personnel	50.0	49.0	47.0	52.0	50.0	54.0	51.0	58.0
Total Key personnel	53.0	51.0	51.0	53.0	52.0	58.0	56.0	58.0
Indicator value	94.3%	96.1%	92.2%	98.1%	96.2%	93.1%	91.1%	100.0%

Licensee Comments: none

Alert & Notification System



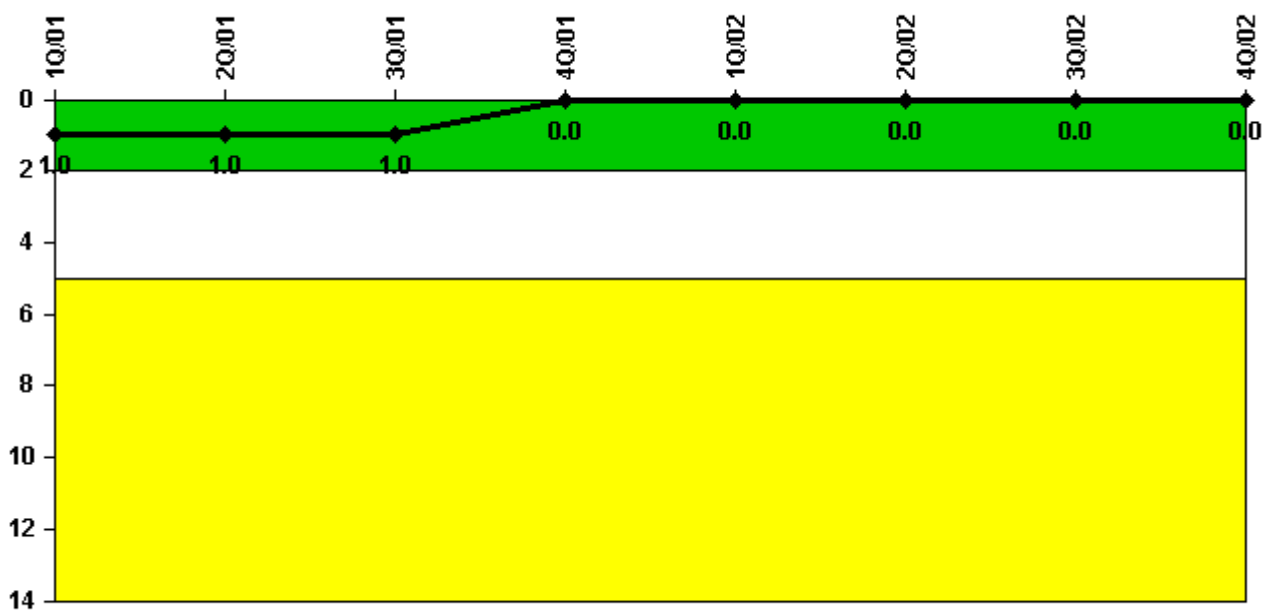
Thresholds: White < 94.0% Yellow < 90.0%

Notes

Alert & Notification System	1Q/01	2Q/01	3Q/01	4Q/01	1Q/02	2Q/02	3Q/02	4Q/02
Successful siren-tests	330	328	328	438	324	313	432	330
Total sirens-tests	336	336	336	448	336	336	448	336
Indicator value	97.9%	97.7%	97.7%	97.8%	97.4%	96.4%	96.1%	96.1%

Licensee Comments: none

Occupational Exposure Control Effectiveness



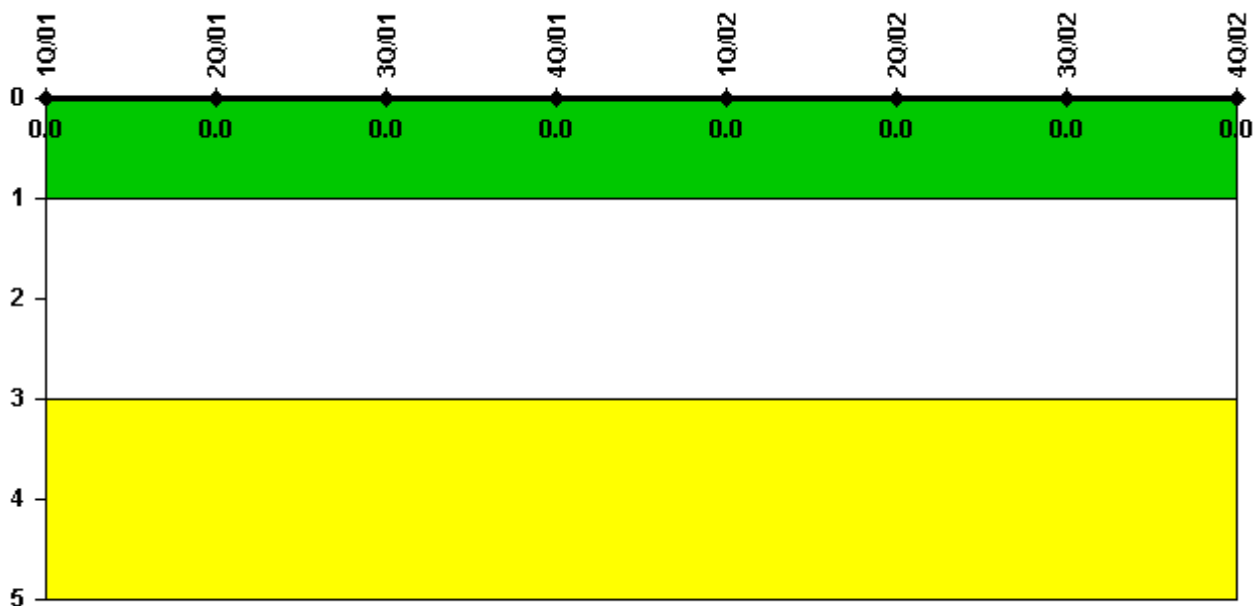
Thresholds: White > 2.0 Yellow > 5.0

Notes

Occupational Exposure Control Effectiveness	1Q/01	2Q/01	3Q/01	4Q/01	1Q/02	2Q/02	3Q/02	4Q/02
High radiation area occurrences	0	0	0	0	0	0	0	0
Very high radiation area occurrences	0	0	0	0	0	0	0	0
Unintended exposure occurrences	0	0	0	0	0	0	0	0
Indicator value	1	1	1	0	0	0	0	0

Licensee Comments: none

RETS/ODCM Radiological Effluent



Thresholds: White > 1.0 Yellow > 3.0

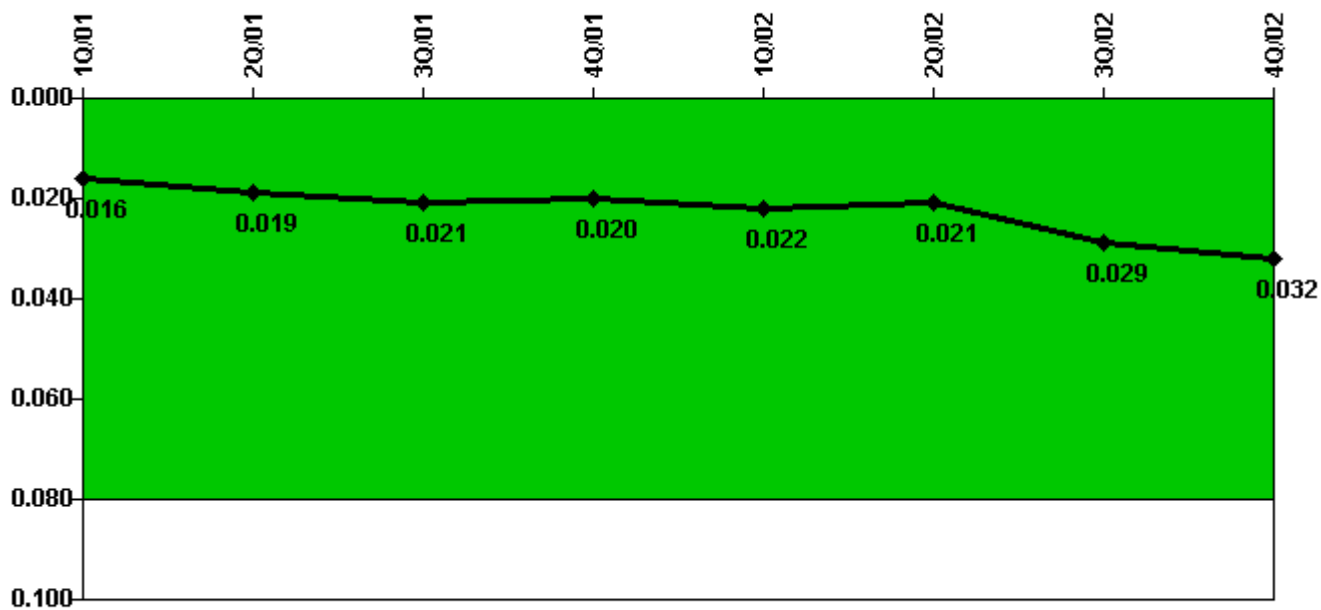
Notes

RETS/ODCM Radiological Effluent	1Q/01	2Q/01	3Q/01	4Q/01	1Q/02	2Q/02	3Q/02	4Q/02
RETS/ODCM occurrences	0	0	0	0	0	0	0	0
Indicator value	0	0	0	0	0	0	0	0

Licensee Comments:

4Q/02: Analysis results of effluents for December 2002 were not available when this data was submitted because the results of laboratory analysis of samples for December 2002 will not be available until February 2003. Weekly calculations completed through December 31, 2002 indicate cumulative doses for 4Q-2002 were well below the specified values. The sample analysis results for 4Q-2002 will be reflected in the April 2003 data submittal (for 1Q-2003). The sample analysis results for 3Q-2002 were as reported in the October 2002 data submittal (for 3Q-2002).

Protected Area Security Performance Index



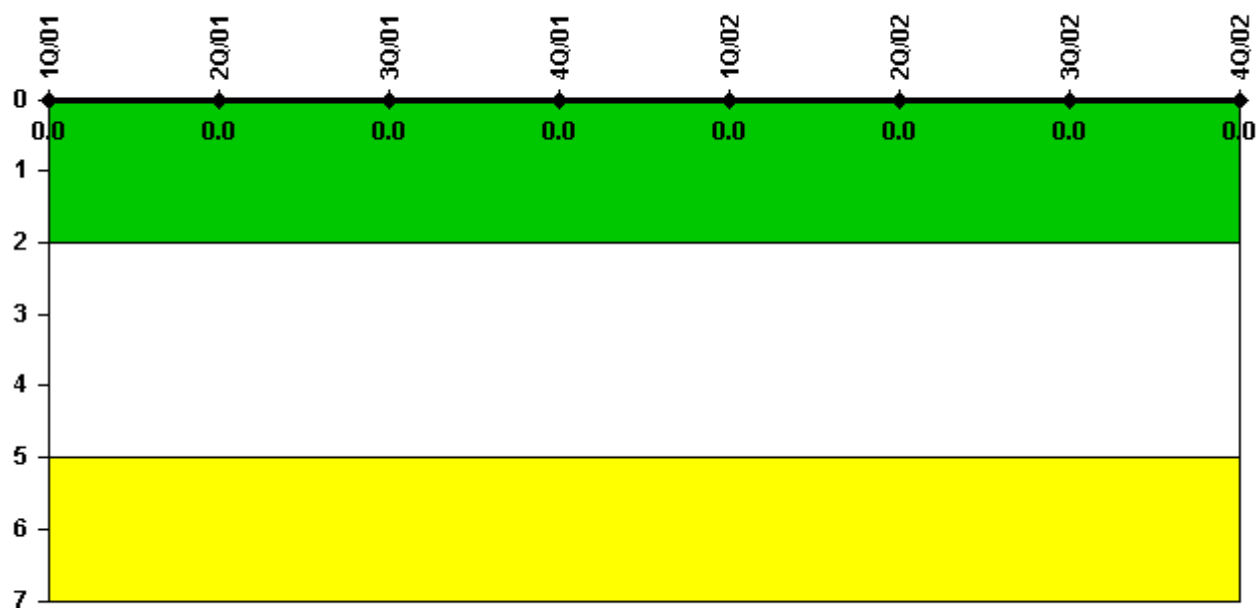
Thresholds: White > 0.080

Notes

Protected Area Security Performance Index	1Q/01	2Q/01	3Q/01	4Q/01	1Q/02	2Q/02	3Q/02	4Q/02
IDS compensatory hours	137.10	151.10	73.20	36.60	173.60	137.20	82.40	42.20
CCTV compensatory hours	12.4	36.6	118.5	0	26.9	31.8	250.3	45.9
IDS normalization factor	2.15	2.15	2.15	2.15	2.15	2.15	2.15	2.15
CCTV normalization factor	1.0	1.0	1.0	1.0	1.0	1.0	1.0	1.0
Index Value	0.016	0.019	0.021	0.020	0.022	0.021	0.029	0.032

Licensee Comments: none

Personnel Screening Program



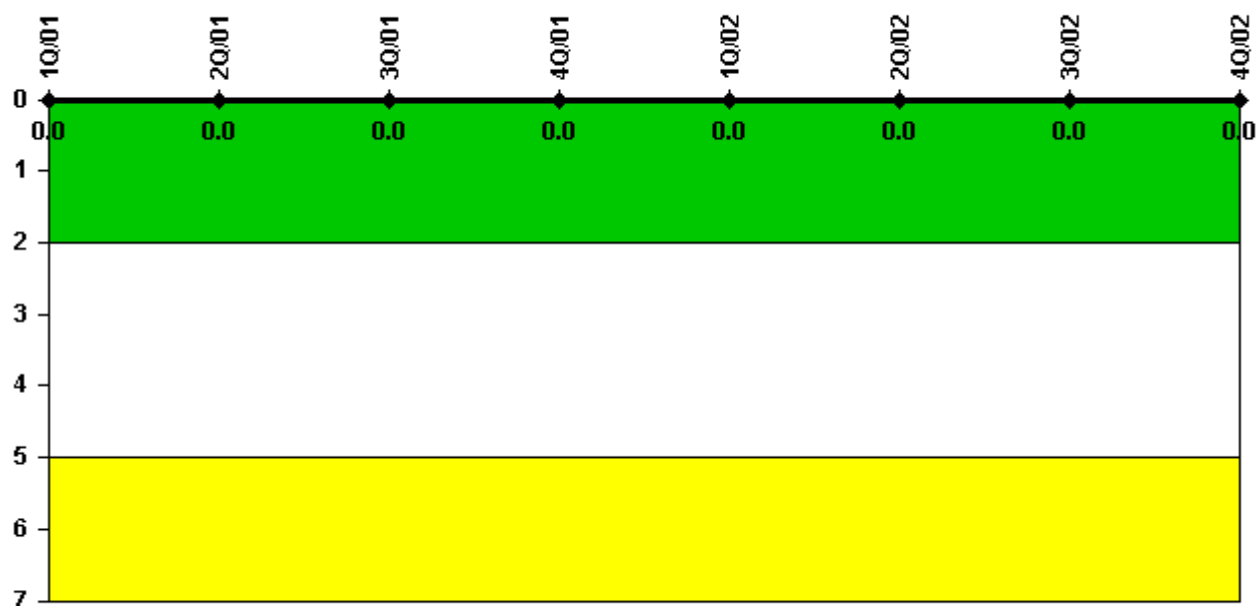
Thresholds: White > 2.0 Yellow > 5.0

Notes

Personnel Screening Program	1Q/01	2Q/01	3Q/01	4Q/01	1Q/02	2Q/02	3Q/02	4Q/02
Program failures	0	0	0	0	0	0	0	0
Indicator value	0	0	0	0	0	0	0	0

Licensee Comments: none

FFD/Personnel Reliability



Thresholds: White > 2.0 Yellow > 5.0

Notes

FFD/Personnel Reliability	1Q/01	2Q/01	3Q/01	4Q/01	1Q/02	2Q/02	3Q/02	4Q/02
Program Failures	0	0	0	0	0	0	0	0
Indicator value	0	0	0	0	0	0	0	0

Licensee Comments: none

▲ [PI Summary](#) | [Inspection Findings Summary](#) | [Reactor Oversight Process](#)

Last Modified: January 30, 2003