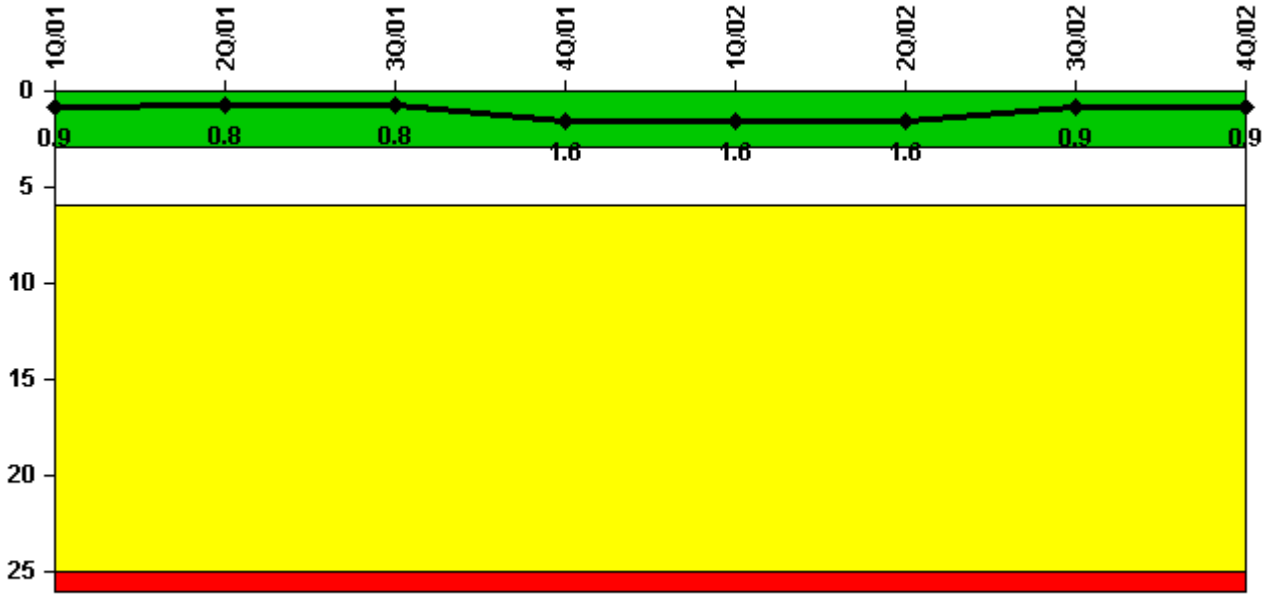


Peach Bottom 2

4Q/2002 Performance Indicators

Licensee's General Comments: none

Unplanned Scrams per 7000 Critical Hrs



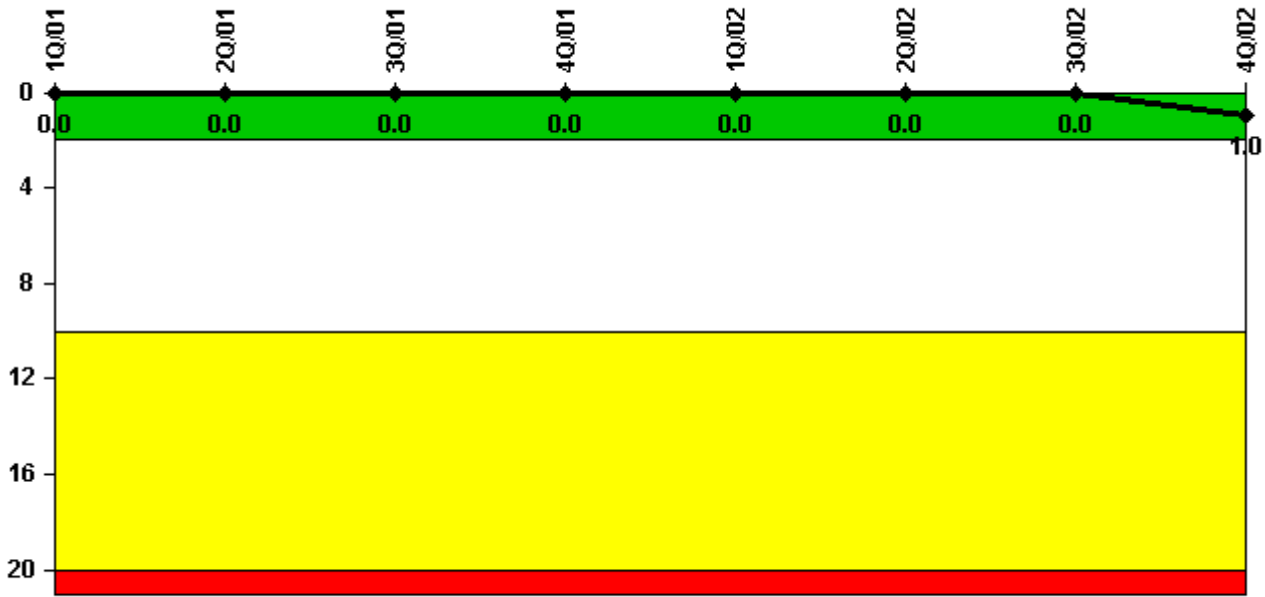
Thresholds: White > 3.0 Yellow > 6.0 Red > 25.0

Notes

Unplanned Scrams per 7000 Critical Hrs	1Q/01	2Q/01	3Q/01	4Q/01	1Q/02	2Q/02	3Q/02	4Q/02
Unplanned scrams	0	0	1.0	1.0	0	0	0	1.0
Critical hours	2160.0	2183.0	2161.1	2100.9	2160.0	2183.0	1719.1	2119.9
Indicator value	0.9	0.8	0.8	1.6	1.6	1.6	0.9	0.9

Licensee Comments: none

Scrams with Loss of Normal Heat Removal



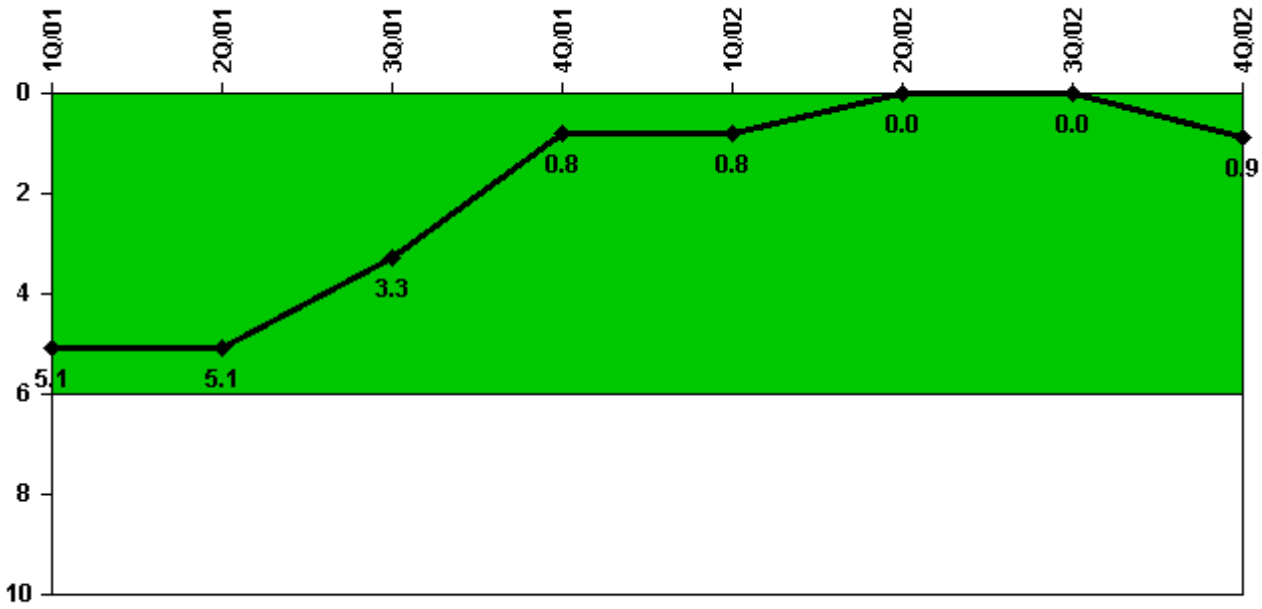
Thresholds: White > 2.0 Yellow > 10.0 Red > 20.0

Notes

Scrams with Loss of Normal Heat Removal	1Q/01	2Q/01	3Q/01	4Q/01	1Q/02	2Q/02	3Q/02	4Q/02
Scrams	0	0	0	0	0	0	0	1.0
Indicator value	0	0	0	0	0	0	0	1.0

Licensee Comments: none

Unplanned Power Changes per 7000 Critical Hrs



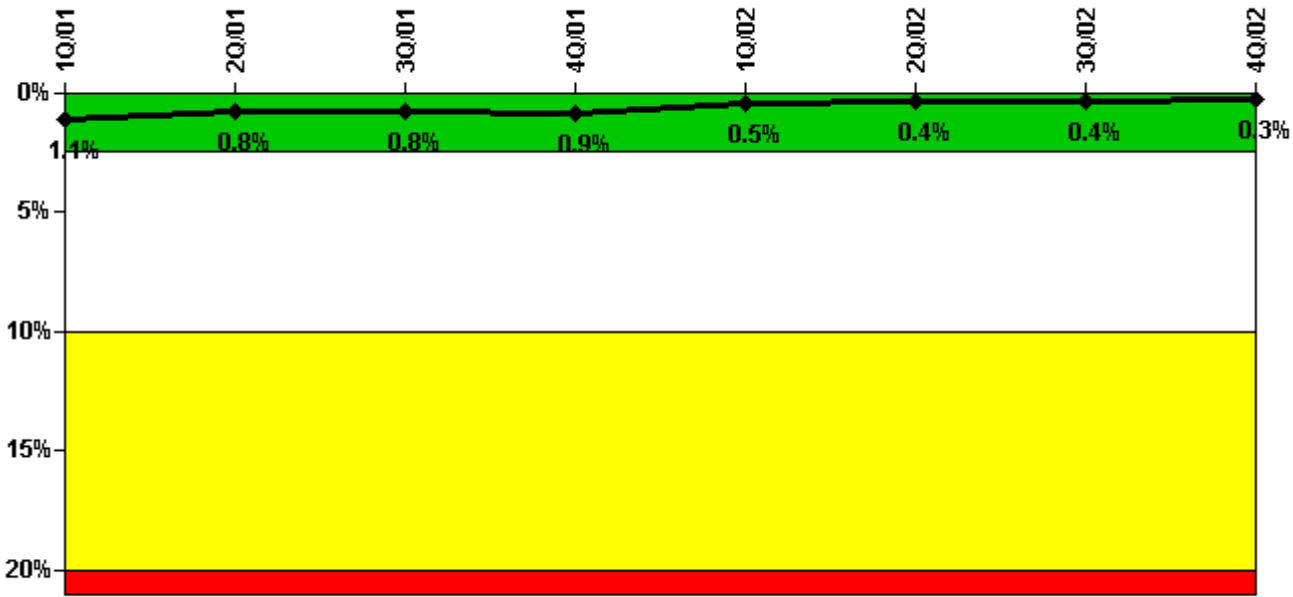
Thresholds: White > 6.0

Notes

Unplanned Power Changes per 7000 Critical Hrs	1Q/01	2Q/01	3Q/01	4Q/01	1Q/02	2Q/02	3Q/02	4Q/02
Unplanned power changes	0	1.0	0	0	0	0	0	1.0
Critical hours	2160.0	2183.0	2161.1	2100.9	2160.0	2183.0	1719.1	2119.9
Indicator value	5.1	5.1	3.3	0.8	0.8	0	0	0.9

Licensee Comments: none

Safety System Unavailability, Emergency AC Power, >2EDG



Thresholds: White > 2.5% Yellow > 10.0% Red > 20.0%

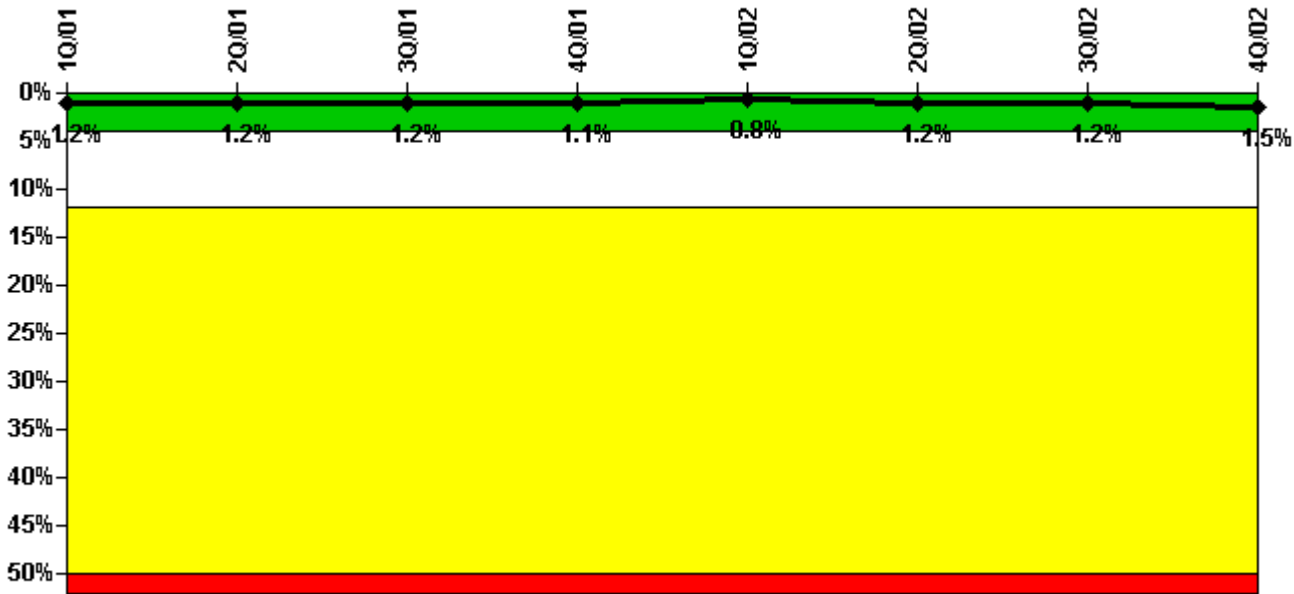
Notes

Safety System Unavailability, Emergency AC Power, >2EDG	1Q/01	2Q/01	3Q/01	4Q/01	1Q/02	2Q/02	3Q/02	4Q/02
Train 1								
Planned unavailable hours	0	12.75	0.10	0	0	0	1.00	0.50
Unplanned unavailable hours	0	0	0	0	0	0	0	0
Fault exposure hours	0	0	0	0	0	0	0	0
Effective Reset hours	0	0	0	0	0	0	0	0
Required hours	2160.00	2183.00	2201.75	2165.50	2160.00	2183.00	1967.00	2173.75
Train 2								
Planned unavailable hours	0	8.00	0.10	0	11.25	26.75	0	0
Unplanned unavailable hours	0	0	0	4.00	0	0	0	0
Fault exposure hours	0	0	0	129.00	0	0	0	0
Effective Reset hours	0	0	0	0	0	0	0	0
Required hours	2160.00	2183.00	2201.75	2165.50	2160.00	2183.00	1967.00	2173.75
Train 3								
Planned unavailable hours	0	0	0	0	0	0.50	0.50	0
Unplanned unavailable hours	0	0	6.50	0	0	20.00	0	1.50
Fault exposure hours	0	0	0	0	0	0	0	0
Effective Reset hours	0	0	0	0	0	0	0	0
Required hours	2160.00	2183.00	2201.75	2165.50	2160.00	2183.00	1967.00	2173.75
Train 4								
Planned unavailable hours	33.00	0	0.10	0	0	0	0	0
Unplanned unavailable hours	0	0	0	0	7.00	0	0	0
Fault exposure hours	0	0	0	0	0	0	0	0
Effective Reset hours	0	0	0	0	0	0	0	0
Required hours	2160.00	2183.00	2201.75	2165.50	2160.00	2183.00	1967.00	2173.75
Indicator value	1.1%	0.8%	0.8%	0.9%	0.5%	0.4%	0.4%	0.3%

Licensee Comments:

4Q/02: October hours for each train adusted by one (1) additional hour to account for daylight savings time.

Safety System Unavailability, High Pressure Injection System (HPCI)



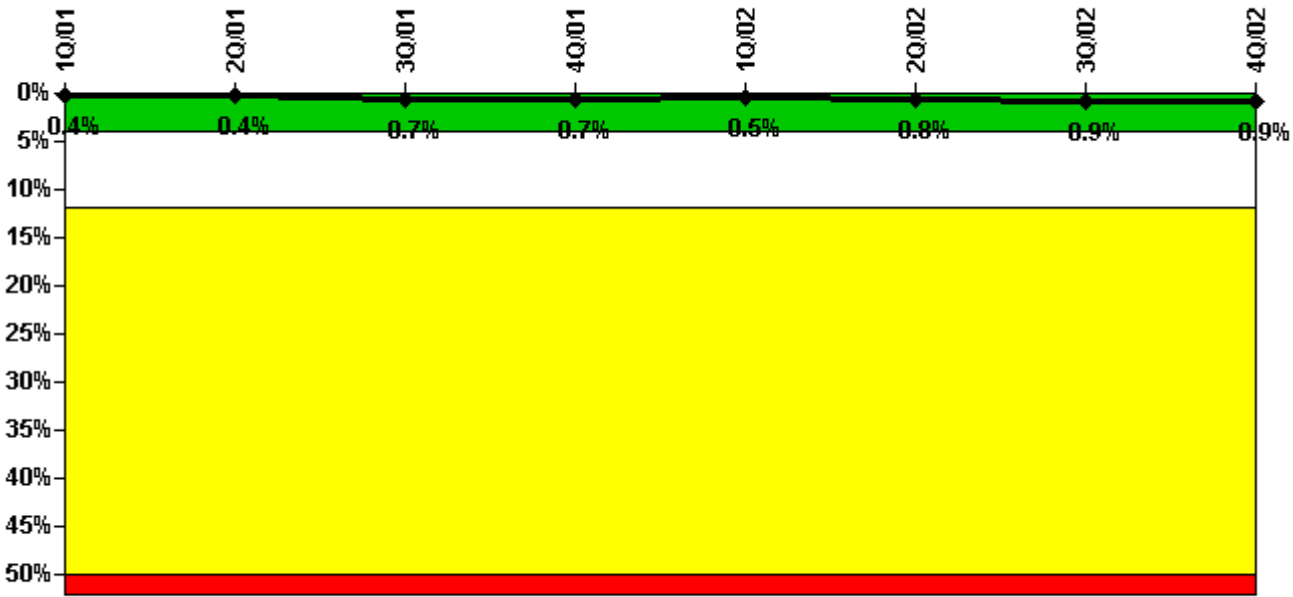
Thresholds: White > 4.0% Yellow > 12.0% Red > 50.0%

Notes

Safety System Unavailability, High Pressure Injection System (HPCI)	1Q/01	2Q/01	3Q/01	4Q/01	1Q/02	2Q/02	3Q/02	4Q/02
Train 1								
Planned unavailable hours	18.89	3.20	3.52	6.36	7.78	122.45	0	109.45
Unplanned unavailable hours	0	0	0	0	0	0	0	0
Fault exposure hours	0	0	0	0	0	0	0	0
Effective Reset hours	0	0	0	0	0	0	0	0
Required hours	2160.00	2183.00	2161.08	2100.93	2160.00	2183.00	1719.08	2119.85
Indicator value	1.2%	1.2%	1.2%	1.1%	0.8%	1.2%	1.2%	1.5%

Licensee Comments: none

Safety System Unavailability, Heat Removal System (RCIC)



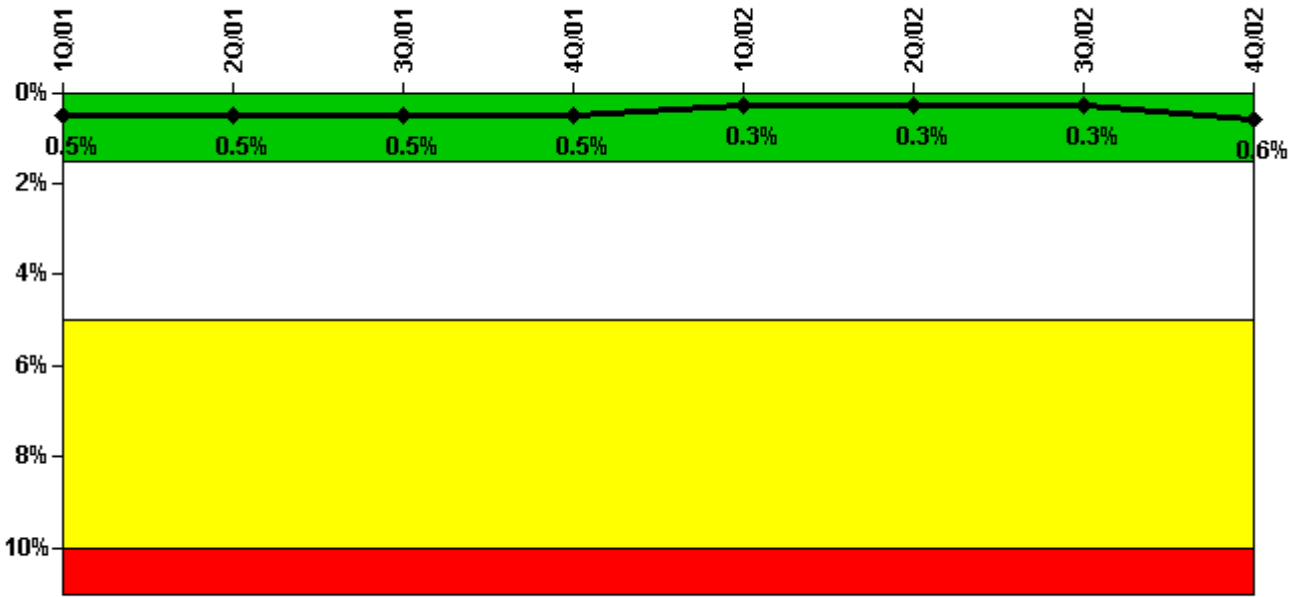
Thresholds: White > 4.0% Yellow > 12.0% Red > 50.0%

Notes

Safety System Unavailability, Heat Removal System (RCIC)	1Q/01	2Q/01	3Q/01	4Q/01	1Q/02	2Q/02	3Q/02	4Q/02
Train 1								
Planned unavailable hours	17.17	2.20	71.09	8.68	12.14	59.33	33.88	1.40
Unplanned unavailable hours	0	0	0	0	0	0	0	0
Fault exposure hours	0	0	0	0	0	0	0	0
Effective Reset hours	0	0	0	0	0	0	0	0
Required hours	2160.00	2183.00	2161.08	2100.93	2160.00	2183.00	1719.08	2119.85
Indicator value	0.4%	0.4%	0.7%	0.7%	0.5%	0.8%	0.9%	0.9%

Licensee Comments: none

Safety System Unavailability, Residual Heat Removal System



Thresholds: White > 1.5% Yellow > 5.0% Red > 10.0%

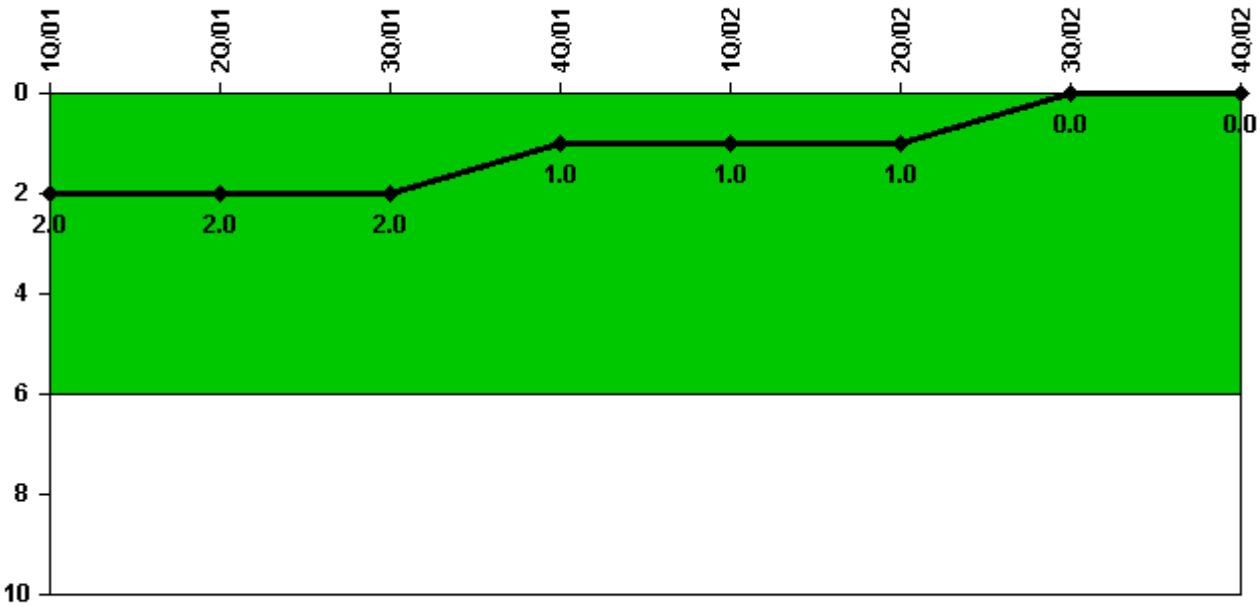
Notes

Safety System Unavailability, Residual Heat Removal System	1Q/01	2Q/01	3Q/01	4Q/01	1Q/02	2Q/02	3Q/02	4Q/02
Train 1								
Planned unavailable hours	24.00	0	0	12.35	20.73	1.40	0	80.18
Unplanned unavailable hours	0	0	0	0	0	0	0	0
Fault exposure hours	0	0	0	0	0	0	0	0
Effective Reset hours	0	0	0	0	0	0	0	0
Required hours	2160.00	2183.00	2208.00	2209.00	2160.00	2183.00	2208.00	2209.00
Train 2								
Planned unavailable hours	0	0	0	0	5.80	0.87	0	108.33
Unplanned unavailable hours	0	0	3.25	0	0	0	0	0
Fault exposure hours	0	0	0	0	0	0	0	0
Effective Reset hours	0	0	0	0	0	0	0	0
Required hours	2160.00	2183.00	2208.00	2121.67	2160.00	2183.00	1725.85	2142.02
Indicator value	0.5%	0.5%	0.5%	0.5%	0.3%	0.3%	0.3%	0.6%

Licensee Comments:

4Q/02: Train 2 required hours for service reflect 2R14 outage. Additional hour required for DST.

Safety System Functional Failures (BWR)



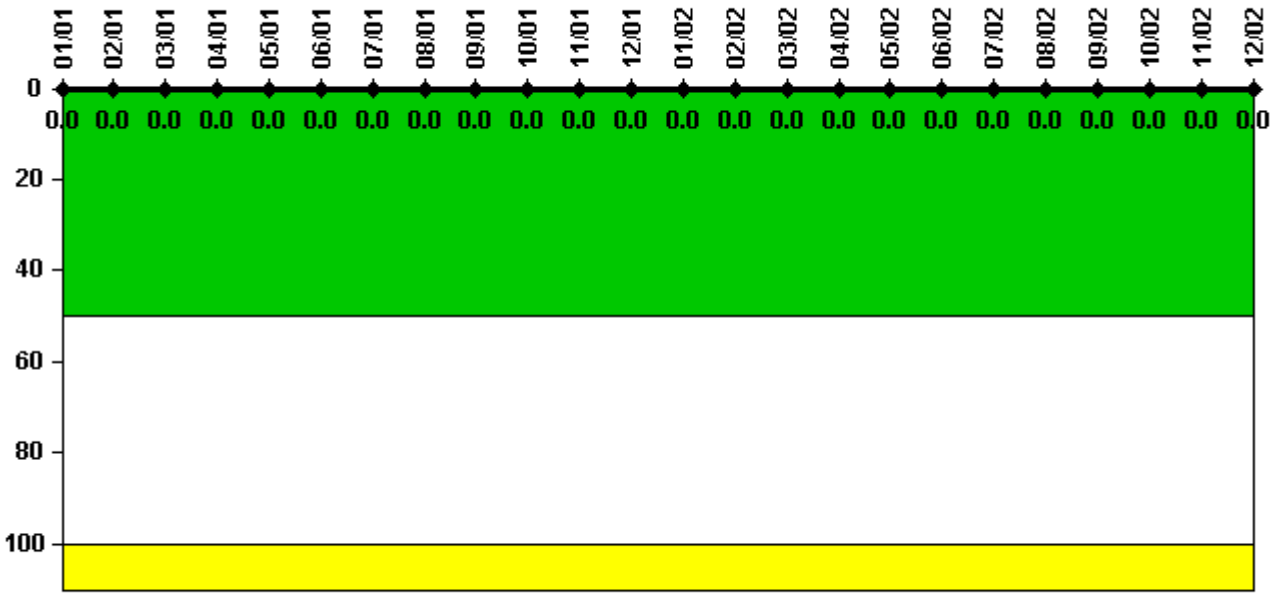
Thresholds: White > 6.0

Notes

Safety System Functional Failures (BWR)	1Q/01	2Q/01	3Q/01	4Q/01	1Q/02	2Q/02	3Q/02	4Q/02
Safety System Functional Failures	0	0	1	0	0	0	0	0
Indicator value	2	2	2	1	1	1	0	0

Licensee Comments: none

Reactor Coolant System Activity



Thresholds: White > 50.0 Yellow > 100.0

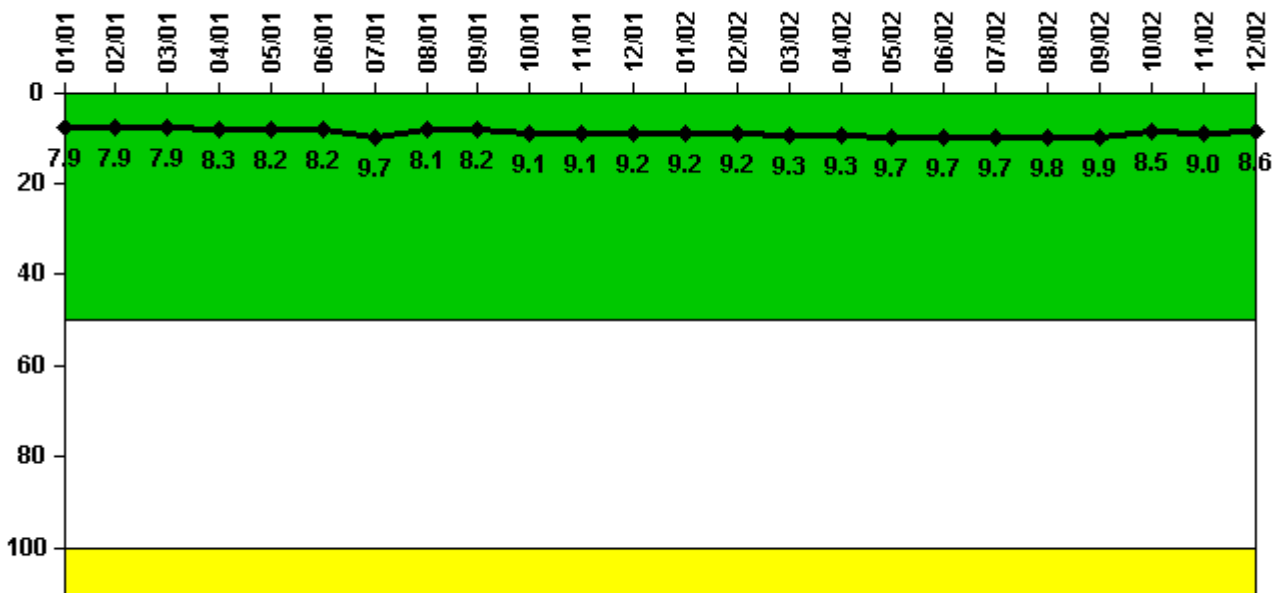
Notes

Reactor Coolant System Activity	1/01	2/01	3/01	4/01	5/01	6/01	7/01	8/01	9/01	10/01	11/01	12/01
Maximum activity	0.000004	0.000008	0.000007	0.000007	0.000003	0.000006	0.000011	0.000004	0.000003	0.000002	0.000004	0.000005
Technical specification limit	0.2	0.2	0.2	0.2	0.2	0.2	0.2	0.2	0.2	0.2	0.2	0.2
Indicator value	0	0	0	0	0	0	0	0	0	0	0	0

Reactor Coolant System Activity	1/02	2/02	3/02	4/02	5/02	6/02	7/02	8/02	9/02	10/02	11/02	12/02
Maximum activity	0.000013	0.000002	0.000002	0.000002	0.000002	0.000004	0.000005	0.000005	0.000001	0.000013	0.000005	0.000006
Technical specification limit	0.2	0.2	0.2	0.2	0.2	0.2	0.2	0.2	0.2	0.2	0.2	0.2
Indicator value	0	0	0	0	0	0	0	0	0	0	0	0

Licensee Comments: none

Reactor Coolant System Leakage



Thresholds: White > 50.0 Yellow > 100.0

Notes

Reactor Coolant System Leakage	1/01	2/01	3/01	4/01	5/01	6/01	7/01	8/01	9/01	10/01	11/01	12/01
Maximum leakage	1.970	1.970	1.970	2.080	2.040	2.040	2.420	2.020	2.060	2.270	2.270	2.290
Technical specification limit	25.0	25.0	25.0	25.0	25.0	25.0	25.0	25.0	25.0	25.0	25.0	25.0
Indicator value	7.9	7.9	7.9	8.3	8.2	8.2	9.7	8.1	8.2	9.1	9.1	9.2

Reactor Coolant System Leakage	1/02	2/02	3/02	4/02	5/02	6/02	7/02	8/02	9/02	10/02	11/02	12/02
Maximum leakage	2.290	2.290	2.320	2.330	2.420	2.420	2.420	2.440	2.470	2.130	2.250	2.140
Technical specification limit	25.0	25.0	25.0	25.0	25.0	25.0	25.0	25.0	25.0	25.0	25.0	25.0
Indicator value	9.2	9.2	9.3	9.3	9.7	9.7	9.7	9.8	9.9	8.5	9.0	8.6

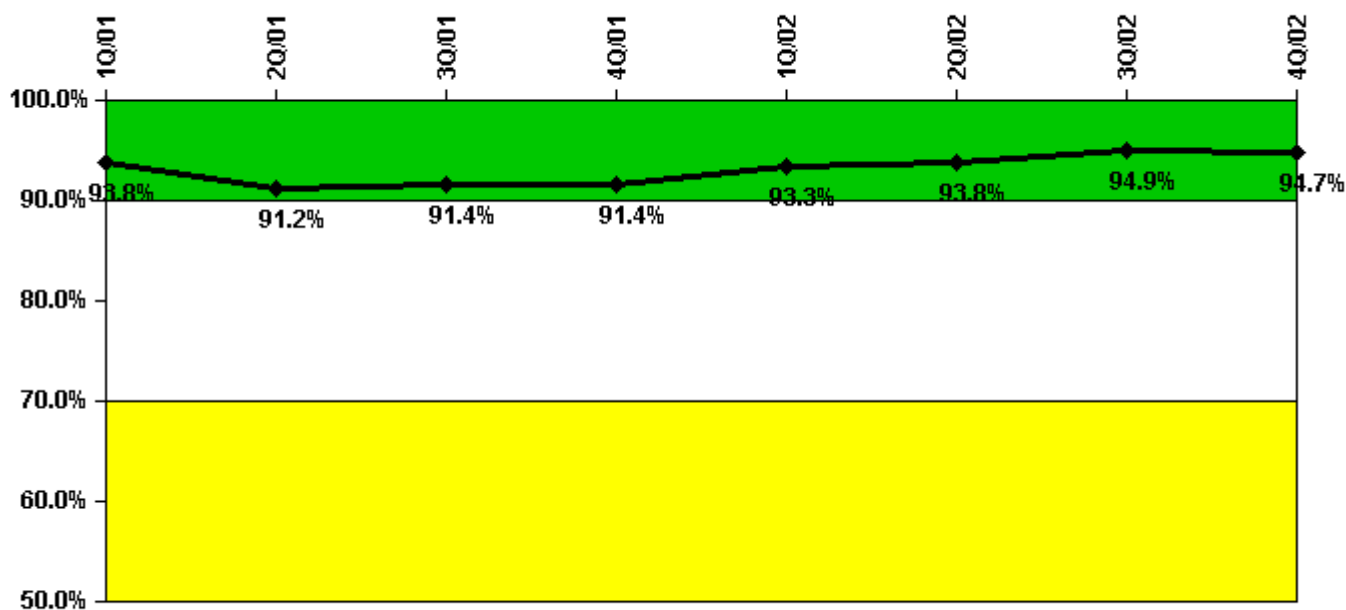
Licensee Comments:

3/02: Corrected data for February 2002 from 2.28 gpm to 2.29 gpm due to data review error.

12/01: Corrected November 2001 data from 2.23 gpm to 2.27 gpm due to data review error.

9/01: Corrected data for September 2001 from 2.04 gpm to 2.06 gpm due to data review error.

Drill/Exercise Performance



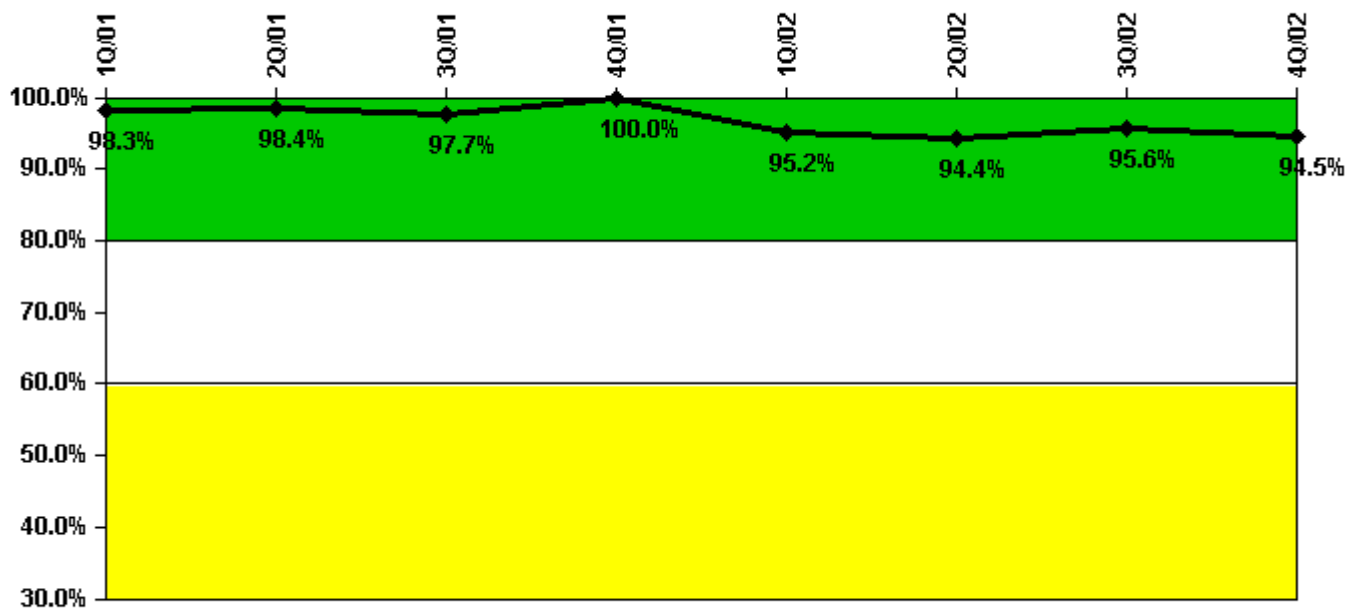
Thresholds: White < 90.0% Yellow < 70.0%

Notes

Drill/Exercise Performance	1Q/01	2Q/01	3Q/01	4Q/01	1Q/02	2Q/02	3Q/02	4Q/02
Successful opportunities	31.0	13.0	2.0	6.0	34.0	1.0	23.0	15.0
Total opportunities	32.0	16.0	2.0	6.0	34.0	2.0	24.0	16.0
Indicator value	93.8%	91.2%	91.4%	91.4%	93.3%	93.8%	94.9%	94.7%

Licensee Comments: none

ERO Drill Participation



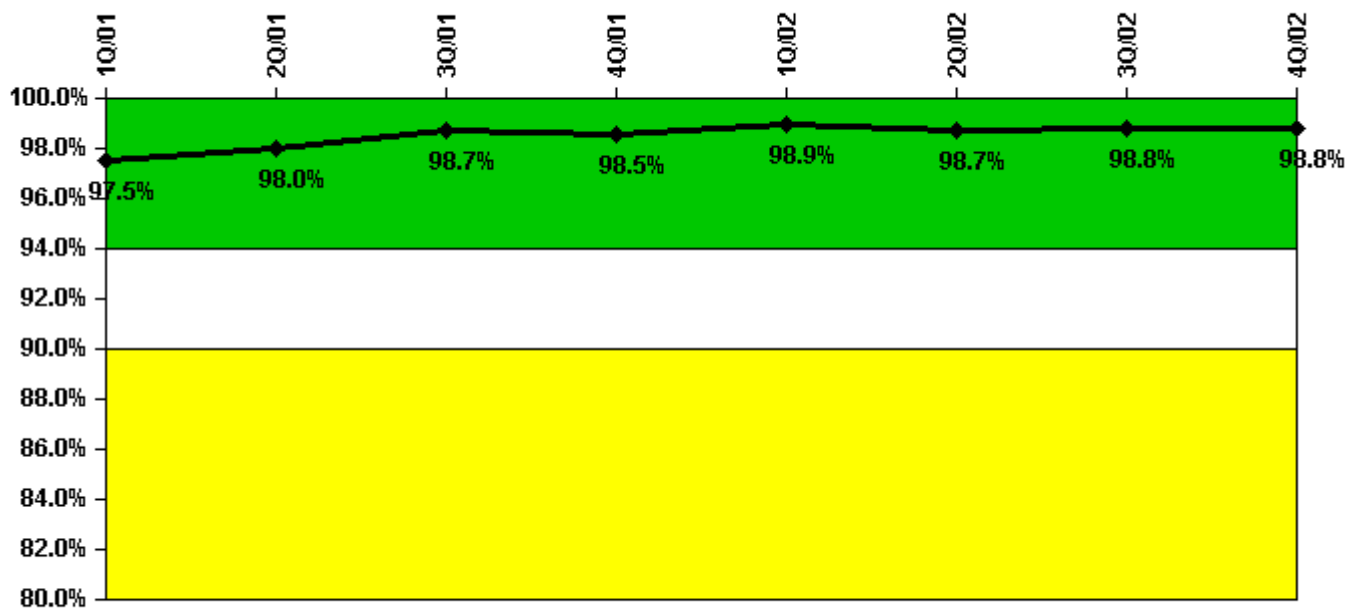
Thresholds: White < 80.0% Yellow < 60.0%

Notes

ERO Drill Participation	1Q/01	2Q/01	3Q/01	4Q/01	1Q/02	2Q/02	3Q/02	4Q/02
Participating Key personnel	57.0	63.0	42.0	42.0	40.0	119.0	43.0	137.0
Total Key personnel	58.0	64.0	43.0	42.0	42.0	126.0	45.0	145.0
Indicator value	98.3%	98.4%	97.7%	100.0%	95.2%	94.4%	95.6%	94.5%

Licensee Comments: none

Alert & Notification System



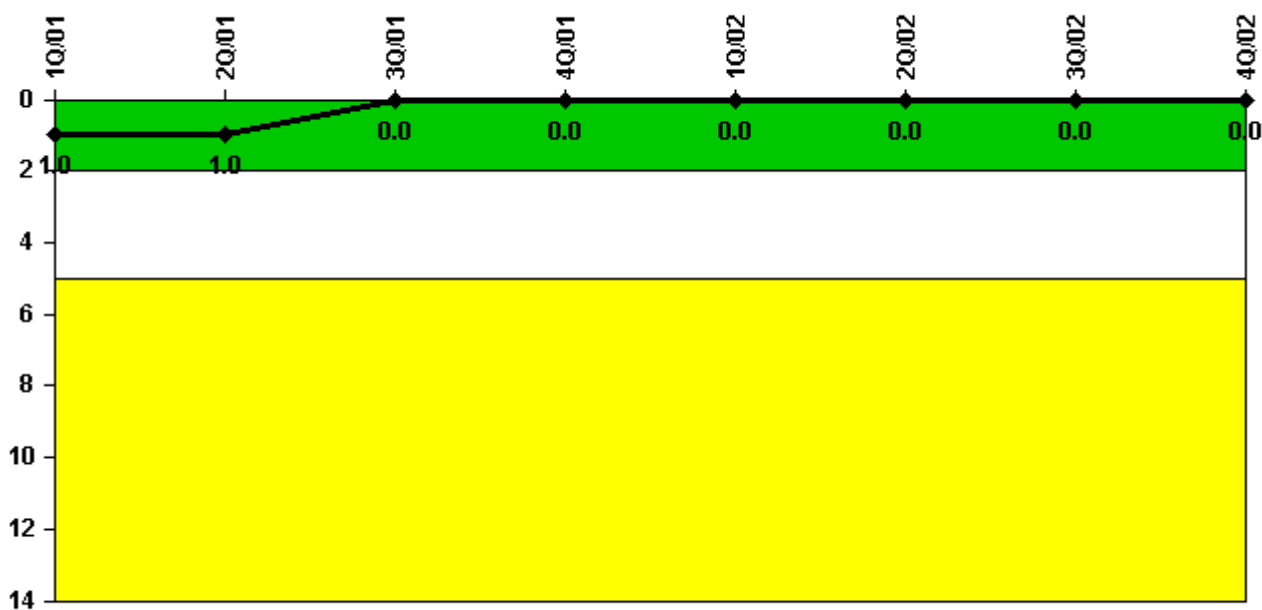
Thresholds: White < 94.0% Yellow < 90.0%

Notes

Alert & Notification System	1Q/01	2Q/01	3Q/01	4Q/01	1Q/02	2Q/02	3Q/02	4Q/02
Successful siren-tests	1239	1240	1236	1254	1256	1233	1241	1254
Total sirens-tests	1261	1261	1261	1261	1261	1261	1261	1261
Indicator value	97.5%	98.0%	98.7%	98.5%	98.9%	98.7%	98.8%	98.8%

Licensee Comments: none

Occupational Exposure Control Effectiveness



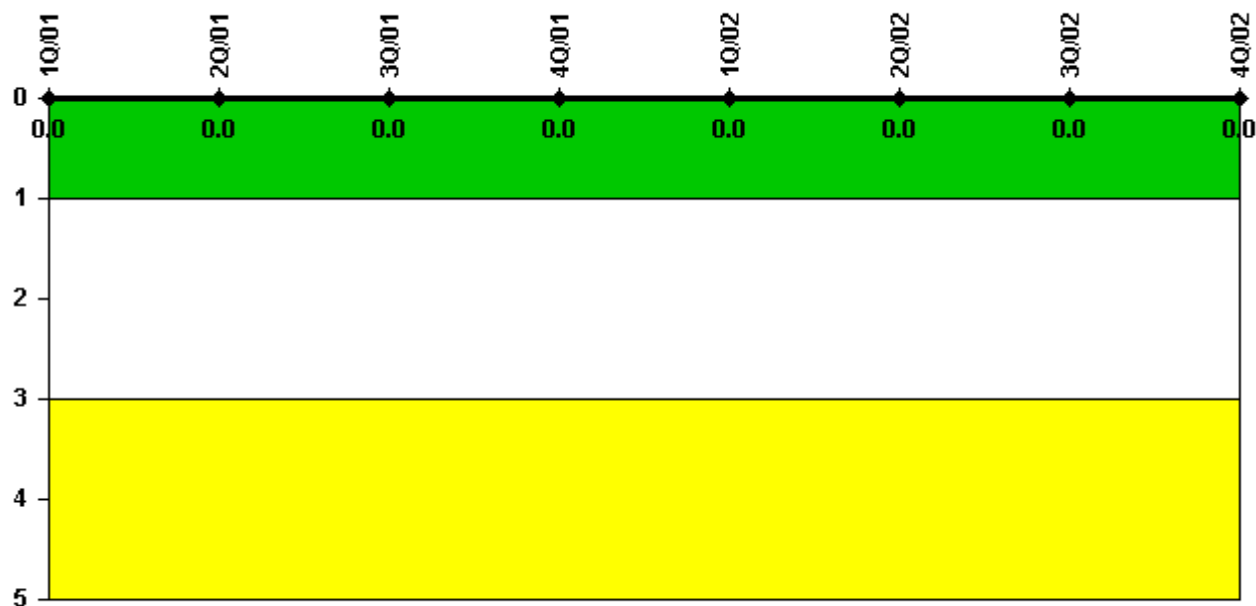
Thresholds: White > 2.0 Yellow > 5.0

Notes

Occupational Exposure Control Effectiveness	1Q/01	2Q/01	3Q/01	4Q/01	1Q/02	2Q/02	3Q/02	4Q/02
High radiation area occurrences	0	0	0	0	0	0	0	0
Very high radiation area occurrences	0	0	0	0	0	0	0	0
Unintended exposure occurrences	0	0	0	0	0	0	0	0
Indicator value	1	1	0	0	0	0	0	0

Licensee Comments: none

RETS/ODCM Radiological Effluent



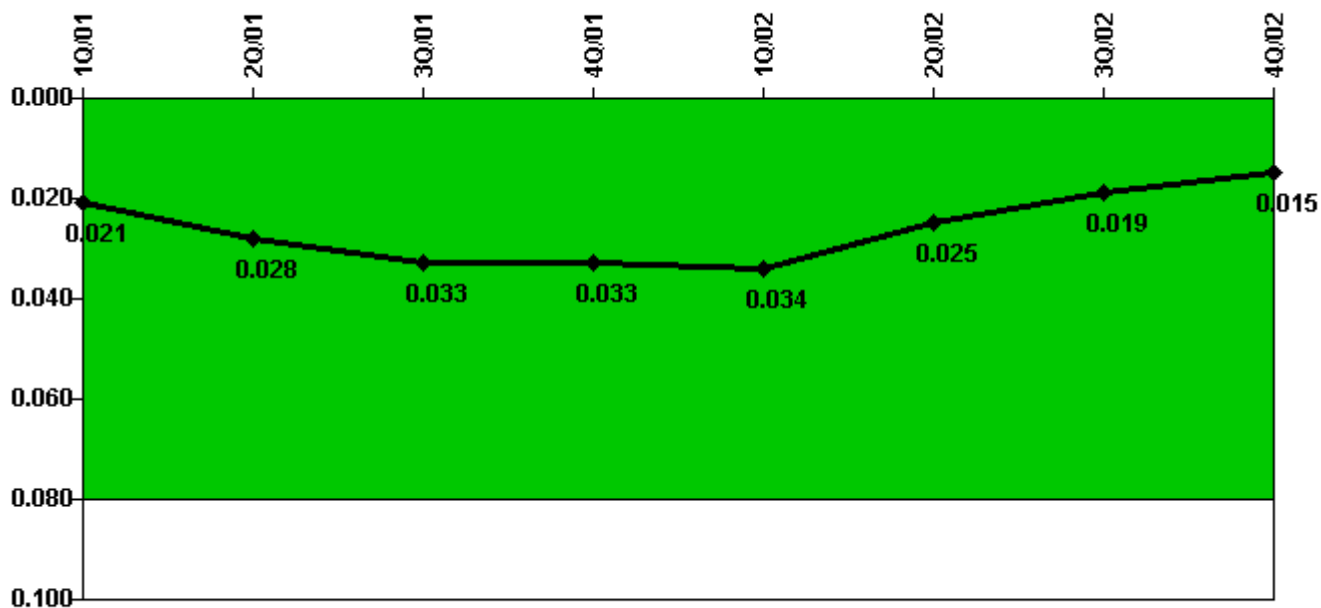
Thresholds: White > 1.0 Yellow > 3.0

Notes

RETS/ODCM Radiological Effluent	1Q/01	2Q/01	3Q/01	4Q/01	1Q/02	2Q/02	3Q/02	4Q/02
RETS/ODCM occurrences	0	0	0	0	0	0	0	0
Indicator value	0	0	0	0	0	0	0	0

Licensee Comments: none

Protected Area Security Performance Index



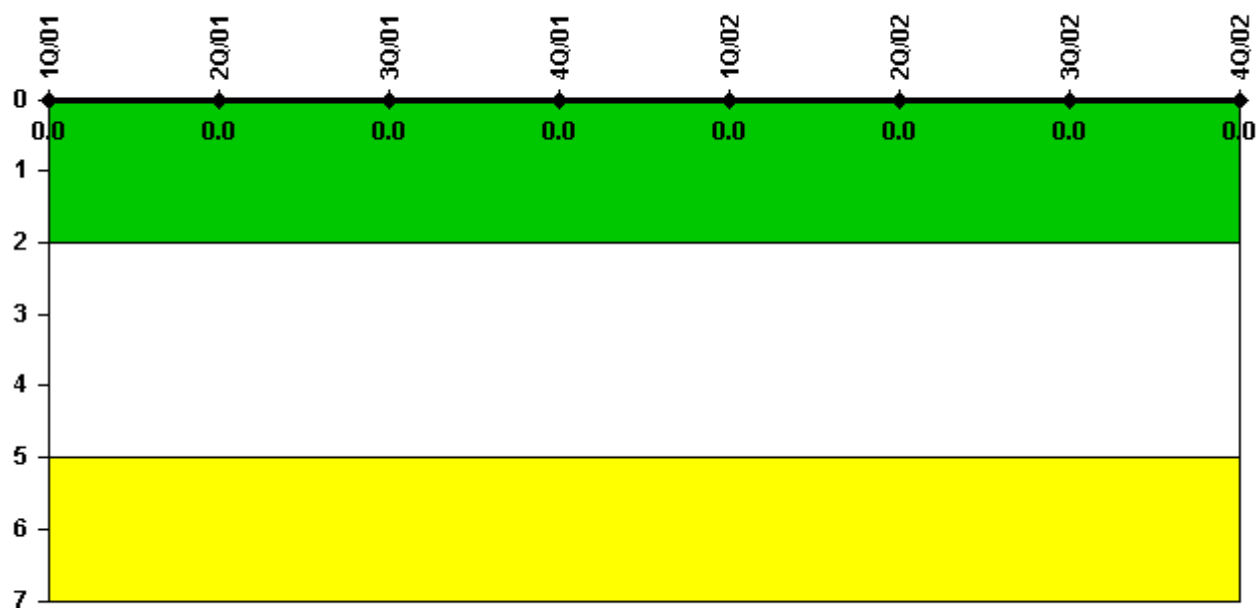
Thresholds: White > 0.080

Notes

Protected Area Security Performance Index	1Q/01	2Q/01	3Q/01	4Q/01	1Q/02	2Q/02	3Q/02	4Q/02
IDS compensatory hours	168.00	435.40	244.60	153.20	179.80	130.60	67.20	55.30
CCTV compensatory hours	0.4	4.4	23.8	20.6	19.5	0.6	22.1	0
IDS normalization factor	1.85	1.85	1.85	1.85	1.85	1.85	1.85	1.85
CCTV normalization factor	1.3	1.3	1.3	1.3	1.3	1.3	1.3	1.3
Index Value	0.021	0.028	0.033	0.033	0.034	0.025	0.019	0.015

Licensee Comments: none

Personnel Screening Program



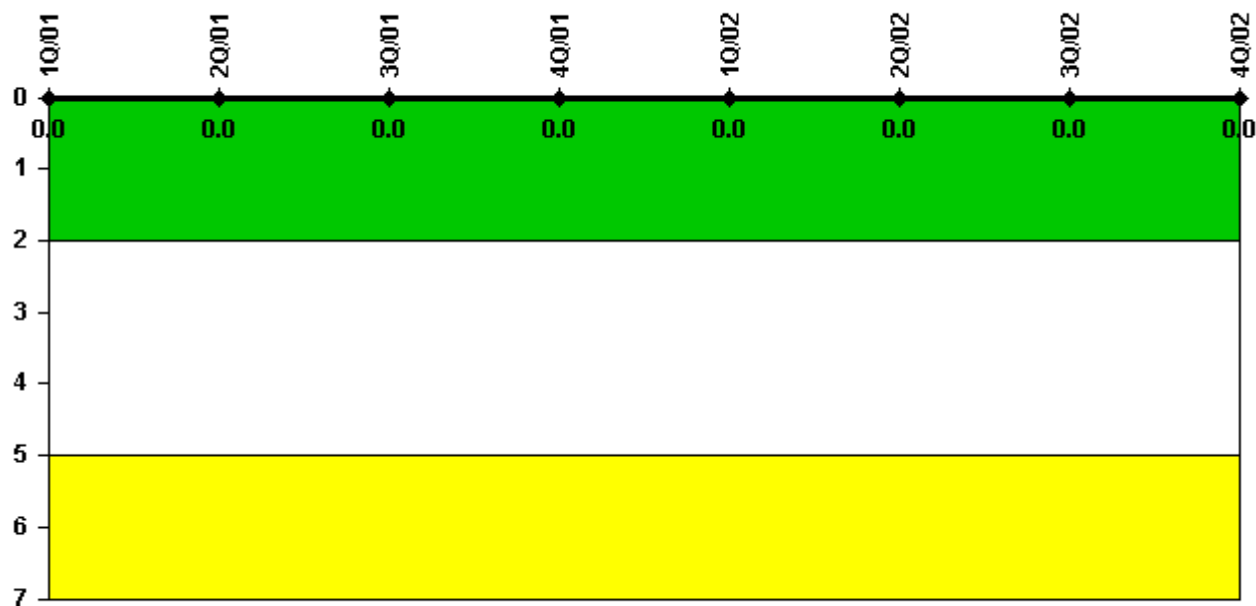
Thresholds: White > 2.0 Yellow > 5.0

Notes

Personnel Screening Program	1Q/01	2Q/01	3Q/01	4Q/01	1Q/02	2Q/02	3Q/02	4Q/02
Program failures	0	0	0	0	0	0	0	0
Indicator value	0	0	0	0	0	0	0	0

Licensee Comments: none

FFD/Personnel Reliability



Thresholds: White > 2.0 Yellow > 5.0

Notes

FFD/Personnel Reliability	1Q/01	2Q/01	3Q/01	4Q/01	1Q/02	2Q/02	3Q/02	4Q/02
Program Failures	0	0	0	0	0	0	0	0
Indicator value	0	0	0	0	0	0	0	0

Licensee Comments: none

▲ [PI Summary](#) | [Inspection Findings Summary](#) | [Reactor Oversight Process](#)

Last Modified: January 30, 2003