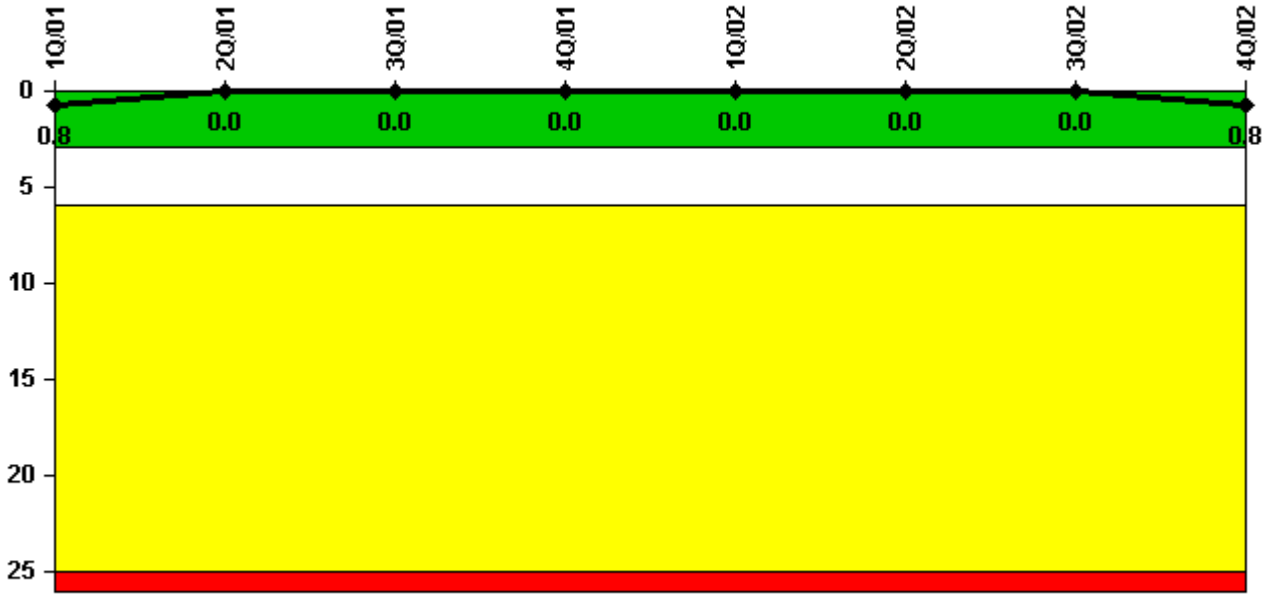


# Palisades

## 4Q/2002 Performance Indicators

Licensee's General Comments: none

### Unplanned Scrams per 7000 Critical Hrs



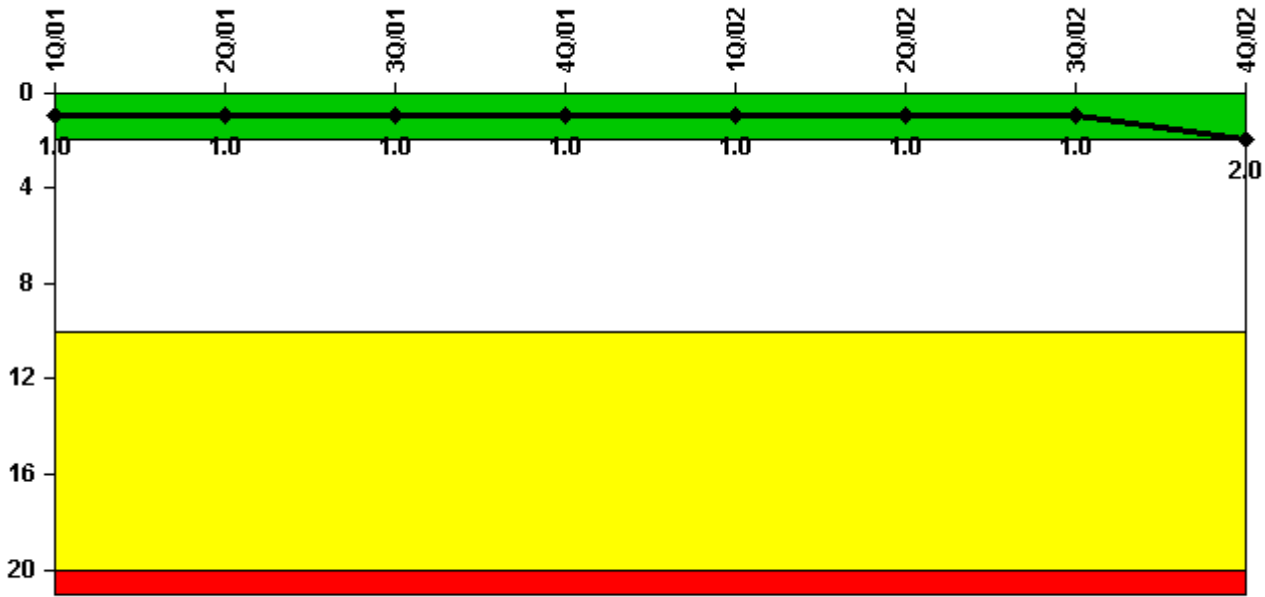
Thresholds: White > 3.0 Yellow > 6.0 Red > 25.0

### Notes

Unplanned Scrams per 7000 Critical Hrs	1Q/01	2Q/01	3Q/01	4Q/01	1Q/02	2Q/02	3Q/02	4Q/02
Unplanned scrams	0	0	0	0	0	0	0	1.0
Critical hours	2133.8	1050.3	0	0	1768.4	2183.0	2208.0	2142.1
Indicator value	0.8	0	0	0	0	0	0	0.8

Licensee Comments: none

### Scrams with Loss of Normal Heat Removal



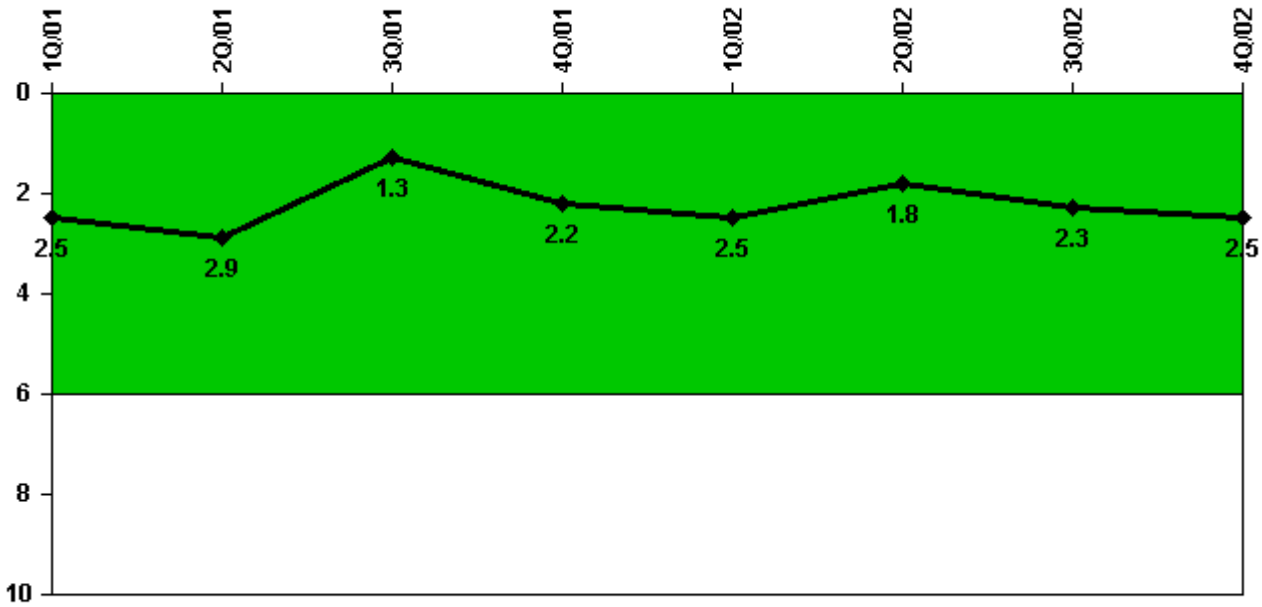
Thresholds: White > 2.0 Yellow > 10.0 Red > 20.0

#### Notes

Scrams with Loss of Normal Heat Removal	1Q/01	2Q/01	3Q/01	4Q/01	1Q/02	2Q/02	3Q/02	4Q/02
Scrams	0	0	0	0	0	0	0	1.0
Indicator value	1.0	1.0	1.0	1.0	1.0	1.0	1.0	2.0

Licensee Comments: none

### Unplanned Power Changes per 7000 Critical Hrs



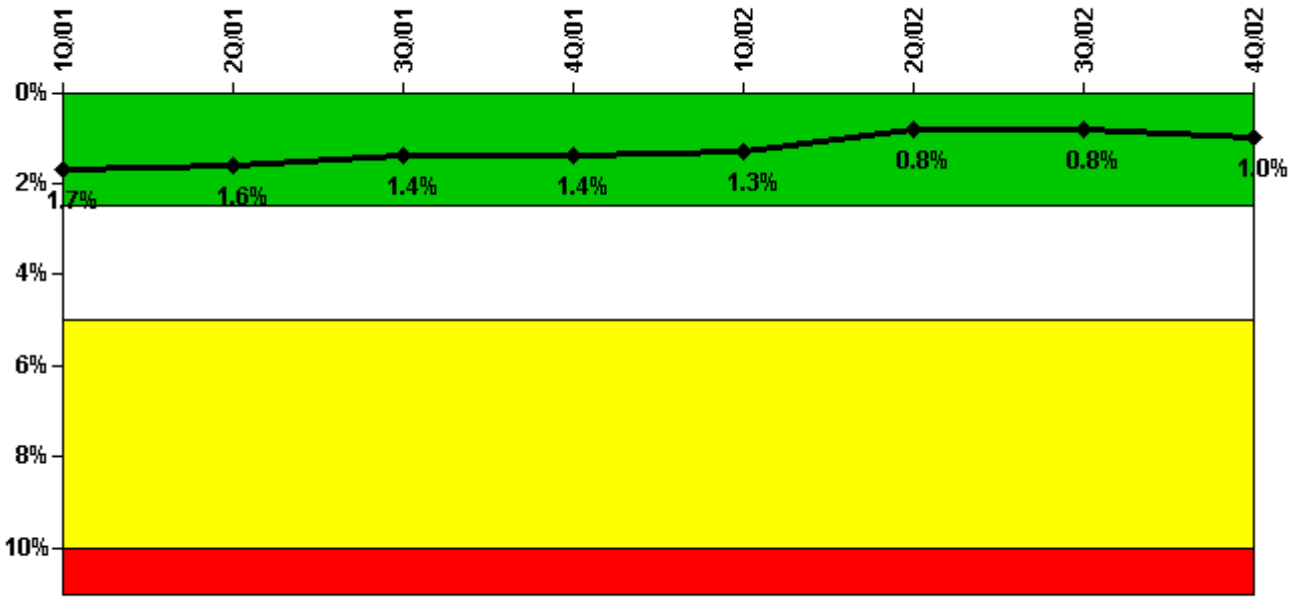
Thresholds: White > 6.0

#### Notes

Unplanned Power Changes per 7000 Critical Hrs	1Q/01	2Q/01	3Q/01	4Q/01	1Q/02	2Q/02	3Q/02	4Q/02
Unplanned power changes	0	1.0	0	0	0	1.0	1.0	1.0
Critical hours	2133.8	1050.3	0	0	1768.4	2183.0	2208.0	2142.1
Indicator value	2.5	2.9	1.3	2.2	2.5	1.8	2.3	2.5

Licensee Comments: none

### Safety System Unavailability, Emergency AC Power



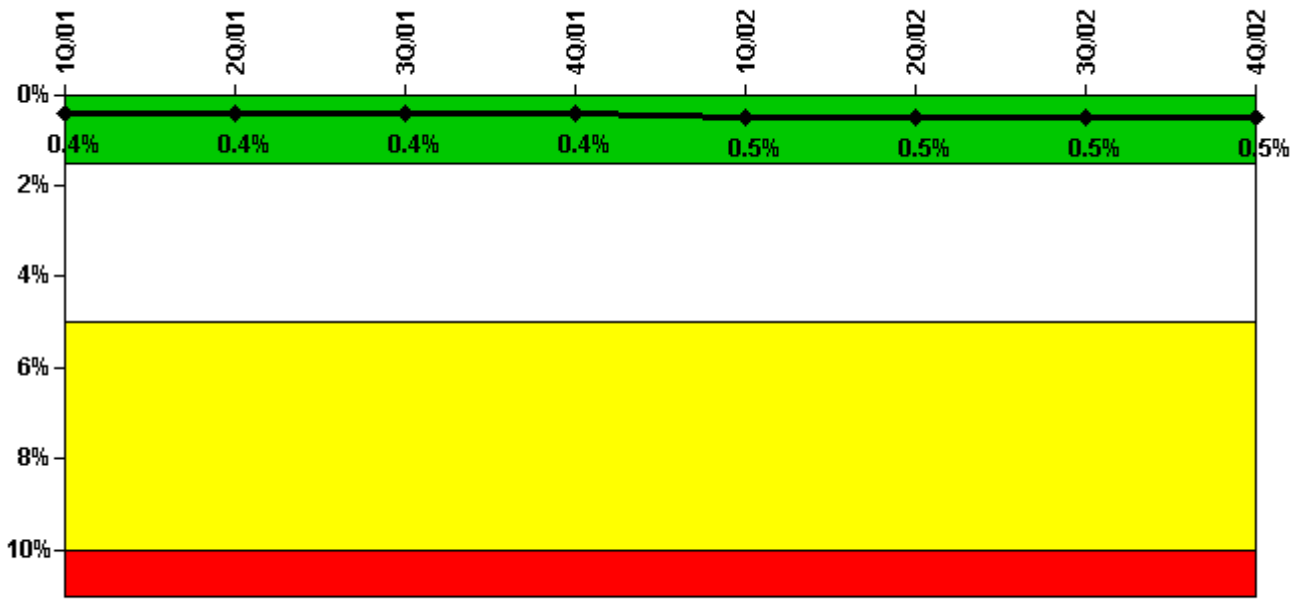
Thresholds: White > 2.5% Yellow > 5.0% Red > 10.0%

#### Notes

Safety System Unavailability, Emergency AC Power	1Q/01	2Q/01	3Q/01	4Q/01	1Q/02	2Q/02	3Q/02	4Q/02
<b>Train 1</b>								
Planned unavailable hours	19.62	0.67	0	0	0.57	47.22	3.75	64.58
Unplanned unavailable hours	0	0	0	0	0	0	5.72	5.07
Fault exposure hours	0	0	0	0	0	0	4.57	0
Effective Reset hours	0	0	0	0	0	0	0	0
Required hours	2160.00	2183.00	2208.00	2209.00	2160.00	2183.00	2208.00	2209.00
<b>Train 2</b>								
Planned unavailable hours	2.20	0.28	0	0	0.99	0.57	3.23	84.63
Unplanned unavailable hours	0	0	0	0	6.18	0	32.32	0
Fault exposure hours	0	0	0	0	0	0	0	0
Effective Reset hours	0	0	0	0	0	0	0	0
Required hours	2160.00	2183.00	2208.00	2209.00	2160.00	2183.00	2208.00	2209.00
<b>Indicator value</b>	<b>1.7%</b>	<b>1.6%</b>	<b>1.4%</b>	<b>1.4%</b>	<b>1.3%</b>	<b>0.8%</b>	<b>0.8%</b>	<b>1.0%</b>

Licensee Comments: none

### Safety System Unavailability, High Pressure Injection System (HPSI)



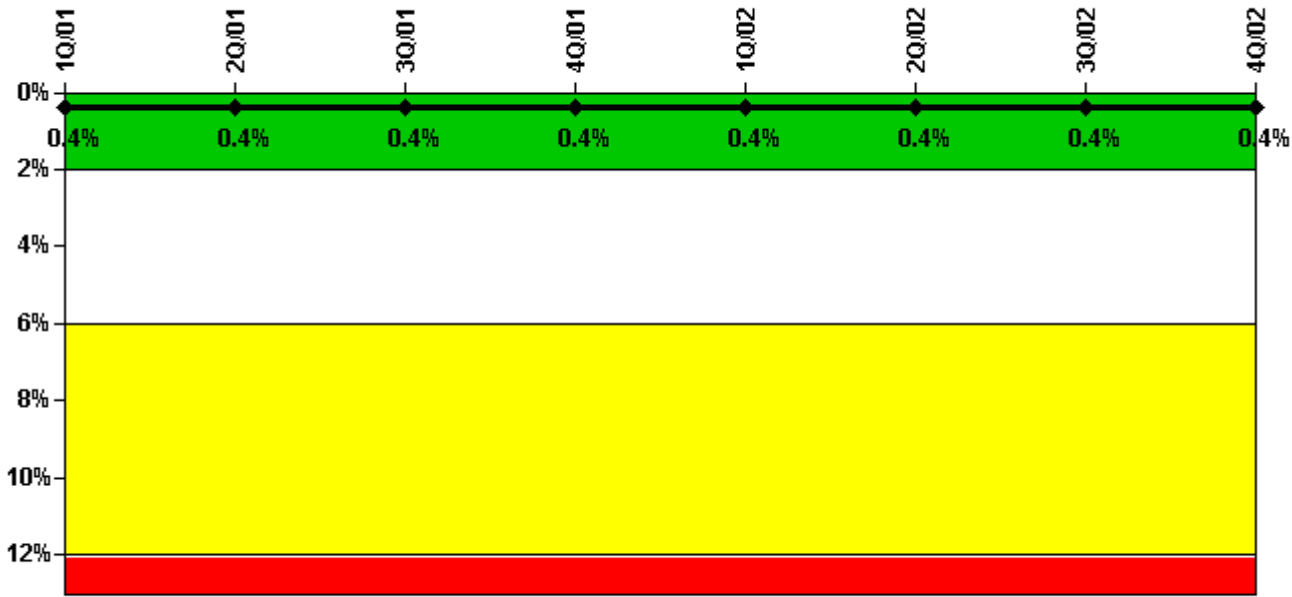
Thresholds: White > 1.5% Yellow > 5.0% Red > 10.0%

#### Notes

Safety System Unavailability, High Pressure Injection System (HPSI)	1Q/01	2Q/01	3Q/01	4Q/01	1Q/02	2Q/02	3Q/02	4Q/02
<b>Train 1</b>								
Planned unavailable hours	16.59	0.27	0	0	10.93	0	6.06	0.68
Unplanned unavailable hours	0	0	0	0	8.72	0	0	9.82
Fault exposure hours	0	0	0	0	0	0	0	0
Effective Reset hours	0	0	0	0	0	0	0	0
Required hours	2146.67	1154.80	0	0	1851.33	2183.00	2208.00	2209.00
<b>Train 2</b>								
Planned unavailable hours	3.72	0	0	0	12.58	23.08	0.37	4.22
Unplanned unavailable hours	0	0	0	0	0	0	0	0
Fault exposure hours	0	0	0	0	0	0	0	0
Effective Reset hours	0	0	0	0	0	0	0	0
Required hours	2146.67	1154.80	0	0	1851.33	2183.00	2208.00	2209.00
Indicator value	0.4%	0.4%	0.4%	0.4%	0.5%	0.5%	0.5%	0.5%

Licensee Comments: none

### Safety System Unavailability, Heat Removal System (AFW)



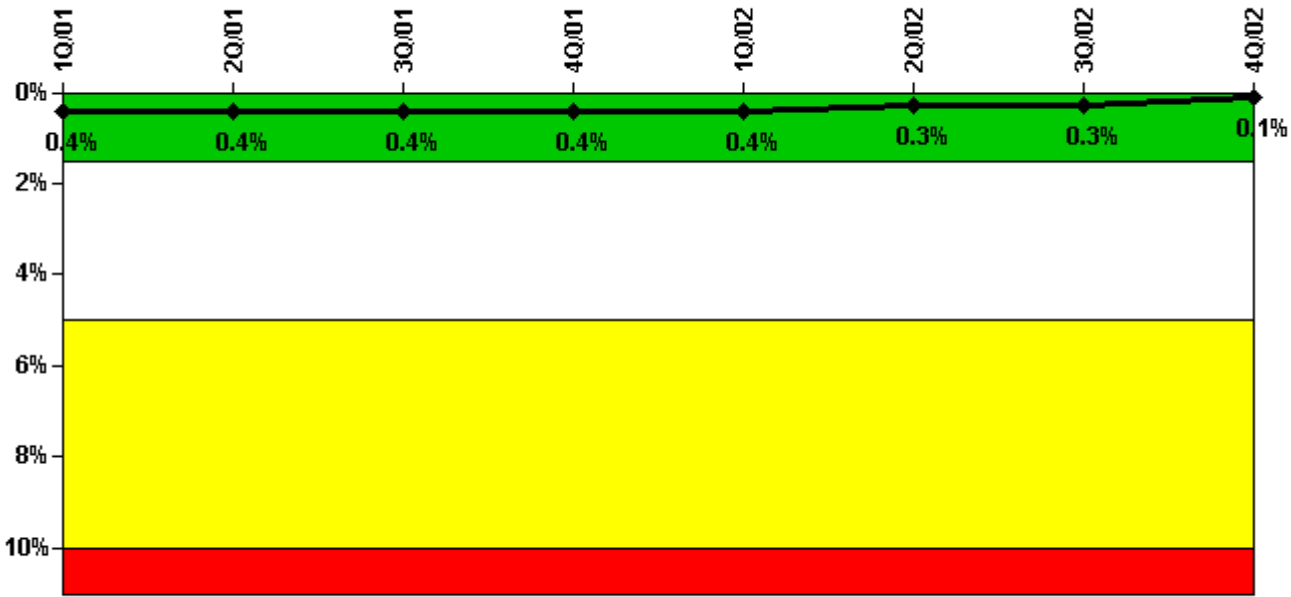
Thresholds: White > 2.0% Yellow > 6.0% Red > 12.0%

#### Notes

Safety System Unavailability, Heat Removal System (AFW)	1Q/01	2Q/01	3Q/01	4Q/01	1Q/02	2Q/02	3Q/02	4Q/02
<b>Train 1</b>								
Planned unavailable hours	22.06	0.73	0	0	4.40	2.48	6.18	5.38
Unplanned unavailable hours	0	0	0	0	0	0	0	0
Fault exposure hours	0	0	0	0	0	0	0	0
Effective Reset hours	0	0	0	0	0	0	0	0
Required hours	2146.67	1154.80	0	0	1851.33	2183.00	2208.00	2209.00
<b>Train 2</b>								
Planned unavailable hours	8.90	0	0	0	1.22	3.55	6.18	2.06
Unplanned unavailable hours	0	0	0	0	0	0	0	0
Fault exposure hours	0	0	0	0	0	0	0	0
Effective Reset hours	0	0	0	0	0	0	0	0
Required hours	2146.67	1072.40	0	0	1768.40	2183.00	2208.00	2209.00
<b>Train 3</b>								
Planned unavailable hours	9.84	0	0	0	1.08	0.73	9.30	0.95
Unplanned unavailable hours	0	0	0	0	0	0	0	0
Fault exposure hours	0	0	0	0	0	0	0	0
Effective Reset hours	0	0	0	0	0	0	0	0
Required hours	2146.67	1154.80	0	0	1851.33	2183.00	2208.00	2209.00
<b>Indicator value</b>	<b>0.4%</b>	<b>0.4%</b>	<b>0.4%</b>	<b>0.4%</b>	<b>0.4%</b>	<b>0.4%</b>	<b>0.4%</b>	<b>0.4%</b>

Licensee Comments: none

### Safety System Unavailability, Residual Heat Removal System



Thresholds: White > 1.5% Yellow > 5.0% Red > 10.0%

#### Notes

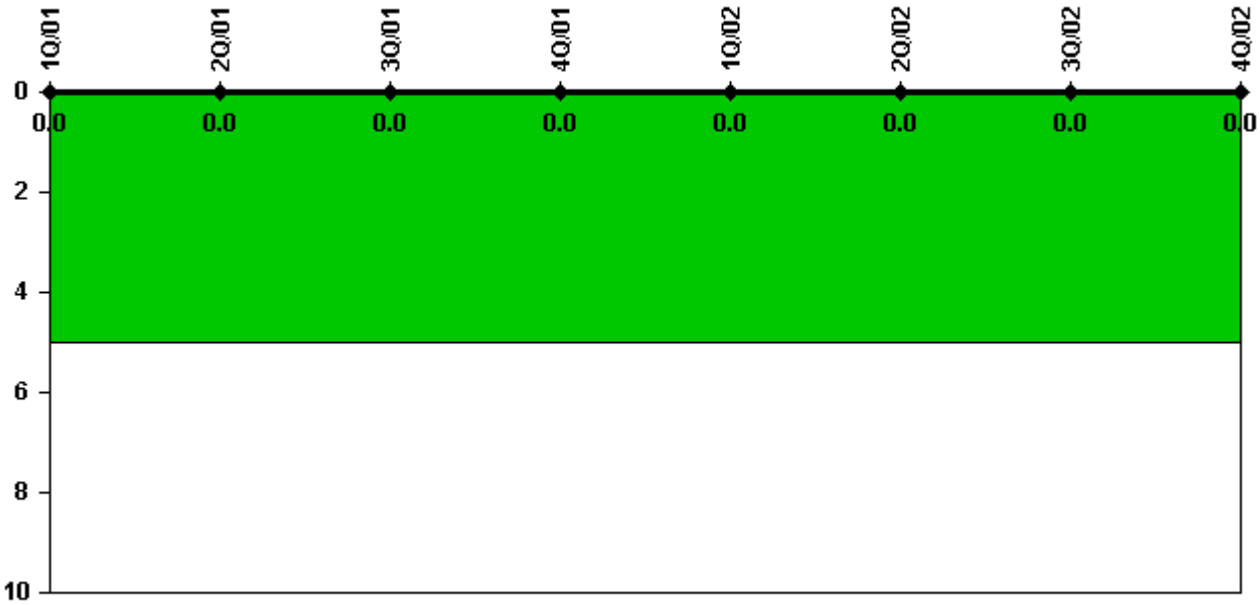
Safety System Unavailability, Residual Heat Removal System	1Q/01	2Q/01	3Q/01	4Q/01	1Q/02	2Q/02	3Q/02	4Q/02
<b>Train 1</b>								
Planned unavailable hours	1.14	0.83	0	0	2.30	0.92	1.01	8.20
Unplanned unavailable hours	0	0	0	0	0	0	0	0
Fault exposure hours	0	0	0	0	0	0	0	0
Effective Reset hours	0	0	0	0	0	0	0	0
Required hours	2146.67	1154.80	0	0	1851.33	2183.00	2208.00	2209.00
<b>Train 2</b>								
Planned unavailable hours	1.17	0	0	0	0	0.66	0	0
Unplanned unavailable hours	0	0	0	0	0	0	0	0
Fault exposure hours	0	0	0	0	0	0	0	0
Effective Reset hours	0	0	0	0	0	0	0	0
Required hours	2146.67	1154.80	0	0	1851.33	2183.00	2208.00	2209.00
<b>Train 3</b>								
Planned unavailable hours	0	0	1.82	1.00	0	0	0	0
Unplanned unavailable hours	0	0	0	0	0	0	0	0
Fault exposure hours	0	0	0	0	0	0	0	0
Effective Reset hours	0	0	0	0	0	0	0	0
Required hours	0	900.70	2208.00	2209.00	302.12	0	0	0
<b>Train 4</b>								
Planned unavailable hours	0	0	1.13	1.20	0	0	0	0
Unplanned unavailable hours	0	0	0	0	0	0	0	0
Fault exposure hours	0	0	0	0	0	0	0	0
Effective Reset hours	0	0	0	0	0	0	0	0
Required hours	0	789.90	2208.00	2209.00	302.12	0	0	0
<b>Indicator value</b>	<b>0.4%</b>	<b>0.4%</b>	<b>0.4%</b>	<b>0.4%</b>	<b>0.4%</b>	<b>0.3%</b>	<b>0.3%</b>	<b>0.1%</b>

Licensee Comments:

4Q/01: Revised Train 3 and 4 Planned unavailability hours based on review and clarification of requirements.

3Q/01: Revised Train 3 and Train 4 Planned Unavailability hours based on review of records and clarification of requirements

### Safety System Functional Failures (PWR)



Thresholds: White > 5.0

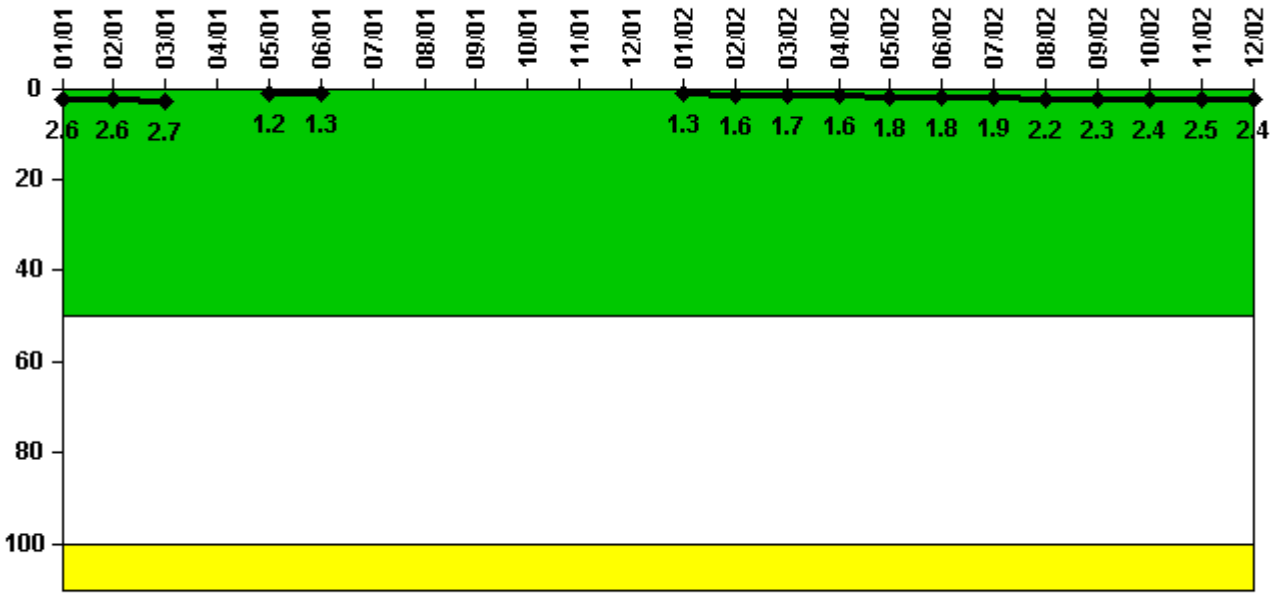
### Notes

Safety System Functional Failures (PWR)	1Q/01	2Q/01	3Q/01	4Q/01	1Q/02	2Q/02	3Q/02	4Q/02
Safety System Functional Failures	0	0	0	0	0	0	0	0
Indicator value	0	0	0	0	0	0	0	0

Licensee Comments: none



### Reactor Coolant System Activity



Thresholds: White > 50.0 Yellow > 100.0

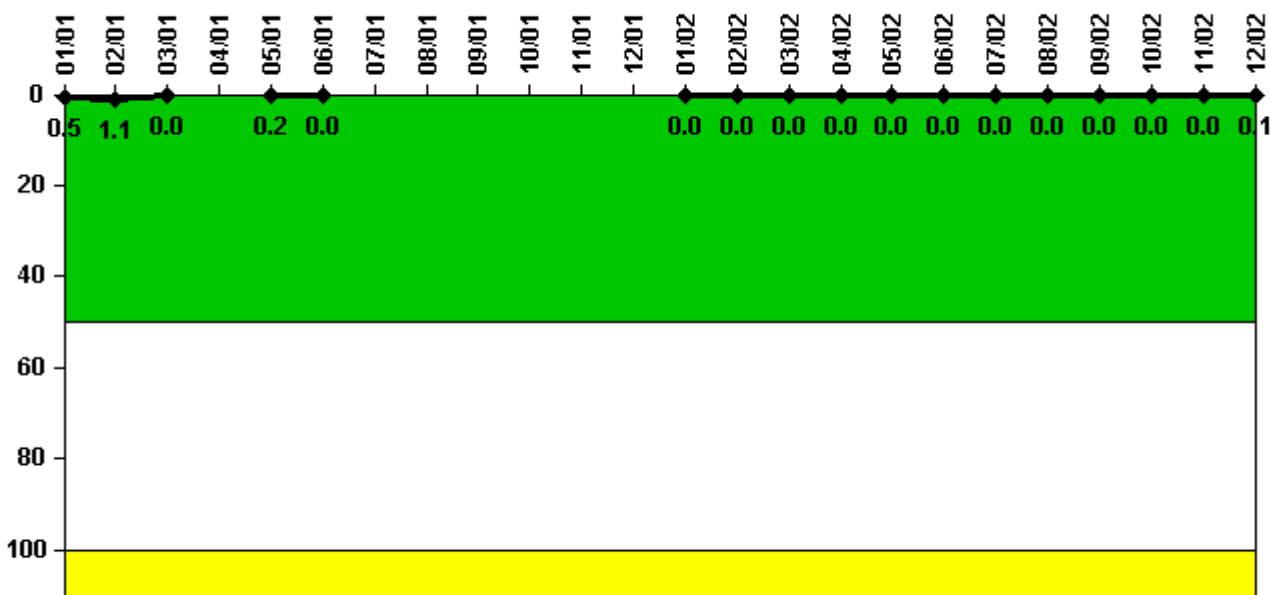
#### Notes

Reactor Coolant System Activity	1/01	2/01	3/01	4/01	5/01	6/01	7/01	8/01	9/01	10/01	11/01	12/01
Maximum activity	0.026300	0.025600	0.026500	N/A	0.012300	0.013000	N/A	N/A	N/A	N/A	N/A	N/A
Technical specification limit	1.0	1.0	1.0	N/A	1.0	1.0	1.0	1.0	1.0	1.0	1.0	1.0
Indicator value	2.6	2.6	2.7	N/A	1.2	1.3	N/A	N/A	N/A	N/A	N/A	N/A

Reactor Coolant System Activity	1/02	2/02	3/02	4/02	5/02	6/02	7/02	8/02	9/02	10/02	11/02	12/02
Maximum activity	0.013300	0.016400	0.017300	0.016300	0.018100	0.018100	0.019300	0.021700	0.022700	0.023500	0.024700	0.024400
Technical specification limit	1.0	1.0	1.0	1.0	1.0	1.0	1.0	1.0	1.0	1.0	1.0	1.0
Indicator value	1.3	1.6	1.7	1.6	1.8	1.8	1.9	2.2	2.3	2.4	2.5	2.4

Licensee Comments: none

### Reactor Coolant System Leakage



Thresholds: White > 50.0 Yellow > 100.0

#### Notes

Reactor Coolant System Leakage	1/01	2/01	3/01	4/01	5/01	6/01	7/01	8/01	9/01	10/01	11/01	12/01
Maximum leakage	0.047	0.112	0	N/A	0.015	0.003	N/A	N/A	N/A	N/A	N/A	N/A
Technical specification limit	10.0	10.0	10.0	N/A	10.0	10.0	10.0	10.0	10.0	10.0	10.0	10.0
Indicator value	0.5	1.1	0	N/A	0.2	0	N/A	N/A	N/A	N/A	N/A	N/A

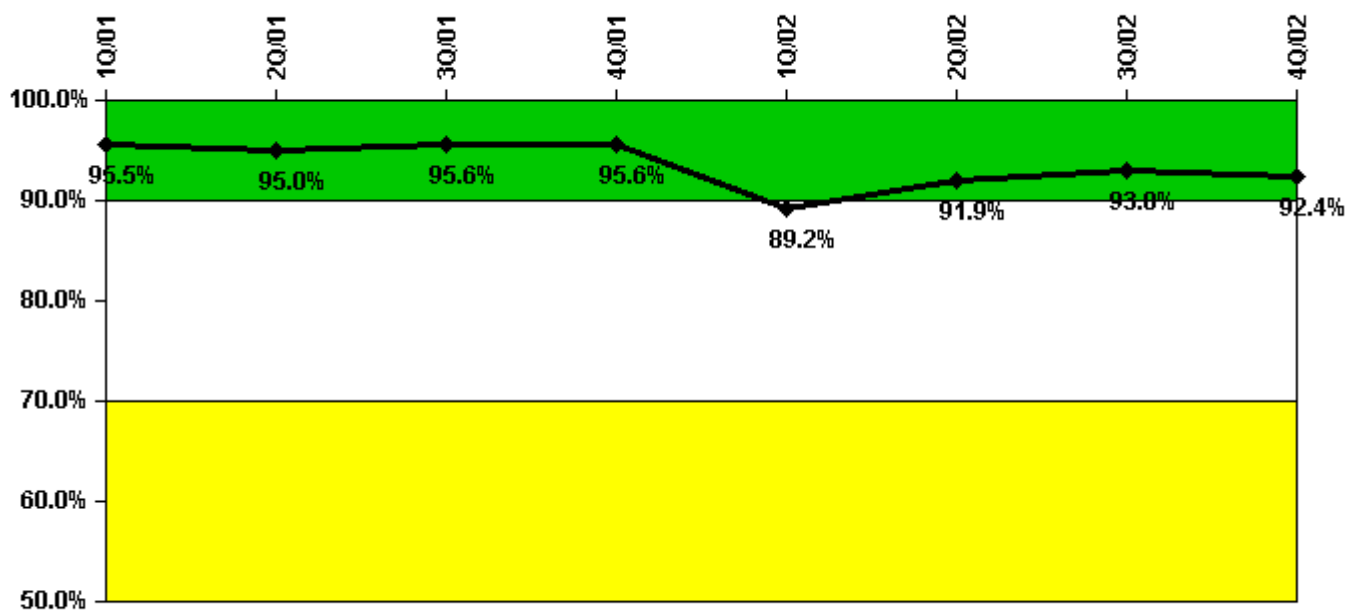
  

Reactor Coolant System Leakage	1/02	2/02	3/02	4/02	5/02	6/02	7/02	8/02	9/02	10/02	11/02	12/02
Maximum leakage	0.003	0	0	0.002	0.002	0.002	0.002	0.002	0.001	0.001	0.001	0.005
Technical specification limit	10.0	10.0	10.0	10.0	10.0	10.0	10.0	10.0	10.0	10.0	10.0	10.0
Indicator value	0	0	0	0	0	0	0	0	0	0	0	0.1

Licensee Comments:

6/02: Revised May 2002 data as a result of review and discovery of an error.

### Drill/Exercise Performance



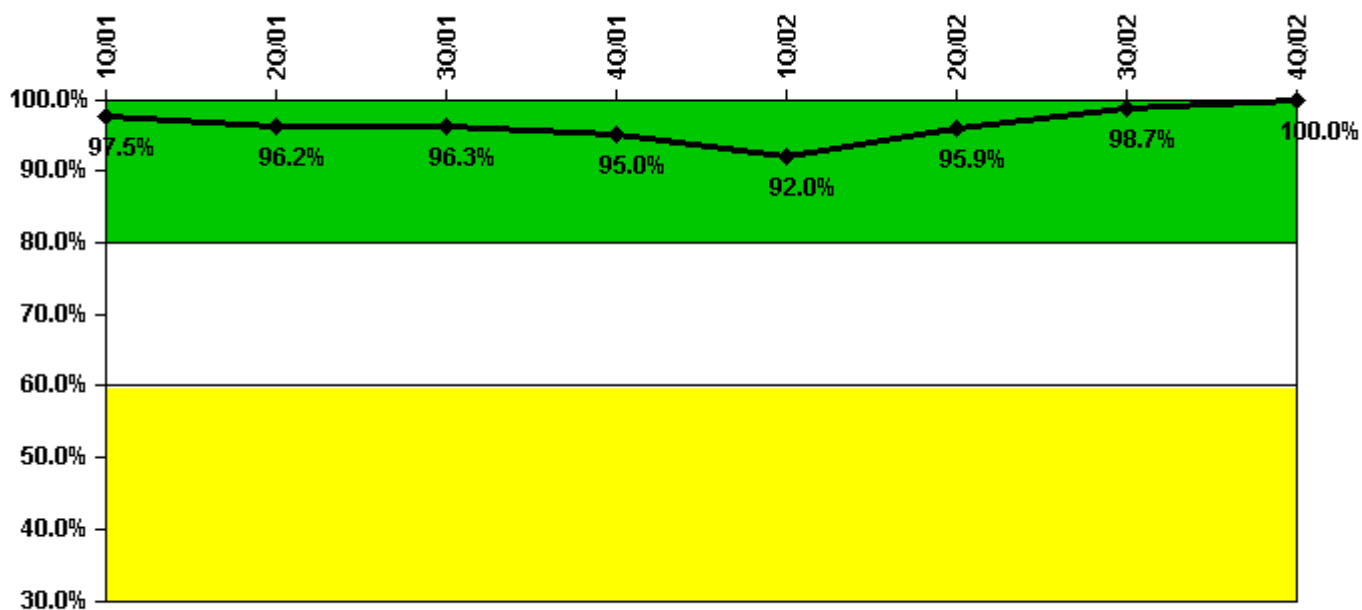
Thresholds: White < 90.0% Yellow < 70.0%

### Notes

Drill/Exercise Performance	1Q/01	2Q/01	3Q/01	4Q/01	1Q/02	2Q/02	3Q/02	4Q/02
Successful opportunities	13.0	0	2.0	0	15.0	69.0	11.0	24.0
Total opportunities	14.0	0	2.0	0	20.0	72.0	11.0	26.0
Indicator value	95.5%	95.0%	95.6%	95.6%	89.2%	91.9%	93.0%	92.4%

Licensee Comments: none

### ERO Drill Participation



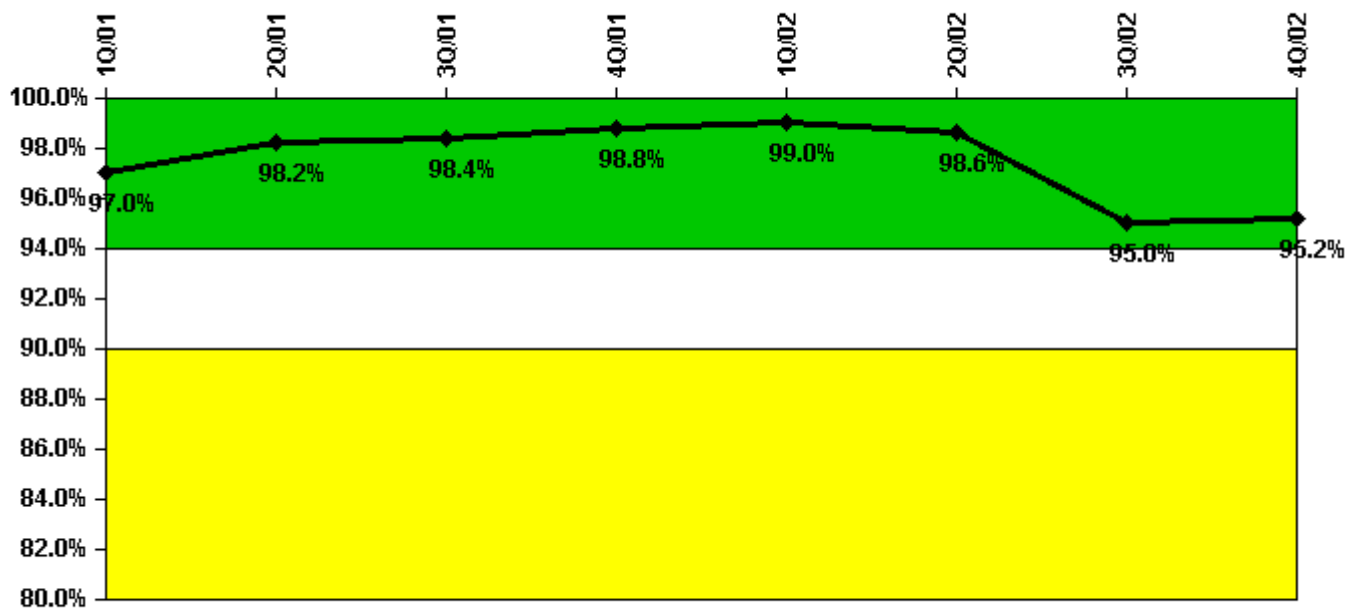
Thresholds: White < 80.0% Yellow < 60.0%

#### Notes

ERO Drill Participation	1Q/01	2Q/01	3Q/01	4Q/01	1Q/02	2Q/02	3Q/02	4Q/02
Participating Key personnel	78.0	76.0	77.0	76.0	69.0	71.0	74.0	76.0
Total Key personnel	80.0	79.0	80.0	80.0	75.0	74.0	75.0	76.0
Indicator value	97.5%	96.2%	96.3%	95.0%	92.0%	95.9%	98.7%	100.0%

Licensee Comments: none

### Alert & Notification System



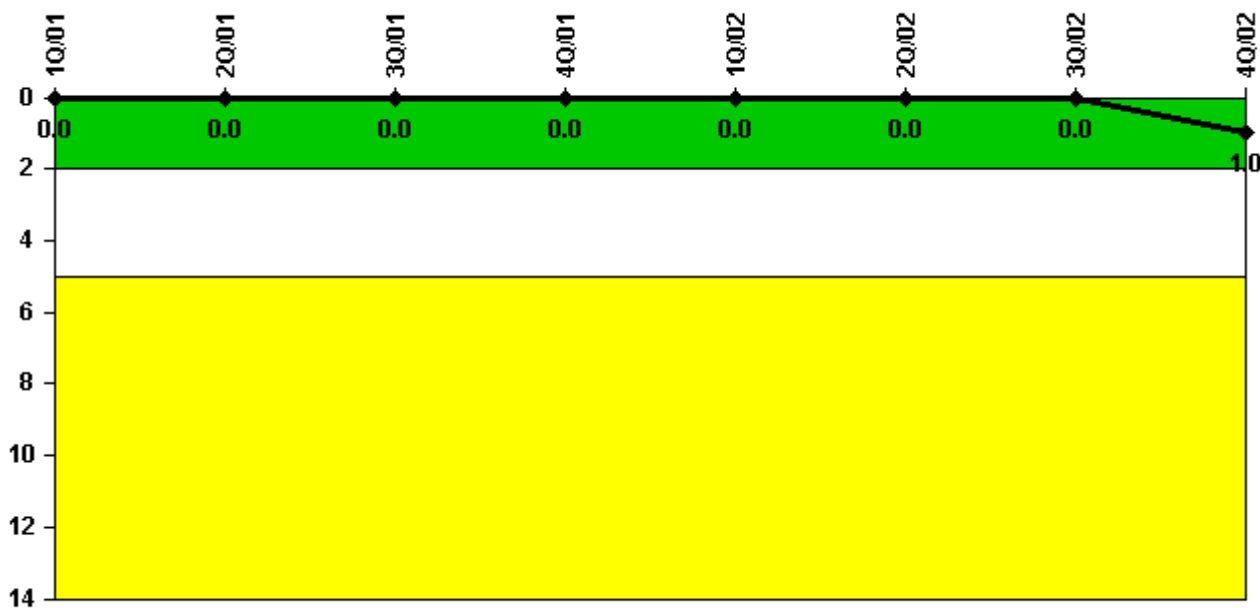
Thresholds: White < 94.0% Yellow < 90.0%

#### Notes

Alert & Notification System	1Q/01	2Q/01	3Q/01	4Q/01	1Q/02	2Q/02	3Q/02	4Q/02
Successful siren-tests	249	251	246	250	251	247	210	252
Total sirens-tests	252	252	252	252	252	252	252	252
Indicator value	97.0%	98.2%	98.4%	98.8%	99.0%	98.6%	95.0%	95.2%

Licensee Comments: none

### Occupational Exposure Control Effectiveness



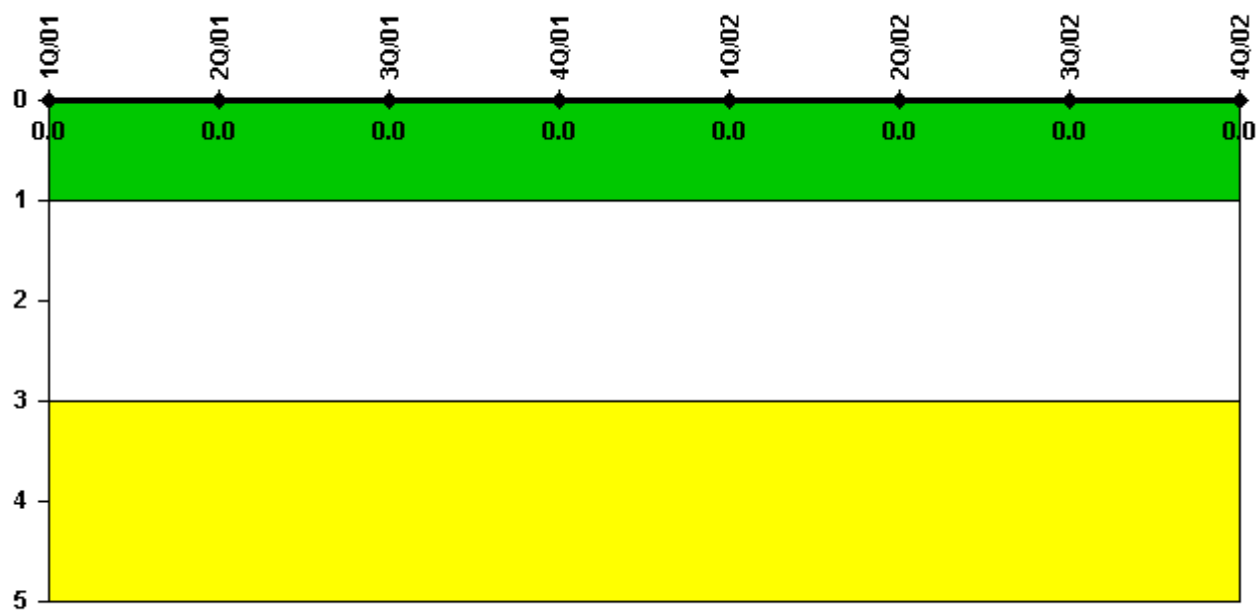
Thresholds: White > 2.0 Yellow > 5.0

#### Notes

Occupational Exposure Control Effectiveness	1Q/01	2Q/01	3Q/01	4Q/01	1Q/02	2Q/02	3Q/02	4Q/02
High radiation area occurrences	0	0	0	0	0	0	0	0
Very high radiation area occurrences	0	0	0	0	0	0	0	0
Unintended exposure occurrences	0	0	0	0	0	0	0	1
Indicator value	0	0	0	0	0	0	0	1

Licensee Comments: none

### RETS/ODCM Radiological Effluent



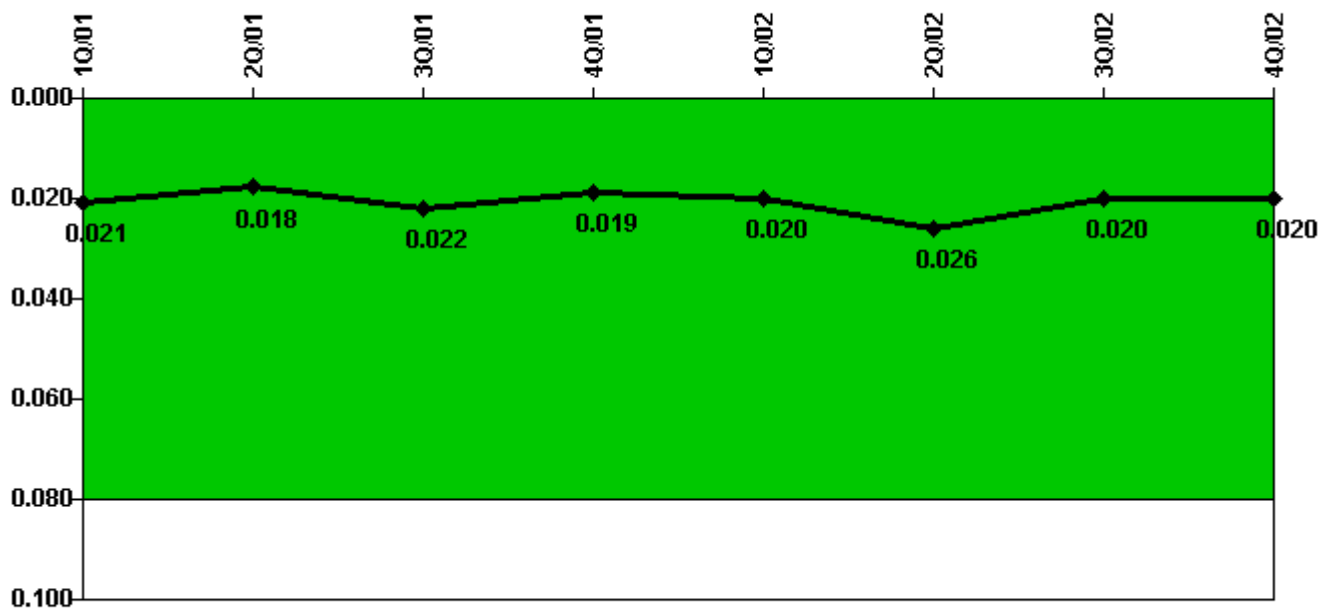
Thresholds: White > 1.0 Yellow > 3.0

**Notes**

RETS/ODCM Radiological Effluent	1Q/01	2Q/01	3Q/01	4Q/01	1Q/02	2Q/02	3Q/02	4Q/02
RETS/ODCM occurrences	0	0	0	0	0	0	0	0
Indicator value	0	0	0	0	0	0	0	0

Licensee Comments: none

### Protected Area Security Performance Index



Thresholds: White > 0.080

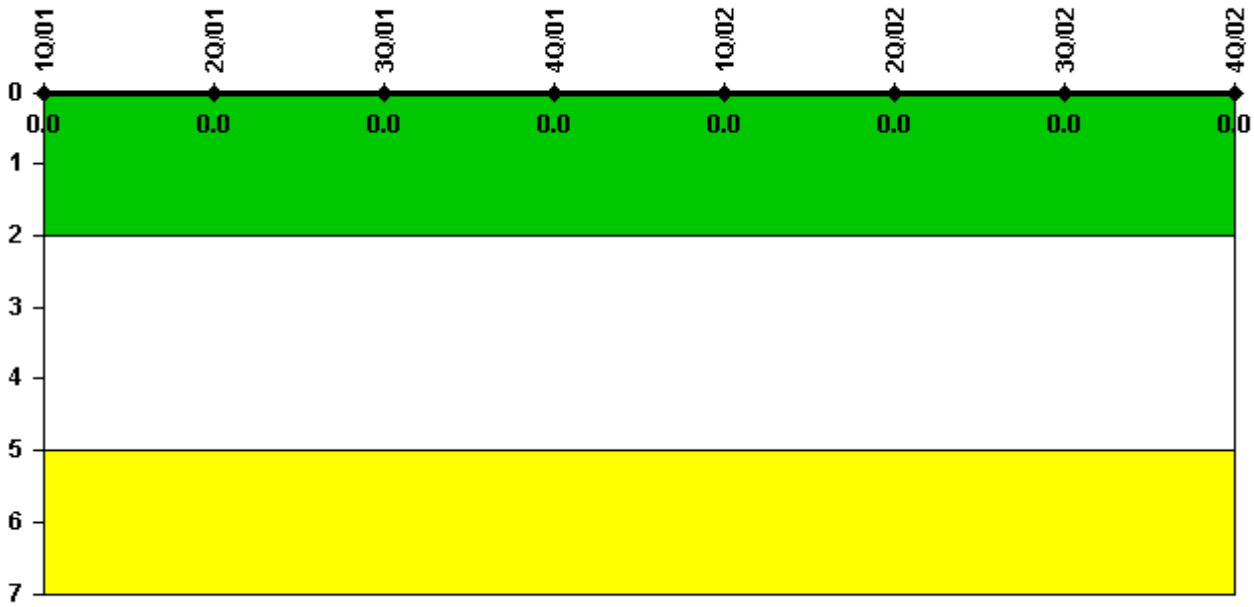
#### Notes

Protected Area Security Performance Index	1Q/01	2Q/01	3Q/01	4Q/01	1Q/02	2Q/02	3Q/02	4Q/02
IDS compensatory hours	64.37	126.28	163.03	136.99	74.69	279.20	22.20	137.42
CCTV compensatory hours	0	0	0	0	0	0	0	0
IDS normalization factor	1.45	1.45	1.45	1.45	1.45	1.45	1.45	1.45
CCTV normalization factor	1.0	1.0	1.0	1.0	1.0	1.0	1.0	1.0
<b>Index Value</b>	<b>0.021</b>	<b>0.018</b>	<b>0.022</b>	<b>0.019</b>	<b>0.020</b>	<b>0.026</b>	<b>0.020</b>	<b>0.020</b>

Licensee Comments: none



### Personnel Screening Program



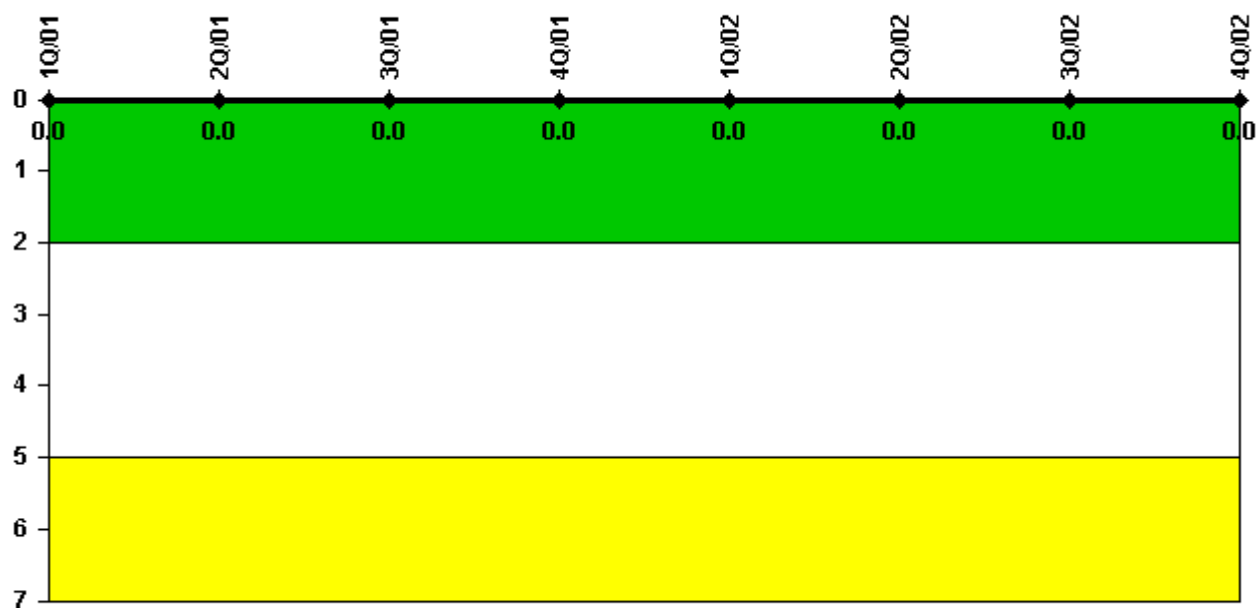
Thresholds: White > 2.0 Yellow > 5.0

#### Notes

Personnel Screening Program	1Q/01	2Q/01	3Q/01	4Q/01	1Q/02	2Q/02	3Q/02	4Q/02
Program failures	0	0	0	0	0	0	0	0
Indicator value	0	0	0	0	0	0	0	0

Licensee Comments: none

### FFD/Personnel Reliability



Thresholds: White > 2.0 Yellow > 5.0

#### Notes

FFD/Personnel Reliability	1Q/01	2Q/01	3Q/01	4Q/01	1Q/02	2Q/02	3Q/02	4Q/02
Program Failures	0	0	0	0	0	0	0	0
Indicator value	0	0	0	0	0	0	0	0

Licensee Comments: none

▲ [PI Summary](#) | [Inspection Findings Summary](#) | [Reactor Oversight Process](#)

Last Modified: January 30, 2003