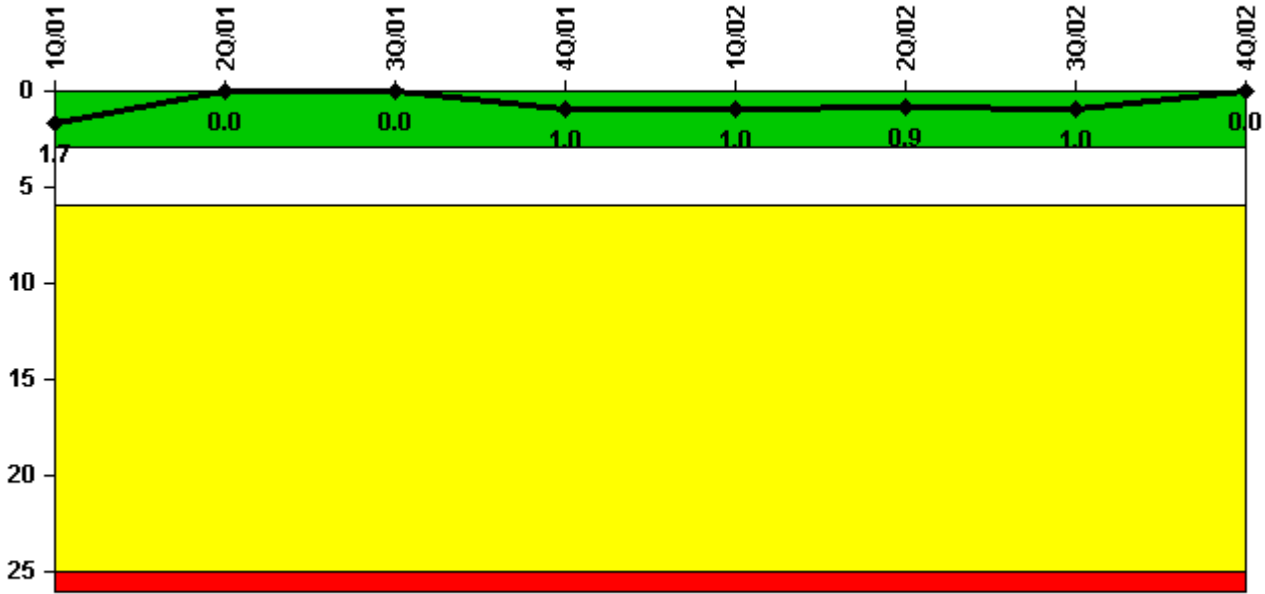


North Anna 2

4Q/2002 Performance Indicators

Licensee's General Comments: none

Unplanned Scrams per 7000 Critical Hrs



Thresholds: White > 3.0 Yellow > 6.0 Red > 25.0

Notes

Unplanned Scrams per 7000 Critical Hrs	1Q/01	2Q/01	3Q/01	4Q/01	1Q/02	2Q/02	3Q/02	4Q/02
Unplanned scrams	0	0	0	1.0	0	0	0	0
Critical hours	1626.4	1979.3	2208.0	1017.0	2160.0	2183.0	1657.7	0
Indicator value	1.7	0	0	1.0	1.0	0.9	1.0	0

Licensee Comments: none

Scrams with Loss of Normal Heat Removal



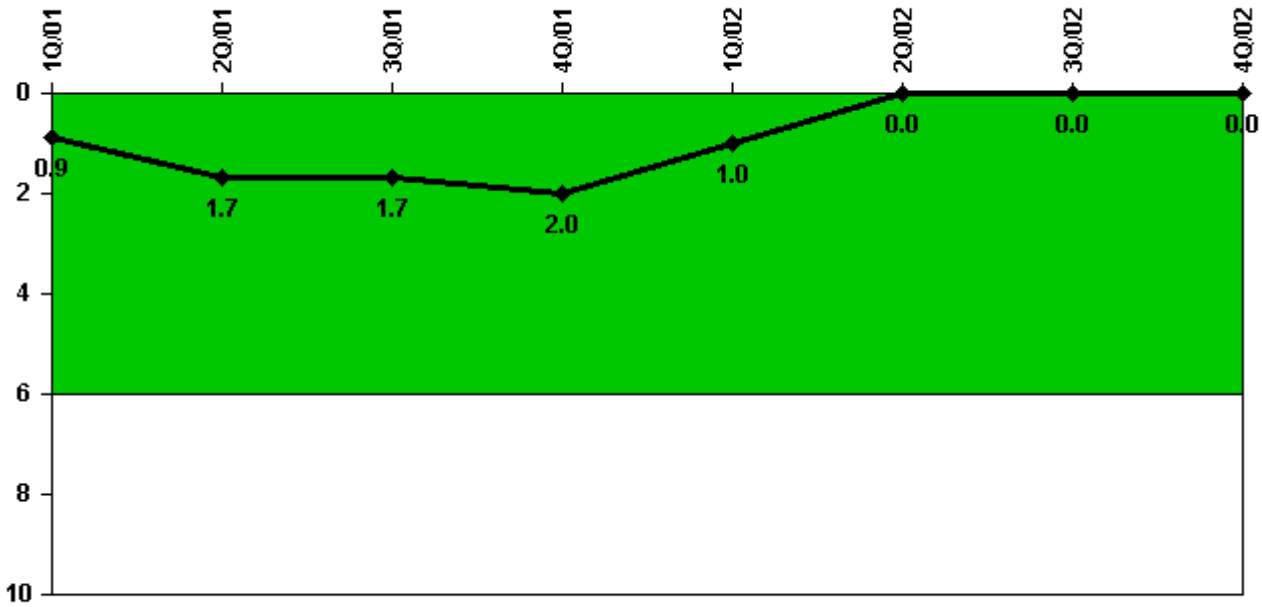
Thresholds: White > 2.0 Yellow > 10.0 Red > 20.0

Notes

Scrams with Loss of Normal Heat Removal	1Q/01	2Q/01	3Q/01	4Q/01	1Q/02	2Q/02	3Q/02	4Q/02
Scrams	0	0	0	0	0	0	0	0
Indicator value	0	0	0	0	0	0	0	0

Licensee Comments: none

Unplanned Power Changes per 7000 Critical Hrs



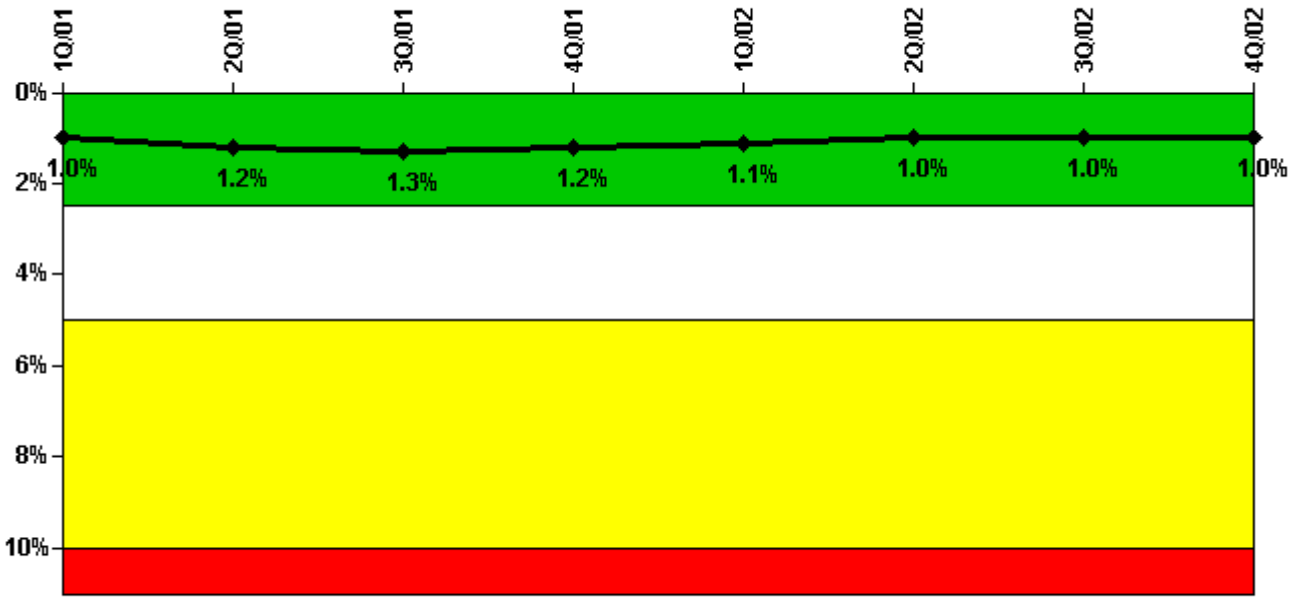
Thresholds: White > 6.0

Notes

Unplanned Power Changes per 7000 Critical Hrs	1Q/01	2Q/01	3Q/01	4Q/01	1Q/02	2Q/02	3Q/02	4Q/02
Unplanned power changes	1.0	1.0	0	0	0	0	0	0
Critical hours	1626.4	1979.3	2208.0	1017.0	2160.0	2183.0	1657.7	0
Indicator value	0.9	1.7	1.7	2.0	1.0	0	0	0

Licensee Comments: none

Safety System Unavailability, Emergency AC Power



Thresholds: White > 2.5% Yellow > 5.0% Red > 10.0%

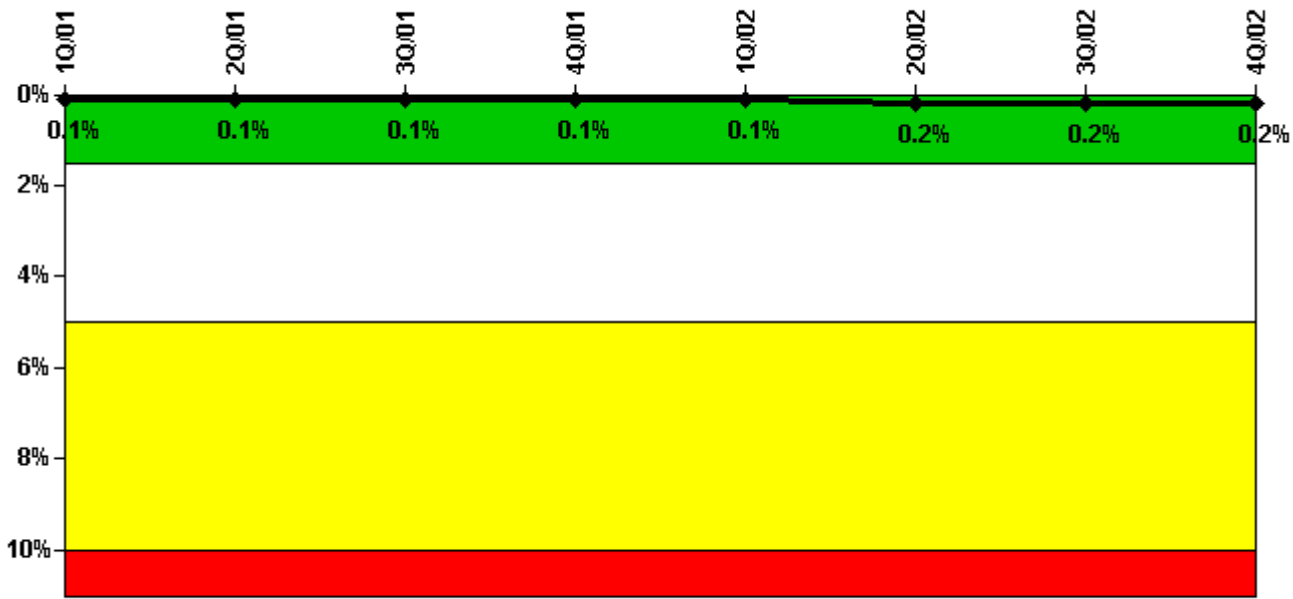
Notes

Safety System Unavailability, Emergency AC Power	1Q/01	2Q/01	3Q/01	4Q/01	1Q/02	2Q/02	3Q/02	4Q/02
Train 1								
Planned unavailable hours	44.53	58.32	10.45	33.28	13.03	5.75	9.14	0
Unplanned unavailable hours	1.19	0	0	0	0.17	0	0	0
Fault exposure hours	0	0	0	0	0	0	0	0
Effective Reset hours	0	0	0	0	0	0	0	0
Required hours	1915.75	2094.90	2208.00	1654.37	2160.00	2183.00	1939.19	861.00
Train 2								
Planned unavailable hours	10.40	68.80	29.19	20.13	9.28	5.72	12.30	0
Unplanned unavailable hours	0	0	0	0	0	0	15.35	0
Fault exposure hours	0	0	0	0	0	0	0	0
Effective Reset hours	0	0	0	0	0	0	0	0
Required hours	1915.75	2094.90	2208.00	1654.37	2160.00	2183.00	1939.19	1348.00
Indicator value	1.0%	1.2%	1.3%	1.2%	1.1%	1.0%	1.0%	1.0%

Licensee Comments:

3Q/02: 15.35 unplanned, unavailable hrs. incorrectly included in 8/2002, Train 2, planned, unavailable hrs. This change had no effect on the color of the indicator.

Safety System Unavailability, High Pressure Injection System (HPSI)



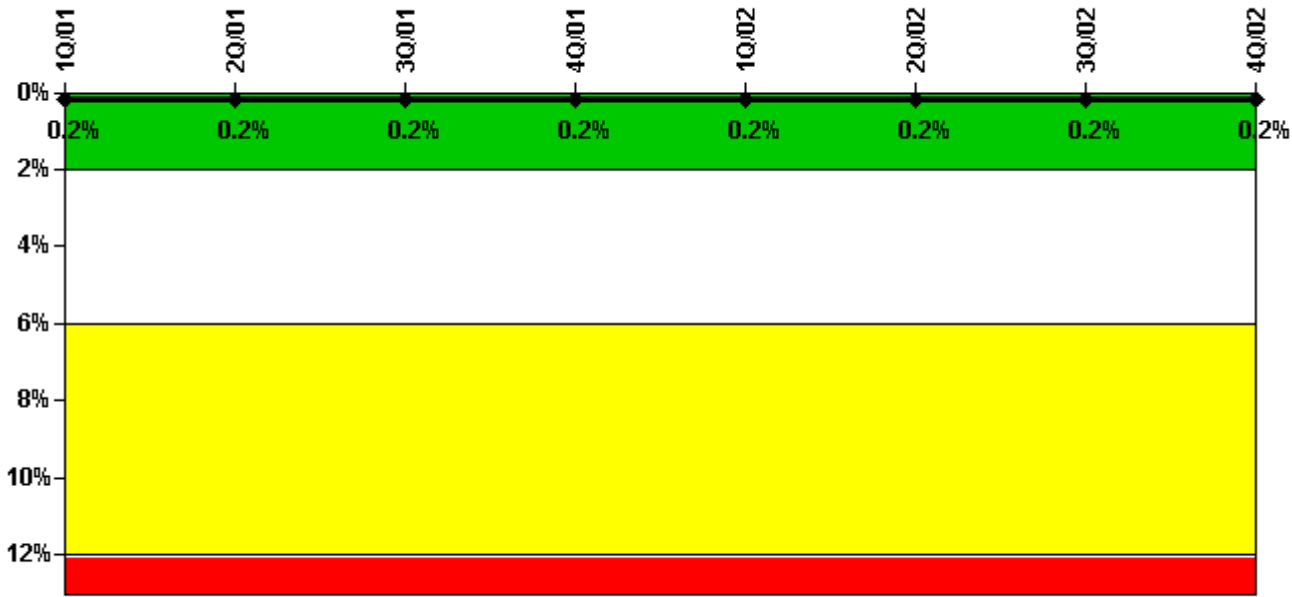
Thresholds: White > 1.5% Yellow > 5.0% Red > 10.0%

Notes

Safety System Unavailability, High Pressure Injection System (HPSI)	1Q/01	2Q/01	3Q/01	4Q/01	1Q/02	2Q/02	3Q/02	4Q/02
Train 1								
Planned unavailable hours	1.13	1.22	1.60	1.95	1.38	0.27	12.08	0
Unplanned unavailable hours	0	0	0	0	0	1.38	0	0
Fault exposure hours	0	0	0	0	0	0	0	0
Effective Reset hours	0	0	0	0	0	0	0	0
Required hours	1671.50	1998.90	2208.00	1095.73	2160.00	2183.00	1668.50	0
Train 2								
Planned unavailable hours	1.47	1.58	1.43	1.50	1.65	0	0.99	0
Unplanned unavailable hours	0	0	0	0	0.42	7.05	10.90	0
Fault exposure hours	0	0	0	0	0	0	0	0
Effective Reset hours	0	0	0	0	0	0	0	0
Required hours	1671.50	1998.90	2208.00	1095.73	2160.00	2183.00	1668.50	0
Indicator value	0.1%	0.1%	0.1%	0.1%	0.1%	0.2%	0.2%	0.2%

Licensee Comments: none

Safety System Unavailability, Heat Removal System (AFW)



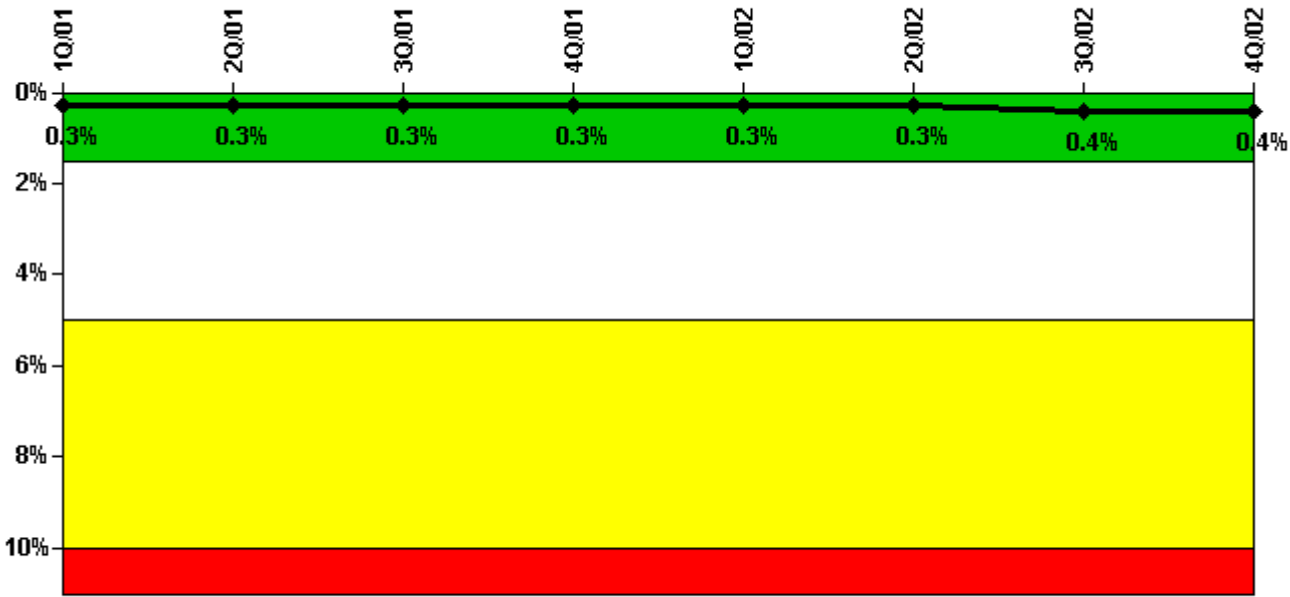
Thresholds: White > 2.0% Yellow > 6.0% Red > 12.0%

Notes

Safety System Unavailability, Heat Removal System (AFW)	1Q/01	2Q/01	3Q/01	4Q/01	1Q/02	2Q/02	3Q/02	4Q/02
Train 1								
Planned unavailable hours	1.32	0.85	0.92	1.23	14.08	1.47	0	0
Unplanned unavailable hours	0	0	0	0	0	0	0	0
Fault exposure hours	0	0	0	0	0	0	0	0
Effective Reset hours	0	0	0	0	0	0	0	0
Required hours	1667.17	1998.90	2208.00	1085.55	2160.00	2183.00	1670.37	0
Train 2								
Planned unavailable hours	1.23	1.48	1.12	0	1.22	6.68	1.53	0
Unplanned unavailable hours	0	0	0	0	0	0	0	0
Fault exposure hours	0	0	0	0	0	0	0	0
Effective Reset hours	0	0	0	0	0	0	0	0
Required hours	1667.70	1998.90	2208.00	1085.55	2160.00	2183.00	1670.37	0
Train 3								
Planned unavailable hours	3.53	6.58	2.98	5.05	5.22	3.90	12.12	0
Unplanned unavailable hours	0	0	0	0	0	0	0	0
Fault exposure hours	0	0	0	0	0	0	0	0
Effective Reset hours	0	0	0	0	0	0	0	0
Required hours	1667.17	1998.90	2208.00	1085.55	2160.00	2183.00	1666.63	0
Indicator value	0.2%	0.2%	0.2%	0.2%	0.2%	0.2%	0.2%	0.2%

Licensee Comments: none

Safety System Unavailability, Residual Heat Removal System



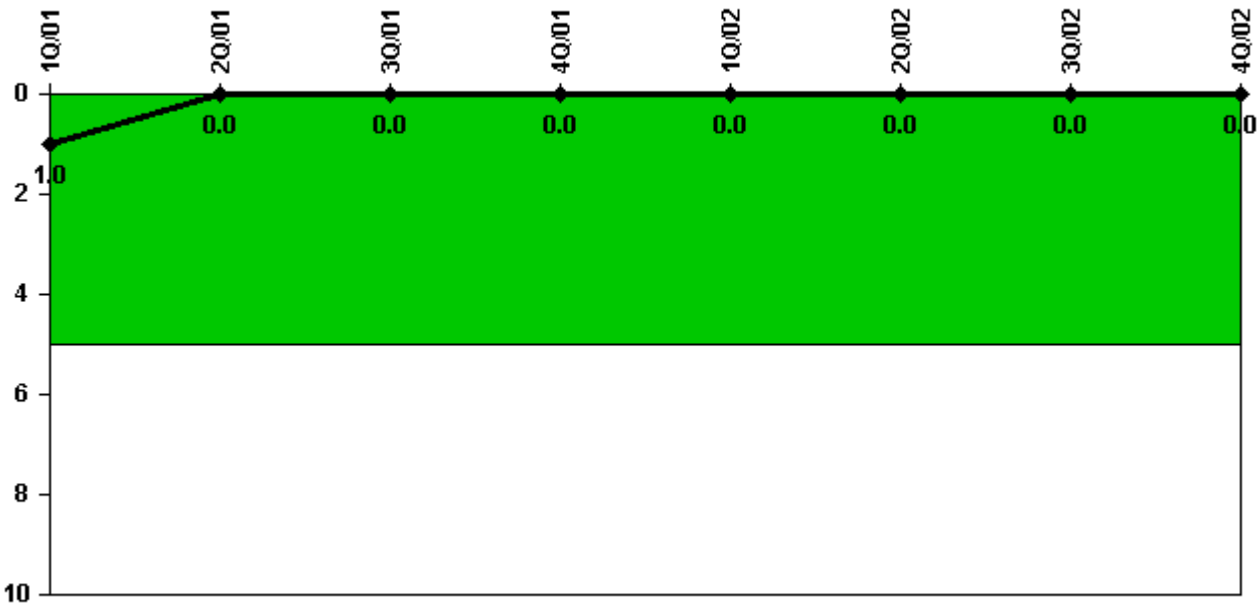
Thresholds: White > 1.5% Yellow > 5.0% Red > 10.0%

Notes

Safety System Unavailability, Residual Heat Removal System	1Q/01	2Q/01	3Q/01	4Q/01	1Q/02	2Q/02	3Q/02	4Q/02
Train 1								
Planned unavailable hours	29.31	5.04	4.18	1.85	4.16	19.60	31.84	0
Unplanned unavailable hours	0	0	0	0	0	0	0	0
Fault exposure hours	0	0	0	0	0	0	0	0
Effective Reset hours	0	0	0	0	0	0	0	0
Required hours	1671.50	2006.70	2208.00	1095.73	2160.00	2183.00	1670.37	0
Train 2								
Planned unavailable hours	26.81	10.20	2.50	0	3.18	10.60	33.44	0
Unplanned unavailable hours	0	0	0	0	0	0	1.98	0
Fault exposure hours	0	0	0	0	0	0	0	0
Effective Reset hours	0	0	0	0	0	0	0	0
Required hours	1671.50	2006.70	2208.00	1095.73	2160.00	2183.00	1670.37	0
Train 3								
Planned unavailable hours	5.95	0	0	5.36	0	3.17	2.32	0
Unplanned unavailable hours	0	0	0	0	0	0	0	0
Fault exposure hours	0	0	0	0	0	0	0	0
Effective Reset hours	0	0	0	0	0	0	0	0
Required hours	1917.30	2183.00	2208.00	1736.49	2160.00	2183.00	1816.60	0
Train 4								
Planned unavailable hours	9.05	7.13	0	3.15	0	5.93	1.08	0
Unplanned unavailable hours	0	0	0	0	0	0	0	0
Fault exposure hours	0	0	0	0	0	0	0	0
Effective Reset hours	0	0	0	0	0	0	0	0
Required hours	1917.30	2183.00	2208.00	1736.49	2160.00	2183.00	1816.60	0
Indicator value	0.3%	0.3%	0.3%	0.3%	0.3%	0.3%	0.4%	0.4%

Licensee Comments: none

Safety System Functional Failures (PWR)



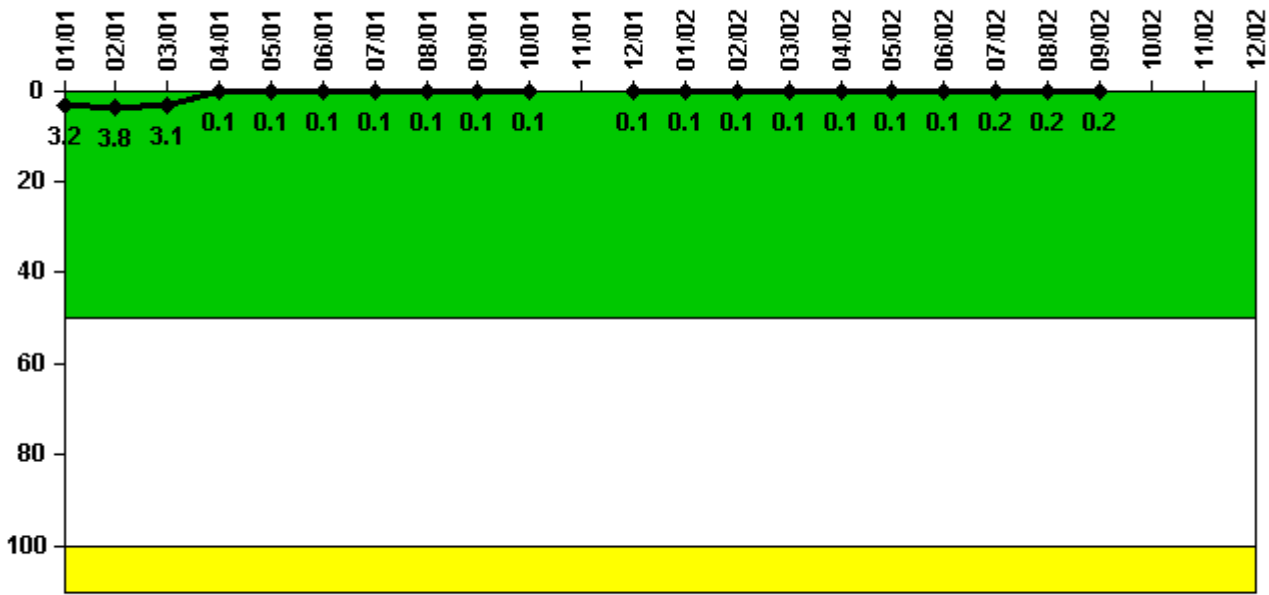
Thresholds: White > 5.0

Notes

Safety System Functional Failures (PWR)	1Q/01	2Q/01	3Q/01	4Q/01	1Q/02	2Q/02	3Q/02	4Q/02
Safety System Functional Failures	0	0	0	0	0	0	0	0
Indicator value	1	0	0	0	0	0	0	0

Licensee Comments: none

Reactor Coolant System Activity



Thresholds: White > 50.0 Yellow > 100.0

Notes

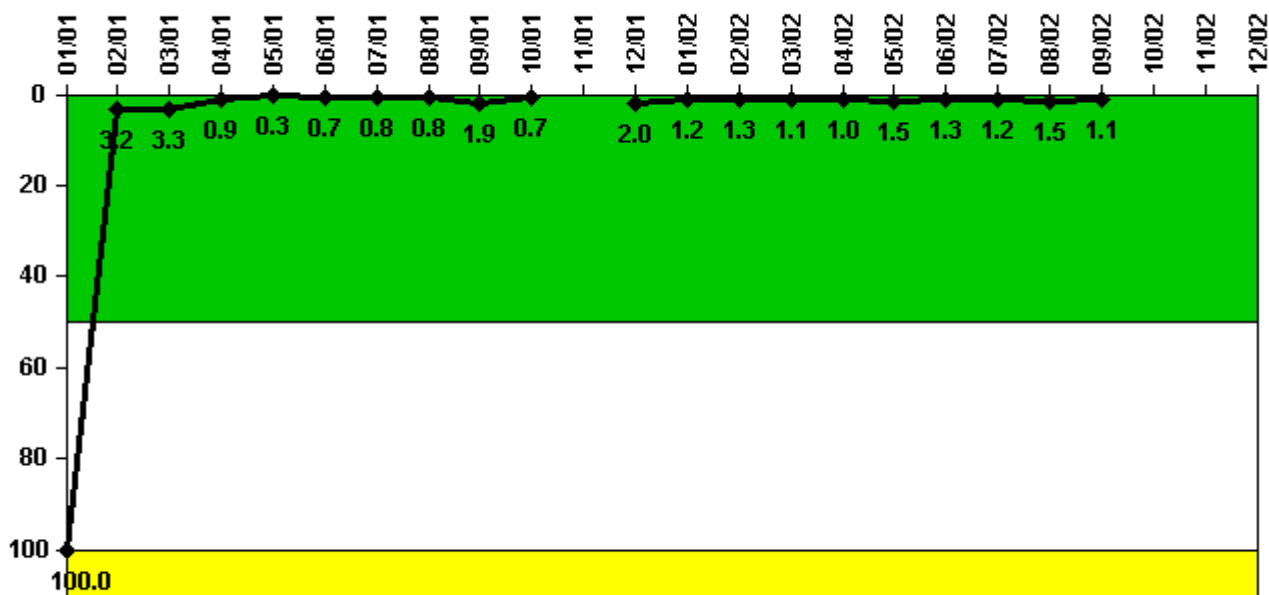
Reactor Coolant System Activity	1/01	2/01	3/01	4/01	5/01	6/01	7/01	8/01	9/01	10/01	11/01	12/01
Maximum activity	0.031600	0.038000	0.031000	0.000703	0.000727	0.000804	0.000956	0.001140	0.001020	0.001190	N/A	0.001120
Technical specification limit	1.0	1.0	1.0	1.0	1.0	1.0	1.0	1.0	1.0	1.0	1.0	1.0
Indicator value	3.2	3.8	3.1	0.1	0.1	0.1	0.1	0.1	0.1	0.1	N/A	0.1

Reactor Coolant System Activity	1/02	2/02	3/02	4/02	5/02	6/02	7/02	8/02	9/02	10/02	11/02	12/02
Maximum activity	0.001140	0.001280	0.001270	0.001470	0.001470	0.001440	0.001510	0.001640	0.001540	N/A	N/A	N/A
Technical specification limit	1.0	1.0	1.0	1.0	1.0	1.0	1.0	1.0	1.0	1.0	1.0	1.0
Indicator value	0.1	0.1	0.1	0.1	0.1	0.1	0.2	0.2	0.2	N/A	N/A	N/A

Licensee Comments:

12/02: 4Q/02 data unavailable due to Unit being defueled / shutdown.

Reactor Coolant System Leakage



Thresholds: White > 50.0 Yellow > 100.0

Notes

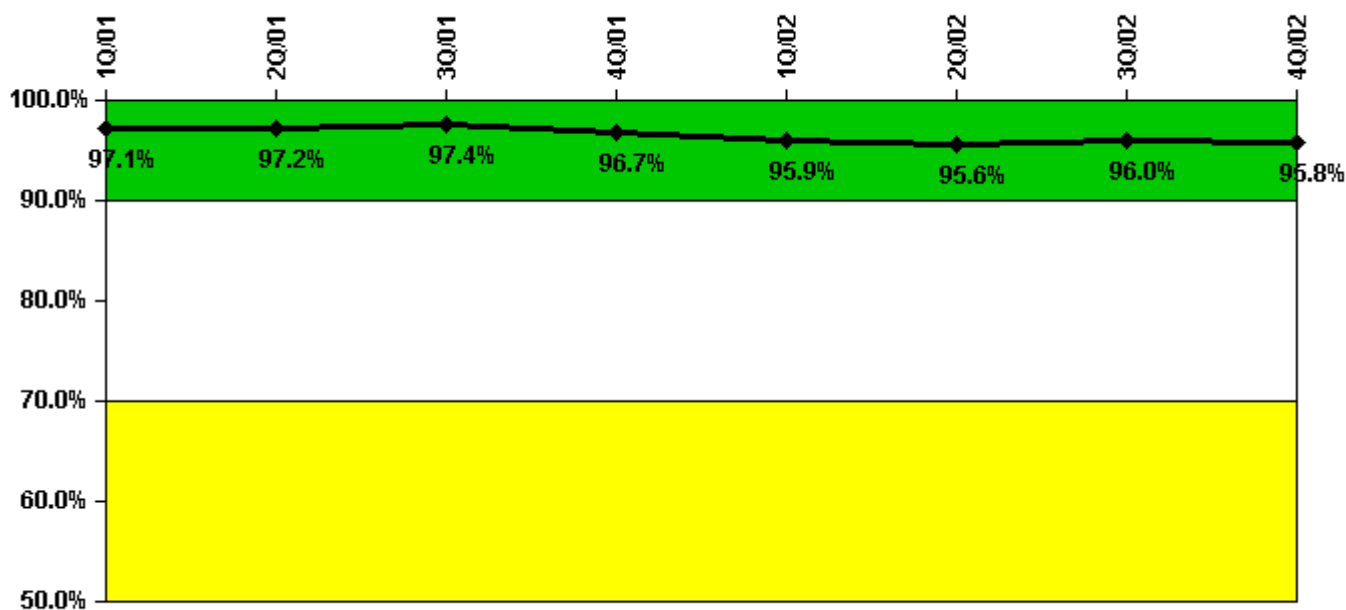
Reactor Coolant System Leakage	1/01	2/01	3/01	4/01	5/01	6/01	7/01	8/01	9/01	10/01	11/01	12/01
Maximum leakage	10.002	0.322	0.330	0.086	0.030	0.072	0.080	0.079	0.185	0.072	N/A	0.198
Technical specification limit	10.0	10.0	10.0	10.0	10.0	10.0	10.0	10.0	10.0	10.0	10.0	10.0
Indicator value	100.0	3.2	3.3	0.9	0.3	0.7	0.8	0.8	1.9	0.7	N/A	2.0

Reactor Coolant System Leakage	1/02	2/02	3/02	4/02	5/02	6/02	7/02	8/02	9/02	10/02	11/02	12/02
Maximum leakage	0.122	0.128	0.105	0.104	0.153	0.126	0.122	0.146	0.110	N/A	N/A	N/A
Technical specification limit	10.0	10.0	10.0	10.0	10.0	10.0	10.0	10.0	10.0	10.0	10.0	10.0
Indicator value	1.2	1.3	1.1	1.0	1.5	1.3	1.2	1.5	1.1	N/A	N/A	N/A

Licensee Comments:

12/02: 4Q/02 data unavailable due to Unit being defueled / shutdown.

Drill/Exercise Performance



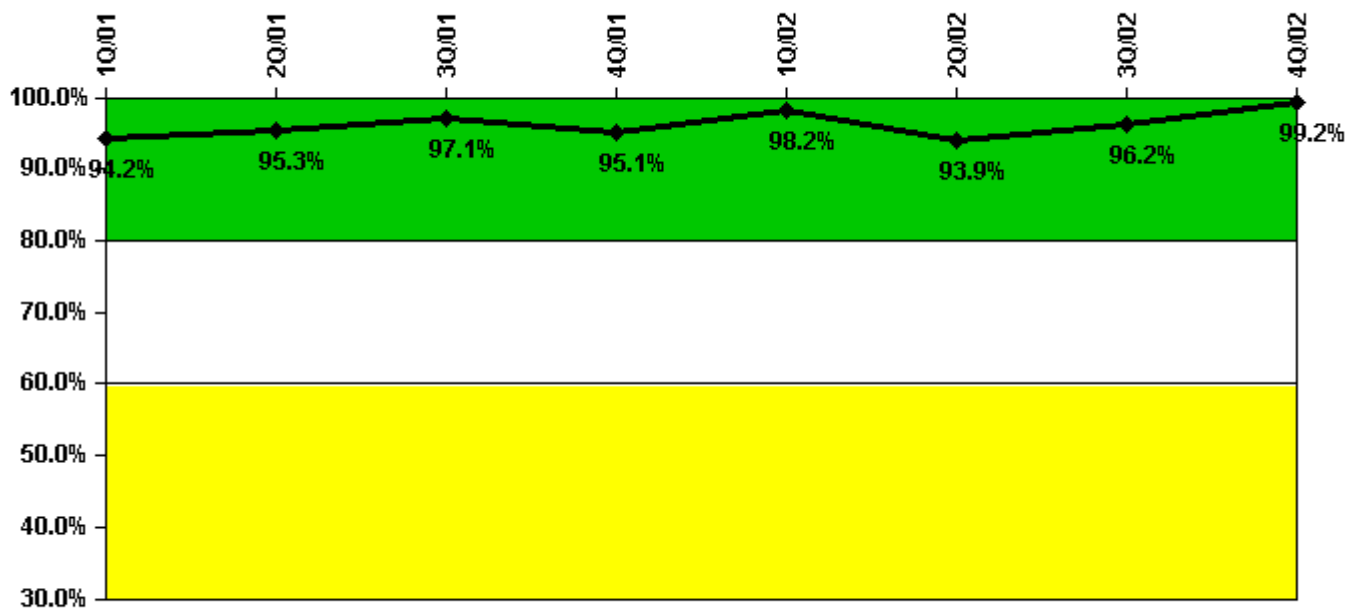
Thresholds: White < 90.0% Yellow < 70.0%

Notes

Drill/Exercise Performance	1Q/01	2Q/01	3Q/01	4Q/01	1Q/02	2Q/02	3Q/02	4Q/02
Successful opportunities	30.0	18.0	16.0	35.0	39.0	14.0	21.0	10.0
Total opportunities	35.0	18.0	16.0	35.0	41.0	15.0	21.0	10.0
Indicator value	97.1%	97.2%	97.4%	96.7%	95.9%	95.6%	96.0%	95.8%

Licensee Comments: none

ERO Drill Participation



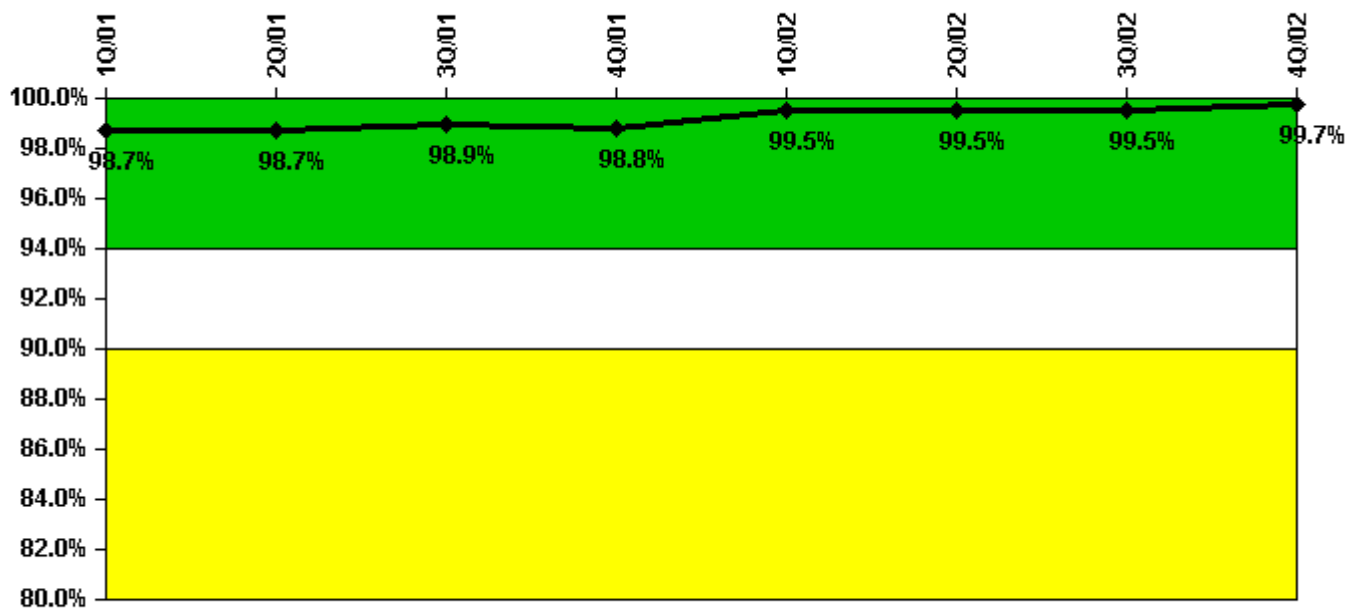
Thresholds: White < 80.0% Yellow < 60.0%

Notes

ERO Drill Participation	1Q/01	2Q/01	3Q/01	4Q/01	1Q/02	2Q/02	3Q/02	4Q/02
Participating Key personnel	98.0	101.0	101.0	98.0	112.0	123.0	127.0	127.0
Total Key personnel	104.0	106.0	104.0	103.0	114.0	131.0	132.0	128.0
Indicator value	94.2%	95.3%	97.1%	95.1%	98.2%	93.9%	96.2%	99.2%

Licensee Comments: none

Alert & Notification System



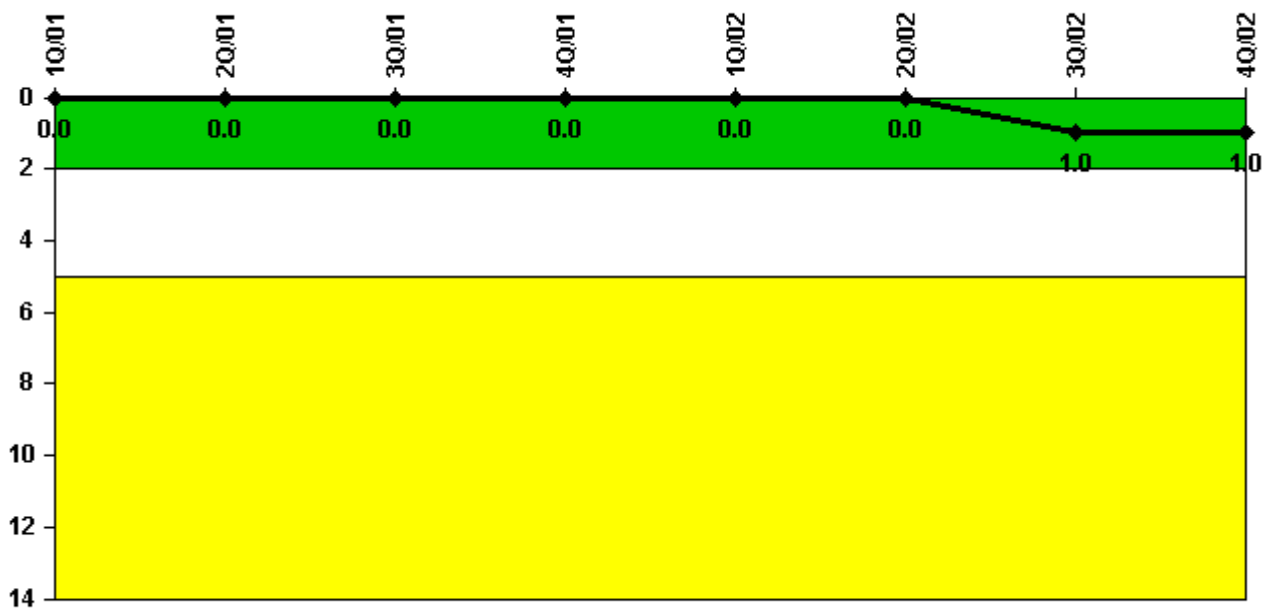
Thresholds: White < 94.0% Yellow < 90.0%

Notes

Alert & Notification System	1Q/01	2Q/01	3Q/01	4Q/01	1Q/02	2Q/02	3Q/02	4Q/02
Successful siren-tests	414	427	431	431	434	432	431	434
Total sirens-tests	427	429	434	434	434	434	434	434
Indicator value	98.7%	98.7%	98.9%	98.8%	99.5%	99.5%	99.5%	99.7%

Licensee Comments: none

Occupational Exposure Control Effectiveness



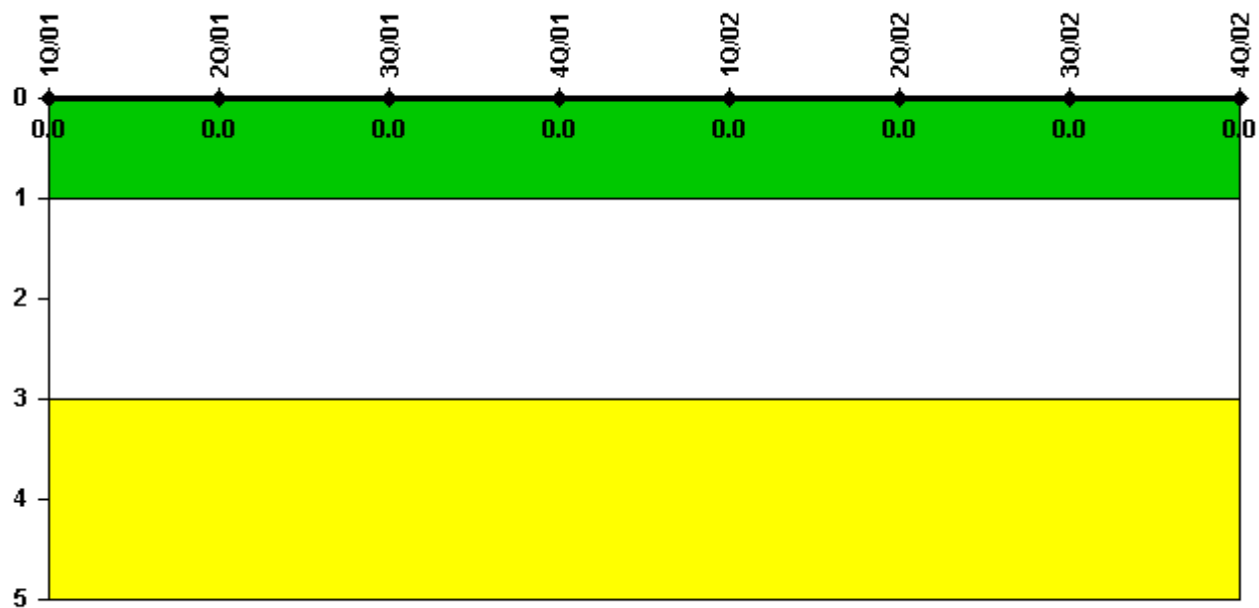
Thresholds: White > 2.0 Yellow > 5.0

Notes

Occupational Exposure Control Effectiveness	1Q/01	2Q/01	3Q/01	4Q/01	1Q/02	2Q/02	3Q/02	4Q/02
High radiation area occurrences	0	0	0	0	0	0	1	0
Very high radiation area occurrences	0	0	0	0	0	0	0	0
Unintended exposure occurrences	0	0	0	0	0	0	0	0
Indicator value	0	0	0	0	0	0	1	1

Licensee Comments: none

RETS/ODCM Radiological Effluent



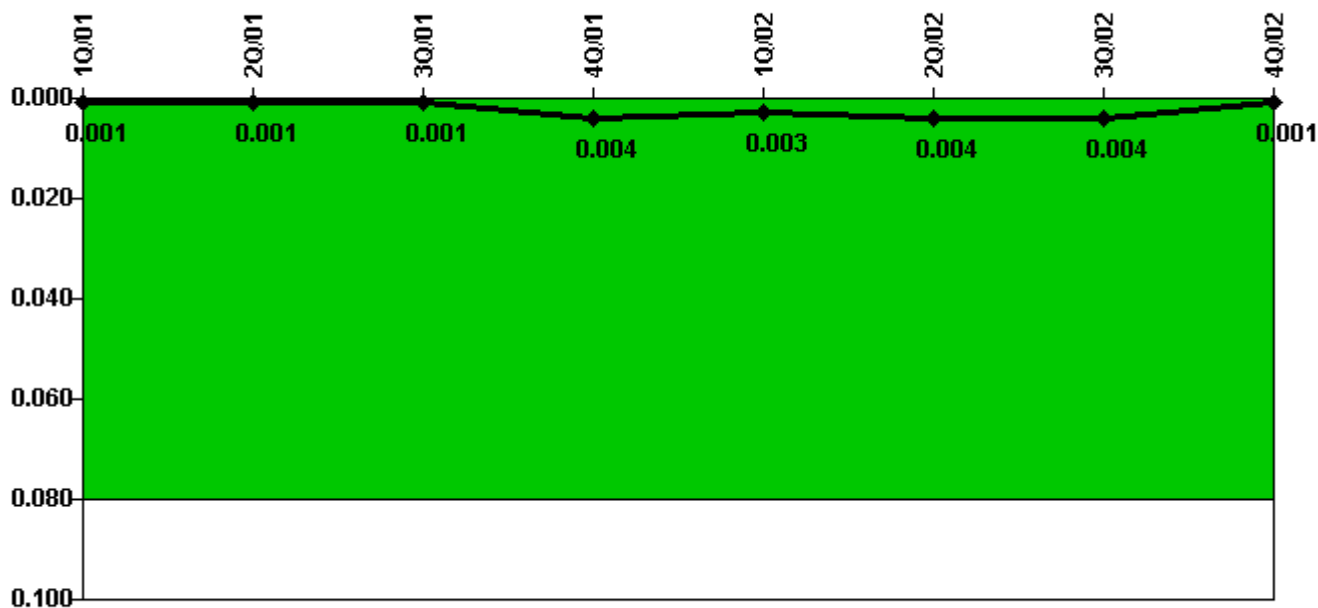
Thresholds: White > 1.0 Yellow > 3.0

Notes

RETS/ODCM Radiological Effluent	1Q/01	2Q/01	3Q/01	4Q/01	1Q/02	2Q/02	3Q/02	4Q/02
RETS/ODCM occurrences	0	0	0	0	0	0	0	0
Indicator value	0	0	0	0	0	0	0	0

Licensee Comments: none

Protected Area Security Performance Index



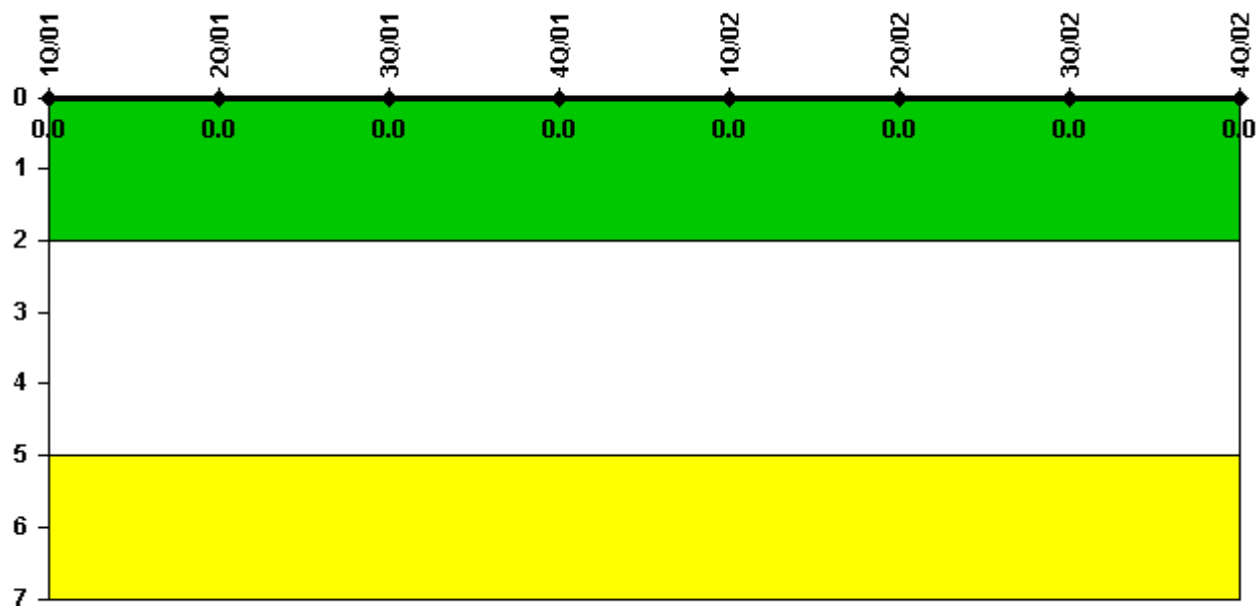
Thresholds: White > 0.080

Notes

Protected Area Security Performance Index	1Q/01	2Q/01	3Q/01	4Q/01	1Q/02	2Q/02	3Q/02	4Q/02
IDS compensatory hours	6.10	0	5.20	53.40	0	4.90	1.90	2.50
CCTV compensatory hours	0	0	0	0	0	0	10.2	0
IDS normalization factor	1.00	1.00	1.00	1.00	1.00	1.00	1.00	1.00
CCTV normalization factor	1.0	1.0	1.0	1.0	1.0	1.0	1.0	1.0
Index Value	0.001	0.001	0.001	0.004	0.003	0.004	0.004	0.001

Licensee Comments: none

Personnel Screening Program



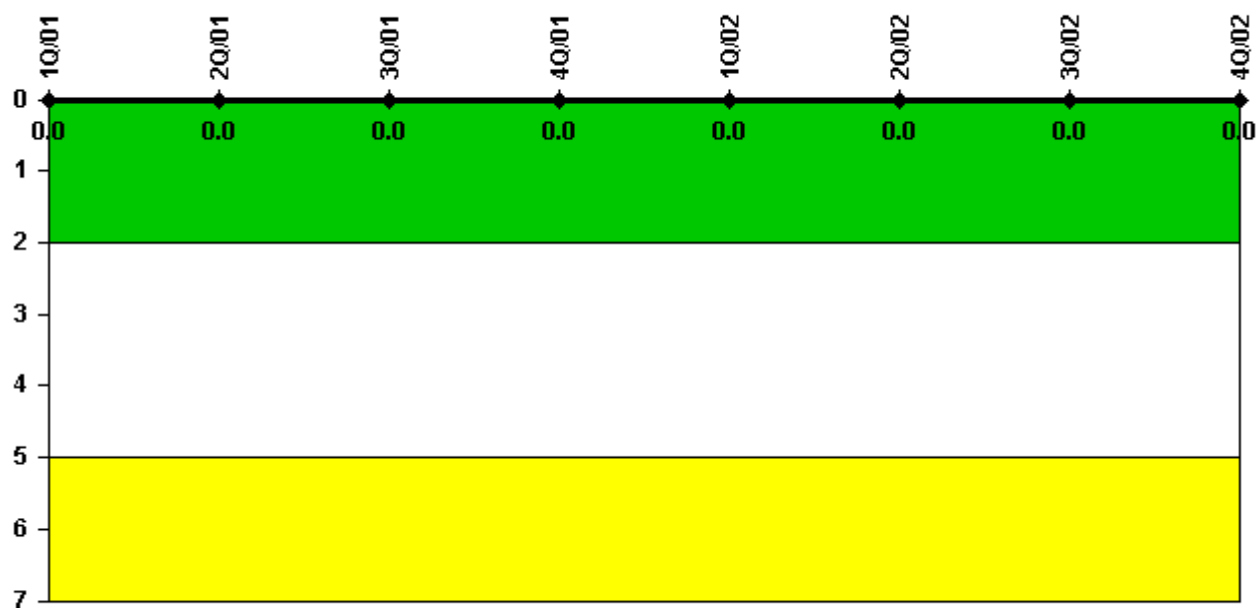
Thresholds: White > 2.0 Yellow > 5.0

Notes

Personnel Screening Program	1Q/01	2Q/01	3Q/01	4Q/01	1Q/02	2Q/02	3Q/02	4Q/02
Program failures	0	0	0	0	0	0	0	0
Indicator value	0	0	0	0	0	0	0	0

Licensee Comments: none

FFD/Personnel Reliability



Thresholds: White > 2.0 Yellow > 5.0

Notes

FFD/Personnel Reliability	1Q/01	2Q/01	3Q/01	4Q/01	1Q/02	2Q/02	3Q/02	4Q/02
Program Failures	0	0	0	0	0	0	0	0
Indicator value	0	0	0	0	0	0	0	0

Licensee Comments: none

▲ [PI Summary](#) | [Inspection Findings Summary](#) | [Reactor Oversight Process](#)

Last Modified: January 30, 2003