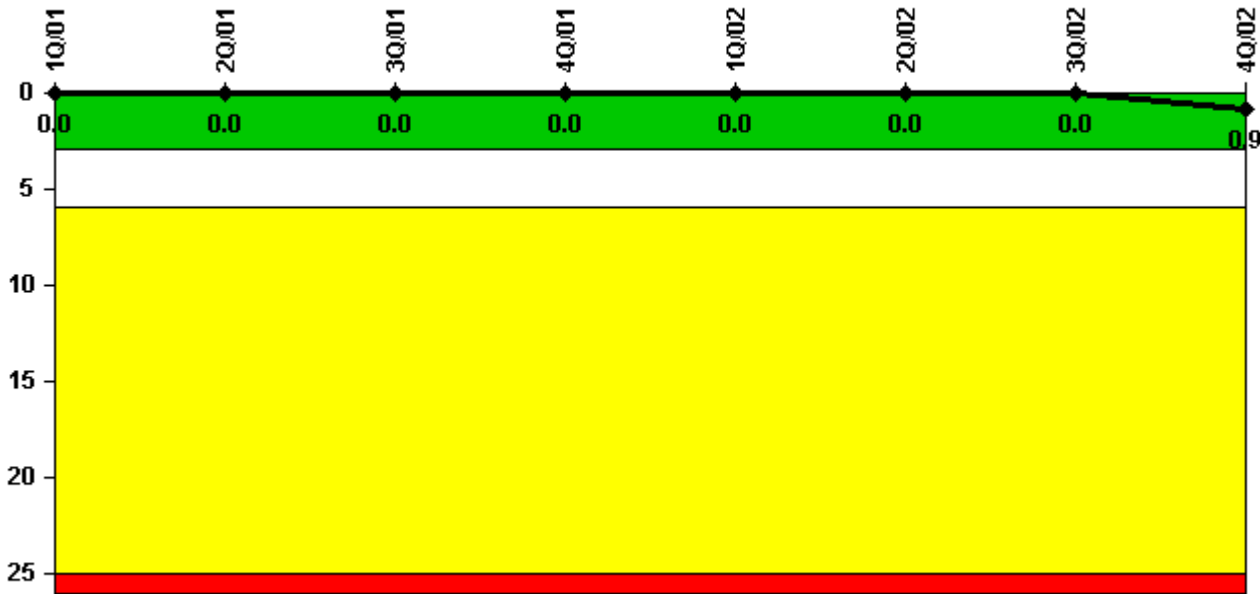


Millstone 3

4Q/2002 Performance Indicators

Licensee's General Comments: Inadvertently failed to input the Tech Spec Limit.

Unplanned Scrams per 7000 Critical Hrs



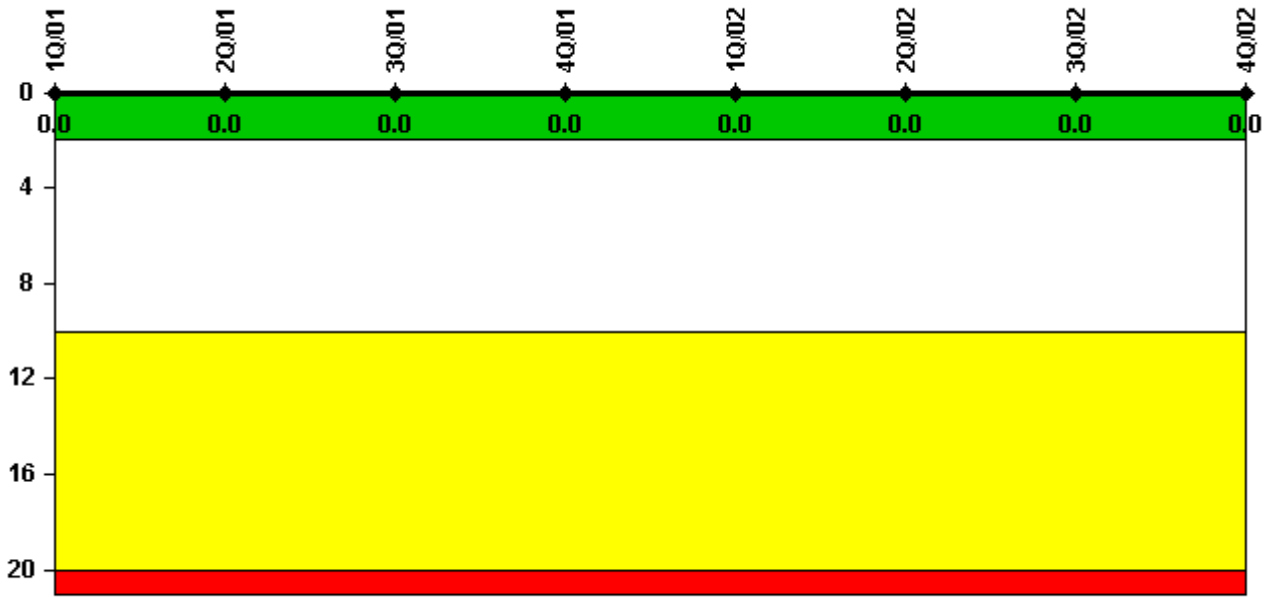
Thresholds: White > 3.0 Yellow > 6.0 Red > 25.0

Notes

Unplanned Scrams per 7000 Critical Hrs	1Q/01	2Q/01	3Q/01	4Q/01	1Q/02	2Q/02	3Q/02	4Q/02
Unplanned scrams	0	0	0	0	0	0	0	1.0
Critical hours	866.1	2183.0	2208.0	2209.0	2160.0	2183.0	1637.9	1964.7
Indicator value	0	0	0	0	0	0	0	0.9

Licensee Comments: none

Scrams with Loss of Normal Heat Removal



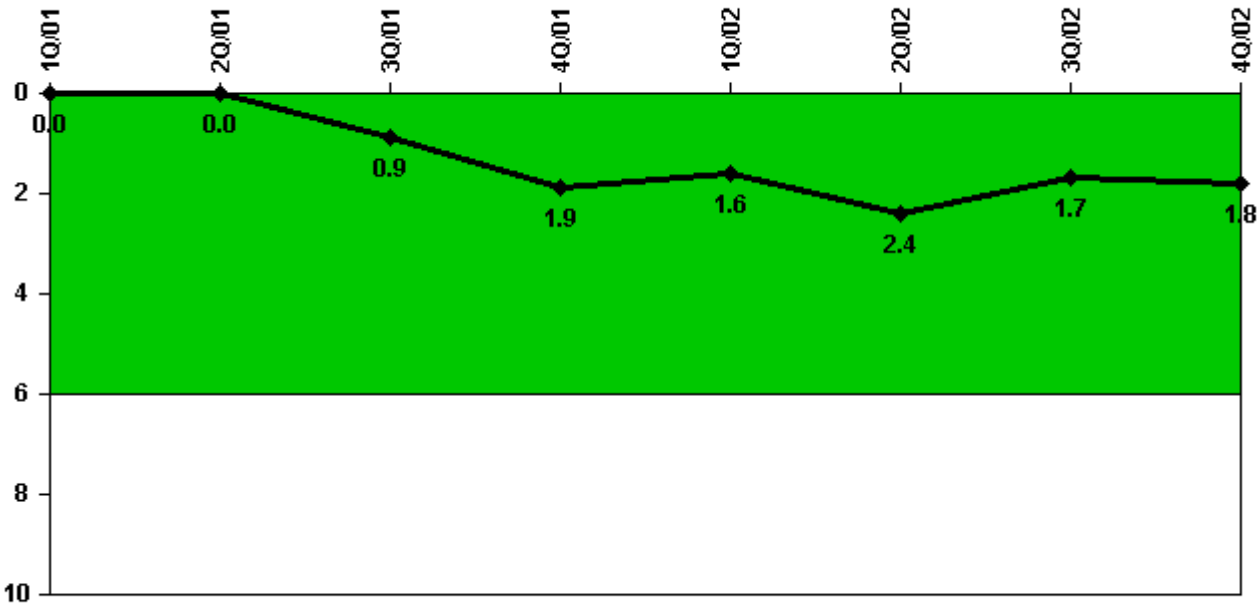
Thresholds: White > 2.0 Yellow > 10.0 Red > 20.0

Notes

Scrams with Loss of Normal Heat Removal	1Q/01	2Q/01	3Q/01	4Q/01	1Q/02	2Q/02	3Q/02	4Q/02
Scrams	0	0	0	0	0	0	0	0
Indicator value	0	0	0	0	0	0	0	0

Licensee Comments: none

Unplanned Power Changes per 7000 Critical Hrs



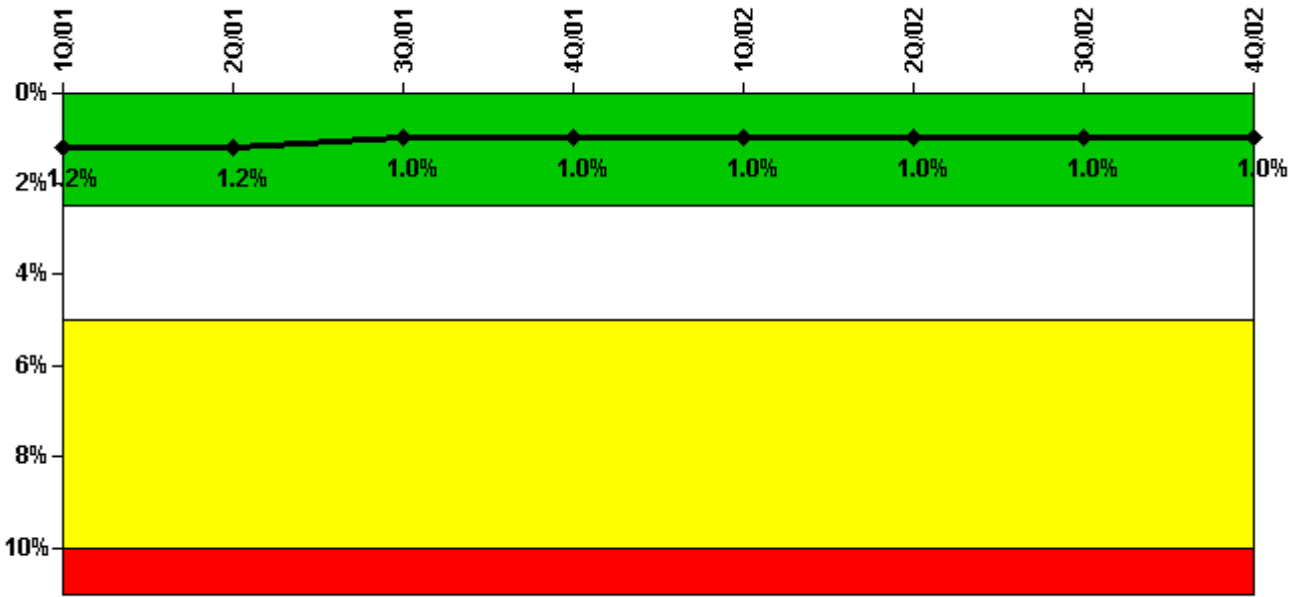
Thresholds: White > 6.0

Notes

Unplanned Power Changes per 7000 Critical Hrs	1Q/01	2Q/01	3Q/01	4Q/01	1Q/02	2Q/02	3Q/02	4Q/02
Unplanned power changes	0	0	1.0	1.0	0	1.0	0	1.0
Critical hours	866.1	2183.0	2208.0	2209.0	2160.0	2183.0	1637.9	1964.7
Indicator value	0	0	0.9	1.9	1.6	2.4	1.7	1.8

Licensee Comments: none

Safety System Unavailability, Emergency AC Power



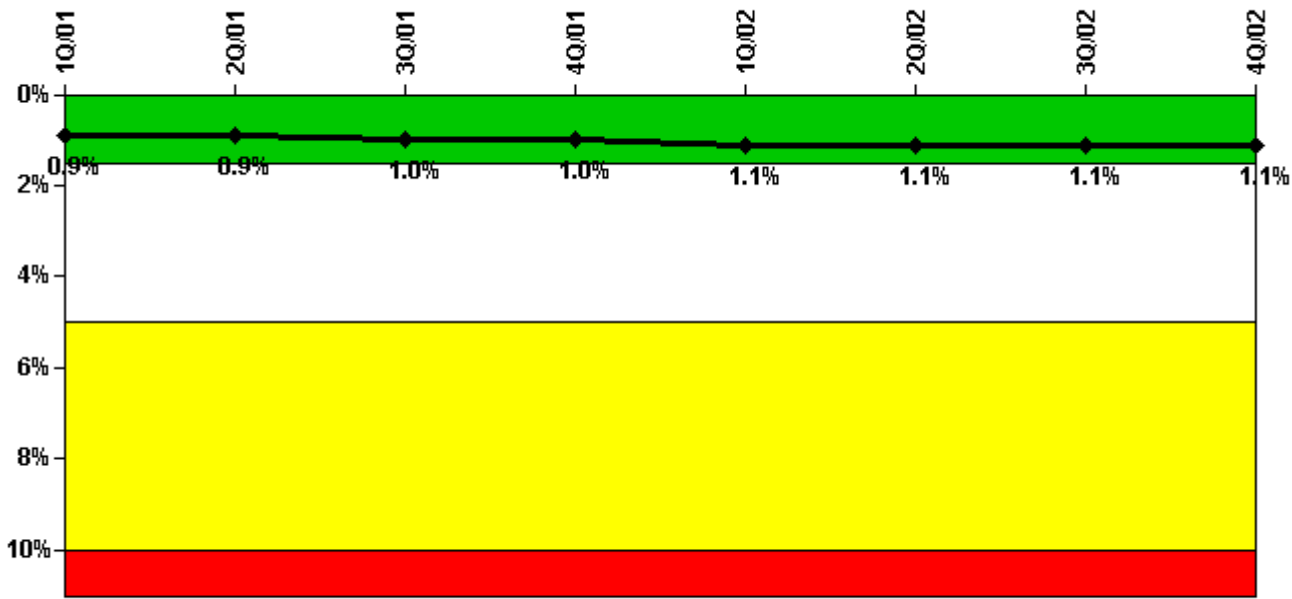
Thresholds: White > 2.5% Yellow > 5.0% Red > 10.0%

Notes

Safety System Unavailability, Emergency AC Power	1Q/01	2Q/01	3Q/01	4Q/01	1Q/02	2Q/02	3Q/02	4Q/02
Train 1								
Planned unavailable hours	5.90	26.64	10.80	10.79	8.62	13.78	13.95	18.43
Unplanned unavailable hours	0	0	0	0	0	0	0	12.20
Fault exposure hours	0	0	0	0	0	0	0	0
Effective Reset hours	0	0	0	0	0	0	0	0
Required hours	2160.00	2183.00	2208.00	2209.00	2160.00	2183.00	1758.85	2209.00
Train 2								
Planned unavailable hours	16.08	16.33	18.58	15.58	12.68	13.83	16.48	20.13
Unplanned unavailable hours	0	0	0	30.06	11.03	0	0	0
Fault exposure hours	0	0	0	0	0	0	0	0
Effective Reset hours	0	0	0	0	0	0	0	0
Required hours	2160.00	2183.00	2208.00	2209.00	2160.00	2183.00	1937.15	2209.00
Indicator value	1.2%	1.2%	1.0%	1.0%	1.0%	1.0%	1.0%	1.0%

Licensee Comments: none

Safety System Unavailability, High Pressure Injection System (HPSI)



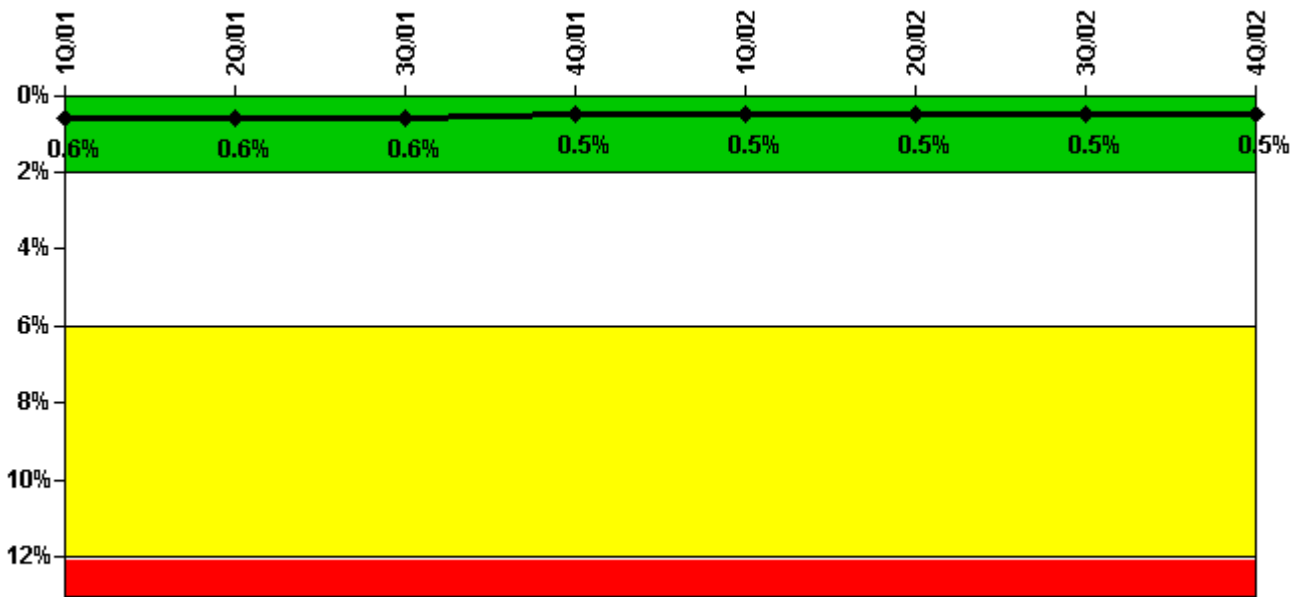
Thresholds: White > 1.5% Yellow > 5.0% Red > 10.0%

Notes

Safety System Unavailability, High Pressure Injection System (HPSI)	1Q/01	2Q/01	3Q/01	4Q/01	1Q/02	2Q/02	3Q/02	4Q/02
Train 1								
Planned unavailable hours	9.24	24.80	19.21	16.95	18.01	29.99	3.03	26.02
Unplanned unavailable hours	0	0	0	0	0	0	0.03	0
Fault exposure hours	0	0	0	0	0	0	0	0
Effective Reset hours	0	0	0	0	0	0	0	0
Required hours	1121.14	2183.00	2208.00	2209.00	2160.00	2183.00	1651.73	2181.17
Train 2								
Planned unavailable hours	13.98	15.35	45.45	16.98	15.11	23.97	21.95	16.77
Unplanned unavailable hours	0	0	0	0	21.85	0	7.30	0
Fault exposure hours	0	0	0	0	0	0	0	0
Effective Reset hours	0	0	0	0	0	0	0	0
Required hours	1121.14	2183.00	2208.00	2209.00	2160.00	2183.00	1651.73	2181.17
Train 3								
Planned unavailable hours	17.45	39.91	38.54	19.27	7.30	8.45	10.60	23.31
Unplanned unavailable hours	0	22.10	0	69.45	0	0	0	0
Fault exposure hours	0	0	0	0	0	0	0	0
Effective Reset hours	0	0	0	0	0	0	0	0
Required hours	1182.70	2183.00	2208.00	2209.00	2160.00	2183.00	1651.73	2181.17
Train 4								
Planned unavailable hours	4.39	42.13	22.87	12.95	13.05	8.97	11.87	3.97
Unplanned unavailable hours	0	0	0	0	23.87	0	0	0
Fault exposure hours	0	0	0	0	0	0	0	0
Effective Reset hours	0	0	0	0	0	0	0	0
Required hours	1182.70	2183.00	2208.00	2209.00	2160.00	2183.00	1651.73	2181.17
Indicator value	0.9%	0.9%	1.0%	1.0%	1.1%	1.1%	1.1%	1.1%

Licensee Comments: none

Safety System Unavailability, Heat Removal System (AFW)



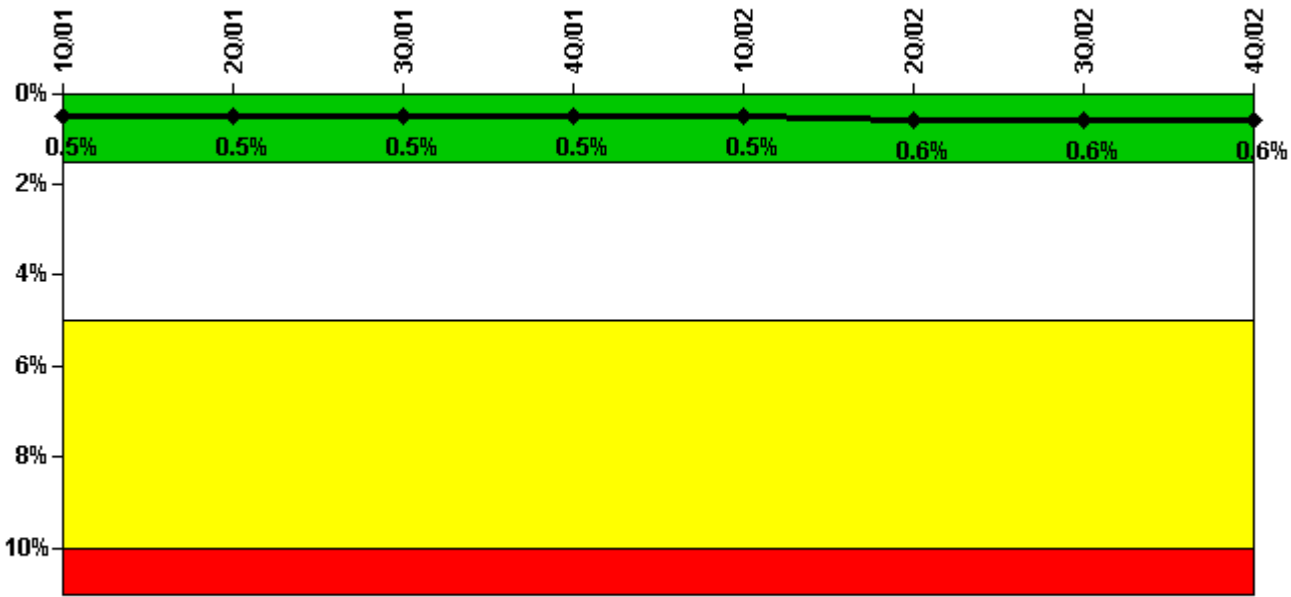
Thresholds: White > 2.0% Yellow > 6.0% Red > 12.0%

Notes

Safety System Unavailability, Heat Removal System (AFW)	1Q/01	2Q/01	3Q/01	4Q/01	1Q/02	2Q/02	3Q/02	4Q/02
Train 1								
Planned unavailable hours	1.90	2.08	13.48	7.87	5.98	13.11	3.62	18.07
Unplanned unavailable hours	0	0	0	0	0	0	0	0
Fault exposure hours	0	0	0	0	0	0	0	0
Effective Reset hours	0	0	0	0	0	0	0	0
Required hours	1112.07	2183.00	2208.00	2209.00	2160.00	2183.00	1636.00	2173.17
Train 2								
Planned unavailable hours	6.10	3.85	13.74	10.84	2.87	2.44	2.20	11.53
Unplanned unavailable hours	0	0	0	0	0	0	0	0
Fault exposure hours	0	0	0	0	0	0	0	0
Effective Reset hours	0	0	0	0	0	0	0	0
Required hours	1112.07	2183.00	2208.00	2209.00	2160.00	2183.00	1636.00	2173.17
Train 3								
Planned unavailable hours	34.79	20.27	14.75	4.56	12.00	10.93	13.87	3.54
Unplanned unavailable hours	0	0	0	0	0	0	0	1.85
Fault exposure hours	0	0	0	0	0	0	0	0
Effective Reset hours	0	0	0	0	0	0	0	0
Required hours	1112.07	2183.00	2208.00	2209.00	2160.00	2183.00	1636.00	2173.17
Indicator value	0.6%	0.6%	0.6%	0.5%	0.5%	0.5%	0.5%	0.5%

Licensee Comments: none

Safety System Unavailability, Residual Heat Removal System



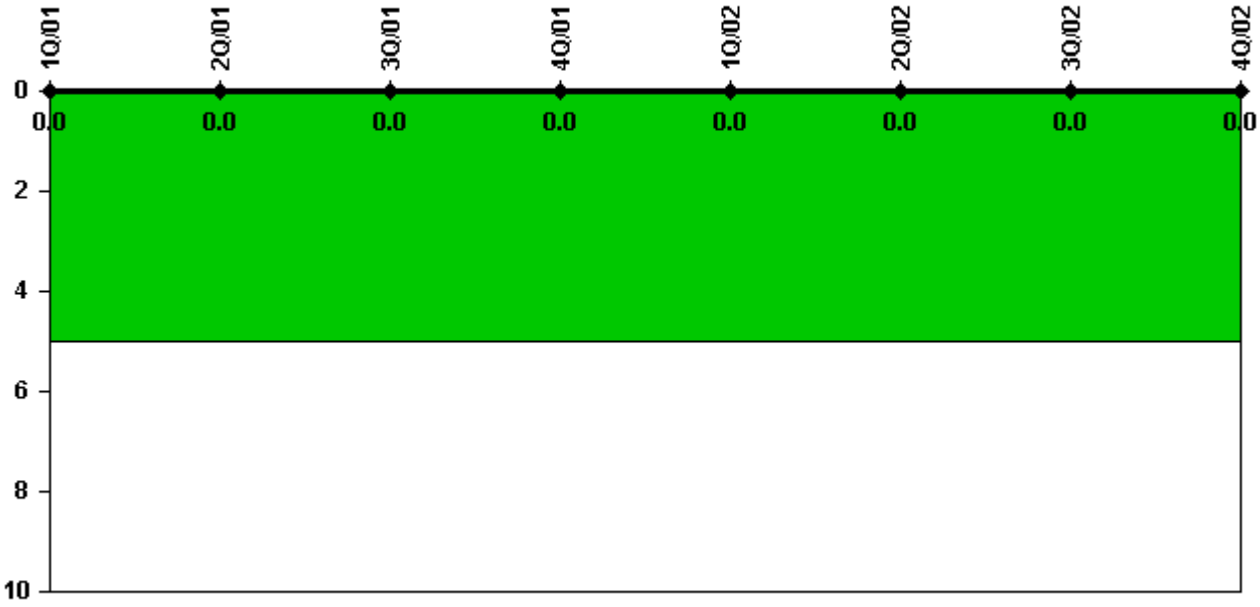
Thresholds: White > 1.5% Yellow > 5.0% Red > 10.0%

Notes

Safety System Unavailability, Residual Heat Removal System	1Q/01	2Q/01	3Q/01	4Q/01	1Q/02	2Q/02	3Q/02	4Q/02
Train 1								
Planned unavailable hours	0	0	0	0	0	0	0	0
Unplanned unavailable hours	0	0	0	0	0	0	0	0
Fault exposure hours	0	0	0	0	0	0	0	0
Effective Reset hours	0	0	0	0	0	0	0	0
Required hours	1043.50	0	0	0	0	0	473.71	0
Train 2								
Planned unavailable hours	0	0	0	0	0	0	0	0
Unplanned unavailable hours	0	0	0	0	0	0	0	0
Fault exposure hours	0	0	0	0	0	0	0	0
Effective Reset hours	0	0	0	0	0	0	0	0
Required hours	1043.50	0	0	0	0	0	473.71	0
Train 3								
Planned unavailable hours	1.20	30.00	10.90	9.63	14.28	5.63	12.75	7.02
Unplanned unavailable hours	0	0	0	0	0	0	0	0
Fault exposure hours	0	0	0	0	0	0	0	0
Effective Reset hours	0	0	0	0	0	0	0	0
Required hours	1182.70	2183.00	2208.00	2209.00	2160.00	2183.00	1660.11	2181.17
Train 4								
Planned unavailable hours	8.14	6.84	19.03	19.01	5.52	27.95	20.93	23.29
Unplanned unavailable hours	0	0	0	0	21.85	0	0	37.17
Fault exposure hours	0	0	0	0	0	0	0	0
Effective Reset hours	0	0	0	0	0	0	0	0
Required hours	1182.70	2183.00	2208.00	2209.00	2160.00	2183.00	1660.11	2181.17
Indicator value	0.5%	0.5%	0.5%	0.5%	0.5%	0.6%	0.6%	0.6%

Licensee Comments: none

Safety System Functional Failures (PWR)



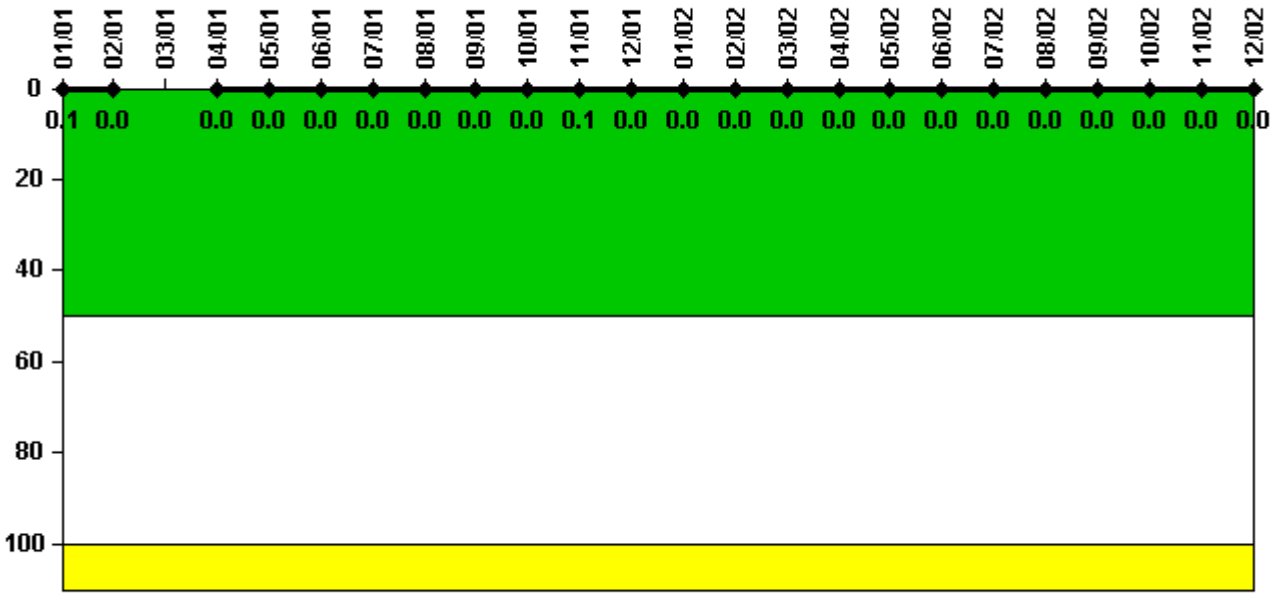
Thresholds: White > 5.0

Notes

Safety System Functional Failures (PWR)	1Q/01	2Q/01	3Q/01	4Q/01	1Q/02	2Q/02	3Q/02	4Q/02
Safety System Functional Failures	0	0	0	0	0	0	0	0
Indicator value	0	0	0	0	0	0	0	0

Licensee Comments: none

Reactor Coolant System Activity



Thresholds: White > 50.0 Yellow > 100.0

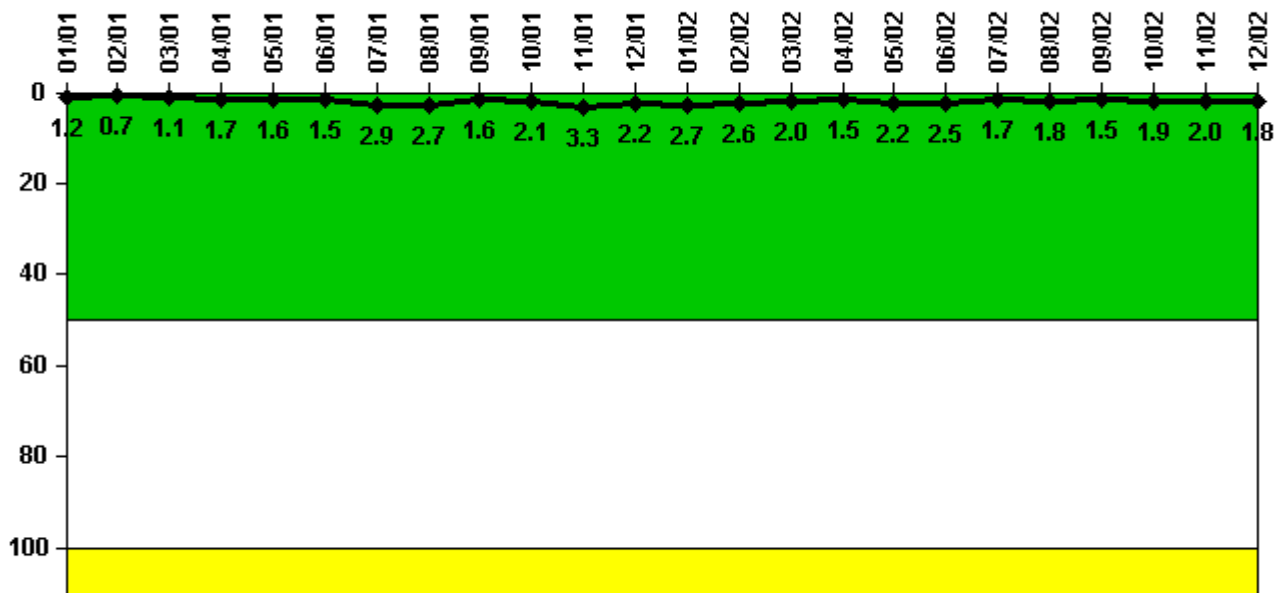
Notes

Reactor Coolant System Activity	1/01	2/01	3/01	4/01	5/01	6/01	7/01	8/01	9/01	10/01	11/01	12/01
Maximum activity	0.000541	0.000441	N/A	0.000209	0.000279	0.000231	0.000250	0.000250	0.000262	0.000282	0.000795	0.000303
Technical specification limit	1.0	1.0	1.0	1.0	1.0	1.0	1.0	1.0	1.0	1.0	1.0	1.0
Indicator value	0.1	0	N/A	0	0	0	0	0	0	0	0.1	0

Reactor Coolant System Activity	1/02	2/02	3/02	4/02	5/02	6/02	7/02	8/02	9/02	10/02	11/02	12/02
Maximum activity	0.000307	0.000305	0.000334	0.000322	0.000365	0.000371	0.000369	0.000387	0.000324	0.000150	0.000192	0.000174
Technical specification limit	1.0	1.0	1.0	1.0	1.0	1.0	1.0	1.0	1.0	1.0	1.0	1.0
Indicator value	0	0	0	0	0	0	0	0	0	0	0	0

Licensee Comments: none

Reactor Coolant System Leakage



Thresholds: White > 50.0 Yellow > 100.0

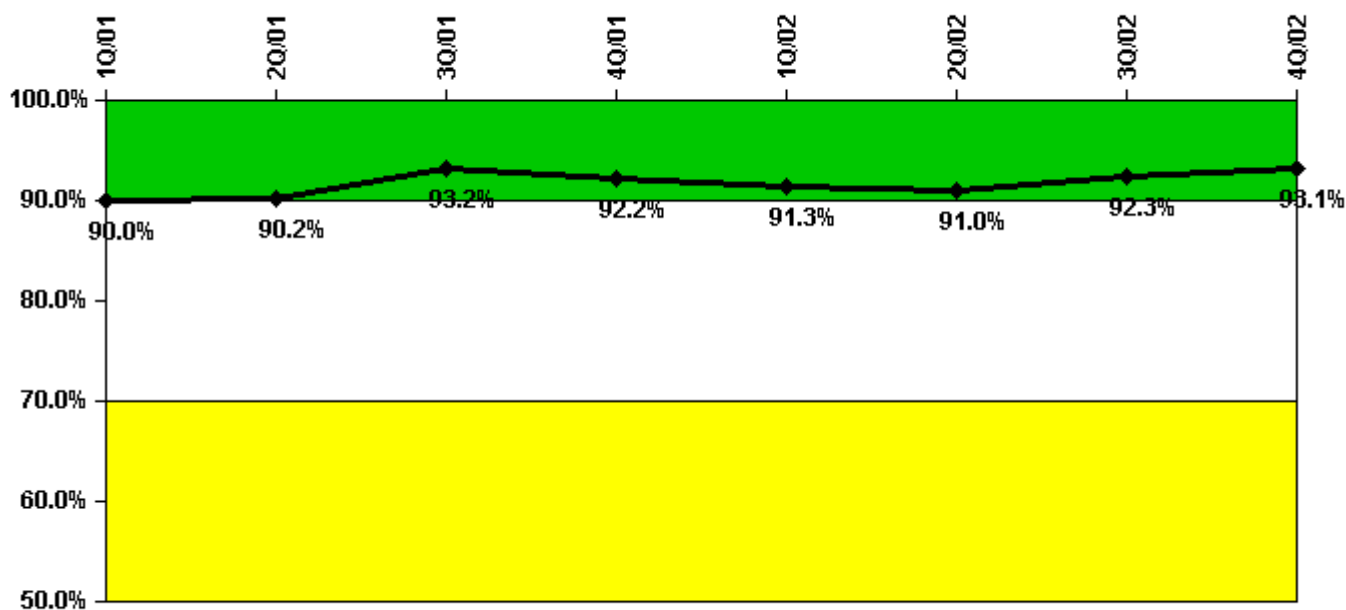
Notes

Reactor Coolant System Leakage	1/01	2/01	3/01	4/01	5/01	6/01	7/01	8/01	9/01	10/01	11/01	12/01
Maximum leakage	0.119	0.069	0.106	0.173	0.161	0.146	0.285	0.268	0.157	0.208	0.325	0.218
Technical specification limit	10.0	10.0	10.0	10.0	10.0	10.0	10.0	10.0	10.0	10.0	10.0	10.0
Indicator value	1.2	0.7	1.1	1.7	1.6	1.5	2.9	2.7	1.6	2.1	3.3	2.2

Reactor Coolant System Leakage	1/02	2/02	3/02	4/02	5/02	6/02	7/02	8/02	9/02	10/02	11/02	12/02
Maximum leakage	0.265	0.264	0.198	0.147	0.220	0.246	0.170	0.184	0.153	0.193	0.197	0.184
Technical specification limit	10.0	10.0	10.0	10.0	10.0	10.0	10.0	10.0	10.0	10.0	10.0	10.0
Indicator value	2.7	2.6	2.0	1.5	2.2	2.5	1.7	1.8	1.5	1.9	2.0	1.8

Licensee Comments: none

Drill/Exercise Performance



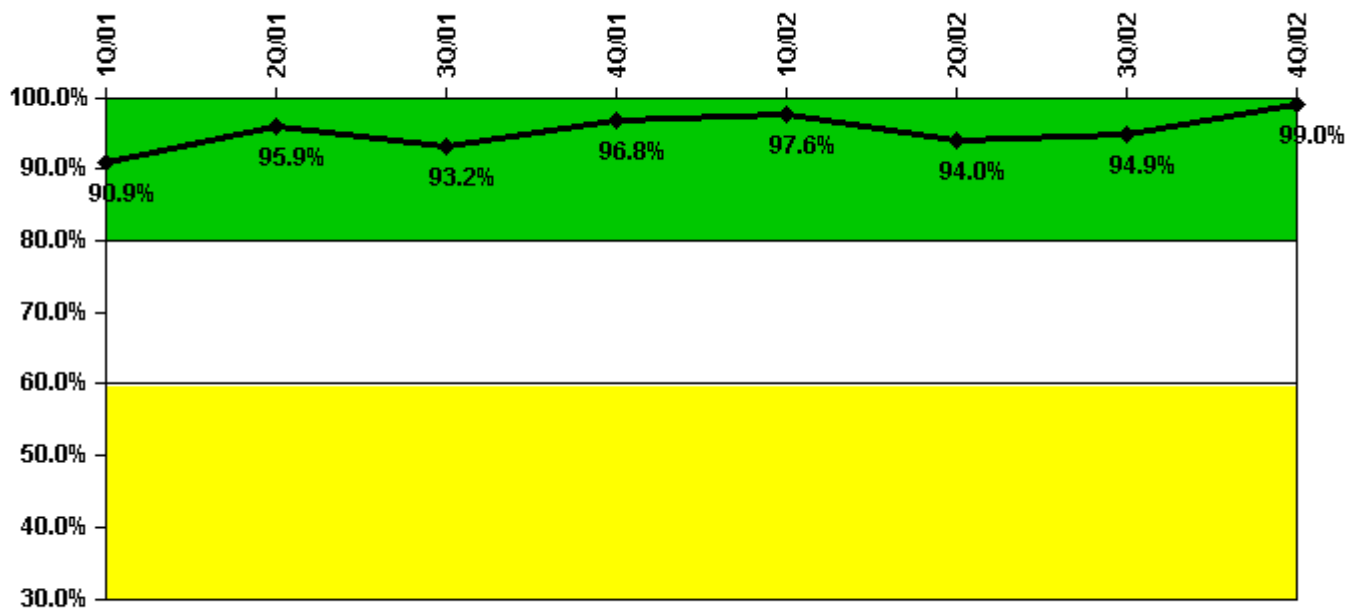
Thresholds: White < 90.0% Yellow < 70.0%

Notes

Drill/Exercise Performance	1Q/01	2Q/01	3Q/01	4Q/01	1Q/02	2Q/02	3Q/02	4Q/02
Successful opportunities	0	41.0	18.0	31.0	0	30.0	36.0	45.0
Total opportunities	0	45.0	19.0	36.0	0	32.0	37.0	47.0
Indicator value	90.0%	90.2%	93.2%	92.2%	91.3%	91.0%	92.3%	93.1%

Licensee Comments: none

ERO Drill Participation



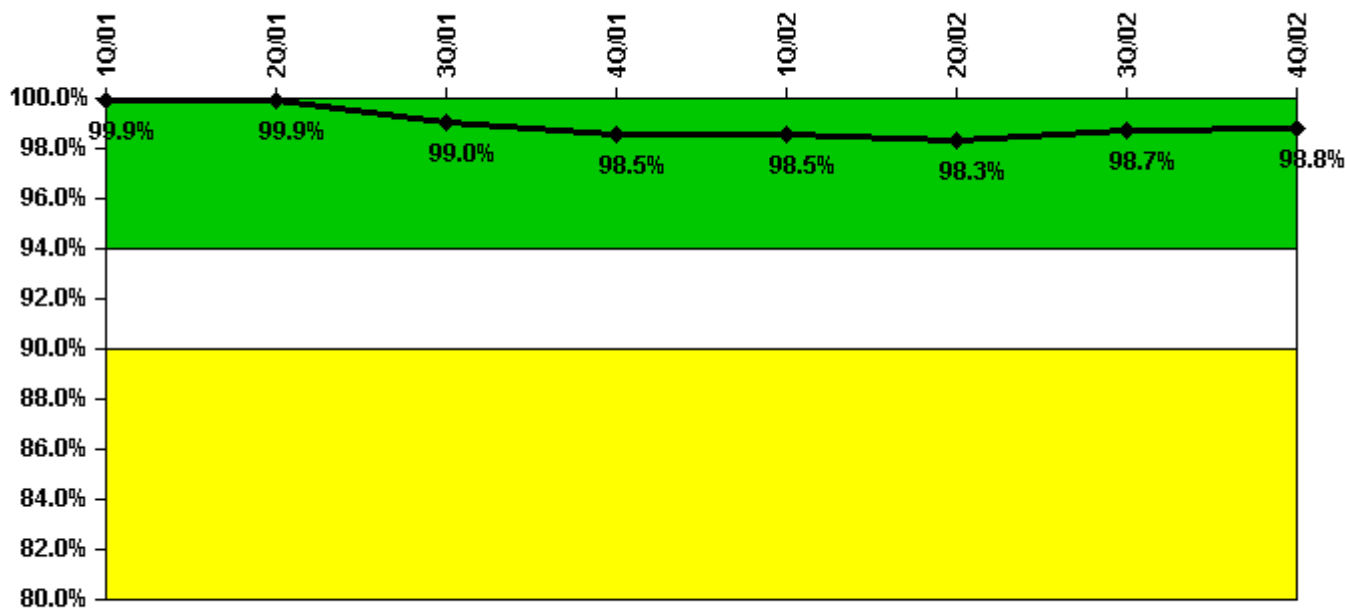
Thresholds: White < 80.0% Yellow < 60.0%

Notes

ERO Drill Participation	1Q/01	2Q/01	3Q/01	4Q/01	1Q/02	2Q/02	3Q/02	4Q/02
Participating Key personnel	60.0	71.0	68.0	92.0	83.0	79.0	93.0	100.0
Total Key personnel	66.0	74.0	73.0	95.0	85.0	84.0	98.0	101.0
Indicator value	90.9%	95.9%	93.2%	96.8%	97.6%	94.0%	94.9%	99.0%

Licensee Comments: none

Alert & Notification System



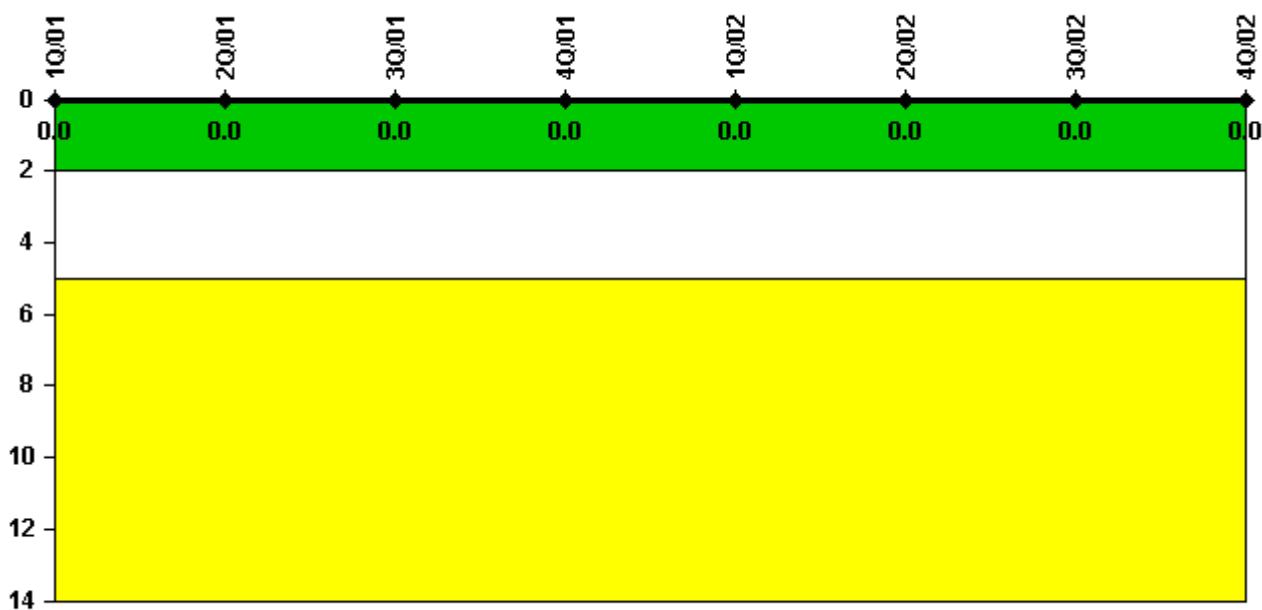
Thresholds: White < 94.0% Yellow < 90.0%

Notes

Alert & Notification System	1Q/01	2Q/01	3Q/01	4Q/01	1Q/02	2Q/02	3Q/02	4Q/02
Successful siren-tests	314	316	463	313	316	314	470	314
Total sirens-tests	316	316	477	318	318	318	477	318
Indicator value	99.9%	99.9%	99.0%	98.5%	98.5%	98.3%	98.7%	98.8%

Licensee Comments: none

Occupational Exposure Control Effectiveness



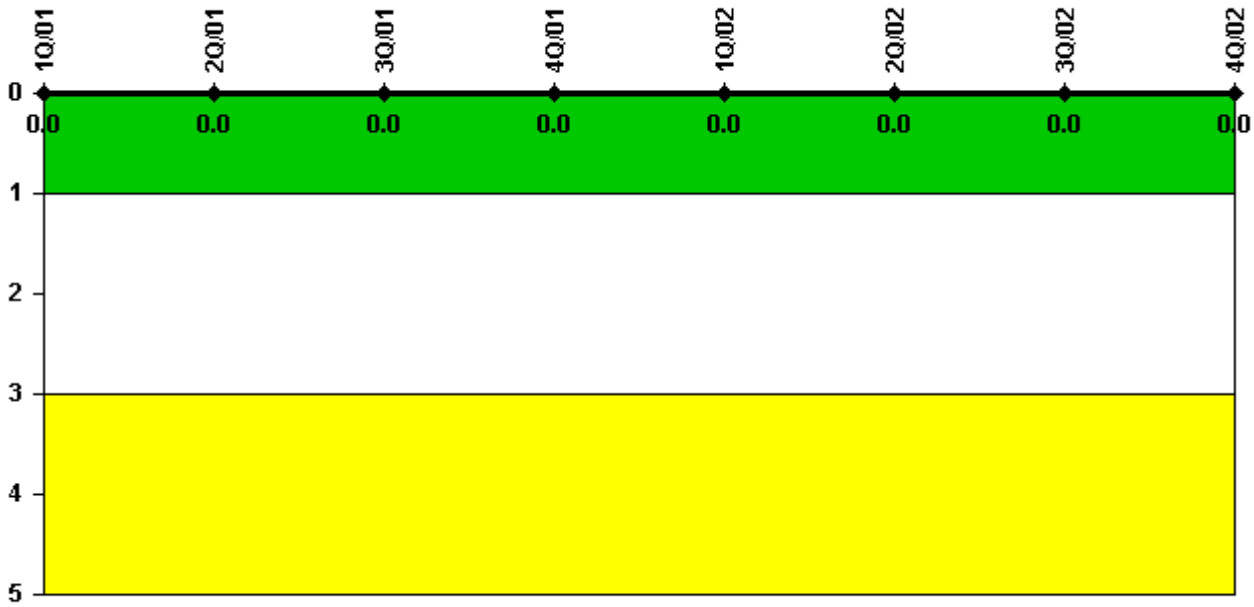
Thresholds: White > 2.0 Yellow > 5.0

Notes

Occupational Exposure Control Effectiveness	1Q/01	2Q/01	3Q/01	4Q/01	1Q/02	2Q/02	3Q/02	4Q/02
High radiation area occurrences	0	0	0	0	0	0	0	0
Very high radiation area occurrences	0	0	0	0	0	0	0	0
Unintended exposure occurrences	0	0	0	0	0	0	0	0
Indicator value	0	0	0	0	0	0	0	0

Licensee Comments: none

RETS/ODCM Radiological Effluent



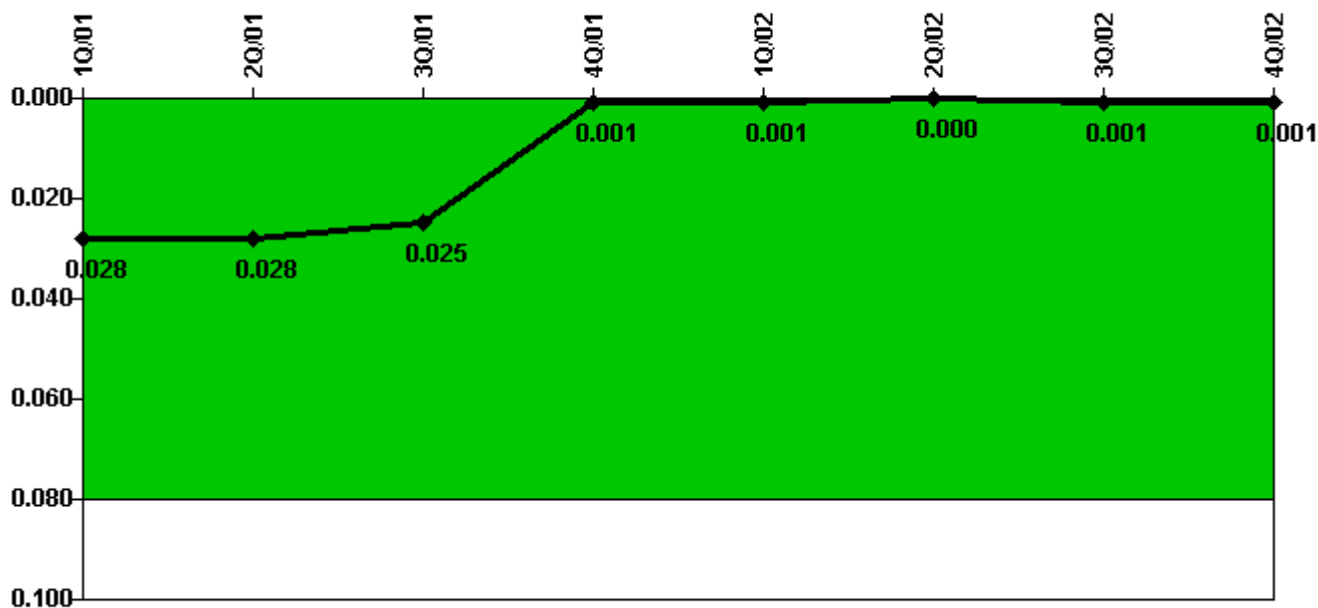
Thresholds: White > 1.0 Yellow > 3.0

Notes

RETS/ODCM Radiological Effluent	1Q/01	2Q/01	3Q/01	4Q/01	1Q/02	2Q/02	3Q/02	4Q/02
RETS/ODCM occurrences	0	0	0	0	0	0	0	0
Indicator value	0	0	0	0	0	0	0	0

Licensee Comments: none

Protected Area Security Performance Index



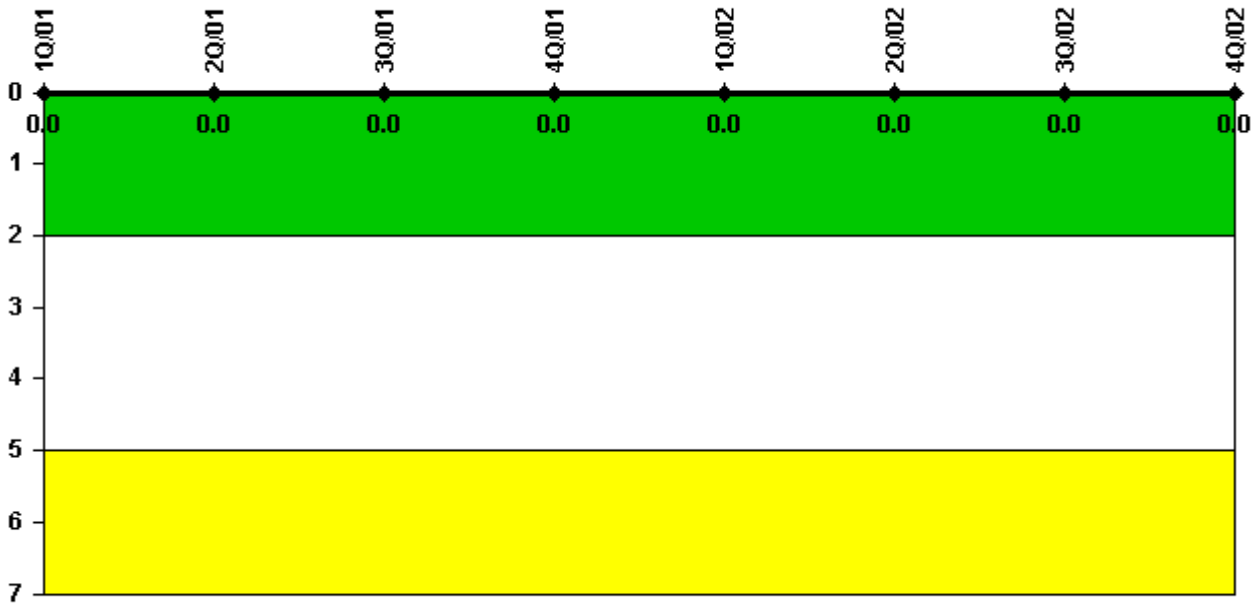
Thresholds: White > 0.080

Notes

Protected Area Security Performance Index	1Q/01	2Q/01	3Q/01	4Q/01	1Q/02	2Q/02	3Q/02	4Q/02
IDS compensatory hours	0	28.70	1.50	0	4.80	0	0	0
CCTV compensatory hours	10.5	0	0	0	0.1	5.2	21.4	0
IDS normalization factor	2.50	2.50	2.50	2.50	2.50	2.50	2.50	2.50
CCTV normalization factor	2.1	2.1	2.1	2.1	2.1	2.1	2.1	2.1
Index Value	0.028	0.028	0.025	0.001	0.001	0	0.001	0.001

Licensee Comments: none

Personnel Screening Program



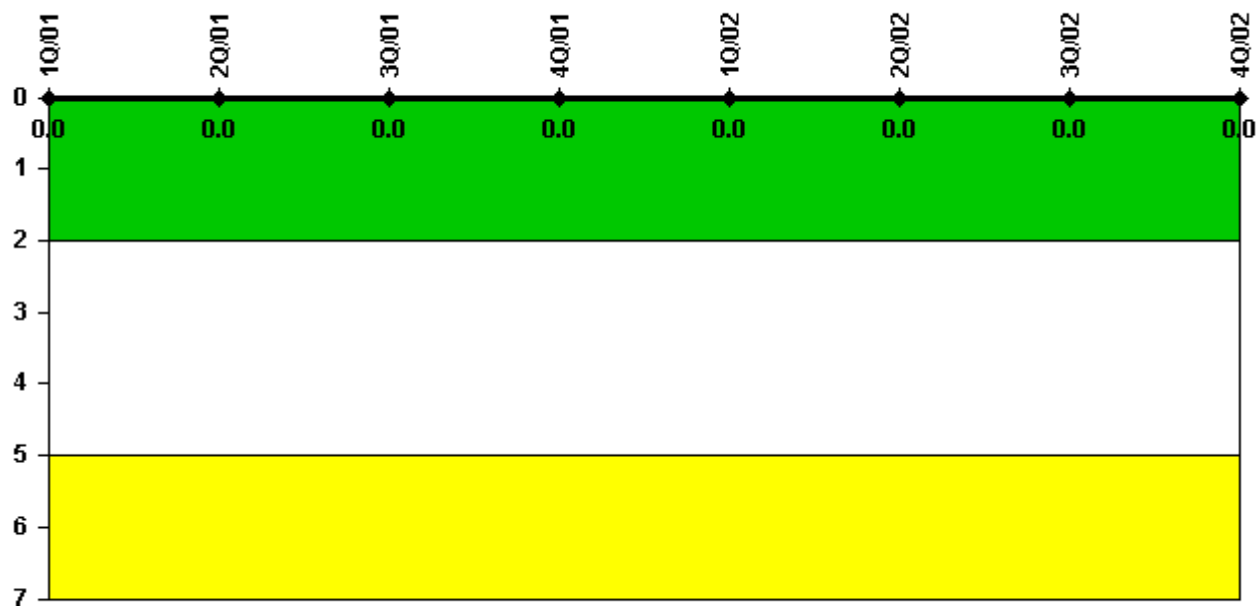
Thresholds: White > 2.0 Yellow > 5.0

Notes

Personnel Screening Program	1Q/01	2Q/01	3Q/01	4Q/01	1Q/02	2Q/02	3Q/02	4Q/02
Program failures	0	0	0	0	0	0	0	0
Indicator value	0	0	0	0	0	0	0	0

Licensee Comments: none

FFD/Personnel Reliability



Thresholds: White > 2.0 Yellow > 5.0

Notes

FFD/Personnel Reliability	1Q/01	2Q/01	3Q/01	4Q/01	1Q/02	2Q/02	3Q/02	4Q/02
Program Failures	0	0	0	0	0	0	0	0
Indicator value	0	0	0	0	0	0	0	0

Licensee Comments: none

▲ [PI Summary](#) | [Inspection Findings Summary](#) | [Reactor Oversight Process](#)

Last Modified: January 30, 2003