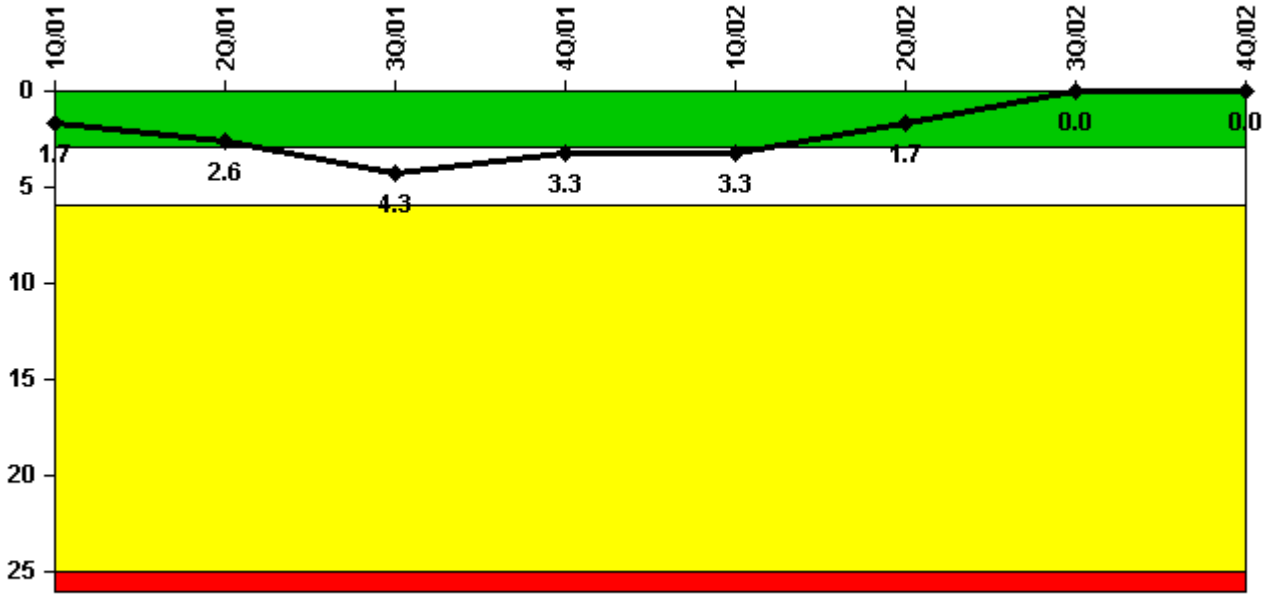


La Salle 2

4Q/2002 Performance Indicators

Licensee's General Comments: none

Unplanned Scrams per 7000 Critical Hrs



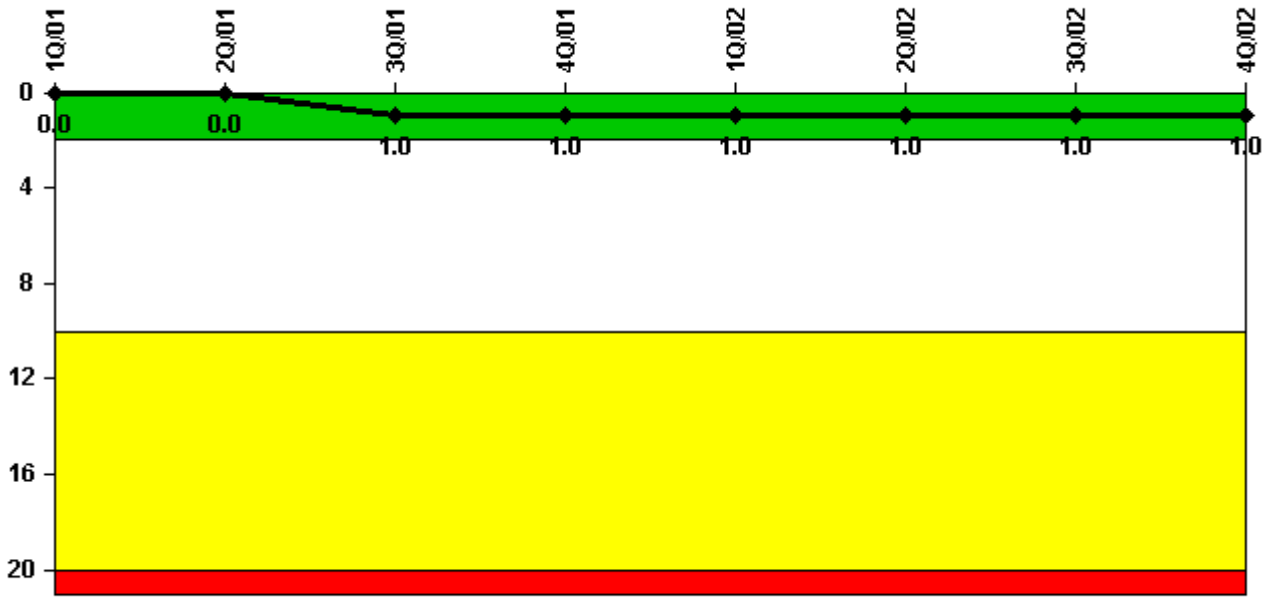
Thresholds: White > 3.0 Yellow > 6.0 Red > 25.0

Notes

Unplanned Scrams per 7000 Critical Hrs	1Q/01	2Q/01	3Q/01	4Q/01	1Q/02	2Q/02	3Q/02	4Q/02
Unplanned scrams	0	2.0	2.0	0	0	0	0	0
Critical hours	2160.0	2109.2	2119.3	2209.0	2160.0	1819.8	2208.0	1948.4
Indicator value	1.7	2.6	4.3	3.3	3.3	1.7	0	0

Licensee Comments: none

Scrams with Loss of Normal Heat Removal



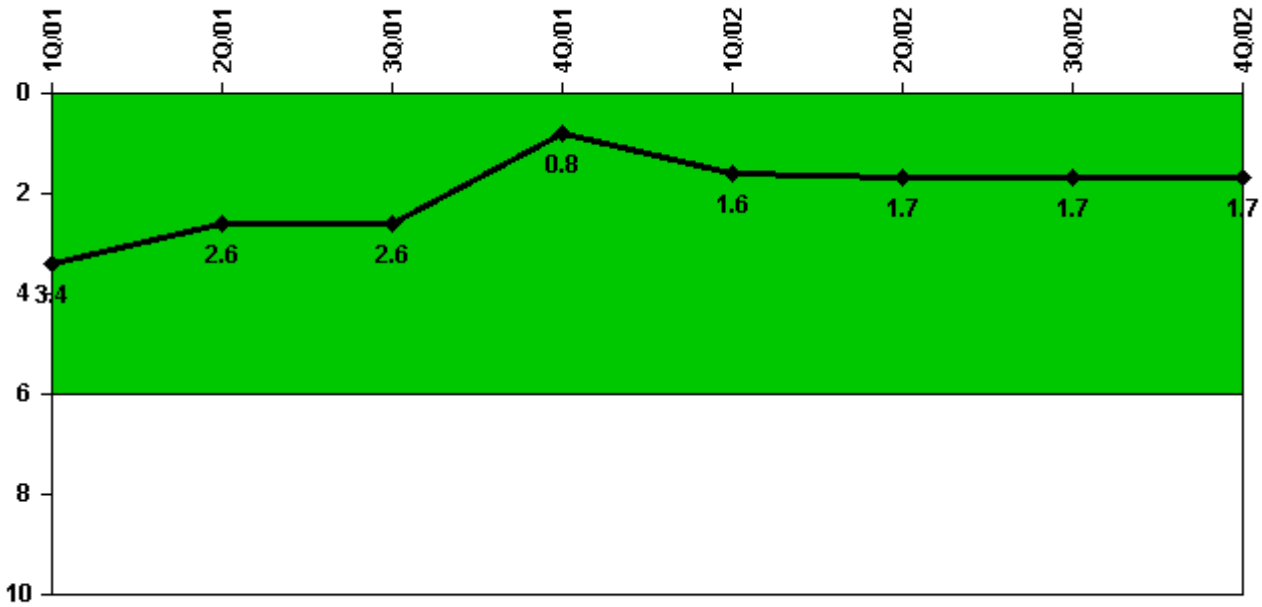
Thresholds: White > 2.0 Yellow > 10.0 Red > 20.0

Notes

Scrams with Loss of Normal Heat Removal	1Q/01	2Q/01	3Q/01	4Q/01	1Q/02	2Q/02	3Q/02	4Q/02
Scrams	0	0	1.0	0	0	0	0	0
Indicator value	0	0	1.0	1.0	1.0	1.0	1.0	1.0

Licensee Comments: none

Unplanned Power Changes per 7000 Critical Hrs



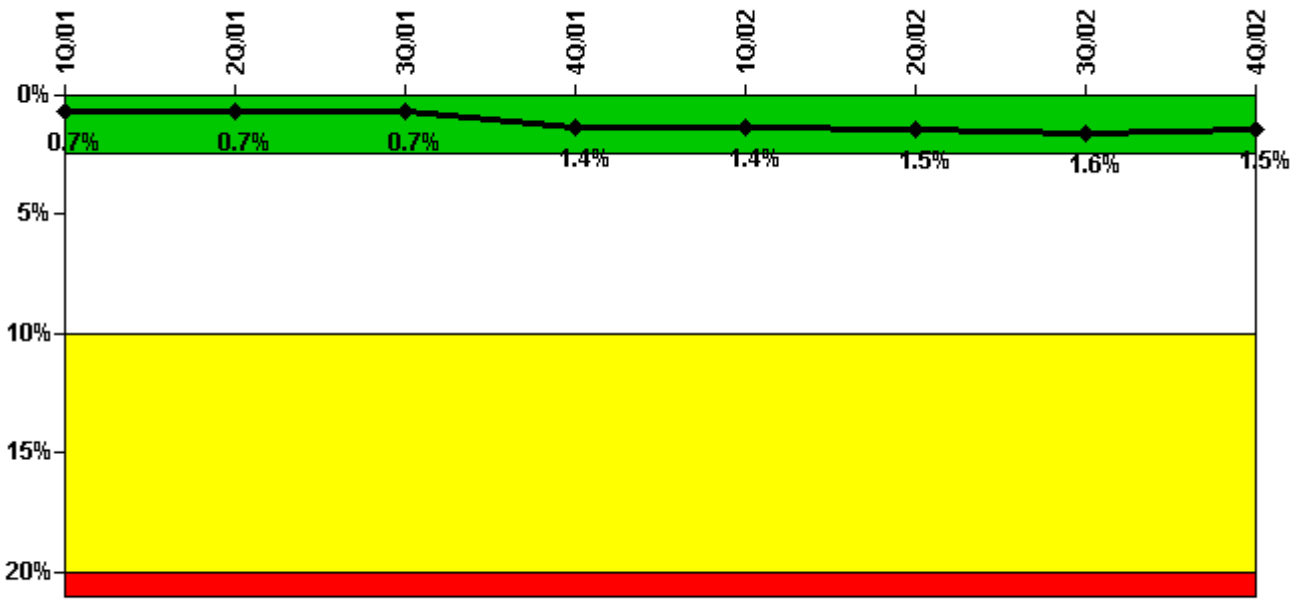
Thresholds: White > 6.0

Notes

Unplanned Power Changes per 7000 Critical Hrs	1Q/01	2Q/01	3Q/01	4Q/01	1Q/02	2Q/02	3Q/02	4Q/02
Unplanned power changes	1.0	0	0	0	2.0	0	0	0
Critical hours	2160.0	2109.2	2119.3	2209.0	2160.0	1819.8	2208.0	1948.4
Indicator value	3.4	2.6	2.6	0.8	1.6	1.7	1.7	1.7

Licensee Comments: none

Safety System Unavailability, Emergency AC Power, >2EDG



Thresholds: White > 2.5% Yellow > 10.0% Red > 20.0%

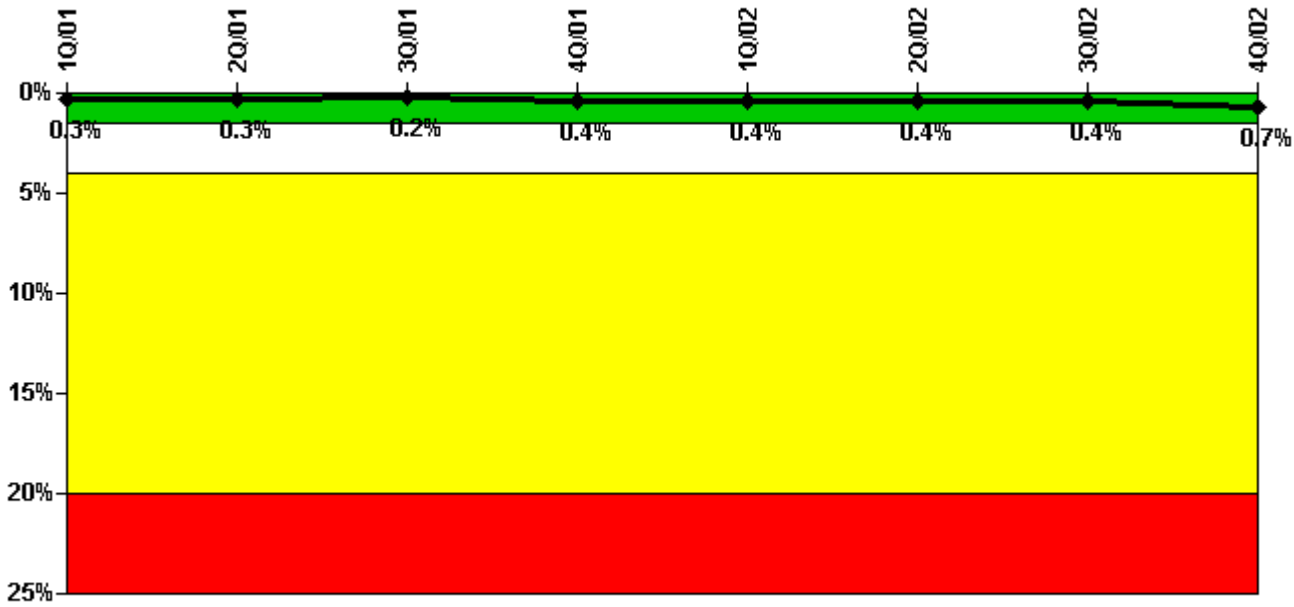
Notes

Safety System Unavailability, Emergency AC Power, >2EDG	1Q/01	2Q/01	3Q/01	4Q/01	1Q/02	2Q/02	3Q/02	4Q/02
Train 1								
Planned unavailable hours	26.20	0.75	0.85	61.05	5.20	6.95	82.40	1.13
Unplanned unavailable hours	23.43	0	0	0	6.30	0	28.00	0
Fault exposure hours	0	0	0	336.00	0	0	0	0
Effective Reset hours	0	0	0	0	0	0	0	0
Required hours	2160.00	2183.00	2208.00	2209.00	2160.00	2183.00	2208.00	2209.00
Train 2								
Planned unavailable hours	35.15	0.75	0.87	70.75	42.12	1.22	0.75	35.65
Unplanned unavailable hours	0	0	0	25.43	0	0	0	0
Fault exposure hours	0	0	0	0	0	0	0	0
Effective Reset hours	0	0	0	0	0	0	0	0
Required hours	2160.00	2183.00	2208.00	2209.00	2160.00	2183.00	2208.00	2209.00
Train 3								
Planned unavailable hours	31.52	1.00	0.75	62.61	0.75	75.65	0.75	47.16
Unplanned unavailable hours	0	0	0	0	0	6.27	0	0
Fault exposure hours	0	0	0	0	0	0	0	0
Effective Reset hours	0	0	0	0	0	0	0	0
Required hours	2160.00	2183.00	2208.00	2209.00	2160.00	2183.00	2208.00	2209.00
Indicator value	0.7%	0.7%	0.7%	1.4%	1.4%	1.5%	1.6%	1.5%

Licensee Comments:

4Q/02: EDG Train 2 and Train 3 Potential 26,304 hours of T/2 fault exposure hours discovered in November 2002, due to inoperable room coolers. Issue is under review.

Safety System Unavailability, High Pressure Injection System (HPCS)



Thresholds: White > 1.5% Yellow > 4.0% Red > 20.0%

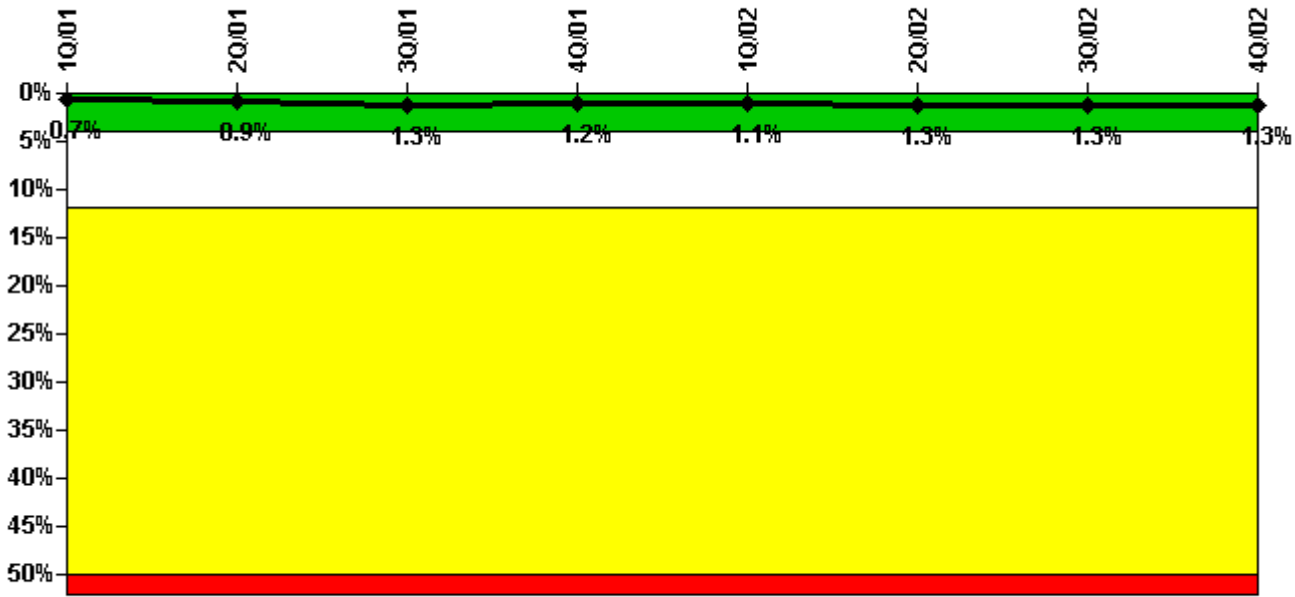
Notes

Safety System Unavailability, High Pressure Injection System (HPCS)	1Q/01	2Q/01	3Q/01	4Q/01	1Q/02	2Q/02	3Q/02	4Q/02
Train 1								
Planned unavailable hours	16.60	0	0	43.72	0	20.10	0	70.40
Unplanned unavailable hours	0	0	0	0	0	0	0	0
Fault exposure hours	0	0	0	0	0	0	0	0
Effective Reset hours	0	0	0	0	0	0	0	0
Required hours	2160.00	2109.20	2119.30	2209.00	2160.00	1819.80	2208.00	1948.40
Indicator value	0.3%	0.3%	0.2%	0.4%	0.4%	0.4%	0.4%	0.7%

Licensee Comments:

4Q/02: HP Train 1 Potential 26,304 hours of T/2 fault exposure hours discovered in November 2002, due to inoperable room coolers. Issue is under review.

Safety System Unavailability, Heat Removal System (RCIC)



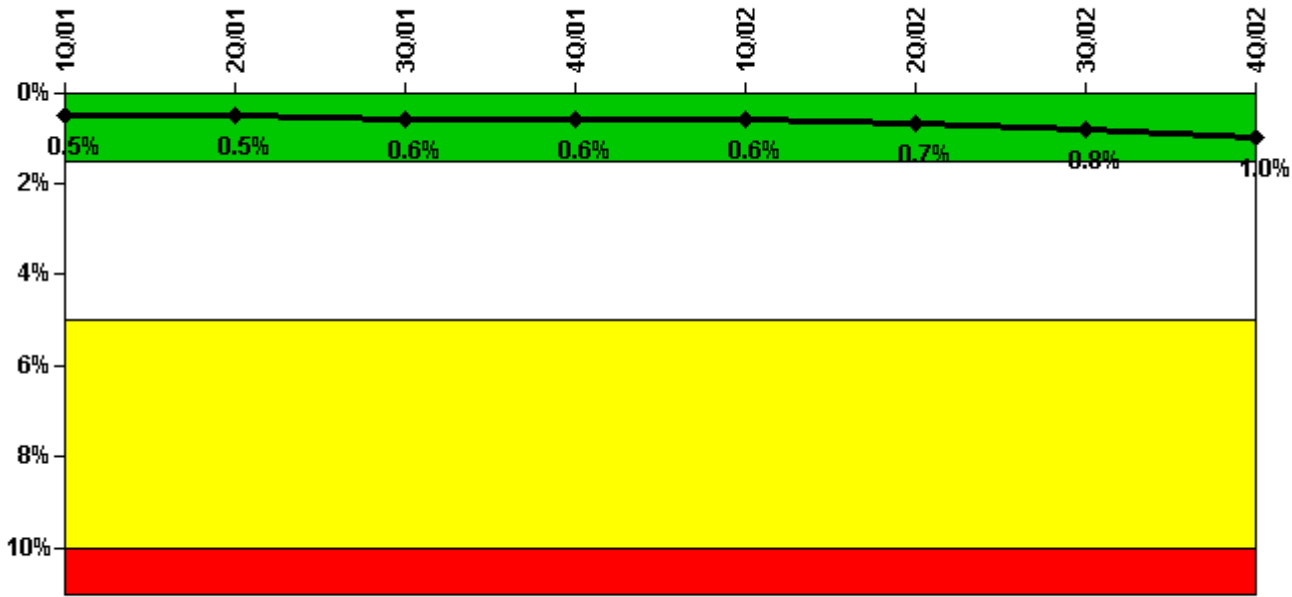
Thresholds: White > 4.0% Yellow > 12.0% Red > 50.0%

Notes

Safety System Unavailability, Heat Removal System (RCIC)	1Q/01	2Q/01	3Q/01	4Q/01	1Q/02	2Q/02	3Q/02	4Q/02
Train 1								
Planned unavailable hours	35.10	48.10	58.00	7.90	1.60	40.20	2.80	2.80
Unplanned unavailable hours	0	0	50.90	0	0	3.70	0	0.30
Fault exposure hours	0	0	0	0	0	0	0	0
Effective Reset hours	0	0	0	0	0	0	0	0
Required hours	2160.00	2109.20	2119.30	2209.00	2160.00	1819.80	2208.00	1948.40
Indicator value	0.7%	0.9%	1.3%	1.2%	1.1%	1.3%	1.3%	1.3%

Licensee Comments: none

Safety System Unavailability, Residual Heat Removal System



Thresholds: White > 1.5% Yellow > 5.0% Red > 10.0%

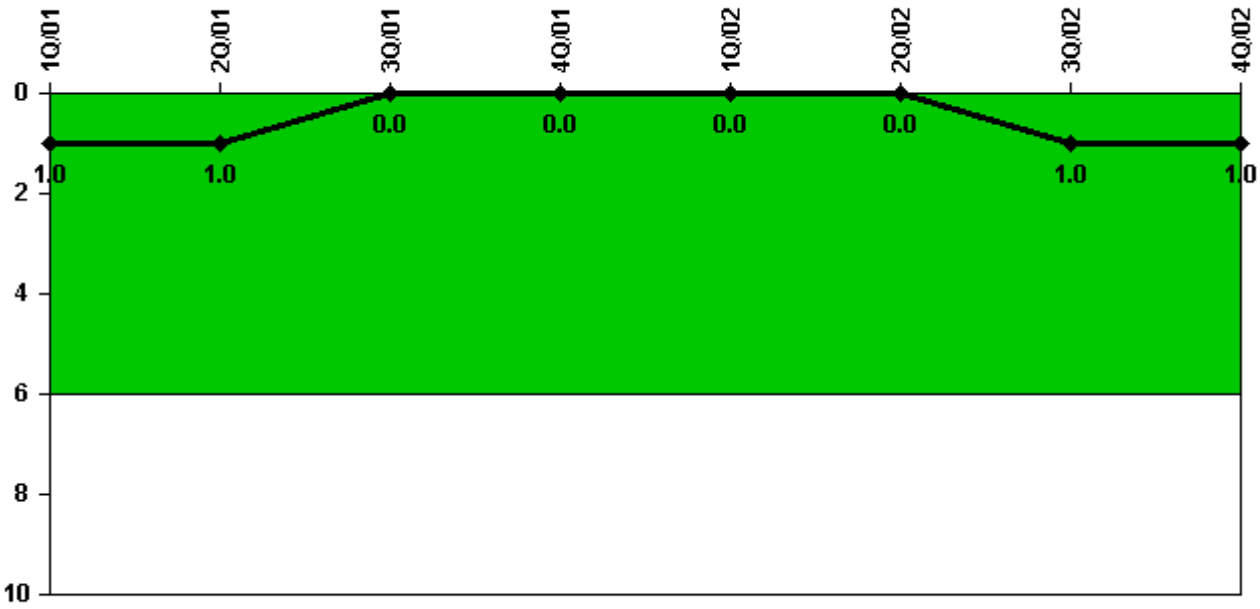
Notes

Safety System Unavailability, Residual Heat Removal System	1Q/01	2Q/01	3Q/01	4Q/01	1Q/02	2Q/02	3Q/02	4Q/02
Train 1								
Planned unavailable hours	35.40	4.40	15.10	8.50	1.00	23.90	56.10	31.10
Unplanned unavailable hours	22.60	0	14.50	0	0	0	20.10	0.30
Fault exposure hours	0	0	0	0	0	0	0	0
Effective Reset hours	0	0	0	0	0	0	0	0
Required hours	2160.00	2183.00	2208.00	2209.00	2160.00	2183.00	2208.00	2209.00
Train 2								
Planned unavailable hours	19.70	0	0	21.10	0.80	27.40	0	36.40
Unplanned unavailable hours	0	0	0	0	0	0	0.90	0.70
Fault exposure hours	0	0	0	0	0	0	0	0
Effective Reset hours	0	0	0	0	0	0	0	0
Required hours	2160.00	2183.00	2208.00	2209.00	2160.00	2183.00	2208.00	2209.00
Indicator value	0.5%	0.5%	0.6%	0.6%	0.6%	0.7%	0.8%	1.0%

Licensee Comments:

4Q/02: RHR Train 2 Potential 26,304 hours of T/2 fault exposure hours discovered in November 2002, due to inoperable room coolers. Issue is under review.

Safety System Functional Failures (BWR)



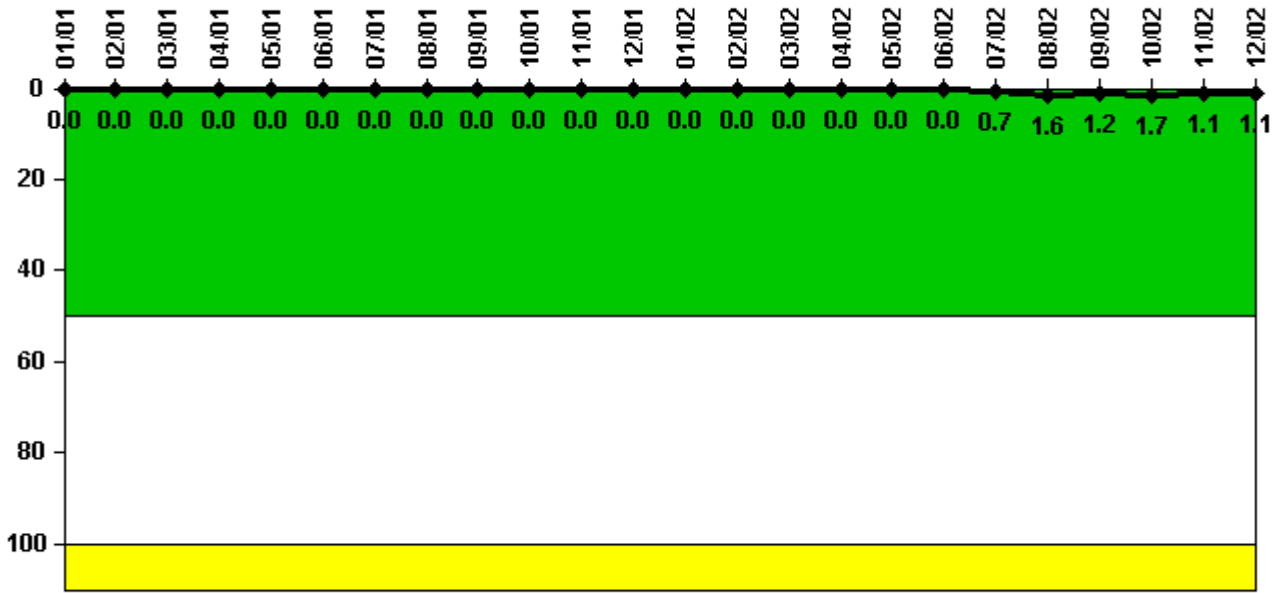
Thresholds: White > 6.0

Notes

Safety System Functional Failures (BWR)	1Q/01	2Q/01	3Q/01	4Q/01	1Q/02	2Q/02	3Q/02	4Q/02
Safety System Functional Failures	0	0	0	0	0	0	1	0
Indicator value	1	1	0	0	0	0	1	1

Licensee Comments: none

Reactor Coolant System Activity



Thresholds: White > 50.0 Yellow > 100.0

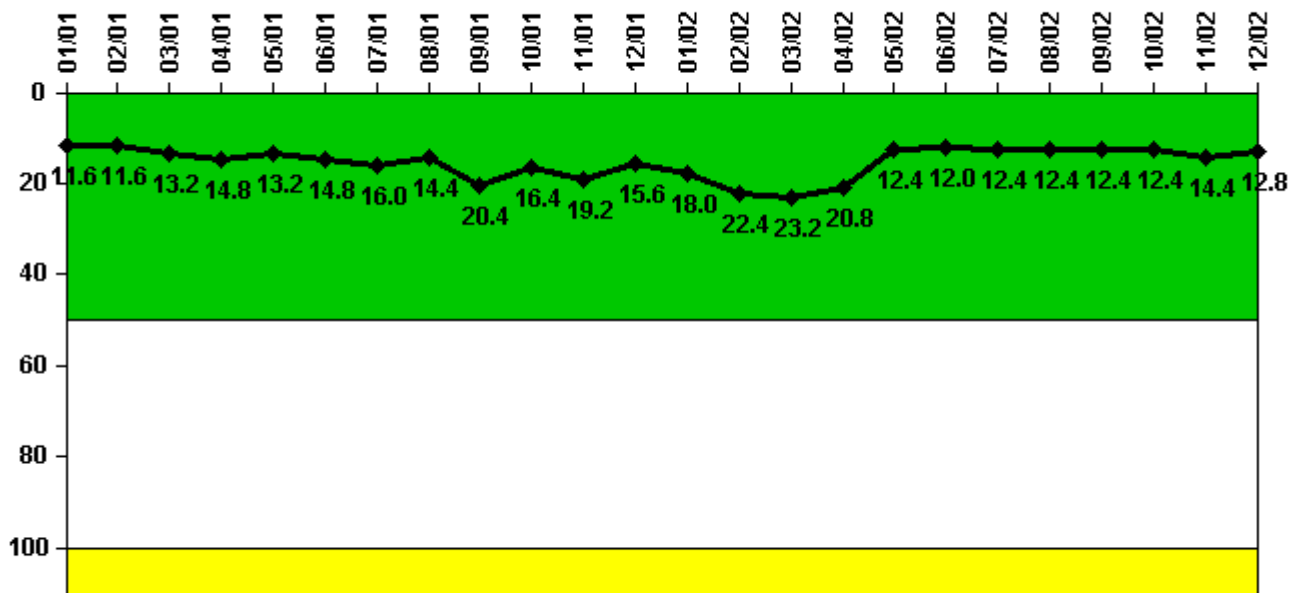
Notes

Reactor Coolant System Activity	1/01	2/01	3/01	4/01	5/01	6/01	7/01	8/01	9/01	10/01	11/01	12/01
Maximum activity	0.000041	0.000027	0.000020	0.000030	0.000020	0.000015	0.000019	0.000017	0.000009	0.000009	0.000008	0.000011
Technical specification limit	0.2	0.2	0.2	0.2	0.2	0.2	0.2	0.2	0.2	0.2	0.2	0.2
Indicator value	0	0	0	0	0	0	0	0	0	0	0	0

Reactor Coolant System Activity	1/02	2/02	3/02	4/02	5/02	6/02	7/02	8/02	9/02	10/02	11/02	12/02
Maximum activity	0.000010	0.000017	0.000013	0.000020	0.000048	0.000039	0.001420	0.003120	0.002370	0.003450	0.002150	0.002120
Technical specification limit	0.2	0.2	0.2	0.2	0.2	0.2	0.2	0.2	0.2	0.2	0.2	0.2
Indicator value	0	0	0	0	0	0	0.7	1.6	1.2	1.7	1.1	1.1

Licensee Comments: none

Reactor Coolant System Leakage



Thresholds: White > 50.0 Yellow > 100.0

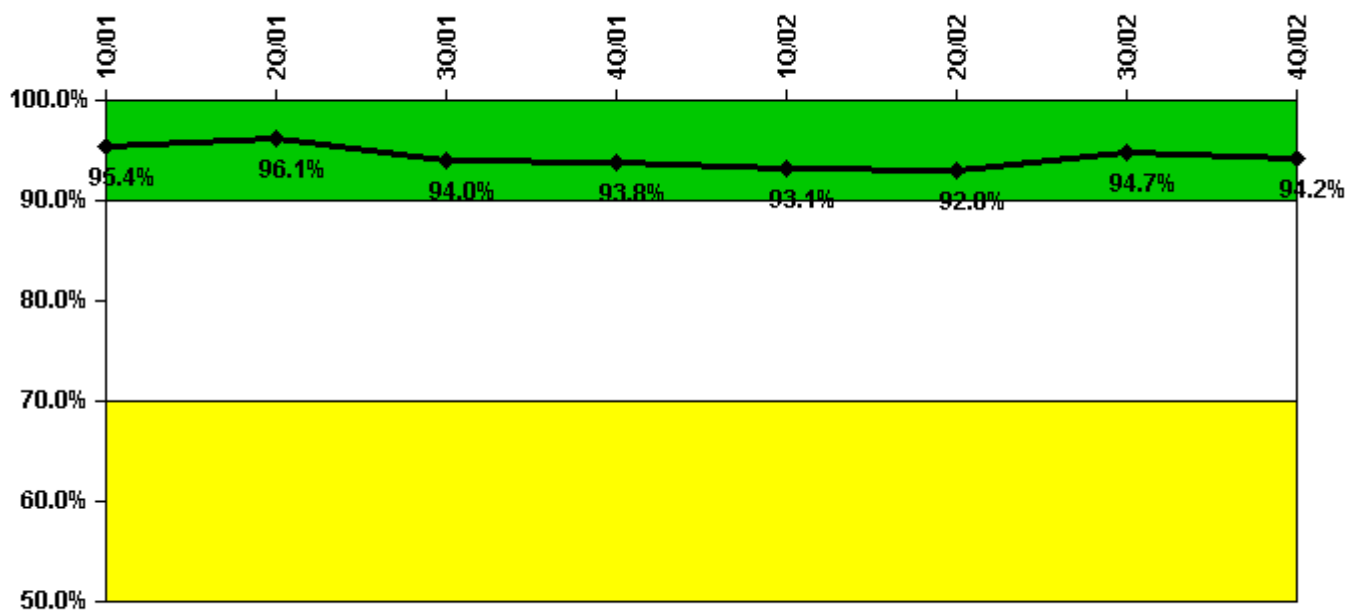
Notes

Reactor Coolant System Leakage	1/01	2/01	3/01	4/01	5/01	6/01	7/01	8/01	9/01	10/01	11/01	12/01
Maximum leakage	2.900	2.900	3.300	3.700	3.300	3.700	4.000	3.600	5.100	4.100	4.800	3.900
Technical specification limit	25.0	25.0	25.0	25.0	25.0	25.0	25.0	25.0	25.0	25.0	25.0	25.0
Indicator value	11.6	11.6	13.2	14.8	13.2	14.8	16.0	14.4	20.4	16.4	19.2	15.6

Reactor Coolant System Leakage	1/02	2/02	3/02	4/02	5/02	6/02	7/02	8/02	9/02	10/02	11/02	12/02
Maximum leakage	4.500	5.600	5.800	5.200	3.100	3.000	3.100	3.100	3.100	3.100	3.600	3.200
Technical specification limit	25.0	25.0	25.0	25.0	25.0	25.0	25.0	25.0	25.0	25.0	25.0	25.0
Indicator value	18.0	22.4	23.2	20.8	12.4	12.0	12.4	12.4	12.4	12.4	14.4	12.8

Licensee Comments: none

Drill/Exercise Performance



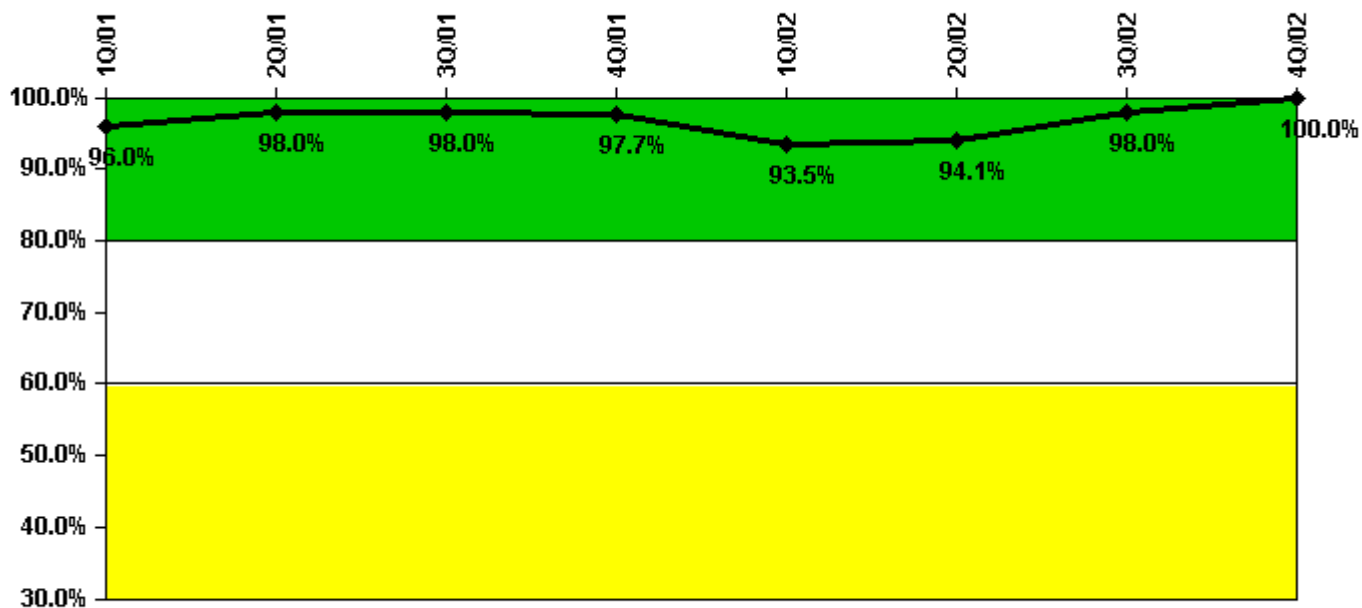
Thresholds: White < 90.0% Yellow < 70.0%

Notes

Drill/Exercise Performance	1Q/01	2Q/01	3Q/01	4Q/01	1Q/02	2Q/02	3Q/02	4Q/02
Successful opportunities	20.0	11.0	30.0	9.0	18.0	11.0	47.0	17.0
Total opportunities	20.0	11.0	34.0	10.0	20.0	12.0	48.0	18.0
Indicator value	95.4%	96.1%	94.0%	93.8%	93.1%	92.8%	94.7%	94.2%

Licensee Comments: none

ERO Drill Participation



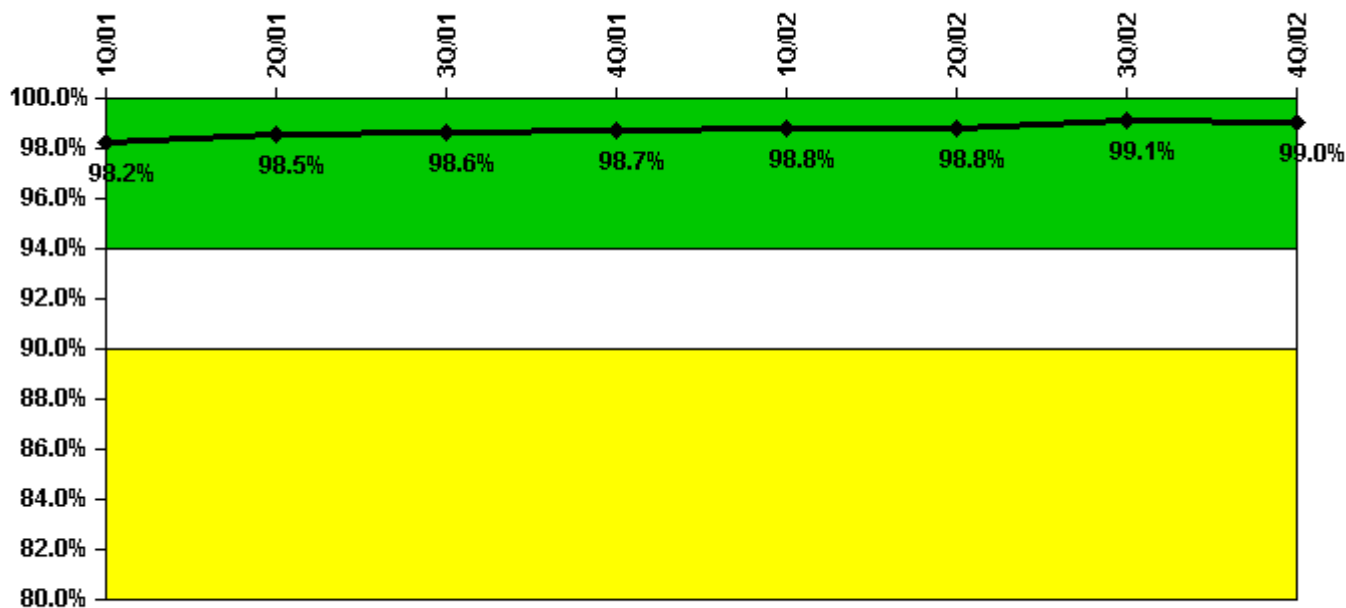
Thresholds: White < 80.0% Yellow < 60.0%

Notes

ERO Drill Participation	1Q/01	2Q/01	3Q/01	4Q/01	1Q/02	2Q/02	3Q/02	4Q/02
Participating Key personnel	48.0	48.0	49.0	43.0	43.0	48.0	50.0	51.0
Total Key personnel	50.0	49.0	50.0	44.0	46.0	51.0	51.0	51.0
Indicator value	96.0%	98.0%	98.0%	97.7%	93.5%	94.1%	98.0%	100.0%

Licensee Comments: none

Alert & Notification System



Thresholds: White < 94.0% Yellow < 90.0%

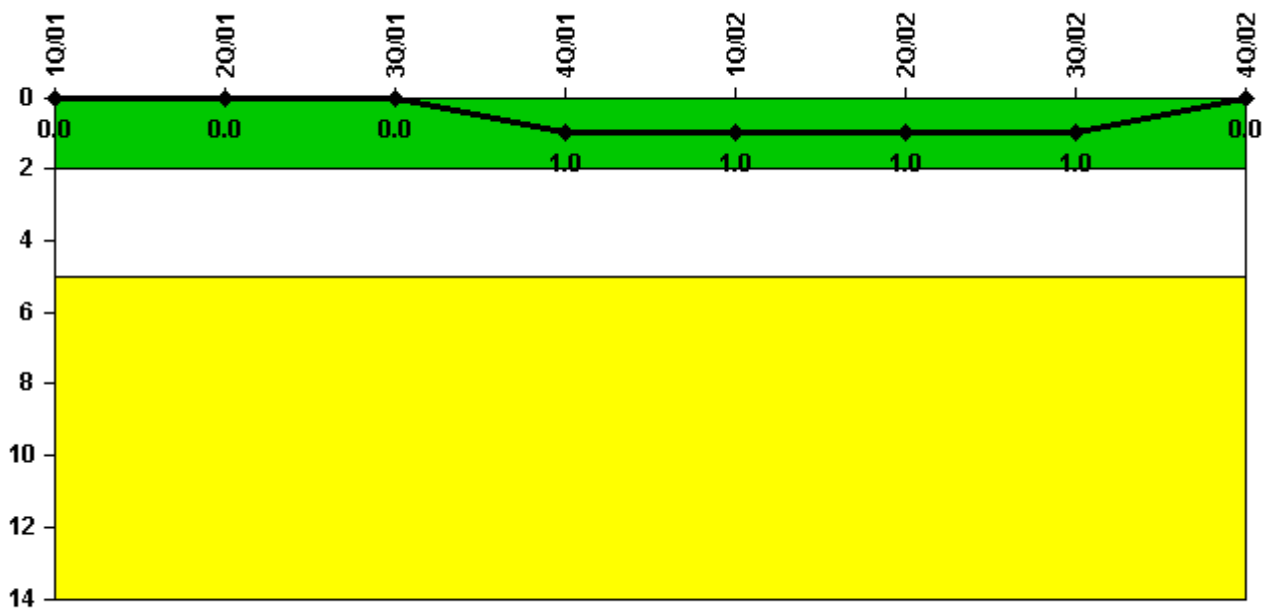
Notes

Alert & Notification System	1Q/01	2Q/01	3Q/01	4Q/01	1Q/02	2Q/02	3Q/02	4Q/02
Successful siren-tests	2240	2254	2202	2160	2120	2150	2160	2489
Total sirens-tests	2278	2278	2244	2176	2142	2176	2176	2512
Indicator value	98.2%	98.5%	98.6%	98.7%	98.8%	98.8%	99.1%	99.0%

Licensee Comments:

4Q/02: Additional sirens were added in the 4th quarter 2002 to replace mobile alert notification process.

Occupational Exposure Control Effectiveness



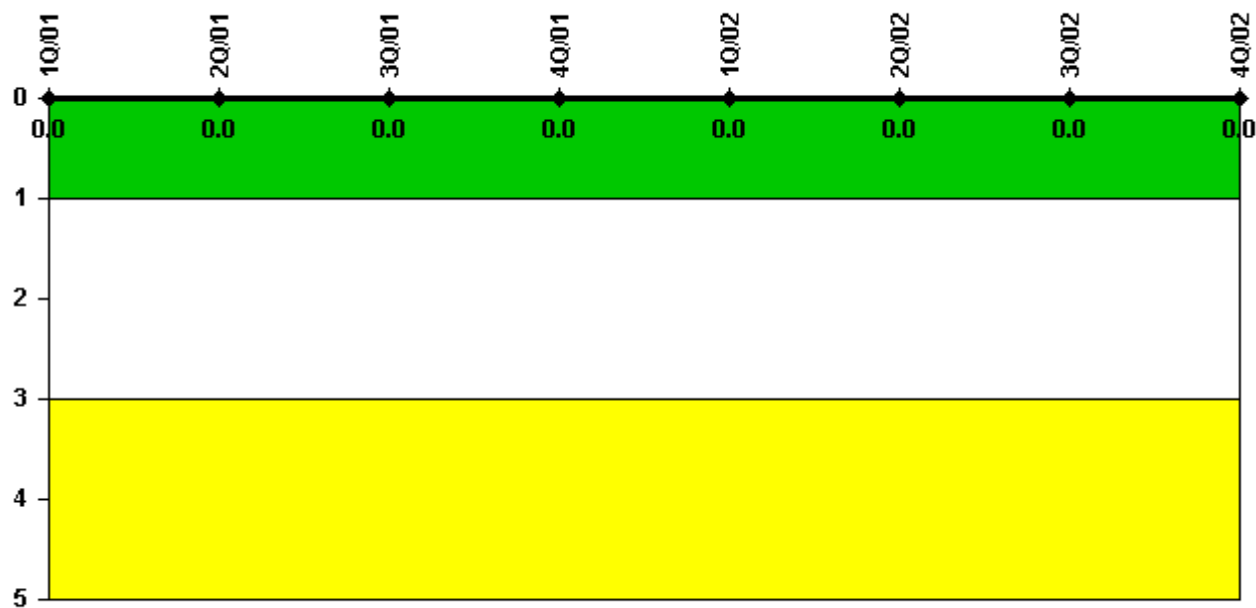
Thresholds: White > 2.0 Yellow > 5.0

Notes

Occupational Exposure Control Effectiveness	1Q/01	2Q/01	3Q/01	4Q/01	1Q/02	2Q/02	3Q/02	4Q/02
High radiation area occurrences	0	0	0	1	0	0	0	0
Very high radiation area occurrences	0	0	0	0	0	0	0	0
Unintended exposure occurrences	0	0	0	0	0	0	0	0
Indicator value	0	0	0	1	1	1	1	0

Licensee Comments: none

RETS/ODCM Radiological Effluent



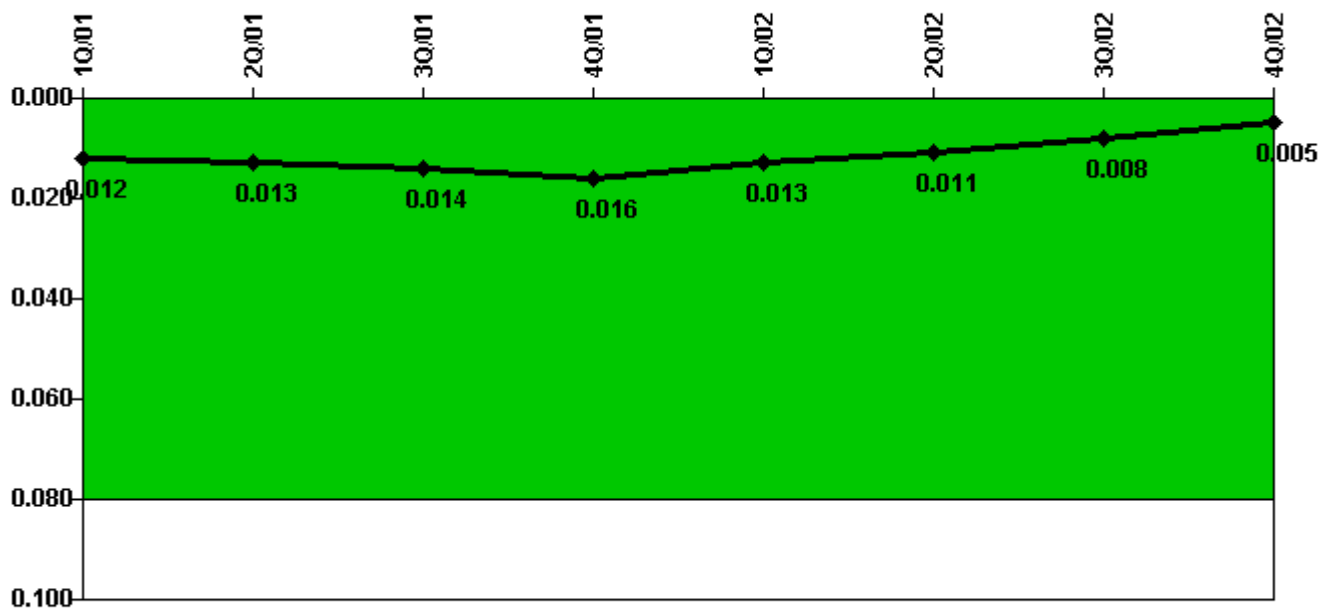
Thresholds: White > 1.0 Yellow > 3.0

Notes

RETS/ODCM Radiological Effluent	1Q/01	2Q/01	3Q/01	4Q/01	1Q/02	2Q/02	3Q/02	4Q/02
RETS/ODCM occurrences	0	0	0	0	0	0	0	0
Indicator value	0	0	0	0	0	0	0	0

Licensee Comments: none

Protected Area Security Performance Index



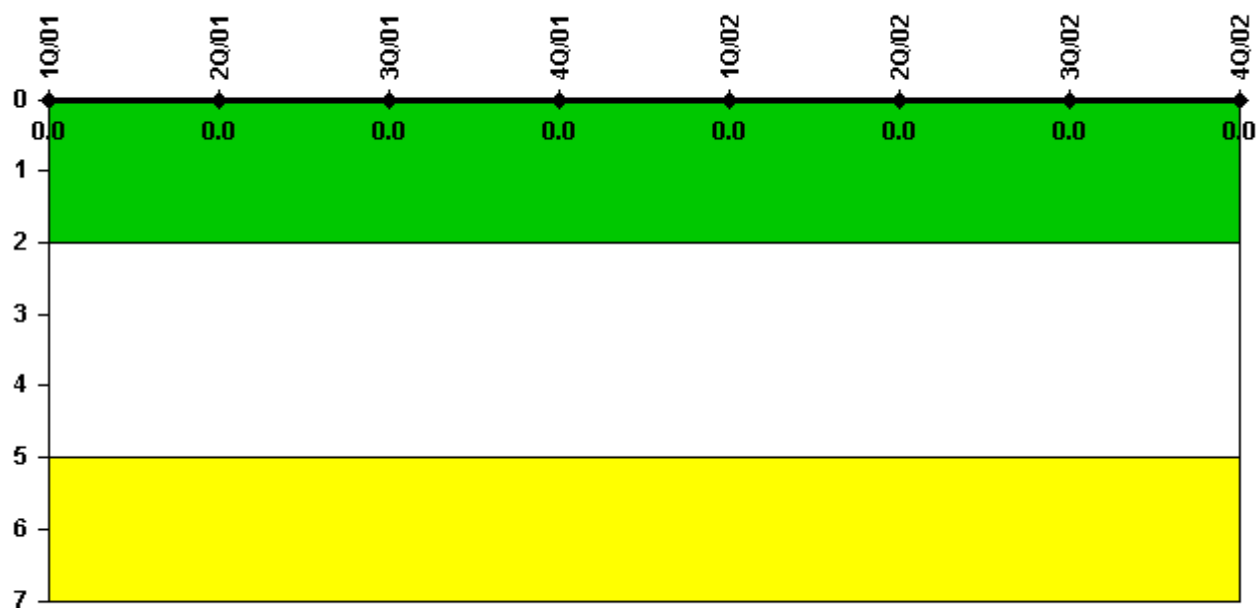
Thresholds: White > 0.080

Notes

Protected Area Security Performance Index	1Q/01	2Q/01	3Q/01	4Q/01	1Q/02	2Q/02	3Q/02	4Q/02
IDS compensatory hours	75.10	51.60	95.90	68.40	10.80	11.50	36.40	42.60
CCTV compensatory hours	0	17.6	0.4	24.6	0	4.7	2.8	0
IDS normalization factor	1.20	1.20	1.20	1.20	1.20	1.20	1.20	1.20
CCTV normalization factor	1.0	1.0	1.0	1.0	1.0	1.0	1.0	1.0
Index Value	0.012	0.013	0.014	0.016	0.013	0.011	0.008	0.005

Licensee Comments: none

Personnel Screening Program



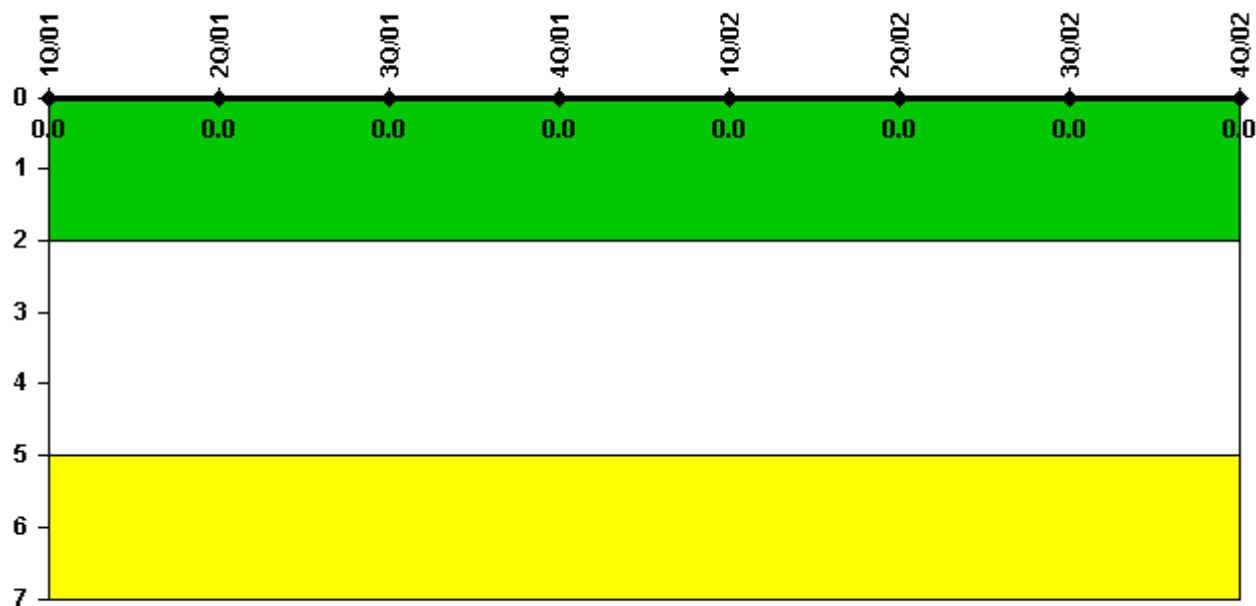
Thresholds: White > 2.0 Yellow > 5.0

Notes

Personnel Screening Program	1Q/01	2Q/01	3Q/01	4Q/01	1Q/02	2Q/02	3Q/02	4Q/02
Program failures	0	0	0	0	0	0	0	0
Indicator value	0	0	0	0	0	0	0	0

Licensee Comments: none

FFD/Personnel Reliability



Thresholds: White > 2.0 Yellow > 5.0

Notes

FFD/Personnel Reliability	1Q/01	2Q/01	3Q/01	4Q/01	1Q/02	2Q/02	3Q/02	4Q/02
Program Failures	0	0	0	0	0	0	0	0
Indicator value	0	0	0	0	0	0	0	0

Licensee Comments: none

▲ [PI Summary](#) | [Inspection Findings Summary](#) | [Reactor Oversight Process](#)

Last Modified: January 30, 2003