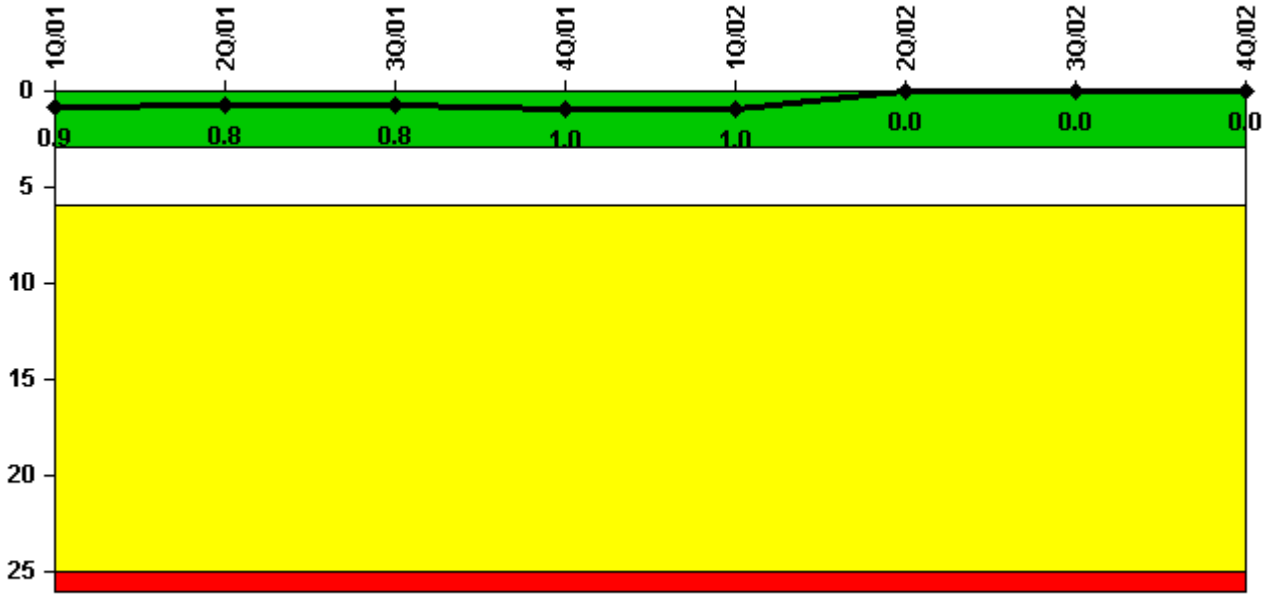


Kewaunee

4Q/2002 Performance Indicators

Licensee's General Comments: NRC Performance Indicator Report

Unplanned Scrams per 7000 Critical Hrs



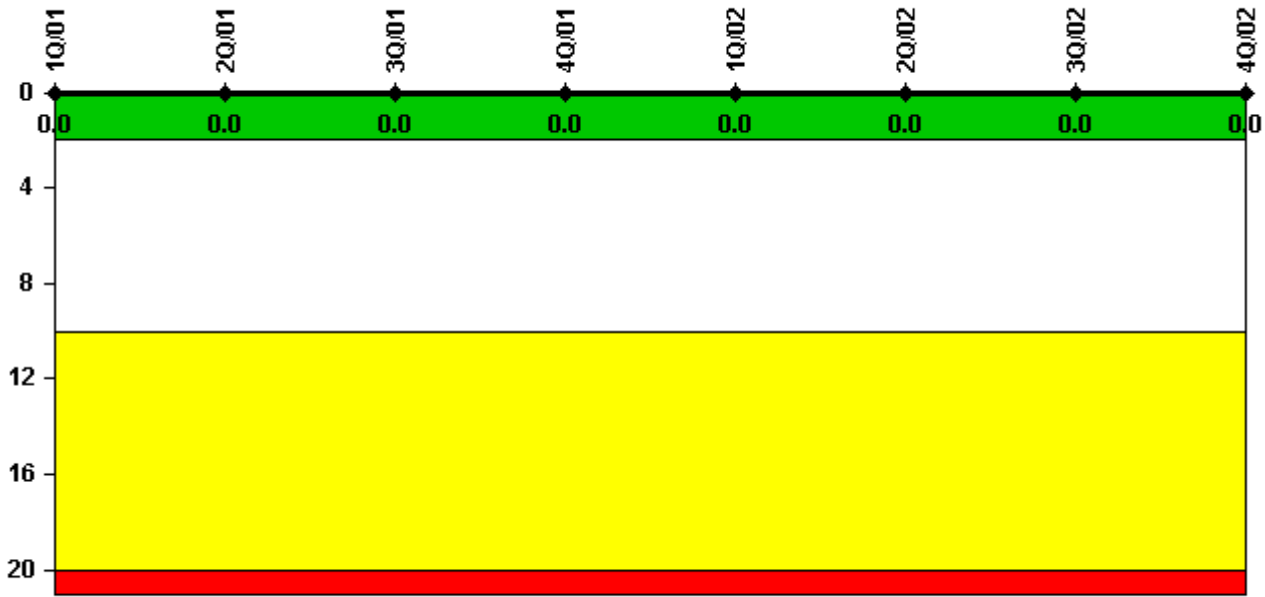
Thresholds: White > 3.0 Yellow > 6.0 Red > 25.0

Notes

Unplanned Scrams per 7000 Critical Hrs	1Q/01	2Q/01	3Q/01	4Q/01	1Q/02	2Q/02	3Q/02	4Q/02
Unplanned scrams	0	1.0	0	0	0	0	0	0
Critical hours	2160.0	2156.8	2040.2	723.8	2160.0	1951.8	2208.0	2209.0
Indicator value	0.9	0.8	0.8	1.0	1.0	0	0	0

Licensee Comments: none

Scrams with Loss of Normal Heat Removal



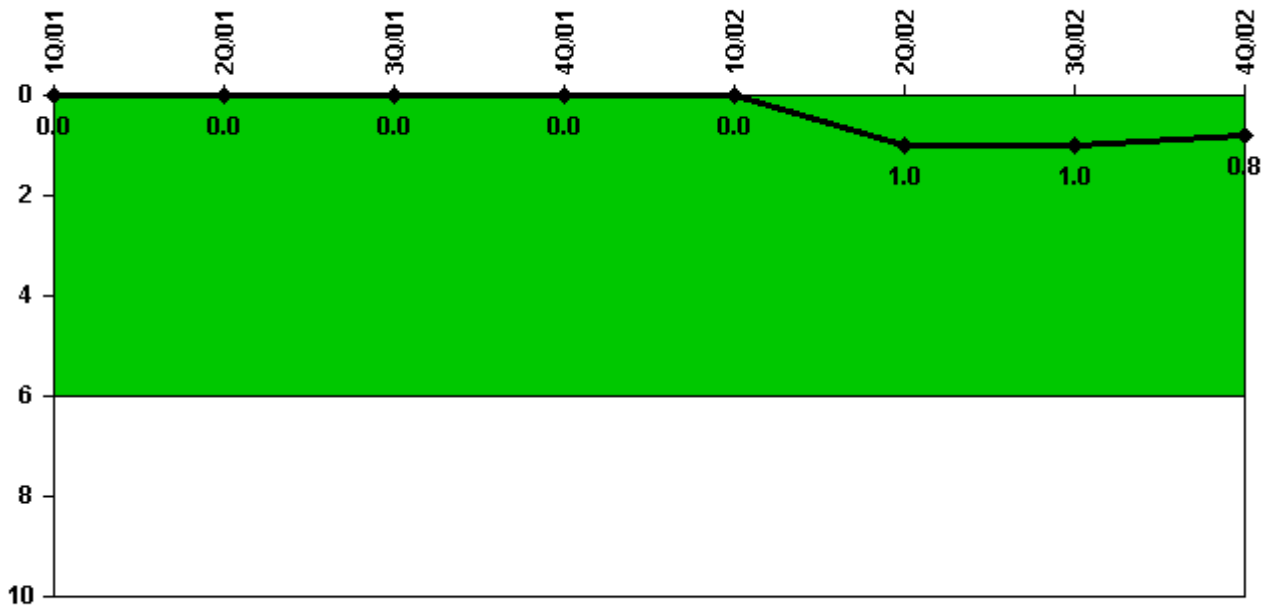
Thresholds: White > 2.0 Yellow > 10.0 Red > 20.0

Notes

Scrams with Loss of Normal Heat Removal	1Q/01	2Q/01	3Q/01	4Q/01	1Q/02	2Q/02	3Q/02	4Q/02
Scrams	0	0	0	0	0	0	0	0
Indicator value	0	0	0	0	0	0	0	0

Licensee Comments: none

Unplanned Power Changes per 7000 Critical Hrs



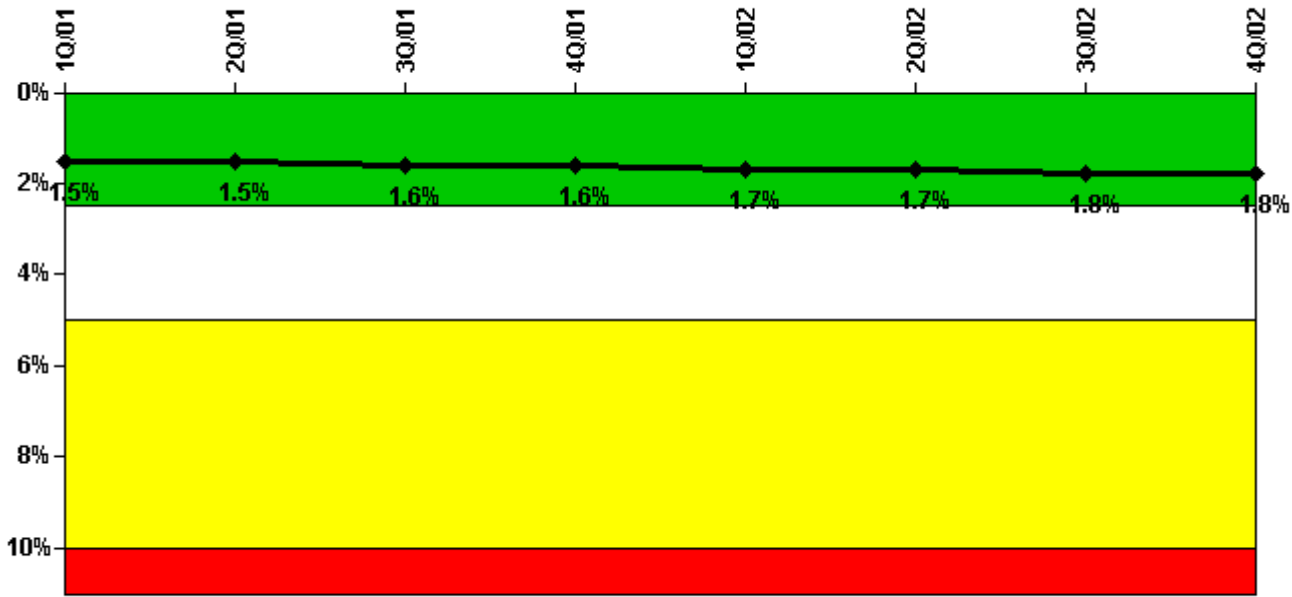
Thresholds: White > 6.0

Notes

Unplanned Power Changes per 7000 Critical Hrs	1Q/01	2Q/01	3Q/01	4Q/01	1Q/02	2Q/02	3Q/02	4Q/02
Unplanned power changes	0	0	0	0	0	1.0	0	0
Critical hours	2160.0	2156.8	2040.2	723.8	2160.0	1951.8	2208.0	2209.0
Indicator value	0	0	0	0	0	1.0	1.0	0.8

Licensee Comments: none

Safety System Unavailability, Emergency AC Power



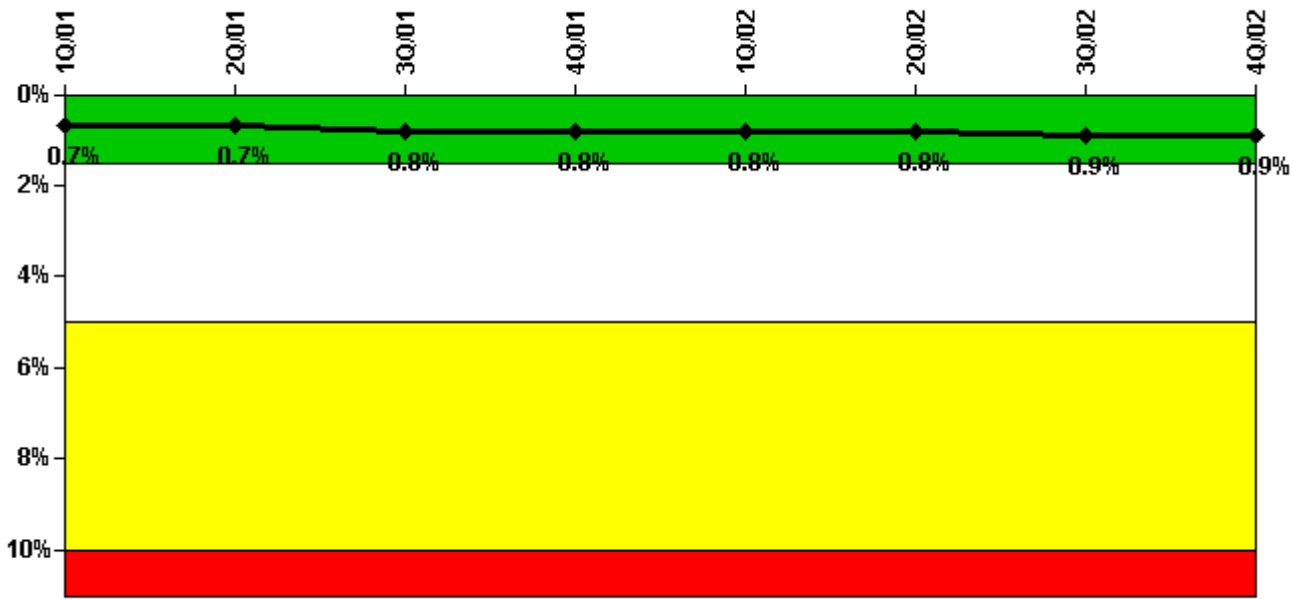
Thresholds: White > 2.5% Yellow > 5.0% Red > 10.0%

Notes

Safety System Unavailability, Emergency AC Power	1Q/01	2Q/01	3Q/01	4Q/01	1Q/02	2Q/02	3Q/02	4Q/02
Train 1								
Planned unavailable hours	34.02	47.22	25.83	32.54	24.70	35.69	21.83	33.89
Unplanned unavailable hours	0	0	0	0	0	4.67	0	4.80
Fault exposure hours	0	0	0	0	0	0	0	0
Effective Reset hours	0	0	0	0	0	0	0	0
Required hours	2160.00	2183.00	2208.00	2209.00	2160.00	2183.00	2208.00	2209.00
Train 2								
Planned unavailable hours	17.97	31.27	27.13	13.76	42.40	32.51	30.70	34.53
Unplanned unavailable hours	2.60	0	0	0	9.69	0	0	2.97
Fault exposure hours	0	0	0	0	0.13	0	0	0
Effective Reset hours	0	0	0	0	0	0	0	0
Required hours	2160.00	2183.00	2208.00	2209.00	2160.00	2183.00	2208.00	2209.00
Indicator value	1.5%	1.5%	1.6%	1.6%	1.7%	1.7%	1.8%	1.8%

Licensee Comments: none

Safety System Unavailability, High Pressure Injection System (HPSI)



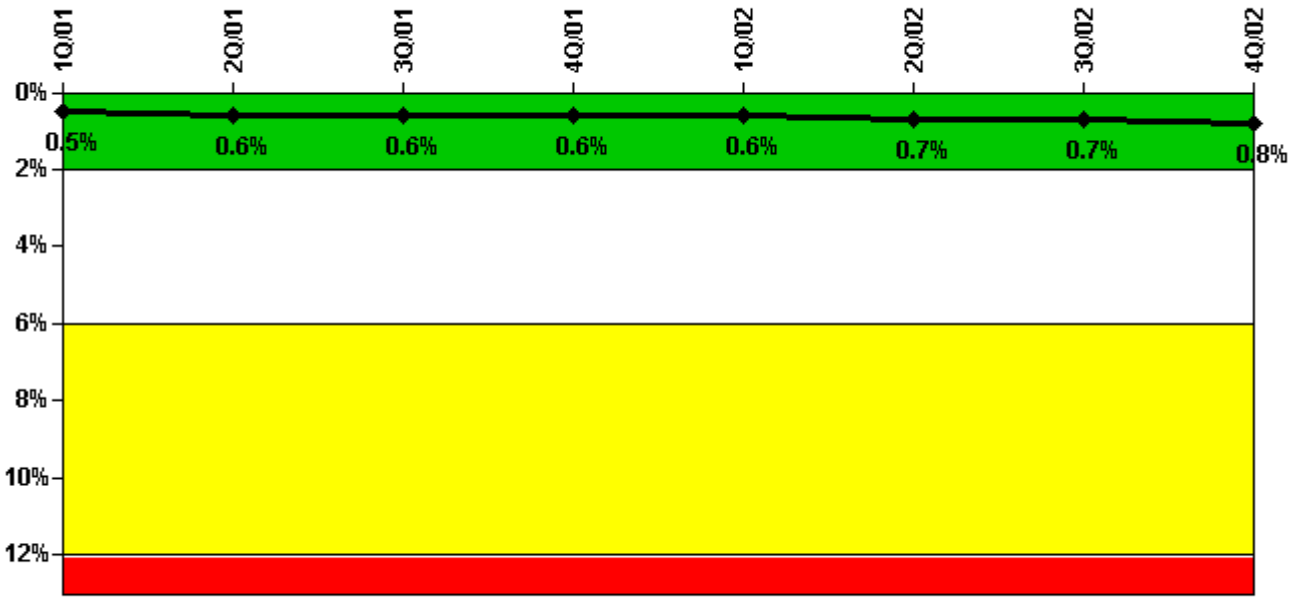
Thresholds: White > 1.5% Yellow > 5.0% Red > 10.0%

Notes

Safety System Unavailability, High Pressure Injection System (HPSI)	1Q/01	2Q/01	3Q/01	4Q/01	1Q/02	2Q/02	3Q/02	4Q/02
Train 1								
Planned unavailable hours	18.89	30.28	10.61	0	9.00	9.17	8.03	18.55
Unplanned unavailable hours	0	0	0	0	0	4.67	0	0
Fault exposure hours	0	0	0	0	0	0	0	0
Effective Reset hours	0	0	0	0	0	0	0	0
Required hours	2160.00	2156.76	2040.17	778.00	2160.00	1951.76	2208.00	2209.00
Train 2								
Planned unavailable hours	0.91	11.93	5.63	0	8.13	10.68	14.77	19.46
Unplanned unavailable hours	2.60	0	0	0	0	0	0	0
Fault exposure hours	0	0	0	0	0	0	0	0
Effective Reset hours	0	0	0	0	0	0	0	0
Required hours	2160.00	2156.76	2040.17	778.00	2160.00	1951.76	2208.00	2209.00
Indicator value	0.7%	0.7%	0.8%	0.8%	0.8%	0.8%	0.9%	0.9%

Licensee Comments: none

Safety System Unavailability, Heat Removal System (AFW)



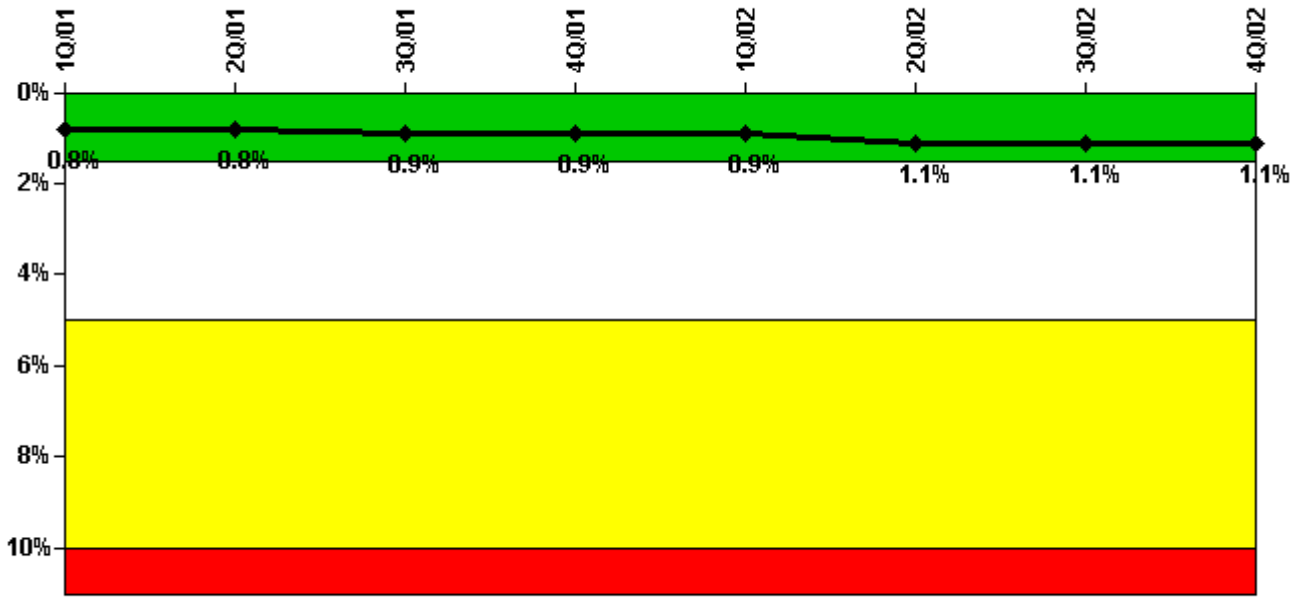
Thresholds: White > 2.0% Yellow > 6.0% Red > 12.0%

Notes

Safety System Unavailability, Heat Removal System (AFW)	1Q/01	2Q/01	3Q/01	4Q/01	1Q/02	2Q/02	3Q/02	4Q/02
Train 1								
Planned unavailable hours	10.07	30.33	1.39	0.35	11.17	26.25	3.10	26.91
Unplanned unavailable hours	0	0.30	0	0	0	4.67	0.79	0
Fault exposure hours	0	0	0	0	0	0	0	0
Effective Reset hours	0	0	0	0	0	0	0	0
Required hours	2160.00	2156.76	2076.00	812.10	2160.00	1967.27	2208.00	2209.00
Train 2								
Planned unavailable hours	1.09	10.72	2.22	0.25	9.36	11.42	7.83	18.24
Unplanned unavailable hours	2.60	15.35	0	0.27	0	0	0.39	0
Fault exposure hours	0	17.93	0	0	0	0	0	0
Effective Reset hours	0	0	0	0	0	0	0	0
Required hours	2160.00	2156.76	2076.00	812.10	2160.00	1967.27	2208.00	2209.00
Train 3								
Planned unavailable hours	3.46	3.20	2.90	3.46	8.22	4.68	4.18	17.50
Unplanned unavailable hours	3.92	3.88	0	12.52	0	0	1.75	17.20
Fault exposure hours	0	0	0	0	0	0	0	0
Effective Reset hours	0	0	0	0	0	0	0	0
Required hours	2160.00	2156.76	2076.00	812.10	2160.00	1967.27	2208.00	2209.00
Indicator value	0.5%	0.6%	0.6%	0.6%	0.6%	0.7%	0.7%	0.8%

Licensee Comments: none

Safety System Unavailability, Residual Heat Removal System



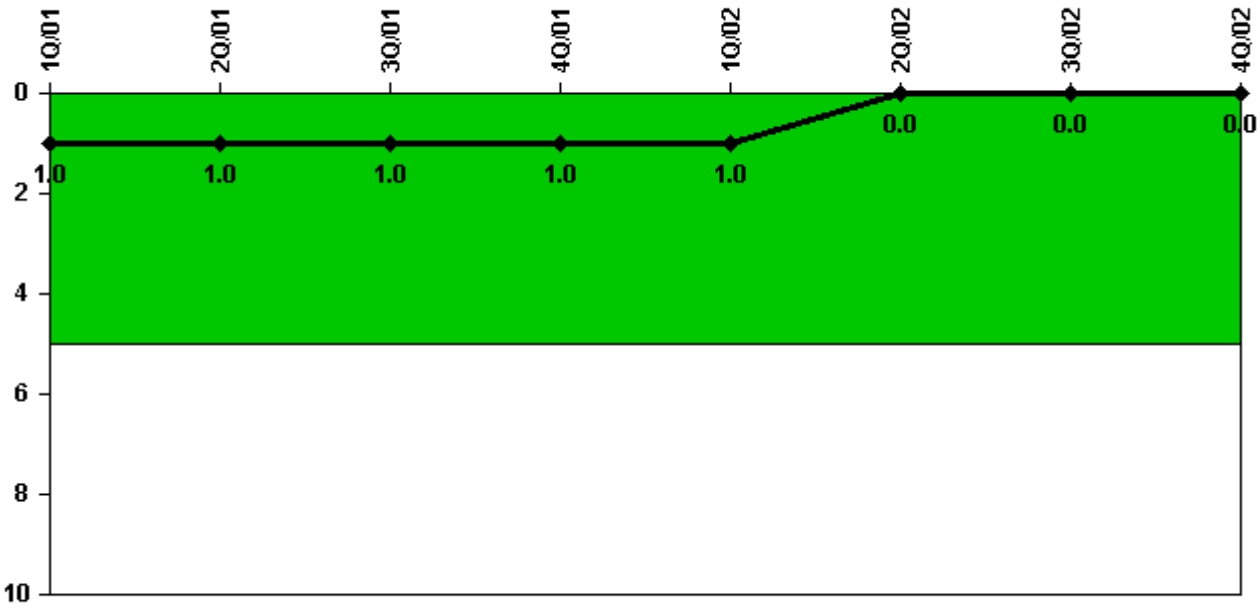
Thresholds: White > 1.5% Yellow > 5.0% Red > 10.0%

Notes

Safety System Unavailability, Residual Heat Removal System	1Q/01	2Q/01	3Q/01	4Q/01	1Q/02	2Q/02	3Q/02	4Q/02
Train 1								
Planned unavailable hours	24.15	28.66	3.98	0.66	18.09	14.67	9.98	24.05
Unplanned unavailable hours	0	0	0	0	3.90	71.93	0	0
Fault exposure hours	0	0	0	0	0	0	0	0
Effective Reset hours	0	0	0	0	0	0	0	0
Required hours	2160.00	2183.00	2208.00	2209.00	2160.00	2183.00	2208.00	2209.00
Train 2								
Planned unavailable hours	0.90	9.75	11.99	0.55	11.69	23.62	11.44	17.58
Unplanned unavailable hours	2.60	0	0	0	7.62	0	0	0
Fault exposure hours	0	0	0	0	0	0	0	0
Effective Reset hours	0	0	0	0	0	0	0	0
Required hours	2160.00	2183.00	2208.00	2209.00	2160.00	2183.00	2208.00	2209.00
Indicator value	0.8%	0.8%	0.9%	0.9%	0.9%	1.1%	1.1%	1.1%

Licensee Comments: none

Safety System Functional Failures (PWR)



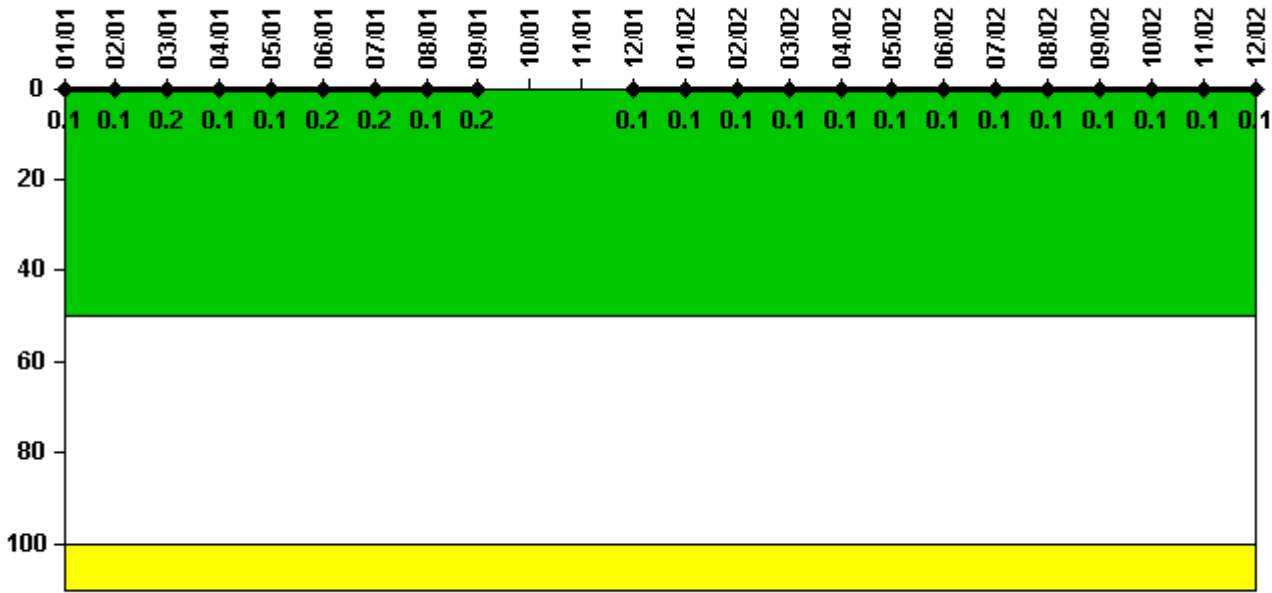
Thresholds: White > 5.0

Notes

Safety System Functional Failures (PWR)	1Q/01	2Q/01	3Q/01	4Q/01	1Q/02	2Q/02	3Q/02	4Q/02
Safety System Functional Failures	0	1	0	0	0	0	0	0
Indicator value	1	1	1	1	1	0	0	0

Licensee Comments: none

Reactor Coolant System Activity



Thresholds: White > 50.0 Yellow > 100.0

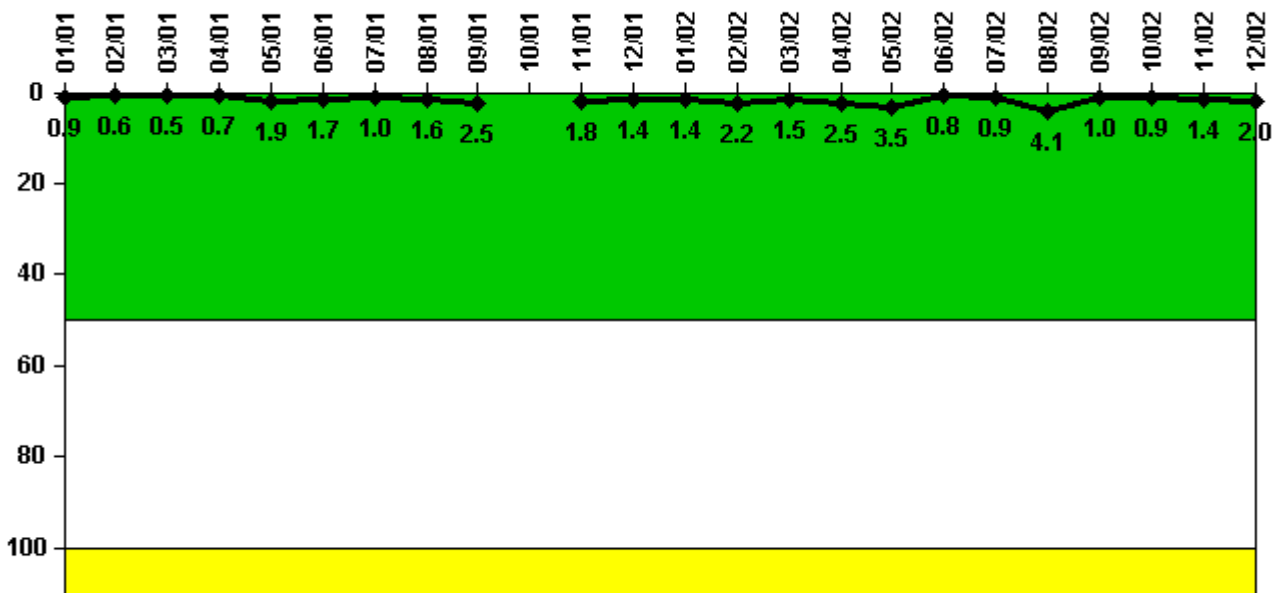
Notes

Reactor Coolant System Activity	1/01	2/01	3/01	4/01	5/01	6/01	7/01	8/01	9/01	10/01	11/01	12/01
Maximum activity	0.000260	0.000270	0.000320	0.000286	0.000282	0.000310	0.000301	0.000295	0.000317	N/A	N/A	0.000203
Technical specification limit	0.2	0.2	0.2	0.2	0.2	0.2	0.2	0.2	0.2	0.2	0.2	0.2
Indicator value	0.1	0.1	0.2	0.1	0.1	0.2	0.2	0.1	0.2	N/A	N/A	0.1

Reactor Coolant System Activity	1/02	2/02	3/02	4/02	5/02	6/02	7/02	8/02	9/02	10/02	11/02	12/02
Maximum activity	0.000215	0.000224	0.000215	0.000247	0.000236	0.000248	0.000260	0.000272	0.000248	0.000258	0.000292	0.000288
Technical specification limit	0.2	0.2	0.2	0.2	0.2	0.2	0.2	0.2	0.2	0.2	0.2	0.2
Indicator value	0.1	0.1	0.1	0.1	0.1	0.1	0.1	0.1	0.1	0.1	0.1	0.1

Licensee Comments: none

Reactor Coolant System Leakage



Thresholds: White > 50.0 Yellow > 100.0

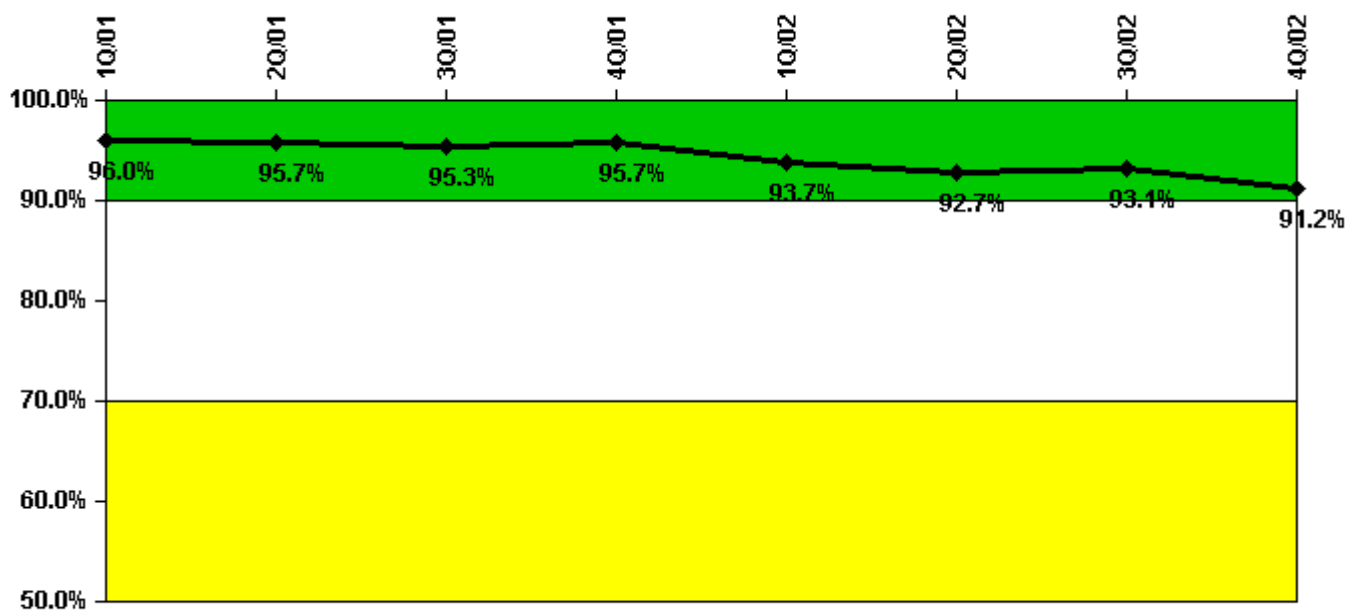
Notes

Reactor Coolant System Leakage	1/01	2/01	3/01	4/01	5/01	6/01	7/01	8/01	9/01	10/01	11/01	12/01
Maximum leakage	0.088	0.062	0.054	0.070	0.193	0.173	0.097	0.156	0.248	N/A	0.181	0.141
Technical specification limit	10.0	10.0	10.0	10.0	10.0	10.0	10.0	10.0	10.0	10.0	10.0	10.0
Indicator value	0.9	0.6	0.5	0.7	1.9	1.7	1.0	1.6	2.5	N/A	1.8	1.4

Reactor Coolant System Leakage	1/02	2/02	3/02	4/02	5/02	6/02	7/02	8/02	9/02	10/02	11/02	12/02
Maximum leakage	0.141	0.220	0.152	0.251	0.348	0.083	0.087	0.410	0.098	0.089	0.138	0.201
Technical specification limit	10.0	10.0	10.0	10.0	10.0	10.0	10.0	10.0	10.0	10.0	10.0	10.0
Indicator value	1.4	2.2	1.5	2.5	3.5	0.8	0.9	4.1	1.0	0.9	1.4	2.0

Licensee Comments: none

Drill/Exercise Performance



Thresholds: White < 90.0% Yellow < 70.0%

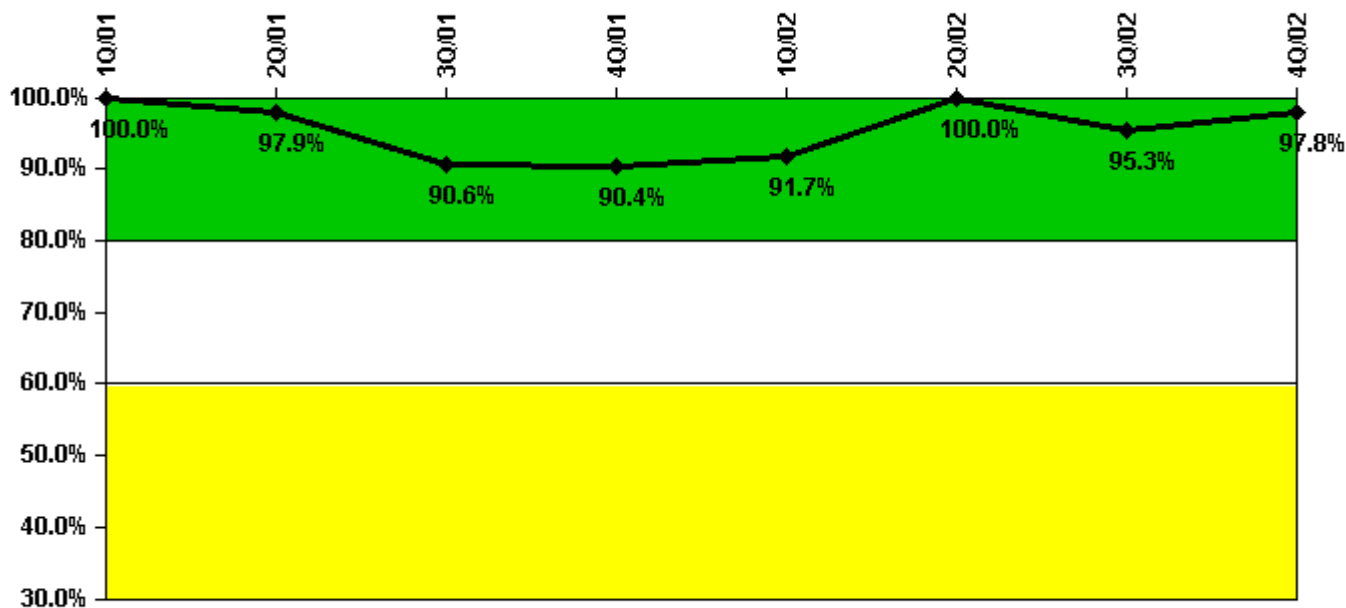
Notes

Drill/Exercise Performance	1Q/01	2Q/01	3Q/01	4Q/01	1Q/02	2Q/02	3Q/02	4Q/02
Successful opportunities	25.0	56.0	8.0	0	5.0	5.0	7.0	19.0
Total opportunities	26.0	58.0	11.0	0	6.0	6.0	7.0	23.0
Indicator value	96.0%	95.7%	95.3%	95.7%	93.7%	92.7%	93.1%	91.2%

Licensee Comments:

3Q/02: A review of third quarter 2002 data determined that a notification had been incorrectly counted as a failure. There was not a notification opportunity during the simulator dynamic, therefore there was not a notification failure. The data was revised to include one classification opportunity and one classification success.

ERO Drill Participation



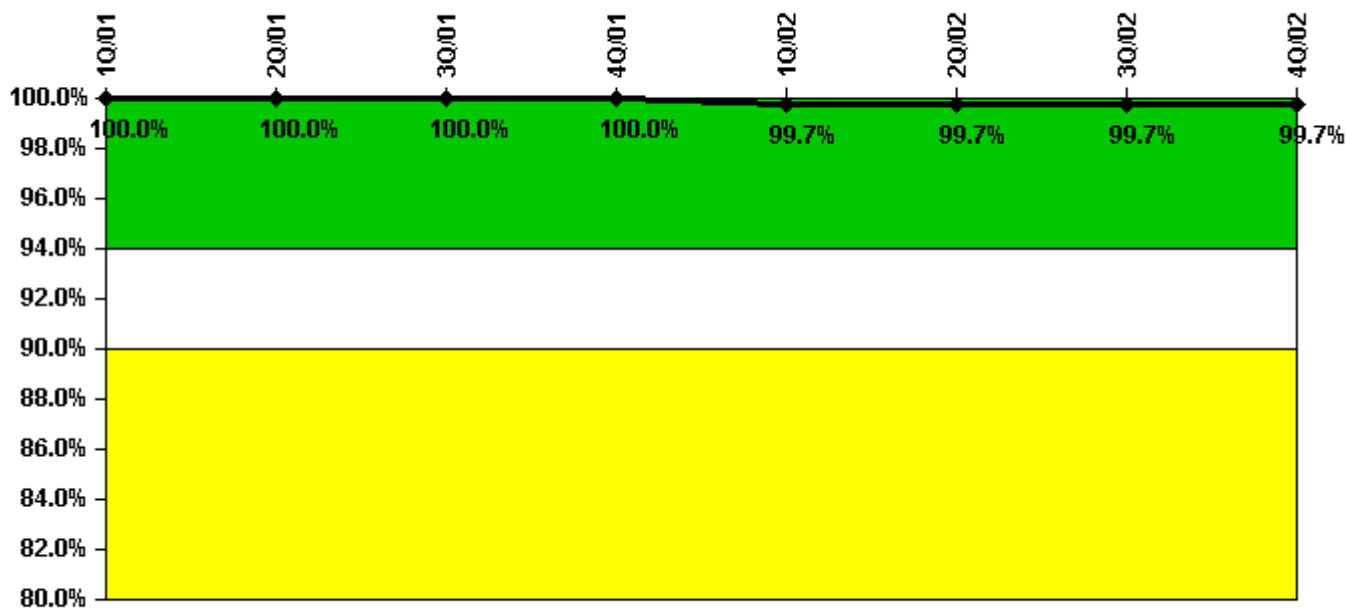
Thresholds: White < 80.0% Yellow < 60.0%

Notes

ERO Drill Participation	1Q/01	2Q/01	3Q/01	4Q/01	1Q/02	2Q/02	3Q/02	4Q/02
Participating Key personnel	39.0	47.0	48.0	47.0	44.0	43.0	41.0	44.0
Total Key personnel	39.0	48.0	53.0	52.0	48.0	43.0	43.0	45.0
Indicator value	100.0%	97.9%	90.6%	90.4%	91.7%	100.0%	95.3%	97.8%

Licensee Comments: none

Alert & Notification System



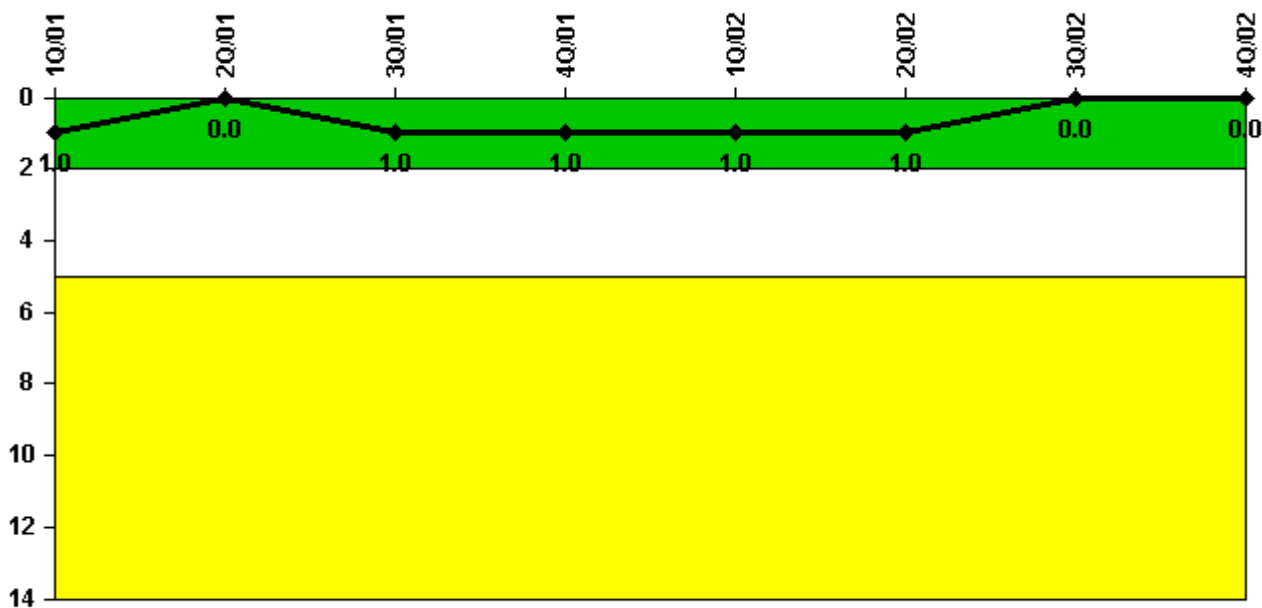
Thresholds: White < 94.0% Yellow < 90.0%

Notes

Alert & Notification System	1Q/01	2Q/01	3Q/01	4Q/01	1Q/02	2Q/02	3Q/02	4Q/02
Successful siren-tests	78	78	78	78	77	78	78	78
Total sirens-tests	78	78	78	78	78	78	78	78
Indicator value	100.0%	100.0%	100.0%	100.0%	99.7%	99.7%	99.7%	99.7%

Licensee Comments: none

Occupational Exposure Control Effectiveness



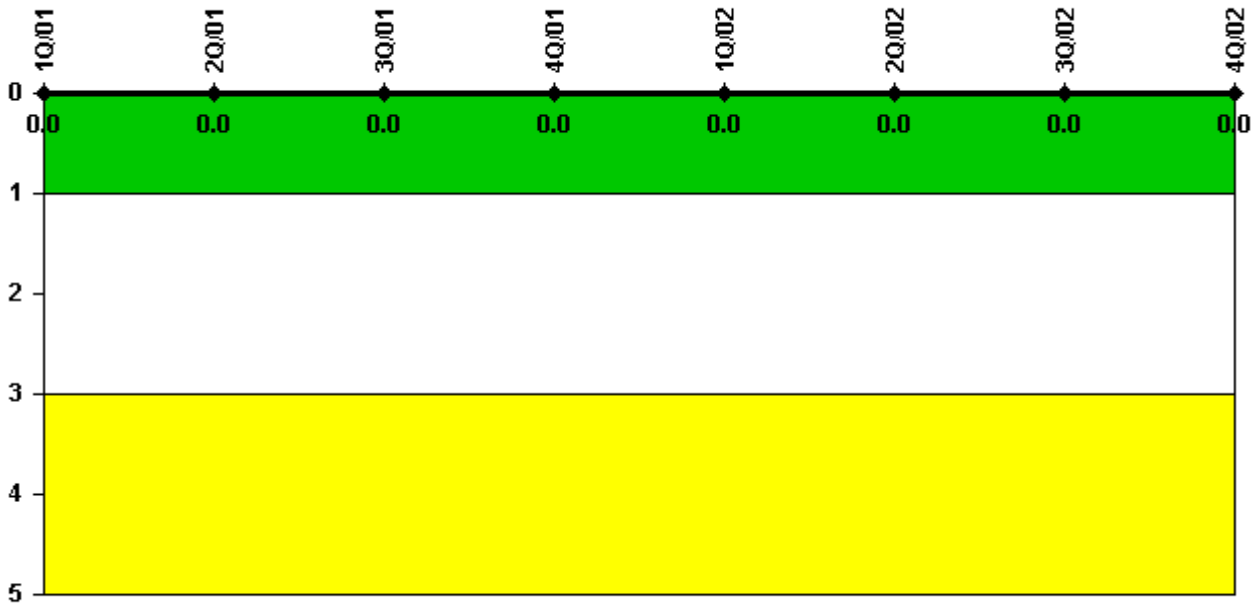
Thresholds: White > 2.0 Yellow > 5.0

Notes

Occupational Exposure Control Effectiveness	1Q/01	2Q/01	3Q/01	4Q/01	1Q/02	2Q/02	3Q/02	4Q/02
High radiation area occurrences	0	0	1	0	0	0	0	0
Very high radiation area occurrences	0	0	0	0	0	0	0	0
Unintended exposure occurrences	0	0	0	0	0	0	0	0
Indicator value	1	0	1	1	1	1	0	0

Licensee Comments: none

RETS/ODCM Radiological Effluent



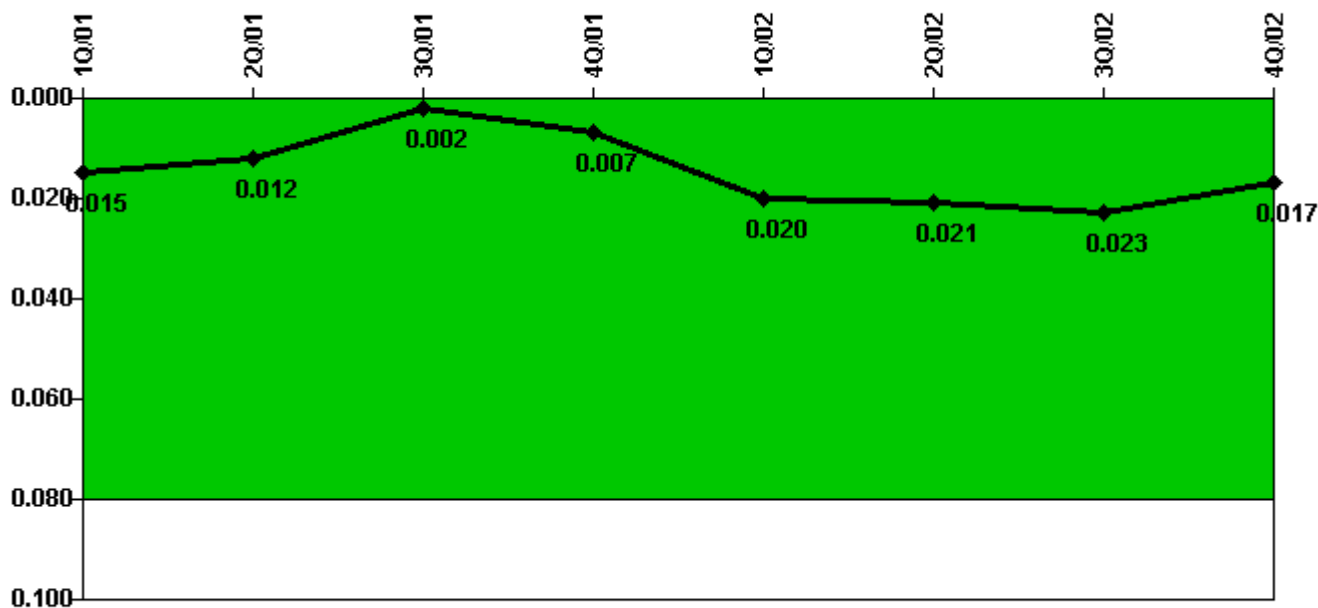
Thresholds: White > 1.0 Yellow > 3.0

Notes

RETS/ODCM Radiological Effluent	1Q/01	2Q/01	3Q/01	4Q/01	1Q/02	2Q/02	3Q/02	4Q/02
RETS/ODCM occurrences	0	0	0	0	0	0	0	0
Indicator value	0	0	0	0	0	0	0	0

Licensee Comments: none

Protected Area Security Performance Index



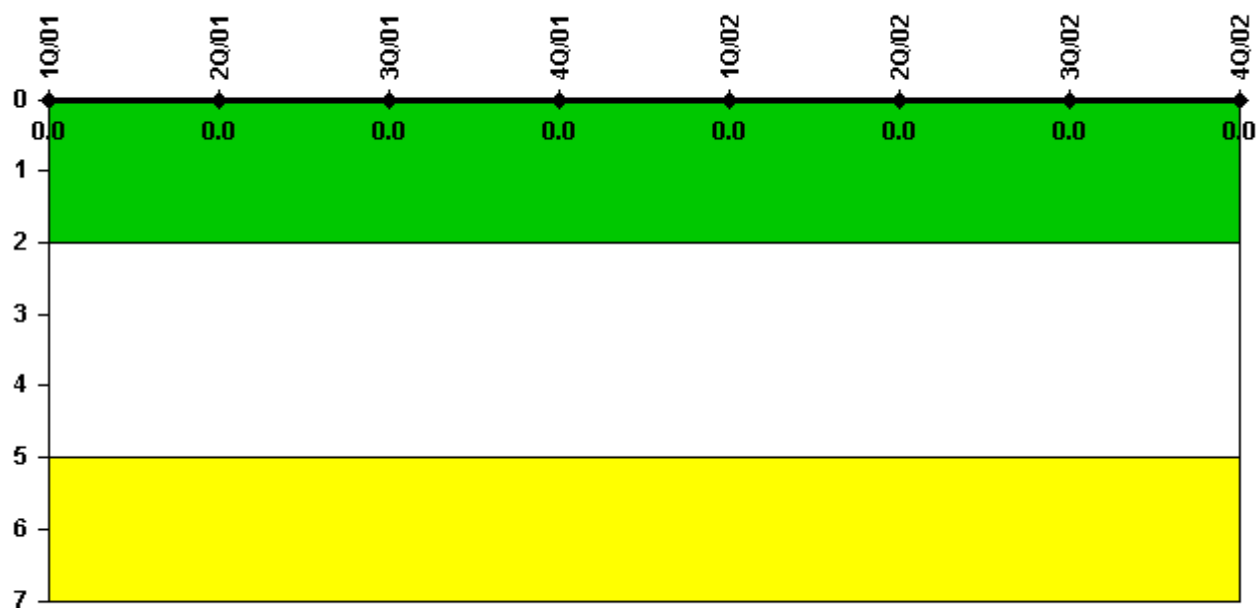
Thresholds: White > 0.080

Notes

Protected Area Security Performance Index	1Q/01	2Q/01	3Q/01	4Q/01	1Q/02	2Q/02	3Q/02	4Q/02
IDS compensatory hours	0.50	9.70	1.70	113.70	227.80	19.20	41.90	0
CCTV compensatory hours	0	0	0	0	0	0	0	2.7
IDS normalization factor	1.00	1.00	1.00	1.00	1.00	1.00	1.00	1.00
CCTV normalization factor	1.0	1.0	1.0	1.0	1.0	1.0	1.0	1.0
Index Value	0.015	0.012	0.002	0.007	0.020	0.021	0.023	0.017

Licensee Comments: none

Personnel Screening Program



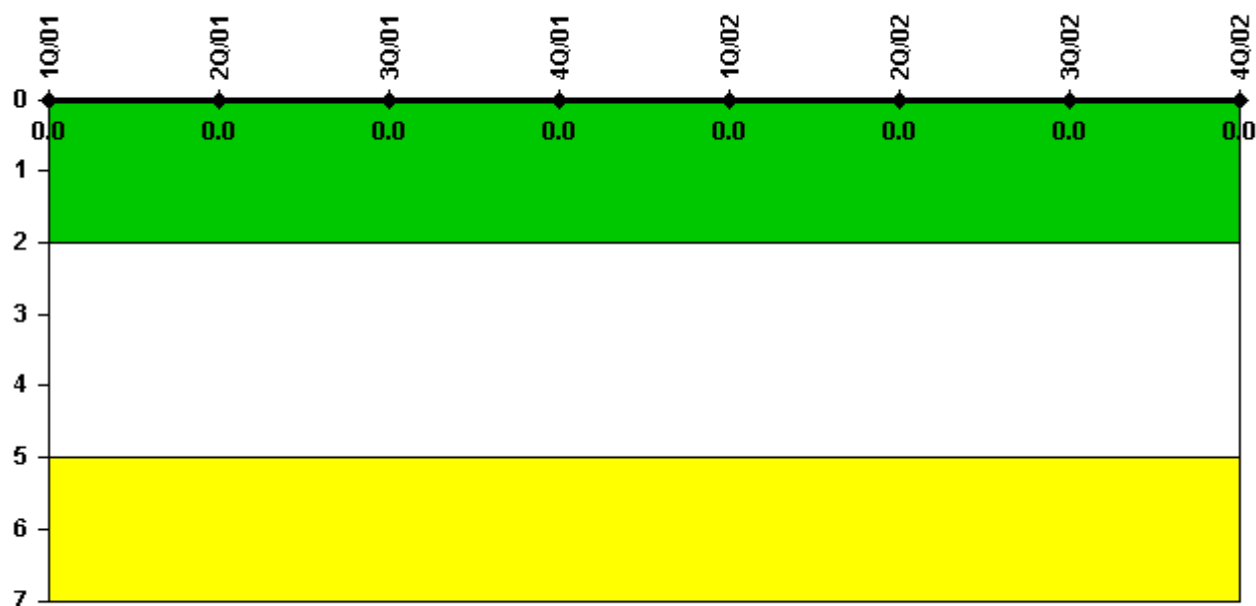
Thresholds: White > 2.0 Yellow > 5.0

Notes

Personnel Screening Program	1Q/01	2Q/01	3Q/01	4Q/01	1Q/02	2Q/02	3Q/02	4Q/02
Program failures	0	0	0	0	0	0	0	0
Indicator value	0	0	0	0	0	0	0	0

Licensee Comments: none

FFD/Personnel Reliability



Thresholds: White > 2.0 Yellow > 5.0

Notes

FFD/Personnel Reliability	1Q/01	2Q/01	3Q/01	4Q/01	1Q/02	2Q/02	3Q/02	4Q/02
Program Failures	0	0	0	0	0	0	0	0
Indicator value	0	0	0	0	0	0	0	0

Licensee Comments: none

▲ [PI Summary](#) | [Inspection Findings Summary](#) | [Reactor Oversight Process](#)

Last Modified: January 30, 2003