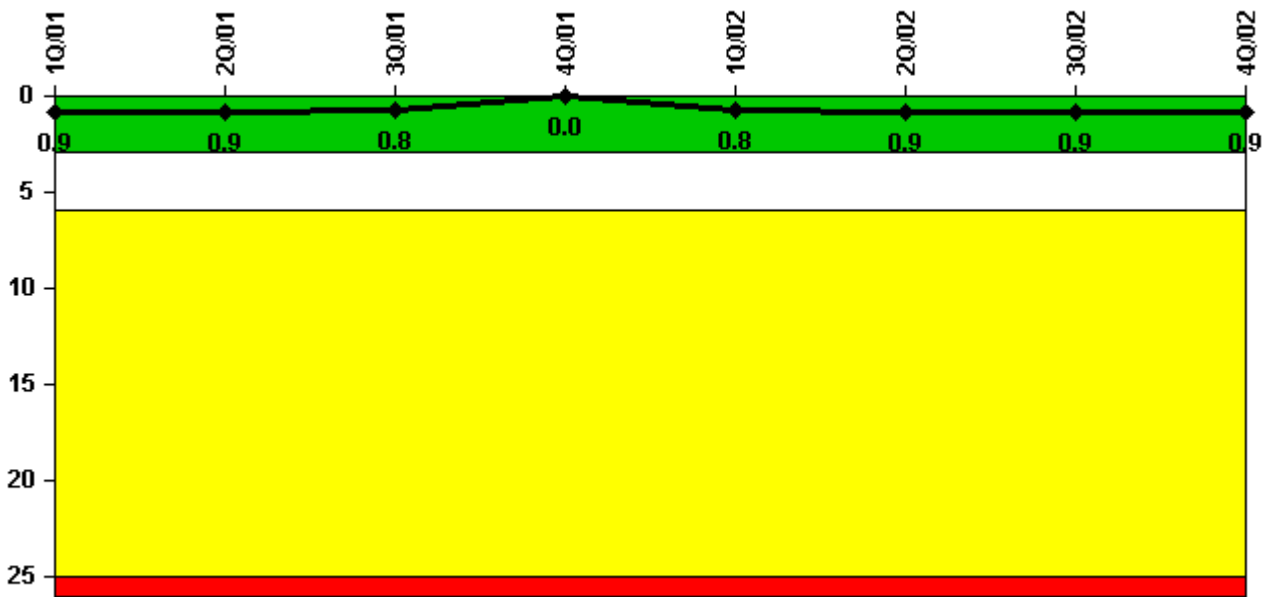


Ginna

4Q/2002 Performance Indicators

Licensee's General Comments: none

Unplanned Scrams per 7000 Critical Hrs



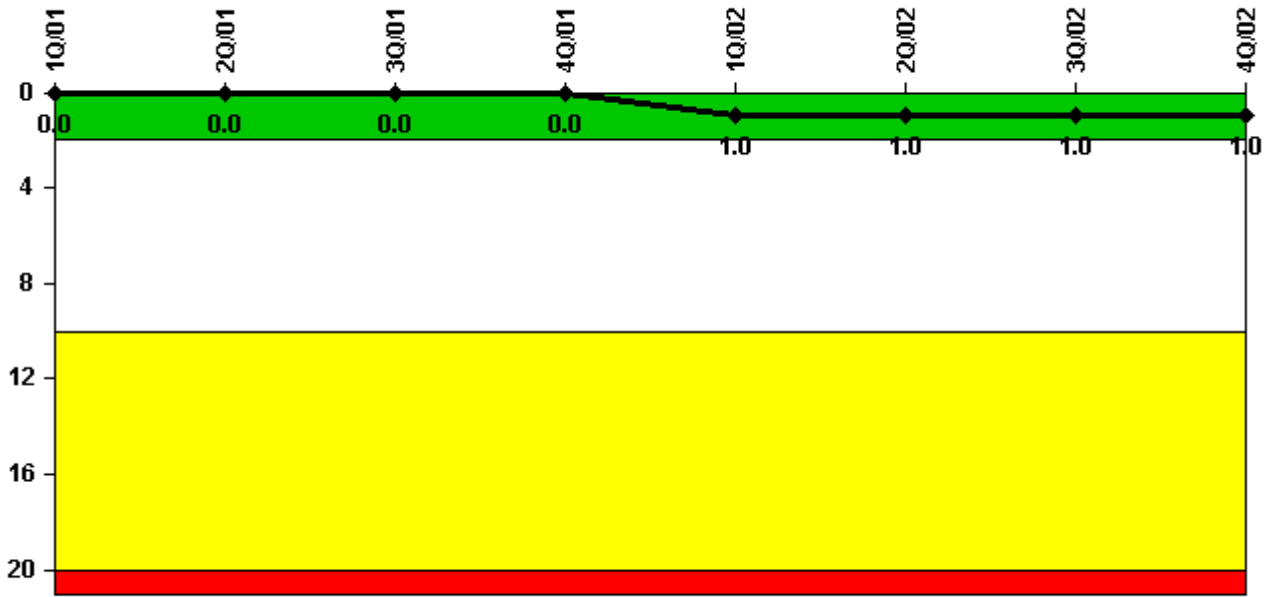
Thresholds: White > 3.0 Yellow > 6.0 Red > 25.0

Notes

Unplanned Scrams per 7000 Critical Hrs	1Q/01	2Q/01	3Q/01	4Q/01	1Q/02	2Q/02	3Q/02	4Q/02
Unplanned scrams	0	0	0	0	1.0	0	0	0
Critical hours	2160.0	2183.0	2208.0	2209.0	1810.8	1766.9	2208.0	2209.0
Indicator value	0.9	0.9	0.8	0	0.8	0.9	0.9	0.9

Licensee Comments: none

Scrams with Loss of Normal Heat Removal



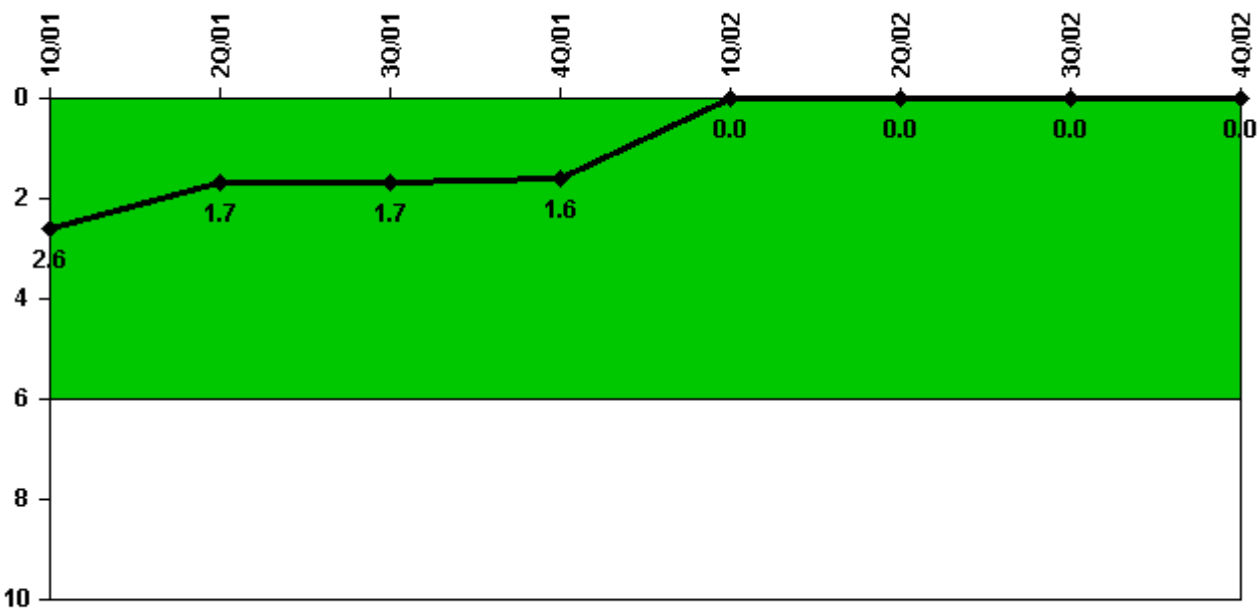
Thresholds: White > 2.0 Yellow > 10.0 Red > 20.0

Notes

Scrams with Loss of Normal Heat Removal	1Q/01	2Q/01	3Q/01	4Q/01	1Q/02	2Q/02	3Q/02	4Q/02
Scrams	0	0	0	0	1.0	0	0	0
Indicator value	0	0	0	0	1.0	1.0	1.0	1.0

Licensee Comments: none

Unplanned Power Changes per 7000 Critical Hrs



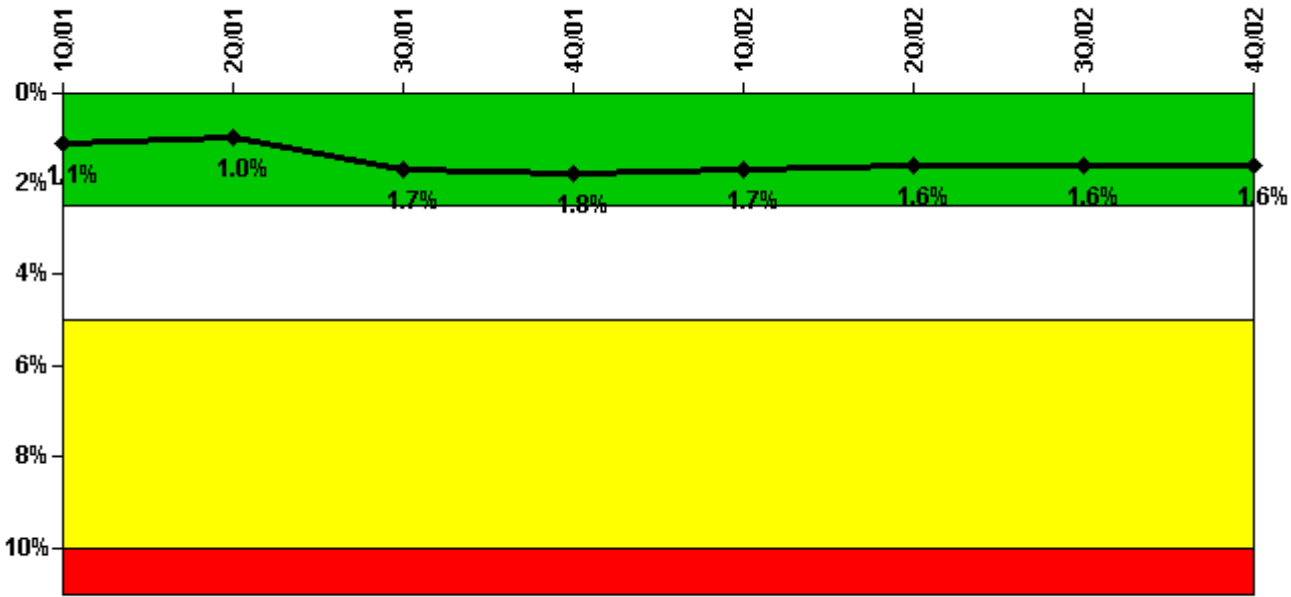
Thresholds: White > 6.0

Notes

Unplanned Power Changes per 7000 Critical Hrs	1Q/01	2Q/01	3Q/01	4Q/01	1Q/02	2Q/02	3Q/02	4Q/02
Unplanned power changes	2.0	0	0	0	0	0	0	0
Critical hours	2160.0	2183.0	2208.0	2209.0	1810.8	1766.9	2208.0	2209.0
Indicator value	2.6	1.7	1.7	1.6	0	0	0	0

Licensee Comments: none

Safety System Unavailability, Emergency AC Power



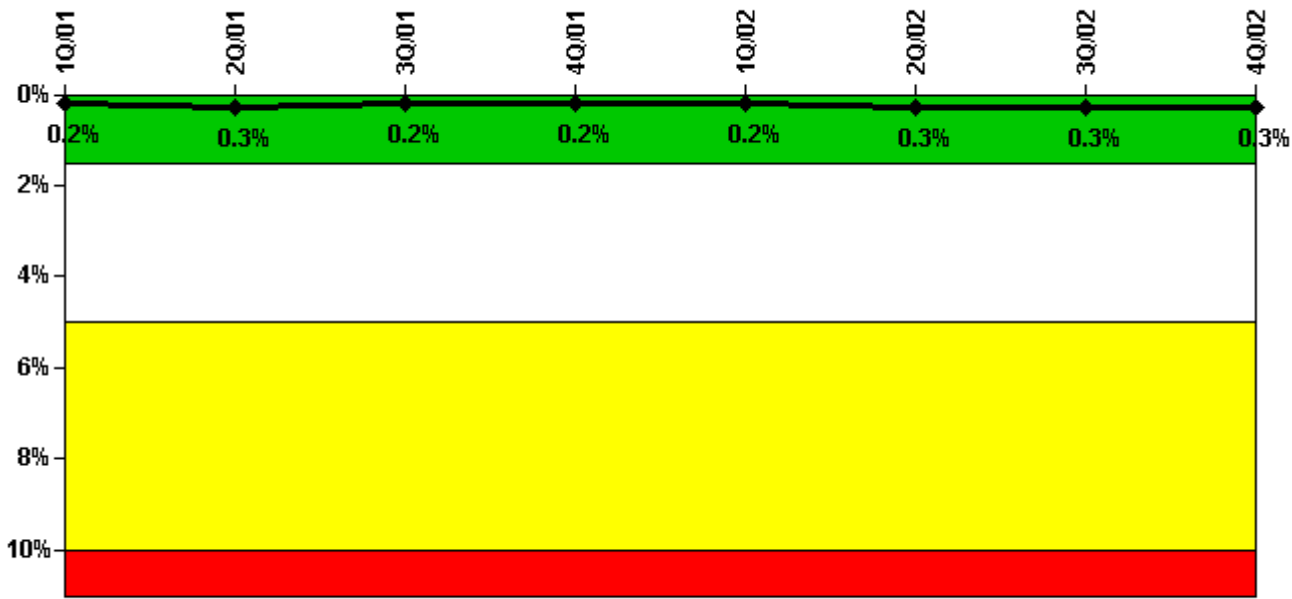
Thresholds: White > 2.5% Yellow > 5.0% Red > 10.0%

Notes

Safety System Unavailability, Emergency AC Power	1Q/01	2Q/01	3Q/01	4Q/01	1Q/02	2Q/02	3Q/02	4Q/02
Train 1								
Planned unavailable hours	7.00	9.00	7.40	36.70	7.10	12.60	23.60	6.30
Unplanned unavailable hours	31.90	0.20	20.80	0	0	0	0	0
Fault exposure hours	0	0	0	0	0	0	0	0
Effective Reset hours	0	0	0	0	0	0	0	0
Required hours	2160.00	2183.00	2208.00	2209.00	2160.00	2183.00	2208.00	2209.00
Train 2								
Planned unavailable hours	19.70	7.20	7.50	34.10	15.30	7.90	4.30	17.60
Unplanned unavailable hours	0	2.20	16.30	9.30	0	0	8.90	0
Fault exposure hours	0	0	334.12	0	0	0	0	0
Effective Reset hours	0	0	0	0	0	0	0	0
Required hours	2160.00	2183.00	2208.00	2209.00	2160.00	2183.00	2208.00	2209.00
Indicator value	1.1%	1.0%	1.7%	1.8%	1.7%	1.6%	1.6%	1.6%

Licensee Comments: none

Safety System Unavailability, High Pressure Injection System (HPSI)



Thresholds: White > 1.5% Yellow > 5.0% Red > 10.0%

Notes

Safety System Unavailability, High Pressure Injection System (HPSI)	1Q/01	2Q/01	3Q/01	4Q/01	1Q/02	2Q/02	3Q/02	4Q/02
Train 1								
Planned unavailable hours	18.25	0	0	4.80	1.90	2.40	0	5.00
Unplanned unavailable hours	0	0	0	0	0	0	0	0
Fault exposure hours	0	0	0	0	0	0	0	0
Effective Reset hours	0	0	0	0	0	0	0	0
Required hours	2160.00	2183.00	2208.00	2209.00	1872.50	1803.20	2208.00	2209.00
Train 2								
Planned unavailable hours	0	0	0	1.73	6.40	8.03	0	0
Unplanned unavailable hours	7.63	16.70	0	0	0	0	0	0
Fault exposure hours	0	0	0	0	0	0	0	0
Effective Reset hours	0	0	0	0	0	0	0	0
Required hours	2160.00	2183.00	2208.00	2209.00	1872.50	1803.20	2208.00	2209.00
Train 3								
Planned unavailable hours	10.05	11.30	0	2.15	5.70	18.50	0	0
Unplanned unavailable hours	0	0	0	0	0	0	0	0
Fault exposure hours	0	0	0	0	0	0	0	0
Effective Reset hours	0	0	0	0	0	0	0	0
Required hours	2160.00	2183.00	2208.00	2209.00	1872.50	1803.20	2208.00	2209.00
Indicator value	0.2%	0.3%	0.2%	0.2%	0.2%	0.3%	0.3%	0.3%

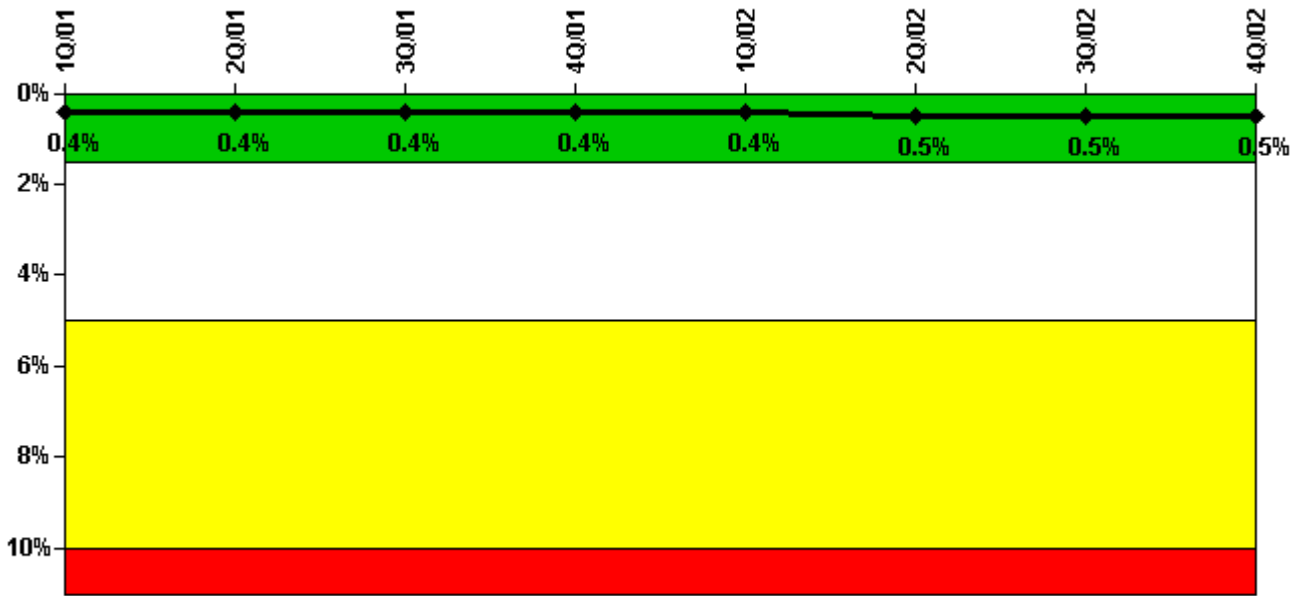
Licensee Comments: none

Required hours	2160.00	2183.00	2208.00	2209.00	1836.68	1803.20	2208.00	2209.00
Indicator value	1.2%	1.1%	1.0%	0.9%	1.1%	1.0%	0.9%	0.8%

Licensee Comments:

2Q/02: Planned unavailable hours for May for Train 5 "D" AFW corrected from 6.6 hours to 28.4 hours with 4th Quarter 2002 submittal. Error in data was found on 10/28/02. No change in PI color; no threshold crossed due to error.

Safety System Unavailability, Residual Heat Removal System



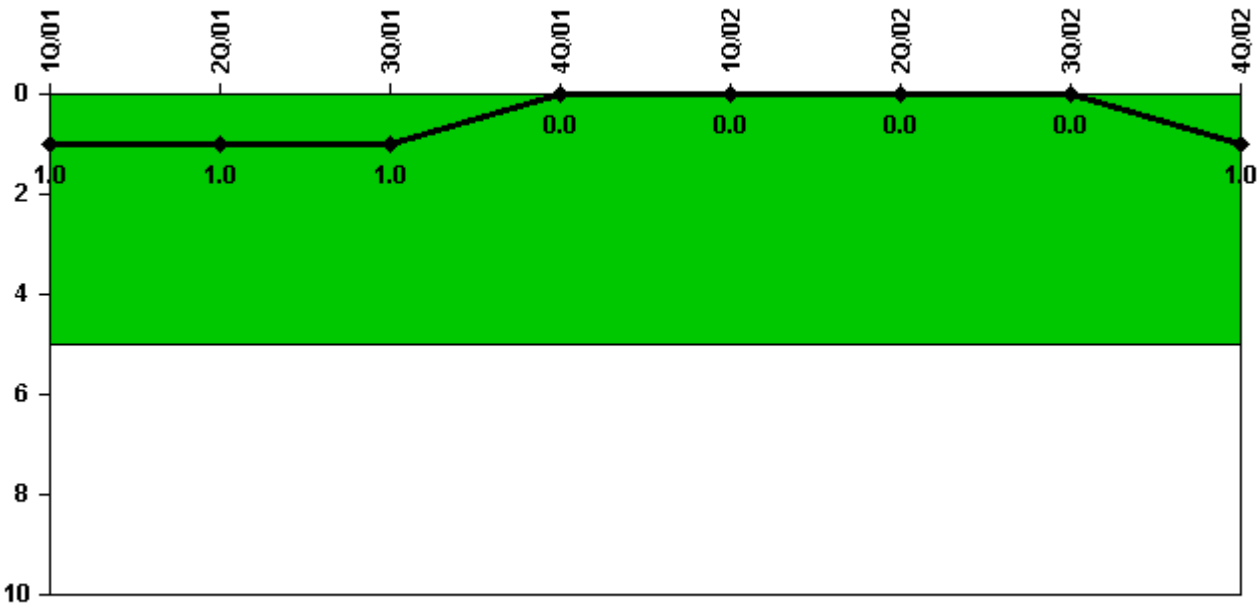
Thresholds: White > 1.5% Yellow > 5.0% Red > 10.0%

Notes

Safety System Unavailability, Residual Heat Removal System	1Q/01	2Q/01	3Q/01	4Q/01	1Q/02	2Q/02	3Q/02	4Q/02
Train 1								
Planned unavailable hours	9.58	14.90	6.50	0	5.60	32.50	7.90	15.50
Unplanned unavailable hours	0	0	0	0	0	0	0	0
Fault exposure hours	0	0	0	0	0	0	0	0
Effective Reset hours	0	0	0	0	0	0	0	0
Required hours	2160.00	2183.00	2208.00	2209.00	2034.25	2139.25	2208.00	2209.00
Train 2								
Planned unavailable hours	38.20	5.40	0	14.90	0.20	2.60	0	10.60
Unplanned unavailable hours	0	0	0	0	0	0	0	0
Fault exposure hours	0	0	0	0	0	0	0	0
Effective Reset hours	0	0	0	0	0	0	0	0
Required hours	2160.00	2183.00	2208.00	2209.00	2034.25	1967.00	2208.00	2209.00
Indicator value	0.4%	0.4%	0.4%	0.4%	0.4%	0.5%	0.5%	0.5%

Licensee Comments: none

Safety System Functional Failures (PWR)



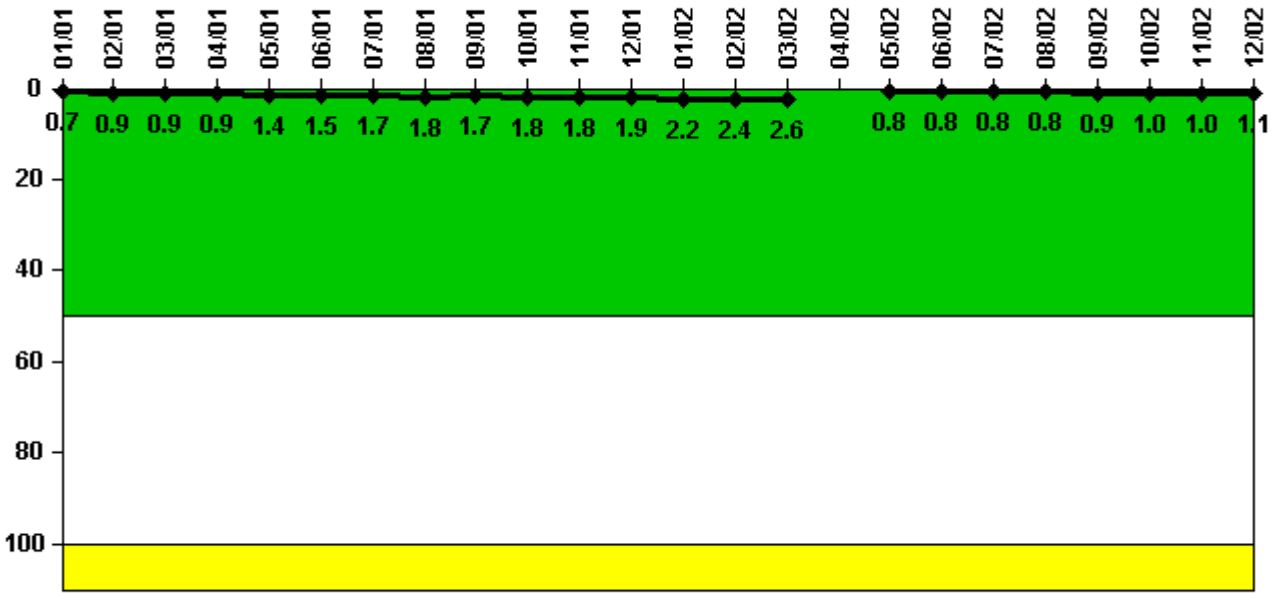
Thresholds: White > 5.0

Notes

Safety System Functional Failures (PWR)	1Q/01	2Q/01	3Q/01	4Q/01	1Q/02	2Q/02	3Q/02	4Q/02
Safety System Functional Failures	0	0	0	0	0	0	0	1
Indicator value	1	1	1	0	0	0	0	1

Licensee Comments: none

Reactor Coolant System Activity



Thresholds: White > 50.0 Yellow > 100.0

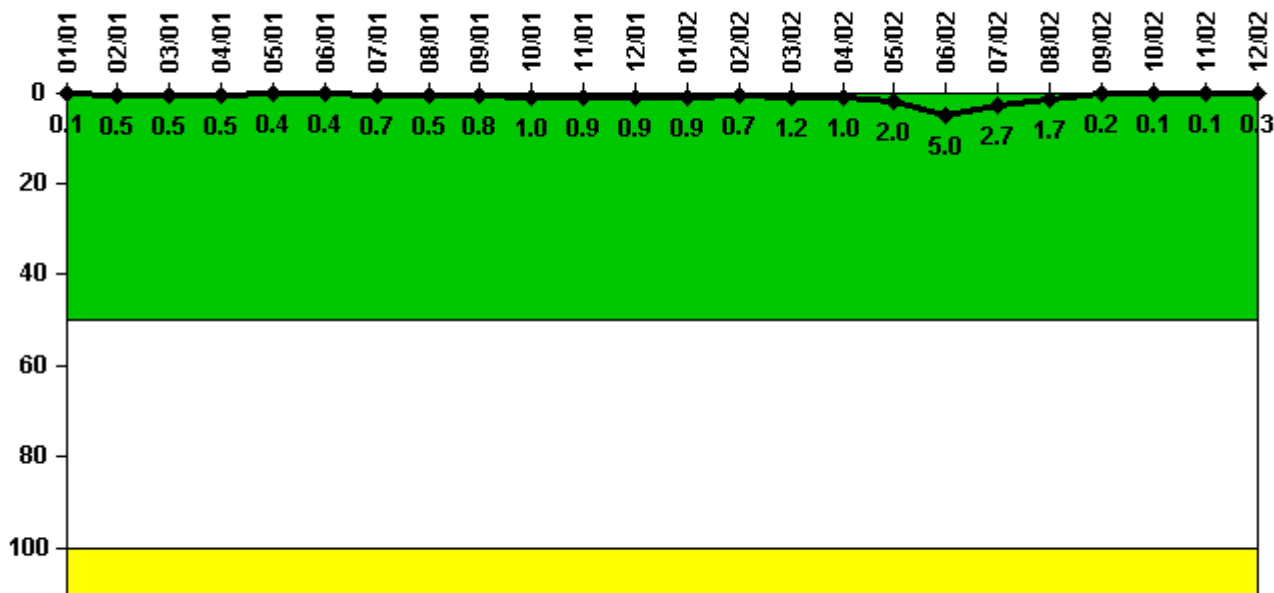
Notes

Reactor Coolant System Activity	1/01	2/01	3/01	4/01	5/01	6/01	7/01	8/01	9/01	10/01	11/01	12/01
Maximum activity	0.007490	0.008610	0.009140	0.009030	0.009120	0.009800	0.010700	0.011500	0.010700	0.011400	0.011800	0.012300
Technical specification limit	1.0	1.0	1.0	1.0	0.6	0.6	0.6	0.6	0.6	0.6	0.6	0.6
Indicator value	0.7	0.9	0.9	0.9	1.4	1.5	1.7	1.8	1.7	1.8	1.8	1.9

Reactor Coolant System Activity	1/02	2/02	3/02	4/02	5/02	6/02	7/02	8/02	9/02	10/02	11/02	12/02
Maximum activity	0.009930	0.010900	0.012000	N/A	0.004830	0.005350	0.005290	0.005390	0.005620	0.006220	0.006230	0.006730
Technical specification limit	0.5	0.5	0.5	0.6	0.6	0.6	0.6	0.6	0.6	0.6	0.6	0.6
Indicator value	2.2	2.4	2.6	N/A	0.8	0.8	0.8	0.8	0.9	1.0	1.0	1.1

Licensee Comments: none

Reactor Coolant System Leakage



Thresholds: White > 50.0 Yellow > 100.0

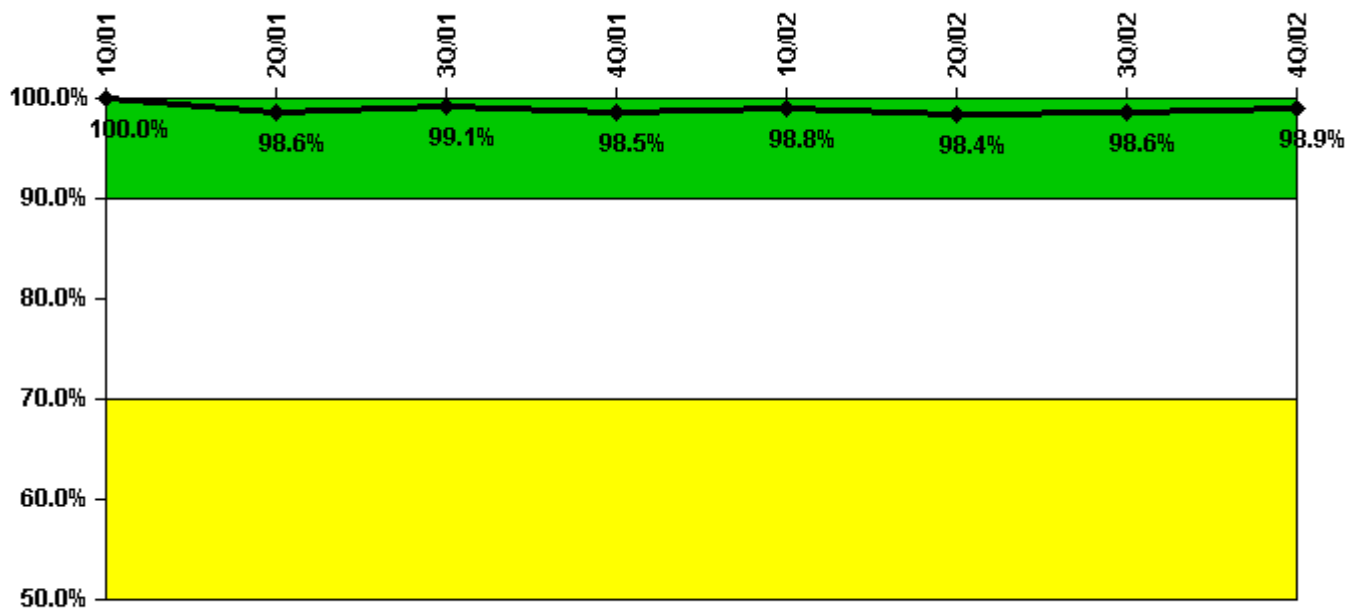
Notes

Reactor Coolant System Leakage	1/01	2/01	3/01	4/01	5/01	6/01	7/01	8/01	9/01	10/01	11/01	12/01
Maximum leakage	0.009	0.045	0.046	0.052	0.038	0.041	0.068	0.054	0.080	0.095	0.089	0.085
Technical specification limit	10.0	10.0	10.0	10.0	10.0	10.0	10.0	10.0	10.0	10.0	10.0	10.0
Indicator value	0.1	0.5	0.5	0.5	0.4	0.4	0.7	0.5	0.8	1.0	0.9	0.9

Reactor Coolant System Leakage	1/02	2/02	3/02	4/02	5/02	6/02	7/02	8/02	9/02	10/02	11/02	12/02
Maximum leakage	0.089	0.067	0.124	0.101	0.202	0.501	0.270	0.168	0.022	0.013	0.008	0.029
Technical specification limit	10.0	10.0	10.0	10.0	10.0	10.0	10.0	10.0	10.0	10.0	10.0	10.0
Indicator value	0.9	0.7	1.2	1.0	2.0	5.0	2.7	1.7	0.2	0.1	0.1	0.3

Licensee Comments: none

Drill/Exercise Performance



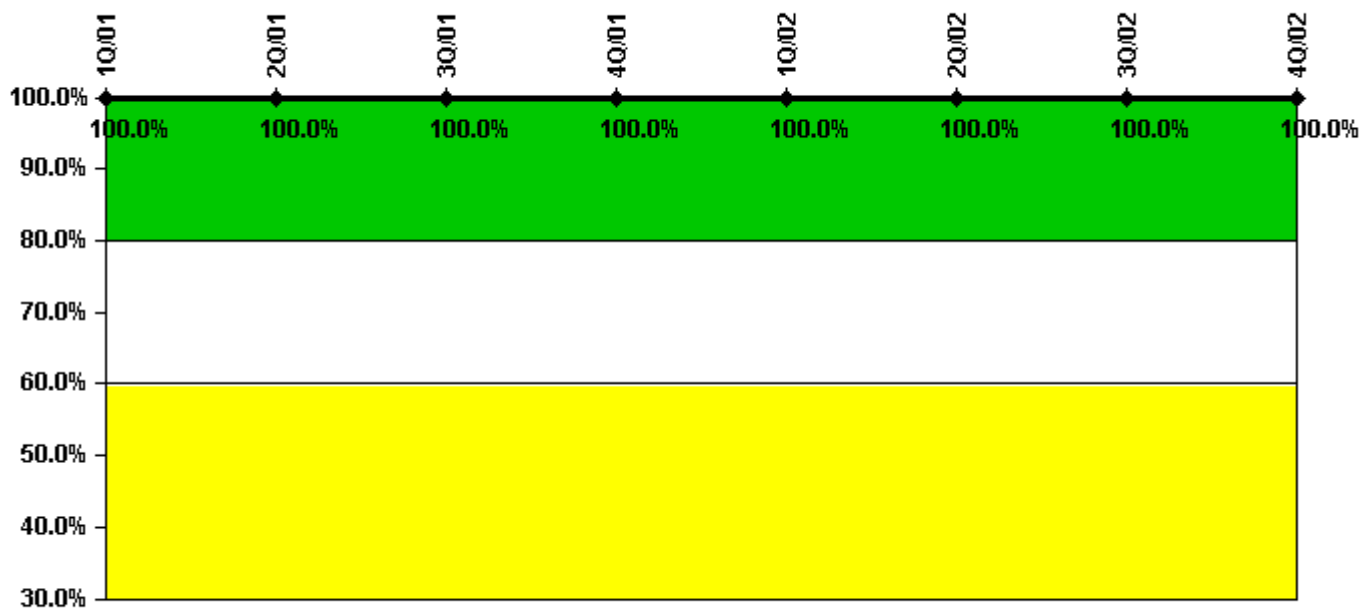
Thresholds: White < 90.0% Yellow < 70.0%

Notes

Drill/Exercise Performance	1Q/01	2Q/01	3Q/01	4Q/01	1Q/02	2Q/02	3Q/02	4Q/02
Successful opportunities	12.0	32.0	39.0	45.0	30.0	22.0	29.0	55.0
Total opportunities	12.0	33.0	39.0	46.0	30.0	23.0	29.0	55.0
Indicator value	100.0%	98.6%	99.1%	98.5%	98.8%	98.4%	98.6%	98.9%

Licensee Comments: none

ERO Drill Participation



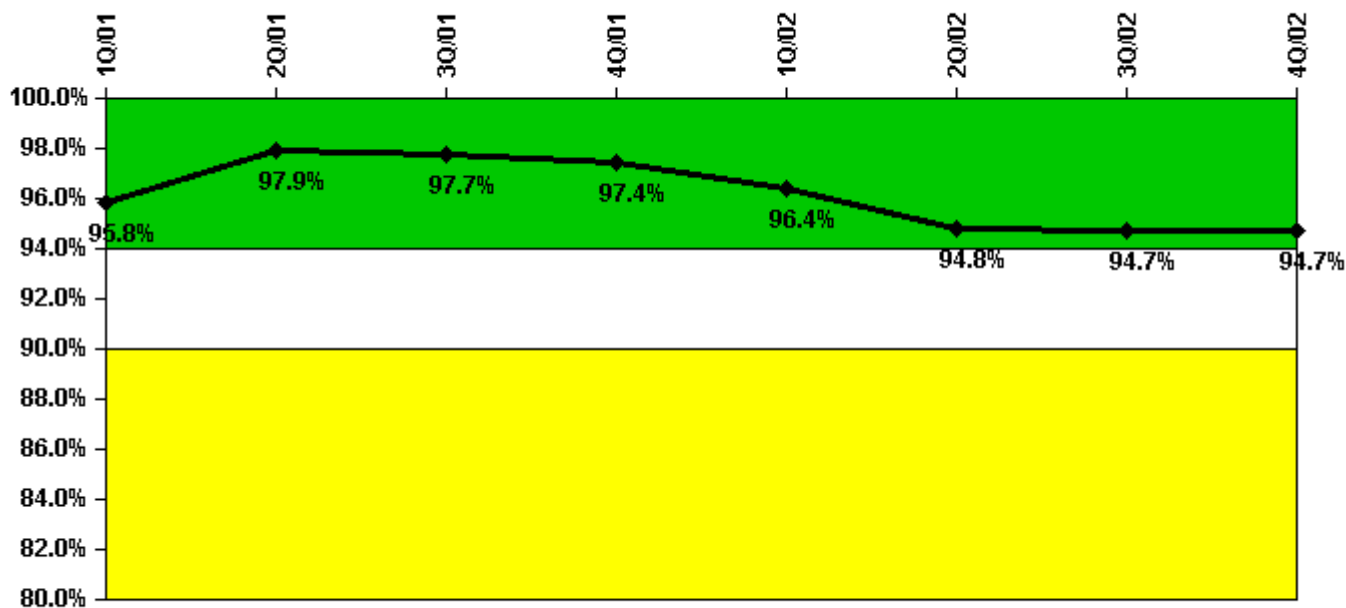
Thresholds: White < 80.0% Yellow < 60.0%

Notes

ERO Drill Participation	1Q/01	2Q/01	3Q/01	4Q/01	1Q/02	2Q/02	3Q/02	4Q/02
Participating Key personnel	71.0	71.0	65.0	65.0	78.0	78.0	78.0	78.0
Total Key personnel	71.0	71.0	65.0	65.0	78.0	78.0	78.0	78.0
Indicator value	100.0%	100.0%	100.0%	100.0%	100.0%	100.0%	100.0%	100.0%

Licensee Comments: none

Alert & Notification System



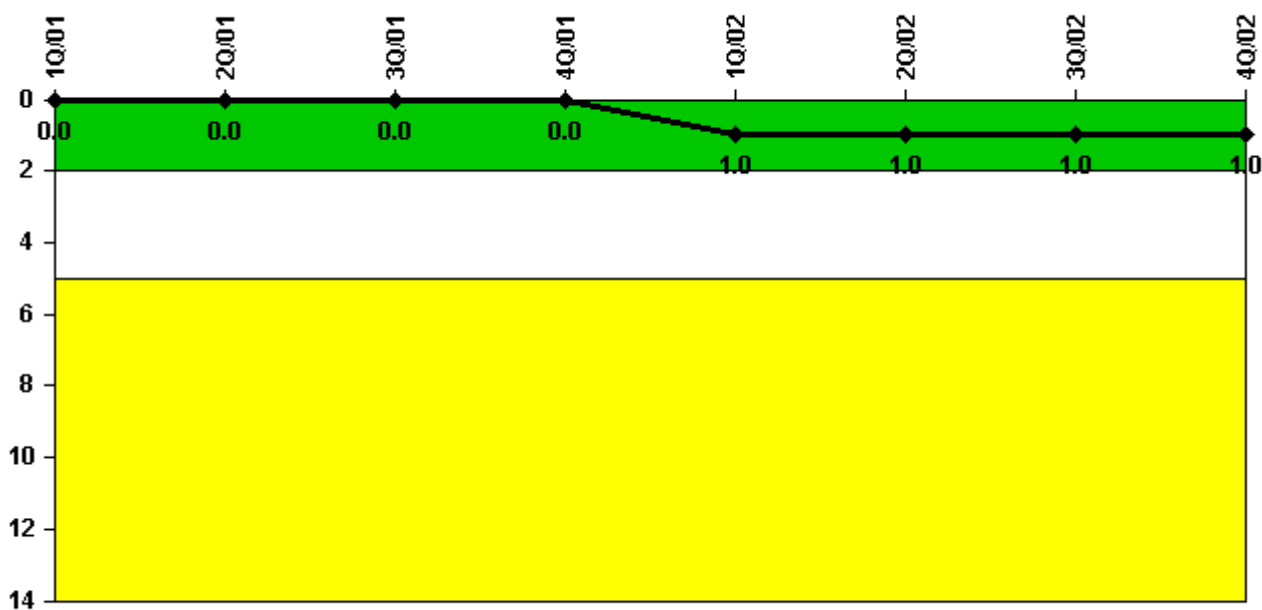
Thresholds: White < 94.0% Yellow < 90.0%

Notes

Alert & Notification System	1Q/01	2Q/01	3Q/01	4Q/01	1Q/02	2Q/02	3Q/02	4Q/02
Successful siren-tests	1139	1188	1125	1130	1094	1111	1122	1220
Total sirens-tests	1152	1248	1152	1152	1152	1248	1152	1248
Indicator value	95.8%	97.9%	97.7%	97.4%	96.4%	94.8%	94.7%	94.7%

Licensee Comments: none

Occupational Exposure Control Effectiveness



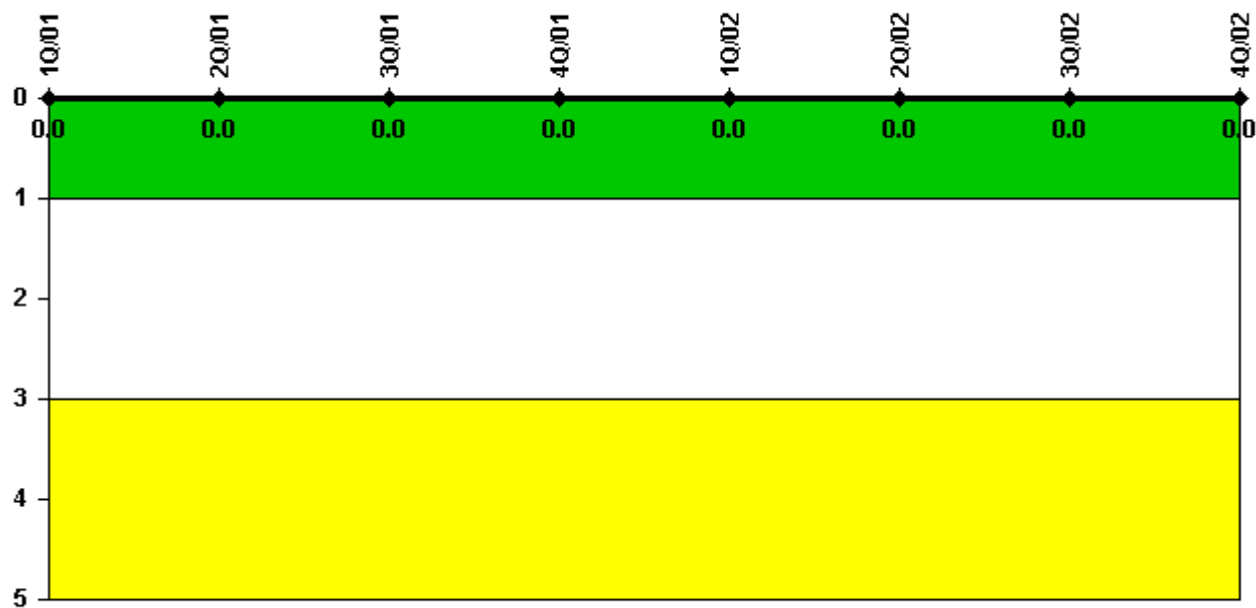
Thresholds: White > 2.0 Yellow > 5.0

Notes

Occupational Exposure Control Effectiveness	1Q/01	2Q/01	3Q/01	4Q/01	1Q/02	2Q/02	3Q/02	4Q/02
High radiation area occurrences	0	0	0	0	1	0	0	0
Very high radiation area occurrences	0	0	0	0	0	0	0	0
Unintended exposure occurrences	0	0	0	0	0	0	0	0
Indicator value	0	0	0	0	1	1	1	1

Licensee Comments: none

RETS/ODCM Radiological Effluent



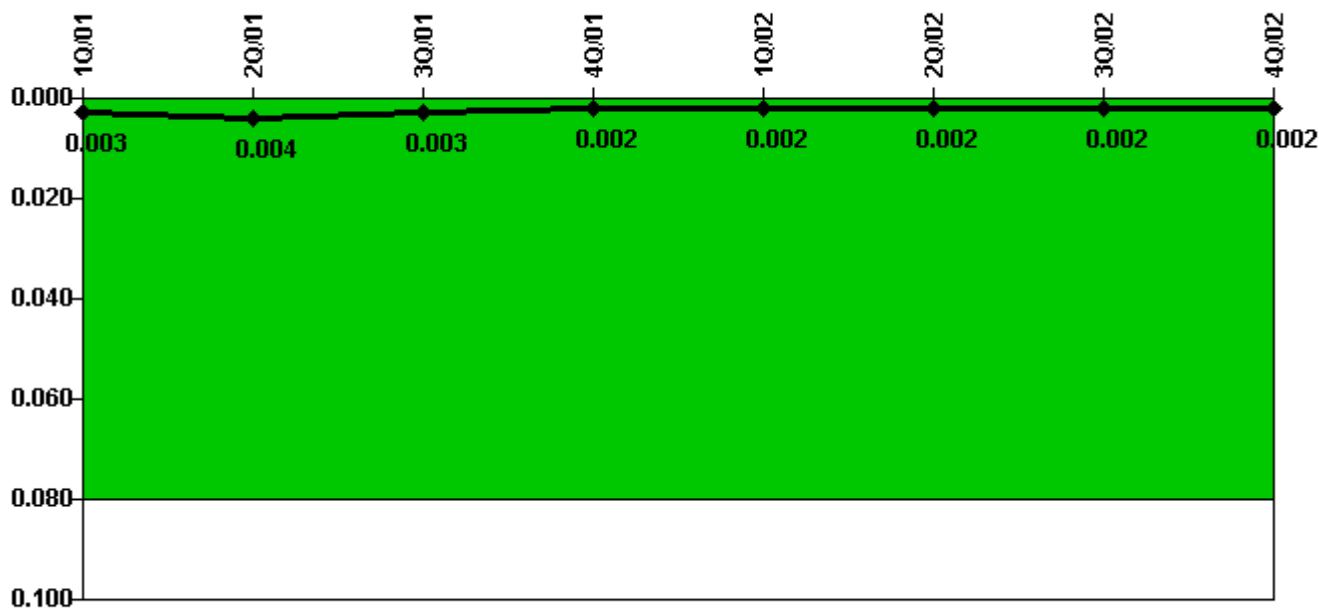
Thresholds: White > 1.0 Yellow > 3.0

Notes

RETS/ODCM Radiological Effluent	1Q/01	2Q/01	3Q/01	4Q/01	1Q/02	2Q/02	3Q/02	4Q/02
RETS/ODCM occurrences	0	0	0	0	0	0	0	0
Indicator value	0	0	0	0	0	0	0	0

Licensee Comments: none

Protected Area Security Performance Index



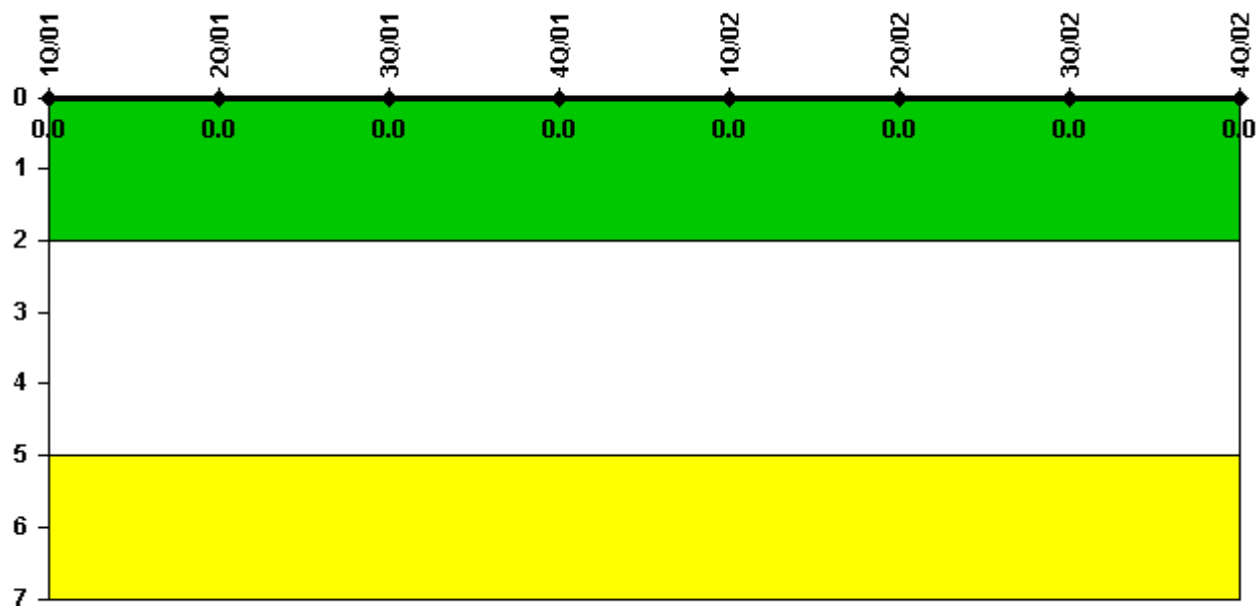
Thresholds: White > 0.080

Notes

Protected Area Security Performance Index	1Q/01	2Q/01	3Q/01	4Q/01	1Q/02	2Q/02	3Q/02	4Q/02
IDS compensatory hours	7.71	15.39	19.53	4.15	9.81	16.64	6.91	4.50
CCTV compensatory hours	0	2.3	0	0.3	0	0	1.8	1.2
IDS normalization factor	1.35	1.35	1.35	1.35	1.35	1.35	1.35	1.35
CCTV normalization factor	1.0	1.0	1.0	1.0	1.0	1.0	1.0	1.0
Index Value	0.003	0.004	0.003	0.002	0.002	0.002	0.002	0.002

Licensee Comments: none

Personnel Screening Program



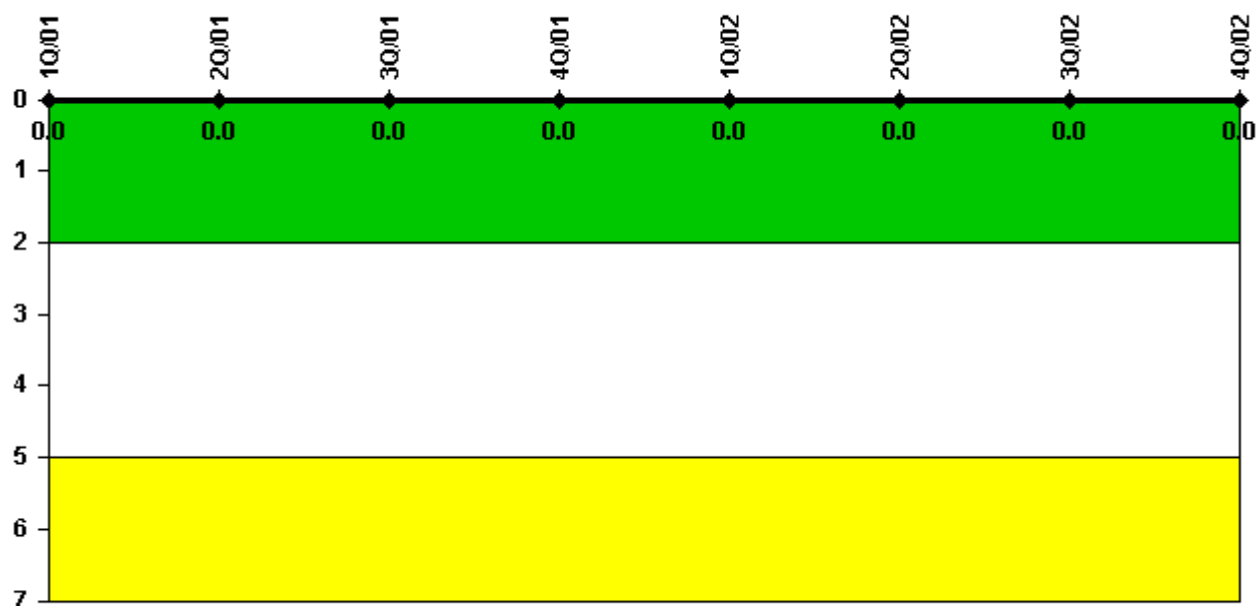
Thresholds: White > 2.0 Yellow > 5.0

Notes

Personnel Screening Program	1Q/01	2Q/01	3Q/01	4Q/01	1Q/02	2Q/02	3Q/02	4Q/02
Program failures	0	0	0	0	0	0	0	0
Indicator value	0	0	0	0	0	0	0	0

Licensee Comments: none

FFD/Personnel Reliability



Thresholds: White > 2.0 Yellow > 5.0

Notes

FFD/Personnel Reliability	1Q/01	2Q/01	3Q/01	4Q/01	1Q/02	2Q/02	3Q/02	4Q/02
Program Failures	0	0	0	0	0	0	0	0
Indicator value	0	0	0	0	0	0	0	0

Licensee Comments: none

▲ [PI Summary](#) | [Inspection Findings Summary](#) | [Reactor Oversight Process](#)

Last Modified: January 30, 2003