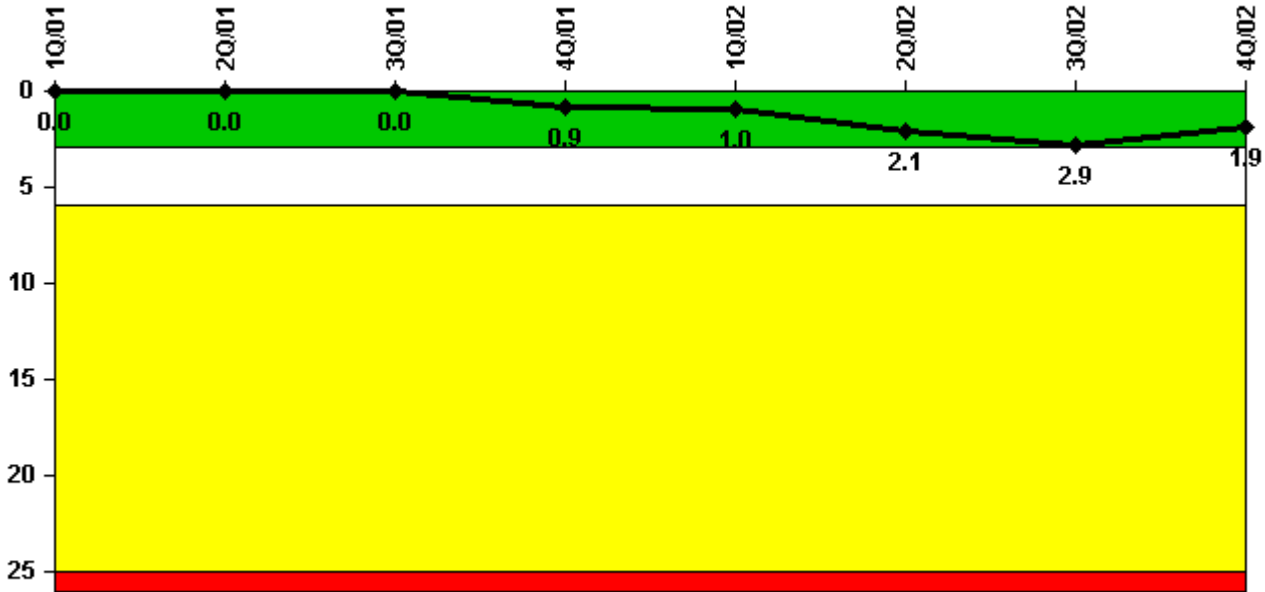


D.C. Cook 2

4Q/2002 Performance Indicators

Licensee's General Comments: none

Unplanned Scrams per 7000 Critical Hrs



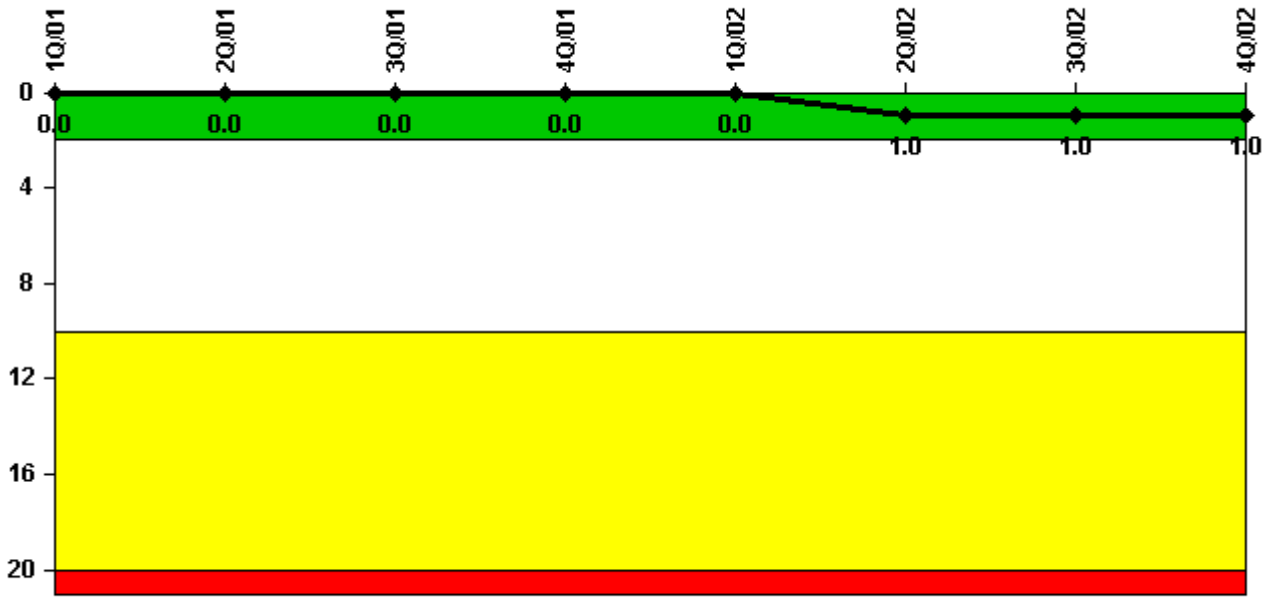
Thresholds: White > 3.0 Yellow > 6.0 Red > 25.0

Notes

Unplanned Scrams per 7000 Critical Hrs	1Q/01	2Q/01	3Q/01	4Q/01	1Q/02	2Q/02	3Q/02	4Q/02
Unplanned scrams	0	0	0	1.0	0	1.0	1.0	0
Critical hours	2076.0	2183.0	1454.0	2008.0	1261.5	1965.5	2027.5	2209.0
Indicator value	0	0	0	0.9	1.0	2.1	2.9	1.9

Licensee Comments: none

Scrams with Loss of Normal Heat Removal



Thresholds: White > 2.0 Yellow > 10.0 Red > 20.0

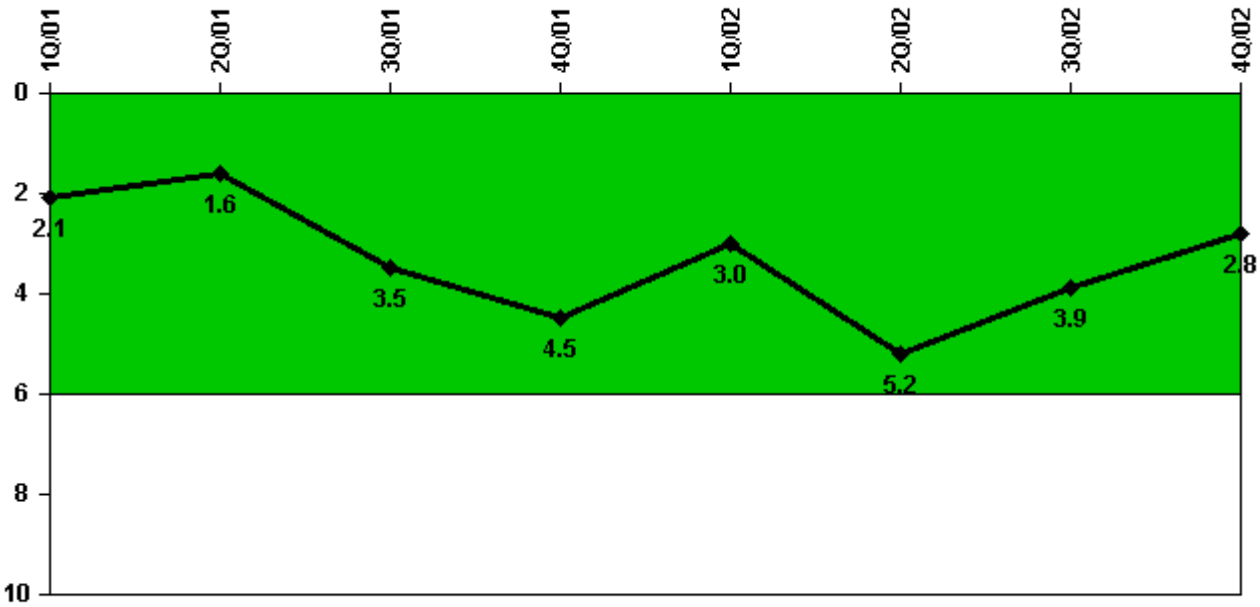
Notes

Scrams with Loss of Normal Heat Removal	1Q/01	2Q/01	3Q/01	4Q/01	1Q/02	2Q/02	3Q/02	4Q/02
Scrams	0	0	0	0	0	1.0	0	0
Indicator value	0	0	0	0	0	1.0	1.0	1.0

Licensee Comments:

4Q/02: Two frequently asked questions have been submitted to address two reactor scrams for which the NRC resident inspection believes should be counted under this reporting criteria.

Unplanned Power Changes per 7000 Critical Hrs



Thresholds: White > 6.0

Notes

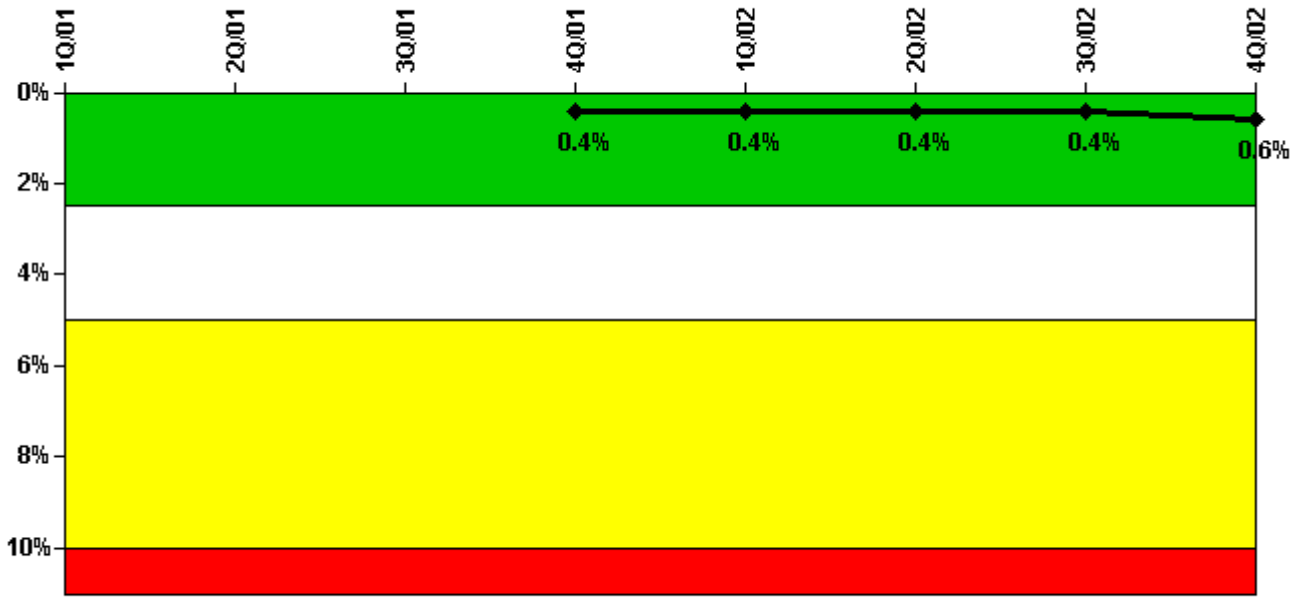
Unplanned Power Changes per 7000 Critical Hrs	1Q/01	2Q/01	3Q/01	4Q/01	1Q/02	2Q/02	3Q/02	4Q/02
Unplanned power changes	2.0	0	2.0	1.0	0	2.0	1.0	0
Critical hours	2076.0	2183.0	1454.0	2008.0	1261.5	1965.5	2027.5	2209.0
Indicator value	2.1	1.6	3.5	4.5	3.0	5.2	3.9	2.8

Licensee Comments:

4Q/02: In the third quarter of 2002 CNP submitted two frequently asked questions (FAQ). Based on review and discussions with the NRC one of the two FAQ was withdrawn and the performance indicator was revised to account for one additional down power in the second quarter of 2002. Resolution of the second FAQ is pending. November 2002 enforcement discretion granted for Technical Specification 3.8.1.1 to facilitate maintenance to the 2 CD emergency diesel generator.

2Q/02: A Technical Specification shutdown was commenced and was terminated when reactor power was approximately 40 percent. The shutdown was required due to visual indications of cracking on a unit 2 station battery causing the battery to be declared inoperable. The shutdown was terminated after receiving a notice of enforcement discretion. Data revised to add one unplanned power change based on the with drawl of a FAQ.

Safety System Unavailability, Emergency AC Power



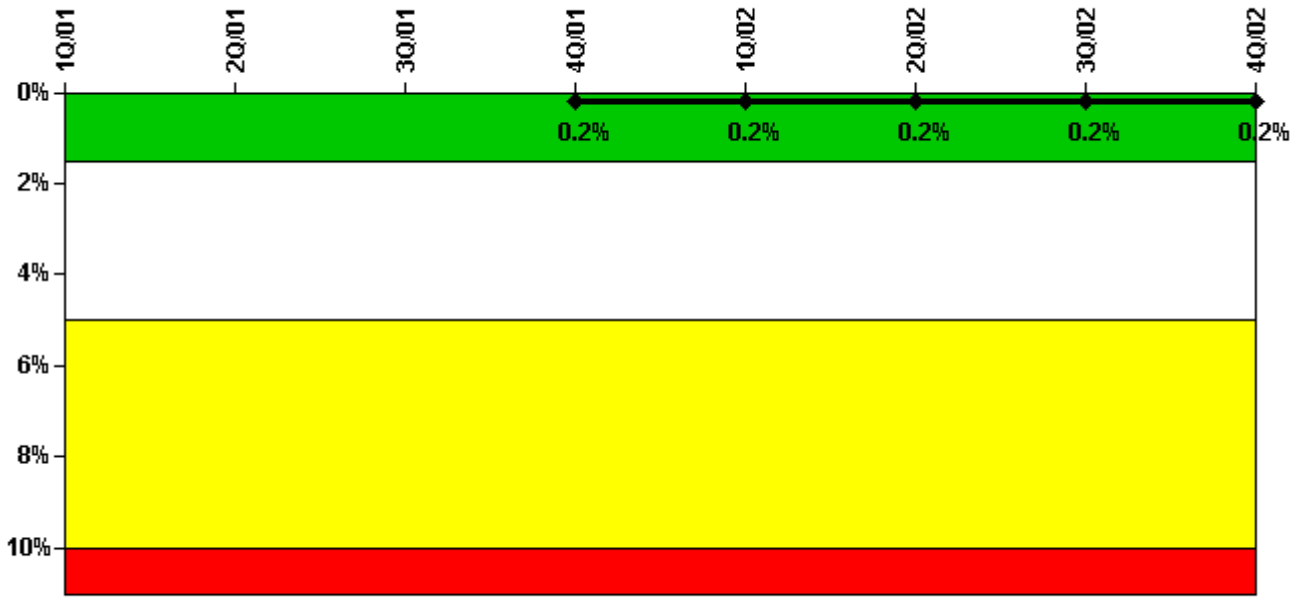
Thresholds: White > 2.5% Yellow > 5.0% Red > 10.0%

Notes

Safety System Unavailability, Emergency AC Power	1Q/01	2Q/01	3Q/01	4Q/01	1Q/02	2Q/02	3Q/02	4Q/02
Train 1								
Planned unavailable hours	0.47	5.20	0.30	1.20	5.38	11.33	0.70	0.70
Unplanned unavailable hours	0	0	0.90	0	0	0	0	81.80
Fault exposure hours	0	0	0	0	0	0	0	0
Effective Reset hours	0	0	0	0	0	0	0	0
Required hours	2160.00	2183.00	2208.00	2209.00	1903.80	2183.00	2208.00	2209.00
Train 2								
Planned unavailable hours	27.25	26.18	0.58	2.22	0.20	14.60	22.90	6.30
Unplanned unavailable hours	0	0	0.90	0	0	0	0	18.80
Fault exposure hours	0	0	0	0	0	0	0	0
Effective Reset hours	0	0	0	0	0	0	0	0
Required hours	2160.00	2183.00	1524.50	2209.00	2064.00	2183.00	2208.00	2209.00
Indicator value				0.4%	0.4%	0.4%	0.4%	0.6%

Licensee Comments: none

Safety System Unavailability, High Pressure Injection System (HPSI)



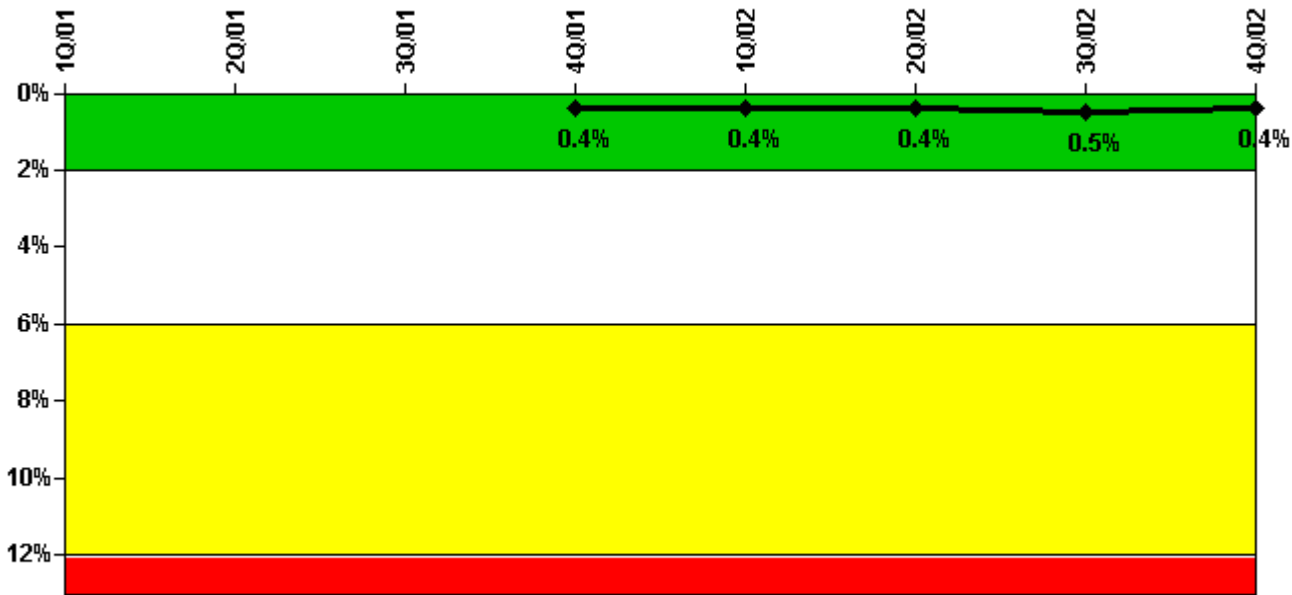
Thresholds: White > 1.5% Yellow > 5.0% Red > 10.0%

Notes

Safety System Unavailability, High Pressure Injection System (HPSI)	1Q/01	2Q/01	3Q/01	4Q/01	1Q/02	2Q/02	3Q/02	4Q/02
Train 1								
Planned unavailable hours	0	0	0	15.45	11.00	0	10.03	0
Unplanned unavailable hours	0	0	0	0	0	0	0	0
Fault exposure hours	0	0	0	0	0	0	0	0
Effective Reset hours	0	0	0	0	0	0	0	0
Required hours	2160.00	2183.00	1524.47	2209.00	1389.76	2183.00	2118.98	2209.00
Train 2								
Planned unavailable hours	16.65	0	20.92	0	1.87	0	11.82	0
Unplanned unavailable hours	0	0	0	0	0	0	0	0
Fault exposure hours	0	0	0	0	0	0	0	0
Effective Reset hours	0	0	0	0	0	0	0	0
Required hours	2160.00	2183.00	1501.97	2209.00	1329.94	2183.00	2208.00	2209.00
Train 3								
Planned unavailable hours	13.83	0	0	0	0	0	0	23.15
Unplanned unavailable hours	0	0	0	0	0	0	0	0
Fault exposure hours	0	0	0	0	0	0	0	0
Effective Reset hours	0	0	0	0	0	0	0	0
Required hours	2160.00	2183.00	1524.47	2209.00	1389.76	2183.00	2118.98	2209.00
Train 4								
Planned unavailable hours	0	5.57	0	12.48	0	5.95	0	0
Unplanned unavailable hours	0	0	0	0	0	0	18.77	0
Fault exposure hours	0	0	0	0	0	0	0	0
Effective Reset hours	0	0	0	0	0	0	0	0
Required hours	2160.00	2183.00	1501.97	2209.00	1329.94	2183.00	2118.98	2209.00
Indicator value				0.2%	0.2%	0.2%	0.2%	0.2%

Licensee Comments: none

Safety System Unavailability, Heat Removal System (AFW)



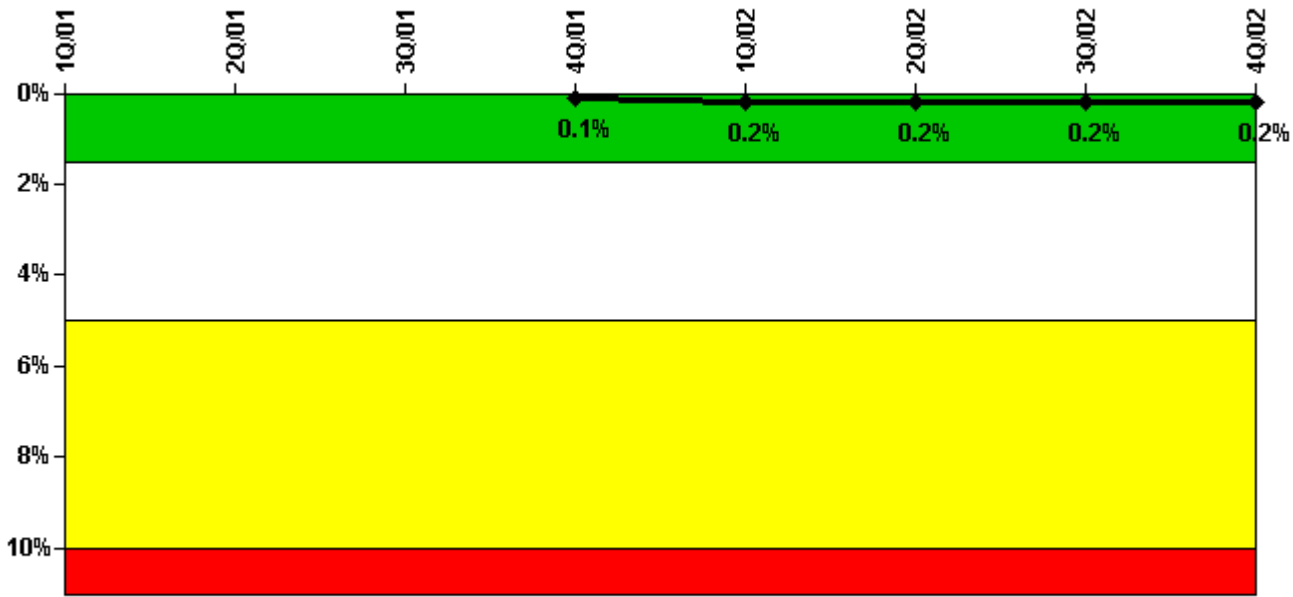
Thresholds: White > 2.0% Yellow > 6.0% Red > 12.0%

Notes

Safety System Unavailability, Heat Removal System (AFW)	1Q/01	2Q/01	3Q/01	4Q/01	1Q/02	2Q/02	3Q/02	4Q/02
Train 1								
Planned unavailable hours	5.58	0	1.32	0	0	0	6.85	0
Unplanned unavailable hours	0	0	0	0	0	0	27.33	0
Fault exposure hours	0	0	0	0	0	0	0	0
Effective Reset hours	0	0	0	0	0	0	0	0
Required hours	2160.00	2183.00	1579.05	2209.00	438.92	2183.00	2118.98	2209.00
Train 2								
Planned unavailable hours	0	1.00	1.85	0	2.52	9.23	9.05	0
Unplanned unavailable hours	0	0	0	0	0	6.08	0	0
Fault exposure hours	0	0	0	0	0	0	0	0
Effective Reset hours	0	0	0	0	0	0	0	0
Required hours	2160.00	2183.00	1579.05	2209.00	438.92	2183.00	2118.98	2209.00
Train 3								
Planned unavailable hours	11.98	0	5.75	0	0	0	23.93	0
Unplanned unavailable hours	0	0	32.39	0	14.79	0	0	0
Fault exposure hours	0	0	0	0	0	0	0	0
Effective Reset hours	0	0	0	0	0	0	0	0
Required hours	2160.00	2183.00	1579.05	2209.00	438.92	2183.00	2118.98	2209.00
Indicator value				0.4%	0.4%	0.4%	0.5%	0.4%

Licensee Comments: none

Safety System Unavailability, Residual Heat Removal System



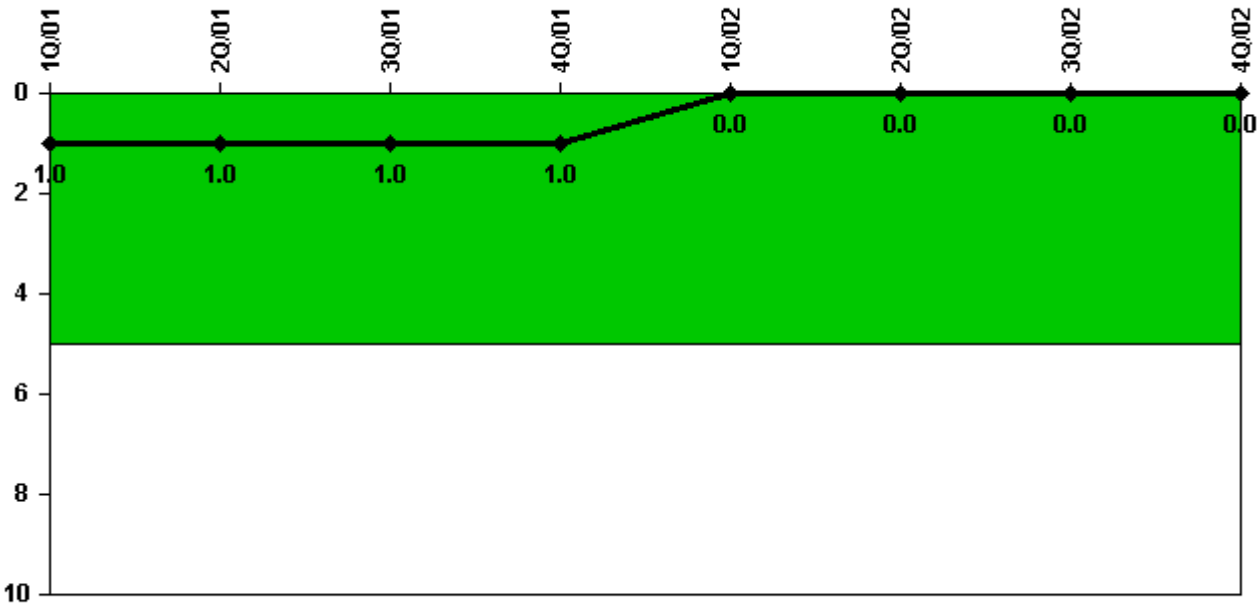
Thresholds: White > 1.5% Yellow > 5.0% Red > 10.0%

Notes

Safety System Unavailability, Residual Heat Removal System	1Q/01	2Q/01	3Q/01	4Q/01	1Q/02	2Q/02	3Q/02	4Q/02
Train 1								
Planned unavailable hours	6.63	0	11.78	0	15.62	0	8.77	8.05
Unplanned unavailable hours	0	0	0	0	0	0	0	0
Fault exposure hours	0	0	0	0	0	0	0	0
Effective Reset hours	0	0	0	0	0	0	0	0
Required hours	2160.00	2183.00	2208.00	2209.00	1857.00	2183.00	2208.00	2209.00
Train 2								
Planned unavailable hours	6.97	0	0	0	7.58	0	10.20	6.03
Unplanned unavailable hours	0	0	0	0	0	0	0	0
Fault exposure hours	0	0	0	0	0	0	0	0
Effective Reset hours	0	0	0	0	0	0	0	0
Required hours	2160.00	2183.00	2208.00	2209.00	1857.00	2183.00	2208.00	2209.00
Indicator value				0.1%	0.2%	0.2%	0.2%	0.2%

Licensee Comments: none

Safety System Functional Failures (PWR)



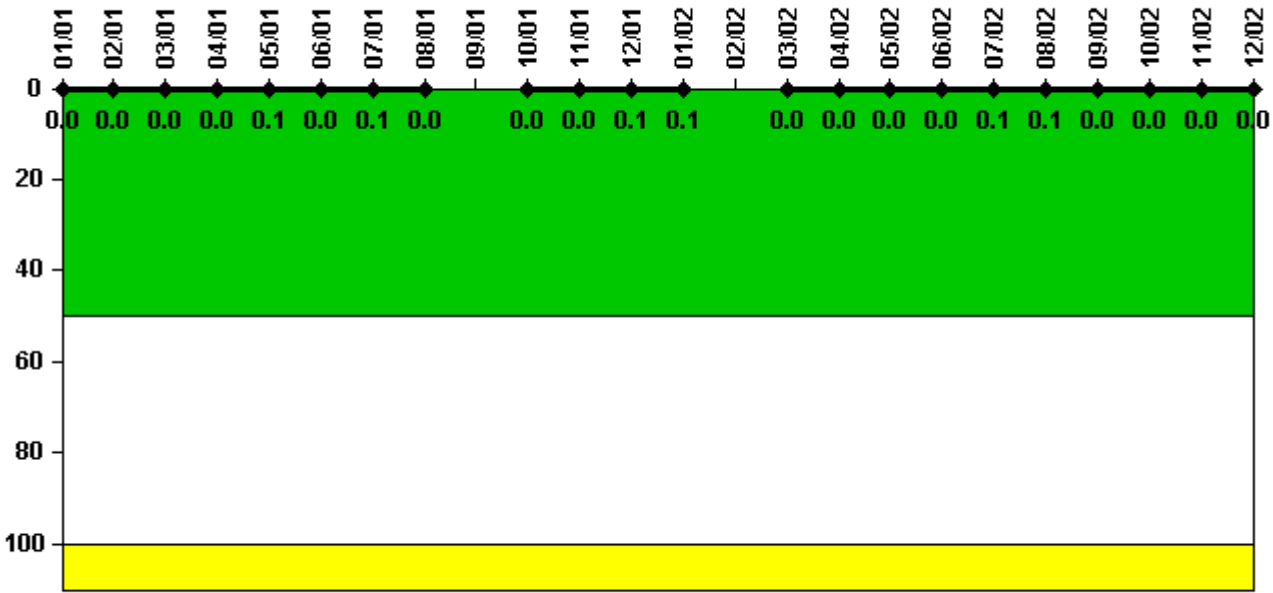
Thresholds: White > 5.0

Notes

Safety System Functional Failures (PWR)	1Q/01	2Q/01	3Q/01	4Q/01	1Q/02	2Q/02	3Q/02	4Q/02
Safety System Functional Failures	1	0	0	0	0	0	0	0
Indicator value	1	1	1	1	0	0	0	0

Licensee Comments: none

Reactor Coolant System Activity



Thresholds: White > 50.0 Yellow > 100.0

Notes

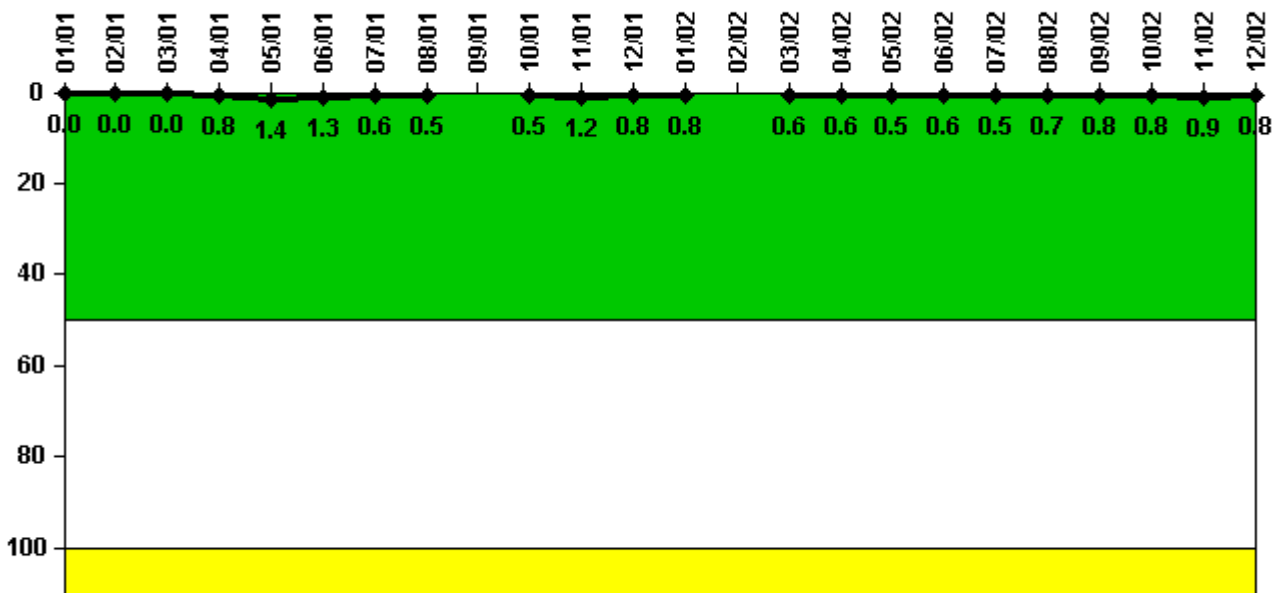
Reactor Coolant System Activity	1/01	2/01	3/01	4/01	5/01	6/01	7/01	8/01	9/01	10/01	11/01	12/01
Maximum activity	0.000394	0.000414	0.000401	0.000407	0.000508	0.000452	0.000677	0.000474	N/A	0.000480	0.000497	0.000515
Technical specification limit	1.0	1.0	1.0	1.0	1.0	1.0	1.0	1.0	1.0	1.0	1.0	1.0
Indicator value	0	0	0	0	0.1	0	0.1	0	N/A	0	0	0.1

Reactor Coolant System Activity	1/02	2/02	3/02	4/02	5/02	6/02	7/02	8/02	9/02	10/02	11/02	12/02
Maximum activity	0.000509	N/A	0.000212	0.000242	0.000214	0.000238	0.001100	0.000641	0.000316	0.000359	0.000324	0.000313
Technical specification limit	1.0	1.0	1.0	1.0	1.0	1.0	1.0	1.0	1.0	1.0	1.0	1.0
Indicator value	0.1	N/A	0	0	0	0	0.1	0.1	0	0	0	0

Licensee Comments:

12/02: No data to report for February 2002 - Unit entered the month in a refueling outage and commenced power ascension at the end of the month.

Reactor Coolant System Leakage



Thresholds: White > 50.0 Yellow > 100.0

Notes

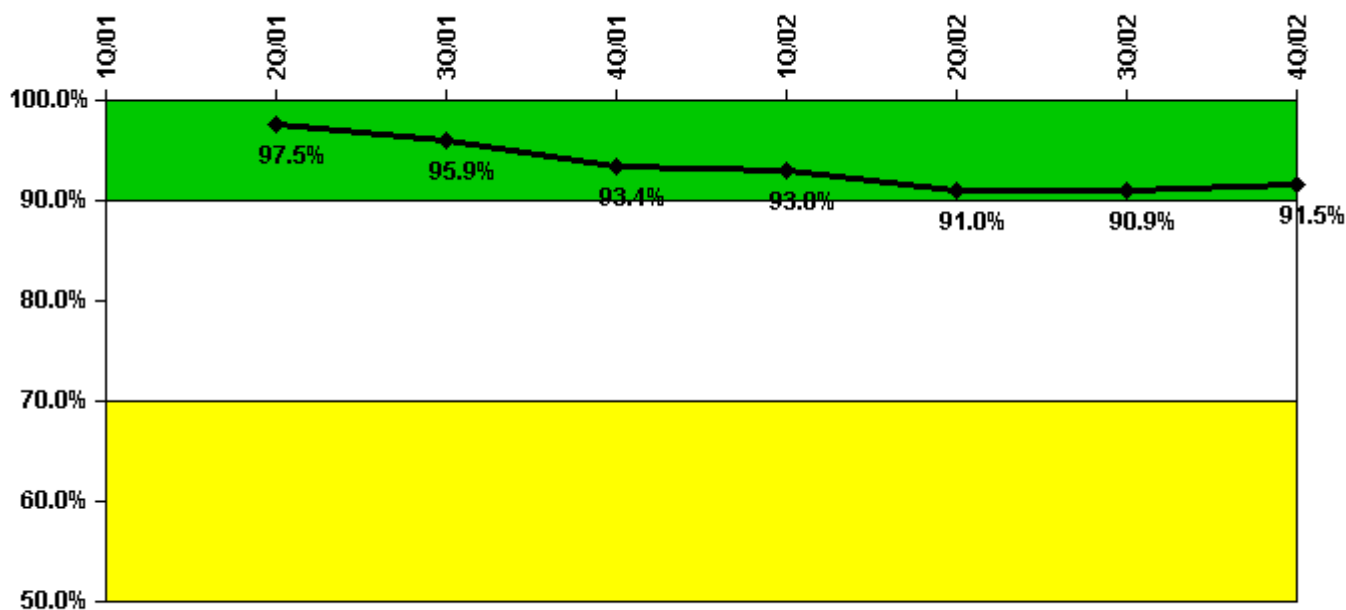
Reactor Coolant System Leakage	1/01	2/01	3/01	4/01	5/01	6/01	7/01	8/01	9/01	10/01	11/01	12/01
Maximum leakage	0	0	0	0.090	0.150	0.140	0.070	0.050	N/A	0.050	0.130	0.090
Technical specification limit	10.0	10.0	10.0	11.0	11.0	11.0	11.0	11.0	11.0	11.0	11.0	11.0
Indicator value	0	0	0	0.8	1.4	1.3	0.6	0.5	N/A	0.5	1.2	0.8

Reactor Coolant System Leakage	1/02	2/02	3/02	4/02	5/02	6/02	7/02	8/02	9/02	10/02	11/02	12/02
Maximum leakage	0.085	N/A	0.068	0.071	0.057	0.064	0.058	0.080	0.086	0.090	0.100	0.090
Technical specification limit	11.0	11.0	11.0	11.0	11.0	11.0	11.0	11.0	11.0	11.0	11.0	11.0
Indicator value	0.8	N/A	0.6	0.6	0.5	0.6	0.5	0.7	0.8	0.8	0.9	0.8

Licensee Comments:

12/02: No data to report for February 2002 - Unit entered the month in a refueling outage and commenced power ascension at the end of the month.

Drill/Exercise Performance



Thresholds: White < 90.0% Yellow < 70.0%

Notes

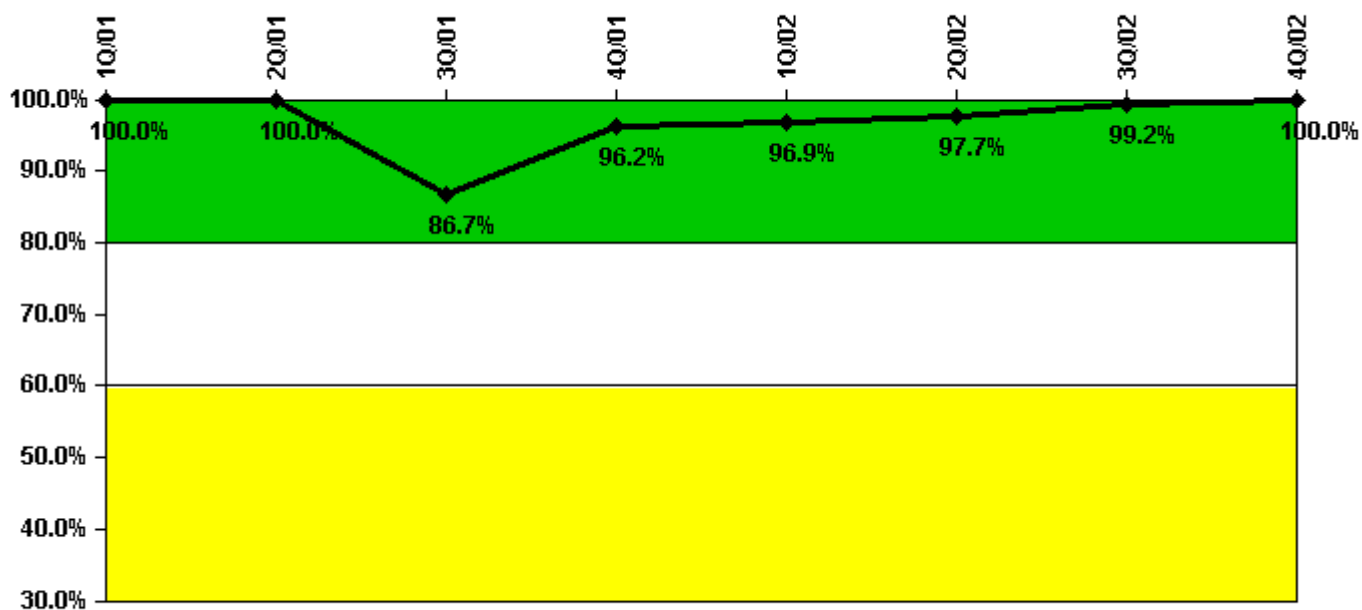
Drill/Exercise Performance	1Q/01	2Q/01	3Q/01	4Q/01	1Q/02	2Q/02	3Q/02	4Q/02
Successful opportunities	44.0	35.0	69.0	90.0	43.0	24.0	140.0	149.0
Total opportunities	44.0	36.0	76.0	104.0	46.0	34.0	150.0	159.0
Indicator value		97.5%	95.9%	93.4%	93.0%	91.0%	90.9%	91.5%

Licensee Comments:

3Q/02: Number of drill, exercise and actual event opportunities performed timely and accurately during the quarter decreased by one

2Q/02: The number of drill, exercise and actual event opportunities performed timely and accurately during the quarter decreased by two.

ERO Drill Participation



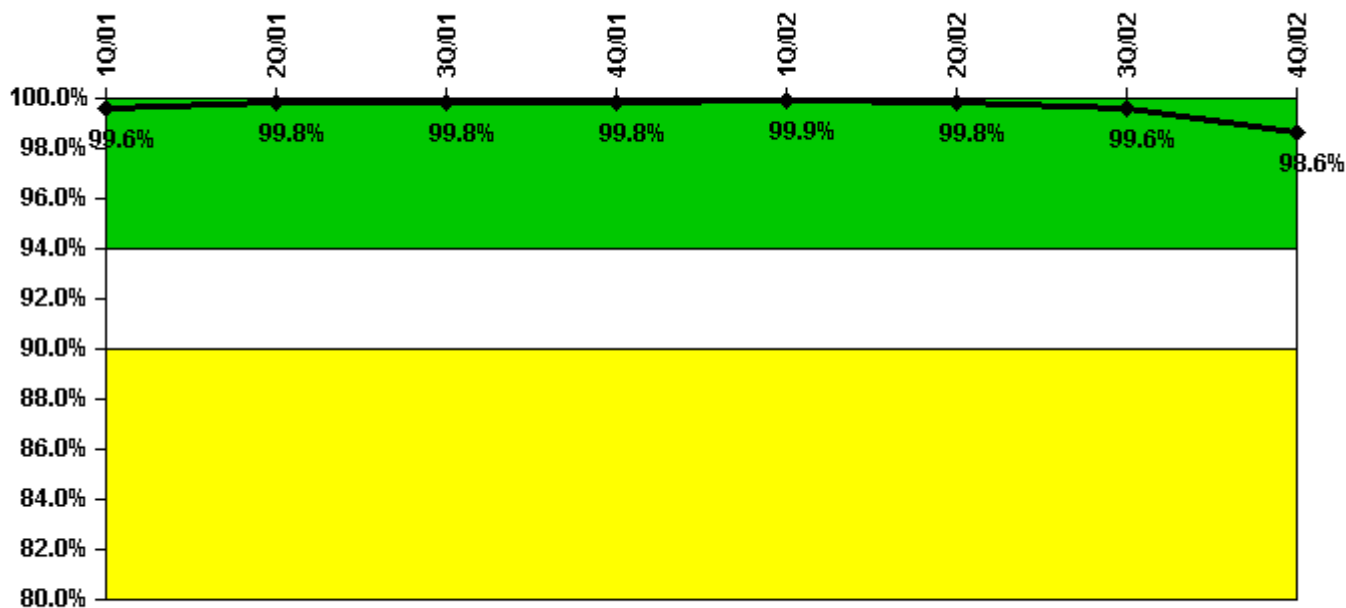
Thresholds: White < 80.0% Yellow < 60.0%

Notes

ERO Drill Participation	1Q/01	2Q/01	3Q/01	4Q/01	1Q/02	2Q/02	3Q/02	4Q/02
Participating Key personnel	54.0	55.0	111.0	125.0	127.0	125.0	130.0	131.0
Total Key personnel	54.0	55.0	128.0	130.0	131.0	128.0	131.0	131.0
Indicator value	100.0%	100.0%	86.7%	96.2%	96.9%	97.7%	99.2%	100.0%

Licensee Comments: none

Alert & Notification System



Thresholds: White < 94.0% Yellow < 90.0%

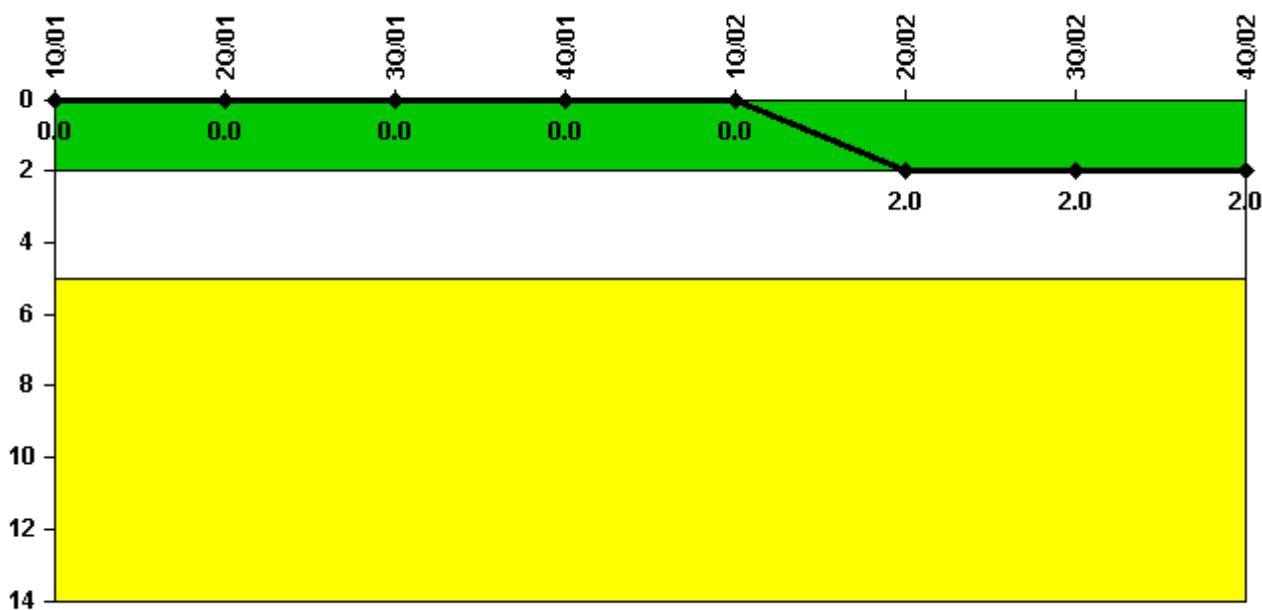
Notes

Alert & Notification System	1Q/01	2Q/01	3Q/01	4Q/01	1Q/02	2Q/02	3Q/02	4Q/02
Successful siren-tests	209	210	210	209	210	209	209	200
Total sirens-tests	210	210	210	210	210	210	210	210
Indicator value	99.6%	99.8%	99.8%	99.8%	99.9%	99.8%	99.6%	98.6%

Licensee Comments:

4Q/02: Decrease due to two hour outage resulting from relay failure in controlling power substation for nine sirens. Not considered an adverse trend.

Occupational Exposure Control Effectiveness



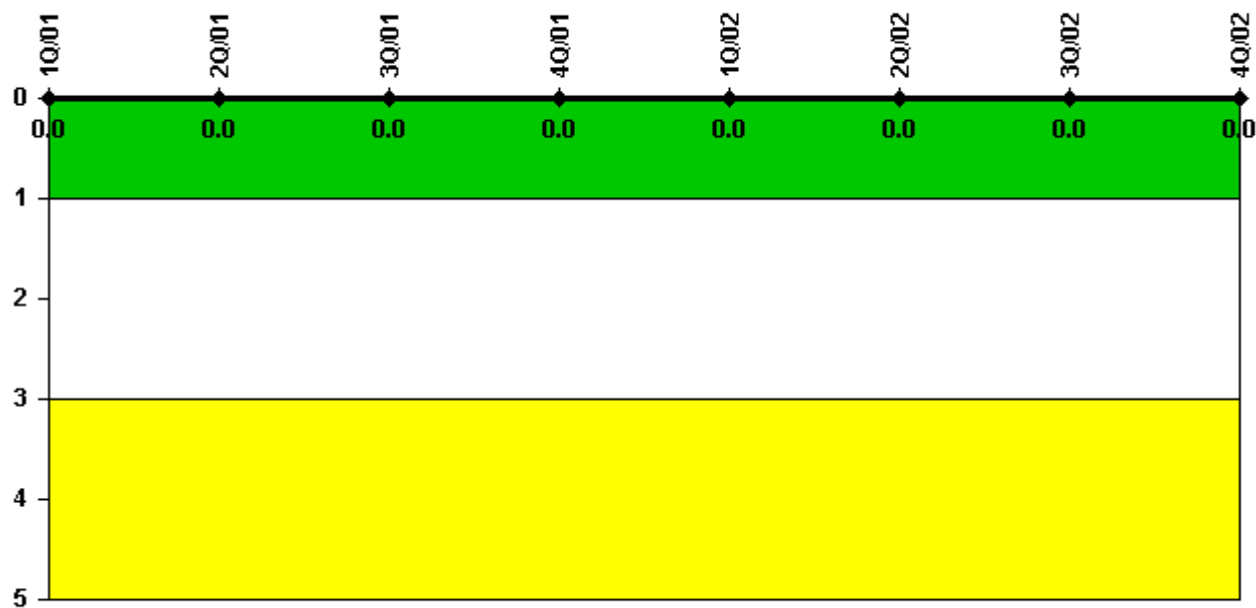
Thresholds: White > 2.0 Yellow > 5.0

Notes

Occupational Exposure Control Effectiveness	1Q/01	2Q/01	3Q/01	4Q/01	1Q/02	2Q/02	3Q/02	4Q/02
High radiation area occurrences	0	0	0	0	0	2	0	0
Very high radiation area occurrences	0	0	0	0	0	0	0	0
Unintended exposure occurrences	0	0	0	0	0	0	0	0
Indicator value	0	0	0	0	0	2	2	2

Licensee Comments: none

RETS/ODCM Radiological Effluent



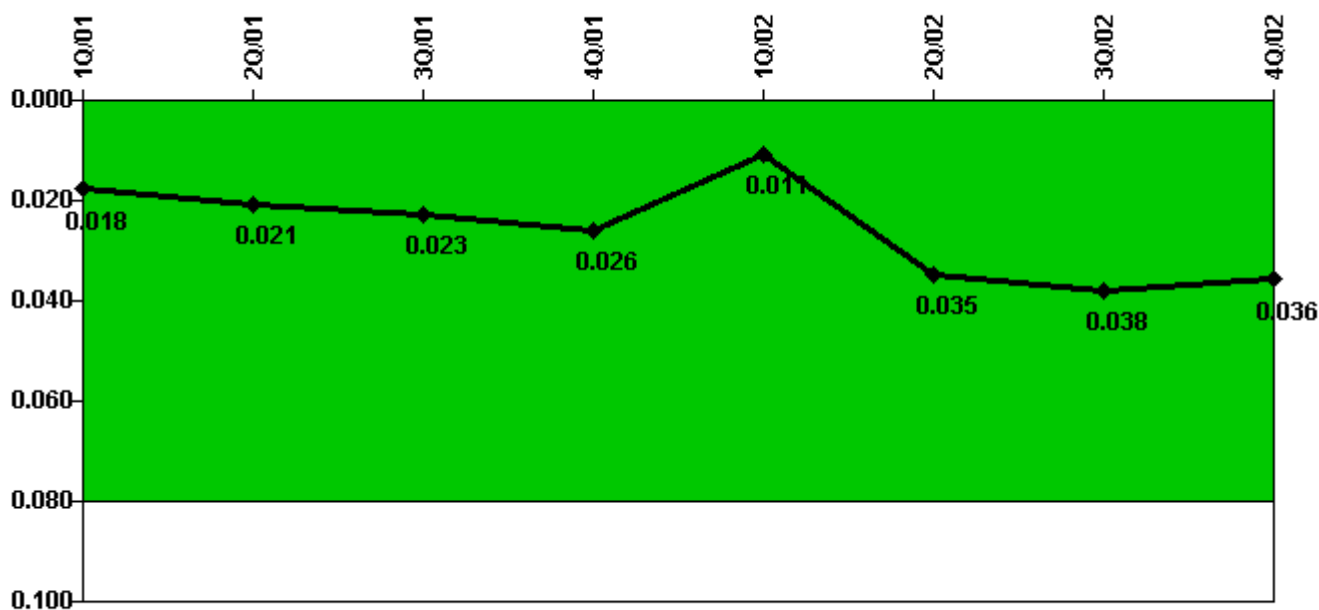
Thresholds: White > 1.0 Yellow > 3.0

Notes

RETS/ODCM Radiological Effluent	1Q/01	2Q/01	3Q/01	4Q/01	1Q/02	2Q/02	3Q/02	4Q/02
RETS/ODCM occurrences	0	0	0	0	0	0	0	0
Indicator value	0	0	0	0	0	0	0	0

Licensee Comments: none

Protected Area Security Performance Index



Thresholds: White > 0.080

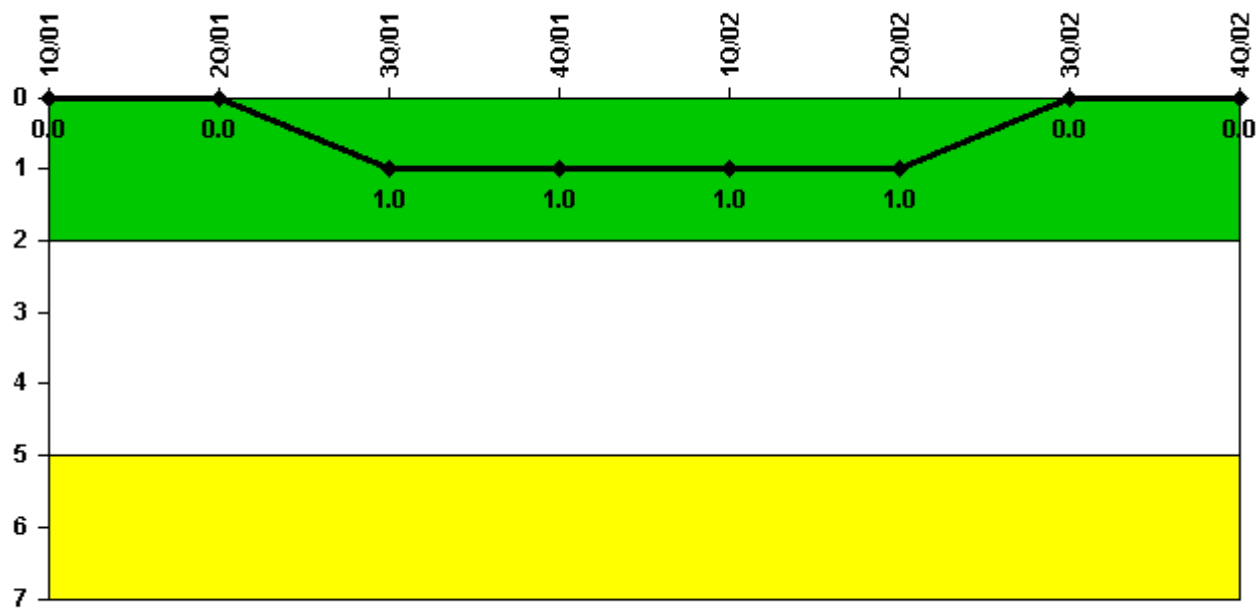
Notes

Protected Area Security Performance Index	1Q/01	2Q/01	3Q/01	4Q/01	1Q/02	2Q/02	3Q/02	4Q/02
IDS compensatory hours	376.40	97.80	49.50	103.70	28.20	680.50	111.70	52.10
CCTV compensatory hours	0	0.3	0	0	0	0	0	4.4
IDS normalization factor	1.40	1.40	1.40	1.40	1.40	1.40	1.40	1.40
CCTV normalization factor	1.0	1.0	1.0	1.0	1.0	1.0	1.0	1.0
Index Value	0.018	0.021	0.023	0.026	0.011	0.035	0.038	0.036

Licensee Comments:

4Q/02: In accordance with NEI 99-02, compensatory hours associated with scheduled equipment upgrades that are being performed and those compensatory hours for configuration issues associated with the equipment upgrades are excluded.

Personnel Screening Program



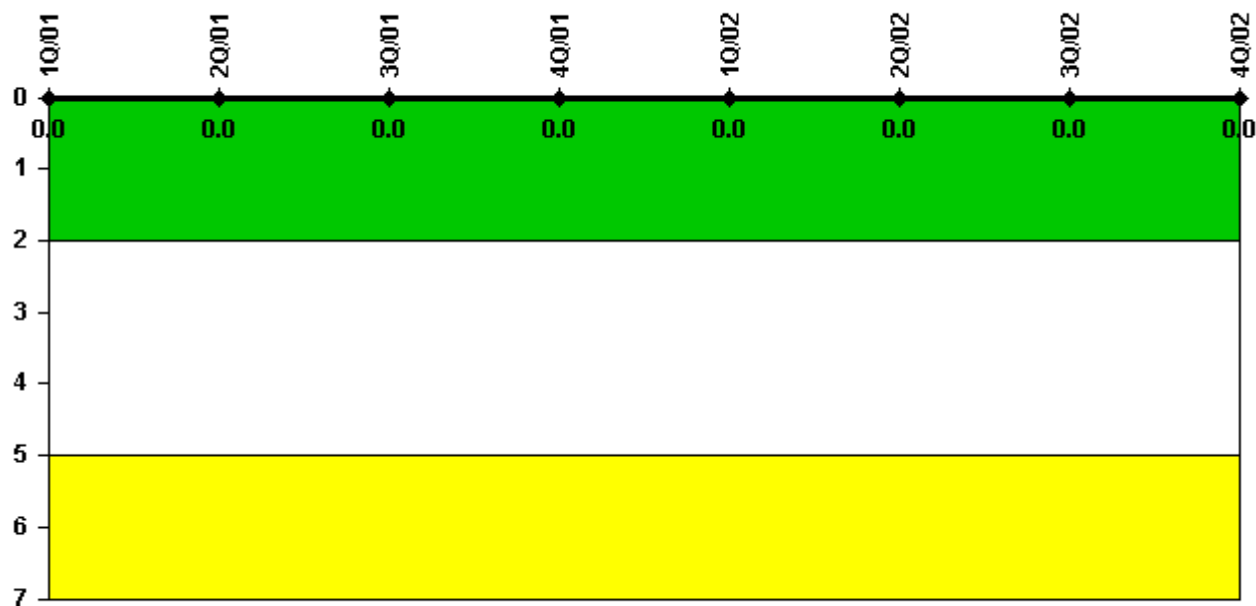
Thresholds: White > 2.0 Yellow > 5.0

Notes

Personnel Screening Program	1Q/01	2Q/01	3Q/01	4Q/01	1Q/02	2Q/02	3Q/02	4Q/02
Program failures	0	0	1	0	0	0	0	0
Indicator value	0	0	1	1	1	1	0	0

Licensee Comments: none

FFD/Personnel Reliability



Thresholds: White > 2.0 Yellow > 5.0

Notes

FFD/Personnel Reliability	1Q/01	2Q/01	3Q/01	4Q/01	1Q/02	2Q/02	3Q/02	4Q/02
Program Failures	0	0	0	0	0	0	0	0
Indicator value	0	0	0	0	0	0	0	0

Licensee Comments: none

▲ [PI Summary](#) | [Inspection Findings Summary](#) | [Reactor Oversight Process](#)

Last Modified: January 30, 2003