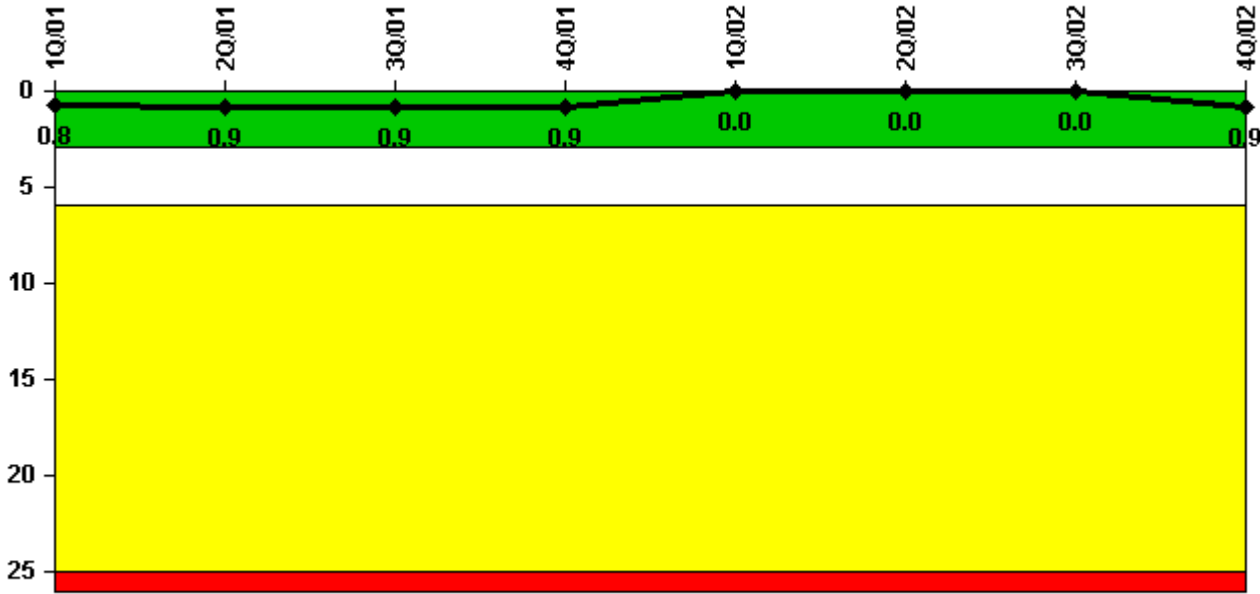


Callaway

4Q/2002 Performance Indicators

Licensee's General Comments: none

Unplanned Scrams per 7000 Critical Hrs



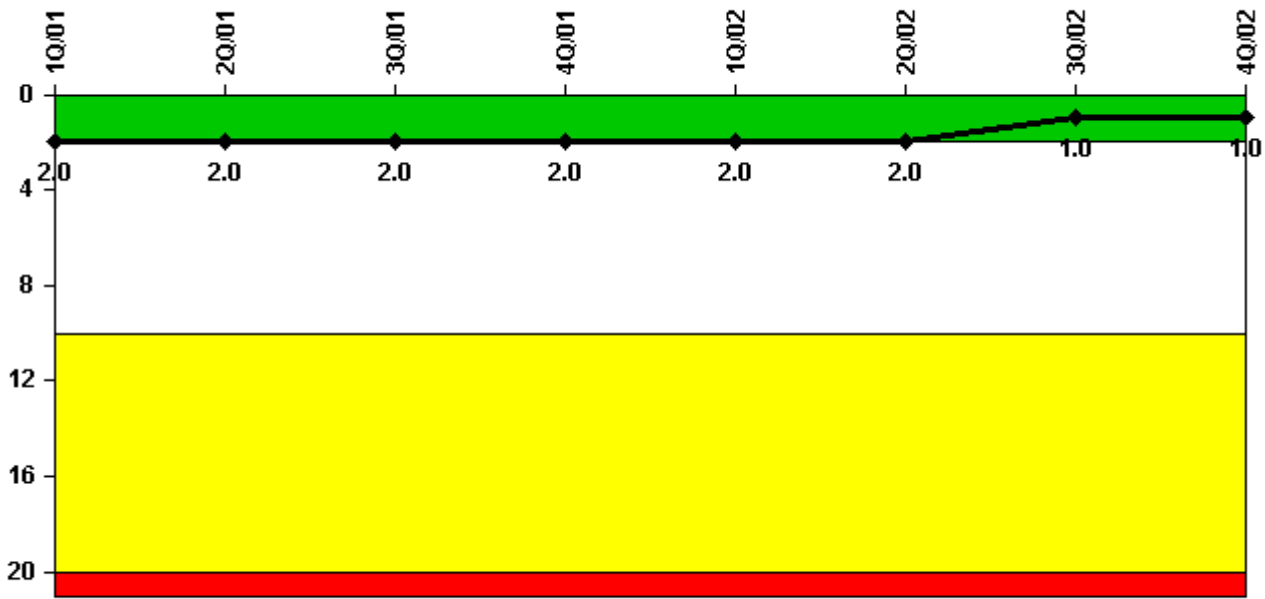
Thresholds: White > 3.0 Yellow > 6.0 Red > 25.0

Notes

Unplanned Scrams per 7000 Critical Hrs	1Q/01	2Q/01	3Q/01	4Q/01	1Q/02	2Q/02	3Q/02	4Q/02
Unplanned scrams	1.0	0	0	0	0	0	0	1.0
Critical hours	2113.0	1139.0	2208.0	2132.0	1840.0	2183.0	2208.0	1323.0
Indicator value	0.8	0.9	0.9	0.9	0	0	0	0.9

Licensee Comments: none

Scrams with Loss of Normal Heat Removal



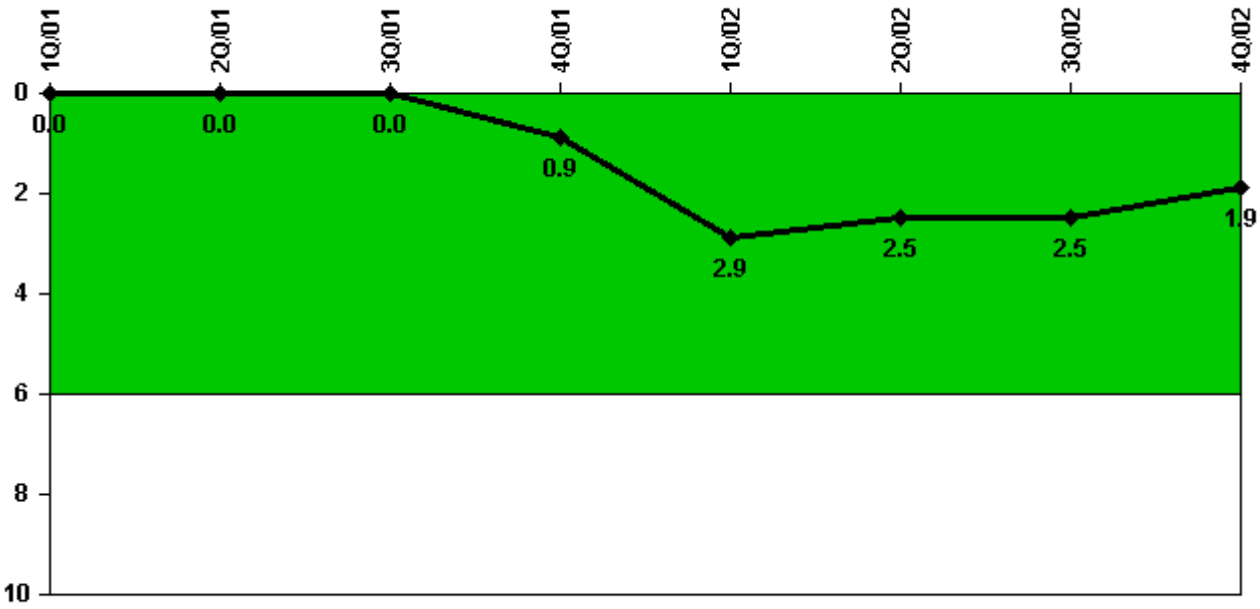
Thresholds: White > 2.0 Yellow > 10.0 Red > 20.0

Notes

Scrams with Loss of Normal Heat Removal	1Q/01	2Q/01	3Q/01	4Q/01	1Q/02	2Q/02	3Q/02	4Q/02
Scrams	0	0	0	0	0	0	0	0
Indicator value	2.0	2.0	2.0	2.0	2.0	2.0	1.0	1.0

Licensee Comments: none

Unplanned Power Changes per 7000 Critical Hrs



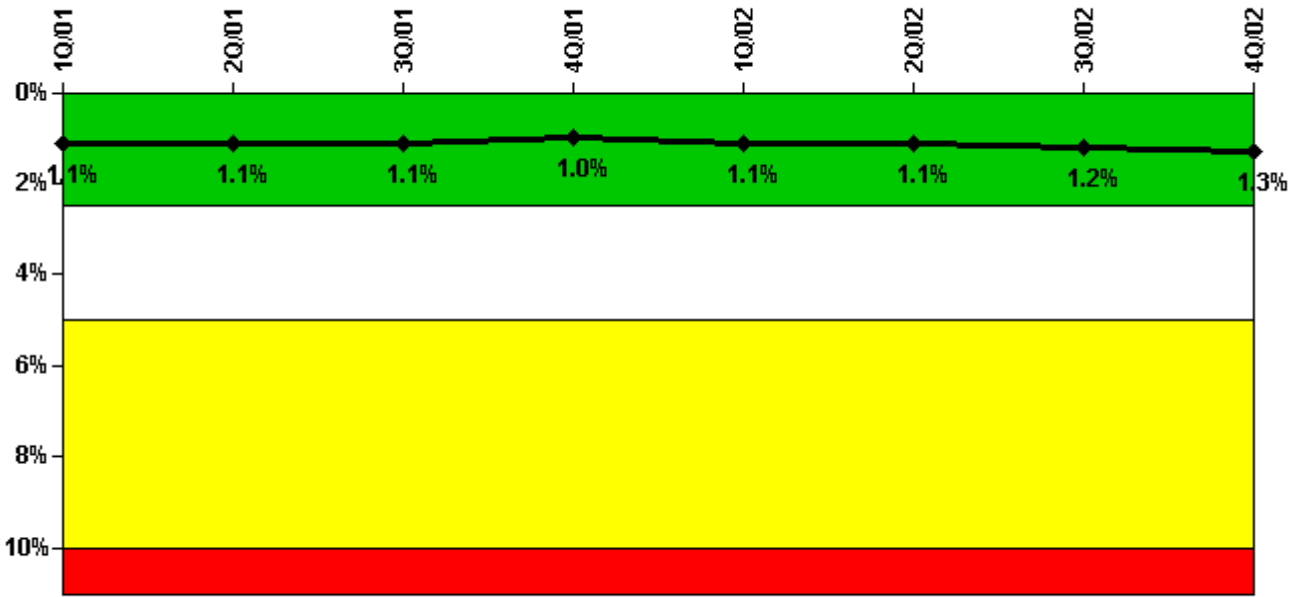
Thresholds: White > 6.0

Notes

Unplanned Power Changes per 7000 Critical Hrs	1Q/01	2Q/01	3Q/01	4Q/01	1Q/02	2Q/02	3Q/02	4Q/02
Unplanned power changes	0	0	0	1.0	2.0	0	0	0
Critical hours	2113.0	1139.0	2208.0	2132.0	1840.0	2183.0	2208.0	1323.0
Indicator value	0	0	0	0.9	2.9	2.5	2.5	1.9

Licensee Comments: none

Safety System Unavailability, Emergency AC Power



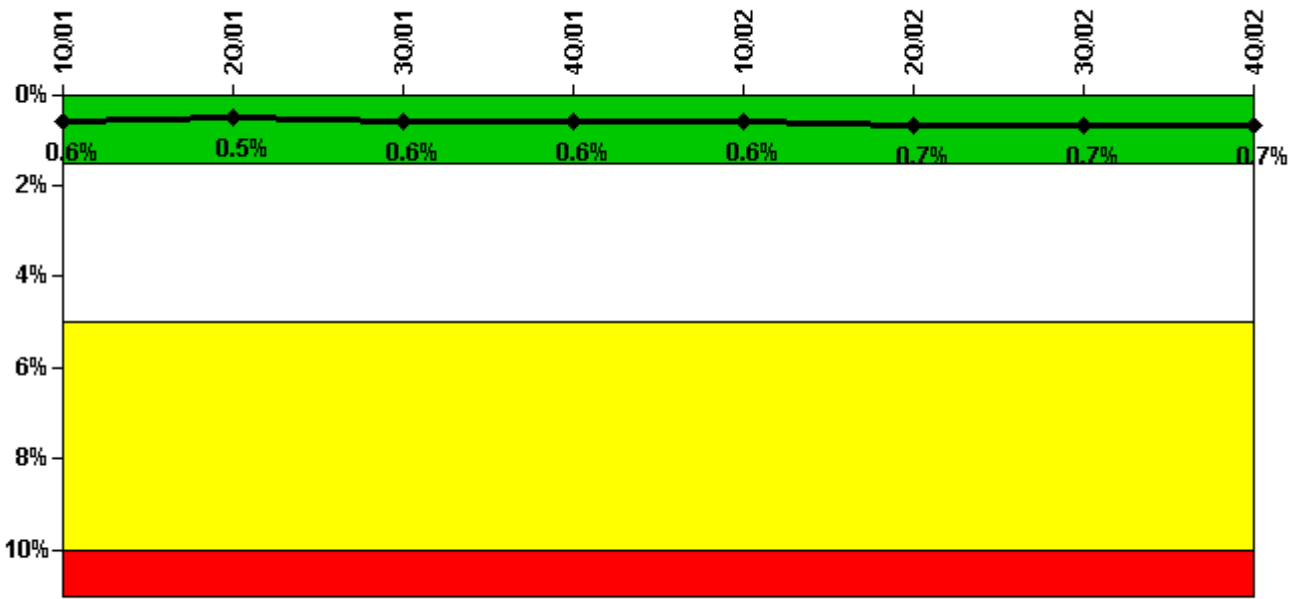
Thresholds: White > 2.5% Yellow > 5.0% Red > 10.0%

Notes

Safety System Unavailability, Emergency AC Power	1Q/01	2Q/01	3Q/01	4Q/01	1Q/02	2Q/02	3Q/02	4Q/02
Train 1								
Planned unavailable hours	14.30	3.30	24.30	1.50	18.70	3.00	42.20	55.50
Unplanned unavailable hours	0	0	0	2.40	0	0	8.20	0
Fault exposure hours	0	0	0	0	0	0	0	0
Effective Reset hours	0	0	0	0	0	0	0	0
Required hours	2160.00	1757.60	2208.00	2208.00	1849.40	2184.00	2208.00	1521.20
Train 2								
Planned unavailable hours	1.50	0.60	32.90	2.30	34.00	10.10	31.50	8.70
Unplanned unavailable hours	0	0	0	0	0	0.10	0	0
Fault exposure hours	132.30	0	0	0	0	0	0	0
Effective Reset hours	0	0	0	0	0	0	0	0
Required hours	2160.00	1757.60	2208.00	2208.00	1849.40	2184.00	2208.00	1521.20
Indicator value	1.1%	1.1%	1.1%	1.0%	1.1%	1.1%	1.2%	1.3%

Licensee Comments: none

Safety System Unavailability, High Pressure Injection System (HPSI)



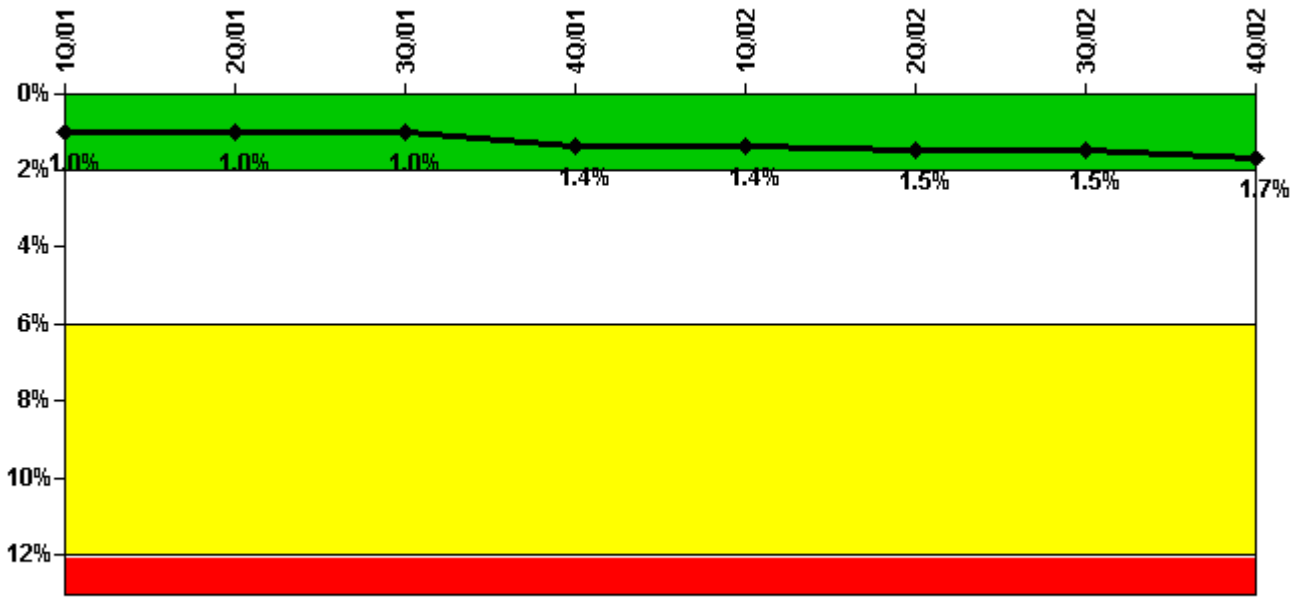
Thresholds: White > 1.5% Yellow > 5.0% Red > 10.0%

Notes

Safety System Unavailability, High Pressure Injection System (HPSI)	1Q/01	2Q/01	3Q/01	4Q/01	1Q/02	2Q/02	3Q/02	4Q/02
Train 1								
Planned unavailable hours	2.70	3.30	23.30	6.70	4.00	19.90	0.60	1.60
Unplanned unavailable hours	0	0	0	0	0	0	0.60	0
Fault exposure hours	0	0	0	0	0	0	0	0
Effective Reset hours	0	0	0	0	0	0	0	0
Required hours	2160.00	1672.30	2208.00	2208.00	1849.40	2184.00	2208.00	1491.50
Train 2								
Planned unavailable hours	19.10	3.60	4.90	1.60	32.50	2.30	1.20	1.40
Unplanned unavailable hours	0	0	0	4.30	0	0	9.60	1.10
Fault exposure hours	0	0	0	0	0	0	0	0
Effective Reset hours	0	0	0	0	0	0	0	0
Required hours	2160.00	1672.30	2208.00	2208.00	1849.40	2184.00	2208.00	1491.50
Train 3								
Planned unavailable hours	3.60	2.20	8.20	19.60	2.00	17.60	22.50	0.60
Unplanned unavailable hours	0.60	0	0	0	0	0	0.60	0
Fault exposure hours	0	0	0	0	0	0	0	0
Effective Reset hours	0	0	0	0	0	0	0	0
Required hours	2160.00	1280.00	2208.00	2208.00	1849.40	2184.00	2208.00	1491.50
Train 4								
Planned unavailable hours	3.50	3.20	6.70	19.70	18.50	2.00	1.30	13.20
Unplanned unavailable hours	0	0	0	4.30	0	0	9.60	1.10
Fault exposure hours	0	0	0	0	0	0	0	0
Effective Reset hours	0	0	0	0	0	0	0	0
Required hours	2160.00	1280.00	2208.00	2208.00	1849.40	2184.00	2208.00	1491.50
Indicator value	0.6%	0.5%	0.6%	0.6%	0.6%	0.7%	0.7%	0.7%

Licensee Comments: none

Safety System Unavailability, Heat Removal System (AFW)



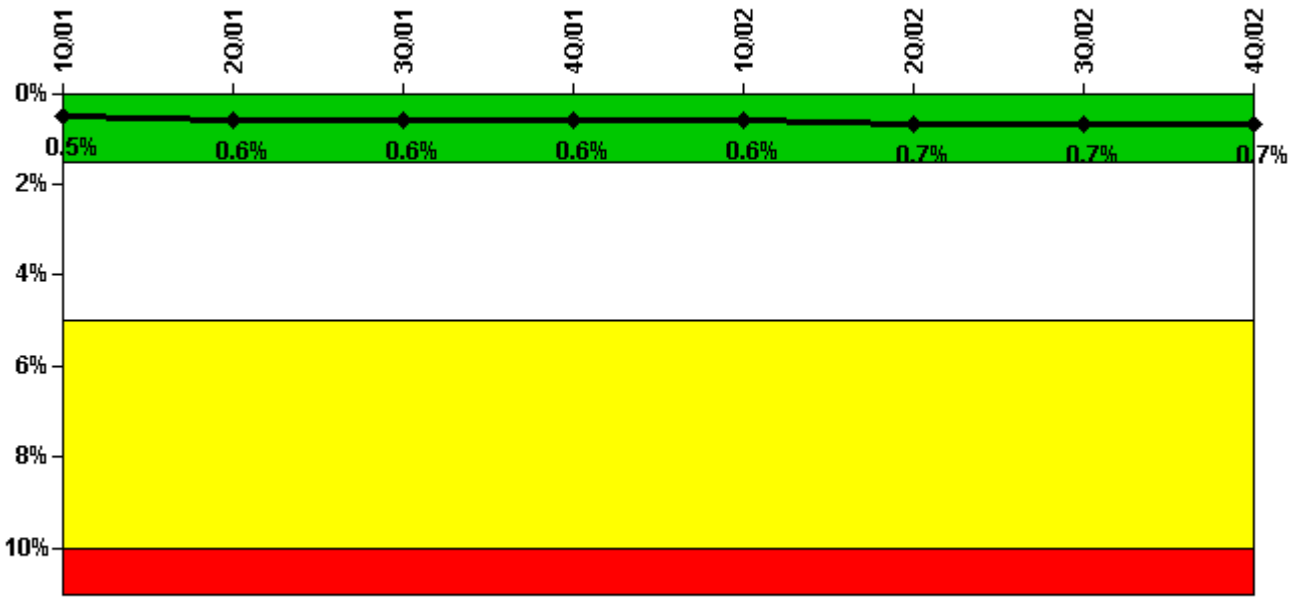
Thresholds: White > 2.0% Yellow > 6.0% Red > 12.0%

Notes

Safety System Unavailability, Heat Removal System (AFW)	1Q/01	2Q/01	3Q/01	4Q/01	1Q/02	2Q/02	3Q/02	4Q/02
Train 1								
Planned unavailable hours	12.30	0	16.20	17.40	19.20	3.80	37.80	21.60
Unplanned unavailable hours	0	0	0	45.70	0	0	0.90	0
Fault exposure hours	0	0	0	239.80	0	0	0	0
Effective Reset hours	0	0	0	0	0	0	0	0
Required hours	2160.00	1276.20	2208.00	2208.00	1849.40	2184.00	2208.00	1491.50
Train 2								
Planned unavailable hours	3.30	0	1.20	24.10	2.60	1.70	14.00	24.40
Unplanned unavailable hours	0	0	15.30	0	13.80	0	0	0
Fault exposure hours	0	0	0	0	0	0	0	0
Effective Reset hours	0	0	0	0	0	0	0	0
Required hours	2160.00	1276.20	2208.00	2208.00	1849.40	2184.00	2208.00	1491.50
Train 3								
Planned unavailable hours	28.10	7.50	15.00	10.60	3.30	45.80	2.70	36.50
Unplanned unavailable hours	0.50	4.50	0	0	14.70	0	0	97.30
Fault exposure hours	0	0	0	0	0	0	0	0
Effective Reset hours	0	0	0	0	0	0	0	0
Required hours	2160.00	1276.20	2208.00	2208.00	1849.40	2184.00	2208.00	1491.50
Indicator value	1.0%	1.0%	1.0%	1.4%	1.4%	1.5%	1.5%	1.7%

Licensee Comments: none

Safety System Unavailability, Residual Heat Removal System



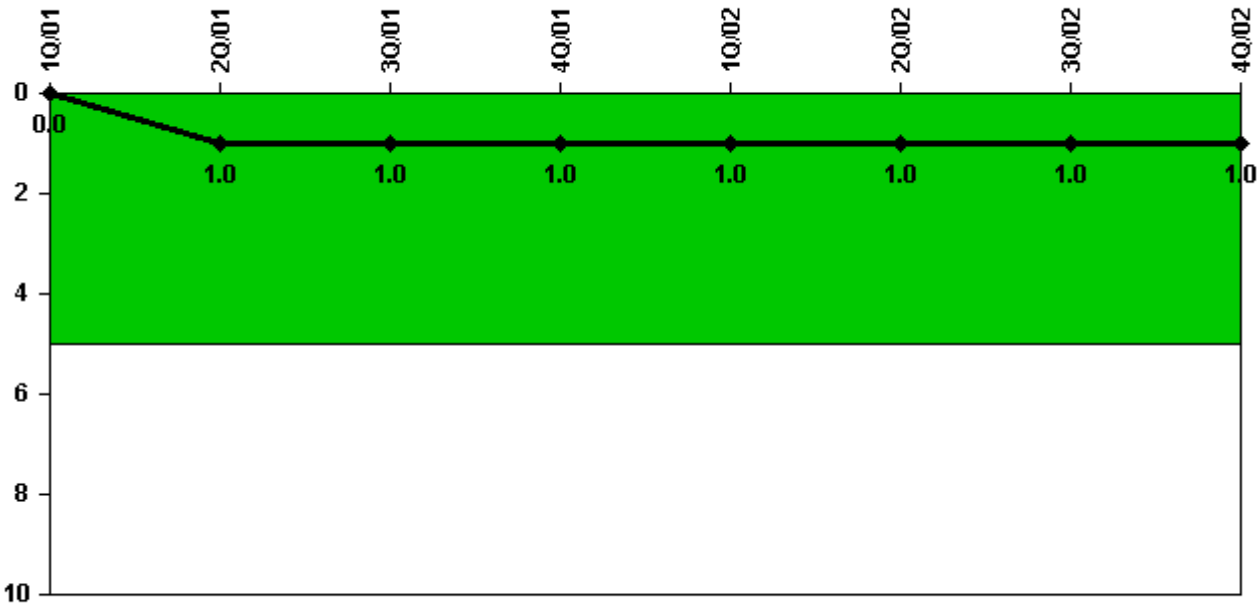
Thresholds: White > 1.5% Yellow > 5.0% Red > 10.0%

Notes

Safety System Unavailability, Residual Heat Removal System	1Q/01	2Q/01	3Q/01	4Q/01	1Q/02	2Q/02	3Q/02	4Q/02
Train 1								
Planned unavailable hours	1.80	25.40	6.30	25.70	2.70	28.90	6.70	2.90
Unplanned unavailable hours	0	0	0	0	0	0	0.60	0.80
Fault exposure hours	0	0	0	0	0	0	0	0
Effective Reset hours	0	0	0	0	0	0	0	0
Required hours	2160.00	1815.90	2208.00	2208.00	2160.00	2184.00	2208.00	2073.50
Train 2								
Planned unavailable hours	11.70	1.70	16.70	1.60	17.80	22.60	0.40	4.50
Unplanned unavailable hours	0	0	0	4.30	0	0	21.70	1.10
Fault exposure hours	0	0	0	0	0	0	0	0
Effective Reset hours	0	0	0	0	0	0	0	0
Required hours	2160.00	1815.90	2208.00	2208.00	2160.00	2184.00	2208.00	2073.50
Indicator value	0.5%	0.6%	0.6%	0.6%	0.6%	0.7%	0.7%	0.7%

Licensee Comments: none

Safety System Functional Failures (PWR)



Thresholds: White > 5.0

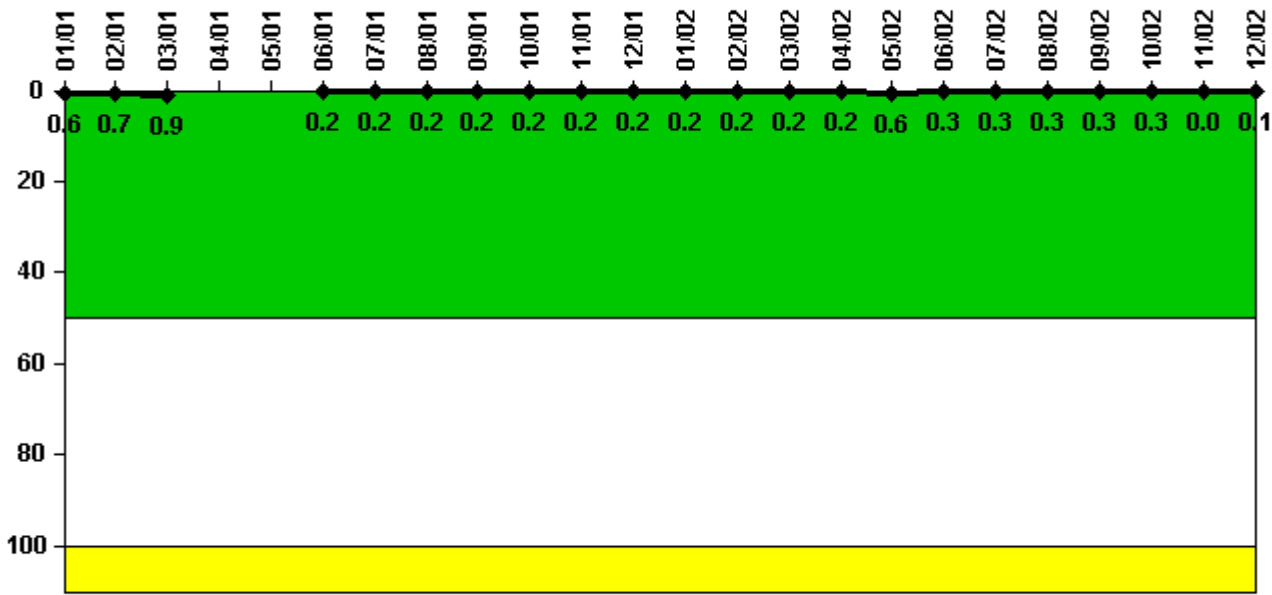
Notes

Safety System Functional Failures (PWR)	1Q/01	2Q/01	3Q/01	4Q/01	1Q/02	2Q/02	3Q/02	4Q/02
Safety System Functional Failures	0	1	0	0	0	1	0	0
Indicator value	0	1	1	1	1	1	1	1

Licensee Comments:

4Q/00: Subsequent to a NRC review of the 4th quarter 2000 SSFF data, it was determined that the event associated with LER 2000-006 was inappropriately reported as a SSFF. A SSFF value of 1 was initially reported and is being corrected to a value of 0. This change does not affect the color of the SSFF PI.

Reactor Coolant System Activity



Thresholds: White > 50.0 Yellow > 100.0

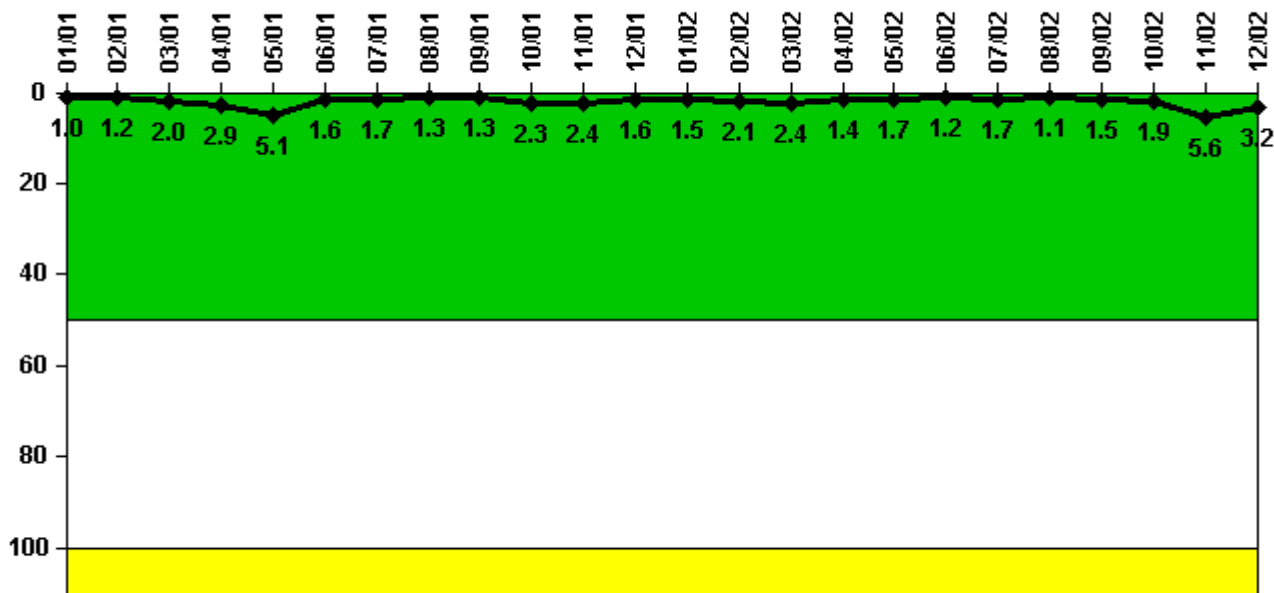
Notes

Reactor Coolant System Activity	1/01	2/01	3/01	4/01	5/01	6/01	7/01	8/01	9/01	10/01	11/01	12/01
Maximum activity	0.005740	0.007000	0.009070	N/A	N/A	0.001510	0.001530	0.001620	0.001580	0.001700	0.001720	0.001690
Technical specification limit	1.0	1.0	1.0	1.0	1.0	1.0	1.0	1.0	1.0	1.0	1.0	1.0
Indicator value	0.6	0.7	0.9	N/A	N/A	0.2	0.2	0.2	0.2	0.2	0.2	0.2

Reactor Coolant System Activity	1/02	2/02	3/02	4/02	5/02	6/02	7/02	8/02	9/02	10/02	11/02	12/02
Maximum activity	0.001960	0.001890	0.002290	0.002130	0.005510	0.002530	0.002520	0.002810	0.002660	0.003400	0.000440	0.000850
Technical specification limit	1.0	1.0	1.0	1.0	1.0	1.0	1.0	1.0	1.0	1.0	1.0	1.0
Indicator value	0.2	0.2	0.2	0.2	0.6	0.3	0.3	0.3	0.3	0.3	0	0.1

Licensee Comments: none

Reactor Coolant System Leakage



Thresholds: White > 50.0 Yellow > 100.0

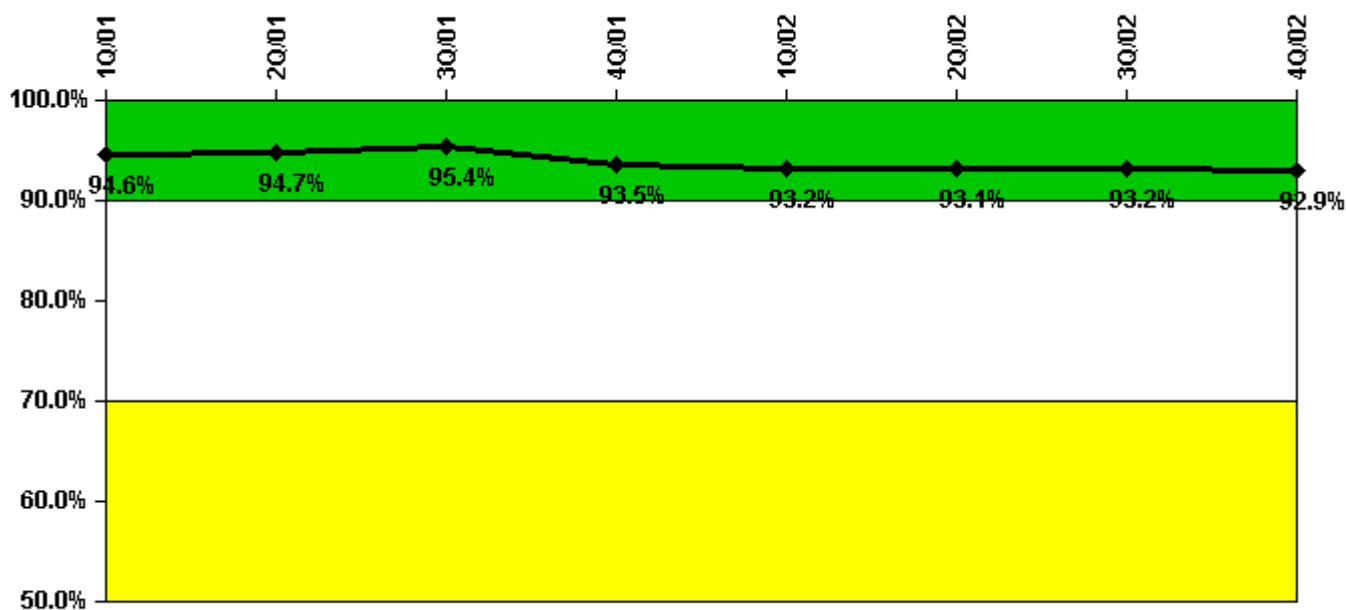
Notes

Reactor Coolant System Leakage	1/01	2/01	3/01	4/01	5/01	6/01	7/01	8/01	9/01	10/01	11/01	12/01
Maximum leakage	0.100	0.120	0.199	0.294	0.506	0.160	0.170	0.127	0.134	0.229	0.241	0.158
Technical specification limit	10.0	10.0	10.0	10.0	10.0	10.0	10.0	10.0	10.0	10.0	10.0	10.0
Indicator value	1.0	1.2	2.0	2.9	5.1	1.6	1.7	1.3	1.3	2.3	2.4	1.6

Reactor Coolant System Leakage	1/02	2/02	3/02	4/02	5/02	6/02	7/02	8/02	9/02	10/02	11/02	12/02
Maximum leakage	0.154	0.208	0.244	0.135	0.174	0.119	0.173	0.105	0.148	0.193	0.555	0.321
Technical specification limit	10.0	10.0	10.0	10.0	10.0	10.0	10.0	10.0	10.0	10.0	10.0	10.0
Indicator value	1.5	2.1	2.4	1.4	1.7	1.2	1.7	1.1	1.5	1.9	5.6	3.2

Licensee Comments: none

Drill/Exercise Performance



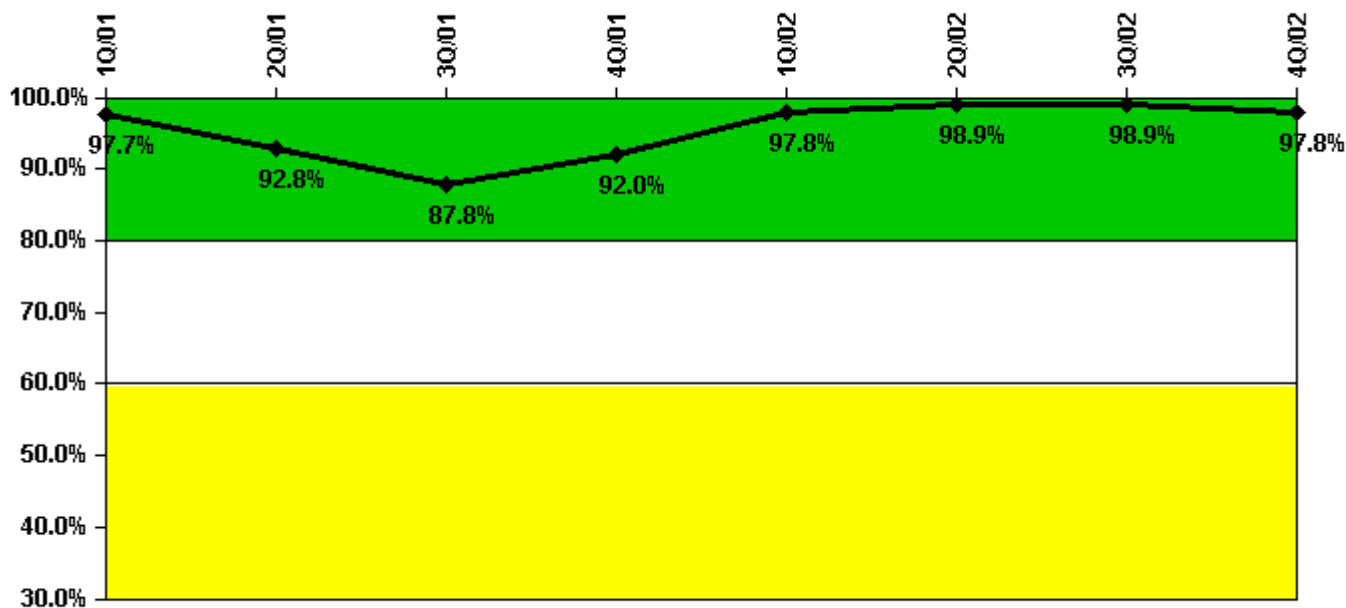
Thresholds: White < 90.0% Yellow < 70.0%

Notes

Drill/Exercise Performance	1Q/01	2Q/01	3Q/01	4Q/01	1Q/02	2Q/02	3Q/02	4Q/02
Successful opportunities	50.0	0	29.0	79.0	51.0	33.0	38.0	6.0
Total opportunities	52.0	0	31.0	88.0	55.0	35.0	41.0	6.0
Indicator value	94.6%	94.7%	95.4%	93.5%	93.2%	93.1%	93.2%	92.9%

Licensee Comments: none

ERO Drill Participation



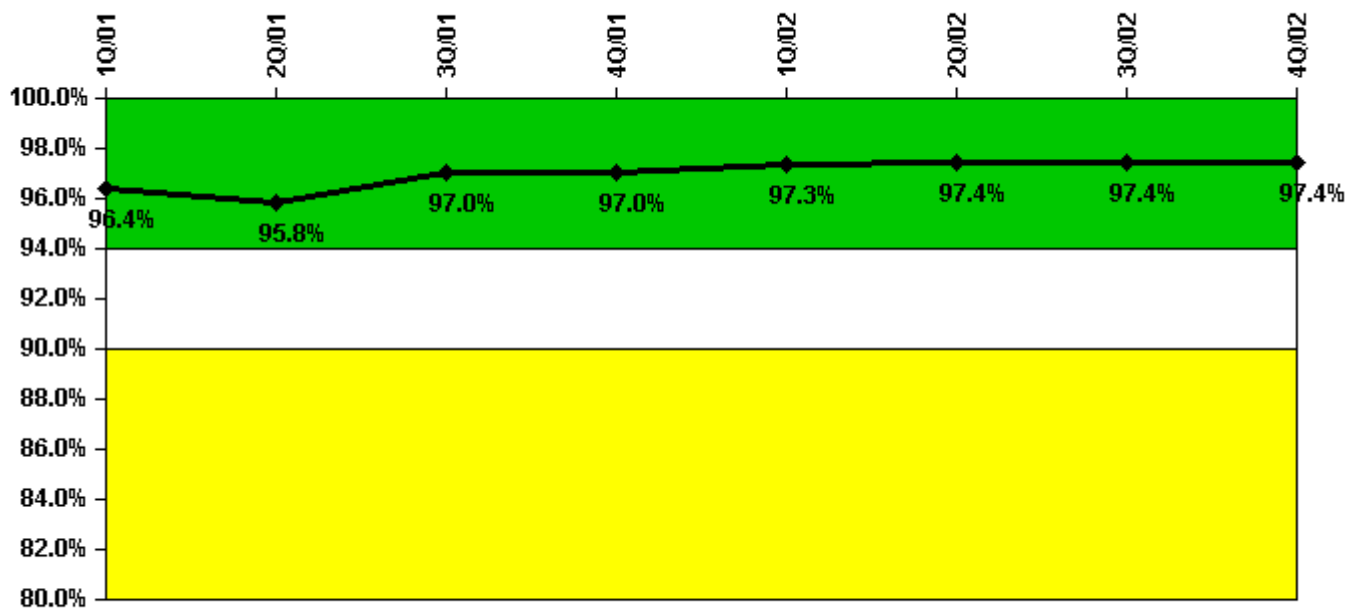
Thresholds: White < 80.0% Yellow < 60.0%

Notes

ERO Drill Participation	1Q/01	2Q/01	3Q/01	4Q/01	1Q/02	2Q/02	3Q/02	4Q/02
Participating Key personnel	84.0	77.0	79.0	81.0	87.0	88.0	91.0	87.0
Total Key personnel	86.0	83.0	90.0	88.0	89.0	89.0	92.0	89.0
Indicator value	97.7%	92.8%	87.8%	92.0%	97.8%	98.9%	98.9%	97.8%

Licensee Comments: none

Alert & Notification System



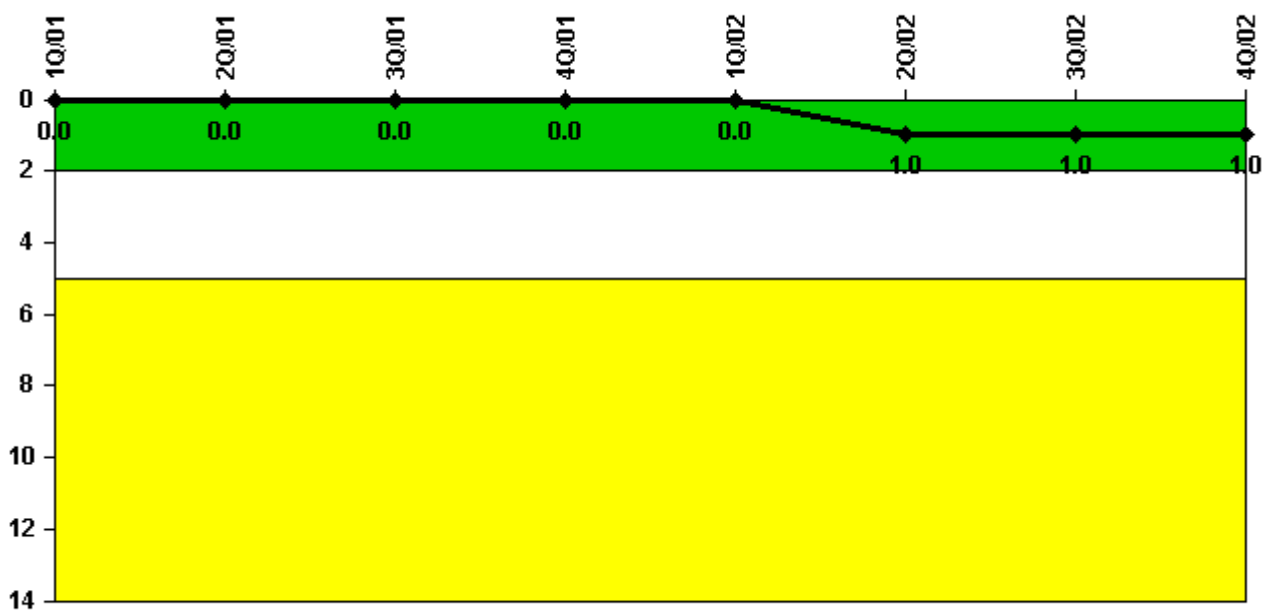
Thresholds: White < 94.0% Yellow < 90.0%

Notes

Alert & Notification System	1Q/01	2Q/01	3Q/01	4Q/01	1Q/02	2Q/02	3Q/02	4Q/02
Successful siren-tests	80	81	83	82	84	84	86	85
Total sirens-tests	84	84	84	84	87	87	87	87
Indicator value	96.4%	95.8%	97.0%	97.0%	97.3%	97.4%	97.4%	97.4%

Licensee Comments: none

Occupational Exposure Control Effectiveness



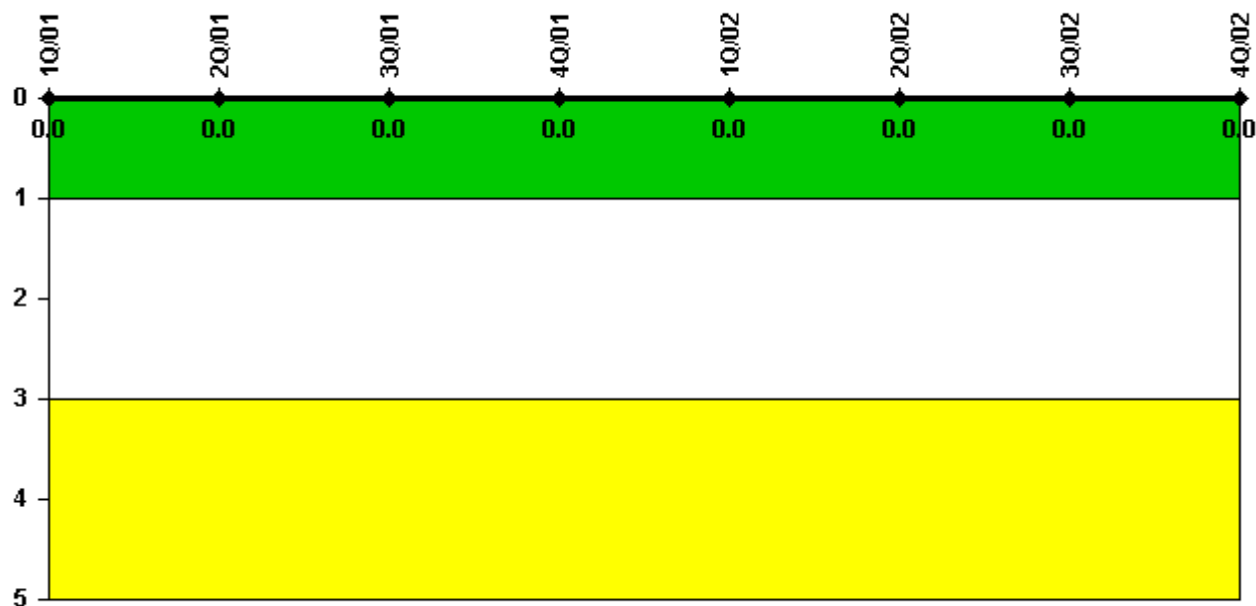
Thresholds: White > 2.0 Yellow > 5.0

Notes

Occupational Exposure Control Effectiveness	1Q/01	2Q/01	3Q/01	4Q/01	1Q/02	2Q/02	3Q/02	4Q/02
High radiation area occurrences	0	0	0	0	0	1	0	0
Very high radiation area occurrences	0	0	0	0	0	0	0	0
Unintended exposure occurrences	0	0	0	0	0	0	0	0
Indicator value	0	0	0	0	0	1	1	1

Licensee Comments: none

RETS/ODCM Radiological Effluent



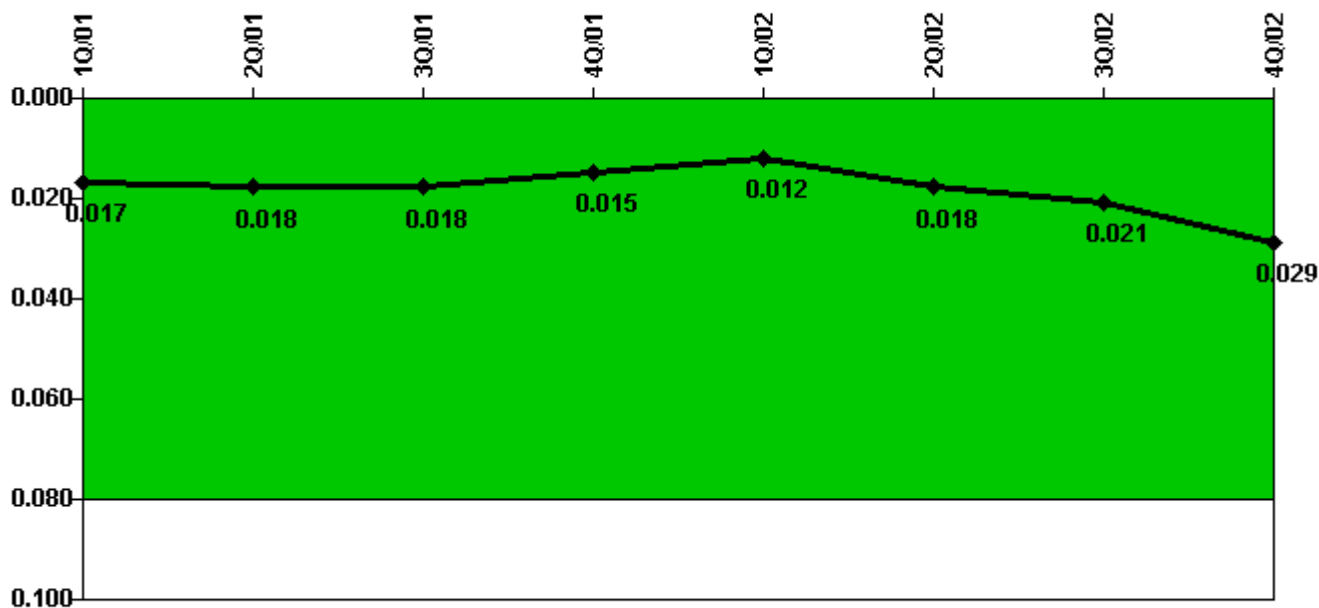
Thresholds: White > 1.0 Yellow > 3.0

Notes

RETS/ODCM Radiological Effluent	1Q/01	2Q/01	3Q/01	4Q/01	1Q/02	2Q/02	3Q/02	4Q/02
RETS/ODCM occurrences	0	0	0	0	0	0	0	0
Indicator value	0	0	0	0	0	0	0	0

Licensee Comments: none

Protected Area Security Performance Index



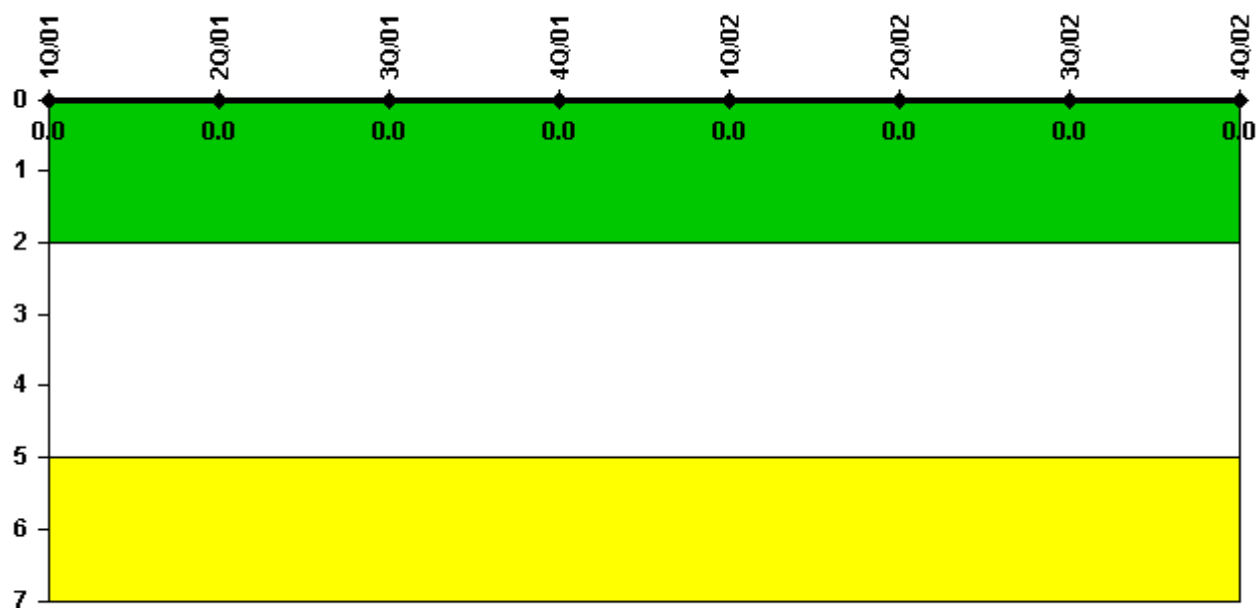
Thresholds: White > 0.080

Notes

Protected Area Security Performance Index	1Q/01	2Q/01	3Q/01	4Q/01	1Q/02	2Q/02	3Q/02	4Q/02
IDS compensatory hours	89.50	63.90	61.80	130.60	6.30	218.30	81.30	331.70
CCTV compensatory hours	0.1	5.1	6.7	1.5	1.1	12.6	35.4	2.5
IDS normalization factor	1.40	1.40	1.40	1.40	1.40	1.40	1.40	1.40
CCTV normalization factor	1.0	1.0	1.0	1.0	1.0	1.0	1.0	1.0
Index Value	0.017	0.018	0.018	0.015	0.012	0.018	0.021	0.029

Licensee Comments: none

Personnel Screening Program



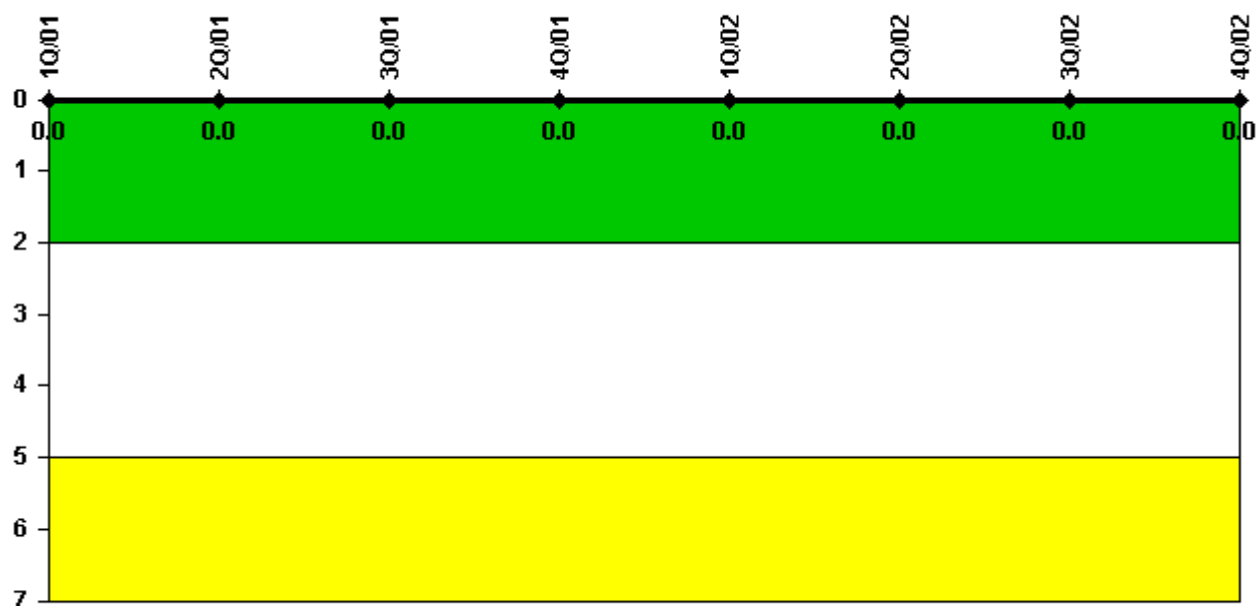
Thresholds: White > 2.0 Yellow > 5.0

Notes

Personnel Screening Program	1Q/01	2Q/01	3Q/01	4Q/01	1Q/02	2Q/02	3Q/02	4Q/02
Program failures	0	0	0	0	0	0	0	0
Indicator value	0	0	0	0	0	0	0	0

Licensee Comments: none

FFD/Personnel Reliability



Thresholds: White > 2.0 Yellow > 5.0

Notes

FFD/Personnel Reliability	1Q/01	2Q/01	3Q/01	4Q/01	1Q/02	2Q/02	3Q/02	4Q/02
Program Failures	0	0	0	0	0	0	0	0
Indicator value	0	0	0	0	0	0	0	0

Licensee Comments: none

▲ [PI Summary](#) | [Inspection Findings Summary](#) | [Reactor Oversight Process](#)

Last Modified: January 30, 2003