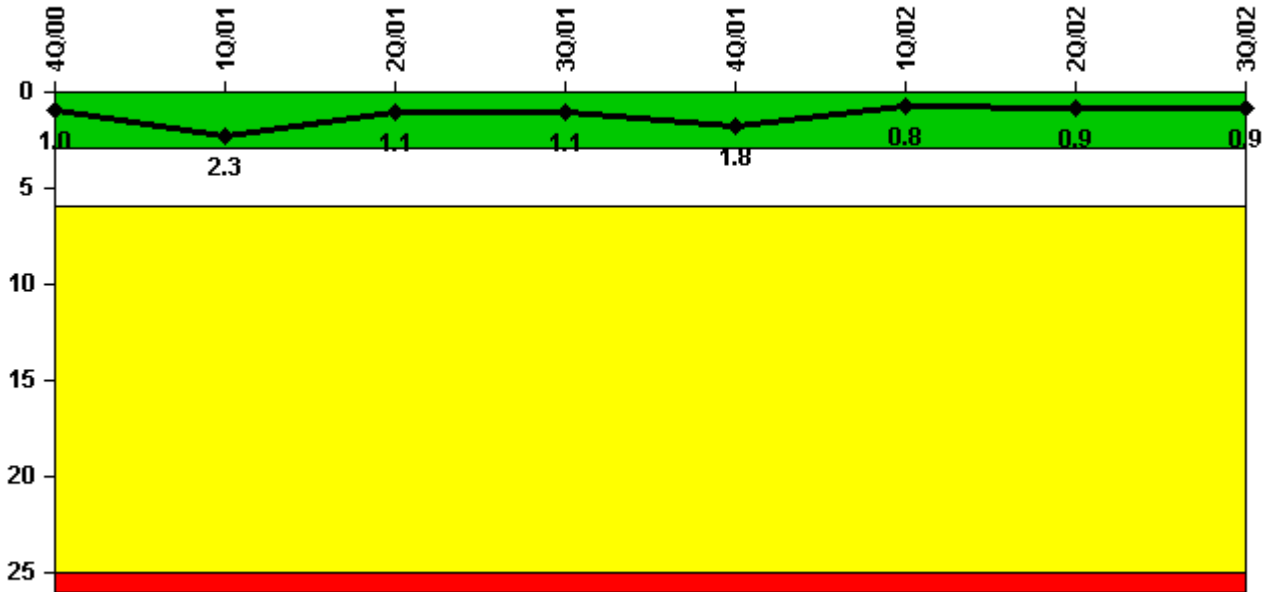


Seabrook 1

3Q/2002 Performance Indicators

Licensee's General Comments: none

Unplanned Scrams per 7000 Critical Hrs



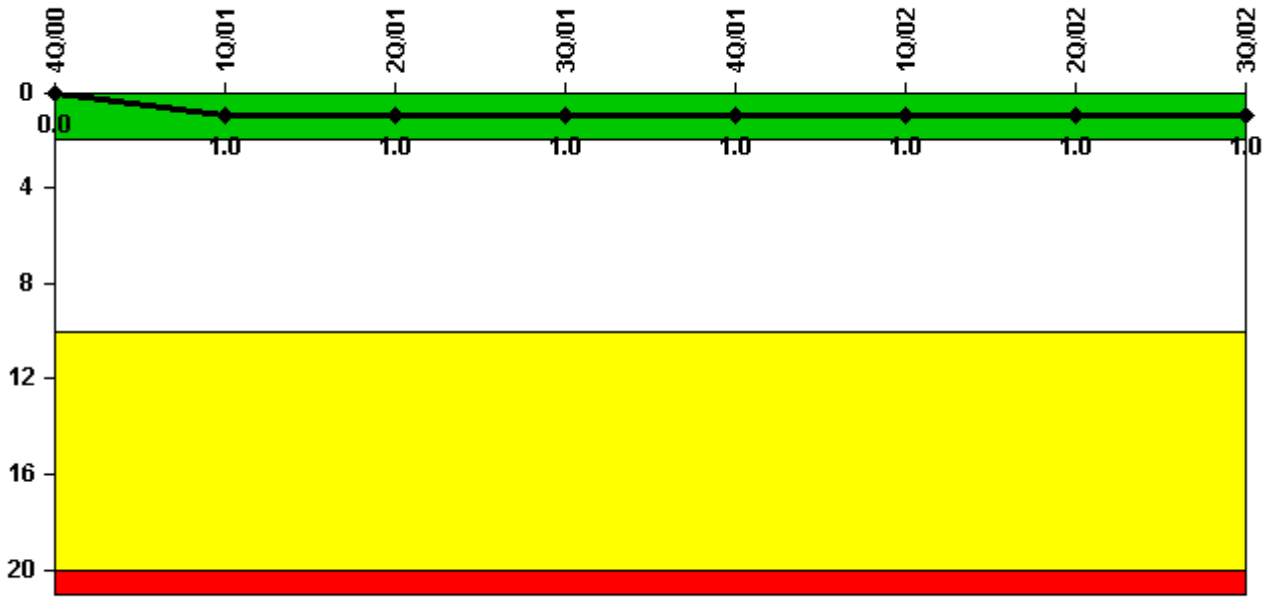
Thresholds: White > 3.0 Yellow > 6.0 Red > 25.0

Notes

Unplanned Scrams per 7000 Critical Hrs	4Q/00	1Q/01	2Q/01	3Q/01	4Q/01	1Q/02	2Q/02	3Q/02
Unplanned scrams	0	1.0	0	0	1.0	0	0	0
Critical hours	483.9	1310.4	2183.0	2208.0	2108.0	2160.0	1553.7	2208.0
Indicator value	1.0	2.3	1.1	1.1	1.8	0.8	0.9	0.9

Licensee Comments: none

Scrams with Loss of Normal Heat Removal



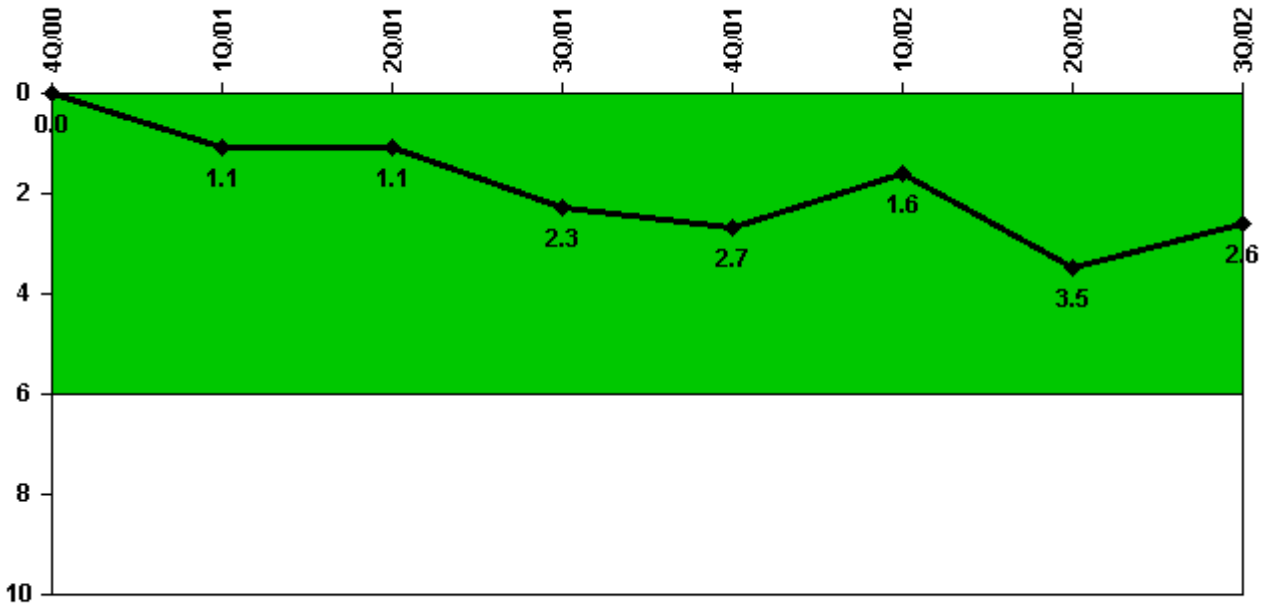
Thresholds: White > 2.0 Yellow > 10.0 Red > 20.0

Notes

Scrams with Loss of Normal Heat Removal	4Q/00	1Q/01	2Q/01	3Q/01	4Q/01	1Q/02	2Q/02	3Q/02
Scrams	0	1.0	0	0	0	0	0	0
Indicator value	0	1.0	1.0	1.0	1.0	1.0	1.0	1.0

Licensee Comments: none

Unplanned Power Changes per 7000 Critical Hrs



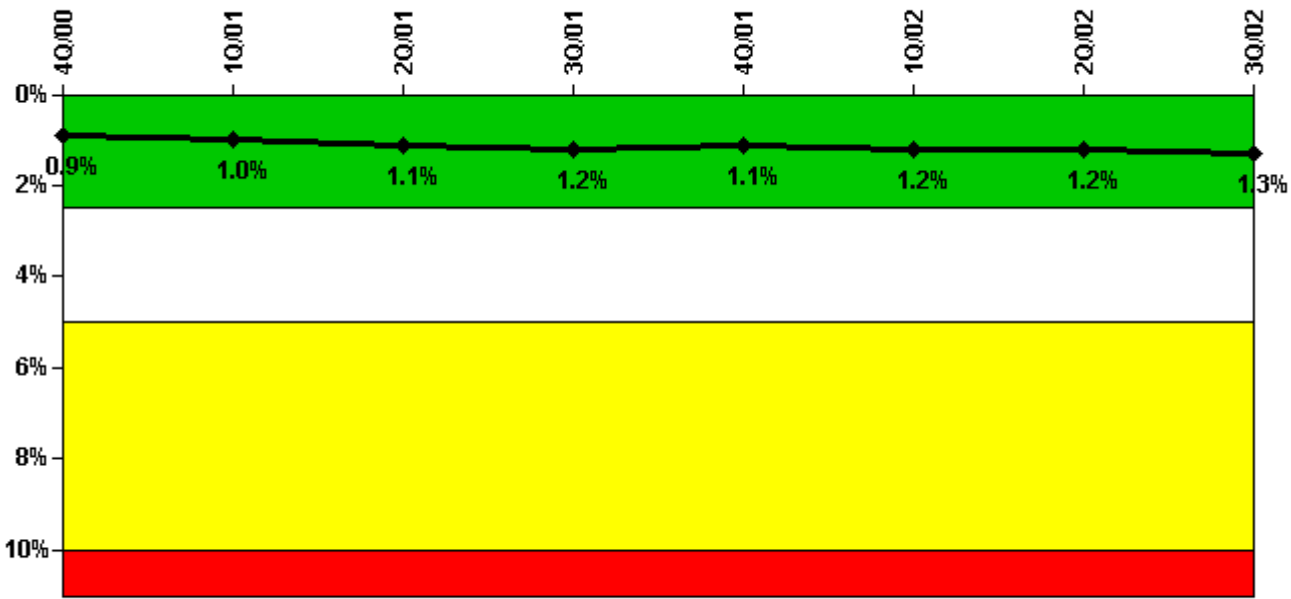
Thresholds: White > 6.0

Notes

Unplanned Power Changes per 7000 Critical Hrs	4Q/00	1Q/01	2Q/01	3Q/01	4Q/01	1Q/02	2Q/02	3Q/02
Unplanned power changes	0	1.0	0	1.0	1.0	0	2.0	0
Critical hours	483.9	1310.4	2183.0	2208.0	2108.0	2160.0	1553.7	2208.0
Indicator value	0	1.1	1.1	2.3	2.7	1.6	3.5	2.6

Licensee Comments: none

Safety System Unavailability, Emergency AC Power



Thresholds: White > 2.5% Yellow > 5.0% Red > 10.0%

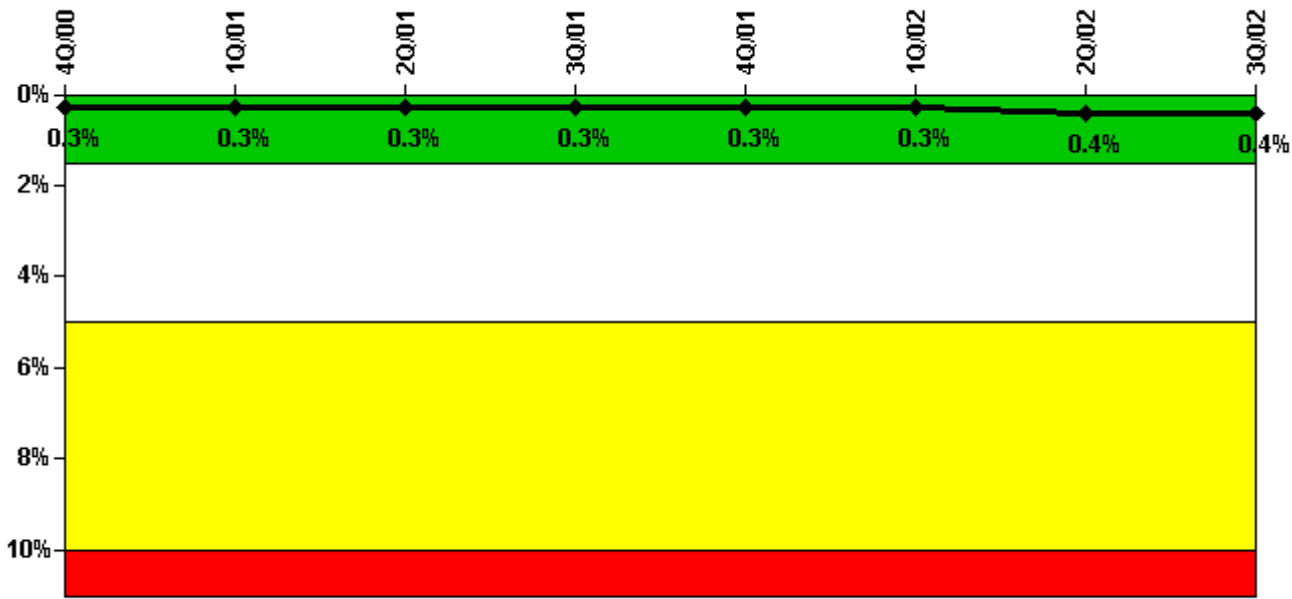
Notes

Safety System Unavailability, Emergency AC Power	4Q/00	1Q/01	2Q/01	3Q/01	4Q/01	1Q/02	2Q/02	3Q/02
Train 1								
Planned unavailable hours	1.73	17.78	13.87	1.70	6.60	36.65	14.59	17.57
Unplanned unavailable hours	0	0	4.30	0	0	0	8.51	16.32
Fault exposure hours	0	0	0	0	0	0	0	0
Effective Reset hours	0	0	0	0	0	0	0	0
Required hours	1497.27	2150.80	2183.00	2208.00	2209.00	2160.00	1869.20	2208.00
Train 2								
Planned unavailable hours	0	10.20	45.37	35.00	12.10	20.82	3.45	5.65
Unplanned unavailable hours	0	0	0	27.20	5.30	0	0.83	82.35
Fault exposure hours	70.28	0	0	0	0	0	0	0
Effective Reset hours	0	0	0	0	0	0	0	0
Required hours	586.00	1608.60	2183.00	2208.00	2209.00	2160.00	1869.20	2208.00
Indicator value	0.9%	1.0%	1.1%	1.2%	1.1%	1.2%	1.2%	1.3%

Licensee Comments:

4Q/00: Entered Fault Exposure Hours in accordance with NRC Inspection Report 2000-11.

Safety System Unavailability, High Pressure Injection System (HPSI)



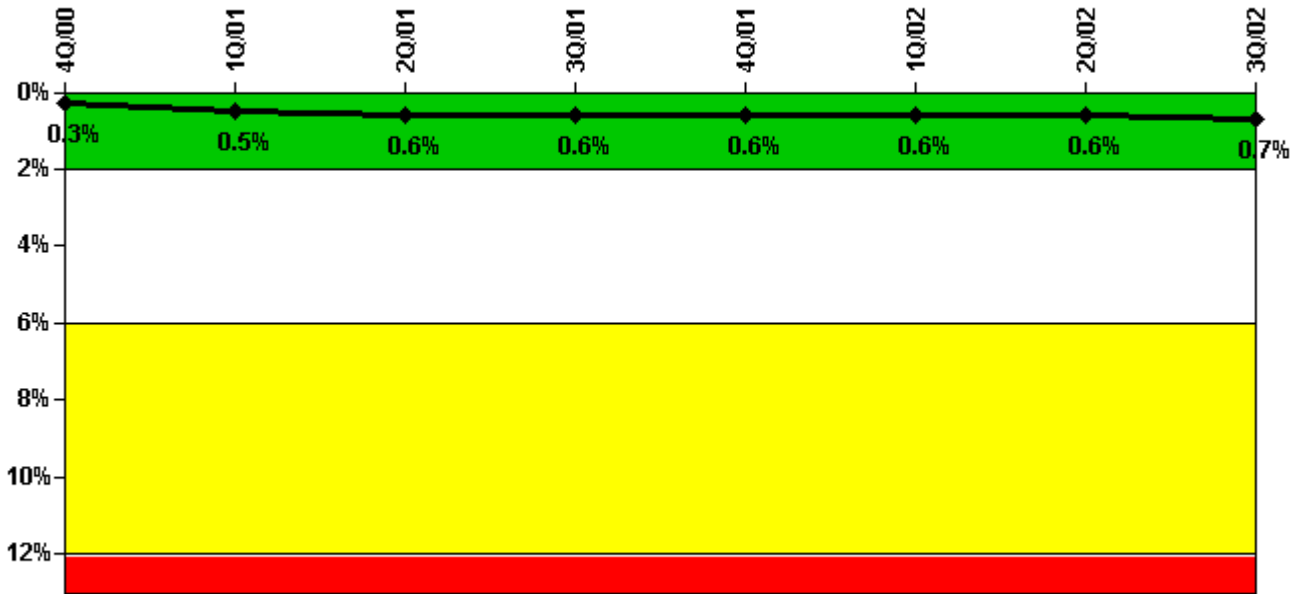
Thresholds: White > 1.5% Yellow > 5.0% Red > 10.0%

Notes

Safety System Unavailability, High Pressure Injection System (HPSI)	4Q/00	1Q/01	2Q/01	3Q/01	4Q/01	1Q/02	2Q/02	3Q/02
Train 1								
Planned unavailable hours	0	7.07	0	17.30	12.50	6.11	1.52	1.62
Unplanned unavailable hours	0	0	0	0	0	0	0	0
Fault exposure hours	0	0	0	0	0	0	0	0
Effective Reset hours	0	0	0	0	0	0	0	0
Required hours	498.25	1697.20	2183.00	2208.00	2209.00	2160.00	1617.80	2208.00
Train 2								
Planned unavailable hours	0	0	37.96	0	4.40	14.65	2.80	1.32
Unplanned unavailable hours	0	0	0	0	0	0	0	0
Fault exposure hours	0	0	0	0	0	0	0	0
Effective Reset hours	0	0	0	0	0	0	0	0
Required hours	498.25	1697.20	2183.00	2208.00	2209.00	2160.00	1617.80	2208.00
Train 3								
Planned unavailable hours	0	3.32	0	0	0	23.39	18.20	1.80
Unplanned unavailable hours	0	0	0	0	0	0	0	0
Fault exposure hours	0	0	0	0	0	0	0	0
Effective Reset hours	0	0	0	0	0	0	0	0
Required hours	498.25	1409.00	2183.00	2208.00	2209.00	2160.00	1608.70	2208.00
Train 4								
Planned unavailable hours	0	0.72	13.70	26.80	0	14.18	21.14	12.45
Unplanned unavailable hours	0	0	0.10	0	0	0	0	0
Fault exposure hours	0	0	0	0	0	0	0	0
Effective Reset hours	0	0	0	0	0	0	0	0
Required hours	498.25	1409.00	2183.00	2208.00	2209.00	2160.00	1608.70	2208.00
Indicator value	0.3%	0.3%	0.3%	0.3%	0.3%	0.3%	0.4%	0.4%

Licensee Comments: none

Safety System Unavailability, Heat Removal System (AFW)



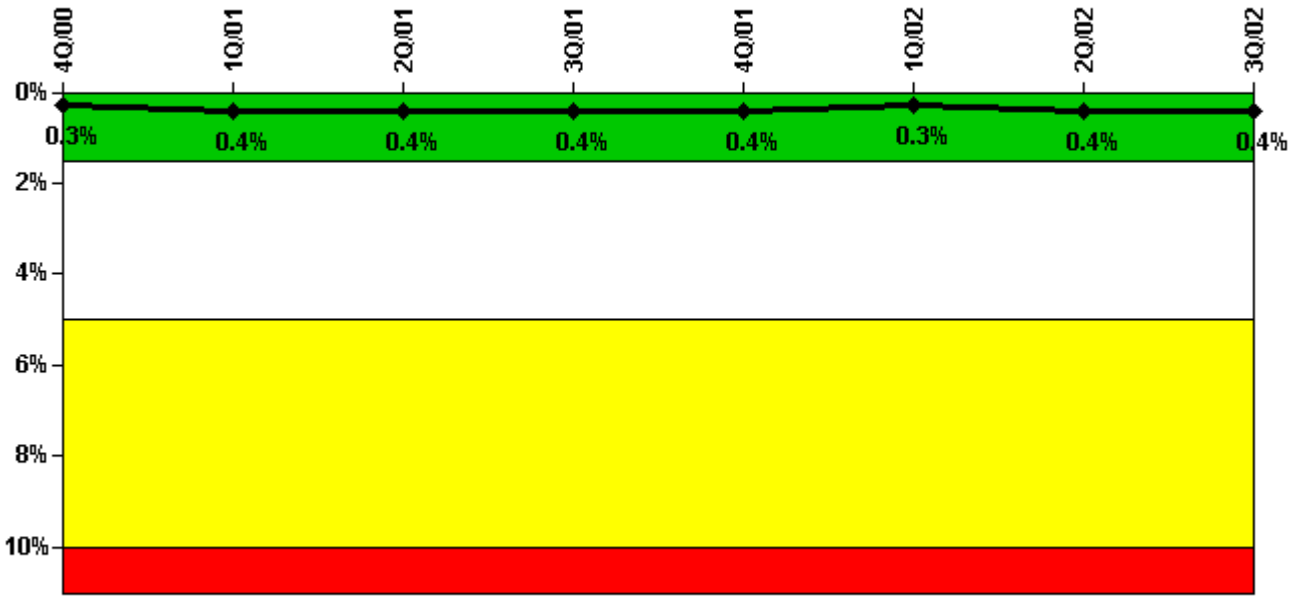
Thresholds: White > 2.0% Yellow > 6.0% Red > 12.0%

Notes

Safety System Unavailability, Heat Removal System (AFW)	4Q/00	1Q/01	2Q/01	3Q/01	4Q/01	1Q/02	2Q/02	3Q/02
Train 1								
Planned unavailable hours	0	15.46	43.71	20.00	1.80	13.13	18.68	8.66
Unplanned unavailable hours	0	28.52	0	0	0	0	12.46	0
Fault exposure hours	0	64.55	0	0	0	0	0	0
Effective Reset hours	0	0	0	0	0	0	0	0
Required hours	498.25	1409.00	2183.00	2208.00	2209.00	2160.00	1608.70	2208.00
Train 2								
Planned unavailable hours	0	5.10	20.04	1.90	4.10	2.30	14.57	0
Unplanned unavailable hours	0	0.38	0	0	0	0	0.48	0
Fault exposure hours	0	0	0	0	0	0	0	0
Effective Reset hours	0	0	0	0	0	0	0	0
Required hours	498.25	1409.00	2183.00	2208.00	2209.00	2160.00	1608.70	2208.00
Indicator value	0.3%	0.5%	0.6%	0.6%	0.6%	0.6%	0.6%	0.7%

Licensee Comments: none

Safety System Unavailability, Residual Heat Removal System



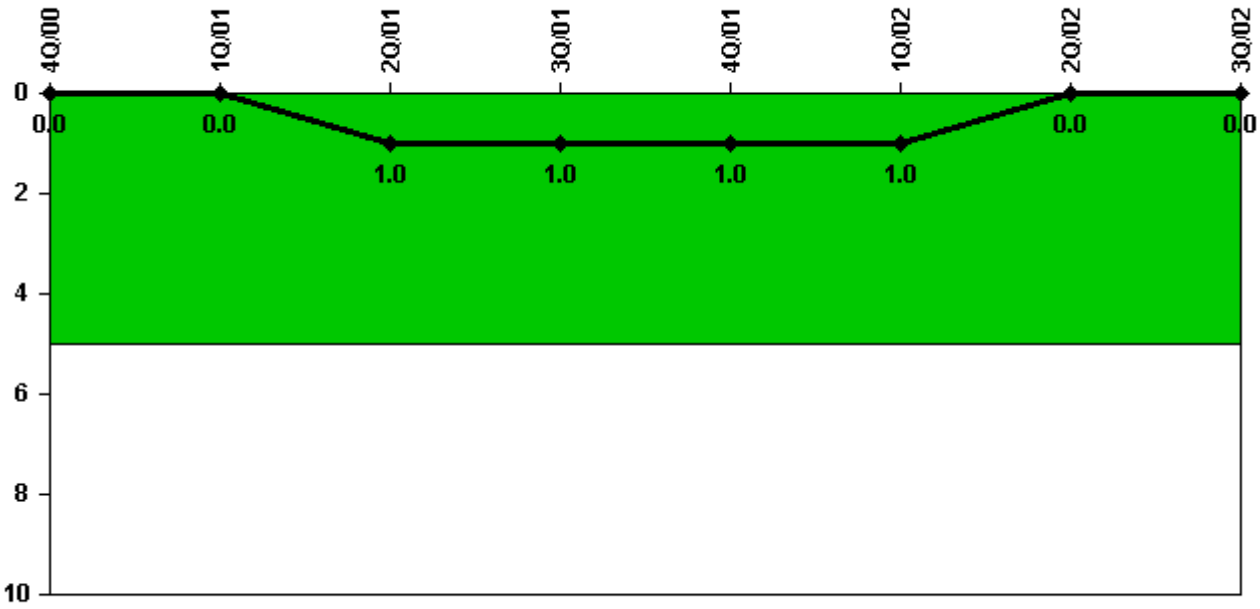
Thresholds: White > 1.5% Yellow > 5.0% Red > 10.0%

Notes

Safety System Unavailability, Residual Heat Removal System	4Q/00	1Q/01	2Q/01	3Q/01	4Q/01	1Q/02	2Q/02	3Q/02
Train 1								
Planned unavailable hours	0.87	3.58	5.02	15.10	3.40	9.32	15.69	19.59
Unplanned unavailable hours	0	0	0	0	0	0	0	0
Fault exposure hours	0	0	0	0	0	0	0	0
Effective Reset hours	0	0	0	0	0	0	0	0
Required hours	1025.46	1871.80	2183.00	2208.00	2209.00	2160.00	2037.00	2208.00
Train 2								
Planned unavailable hours	0.77	12.06	11.50	2.50	10.00	13.17	14.12	14.39
Unplanned unavailable hours	0	0	0	0	0	0	0	0
Fault exposure hours	0	0	0	0	0	0	0	0
Effective Reset hours	0	0	0	0	0	0	0	0
Required hours	1025.46	1871.80	2183.00	2208.00	2209.00	2160.00	2037.00	2208.00
Indicator value	0.3%	0.4%	0.4%	0.4%	0.4%	0.3%	0.4%	0.4%

Licensee Comments: none

Safety System Functional Failures (PWR)



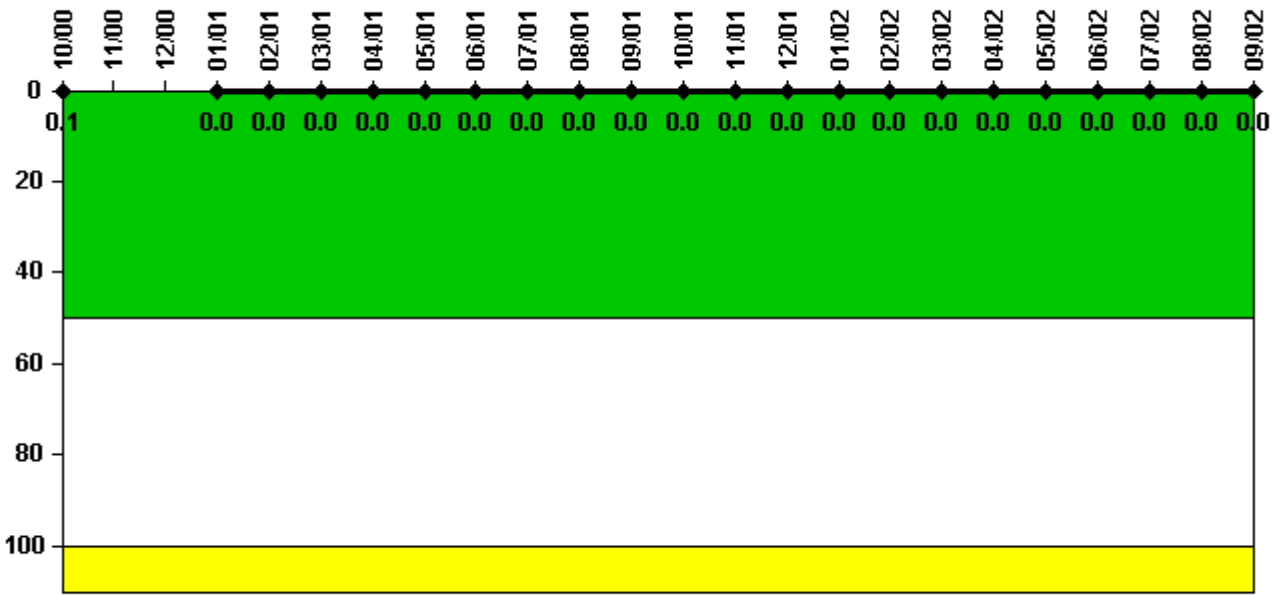
Thresholds: White > 5.0

Notes

Safety System Functional Failures (PWR)	4Q/00	1Q/01	2Q/01	3Q/01	4Q/01	1Q/02	2Q/02	3Q/02
Safety System Functional Failures	0	0	1	0	0	0	0	0
Indicator value	0	0	1	1	1	1	0	0

Licensee Comments: none

Reactor Coolant System Activity



Thresholds: White > 50.0 Yellow > 100.0

Notes

Reactor Coolant System Activity	10/00	11/00	12/00	1/01	2/01	3/01	4/01	5/01	6/01	7/01	8/01	9/01
Maximum activity	0.000700	N/A	N/A	0.000138	0.000362	0.000234	0.000280	0.000280	0.000440	0.000332	0.000356	0.000300
Technical specification limit	1.0	1.0	1.0	1.0	1.0	1.0	1.0	1.0	1.0	1.0	1.0	1.0
Indicator value	0.1	N/A	N/A	0	0	0	0	0	0	0	0	0

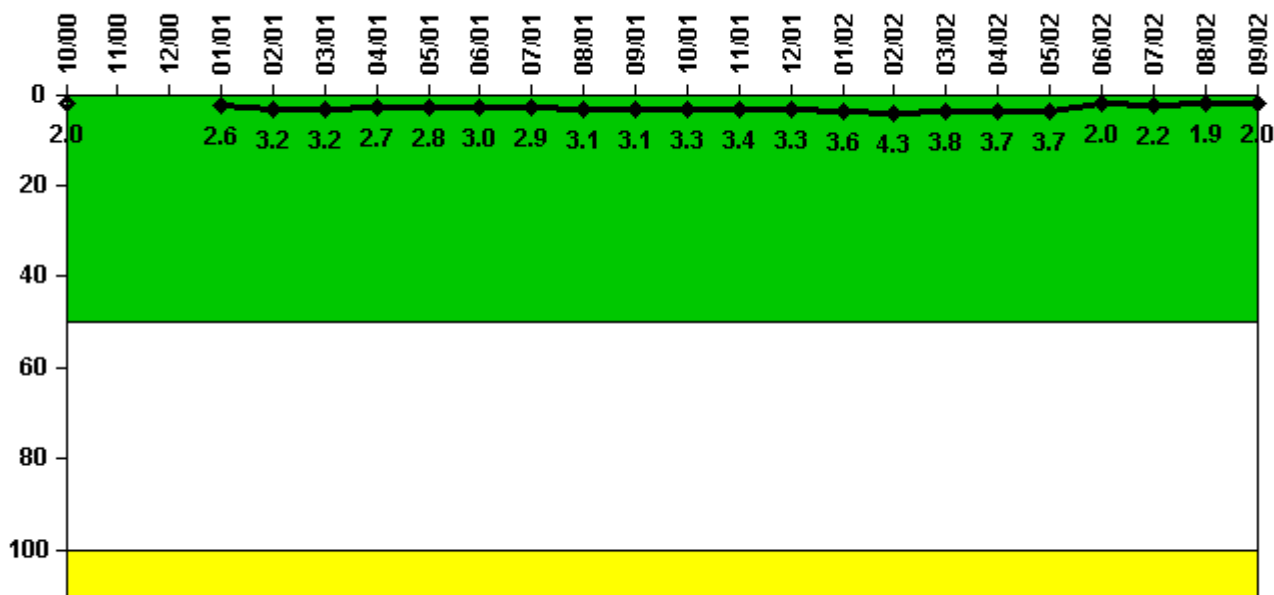
Reactor Coolant System Activity	10/01	11/01	12/01	1/02	2/02	3/02	4/02	5/02	6/02	7/02	8/02	9/02
Maximum activity	0.000326	0.000464	0.000400	0.000405	0.000395	0.000401	0.000448	0	0.000142	0.000165	0.000164	0.000177
Technical specification limit	1.0	1.0	1.0	1.0	1.0	1.0	1.0	1.0	1.0	1.0	1.0	1.0
Indicator value	0	0	0	0	0	0	0	0	0	0	0	0

Licensee Comments:

6/02: Revised June Data from .000161 to the value of .000142.

9/01: Revised August data from .00194 to value of .000356.

Reactor Coolant System Leakage



Thresholds: White > 50.0 Yellow > 100.0

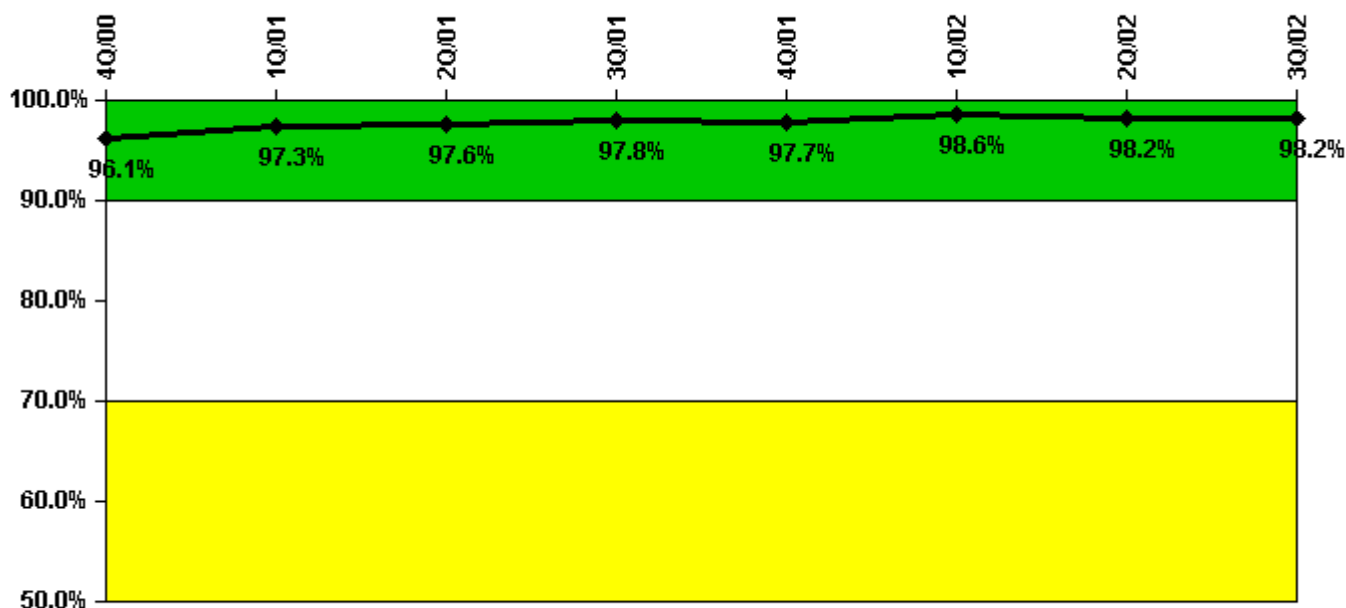
Notes

Reactor Coolant System Leakage	10/00	11/00	12/00	1/01	2/01	3/01	4/01	5/01	6/01	7/01	8/01	9/01
Maximum leakage	0.200	N/A	N/A	0.260	0.320	0.320	0.270	0.280	0.300	0.290	0.310	0.310
Technical specification limit	10.0	10.0	10.0	10.0	10.0	10.0	10.0	10.0	10.0	10.0	10.0	10.0
Indicator value	2.0	N/A	N/A	2.6	3.2	3.2	2.7	2.8	3.0	2.9	3.1	3.1

Reactor Coolant System Leakage	10/01	11/01	12/01	1/02	2/02	3/02	4/02	5/02	6/02	7/02	8/02	9/02
Maximum leakage	0.330	0.340	0.330	0.360	0.430	0.380	0.370	0.370	0.200	0.220	0.190	0.200
Technical specification limit	10.0	10.0	10.0	10.0	10.0	10.0	10.0	10.0	10.0	10.0	10.0	10.0
Indicator value	3.3	3.4	3.3	3.6	4.3	3.8	3.7	3.7	2.0	2.2	1.9	2.0

Licensee Comments: none

Drill/Exercise Performance



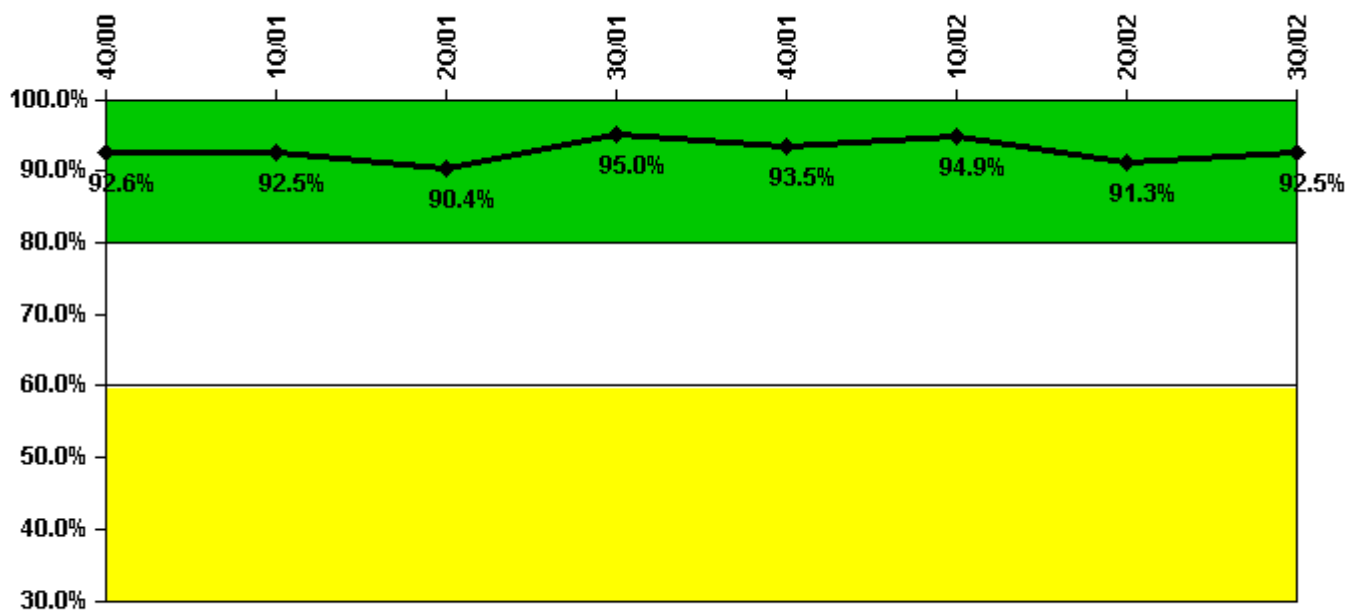
Thresholds: White < 90.0% Yellow < 70.0%

Notes

Drill/Exercise Performance	4Q/00	1Q/01	2Q/01	3Q/01	4Q/01	1Q/02	2Q/02	3Q/02
Successful opportunities	32.0	13.0	26.0	20.0	29.0	14.0	5.0	26.0
Total opportunities	34.0	13.0	26.0	20.0	30.0	14.0	5.0	26.0
Indicator value	96.1%	97.3%	97.6%	97.8%	97.7%	98.6%	98.2%	98.2%

Licensee Comments: none

ERO Drill Participation



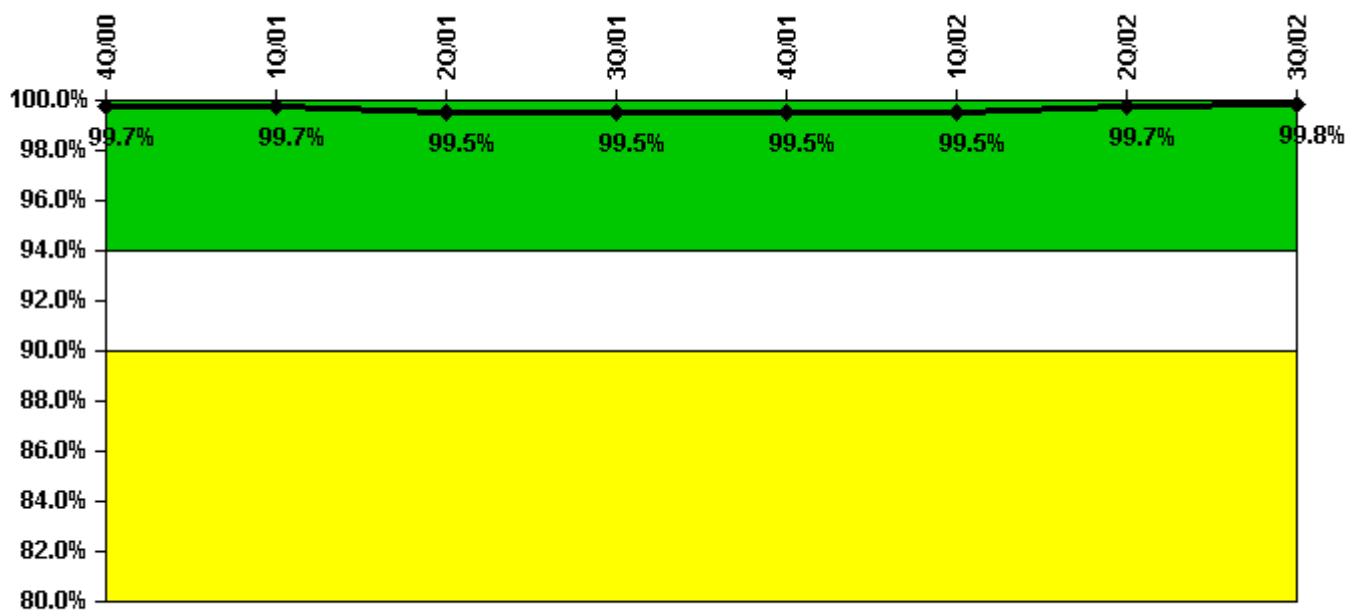
Thresholds: White < 80.0% Yellow < 60.0%

Notes

ERO Drill Participation	4Q/00	1Q/01	2Q/01	3Q/01	4Q/01	1Q/02	2Q/02	3Q/02
Participating Key personnel	88.0	86.0	85.0	76.0	72.0	75.0	73.0	74.0
Total Key personnel	95.0	93.0	94.0	80.0	77.0	79.0	80.0	80.0
Indicator value	92.6%	92.5%	90.4%	95.0%	93.5%	94.9%	91.3%	92.5%

Licensee Comments: none

Alert & Notification System



Thresholds: White < 94.0% Yellow < 90.0%

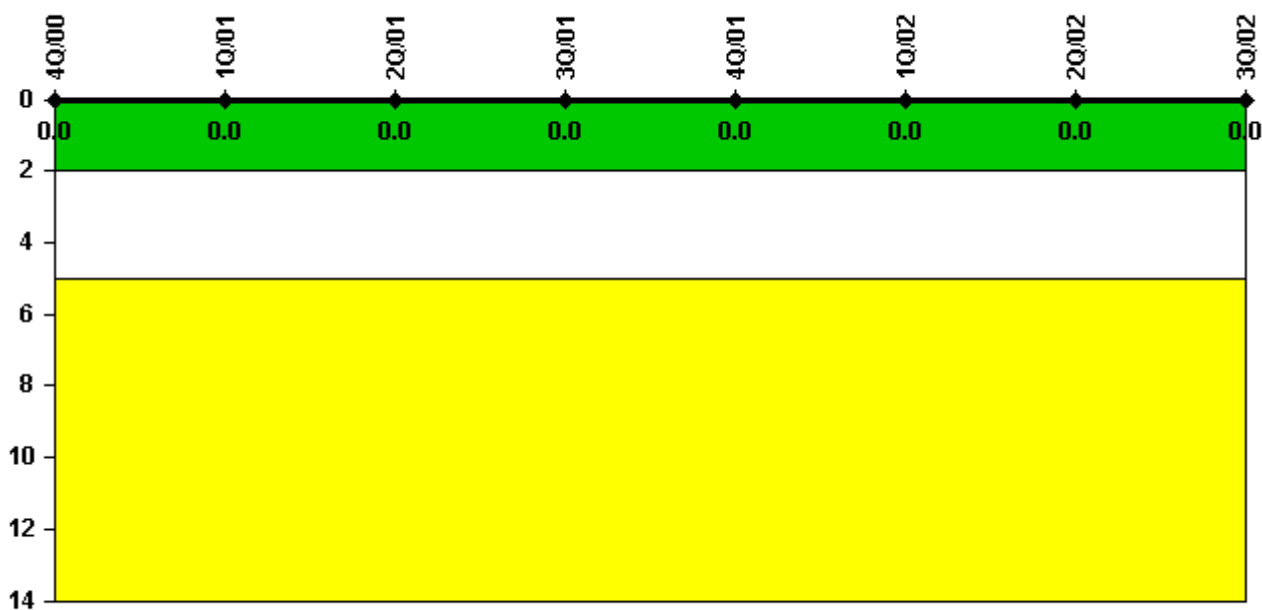
Notes

Alert & Notification System	4Q/00	1Q/01	2Q/01	3Q/01	4Q/01	1Q/02	2Q/02	3Q/02
Successful siren-tests	846	725	840	720	846	844	725	846
Total sirens-tests	847	726	847	726	847	847	726	847
Indicator value	99.7%	99.7%	99.5%	99.5%	99.5%	99.5%	99.7%	99.8%

Licensee Comments:

3Q/02: There were three test cycles in the Month of September.

Occupational Exposure Control Effectiveness



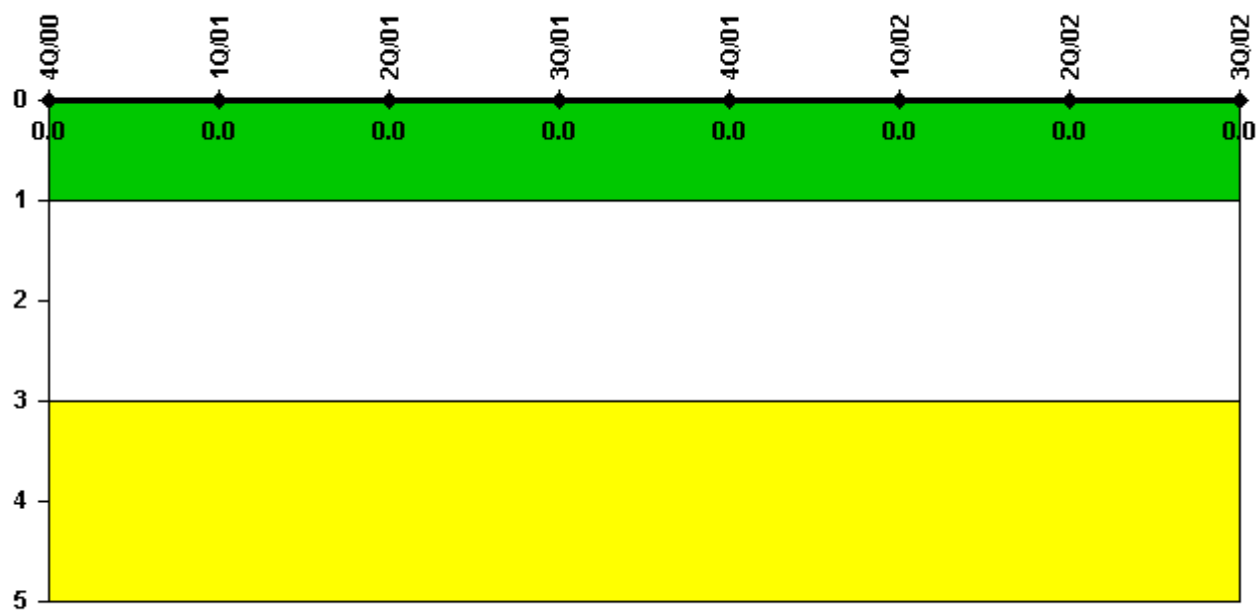
Thresholds: White > 2.0 Yellow > 5.0

Notes

Occupational Exposure Control Effectiveness	4Q/00	1Q/01	2Q/01	3Q/01	4Q/01	1Q/02	2Q/02	3Q/02
High radiation area occurrences	0	0	0	0	0	0	0	0
Very high radiation area occurrences	0	0	0	0	0	0	0	0
Unintended exposure occurrences	0	0	0	0	0	0	0	0
Indicator value	0	0	0	0	0	0	0	0

Licensee Comments: none

RETS/ODCM Radiological Effluent



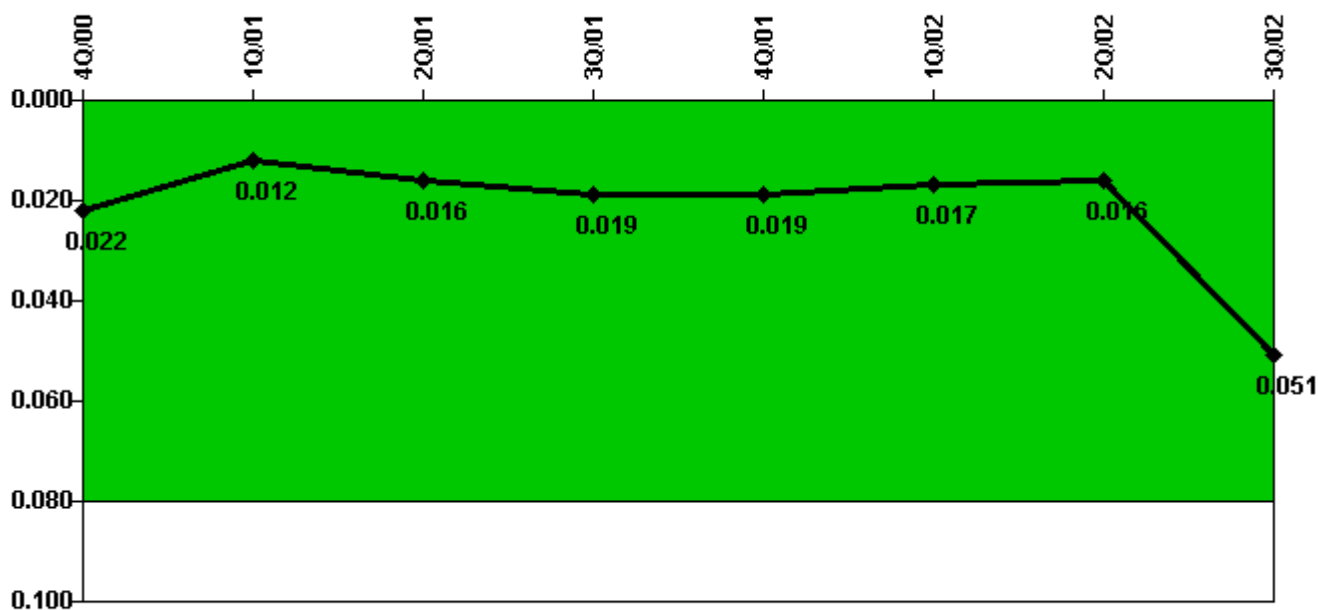
Thresholds: White > 1.0 Yellow > 3.0

Notes

RETS/ODCM Radiological Effluent	4Q/00	1Q/01	2Q/01	3Q/01	4Q/01	1Q/02	2Q/02	3Q/02
RETS/ODCM occurrences	0	0	0	0	0	0	0	0
Indicator value	0	0	0	0	0	0	0	0

Licensee Comments: none

Protected Area Security Performance Index



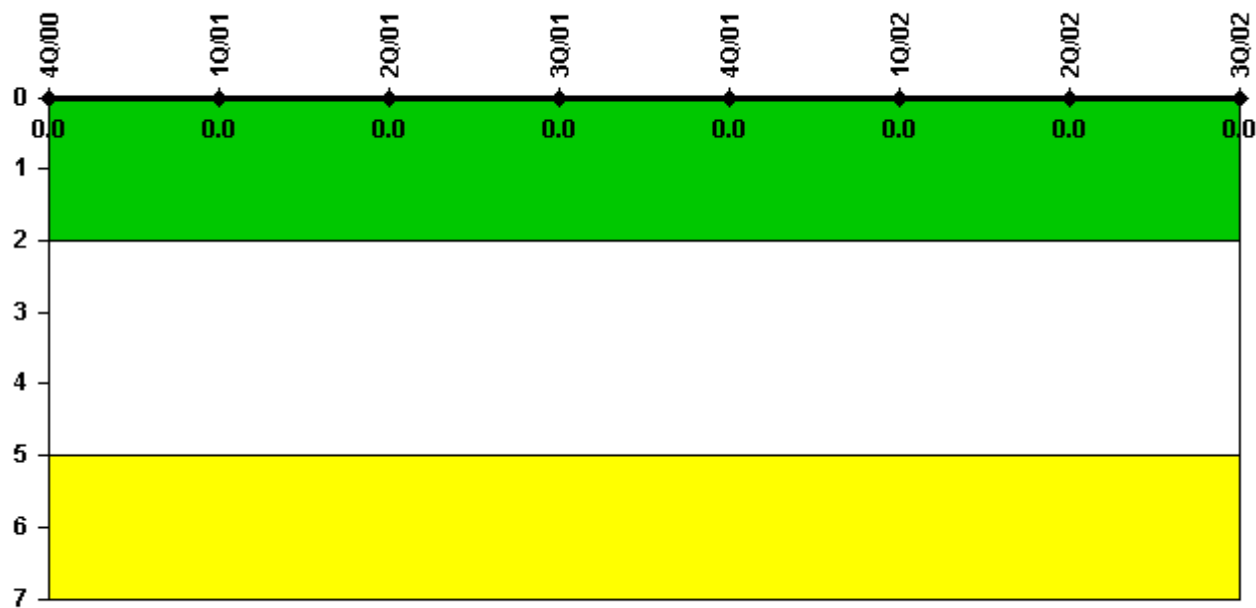
Thresholds: White > 0.080

Notes

Protected Area Security Performance Index	4Q/00	1Q/01	2Q/01	3Q/01	4Q/01	1Q/02	2Q/02	3Q/02
IDS compensatory hours	40.70	91.10	114.60	187.30	48.90	39.50	78.80	983.30
CCTV compensatory hours	0	0	0	0	0	0	0	0
IDS normalization factor	1.30	1.30	1.30	1.30	1.30	1.30	1.30	1.30
CCTV normalization factor	1.0	1.0	1.0	1.0	1.0	1.0	1.0	1.0
Index Value	0.022	0.012	0.016	0.019	0.019	0.017	0.016	0.051

Licensee Comments: none

Personnel Screening Program



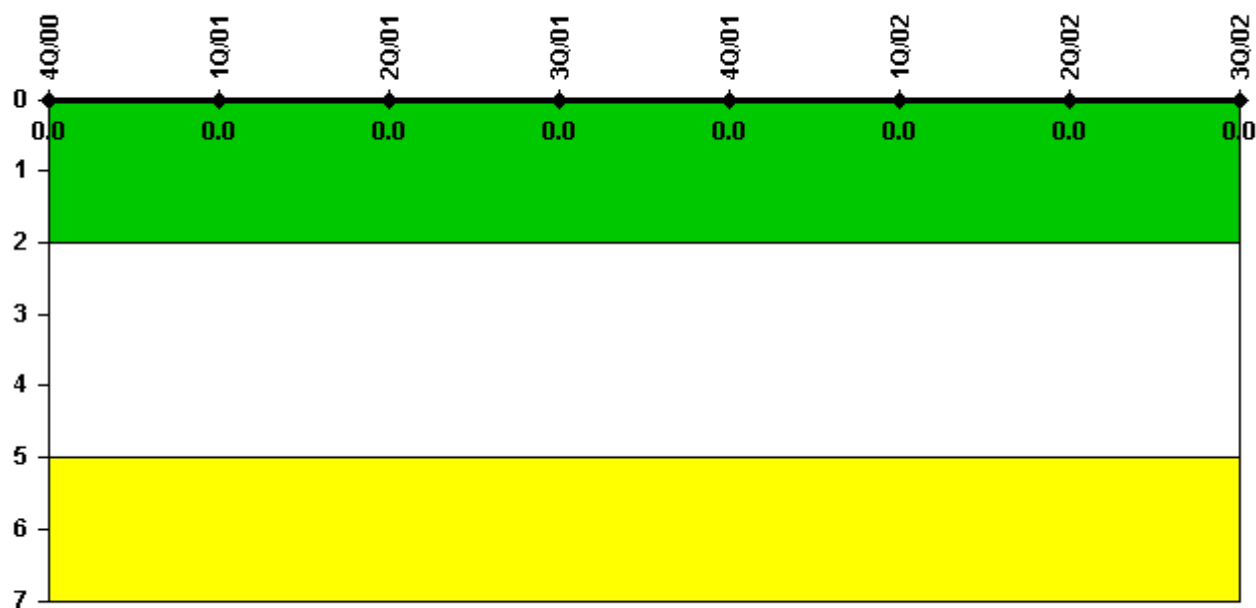
Thresholds: White > 2.0 Yellow > 5.0

Notes

Personnel Screening Program	4Q/00	1Q/01	2Q/01	3Q/01	4Q/01	1Q/02	2Q/02	3Q/02
Program failures	0	0	0	0	0	0	0	0
Indicator value	0	0	0	0	0	0	0	0

Licensee Comments: none

FFD/Personnel Reliability



Thresholds: White > 2.0 Yellow > 5.0

Notes

FFD/Personnel Reliability	4Q/00	1Q/01	2Q/01	3Q/01	4Q/01	1Q/02	2Q/02	3Q/02
Program Failures	0	0	0	0	0	0	0	0
Indicator value	0	0	0	0	0	0	0	0

Licensee Comments: none

▲ [PI Summary](#) | [Inspection Findings Summary](#) | [Reactor Oversight Process](#)

Last Modified: October 22, 2002