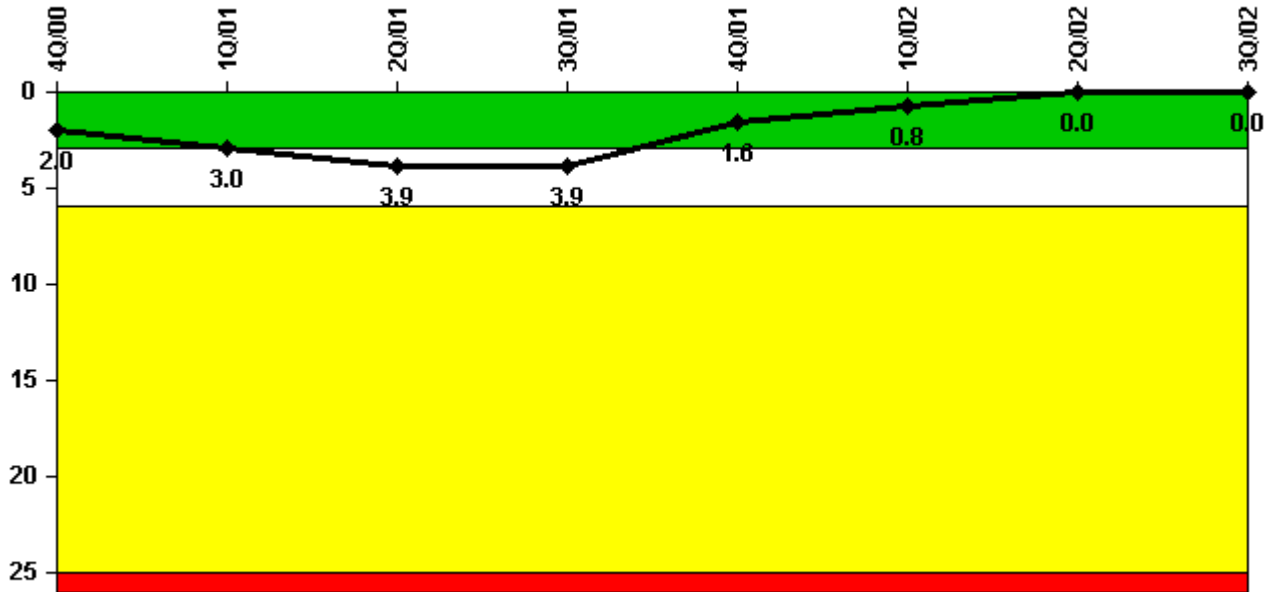


Point Beach 2

3Q/2002 Performance Indicators

Licensee's General Comments: none

Unplanned Scrams per 7000 Critical Hrs



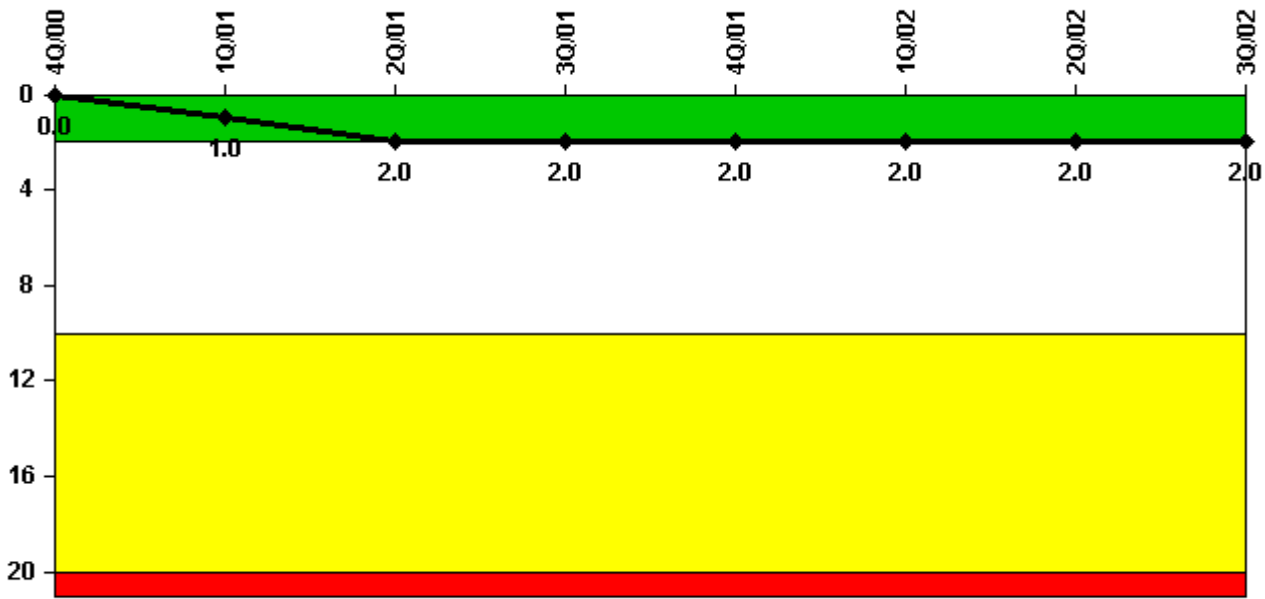
Thresholds: White > 3.0 Yellow > 6.0 Red > 25.0

Notes

Unplanned Scrams per 7000 Critical Hrs	4Q/00	1Q/01	2Q/01	3Q/01	4Q/01	1Q/02	2Q/02	3Q/02
Unplanned scrams	2.0	1.0	1.0	0	0	0	0	0
Critical hours	688.7	2119.8	2143.2	2208.0	2209.0	2096.6	1458.0	2208.0
Indicator value	2.0	3.0	3.9	3.9	1.6	0.8	0	0

Licensee Comments: none

Scrams with Loss of Normal Heat Removal



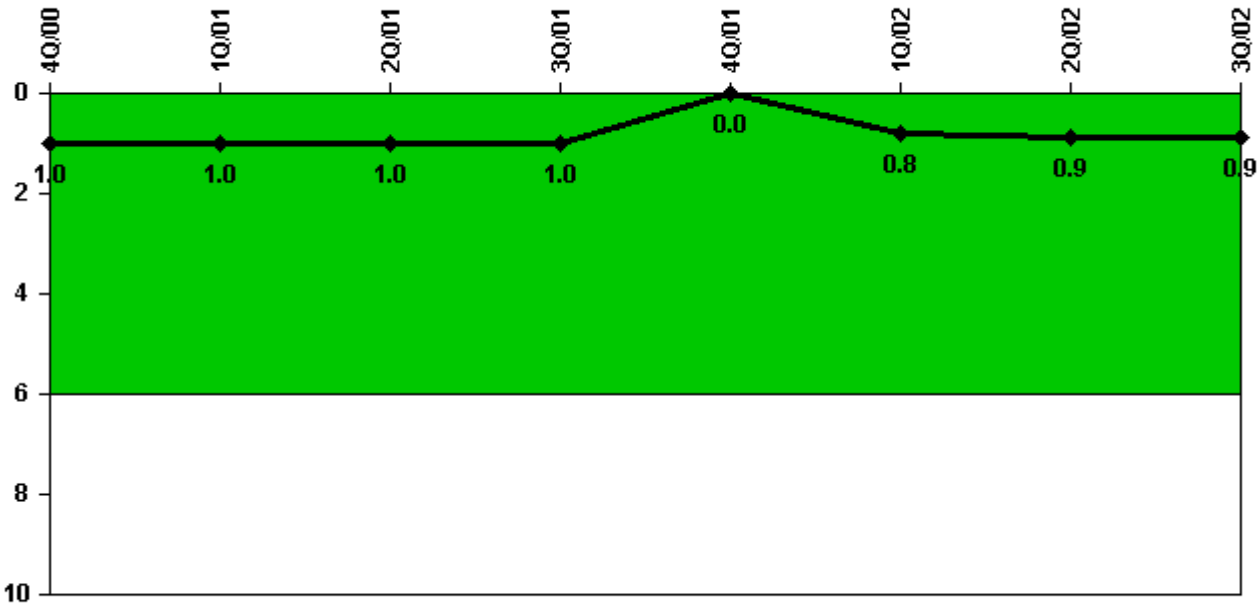
Thresholds: White > 2.0 Yellow > 10.0 Red > 20.0

Notes

Scrams with Loss of Normal Heat Removal	4Q/00	1Q/01	2Q/01	3Q/01	4Q/01	1Q/02	2Q/02	3Q/02
Scrams	0	1.0	1.0	0	0	0	0	0
Indicator value	0	1.0	2.0	2.0	2.0	2.0	2.0	2.0

Licensee Comments: none

Unplanned Power Changes per 7000 Critical Hrs



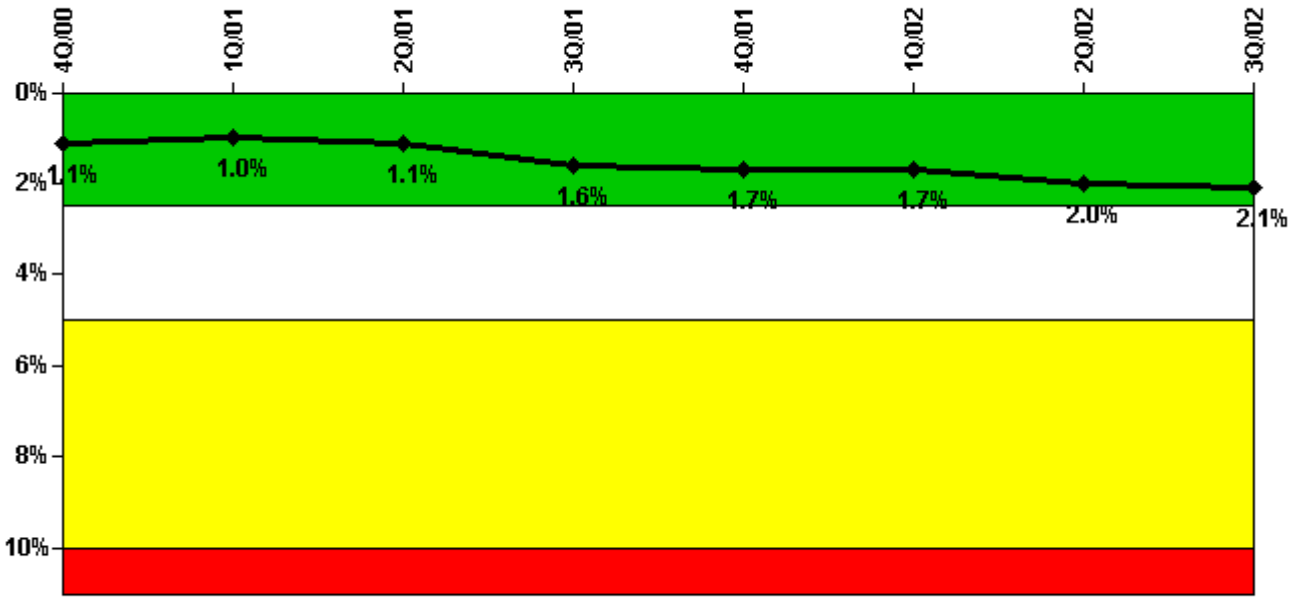
Thresholds: White > 6.0

Notes

Unplanned Power Changes per 7000 Critical Hrs	4Q/00	1Q/01	2Q/01	3Q/01	4Q/01	1Q/02	2Q/02	3Q/02
Unplanned power changes	1.0	0	0	0	0	1.0	0	0
Critical hours	688.7	2119.8	2143.2	2208.0	2209.0	2096.6	1458.0	2208.0
Indicator value	1.0	1.0	1.0	1.0	0	0.8	0.9	0.9

Licensee Comments: none

Safety System Unavailability, Emergency AC Power



Thresholds: White > 2.5% Yellow > 5.0% Red > 10.0%

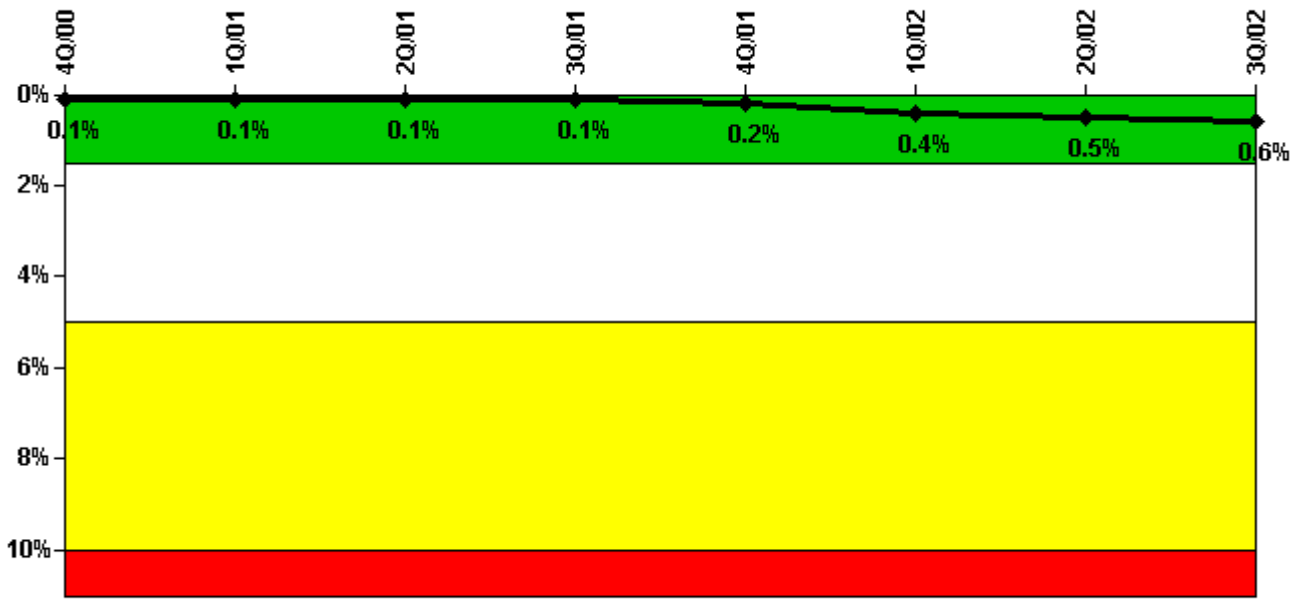
Notes

Safety System Unavailability, Emergency AC Power	4Q/00	1Q/01	2Q/01	3Q/01	4Q/01	1Q/02	2Q/02	3Q/02
Train 1								
Planned unavailable hours	17.70	17.22	23.61	18.78	14.67	60.77	65.21	22.22
Unplanned unavailable hours	0	0	0	0	0.43	0	7.62	0
Fault exposure hours	0	0	0	0	0	0	0	0
Effective Reset hours	0	0	0	0	0	0	0	0
Required hours	2209.00	2160.00	2183.00	2208.00	2209.00	2160.00	2183.00	2208.00
Train 2								
Planned unavailable hours	11.95	35.88	34.30	16.36	62.83	12.02	77.16	31.41
Unplanned unavailable hours	0	0	0	0	0	5.98	0	2.20
Fault exposure hours	0	0	0	333.68	0	0	0	0
Effective Reset hours	0	0	0	0	0	0	0	0
Required hours	2209.00	2160.00	2183.00	2208.00	2209.00	2160.00	2183.00	2208.00
Indicator value	1.1%	1.0%	1.1%	1.6%	1.7%	1.7%	2.0%	2.1%

Licensee Comments:

3Q/01: In applying the resolution of FAQ 318, T/2 fault exposure from the last monthly test prior to August 2001 (a total of 333.68 hours) is now required to be reported in the 3Q01 total unavailability, and has been added.

Safety System Unavailability, High Pressure Injection System (HPSI)



Thresholds: White > 1.5% Yellow > 5.0% Red > 10.0%

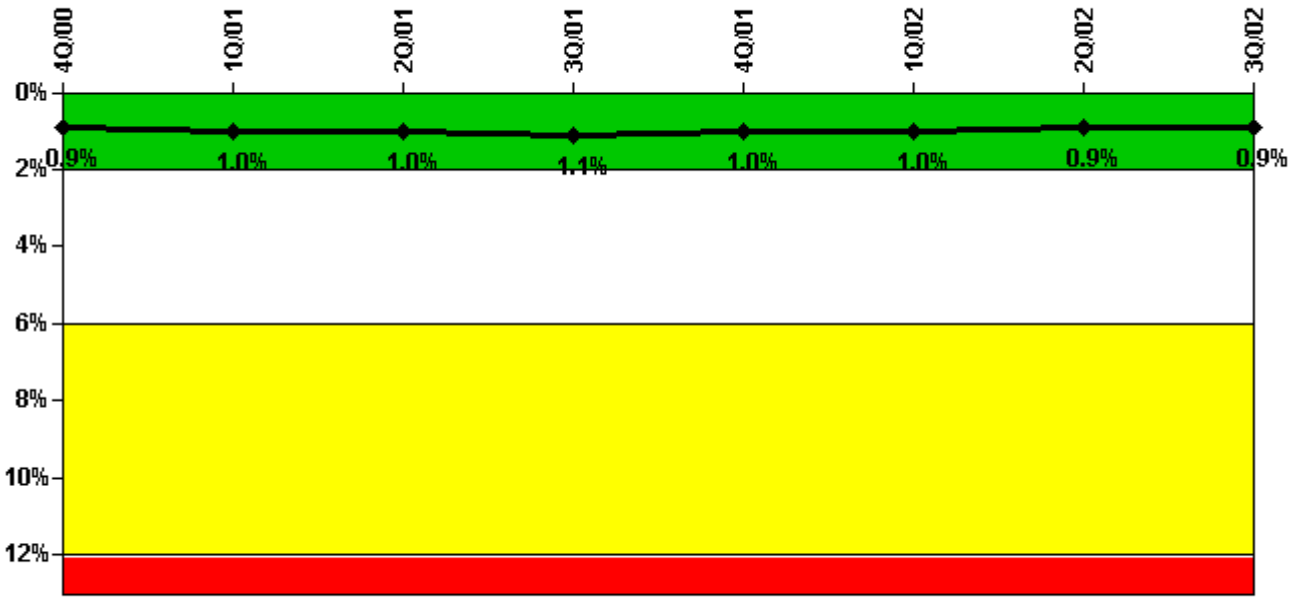
Notes

Safety System Unavailability, High Pressure Injection System (HPSI)	4Q/00	1Q/01	2Q/01	3Q/01	4Q/01	1Q/02	2Q/02	3Q/02
Train 1								
Planned unavailable hours	0.54	2.66	3.20	4.87	11.02	21.05	9.38	9.39
Unplanned unavailable hours	0	0	0	0	0	0	0	0
Fault exposure hours	0	0	0	0	0	0	0	0
Effective Reset hours	0	0	0	0	0	0	0	0
Required hours	688.45	2160.00	2143.20	2208.00	2209.00	2118.00	1541.00	2208.00
Train 2								
Planned unavailable hours	0	0.52	0.77	3.38	8.38	51.46	22.92	8.83
Unplanned unavailable hours	0	0	0	0	0	72.63	0	0
Fault exposure hours	0	0	0	0	0	0	0	0
Effective Reset hours	0	0	0	0	0	0	0	0
Required hours	688.45	2160.00	2143.20	2208.00	2209.00	2118.00	1541.00	2208.00
Indicator value	0.1%	0.1%	0.1%	0.1%	0.2%	0.4%	0.5%	0.6%

Licensee Comments:

1Q/02: T/2 fault exposure of 322.87 hours for half the time between 1/24/02 and 2/20/02 per NEI 99-02, Rev 2. 2P-15B seized upon startup for the monthly motor bearing lubrication run on 2/20/02. The most likely cause is gas binding as a result of check valve leakage. Additional evaluation is in progress. Comment associated with change report submitted on 10/21/2002: A correction to the total hours required for Unit 2 HPSI (Train A) in 1Q02 is being made due to a data entry error.

Safety System Unavailability, Heat Removal System (AFW)



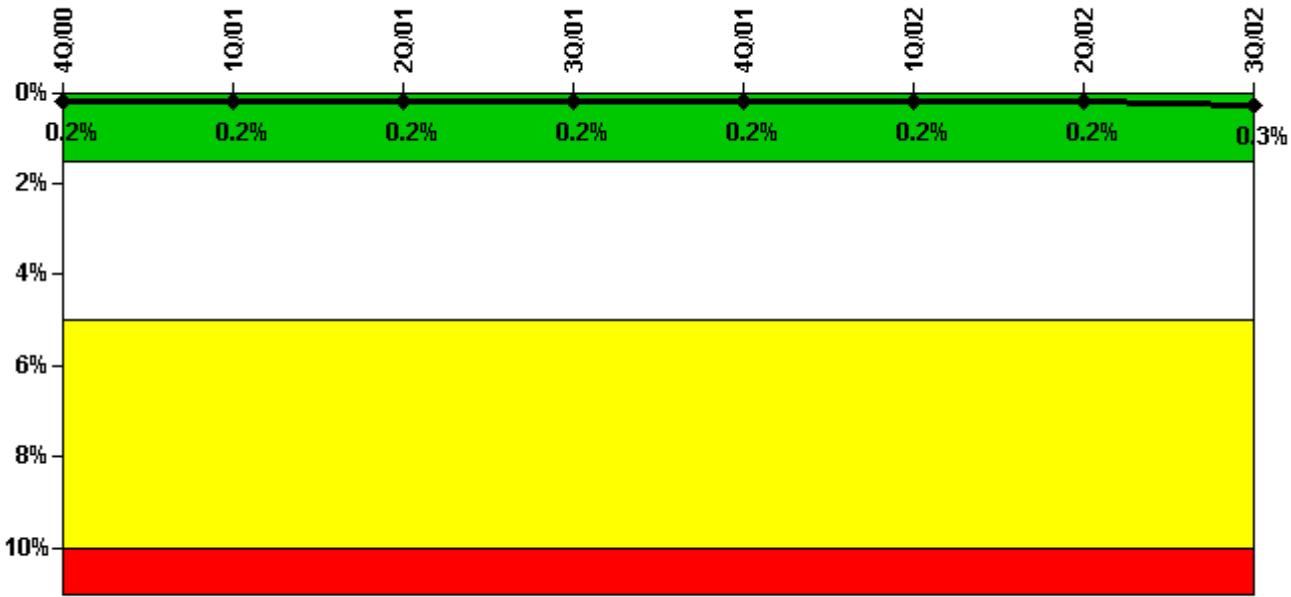
Thresholds: White > 2.0% Yellow > 6.0% Red > 12.0%

Notes

Safety System Unavailability, Heat Removal System (AFW)	4Q/00	1Q/01	2Q/01	3Q/01	4Q/01	1Q/02	2Q/02	3Q/02
Train 1								
Planned unavailable hours	8.13	3.65	8.44	19.14	5.83	27.18	6.01	4.94
Unplanned unavailable hours	1.35	1.17	19.33	0	0	0	0	5.66
Fault exposure hours	0	0	0	0	0	0	0	0
Effective Reset hours	0	0	0	0	0	0	0	0
Required hours	931.85	2160.00	2183.00	2208.00	2209.00	2117.03	1540.99	2208.00
Train 2								
Planned unavailable hours	0.22	23.50	62.40	6.60	3.23	13.06	1.43	32.68
Unplanned unavailable hours	0	16.35	0	0	0	0	0	0.10
Fault exposure hours	0	0	0	0	0	0	0	0
Effective Reset hours	0	0	0	0	0	0	0	0
Required hours	931.85	2160.00	2183.00	2208.00	2209.00	2117.03	1540.99	2208.00
Train 3								
Planned unavailable hours	0.51	5.80	45.20	13.69	2.02	13.82	0.55	7.72
Unplanned unavailable hours	0	0.22	17.58	0	0	8.47	0	0.10
Fault exposure hours	0	0	0	0	0	0	0	0
Effective Reset hours	0	0	0	0	0	0	0	0
Required hours	931.85	2160.00	2183.00	2208.00	2209.00	2117.03	1540.99	2208.00
Indicator value	0.9%	1.0%	1.0%	1.1%	1.0%	1.0%	0.9%	0.9%

Licensee Comments: none

Safety System Unavailability, Residual Heat Removal System



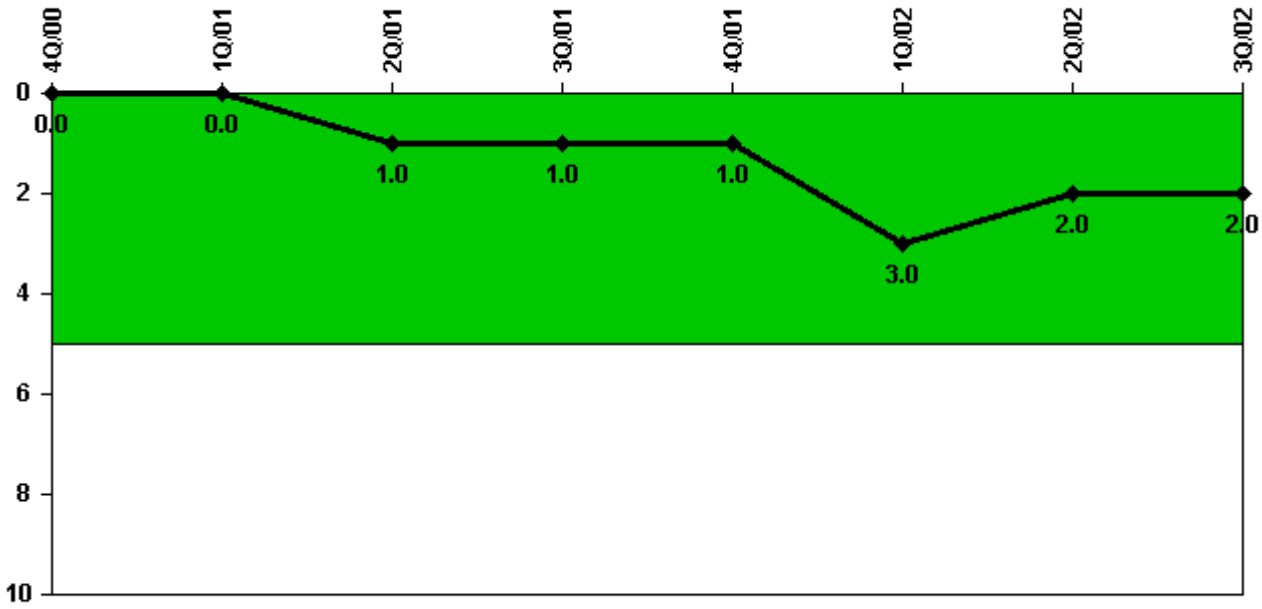
Thresholds: White > 1.5% Yellow > 5.0% Red > 10.0%

Notes

Safety System Unavailability, Residual Heat Removal System	4Q/00	1Q/01	2Q/01	3Q/01	4Q/01	1Q/02	2Q/02	3Q/02
Train 1								
Planned unavailable hours	6.33	1.25	0.92	2.80	8.49	2.27	10.58	20.93
Unplanned unavailable hours	0	0	0	0	0	0	0	0
Fault exposure hours	0	0	0	0	0	0	0	0
Effective Reset hours	0	0	0	0	0	0	0	0
Required hours	1795.87	2119.80	2183.00	2208.00	2209.00	2160.00	2133.28	2208.00
Train 2								
Planned unavailable hours	7.52	1.65	0.78	2.32	6.94	0.59	4.02	1.95
Unplanned unavailable hours	0	0	0	0	0	0	0	0
Fault exposure hours	0	0	0	0	0	0	0	0
Effective Reset hours	0	0	0	0	0	0	0	0
Required hours	1740.32	2119.80	2183.00	2208.00	2209.00	2160.00	2133.28	2208.00
Indicator value	0.2%	0.2%	0.2%	0.2%	0.2%	0.2%	0.2%	0.3%

Licensee Comments: none

Safety System Functional Failures (PWR)



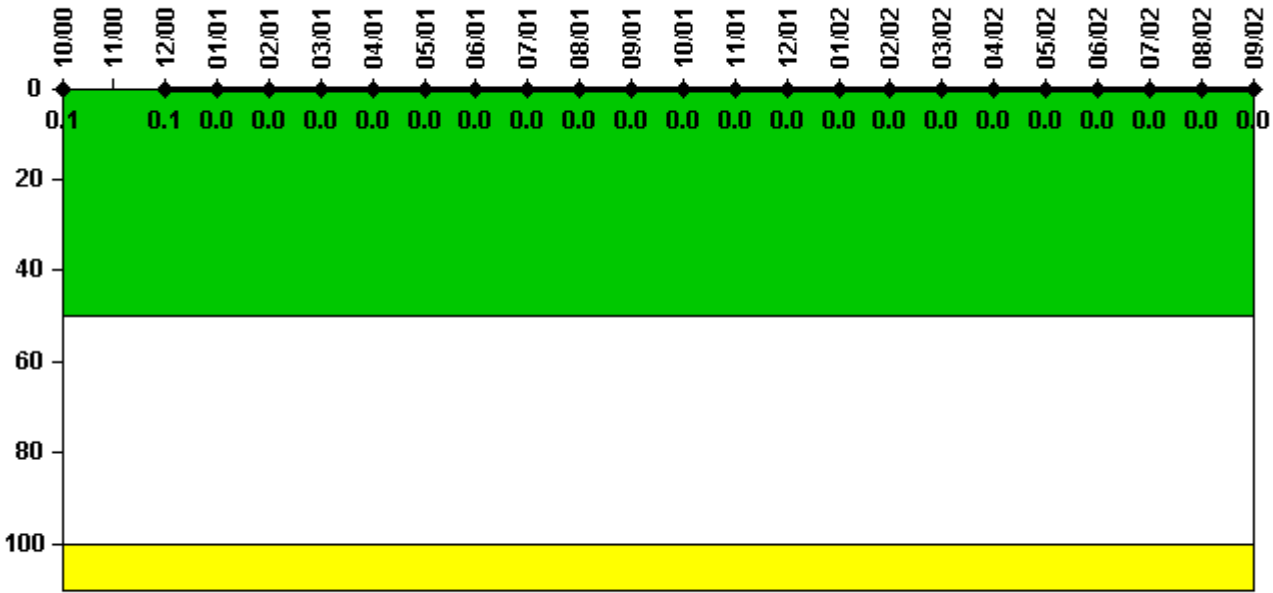
Thresholds: White > 5.0

Notes

Safety System Functional Failures (PWR)	4Q/00	1Q/01	2Q/01	3Q/01	4Q/01	1Q/02	2Q/02	3Q/02
Safety System Functional Failures	0	0	1	0	0	2	0	0
Indicator value	0	0	1	1	1	3	2	2

Licensee Comments: none

Reactor Coolant System Activity



Thresholds: White > 50.0 Yellow > 100.0

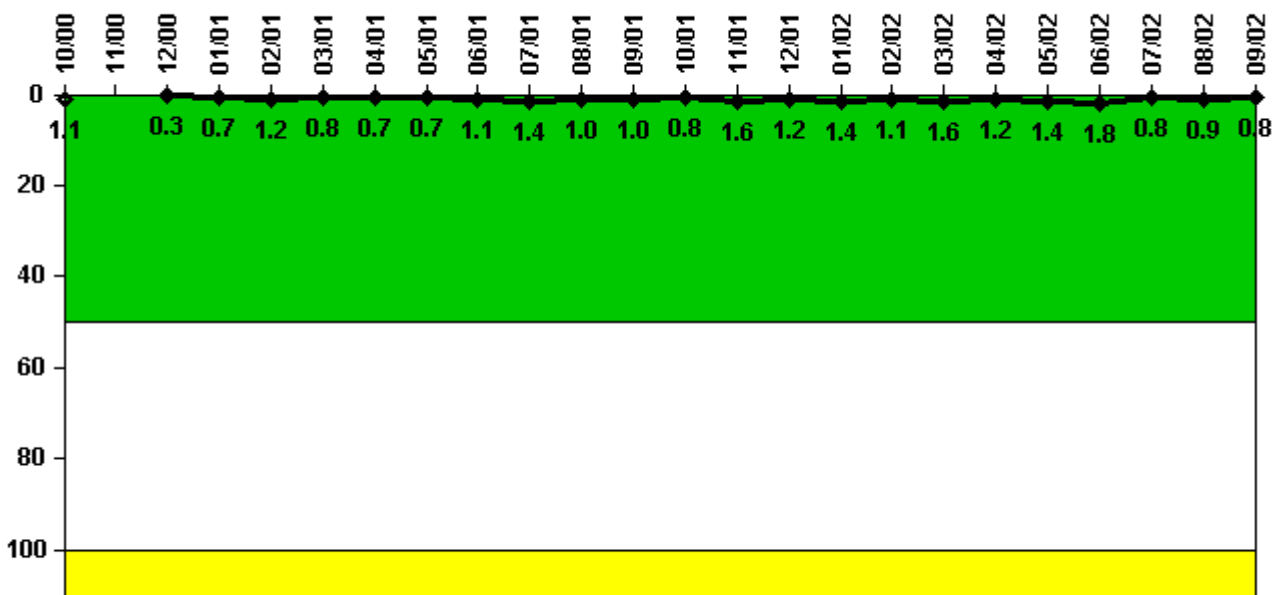
Notes

Reactor Coolant System Activity	10/00	11/00	12/00	1/01	2/01	3/01	4/01	5/01	6/01	7/01	8/01	9/01
Maximum activity	0.000660	N/A	0.000464	0.000243	0.000262	0.000263	0.000294	0.000297	0.000291	0.000350	0.000306	0.000284
Technical specification limit	0.8	0.8	0.8	0.8	0.8	0.8	0.8	0.8	0.8	0.8	0.8	0.8
Indicator value	0.1	N/A	0.1	0	0	0	0	0	0	0	0	0

Reactor Coolant System Activity	10/01	11/01	12/01	1/02	2/02	3/02	4/02	5/02	6/02	7/02	8/02	9/02
Maximum activity	0.000280	0.000289	0.000298	0.000332	0.000321	0.000355	0.000350	0.000193	0.000198	0.000213	0.000214	0.000231
Technical specification limit	0.8	0.8	0.8	0.8	0.8	0.8	0.8	0.8	0.8	0.8	0.8	0.8
Indicator value	0	0	0	0	0	0	0	0	0	0	0	0

Licensee Comments: none

Reactor Coolant System Leakage



Thresholds: White > 50.0 Yellow > 100.0

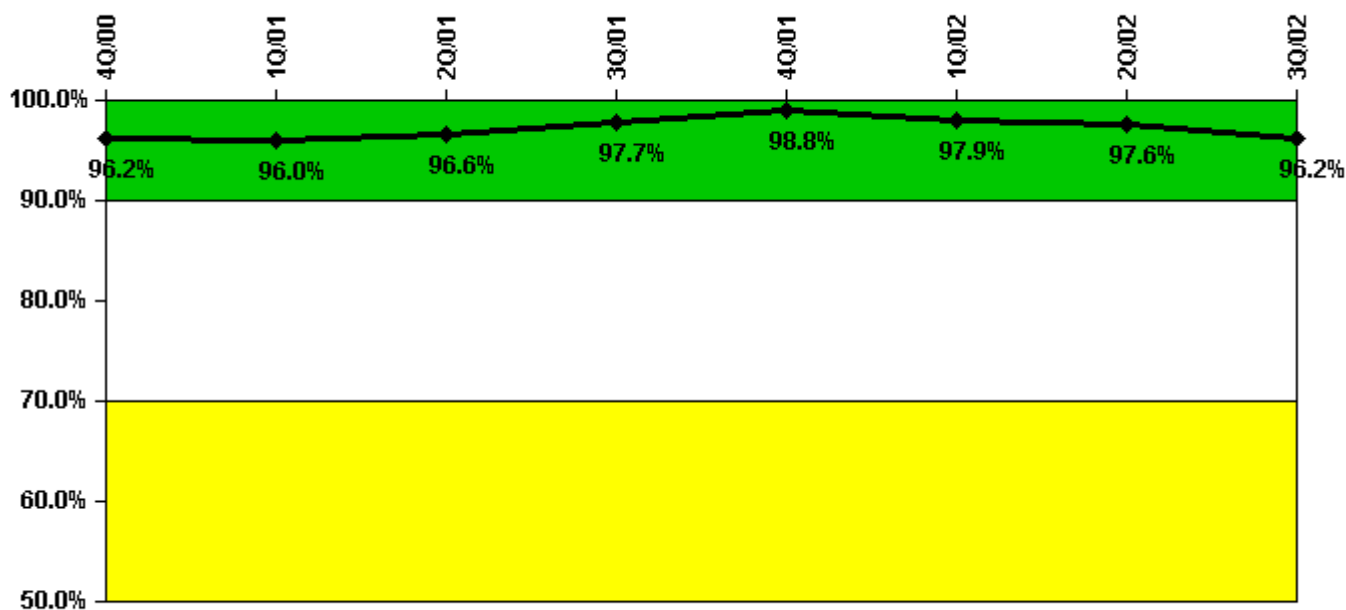
Notes

Reactor Coolant System Leakage	10/00	11/00	12/00	1/01	2/01	3/01	4/01	5/01	6/01	7/01	8/01	9/01
Maximum leakage	0.106	N/A	0.033	0.068	0.120	0.078	0.066	0.071	0.105	0.136	0.100	0.104
Technical specification limit	10.0	10.0	10.0	10.0	10.0	10.0	10.0	10.0	10.0	10.0	10.0	10.0
Indicator value	1.1	N/A	0.3	0.7	1.2	0.8	0.7	0.7	1.1	1.4	1.0	1.0

Reactor Coolant System Leakage	10/01	11/01	12/01	1/02	2/02	3/02	4/02	5/02	6/02	7/02	8/02	9/02
Maximum leakage	0.079	0.162	0.123	0.140	0.110	0.158	0.120	0.140	0.180	0.080	0.092	0.080
Technical specification limit	10.0	10.0	10.0	10.0	10.0	10.0	10.0	10.0	10.0	10.0	10.0	10.0
Indicator value	0.8	1.6	1.2	1.4	1.1	1.6	1.2	1.4	1.8	0.8	0.9	0.8

Licensee Comments: none

Drill/Exercise Performance



Thresholds: White < 90.0% Yellow < 70.0%

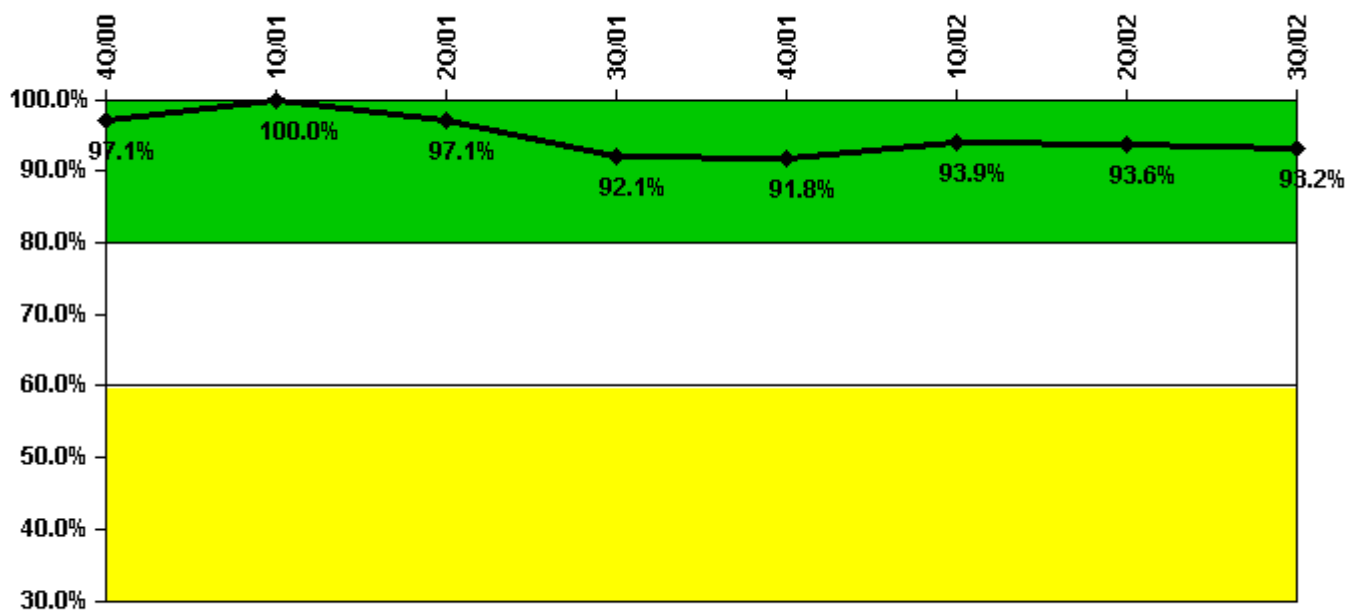
Notes

Drill/Exercise Performance	4Q/00	1Q/01	2Q/01	3Q/01	4Q/01	1Q/02	2Q/02	3Q/02
Successful opportunities	30.0	4.0	2.0	4.0	15.0	11.0	0	9.0
Total opportunities	30.0	4.0	2.0	4.0	16.0	12.0	0	10.0
Indicator value	96.2%	96.0%	96.6%	97.7%	98.8%	97.9%	97.6%	96.2%

Licensee Comments:

1Q/02: February data was revised to reflect a missed opportunity during the 2002 exercise that was being discussed with the NRC at the time of the last report.

ERO Drill Participation



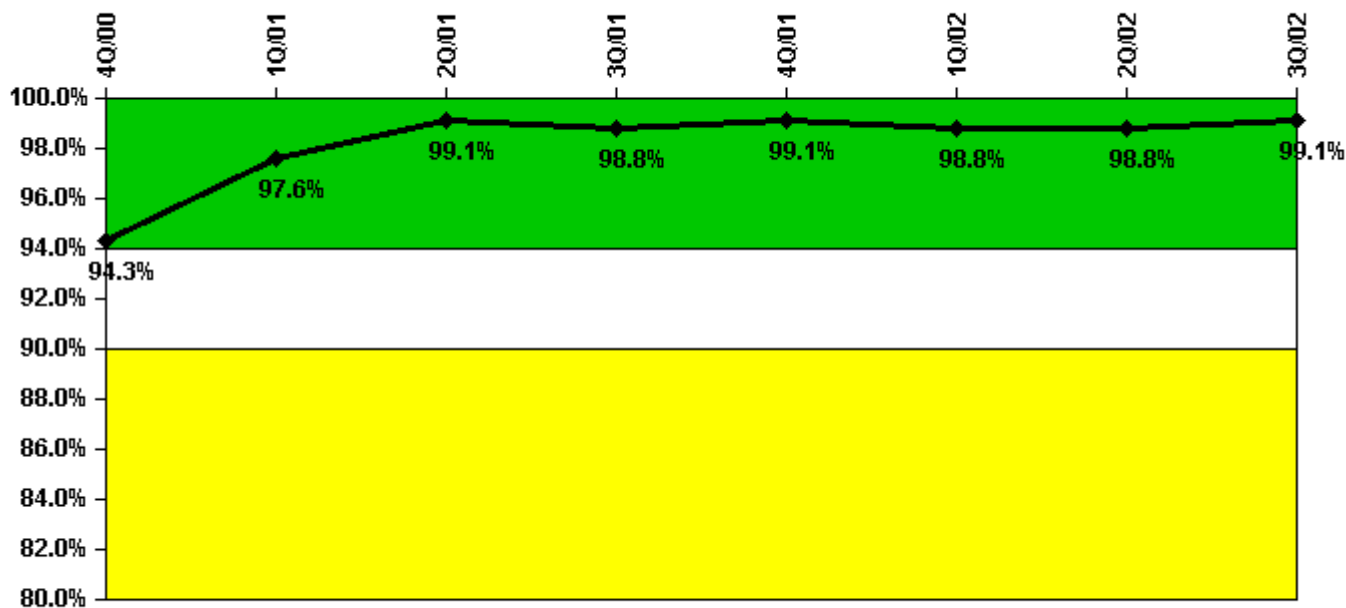
Thresholds: White < 80.0% Yellow < 60.0%

Notes

ERO Drill Participation	4Q/00	1Q/01	2Q/01	3Q/01	4Q/01	1Q/02	2Q/02	3Q/02
Participating Key personnel	34.0	35.0	34.0	35.0	45.0	46.0	44.0	41.0
Total Key personnel	35.0	35.0	35.0	38.0	49.0	49.0	47.0	44.0
Indicator value	97.1%	100.0%	97.1%	92.1%	91.8%	93.9%	93.6%	93.2%

Licensee Comments: none

Alert & Notification System



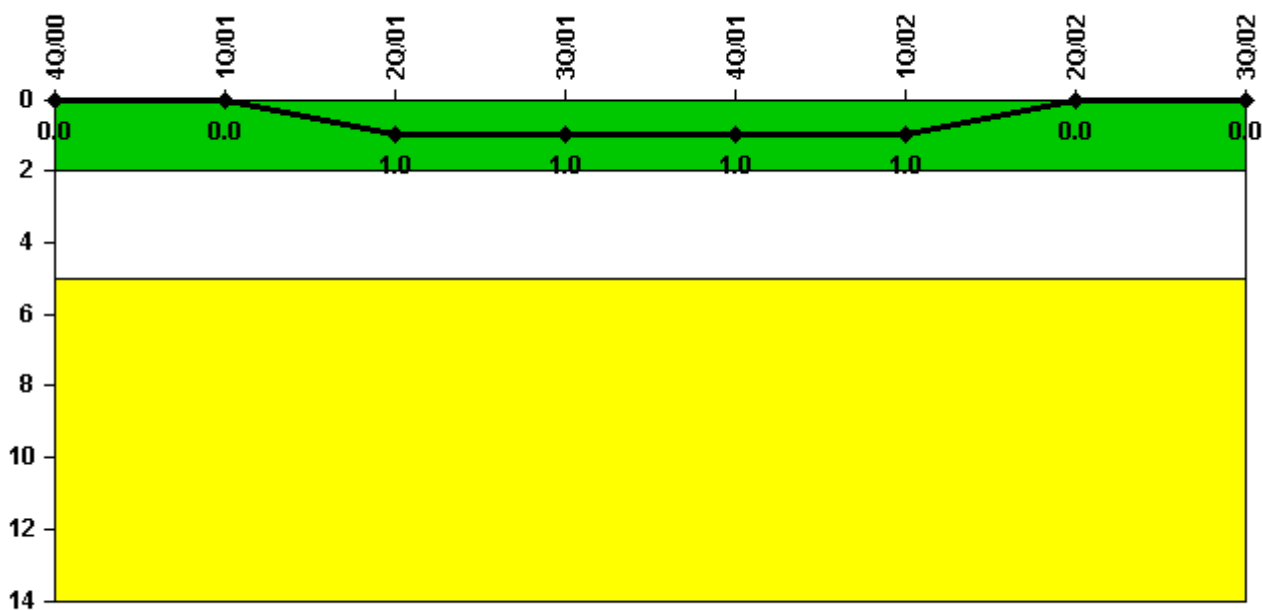
Thresholds: White < 94.0% Yellow < 90.0%

Notes

Alert & Notification System	4Q/00	1Q/01	2Q/01	3Q/01	4Q/01	1Q/02	2Q/02	3Q/02
Successful siren-tests	83	83	83	83	84	82	83	84
Total sirens-tests	84	84	84	84	84	84	84	84
Indicator value	94.3%	97.6%	99.1%	98.8%	99.1%	98.8%	98.8%	99.1%

Licensee Comments: none

Occupational Exposure Control Effectiveness



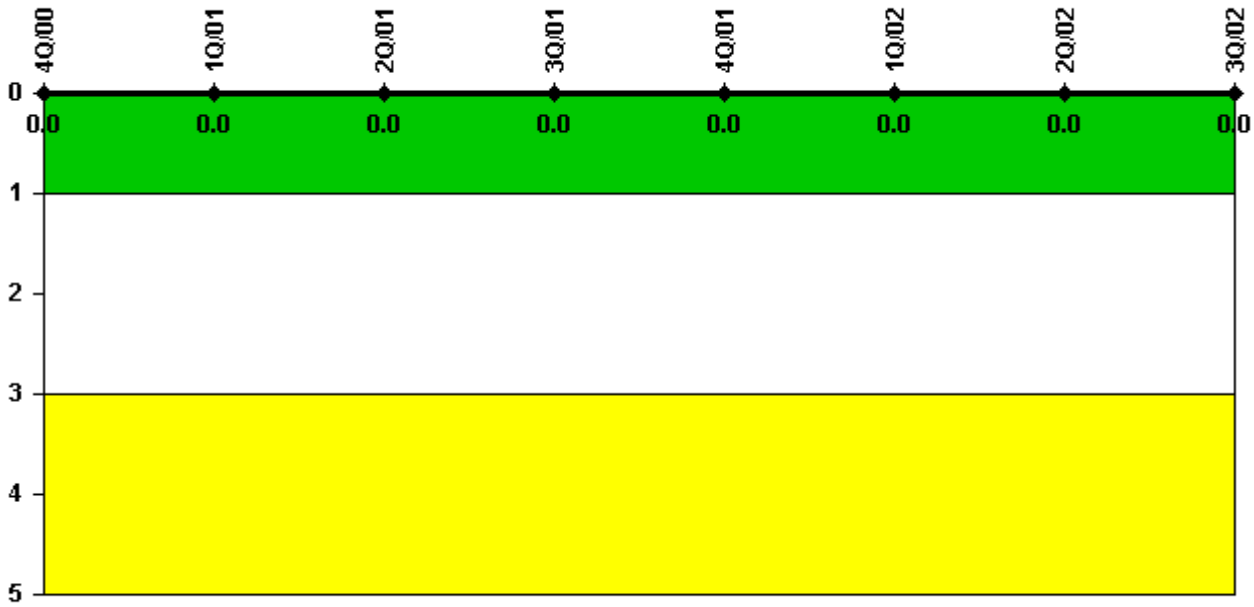
Thresholds: White > 2.0 Yellow > 5.0

Notes

Occupational Exposure Control Effectiveness	4Q/00	1Q/01	2Q/01	3Q/01	4Q/01	1Q/02	2Q/02	3Q/02
High radiation area occurrences	0	0	1	0	0	0	0	0
Very high radiation area occurrences	0	0	0	0	0	0	0	0
Unintended exposure occurrences	0	0	0	0	0	0	0	0
Indicator value	0	0	1	1	1	1	0	0

Licensee Comments: none

RETS/ODCM Radiological Effluent



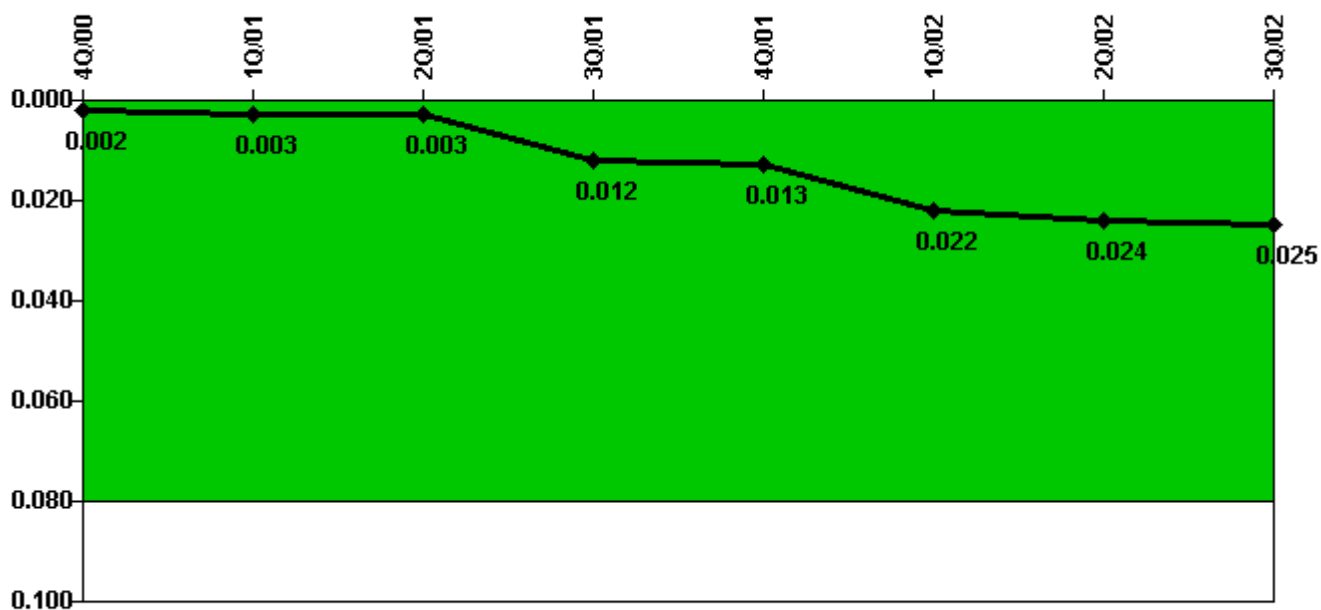
Thresholds: White > 1.0 Yellow > 3.0

Notes

RETS/ODCM Radiological Effluent	4Q/00	1Q/01	2Q/01	3Q/01	4Q/01	1Q/02	2Q/02	3Q/02
RETS/ODCM occurrences	0	0	0	0	0	0	0	0
Indicator value	0	0	0	0	0	0	0	0

Licensee Comments: none

Protected Area Security Performance Index



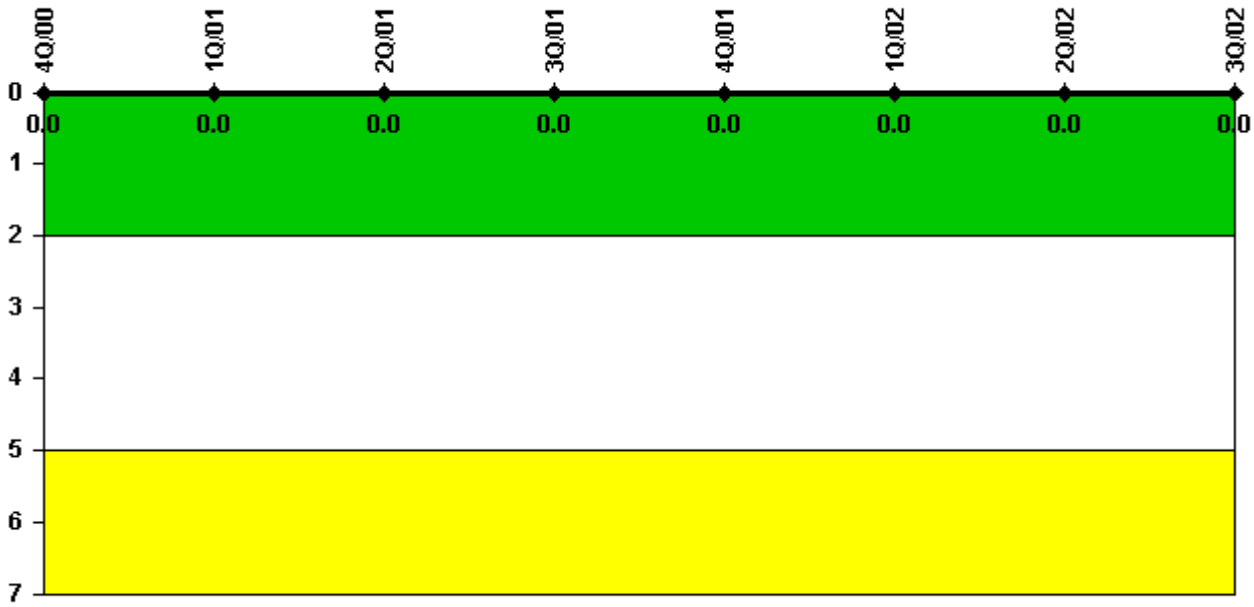
Thresholds: White > 0.080

Notes

Protected Area Security Performance Index	4Q/00	1Q/01	2Q/01	3Q/01	4Q/01	1Q/02	2Q/02	3Q/02
IDS compensatory hours	0	19.50	0	109.90	71.30	187.20	51.30	129.90
CCTV compensatory hours	30.4	7.6	0	58.0	0	19.8	0.1	56.4
IDS normalization factor	1.20	1.20	1.20	1.20	1.20	1.20	1.20	1.20
CCTV normalization factor	1.0	1.0	1.0	1.0	1.0	1.0	1.0	1.0
Index Value	0.002	0.003	0.003	0.012	0.013	0.022	0.024	0.025

Licensee Comments: none

Personnel Screening Program



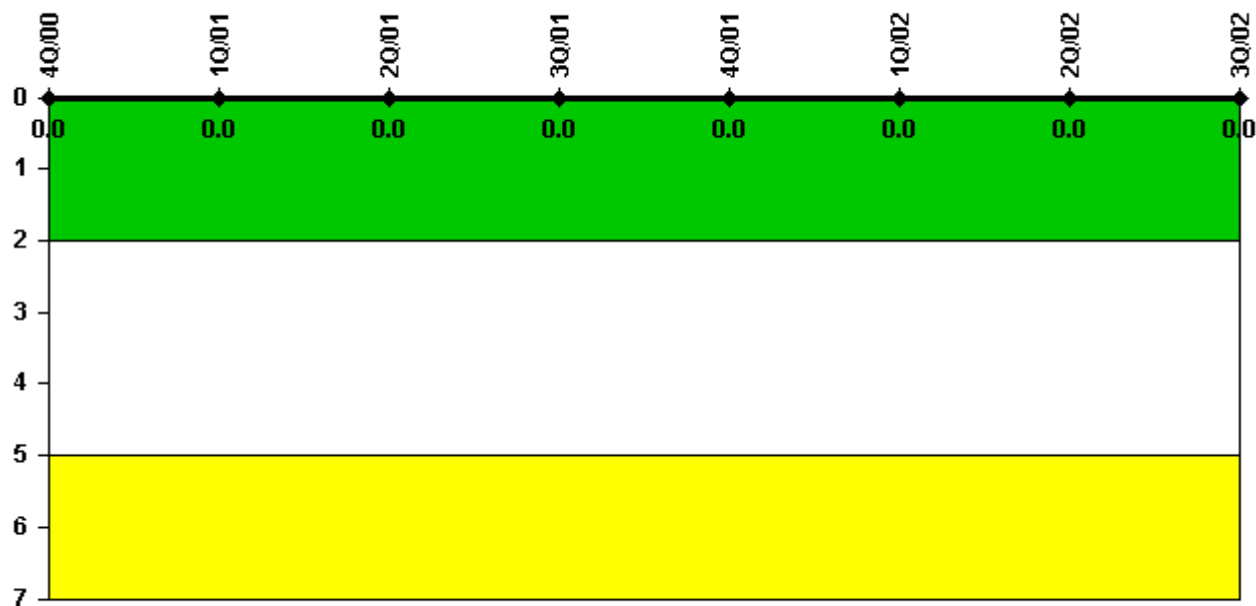
Thresholds: White > 2.0 Yellow > 5.0

Notes

Personnel Screening Program	4Q/00	1Q/01	2Q/01	3Q/01	4Q/01	1Q/02	2Q/02	3Q/02
Program failures	0	0	0	0	0	0	0	0
Indicator value	0	0	0	0	0	0	0	0

Licensee Comments: none

FFD/Personnel Reliability



Thresholds: White > 2.0 Yellow > 5.0

Notes

FFD/Personnel Reliability	4Q/00	1Q/01	2Q/01	3Q/01	4Q/01	1Q/02	2Q/02	3Q/02
Program Failures	0	0	0	0	0	0	0	0
Indicator value	0	0	0	0	0	0	0	0

Licensee Comments: none

▲ [PI Summary](#) | [Inspection Findings Summary](#) | [Reactor Oversight Process](#)

Last Modified: October 22, 2002