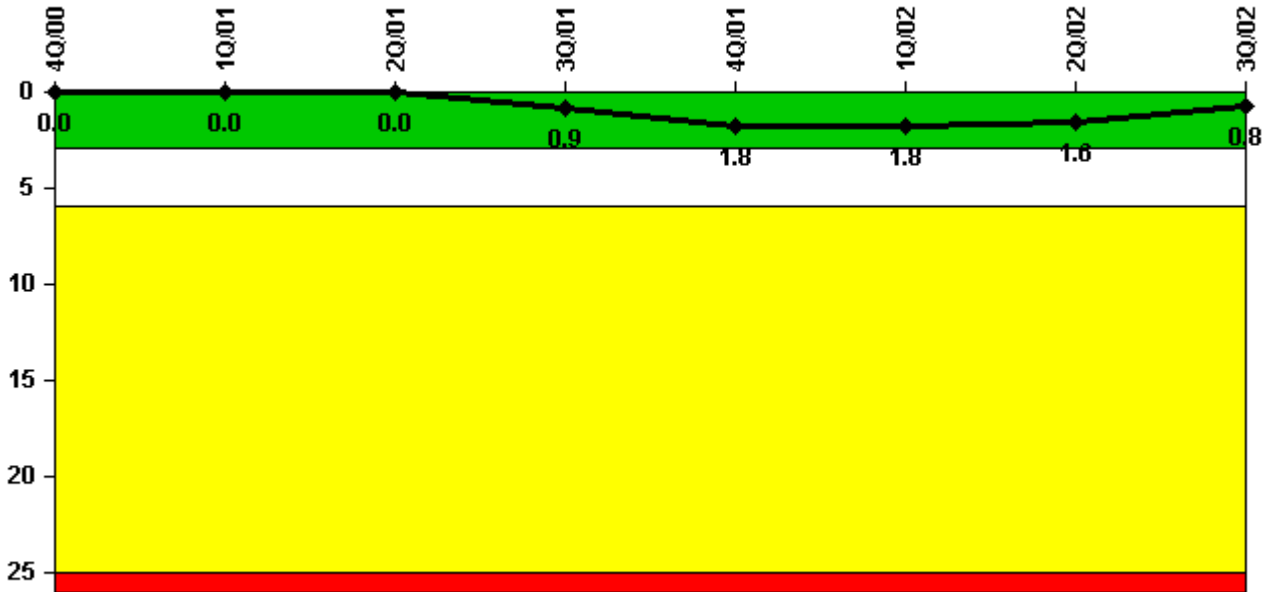


# Pilgrim 1

## 3Q/2002 Performance Indicators

Licensee's General Comments: Pilgrim PI Data (3Q-2002)

### Unplanned Scrams per 7000 Critical Hrs



Thresholds: White > 3.0 Yellow > 6.0 Red > 25.0

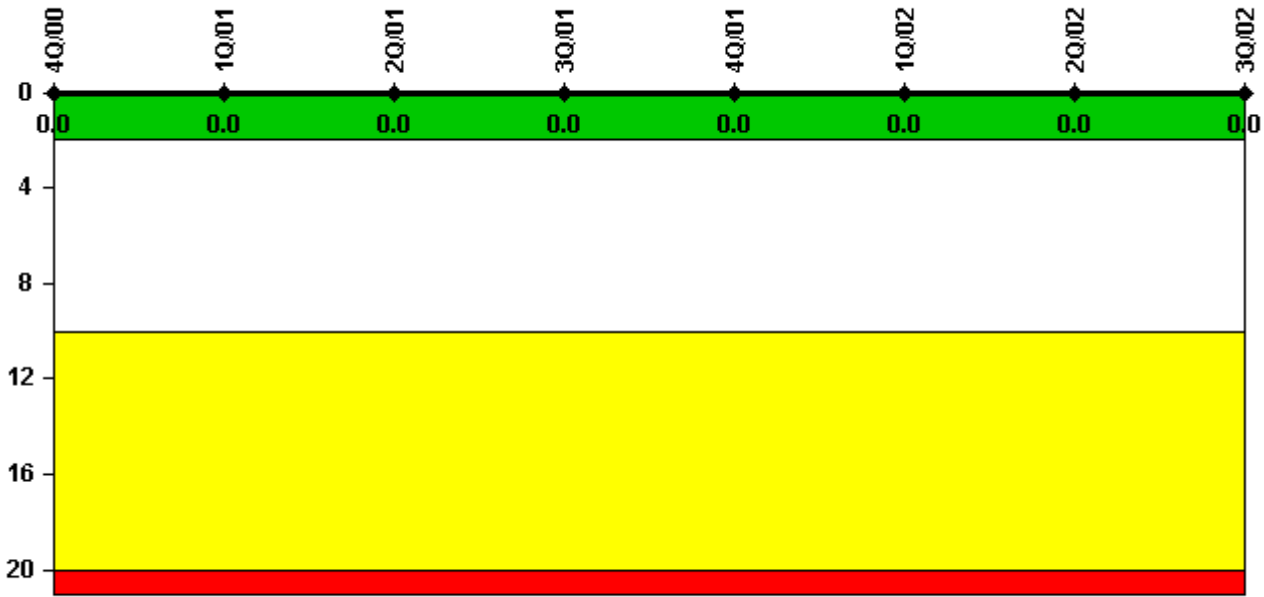
### Notes

Unplanned Scrams per 7000 Critical Hrs	4Q/00	1Q/01	2Q/01	3Q/01	4Q/01	1Q/02	2Q/02	3Q/02
Unplanned scrams	0	0	0	1.0	1.0	0	0	0
Critical hours	2114.8	2160.0	1556.7	2115.4	2140.1	2160.0	2183.0	2208.0
Indicator value	0	0	0	0.9	1.8	1.8	1.6	0.8

Licensee Comments:

3Q/02: Reflects scrams on 8/13/01 and 12/27/01.

### Scrams with Loss of Normal Heat Removal



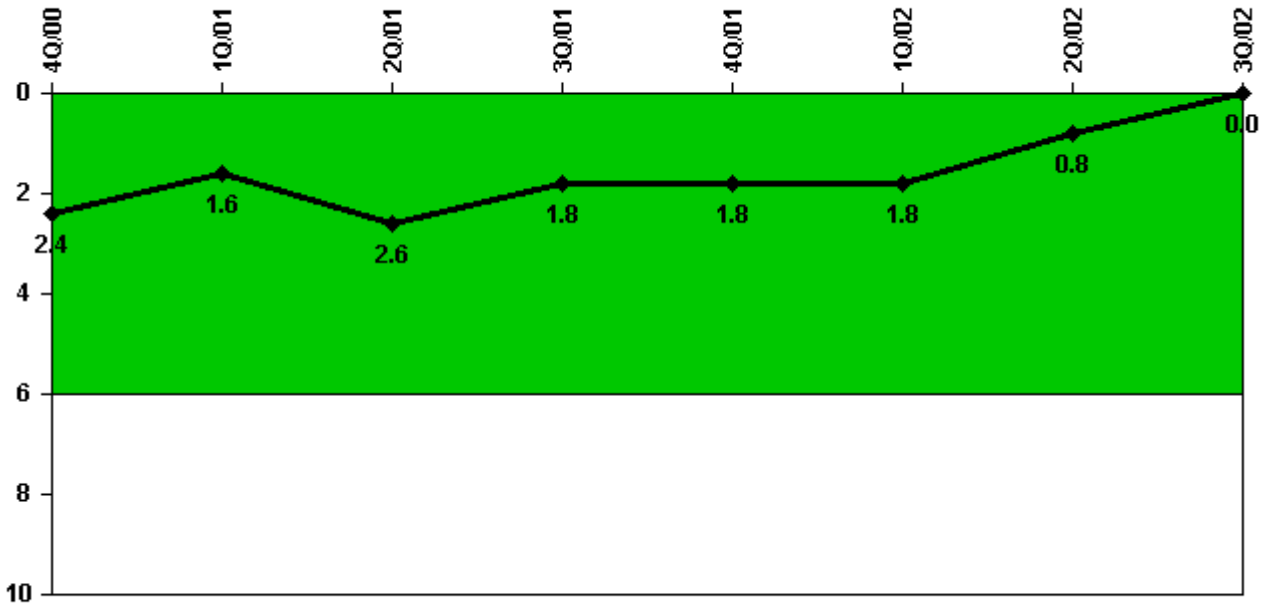
Thresholds: White > 2.0 Yellow > 10.0 Red > 20.0

#### Notes

Scrams with Loss of Normal Heat Removal	4Q/00	1Q/01	2Q/01	3Q/01	4Q/01	1Q/02	2Q/02	3Q/02
Scrams	0	0	0	0	0	0	0	0
Indicator value	0	0	0	0	0	0	0	0

Licensee Comments: none

### Unplanned Power Changes per 7000 Critical Hrs



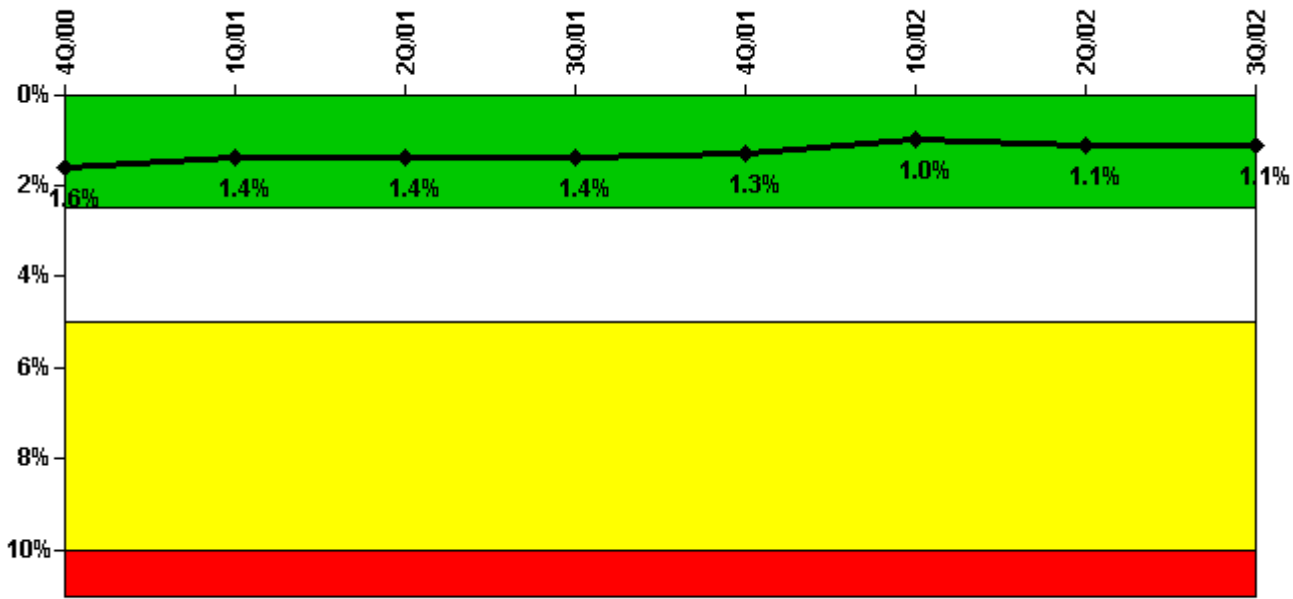
Thresholds: White > 6.0

#### Notes

Unplanned Power Changes per 7000 Critical Hrs	4Q/00	1Q/01	2Q/01	3Q/01	4Q/01	1Q/02	2Q/02	3Q/02
Unplanned power changes	0	0	1.0	1.0	0	0	0	0
Critical hours	2114.8	2160.0	1556.7	2115.4	2140.1	2160.0	2183.0	2208.0
Indicator value	2.4	1.6	2.6	1.8	1.8	1.8	0.8	0

Licensee Comments: none

### Safety System Unavailability, Emergency AC Power



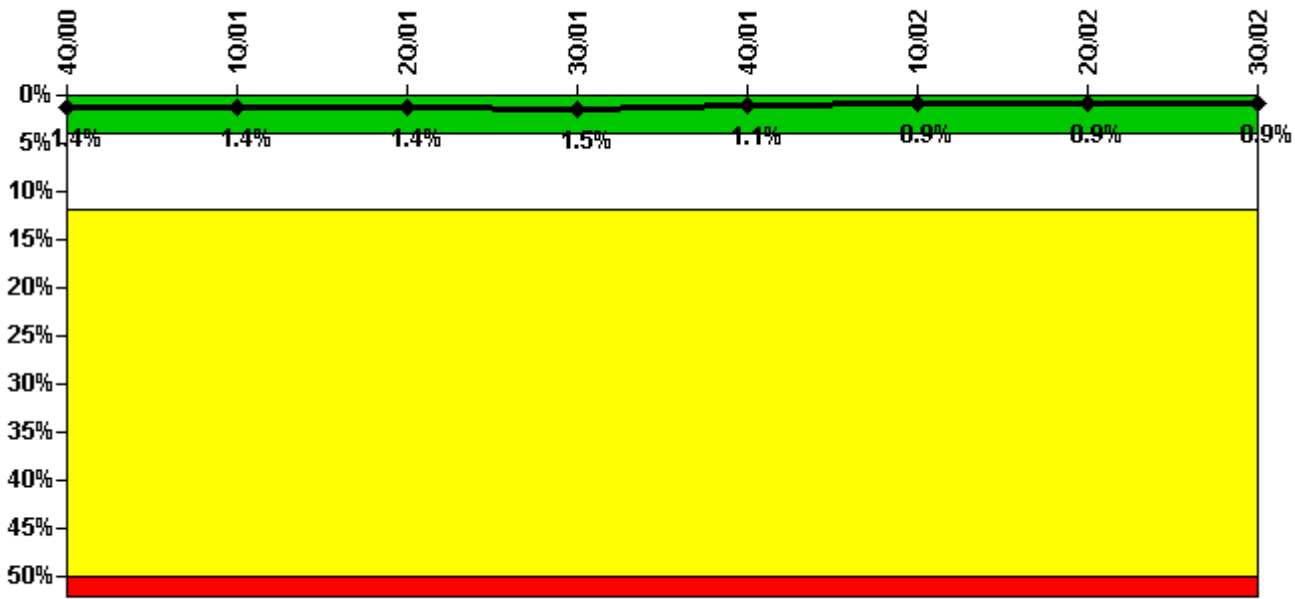
Thresholds: White > 2.5% Yellow > 5.0% Red > 10.0%

#### Notes

Safety System Unavailability, Emergency AC Power	4Q/00	1Q/01	2Q/01	3Q/01	4Q/01	1Q/02	2Q/02	3Q/02
<b>Train 1</b>								
Planned unavailable hours	0	0.25	0.29	11.05	0.99	1.20	3.55	144.05
Unplanned unavailable hours	0	0	0	4.87	0	0	4.00	4.70
Fault exposure hours	0	0	0	0	0	0	0	0
Effective Reset hours	0	0	0	0	0	0	0	0
Required hours	2208.00	2160.00	1573.25	2181.70	2154.80	2160.00	2183.00	2208.00
<b>Train 2</b>								
Planned unavailable hours	0	0.35	1.13	0.68	5.70	0.90	117.66	0.70
Unplanned unavailable hours	0	0	0	0	0	0	33.75	3.05
Fault exposure hours	0	0	0	0	0	0	0	0
Effective Reset hours	0	0	0	0	0	0	0	0
Required hours	2208.00	2160.00	1573.25	2181.70	2154.80	2160.00	2183.00	2208.00
<b>Indicator value</b>	<b>1.6%</b>	<b>1.4%</b>	<b>1.4%</b>	<b>1.4%</b>	<b>1.3%</b>	<b>1.0%</b>	<b>1.1%</b>	<b>1.1%</b>

Licensee Comments: none

### Safety System Unavailability, High Pressure Injection System (HPCI)



Thresholds: White > 4.0% Yellow > 12.0% Red > 50.0%

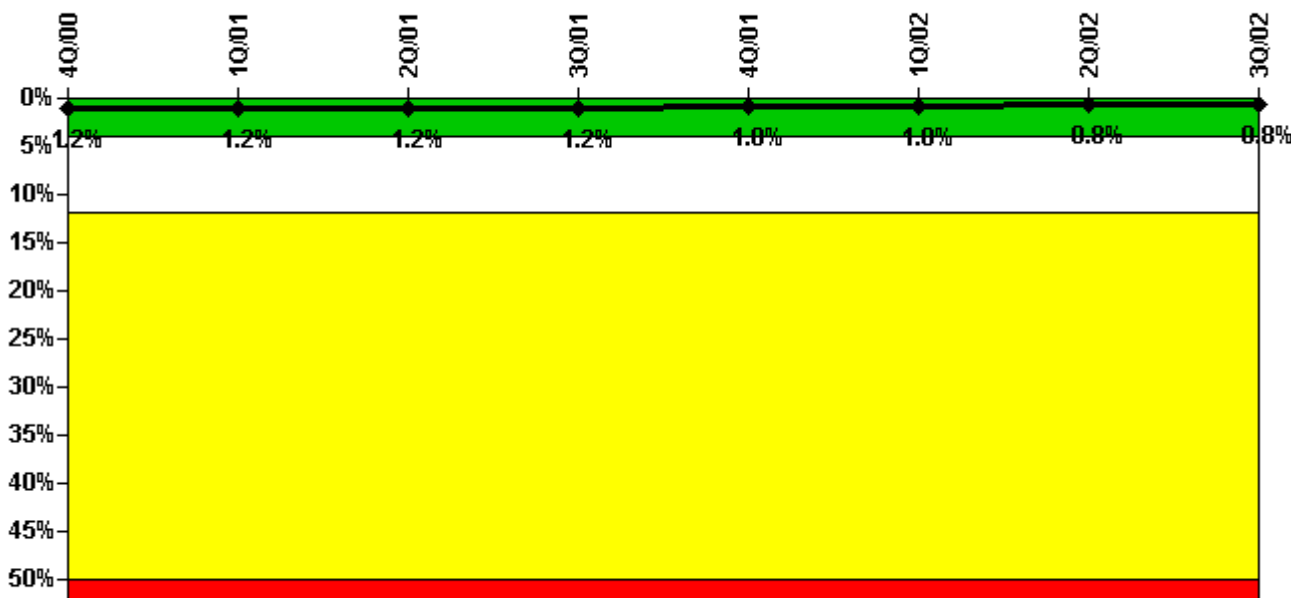
#### Notes

Safety System Unavailability, High Pressure Injection System (HPCI)	4Q/00	1Q/01	2Q/01	3Q/01	4Q/01	1Q/02	2Q/02	3Q/02
Train 1								
Planned unavailable hours	7.50	7.00	4.06	24.21	7.74	15.31	12.90	18.62
Unplanned unavailable hours	0	6.00	0	0	0	0	0	0.50
Fault exposure hours	0	0	0	0	0	0	0	0
Effective Reset hours	0	0	0	0	0	0	0	0
Required hours	2116.00	2160.00	1525.00	2121.00	2148.00	2160.00	2183.00	2208.00
Indicator value	1.4%	1.4%	1.4%	1.5%	1.1%	0.9%	0.9%	0.9%

Licensee Comments:

3Q/02: One-half hour of unplanned unavailability hours due to HPCI injection valve fuse failure on 7/7/2002.

### Safety System Unavailability, Heat Removal System (RCIC)



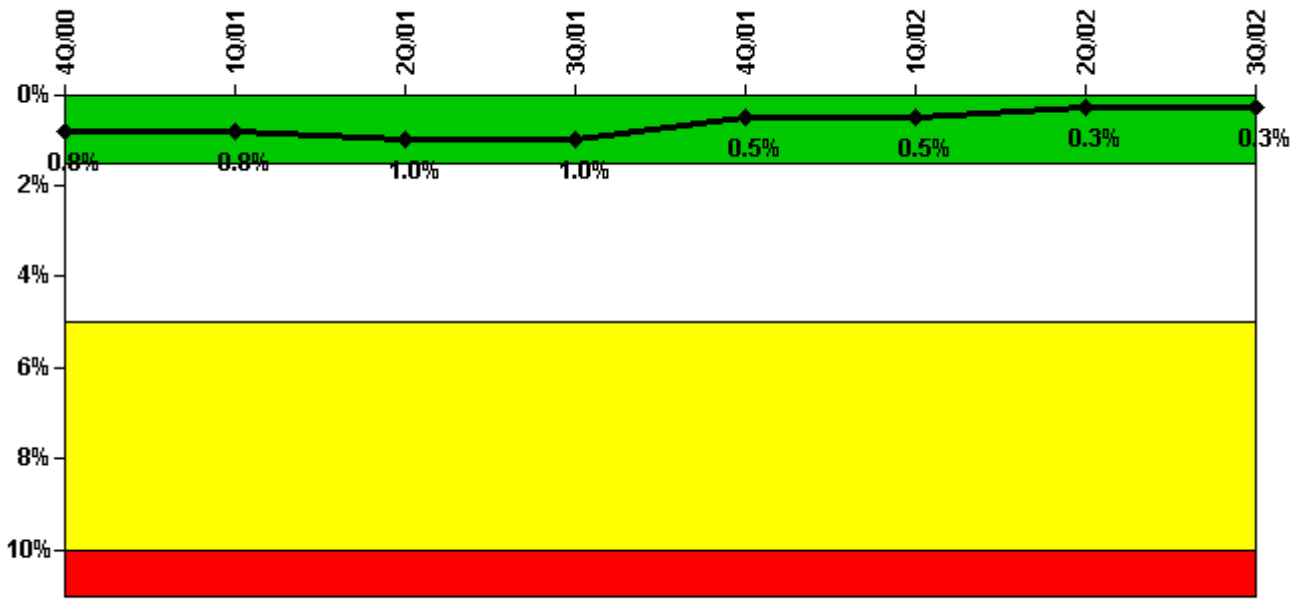
Thresholds: White > 4.0% Yellow > 12.0% Red > 50.0%

#### Notes

Safety System Unavailability, Heat Removal System (RCIC)	4Q/00	1Q/01	2Q/01	3Q/01	4Q/01	1Q/02	2Q/02	3Q/02
Train 1								
Planned unavailable hours	26.70	15.00	3.80	13.72	10.75	11.86	7.64	14.28
Unplanned unavailable hours	12.80	1.00	1.40	0.73	0	0	0	0
Fault exposure hours	0	0	0	0	0	0	0	0
Effective Reset hours	0	0	0	0	0	0	0	0
Required hours	2116.00	2160.00	1525.00	2121.00	2148.00	2160.00	2183.00	2208.00
Indicator value	1.2%	1.2%	1.2%	1.2%	1.0%	1.0%	0.8%	0.8%

Licensee Comments: none

### Safety System Unavailability, Residual Heat Removal System



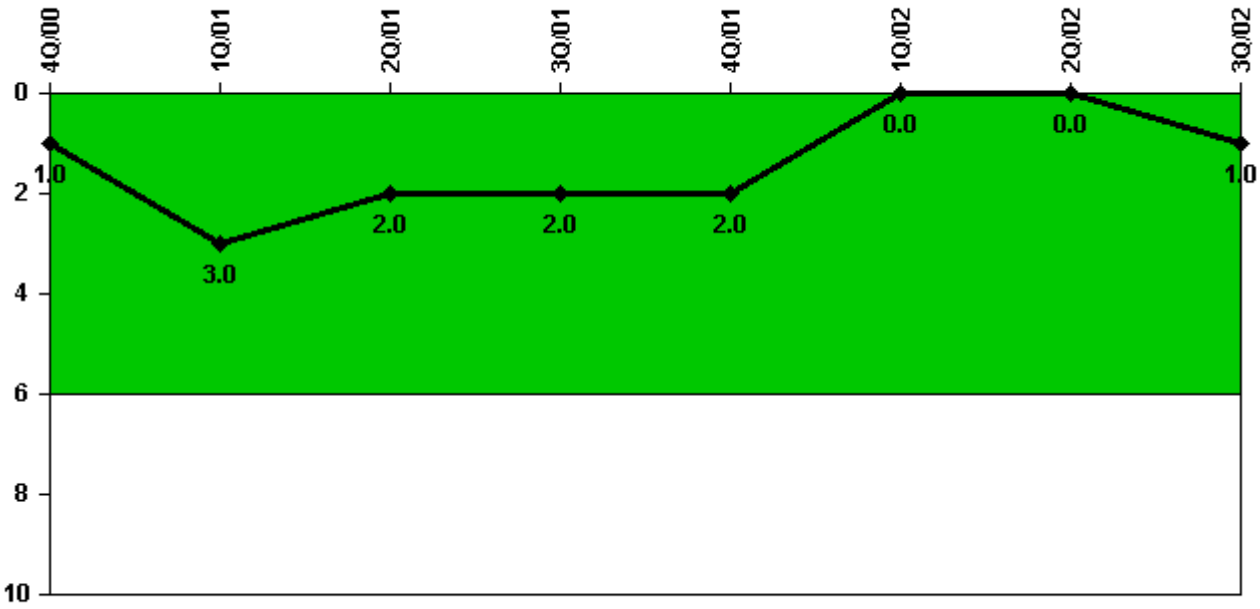
Thresholds: White > 1.5% Yellow > 5.0% Red > 10.0%

#### Notes

Safety System Unavailability, Residual Heat Removal System	4Q/00	1Q/01	2Q/01	3Q/01	4Q/01	1Q/02	2Q/02	3Q/02
<b>Train 1</b>								
Planned unavailable hours	6.62	18.95	0	0	0.25	0	2.48	0
Unplanned unavailable hours	0	1.68	0.30	0	0	0	0	0
Fault exposure hours	0	0	0	0	0	0	0	0
Effective Reset hours	0	0	0	0	0	0	0	0
Required hours	2208.00	2160.00	2183.00	2208.00	2209.00	2160.00	2183.00	2208.00
<b>Train 2</b>								
Planned unavailable hours	12.16	0	108.85	0	0	0	0	0.50
Unplanned unavailable hours	0	0	0	0	0	0	0	0
Fault exposure hours	0	0	0	0	0	0	0	0
Effective Reset hours	0	0	0	0	0	0	0	0
Required hours	2208.00	2160.00	2183.00	2208.00	2209.00	2160.00	2183.00	2208.00
<b>Indicator value</b>	<b>0.8%</b>	<b>0.8%</b>	<b>1.0%</b>	<b>1.0%</b>	<b>0.5%</b>	<b>0.5%</b>	<b>0.3%</b>	<b>0.3%</b>

Licensee Comments: none

### Safety System Functional Failures (BWR)



Thresholds: White > 6.0

#### Notes

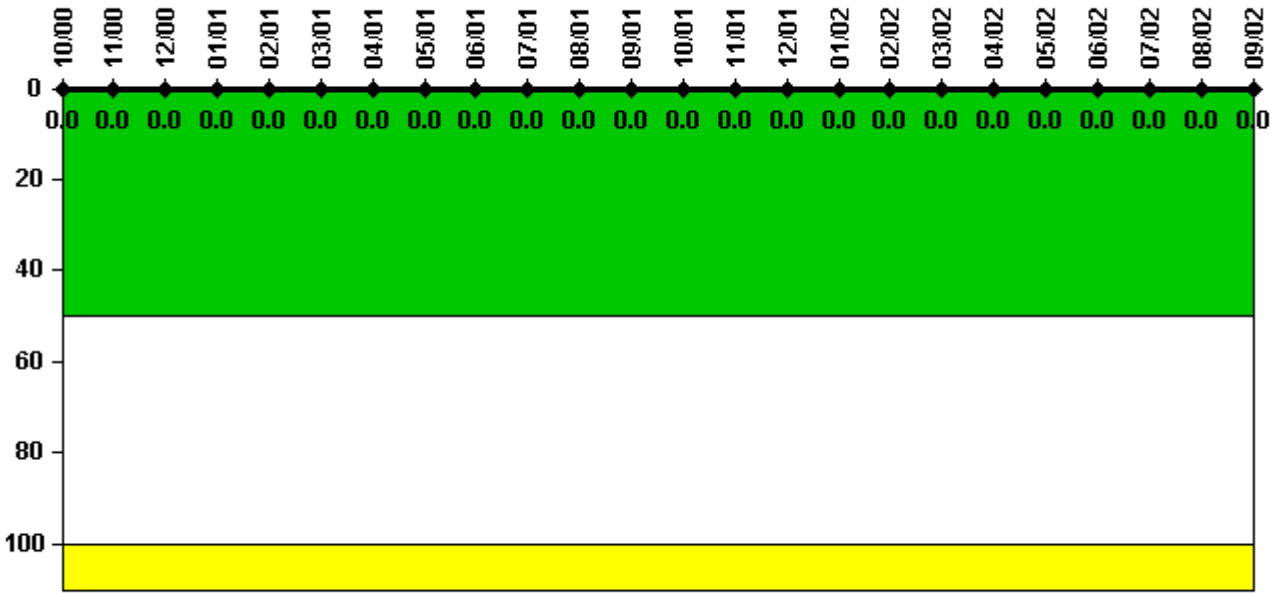
Safety System Functional Failures (BWR)	4Q/00	1Q/01	2Q/01	3Q/01	4Q/01	1Q/02	2Q/02	3Q/02
Safety System Functional Failures	0	2	0	0	0	0	0	1
Indicator value	1	3	2	2	2	0	0	1

Licensee Comments:

3Q/02: Reflects LER 2002-001-00 (HPCI Inoperable due to Fuse Failure) that was submitted on 9/4/02.



### Reactor Coolant System Activity



Thresholds: White > 50.0 Yellow > 100.0

#### Notes

Reactor Coolant System Activity	10/00	11/00	12/00	1/01	2/01	3/01	4/01	5/01	6/01	7/01	8/01	9/01
Maximum activity	0.004770	0.004320	0.005010	0.006560	0.002670	0.003420	0.003490	0.002800	0.003140	0.002850	0.003030	0.002270
Technical specification limit	20.0	20.0	20.0	20.0	20.0	20.0	20.0	20.0	20.0	20.0	20.0	20.0
Indicator value	0	0	0	0	0	0	0	0	0	0	0	0

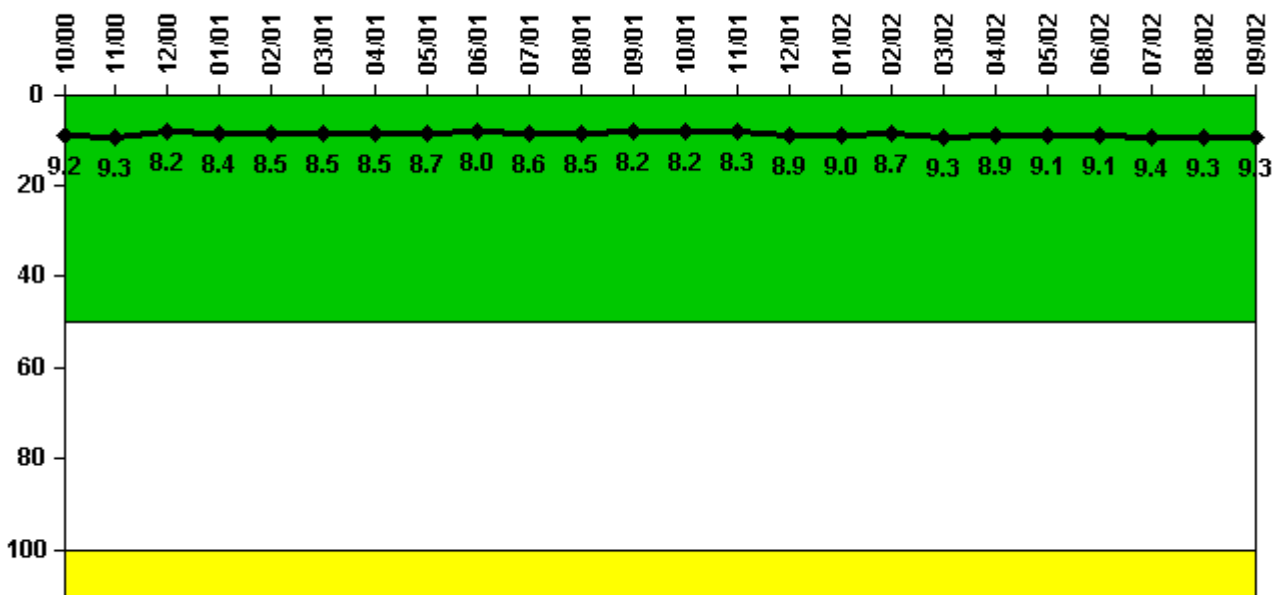
  

Reactor Coolant System Activity	10/01	11/01	12/01	1/02	2/02	3/02	4/02	5/02	6/02	7/02	8/02	9/02
Maximum activity	0.003310	0.002450	0.002260	0.002860	0.003050	0.003100	0.002360	0.002250	0.002360	0.002360	0.002930	0.002850
Technical specification limit	20.0	20.0	20.0	20.0	20.0	20.0	20.0	20.0	20.0	20.0	20.0	20.0
Indicator value	0	0	0	0	0	0	0	0	0	0	0	0

Licensee Comments:

9/02: Maximum calculated RCS activity in micro-Curies per gram total Iodine, expressed as a percentage of the Technical Specification limit. Technical Specifications specify total Iodine, does not specify dose equivalent Iodine-131.

### Reactor Coolant System Leakage



Thresholds: White > 50.0 Yellow > 100.0

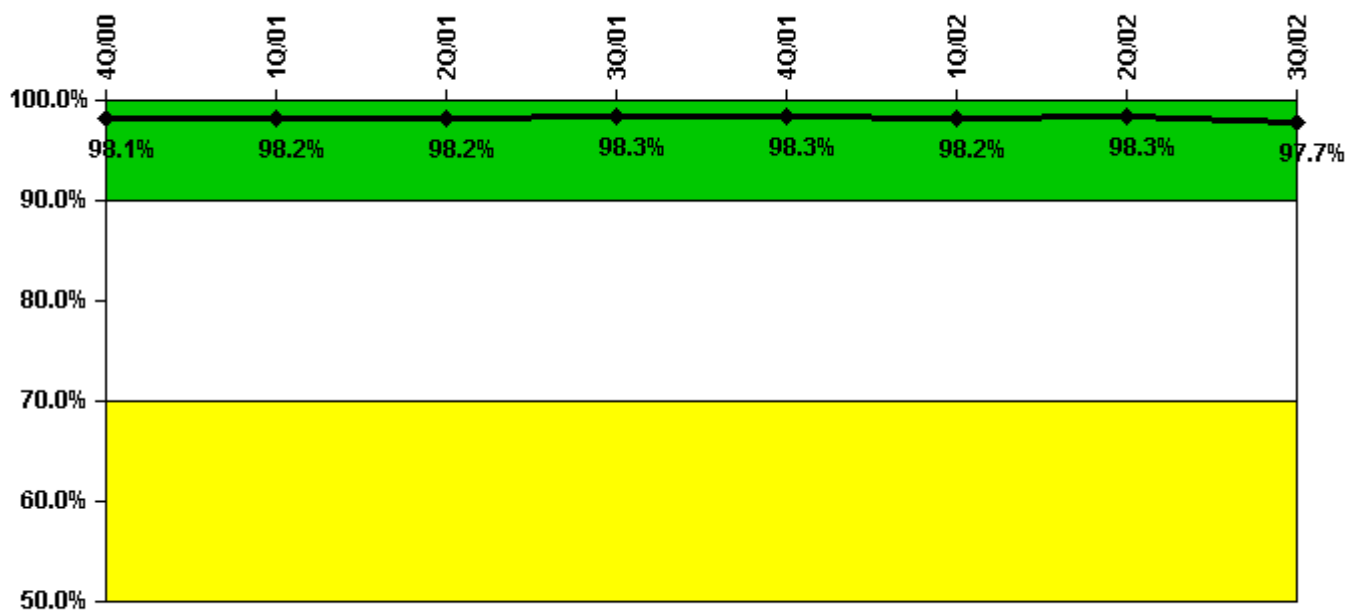
#### Notes

Reactor Coolant System Leakage	10/00	11/00	12/00	1/01	2/01	3/01	4/01	5/01	6/01	7/01	8/01	9/01
Maximum leakage	2.300	2.330	2.040	2.100	2.130	2.130	2.120	2.180	2.000	2.140	2.130	2.060
Technical specification limit	25.0	25.0	25.0	25.0	25.0	25.0	25.0	25.0	25.0	25.0	25.0	25.0
Indicator value	9.2	9.3	8.2	8.4	8.5	8.5	8.5	8.7	8.0	8.6	8.5	8.2
Reactor Coolant System Leakage	10/01	11/01	12/01	1/02	2/02	3/02	4/02	5/02	6/02	7/02	8/02	9/02
Maximum leakage	2.060	2.080	2.230	2.250	2.180	2.330	2.230	2.270	2.280	2.360	2.330	2.330
Technical specification limit	25.0	25.0	25.0	25.0	25.0	25.0	25.0	25.0	25.0	25.0	25.0	25.0
Indicator value	8.2	8.3	8.9	9.0	8.7	9.3	8.9	9.1	9.1	9.4	9.3	9.3

Licensee Comments:

9/02: Maximum total leakage (un-identified and identified) in gpm for each month, expressed as a percentage of the Technical Specification limit. Technical Specifications specify un-identified and total leakage, does not specify identified leakage.

### Drill/Exercise Performance



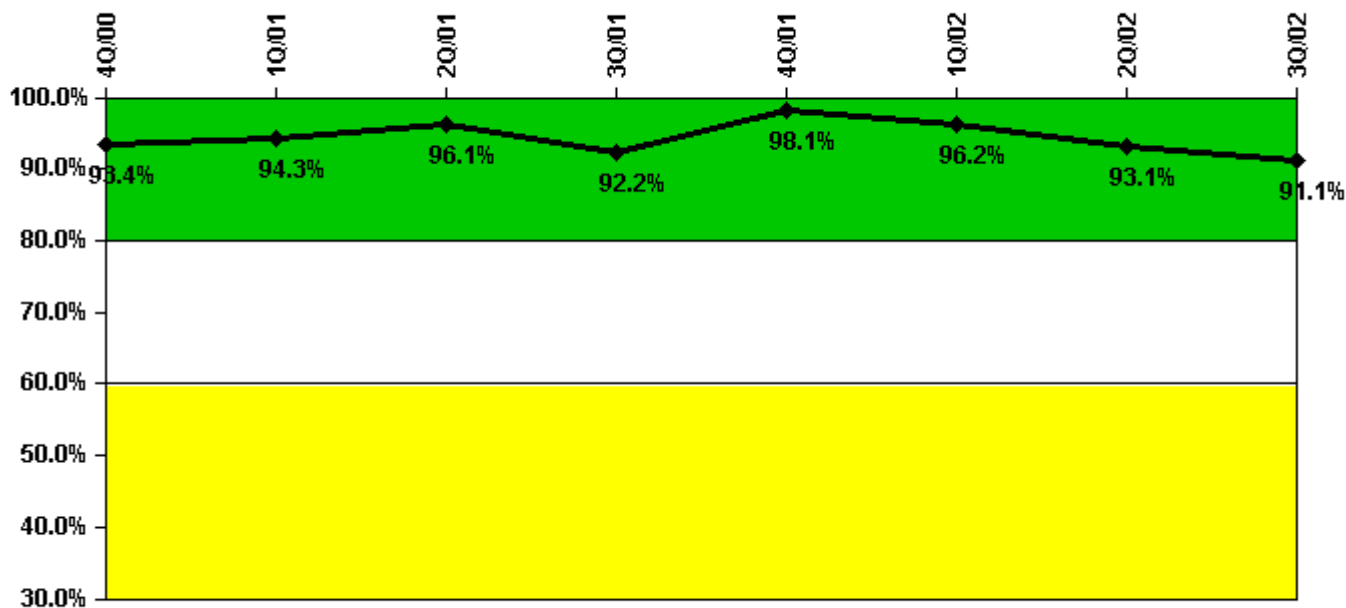
Thresholds: White < 90.0% Yellow < 70.0%

### Notes

Drill/Exercise Performance	4Q/00	1Q/01	2Q/01	3Q/01	4Q/01	1Q/02	2Q/02	3Q/02
Successful opportunities	26.0	6.0	2.0	28.0	59.0	14.0	26.0	54.0
Total opportunities	26.0	6.0	2.0	28.0	61.0	15.0	26.0	56.0
Indicator value	98.1%	98.2%	98.2%	98.3%	98.3%	98.2%	98.3%	97.7%

Licensee Comments: none

### ERO Drill Participation



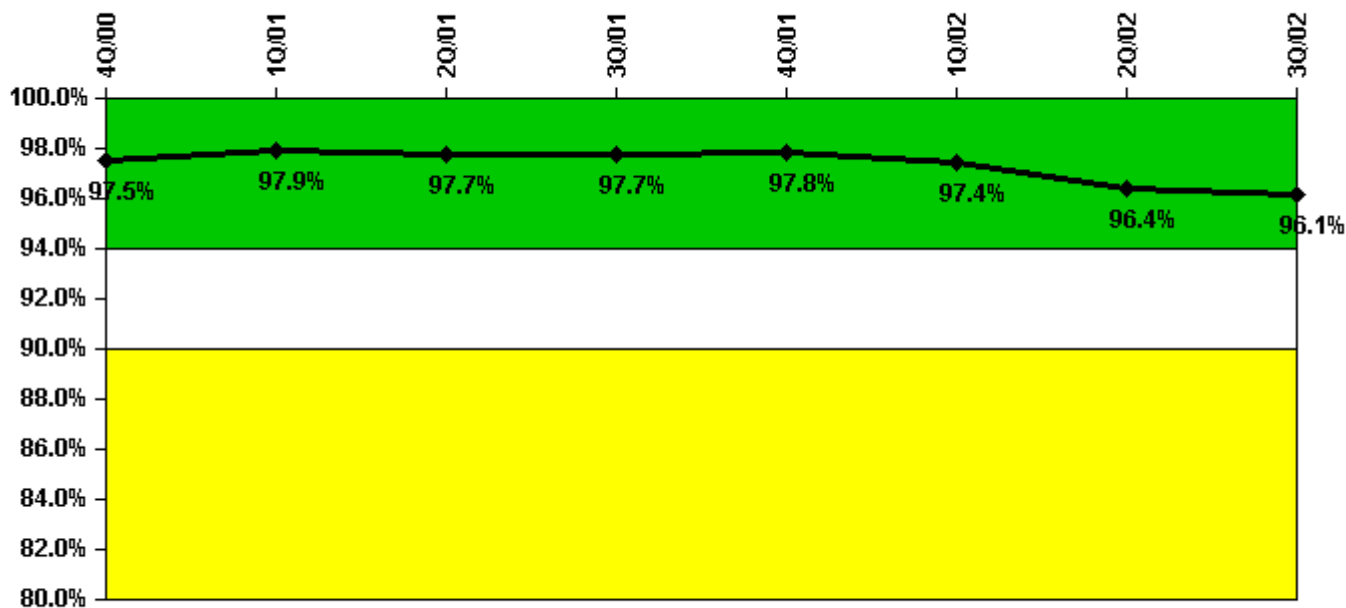
Thresholds: White < 80.0% Yellow < 60.0%

#### Notes

ERO Drill Participation	4Q/00	1Q/01	2Q/01	3Q/01	4Q/01	1Q/02	2Q/02	3Q/02
Participating Key personnel	57.0	50.0	49.0	47.0	52.0	50.0	54.0	51.0
Total Key personnel	61.0	53.0	51.0	51.0	53.0	52.0	58.0	56.0
Indicator value	93.4%	94.3%	96.1%	92.2%	98.1%	96.2%	93.1%	91.1%

Licensee Comments: none

### Alert & Notification System



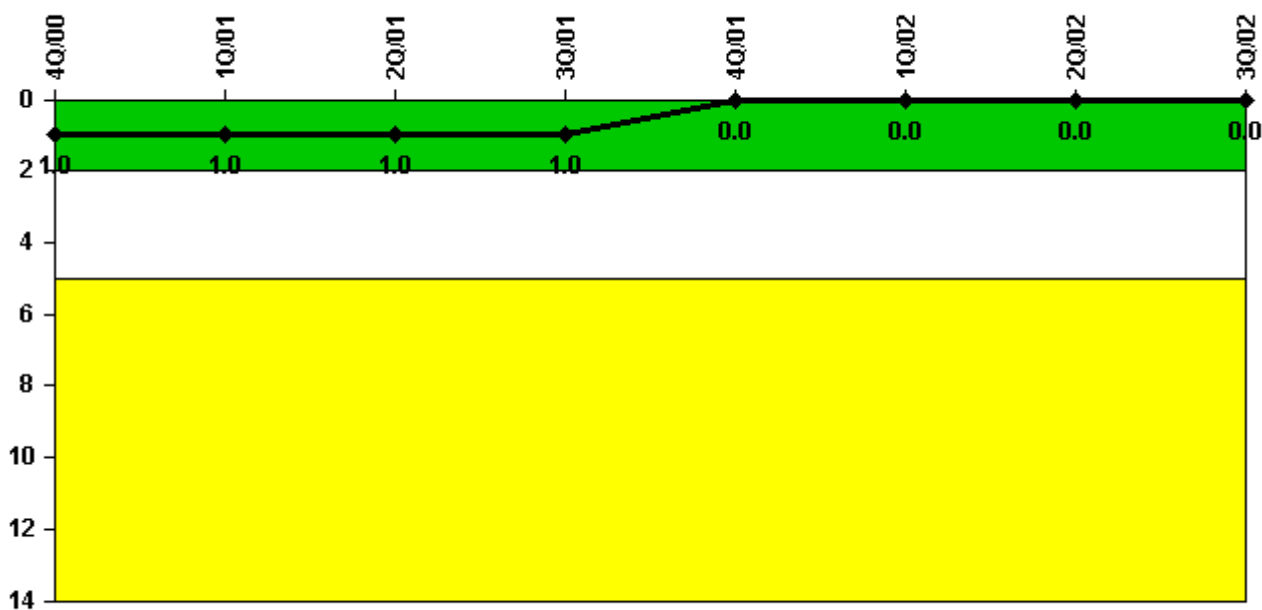
Thresholds: White < 94.0% Yellow < 90.0%

#### Notes

Alert & Notification System	4Q/00	1Q/01	2Q/01	3Q/01	4Q/01	1Q/02	2Q/02	3Q/02
Successful siren-tests	437	330	328	328	438	324	313	432
Total sirens-tests	448	336	336	336	448	336	336	448
Indicator value	97.5%	97.9%	97.7%	97.7%	97.8%	97.4%	96.4%	96.1%

Licensee Comments: none

### Occupational Exposure Control Effectiveness



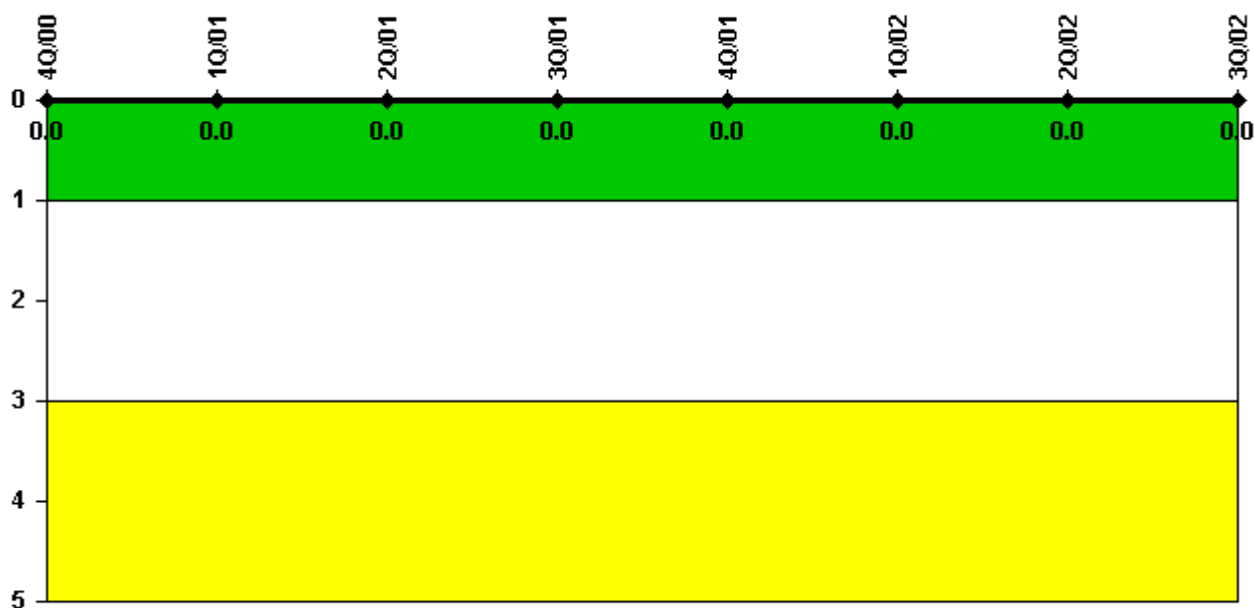
Thresholds: White > 2.0 Yellow > 5.0

#### Notes

Occupational Exposure Control Effectiveness	4Q/00	1Q/01	2Q/01	3Q/01	4Q/01	1Q/02	2Q/02	3Q/02
High radiation area occurrences	1	0	0	0	0	0	0	0
Very high radiation area occurrences	0	0	0	0	0	0	0	0
Unintended exposure occurrences	0	0	0	0	0	0	0	0
Indicator value	1	1	1	1	0	0	0	0

Licensee Comments: none

### RETS/ODCM Radiological Effluent



**Thresholds: White > 1.0 Yellow > 3.0**

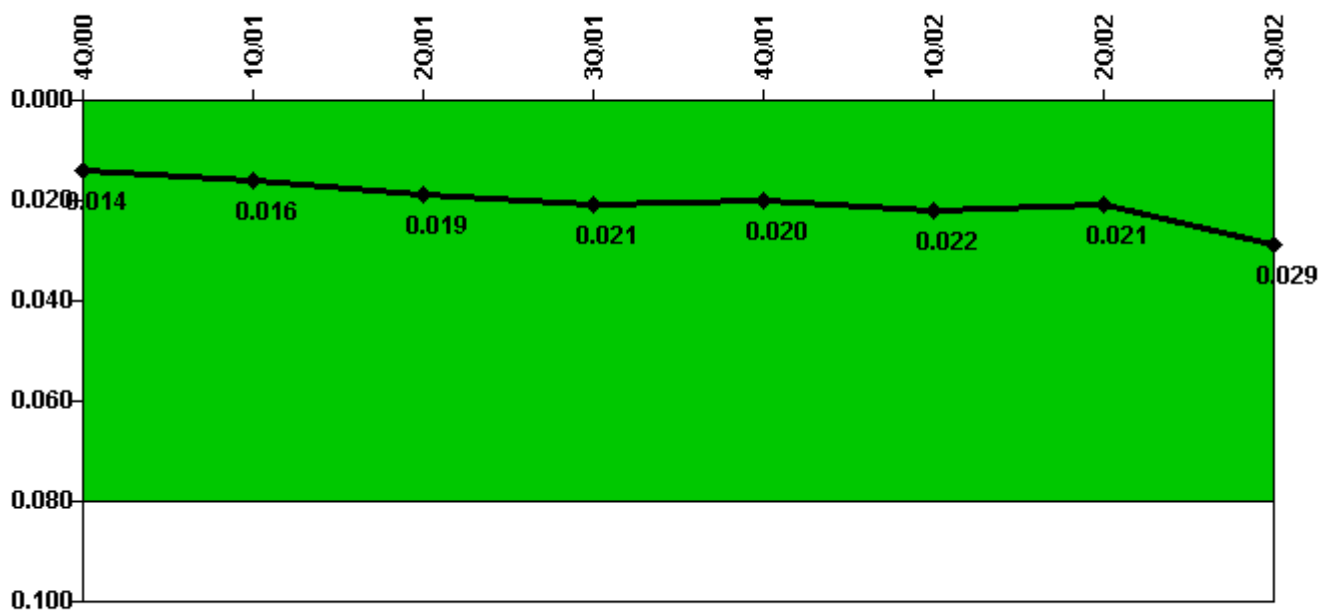
#### Notes

RETS/ODCM Radiological Effluent	4Q/00	1Q/01	2Q/01	3Q/01	4Q/01	1Q/02	2Q/02	3Q/02
RETS/ODCM occurrences	0	0	0	0	0	0	0	0
Indicator value	0	0	0	0	0	0	0	0

Licensee Comments:

3Q/02: Analysis results of effluents for September 2002 were not available when this data was submitted because the results of laboratory analysis of samples for September 2002 will not be available until October 2002. Weekly calculations completed through September 30, 2002 indicate cumulative doses for 3Q-2002 were well below the specified values. The sample analysis results for 3Q-2002 will be reflected in the January 2003 data submittal (for 4Q-2002). The sample analysis results for 2Q-2002 were as reported in the July 2002 data submittal (for 2Q-2002).

### Protected Area Security Performance Index



Thresholds: White > 0.080

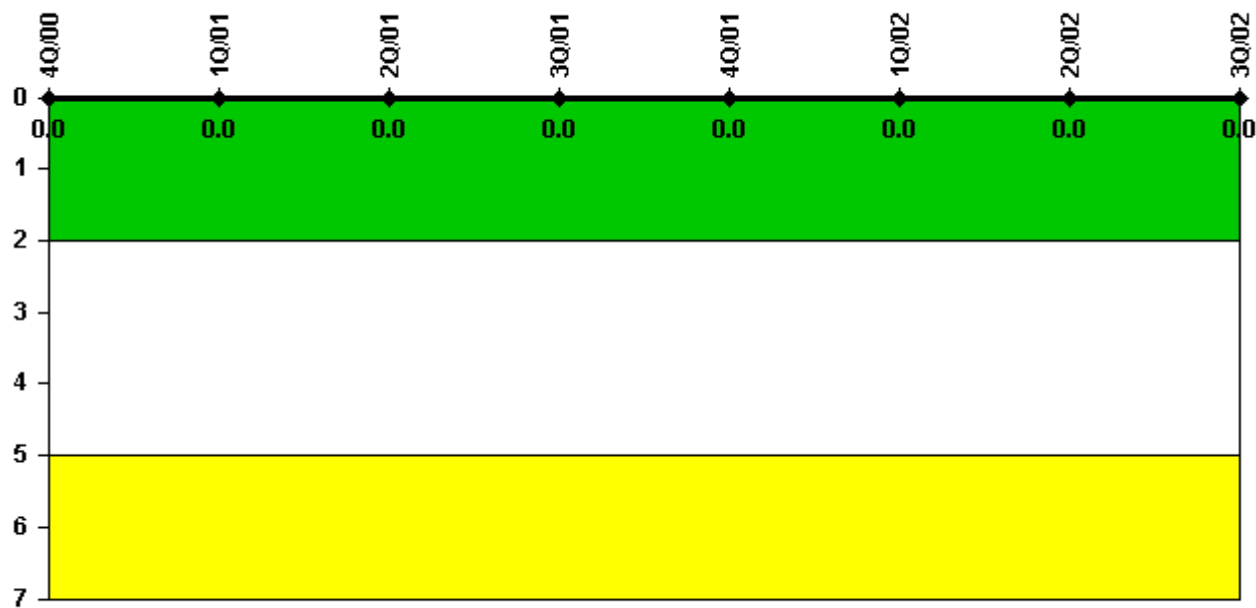
#### Notes

Protected Area Security Performance Index	4Q/00	1Q/01	2Q/01	3Q/01	4Q/01	1Q/02	2Q/02	3Q/02
IDS compensatory hours	60.10	137.10	151.10	73.20	36.60	173.60	137.20	82.40
CCTV compensatory hours	0	12.4	36.6	118.5	0	26.9	31.8	250.3
IDS normalization factor	2.15	2.15	2.15	2.15	2.15	2.15	2.15	2.15
CCTV normalization factor	1.0	1.0	1.0	1.0	1.0	1.0	1.0	1.0
Index Value	0.014	0.016	0.019	0.021	0.020	0.022	0.021	0.029

Licensee Comments: none



### Personnel Screening Program



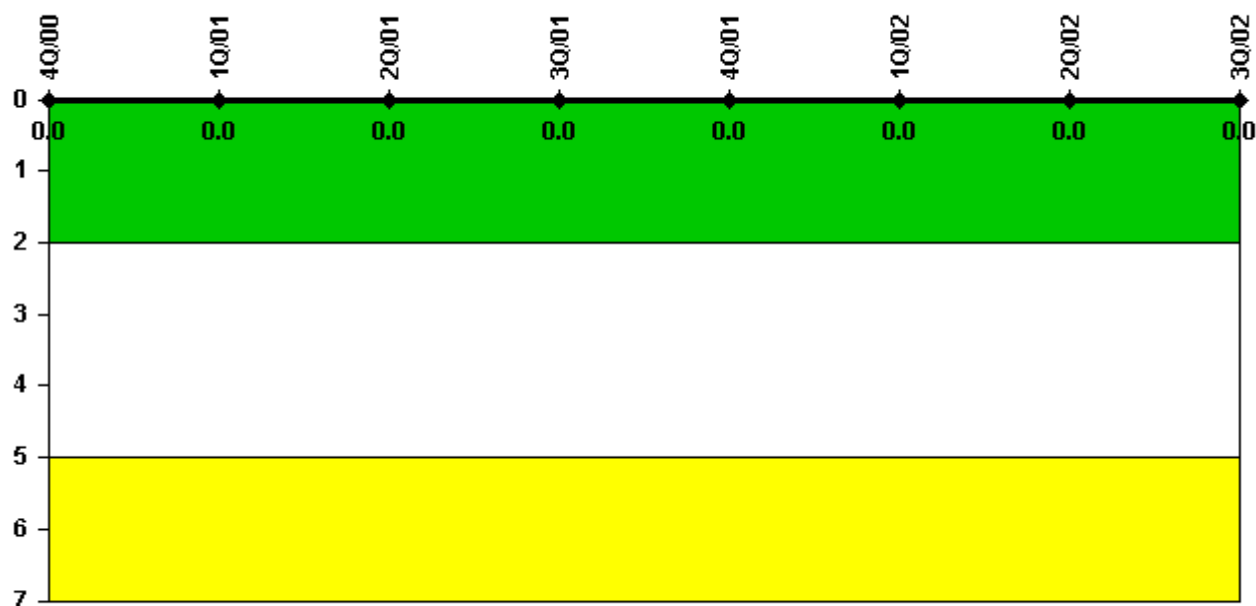
Thresholds: White > 2.0 Yellow > 5.0

#### Notes

Personnel Screening Program	4Q/00	1Q/01	2Q/01	3Q/01	4Q/01	1Q/02	2Q/02	3Q/02
Program failures	0	0	0	0	0	0	0	0
Indicator value	0	0	0	0	0	0	0	0

Licensee Comments: none

### FFD/Personnel Reliability



Thresholds: White > 2.0 Yellow > 5.0

#### Notes

FFD/Personnel Reliability	4Q/00	1Q/01	2Q/01	3Q/01	4Q/01	1Q/02	2Q/02	3Q/02
Program Failures	0	0	0	0	0	0	0	0
Indicator value	0	0	0	0	0	0	0	0

Licensee Comments: none

▲ [PI Summary](#) | [Inspection Findings Summary](#) | [Reactor Oversight Process](#)

Last Modified: October 22, 2002