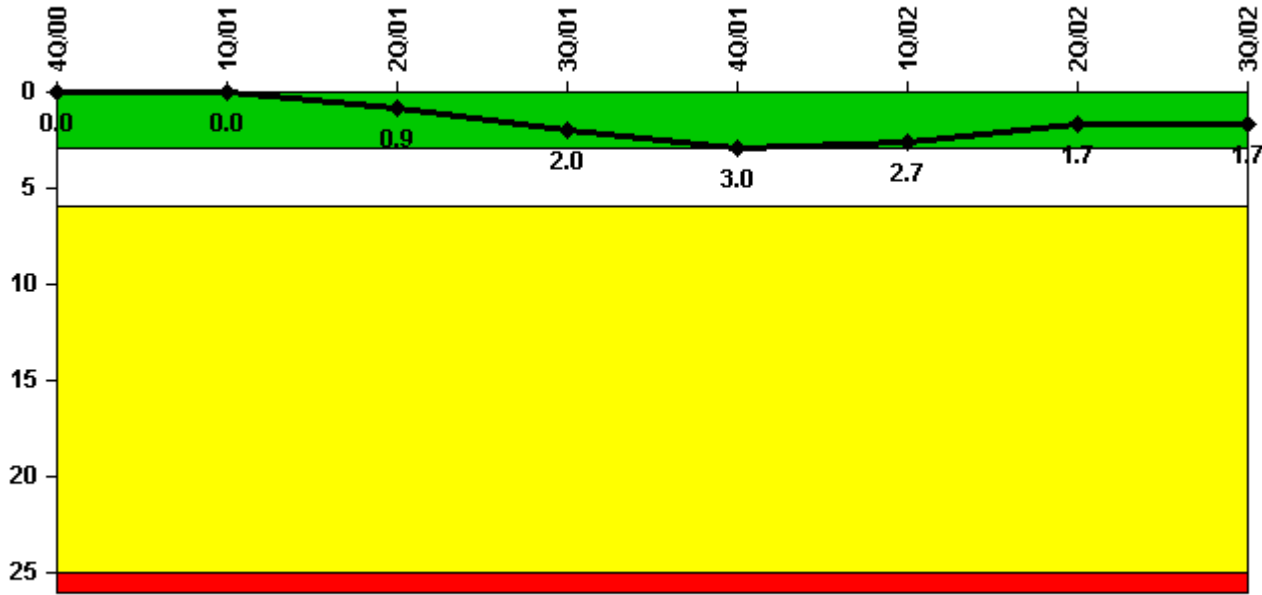


Perry 1

3Q/2002 Performance Indicators

Licensee's General Comments: none

Unplanned Scrams per 7000 Critical Hrs



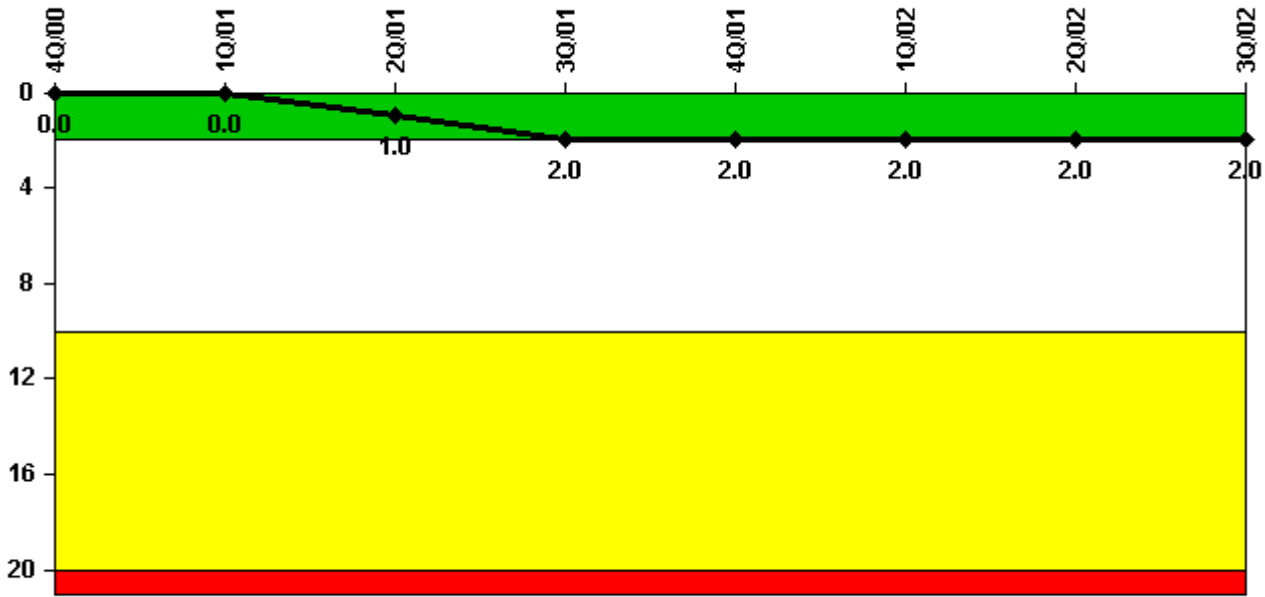
Thresholds: White > 3.0 Yellow > 6.0 Red > 25.0

Notes

Unplanned Scrams per 7000 Critical Hrs	4Q/00	1Q/01	2Q/01	3Q/01	4Q/01	1Q/02	2Q/02	3Q/02
Unplanned scrams	0	0	1.0	1.0	1.0	0	0	1.0
Critical hours	2209.0	1380.6	1640.9	1798.9	2156.2	2160.0	2026.0	1993.7
Indicator value	0	0	0.9	2.0	3.0	2.7	1.7	1.7

Licensee Comments: none

Scrams with Loss of Normal Heat Removal



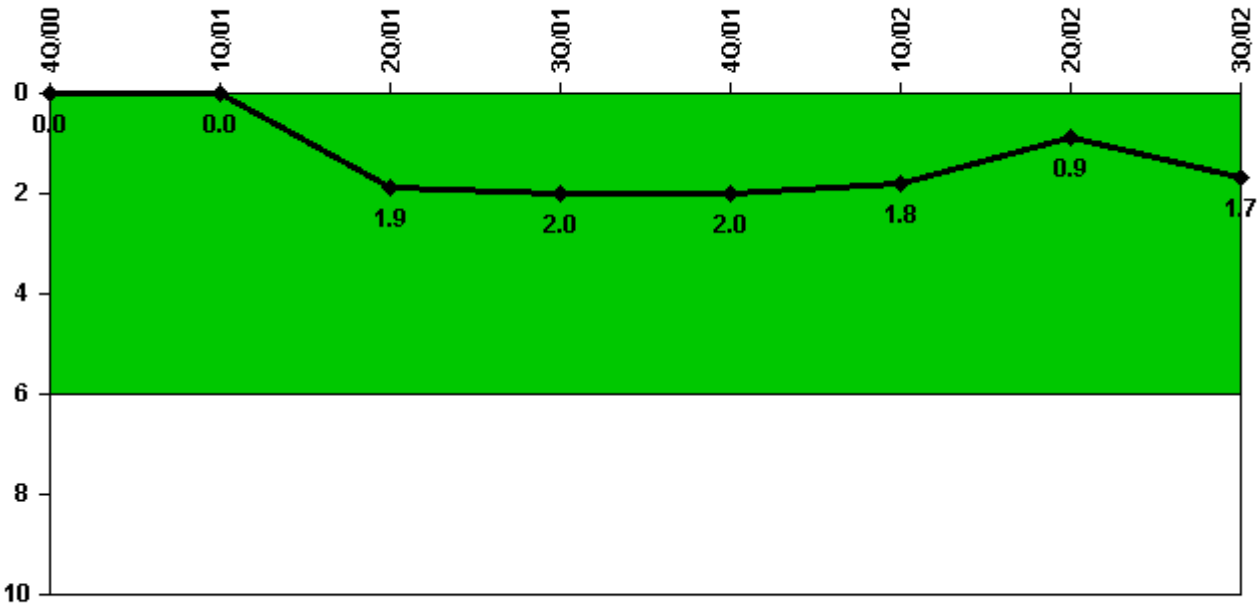
Thresholds: White > 2.0 Yellow > 10.0 Red > 20.0

Notes

Scrams with Loss of Normal Heat Removal	4Q/00	1Q/01	2Q/01	3Q/01	4Q/01	1Q/02	2Q/02	3Q/02
Scrams	0	0	1.0	1.0	0	0	0	0
Indicator value	0	0	1.0	2.0	2.0	2.0	2.0	2.0

Licensee Comments: none

Unplanned Power Changes per 7000 Critical Hrs



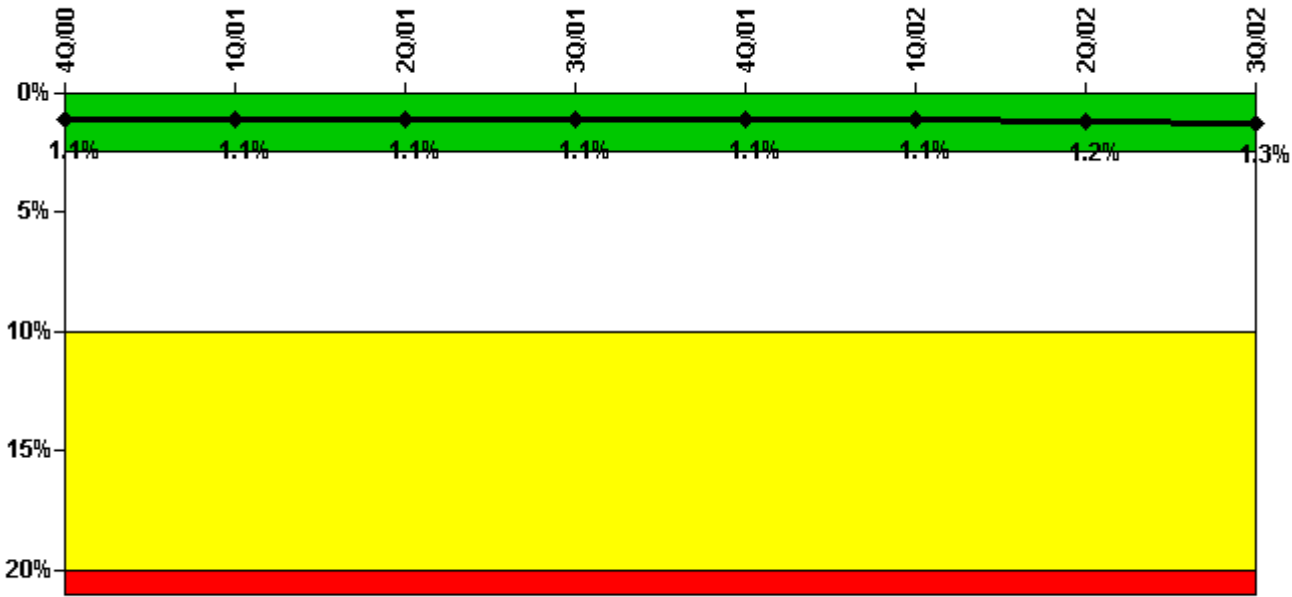
Thresholds: White > 6.0

Notes

Unplanned Power Changes per 7000 Critical Hrs	4Q/00	1Q/01	2Q/01	3Q/01	4Q/01	1Q/02	2Q/02	3Q/02
Unplanned power changes	0	0	2.0	0	0	0	1.0	1.0
Critical hours	2209.0	1380.6	1640.9	1798.9	2156.2	2160.0	2026.0	1993.7
Indicator value	0	0	1.9	2.0	2.0	1.8	0.9	1.7

Licensee Comments: none

Safety System Unavailability, Emergency AC Power, >2EDG



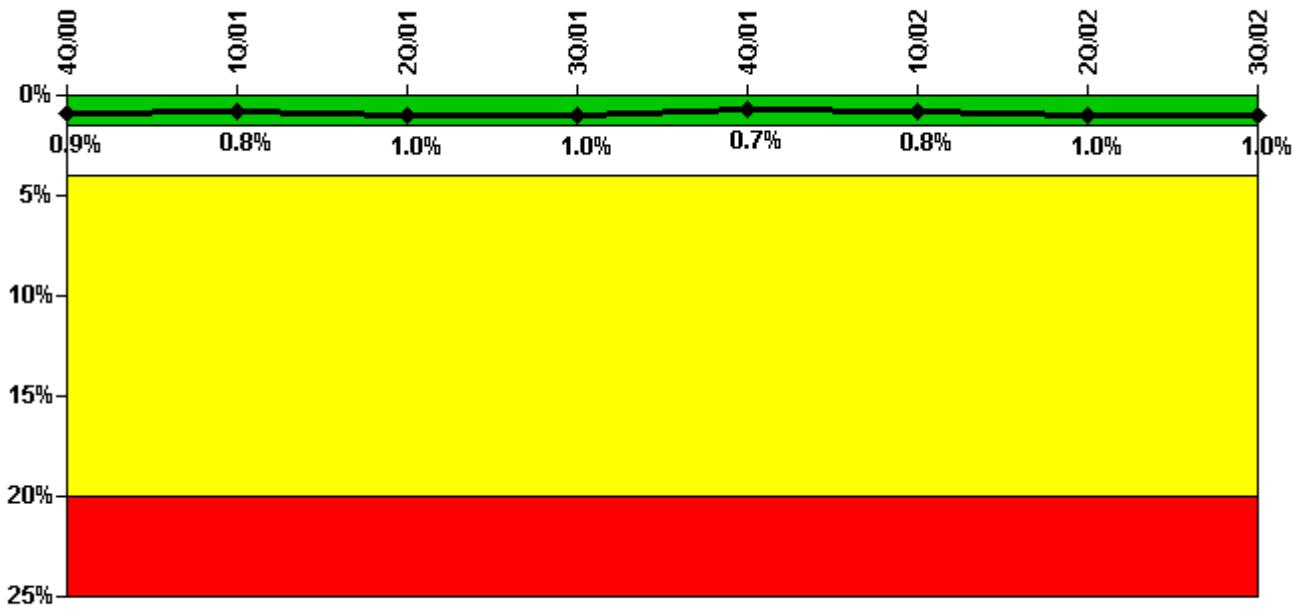
Thresholds: White > 2.5% Yellow > 10.0% Red > 20.0%

Notes

Safety System Unavailability, Emergency AC Power, >2EDG	4Q/00	1Q/01	2Q/01	3Q/01	4Q/01	1Q/02	2Q/02	3Q/02
Train 1								
Planned unavailable hours	4.75	6.97	5.87	53.05	15.95	25.00	58.03	5.80
Unplanned unavailable hours	0	0	13.92	0	0	0	0	0
Fault exposure hours	0	0	0	0	0	0	0	0
Effective Reset hours	0	0	0	0	0	0	0	0
Required hours	2209.00	2160.00	2183.00	2208.00	2209.00	2160.00	2183.00	2208.00
Train 2								
Planned unavailable hours	34.35	14.57	7.56	17.10	64.51	6.74	20.78	4.69
Unplanned unavailable hours	122.83	0	0	0	0	0	0	65.71
Fault exposure hours	0	0	0	0	0	0	0	0
Effective Reset hours	0	0	0	0	0	0	0	0
Required hours	2209.00	2160.00	2183.00	2208.00	2209.00	2160.00	2183.00	2208.00
Train 3								
Planned unavailable hours	25.72	1.00	33.69	12.15	2.15	1.44	1.26	1.55
Unplanned unavailable hours	0	0	0	4.58	0	0	0	0
Fault exposure hours	0	0	0	0	0	0	0	0
Effective Reset hours	0	0	0	0	0	0	0	0
Required hours	2209.00	2160.00	2183.00	2208.00	2209.00	2160.00	2183.00	2208.00
Indicator value	1.1%	1.1%	1.1%	1.1%	1.1%	1.1%	1.2%	1.3%

Licensee Comments: none

Safety System Unavailability, High Pressure Injection System (HPCS)



Thresholds: White > 1.5% Yellow > 4.0% Red > 20.0%

Notes

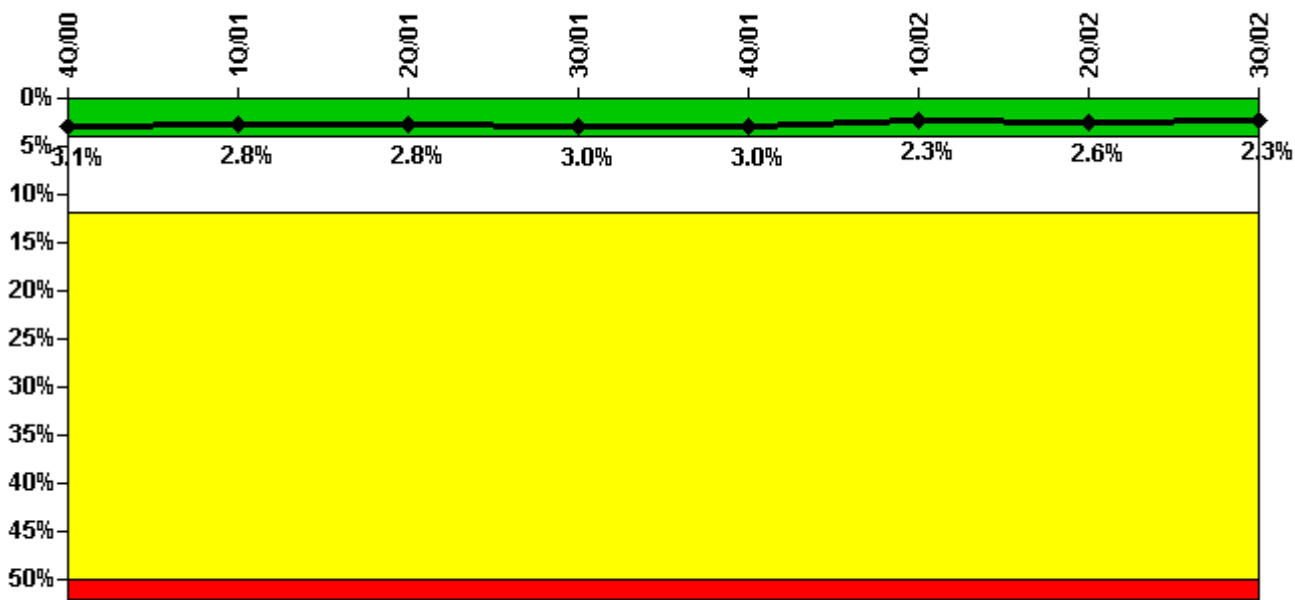
Safety System Unavailability, High Pressure Injection System (HPCS)	4Q/00	1Q/01	2Q/01	3Q/01	4Q/01	1Q/02	2Q/02	3Q/02
Train 1								
Planned unavailable hours	9.07	1.48	31.13	2.74	1.22	45.10	97.85	4.12
Unplanned unavailable hours	0	0	0	0	0	0	0	0
Fault exposure hours	0	0	0	0	0	0	0	0
Effective Reset hours	0	0	0	0	0	0	0	0
Required hours	2209.00	1380.60	1640.90	1798.90	2156.20	2160.00	2026.00	1993.68
Indicator value	0.9%	0.8%	1.0%	1.0%	0.7%	0.8%	1.0%	1.0%

Licensee Comments:

3Q/02: Oct 2002: Correction for June 2002 data (Q2/2002). Evaluation of previously reported unplanned unavailability for June (4.15 hours) found that there was no unavailability; therefore, those hours have been removed. This change does not affect the indicator color.

2Q/02: Historical data correction: As a result of additional review of unavailability associated with system testing, previously reported data for the period from July 2000 through December 2001 has been adjusted with an additional 4.6 hours of unavailability. These changes do not affect the indicator color. 1Q/02: June unplanned unavailable hours updated. See note Q3/2002.

Safety System Unavailability, Heat Removal System (RCIC)



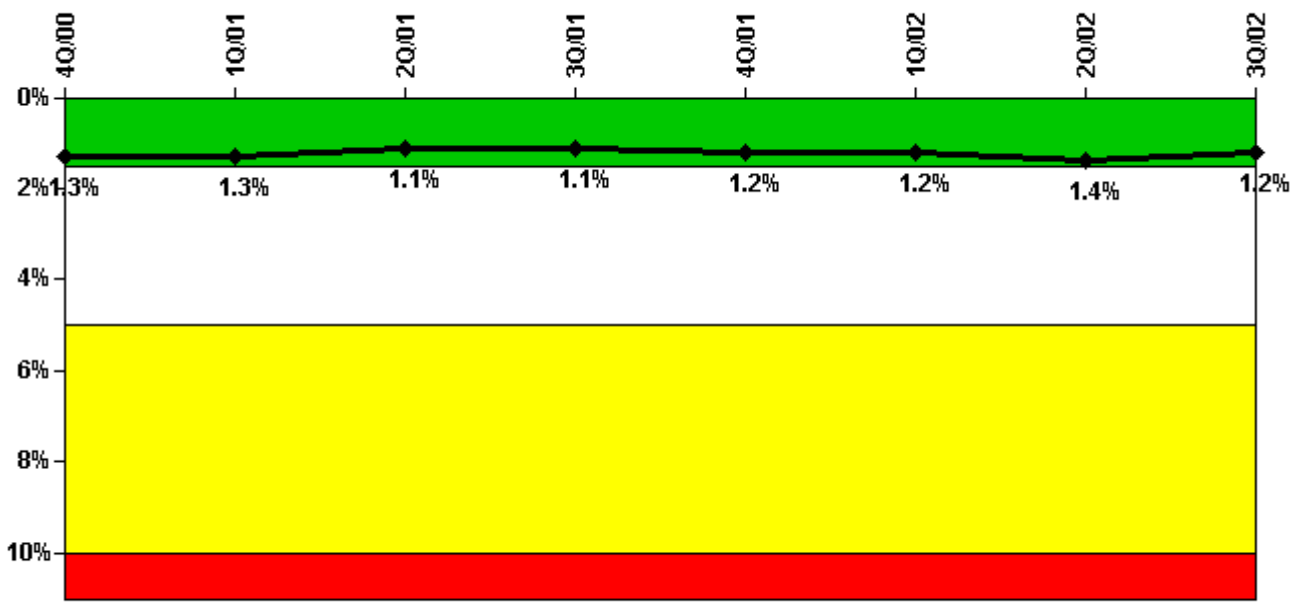
Thresholds: White > 4.0% Yellow > 12.0% Red > 50.0%

Notes

Safety System Unavailability, Heat Removal System (RCIC)	4Q/00	1Q/01	2Q/01	3Q/01	4Q/01	1Q/02	2Q/02	3Q/02
Train 1								
Planned unavailable hours	16.98	61.90	43.59	45.66	3.35	114.70	92.58	3.20
Unplanned unavailable hours	0	0	0	2.90	0	0	0	0
Fault exposure hours	0	0	0	0	0	0	0	0
Effective Reset hours	0	0	0	0	0	0	0	0
Required hours	2209.00	1380.60	1640.90	1798.90	2156.20	2160.00	2026.00	1993.68
Indicator value	3.1%	2.8%	2.8%	3.0%	3.0%	2.3%	2.6%	2.3%

Licensee Comments: none

Safety System Unavailability, Residual Heat Removal System



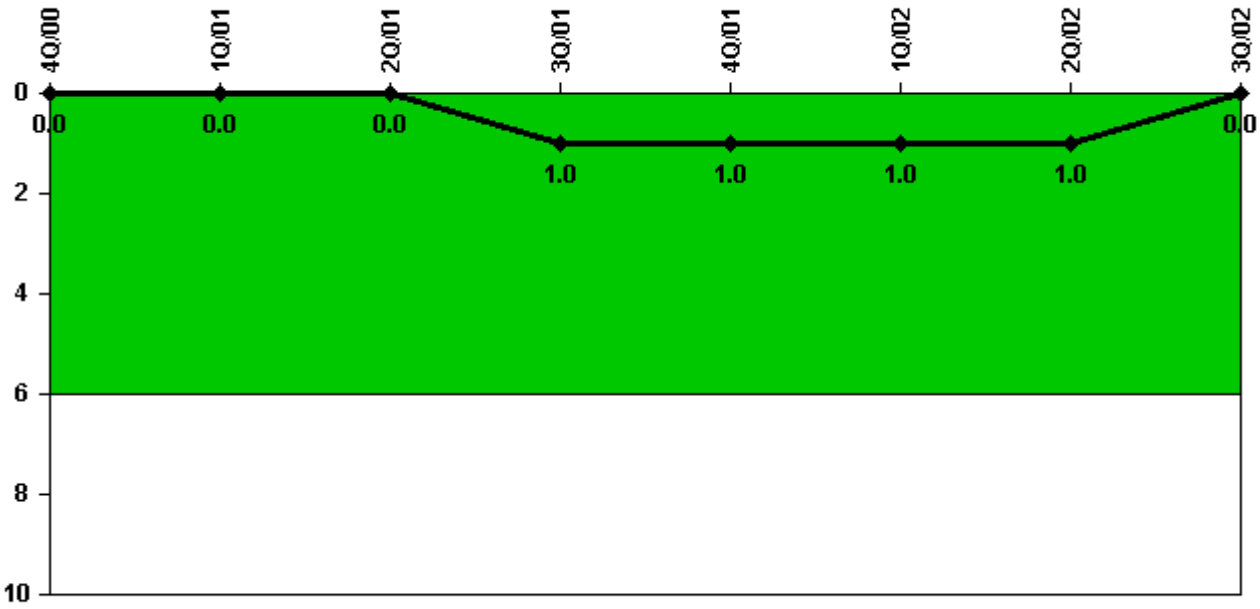
Thresholds: White > 1.5% Yellow > 5.0% Red > 10.0%

Notes

Safety System Unavailability, Residual Heat Removal System	4Q/00	1Q/01	2Q/01	3Q/01	4Q/01	1Q/02	2Q/02	3Q/02
Train 1								
Planned unavailable hours	15.28	3.65	4.87	82.80	9.63	1.38	101.22	3.24
Unplanned unavailable hours	0	0.85	0	0	0	0	0	17.63
Fault exposure hours	0	0	0	0	0	0	0	0
Effective Reset hours	0	0	0	0	0	0	0	0
Required hours	2209.00	2160.00	2183.00	2208.00	2209.00	2160.00	2183.00	2208.00
Train 2								
Planned unavailable hours	50.50	0.50	0	0.55	41.42	0	0	0.55
Unplanned unavailable hours	11.92	0	0	0	0	0	0	0
Fault exposure hours	0	0	0	0	0	0	0	0
Effective Reset hours	0	0	0	0	0	0	0	0
Required hours	2209.00	2160.00	2183.00	2208.00	2209.00	2160.00	2183.00	2208.00
Indicator value	1.3%	1.3%	1.1%	1.1%	1.2%	1.2%	1.4%	1.2%

Licensee Comments: none

Safety System Functional Failures (BWR)



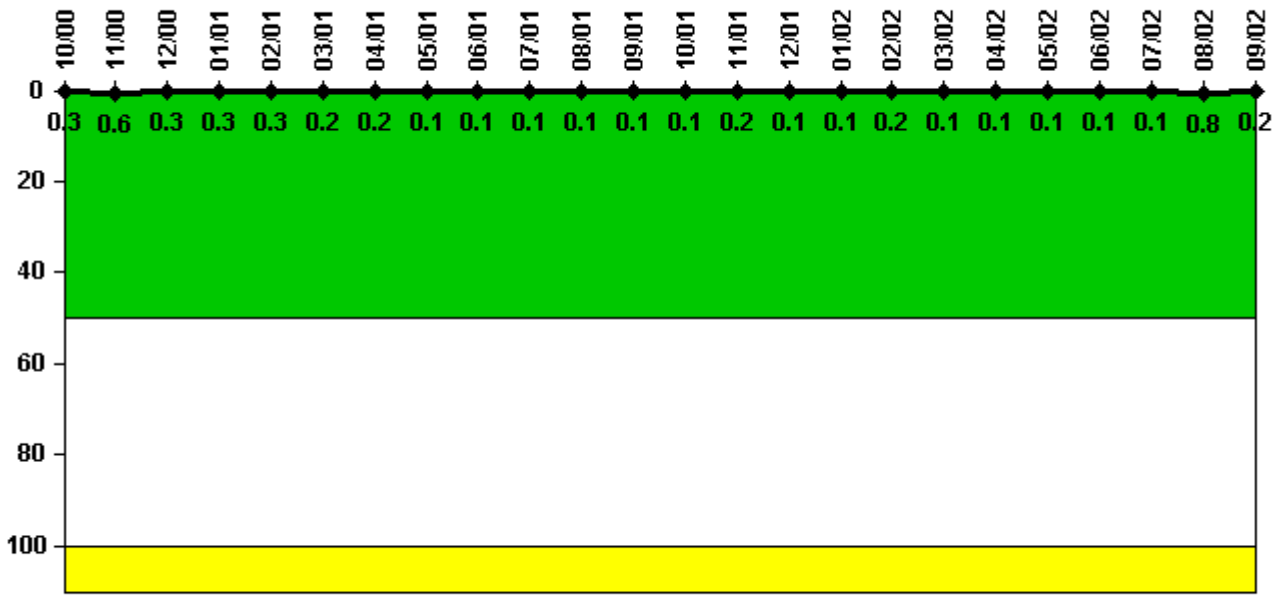
Thresholds: White > 6.0

Notes

Safety System Functional Failures (BWR)	4Q/00	1Q/01	2Q/01	3Q/01	4Q/01	1Q/02	2Q/02	3Q/02
Safety System Functional Failures	0	0	0	1	0	0	0	0
Indicator value	0	0	0	1	1	1	1	0

Licensee Comments: none

Reactor Coolant System Activity



Thresholds: White > 50.0 Yellow > 100.0

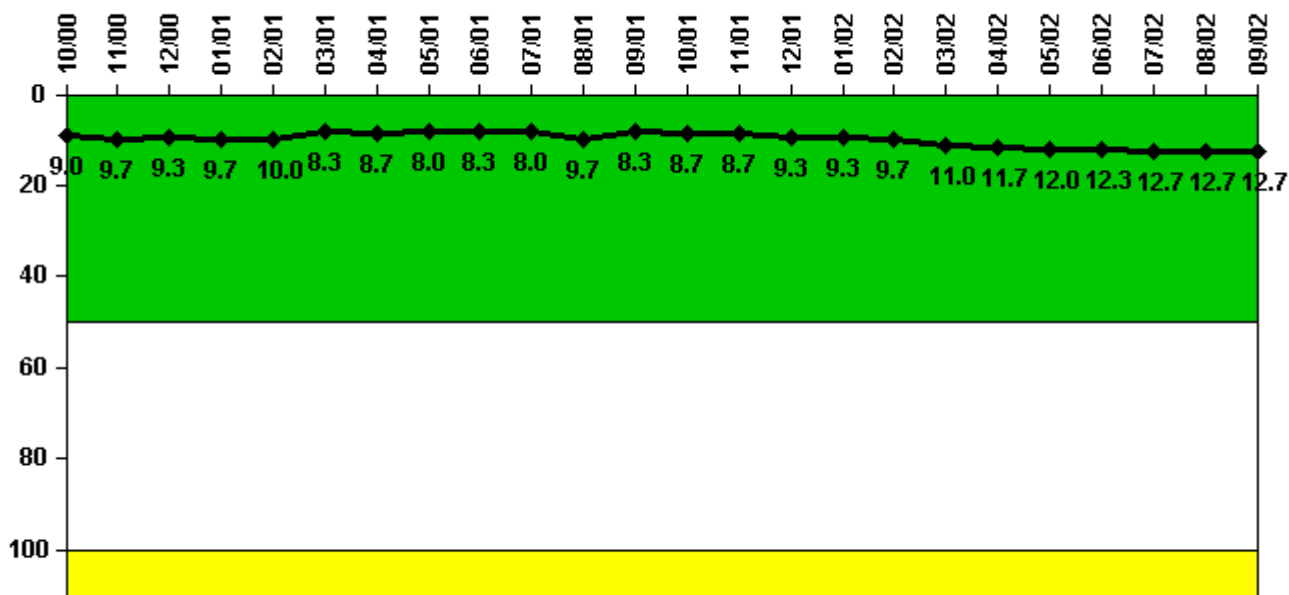
Notes

Reactor Coolant System Activity	10/00	11/00	12/00	1/01	2/01	3/01	4/01	5/01	6/01	7/01	8/01	9/01
Maximum activity	0.000653	0.001110	0.000656	0.000635	0.000595	0.000437	0.000392	0.000206	0.000270	0.000258	0.000157	0.000197
Technical specification limit	0.2	0.2	0.2	0.2	0.2	0.2	0.2	0.2	0.2	0.2	0.2	0.2
Indicator value	0.3	0.6	0.3	0.3	0.3	0.2	0.2	0.1	0.1	0.1	0.1	0.1

Reactor Coolant System Activity	10/01	11/01	12/01	1/02	2/02	3/02	4/02	5/02	6/02	7/02	8/02	9/02
Maximum activity	0.000173	0.000311	0.000217	0.000285	0.000315	0.000214	0.000218	0.000241	0.000155	0.000158	0.001530	0.000397
Technical specification limit	0.2	0.2	0.2	0.2	0.2	0.2	0.2	0.2	0.2	0.2	0.2	0.2
Indicator value	0.1	0.2	0.1	0.1	0.2	0.1	0.1	0.1	0.1	0.1	0.8	0.2

Licensee Comments: none

Reactor Coolant System Leakage



Thresholds: White > 50.0 Yellow > 100.0

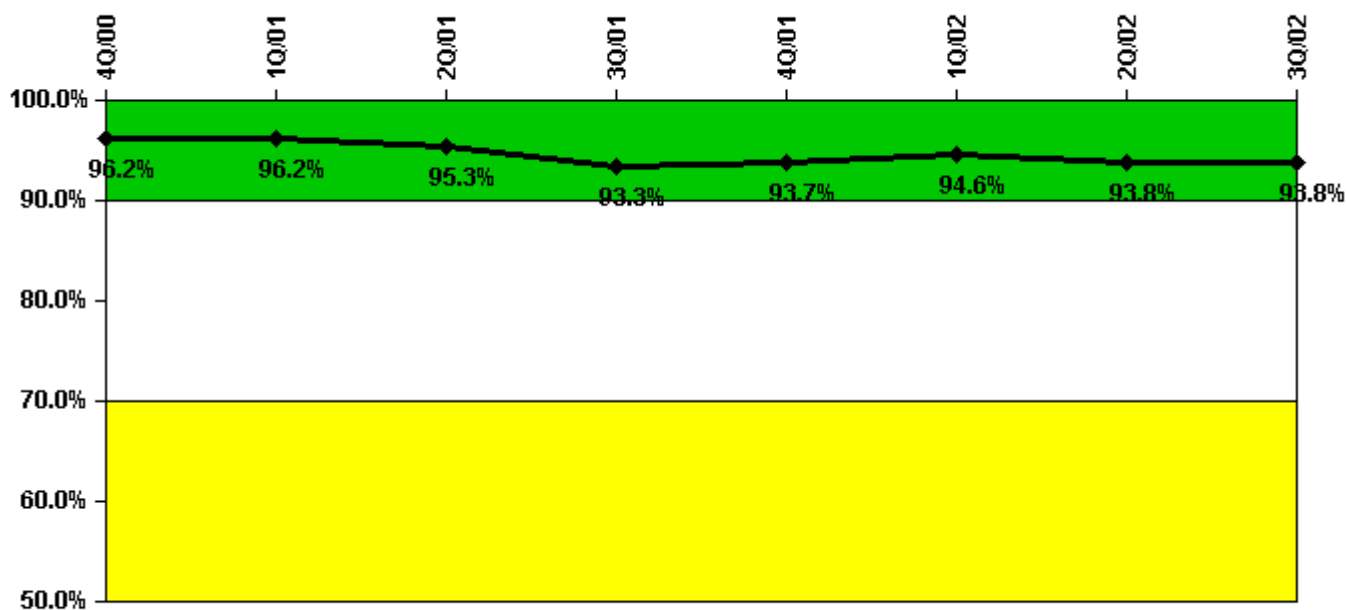
Notes

Reactor Coolant System Leakage	10/00	11/00	12/00	1/01	2/01	3/01	4/01	5/01	6/01	7/01	8/01	9/01
Maximum leakage	2.700	2.900	2.800	2.900	3.000	2.500	2.600	2.400	2.500	2.400	2.900	2.500
Technical specification limit	30.0	30.0	30.0	30.0	30.0	30.0	30.0	30.0	30.0	30.0	30.0	30.0
Indicator value	9.0	9.7	9.3	9.7	10.0	8.3	8.7	8.0	8.3	8.0	9.7	8.3

Reactor Coolant System Leakage	10/01	11/01	12/01	1/02	2/02	3/02	4/02	5/02	6/02	7/02	8/02	9/02
Maximum leakage	2.600	2.600	2.800	2.800	2.900	3.300	3.500	3.600	3.700	3.800	3.800	3.800
Technical specification limit	30.0	30.0	30.0	30.0	30.0	30.0	30.0	30.0	30.0	30.0	30.0	30.0
Indicator value	8.7	8.7	9.3	9.3	9.7	11.0	11.7	12.0	12.3	12.7	12.7	12.7

Licensee Comments: none

Drill/Exercise Performance



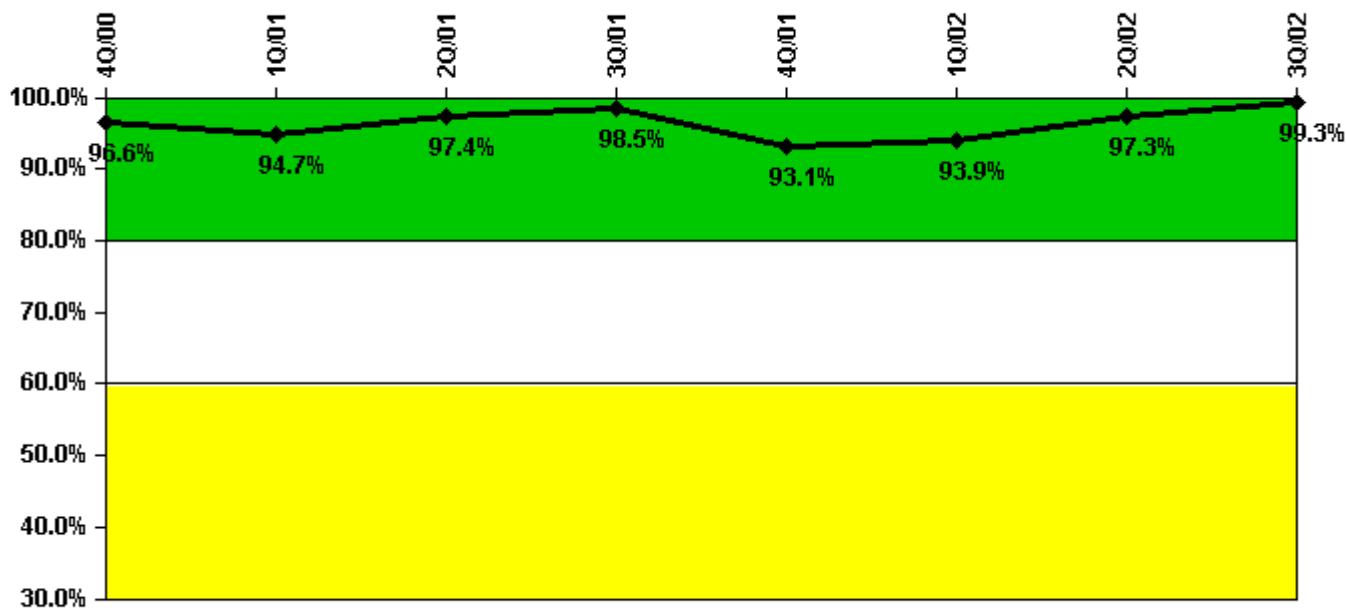
Thresholds: White < 90.0% Yellow < 70.0%

Notes

Drill/Exercise Performance	4Q/00	1Q/01	2Q/01	3Q/01	4Q/01	1Q/02	2Q/02	3Q/02
Successful opportunities	45.0	0	13.0	24.0	26.0	20.0	39.0	16.0
Total opportunities	46.0	0	15.0	28.0	26.0	20.0	42.0	18.0
Indicator value	96.2%	96.2%	95.3%	93.3%	93.7%	94.6%	93.8%	93.8%

Licensee Comments: none

ERO Drill Participation



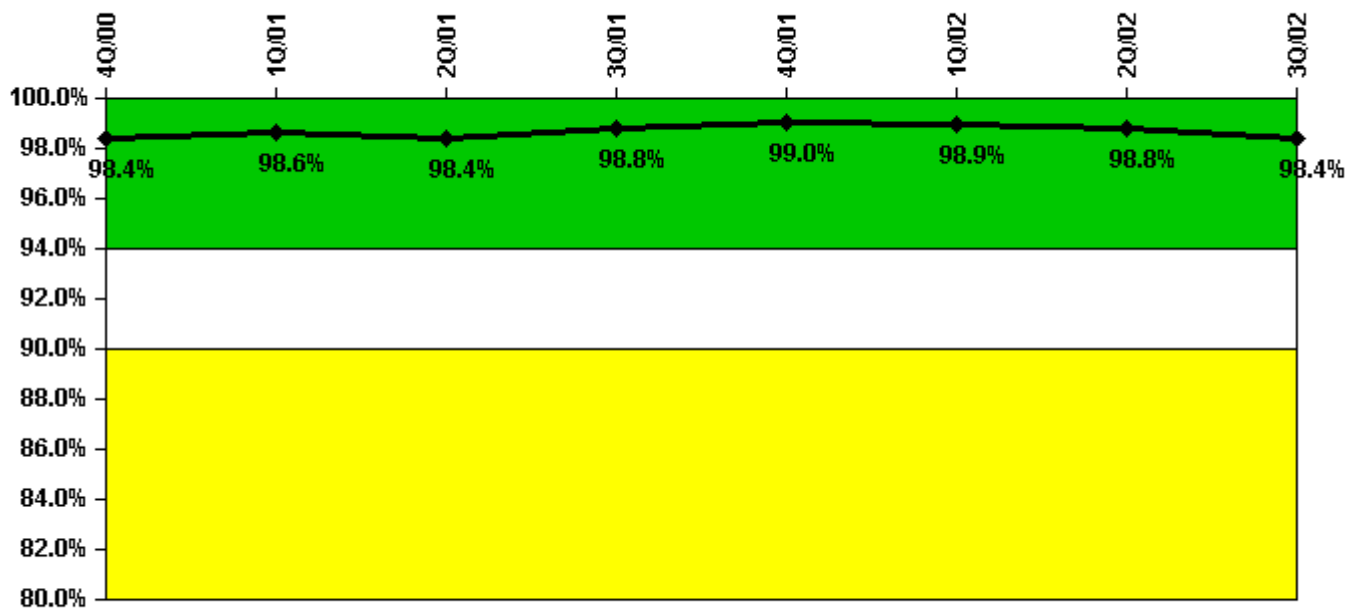
Thresholds: White < 80.0% Yellow < 60.0%

Notes

ERO Drill Participation	4Q/00	1Q/01	2Q/01	3Q/01	4Q/01	1Q/02	2Q/02	3Q/02
Participating Key personnel	113.0	107.0	111.0	134.0	135.0	139.0	144.0	144.0
Total Key personnel	117.0	113.0	114.0	136.0	145.0	148.0	148.0	145.0
Indicator value	96.6%	94.7%	97.4%	98.5%	93.1%	93.9%	97.3%	99.3%

Licensee Comments: none

Alert & Notification System



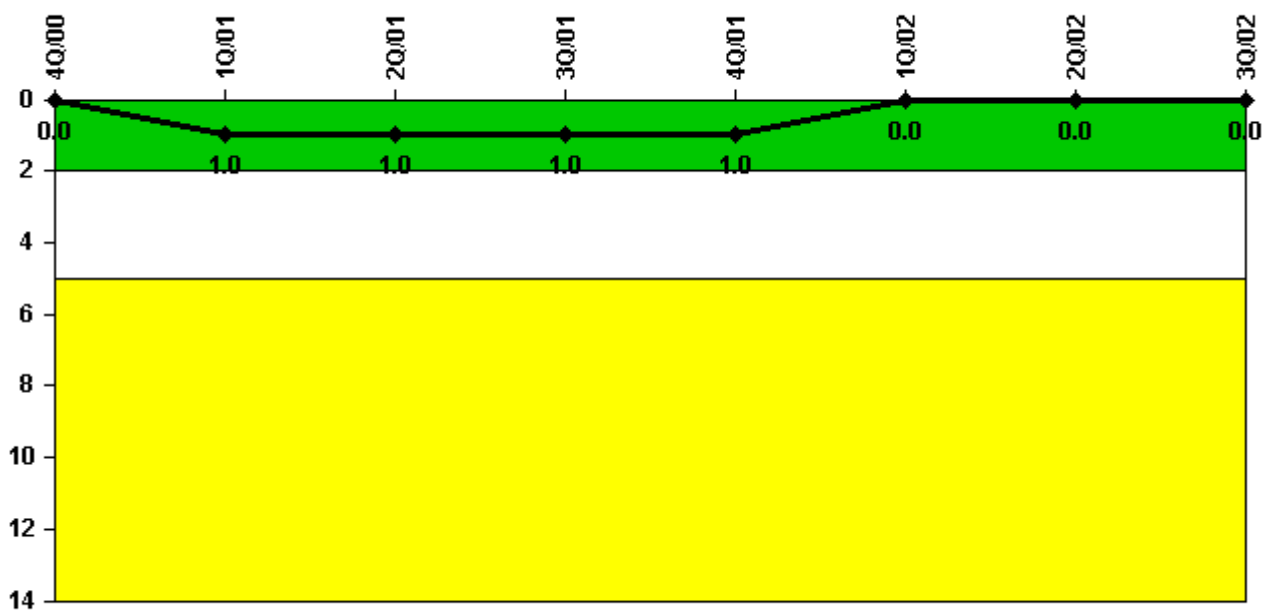
Thresholds: White < 94.0% Yellow < 90.0%

Notes

Alert & Notification System	4Q/00	1Q/01	2Q/01	3Q/01	4Q/01	1Q/02	2Q/02	3Q/02
Successful siren-tests	523	528	521	530	527	526	519	596
Total sirens-tests	532	532	532	532	532	532	532	608
Indicator value	98.4%	98.6%	98.4%	98.8%	99.0%	98.9%	98.8%	98.4%

Licensee Comments: none

Occupational Exposure Control Effectiveness



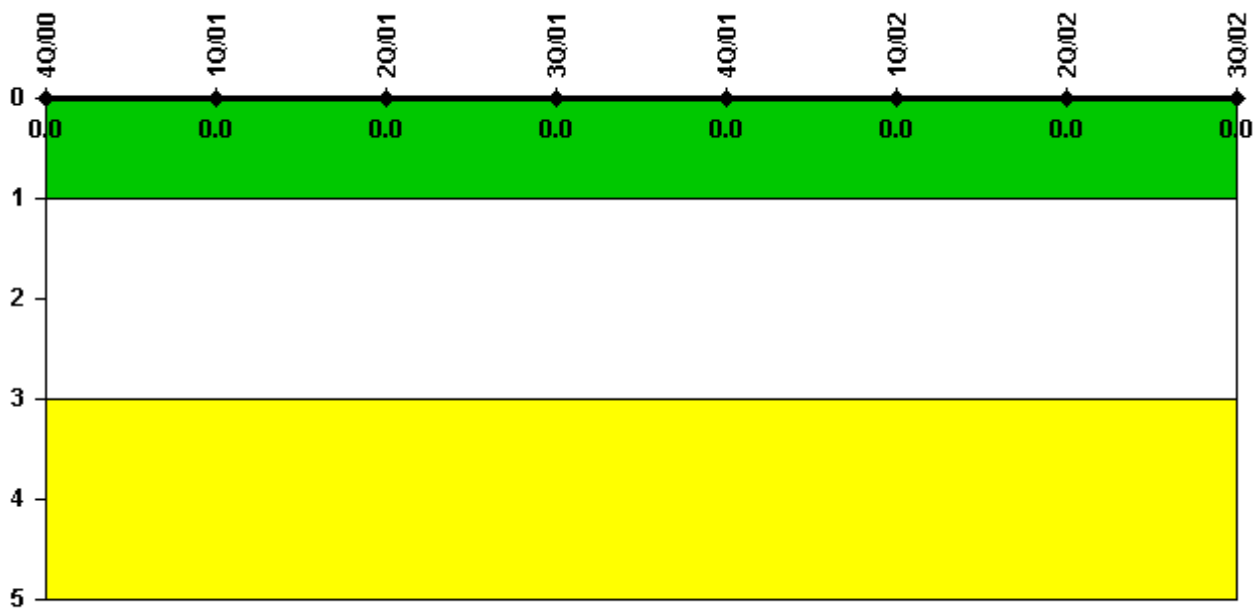
Thresholds: White > 2.0 Yellow > 5.0

Notes

Occupational Exposure Control Effectiveness	4Q/00	1Q/01	2Q/01	3Q/01	4Q/01	1Q/02	2Q/02	3Q/02
High radiation area occurrences	0	1	0	0	0	0	0	0
Very high radiation area occurrences	0	0	0	0	0	0	0	0
Unintended exposure occurrences	0	0	0	0	0	0	0	0
Indicator value	0	1	1	1	1	0	0	0

Licensee Comments: none

RETS/ODCM Radiological Effluent



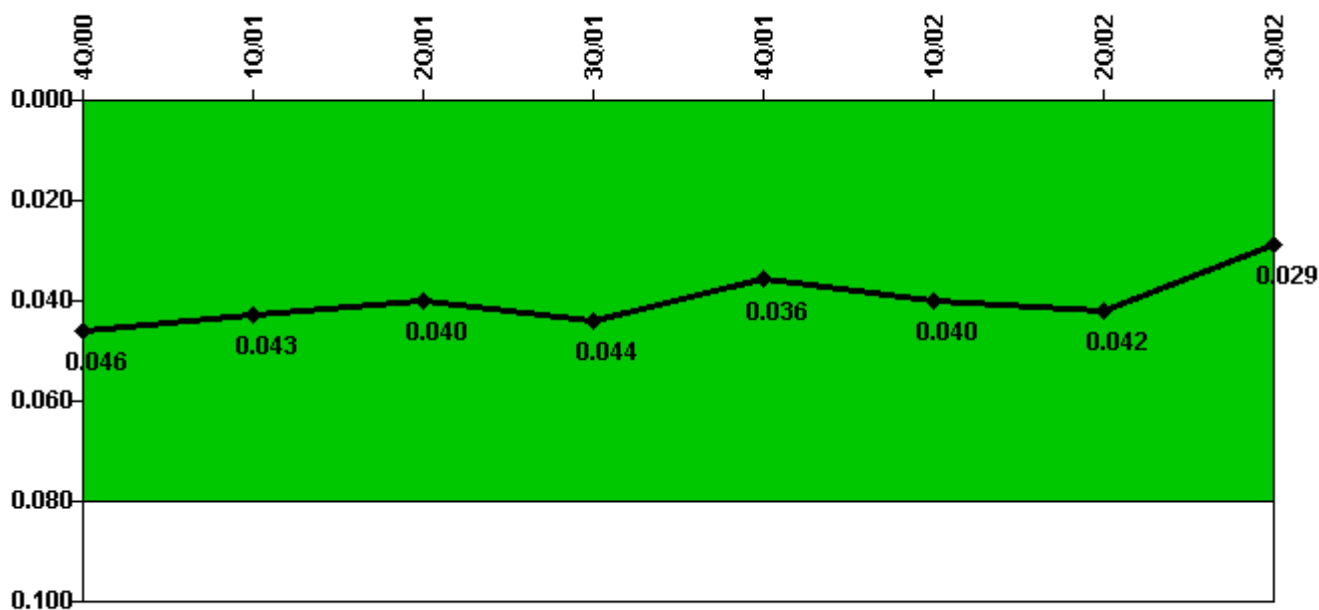
Thresholds: White > 1.0 Yellow > 3.0

Notes

RETS/ODCM Radiological Effluent	4Q/00	1Q/01	2Q/01	3Q/01	4Q/01	1Q/02	2Q/02	3Q/02
RETS/ODCM occurrences	0	0	0	0	0	0	0	0
Indicator value	0	0	0	0	0	0	0	0

Licensee Comments: none

Protected Area Security Performance Index



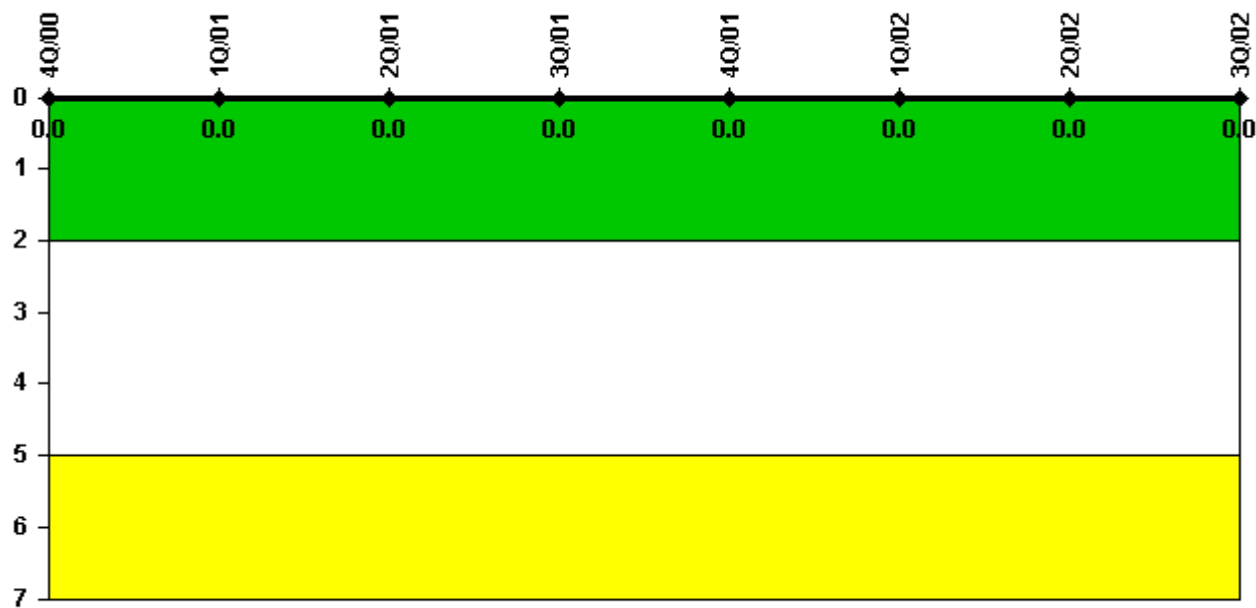
Thresholds: White > 0.080

Notes

Protected Area Security Performance Index	4Q/00	1Q/01	2Q/01	3Q/01	4Q/01	1Q/02	2Q/02	3Q/02
IDS compensatory hours	208.70	59.40	197.50	289.60	105.70	149.40	219.40	18.50
CCTV compensatory hours	36.2	28.5	1.0	14.3	0	17.3	12.7	26.9
IDS normalization factor	1.10	1.10	1.10	1.10	1.10	1.10	1.10	1.10
CCTV normalization factor	1.0	1.0	1.0	1.0	1.0	1.0	1.0	1.0
Index Value	0.046	0.043	0.040	0.044	0.036	0.040	0.042	0.029

Licensee Comments: none

Personnel Screening Program



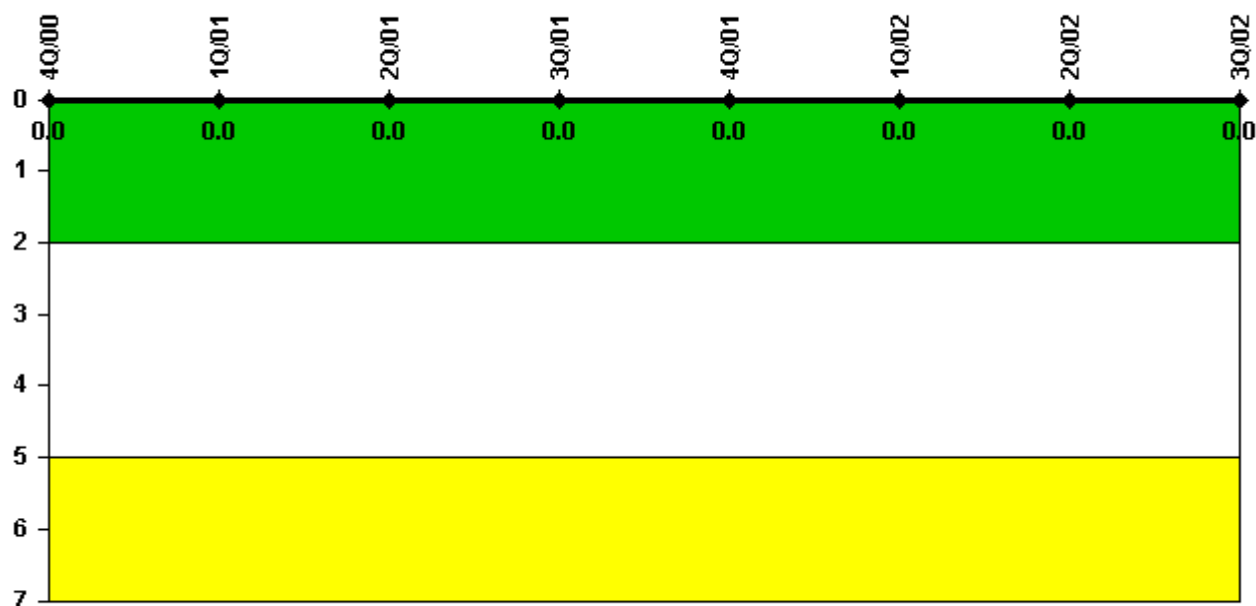
Thresholds: White > 2.0 Yellow > 5.0

Notes

Personnel Screening Program	4Q/00	1Q/01	2Q/01	3Q/01	4Q/01	1Q/02	2Q/02	3Q/02
Program failures	0	0	0	0	0	0	0	0
Indicator value	0	0	0	0	0	0	0	0

Licensee Comments: none

FFD/Personnel Reliability



Thresholds: White > 2.0 Yellow > 5.0

Notes

FFD/Personnel Reliability	4Q/00	1Q/01	2Q/01	3Q/01	4Q/01	1Q/02	2Q/02	3Q/02
Program Failures	0	0	0	0	0	0	0	0
Indicator value	0	0	0	0	0	0	0	0

Licensee Comments: none

▲ [PI Summary](#) | [Inspection Findings Summary](#) | [Reactor Oversight Process](#)

Last Modified: October 22, 2002