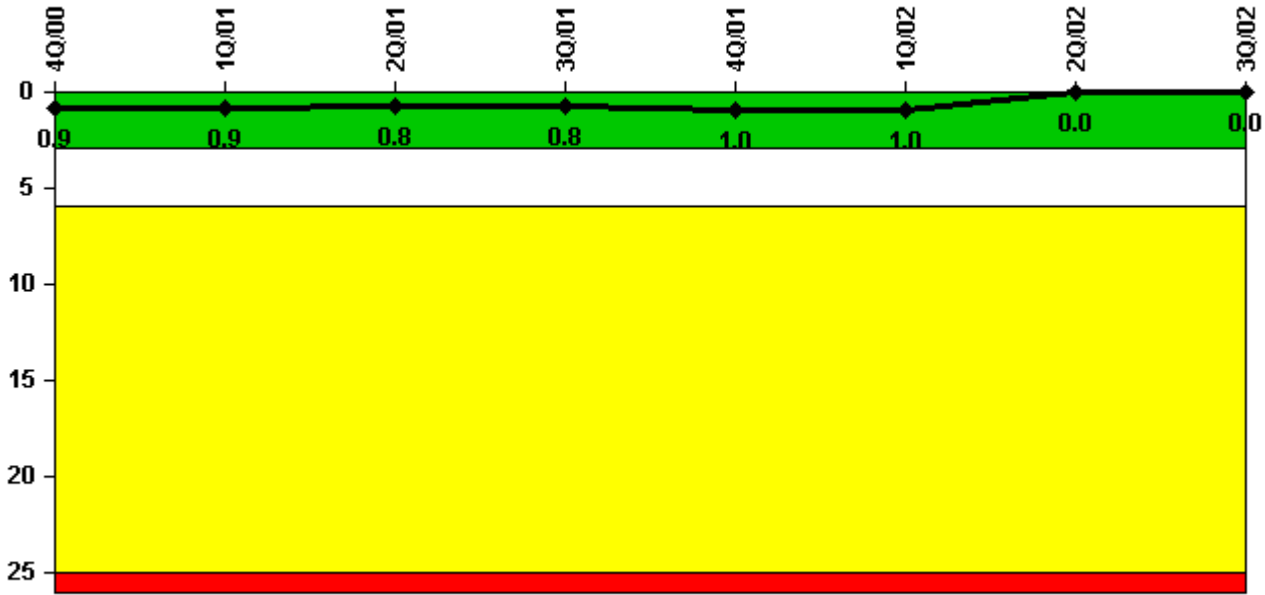


# Kewaunee

## 3Q/2002 Performance Indicators

Licensee's General Comments: none

### Unplanned Scrams per 7000 Critical Hrs



**Thresholds: White > 3.0 Yellow > 6.0 Red > 25.0**

### Notes

Unplanned Scrams per 7000 Critical Hrs	4Q/00	1Q/01	2Q/01	3Q/01	4Q/01	1Q/02	2Q/02	3Q/02
Unplanned scrams	0	0	1.0	0	0	0	0	0
Critical hours	2209.0	2160.0	2156.8	2040.2	723.8	2160.0	1951.8	2208.0
Indicator value	0.9	0.9	0.8	0.8	1.0	1.0	0	0

Licensee Comments: none

### Scrams with Loss of Normal Heat Removal



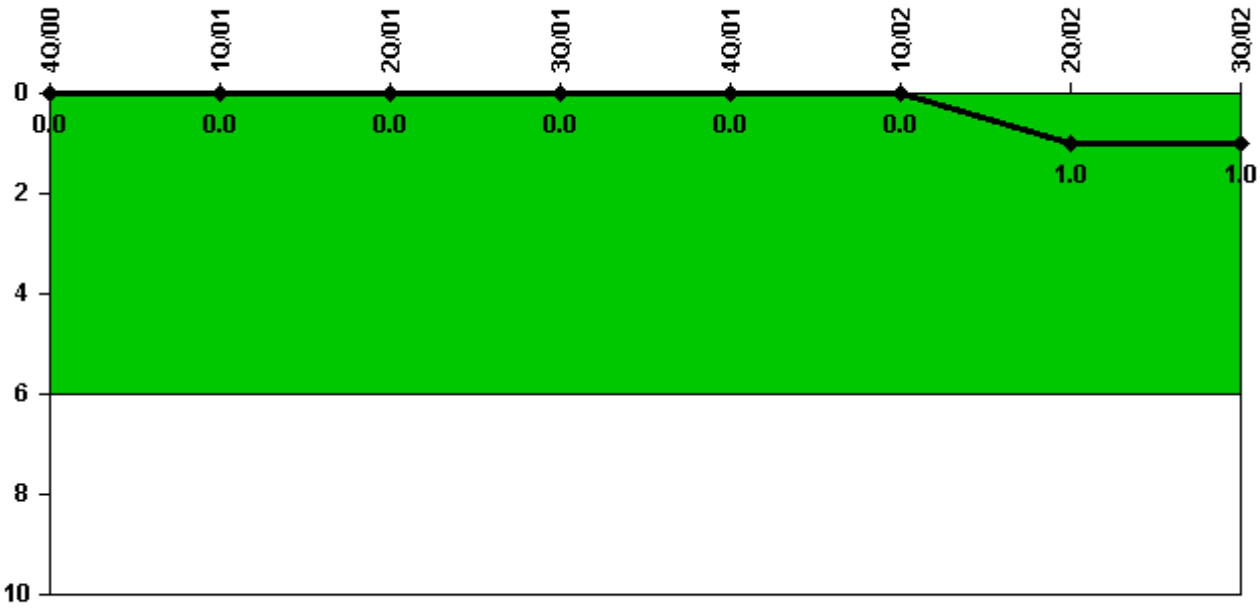
Thresholds: White > 2.0 Yellow > 10.0 Red > 20.0

#### Notes

Scrams with Loss of Normal Heat Removal	4Q/00	1Q/01	2Q/01	3Q/01	4Q/01	1Q/02	2Q/02	3Q/02
Scrams	0	0	0	0	0	0	0	0
Indicator value	0	0	0	0	0	0	0	0

Licensee Comments: none

### Unplanned Power Changes per 7000 Critical Hrs



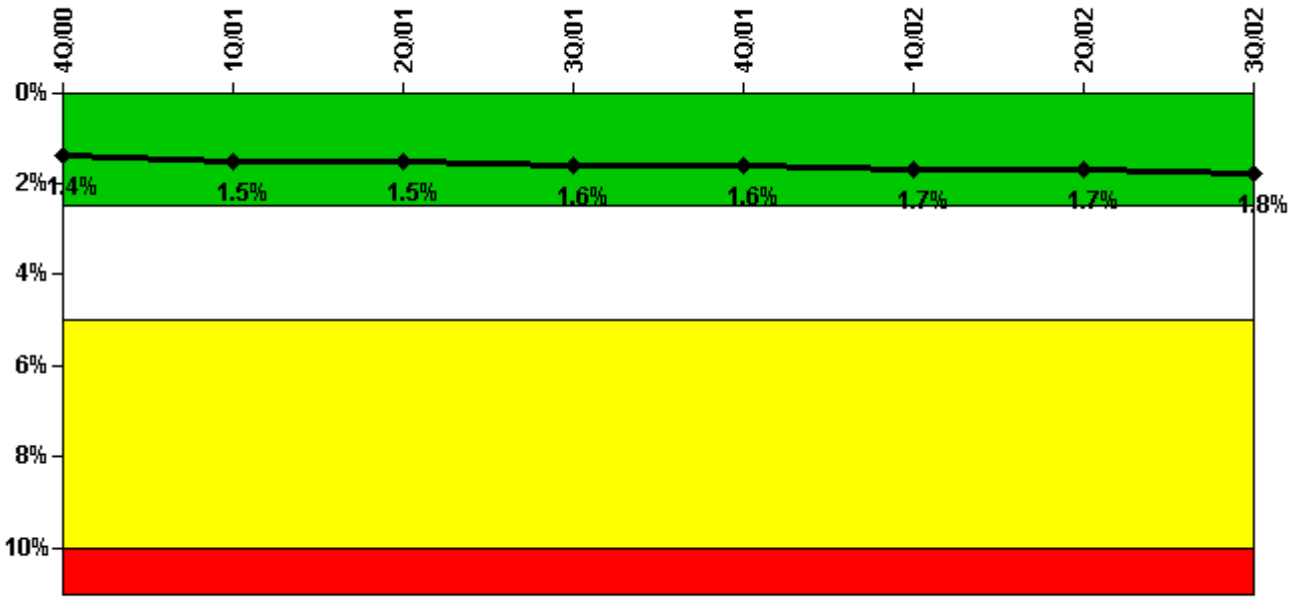
Thresholds: White > 6.0

#### Notes

Unplanned Power Changes per 7000 Critical Hrs	4Q/00	1Q/01	2Q/01	3Q/01	4Q/01	1Q/02	2Q/02	3Q/02
Unplanned power changes	0	0	0	0	0	0	1.0	0
Critical hours	2209.0	2160.0	2156.8	2040.2	723.8	2160.0	1951.8	2208.0
Indicator value	0	0	0	0	0	0	1.0	1.0

Licensee Comments: none

### Safety System Unavailability, Emergency AC Power



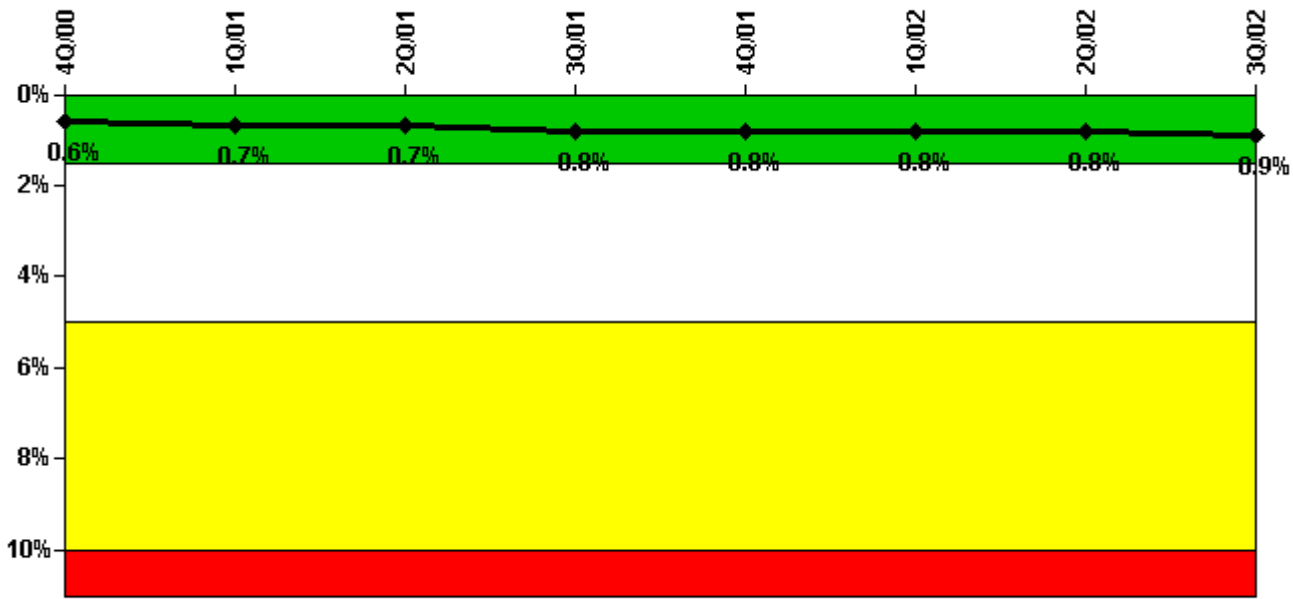
Thresholds: White > 2.5% Yellow > 5.0% Red > 10.0%

#### Notes

Safety System Unavailability, Emergency AC Power	4Q/00	1Q/01	2Q/01	3Q/01	4Q/01	1Q/02	2Q/02	3Q/02
<b>Train 1</b>								
Planned unavailable hours	25.48	34.02	47.22	25.83	32.54	24.70	35.69	21.83
Unplanned unavailable hours	5.07	0	0	0	0	0	4.67	0
Fault exposure hours	0	0	0	0	0	0	0	0
Effective Reset hours	0	0	0	0	0	0	0	0
Required hours	2209.00	2160.00	2183.00	2208.00	2209.00	2160.00	2183.00	2208.00
<b>Train 2</b>								
Planned unavailable hours	55.35	17.97	31.27	27.13	13.76	42.40	32.51	30.70
Unplanned unavailable hours	0	2.60	0	0	0	9.69	0	0
Fault exposure hours	0	0	0	0	0	0.13	0	0
Effective Reset hours	0	0	0	0	0	0	0	0
Required hours	2209.00	2160.00	2183.00	2208.00	2209.00	2160.00	2183.00	2208.00
<b>Indicator value</b>	<b>1.4%</b>	<b>1.5%</b>	<b>1.5%</b>	<b>1.6%</b>	<b>1.6%</b>	<b>1.7%</b>	<b>1.7%</b>	<b>1.8%</b>

Licensee Comments: none

### Safety System Unavailability, High Pressure Injection System (HPSI)



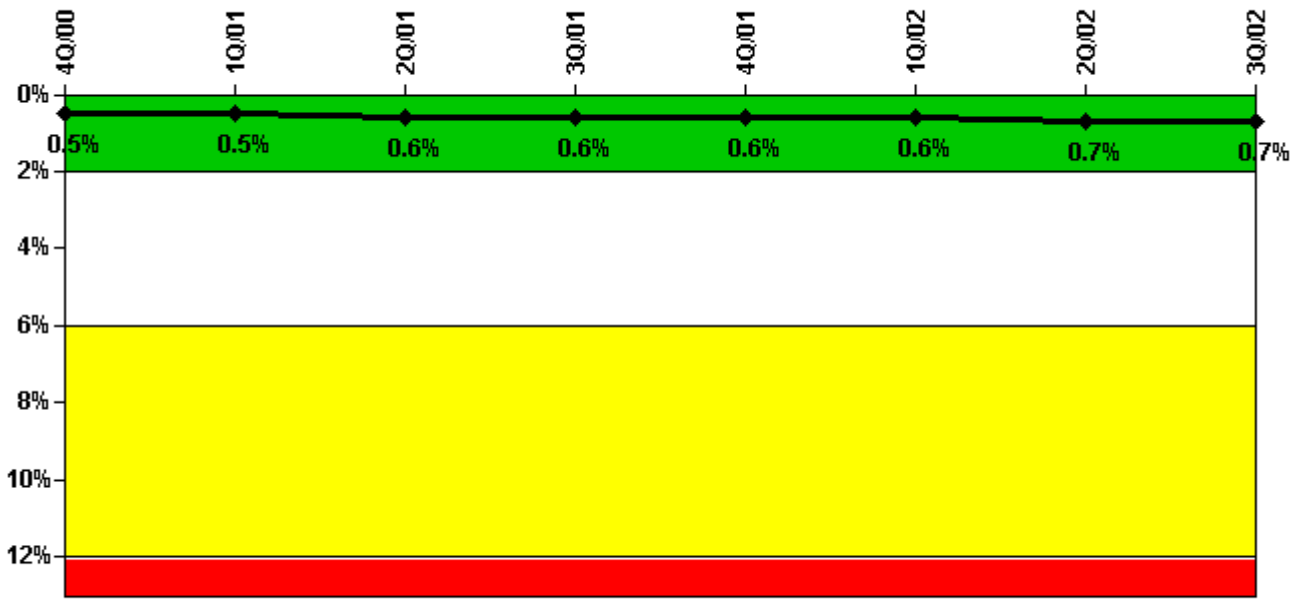
Thresholds: White > 1.5% Yellow > 5.0% Red > 10.0%

**Notes**

Safety System Unavailability, High Pressure Injection System (HPSI)	4Q/00	1Q/01	2Q/01	3Q/01	4Q/01	1Q/02	2Q/02	3Q/02
<b>Train 1</b>								
Planned unavailable hours	31.62	18.89	30.28	10.61	0	9.00	9.17	8.03
Unplanned unavailable hours	4.25	0	0	0	0	0	4.67	0
Fault exposure hours	0	0	0	0	0	0	0	0
Effective Reset hours	0	0	0	0	0	0	0	0
Required hours	2209.00	2160.00	2156.76	2040.17	778.00	2160.00	1951.76	2208.00
<b>Train 2</b>								
Planned unavailable hours	57.57	0.91	11.93	5.63	0	8.13	10.68	14.77
Unplanned unavailable hours	0	2.60	0	0	0	0	0	0
Fault exposure hours	0	0	0	0	0	0	0	0
Effective Reset hours	0	0	0	0	0	0	0	0
Required hours	2209.00	2160.00	2156.76	2040.17	778.00	2160.00	1951.76	2208.00
Indicator value	0.6%	0.7%	0.7%	0.8%	0.8%	0.8%	0.8%	0.9%

Licensee Comments: none

### Safety System Unavailability, Heat Removal System (AFW)



Thresholds: White > 2.0% Yellow > 6.0% Red > 12.0%

#### Notes

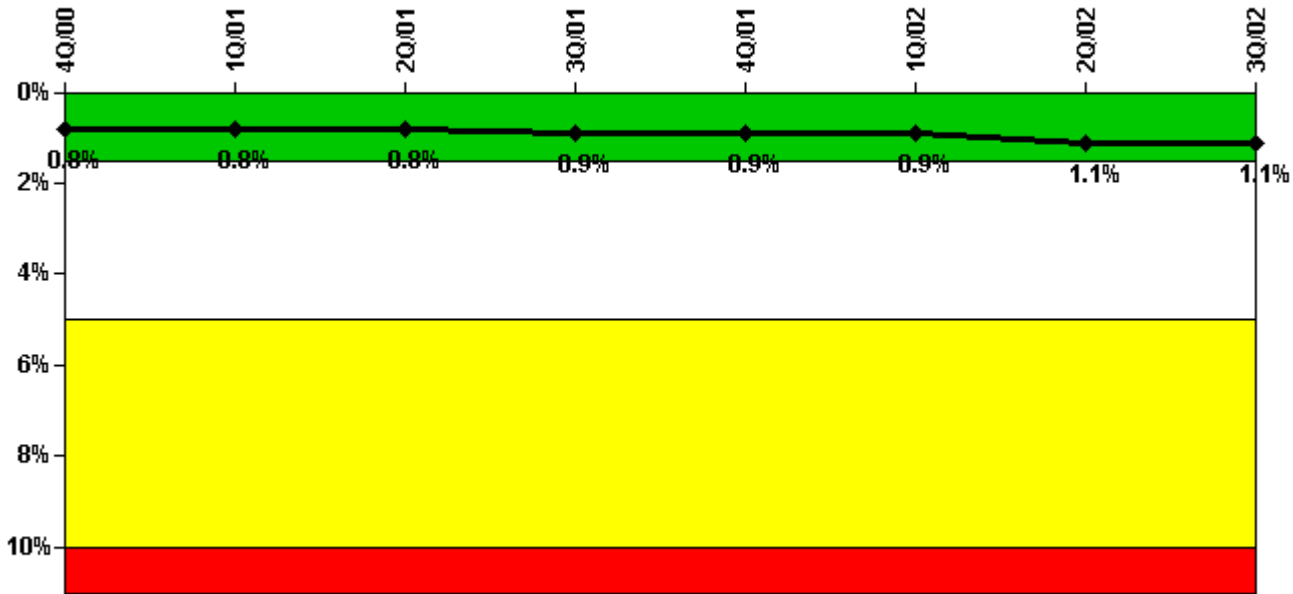
Safety System Unavailability, Heat Removal System (AFW)	4Q/00	1Q/01	2Q/01	3Q/01	4Q/01	1Q/02	2Q/02	3Q/02
<b>Train 1</b>								
Planned unavailable hours	16.55	10.07	30.33	1.39	0.35	11.17	26.25	3.10
Unplanned unavailable hours	0	0	0.30	0	0	0	4.67	0.79
Fault exposure hours	0	0	0	0	0	0	0	0
Effective Reset hours	0	0	0	0	0	0	0	0
Required hours	2209.00	2160.00	2156.76	2076.00	812.10	2160.00	1967.27	2208.00
<b>Train 2</b>								
Planned unavailable hours	39.62	1.09	10.72	2.22	0.25	9.36	11.42	7.83
Unplanned unavailable hours	0	2.60	15.35	0	0.27	0	0	0.39
Fault exposure hours	0	0	17.93	0	0	0	0	0
Effective Reset hours	0	0	0	0	0	0	0	0
Required hours	2209.00	2160.00	2156.76	2076.00	812.10	2160.00	1967.27	2208.00
<b>Train 3</b>								
Planned unavailable hours	2.84	3.46	3.20	2.90	3.46	8.22	4.68	4.18
Unplanned unavailable hours	0	3.92	3.88	0	12.52	0	0	1.75
Fault exposure hours	0	0	0	0	0	0	0	0
Effective Reset hours	0	0	0	0	0	0	0	0
Required hours	2209.00	2160.00	2156.76	2076.00	812.10	2160.00	1967.27	2208.00
<b>Indicator value</b>	<b>0.5%</b>	<b>0.5%</b>	<b>0.6%</b>	<b>0.6%</b>	<b>0.6%</b>	<b>0.6%</b>	<b>0.7%</b>	<b>0.7%</b>

Licensee Comments:

4Q/01: A review of records identified an additional 12.27 hours of unplanned unavailability for the Turbine Driven AFW pump (Train 3) in the fourth quarter of 2001. In addition, 0.27 hours of unavailability for the motor driven AFW pump B (Train 2) was changed from planned to unplanned for the fourth quarter of 2001 and 0.25 hours of unavailability for the turbine driven AFW pump (Train 3) was changed from planned to unplanned for the fourth quarter of 2001. The changes had an insignificant affect on the value of the indicator, the indicator color remains

Green.

### Safety System Unavailability, Residual Heat Removal System



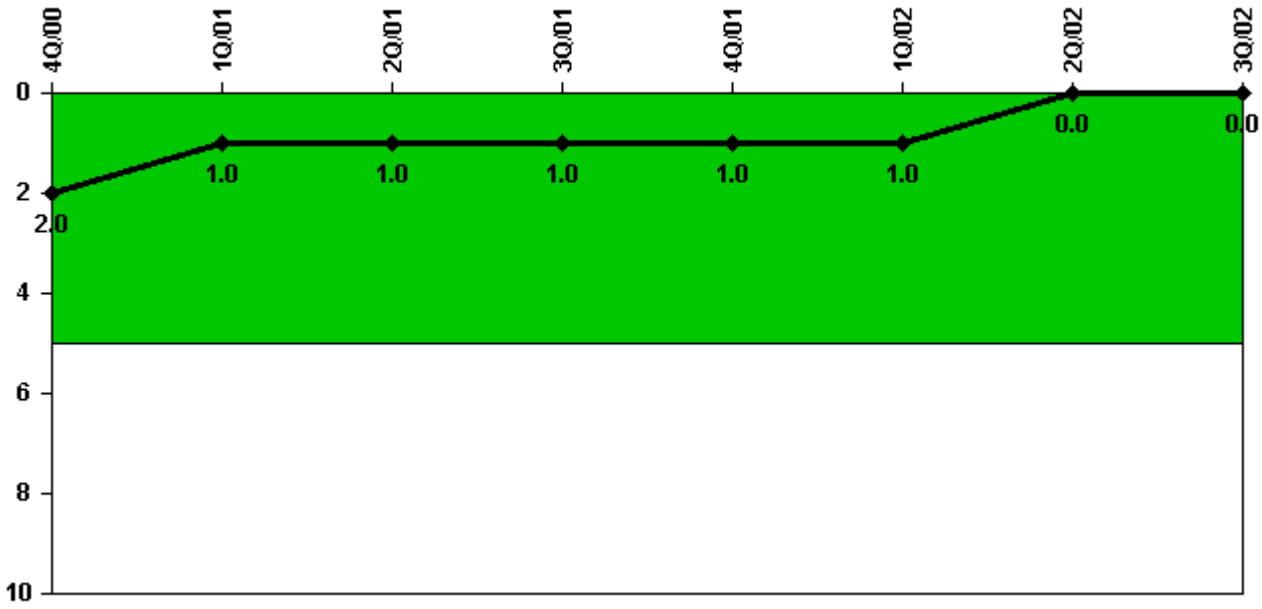
Thresholds: White > 1.5% Yellow > 5.0% Red > 10.0%

#### Notes

Safety System Unavailability, Residual Heat Removal System	4Q/00	1Q/01	2Q/01	3Q/01	4Q/01	1Q/02	2Q/02	3Q/02
<b>Train 1</b>								
Planned unavailable hours	31.99	24.15	28.66	3.98	0.66	18.09	14.67	9.98
Unplanned unavailable hours	4.25	0	0	0	0	3.90	71.93	0
Fault exposure hours	0	0	0	0	0	0	0	0
Effective Reset hours	0	0	0	0	0	0	0	0
Required hours	2209.00	2160.00	2183.00	2208.00	2209.00	2160.00	2183.00	2208.00
<b>Train 2</b>								
Planned unavailable hours	57.65	0.90	9.75	11.99	0.55	11.69	23.62	11.44
Unplanned unavailable hours	0	2.60	0	0	0	7.62	0	0
Fault exposure hours	0	0	0	0	0	0	0	0
Effective Reset hours	0	0	0	0	0	0	0	0
Required hours	2209.00	2160.00	2183.00	2208.00	2209.00	2160.00	2183.00	2208.00
Indicator value	0.8%	0.8%	0.8%	0.9%	0.9%	0.9%	1.1%	1.1%

Licensee Comments: none

### Safety System Functional Failures (PWR)



Thresholds: White > 5.0

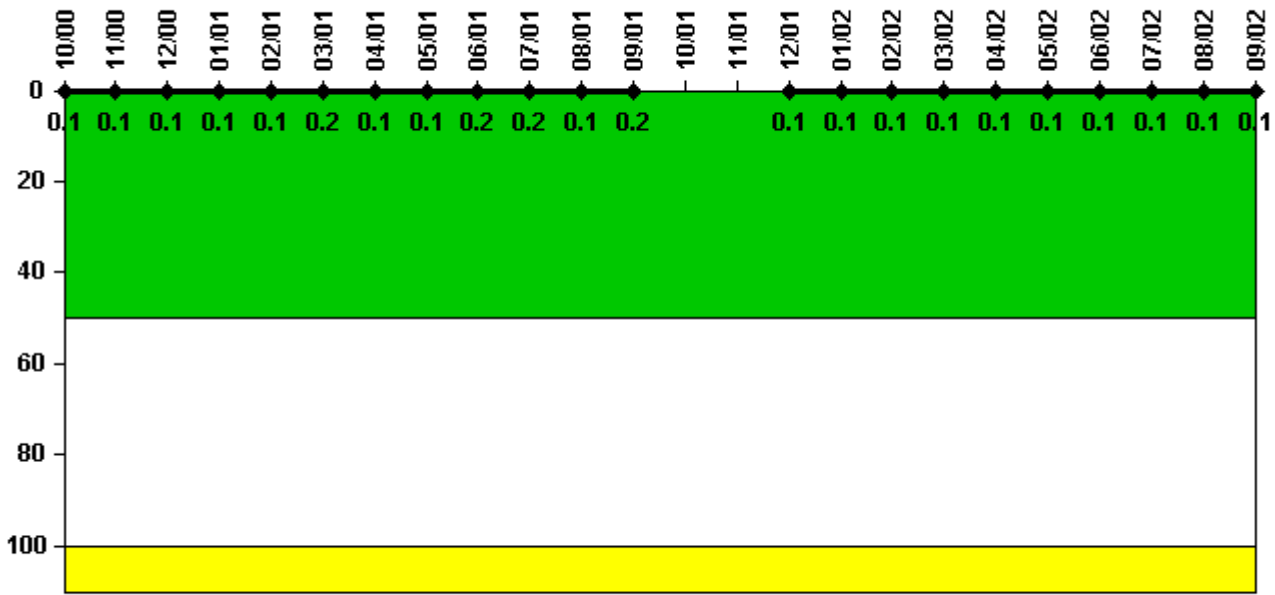
#### Notes

Safety System Functional Failures (PWR)	4Q/00	1Q/01	2Q/01	3Q/01	4Q/01	1Q/02	2Q/02	3Q/02
Safety System Functional Failures	0	0	1	0	0	0	0	0
Indicator value	2	1	1	1	1	1	0	0

Licensee Comments: none



### Reactor Coolant System Activity



Thresholds: White > 50.0 Yellow > 100.0

#### Notes

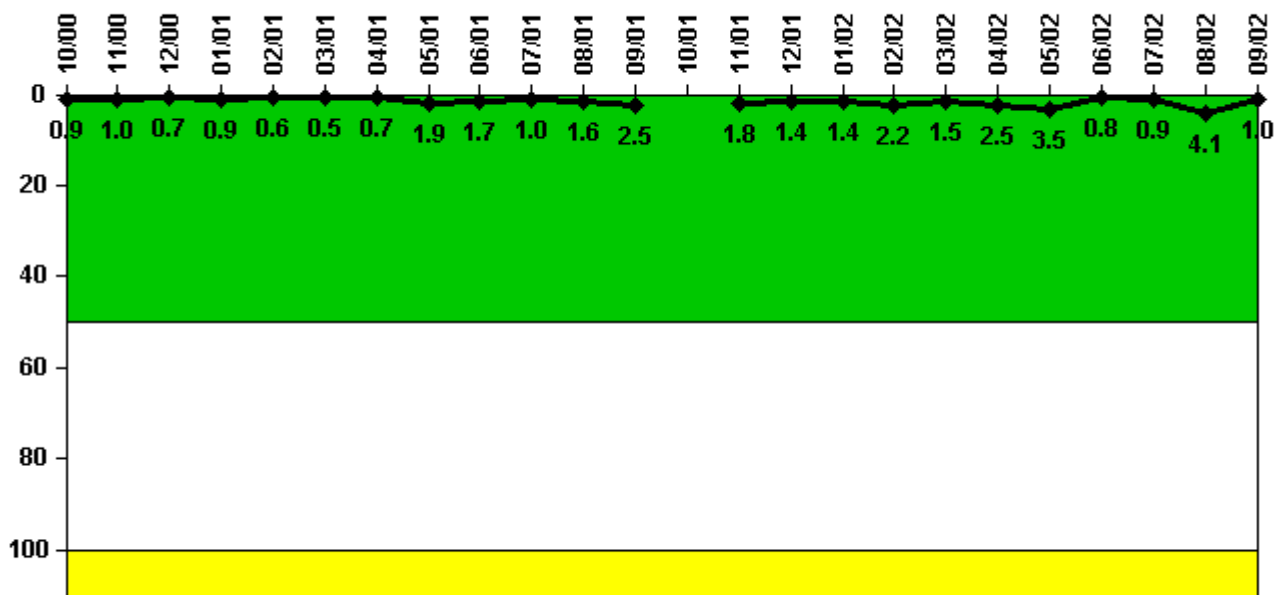
Reactor Coolant System Activity	10/00	11/00	12/00	1/01	2/01	3/01	4/01	5/01	6/01	7/01	8/01	9/01
Maximum activity	0.000247	0.000248	0.000253	0.000260	0.000270	0.000320	0.000286	0.000282	0.000310	0.000301	0.000295	0.000317
Technical specification limit	0.2	0.2	0.2	0.2	0.2	0.2	0.2	0.2	0.2	0.2	0.2	0.2
Indicator value	0.1	0.1	0.1	0.1	0.1	0.2	0.1	0.1	0.2	0.2	0.1	0.2

Reactor Coolant System Activity	10/01	11/01	12/01	1/02	2/02	3/02	4/02	5/02	6/02	7/02	8/02	9/02
Maximum activity	N/A	N/A	0.000203	0.000215	0.000224	0.000215	0.000247	0.000236	0.000248	0.000260	0.000272	0.000248
Technical specification limit	0.2	0.2	0.2	0.2	0.2	0.2	0.2	0.2	0.2	0.2	0.2	0.2
Indicator value	N/A	N/A	0.1	0.1	0.1	0.1	0.1	0.1	0.1	0.1	0.1	0.1

Licensee Comments: none

### Reactor Coolant System Leakage



Thresholds: White > 50.0 Yellow > 100.0

#### Notes

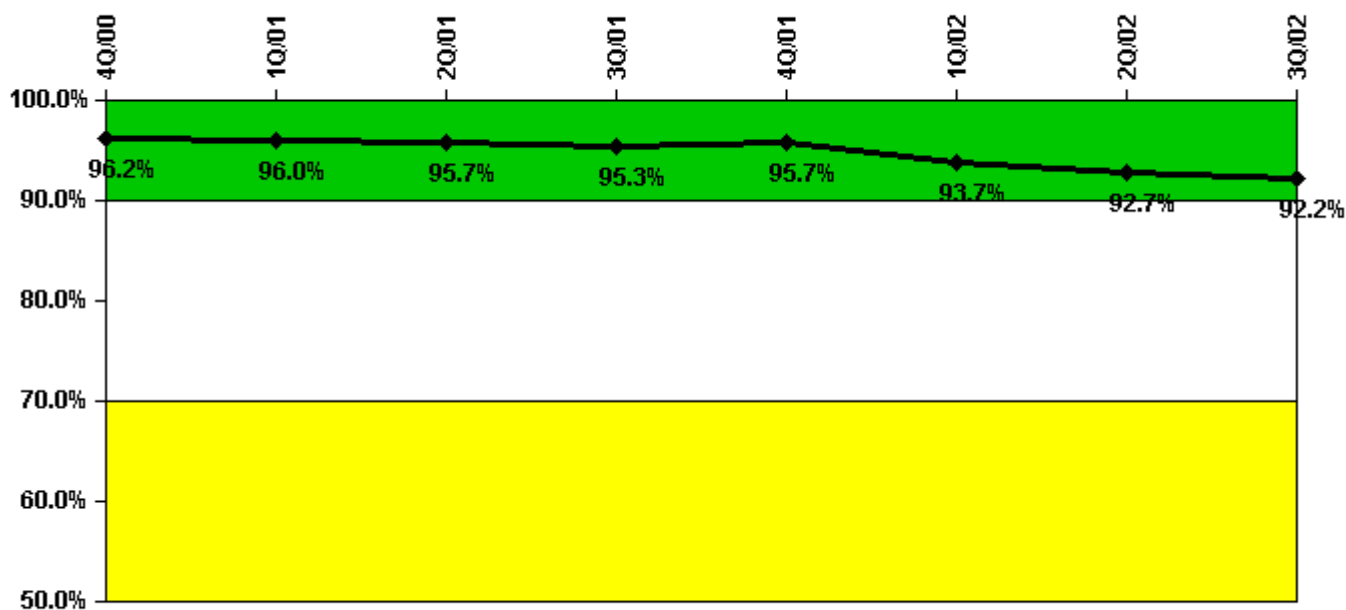
Reactor Coolant System Leakage	10/00	11/00	12/00	1/01	2/01	3/01	4/01	5/01	6/01	7/01	8/01	9/01
Maximum leakage	0.090	0.102	0.072	0.088	0.062	0.054	0.070	0.193	0.173	0.097	0.156	0.248
Technical specification limit	10.0	10.0	10.0	10.0	10.0	10.0	10.0	10.0	10.0	10.0	10.0	10.0
Indicator value	0.9	1.0	0.7	0.9	0.6	0.5	0.7	1.9	1.7	1.0	1.6	2.5

Reactor Coolant System Leakage	10/01	11/01	12/01	1/02	2/02	3/02	4/02	5/02	6/02	7/02	8/02	9/02
Maximum leakage	N/A	0.181	0.141	0.141	0.220	0.152	0.251	0.348	0.083	0.087	0.410	0.098
Technical specification limit	10.0	10.0	10.0	10.0	10.0	10.0	10.0	10.0	10.0	10.0	10.0	10.0
Indicator value	N/A	1.8	1.4	1.4	2.2	1.5	2.5	3.5	0.8	0.9	4.1	1.0

Licensee Comments: none

### Drill/Exercise Performance



Thresholds: White < 90.0% Yellow < 70.0%

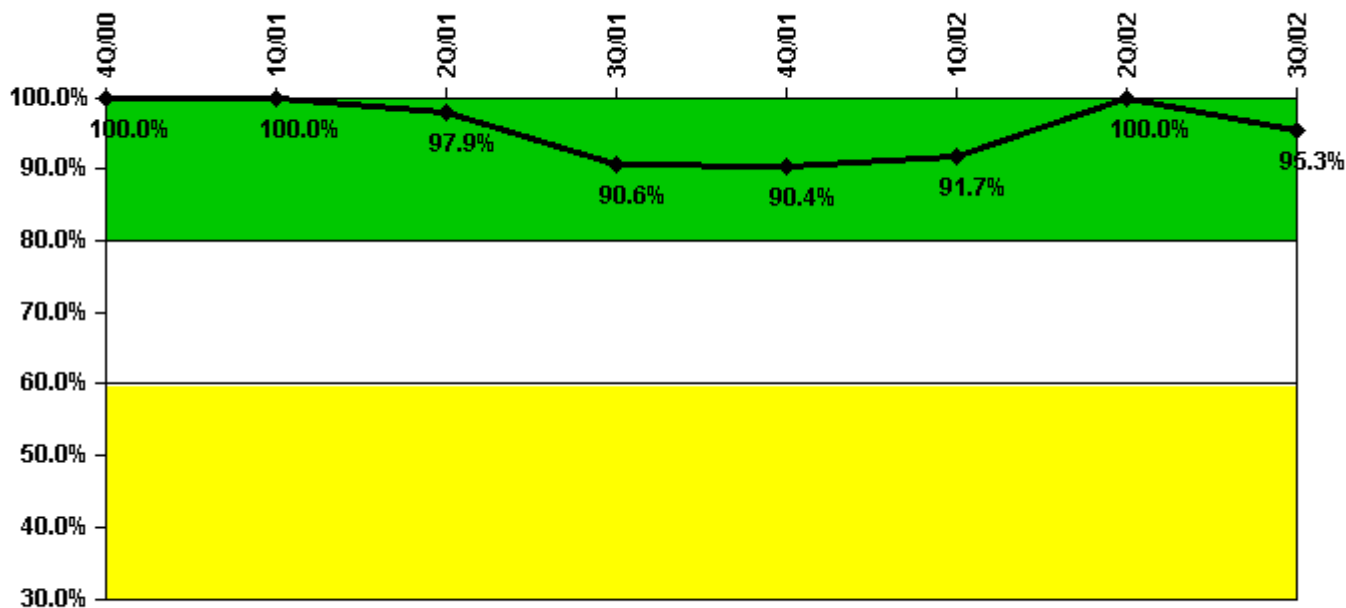
#### Notes

Drill/Exercise Performance	4Q/00	1Q/01	2Q/01	3Q/01	4Q/01	1Q/02	2Q/02	3Q/02
Successful opportunities	2.0	25.0	56.0	8.0	0	5.0	5.0	6.0
Total opportunities	2.0	26.0	58.0	11.0	0	6.0	6.0	7.0
Indicator value	96.2%	96.0%	95.7%	95.3%	95.7%	93.7%	92.7%	92.2%

Licensee Comments:

1Q/02: The data has been revised for the first quarter of 2002 to reflect that one opportunity that had been previously counted as having a successful outcome will now be counted as unsuccessful. This reduced the overall value of the indicator, but the color remains Green.

### ERO Drill Participation



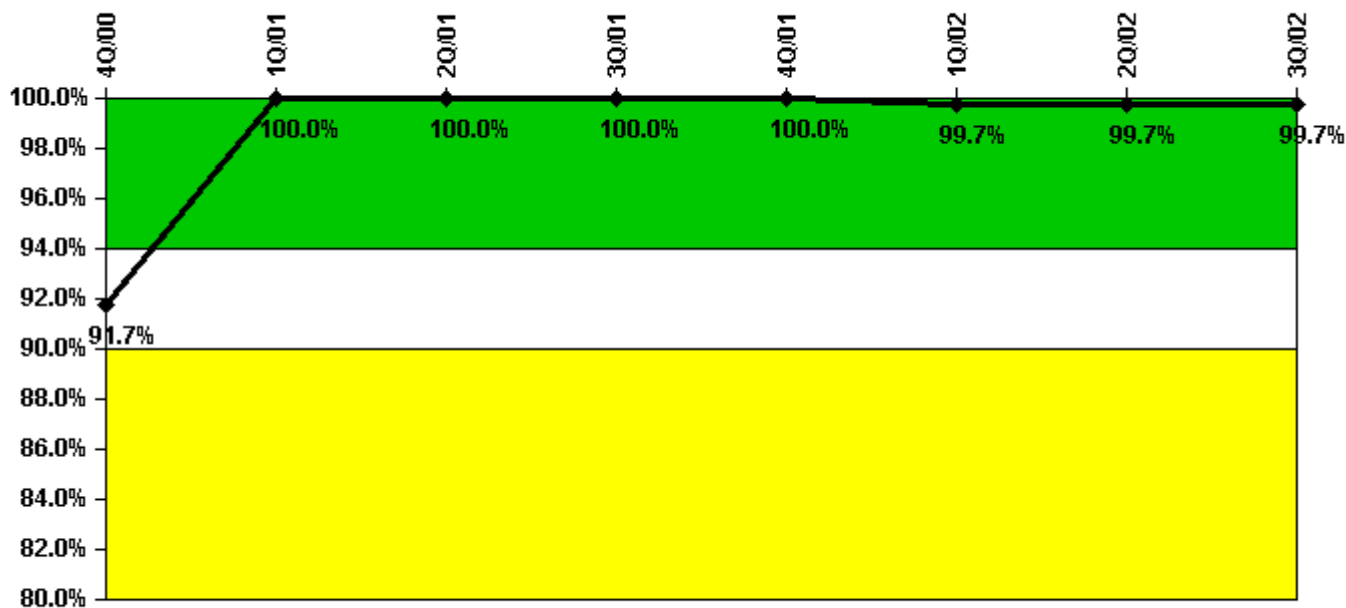
Thresholds: White < 80.0% Yellow < 60.0%

#### Notes

ERO Drill Participation	4Q/00	1Q/01	2Q/01	3Q/01	4Q/01	1Q/02	2Q/02	3Q/02
Participating Key personnel	40.0	39.0	47.0	48.0	47.0	44.0	43.0	41.0
Total Key personnel	40.0	39.0	48.0	53.0	52.0	48.0	43.0	43.0
Indicator value	100.0%	100.0%	97.9%	90.6%	90.4%	91.7%	100.0%	95.3%

Licensee Comments: none

### Alert & Notification System



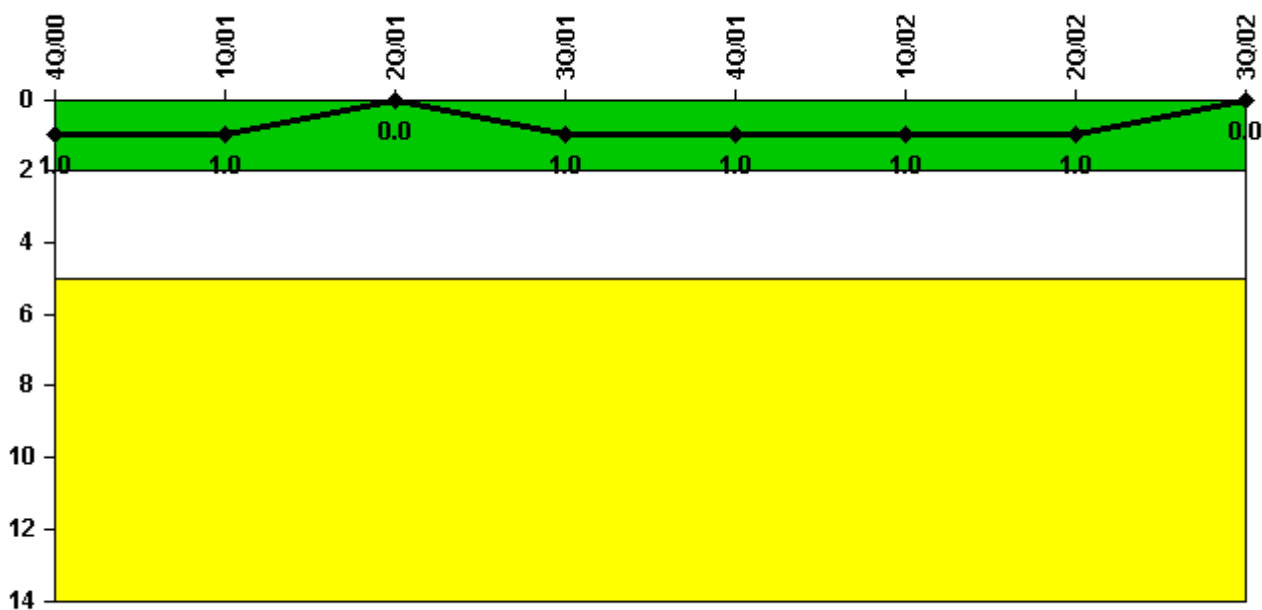
Thresholds: White < 94.0% Yellow < 90.0%

#### Notes

Alert & Notification System	4Q/00	1Q/01	2Q/01	3Q/01	4Q/01	1Q/02	2Q/02	3Q/02
Successful siren-tests	78	78	78	78	78	77	78	78
Total sirens-tests	78	78	78	78	78	78	78	78
Indicator value	91.7%	100.0%	100.0%	100.0%	100.0%	99.7%	99.7%	99.7%

Licensee Comments: none

### Occupational Exposure Control Effectiveness



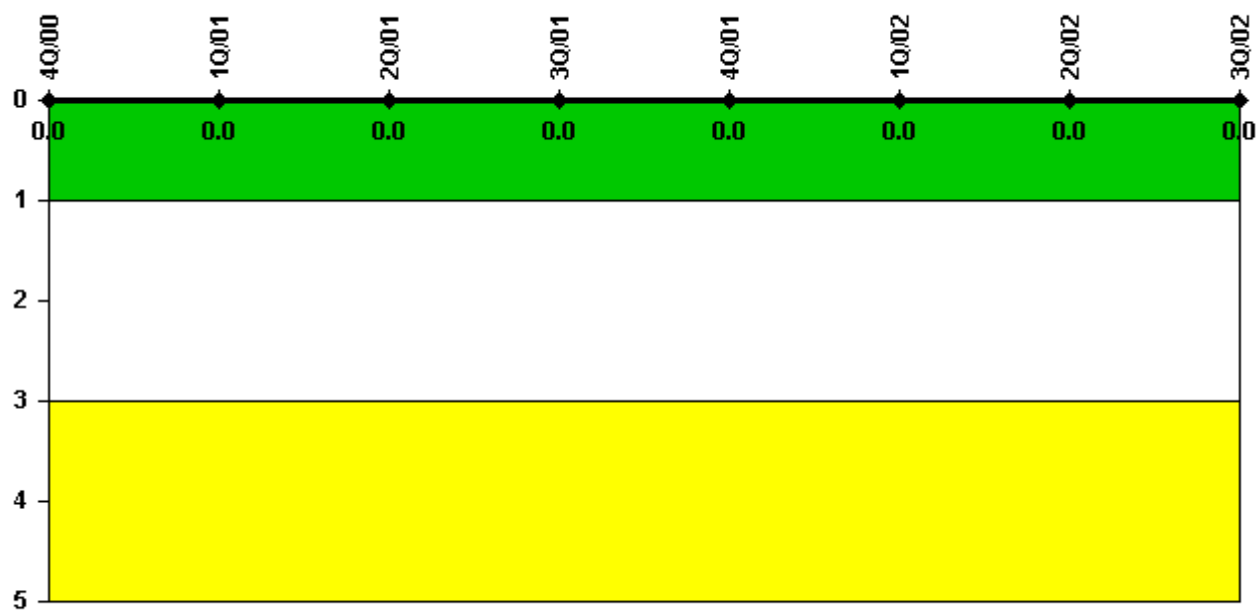
Thresholds: White > 2.0 Yellow > 5.0

#### Notes

Occupational Exposure Control Effectiveness	4Q/00	1Q/01	2Q/01	3Q/01	4Q/01	1Q/02	2Q/02	3Q/02
High radiation area occurrences	0	0	0	1	0	0	0	0
Very high radiation area occurrences	0	0	0	0	0	0	0	0
Unintended exposure occurrences	0	0	0	0	0	0	0	0
Indicator value	1	1	0	1	1	1	1	0

Licensee Comments: none

### RETS/ODCM Radiological Effluent



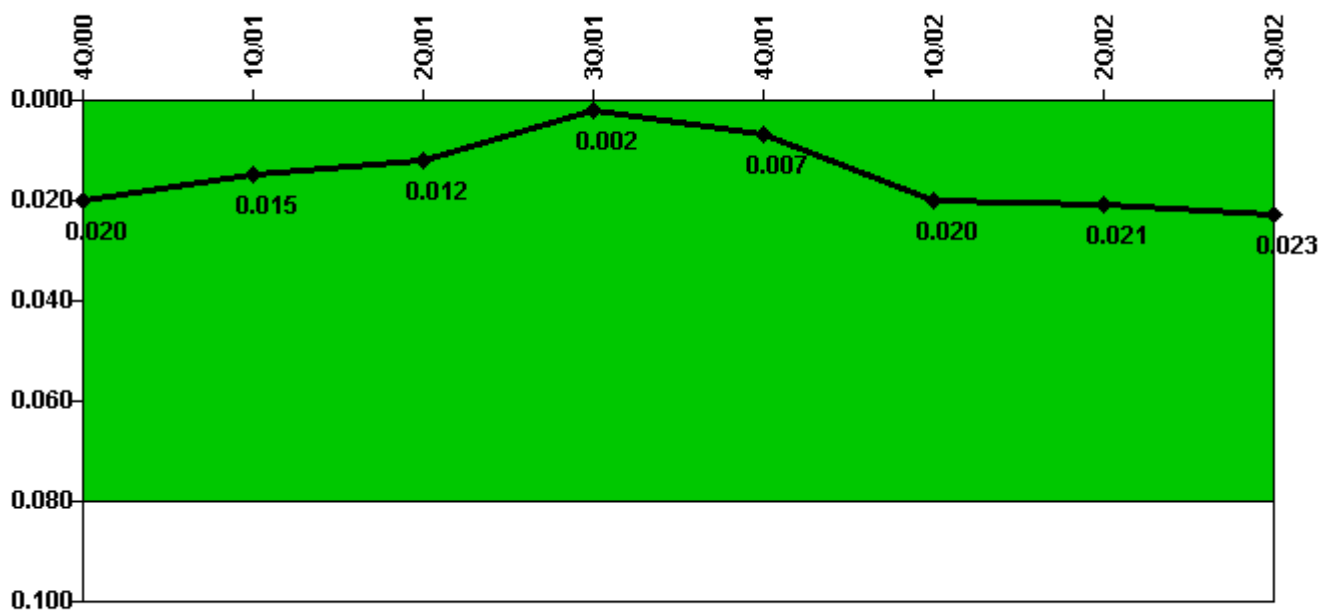
Thresholds: White > 1.0 Yellow > 3.0

#### Notes

RETS/ODCM Radiological Effluent	4Q/00	1Q/01	2Q/01	3Q/01	4Q/01	1Q/02	2Q/02	3Q/02
RETS/ODCM occurrences	0	0	0	0	0	0	0	0
Indicator value	0	0	0	0	0	0	0	0

Licensee Comments: none

### Protected Area Security Performance Index



Thresholds: White > 0.080

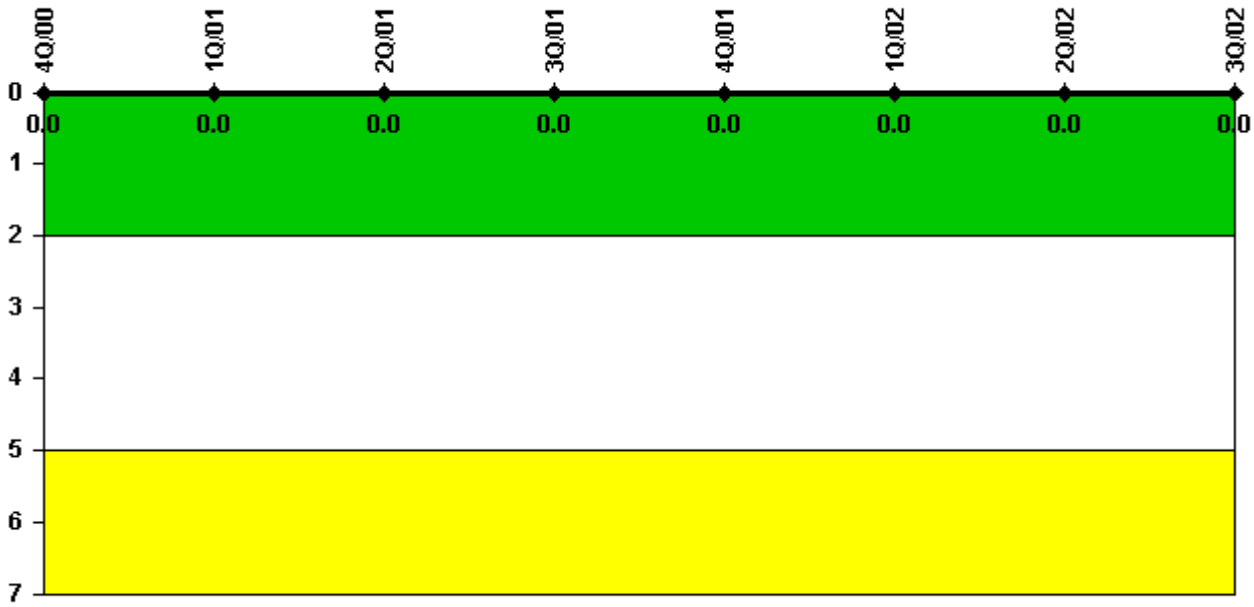
#### Notes

Protected Area Security Performance Index	4Q/00	1Q/01	2Q/01	3Q/01	4Q/01	1Q/02	2Q/02	3Q/02
IDS compensatory hours	0	0.50	9.70	1.70	113.70	227.80	19.20	41.90
CCTV compensatory hours	16.5	0	0	0	0	0	0	0
IDS normalization factor	1.00	1.00	1.00	1.00	1.00	1.00	1.00	1.00
CCTV normalization factor	1.0	1.0	1.0	1.0	1.0	1.0	1.0	1.0
Index Value	0.020	0.015	0.012	0.002	0.007	0.020	0.021	0.023

Licensee Comments: none



### Personnel Screening Program



Thresholds: White > 2.0 Yellow > 5.0

#### Notes

Personnel Screening Program	4Q/00	1Q/01	2Q/01	3Q/01	4Q/01	1Q/02	2Q/02	3Q/02
Program failures	0	0	0	0	0	0	0	0
Indicator value	0	0	0	0	0	0	0	0

Licensee Comments: none

### FFD/Personnel Reliability



Thresholds: White > 2.0 Yellow > 5.0

#### Notes

FFD/Personnel Reliability	4Q/00	1Q/01	2Q/01	3Q/01	4Q/01	1Q/02	2Q/02	3Q/02
Program Failures	0	0	0	0	0	0	0	0
Indicator value	0	0	0	0	0	0	0	0

Licensee Comments: none

▲ [PI Summary](#) | [Inspection Findings Summary](#) | [Reactor Oversight Process](#)

Last Modified: October 22, 2002