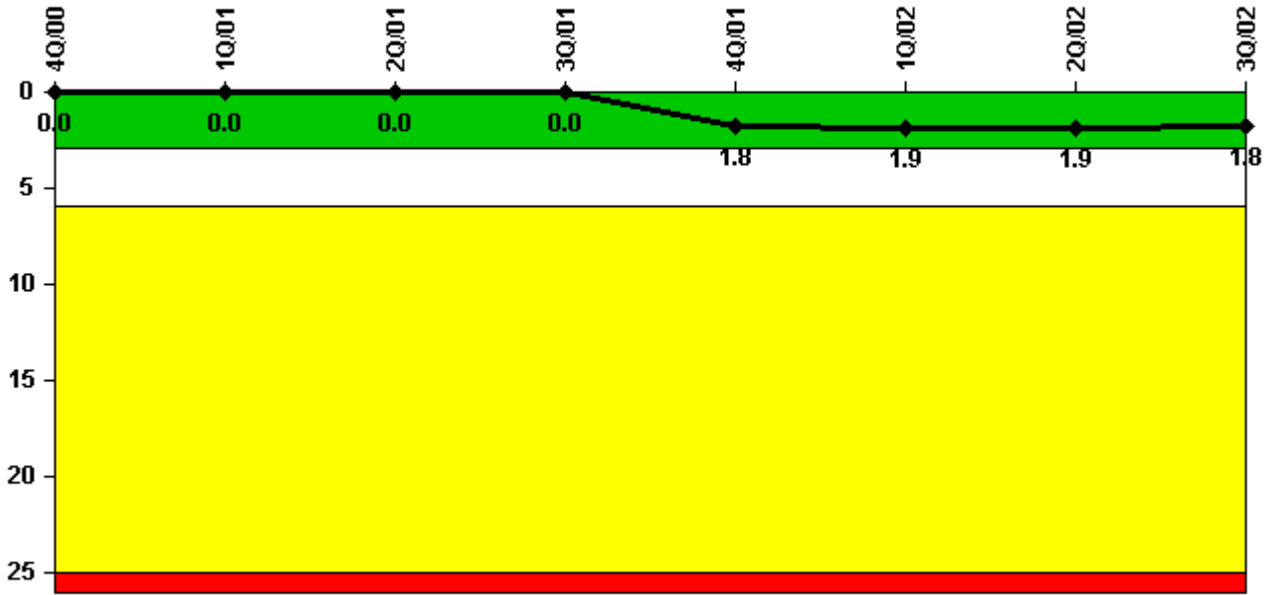


## Hatch 2

### 3Q/2002 Performance Indicators

Licensee's General Comments: none

#### Unplanned Scrams per 7000 Critical Hrs



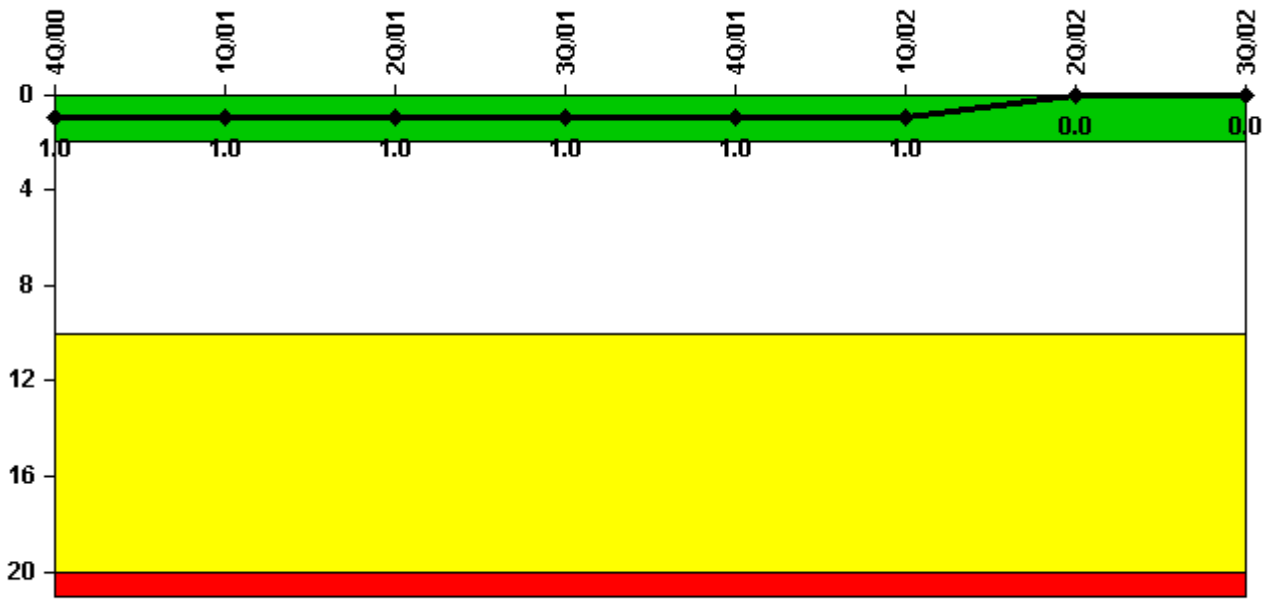
**Thresholds: White > 3.0 Yellow > 6.0 Red > 25.0**

#### Notes

Unplanned Scrams per 7000 Critical Hrs	4Q/00	1Q/01	2Q/01	3Q/01	4Q/01	1Q/02	2Q/02	3Q/02
Unplanned scrams	0	0	0	0	2.0	0	0	0
Critical hours	2209.0	2160.0	2183.0	1824.8	1503.1	1964.6	2183.0	2208.0
Indicator value	0	0	0	0	1.8	1.9	1.9	1.8

Licensee Comments: none

### Scrams with Loss of Normal Heat Removal



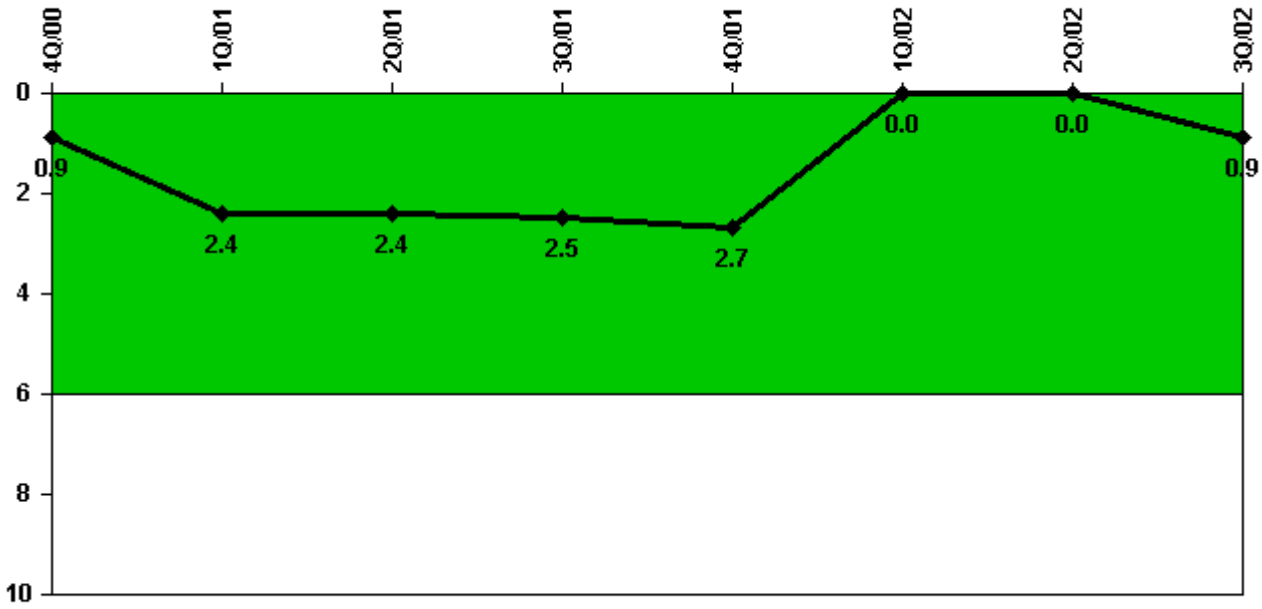
Thresholds: White > 2.0 Yellow > 10.0 Red > 20.0

#### Notes

Scrams with Loss of Normal Heat Removal	4Q/00	1Q/01	2Q/01	3Q/01	4Q/01	1Q/02	2Q/02	3Q/02
Scrams	0	0	0	0	0	0	0	0
Indicator value	1.0	1.0	1.0	1.0	1.0	1.0	0	0

Licensee Comments: none

### Unplanned Power Changes per 7000 Critical Hrs



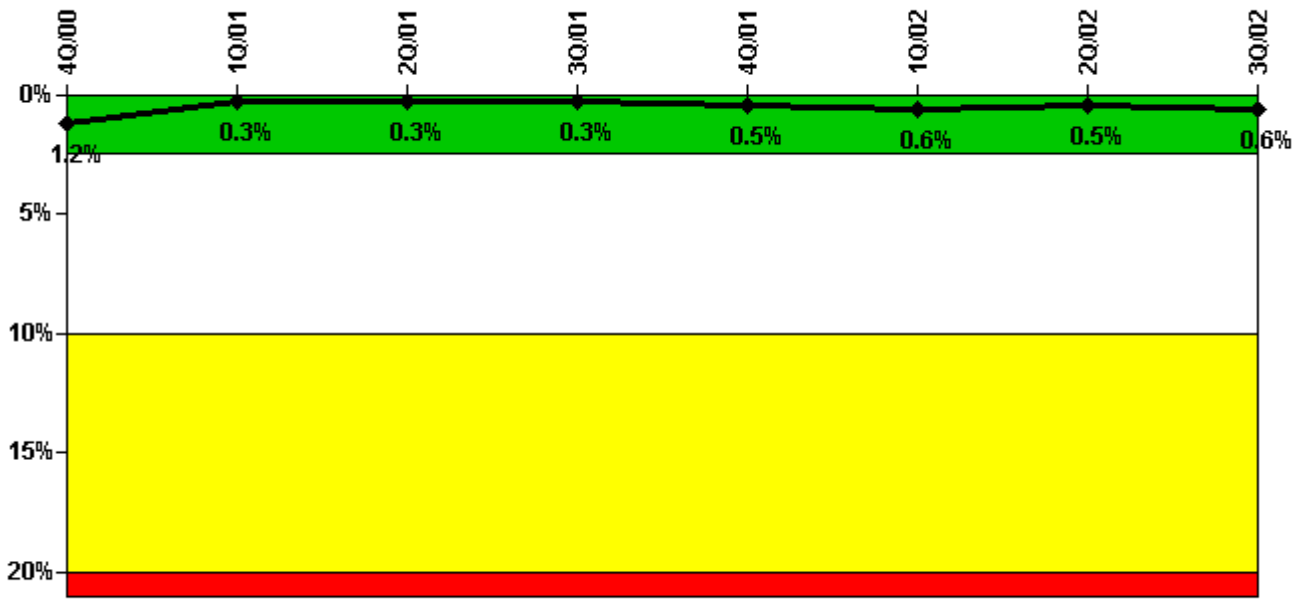
Thresholds: White > 6.0

#### Notes

Unplanned Power Changes per 7000 Critical Hrs	4Q/00	1Q/01	2Q/01	3Q/01	4Q/01	1Q/02	2Q/02	3Q/02
Unplanned power changes	0	3.0	0	0	0	0	0	1.0
Critical hours	2209.0	2160.0	2183.0	1824.8	1503.1	1964.6	2183.0	2208.0
Indicator value	0.9	2.4	2.4	2.5	2.7	0	0	0.9

Licensee Comments: none

### Safety System Unavailability, Emergency AC Power, >2EDG



Thresholds: White > 2.5% Yellow > 10.0% Red > 20.0%

#### Notes

Safety System Unavailability, Emergency AC Power, >2EDG	4Q/00	1Q/01	2Q/01	3Q/01	4Q/01	1Q/02	2Q/02	3Q/02
<b>Train 1</b>								
Planned unavailable hours	0.10	0	0.17	0	0	0.08	0	0
Unplanned unavailable hours	0	0.05	0	0	0	0	0	0
Fault exposure hours	0	0	0	0	0	0	0	0
Effective Reset hours	0	0	0	0	0	0	0	0
Required hours	2209.00	2160.00	2183.00	2208.00	2209.00	2160.00	2183.00	2208.00
<b>Train 2</b>								
Planned unavailable hours	0.07	0	0.18	0	0	0.08	0	56.82
Unplanned unavailable hours	0	0	0	0	0	0	0	0
Fault exposure hours	0	0	0	0	0	0	0	0
Effective Reset hours	0	0	0	0	0	0	0	0
Required hours	2209.00	2160.00	2183.00	2208.00	2209.00	2160.00	2183.00	2208.00
<b>Train 3</b>								
Planned unavailable hours	15.38	2.05	1.97	4.00	0	174.63	4.33	0
Unplanned unavailable hours	0	0	0	0	138.42	0	0	0
Fault exposure hours	0	0	0	0	0	0	0	0
Effective Reset hours	0	0	0	0	0	0	0	0
Required hours	2209.00	2160.00	2183.00	2208.00	2209.00	2160.00	2183.00	2208.00
Indicator value	1.2%	0.3%	0.3%	0.3%	0.5%	0.6%	0.5%	0.6%

Licensee Comments: none

### Safety System Unavailability, High Pressure Injection System (HPCI)



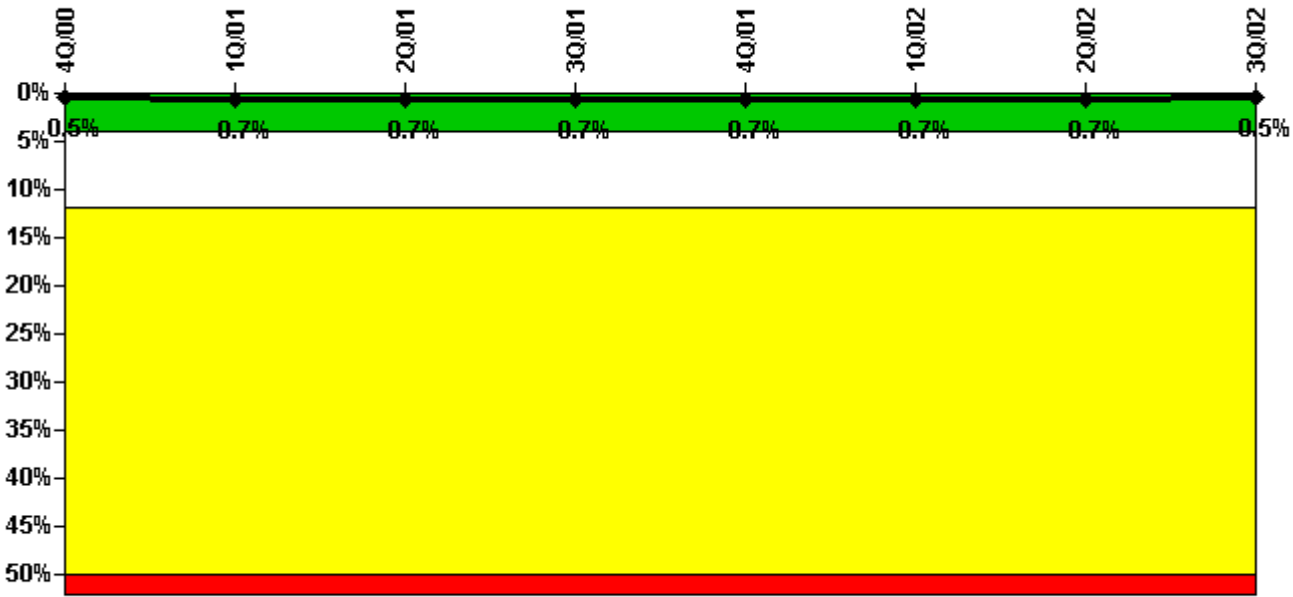
Thresholds: White > 4.0% Yellow > 12.0% Red > 50.0%

#### Notes

Safety System Unavailability, High Pressure Injection System (HPCI)	4Q/00	1Q/01	2Q/01	3Q/01	4Q/01	1Q/02	2Q/02	3Q/02
Train 1								
Planned unavailable hours	0	0	43.58	0	6.52	5.58	0	0
Unplanned unavailable hours	0	0	0	0	0	0	0	0
Fault exposure hours	0	0	0	0	0	0	0	0
Effective Reset hours	0	0	0	0	0	0	0	0
Required hours	2209.00	2160.00	2183.00	1824.77	1503.09	1964.57	2183.00	2208.00
Indicator value	0.6%	0.6%	0.6%	0.6%	0.6%	0.6%	0.6%	0.6%

Licensee Comments: none

### Safety System Unavailability, Heat Removal System (RCIC)



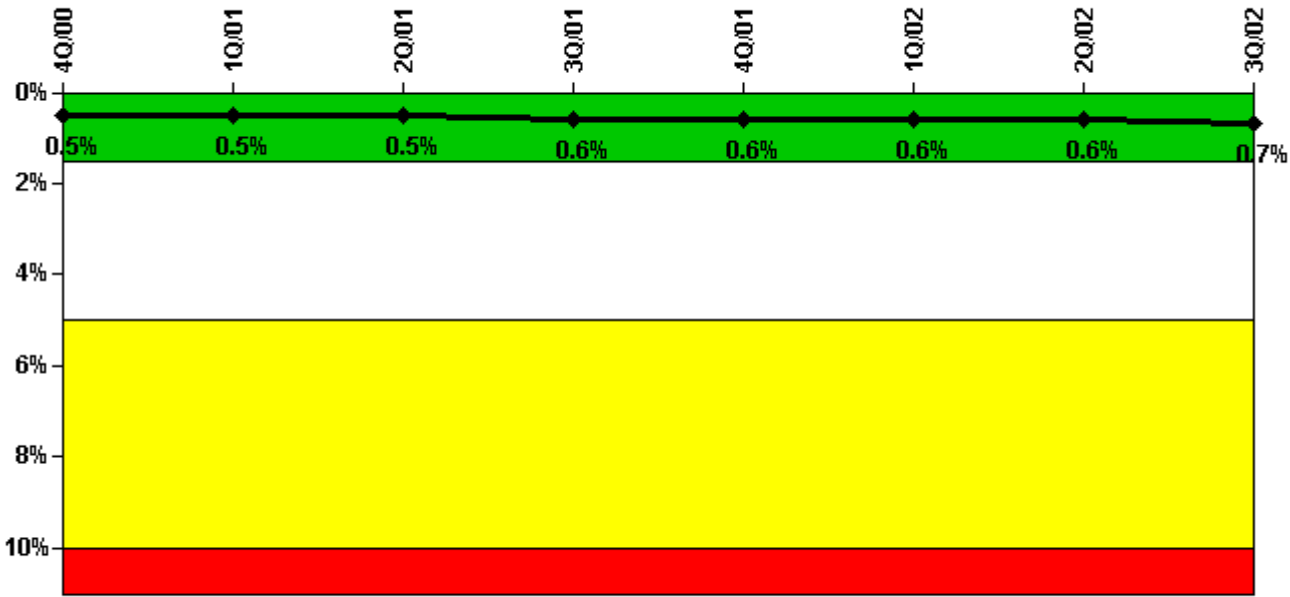
Thresholds: White > 4.0% Yellow > 12.0% Red > 50.0%

#### Notes

Safety System Unavailability, Heat Removal System (RCIC)	4Q/00	1Q/01	2Q/01	3Q/01	4Q/01	1Q/02	2Q/02	3Q/02
Train 1								
Planned unavailable hours	1.17	37.83	4.07	0.48	0.75	21.85	9.55	1.12
Unplanned unavailable hours	0	34.95	0	0	0	0	0	0
Fault exposure hours	0	0	0	0	0	0	0	0
Effective Reset hours	0	0	0	0	0	0	0	0
Required hours	2209.00	2160.00	2183.00	1824.77	1503.09	1964.57	2183.00	2208.00
Indicator value	0.5%	0.7%	0.7%	0.7%	0.7%	0.7%	0.7%	0.5%

Licensee Comments: none

### Safety System Unavailability, Residual Heat Removal System



Thresholds: White > 1.5% Yellow > 5.0% Red > 10.0%

#### Notes

Safety System Unavailability, Residual Heat Removal System	4Q/00	1Q/01	2Q/01	3Q/01	4Q/01	1Q/02	2Q/02	3Q/02
<b>Train 1</b>								
Planned unavailable hours	0	0	0	51.73	22.43	0	0	0
Unplanned unavailable hours	0	0.05	0	0	0	0	0	0
Fault exposure hours	0	0	0	0	0	0	0	0
Effective Reset hours	0	0	0	0	0	0	0	0
Required hours	2209.00	2160.00	2183.00	2208.00	2209.00	2160.00	2183.00	2208.00
<b>Train 2</b>								
Planned unavailable hours	0	0	25.82	5.02	5.37	0	0	69.50
Unplanned unavailable hours	0	0	0	0	0	20.25	0	0
Fault exposure hours	0	0	0	0	0	0	0	0
Effective Reset hours	0	0	0	0	0	0	0	0
Required hours	2209.00	2160.00	2183.00	2208.00	2209.00	2160.00	2183.00	2208.00
<b>Indicator value</b>	<b>0.5%</b>	<b>0.5%</b>	<b>0.5%</b>	<b>0.6%</b>	<b>0.6%</b>	<b>0.6%</b>	<b>0.6%</b>	<b>0.7%</b>

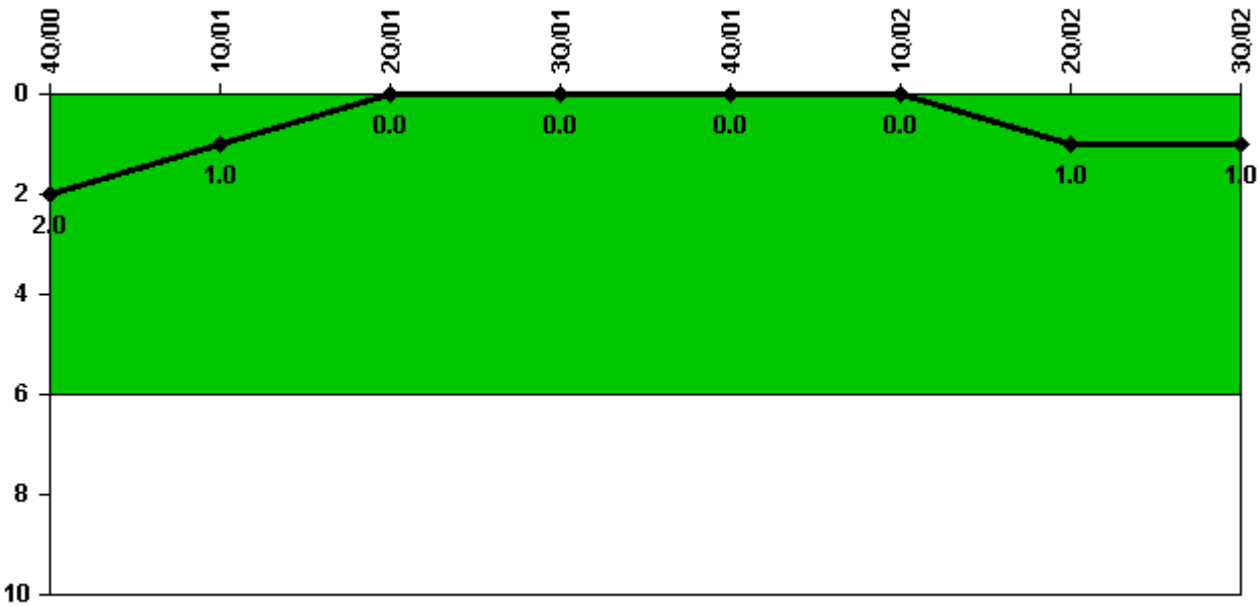
#### Licensee Comments:

3Q/02: Due to an engineering evaluation which concluded the removal of any one of the RHRSW pump motors would not create an overstressed condition during a seismic event, the following hours have been removed; 9/2000 (train 1) 32.833 planned hours, 4/2001 (train 2) 23.5 planned hours, and 5/2001 (train 2) 1.117 planned hours. This did not affect the color of the indicator.

2Q/01: Due to an engineering evaluation, which concluded the removal of any one of the RHRSW pump motors would not create an overstressed condition during a seismic event, the hours listed below were removed and data restored to the original value in the Q3/2002 submittal. There was no affect to the color of the indicator. 09/2000 (train 1), 32.833 planned unavailable hours, 04/2001 (train 2), 23.5 planned unavailable hours, and 05/2001 (train 2), 1.117 planned unavailable hours were added due to a design deficiency identified that makes 2 RHRSW pumps in the same division unavailable when the motor cooling water piping is disconnected from a single pump. This did not affect the color of the indicator.

3Q/00: Due to an engineering evaluation, which concluded the removal of any one of the RHRSW pump motors would not create an overstressed condition during a seismic event, the hours listed below were removed and data restored to the original value in the Q3/2002 submittal. There was no affect to the color of the indicator. 09/2000 (train 1), 32.833 planned unavailable hours, 04/2001 (train 2), 23.5 planned unavailable hours, and 05/2001 (train 2), 1.117 planned unavailable hours were added due to a design deficiency identified that makes 2 RHRSW pumps in the same division unavailable when the motor cooling water piping is disconnected from a single pump. This did not affect the color of the indicator.

### Safety System Functional Failures (BWR)



Thresholds: White > 6.0

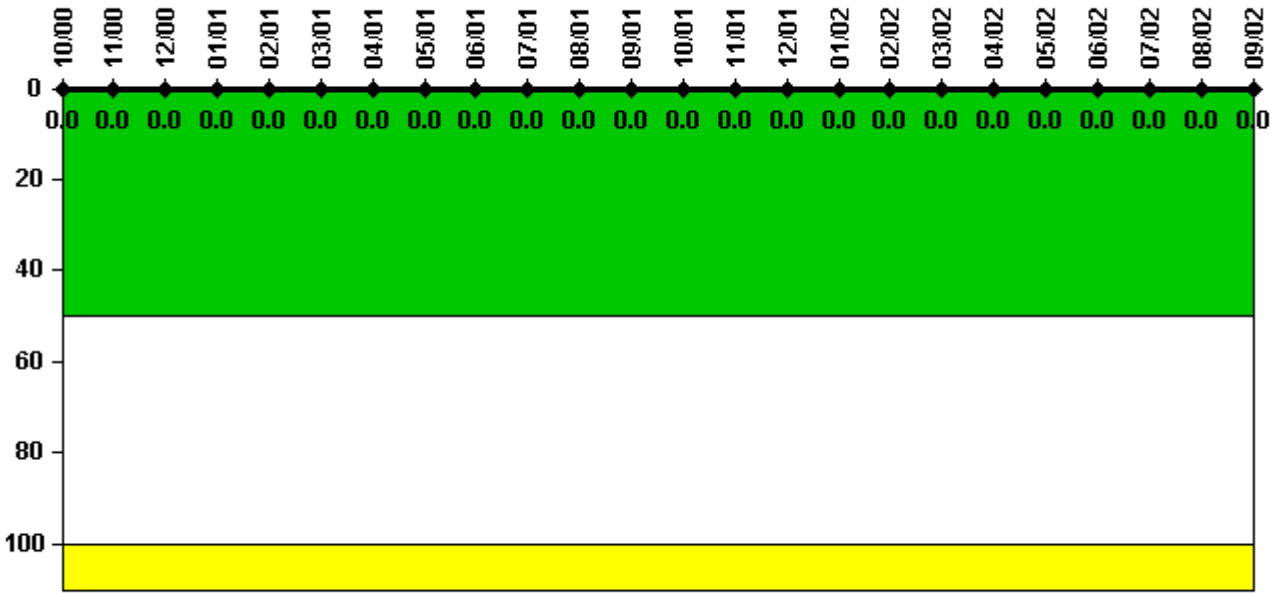
### Notes

Safety System Functional Failures (BWR)	4Q/00	1Q/01	2Q/01	3Q/01	4Q/01	1Q/02	2Q/02	3Q/02
Safety System Functional Failures	0	0	0	0	0	0	1	0
Indicator value	2	1	0	0	0	0	1	1

Licensee Comments: none



### Reactor Coolant System Activity



Thresholds: White > 50.0 Yellow > 100.0

#### Notes

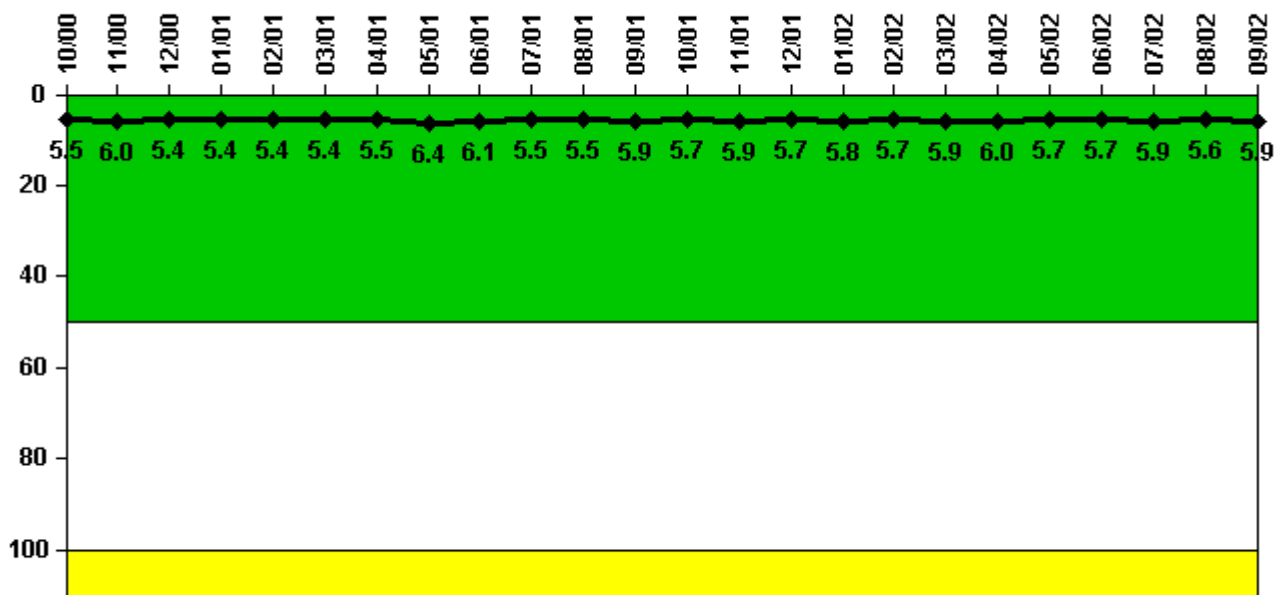
Reactor Coolant System Activity	10/00	11/00	12/00	1/01	2/01	3/01	4/01	5/01	6/01	7/01	8/01	9/01
Maximum activity	0.000010	0.000020	0.000009	0.000009	0.000009	0.000009	0.000010	0.000010	0.000006	0.000007	0.000010	0.000030
Technical specification limit	0.2	0.2	0.2	0.2	0.2	0.2	0.2	0.2	0.2	0.2	0.2	0.2
Indicator value	0	0	0	0	0	0	0	0	0	0	0	0

Reactor Coolant System Activity	10/01	11/01	12/01	1/02	2/02	3/02	4/02	5/02	6/02	7/02	8/02	9/02
Maximum activity	0.000040	0.000008	0.000020	0.000010	0.000004	0.000040	0.000007	0.000008	0.000007	0.000007	0.000004	0.000020
Technical specification limit	0.2	0.2	0.2	0.2	0.2	0.2	0.2	0.2	0.2	0.2	0.2	0.2
Indicator value	0	0	0	0	0	0	0	0	0	0	0	0

Licensee Comments: none

### Reactor Coolant System Leakage



Thresholds: White > 50.0 Yellow > 100.0

#### Notes

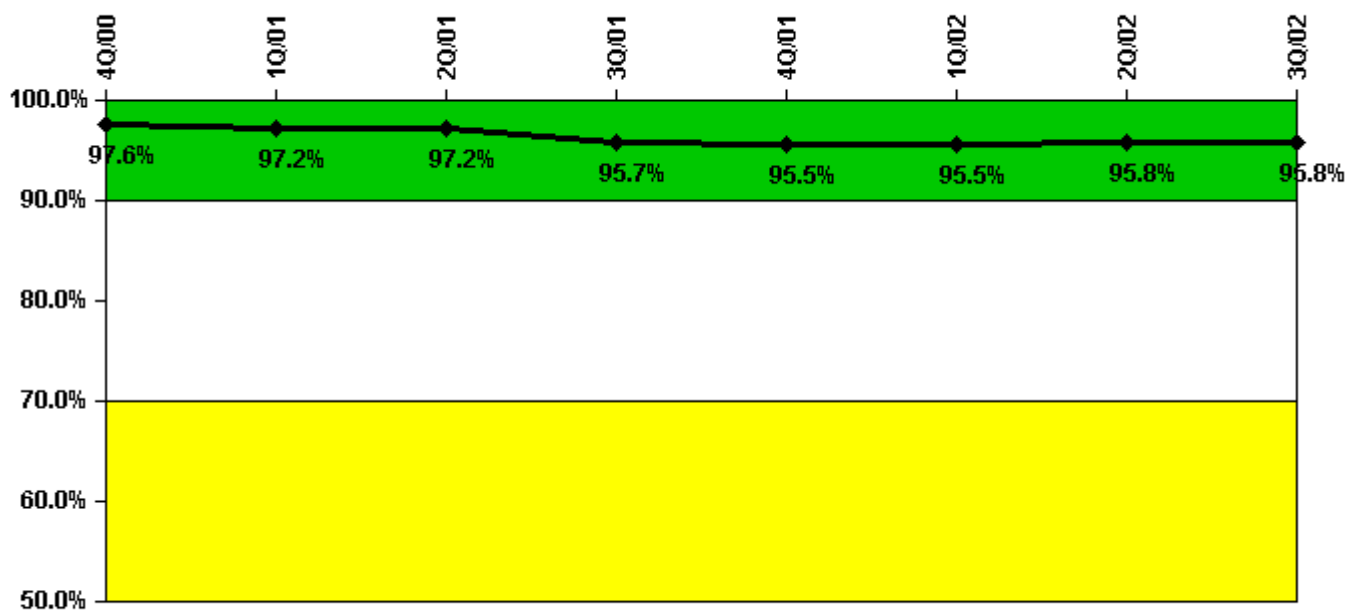
Reactor Coolant System Leakage	10/00	11/00	12/00	1/01	2/01	3/01	4/01	5/01	6/01	7/01	8/01	9/01
Maximum leakage	1.660	1.810	1.630	1.610	1.630	1.630	1.640	1.910	1.820	1.650	1.660	1.780
Technical specification limit	30.0	30.0	30.0	30.0	30.0	30.0	30.0	30.0	30.0	30.0	30.0	30.0
Indicator value	5.5	6.0	5.4	5.4	5.4	5.4	5.5	6.4	6.1	5.5	5.5	5.9

Reactor Coolant System Leakage	10/01	11/01	12/01	1/02	2/02	3/02	4/02	5/02	6/02	7/02	8/02	9/02
Maximum leakage	1.720	1.760	1.700	1.730	1.720	1.770	1.790	1.720	1.720	1.770	1.690	1.770
Technical specification limit	30.0	30.0	30.0	30.0	30.0	30.0	30.0	30.0	30.0	30.0	30.0	30.0
Indicator value	5.7	5.9	5.7	5.8	5.7	5.9	6.0	5.7	5.7	5.9	5.6	5.9

Licensee Comments: none

### Drill/Exercise Performance



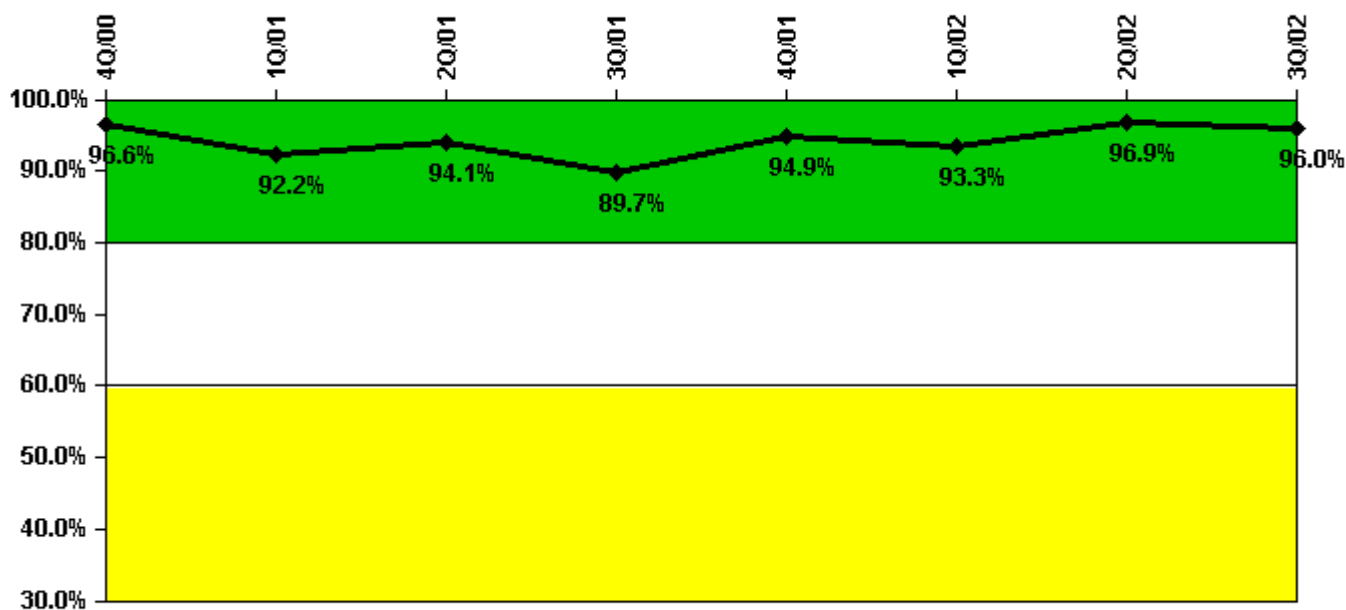
Thresholds: White < 90.0% Yellow < 70.0%

### Notes

Drill/Exercise Performance	4Q/00	1Q/01	2Q/01	3Q/01	4Q/01	1Q/02	2Q/02	3Q/02
Successful opportunities	0	18.0	33.0	17.0	8.0	0	8.0	54.0
Total opportunities	0	19.0	34.0	19.0	8.0	0	8.0	56.0
Indicator value	97.6%	97.2%	97.2%	95.7%	95.5%	95.5%	95.8%	95.8%

Licensee Comments: none

### ERO Drill Participation



Thresholds: White < 80.0% Yellow < 60.0%

#### Notes

ERO Drill Participation	4Q/00	1Q/01	2Q/01	3Q/01	4Q/01	1Q/02	2Q/02	3Q/02
Participating Key personnel	115.0	118.0	127.0	122.0	131.0	126.0	123.0	119.0
Total Key personnel	119.0	128.0	135.0	136.0	138.0	135.0	127.0	124.0
Indicator value	96.6%	92.2%	94.1%	89.7%	94.9%	93.3%	96.9%	96.0%

Licensee Comments: none

## Alert & Notification System

**Not applicable due to  
unique design  
characteristics.  
Performance in this area  
will be assessed through  
focused NRC inspection  
efforts.**

### Notes

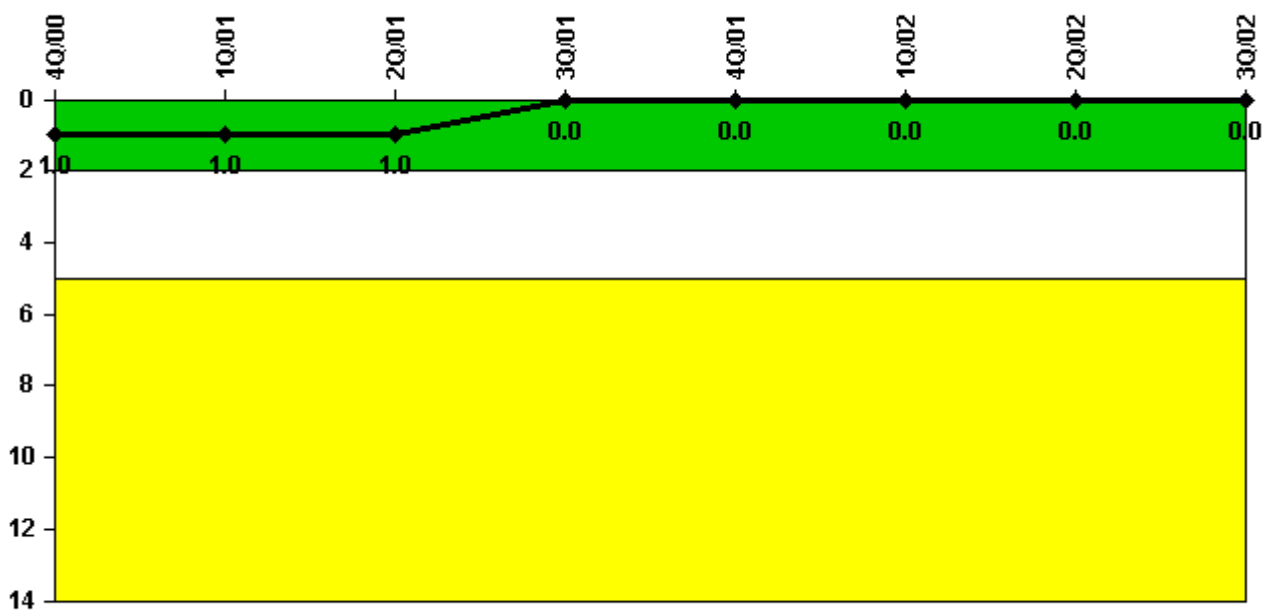
Alert & Notification System	4Q/00	1Q/01	2Q/01	3Q/01	4Q/01	1Q/02	2Q/02	3Q/02
Successful siren-tests								
Total sirens-tests								
Indicator value								

Licensee Comments:

3Q/02: Plant Hatch does not use sirens as an emergency notification system.

---

### Occupational Exposure Control Effectiveness



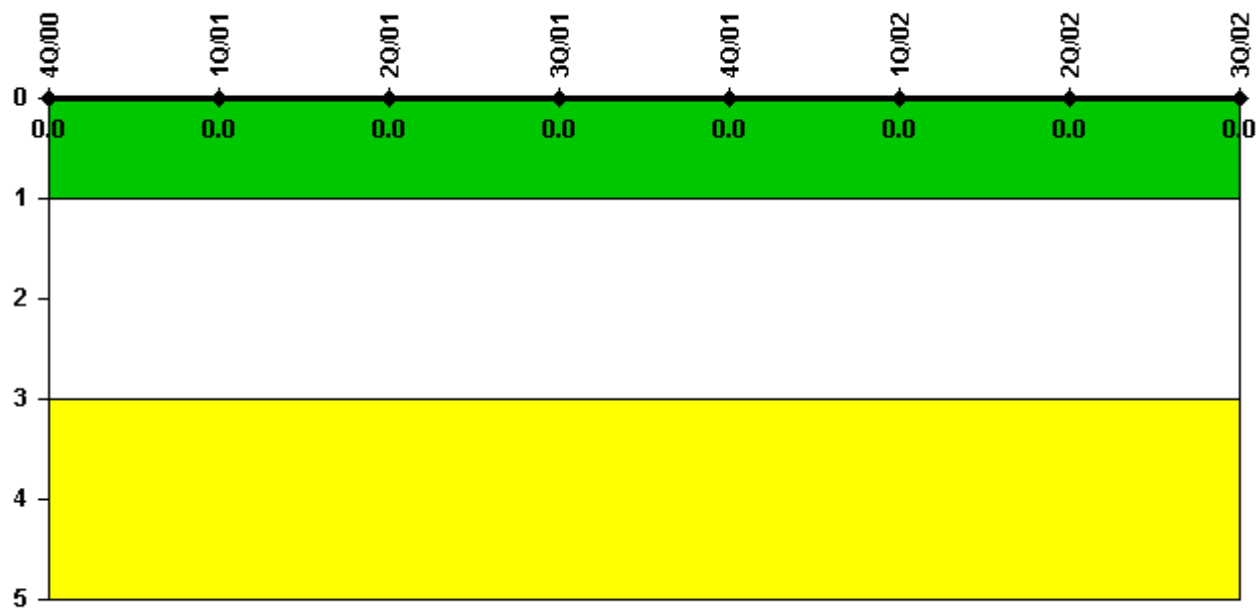
Thresholds: White > 2.0 Yellow > 5.0

#### Notes

Occupational Exposure Control Effectiveness	4Q/00	1Q/01	2Q/01	3Q/01	4Q/01	1Q/02	2Q/02	3Q/02
High radiation area occurrences	0	0	0	0	0	0	0	0
Very high radiation area occurrences	0	0	0	0	0	0	0	0
Unintended exposure occurrences	0	0	0	0	0	0	0	0
Indicator value	1	1	1	0	0	0	0	0

Licensee Comments: none

### RETS/ODCM Radiological Effluent



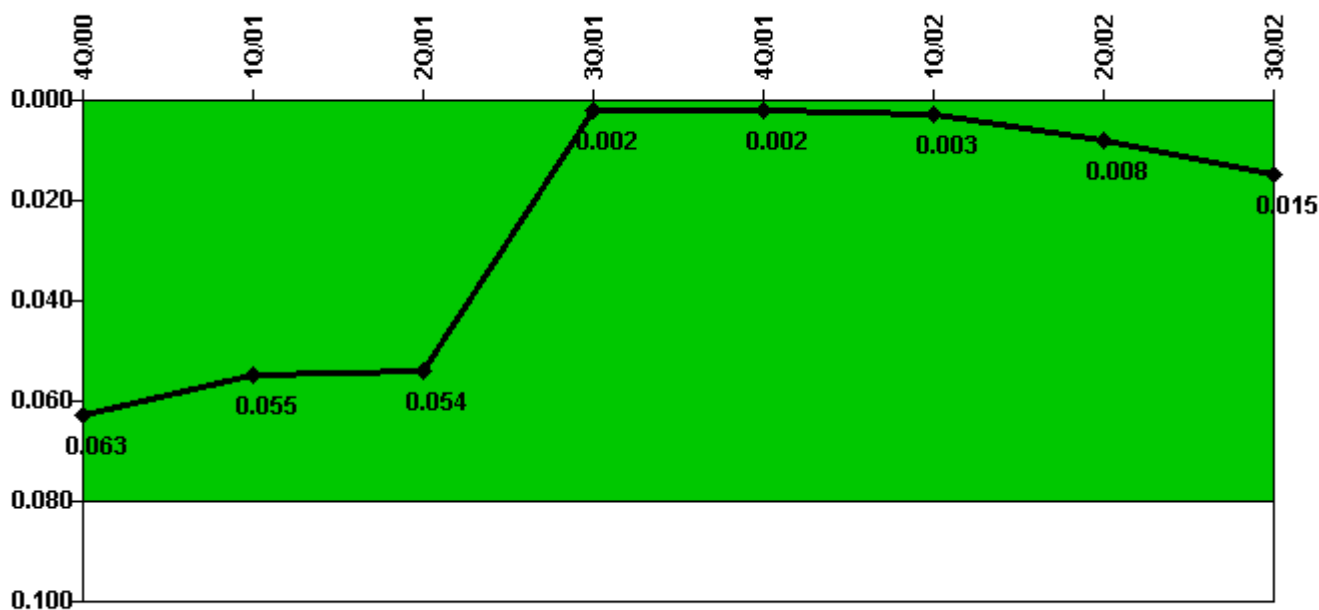
Thresholds: White > 1.0 Yellow > 3.0

#### Notes

RETS/ODCM Radiological Effluent	4Q/00	1Q/01	2Q/01	3Q/01	4Q/01	1Q/02	2Q/02	3Q/02
RETS/ODCM occurrences	0	0	0	0	0	0	0	0
Indicator value	0	0	0	0	0	0	0	0

Licensee Comments: none

### Protected Area Security Performance Index



Thresholds: White > 0.080

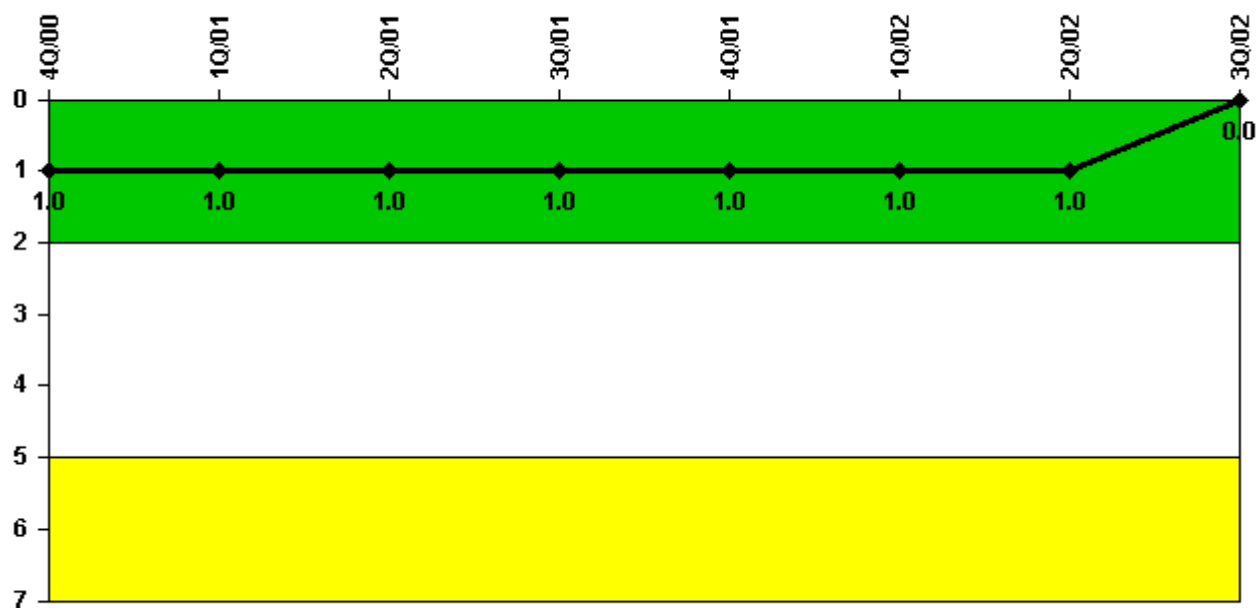
#### Notes

Protected Area Security Performance Index	4Q/00	1Q/01	2Q/01	3Q/01	4Q/01	1Q/02	2Q/02	3Q/02
IDS compensatory hours	19.62	0	0.47	0	20.50	20.75	14.06	142.38
CCTV compensatory hours	0	1.1	0	9.0	0	0	87.5	2.4
IDS normalization factor	1.10	1.10	1.10	1.10	1.10	1.10	1.10	1.10
CCTV normalization factor	1.1	1.0	1.0	1.0	1.0	1.0	1.0	1.0
Index Value	0.063	0.055	0.054	0.002	0.002	0.003	0.008	0.015

Licensee Comments: none



### Personnel Screening Program



Thresholds: White > 2.0 Yellow > 5.0

#### Notes

Personnel Screening Program	4Q/00	1Q/01	2Q/01	3Q/01	4Q/01	1Q/02	2Q/02	3Q/02
Program failures	0	0	0	1	0	0	0	0
Indicator value	1	1	1	1	1	1	1	0

Licensee Comments: none

### FFD/Personnel Reliability



Thresholds: White > 2.0 Yellow > 5.0

#### Notes

FFD/Personnel Reliability	4Q/00	1Q/01	2Q/01	3Q/01	4Q/01	1Q/02	2Q/02	3Q/02
Program Failures	0	0	0	0	0	0	0	0
Indicator value	0	0	0	0	0	0	0	0

Licensee Comments: none

▲ [PI Summary](#) | [Inspection Findings Summary](#) | [Reactor Oversight Process](#)

Last Modified: October 22, 2002