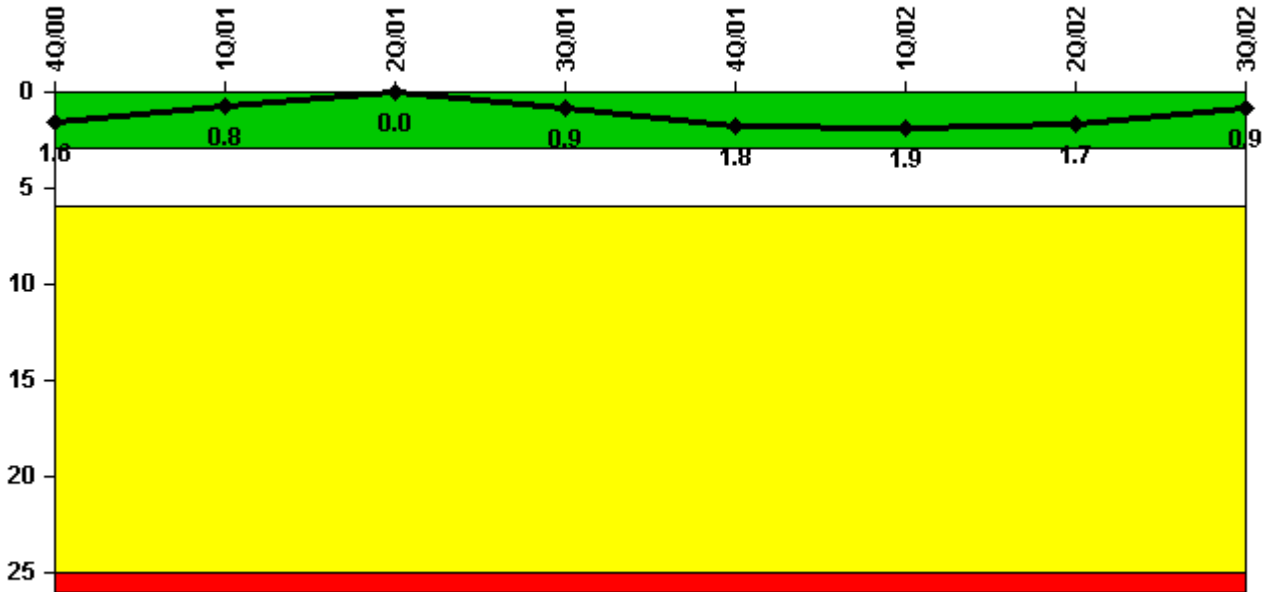


Duane Arnold

3Q/2002 Performance Indicators

Licensee's General Comments: none

Unplanned Scrams per 7000 Critical Hrs



Thresholds: White > 3.0 Yellow > 6.0 Red > 25.0

Notes

Unplanned Scrams per 7000 Critical Hrs	4Q/00	1Q/01	2Q/01	3Q/01	4Q/01	1Q/02	2Q/02	3Q/02
Unplanned scrams	0	0	0	1.0	1.0	0	0	0
Critical hours	2209.0	2160.0	1197.1	2159.5	2083.0	2054.0	2105.7	1896.5
Indicator value	1.6	0.8	0	0.9	1.8	1.9	1.7	0.9

Licensee Comments: none

Scrams with Loss of Normal Heat Removal



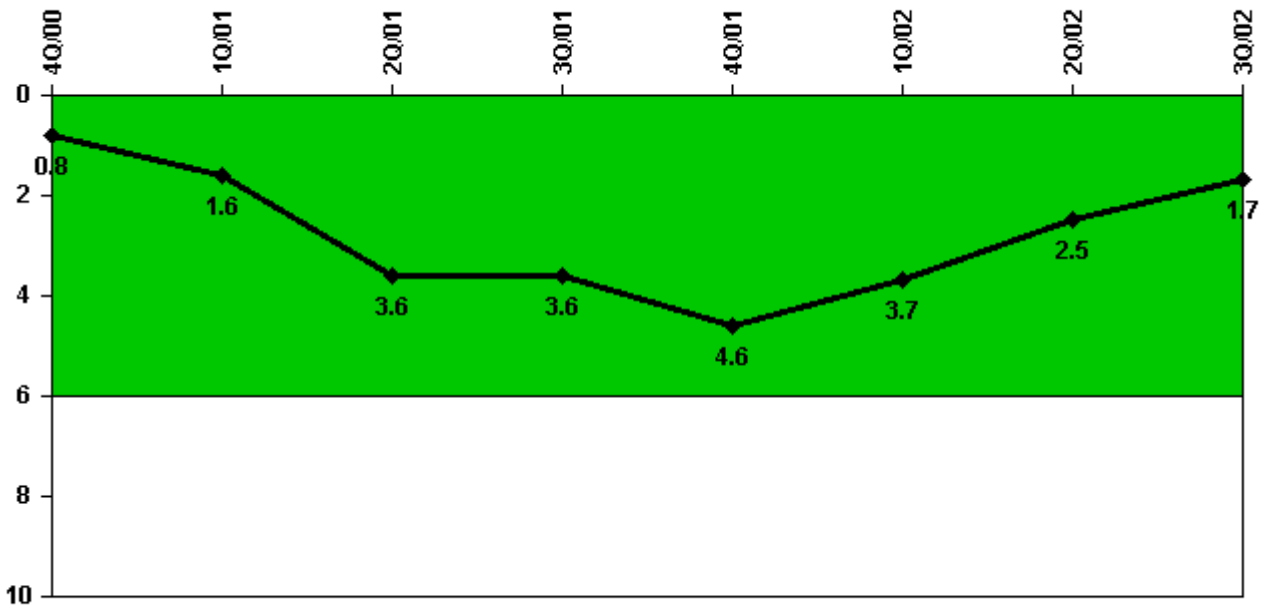
Thresholds: White > 2.0 Yellow > 10.0 Red > 20.0

Notes

Scrams with Loss of Normal Heat Removal	4Q/00	1Q/01	2Q/01	3Q/01	4Q/01	1Q/02	2Q/02	3Q/02
Scrams	0	0	0	0	0	0	0	0
Indicator value	0	0	0	0	0	0	0	0

Licensee Comments: none

Unplanned Power Changes per 7000 Critical Hrs



Thresholds: White > 6.0

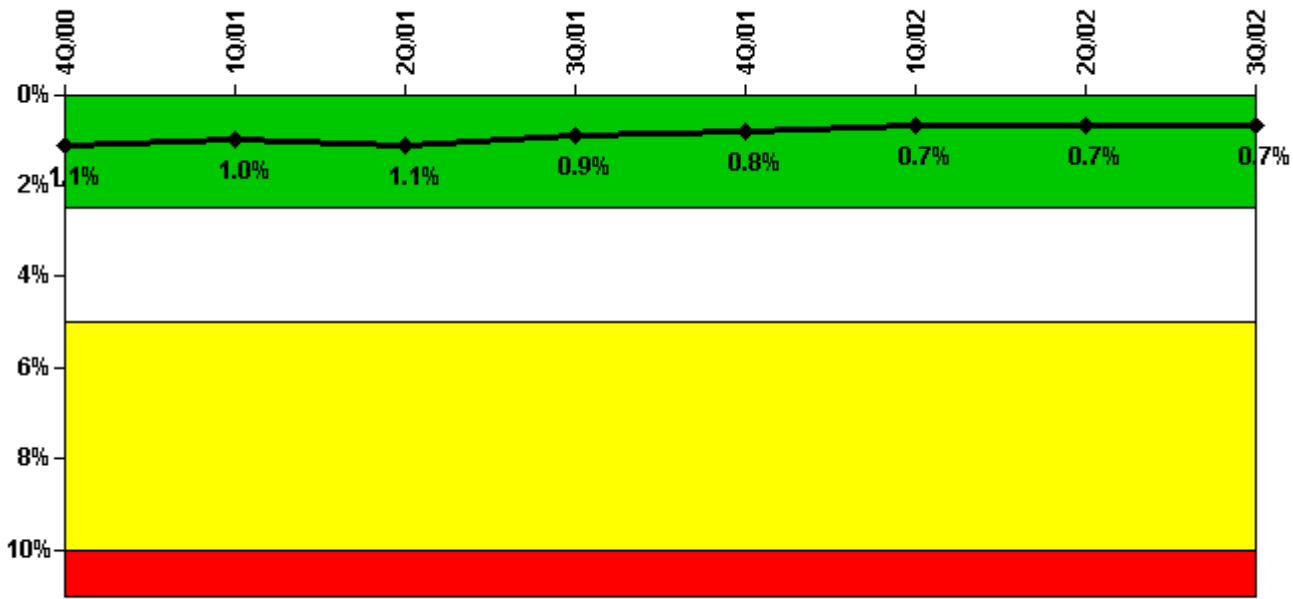
Notes

Unplanned Power Changes per 7000 Critical Hrs	4Q/00	1Q/01	2Q/01	3Q/01	4Q/01	1Q/02	2Q/02	3Q/02
Unplanned power changes	0	1.0	2.0	1.0	1.0	0	1.0	0
Critical hours	2209.0	2160.0	1197.1	2159.5	2083.0	2054.0	2105.7	1896.5
Indicator value	0.8	1.6	3.6	3.6	4.6	3.7	2.5	1.7

Licensee Comments:

3Q/02: On 8/6, loss of both RHRSW substems required a plant s/d due to unprecedented algae bloom at the intake structure and the RHRSW and ESW (Emergency Service Water) wet pits. The greater than 20% power change is excluded from this indicator because the shutdown was caused by the river water environment. FAQ submitted.

Safety System Unavailability, Emergency AC Power



Thresholds: White > 2.5% Yellow > 5.0% Red > 10.0%

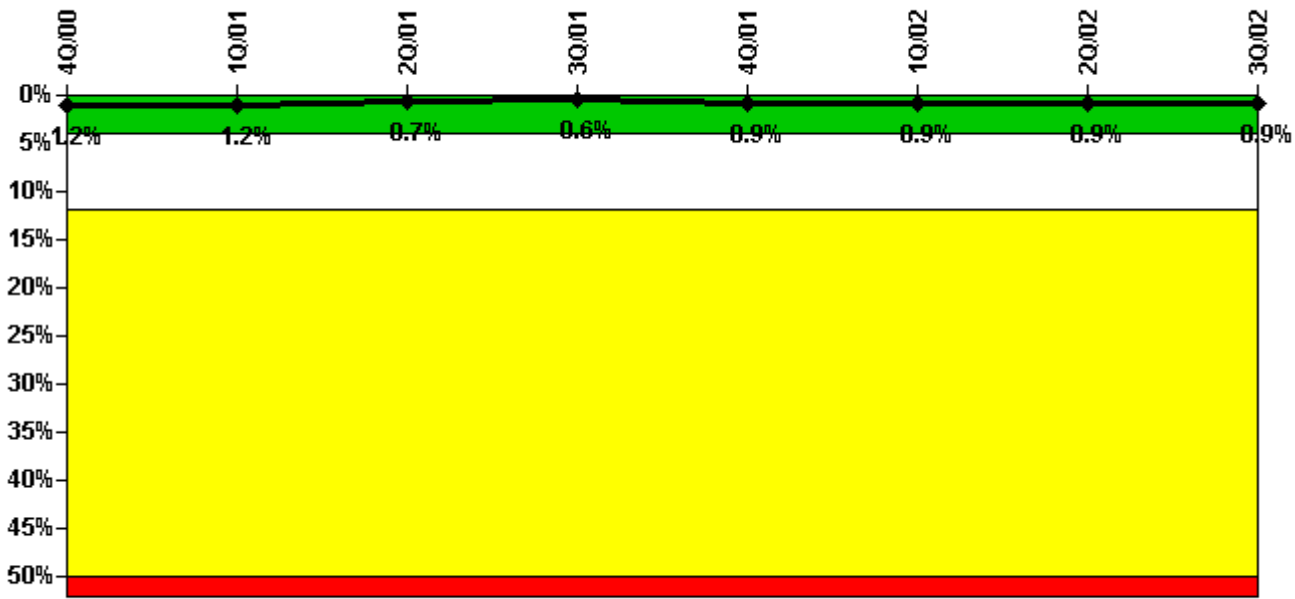
Notes

Safety System Unavailability, Emergency AC Power	4Q/00	1Q/01	2Q/01	3Q/01	4Q/01	1Q/02	2Q/02	3Q/02
Train 1								
Planned unavailable hours	11.07	14.46	3.43	14.76	6.80	10.92	10.18	11.95
Unplanned unavailable hours	0	0	0	0	0	0	0	0
Fault exposure hours	0	0	0	0	0	0	0	0
Effective Reset hours	0	0	0	0	0	0	0	0
Required hours	2209.00	2160.00	2013.80	2208.00	2209.00	2160.00	2183.00	2208.00
Train 2								
Planned unavailable hours	10.86	13.87	48.76	11.11	10.75	10.97	12.21	10.85
Unplanned unavailable hours	0	0	0	0	0	0	55.81	0
Fault exposure hours	0	0	0	0	0	0	0	0
Effective Reset hours	0	0	0	0	0	0	0	0
Required hours	2209.00	2160.00	2059.22	2208.00	2209.00	2160.00	2183.00	2208.00
Indicator value	1.1%	1.0%	1.1%	0.9%	0.8%	0.7%	0.7%	0.7%

Licensee Comments:

3Q/02: September "A" Diesel unavailability does not include 20.68 hours that were a part of on-line overhaul as outlined in treatment of planned overhaul maintenance in section 2.2

Safety System Unavailability, High Pressure Injection System (HPCI)



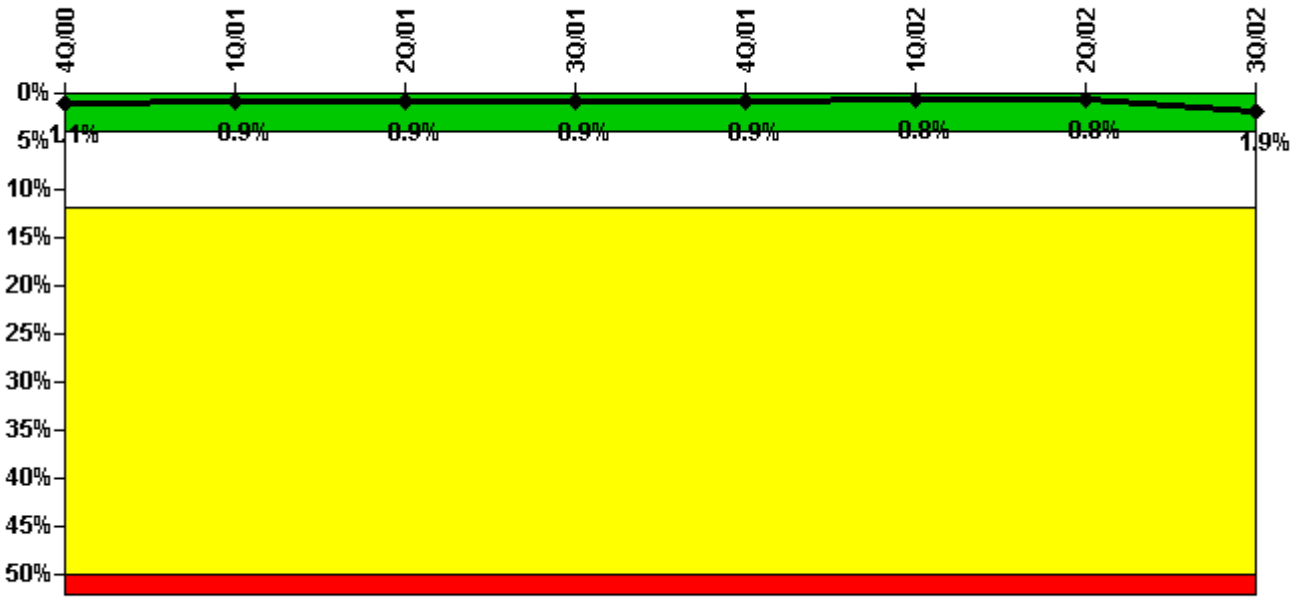
Thresholds: White > 4.0% Yellow > 12.0% Red > 50.0%

Notes

Safety System Unavailability, High Pressure Injection System (HPCI)	4Q/00	1Q/01	2Q/01	3Q/01	4Q/01	1Q/02	2Q/02	3Q/02
Train 1								
Planned unavailable hours	0	19.54	2.67	0	68.40	20.86	0	0
Unplanned unavailable hours	0	0	5.10	7.03	3.00	0	0	0
Fault exposure hours	0	0	0	0	0	0	0	0
Effective Reset hours	0	0	0	0	0	0	0	0
Required hours	2209.00	2160.00	1197.10	2159.50	2083.00	2054.00	2105.70	1896.50
Indicator value	1.2%	1.2%	0.7%	0.6%	0.9%	0.9%	0.9%	0.9%

Licensee Comments: none

Safety System Unavailability, Heat Removal System (RCIC)



Thresholds: White > 4.0% Yellow > 12.0% Red > 50.0%

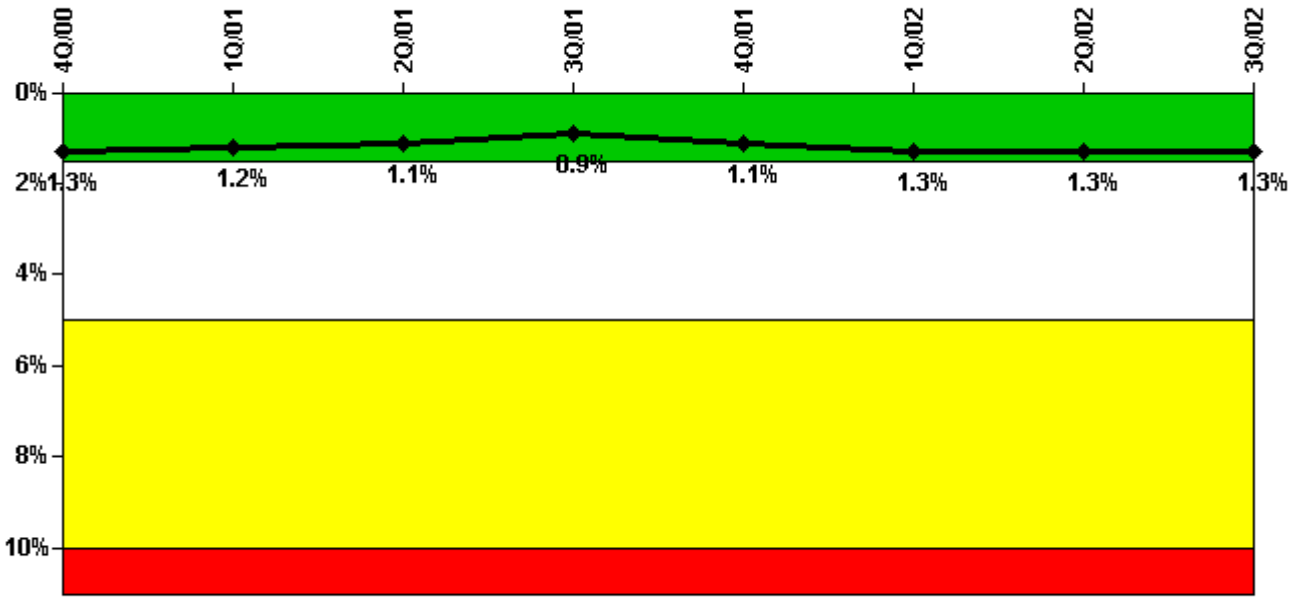
Notes

Safety System Unavailability, Heat Removal System (RCIC)	4Q/00	1Q/01	2Q/01	3Q/01	4Q/01	1Q/02	2Q/02	3Q/02
Train 1								
Planned unavailable hours	0	11.68	0	8.00	1.00	17.80	0	38.70
Unplanned unavailable hours	0	0	0	5.00	0	0	0	254.50
Fault exposure hours	0	0	0	0	0	0	0	0
Effective Reset hours	0	0	0	0	0	0	0	0
Required hours	2209.00	2160.00	1197.10	2159.50	2083.00	2054.00	2105.70	1896.50
Indicator value	1.1%	0.9%	0.9%	0.9%	0.9%	0.8%	0.8%	1.9%

Licensee Comments:

3Q/02: On August 21st, following planned post-maintenance testing of relief valves, a Low Oil Pressure alarm was received and RCIC declared inoperable. It was subsequently determined that entrapped air in the lube oil system had resulted in an oil system leak. Troubleshooting had continued during the (unrelated) August 30th plant shutdown to repair the drywell coolers. RCIC unavailability ceased with the plant shutdown. Modifications to RCIC were performed, RCIC declared operable on Sept 7, and the reactor startup commenced.

Safety System Unavailability, Residual Heat Removal System



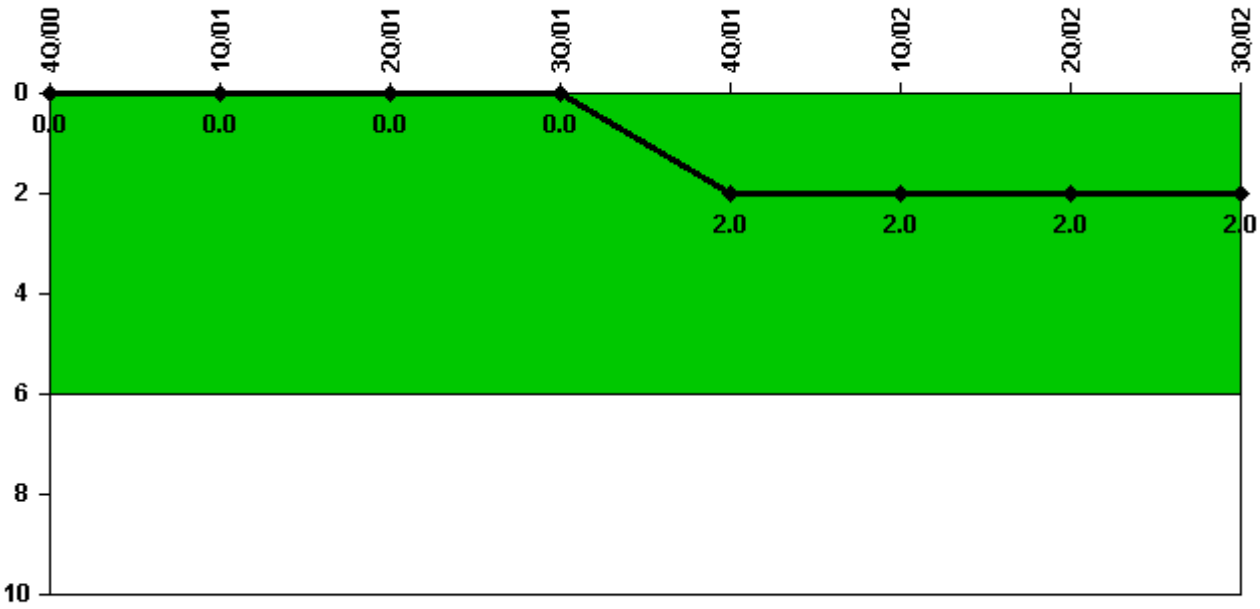
Thresholds: White > 1.5% Yellow > 5.0% Red > 10.0%

Notes

Safety System Unavailability, Residual Heat Removal System	4Q/00	1Q/01	2Q/01	3Q/01	4Q/01	1Q/02	2Q/02	3Q/02
Train 1								
Planned unavailable hours	25.08	16.42	0	0	110.12	57.70	0	18.27
Unplanned unavailable hours	0	0	0	0	0	0	0	0
Fault exposure hours	0	0	0	0	0	0	0	0
Effective Reset hours	0	0	0	0	0	0	0	0
Required hours	2209.00	2160.00	2183.00	2208.00	2209.00	2160.00	2183.00	2208.00
Train 2								
Planned unavailable hours	42.73	6.80	0	37.38	44.28	76.70	23.20	15.03
Unplanned unavailable hours	0	0	0	0	0	0	55.32	0
Fault exposure hours	0	0	0	0	0	0	0	0
Effective Reset hours	0	0	0	0	0	0	0	0
Required hours	2209.00	2160.00	2183.00	2208.00	2209.00	2160.00	2183.00	2208.00
Indicator value	1.3%	1.2%	1.1%	0.9%	1.1%	1.3%	1.3%	1.3%

Licensee Comments: none

Safety System Functional Failures (BWR)



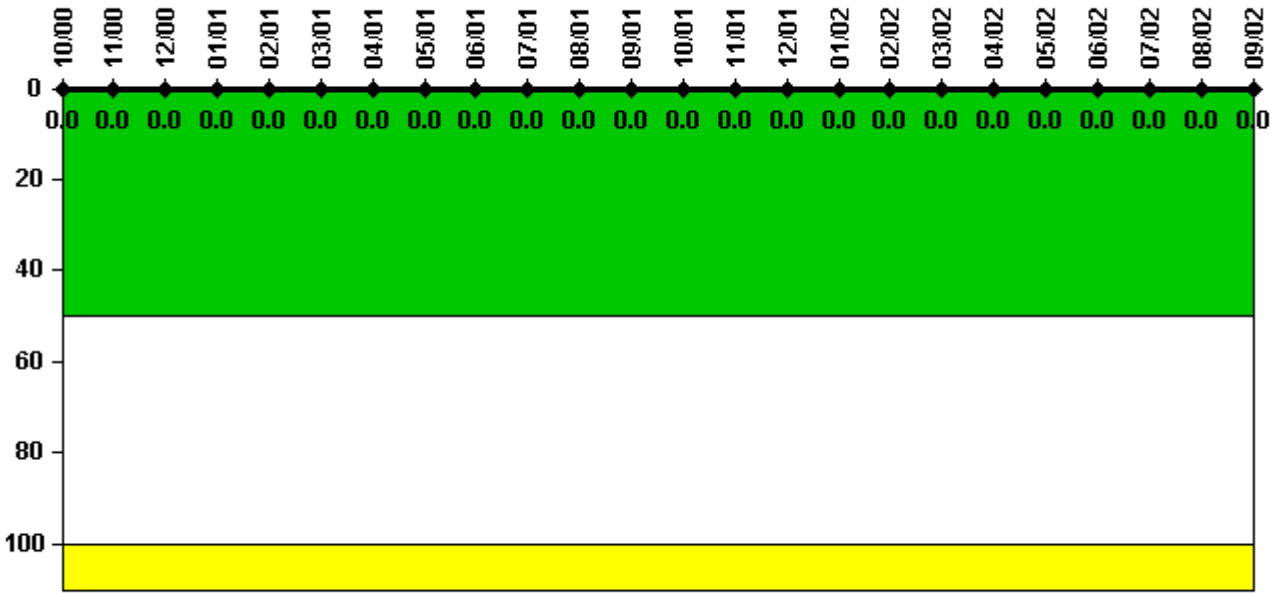
Thresholds: White > 6.0

Notes

Safety System Functional Failures (BWR)	4Q/00	1Q/01	2Q/01	3Q/01	4Q/01	1Q/02	2Q/02	3Q/02
Safety System Functional Failures	0	0	0	0	2	0	0	0
Indicator value	0	0	0	0	2	2	2	2

Licensee Comments: none

Reactor Coolant System Activity



Thresholds: White > 50.0 Yellow > 100.0

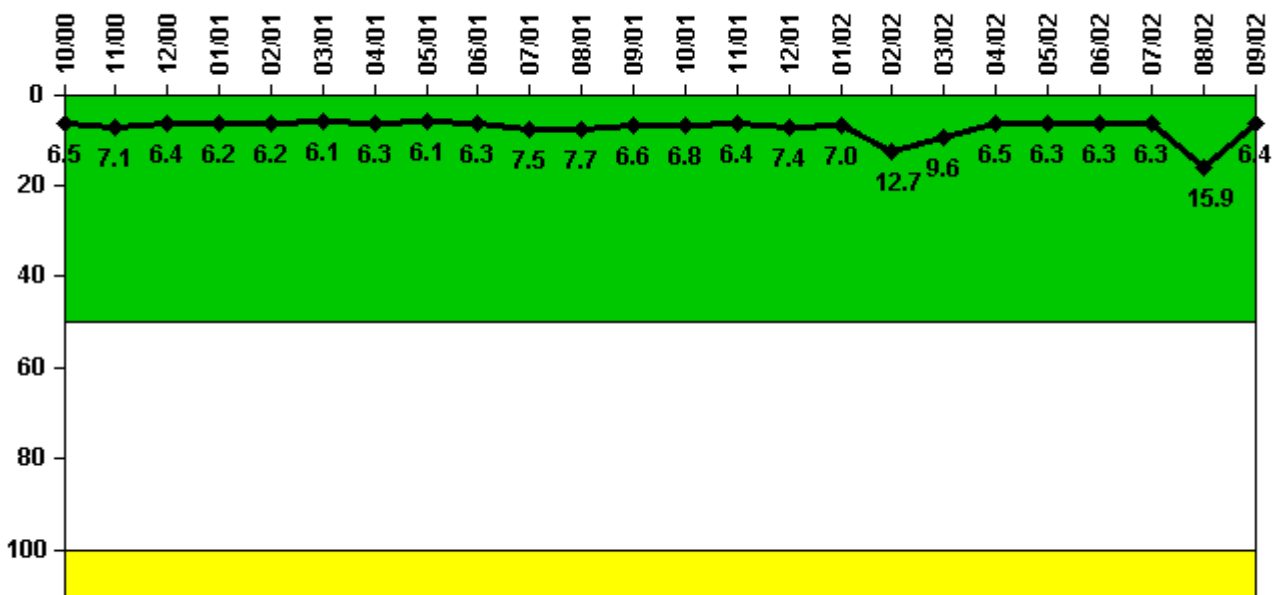
Notes

Reactor Coolant System Activity	10/00	11/00	12/00	1/01	2/01	3/01	4/01	5/01	6/01	7/01	8/01	9/01
Maximum activity	0	0.000004	0	0	0.000002	0	0	0	0	0	0	0
Technical specification limit	1.2	1.2	1.2	1.2	1.2	1.2	1.2	1.2	1.2	1.2	0.2	0.2
Indicator value	0	0	0	0	0	0	0	0	0	0	0	0

Reactor Coolant System Activity	10/01	11/01	12/01	1/02	2/02	3/02	4/02	5/02	6/02	7/02	8/02	9/02
Maximum activity	0.000002	0	0	0	0	0.000003	0	0.000004	0	0	0	0
Technical specification limit	0.2	0.2	0.2	0.2	0.2	0.2	0.2	0.2	0.2	0.2	0.2	0.2
Indicator value	0	0	0	0	0	0	0	0	0	0	0	0

Licensee Comments: none

Reactor Coolant System Leakage



Thresholds: White > 50.0 Yellow > 100.0

Notes

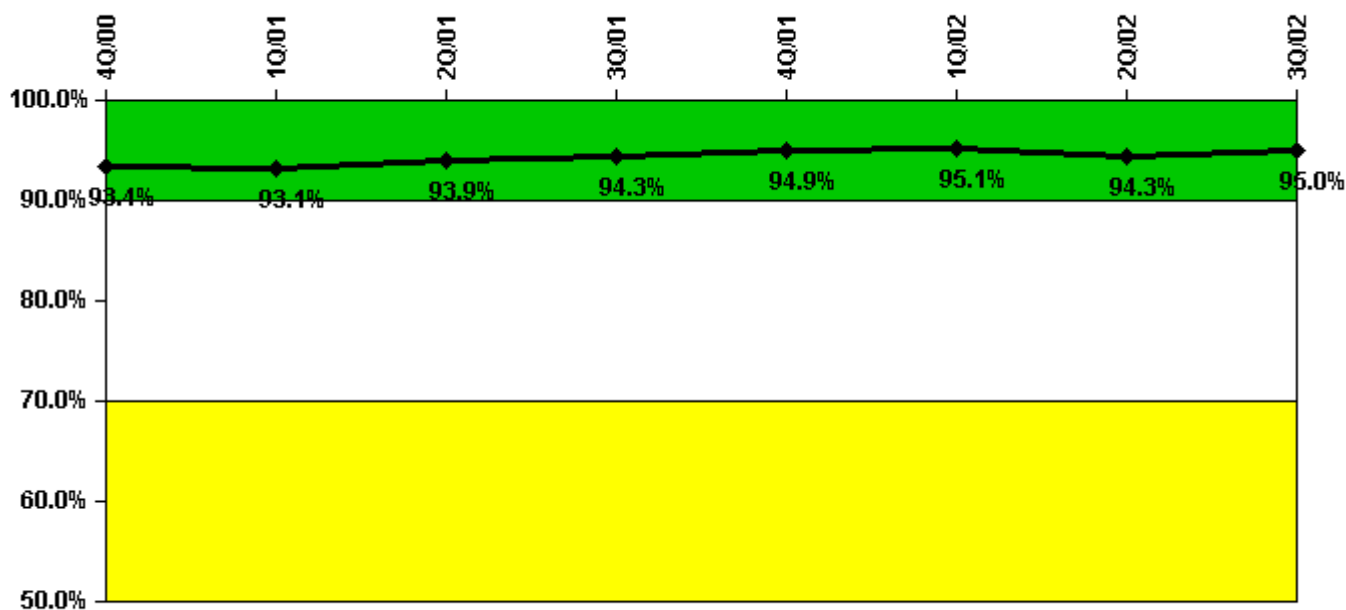
Reactor Coolant System Leakage	10/00	11/00	12/00	1/01	2/01	3/01	4/01	5/01	6/01	7/01	8/01	9/01
Maximum leakage	1.620	1.780	1.590	1.550	1.540	1.530	1.580	1.530	1.570	1.880	1.920	1.640
Technical specification limit	25.0	25.0	25.0	25.0	25.0	25.0	25.0	25.0	25.0	25.0	25.0	25.0
Indicator value	6.5	7.1	6.4	6.2	6.2	6.1	6.3	6.1	6.3	7.5	7.7	6.6

Reactor Coolant System Leakage	10/01	11/01	12/01	1/02	2/02	3/02	4/02	5/02	6/02	7/02	8/02	9/02
Maximum leakage	1.690	1.600	1.850	1.740	3.170	2.390	1.620	1.580	1.580	1.580	3.980	1.590
Technical specification limit	25.0	25.0	25.0	25.0	25.0	25.0	25.0	25.0	25.0	25.0	25.0	25.0
Indicator value	6.8	6.4	7.4	7.0	12.7	9.6	6.5	6.3	6.3	6.3	15.9	6.4

Licensee Comments:

9/02: Leakage rate increase due to leakage from well water used for drywell cooling.

Drill/Exercise Performance



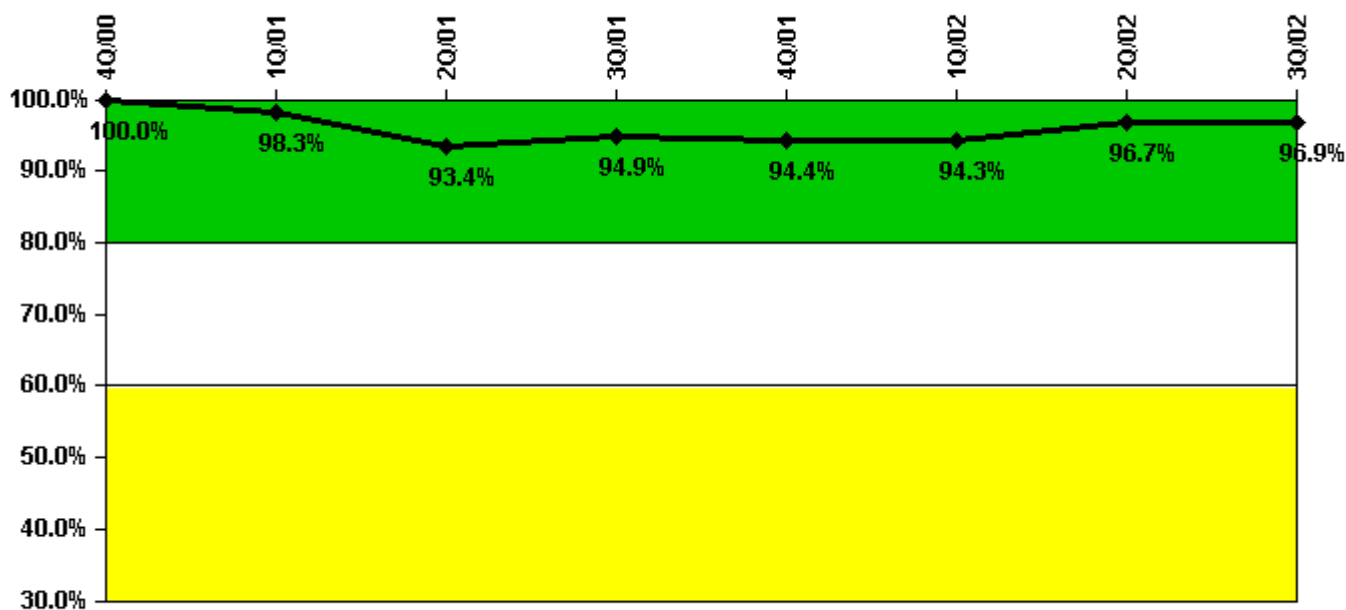
Thresholds: White < 90.0% Yellow < 70.0%

Notes

Drill/Exercise Performance	4Q/00	1Q/01	2Q/01	3Q/01	4Q/01	1Q/02	2Q/02	3Q/02
Successful opportunities	9.0	8.0	32.0	27.0	56.0	22.0	66.0	9.0
Total opportunities	9.0	8.0	32.0	29.0	58.0	24.0	71.0	10.0
Indicator value	93.4%	93.1%	93.9%	94.3%	94.9%	95.1%	94.3%	95.0%

Licensee Comments: none

ERO Drill Participation



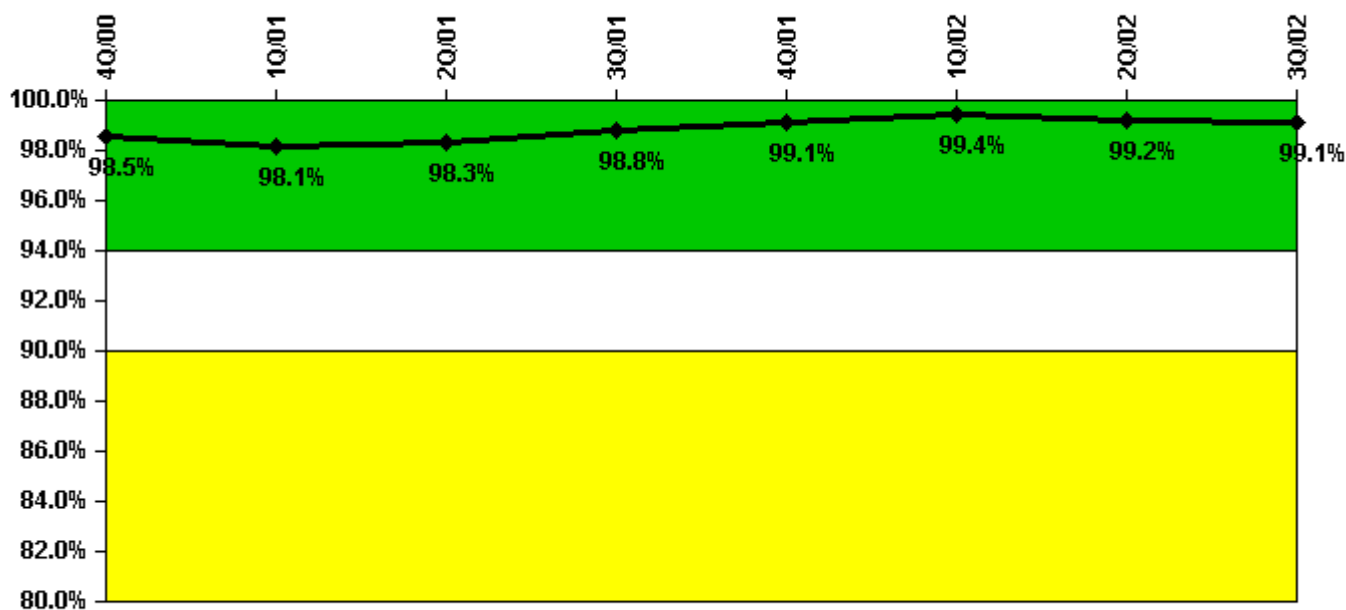
Thresholds: White < 80.0% Yellow < 60.0%

Notes

ERO Drill Participation	4Q/00	1Q/01	2Q/01	3Q/01	4Q/01	1Q/02	2Q/02	3Q/02
Participating Key personnel	52.0	59.0	57.0	56.0	51.0	50.0	59.0	62.0
Total Key personnel	52.0	60.0	61.0	59.0	54.0	53.0	61.0	64.0
Indicator value	100.0%	98.3%	93.4%	94.9%	94.4%	94.3%	96.7%	96.9%

Licensee Comments: none

Alert & Notification System



Thresholds: White < 94.0% Yellow < 90.0%

Notes

Alert & Notification System	4Q/00	1Q/01	2Q/01	3Q/01	4Q/01	1Q/02	2Q/02	3Q/02
Successful siren-tests	423	422	426	425	427	427	423	424
Total sirens-tests	429	429	429	429	429	429	429	429
Indicator value	98.5%	98.1%	98.3%	98.8%	99.1%	99.4%	99.2%	99.1%

Licensee Comments: none

Occupational Exposure Control Effectiveness



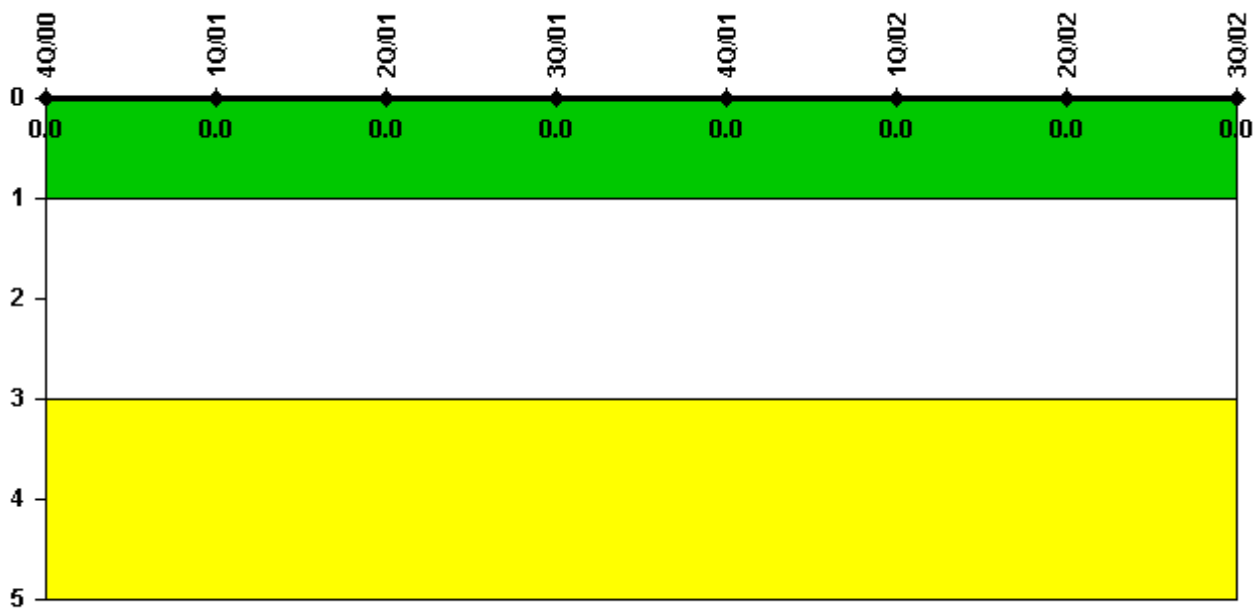
Thresholds: White > 2.0 Yellow > 5.0

Notes

Occupational Exposure Control Effectiveness	4Q/00	1Q/01	2Q/01	3Q/01	4Q/01	1Q/02	2Q/02	3Q/02
High radiation area occurrences	0	0	0	0	0	0	0	0
Very high radiation area occurrences	0	0	0	0	0	0	0	0
Unintended exposure occurrences	0	0	0	0	0	0	0	0
Indicator value	0	0	0	0	0	0	0	0

Licensee Comments: none

RETS/ODCM Radiological Effluent



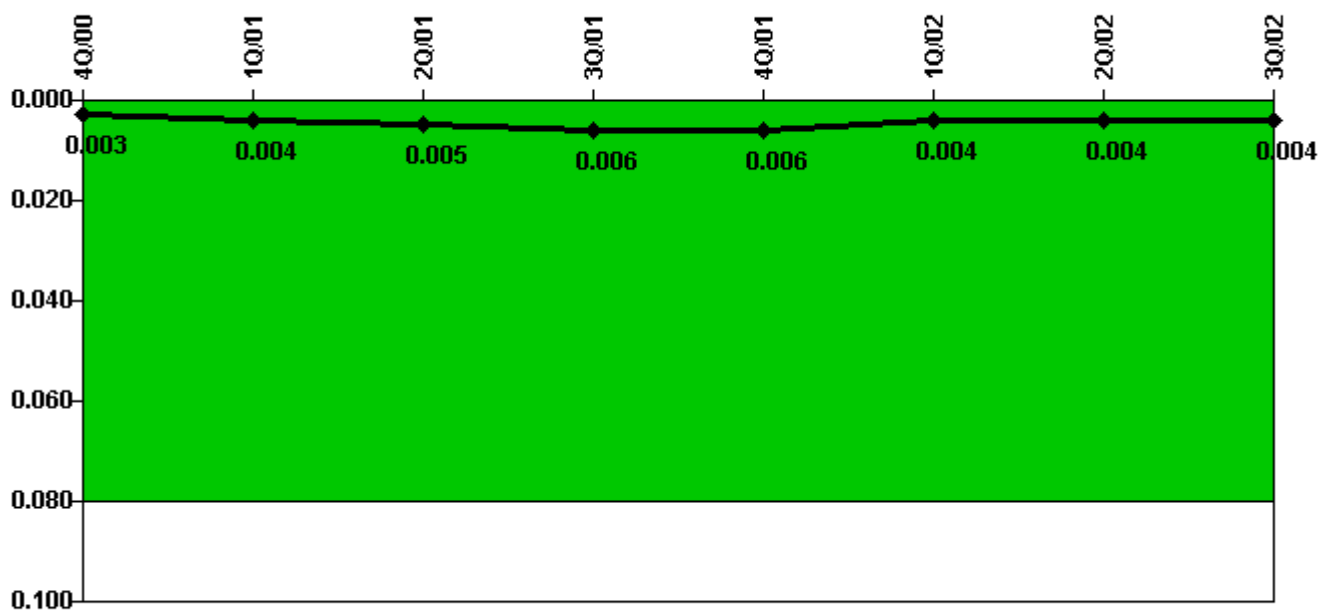
Thresholds: White > 1.0 Yellow > 3.0

Notes

RETS/ODCM Radiological Effluent	4Q/00	1Q/01	2Q/01	3Q/01	4Q/01	1Q/02	2Q/02	3Q/02
RETS/ODCM occurrences	0	0	0	0	0	0	0	0
Indicator value	0	0	0	0	0	0	0	0

Licensee Comments: none

Protected Area Security Performance Index



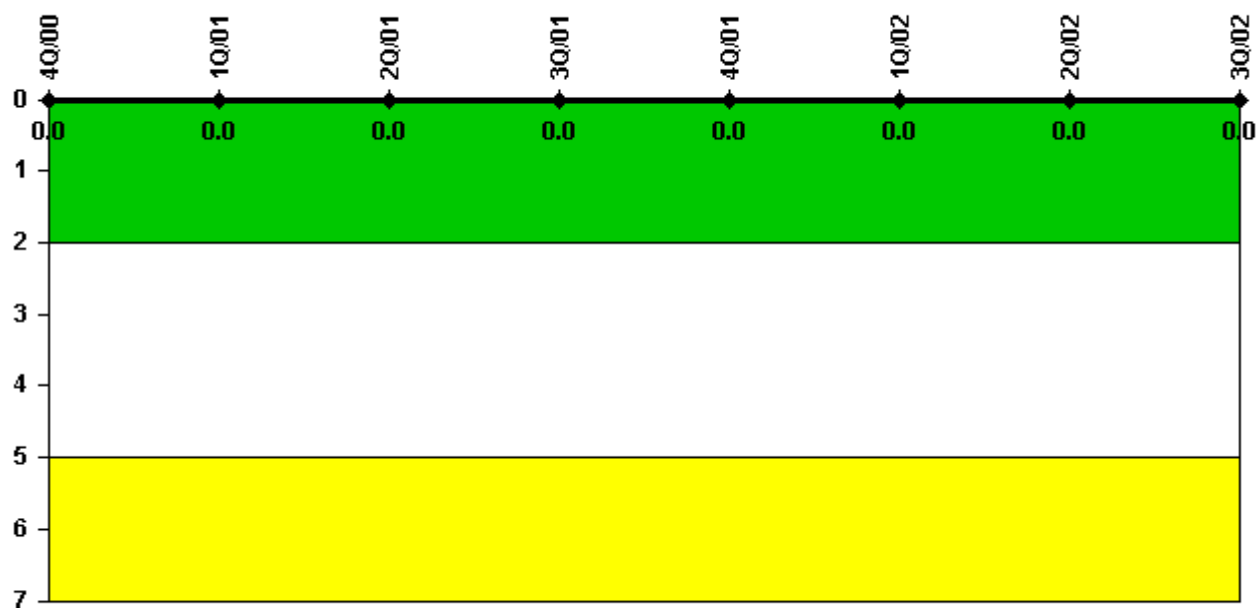
Thresholds: White > 0.080

Notes

Protected Area Security Performance Index	4Q/00	1Q/01	2Q/01	3Q/01	4Q/01	1Q/02	2Q/02	3Q/02
IDS compensatory hours	29.93	42.49	15.32	33.51	21.52	11.32	6.77	19.93
CCTV compensatory hours	0.4	5.3	0.5	0.3	0	1.5	14.7	2.3
IDS normalization factor	1.20	1.20	1.20	1.20	1.20	1.20	1.20	1.20
CCTV normalization factor	1.0	1.0	1.0	1.0	1.0	1.0	1.0	1.0
Index Value	0.003	0.004	0.005	0.006	0.006	0.004	0.004	0.004

Licensee Comments: none

Personnel Screening Program



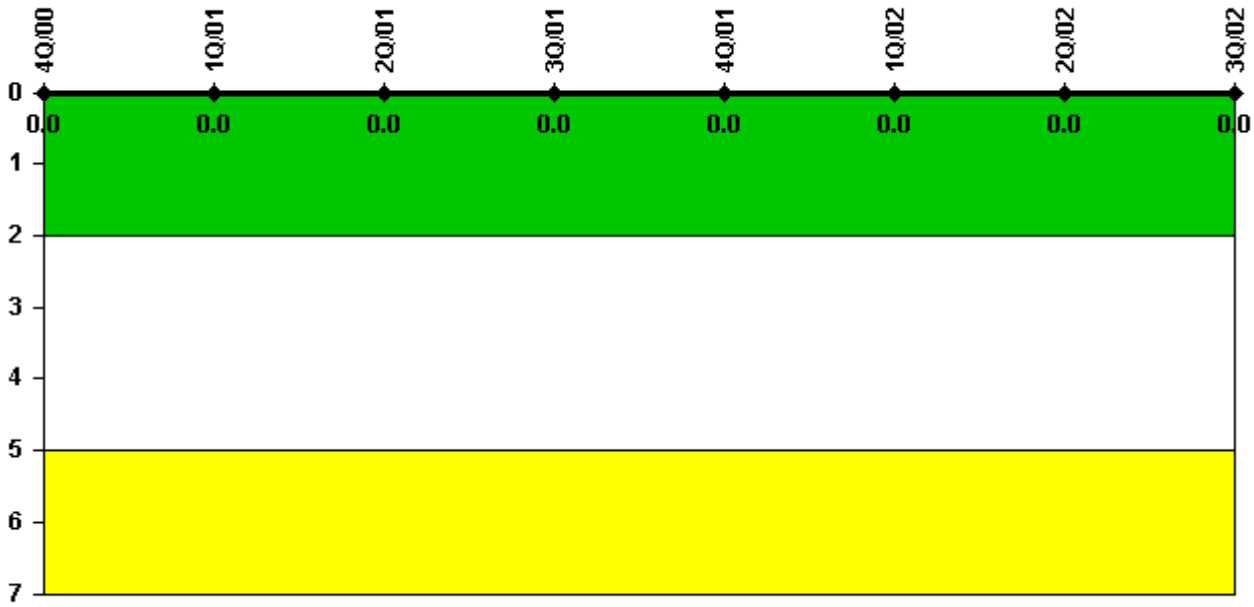
Thresholds: White > 2.0 Yellow > 5.0

Notes

Personnel Screening Program	4Q/00	1Q/01	2Q/01	3Q/01	4Q/01	1Q/02	2Q/02	3Q/02
Program failures	0	0	0	0	0	0	0	0
Indicator value	0	0	0	0	0	0	0	0

Licensee Comments: none

FFD/Personnel Reliability



Thresholds: White > 2.0 Yellow > 5.0

Notes

FFD/Personnel Reliability	4Q/00	1Q/01	2Q/01	3Q/01	4Q/01	1Q/02	2Q/02	3Q/02
Program Failures	0	0	0	0	0	0	0	0
Indicator value	0	0	0	0	0	0	0	0

Licensee Comments: none

▲ [PI Summary](#) | [Inspection Findings Summary](#) | [Reactor Oversight Process](#)

Last Modified: October 22, 2002