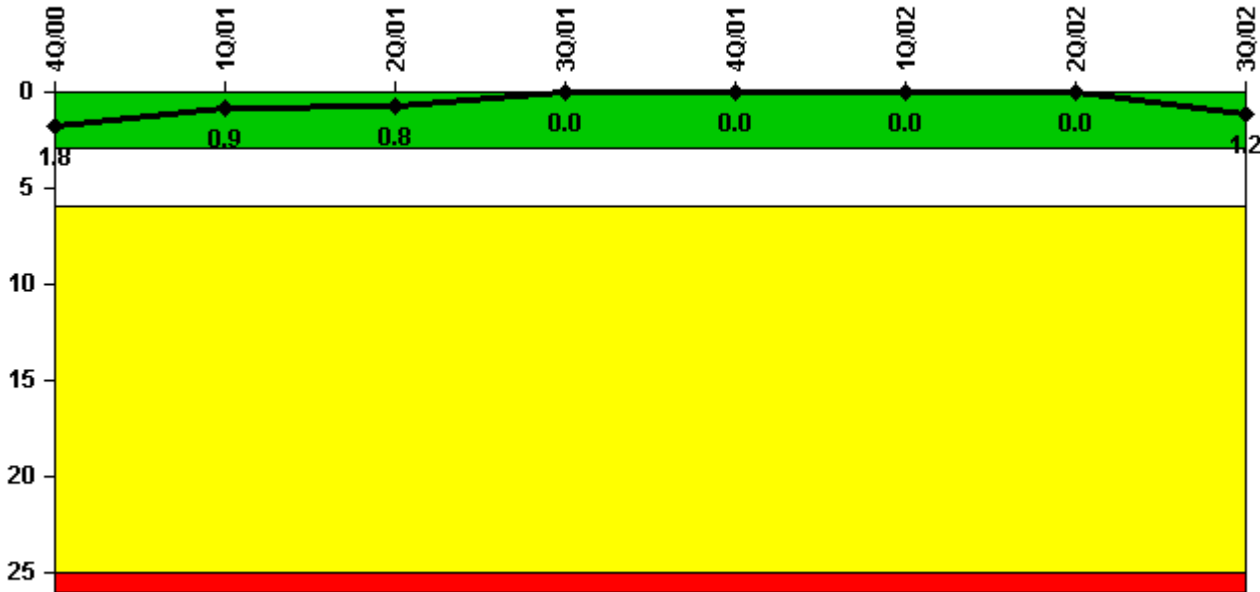


Calvert Cliffs 1

3Q/2002 Performance Indicators

Licensee's General Comments: none

Unplanned Scrams per 7000 Critical Hrs



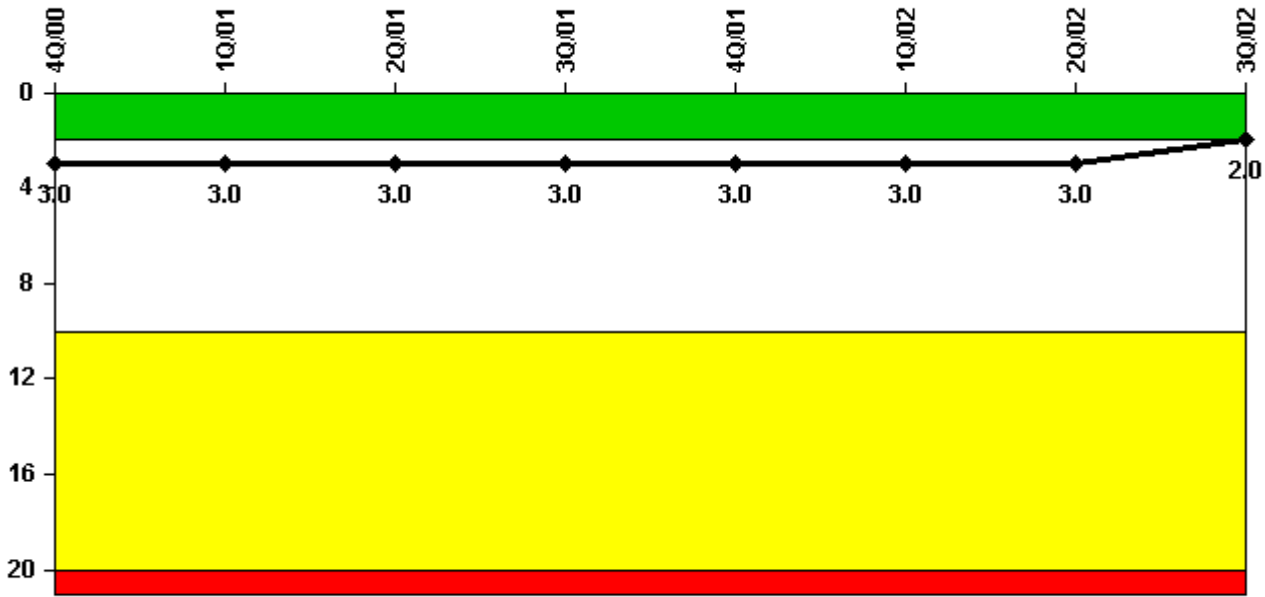
Thresholds: White > 3.0 Yellow > 6.0 Red > 25.0

Notes

Unplanned Scrams per 7000 Critical Hrs	4Q/00	1Q/01	2Q/01	3Q/01	4Q/01	1Q/02	2Q/02	3Q/02
Unplanned scrams	0	0	0	0	0	0	0	1.0
Critical hours	2209.0	2160.0	2157.2	2208.0	2209.0	1104.0	309.8	2107.9
Indicator value	1.8	0.9	0.8	0	0	0	0	1.2

Licensee Comments: none

Scrams with Loss of Normal Heat Removal



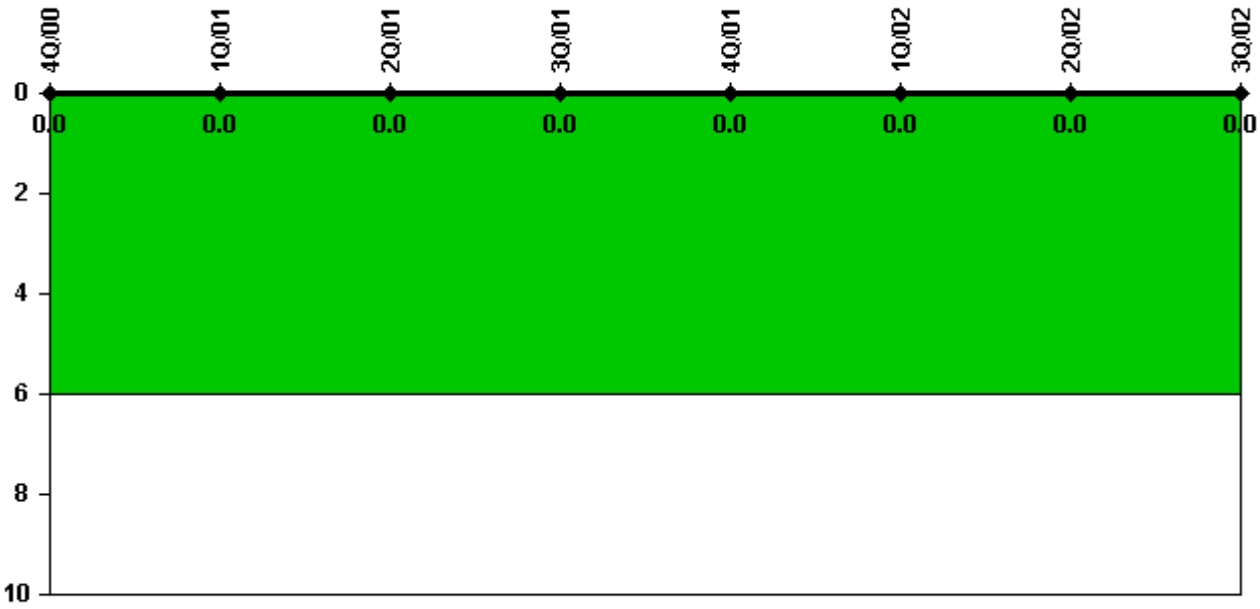
Thresholds: White > 2.0 Yellow > 10.0 Red > 20.0

Notes

Scrams with Loss of Normal Heat Removal	4Q/00	1Q/01	2Q/01	3Q/01	4Q/01	1Q/02	2Q/02	3Q/02
Scrams	0	0	0	0	0	0	0	0
Indicator value	3.0	3.0	3.0	3.0	3.0	3.0	3.0	2.0

Licensee Comments: none

Unplanned Power Changes per 7000 Critical Hrs



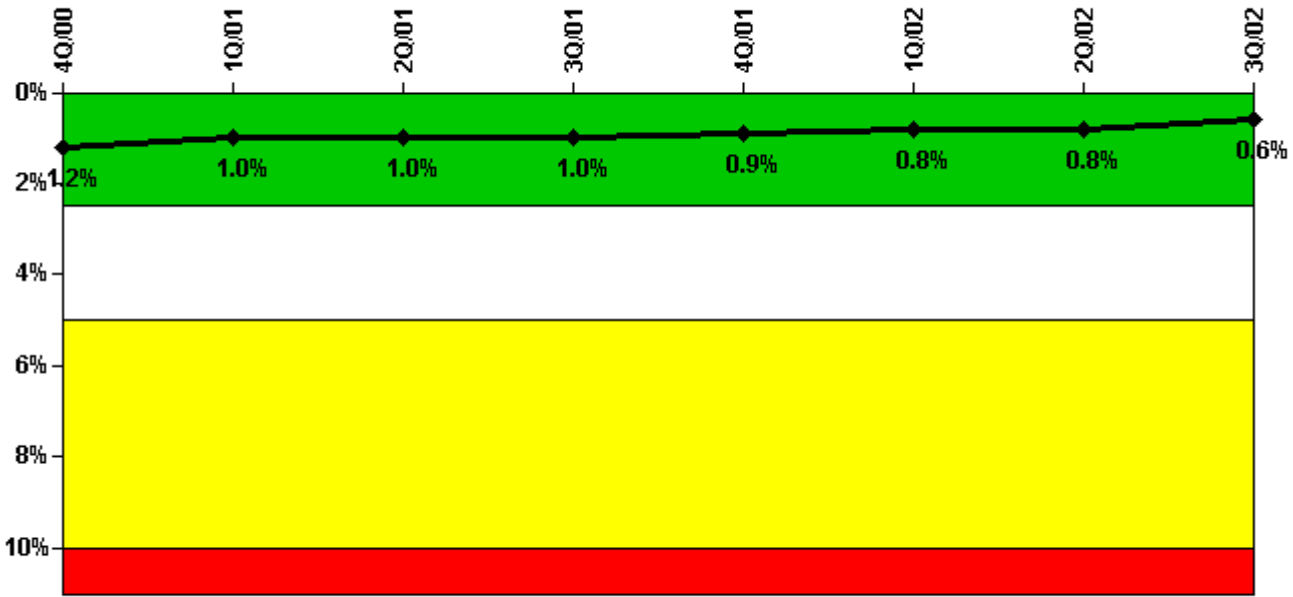
Thresholds: White > 6.0

Notes

Unplanned Power Changes per 7000 Critical Hrs	4Q/00	1Q/01	2Q/01	3Q/01	4Q/01	1Q/02	2Q/02	3Q/02
Unplanned power changes	0	0	0	0	0	0	0	0
Critical hours	2209.0	2160.0	2157.2	2208.0	2209.0	1104.0	309.8	2107.9
Indicator value	0	0	0	0	0	0	0	0

Licensee Comments: none

Safety System Unavailability, Emergency AC Power



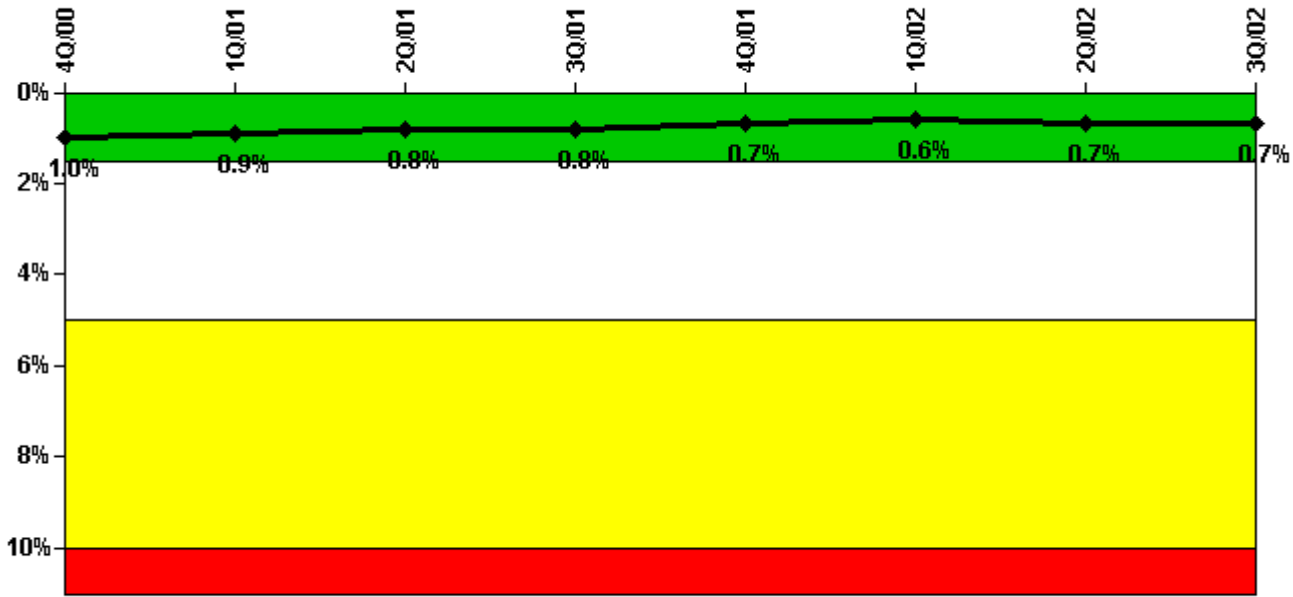
Thresholds: White > 2.5% Yellow > 5.0% Red > 10.0%

Notes

Safety System Unavailability, Emergency AC Power	4Q/00	1Q/01	2Q/01	3Q/01	4Q/01	1Q/02	2Q/02	3Q/02
Train 1								
Planned unavailable hours	3.73	42.22	8.35	3.50	2.17	1.42	0	0
Unplanned unavailable hours	0	10.72	29.80	0	0	0	0	0
Fault exposure hours	0	0	0	0	0	0	0	0
Effective Reset hours	0	0	0	0	0	0	0	0
Required hours	2209.00	2160.00	2183.00	2208.00	2209.00	2160.00	2183.00	2208.00
Train 2								
Planned unavailable hours	0	33.50	0	2.58	0.25	0.83	0	7.48
Unplanned unavailable hours	6.33	1.57	0	0	0	0	0	2.00
Fault exposure hours	0	0	0	0	0	0	0	0
Effective Reset hours	0	0	0	0	0	0	0	0
Required hours	2209.00	2160.00	2183.00	2208.00	2209.00	2160.00	2183.00	2208.00
Indicator value	1.2%	1.0%	1.0%	1.0%	0.9%	0.8%	0.8%	0.6%

Licensee Comments: none

Safety System Unavailability, High Pressure Injection System (HPSI)



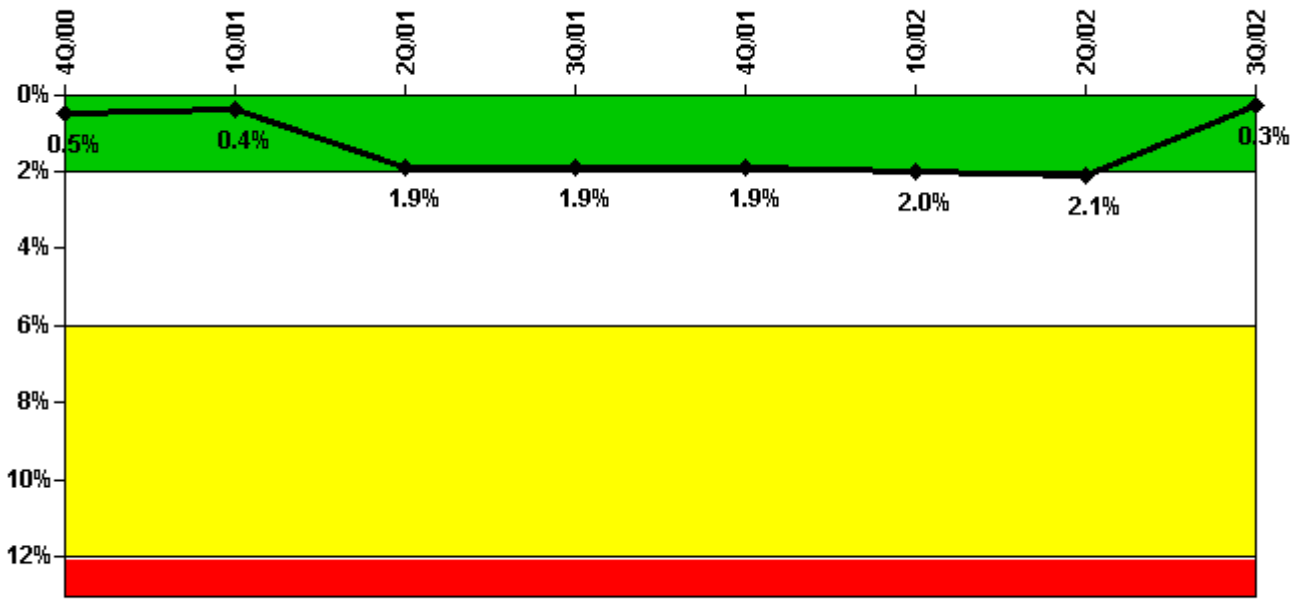
Thresholds: White > 1.5% Yellow > 5.0% Red > 10.0%

Notes

Safety System Unavailability, High Pressure Injection System (HPSI)	4Q/00	1Q/01	2Q/01	3Q/01	4Q/01	1Q/02	2Q/02	3Q/02
Train 1								
Planned unavailable hours	18.82	14.95	6.27	43.75	1.00	0.25	0	22.15
Unplanned unavailable hours	0	0	0	0	0	0	0	0
Fault exposure hours	0	0	0	0	0	0	0	0
Effective Reset hours	0	0	0	0	0	0	0	0
Required hours	2209.00	2160.00	2157.20	2208.00	2209.00	1104.00	309.80	2107.90
Train 2								
Planned unavailable hours	9.46	27.21	0.35	0.90	23.18	22.32	0	13.90
Unplanned unavailable hours	0	0	0	0	0	0	0	0
Fault exposure hours	0	0	0	0	0	0	0	0
Effective Reset hours	0	0	0	0	0	0	0	0
Required hours	2209.00	2160.00	2157.20	2208.00	2209.00	1104.00	309.80	2107.90
Indicator value	1.0%	0.9%	0.8%	0.8%	0.7%	0.6%	0.7%	0.7%

Licensee Comments: none

Safety System Unavailability, Heat Removal System (AFW)



Thresholds: White > 2.0% Yellow > 6.0% Red > 12.0%

Notes

Safety System Unavailability, Heat Removal System (AFW)	4Q/00	1Q/01	2Q/01	3Q/01	4Q/01	1Q/02	2Q/02	3Q/02
Train 1								
Planned unavailable hours	2.50	1.00	8.17	4.25	0.35	0	0	0.50
Unplanned unavailable hours	0	0	56.83	0	0	0	0	4.92
Fault exposure hours	0	81.30	1092.48	0	0	0	0	0
Effective Reset hours	0	0	0	0	0	0	0	1173.78
Required hours	2209.00	2160.00	2157.20	2208.00	2209.00	1104.00	309.80	2107.90
Train 2								
Planned unavailable hours	2.50	1.00	8.62	3.37	0.27	0	0	0
Unplanned unavailable hours	0	0	10.18	0	0	0	0	4.92
Fault exposure hours	0	0	0	0	0	0	0	0
Effective Reset hours	0	0	0	0	0	0	0	0
Required hours	2209.00	2160.00	2157.20	2208.00	2209.00	1104.00	309.80	2107.90
Train 3								
Planned unavailable hours	16.00	0	1.92	0	0	0	0	0
Unplanned unavailable hours	0	10.50	0	0	0	0	0	0
Fault exposure hours	0	0	0	0	0	0	0	0
Effective Reset hours	0	0	0	0	0	0	0	0
Required hours	2209.00	2160.00	2157.20	2208.00	2209.00	1104.00	309.80	2107.90
Indicator value	0.5%	0.4%	1.9%	1.9%	1.9%	2.0%	2.1%	0.3%

Licensee Comments:

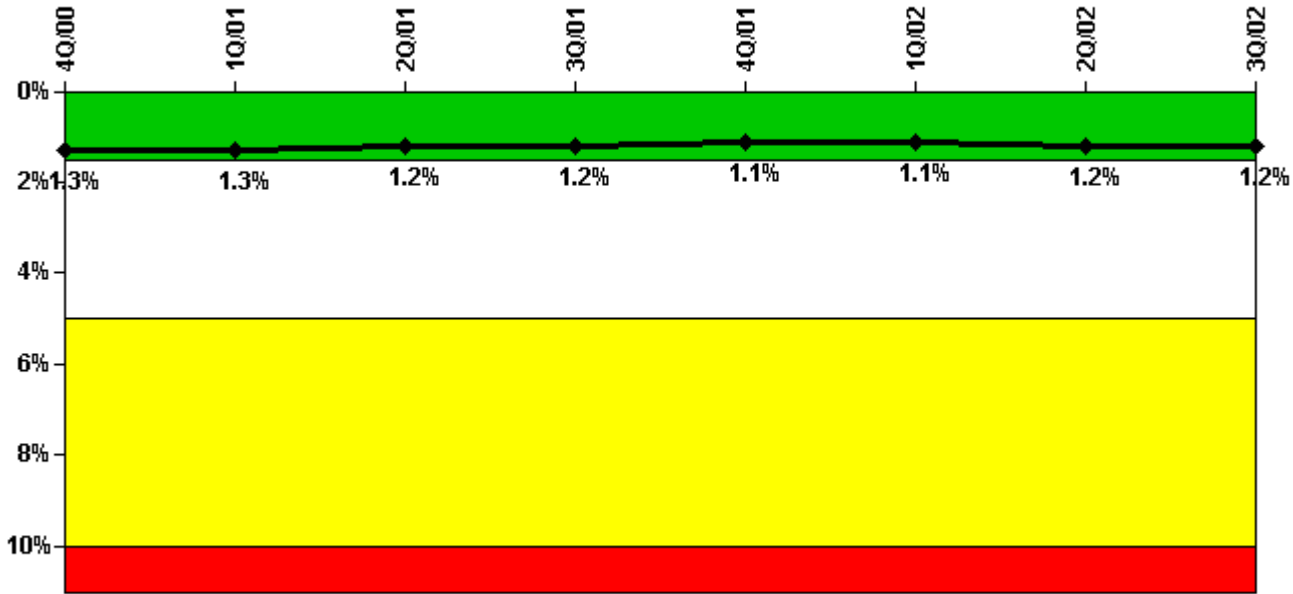
3Q/02: The fault exposure hours in Q1/2001 and Q2/2001 are reset effective Q3/2002.

Effective Reset Comments:

3Q/02: Resubmittal represents allowed resetting of fault exposure hours per FAQ 313 and NEI 99-02, Rev. 2.

3Q/02: Resubmittal represents allowed resetting of fault exposure hours per FAQ 313 and NEI 99-02, Rev. 2.

Safety System Unavailability, Residual Heat Removal System



Thresholds: White > 1.5% Yellow > 5.0% Red > 10.0%

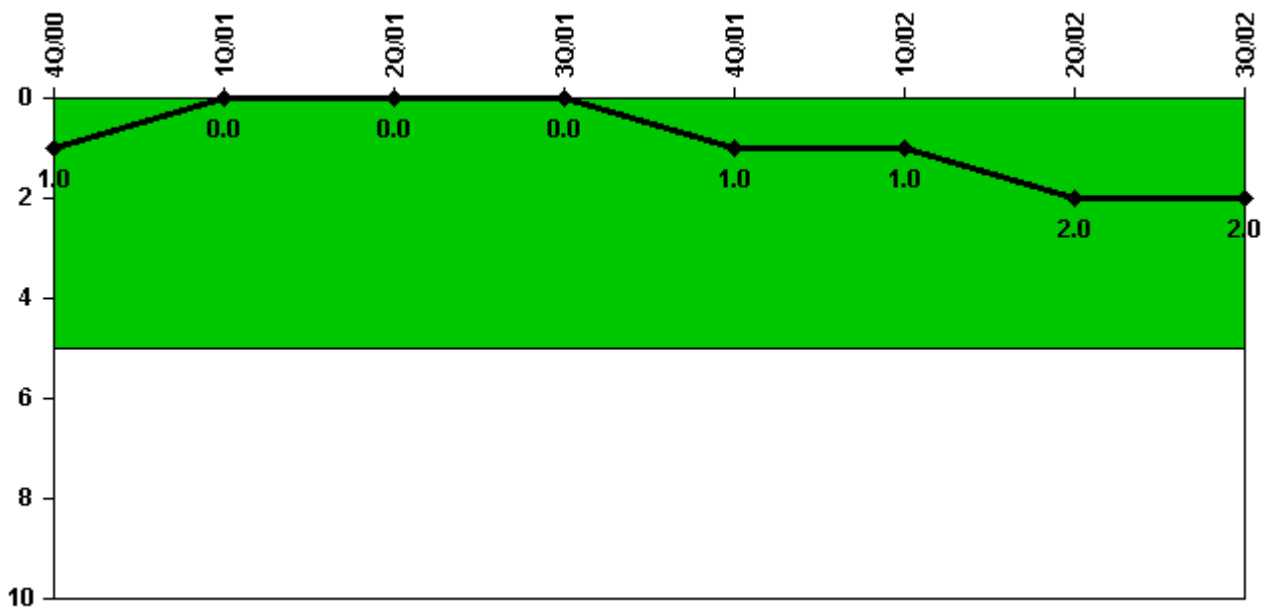
Notes

Safety System Unavailability, Residual Heat Removal System	4Q/00	1Q/01	2Q/01	3Q/01	4Q/01	1Q/02	2Q/02	3Q/02
Train 1								
Planned unavailable hours	0	0	0	0	0	0	0	0
Unplanned unavailable hours	0	0	0	0	0	0	0	0
Fault exposure hours	0	0	0	0	0	0	0	0
Effective Reset hours	0	0	0	0	0	0	0	0
Required hours	0	0	0	0	0	401.10	805.20	0
Train 2								
Planned unavailable hours	0	0	0	0	0	0	0	0
Unplanned unavailable hours	0	0	0	0	0	0	0	0
Fault exposure hours	0	0	0	0	0	0	0	0
Effective Reset hours	0	0	0	0	0	0	0	0
Required hours	0	0	0	0	0	401.10	805.20	0
Train 3								
Planned unavailable hours	23.94	27.96	13.28	21.16	14.29	1.96	0	31.38
Unplanned unavailable hours	0	0	0	2.00	2.83	0	0	0
Fault exposure hours	0	0	0	0	0	0	0	0
Effective Reset hours	0	0	0	0	0	0	0	0
Required hours	2209.00	2160.00	2183.00	2208.00	2209.00	1120.20	359.70	2208.00
Train 4								
Planned unavailable hours	23.47	31.01	1.48	5.68	22.80	24.41	0	13.37

Unplanned unavailable hours	22.90	0	0	0	0	0	0	2.68
Fault exposure hours	673.40	0	0	0	0	0	0	0
Effective Reset hours	0	0	0	0	0	0	0	0
Required hours	2209.00	2160.00	2183.00	2208.00	2209.00	1120.20	359.70	2208.00
Indicator value	1.3%	1.3%	1.2%	1.2%	1.1%	1.1%	1.2%	1.2%

Licensee Comments: none

Safety System Functional Failures (PWR)



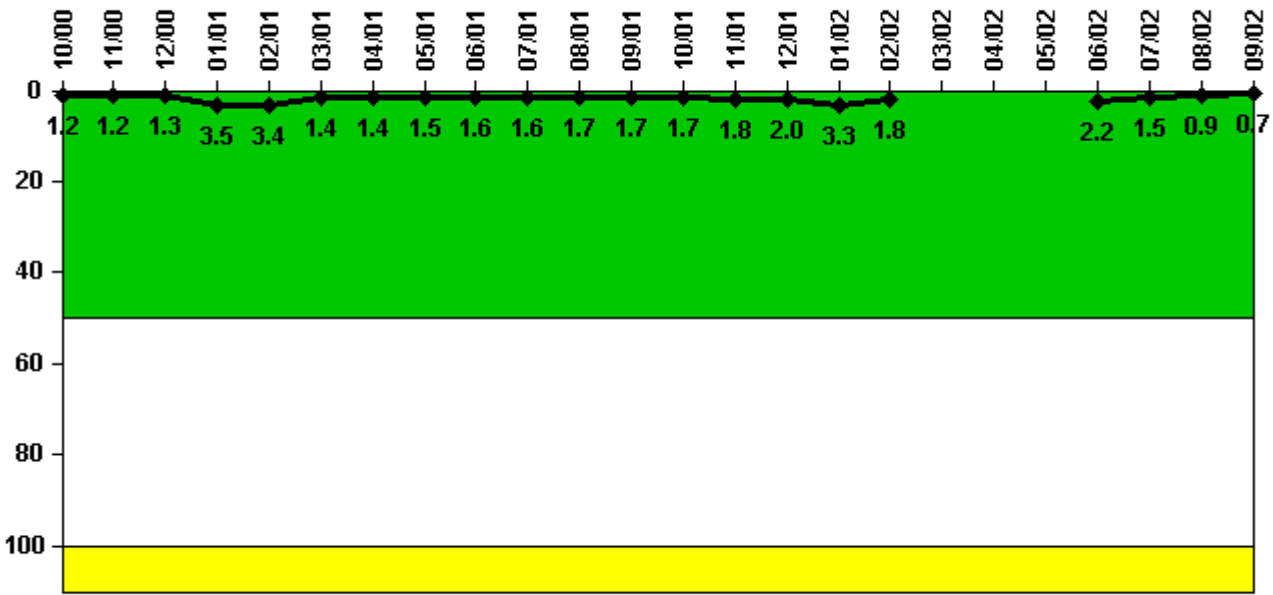
Thresholds: White > 5.0

Notes

Safety System Functional Failures (PWR)	4Q/00	1Q/01	2Q/01	3Q/01	4Q/01	1Q/02	2Q/02	3Q/02
Safety System Functional Failures	0	0	0	0	1	0	1	0
Indicator value	1	0	0	0	1	1	2	2

Licensee Comments: none

Reactor Coolant System Activity



Thresholds: White > 50.0 Yellow > 100.0

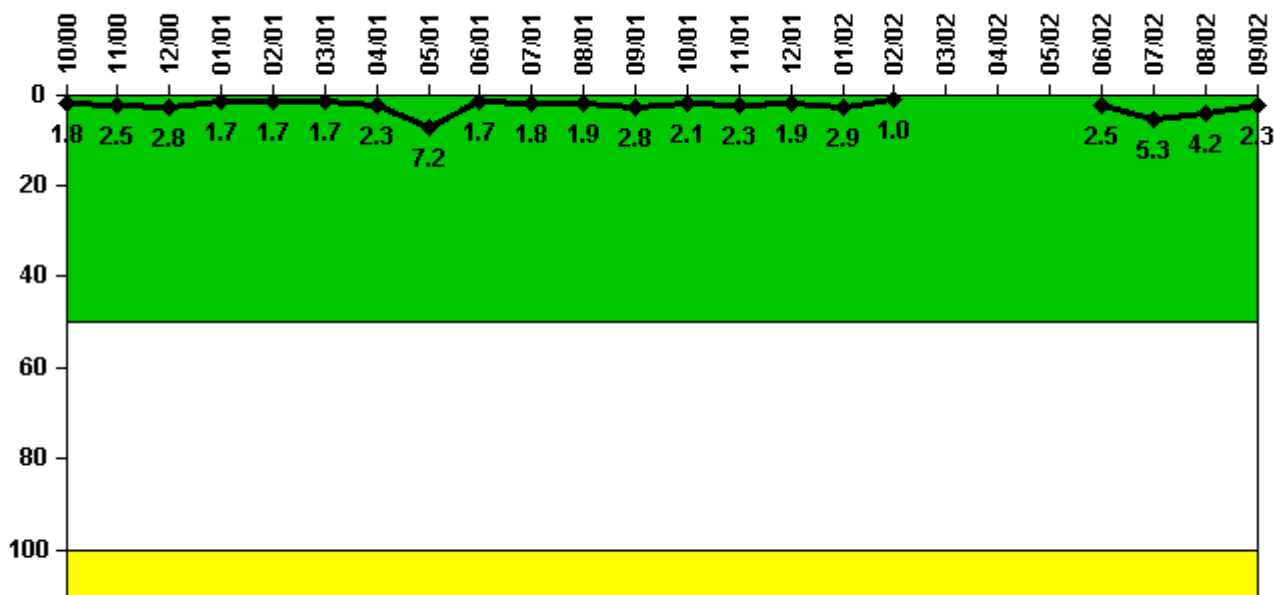
Notes

Reactor Coolant System Activity	10/00	11/00	12/00	1/01	2/01	3/01	4/01	5/01	6/01	7/01	8/01	9/01
Maximum activity	0.012200	0.011900	0.012600	0.035400	0.033600	0.014400	0.014400	0.015200	0.016100	0.016400	0.016700	0.016900
Technical specification limit	1.0	1.0	1.0	1.0	1.0	1.0	1.0	1.0	1.0	1.0	1.0	1.0
Indicator value	1.2	1.2	1.3	3.5	3.4	1.4	1.4	1.5	1.6	1.6	1.7	1.7

Reactor Coolant System Activity	10/01	11/01	12/01	1/02	2/02	3/02	4/02	5/02	6/02	7/02	8/02	9/02
Maximum activity	0.017200	0.018100	0.020200	0.033200	0.018200	N/A	N/A	N/A	0.021800	0.015000	0.009490	0.007400
Technical specification limit	1.0	1.0	1.0	1.0	1.0	N/A	N/A	N/A	1.0	1.0	1.0	1.0
Indicator value	1.7	1.8	2.0	3.3	1.8	N/A	N/A	N/A	2.2	1.5	0.9	0.7

Licensee Comments: none

Reactor Coolant System Leakage



Thresholds: White > 50.0 Yellow > 100.0

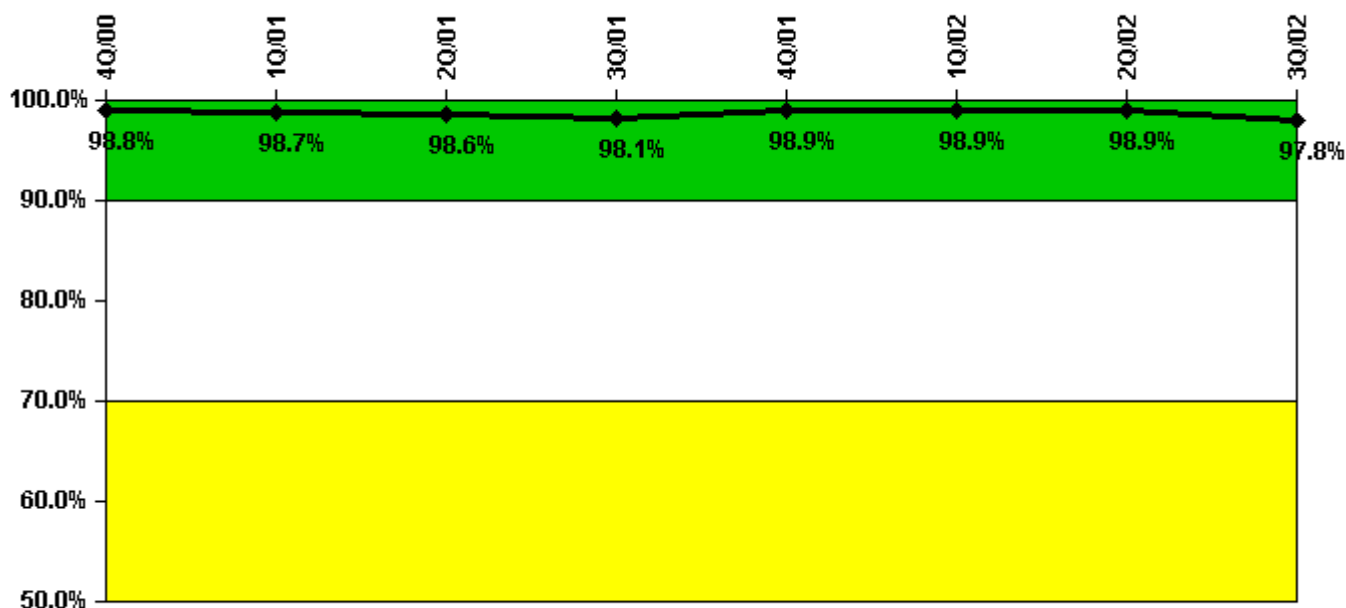
Notes

Reactor Coolant System Leakage	10/00	11/00	12/00	1/01	2/01	3/01	4/01	5/01	6/01	7/01	8/01	9/01
Maximum leakage	0.176	0.251	0.277	0.170	0.165	0.170	0.230	0.720	0.170	0.180	0.185	0.281
Technical specification limit	10.0	10.0	10.0	10.0	10.0	10.0	10.0	10.0	10.0	10.0	10.0	10.0
Indicator value	1.8	2.5	2.8	1.7	1.7	1.7	2.3	7.2	1.7	1.8	1.9	2.8

Reactor Coolant System Leakage	10/01	11/01	12/01	1/02	2/02	3/02	4/02	5/02	6/02	7/02	8/02	9/02
Maximum leakage	0.210	0.230	0.190	0.286	0.103	N/A	N/A	N/A	0.250	0.525	0.417	0.234
Technical specification limit	10.0	10.0	10.0	10.0	10.0	N/A	N/A	N/A	10.0	10.0	10.0	10.0
Indicator value	2.1	2.3	1.9	2.9	1.0	N/A	N/A	N/A	2.5	5.3	4.2	2.3

Licensee Comments: none

Drill/Exercise Performance



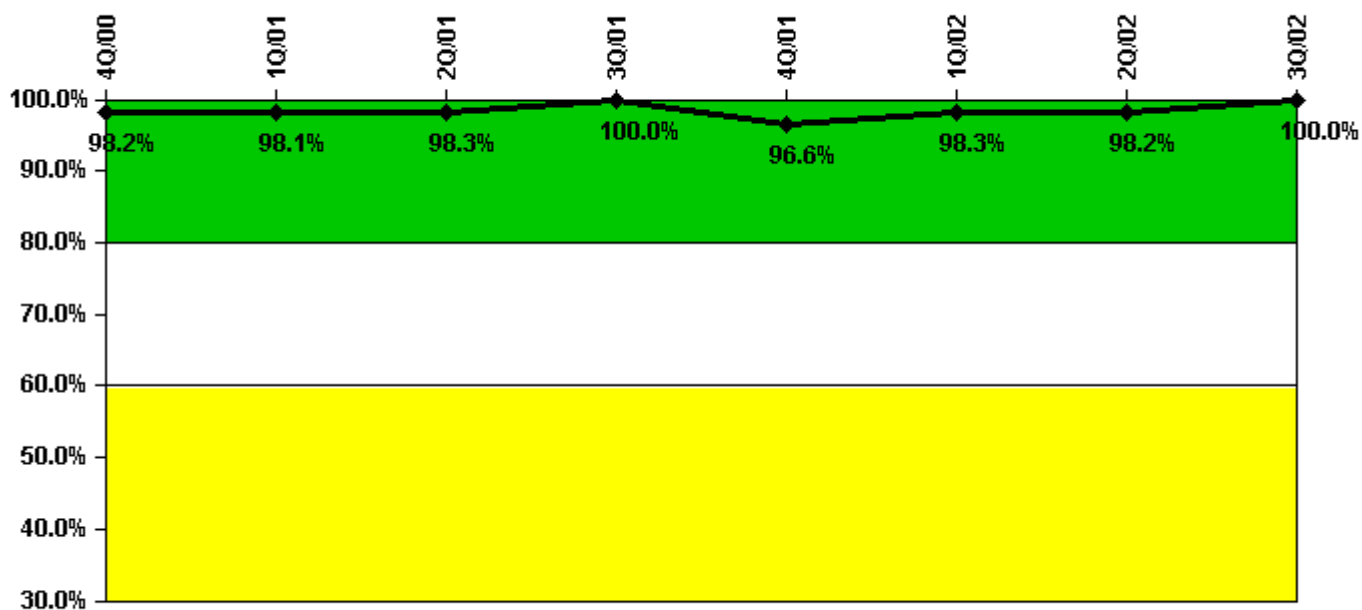
Thresholds: White < 90.0% Yellow < 70.0%

Notes

Drill/Exercise Performance	4Q/00	1Q/01	2Q/01	3Q/01	4Q/01	1Q/02	2Q/02	3Q/02
Successful opportunities	33.0	11.0	22.0	27.0	25.0	14.0	8.0	34.0
Total opportunities	33.0	11.0	22.0	28.0	25.0	14.0	8.0	37.0
Indicator value	98.8%	98.7%	98.6%	98.1%	98.9%	98.9%	98.9%	97.8%

Licensee Comments: none

ERO Drill Participation



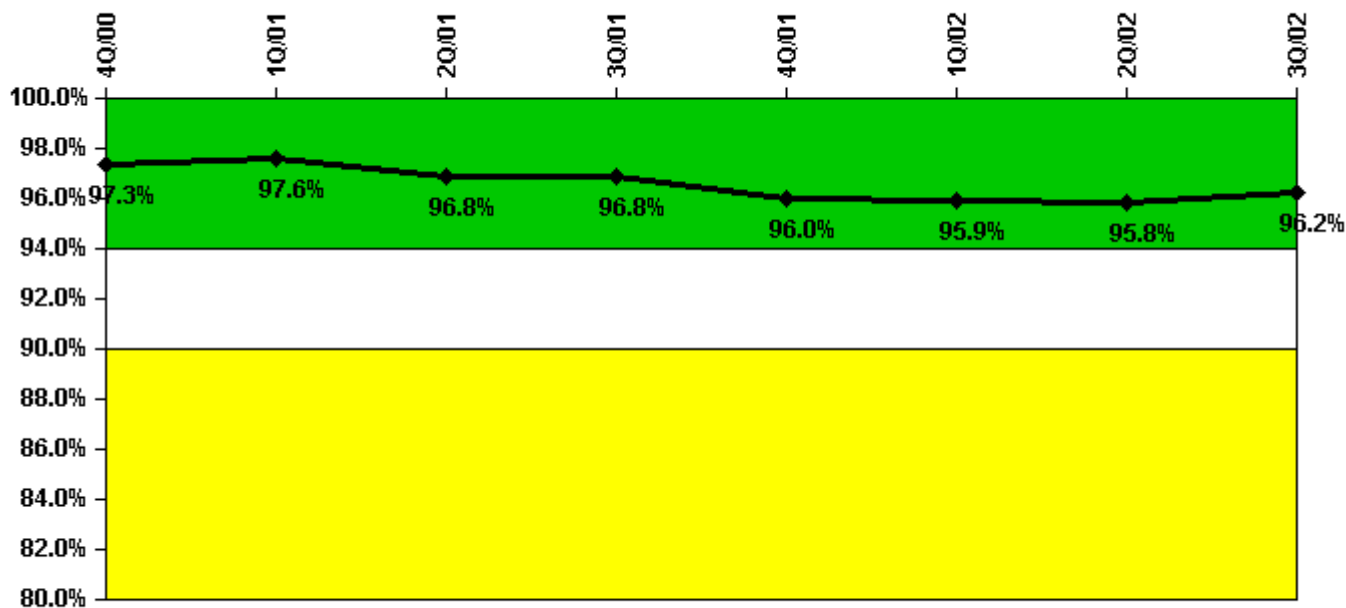
Thresholds: White < 80.0% Yellow < 60.0%

Notes

ERO Drill Participation	4Q/00	1Q/01	2Q/01	3Q/01	4Q/01	1Q/02	2Q/02	3Q/02
Participating Key personnel	54.0	53.0	59.0	57.0	57.0	58.0	54.0	58.0
Total Key personnel	55.0	54.0	60.0	57.0	59.0	59.0	55.0	58.0
Indicator value	98.2%	98.1%	98.3%	100.0%	96.6%	98.3%	98.2%	100.0%

Licensee Comments: none

Alert & Notification System



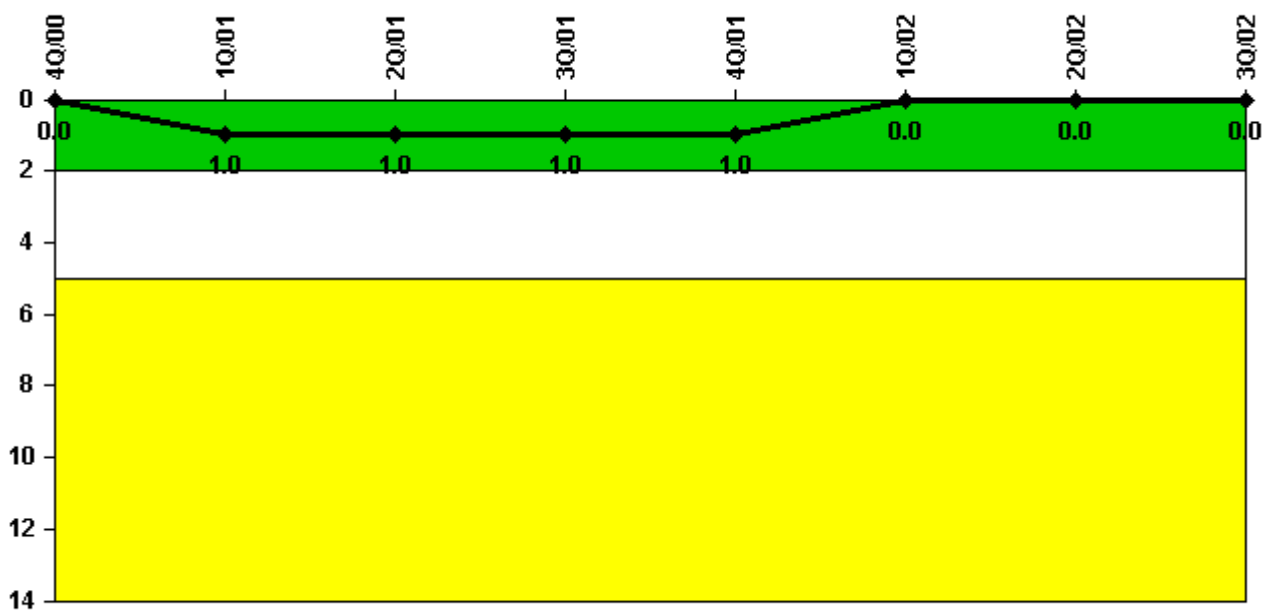
Thresholds: White < 94.0% Yellow < 90.0%

Notes

Alert & Notification System	4Q/00	1Q/01	2Q/01	3Q/01	4Q/01	1Q/02	2Q/02	3Q/02
Successful siren-tests	1039	990	944	969	1078	918	956	1035
Total sirens-tests	1068	1002	1002	1002	1140	930	1019	1057
Indicator value	97.3%	97.6%	96.8%	96.8%	96.0%	95.9%	95.8%	96.2%

Licensee Comments: none

Occupational Exposure Control Effectiveness



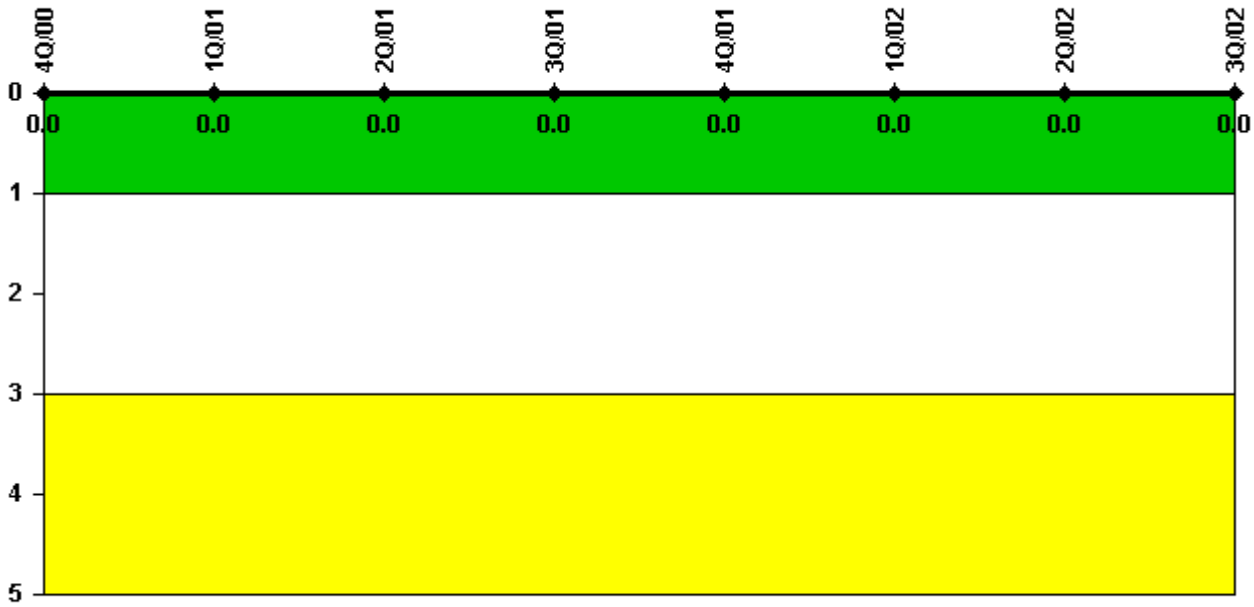
Thresholds: White > 2.0 Yellow > 5.0

Notes

Occupational Exposure Control Effectiveness	4Q/00	1Q/01	2Q/01	3Q/01	4Q/01	1Q/02	2Q/02	3Q/02
High radiation area occurrences	0	1	0	0	0	0	0	0
Very high radiation area occurrences	0	0	0	0	0	0	0	0
Unintended exposure occurrences	0	0	0	0	0	0	0	0
Indicator value	0	1	1	1	1	0	0	0

Licensee Comments: none

RETS/ODCM Radiological Effluent



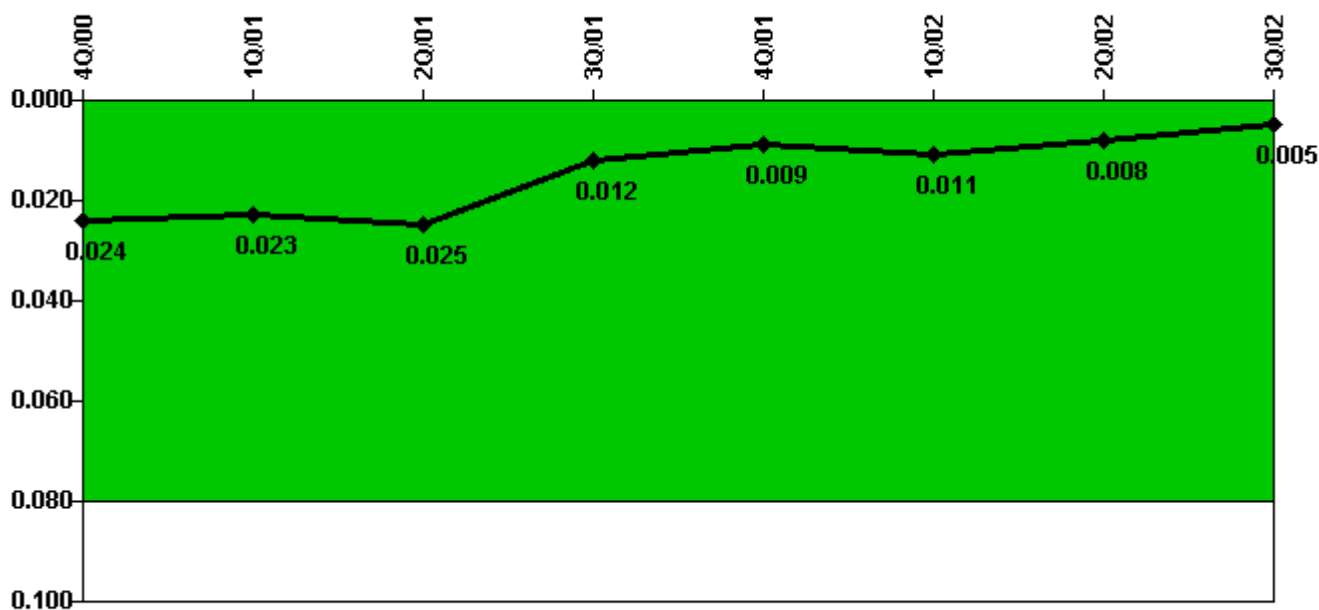
Thresholds: White > 1.0 Yellow > 3.0

Notes

RETS/ODCM Radiological Effluent	4Q/00	1Q/01	2Q/01	3Q/01	4Q/01	1Q/02	2Q/02	3Q/02
RETS/ODCM occurrences	0	0	0	0	0	0	0	0
Indicator value	0	0	0	0	0	0	0	0

Licensee Comments: none

Protected Area Security Performance Index



Thresholds: White > 0.080

Notes

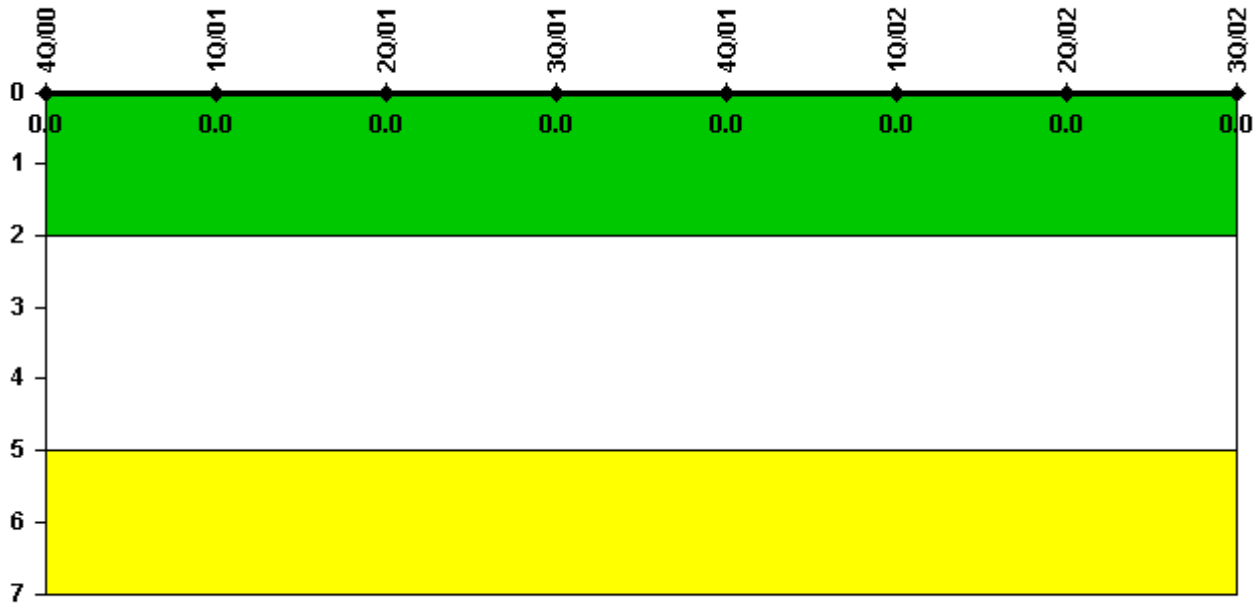
Protected Area Security Performance Index	4Q/00	1Q/01	2Q/01	3Q/01	4Q/01	1Q/02	2Q/02	3Q/02
IDS compensatory hours	116.70	14.80	85.60	69.60	39.90	51.10	1.80	7.80
CCTV compensatory hours	0	0	0	0	0	19.5	0	0
IDS normalization factor	1.40	1.40	1.40	1.40	1.40	1.40	1.40	1.40
CCTV normalization factor	1.2	1.2	1.2	1.2	1.2	1.2	1.2	1.2
Index Value	0.024	0.023	0.025	0.012	0.009	0.011	0.008	0.005

Licensee Comments:

3Q/02: The indicator value for Q2/2002 is different than previously reported as a result of a change report submitted to correct Q2/2002 data for CCTV and IDS compensatory hours.

2Q/02: The number of IDS Compensatory Hours during the last 4 quarters and CCTV Compensatory Hours during the last 4 quarters were inadvertently reported for the number of IDS Compensatory Hours during the quarter and CCTV Compensatory Hours during the quarter, respectively. This change affects the Q2/2002 report only and does not affect the color of the indicator.

Personnel Screening Program



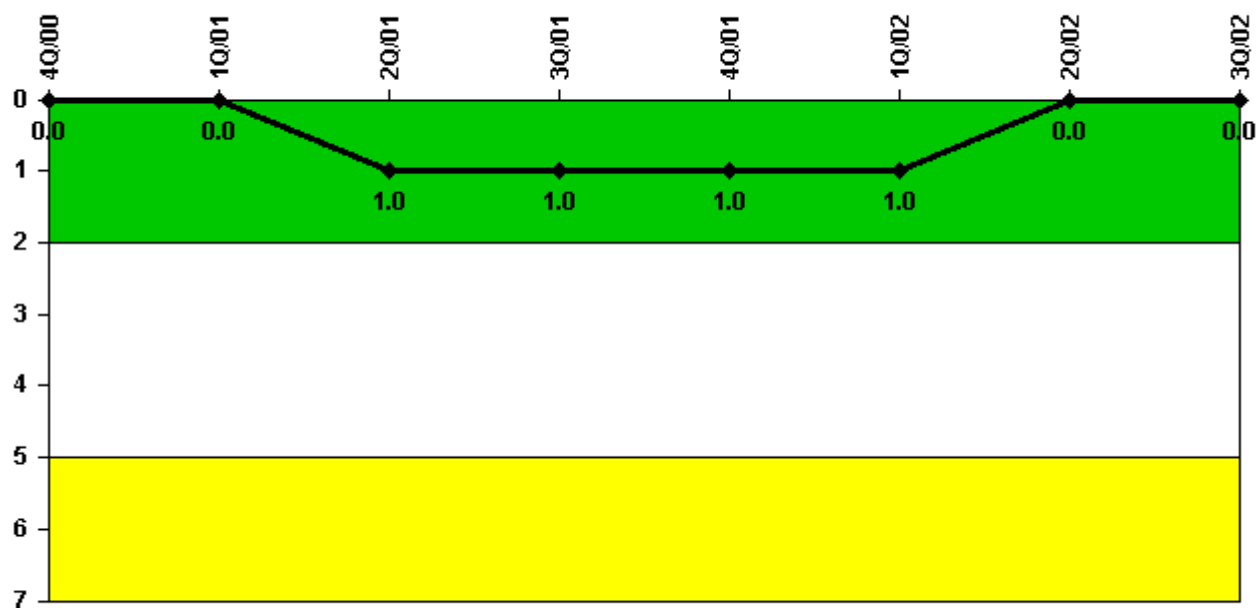
Thresholds: White > 2.0 Yellow > 5.0

Notes

Personnel Screening Program	4Q/00	1Q/01	2Q/01	3Q/01	4Q/01	1Q/02	2Q/02	3Q/02
Program failures	0	0	0	0	0	0	0	0
Indicator value	0	0	0	0	0	0	0	0

Licensee Comments: none

FFD/Personnel Reliability



Thresholds: White > 2.0 Yellow > 5.0

Notes

FFD/Personnel Reliability	4Q/00	1Q/01	2Q/01	3Q/01	4Q/01	1Q/02	2Q/02	3Q/02
Program Failures	0	0	1	0	0	0	0	0
Indicator value	0	0	1	1	1	1	0	0

Licensee Comments: none

▲ [PI Summary](#) | [Inspection Findings Summary](#) | [Reactor Oversight Process](#)

Last Modified: October 22, 2002